

# Rising GOLD DEVELOPER in the Asia-Pacific

Misima Gold Project November 2020 Pre-Feasibility Study,  
Maiden Ore Reserve and Resource upgrade

24 November, 2020

Andrew Corbett, Managing Director

130,000ozpa, A\$1,159/oz AISC

17-year mine life

Strong financial returns

**KSN**

**KINGSTON**  
RESOURCES  
LIMITED



ASX: KSN



# Disclaimer

## Forward Looking Statements

Certain statements contained in this presentation, including information as to the future financial or operating performance of Kingston Resources Limited ("KSN") and its projects, are forward looking statements. Such forward looking statements:

- include, among other things, statements regarding incomplete and uncertain proposals or targets, production and prices, operating costs and results, capital expenditures, and are or may be based on assumptions and estimates related to future technical, economic, market, political, social and other conditions;
- are necessarily based upon a number of estimates and assumptions that, while considered reasonable by KSN, are inherently subject to significant technical, business, economic, competitive, political and social uncertainties and contingencies; and
- involve known and unknown risks and uncertainties that could cause actual events or results to differ materially from estimated or anticipated events or results reflected in such forward looking statements.

KSN disclaims any intent or obligation to update publicly any forward looking statements, whether as a result of new information, future events or results or otherwise. The words "believe", "expect", "anticipate", "indicate", "contemplate", "target", "scope", "plan", "intends", "continue", "budget", "estimate", "may", "will", "schedule" and similar expressions identify forward looking statements. All forward looking statements made in this presentation are qualified by the foregoing cautionary statements. Recipients are cautioned that forward looking statements are not guarantees of future performance and accordingly investors are cautioned not to put undue reliance on forward looking statements due to the inherent uncertainty therein.

## Disclaimer

No representation or warranty, express or implied, is made as to the fairness, accuracy, completeness or correctness of the information, opinions and conclusions contained in this presentation. To the maximum extent permitted by law, none of KSN, its directors, employees or agents, nor any other person accepts any liability, including, without limitation, any liability arising out of fault of negligence, for any loss arising from the use of the information contained in this presentation. In particular, no representation or warranty, express or implied is given as to the accuracy, completeness or correctness, likelihood of achievement or reasonableness or any forecasts, prospects or returns contained in this presentation nor is any obligation assumed to update such information. Such forecasts, prospects or returns are by their nature subject to significant uncertainties and contingencies.

The information contained in this presentation is for informational purposes only and does not constitute an offer to issue, or arrange to issue, securities or other financial products. The information contained in this presentation is not investment or financial product advice and is not intended to be used as the basis for making an investment decision. The presentation has been prepared without taking into account the investment objectives, financial situation or particular needs of any particular person. Before making an investment decision, you should consider, with or without the assistance of a financial adviser, whether an investment is appropriate in light of your particular investment needs, objectives and financial circumstances. Past performance is no guarantee of future performance.

## Competent Persons Statement

The information in this report that relates to Exploration Results and Mineral Resources is based on information compiled by Mr Stuart Hayward (BAppSc (Geology)) MAIG, a Competent Person who is a member of the Australian Institute of Geoscientists. Mr Hayward is an employee of the Company and has sufficient experience that is relevant to the style of mineralisation and type of deposit under consideration and to the activity being undertaken to qualify as a Competent Person as defined in the 2012 Edition of the "Australasian Code for Reporting of Exploration Results, Mineral Resources and Ore Reserves". Mr Hayward consents to the inclusion in this report of the matters based upon the information in the form and context in which it appears.

The Competent Person signing off on the overall Ore Reserves Estimate is Mr John Wyche (BE (Min Hon)), of Australian Mine Design and Development Pty Ltd, who is a Fellow of the Australasian Institute of Mining and Metallurgy and who has sufficient relevant experience in operations and consulting for open pit metalliferous mines. Mr Wyche consents to the inclusion in this report of the matters based upon the information in the form and context in which it appears.

Kingston confirms that it is not aware of any new information or data that materially affects the information included in all ASX announcements referenced in this release, including references to the Pre-Feasibility Study, Resource and Reserve announcements, and that all material assumptions and technical parameters underpinning the estimates in these announcements continue to apply and have not materially changed.

## Exploration by Other Explorers

This presentation contains information sourced from the reports of Other Explorers. References to the original reports are provided as footnotes where the information is cited in this presentation. KSN does not vouch for the accuracy of these reports. KSN has taken the decision to include this information as it is in the public domain and as we assess it to be of relevance to shareholders and investors.

# Gold Explorer & Developer – ASX Listed: KSN

## MISIMA GOLD PROJECT (KSN: 100%<sup>1</sup>) PNG

- **Resource:** 3.6Moz Au & 24.2Moz Ag<sup>2</sup>
- **Reserve:** 1.35Moz Au & 6.5Moz Ag<sup>2</sup>
- **Pre-Feasibility Study complete:**
  - **Large scale:** 130,000oz pa
  - **Low cost:** AISC \$1,159/oz
  - **Long life:** 17-year mine life
  - **Strong financials:** \$822m pre-tax NPV, 33% IRR, 4.7-year payback<sup>3</sup>
- **Extensive mining history** significantly de-risks development pathway
- **Currently drilling** focused on Resource infill and extension drilling

## LIVINGSTONE GOLD PROJECT (KSN: 75%) Western Australia

- **High-grade gold** discovery in WA's Bryah Basin
- **Multiple exploration targets** still to be tested



Aiming to be the **next low-cost, large-scale gold producer** in the Asia-Pacific

# Capital Structure, Board & Management

## Share Price

A\$0.25

## Issued Shares

231M

## Market Cap

\$58M

## Enterprise Value

\$51M

## Cash

(30 Sept 2020)

\$6.8M

## Board & Management

Mick Wilkes	Chairman (1 Dec 2020)
Tony Wehby	Non-Executive Director
Stuart Rechner	Non-Executive Director
Andrew Corbett	Managing Director
Chris Drew	Chief Financial Officer
Stuart Hayward	Chief Geologist

## Major Shareholders

Winchester Investments	14.8 %
Delphi	8.5 %
Farjoy	6.6 %
JP Morgan Nominees	6.2 %
Top 20 shareholders	61.0 %

## Share Price – 12-month Performance



# Misima Gold Project: Overview and Key Statistics

## Misima Island

- Over 130 years of gold production
- Over 7Moz of endowment to date
- 600km east of Port Moresby, Milne Bay Province

## Misima Resource & Reserve released 24 Nov 2020

- **Resource:** 144Mt @ 0.78g/t Au for 3.6Moz<sup>1</sup>
- **Reserve:** 48Mt @ 0.87g/t Au for 1.35Moz<sup>1</sup>

## Misima production advantage

- Brownfields site with infrastructure
- Highly skilled and supportive local community
- Excellent access with commercial flights and sea freight

## Misima – aiming to repeat the past

- Placer operated a large-scale, long life open pit mine
- Placer ran a successful 5.5Mtpa standard CIL plant

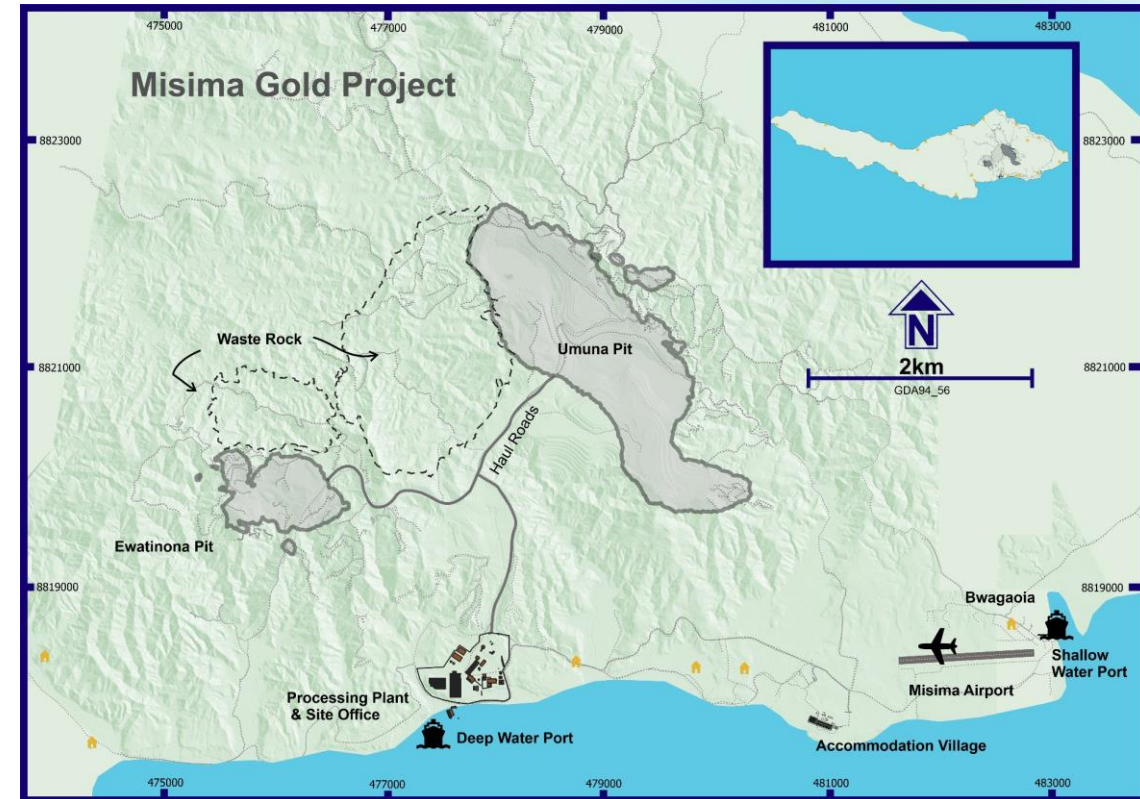


1. See KSN ASX announcement on 24 Nov 2020 for further detail  
[www.kingstonresources.com.au](http://www.kingstonresources.com.au)



# Misima Pre-Feasibility Study

- PFS completed November 2020
- Development underpinned by **3.6Moz Resource<sup>1</sup>** and **1.35Moz Reserve<sup>1</sup>**
- Leveraging off 15 years of previous production history:
  - New plant largely replicates successful Placer design
  - Haul roads, port, airstrip in place
  - Pit, plant, camp, haul road, port locations all unchanged
  - Geotechnical and metallurgical information well understood
- **Brownfields development** site delivers capital cost advantages
- Low cost operation driven by geology and scale
- **Strong community support** for advancing the project



Historical photograph of Misima mill



1. See KSN ASX announcement on 24 Nov 2020 for further detail

# Misima Pre-Feasibility Study

- Misima Gold Project PFS delivers **exceptional economics**<sup>1,2</sup>:
  - 17-year mine life at 130,000oz per annum annual average gold production, 5.5Mtpa mining and processing
  - LOM average AISC A\$1,159/oz
  - LOM Revenue A\$4.9 billion
  - LOM Free Cash Flow A\$1.5 billion
- Pre-tax NPV of A\$822m, (8% disc. rate, US\$1600/oz Au)
  - Pre-tax IRR 33%
  - Payback period 4.7 years
  - Post-tax NPV A\$535m, IRR 26%
- Spot gold price economics (US\$1900/oz)
  - Pre-tax NPV of A\$1.28 billion
  - Pre-tax IRR 48%
  - Payback period 2.75 years
- Capital expenditure A\$283m, including A\$37m contingency

## PFS – Production Target Summary & Economics

LOM	Years	17	
LOM Gold production	oz	2,133,157	
LOM Avg annual gold production	oz	129,282	
Annual mill throughput	Mt	5.5	
Capital Expenditure	A\$m	283	
LOM AISC	A\$/oz	1,159	
LOM avg recovery	%	89.4%	
LOM strip ratio	waste:ore	5.1	
LOM strip ratio (excluding backfill)	waste:ore	3.7	
Gold Price		US\$1600/oz	Spot (US\$1900)
Exchange Rate	AUD	A\$0.70	A\$0.70
LOM Revenue	A\$m	5,081	5,996
LOM Free Cash Flow	A\$m	1,466	2,094
NPV (8%) pre tax	A\$m	822	1,279
NPV (8%) post tax	A\$m	535	857
IRR pre-tax	%	33%	48%
IRR post-tax	%	26%	37%
Payback	years	4.67	2.75

1. See KSN ASX announcement on 24 November 2020 for further detail

2. The PFS referred to in this announcement is based upon a Production Target derived from the JORC Code 2012 Compliant Mineral Resource Estimate inclusive of the Probable Ore Reserve referred to in this announcement. The Company advises that the Probable Ore Reserve provides 54% of the total milled tonnage and 57% of the total contained gold metal, the Indicated Resource outside the Ore Reserve provides a further 7% of the total milled tonnage and 7% of the total contained gold metal. The remaining tonnage (39%) and contained ounces (36%) is comprised of Inferred Resources

# Misima Pre-Feasibility Study

- Low-cost mining and processing are key advantages at Misima
- Key drivers of the forecast low operating costs:
  - Coarse grind: P80 passing at 250 micron
  - Low bond work index: BWi of 7 in oxide ore, 11 in fresh ore
  - Low power consumption processing: 16MW total generation capacity for 5.5Mtpa plant
  - Low powder factor: 0.11 – 0.15kg/t
  - Low deleterious elements
  - Long and well understood history of successful mining and processing
  - Low-cost operating environment in PNG
- Under Placer, Misima delivered LOM cash costs of US\$218/oz over 15 years<sup>1</sup> – Kingston to mine and process the same orebody

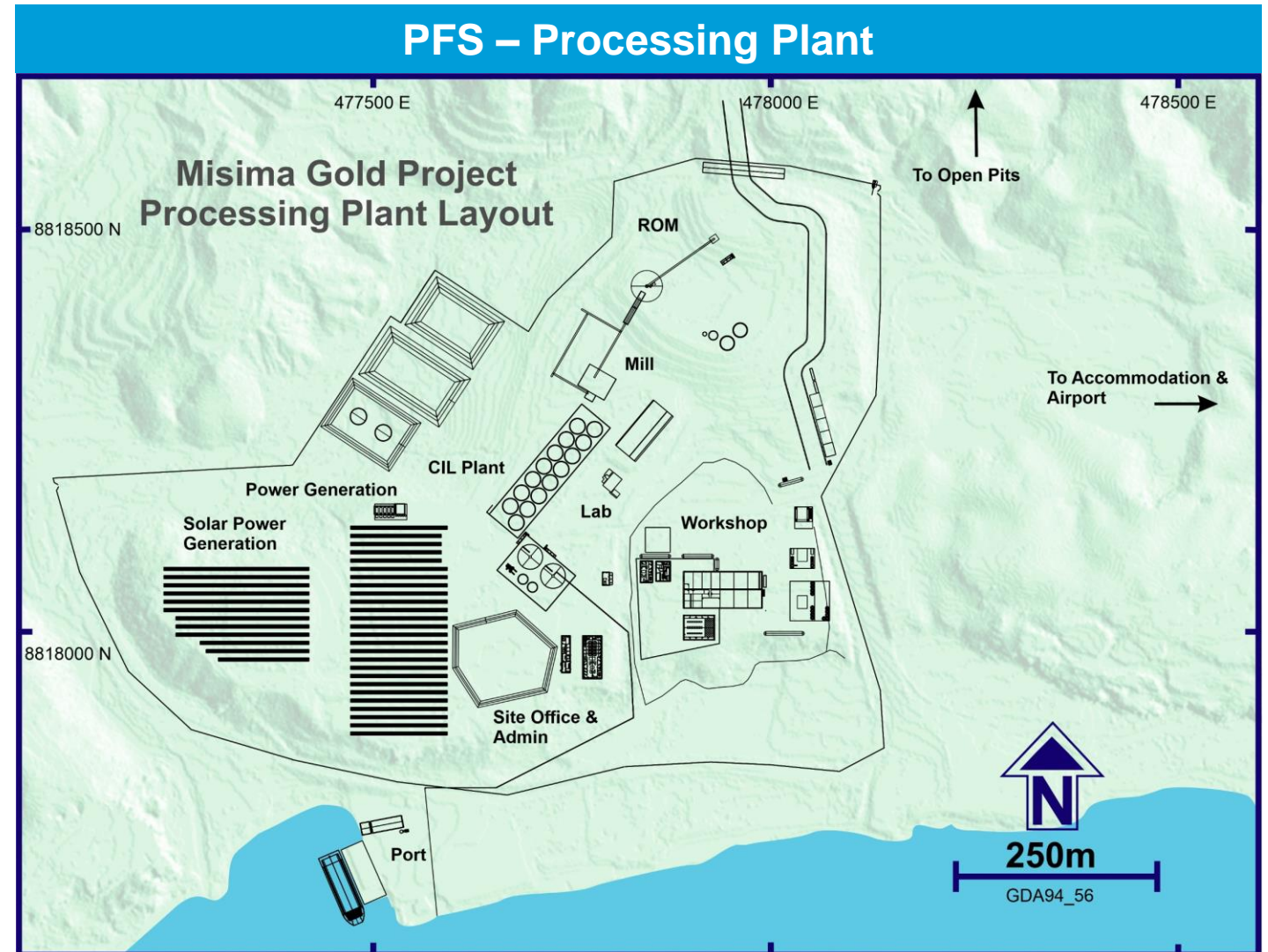
PFS Production Target – Capital & Operating Costs		
Capital Costs		
5.5Mtpa Processing Plant	A\$m	99.0
Other infrastructure	A\$m	61.5
Mine development	A\$m	17.2
Capitalised pre-strip	A\$m	32.5
Owners costs	A\$m	35.7
Contingency	A\$m	37.2
Total Pre-Production Capital Expenditure	<b>A\$m</b>	<b>283.1</b>
LOM Sustaining Capital Expenditure	A\$m	135.1
LOM Operating cost summary		
	<b>A\$/tonne</b>	<b>A\$/oz</b>
Mining	10.42	440
Processing	13.23	558
SG&A	3.20	135
Royalties	1.40	59
Sustaining Capex	1.50	63
Silver by-product credit	(2.28)	(96)
<b>AISC</b>	<b>27.47</b>	<b>1,159</b>

1. Kennedy, 1994, AUSIMM, "Misima Mines milling operation: one of the World's lowest cost conventional gold extraction plants"  
[www.kingstonresources.com.au](http://www.kingstonresources.com.au)



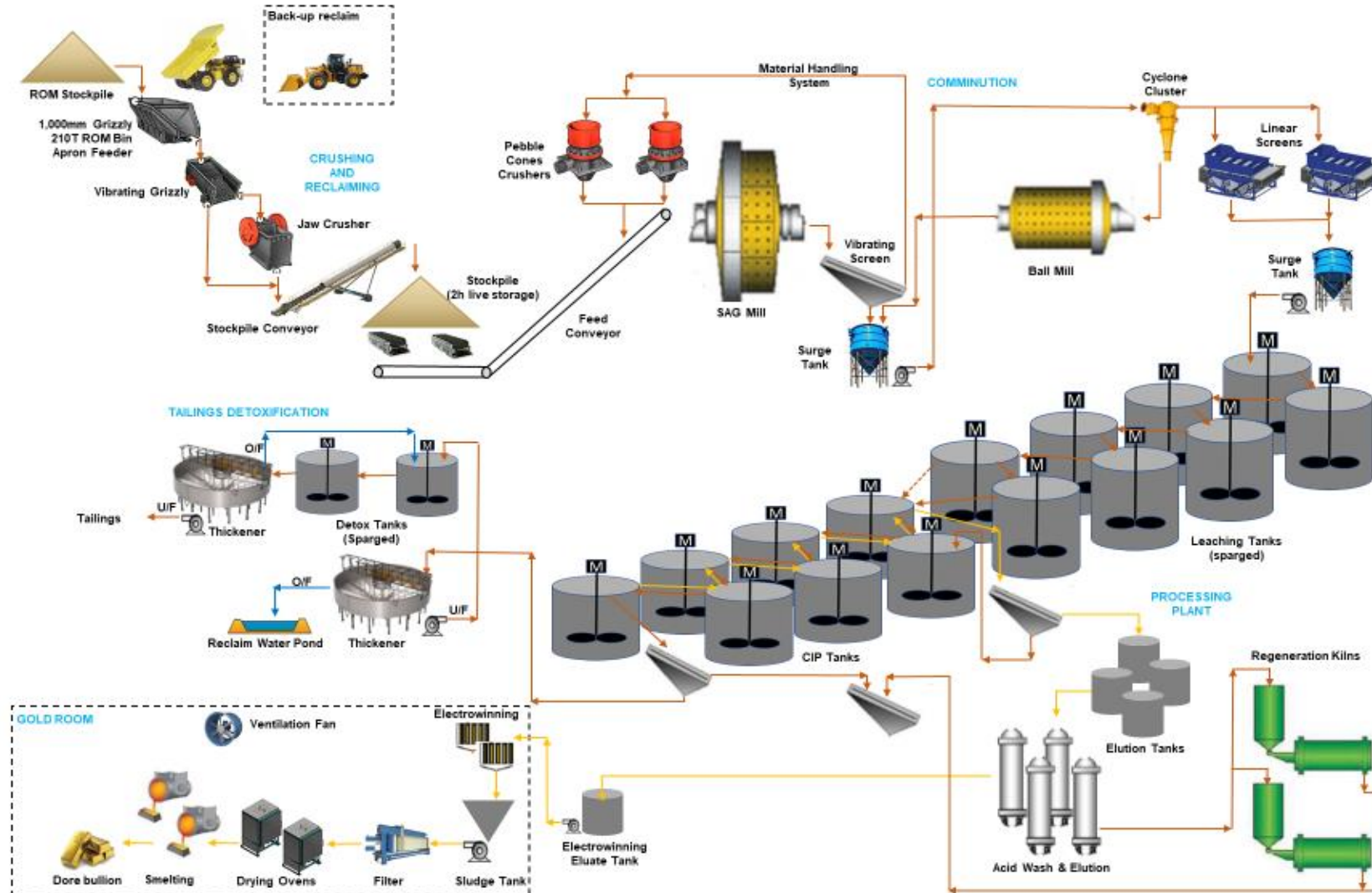
# Misima Pre-Feasibility Site Layout

- Utilising previous process plant location
- Leveraging existing land topography and previous footprint
- Excellent access to current Misima Island facilities such as roads, airport, and ports
- Simple layout utilising historical footprint
- Access existing haul road
- Access existing port location



# Misima – Proven and Simple Process Flowsheet

## Misima PFS – Processing Plant

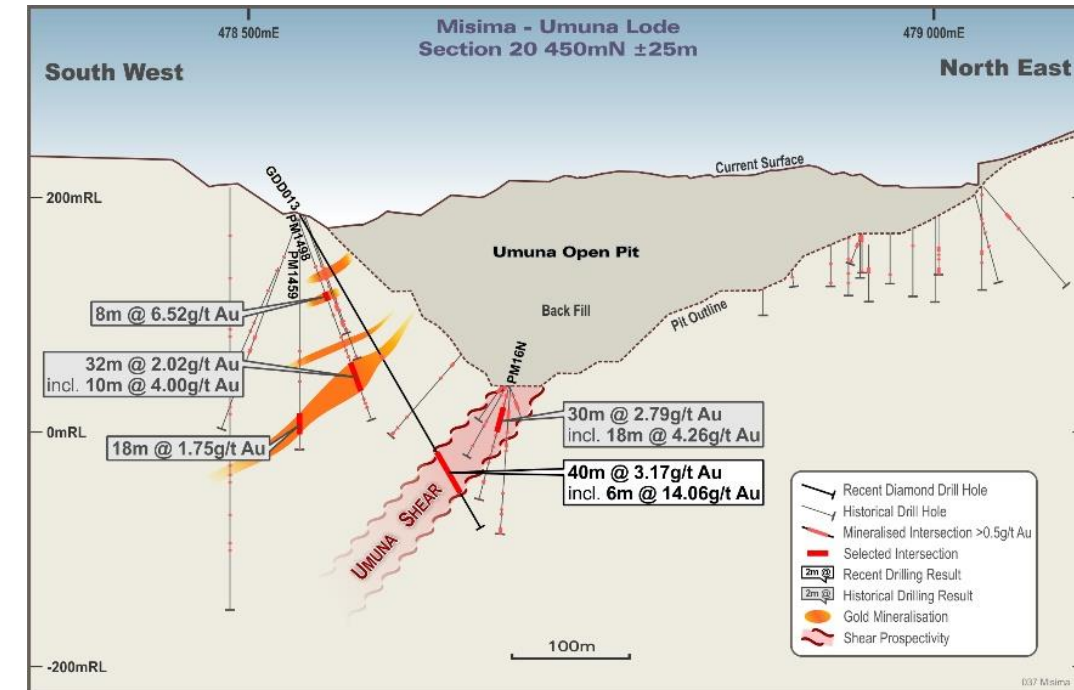
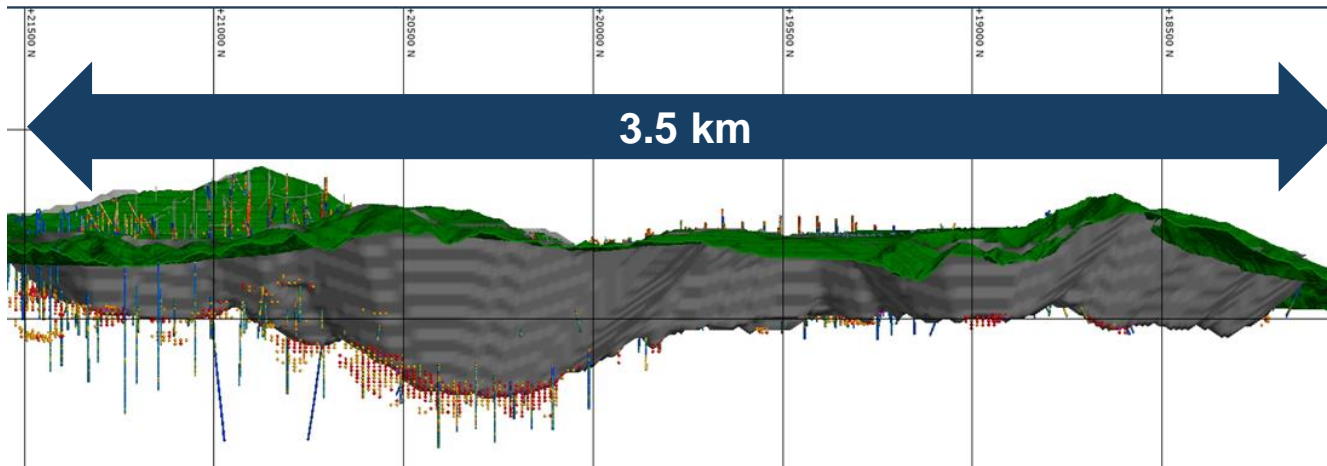


# Umuna Deposit: 3.3Moz Resource

**Umuna Resource: 133Mt @ 0.78g/t Au, 5.3g/t Ag**

Exceptional upside potential:

- Umuna open pit previously produced over 3.5Moz Au
- Resource is drill constrained with outstanding potential to increase ounces at depth and to the north
- Shallow drilling with average hole depth **~119m** and only **9% of holes exceeding 200m**



## Drilling highlights<sup>1</sup>:

**40m @ 3.17g/t Au and 10.88g/t Ag** from 234m,  
incl. **6m @ 14.06g/t Au** and **13.33g/t Ag** from 268m

**27m @ 1.08g/t Au and 4.09g/t Ag** from 129m

**56m @ 1.01g/t Au and 7.10g/t Ag** from 110m

**10m @ 1.25g/t Au and 1.40g/t Ag** from 92m

**10m @ 1.76g/t Au and 1.50g/t Ag** from 151m

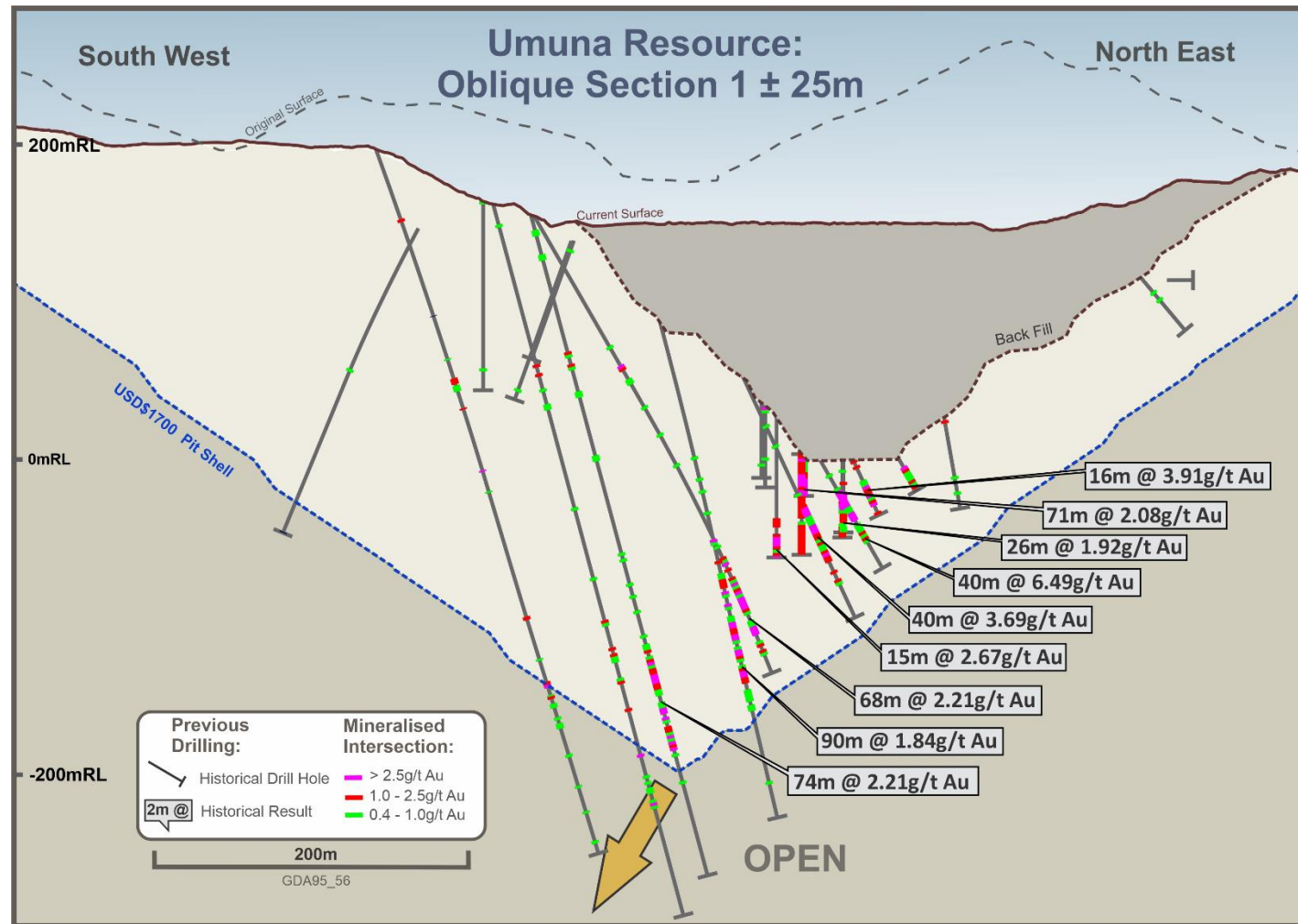


# Umuna Deposit: High-Grade Structures

Umuna hosts a number of high grade structures inside a broader mineralised corridor.

Intersections include<sup>1</sup>:

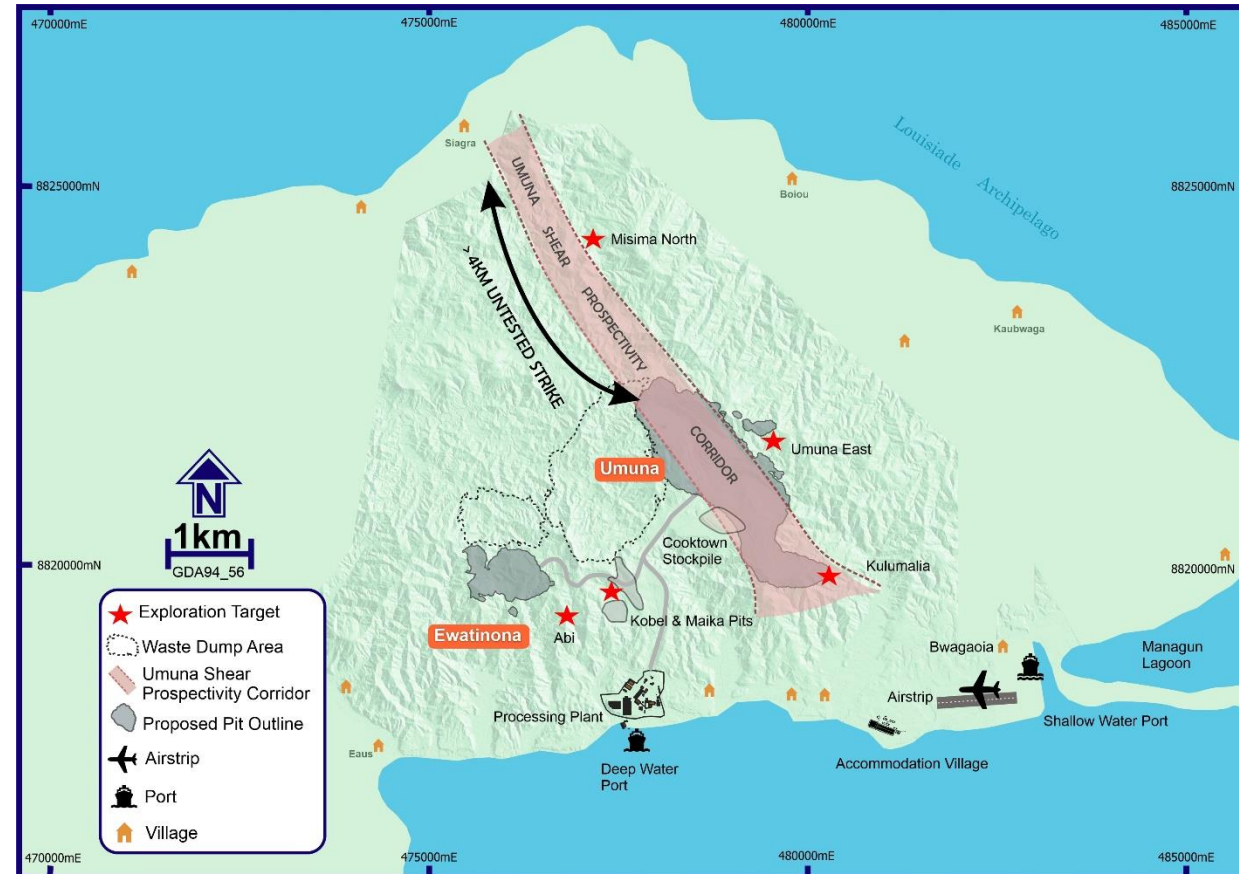
- 84m @ 7.20g/t Au
- 20m @ 17.04g/t Au
- 36m @ 8.50g/t Au
- 64m @ 4.13g/t Au
- 40m @ 6.49g/t Au
- 78m @ 2.76g/t Au
- 57m @ 3.39g/t Au
- 90m @ 1.84g/t Au
- 66m @ 2.40g/t Au
- 68m @ 2.21g/t Au
- 71m @ 2.08g/t Au
- 40m @ 3.69g/t Au
- 76m @ 1.88g/t Au
- 52m @ 2.51g/t Au
- 31m @ 4.04g/t Au



# Misima Exploration Strategy

- Current **3.3Moz Umuna Resource** is open at depth and drill-constrained
- Exploration focus remains on near-surface mineralisation and key exploration targets include:
  - **Kobel & Maika:** Historically mined by Placer with limited modern exploration since mine closure
  - **Umuna East:** Near surface oxide target successfully drilled in 2019 exploration program<sup>1</sup>
  - **Abi:** Follow up discovery hole GDD044<sup>1</sup>
    - 23.6m @ 2.91g/t Au from 7.4m, incl. 13.5m @ 4.60g/t Au from 17.5m
  - **Ewatinona:** 200koz Resource, mineralisation open at depth and along strike
  - **Misima North:** >4km untested strike, structural targets with potential for Umuna repeats

1. KSN.ASX announcements 29/1/19, 18/9/2019



**MISIMA GOLD PROJECT TARGET AREAS**  
Recent drilling has successfully targeted shallow mineralisation across several key prospects

# Misima: Community Support the Key to Success

- 130-year history of artisanal mining
- Skilled resident workforce, with over 100 FIFO Misima residents
- Kingston working closely with local landowners
- Strong local support of Kingston's program, residents keen to see mine re-open

	Misima locals	PNG nationals	Expatriates
Placer 1989-03	79%	5%	17%
Kingston current	78%	20%	2%

- Community development roadmap in place that underpins strong engagement:
  - Identify landowner priorities
  - Community meetings
  - Local employment
  - Community support projects
  - Identify sustainable business opportunities



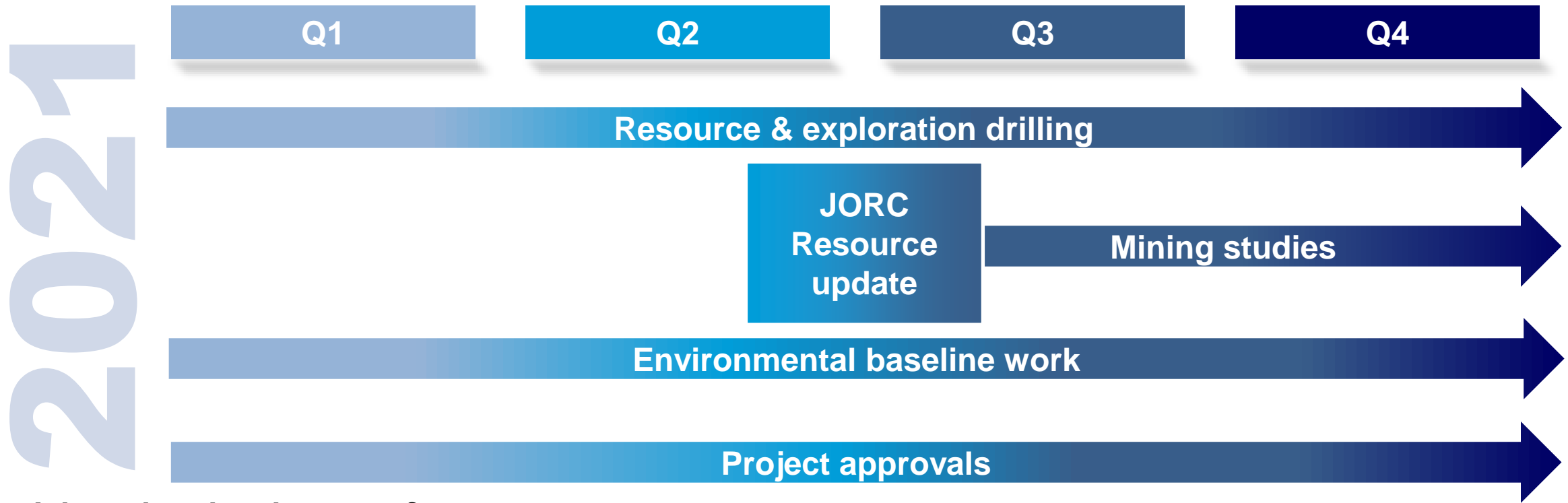
Misima Councillors' meeting



Misima School's year-7 excursion to core yard



# Misima: Active Work Program Advancing

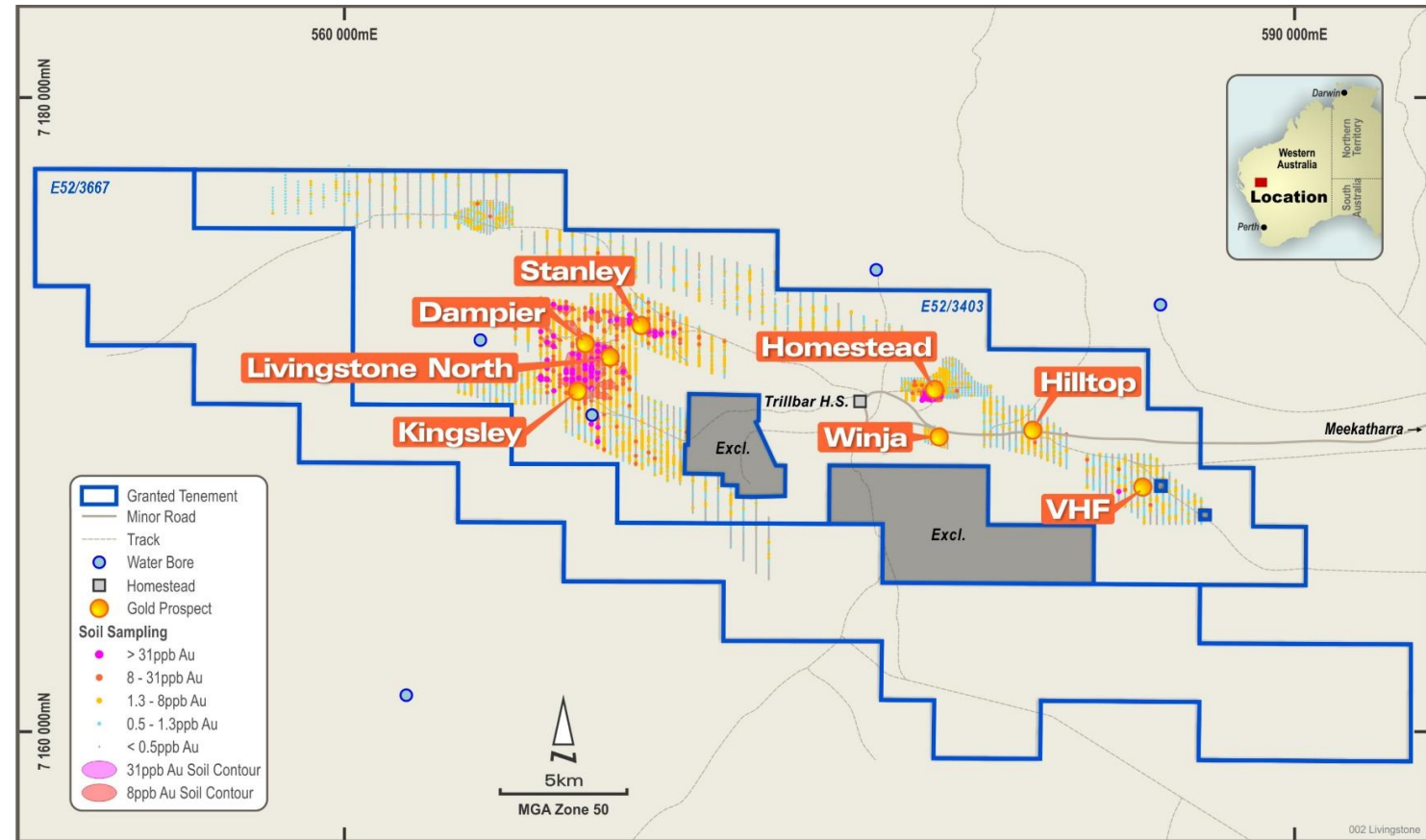


## ***Advancing development focus***

- Environmental baseline work ongoing, EIS activity to step up post PFS
- Targeting resource update by mid-2021, with commencement of DFS to follow
- Geotechnical and metallurgical test work for DFS underway
- Drilling to continue throughout CY2021

# Livingstone Gold Project, WA (75%)

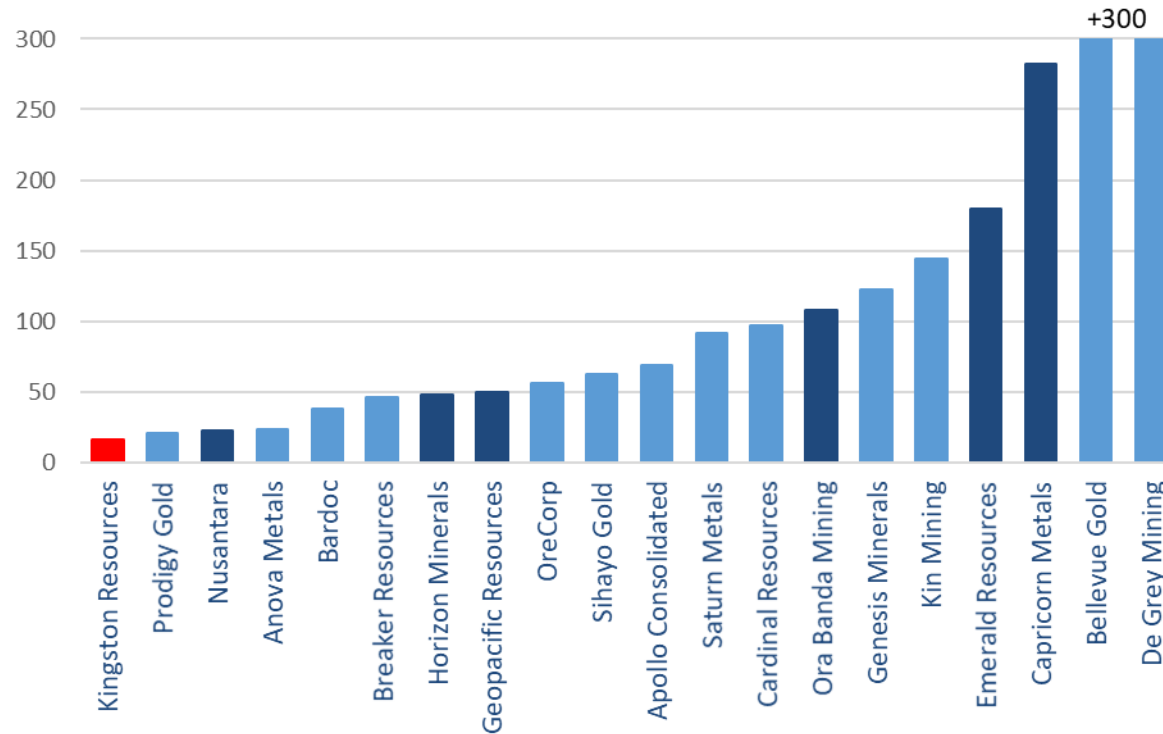
- Kingsley prospect discovered in 2018 below auger soil anomaly
- Homestead Prospect contains a 49,000oz JORC 2004 Resource<sup>1</sup>, with shallow high-grade intersections including:
  - 18m @ 7.85g/t Au from 68m
  - 5m @ 20.5g/t Au from 3m
  - 7m @ 12.59g/t Au from 35m
- Best intercepts at Kingsley reported to date include<sup>1</sup>:
  - 1m @ 100.25g/t Au from 88m
  - 15m @ 4.66g/t Au from surface
  - 10m @ 11.95g/t Au from 20m
  - 22m @ 3.65g/t Au from 20m,
  - 5m @ 3.68 g/t Au from 12m
  - 10m @ 4.15g/t Au from surface,
  - 8m @ 3.32g/t Au from 92m
  - 20m @ 1.96 g/t Au from 1m



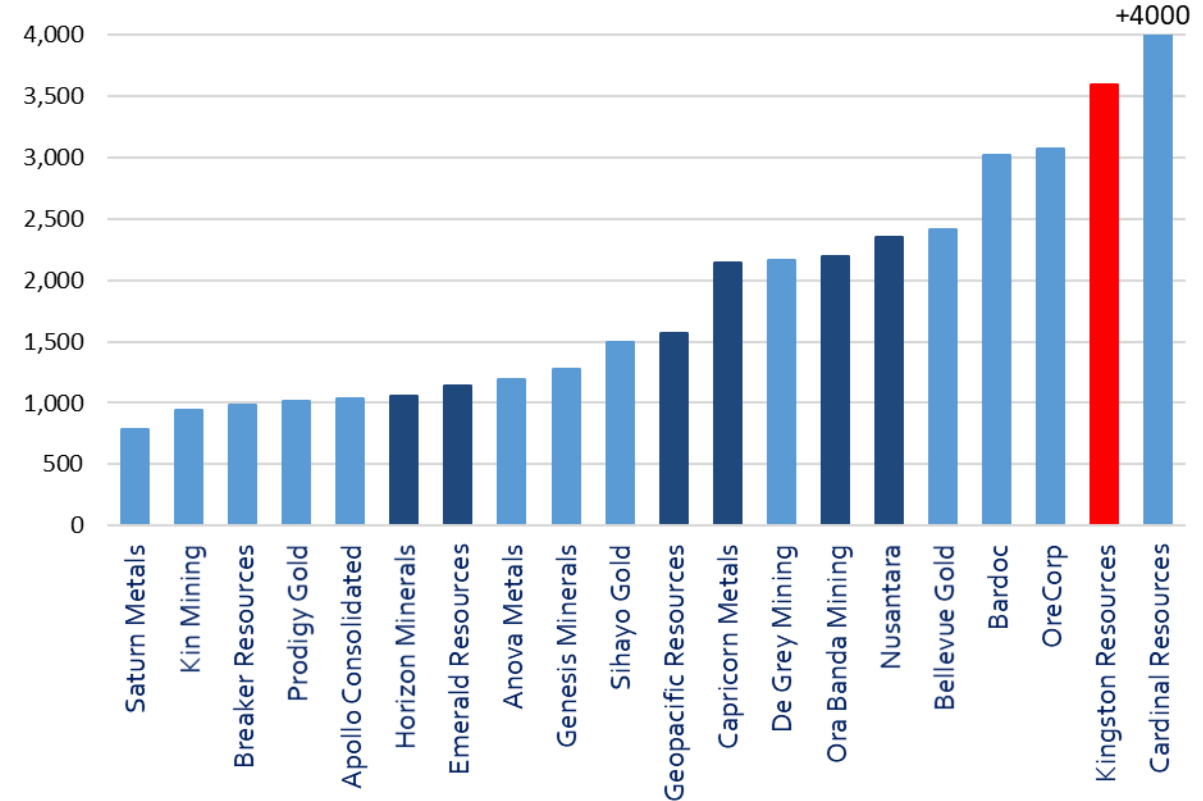
1. See KSN announcements 29/11/16, 12/4/17, 5/11/18, 24/9/19, 20/8/20, 14/9/20, 30/9/20  
[www.kingstonresources.com.au](http://www.kingstonresources.com.au)

# Peer Comparison

EV/Oz of Resource ASX listed explorers & developers



Resource (koz gold)



## Notes:

- EV calculated as market capitalisation as at 16 November 2020 plus net debt as at 30 Sept 2020
- Resource ounces used are Total Resources and include varying compositions of Measured, Indicated and Inferred.
- Companies which have released a BFS/DFS are shaded dark blue, remaining companies are at an earlier stage of exploration/development.
- **Cautionary Statement:** The companies included in the above tables and graphs have a varying composition of measured, indicated and inferred resource and are at various stages of development, they are not intended to be identical in nature to Kingston Resources.
- For data sources please see Slide 25



# Key Investment Takeaways

Kingston Resources' vision is to become a significant new ASX-listed gold producer operating in the Asia-Pacific region

- ✓ **Exceptional large-scale production opportunity** at the Misima Gold Project in PNG
- ✓ **PFS** provides an outstanding platform demonstrating a **17-year mine life at 130,000oz pa at a low AISC of A\$1,159/oz**
- ✓ **Significantly de-risked** given extensive production history
- ✓ **3.6Moz Resource and 1.35Moz Reserve** provide the backbone of development strategy
- ✓ **Misima ticks all the boxes:** proven geological setting, proven production history, high-quality untested exploration targets
- ✓ **Drilling the high-grade Livingstone Gold Project** in WA
- ✓ **Experienced board and management team** with proven track record of project development



Historical photograph of Misima mill, circa 1990s



Current work program at the 3.6Moz Misima Gold Project



**Andrew Corbett**  
Managing Director

**Chris Drew**  
Chief Financial Officer

**P: +61 2 8021 7492**

**E: [info@kingstonresources.com.au](mailto:info@kingstonresources.com.au)**

**Kingston Resources Limited**

Suite 201/110 Pacific Highway,  
North Sydney, NSW 2060

[www.kingstonresources.com.au](http://www.kingstonresources.com.au)

**KSN**

**KINGSTON  
RESOURCES  
LIMITED**



**ASX: KSN**

**Research Coverage**

Canaccord

Acova Capital

Reg Spencer

Michael Evans





# Appendix: PNG – A large growing global commodities nation

- Proven mining jurisdiction
  - Successful mining track record over long term
  - Globally significant mining projects
- Major global producer of gold and LNG
  - 2.3Moz pa Au production (15<sup>th</sup> largest global producer)<sup>1</sup>
  - 9.5bcm LNG exports (10<sup>th</sup> largest global producer)<sup>2</sup>
- Strong investment pipeline driving significant growth<sup>3</sup>
  - Papua LNG US\$13bn approved (56% of GDP)
  - P'nyang LNG US\$3b pending approval (13% of GDP)
  - Wafi Golpu US\$2.8b pending approval (12% of GDP)



1. USGS Mineral Commodity Summaries 2019
2. BP Statistical Review of World Energy 2019
3. Company websites, World Bank estimates



# Appendix: Mineral Resources and Ore Reserves

Deposit	Oxide	Classification	Cutoff g/t Au	Tonnes Mt	Gold g/t Au	Silver g/t Ag	Au Moz	Ag Moz
Umuna within USD\$1700 Pit Shell	Oxide	Indicated	0.3	6.3	0.63	10.7	0.1	2.2
		Inferred	0.3	12.1	0.67	10.4	0.3	4.1
	Primary	Indicated	0.3	57.7	0.82	3.9	1.5	7.2
		Inferred	0.3	53.2	0.75	5.1	1.3	8.7
	Sub-total	Indicated		64.0	0.80	4.6	1.6	9.4
		Inferred		65.3	0.74	6.1	1.6	12.7
Total	Combined		129.3	0.77	5.3	3.2	22.2	
Umuna Extension outside USD\$1700 Pit Shell	Primary	Inferred	0.8	3.4	1.35	4.1	0.1	0.4
Umuna Total Resource	Indicated			64.0	0.80	4.5	1.6	9.4
	Inferred			68.7	0.77	5.9	1.7	13.2
Umuna TOTAL				132.7	0.78	5.3	3.3	22.6
Cooktown Stockpile	Ox-Tran-Prim	Inferred	0.5	3.8	0.65	7.0	0.1	0.9
Cooktown Stockpile				3.8	0.65	7.0	0.1	0.9
Ewatinona within USD\$1700 Pit Shell	Oxide	Indicated	0.3	0.4	0.68	3.2	0.01	0.04
		Inferred	0.3	1.8	0.69	3.4	0.04	0.20
	Primary	Indicated	0.3	3.9	0.89	2.5	0.11	0.31
		Inferred	0.3	1.8	0.77	2.8	0.04	0.16
	Sub-total	Indicated		4.3	0.87	2.6	0.12	0.4
		Inferred		3.6	0.73	3.1	0.08	0.4
Ewatinona TOTAL				7.9	0.81	2.8	0.2	0.7
MISIMA	Indicated			68.3	0.80	4.5	1.8	9.8
	Inferred			76.1	0.76	5.9	1.9	14.4
MISIMA TOTAL				144	0.78	5.2	3.6	24.2

Notes:

- JORC Code 2012 definitions are used for the Mineral Resources.
- Rounding may cause apparent computational errors
- Reported at USD1,700/oz gold price
- Cut-off grades are based on mining studies completed as part of 2020 Misima PFS
- Pit shells derived based on historical and PFS mining parameters

Ore Reserves	Mt	Au g/t	Ag g/t	Au koz	Ag koz
Ewatinona					
Probable	3.5	0.84	2.6	95	291
Ewatinona Total	3.5	0.84	2.6	95	291
Umuna					
Probable	44.8	0.87	4.3	1,251	6,191
Umuna Total	44.8	0.87	4.3	1,251	6,191
Probable	48.3	0.87	4.2	1,347	6,482
Misima Total	48.3	0.87	4.2	1,347	6,482

Notes:

- JORC Code 2012 definitions are used for the Ore Reserves
- Rounding may cause apparent computational errors
- Au koz refers to contained gold or silver in the mined ore before process recoveries are applied.
- Ore Reserves are based on a gold price of US\$1500/oz and cut off grades of 0.28 g/t Au for oxide ore and 0.33 g/t Au for fresh ore.
- Au koz refers to contained gold in the mined ore before process recoveries are applied.
- For clarification, there are no Proved Ore Reserves included in the Total Ore Reserve
- Ore Reserves do not include the Cooktown low grade stockpile left from the previous open cut mine.

# Appendix: Top 25 Australian and PNG gold deposits

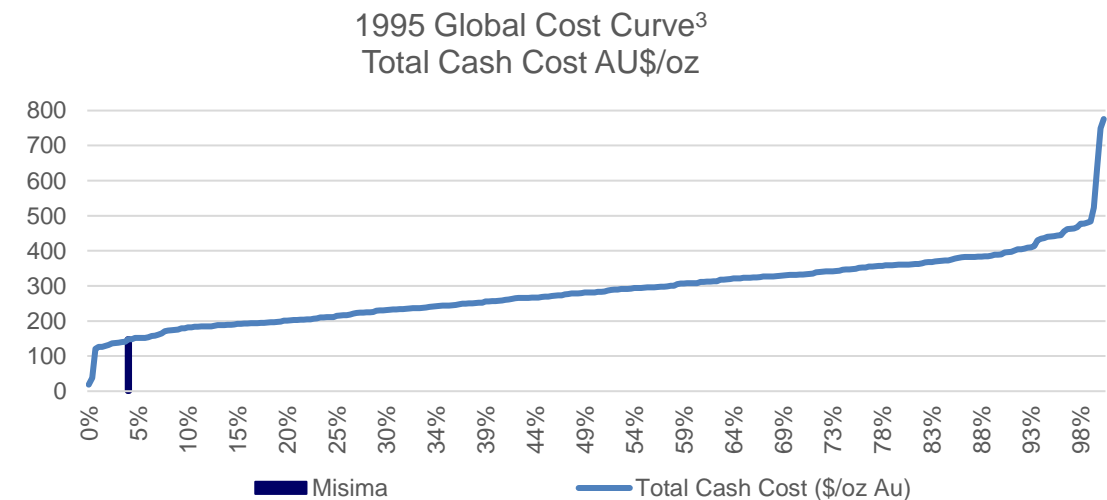
Top 25 Australian and PNG gold deposits				Total Resource <sup>1</sup>		
No.	Location	Mine	Owner	Ore mt	Grade g/t	Contained Au Moz
1	PNG	Lihir	Newcrest	690	2.30	50.0
2	Australia	Cadia/Ridgeway	Newcrest	3,170	0.37	38.0
3	PNG	Wafi-Golpu	Newcrest/Harmony Gold	1,000	0.83	26.0
4	Australia	Boddington	Newmont	835	0.64	17.3
5	Australia	Golden Mile	Newmont / Barrick	273	1.33	11.7
6	PNG	Porgera	Barrick / Zijin	76	4.53	11.1
7	Australia	Tropicana	Anglogold / IGO	136	1.76	7.7
8	Australia	Granny Smith	Gold Fields	39	5.70	7.1
9	Australia	Tanami	Newmont	45	4.80	7.0
10	Australia	Telfer	Newcrest	229	0.88	6.5
11	Australia	Lake Cowal	Evolution	200	0.95	6.1
12	Australia	Sunrise Dam	Anglogold / Ashanti	96	1.93	5.9
13	Australia	Gruyere	Goldfields/Gold Road	140	1.29	5.8
14	Australia	Duketon	Regis	186	0.93	5.6
15	Australia	Carosue Dam	Saracen	80	1.90	5.0
16	Australia	Gwalia	St Barbara	23	6.50	4.8
17	Australia	Jundee	Northern Star	38	3.55	4.3
18	PNG	Hidden Valley	Harmony Gold	89	1.43	4.1
19	Australia	King of the Hills	Red 5	91	1.40	4.1
20	Australia	St Ives	Gold Fields	34	3.47	3.8
21	PNG	Misima	Kingston Resources	144	0.78	3.6
22	Australia	Thunderbox	Saracen	66	1.70	3.6
23	Australia	Mt Morgans	Dacian	55	2.00	3.5
24	Australia	Mungari	Evolution	51	1.59	2.6
25	Australia	Big Bell	Westgold	24	2.75	2.1

# Appendix : Historical Profitable Production, Ultra-Low Costs

- 130-year mining history – gold first discovered in 1889
- Misima open pit operated by Placer Pacific from 1989 to 2001 – closed when the gold price was below US\$300/oz
- Historical production (1989-2004) averaged 230,000ozpa with peak production of 370,000oz in 1992
- Average LOM cash cost US\$218/oz, with 91.7% recovery and very low-cost processing<sup>2</sup>
- Straightforward, well-understood geology and metallurgy – significantly de-risks future mine development

## Misima statistics from Placer Pacific Annual Reports 1989 – 2004 <sup>1</sup>

Reserves at end of 1990	1.9Moz
Reserve grade at end of 1990	1.26g/t Au
Grade milled between 1991 and 2004 (inclusive)	1.53g/t Au
Gold produced between 1991 and 2004 (inclusive)	3.3Moz
Grade reconciliation between Reserves and Milled	121%
Production reconciliation compared to 1990 estimate	172%
Average cash cost over LOM	US\$218/oz
Average price received over LOM	US\$345/oz
Margin	US\$128/oz
Margin	37%



1. Placer Annual Reports 1989 to 2004, Placer Archive

2. Kennedy, 1994, AUSIMM, "Misima Mines milling operation: one of the World's lowest cost conventional gold extraction plants"

3. Wood MacKenzie – Metals Cost League Reporting Tool



# Appendix: Misima Production Advantage

## PAPUA NEW GUINEA:

- Proven geological domain
- Large scale Au + Cu projects
- PNG is currently 15th largest gold producer globally, 60 tonnes pa

## MISIMA:

- Island location, Melanesian culture
- Supportive local landowners
- Today +100 Misima residents doing FIFO within PNG
- Trained, experienced mine workers

## APPROVALS:

- Transparent, stable mining regulations and approvals process
- Approved as a special mining lease (SML1)
- Fully rehabilitated and converted to an EL in 2012



## HISTORICAL MINING PARAMETERS:

- < 400m above sea level
- Low strip
- Low cost drill & blast
- Large scale fleet

## CURRENT INFRASTRUCTURE:

- Commercial airport, 3 flights per week
- Hospital, schools, housing
- Two ports, deep and shallow water
- Power: hydro-electric and diesel

## PROVEN METALLURGY:

- High recovery
- Free mill + coarse grind
- Low bond work index
- Low cost processing

# Appendix: Data Sources

## EV/Oz and Total Resource Charts – Slide 16 - Resource data for the included companies is sourced from the following announcements or reports

Company	Release Date	Announcement/Report
Anova Metals	18 Oct 2019	2019 Annual Report
Apollo Consolidated	28 April 2020	Corporate Presentation
Bardoc	17 March 2020	Bardoc PFS confirms potential for long-life gold project
Bellevue Gold	24 Feb 2020	Bellevue Resource increases 23% - Maiden Resource at Deacon
Breaker Resources	11 Oct 2019	2019 Annual Report
Capricorn Metals	17 April 2020	Gold Reserves Increase 35% to 1.2 Million Ounces
Cardinal Resources	18 April 2018	NI 43-101 Mineral Resource Estimation Technical Report
De Grey Mining	2 April 2020	Total Gold Mineral Resource increases to 2.2Moz
Emerald Resources	26 Sept 2019	2019 Annual Report
Geopacific Resources	22 March 2019	2018 Annual Report
Genesis Minerals	19 Feb 2020	Investor Presentation
Horizon Minerals	10 Feb 2020	Investor Presentation
Kin Mining	18 Feb 2020	Investor Presentation
Kingston Resources	27 Nov 2017	Misima JORC Resource 2.8Moz Au
Nusantara	28 April 2020	Mineral Resource increases 18% to 2.35M ounces
OreCorp	10 March 2020	Investor Presentation
Ora Banda	28 April 2020	Investor Presentation
Prodigy Gold	19 Feb 2020	Investor Presentation
Saturn Metals	14 Oct 2019	Apollo Hill Resource Upgrade
Sihayo Gold	3 August 2018	Feasibility Study Completion
Spectrum Resources	21 Feb 2020	Penny West Exploration Update

## Top 25 Deposits Table – Slide 17 - Resource data for each of the included company's deposits is sourced from the following announcements or reports

Company	Release Date	Announcement/Report
AngloGold Ashanti Ltd.	Available on website	2017 Mineral Resource and Ore Reserve Report
Barrick Mining Corp.	13 February 2019	2018 Mineral Resource and Ore Reserve Statement
Dacian Gold Ltd.	6 August 2018	Measured and Indicated Resources an Mt Morgans Increases 11% to 2.5Moz
Evolution Mining Ltd.	19 October, 2018.	2018 Annual Report
Gold Fields Ltd.	Available on website	2017 Mineral Resources and Mineral Reserves Supplement
Gold Road Resources Ltd.	13 March 2019	Annual Mineral Resource and Reserve Statement
Harmony Gold Ltd.	Available on website	2018 Mineral Resources and Mineral Reserves Supplement
Independence Group Ltd.	20 February 2019.	2018 Mineral Resource and Ore Reserve Statement
Newcrest Mining Ltd	14 February 2019	2018 Mineral Resources and Ore Reserve Statement
Newmont Mining Corp.	21 February 2019	2018 Mineral Resource and Ore Reserve Statement
Northern Star Resources Ltd	21 August 2018	2018 Annual Report
Red 5 Ltd	20 May 2019	Company Announcement
Regis Resources Ltd.	25 October 2018	2018 Annual Report
Saracen Mineral Holdings Ltd.	5 September 2018	2018 Annual Report
St Barbara Ltd.	14 September 2018	2018 Annual Report
Westgold Resources Ltd.	26 October 2018	2018 Annual Report