



25 NOVEMBER 2020

ASX Code: BLZ
Shares: 262,500,000
Options: 237,500,000
Cash: \$2,104,000

Chairman: David Wheeler
Director: Mathew Walker
Director: Simon Coxhell

Secretary: Sonu Cheema

Registered Office

Suite 9, 330 Churchill Avenue
Subiaco, WA, 6008

Postal Address

PO Box 866, Subiaco
WA, 6904

Website

www.blazelimited.com.au

T: +61 (8) 6489 1600

F: +61 (8) 6489 1601

Blaze International Limited

Blaze is an exploration
company listed on the ASX.

The Company currently holds
active exploration ground in
Mt Magnet, Kirkalocka,
Warriedar and Leonora.

For enquiries please contact:

info@blazelimited.com.au

+61 (8) 6489 1600

DRILLING COMMENCES AT MT MAGNET SOUTH PROJECT



Blaze International Limited (**Blaze**) (**Company**) (**ASX:BLZ**) is pleased to announce the commencement of an initial aircore drilling program at Mt Magnet South to test the multiple target zones that have been identified from recent auger geochemical activities. The gold geochemical anomalies coincide with breaks in the magnetics of a large granite pluton and a large creek system which may be masking basement mineralised structures.

Kennedy Drilling Contractors mobilised to site this week and have now commenced drilling. The drilling program is initially planned to encompass approximately 40 - 50 drillholes on nominal 200 - 800 metre spaced northing sections (7 planned sections) with holes spaced at 50 metres east west along the sample lines. Total metres are anticipated to be approximately 2,600 metres. The drilling is expected to take approximately 10 days with all samples submitted soon thereafter. Results are anticipated to be returned within 3 - 4 weeks of submission.

Commenting on the program Simon Coxhell, Technical Director said, "The recent auger sampling has validated the previous work and identified a 4.5 kilometre zone of anomalous gold mineralisation (+50 ppb) which coincides with a prominent creek system and recent transported cover. The drill testing is designed to penetrate the surface regolith and test the areas at depth for anomalous gold."





Image 1: *Blaze Company Directors Mr Simon Coxhell and Mr Mathew Walker with Project Vendors*

MOUNT MAGNET SOUTH (TENEMENTS UNDER OPTION)

In July 2020, Blaze announced that it had entered into an option agreement to acquire a 100% interest in 3 exploration licences (52 sub-blocks) covering 147 square kilometres and located immediately south of Mt Magnet and north of its existing Kirkalocka tenement holding covering large portions of the Meekatharra-Wydney Greenstone Belt. Please refer Figure 1.



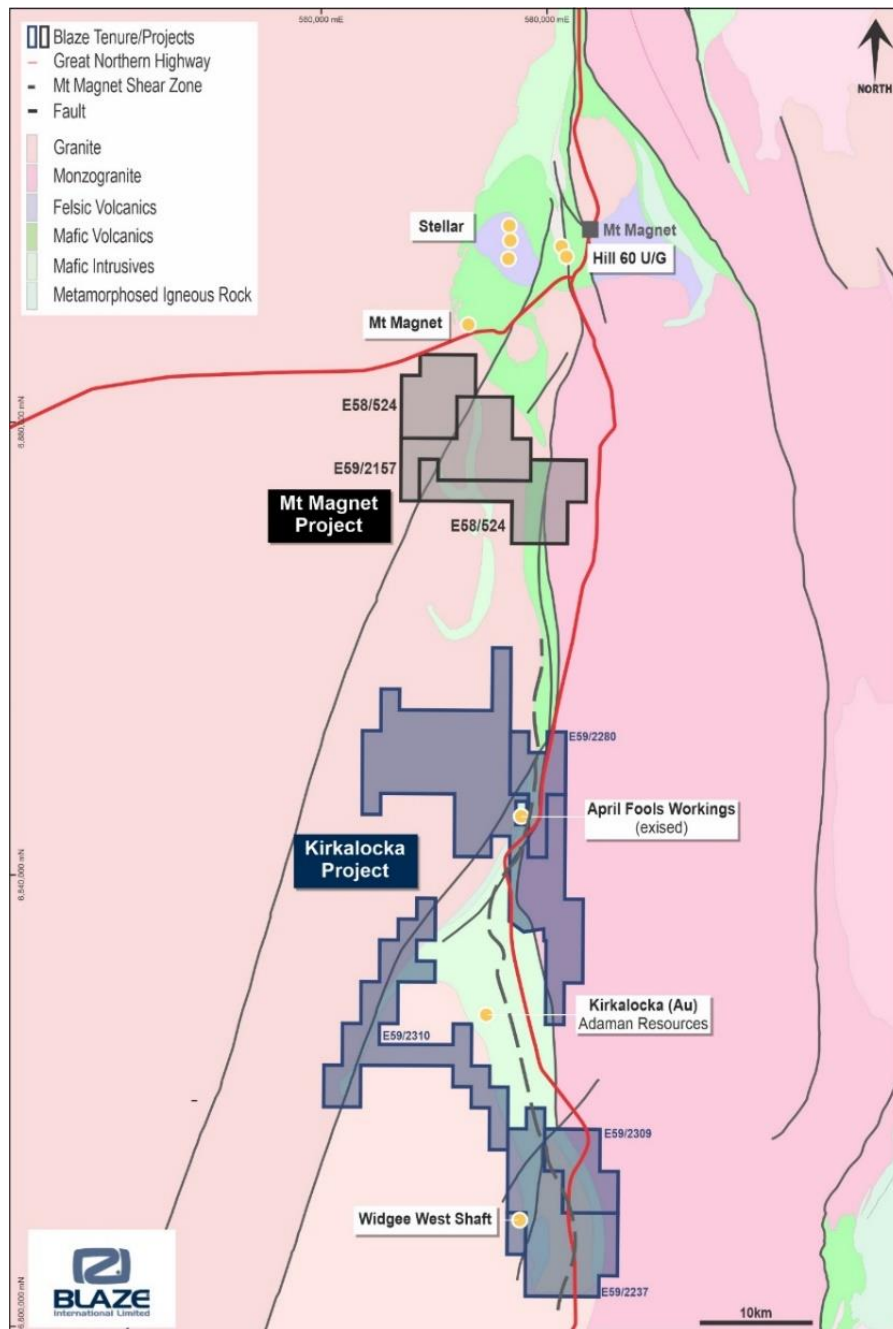


Figure 1: Location of optioned tenements relative to Blaze's existing Kirkalocka Project Holdings

The Project is currently held by a private explorer Eastern Goldfields Exploration Pty Ltd (**EGE**) who has been prospecting and exploring the tenements for a number of years. The systematic work completed by EGE has highlighted numerous gold soil geochemical anomalies considered prospective by Blaze for gold mineralisation.

In August and September Blaze completed geological mapping and interpretation and identified a major creek system cutting through the target areas and coinciding with the interpreted magnetic breaks and anomalous soil results.

Based on this the Company initiated a comprehensive auger geochemical program totalling 540 samples straddling this creek system with the aim of further defining anomalism within this corridor. Sampling was completed on a nominal 200 metre X 50 metre grid pattern and tightened up in areas of the previous anomalous soil results to provide additional clarity to the calibre, size and orientation of the zones.



Auger hole depths ranged from 0.1 to 3.2 metres (averaged 1 metre) with a maximum gold value of 140 ppb returned against a background of less than 5 ppb. The anomaly at a +50 ppb level covers more than 4.5 kilometres of strike (See Figures 2, 3 and 4).

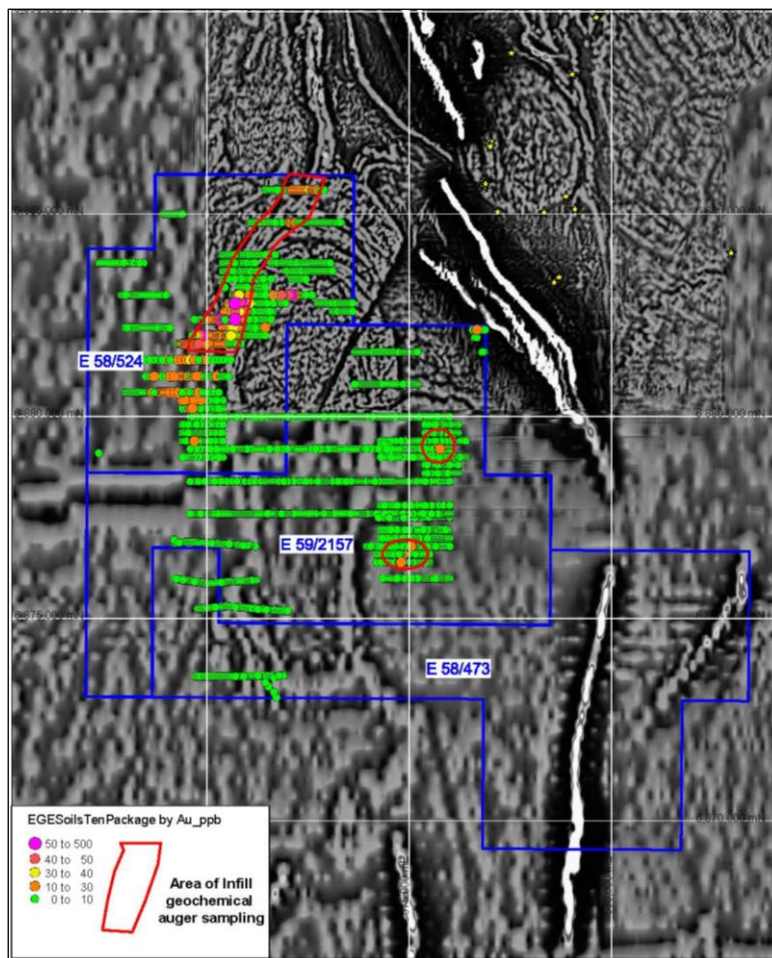


Figure 2: Mt Magnet Project with colour coded gold soil sample locations and priority areas auger sampled.

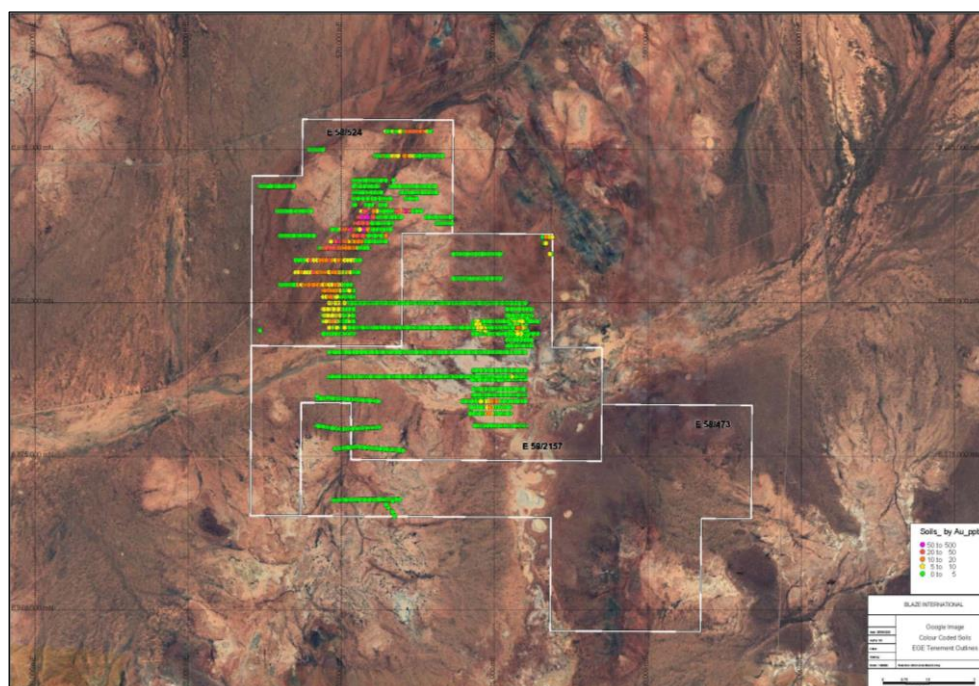


Figure 3: Mt Magnet Project with colour coded gold soil sample locations on Google Image.



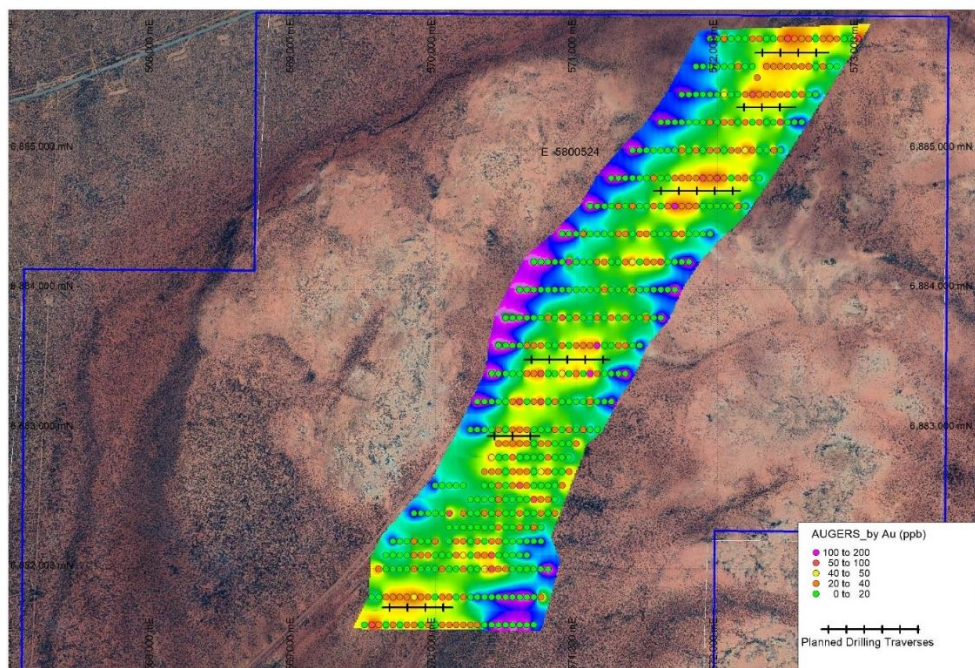


Figure 4: Mt Magnet Project with colour coded gold recent auger samples locations and grade (ppb) on Google Image.

This announcement has been authorised by the Board of Blaze International Limited.

Sonu Cheema

Company Secretary

Blaze International Limited

-ENDS-

Forward-Looking Statements

This document may include forward-looking statements. Forward-looking statements include, but are not limited to, statements concerning Blaze International Limited's planned exploration program and other statements that are not historical facts. When used in this document, the words such as "could," "plan," "estimate," "expect," "intend," "may", "potential," "should," and similar expressions are forward-looking statements. Although Blaze International Limited believes that its expectations reflected in these forward-looking statements are reasonable, such statements involve risks and uncertainties and no assurance can be given that actual results will be consistent with these forward-looking statements.

Competent person statement

Exploration or technical information in this release has been prepared by Mr. Simon Coxhell BSc, who is a Director of Blaze International Limited and a Member of the Australian Institute of Mining and Metallurgy. Mr. Coxhell has sufficient experience which is relevant to the style of mineralisation under consideration and to the activity which he is undertaking to qualify as a Competent Person as defined in the 2012 Edition of the "Australasian Code for Reporting of Exploration Results, Mineral Resources and Ore Reserves" (the JORC Code). Mr. Coxhell consents to the report being issued in the form and context in which it appears.

