

About Legacy Iron Ore

Legacy Iron Ore Limited ("Legacy Iron" or the "Company") is a Western Australian based Company, focused on iron ore, base metals, tungsten and gold development and mineral discovery.

Legacy Iron's mission is to increase shareholder wealth through capital growth, created via the discovery, development and operation of profitable mining assets.

The Company was listed on the Australian Securities Exchange on 8 July 2008. Since then, Legacy Iron has had a number of iron ore, manganese and gold discoveries which are now undergoing drilling and resource definition.

Board

Mr Sumit Deb, Non-Executive Chairman

Mr Rakesh Gupta, Chief Executive Officer and board member

Mr Devanathan Ramachandran, Non-Executive Director

Mr Amitava Mukherjee, Non-Executive Director

Mr Alok Kumar Mehta, Non-Executive Director

Ben Donovan, Company Secretary

Key Projects

Mt Bevan Iron Ore Project

South Laverton Gold Project

East Kimberley Gold, Base Metals and REE Project

Enquiries

Rakesh Gupta

Chief Executive Officer

Phone: +61 8 9421 2000

ASX Codes: LCY

LEVEL 6
200 ADELAIDE TERRACE
PERTH WA 6000

PO BOX 5768
ST GEORGES TERRACE WA 6831

Phone: +61 8 9421 2005
Fax: +61 8 9421 2001
Email: info@legacyiron.com.au
Web: www.legacyiron.com.au

DRILLING TO COMMENCE AT PROMISING TARGET ZONE AT YILGANGI

HIGHLIGHTS

- **Promising drill ready targets at Yilgangi identified**
- **10-12 RC holes planned for approx. 1,000m**
- **RC Rig to commence drilling on 16th December 2020**
- **Field traverse sampling confirmed areas for investigation**
- **Further resource work is scheduled at Yilgangi in 2021**

Legacy Iron Limited (ASX: LCY) is pleased to announce that a drill rig has arrived on site and is to set to commence a drilling program at the Yilgangi gold deposit.

A series of promising drill ready targets were generated from previous drilling and field traverse sampling work carried out in 2018/19. Multiple early-stage targets were identified through Au anomalies from surface sampling conducted in 2019.

Approximately 1,000m of RC drilling is planned to be carried out during the period of 16 December to 24 December 2020 to increase confidence around the known geology of the Yilgangi project and to provide additional confidence for further exploration targeting planned in early 2021.

It is envisaged that current drilling will also delineate additional mineralised zones at depth and along strike of the Golden Rainbow deposit which has a JORC 2008 resource. This drilling will also provide additional data into any planned resource upgrade at the Golden Rainbow deposit.

Commenting on the drilling, Chief Executive Officer Rakesh Gupta said "we continue to work towards the upgrading of resources at the Mt Celia project as we move towards our goal of beginning production. This drilling provides additional confidence in the region and has the potential to develop additional resources as satellite pits to our main Mt Celia project."

Yilgangi Project

The Yilgangi gold deposit forms part of Legacy Iron's South Laverton Gold Project which includes Mt Celia, Yilgangi, Yerilla, Patricia North and Sunrise Bore tenements (figure 1).

The Yilgangi Project includes two exploration tenements (E31/1019 and E31/1020) and two mining leases (M31/426 and M31/427) situated in a favourable geological setting hosted in target typical altered Greenstone supercrustal volcanic rock.

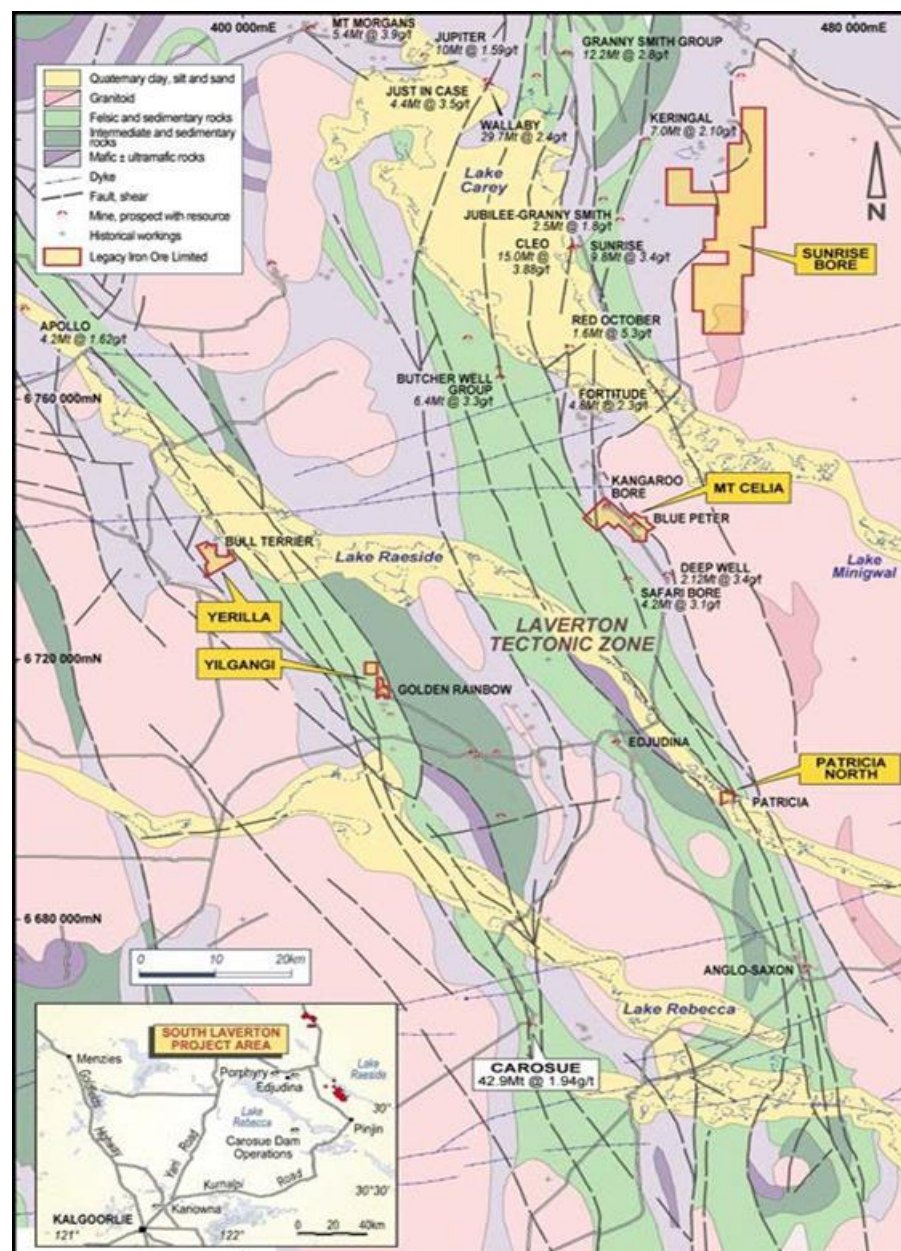


Figure 1 Location of Yilgangi with reference to the Legacy Iron South Laverton Project region

Numerous gold anomalies exist in the Golden Rainbow prospect area where several drill holes have been completed and the gold mineralisation was tested to a shallow depth only.

In 2019 a soil sampling campaign was completed to explore for potential leaders in strike extension. The soil sampling results (analysed by **MMI Analysis**) detected several northwest-striking potential anomalies parallel to regional geological structures (Figure 2, table 1 and refer ASX announcement 30 April 2019).

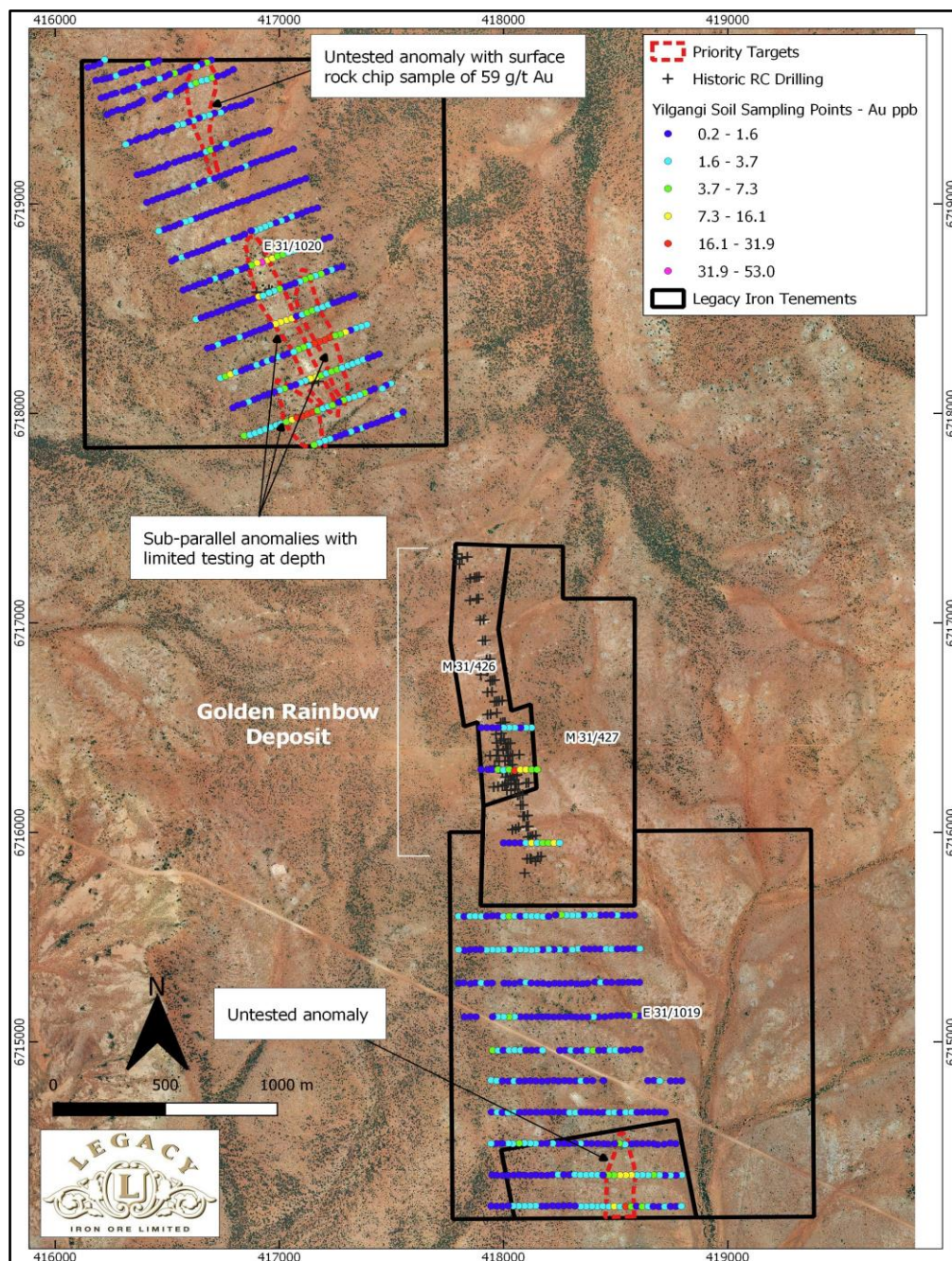


Figure 2: Priority areas for follow-up exploration based on soil sampling results (MMI Analysis)

