

## ASX ANNOUNCEMENT

By e-lodgement  
12<sup>th</sup> January 2021



# More excellent infill hits at Rebecca gold deposit - next phase of work underway



Apollo Consolidated Limited (ASX: AOP) (“Apollo”, “the Company”) is pleased to provide the latest update on drilling activities at its 100%-owned +1Moz<sup>1</sup> **Lake Rebecca Gold Project** located 150km east of Kalgoorlie in the West Australian goldfields.

### Highlights:

- The **Rebecca** deposit continues to grow, with new zones of gold mineralisation emerging through ongoing infill and step-out Reverse Circulation (RC) drilling:
  - ❖ **21m @ 2.45g/t Au and 7m @ 2.09 g/t Au** in RCLR0729 – STRONG INFILL TEST
  - ❖ **11m @ 2.17g/t Au, 9m @ 1.79g/t Au, 5m @ 3.27g/t Au and 4m @ 2.37g/t Au** in RCLR0730 – EXTENDS HANGINGWALL ZONE
  - ❖ **22m @ 1.31g/t Au** in RCLR0741 – NEW FOOTWALL ZONE
  - ❖ **10m @ 2.14g/t Au and 7m @ 2.21g/t Au** in RCLR0731 – STRONG INFILL TEST
- Infill drilling confirms geological interpretation and locates important extensions to mineralised hangingwall and footwall zones
- New step-out drilling at the **Cleo** discovery extends mineralisation and strong >0.20g/t gold anomalism, expanding the zone to more than 350m strike and up to 150m wide. The anomalous footprint remains open in most directions and will receive continued drill-testing to determine potential for Mineral Resources
- Continued and sustained activity over 2020 made significant progress including strong results from infill and step-down Mineral Resource definition drilling at the **Rebecca, Duchess and Duke** deposits, and the identification of new mineralisation in under-explored areas
- Results remain pending for four diamond holes completed at Rebecca
- All results to be included in an updated Mineral Resource estimate planned for completion by Q2 2021

This update reports all assay results received since Apollo's last release (*ASX: AOP 7<sup>th</sup> December 'Drilling continues to grow Rebecca Gold Project'*) and completes reporting of all 2020 RC drilling. These results include strong infill gold hits in several parts of the 775,000oz<sup>1</sup> **Rebecca** deposit, and step-out holes at the **Cleo** discovery (Figure 1).

A total of 15 holes are reported here and are detailed in Table 1.

Assay results remain pending for four diamond holes completed late 2020. All results will be incorporated into an updated Mineral Resource estimation work scheduled for this Quarter. Additionally, the Company has flown a detailed photo and topographical survey and geotechnical drilling as precursor works to commercial studies.

### Rebecca Deposit

Infill and step-down RC drill holes have returned significant intercepts to 22m wide that will likely add new mineralisation to the geological interpretation.

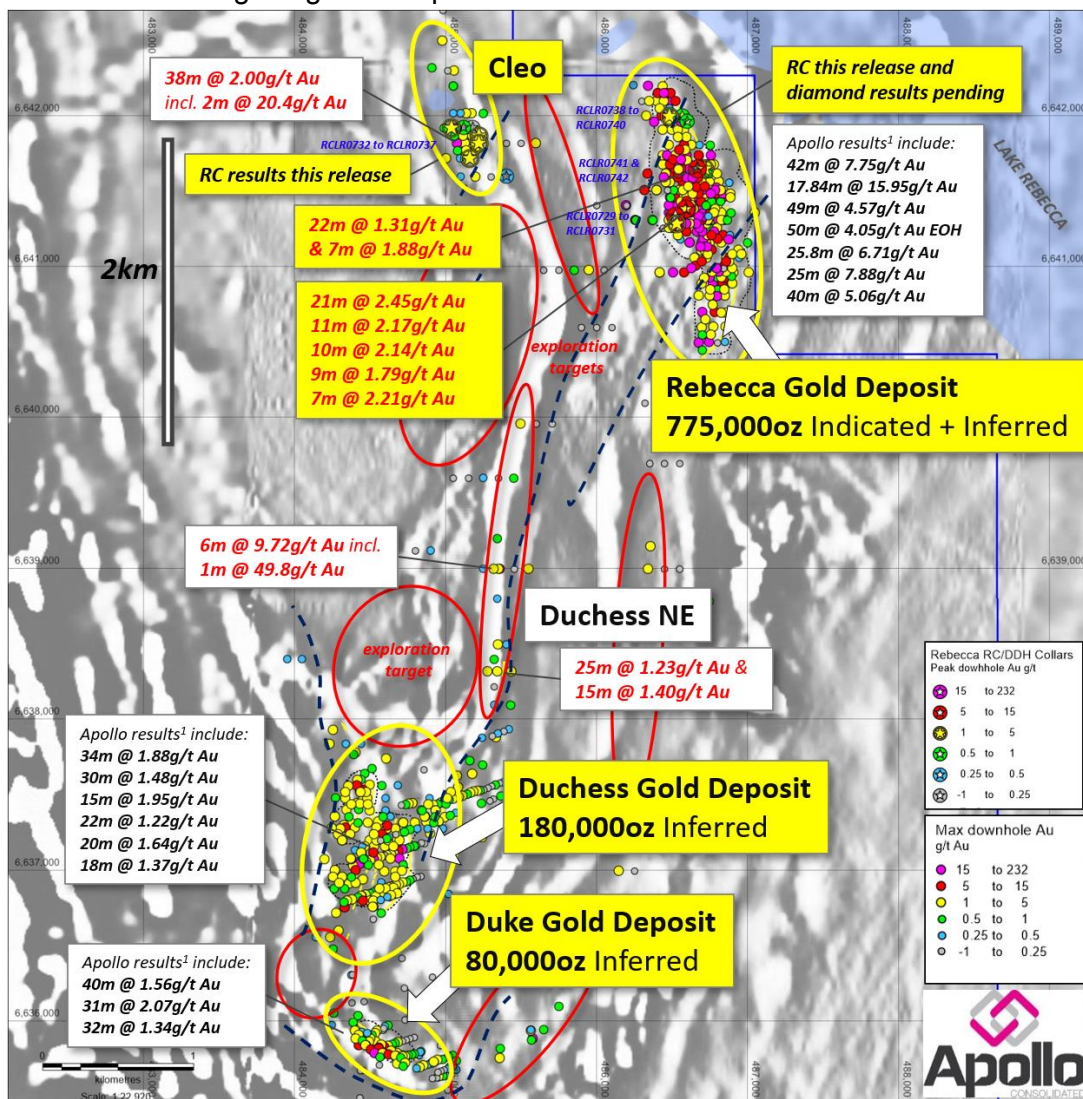


Figure 1. Location of **Rebecca**, **Duchess** and **Duke** Mineral Resources<sup>1</sup> on aeromagnetic imagery (RHS) showing drillhole collars this release as stars & colour-coded for peak downhole gold values. Better intercepts reported in this release are shown in yellow boxes. Image also has all previously reported RC and/or diamond drill collars<sup>2</sup> and targets for ongoing exploration drilling (red). Refer to Notes 1-3 for details of Mineral Resource reporting and previous RC and diamond drilling activities.

On infill section 6641335N, pre-collar hole RCLR0730 intersected a series of hits in the hangingwall of the **Jennifer** structure (see Figure 2 below), including **5m @ 3.27g/t Au** from 230m, **11m @ 2.17g/t Au** from 238m, **9m @ 1.79g/t Au** from 254m. This hole provides a 70m down-dip extension to this mineralised zone and supports strong mineralisation on adjoining sections. The drillhole will be continued with a diamond 'tail' to test the Jennifer structure.

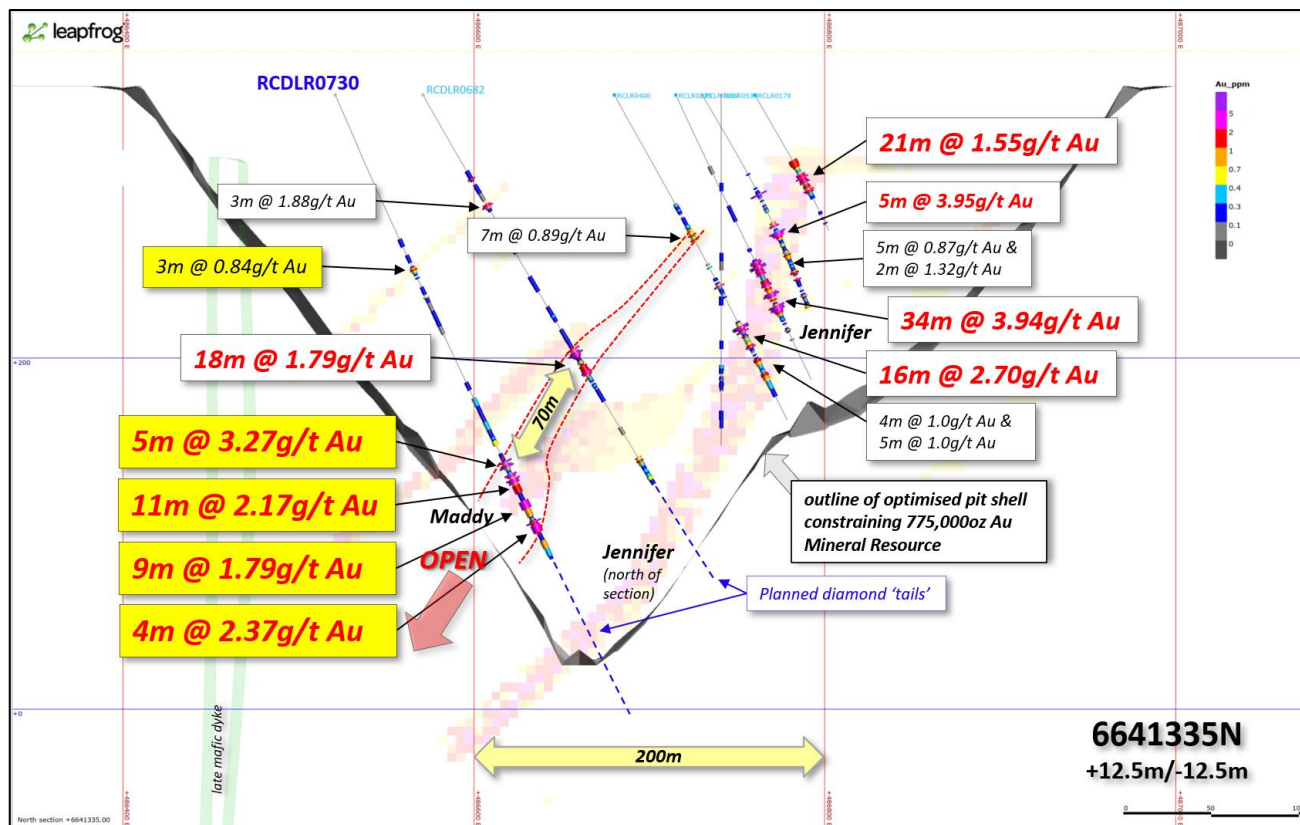


Figure 2. Cross-section view Rebecca deposit 6641335N showing intercepts in this release in yellow, the distribution of gold mineralisation in the Rebecca Mineral Resource block model and Apollo's earlier drill results<sup>2</sup> in white. Grey outline is the 3D optimised pit shell used to constrain reported Mineral Resources.

On section 6643850N (50m to the north of Figure 2), infill hole RCLR0729 intersected **21m @ 2.45g/t Au** from 209m, in a position consistent with geological interpretation and confirming strong gold mineralisation in adjacent holes. The hole continued downward to test a down-dip position on the Jennifer structure, intersecting **7m @ 1.24g/t Au** and **7m @ 2.09g/t Au** from 285m and 301m respectively. The Jennifer structure is interpreted to remain open down plunge to the NW in this area and will receive continued exploration drilling.

Drillhole RCLR0731 on section 6641285N (50m to the south of Figure 2) hit **10m @ 2.14g/t Au** from 250m in a hangingwall position, and **7m @ 2.21g/t Au** from 312m on the Jennifer structure. The hangingwall structures remain lightly explored southwards from this section and offer good exploration potential into undrilled areas.

Shallow drilling on section 6641650N has identified new near-surface mineralisation in the footwall (east side) of the **Laura** structure with RCLR0741 intersecting **22m @ 1.31g/t Au** from 120m (Figure 3), indicating strong potential to provide shallow mineralisation to a future mine plan. The strike and dip extensions of this hit are under-explored and will receive continued RC drilling.

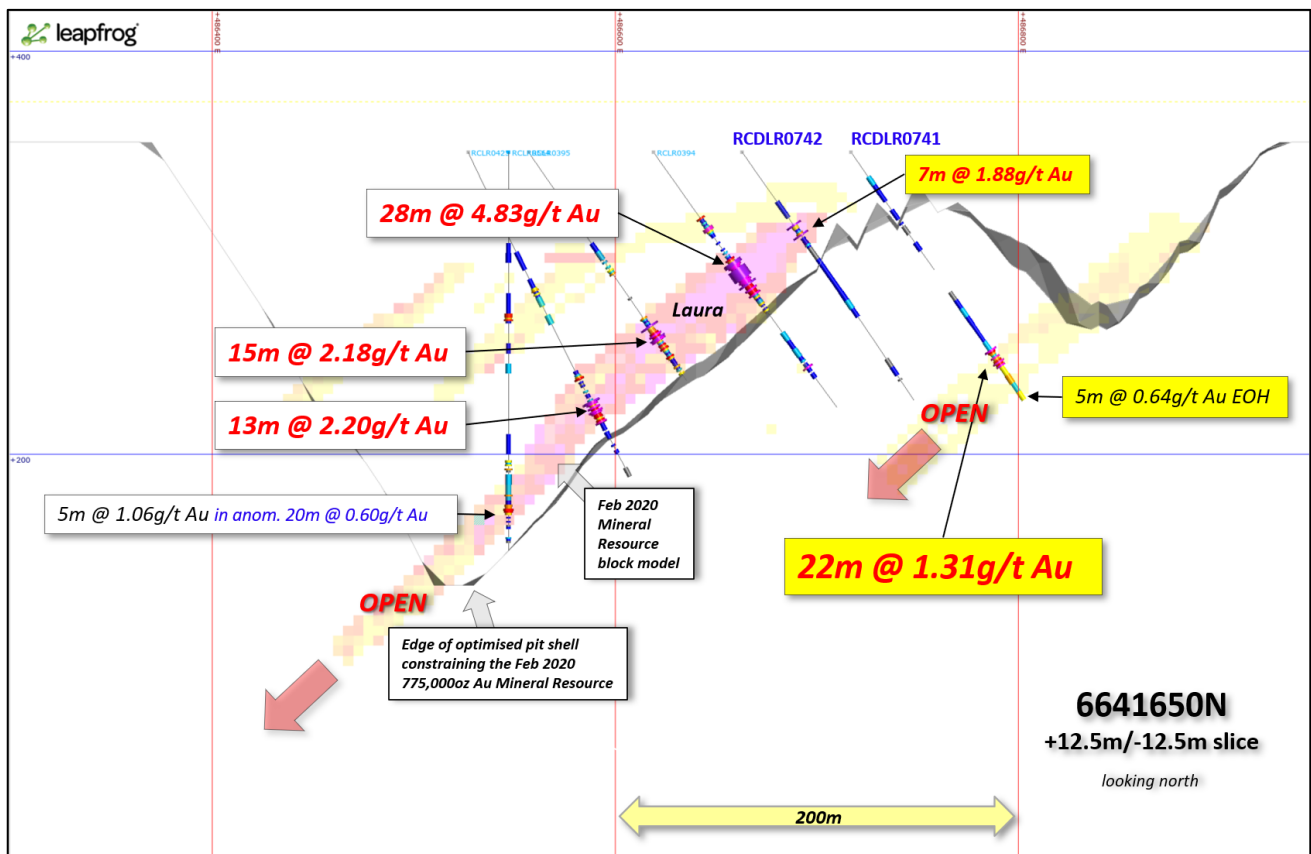


Figure 3. Cross-section view Rebecca deposit 6641650N showing intercepts in this release in yellow, the distribution of gold mineralisation in the Rebecca Mineral Resource block model, and Apollo's earlier drill results<sup>2</sup> in white. Grey outline is the 3D optimised pit shell used to constrain reported Mineral Resources.

A further four diamond drill holes were completed for geotechnical and exploration purposes at the Rebecca deposit, and results will be reported once received and compiled.

**Apollo is buoyed by the success of its ongoing drilling along the ~1.7km long Rebecca deposit, where the mineralised system continues to evolve and grow. Infill and step-out drilling has located extensions to mineralisation in expected geological positions, while exploration drilling has located important new near-surface mineralisation. The major Rebecca mineralised structures remain open to depth and will drive continued RC and diamond exploration drilling into 2021. Apollo sees excellent potential to replicate existing mineralisation on continued drilling, particularly at depth.**

The 2021 Rebecca exploration program will include an increased diamond drilling component to allow the Company build geological confidence in under-drilled mineralised areas below the existing 750,000oz Mineral Resource<sup>1</sup>.

### Cleo Discovery

A further seven shallow step-out RC drill holes were drilled at the **Cleo** discovery area, which is located 1.4km to the west of the Rebecca deposit, and 4.5km north of **Duchess** (Figure 1).

Gold mineralisation extends over approximately 1km strike and is hosted by fine grained micro-diorite to amphibolite under shallow transported cover. The discovery of Cleo has opened a new exploration

front at the Project (Figure 1), and new structural targets will be tested during the 2021 exploration drilling program.

This round of step-out drilling expanded the central zone of strong gold anomalism to more than 350m strike and up to 150m wide, with drill holes returning multiple 2m to 11m wide gold intercepts including a best **11m @ 0.90g/t Au** from 126m RCLR0735 (Figure 4).

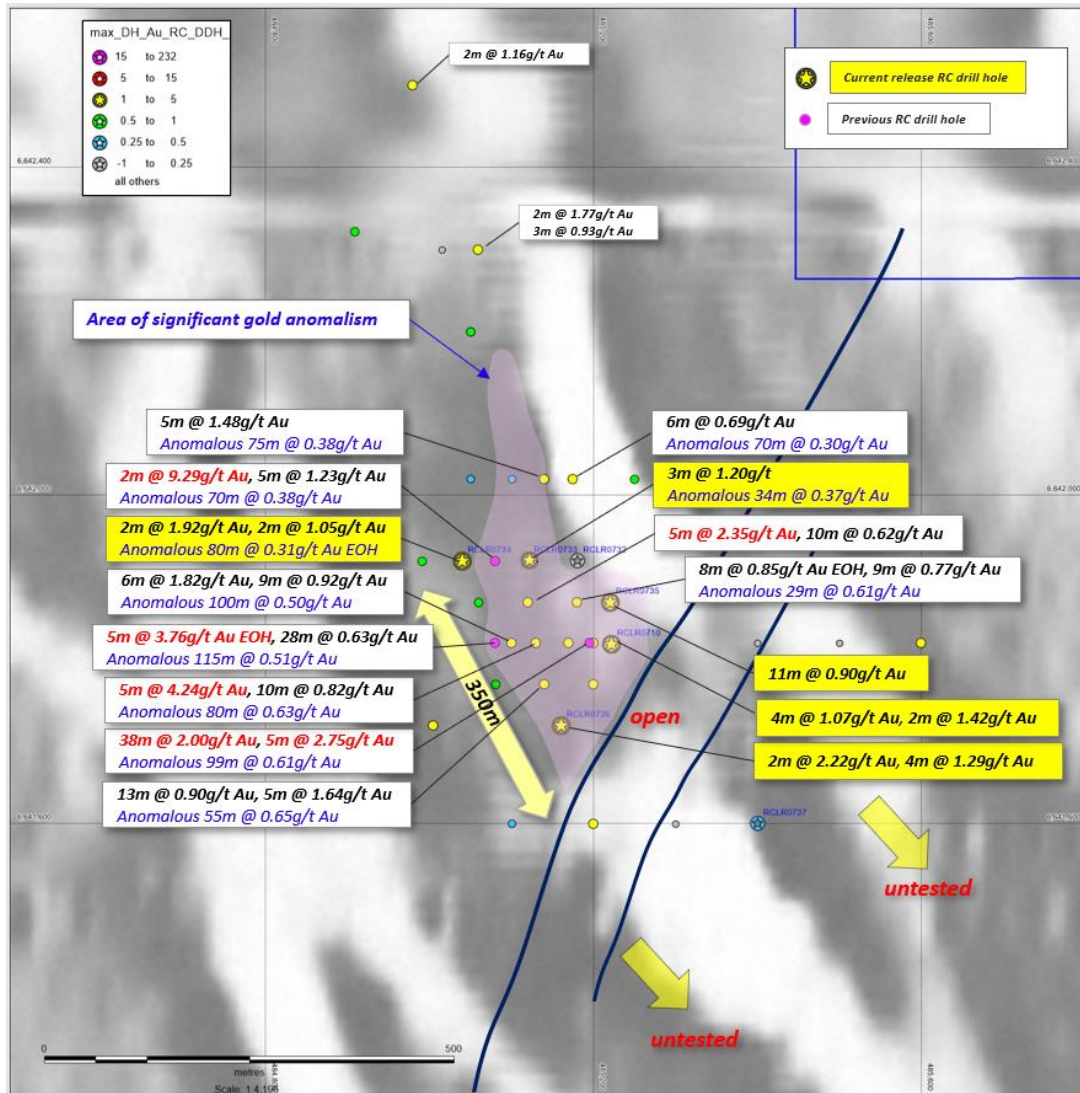


Figure 4. Plan view of all **Cleo** RC drill collars on airborne magnetic image, colour coded for peak downhole intercept. Drillholes reported in this release are shown as stars, with **selected mineralised intercepts labelled in yellow**, and previous intercepts<sup>2</sup> in white boxes.

The central part of the discovery is defined by multiple >0.50g/t Au intercepts within wide ‘anomalous zones’ (calculated at nominal >0.1g/t, and 2g/t Au top cut), with the current drilling results including **80m @ 0.31g/t Au** from 70m in RCLR0734, and **34m @ 0.37g/t Au** from 93m in RCLR0733 (Figure 4).

The Cleo anomalous footprint remains open in most directions, with sparse exploration drill-coverage along strike. While additional drilling and studies are required to understand its commercial significance, the identification of this new gold system during 2020 demonstrates the broader exploration potential of the Project. Further drilling is planned to determine the potential for Mineral Resources.

## Next Steps

The next phases of work at the Lake Rebecca Gold Project are now underway, with an updated Mineral Resource estimation scheduled for completion Q2 2021. The results of this work will guide the Company's 2021 program, both in respect to prioritising infill and exploration drilling, and commercial development options analysis.

Exploration drilling will continue as soon as possible, with multiple high priority 'live' targets in the exploration schedule. This work will be led by further investigation of open high-grade mineralised structures at the Rebecca deposit.

Assay results remain pending for four diamond holes that were completed late 2020 to provide geotechnical information (as well as testing exploration positions) around the margin of the optimised pit shell that constrains the **775,000oz** Rebecca Mineral Resource<sup>1</sup>. Geotechnical test work is in progress, and assay results will continue to be reported as they come to hand.

Apollo has now also flown a detailed photo and topographical surveys as an important step for future technical and project evaluation studies.

The Company remains well funded in an excellent financial position to continue the ongoing exploration and development options analysis work at Lake Rebecca, with \$18.6M in consolidated cash as 11<sup>th</sup> January 2020.

Apollo also continues to retain a valuable royalty interest over the +1Moz Seguella gold project<sup>3</sup> (Roxgold Inc. TSX: ROXG) in central Cote d'Ivoire. For more information on Apollo and its Projects please refer to latest ASX: AOP announcements, and [www.apolloconsolidated.com.au](http://www.apolloconsolidated.com.au)

Authorised for release by Nick Castleden, Managing Director.

-ENDS-

### Further information:

Nick Castleden  
Managing Director  
Apollo Consolidated Limited  
+61 8 6319 1900

Luke Forrestal  
Associate Director  
Media & Capital Partners  
+61 411 479 144

Table 1. Drilling details this release. All reported intercepts are calculated at a 0.50g/t Au lower cut off and allowing for a maximum of 2m internal <0.50g/t Au dilution. Intercepts marked \* include one or more 2-5m composite sample which will now be resampled at 1m intervals. No internal dilution is allowed in composite-only intercepts. 'Anomalous zones' are designed to show width of the gold envelope and comprise intercepts and surrounding anomalism at a nominal >0.1g/t lower cut off, and 2g/t Au top cut.

Hole	Prospect	AMG E	AMG N	Dip	Azimuth	EOH Depth	Intercept	From
RCLR0729	Rebecca	486590	6641385	-75	90	318	4m @ 1.17g/t Au	51
							3m @ 1.26g/t Au	87
							2m @ 2.49g/t Au	142
							2m @ 1.16g/t Au	165
							1m @ 1.44g/t Au	173
							7m @ 1.07g/t Au	193
							<b>21m @ 2.45g/t Au</b>	209
							7m @ 1.24g/t Au	285
RCLR0730	Rebecca precollar	486520	6641335	-66	90	292	3m @ 0.84g/t Au	108
							3m @ 0.61g/t Au	217
							<b>5m @ 3.27g/t Au</b>	230
							<b>11m @ 2.17g/t Au</b>	238
							<b>9m @ 1.79g/t Au</b>	254
							4m @ 2.37g/t Au	267
							2m @ 2.05g/t Au	281
RCLR0731	Rebecca	486530	6641285	-65	90	366	<b>10m @ 2.14g/t Au</b>	250
							<b>7m @ 2.21g/t Au</b>	312
							3m @ 0.84g/t Au	351
RCLR0732	Cleo	485180	6641920	-55	90	138	NSA	
RCLR0733	Cleo	485120	6641920	-55	90	133	3m @ 0.65g/t Au	25
							3m @ 1.20g/t Au	109
							2m @ 0.87g/t Au	117
							2m @ 0.64g/t Au	122
							<i>in anom. 34m @ 0.37g/t Au</i>	93
RCLR0734	Cleo	485040	6641920	-55	90	150	2m @ 1.05g/t Au	100
							3m @ 0.74g/t Au	109
							1m @ 1.92g/t Au	122
							3m @ 0.68g/t Au	145
							<i>in anom. 80m @ 0.31g/t Au EOH</i>	70
RCLR0735	Cleo	485220	6641870	-55	90	138	1m @ 1.84g/t Au	30
							11m @ 0.90g/t Au	126
RCLR0710	Cleo	485222	6641819	-55	90	114	4m @ 1.07g/t Au	34
							2m @ 1.42g/t Au	92
RCLR0736	Cleo	485160	6641720	-55	90	138	4m @ 1.29g/t Au	50
							4m @ 1.22g/t Au	63
							2m @ 2.22g/t Au	110
RCLR0737	Cleo	485400	6641600	-55	90	132	NSA	
RCLR0738	Rebecca	486564	6642000	-55	90	102	4m @ 0.63g/t Au	30
RCLR0739	Rebecca	486480	6642000	-55	90	150	8m @ 1.08g/t Au	79
RCLR0740	Rebecca	486600	6641960	-55	90	72	2m @ 0.68g/t Au	57
RCLR0741	Rebecca	486716	6641650	-55	90	150	<b>22m @ 1.31g/t Au</b>	120
RCLR0742	Rebecca	486666	6641650	-55	90	150	<b>7m @ 1.88g/t Au</b>	44

#### Notes:

**Note 1.** The information on the Lake Rebecca Gold Project JORC (2012) Compliant Mineral Resource is extracted from ASX: AOP 10th February 2020 "+1.0Moz Maiden Mineral Resources Lake Rebecca". Detailed information on the Mineral Resource estimation is available in that document.

Refer to Apollo Consolidated website ([www.apolloconsolidated.com.au](http://www.apolloconsolidated.com.au)) and at the ASX platform. The Company is not aware of any new information or data that materially affects the information in that announcement. Also, Apollo confirms that the material assumptions and technical parameters underpinning the estimates in that announcement continue to apply and have not materially changed. The aggregate resource figure referenced in this announcement is broken down into JORC-compliant resource categories as set out in Table 2. Below:

Indicated				Inferred			Indicated & Inferred		
Deposit	Tonnes	Grade g/t	Ounces	Tonnes	Grade g/t	Ounces	Tonnes	Grade g/t	Ounces
Rebecca	11,700,000	1.5	550,000	7,400,000	0.9	225,000	19,100,000	1.3	775,000
Duchess				5,700,000	1.0	180,000	5,700,000	1.0	180,000
Duke				2,300,000	1.1	80,000	2,300,000	1.1	80,000
<b>Total Indicated &amp; inferred Mineral Resource</b>							<b>27,100,000</b>	<b>1.2</b>	<b>1,035,000</b>

Table 2. Lake Rebecca Gold Project Mineral Resource

**Note 2.** For details of past Rebecca Project drilling and results please refer to ASX: AOP releases: 26 August 2012, 28 September 2012, 8 October 2015, 1 September 2016, 9, 13, 20 & 24 October 2017, 15 January 2018, 12th April 2018, 7 May 2018, 17<sup>th</sup> July 2018, 13<sup>th</sup> & 30<sup>th</sup> August 2018, 21<sup>st</sup> September 2018, 15<sup>th</sup> October 2018, 17<sup>th</sup> December 2018, 15<sup>th</sup> March 2019, 21<sup>st</sup> May 2019, 12<sup>th</sup>, 18<sup>th</sup> & 27<sup>th</sup> June 2019, 5<sup>th</sup> August 2019, 3<sup>rd</sup> September 2019, 1<sup>st</sup> October 2019, 4<sup>th</sup> November 2019, 3<sup>rd</sup> December 2019, 6<sup>th</sup> January 2020, 15<sup>th</sup> March 2020, 16<sup>th</sup> April 2020 13<sup>th</sup> May 2020, 29<sup>th</sup> May 2020, 24<sup>th</sup> June 2020, 8<sup>th</sup> July 2020, 4<sup>th</sup> August 2020, 24<sup>th</sup> September 2020, 3<sup>rd</sup> November 2020 and 7<sup>th</sup> December 2020.

**Note 3.** Refer to TSX: ROXG 14<sup>th</sup> April 2020 and prior releases.

The information in this release that relates to Exploration Results as those terms are defined in the 2012 Edition of the "Australasian Code for Reporting of Exploration Results, Mineral Resources and Ore Reserve", is based on information compiled by Mr. Nick Castleden, who is a director of the Company and a Member of the Australian Institute of Geoscientists. Mr. Castleden has sufficient experience which is relevant to the style of mineralisation and type of deposit under consideration and to the activity which they are undertaking to qualify as a Competent Person as defined in the 2012 Edition of the "Australasian Code for Reporting of Exploration Results, Mineral Resources and Ore Reserve". Mr. Castleden consents to the inclusion of the matters based on his information in the form and context in which it appears.

Exploration results by previous explorers referring to the Rebecca Projects are prepared and disclosed by Apollo Consolidated Limited in accordance with JORC Code 2004. The Company confirms that it is not aware of any new information or data that materially affects the information included in this market announcement. The exploration results prepared and disclosed under the JORC 2004 have not been updated since to comply with the JORC Code 2012 on the basis that the information has not materially changed since it was last reported.



## APPENDIX 1 JORC Code, 2012 Edition – Table 1

### Section 1 Sampling Techniques and Data

(Criteria in this section apply to all succeeding sections.)

Criteria	JORC Code explanation	Commentary
<i>Sampling techniques</i>	<ul style="list-style-type: none"> <li><i>Nature and quality of sampling (eg cut channels, random chips, or specific specialised industry standard measurement tools appropriate to the minerals under investigation, such as down hole gamma sondes, or handheld XRF instruments, etc). These examples should not be taken as limiting the broad meaning of sampling.</i></li> <li><i>Include reference to measures taken to ensure sample representivity and the appropriate calibration of any measurement tools or systems used.</i></li> <li><i>Aspects of the determination of mineralisation that are Material to the Public Report.</i></li> <li><i>In cases where 'industry standard' work has been done this would be relatively simple (eg 'reverse circulation drilling was used to obtain 1 m samples from which 3 kg was pulverised to produce a 30 g charge for fire assay'). In other cases more explanation may be required, such as where there is coarse gold that has inherent sampling problems. Unusual commodities or mineralisation types (eg submarine nodules) may warrant disclosure of detailed information.</i></li> </ul>	<ul style="list-style-type: none"> <li>Each drill hole location was collected with a hand-held GPS unit with ~3m tolerance.</li> <li>Geological logging was completed on all core ahead of selection of intervals for cutting and analysis. Logging codes are consistent with past RC drilling</li> <li>Reverse circulation drilling (RC), angled drill holes from surface</li> <li>Mostly 1m samples of 2-3kg in weight</li> <li>Industry-standard diameter reverse circulation drilling rods and conventional face-sampling RC hammer bit</li> <li>One metre samples collected from the cyclone and passed through a cone-splitter to collect a 2-3kg split, bulk remainder collected in plastic RC sample bags and placed in 20m lines on site</li> <li>Composite samples are compiled by obliquely spearing through 2-5 x 1m samples, to make a 2-3kg sample</li> <li>Wet samples are spear-sampled obliquely through bulk 1m sample to collect a representative 2-3kg sample; lab sample is dried on site if any moisture in sample.</li> <li>Wet samples are rare.</li> <li>HQ or NQ2 sized diamond core collected from angled drill holes</li> <li>Core was drilled starting from the final depth of earlier RC pre-collars</li> <li>Certified Reference Standards inserted every ~40samples, duplicate sample of a split 1m interval, collected at 1 x per RC drill hole</li> <li>All samples were analysed by 50g Fire Assay technique which is an appropriate technique for this style of mineralisation and reported at a 0.01ppm threshold</li> </ul>
<i>Drilling techniques</i>	<ul style="list-style-type: none"> <li><i>Drill type (eg core, reverse circulation, open-hole hammer, rotary air blast, auger, Bangka, sonic, etc) and details (eg core diameter, triple or standard tube, depth of diamond tails, face-sampling bit or other type, whether core is oriented and if so, by what method,</i></li> </ul>	<ul style="list-style-type: none"> <li>RC rig supplied by Raglan Drilling of Kalgoorlie</li> <li>Diamond rig supplied by Westralian Diamond Drilling of Kalgoorlie</li> <li>Triple tube HQ core from surface then standard tube NQ2 oriented core collected in fresh rock</li> <li>Reverse Circulation drilling, 6m long, 4.5-inch rods &amp; face-sampling hammer</li> </ul>

Criteria	JORC Code explanation	Commentary
	etc).	
<i>Drill sample recovery</i>	<ul style="list-style-type: none"> <li>• <i>Method of recording and assessing core and chip sample recoveries and results assessed.</i></li> <li>• <i>Measures taken to maximise sample recovery and ensure representative nature of the samples.</i></li> <li>• <i>Whether a relationship exists between sample recovery and grade and whether sample bias may have occurred due to preferential loss/gain of fine/coarse material.</i></li> </ul>	<ul style="list-style-type: none"> <li>• Core was measured, and any core loss recorded. Very high-quality core was obtained, with close to 100% recovery</li> <li>• RC samples sieved and logged at 1m intervals by supervising geologist, sample quality, moisture and any contamination also logged.</li> <li>• &gt;95% of RC samples were dry and of good quality</li> <li>• RC Booster and auxiliary air pack used to control groundwater inflow</li> <li>• Sample recovery optimized by hammer pull back and air blow-through at the end of each metre.</li> <li>• Where composite samples are taken, the sample spear is inserted diagonally through the bulk sample bag from top to bottom to ensure a full cross-section of the sample is collected.</li> <li>• To minimize contamination and ensure an even split, the cone splitter is cleaned with compressed air at the end of each rod, and the cyclone is cleaned every 50m and at the end of hole, and more often when wet samples are encountered</li> <li>• RC holes where groundwater cannot be controlled are abandoned, and later extended where necessary via NQ diamond 'tails'</li> <li>• &gt;95% of all drill samples in fresh rock profile were dry</li> <li>• Sample quality and recovery was generally good using the techniques above, no material bias is expected in high-recovery samples obtained</li> </ul>
<i>Logging</i>	<ul style="list-style-type: none"> <li>• <i>Whether core and chip samples have been geologically and geotechnically logged to a level of detail to support appropriate Mineral Resource estimation, mining studies and metallurgical studies.</i></li> <li>• <i>Whether logging is qualitative or quantitative in nature. Core (or costean, channel, etc) photography.</i></li> <li>• <i>The total length and percentage of the relevant intersections logged.</i></li> </ul>	<ul style="list-style-type: none"> <li>• Recording of rock type, oxidation, veining, alteration and sample quality carried out for all core collected</li> <li>• Logging is mostly qualitative</li> <li>• Each entire drill hole was logged</li> <li>• While drill core samples are being geologically logged, they will not be at a level of detail to support appropriate Mineral Resource estimation, mining studies and metallurgical studies.</li> <li>• RC samples representing the lithology of each 2m section of the drill hole were collected and stored into chip trays for future geological reference</li> <li>• All core trays and RC chip trays are photographed for future geological reference</li> </ul>
<i>Sub-sampling techniques and sample preparation</i>	<ul style="list-style-type: none"> <li>• <i>If core, whether cut or sawn and whether quarter, half or all core taken.</i></li> <li>• <i>If non-core, whether riffled, tube sampled, rotary split, etc and whether sampled wet or dry.</i></li> <li>• <i>For all sample types, the nature, quality and appropriateness of the sample preparation technique.</i></li> <li>• <i>Quality control procedures</i></li> </ul>	<ul style="list-style-type: none"> <li>• RC composite sampling was carried out where site geologist decided material was less likely to be mineralised. In these intervals samples were spear-sampled directly from the split bulk sample, to make up a 2-3kg 2-5m composite sample</li> <li>• Where composite samples are taken, the sample spear is inserted diagonally through the bulk sample bag from top to bottom to ensure a full cross-section of the sample is collected. This technique is considered an industry standard and effective assay cost-control measure</li> </ul>

Criteria	JORC Code explanation	Commentary
	<p><i>adopted for all sub-sampling stages to maximise representivity of samples.</i></p> <ul style="list-style-type: none"> <li>Measures taken to ensure that the sampling is representative of the in situ material collected, including for instance results for field duplicate/second-half sampling.</li> <li>Whether sample sizes are appropriate to the grain size of the material being sampled.</li> </ul>	<ul style="list-style-type: none"> <li>Bulk bags for each metre are stored for future assay if required.</li> <li>All samples were dry and representative of drilled material</li> <li>Certified Reference Standards inserted every ~40 samples, 1 x duplicate sample submitted per drillhole</li> <li>Sample sizes in the 2-3kg range are considered sufficient to accurately represent the gold content in the drilled metre at this project</li> <li>Diamond core is cut in half lengthways and half-core lengths up to 1.5m in length were submitted for assay</li> <li>Remaining half core is retained in core trays for future study</li> </ul>
Quality of assay data and laboratory tests	<ul style="list-style-type: none"> <li>The nature, quality and appropriateness of the assaying and laboratory procedures used and whether the technique is considered partial or total.</li> <li>For geophysical tools, spectrometers, handheld XRF instruments, etc, the parameters used in determining the analysis including instrument make and model, reading times, calibrations factors applied and their derivation, etc.</li> <li>Nature of quality control procedures adopted (eg standards, blanks, duplicates, external laboratory checks) and whether acceptable levels of accuracy (ie lack of bias) and precision have been established.</li> </ul>	<ul style="list-style-type: none"> <li>Core samples are collected from the Project area by staff, and delivered to Genalysis Kalgoorlie (WA) where they are cut, and assay samples crushed to -2mm, subset, riffle split and pulverised to -75um before being sent to Genalysis Perth for 50g charge assayed by fire assay with AAS finish</li> <li>RC chip samples were collected from the Project area by staff, and delivered to SGS Kalgoorlie (WA) where they were crushed to -2mm, subset, riffle split and pulverised to -75um before being assayed for 50g charge assayed by fire assay with AAS finish, Lab code FA505.</li> <li>Quality control procedures adopted consist in the insertion of laboratory standards approx every 40m and one duplicate sample per hole and also internal Genalysis/SGS laboratory checks. The results demonstrated an acceptable level of accuracy and precision</li> <li>Company standard results show acceptable correlation with expected grades of standards</li> <li>A good correlation was observed between visible gold logged and/or percentage of sulphide and gold grades</li> </ul>
Verification of sampling and assaying	<ul style="list-style-type: none"> <li>The verification of significant intersections by either independent or alternative company personnel.</li> <li>The use of twinned holes.</li> <li>Documentation of primary data, data entry procedures, data verification, data storage (physical and electronic) protocols.</li> </ul>	<ul style="list-style-type: none"> <li>The sample register is checked in the field while sampling is ongoing and double checked while entering the data on the computer.</li> <li>The sample register is used to process raw results from the lab and the processed results are then validated by software (.xls, MapInfo/Discover).</li> <li>A hardcopy of each file is stored, and an electronic copy saved in two separate hard disk drives</li> <li>The project is at exploration and resource stage, at Mining Study stage twinned holes will be drilled as appropriate.</li> </ul>

Criteria	JORC Code explanation	Commentary
	<ul style="list-style-type: none"> <li>Discuss any adjustment to assay data.</li> </ul>	
Location of data points	<ul style="list-style-type: none"> <li>Accuracy and quality of surveys used to locate drill holes (collar and down-hole surveys), trenches, mine workings and other locations used in Mineral Resource estimation.</li> <li>Specification of the grid system used.</li> <li>Quality and adequacy of topographic control.</li> </ul>	<ul style="list-style-type: none"> <li>Collar located using a Garmin GPS with an accuracy ~3m</li> <li>Data are recorded in AMG 1984, Zone 51 projection.</li> <li>Topographic control using the same GPS with an accuracy &lt;10m</li> <li>Drillhole details supplied in body of announcement</li> </ul>
Data spacing and distribution	<ul style="list-style-type: none"> <li>Data spacing for reporting of Exploration Results.</li> <li>Whether the data spacing and distribution is sufficient to establish the degree of geological and grade continuity appropriate for the Mineral Resource and Ore Reserve estimation procedure(s) and classifications applied.</li> <li>Whether sample compositing has been applied.</li> </ul>	<ul style="list-style-type: none"> <li>Diamond drillholes were completed on lines 25-50m apart to test below existing mineralised RC or diamond intercepts, with intercept spacing on structures &gt;80m apart.</li> <li>Detailed RC drilling is completed at 25m &amp; 50m line spacing to infill and extend interpreted mineralisation</li> <li>Exploration RC drilling may be carried out on lines up to 1.2km apart and infilled to 400m then 200m lines.</li> <li>The drill program was designed to follow-up existing nearby mineralisation and the spacing of the program is considered suitable to provide bedrock information and geometry of the lode structures targeted. Further infill drilling may be required to establish continuity and grade variation around the holes</li> <li>Assays are reported as 1m samples, unless otherwise indicated in tables in the attaching text</li> </ul>
Orientation of data in relation to geological structure	<ul style="list-style-type: none"> <li>Whether the orientation of sampling achieves unbiased sampling of possible structures and the extent to which this is known, considering the deposit type.</li> <li>If the relationship between the drilling orientation and the orientation of key mineralised structures is considered to have introduced a sampling bias, this should be assessed and reported if material.</li> </ul>	<ul style="list-style-type: none"> <li>Drillholes were oriented along AMGZ51 east-west unless shown in Table 1.</li> <li>Drill sections intend to cut geology close to right-angles of interpreted strikes. Completed drillholes intersected target mineralisation in the expected down-hole positions.</li> <li>Rock contacts and fabrics at Cleo and Duke are interpreted to be close to vertical. Duchess and Rebecca structures mostly dip west at close to right angles to the drill hole. Mineralised intervals reported vary from almost 100% true width to ~40% true width, depending on local changes in the orientation of mineralised lodges</li> </ul>
Sample security	<ul style="list-style-type: none"> <li>The measures taken to ensure sample security.</li> </ul>	<ul style="list-style-type: none"> <li>RC samples collected on the field brought back to the company camp area, bagged and sealed into 20kg polyweave bags</li> <li>Diamond core was processed at a secure cutting site in Kalgoorlie bagged and sealed into 20kg polyweave bags and delivered to the laboratory at the end of each day.</li> <li>All samples are delivered directly from site to the laboratory by company representatives and remain under laboratory control to the delivery of results</li> </ul>
Audits or reviews	<ul style="list-style-type: none"> <li>The results of any audits or reviews of sampling</li> </ul>	<ul style="list-style-type: none"> <li>No external audit or review completed</li> </ul>

Criteria	JORC Code explanation	Commentary
	<i>techniques and data.</i>	

## Section 2 Reporting of Exploration Results

(Criteria listed in the preceding section also apply to this section.)

Criteria	JORC Code explanation	Commentary
<i>Mineral tenement and land tenure status</i>	<ul style="list-style-type: none"> <li>• <i>Type, reference name/number, location and ownership including agreements or material issues with third parties such as joint ventures, partnerships, overriding royalties, native title interests, historical sites, wilderness or national park and environmental settings.</i></li> <li>• <i>The security of the tenure held at the time of reporting along with any known impediments to obtaining a licence to operate in the area.</i></li> </ul>	<ul style="list-style-type: none"> <li>• Rebecca is a collection of granted exploration licences located 150km east of Kalgoorlie. The Company owns 100% of the tenements.</li> <li>• All deposits lie on E28/1610</li> <li>• A 1.5% NSR over E28/1610 is owned by TRR Services Australia Pty a subsidiary of UK based AIM listed Trident Royalties Plc.</li> <li>• There are no impediments to exploration on the property</li> <li>• Tenure is in good standing and has more than 3 years to expiry</li> </ul>
<i>Exploration done by other parties</i>	<ul style="list-style-type: none"> <li>• <i>Acknowledgment and appraisal of exploration by other parties.</i></li> </ul>	<ul style="list-style-type: none"> <li>• Previous exploration was carried out on a similar permit area by Placer Ltd, Aberfoyle Ltd, and Newcrest Ltd during the early to late 1990's. Aberfoyle carried out systematic RAB and aircore drilling on oblique and east-west drill lines, and progressed to RC and diamond drilling over mineralised bedrock at the Duchess (Redskin) and Duke prospects. Minor RC drilling was carried out at Rebecca (Bombora).</li> <li>• No resource calculations had been carried out in the past but there was sufficient drilling to demonstrate the prospects have considerable zones of gold anomalism associated with disseminated sulphides.</li> <li>• Regional mapping and airborne geophysical surveys were completed at the time, and parts of the tenement were IP surveyed.</li> <li>• The project has a good digital database of previous drilling, and all past work is captured to GIS.</li> <li>• The quality of the earlier work appears to be good.</li> </ul>
<i>Geology</i>	<ul style="list-style-type: none"> <li>• <i>Deposit type, geological setting and style of mineralisation.</i></li> </ul>	<ul style="list-style-type: none"> <li>• Dominantly granite and gneiss with minor zones of amphibolite and metamorphosed ultramafic rocks.</li> <li>• Mineralisation is associated with zones of disseminated pyrite and pyrrhotite associated with increased deformation and silicification. There is a positive relationship between sulphide and gold and limited relationship between quartz veining and gold.</li> </ul>
<i>Drill hole Information</i>	<ul style="list-style-type: none"> <li>• <i>A summary of all information material to the understanding of the exploration results including a tabulation of the following information for all Material drill holes:</i> <ul style="list-style-type: none"> <li>○ <i>easting and northing of the drill hole collar</i></li> <li>○ <i>elevation or RL (Reduced Level – elevation above sea level in metres) of the drill hole collar</i></li> </ul> </li> </ul>	<ul style="list-style-type: none"> <li>• Refer to Table in body of announcement</li> </ul>

Criteria	JORC Code explanation	Commentary
	<ul style="list-style-type: none"> <li>○ <i>dip and azimuth of the hole</i></li> <li>○ <i>down hole length and interception depth</i></li> <li>○ <i>hole length.</i></li> <li>● <i>If the exclusion of this information is justified on the basis that the information is not Material and this exclusion does not detract from the understanding of the report, the Competent Person should clearly explain why this is the case.</i></li> </ul>	
<i>Data aggregation methods</i>	<ul style="list-style-type: none"> <li>● <i>In reporting Exploration Results, weighting averaging techniques, maximum and/or minimum grade truncations (eg cutting of high grades) and cut-off grades are usually Material and should be stated.</i></li> <li>● <i>Where aggregate intercepts incorporate short lengths of high grade results and longer lengths of low grade results, the procedure used for such aggregation should be stated and some typical examples of such aggregations should be shown in detail.</i></li> <li>● <i>The assumptions used for any reporting of metal equivalent values should be clearly stated.</i></li> </ul>	<ul style="list-style-type: none"> <li>● No grade cuts applied</li> <li>● Reported mineralised drill hole intercepts are reported as length-weighted averages, where &gt;1m width, at a 0.50g/t cut-off, and more than 1g/t Au in sum of gold in intercept. Reported intercepts allow a maximum 2m contiguous internal dilution.</li> <li>● ‘Anomalous’ intercepts are reported at 0.10g/t Au cut off and calculated using a maximum 2m contiguous internal dilution.</li> <li>● Anomalous intercepts reported may include results also reported at a 0.50g/t cut-off, are only provided to demonstrate particularly wide mineralised zones.</li> </ul>
<i>Relationship between mineralisation widths and intercept lengths</i>	<ul style="list-style-type: none"> <li>● <i>These relationships are particularly important in the reporting of Exploration Results.</i></li> <li>● <i>If the geometry of the mineralisation with respect to the drill hole angle is known, its nature should be reported.</i></li> <li>● <i>If it is not known and only the down hole lengths are reported, there should be a clear statement to this effect (eg ‘down hole length, true width not known’).</i></li> </ul>	<ul style="list-style-type: none"> <li>● Lithologies and fabrics are interpreted to be close to right angles to the drill holes, dipping at 40-50 degrees west.</li> <li>● The arrangement of main sulphide structures is interpreted to change along strike, and down-dip such that reported mineralised intervals can vary from almost 100% true width to ~40% true width, depending on local changes in the orientation of mineralised lodes</li> <li>● Plunge of mineralisation is considered to be shallowly southwest; and/or steeper to the northwest, additional structural mapping is required to confirm this</li> </ul>
<i>Diagrams</i>	<ul style="list-style-type: none"> <li>● <i>Appropriate maps and sections (with scales) and tabulations of intercepts should be included for any significant discovery being reported These should include, but not be limited to a plan view of drill hole collar locations and appropriate sectional views.</i></li> </ul>	<ul style="list-style-type: none"> <li>● Appropriate diagrams are in body of this report</li> </ul>

Criteria	JORC Code explanation	Commentary
<i>Balanced reporting</i>	<ul style="list-style-type: none"> <li>Where comprehensive reporting of all Exploration Results is not practicable, representative reporting of both low and high grades and/or widths should be practiced to avoid misleading reporting of Exploration Results.</li> </ul>	<ul style="list-style-type: none"> <li>Refer to Table showing all down-hole mineralised intercepts &gt;0.50g/t Au in the current drill program</li> </ul>
<i>Other substantive exploration data</i>	<ul style="list-style-type: none"> <li>Other exploration data, if meaningful and material, should be reported including (but not limited to): geological observations; geophysical survey results; geochemical survey results; bulk samples – size and method of treatment; metallurgical test results; bulk density, groundwater, geotechnical and rock characteristics; potential deleterious or contaminating substances.</li> </ul>	<ul style="list-style-type: none"> <li>Preliminary bottle-roll metallurgical test-work reported 5<sup>th</sup> Jan 2018 showed an average 94.5% gold recovery in 5 composite samples of fresh mineralised sulphidic material in diamond core.</li> <li>Second stage testing reported 5<sup>th</sup> April 2019 on 6 composite fresh-rock mineralised RC intercepts returned an average 93% gold recovery.</li> </ul>
<i>Further work</i>	<ul style="list-style-type: none"> <li>The nature and scale of planned further work (eg tests for lateral extensions or depth extensions or large-scale step-out drilling).</li> <li>Diagrams clearly highlighting the areas of possible extensions, including the main geological interpretations and future drilling areas, provided this information is not commercially sensitive.</li> </ul>	<ul style="list-style-type: none"> <li>These results are part of an ongoing exploration and Mineral Resources extension drilling, and additional results are expected regularly over coming months.</li> <li>Next stage of exploration work will consist of follow-up RC pre-collars and diamond drilling to continue to scope lateral and plunge extensions of structures and to test new targets</li> <li>Additional surface geophysical surveys may be commissioned</li> <li>A re-estimation of contained Mineral Resources will be carried out in due course</li> </ul>