



12 February 2021

ACQUISITION OF EXPLORATION LICENCE E38/3438 COMPLETES

Brightstar Resources Limited (**Brightstar** or the **Company**) is pleased to announce completion of the tenement acquisition agreement (**TSA**) in respect of the acquisition of exploration licence E38/3438 in Western Australia, (**Tenement**) from Mining Equities Pty Ltd (**Mining Equities**), as announced to ASX on Monday, 8 February 2021 (**TSA Announcement**).

SHARE AND OPTION ISSUE TO MINING EQUITIES COMPLETED

As announced in the TSA Announcement, Mining Equities was today issued:

1. 4,000,000 Brightstar shares; and
2. 1,000,000 unlisted options over ordinary Brightstar shares with a three-year term from issue and an exercise price of 10 cents.

Mining Equities is also granted rights to receive a 1% NSR in respect of minerals produced from the Tenement.

OVERVIEW OF THE TENEMENT

The Tenement is dominated by a northeast striking, steeply dipping contact between komatiitic talc sheared ultramafic unit to the west and basalts and coarser basaltic facies of quartz dolerites to the east (refer to *Figure 2 - Magnetics*).

Fine grained felsic porphyry dykes are common in the area also trending about 030° and generally confined to the intruding mafic rocks.

COMPANY DIRECTORS AND MANAGEMENT

William Hobba
Managing Director

Yongji Duan
Chairman

Josh Hunt
Non-Executive Director

Luke Wang
**Financial Controller
Joint Company Secretary**

Tony Lau
Joint Company Secretary

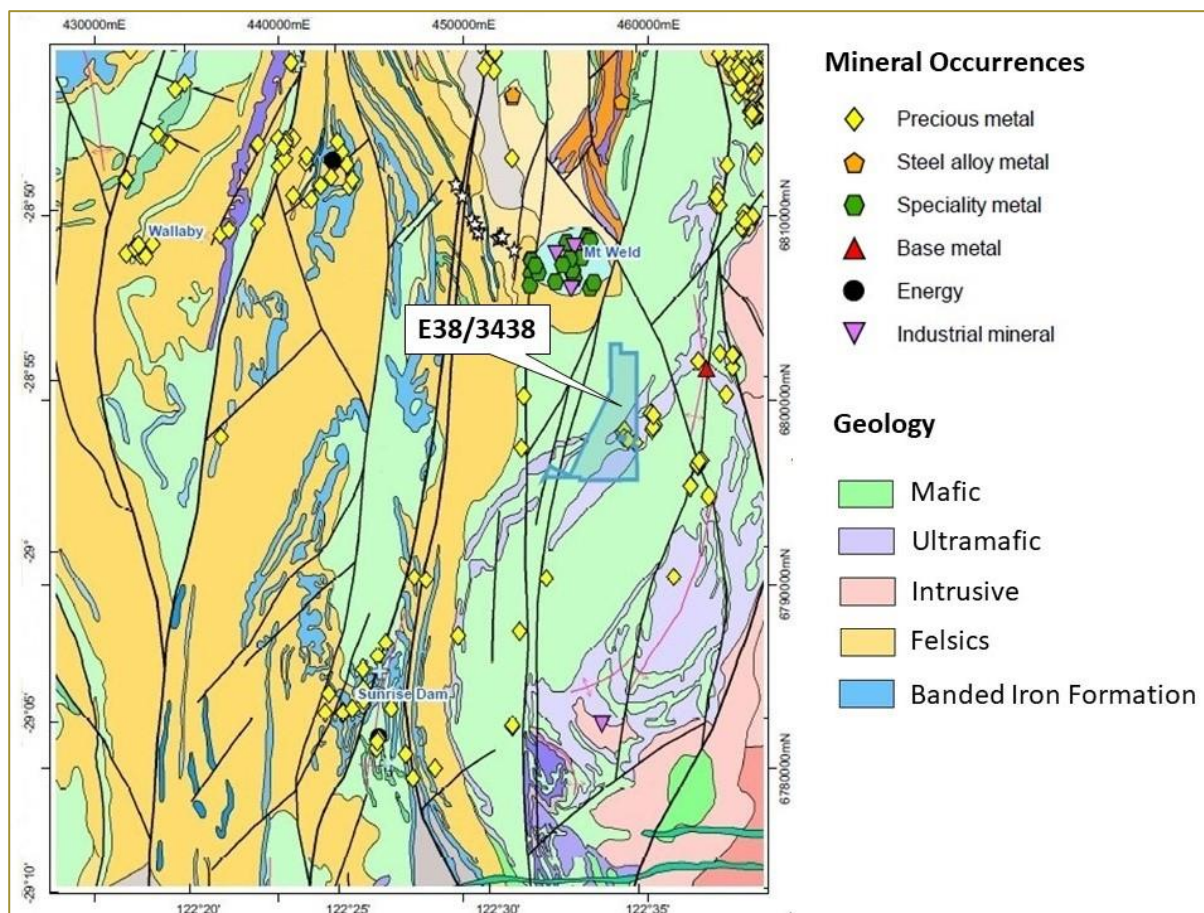


Figure 1 – Regional Geology Showing Location of surrounding Mines

Evidence from historical workings and historical drilling indicate shallowly dipping, massive thin quartz veins hosted by possibly fault controlled, sub horizontal, weathered, strongly foliated mafic and metasediment chlorite schists. It is these veins and adjacent strongly preferentially weathered shear/fault zones that appear to be the main target of historical workings.

Historical exploration has been conducted across the project area including geological mapping, airborne geophysical surveys, geochemistry and drilling.

Previous exploration programs were conducted by Acacia Resources during the mid-1990's through the Keringal East Joint Venture. Anomalous nickel mineralisation has also been delineated through geochemical sampling.

The Tenement is located in close proximity to major gold mines such as Sunrise Dam and Wallaby. Brightstar is collating data from historical reports and will plan future exploration programs once this is completed.

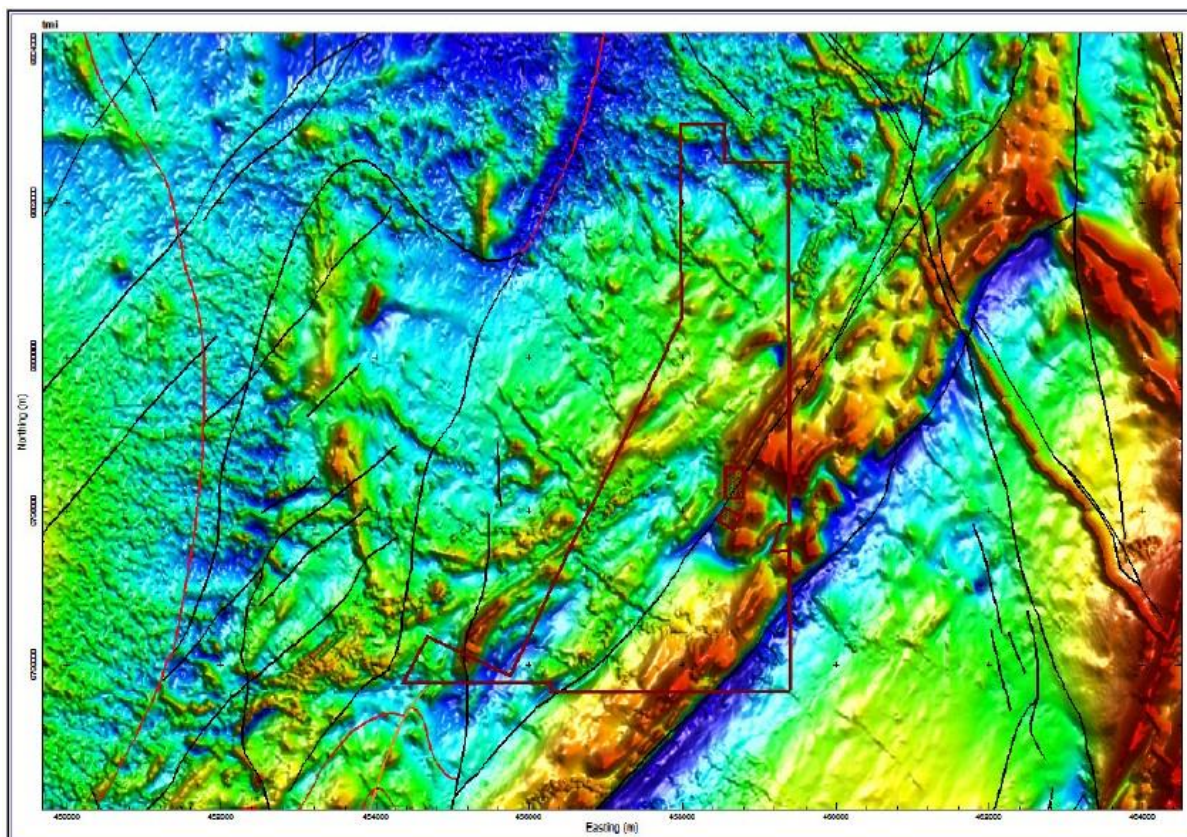


Figure 2 – Regional Magnetics

This ASX announcement has been approved by the board of Brightstar.

For further information, please contact:

William Hobba

Managing Director

Phone: +61 8 9277 6008

Email: miningservicesA1@bigpond.com

CAUTIONARY NOTE REGARDING FORWARD-LOOKING INFORMATION

This Announcement contains forward-looking statements and forward-looking information within the meaning of applicable Australian securities laws, which are based on expectations, estimates and projections as of the date of this Announcement.

This forward-looking information includes, or may be based upon, without limitation, estimates, forecasts and statements as to management's expectations with respect to, among other things, the timing and amount of funding required to execute the Company's exploration, development and business plans, capital and exploration expenditures, the effect on the Company of any changes to existing legislation or policy, government regulation of mining operations, the length of time required to obtain permits, certifications and approvals, the success of exploration, development and mining activities, the geology of the Company's properties, environmental risks, the availability of labour, the focus of the Company in the future, demand and market outlook for precious metals and the prices thereof, progress in development of mineral properties, the Company's ability to

raise funding privately or on a public market in the future, the Company's future growth, results of operations, performance, and business prospects and opportunities. Wherever possible, words such as "anticipate", "believe", "expect", "intend", "may" and similar expressions have been used to identify such forward-looking information.

Forward-looking information is based on the opinions and estimates of management at the date the information is given, and on information available to management at such time. Forward looking information involves significant risks, uncertainties, assumptions and other factors that could cause actual results, performance or achievements to differ materially from the results discussed or implied in the forward-looking information. These factors, including, but not limited to, fluctuations in currency markets, fluctuations in commodity prices, the ability of the Company to access sufficient capital on favourable terms or at all, changes in national and local government legislation, taxation, controls, regulations, political or economic developments in Indonesia and Australia or other countries in which the Company does business or may carry on business in the future, operational or technical difficulties in connection with exploration or development activities, employee relations, the speculative nature of mineral exploration and development, obtaining necessary licenses and permits, diminishing quantities and grades of mineral reserves, contests over title to properties, especially title to undeveloped properties, the inherent risks involved in the exploration and development of mineral properties, the uncertainties involved in interpreting drill results and other geological data, environmental hazards, industrial accidents, unusual or unexpected formations, pressures, cave-ins and flooding, limitations of insurance coverage and the possibility of project cost overruns or unanticipated costs and expenses, and should be considered carefully. Many of these uncertainties and contingencies can affect the Company's actual results and could cause actual results to differ materially from those expressed or implied in any forward-looking statements made by, or on behalf of, the Company. Prospective investors should not place undue reliance on any forward-looking information.

Although the forward-looking information contained in this Announcement is based upon what management believes, or believed at the time, to be reasonable assumptions, the Company cannot assure prospective purchasers that actual results will be consistent with such forward-looking information, as there may be other factors that cause results not to be as anticipated, estimated or intended, and neither the Company nor any other person assumes responsibility for the accuracy and completeness of any such forward-looking information. The Company does not undertake, and assumes no obligation, to update or revise any such forward-looking statements or forward-looking information contained herein to reflect new events or circumstances, except as may be required by law.

No stock exchange, regulation services provider, securities commission or other regulatory authority has approved or disapproved the information contained in this Announcement.