



NEWLY MINTED Gold, Nickel and Base Metal OPPORTUNITY IN WESTERN AUSTRALIA

Corporate Presentation
February 2021

DISCLAIMER

This presentation is not a prospectus nor an offer of securities for subscription or sale in any jurisdiction nor a securities recommendation. The information in this presentation is an overview and does not contain all information necessary for investment decisions. In making investment decisions, investors should rely on their own examination of BPM Minerals Limited (Company) and consult with their own legal, tax, business and/or financial advisers in connection with any acquisition of securities or interest in the Santy, Nepean and Claw Projects. The information contained in this presentation has been prepared in good faith by the Company. However, no representation or warranty, express or implied, is made as to the completeness or adequacy of any statements, estimates, opinions or other information contained in this presentation. To the maximum extent permitted by law, the Company, its directors, officers, employees and agents disclaim liability for any loss or damage which may be suffered by any person through the use of, or reliance on, anything contained in or omitted from this presentation. Certain information in this presentation refers to the intentions of the Company, but these are not intended to be forecasts, forward looking statements, or statements about future matters for the purposes of the Corporations Act 2001 (Cth) or any other applicable law. The occurrence of events in the future are subject to risks, uncertainties and other factors that may the Company's actual results, performance or achievements to differ from those referred to in this presentation to occur as contemplated. The presentation contains only a synopsis of more detailed information available in relation to the matters described in this document and accordingly no reliance may be placed for any purpose whatsoever on the sufficiency or completeness of such information and to do so could potentially expose you to a significant risk of losing any of the property invested by you or incurring by you of additional liability. Recipients of this presentation should conduct their own investigation, evaluation and analysis of the business, data and property described in this presentation. In particular, any estimates or projections or opinions contained herein necessarily involve significant elements of subjective judgment, analysis and assumptions and you should satisfy yourself in relation to such matters.

COMPETENT PERSON STATEMENT

The information in this report that relates to exploration results and exploration targets is based on and fairly represents information compiled by Mr Greg Smith, a Competent Person whom is a Member of the Australasian Institute of Mining and Metallurgy. Mr Smith, a non-executive director of the Company holds securities in the Company. Mr Smith has sufficient experience that is relevant to the style of mineralisation and type of deposit under consideration and to the activity being undertaken to qualify as a Competent Person as defined in the 2012 Edition of the 'Australasian Code for Reporting of Exploration Results, Mineral Resources and Ore Reserves'. Mr Smith consents to the inclusion in the report of the matters based on his information in the form and context in which it appears.

All parties have consented to the inclusion of their work for the purposes of this presentation. The interpretations and conclusions reached in this presentation are based on current geological theory and the best evidence available to the author at the time of writing. It is the nature of all scientific conclusions that they are founded on an assessment of probabilities and, however high these probabilities might be, they make no claim for absolute certainty. Any economic decisions which might be taken on the basis of interpretations or conclusions contained in this presentation will therefore carry an element of risk.



EXCITING OPPORTUNITY IN WESTERN AUSTRALIAN Au, Ni & Base Metal COUNTRY

BPM Minerals has acquired three projects covering 405km²

NEPEAN PROJECT

7,000m of AC drilling underway

Majority of regolith covered prospective geology untested.

Limited historical drilling returned significant gold & nickel intercepts:

- **4.6m @ 1.0 g/t Au from 25.9m to EOH¹**
- **9.2m @ 4,083 ppm Ni from 39.6m to EOH¹**

SANTY PROJECT

Permitting and mapping underway

Two nearby gold deposits:

- Mixy Deposit: **65,000 oz Au 4.3g/t gold²**
- A-Zone: **63,000 oz Au at 2.1g/t gold²**

Underexplored with 80% regolith cover and very limited drilling

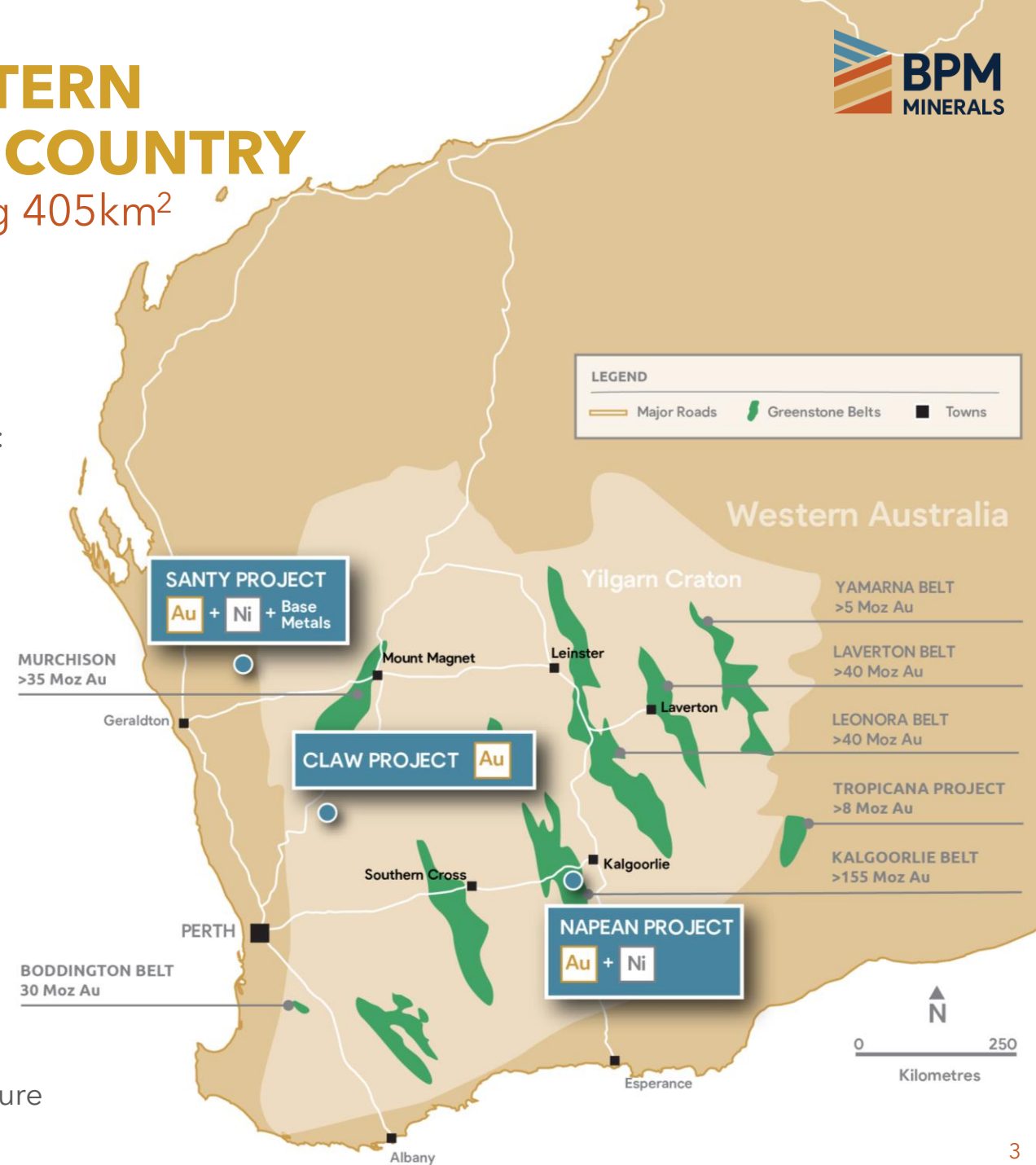
Rock-chip sampling returned a peak value of **100.6 g/t gold.**

Highly anomalous **Cu/Zn and Ni/Cu** from Fe drilling.

CLAW PROJECT

Mt Gibson Shear Zone – Greenfields potential

Untested regolith covered portion of the Youanmi greenstone belt (+2Moz). Southern extension of 1.7Moz Mt Gibson Gold Mine² structure



¹ Alliance (SA) Pty Ltd, Literature Review EL E15/1483, July 2016, AR Gray, Octogonal Resources Pty Ltd

² Adaman Resources, Snake Well Gold Project (source: Kalamazoo, 2017a and 2017b)

DRIVING WESTERN AUSTRALIA'S NEXT DISCOVERY

Corporate overview



PAUL LLOYD

Non-Executive Chairman

Currently Managing Director of Hawkstone Mining (ASX:HWK), a US-focused lithium and gold explorer, Mr Lloyd has been responsible for a number of successful IPOs, RTOs, project acquisitions and capital raisings for ASX-listed public companies.



EMMANUEL CORREIA

Non-Executive Director

Founding director of Peloton Capital and Peloton Advisory and has over 25 years public company and corporate finance experience.



GREG SMITH

Non-Executive Director

Exploration manager for Moto Gold Mines Ltd, responsible for the discovery of 22.5 million ounces of gold in the Democratic Republic of Congo (Kibali Mine). He is a Member of AusIMM.



LYLE THORNE

Consultant Geologist

A greenfields gold exploration specialist, Mr Thorne is a geologist with 28 years experience in Australia and overseas and is responsible for BPM project assessment and exploration delivery.

CHRIS SWALLOW

CHIEF EXECUTIVE OFFICER

Mr Swallow has more than 15 years' experience across both public and private sectors. Mr Swallow most recently worked in an operational capacity as the Corporate Development Officer for Guinea-focused gold explorer Predictive Discovery Limited (ASX:PDI)

CAPITAL STRUCTURE

36.3m

SHARES ON ISSUE

\$4.7m

CASH at Dec 2020

\$11.9m

MKT CAP at 16/02/21

\$7.2m

ENTERPRISE VALUE

NEPEAN PROJECT

Less than 2km from world-class nickel mine

TENURE AND GEOLOGICAL SETTING

- Located <2km south of the historic Nepean nickel Mine that produced 32,303 tonnes of mined nickel at an average recovered grade of 2.99% nickel³.
- Auroch Minerals (ASX-AOU) recently announced high-grade results from 3,500m of RC drilling, including:
 - 3m @ 3.70% Ni & 0.33% Cu from 91m,
 - including 2m @ 5.09% Ni & 0.47% Cu from 91m⁴
- Nepean Project underlain by geology similar to the Nepean nickel Mine.
- Prospective for both greenstone-hosted gold deposits and nickel sulphide deposits.
- Drilling underway with completed high priority holes logged, sampled and dispatched to lab.

MINERALISATION POTENTIAL



³ Focus Minerals commences feasibility study on Nepean Nickel Project (12 June 2007)

⁴ AOU Announcement - Intersections of over 5% Ni extend high-grade mineralisation at Nepean (15 Feb 2021)



Early-Stage Regional Exploration Commenced

7,000m of drilling to detect anomalous areas for follow-up deeper drilling & ground geophysics

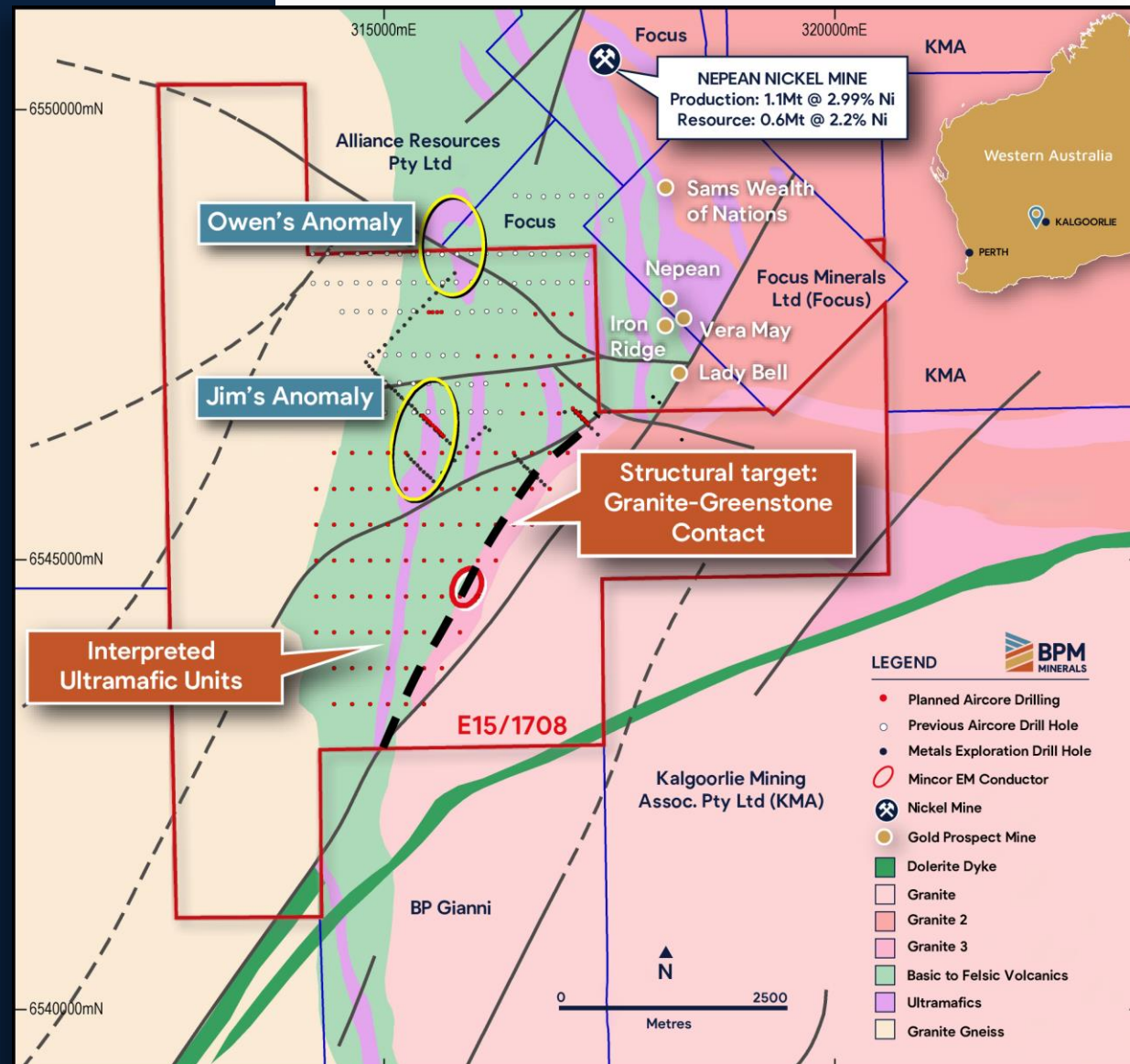
Prospective for Ni associated with interpreted ultramafic lithologies;

- Previous exploration suggests presence of ultramafic rocks.
- Ni sulphide mineralisation known in the greenstone belt (e.g. Nepean Mine).
- First pass wide spaced regional AC drilling designed to confirm presence of ultramafic lithologies.

Follow-up of historical RAB drilling gold anomalies;

- Wide spaced regional drilling targeting prospective structural trends.

High priority drill targets completed with regional drill program underway. First assay results due mid-March



Aggressive AC Drilling sets the stage

Phase 2 work program to follow

PHASE 1: REGIONAL AIRCORE DRILLING

- As 70% of the tenement and 100% of the prospective geology is regolith covered, AC drilling exploration.
- Drilling is the most effective first pass tool for exploration.
- A substantial AC drill program carried out on a 400m x 200m grid across the remaining prospective geology analysing the samples for both Ni and Au as part of a full suite of elements.

PHASE 2: GEOPHYSICS AND DRILLING

- Detailed ground EM and drone magnetics over selected target areas from Phase 1.
- Drilling will include infill AC, RC and diamond on any targets identified during Phase 1 and further refined by the geophysics.



SANTY PROJECT

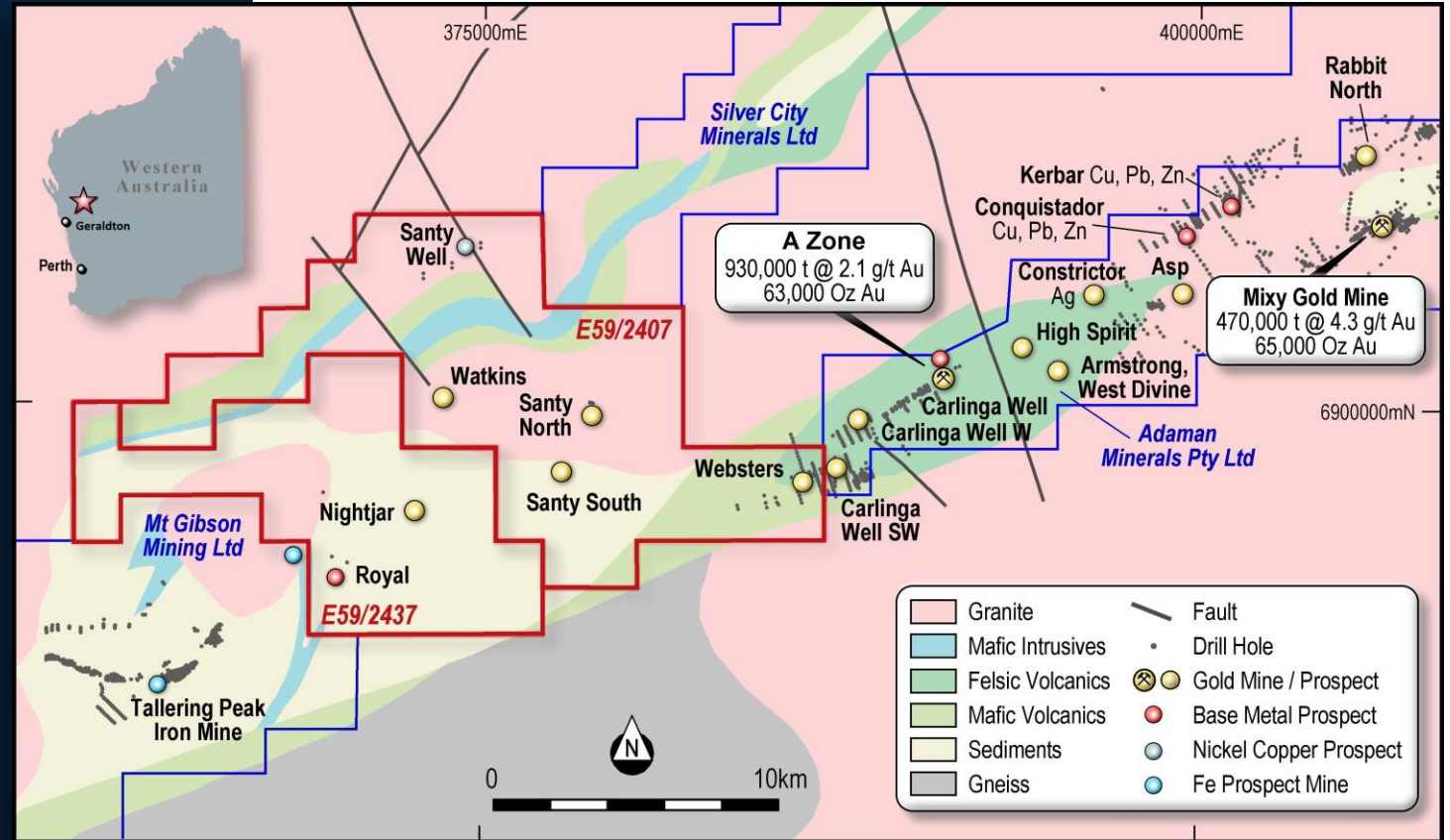
First-up exploration focus with anomalous Au, Ni, Cu and Zn

TENURE AND GEOLOGICAL SETTING

- 232km² project area covering two adjacent exploration licences.
- Access from Mt Magnet highway via station roads.
- Located in the Talling Greenstone belt.
- **80% of tenements are regolith covered**

PREVIOUS EXPLORATION

- Limited step-out AC/RC drilling at Websters intersected anomalous gold.
- Gold identified at Santy North in rock chip sampling (Au to 100.6 g/t) followed by limited RC drilling which returned anomalous results.
- Gold mineralisation identified at Santy South, Nightjar and Watkins.
- Highly anomalous Ni, Cu, Co and Cr reported in Fe targeted drilling on 2.8km long well defined magnetic high at Santy Well.
- Fe targeted drilling at Royal intersected anomalous Cu and Zn.



MINERALISATION POTENTIAL



SANTY FIRST-STRIKE EXPLORATION

Confirm priority targets for an aggressive first pass drilling campaign

PHASE 1: TARGET DEFINITION AND FOLLOWUP

- 80% of the Project area regolith covered - targeting of prospects will be completed via integration and interpretation of existing airborne magnetics.
- Initial AC drilling of target areas including Santy North nickel, Royal base metals and known gold occurrences to enable better understanding of the target and underlying geology.
- The ensuing geological interpretation / downhole geochemistry will identify areas for detailed drone magnetics and ground geophysics further to refine the targets.

PHASE 2

- Additional infill and extension AC drilling of targets highlighted during Phase 1.
- RC drilling and diamond drilling on identified mineralisation.



CLAW PROJECT

The rare untested Western Australian greenstone belt opportunity

TENURE AND GEOLOGICAL SETTING

- 134km² project area
- Located in the Murchison Province, 290 kilometres northeast of Perth.
- Access via Wubin and the Great Northern Highway
- Southern extension of the **Mt Gibson shear zone** (host the Mt Gibson Mine 1.7Moz) and interpreted using geophysics to extend south into project.
- **80% of tenement area is regolith covered.**
- Interpreted wedge of the Youanmi greenstone belt underlies the southern lobe of the tenement.

PREVIOUS EXPLORATION

Limited previous exploration includes shallow RAB drilling and partial aeromagnetic coverage.

MINERALISATION POTENTIAL

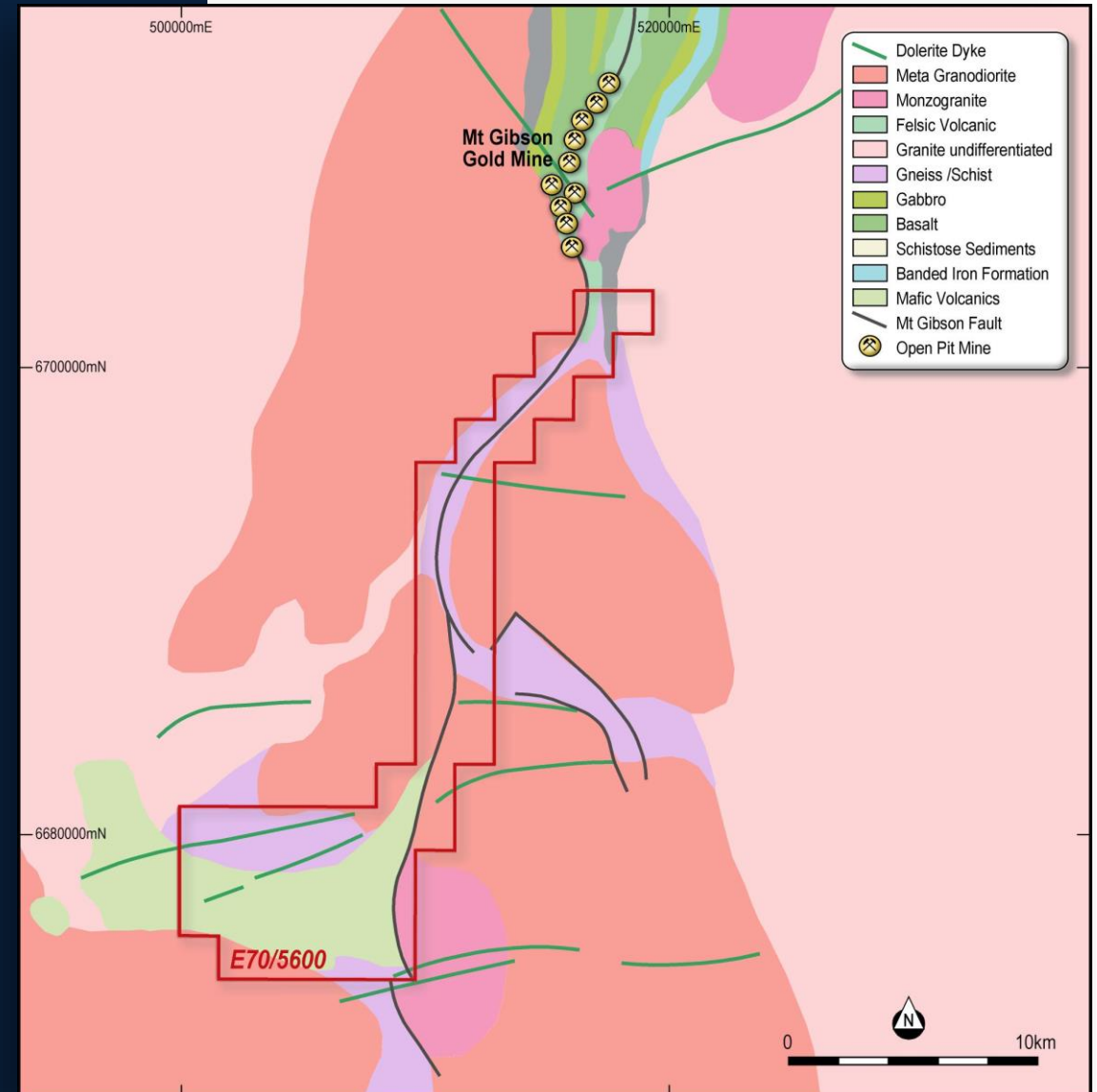
AU

Ag

Zn

Cu

Pb



CLAW FIRST-STRIKE EXPLORATION

Targeting Structurally Controlled Greenstone Gold Mineralisation

PHASE 1: EXPLORATION TARGETING

- >80% of the tenement covered in residual regolith.
- Geophysics and drilling will be utilised to test the gold potential of the underlying bedrock.
- Exploration will commence with reprocessing and interpretation of available aeromagnetic data to identify drill targets.
- AC drilling to test these structural targets.
- Southern lobe to be drilled on a broad grid.
- Interpreted southern extension of Mt Gibson Shear Zone a priority target.

PHASE 2: DETAILED GEOPHYSICS AND DRILLING

- Geophysical methods to follow-up on anomalies and mineralisation identified by targeting and AC drilling.
- Infill AC and RC / diamond drilling to test the identified mineralisation.

Claw represents a large structural target with untested gold potential



9-MONTH EXPLORATION FOCUS

BPM’s road to target definition across 3 projects

	Q1	Q2	Q3
NEPEAN PROJECT	7,000m of Phase 1 AC drilling	Infill AC, RC and DD drilling on targets identified during Phase 1	
SANTY PROJECT	Licence Granted POW and heritage approval	AC drilling of target areas including Santy North nickel, Royal and known gold occurrences	
CLAW PROJECT	Licence Granted	POW and heritage approval + reprocessing and interpretation of aeromagnetic data	AC drilling will be used to test these structural targets

UNEXPLORED GREENSTONES WITH GOLD - NICKEL POTENTIAL IN A TIER-1 JURISDICTION



THREE LARGELY UNEXPLORED PROJECTS

Exposure to gold - nickel projects in one of the worlds great mineralised regions



GREENSTONE BELTS AND NOTABLE NEIGHBOURS

Projects located within Western Australia's famed greenstone belts and close to high-profile and prolific historic and producing mines



EXPLORATION FOCUS

Outline mineral potential for Santy, Nepean and Claw with AC drilling and geophysics



FUNDED TO DRILL

Board and Management comprised of exploration professionals with experience discovering and funding resource projects globally



IMMINENT IMPACT

Exploration underway immediately



For further information please contact

Chris Swallow Chief Executive Officer

E cs@bpmminerals.com

P +61 412 174 882

This release is authorised by the Board of Directors
of BPM Minerals Limited.

