



Weld Range West Iron Project: Mid West Iron Opportunity

Investor Presentation

February 2021



Disclaimer - Forward Looking Statements

- This presentation may contain forward-looking statements. Where the Company expresses or implies an expectation or belief as to future events or results such expectation or belief is expressed in good faith and believed to have a reasonable basis. However, “forward looking statements” are subject to risks, uncertainties and other factors, which could cause actual results to differ materially from future results expressed, projected or implied by such “forward looking statements”.
- Such risks include but are not limited to diamond values, currency fluctuations, increased production costs and variances in grades or recovery rates from those assumed in mining plans, as well as political and operational risks in the countries and states in which the Company operates or sells product and governmental regulation and judicial outcomes.
- The Company does not undertake any obligation to release publicly any revisions to any “forward looking statement” to reflect events or circumstances after the date of this presentation or to reflect the occurrence of unanticipated events, except as may be required under applicable securities laws.
- The information contained in this presentation that relates to exploration strategy or to exploration results is based on information generated by Mount Ridley, and compiled by, or reviewed by, Mr David Crook who is a Member of the Australasian Institute of Mining and Metallurgy and the Australian Institute of Geoscientists. Mr Crook has sufficient experience which is relevant to the activities reported herein to qualify as a Competent Person as defined in the 2012 edition of the Joint Ore Reserves Committee (JORC) Australasian Code for Reporting of Exploration Results, Minerals Resources and Ore Reserves. Mr Crook consents to the inclusion in the presentation the matters based on his information in the form and context in which it appears.



Corporate Summary

Share Price	\$0.004
Shares (m)	3,880.6
Market Capitalisation (m)	\$15.5
Options (m)	1,556.8
Cash+ Liquid Securities:	
Cash at Bank (m)	\$1.26
Liquid Assets (m)	\$1.86
Total (m)	\$3.12

Board



Mr Peter Christie
Chairman

25 yrs Accountant / Public and
resource sector



Mr Graeme Johnston
Non-Executive Director

30 yrs Geologist / Iron, Gold
and Lithium



Mr Johnathon Busing
Company Secretary



Mr Simon Mitchell
Non-Executive Director

>30 yrs Geologist / Technical &
Corporate



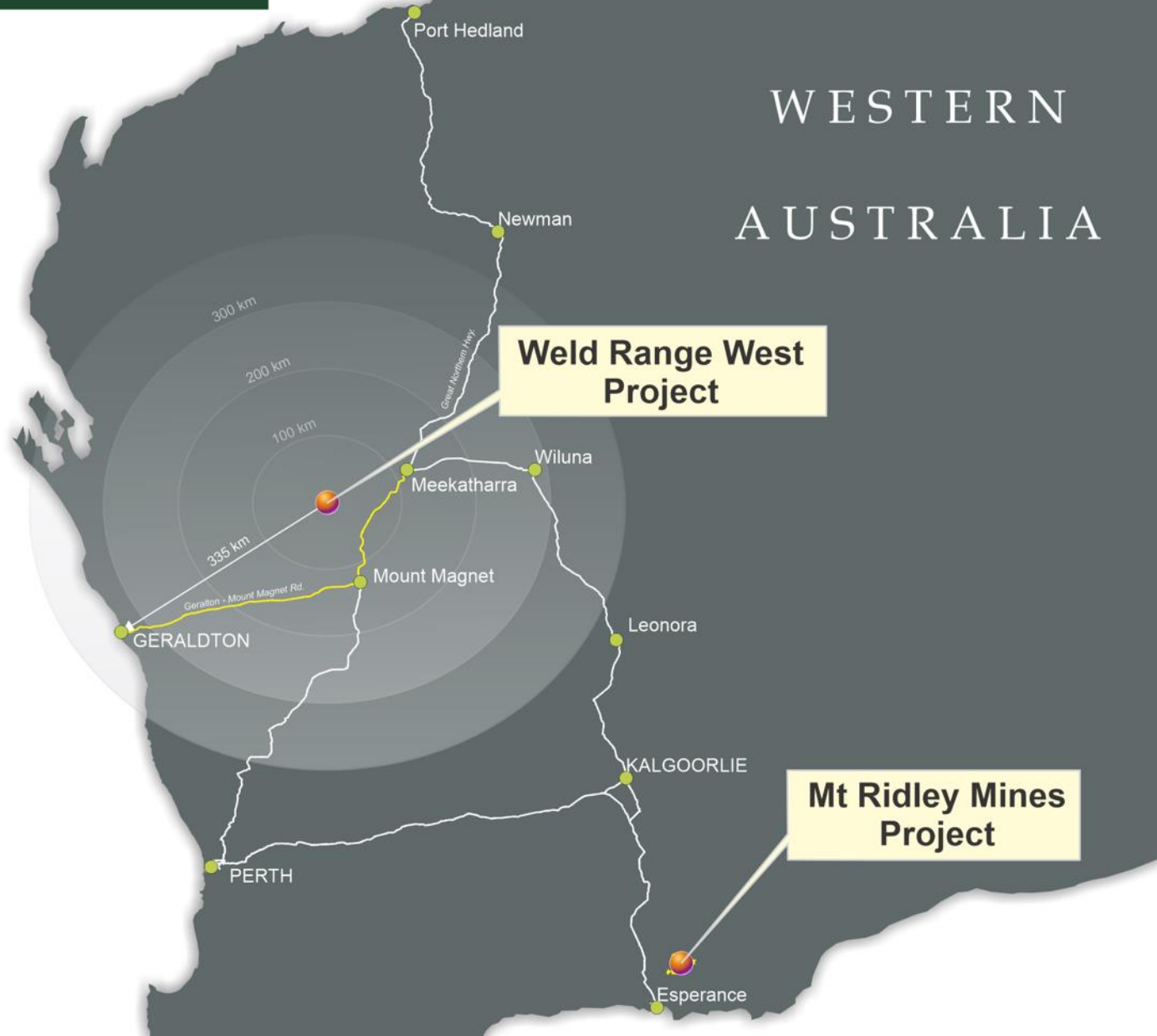
Mr Guy Le Page
Non-Executive Director

30 yrs Exploration and Finance
/ Corporate and resource sector



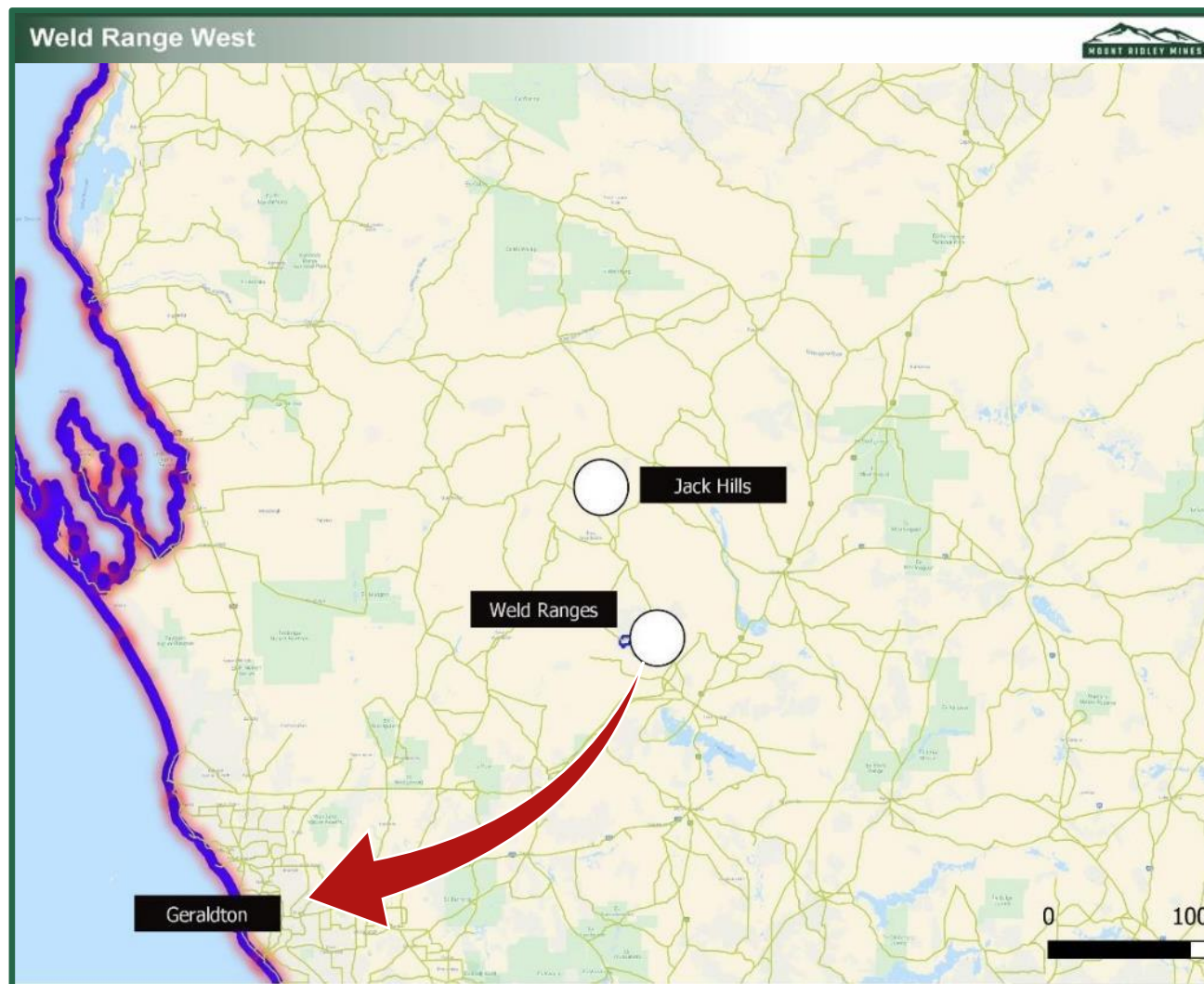
Mr David Crook
Technical Manager

>40 yrs Technical & Corporate
Nickel, Gold, Lithium, Iron



Projects

- **Weld Range West (Fe)**
- **Mount Ridley (Ni-Cu-PGE)**

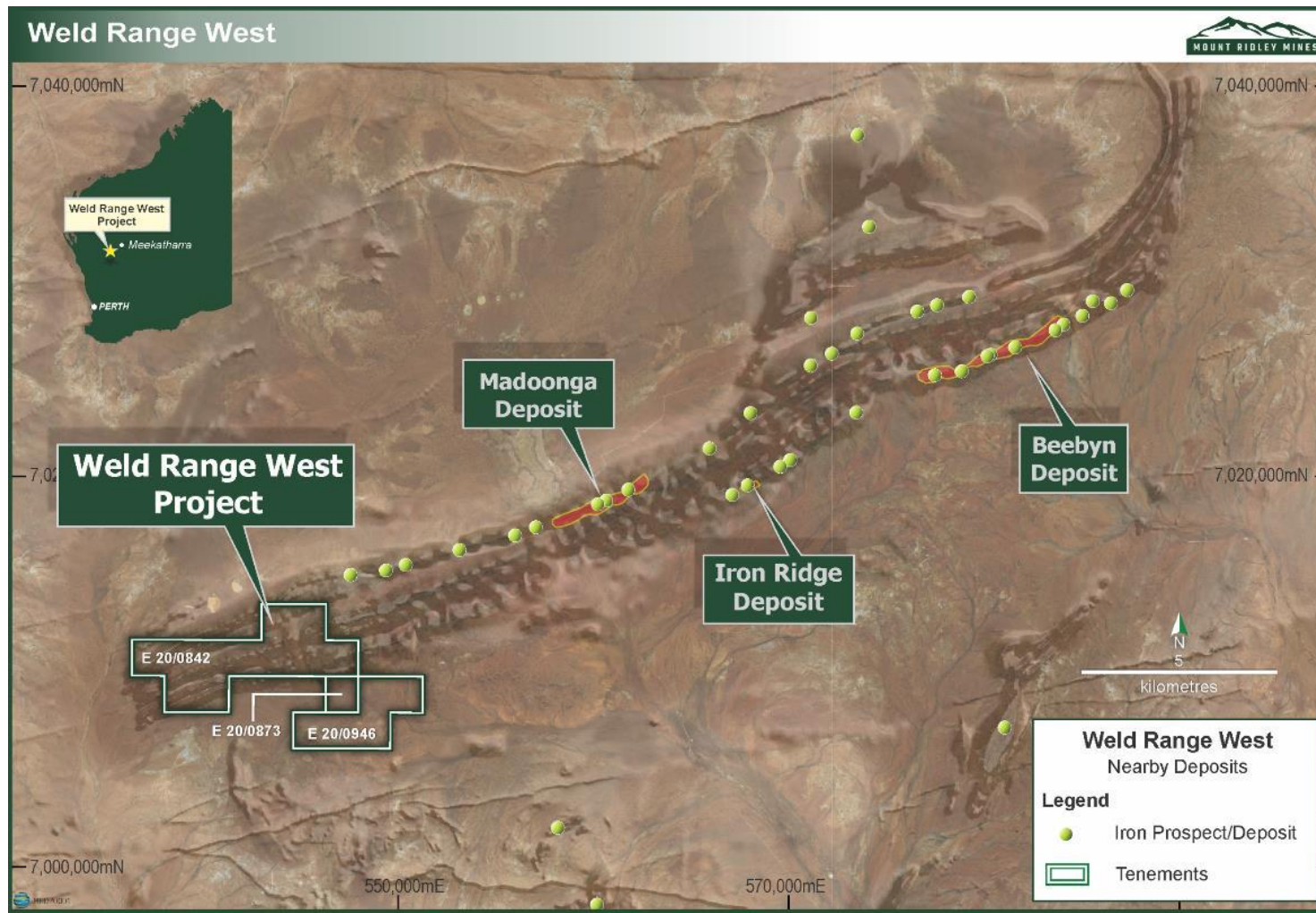


The Weld Range West Iron Project

- 490km from Geraldton
- Sealed road to the Project
- Ore previously trucked from Jack Hills, which is further away

SinoSteel:

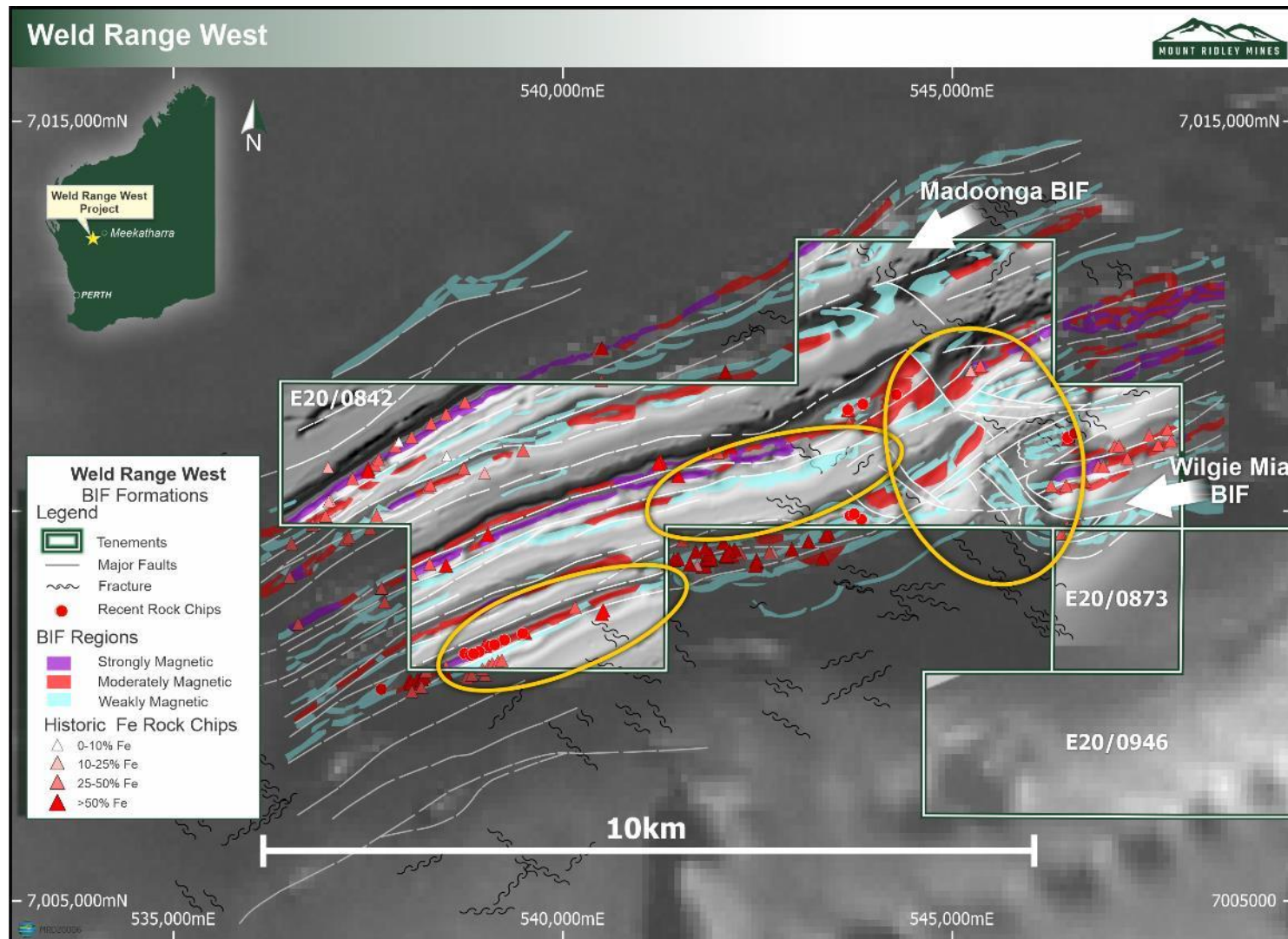
- Weld Ranges: (225 Mt – Beebyn, Madoonga deposits)
- Fenix Resources Ltd (ASX: FEX)
- Iron Ridge Project: 7.8Mt at 63.9% Fe



The Weld Range West Iron Project

- Weld Ranges are 66km long
- MRD holds 12km or 18%
- Sinosteel holds 54km or 82%
- Sinosteel quotes 225 million tonnes of iron ore at Beebyn and Madoonga deposits

Exploration Target is between 5Mt and 30Mt of DSO Massive Iron Mineralization



Next Steps

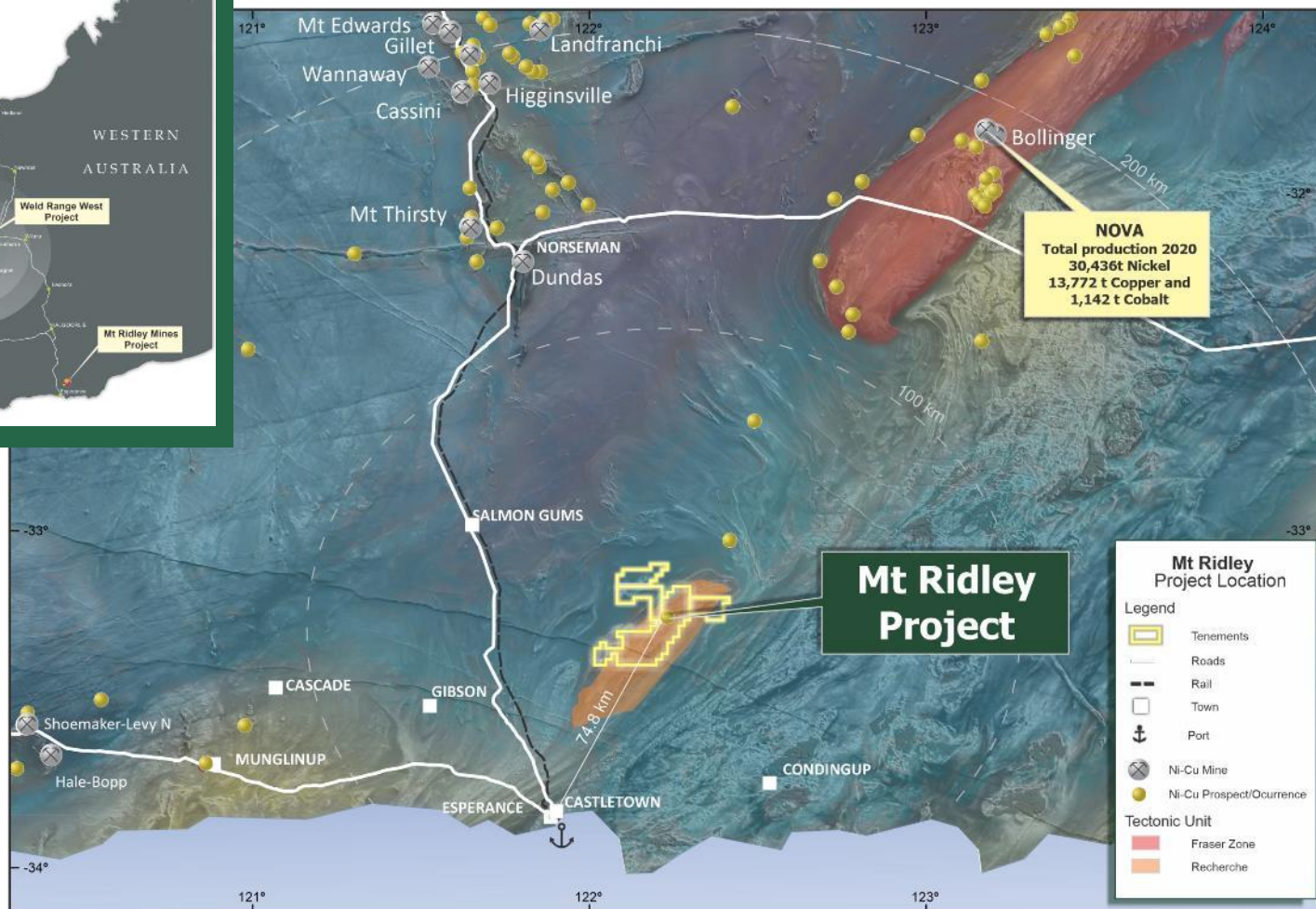
- Heritage Protection Surveys (now complete)
- Gravity survey and completion of geophysical modelling
- Flora survey
- RC Drilling
- \$3 Million budget for 2021

DSO Iron Target



The Weld Range West Iron Project

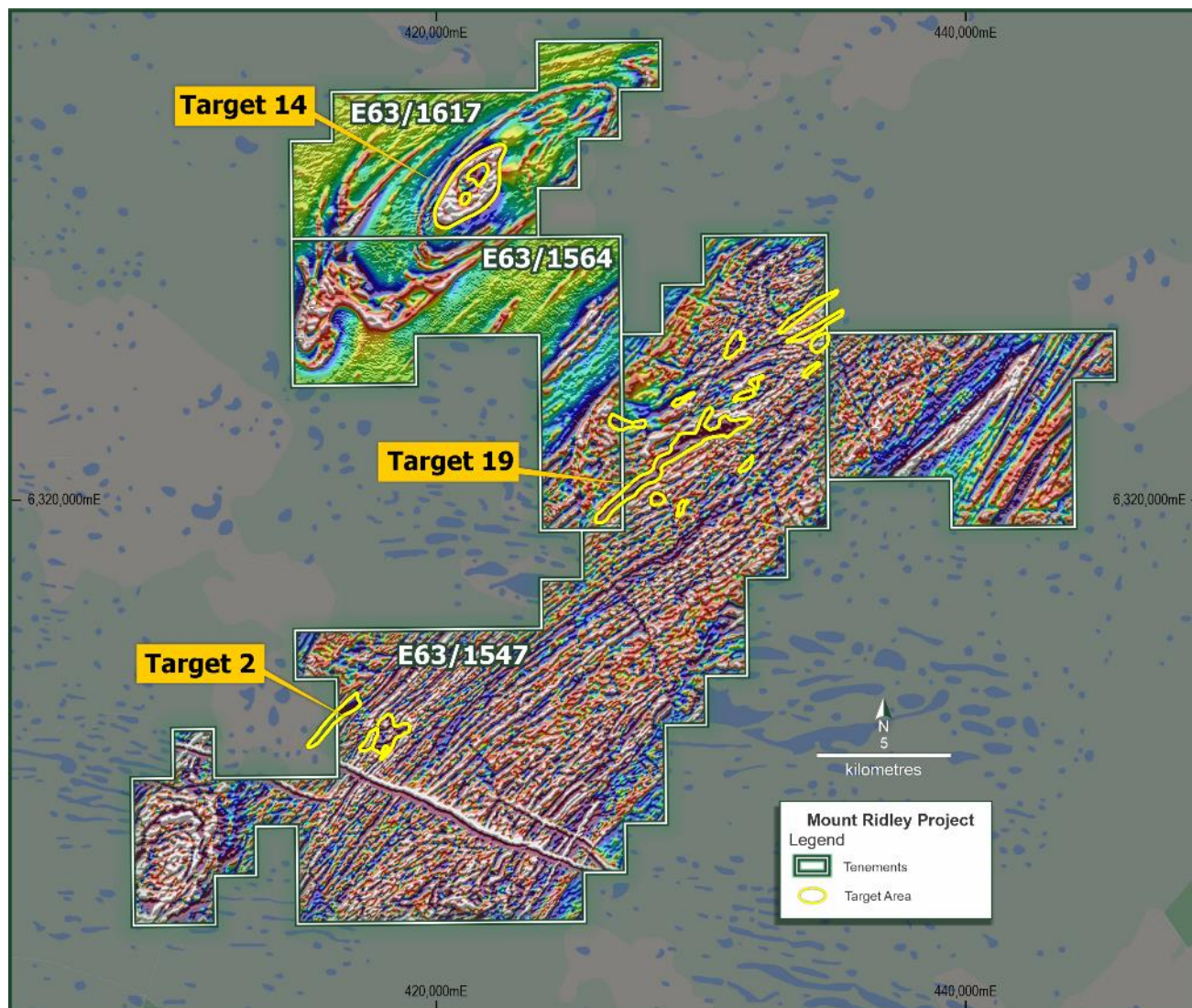
- Initial target 5 Mt, progressively growing this to >30 Mt.
- MRD has 18% of the Weld Ranges, thus provides an unparalleled opportunity to achieve this objective
- Initial Program and Budget to discover both DSO Haematite and Channel Iron for \$3M



The Mount Ridley Nickel Project

Nickel Sulphides

- Fraser Range Sub-basin
- Further drilling planned during 2021



The Mount Ridley Nickel Project

Fraser Range Nickel-Copper-PGE.

Targets generated through detailed geophysical data interrogation

Drilling to generate lithochemistry: vectors to Nova-Bollinger – styled mafic intrusions

Contact Information



Phone

+61 8 6165 8858

Email

info@mtridleymines.com.au

Website

www.mtridleymines.com.au

Address

Ground Floor, 168 Stirling Hwy Nedlands,
WA, 6009