

ASX ANNOUNCEMENT11th March 2021**Carnavale to acquire the Barracuda PGE-Ni-Cu Project in Western Australia and Placement to raise \$2.22M.**

Carnavale Resources Limited (ASX: CAV) is pleased to advise that it has agreed to acquire 100% of the Barracuda Platinum-Palladium-Nickel-Copper (PGE-Ni-Cu) Project (granted license E58/551) located 60km east of the gold mining town of Mt Magnet in the Murchison district of Western Australia.

Highlights

- The Barracuda PGE-Cu-Ni Project (48km²) is in the fertile Windimurra mafic ultramafic igneous complex
- Outcropping mineralisation on the contact between mafic (gabbroic) and olivine-rich ultramafic rocks assaying up to 8.27g/t platinum group elements ('PGE')⁶.
- PGE-sulphide minerals identified by WA Geological Survey within the Project area².
- Only 1,811m of drilling ever completed by Pancontinental Mining Ltd ('Pancon'), and no drilling since 1988.⁶
- No ground electromagnetic ('EM') or Induced Polarisation ('IP') geophysical surveys ever conducted.
- Project covers multiple coincident Pt-Pd-Cu-Ni soil anomalies identified by Pancon that remain untested.
- Commitments received for a capital raising from high net worth overseas, sophisticated and professional investors to raise \$2.1 million ('Placement').
- CAV Directors, Mr Ron Gajewski and Mr Andrew Beckwith have committed to subscribe for a total of \$126,000 which will be additional to and on the same terms as the Placement ('Director Placement Securities').

The funds raised will be used to acquire the Project, fund the initial exploration work and provide working capital. The exploration program will include an airborne EM survey and detailed review of the Project geochemistry and aeromagnetism.

Chairman Ron Gajewski commented:

"We are delighted to have been able to acquire a new Platinum, Palladium, Nickel, Copper exploration project in Western Australia with high-grade PGE mineralisation identified at surface. The Company will now contract an airborne electromagnetic survey, to be followed swiftly up by ground EM and analysis of the geochemistry to identify drill targets as soon as possible. This new project is a great fit with our existing exploration opportunities in nickel and gold."

Barracuda Ni Cu PGE Project

Outcropping PGE mineralisation assaying 8.27g/t PGE was discovered by Pancon in 1987 on the contact between mafic and olivine-rich ultramafic rocks. Subsequently, PGE-sulphide minerals were identified in the rocks by the Western Australia Geological Survey in 2016.

This highly prospective area has the potential to host substantial magmatic, mafic-ultramafic intrusion-related Pt-Pd-Ni-Cu sulphide deposits and has received no attention since Pancon drilled 1,811m of diamond and shallow (<100m) RC holes in 1988⁶.

CAV intends to apply the latest airborne EM technology to delineate conductors for drill testing as no ground-based electrical geophysical surveys (EM, IP) have ever been conducted within E58/551.

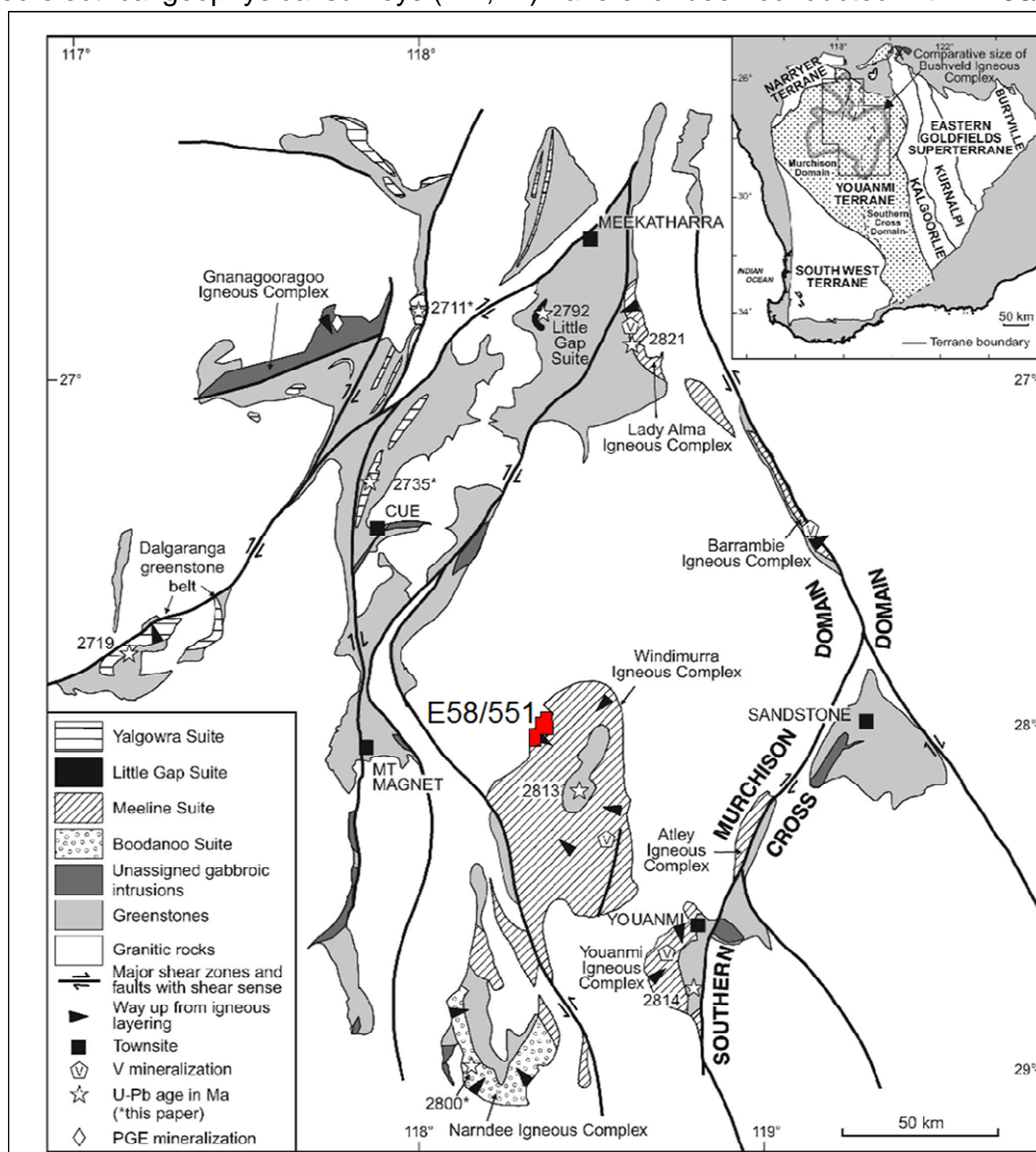


Figure 1, Location of the Barracuda PGE-Ni-Cu Project Area (E58/551)

Historical Exploration

Pancon held exploration licenses over most of the Windimurra Igneous Complex between 1985 and 1990 and targeted magmatic PGE-Ni-Cu sulphide mineralisation. Their exploration culminated in the discovery of outcropping magmatic PGE-Cr-Ni-Cu mineralisation in October 1987⁵ within the area now secured by E58/551.

Pancon initially conducted geological mapping and drainage sampling to identify and delineate PGE anomalous catchments and favourable geology. These areas were then followed-up with traverses of close-spaced (10m) soil sampling (-80 mesh) on lines 200m to 800m apart. Unfortunately, this soil assay data (Cu, Ni, Pt, Pd) was only ever presented graphically (analogue) as stacked line profiles ⁶. It is possible to rebuild digital assay tables from the Pancon diagrams to enable advanced data manipulation and reinterpretation – a process that CAV will undertake, and it is likely to identify new drill targets when interpreted in conjunction with new, and the first ground EM survey data.

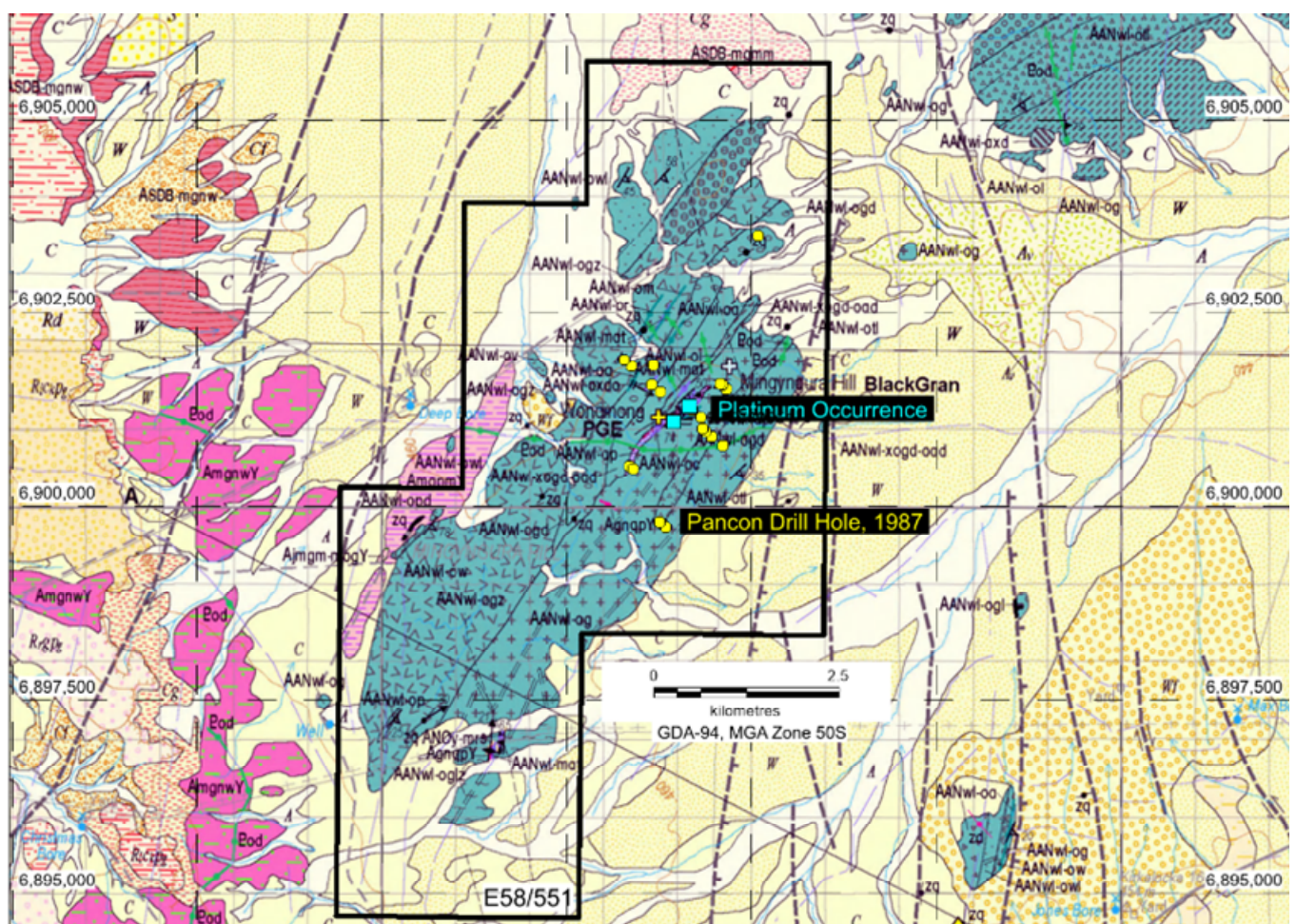


Figure 2, Location of Pancon. Drill Holes (yellow) and rock chip samples (blue)

Pancon drilled seven diamond (WO-1 to W0-7) and 15 RC percussion (WP-1 to WP-15) holes (Table 1) for a total of 1,811m, and concluded that the Wondinong area (now within E58/551) contains some of the most fertile (least evolved), metal-rich (PGE-Ni-Cu), olivine-bearing mafic (gabbroic) and ultramafic rocks within the Windimurra Igneous Complex. Rock-chip samples assayed up to 3.15g/t Platinum and 4.30g/t Palladium, 0.38g/t Rhodium and 0.34g/t Rubidium (Figure2 and 3), and PGE-sulphide minerals were identified in rock samples by Pancon⁶, and subsequently confirmed by the Western Australia Geological Survey in 2016².

Pancon's drilling in 1988 intersected broad intervals (>20m) of olivine-bearing gabbroic rocks that contain anomalous copper (200 to 800ppm Cu), nickel (200 to 800ppm Ni) and platinum-palladium (100 to 500ppb Pt+Pd), which further highlights the fertility of the system, and a number of higher-grade intervals associated with magmatic sulphide were delineated by their limited drilling (tabulated below).

Hole No.	Interval (m)	Pt ppb	Pd ppb	Pt + Pd
WO-2	10-11	430	1200	1.63 g/t
WP-3	40-41	760	680	1.44 g/t
WP-12	20-21	215	580	795 ppb

No further holes were drilled and no further exploration for magmatic PGE-Ni-Cu sulphide has been conducted within the area since 1990. Pancon relinquished its exploration license (E58/41) in August 1991.



Figure 3, Outcropping PGE mineralization at the Barracuda PGE-Ni-Cu Project.

Location: 634164E 6901306N, Zone 50, GDA-94

Pancon had a focused drilling campaign following the discovery of the outcropping PGE mineralisation. However, CAV intends to take a broader approach to evaluating this fertile intrusive sequence of mafic-ultramafic rocks by applying technologies that were not available to Pancon at the time such as helicopter-borne airborne EM.

Exploration Strategy

CAV intends to undertake initial fieldwork at the Barracuda project as soon as possible. The proposed work program includes;

- Fly the Project area with airborne EM (*used by Chalice Mining Limited (ASX:CHN) to define the Julimar PGE- Ni-Cu-Co-Au discovery*).
- Digitally capture the Pancontinental soil geochemistry and contour the PGE, Ni, and Cu data to define metal-anomalous trends.
- Follow-up airborne EM anomalies with ground EM, with priority given to areas with established, coincident PGE-Cu-Ni soil anomalism.
- Drill-test targets subject to results.

Project Acquisition Terms

CAV has agreed to acquire 100% of the Barracuda PGE-Ni-Cu Project E58/551, from Corporate & Resource Consultants Pty. Ltd ('CRC') and Bruce Legendre ('BL') ('Vendors'). The Vendors are not a related party of the Company.

CAV has paid a \$10,000 non-refundable deposit, with the balance of \$40,000 in cash and 20 million fully paid ordinary shares in CAV payable at settlement to the Vendors of the Project (pursuant to CAV's existing placement capacity under Listing Rule 7.1).

Settlement will occur 5 business days after Ministerial consent has been granted for the transfer and the Vendors have transferred the title of E58/551 to CAV.

In addition, CAV will also grant the vendors a 0.5% Net Smelter Return ('NSR') royalty on minerals produced from the tenement.

Capital raising

CAV has received support for a Placement from overseas, sophisticated and professional investors to raise \$2.1 million ('Placement'). CAV proposes to issue 300 million shares at an issue price of \$0.007 per share, together with 150 million free attaching options (exercisable at \$0.01 on or before 31 July 2022).

Golden Triangle Capital Pty Ltd ('GTCap') has been appointed as Lead Manager for the Placement. For managing the capital raising (including obtaining the firm commitments), GTCap (or its nominee) will receive a 6% capital raising fee and subject to shareholder approval, 40 million unlisted options exercisable at \$0.01 each on or before 31 July 2022.

The funds raised will be used to acquire the Project, fund the initial exploration program at the Barracuda project, fund ongoing and planned exploration programs at the Company's existing projects and provide working capital. The exploration program will include an airborne EM survey and detailed review of the Project geochemistry and aeromagnetism.

200 million ordinary shares will be issued under the Company's existing placement capacity under Listing Rule 7.1A and 100 million ordinary shares under Listing Rule 7.1. The Placement is scheduled to close on or around 16 March 2021. 150 million free attaching options will be issued to the participants of the Placement subject to shareholder approval, at a general meeting of shareholders scheduled for May 2021.

Director participation

CAV Chairman, Mr Ron Gajewski has committed to subscribe for 15 million new ordinary shares (and 7.5 million attaching options) totalling \$105,000 and CAV director, Mr Andrew Beckwith has committed to subscribe for 3 million new ordinary shares (and 1.5 million attaching options) totalling \$21,000 ("Director Placement Securities"). The Director Placement Securities require the approval of shareholders pursuant to Listing Rule 10.11.

All new shares issued pursuant to the Placement will rank equally with existing fully paid ordinary shares in the Company.

This release is approved by the Board of Carnavale Resources Limited.

For further information contact:

Ron Gajewski

Humphrey Hale

Chairman

Managing Geologist

P: +61 8 9380 9098

Competent Persons Statement

The information that relates to Exploration Results for the projects discussed in this announcement represents a fair and accurate representation of the available data and studies; and is based on, and fairly represents information and supporting documentation reviewed by Mr. Humphrey Hale, a Competent Person who is a Member of The Australian Institute of Geoscientists. Mr. Hale is a Consultant to Carnavale Resources Limited. Mr. Hale has sufficient experience that is relevant to the style of mineralisation and type of deposit under consideration and to the activity being undertaken to qualify as a Competent Person as defined in the 2012 Edition of the "Australasian Code for Reporting of Exploration Results, Mineral Resource and Ore Reserves". Mr. Hale consents to the inclusion in this report of the matters based on his information in the form and context in which it appears.

Forward Looking Statements

Statements regarding Carnavale's plans with respect to the mineral properties, resource reviews, programs, economic studies and future development are forward-looking statements. There can be no assurance that Carnavale's plans for development of its mineral properties will proceed any time in the future. There can also be no assurance that Carnavale will be able to confirm the presence of additional mineral resources/reserves, that any mineralisation will prove to be economic or that a mine will successfully be developed on any of Carnavale's mineral properties.

Information relating to Previous Disclosure

References

- ¹ BARNES, S.J., HILL, R.E.T., (Eds.) 1991. Mafic-Ultramafic Complexes of Western Australia, Sixth International Platinum Symposium Excursion Guidebook No. 3. Geological Society of Australia (W.A. Division).
- ² IVANIC, T.J. 2016. A field guide to the mafic-ultramafic intrusions of the Youanmi Terrane, Yilgarn Craton. GSWA Record 2016/6.
- ³ IVANIC, T.J., WINGATE, M.T.D., KIRKLAND, C.L., VAN KRANENDONK, M.J., WYCHE, S. 2010. Age and significance of voluminous mafic-ultramafic magmatic events in the Murchison Domain, Yilgarn Craton. Australian Journal of Earth Sciences 57, 597-614.

Pancontinental Mining Ltd. reports

- ⁴ WAMEX A21081, First Annual Report Windimurra Project June 1986 to June 1987. Company Report
- ⁵ WAMEX A23847, Second Annual Report Windimurra Project June 1987 to June 1988. Company Report
- ⁶ WAMEX A28015, Third Annual Report Windimurra Project June 1988 to June 1989. Company Report
- ⁷ WAMEX A33863, Fourth Annual Report Windimurra Project June 1989 to June 1990. Company Report
- ⁸ WAMEX reports can be viewed on the Department of Mines, Industry Regulation and Safety website and at the following address <https://www.dmp.wa.gov.au/Geological-Survey/Mineral-exploration-Reports-1401.aspx>

Table 1. Holes drilled by Pancontinental Mining Limited 1988 (WAMEX A28015⁶)

Hole No.	Hole Type	East GDA-94 z50	North GDA-94 z50	Grid East	Grid North	Angle (deg)	Azimuth (mag)	Depth (m)
WO-1	Diamond	633771	6901478	14600	19230	-55	310	210
WO-2	Diamond	634192	6901259	14700	18766	-55	310	98
WO-3	Diamond	634465	6900904	14600	18330	-55	310	174
WO-4	Diamond	634320	6901154	14700	18601	-55	310	165
WO-5	Diamond	633370	6901809	14600	19750	-55	310	34
WO-6	Diamond	633274	6901889	14600	19875	-55	310	110
WO-7	Diamond	633652	6901576	14600	19385	-55	310	89
WP-1	RC Perc	634611	6900783	14600	18140	-55	310	51
WP-2	RC Perc	634624	6901551	15200	18620	-55	310	65
WP-3	RC Perc	634662	6901519	15200	18570	-55	310	63
WP-4	RC Perc	634601	6901570	15200	18650	-55	310	60
WP-5	RC Perc	633794	6899771	13300	18125	-55	310	62
WP-6	RC Perc	633840	6899733	13300	18065	-55	310	63
WP-7	RC Perc	633755	6899803	13300	18175	-55	310	25
WP-8	RC Perc	633350	6900528	13600	18950	-55	310	81
WP-9	RC Perc	633396	6900490	13600	18890	-55	310	75
WP-10	RC Perc	634380	6900974	14600	18440	-55	310	51
WP-11	RC Perc	634341	6901006	14600	18490	-55	310	57
WP-12	RC Perc	634197	6901255	14700	18760	-90	vertical	28
WP-13	RC Perc	633671	6901820	14800	19525	-55	310	81
WP-14	RC Perc	635093	6903499	17000	19500	-55	310	69
WP-15	RC Perc	634577	6901589	15200	18680	-55	310	100
Total (m)								1811

JORC Code, 2012 Edition – Table 1

Section 1 Sampling Techniques and Data

(Criteria in this section apply to all succeeding sections)

Criteria	JORC Code explanation	Commentary
Sampling techniques	<ul style="list-style-type: none"> <i>Nature and quality of sampling (e.g. cut channels, random chips, or specific specialised industry standard measurement tools appropriate to the minerals under investigation, such as down hole gamma sounds, or handheld XRF instruments, etc.). These examples should not be taken as limiting the broad meaning of sampling.</i> <i>Include reference to measures taken to ensure sample representivity and the appropriate calibration of any measurement tools or systems used.</i> <i>Aspects of the determination of mineralisation that are Material to the Public Report.</i> <i>In cases where ‘industry standard’ work has been done this would be relatively simple (e.g. ‘reverse circulation drilling was used to obtain 1 m samples from which 3 kg was pulverised to produce a 30 g charge for fire assay’). In other cases more explanation may be required, such as where there is coarse gold that has inherent sampling problems. Unusual commodities or mineralisation types (e.g. submarine nodules) may warrant disclosure of detailed information.</i> 	<p>Drilling (Pancontinental Mining Limited, 1987-1989 WAMEX A28015)</p> <ul style="list-style-type: none"> Pancontinental Mining Limited (Pancon) has not recorded the name of the company that conducted the drilling in their historical 1980's annual reports. A total of 1811m of drilling was completed in 1988, comprising 7 diamond holes (880m) and 15 RC percussion (931m). Holes were drilled grid north (310deg magnetic) at either -55deg (diamond holes) or -60deg (RC holes). One RC hole (unsuccessful water bore) was vertical. Drill hole positions were recorded by Pancon relative to a surveyed local grid (no GPS system available at the time), and many have subsequently been located and positioned by Corporate & Resource Consultants Pty Ltd (CRC) using a hand-held GPS. PVC collars could still be found in many cases. Once the precise location (GDA-94) of some holes were established from recording the location of PVC collars, the location of other holes with no PVC collar protruding could then be determined to an estimated +/- 10m accuracy. This accuracy was confirmed for these unmarked holes from the RC chips located lying on the surface even though a drill hole collar could not be identified. RC drill cuttings were collected in a cyclone and split on-site, and the cuttings were sampled on 1m intervals. Nominal 3kg samples was sent to Genalysis in Perth for a total mix and grind and then Pt, Pd and Au determined using a 50g charge fire assay (lead collection) ICP/MS. Cu and Ni determined by single acid digest AAS. NQ diamond core was sawn in the field and half-core sampled on 1m intervals. Assay methods were the same as those used for the RC chips (dot point above). The samples were collected by Pancon staff, and the samples were always kept under the direct control of Pancon staff. Samples were transported to the laboratory (Genalysis) in Perth by Pancon staff. <p>Soils 1987 Program (Pancontinental Mining Limited, WAMEX A23847)</p> <ul style="list-style-type: none"> Soil samples (the total number has not been determined) were collected in 1987 by

Criteria	JORC Code explanation	Commentary
		<p>trained and experienced Pancon field technicians.</p> <ul style="list-style-type: none"> • Samples were collected at 10m intervals along lines spaced 200m to 800m apart. • The samples were collected by digging and removing soil from shallow holes (~15cm deep). The soil from each sample pit was sieved to minus 165 microns using stainless steel sieves and approximately 200g of the sieved material collected in craft (paper) bags. • The QA/QC data collected over the course of the program indicate no issues were encountered with the analytical method and assay results. • The data (sample number, grid location, comments) was collected and stored manually (written onto sample sheets) in the field. • Samples were assayed in Perth by Genalysis. The nominal 200g samples went through a total mix and grind and then Pt, Pd and Au determined using a 50g charge for fire assay (lead collection) ICP/MS. Cu and Ni were determined by single acid digest AAS. <p>Drainage Samples (Pancontinental Mining Limited)</p> <ul style="list-style-type: none"> • Drainage samples were collected by trained and experienced Pancon field technicians, at a nominal sample density of 10 sample sites per square km. • The samples were collected by digging and removing soil from shallow holes (~10cm deep). The stream sediment from each sample pit was then sieved to minus 165 microns using a stainless-steel sieve and approximately 200g of the sieved material collected in craft (paper) bags. • Heavy mineral trap sites were avoided as sample sites. • The QA/QC data collected over the course of the program indicate no issues were encountered with the analytical method and assay results. • The data (sample number, grid location, comments) was collected and stored manually in the field. • Samples were assayed in Perth by Genalysis. The nominal 200g samples went through a total mix and grind and then Pt, Pd and Au determined using a 50g charge for fire assay (lead collection) ICP/MS. Cu and Ni determined by single acid digest AAS.

Criteria	JORC Code explanation	Commentary
		Rock-chip Samples (Pancontinental Mining Limited) <ul style="list-style-type: none"> Each sample is a composite of approximately 5 pieces of rock collected within a 3m radius of the recorded sample point to give a total sample weight of approximately 3kg. The samples were secured at the Pancon camp-site before being driven to the laboratory (Genalysis in Perth) by Pancon staff. The laboratory's standard QA/QC procedures were carried out. The samples went through a total mix and grind and then Pt, Pd and Au was determined using a 50g charge for fire assay (lead collection) ICP/MS. Cu and Ni determined by single acid digest AAS. Pt, Pd, Rh, Ru, Os, Ir was determined for a few samples by 30g fire assay (nickel sulphide collection) ICP/MS.
Drilling techniques	<ul style="list-style-type: none"> Drill type (e.g. core, reverse circulation, open-hole hammer, rotary air blast, auger, Bangka, sonic, etc.) and details (e.g. core diameter, triple or standard tube, depth of diamond tails, face-sampling bit or other type, whether core is oriented and if so, by what method, etc.). 	<ul style="list-style-type: none"> RC percussion and diamond core were the drilling methods chosen by Pancon. Aircore was not considered an appropriate drilling method because of the shallow depth of weathering. The RC holes were drilled with a face-sampling hammer using industry practice drilling methods. Diamond NQ drill core was collected using double tube and all other industry practice methods.
Drill sample recovery	<ul style="list-style-type: none"> Method of recording and assessing core and chip sample recoveries and results assessed. Measures taken to maximise sample recovery and ensure representative nature of the samples. Whether a relationship exists between sample recovery and grade and whether sample bias may have occurred due to preferential loss/gain of fine/coarse material. 	<ul style="list-style-type: none"> This information was not reported by Pancon, but recoveries were very high due to the absence of ground water, thin (<2m) or absent transported cover, absence of faults and shears, and the high competency (unbroken nature) of the gabbroic rocks.
Logging	<ul style="list-style-type: none"> Whether core and chip samples have been geologically and geotechnically logged to a level of detail to support appropriate Mineral Resource estimation, mining studies and metallurgical studies. Whether logging is qualitative or quantitative in nature. Core (or costean, channel, etc.) photography. 	<ul style="list-style-type: none"> Comprehensive drill logs for all holes have been reported by Pancon (WAMEX A28015). Cumulate terminology was used where the model proportions of olivine (o), clinopyroxene (a), orthopyroxene (b), plagioclase (p), chromite (c) and sulphide (s) were recorded for each igneous stratigraphic unit. 'C' was used to distinguish cumulate

Criteria	JORC Code explanation	Commentary
	<ul style="list-style-type: none"> <i>The total length and percentage of the relevant intersections logged.</i> 	<p>phases from post-cumulus poikilitic phases (*). Pegmatoidal, non-cumulus units were also logged (peg).</p>
Sub-sampling techniques and sample preparation	<ul style="list-style-type: none"> <i>If core, whether cut or sawn and whether quarter, half or all core taken.</i> <i>If non-core, whether riffled, tube sampled, rotary split, etc. and whether sampled wet or dry.</i> <i>For all sample types, the nature, quality and appropriateness of the sample preparation technique.</i> <i>Quality control procedures adopted for all sub-sampling stages to maximise representivity of samples.</i> <i>Measures taken to ensure that the sampling is representative of the in-situ material collected, including for instance results for field duplicate/second-half sampling.</i> <i>Whether sample sizes are appropriate to the grain size of the material being sampled.</i> 	<ul style="list-style-type: none"> RC drill cuttings were collected in a cyclone and split on-site, and the cuttings were sampled by Pancon staff on 1m intervals. Nominal 3kg drill-chip samples were sent to Genalysis in Perth for a total mix and grind and then Pt, Pd and Au determined using a 50g charge for fire assay (lead collection) ICP/MS. Cu and Ni determined by single acid digest AAS. NQ diamond core was sawn in the field and half-core sampled on 1m intervals. Assay methods were the same as that used for the RC chips. The samples were collected by Pancon staff, and the samples were always under the direct control of Pancon staff. Samples were transported to the laboratory (Genalysis) in Perth by Pancon staff. The sample sizes were considered appropriate for early-stage exploration.
Quality of assay data and laboratory tests	<ul style="list-style-type: none"> <i>The nature, quality and appropriateness of the assaying and laboratory procedures used and whether the technique is considered partial or total.</i> <i>For geophysical tools, spectrometers, handheld XRF instruments, etc., the parameters used in determining the analysis including instrument make and model, reading times, calibrations factors applied and their derivation, etc.</i> <i>Nature of quality control procedures adopted (e.g. standards, blanks, duplicates, external laboratory checks) and whether acceptable levels of accuracy (i.e. lack of bias) and precision have been established.</i> 	<ul style="list-style-type: none"> Laboratory QA/QC samples involving the use of blanks, duplicates, standards (certifies reference materials) and replicates were used as part of in-house procedures. Check samples were also sent to Germany for check analyses by Pancon's JV project partner, Degussa Ag.
Verification of sampling and assaying	<ul style="list-style-type: none"> <i>The verification of significant intersections by either independent or alternative company personnel.</i> <i>The use of twinned holes.</i> <i>Documentation of primary data, data entry procedures, data verification, data storage (physical and electronic) protocols.</i> <i>Discuss any adjustment to assay data.</i> 	<ul style="list-style-type: none"> Results were verified by Pancon project management.
Location of data	<ul style="list-style-type: none"> <i>Accuracy and quality of surveys</i> 	<ul style="list-style-type: none"> The drill collar positions were recorded

Criteria	JORC Code explanation	Commentary
points	<p><i>used to locate drill holes (collar and down-hole surveys), trenches, mine workings and other locations used in Mineral Resource estimation.</i></p> <ul style="list-style-type: none"> <i>Specification of the grid system used.</i> <i>Quality and adequacy of topographic control.</i> 	<p>relative to a surveyed local grid.</p> <ul style="list-style-type: none"> Hole positions have subsequently been recorded using a hand-held GPS as the PVC collars for most holes could be located in the field trip undertaken in 2021, and the position of these holes were then used to establish the position of the survey grid to an accuracy of +/- 20m. The grid has now been positioned (+/- 20m) in GDA-94, Zone 50. Variation in topography is approximately 20m within the drill zone.
Data spacing and distribution	<ul style="list-style-type: none"> <i>Data spacing for reporting of Exploration Results.</i> <i>Whether the data spacing and distribution is sufficient to establish the degree of geological and grade continuity appropriate for the Mineral Resource and Ore Reserve estimation procedure(s) and classifications applied.</i> <i>Whether sample compositing has been applied.</i> 	<ul style="list-style-type: none"> Drill holes were positioned to test specific parts of the igneous stratigraphy that gave an anomalous Cu-Ni-Pt-Pd response in the soil geochemistry. No ground electrical geophysical techniques (EM or IP) were used to target drill holes. Pancon geologists supervised all drilling. No resource estimation drilling was undertaken.
Orientation of data in relation to geological structure	<ul style="list-style-type: none"> <i>Whether the orientation of sampling achieves unbiased sampling of possible structures and the extent to which this is known, considering the deposit type.</i> <i>If the relationship between the drilling orientation and the orientation of key mineralised structures is considered to have introduced a sampling bias, this should be assessed and reported if material.</i> 	<ul style="list-style-type: none"> Surface sampling and the positions of the drill holes, sampling techniques and the intervals sampled (all intervals drilled) are considered appropriate for the early-stage exploration of a large mafic-ultramafic igneous complex. Due to the shallow depth of weathering, surface depletion or enrichment of metals in the weathered zone was not considered to be a significant issue.
Sample security	<ul style="list-style-type: none"> <i>The measures taken to ensure sample security.</i> 	<ul style="list-style-type: none"> Chain of Custody was managed by Pancon staff. The samples were taken directly to the laboratory (Genalysis, Perth) by Pancon staff with appropriate documentation listing sample numbers, sample batches, and required analytical methods and element determinations.
Audits or reviews	<ul style="list-style-type: none"> <i>The results of any audits or reviews of sampling techniques and data.</i> 	<ul style="list-style-type: none"> No additional QA/QC has been conducted on the drilling as the core, RC chip residues, and the drainage, soil and rock-chip sample pulps are no longer stored and they are presumed lost due to the age of the drilling (conducted 34 years ago) and a series of company mergers and the delisting of Pancontinental Mining Limited. Carnavale considers the Pancon assay data to be highly reliable and accurate given the analytical method used by Pancon to determine Pt, Pd and Au – fire assay (lead collection) ICP/MS.

Section 2 Reporting of Exploration Results

(Criteria listed in the preceding section also apply to this section.)

Criteria	JORC Code explanation	Commentary
Mineral tenement and land tenure status	<ul style="list-style-type: none"> Type, reference name/number, location and ownership including agreements or material issues with third parties such as joint ventures, partnerships, overriding royalties, native title interests, historical sites, wilderness or national park and environmental settings. The security of the tenure held at the time of reporting along with any known impediments to obtaining a license to operate in the area. 	<ul style="list-style-type: none"> E58/551 is registered to Corporate & Resource Consultants Pty Ltd and BR Legendre, and 100% ownership is to be transferred once Ministerial Approval has been granted. The exploration license (E58/551) is in good standing and payment of all statutory fees is managed by CRC. E58/551 is currently in its first year (license granted 7 July 2020) and the first year's minimum expenditure commitment has been met. There are no known impediments to operating in this area. There are no Native Title Claims. The tenement area falls on two Pastoral properties – Challa and Wondinong.
Exploration done by other parties	<ul style="list-style-type: none"> Acknowledgment and appraisal of exploration by other parties. 	<ul style="list-style-type: none"> No exploration (soil sampling, drilling) for Pt-Pd-Cu-Ni mineralisation has been undertaken within the area now covered by E58/551 since Pancon's work in the late 1980's. The area has been held by other companies, but no substantive additional exploration work appears to have been undertaken.
Geology	<ul style="list-style-type: none"> Deposit type, geological setting and style of mineralisation. 	<ul style="list-style-type: none"> The project is considered to be prospective for mafic-ultramafic hosted, magmatic, Pt-Pd-Ni-Cu sulphide deposits. Orogenic gold deposits associated with the north-trending shear-zones will also be considered and evaluated.
Drill hole Information	<ul style="list-style-type: none"> A summary of all information material to the understanding of the exploration results including a tabulation of the following information for all Material drill holes: If the exclusion of this information is justified on the basis that the information is not Material and this exclusion does not detract from the understanding of the report, the Competent Person should clearly explain why this is the case. 	<ul style="list-style-type: none"> All Pancon drill hole information is on the public record and can be found in WAMEX reports A21081 (1986-1987), A23847 (1987-1988), A28018 (1988-1989) and A33863 (1990-1991).
Data aggregation methods	<ul style="list-style-type: none"> In reporting Exploration Results, weighting averaging techniques, maximum and/or minimum grade truncations (e.g. cutting of high grades) and cut-off grades are usually Material and should be stated. Where aggregate intercepts incorporate short lengths of high-grade results and longer lengths of low-grade results, the procedure 	<ul style="list-style-type: none"> Carnavale is not aware of any new information or data that materially affects the information in this announcement. Carnavale has no reason to question the accuracy or veracity of the information reported by Pancon. Pancon's chosen analytical techniques for Pt, Pd, Rh, Ru, Os and Ir are industry best-practice: fire assay (lead collection) ICP/MS for Pt and Pd, and fire assay (nickel sulphide collection) ICP/MS for Pt, Pd, Rh, Ru, Os and

Criteria	JORC Code explanation	Commentary
	<p><i>used for such aggregation should be stated and some typical examples of such aggregations should be shown in detail.</i></p> <ul style="list-style-type: none"> <i>The assumptions used for any reporting of metal equivalent values should be clearly stated.</i> 	<p>Ir.</p> <ul style="list-style-type: none"> No data has been aggregated in the reporting of the historical exploration results. No metal equivalents have been used.
Relationship between mineralisation widths and intercept lengths	<ul style="list-style-type: none"> <i>These relationships are particularly important in the reporting of Exploration Results.</i> <i>If the geometry of the mineralisation with respect to the drill hole angle is known, its nature should be reported.</i> <i>If it is not known and only the down hole lengths are reported, there should be a clear statement to this effect (e.g. 'down hole length, true width not known').</i> 	<ul style="list-style-type: none"> The historical drilling by Pancon was reconnaissance in nature and designed to test Cu-Ni-Pt-Pd soil anomalies in prospective mafic and ultramafic igneous rocks of the Windimurra Igneous Complex. The geology (lithological associations, metal associations, fractionation sequences and fractionation reversals) has been determined to be consistent with that of a large, potentially mineralised (Cu-Ni-PGE), mafic-ultramafic magmatic system. The initial and only phase of drilling (Pancon, 1987) was designed to investigate the potential for Ni-Cu-Pt-Pd magmatic sulphide mineralisation to be present beneath the soil anomalies, and this was confirmed by Pancon. The absence of historical ground electrical surveys (EM, IP) has left the potential for untested, subcropping or blind, more massive accumulations of Ni-Cu-Pt-Pd sulphide to be present within the project area.
Diagrams	<ul style="list-style-type: none"> <i>Appropriate maps and sections (with scales) and tabulations of intercepts should be included for any significant discovery being reported. These should include, but not be limited to a plan view of drill hole collar locations and appropriate sectional views.</i> 	<ul style="list-style-type: none"> All diagrams are designed to give the reader an accurate and comprehensive overview of the project location, work-programs (completed and planned) and discovery potential as new targets are defined (e.g. geophysical anomalies).
Balanced reporting	<ul style="list-style-type: none"> <i>Where comprehensive reporting of all Exploration Results is not practicable, representative reporting of both low and high grades and/or widths should be practiced to avoid misleading reporting of Exploration Results.</i> 	<ul style="list-style-type: none"> Comprehensive and detailed exploration reporting by Pancon is available on the public record and can be found in WAMEX reports A21081 (1986-1987), A23847 (1987-1988), A28018 (1988-1989) and A33863 (1990-1991).
Other substantive exploration data	<ul style="list-style-type: none"> <i>Other exploration data, if meaningful and material, should be reported including (but not limited to): geological observations; geophysical survey results; geochemical survey results; bulk samples – size and method of treatment; metallurgical test results; bulk density, groundwater, geotechnical and rock characteristics; potential deleterious or contaminating substances.</i> 	<ul style="list-style-type: none"> Ground-based Electrical Geophysical Surveys (IP, EM): none ever completed. Aeromagnetism: The WA Geological Survey state aeromagnetic data, which was downloaded from the government Data Centre, has been re-imaged to enhance features that are relevant to the geology and style of mineralisation being investigated. Flight line spacing for this data is 200m.
Further work	<ul style="list-style-type: none"> <i>The nature and scale of planned</i> 	<ul style="list-style-type: none"> Carnavale plans to survey the area with high-

Criteria	JORC Code explanation	Commentary
	<p><i>further work (e.g. tests for lateral extensions or depth extensions or large-scale step-out drilling).</i></p> <ul style="list-style-type: none"> <i>Diagrams clearly highlighting the areas of possible extensions, including the main geological interpretations and future drilling areas, provided this information is not commercially sensitive.</i> 	<p>resolution helicopter-borne EM, and to reconstruct digital data files from the analogue plots of soil geochemistry (histogram line profiles) reported by Pancon (A23847).</p> <ul style="list-style-type: none"> Both sources of data will then be used to establish priority areas for follow-up ground EM surveys and the drill testing of the modelled conductive plates if considered robust investment opportunities.