

ASX ANNOUNCEMENT

14 April 2021

Drilling Commences at Camel Creek

Great Northern Minerals Limited (“**Great Northern Minerals**” or the “**Company**”) (**ASX: GNM**) is pleased to advise shareholders that drilling at Camel Creek has commenced following the recent fund raising.

Two previous drilling programs completed at Camel Creek during 2020 have highlighted the potential of a significant gold system with numerous high grade drill intersections returned extending over approximately 1000 metres of strike. The known gold mineralisation as defined by previously mined shallow open pits and previous drilling extends over at least 3 kilometres and the Company has now commenced a large drilling program at Camel Creek to test the mineralisation over 2 kilometres of strike to an average depth of 120 metres.

Reverse circulation drilling on nominal 40 metre centres is planned with hole depths ranging from 80-180 metres depth with a total of 5000 metres to be drilled. The completion of the systematic drilling at Camel Creek will lead to a JORC 2012 resource estimate for the Camel Creek gold system.

The drilling is anticipated to take approximately one month to complete, with assay results due over the following month.

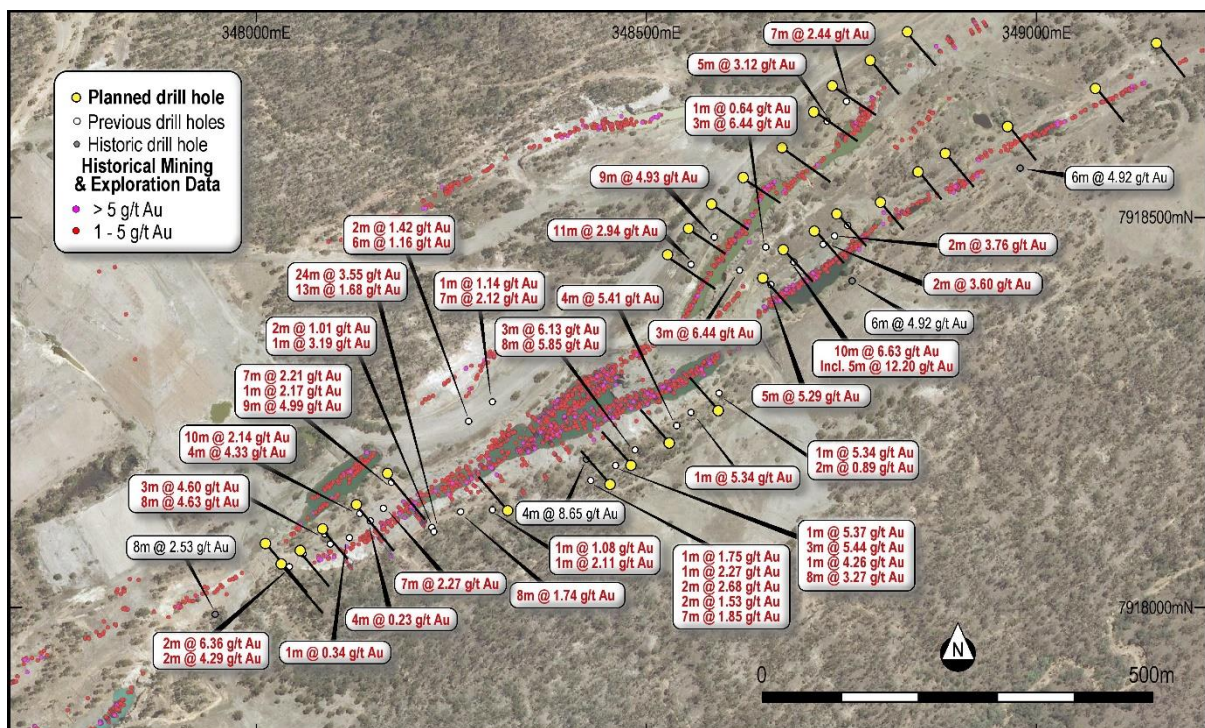


Figure 1: Previous Camel Creek drilling results and planned RC drilling

This announcement has been authorised for release to the market by the Board of Great Northern Minerals Limited.

ENDS

For more information please contact:

Managing Director
Cameron McLean
info@greatnorthernminerals.com.au

Investor Relations
Peter Taylor, NWR Communications
+61 412 036 231

About Great Northern Minerals Limited

Great Northern Minerals Limited is an ASX-listed gold focused explorer. The Company's key North Queensland Gold Projects include the Golden Cup, Camel Creek and Big Rush Gold Mines in North Queensland. The historic mines ceased operation in the 1990's after production of over 150,000 oz at an average grade of 1.91g/t Au. Great Northern Minerals aims to extend known mineralisation and develop a new gold camp in North Queensland.

Competent Persons Statement

The information in this report that relates to Exploration Results is based on information compiled under the supervision of Simon Coxhell, the Technical Director of Great Northern Minerals Limited. Mr Coxhell is a member of the Australasian Institute of Mining and Metallurgy and has sufficient experience of relevance to the styles of mineralisation and type of deposit under consideration and to the activity which he is undertaking to qualify as a Competent Person as defined in the 2012 Edition of the "Australasian Code for Reporting of Exploration Results, Mineral Resources and Ore Reserves." Mr Coxhell consents to the inclusion in this report of the matters based on his information in the form and context in which they appear.