



STOCKHEAD VIRTUAL GOLD CONFERENCE - APRIL 2021

DISCLAIMER

This presentation is not a prospectus nor an offer or inducement to subscribe for shares in Moho Resources Ltd (Moho) and has not been lodged with the Australian Securities and Investments Commission. Except for any liability which cannot be excluded by law, Moho and its affiliates expressly disclaim and accept no responsibility or liability (including liability for negligence) for the contents of this document.

This presentation has been prepared for the consideration of interested parties in Moho and does not carry any right of publication or disclosure to any other party. This presentation is incomplete without reference to and should be viewed solely in conjunction with the oral briefing provided by Moho's management. Neither this presentation nor its content may be used for any other purpose without prior written consent of Moho.

The information contained in this presentation is of general nature and is not intended to address the circumstances of any particular individual or entity. Although we endeavour to provide accurate and timely information, there can be no guarantee that such information is accurate as of the date it is received or that it will continue to be accurate in the future. No one should act upon such information without appropriate professional advice after a thorough examination of the particular situation.

This document may contain forward-looking statements. Investors are cautioned that forward-looking statements are not guarantees of future performance and accordingly investors are cautioned not to put undue reliance on forward-looking statements due to the inherent uncertainty therein.

This presentation is authorised for release by the board.

WHY INVEST?

- ✓ Exploring for company-making gold and nickel discoveries in Australia
- ✓ Highly experienced board, management and technical consultants to unlock resources
- ✓ Opportunity to use cashflow from East Sampson Dam gold production to fund future expansion
- ✓ JV-Agreements in place with major ASX-listed miner
- ✓ Mining-friendly, tier-1 destinations with projects in WA and QLD
- ✓ Active exploration underway with strong newsflow



BOARD & TECHNICAL CONSULTANTS



Non - Executive Chairman - Terry Streeter

Extensive experience in funding, listing and overseeing junior explorers in all exploration and economic cycles and has served in various roles in the nickel sulphide industry for over 30 years.

Previous Director of Jubilee Mines
Non-Executive Director of Western Areas & Fox Resources and additional mining interests.



Commercial Director - Ralph Winter
BCom - Grad Dip Prof Acct, GAICD

Specialising incorporate affairs & finance, marketing & promotion and business development in both exploration and development companies (Trafford, Ironclad, Robust Resources, Mineral Products).

Director of Breast Cancer Care WA and Owner of Australian Remote Assistance



Managing Director - Shane Sadleir
Geoscientist BSc (Hons), FAusIMM

Extensive experience in exploration, mine geology, research, environmental protection, IPOs.

Founding director of Bannerman, Trafford, Ironclad, Scotgold, Athena and NED of Robust



Non - Executive Director - Adrian Larking
Geologist / Lawyer, AMEC Councillor
BSc Hons, MSc, DIC, LLB, GDLP, FAusIMM, MAIG, MCET

Extensive experience in exploration, mine geology and commerce (Kambalda Nickel Operations, Olympic Dam Operations, various senior management roles in WMC)

Experience as director of listed and unlisted resource companies.

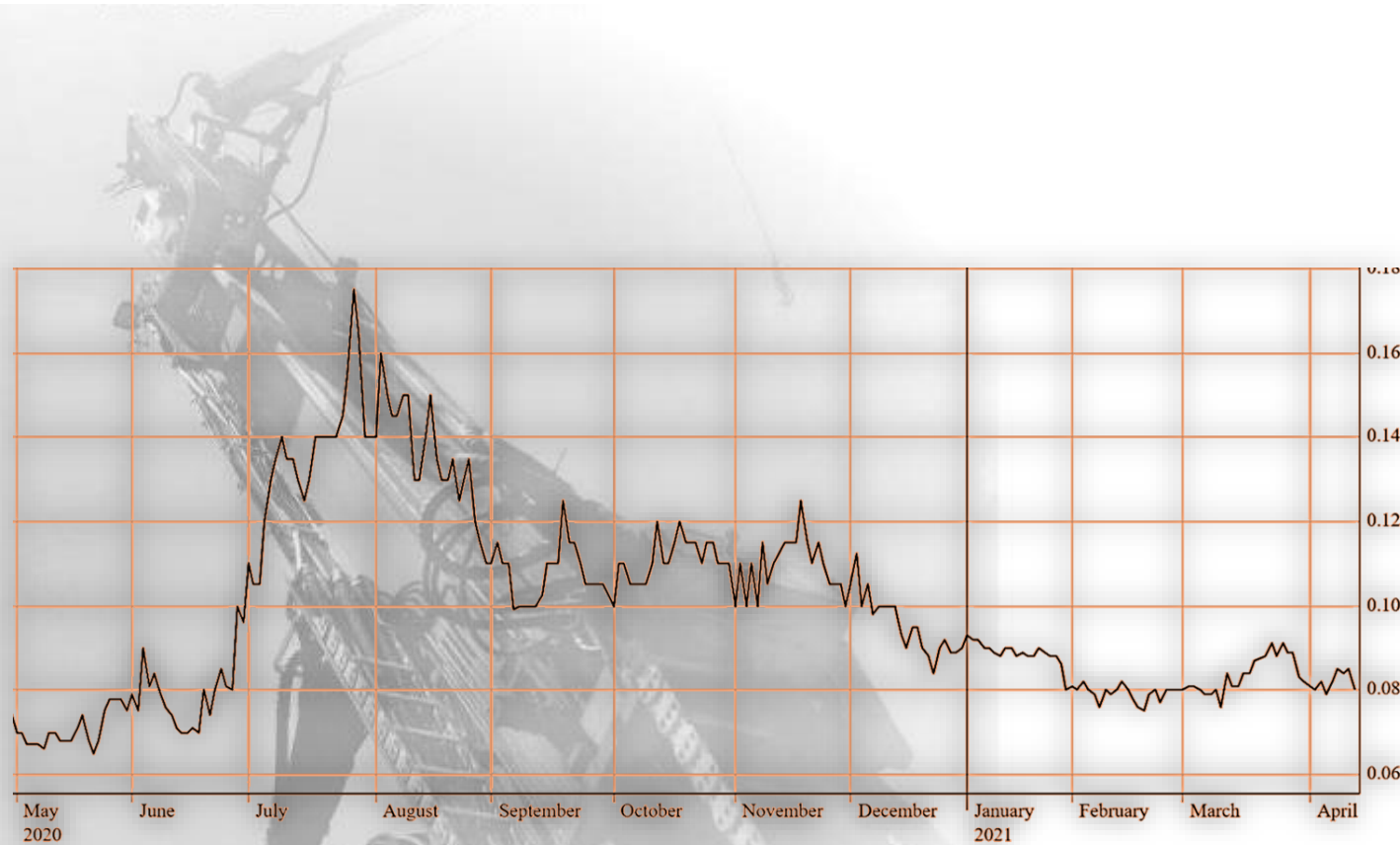
Technical Consultants:

Jon Hronsky (geologist) - Chairman of world-reknown Centre for Exploration Targeting and Australian Geoscience Council, Adjunct Professor at UWA and Macquarie University

Kim Frankcombe (geophysicist - Principal of ExploreGeo Pty Ltd ; previously senior consultant of Southern Geoscience geophysicists - Extensive expertise in geophysics, including targeting of gold and base metal deposits

Richard Carver (geochemist) - 30 years as geochemist with WMC working in a variety of roles including Chief Geochemist. Experience in a wide range of commodities with particular expertise in gold, nickel and porphyry copper.

CORPORATE OVERVIEW



Capital Structure

On Issue #	103M** (100%)
Share Price as at 14/4/21	\$0.085
Options on Issue*	47.8M
Market Cap #	~ \$8.2M (at 8.5cps)
Cash # as at 1/4/21	~\$1.2M
Enterprise Value #	~\$7.0M
Top 20 Holders	~33%

* Includes 27.6M listed options (MOHO) with \$0.25 exercise price and 9/7/23 expiry, and 20.2M unlisted options with exercise prices ranging from \$0.19 to \$0.50 per share

EXPLORING FOR COMPANY MAKERS

Empress Springs Gold Project

- Large belt-scale potential for tier-1 gold deposits in Nth Qld
- +90km anomaly falls within the top 1% of ground water gold anomalism nationally



Silver Swan North Gold/Nickel Project

- Exposure to Gold & Nickel in prospective ground holdings around Poseidon's Black Swan Nickel Operations
- Advancing East Sampson Dam Gold Project for early cashflow potential

Silver Swan North Au/Ni
Burracoppin Au



Burracoppin Gold Project

- Underexplored greenstone belt in WA wheatbelt only ~20km from Ramelius' Edna May gold mine



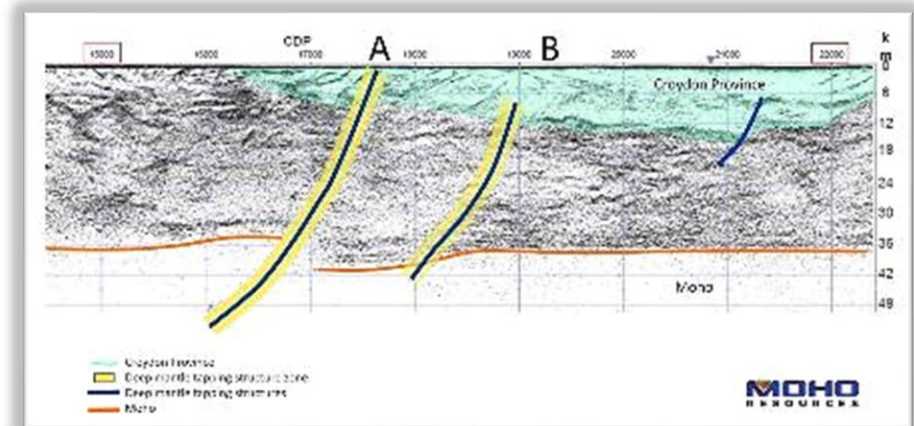
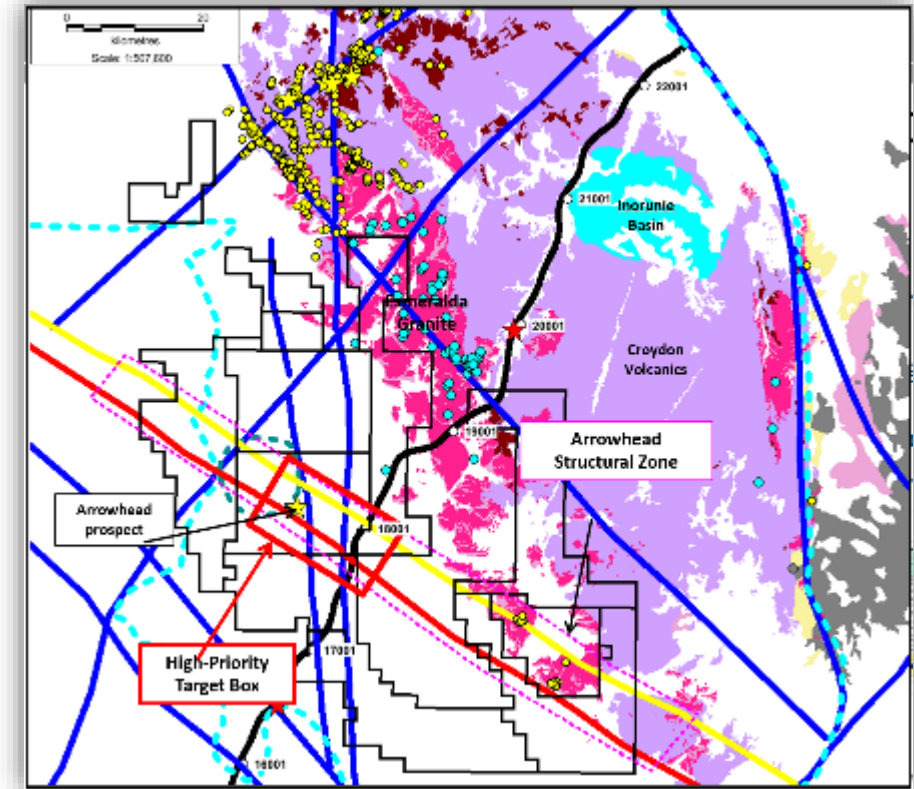


EMPRESS SPRINGS PROJECT

EMPRESS SPRINGS (QLD) – Au

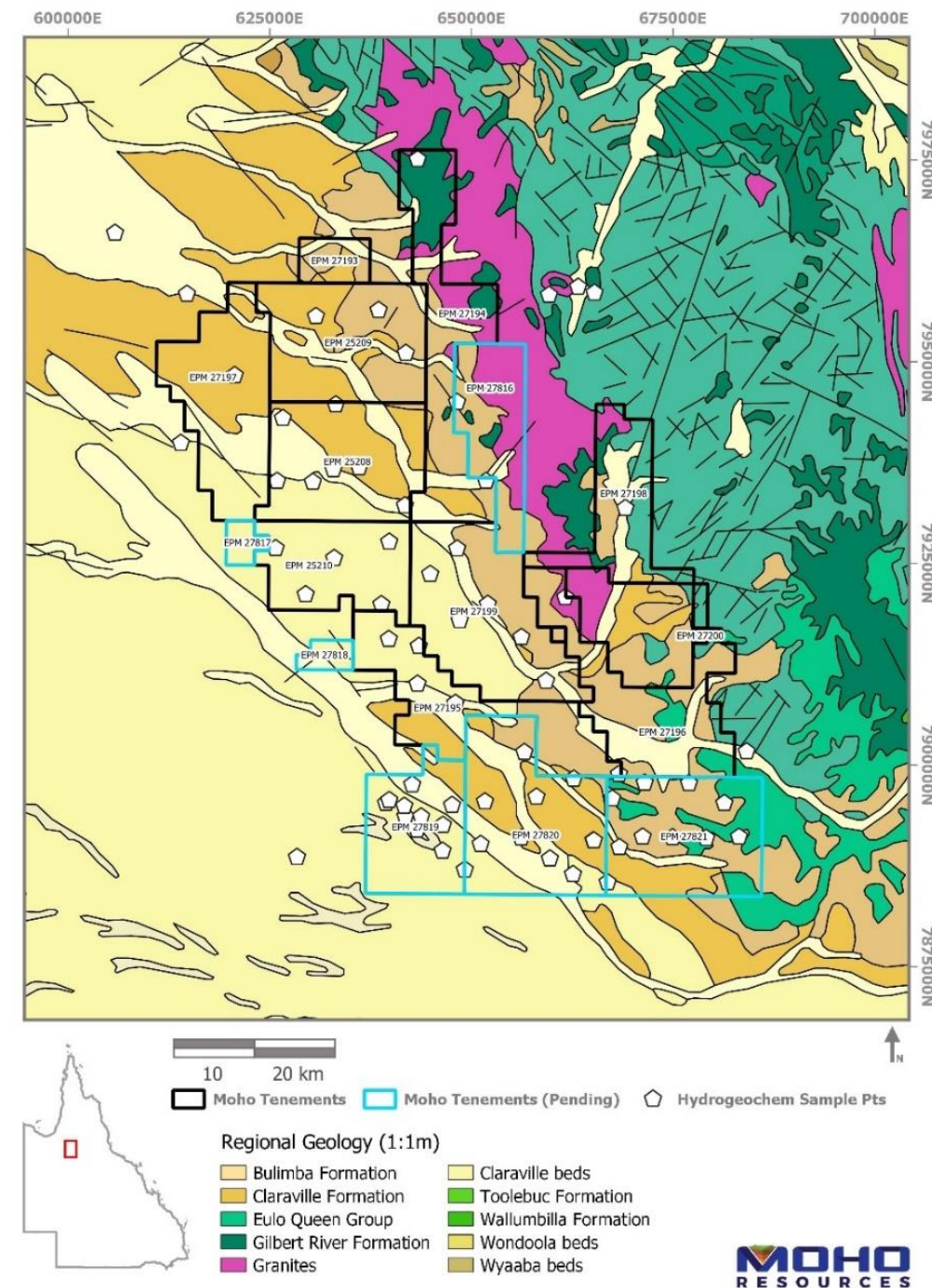
A POTENTIAL COMPANY MAKER

- Exploration for giant gold deposits in virgin area
- Farm-in with IGO Ltd – 70% interest soon to be earned by Moho
- 20 km south of Croydon Goldfield (1.2M oz historic Au production)
- Aircore drilling by Moho in 2018-19 discovered 3 separate mineralised areas under shallow cover
- Limited follow-up RC drilling 2019:
 - ESMH0001: 22m @ 1.0g/t Au from 46-68m
 - ESMH0024: 24m @ 0.7g/t Au from 46-70m
- Moho holds most of the prospective ground (~3,400km²)



ANOMALOUS +90km GOLD ZONE IDENTIFIED

- Novel hydrogeochemical sampling study conducted across regional boreholes in partnership with CSIRO*
- +90km extent returned gold anomalism and porphyry signatures
- Anomaly falls within the top 1% of ground water gold anomalism nationally
- Confirmation of New mineral province discovery on par with scale of Fraser Range mineral province discovery
- Moho expands footprint to include new areas of interest
- Results to feed into future exploration activities



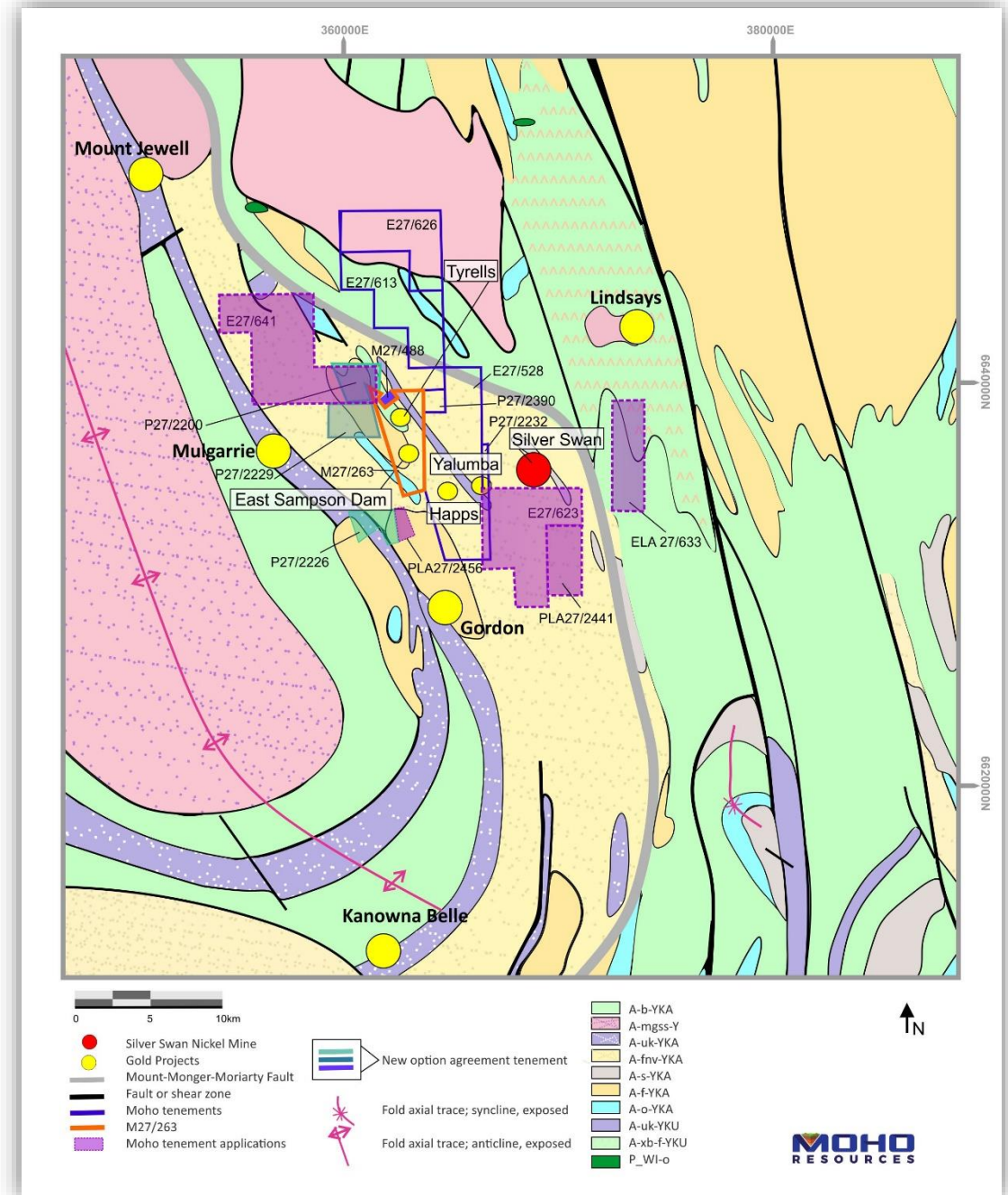
* See ASX Announcement dated 23 March 2021

A yellow mining truck is shown in a desert environment. The truck has a large yellow hydraulic cylinder with a red fire extinguisher attached to it. A sign on the cylinder reads "HYDRAULIC OIL". The truck is parked on a dirt road, and the background shows a clear blue sky and some desert vegetation.

SILVER SWAN NORTH PROJECT

SILVER SWAN NORTH GOLD/NICKEL PROJECT

- Extensive land holding ~112km² (100% owned), ~55km from Kalgoorlie, WA
- Underexplored tenure on granted mining lease with no historical nickel exploration on E27/613
- High grade gold intersections at East Sampson Dam prospect
- Approximately 3.3km long, magnetic unit coincident with a zone of ultramafic rocks has been identified
- Close proximity to Black Swan nickel plant, high grade Silver Swan Nickel Mine, and recent high grade Golden Swan nickel discovery by Poseidon Nickel (POS)
- Potential for early stage cashflow



HIGH GRADE RESULTS AT FEB 21*

RESOURCE DEFINITION RC DRILLING:

- SSMH0102: **2m @ 4.48 g/t Au** from 100m incl. **1m @ 8.31 g/t Au** from 100m
- SSMH0105: **6m @ 2.3 g/t Au** from 105m incl. **1m @ 3.63 g/t Au** from 105m, incl. **1m @ 6.80 g/t Au** from 110m
- SSMH0109: **2m @ 2.98 g/t Au** from 58m incl. **1m @ 5.26 g/t Au** from 58m
- SSMH0110: **2m @ 2.61 g/t Au** from 61m incl. **1m @ 8.27 g/t Au** from 62m

HIGH GRADE RESULTS AT NOV 20 & JAN 21**

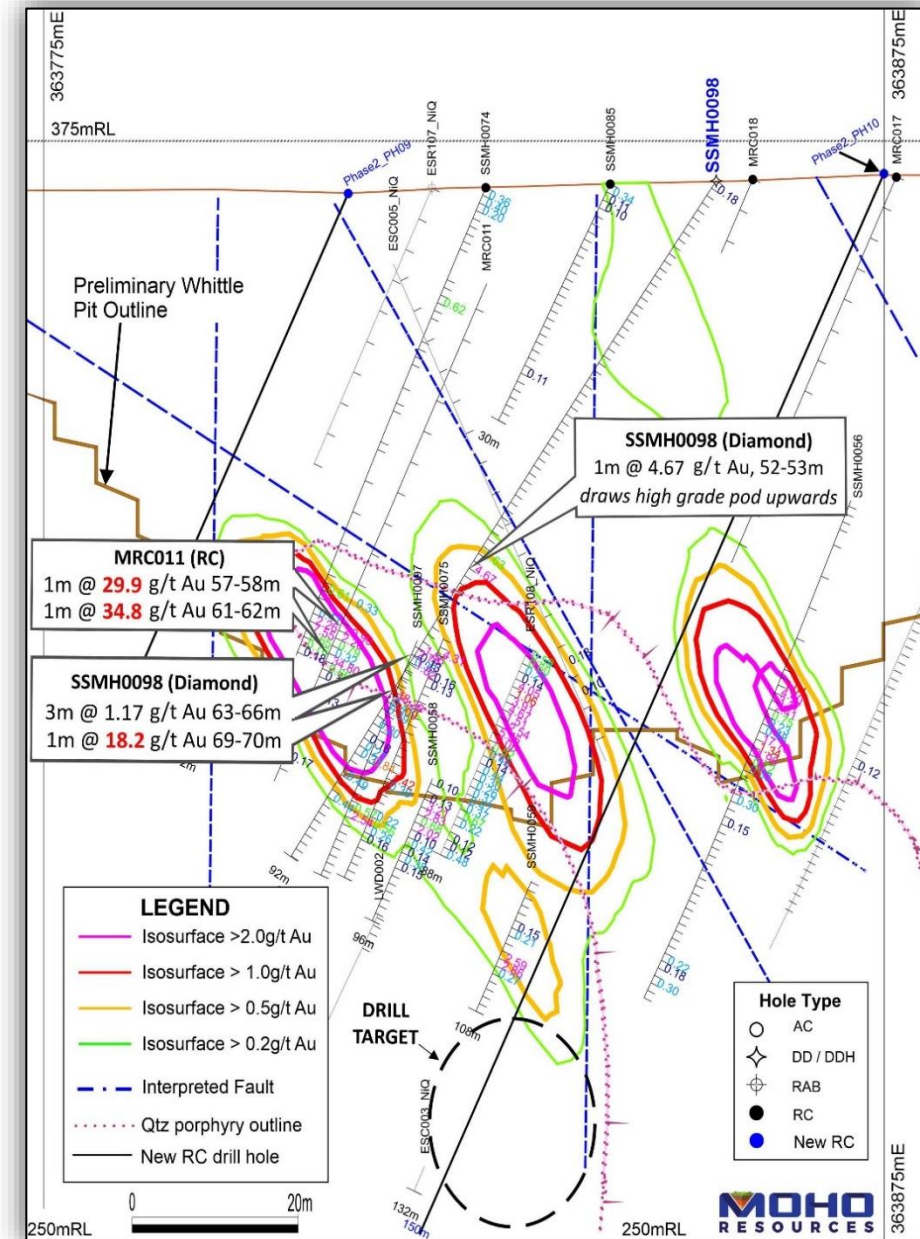
RESOURCE DEFINITION DIAMOND DRILLING:

- SSMH0095: **2m @ 18.0 g/t Au** from 105m, incl. **1m @ 34.8 g/t Au** from 106m
- SSMH0097: **6m @ 5.63 g/t Au** from 18m, incl. **1m @ 16.2 g/t Au** from 19m & **1m @ 13.5 g/t Au** from 23m
- SSMH0098: **1m @ 4.67 g/t Au** from 52m, **3m @ 1.17 g/t Au** from 63m & **1m @ 18.2 g/t Au** from 69m
- SSMH0100: **7m @ 4.78 g/t Au** from 51m incl. **1m @ 22.2 g/t Au** from 53m, **5m @ 8.01 g/t Au** from 59m incl. **1m @ 23.5 g/t Au** from 60m, and **2m @ 6.91 g/t Au** from 77m

HIGH GRADE RESULTS AT FEB 20**

REVERSE CIRCULATION EXPLORATION DRILLING:

- SSMH0051: **15m @ 4.71 g/t Au** from 88m, Incl. **3m @ 15.18 g/t Au** from 100m
- SSMH0062: **5m @ 10.36 g/t Au** from 59m, Incl. **2m @ 24.61 g/t Au** from 56m
- SSMH0075: **9m @ 4.28 g/t Au** from 19m, Incl. **3m @ 3.37 g/t Au** from 19m
and **1m @ 24.3 g/t Au** from 25m
- SSMH0056: **11m @ 3.11 g/t Au** from 65m, Incl. **1m @ 17.7 g/t Au** from 72m
- SSMH0063: **2m @ 17.0 g/t Au** from 73m
- SSMH0068: **2m @ 5.40 g/t Au** from 88m, Incl. **1m @ 10.30 g/t Au** from 88m
- SSMH0077: **2m @ 12.33 g/t Au** from 88m, Incl. **1m @ 22.8 g/t Au** at 89m (EOH)



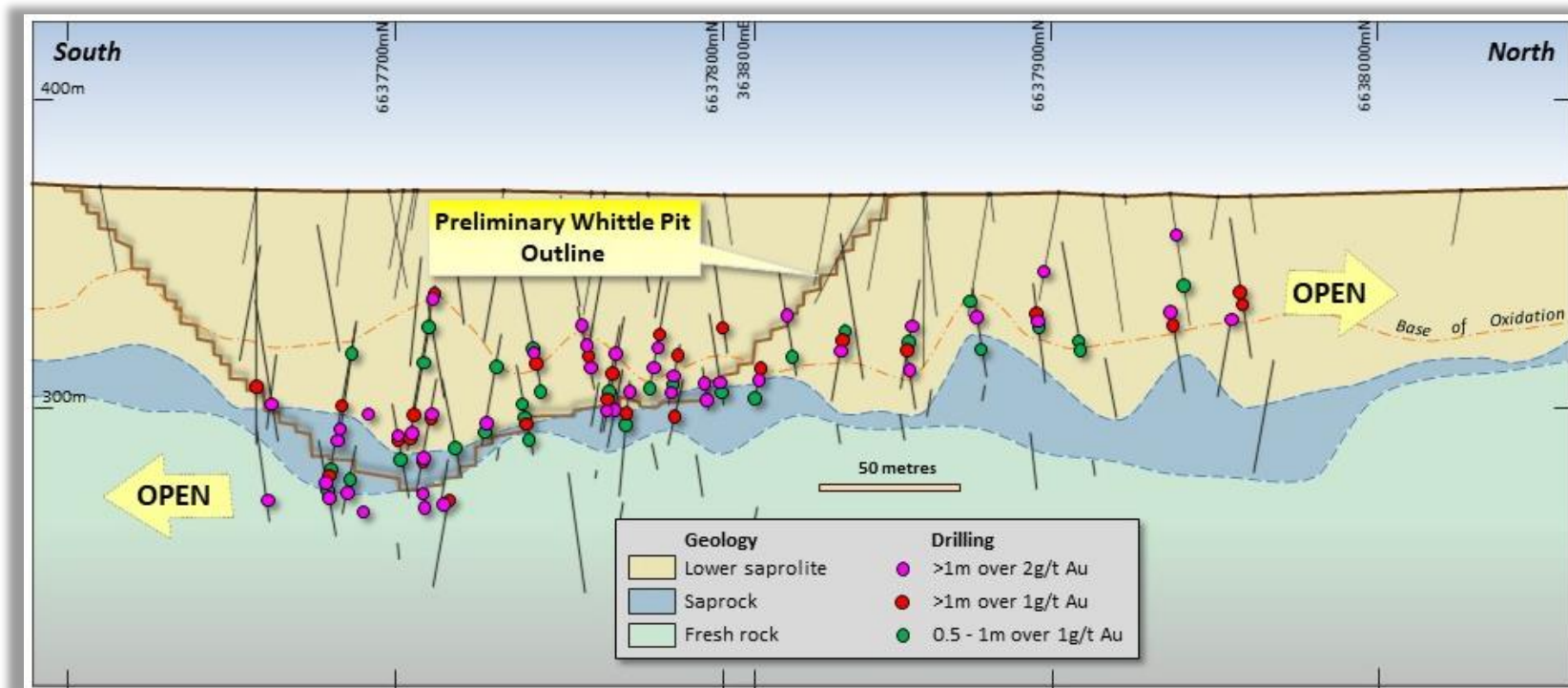
* Results from ASX announcement by Moho, 2 February 2021: "Progress report - East Sampson Dam gold prospect"

**Results from ASX announcement by Moho, 19 November 2020: "High grade diamond drill results - East Sampson Dam gold prospect" & 12 January 2021 "High grade diamond drill results - East Sampson Dam prospect"

**Results from ASX announcement by Moho, 11 February 2020: "Significant gold assays at East Sampson Dam prospect"

EAST SAMPSON DAM EXPLORATION UPSIDE

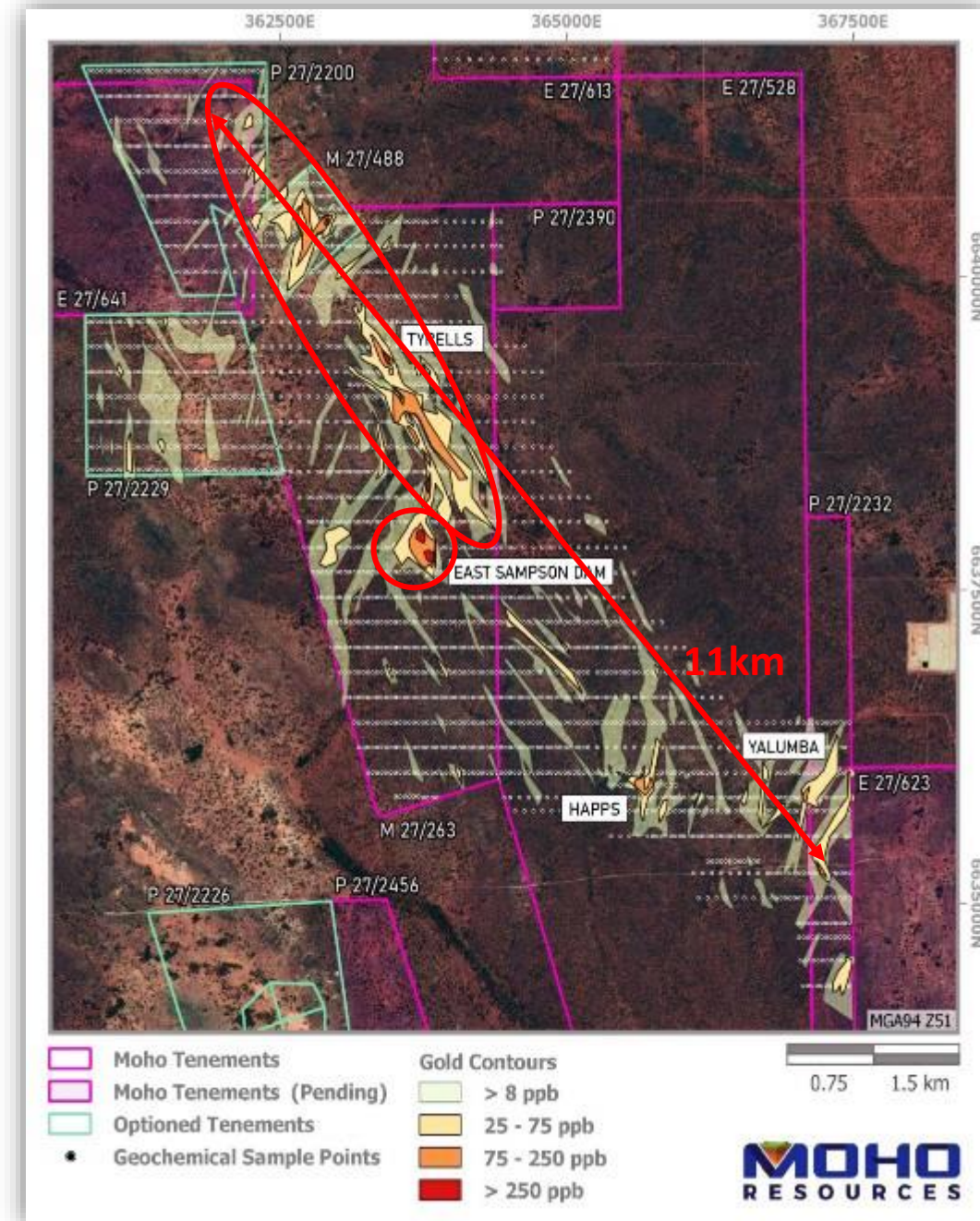
- Latest RC drilling results indicate potential extensions
- Mineralised zone open north and south
- Results include: SSMH0139: 6m @ 11.03 g/t Au from 62m*
- Results add to structural and lithological model, confirming geological understanding



* See ASX Announcement dated 30 March 2021

EXPLORATION PRIORITISED TOWARDS EARLY GOLD PRODUCTION

- Infill RC and diamond drill programs completed for maiden JORC Resource and Scoping Study at East Sampson Dam
- Surface sampling confirms semi-continuous gold anomalism over 11km within Moho's granted tenements
- Drilling confirms further mineralised extensions
- Flora/Fauna & Aboriginal heritage completed with no issues
- Potential toll milling arrangements under investigation
- Maiden JORC Resource targeted for **Q2 2021**
- Scoping Study targeted for end **Q2 2021**
- Aircore drilling to test gold auger anomalies on M27/263 over 2.5km targeted **Q2 2021**

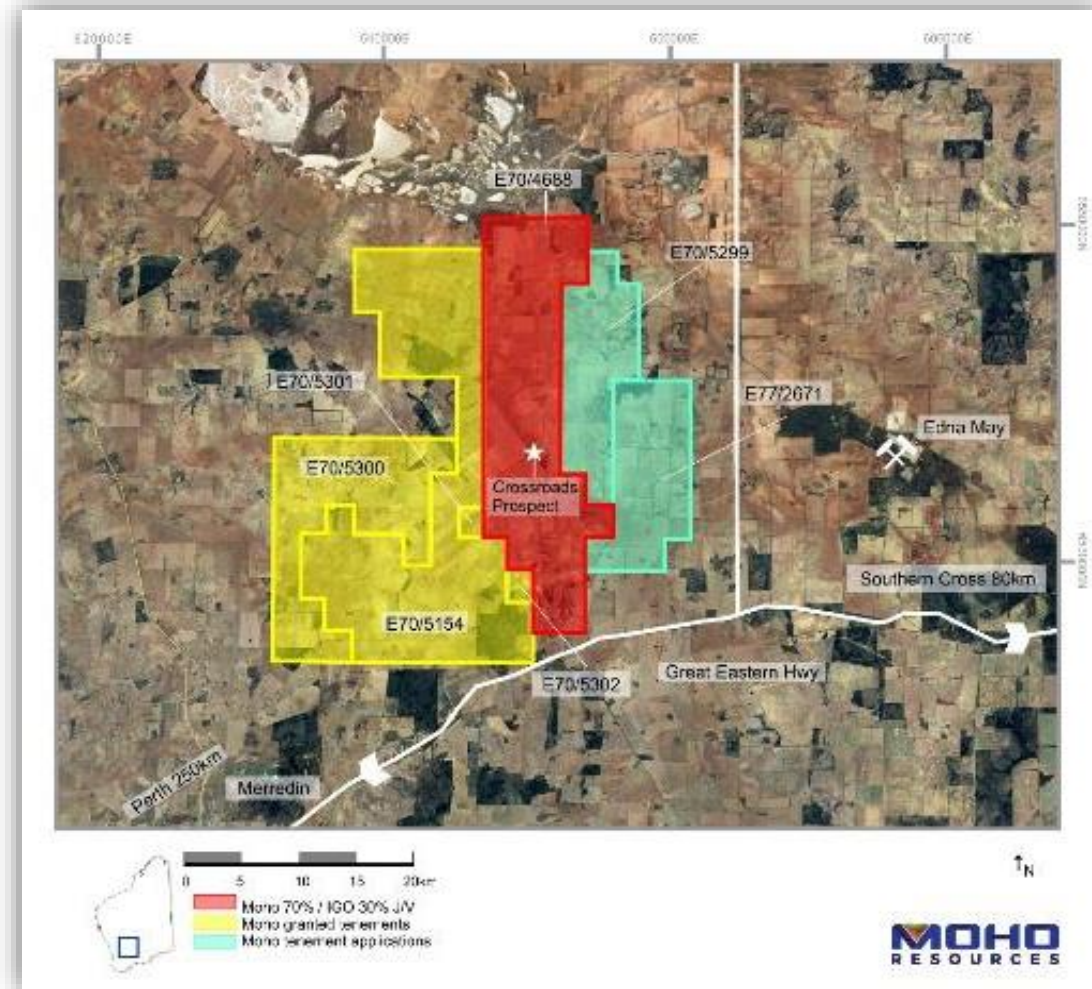


A yellow hydraulic excavator is the central focus of the image. It is parked on a dirt surface under a clear blue sky. A red fire extinguisher is mounted on the side of the yellow body. A sign on the side of the excavator reads "HYDRAULIC OIL". The excavator's arm and bucket are visible on the right side of the frame. The background shows a flat, arid landscape with some sparse vegetation.

BURRACOPPIN PROJECT

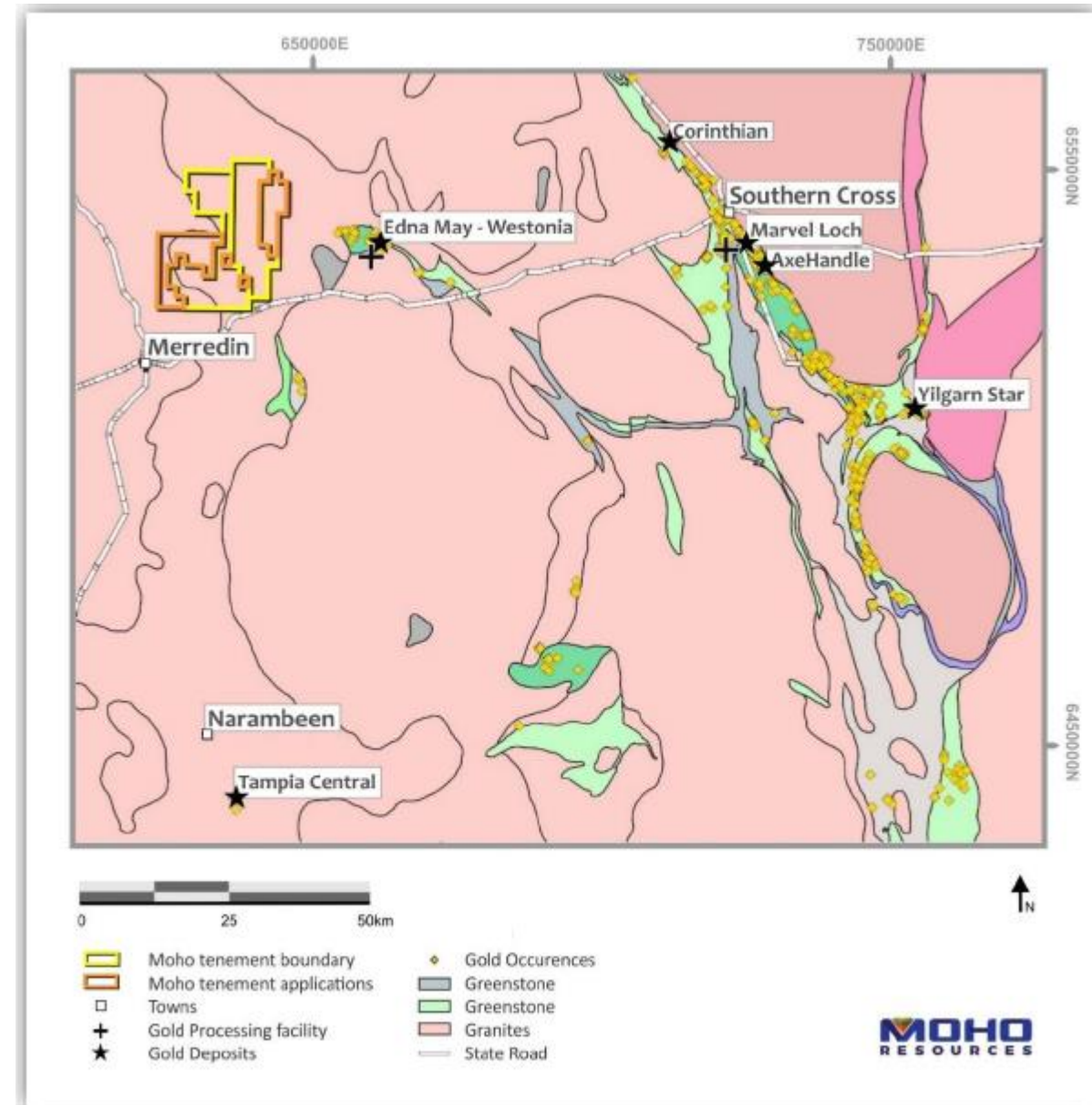
BURRACOPPIN (WA) - Au NEW DISCOVERY IN GREENSTONE BELT

- Moho (70%) in JV with IGO Ltd; 100% Moho owned tenure on adjacent ground
- In Southern Cross Greenstone Belt ~20km west of Edna May Mine
- Gold/silver mineralisation discovered by Moho in bedrock
- On structural trend to Tampia gold deposit (owned by Explaurum prior to takeover by Ramelius Resources)



BURRACOPPIN (WA) - AU INITIAL RESULTS HIGHLY ENCOURAGING AT CROSSROADS PROSPECT

- Bedrock gold intersected in maiden AC drilling in early 2020
- Open to S, E and at depth; peak values of 0.61 g/t Au and 5.53 g/t Ag
- Located 20km west of Edna May gold mine (Ramelius)
- Awarded co-funded drilling grant (EIS) from WA government for \$147,500
- **Follow-up RC drilling completed – Results Imminent**
- **Follow-up Diamond drilling planned – May 21**



Moho Timeline 2021



Diamond Drilling East Sampson Dam

Remaining 3 holes completed
Results received Dec 2020

Hydrogeochem Results Mar 2021

RC Drilling East Sampson Dam
Results expected Mar 2021

RC & Diamond Drilling Burracoppin
25 holes (approx 3,000m)
Results expected April 2021
3 DH (approx 600m) start May 2021
Results expected June 2021

Preliminary JORC Resource East
Sampson Dam

Expected May 2021

Scoping Study East Sampson Dam
Expected June 2021

Extension AC drilling Silver Swan North

Planned for Q2 2021
Results expected Q3 2021

East Sampson Dam Toll Treatment Agreement

Expected Q3



admin@mohoresources.com.au

+61 8 9481 0389

Level 1/46 Salvado Rd

Wembley, 6014

Australia