

6 May 2021

## Tietto's infill drilling on track to grow open pit gold resources at APG

---

### Highlights:

- Tietto's infill drilling continues to add **multiple open-pitabile gold** intercepts at APG, part of its 3.02Moz Abujar Gold Project, with latest results including:
  - **15m @ 2.25 g/t Au** from 123m incl. **1m @ 25.53 g/t Au** (ZDD473)
  - **13m @ 1.61 g/t Au** from 47m incl. **1m @ 16 g/t Au** (ZDD453)
  - **17m @ 0.95 g/t Au** from 15m incl. **6m @ 1.71 g/t Au** (ZDD468)
  - **15m @ 0.96 g/t Au** from 16m incl. **2m @ 2.82 g/t Au** (ZDD477)
- Tietto has extended infill diamond drilling program cut-off to 24 May 2021 and now expects to deliver the Abujar Mineral Resource update by end of the June quarter
- Tietto has completed 277 holes for 48,453m across Abujar since the drilling cut-off date of the October 2020 resource update – drill teams are on track to complete more than 50,000m by the next resource cut-off date
- At APG, Tietto has completed 45 holes for 7,337m and it expects another 2,500m will be completed by the cut-off for inclusion in the resource model update
- Tietto infill diamond drill program is targeting conversion of Inferred Resources to Indicated Resources at **AG** and **APG**. The new updated resource model will be used for Ore Reserve studies in the upcoming DFS (due Q3 CY2021)
- Tietto expects recent drilling will underpin a material upgrade to Abujar Ore Reserves of **15.7Mt @ 1.7g/t Au for 0.86Moz** (maiden open pit) within **AG 22.9Mt @ 1.5g/t Au for 1.12Moz<sup>1</sup>** Mining Inventory and open-pitabile Inferred Resources identified at **APG (8.1Mt @ 0.8g/t Au for 0.2Moz)** within the **Expanded Project** study
- Assay results pending with more than **5,400** Abujar core samples at the laboratory
- Tietto's fleet of six diamond rigs are drilling ~11,000m a month to drive Abujar's rapid resource growth at low discovery cost per ounce in 2021
- Tietto is rapidly advancing Abujar with June quarter work program to include front end engineering and design (FEED), and commencement of site and camp construction
- Tietto is well funded to drive Abujar development, with ~\$52M cash at bank.

---

<sup>1</sup> ASX Announcement dated 6 April 2021

West African gold explorer and developer Tietto Minerals Limited (ASX: TIE) (**Tietto** or the **Company**) is pleased to report further high-grade gold results from infill drilling at the Abujar-Pischon-Golikro (**APG**) deposit, part of its 3.02Moz Abujar Gold Project in Côte d'Ivoire, West Africa, which is on track to be West Africa's next gold mine.

The latest results from **APG** reported in this release are among those for inclusion in the next Abujar Mineral Resource estimate update, due late Q2 CY2021.

Tietto Managing Director, Dr Caigen Wang, said: *"We have more strong numbers coming out of our infill drilling at **APG**, with the latest round of assay results delivering shallow open-pitatable gold intercepts. On the back of these continuing good assay results from **APG** we have decided to extend the drilling cut-off to 24 May 2021 to incorporate these into the next Abujar resource model update which is expected to be delivered by the end of the current quarter.*

*"I think it is fair to say that **APG** has naturally been overshadowed by **AG core**. However, our **Expanded Project** delivered with the PFS, demonstrated the potential of **APG** to deliver shallow low strip open-pitatable feedstock for an established mill and mining operation at **AG**.*

*"During the next phase of work planned in the DFS, our mining team will assess the opportunity to build on the conservative assumptions used in the PFS, such as the fresh processing costs and mill throughput rates.*

*"This is an important point as unlike **AG**, **APG** has a 40-50m oxide/transition blanket from surface with potential to deliver higher mill throughput and lower processing unit costs compared to the fresh material parameters used in the study. We will examine this closely during the DFS mining studies and will involve new open pit optimisation with the updated resource model and detailed mine mill scheduling.*

*"I expect that once we combine the updated Abujar Mineral Resource with the enhancements identified in the PFS, we will see a material increase in our Ore Reserves at Abujar following new mine optimisation and mine scheduling studies.*

*"Once the infill program is completed we intend to use our diamond drill rigs to test the multitude of exploration targets around our proposed mill at Abujar to drive future resource growth.*

*"On the development front, our recent initiatives and work program demonstrate our progress towards delivery of our fully funded Abujar DFS in Q3 2021 and more broadly, positioning Abujar as West Africa's next gold mine."*

## Abujar infill diamond drilling program

Tietto has been systematically diamond drill testing Inferred Mineral Resources at AG and APG since 15 September 2020, which was the drilling cut-off date used for the October 2020 Mineral Resource model<sup>2</sup>.

Tietto's drilling teams have completed 277 holes for 48,453m across a range of deposits and prospect at Abujar (**Table 1**). At APG, teams have completed 45 holes for 7,337m and it is expected another 2,500m will be completed by 24 May 2021 for inclusion in the resource model update. Tietto now plans to deliver this by the end of the current quarter.

*Table 1: New diamond drilling completed at Abujar since 15 September 2020*

Deposit/Prospect	Holes	Metres	Ave Depth	Max Depth
AG	122	30,763	252	720
<b>APG</b>	<b>45</b>	<b>7,337</b>	<b>163</b>	<b>362</b>
GGL	21	4,355	207	282
AG WEST	8	1,491	186	275
KOFLANKRO	9	1,718	191	210
PGL	11	2,018	183	293
ZOUKPANGBEU	4	772	193	282
<b>Total</b>	<b>220</b>	<b>48,453</b>	<b>220</b>	<b>720</b>

## Infill drilling – APG Resource

This release relates to 17 diamond holes (2,411m) completed as part of an infill drilling program (45 diamond holes (7,337m) at APG designed to increase confidence in current mineral resource estimates at Abujar (i.e. upgrading Inferred material to Indicated).

Results for 12 holes are reported in this release, with assays pending for the remainder. Significant intersections from the latest batch of assays received for 1m diamond drill samples are summarised in **Table 2**.

*Table 2: Significant Intersections<sup>3</sup>*

Hole id	Depth from	Depth to	Length	g/t Au	Includes <sup>4</sup>
ZDD453	47	60	13	1.61	<b>1m @ 16 g/t Au</b>
ZDD465	126	140	14	0.58	<b>1m @ 3.29 g/t Au</b>
ZDD465	155	167	12	1.08	<b>2m @ 3.29 g/t Au</b>
ZDD468	15	32	17	0.95	<b>6m @ 1.71 g/t Au</b>
ZDD468	37	46	9	0.86	<b>3m @ 1.25 g/t Au</b>
ZDD469	7	17	10	0.55	<b>2m @ 1.1 g/t Au</b>
ZDD469	32	55	23	0.64	<b>6m @ 1.03 g/t Au</b>

<sup>2</sup> ASX Announcement dated 26 October 2020

<sup>3</sup> 0.4 g/t Au cut off used with max 3m internal dilution and no top cut applied

<sup>4</sup> 1.0 g/t Au cut off used with max 3m internal dilution and no top cut applied

Hole id	Depth from	Depth to	Length	g/t Au	Includes <sup>4</sup>
ZDD471	16	27	11	0.57	1m @ 1.26 g/t Au
ZDD471	68	76	8	0.72	4m @ 1.00 g/t Au
ZDD473	53	55	2	3.65	<b>1m @ 6.67 g/t Au</b>
ZDD473	123	138	<b>15</b>	<b>2.25</b>	<b>1m @ 25.53 g/t Au</b>
ZDD475	39	47	8	0.73	1m @ 1.66 g/t Au
ZDD475	54	65	11	0.98	<b>5m @ 1.31 g/t Au</b>
ZDD477	16	31	15	0.96	<b>2m @ 2.82 g/t Au</b>
ZDD477	70	80	10	0.95	<b>5m @ 1.29 g/t Au</b>
ZDD480	95	114	19	0.52	1m @ 1.4 g/t Au
ZDD481	63	76	13	0.58	1m @ 2.43 g/t Au
ZDD482	60	68	8	0.83	2m @ 2.07 g/t Au
ZDD487	41	51	10	0.51	1m @ 1.97 g/t Au
ZDD487	83	92	9	0.65	4m @ 1.00 g/t Au

These new gold intercepts add to previously reported high-grade gold intercepts from infill at APG including those below (Table 3).

*Table 3: Previously Reported Significant Intersections at APG (refer ASX release 23/02/2021, 20/4/2021)*

Hole id	Depth from	Depth to	Length	g/t Au	Includes <sup>5</sup>
ZDD358	37.0	48.0	<b>11.0</b>	<b>2.17</b>	<b>4m @ 5.09 g/t Au</b>
ZDD354	304.0	313.0	<b>9.0</b>	<b>1.74</b>	<b>5m @ 2.91 g/t Au</b>
ZDD359	83.0	84.0	<b>1.0</b>	<b>12.71</b>	<b>1m @ 12.71 g/t Au</b>
ZDD349	132.0	137.0	<b>5.0</b>	<b>2.36</b>	<b>3m @ 3.57 g/t Au</b>
ZDD357	124.0	131.0	<b>7.0</b>	<b>1.25</b>	<b>6m @ 1.32 g/t Au</b>
ZDD452	21	38	<b>17</b>	<b>2.84</b>	<b>9m @ 4.55 g/t Au</b>
ZDD458	91	93	<b>2</b>	<b>22.70</b>	<b>2m @ 22.7 g/t Au</b>
ZDD458	166	167	<b>1</b>	<b>13.41</b>	<b>1m @ 13.41 g/t Au</b>
ZDD459	15	20	<b>5</b>	<b>7.55</b>	<b>5m @ 7.55 g/t Au</b>
ZDD461	31	38	<b>7</b>	<b>1.40</b>	<b>3m @ 2.91 g/t Au</b>
ZDD464	40	50	<b>10</b>	<b>1.88</b>	<b>6m @ 2.86 g/t Au</b>
ZDD464	57	58	<b>1</b>	<b>32.93</b>	<b>1m @ 32.93 g/t Au</b>

Drill collar details and assay results are in Table 4, Table 5 and Table 6. Location of the drill collars reported and associated assay results is presented in Figure 1. An oblique cross-section highlighting selected assay results is presented in Figure 2.

Gold mineralisation remains open along strike and at depth. Tietto plans to drill additional holes along strike at APG, as well as further step-back drilling to test the limits of this large gold system.

<sup>5</sup> 1.0 g/t Au cut off used with max 3m internal dilution and no top cut applied

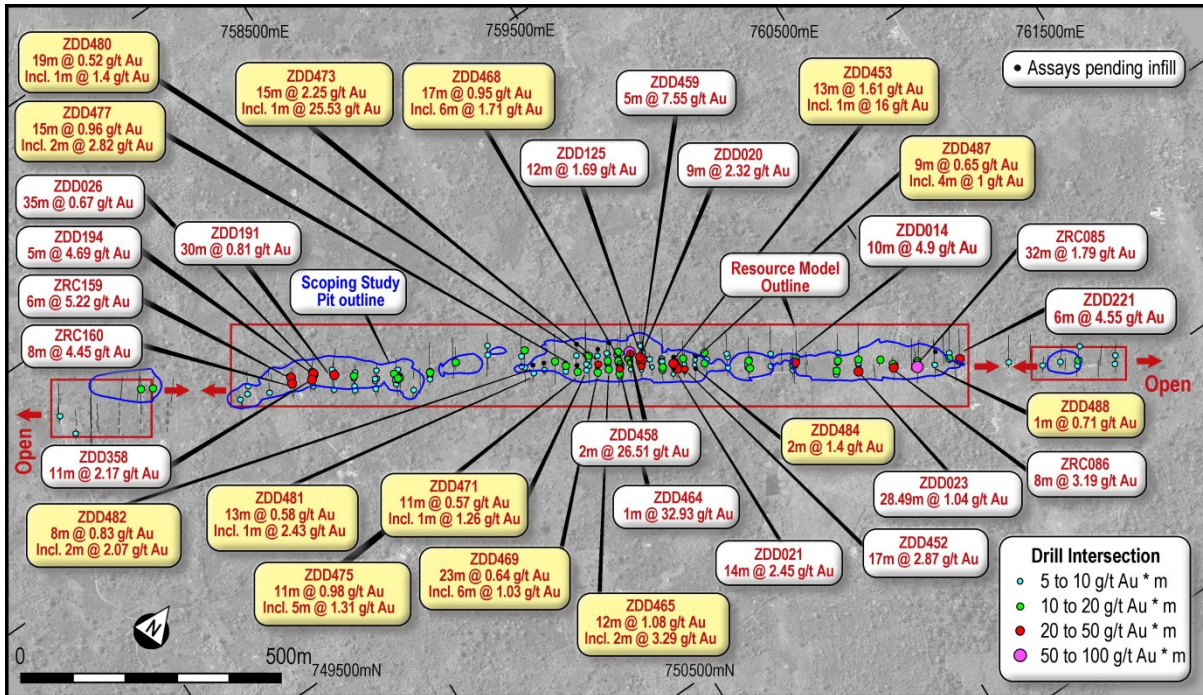


Figure 1: Plan view showing latest drill result at APG

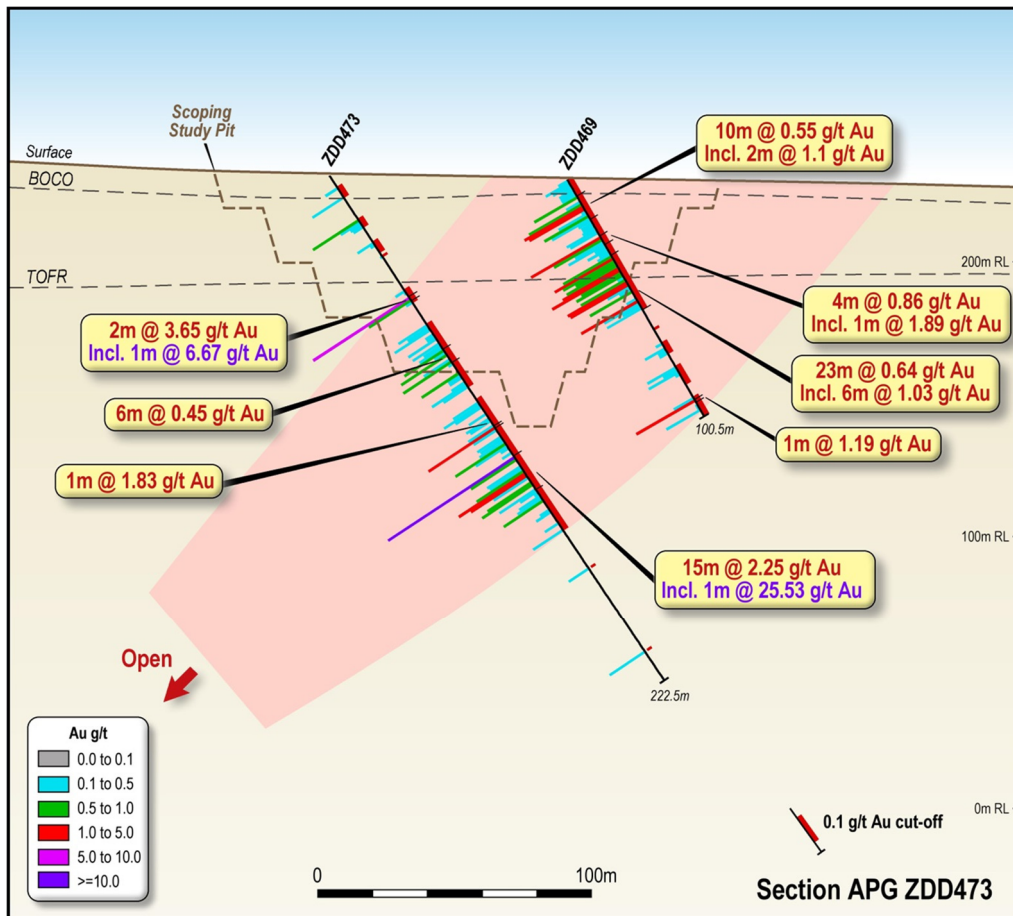


Figure 2: Oblique cross section showing latest drill results at APG

**Next Steps**

With \$52 million cash at the end of March, Tietto remains very well positioned to advance its dual strategy in 2021:

- 1) Continue to drive rapid resource growth at the 3.02Moz Abujar Gold Project; and
- 2) Fast-track development of the Abujar Gold Project.

**Aggressively exploring at Abujar to drive rapid resource growth:**

- Targeting 100,000m of diamond drilling in 2021 using our 6 Company-owned DD rigs drilling at US\$35/m;
- Drill testing 8.5km of fertile Abujar main shear along strike from the existing AG and APG deposits; and
- Drill testing high priority regional targets.

**Fast tracking development of the Abujar Gold Project:**

Tietto continues towards delivery of milestones during 2021 including a Definitive Study (DFS) for Abujar, which is on track for release in Q3 CY2021.

It recently announced it had secured a SAG mill for the project and awarded Engineering Design of the Abujar Gold Mine Processing Plant to Primero Group, a Perth-based specialist mine design company.

The Company is currently negotiating the Abujar Mining Convention with the Ivorian Government, being the final regulatory step for the Company to achieve, with all mining and environmental approval already secured.

Tietto's recently appointed COO Matt Wilcox is focused on value enhancement areas identified by the PFS, and is finalising plans for the commencement of long-lead activities to ensure an expedited route to commencement of production.

**ENDS**

This update has been authorised on behalf of Tietto Minerals Limited by:

**Dr Caigen Wang**  
Managing Director  
Tel: +61 8 9420 8270

**Mark Strizek**  
Executive Director  
Mob: +61 431 084 305

## Competent Persons' Statements

*The information in this report that relates to Exploration Targets and Exploration Results is based on information compiled by Mr Mark Strizek, a Competent Person who is a Member of The Australasian Institute of Mining and Metallurgy. Mr Strizek is a non-executive director of the Company. Mr Strizek has sufficient experience that is relevant to the style of mineralisation and type of deposit under consideration and to the activity being undertaken to qualify as a Competent Person as defined in the 2012 edition of the "Australasian Code for Reporting of Exploration Results, Mineral Resources and Ore Reserves". Mr Strizek consents to the inclusion in the announcement of the matters based on his information in the form and context in which it appears. Additionally, Mr Strizek confirms that the entity is not aware of any new information or data that materially affects the information contained in the ASX releases referred to in this report.*

## Compliance Statement

*This report contains information extracted from ASX market announcements reported in accordance with the 2012 edition of the "Australasian Code for Reporting of Exploration Results, Mineral Resources and Ore Reserves" ("2012 JORC Code") and available for viewing at [www.tietto.com](http://www.tietto.com). Includes results reported previously and published on ASX platform, 16 January 2018, 27 March 2018, 23 April 2018, 8 May 2018, 7 June 2018, 4 October 2018, 1 November 2018, 28 November 2018, 31 January 2019, 26 February 2019, 12 March 2019, 19 March 2019, 9 April 2019, 9 May 2019, 30 May 2019, 9 July 2019, 26 July 2019, 2 October 2019, 24 October 2019, 12 December 2019, 23 January 2020, 20 February 2020, 10 March 2020, 24 March 2020, 2 April 2020, 9 April 2020, 23 April 2020, 3 June 2020, 9 June 2020, 25 June 2020, 2 July 2020, 21 July 2020, 20 July 2020, 29 July 2020, 19 August 2020, 9 September 2020, 24 September 2020, 26 October 2020, 11 December 2020, 18 January 2021, 12 February 2021, 23 February 2021, 23 March 2021, 6 April 2021, 8 April 2021, 20 April 2021 and 3 May 2021. The Company confirms that it is not aware of any new information or data that materially affects the information included in the previous announcements.*

**Table 4: Drill Collar Information of holes reported – APG**

Hole ID	Easting	Northing	Elevation	Depth (m)	dip	Azi	Drill Type
ZDD453	749,216	759,206	243	165.5	-60	125	DD
ZDD465	748,992	758,996	235	210	-62	125	DD
ZDD468	749,075	758,939	235	121.5	-60	125	DD
ZDD469	749,056	758,891	231	100.5	-60	125	DD
ZDD471	749,003	758,867	228	120	-55	125	DD
ZDD473	748,984	758,940	232	222.5	-57	125	DD
ZDD475	748,989	758,816	226	100.5	-60	125	DD <sup>1</sup>
ZDD477	748,950	758,782	223	102	-60	125	DD
ZDD480	748,906	758,873	227	211.5	-57	125	DD
ZDD481	748,893	758,700	218	102	-60	125	DD
ZDD482	748,874	758,652	216	102	-55	125	DD
ZDD484	749,315	759,259	243	102	-60	125	DD
ZDD487	749,265	759,293	244	189	-60	125	DD
ZDD488	749,888	760,211	230	202.5	-55	125	DD <sup>1</sup>
ZDD526	748,267	757,718	237	153.5	-50	125	DD <sup>2</sup>
ZDD527	748,486	758,085	235	48	-50	125	DD <sup>2</sup>
ZDD527A	748,487	758,087	235	158	-50	125	DD <sup>2</sup>
<b>17 Holes</b>				<b>2,411m</b>			
DD complete							
DD <sup>1</sup> some results received with assays pending							
DD <sup>2</sup> assays pending							



**Table 5: Assay results being reported for APG<sup>6</sup>**

Hole id	Depth from	Depth to	Length	g/t Au	Includes <sup>7</sup>
ZDD453	2	3	1	0.68	
ZDD453	24	28	4	0.74	1m @ 2.02 g/t Au
ZDD453	33	37	4	0.92	3m @ 1.1 g/t Au
ZDD453	41	42	1	0.98	
ZDD453	47	60	13	1.61	1m @ 16 g/t Au
ZDD453	73	74	1	0.41	
ZDD453	79	80	1	0.44	
ZDD453	81	82	1	0.40	
ZDD453	83	84	1	0.51	
ZDD453	92	93	1	2.41	1m @ 2.41 g/t Au
ZDD453	100	101	1	0.48	
ZDD453	159	160	1	0.46	
ZDD465	45	46	1	0.42	
ZDD465	66	67	1	0.54	
ZDD465	90	91	1	1.24	1m @ 1.24 g/t Au
ZDD465	96	100	4	1.05	2m @ 1.41 g/t Au
ZDD465	107	114	7	0.43	1m @ 1.03 g/t Au
ZDD465	118	122	4	0.68	1m @ 1.09 g/t Au
ZDD465	126	140	14	0.58	1m @ 3.29 g/t Au
ZDD465	155	167	12	1.08	2m @ 3.29 g/t Au
ZDD465	175	176	1	0.66	
ZDD465	194	195	1	0.51	
ZDD468	3	7	4	0.98	1m @ 2.27 g/t Au
ZDD468	15	32	17	0.95	6m @ 1.71 g/t Au
ZDD468	37	46	9	0.86	3m @ 1.25 g/t Au
ZDD468	53	56	3	0.77	1m @ 1.6 g/t Au
ZDD468	61	62	1	1.76	1m @ 1.76 g/t Au
ZDD468	117	119	2	1.03	2m @ 1.02 g/t Au
ZDD469	7	17	10	0.55	2m @ 1.1 g/t Au
ZDD469	24	28	4	0.86	1m @ 1.89 g/t Au
ZDD469	32	55	23	0.64	6m @ 1.03 g/t Au
ZDD469	93	94	1	1.19	1m @ 1.19 g/t Au
ZDD469	97	98	1	0.42	
ZDD471	10	11	1	1.94	1m @ 1.94 g/t Au
ZDD471	16	27	11	0.57	1m @ 1.26 g/t Au
ZDD471	38	39	1	1.73	1m @ 1.73 g/t Au
ZDD471	53	57	4	0.78	1m @ 1.82 g/t Au
ZDD471	68	76	8	0.72	4m @ 1 g/t Au

<sup>6</sup> 0.4 g/t Au cut off used with max 3m internal dilution and no top cut applied

<sup>7</sup> 1.0 g/t Au cut off used with max 3m internal dilution and no top cut applied

Hole id	Depth from	Depth to	Length	g/t Au	Includes <sup>7</sup>
ZDD473	19	20	1	0.73	
ZDD473	53	55	2	3.65	1m @ 6.67 g/t Au
ZDD473	67	68	1	0.47	
ZDD473	76	82	6	0.45	
ZDD473	86	87	1	0.51	
ZDD473	91	92	1	0.45	
ZDD473	100	101	1	0.48	
ZDD473	110	111	1	1.83	1m @ 1.83 g/t Au
ZDD473	117	118	1	0.90	
ZDD473	123	138	15	2.25	1m @ 25.53 g/t Au
ZDD473	142	143	1	0.57	
ZDD473	209	210	1	0.47	
ZDD475	5	6	1	0.43	
ZDD475	31	32	1	0.79	
ZDD475	39	47	8	0.73	1m @ 1.66 g/t Au
ZDD475	54	65	11	0.98	5m @ 1.31 g/t Au
ZDD477	16	31	15	0.96	2m @ 2.82 g/t Au
ZDD477	39	40	1	2.32	1m @ 2.32 g/t Au
ZDD477	49	51	2	0.51	
ZDD477	62	63	1	0.49	
ZDD477	70	80	10	0.95	5m @ 1.29 g/t Au
ZDD477	98	99	1	0.70	
ZDD480	51	52	1	0.74	
ZDD480	59	60	1	0.53	
ZDD480	64	65	1	1.08	1m @ 1.08 g/t Au
ZDD480	74	76	2	1.20	1m @ 1.84 g/t Au
ZDD480	90	91	1	0.42	
ZDD480	95	114	19	0.52	1m @ 1.4 g/t Au
ZDD480	126	127	1	0.43	
ZDD480	147	149	2	0.48	
ZDD480	152	153	1	0.60	
ZDD480	160	165	5	0.47	
ZDD480	177	178	1	0.47	
ZDD480	200	201	1	0.84	
ZDD481	37	38	1	0.41	
ZDD481	49	51	2	0.43	
ZDD481	63	76	13	0.58	1m @ 2.43 g/t Au
ZDD481	87	88	1	0.49	
ZDD482	20	25	5	0.62	1m @ 1.91 g/t Au
ZDD482	39	44	5	0.45	1m @ 1.08 g/t Au
ZDD482	49	50	1	0.47	

Hole id	Depth from	Depth to	Length	g/t Au	Includes <sup>7</sup>
ZDD482	55	56	1	0.77	
ZDD482	60	68	8	0.83	2m @ 2.07 g/t Au
ZDD482	75	81	6	0.45	
ZDD482	85	86	1	0.70	
ZDD482	99	100	1	0.97	
ZDD484	6	8	2	1.40	2m @ 1.4 g/t Au
ZDD484	13	14	1	0.43	
ZDD484	18	19	1	0.61	
ZDD484	24	27	3	0.44	
ZDD484	36	37	1	0.43	
ZDD484	52	53	1	0.48	
ZDD487	19	21	2	0.72	
ZDD487	41	51	10	0.51	1m @ 1.97 g/t Au
ZDD487	59	60	1	1.18	1m @ 1.18 g/t Au
ZDD487	76	77	1	0.59	
ZDD487	83	92	9	0.65	4m @ 1 g/t Au
ZDD487	166	168	2	0.50	
ZDD487	188	189	1	0.42	
ZDD488	199	200	1	0.71	

**Table 6: Assay results being reported for APG using 0.1 g/t Au cut-off<sup>8</sup>**

Hole id	Depth from	Depth to	Length	g/t Au	Includes <sup>9</sup>
ZDD453	0	7	7	0.23	
ZDD453	16	117	101	0.45	1m @ 16 g/t Au
ZDD453	124	126	2	0.17	
ZDD453	142	143	1	0.15	
ZDD453	157	160	3	0.29	
ZDD465	2	3	1	0.19	
ZDD465	22	30	8	0.13	
ZDD465	42	46	4	0.21	
ZDD465	51	52	1	0.12	
ZDD465	55	56	1	0.13	
ZDD465	60	62	2	0.16	
ZDD465	66	72	6	0.18	
ZDD465	76	77	1	0.13	
ZDD465	80	81	1	0.20	
ZDD465	89	141	52	0.45	1m @ 3.29 g/t Au

<sup>8</sup> 0.1 g/t Au cut off used with max 3m internal dilution and no top cut applied

<sup>9</sup> 1.0 g/t Au cut off used with max 3m internal dilution and no top cut applied

Hole id	Depth from	Depth to	Length	g/t Au	Includes <sup>9</sup>
ZDD465	150	169	19	0.74	2m @ 3.29 g/t Au
ZDD465	173	181	8	0.17	
ZDD465	186	196	10	0.15	
ZDD465	204	206	2	0.16	
ZDD468	0	8	8	0.58	1m @ 2.27 g/t Au
ZDD468	12	70	58	0.55	6m @ 1.71 g/t Au
ZDD468	75	76	1	0.11	
ZDD468	77	79	2	0.11	
ZDD468	83	84	1	0.10	
ZDD468	116	119	3	0.72	2m @ 1.02 g/t Au
ZDD469	0	55	55	0.49	6m @ 1.03 g/t Au
ZDD469	63	64	1	0.10	
ZDD469	69	74	5	0.14	
ZDD469	79	87	8	0.15	
ZDD469	92	100.5	8.5	0.27	1m @ 1.19 g/t Au
ZDD471	0	29	29	0.41	1m @ 1.94 g/t Au
ZDD471	37	86	49	0.33	4m @ 1 g/t Au
ZDD471	90	93	3	0.10	
ZDD471	98	99	1	0.13	
ZDD471	100	102	2	0.11	
ZDD471	113	119	6	0.16	
ZDD473	5	10	5	0.15	
ZDD473	19	23	4	0.32	
ZDD473	29	34	5	0.10	
ZDD473	35	36	1	0.11	
ZDD473	50	56	6	1.30	1m @ 6.67 g/t Au
ZDD473	65	93	28	0.27	
ZDD473	98	156	58	0.76	1m @ 25.53 g/t Au
ZDD473	172	173	1	0.24	
ZDD473	209	210	1	0.47	
ZDD475	0	12	12	0.26	
ZDD475	16	67	51	0.43	5m @ 1.31 g/t Au
ZDD477	0	90	90	0.41	5m @ 1.29 g/t Au
ZDD477	94	99	5	0.26	
ZDD480	14	24	10	0.16	
ZDD480	31	35	4	0.12	
ZDD480	41	60	19	0.17	
ZDD480	64	65	1	1.08	1m @ 1.08 g/t Au
ZDD480	73	78	5	0.58	1m @ 1.84 g/t Au
ZDD480	90	115	25	0.43	1m @ 1.4 g/t Au
ZDD480	121	122	1	0.10	

Hole id	Depth from	Depth to	Length	g/t Au	Includes <sup>9</sup>
ZDD480	123	130	7	0.18	
ZDD480	135	194	59	0.19	
ZDD480	199	201	2	0.47	
ZDD481	0	82	82	0.23	1m @ 2.43 g/t Au
ZDD481	87	92	5	0.18	
ZDD481	98	99	1	0.35	
ZDD482	0	1	1	0.10	
ZDD482	5	8	3	0.14	
ZDD482	12	86	74	0.33	2m @ 2.07 g/t Au
ZDD482	99	101	2	0.59	
ZDD484	0	32	32	0.31	2m @ 1.4 g/t Au
ZDD484	36	53	17	0.15	
ZDD484	84	86	2	0.16	
ZDD487	3	4	1	0.18	
ZDD487	8	15	7	0.13	
ZDD487	19	24	5	0.34	
ZDD487	35	97	62	0.31	4m @ 1 g/t Au
ZDD487	108	119	11	0.11	
ZDD487	126	127	1	0.17	
ZDD487	133	138	5	0.12	
ZDD487	152	153	1	0.10	
ZDD487	166	168	2	0.50	
ZDD487	188	189	1	0.42	
ZDD488	0	1	1	0.10	
ZDD488	3	4	1	0.10	
ZDD488	122	125	3	0.19	
ZDD488	137	141	4	0.11	
ZDD488	180	183	3	0.29	
ZDD488	190	192	2	0.14	
ZDD488	199	201	2	0.41	

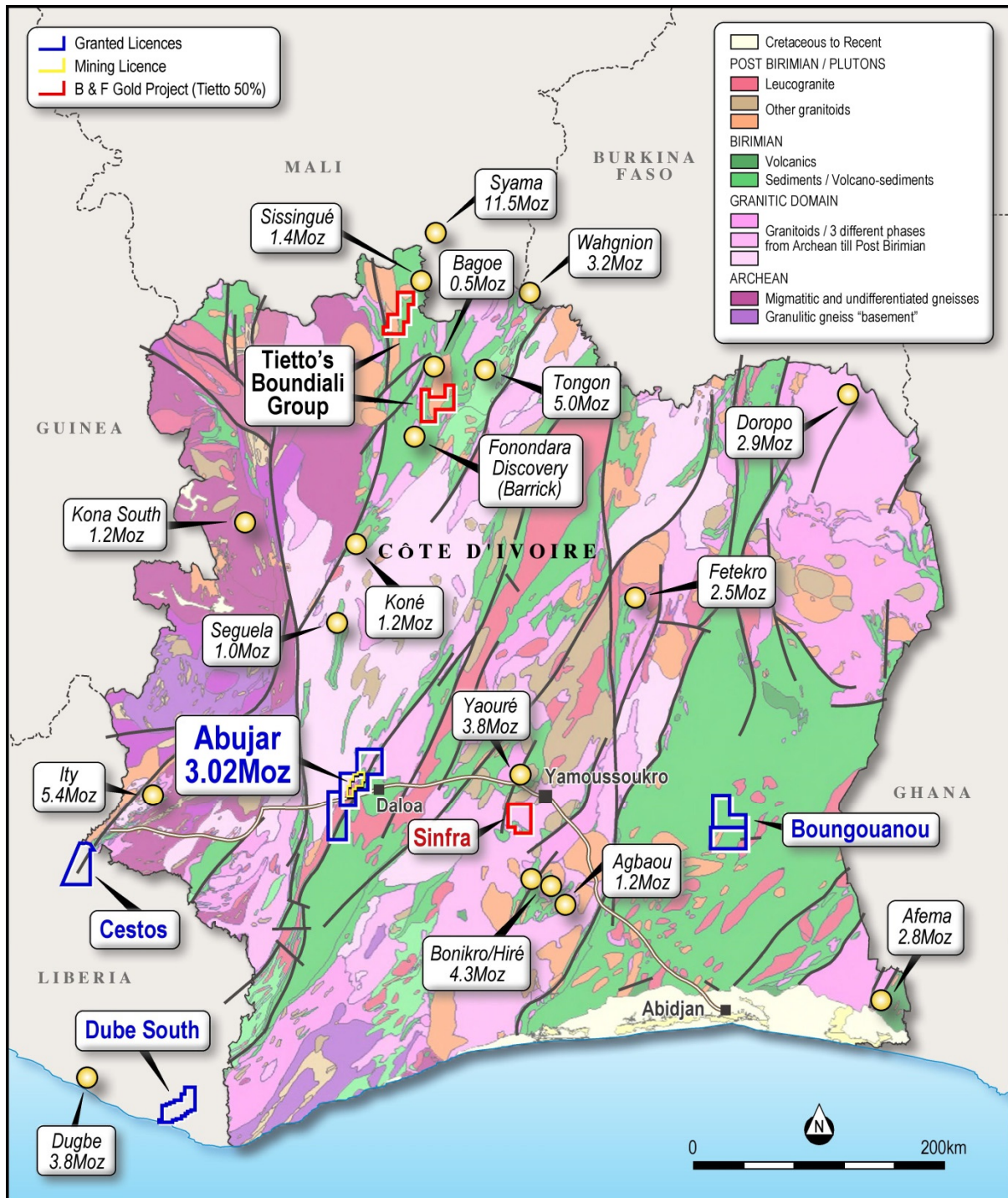


Figure 3: Plan view showing location of Tietto's Projects

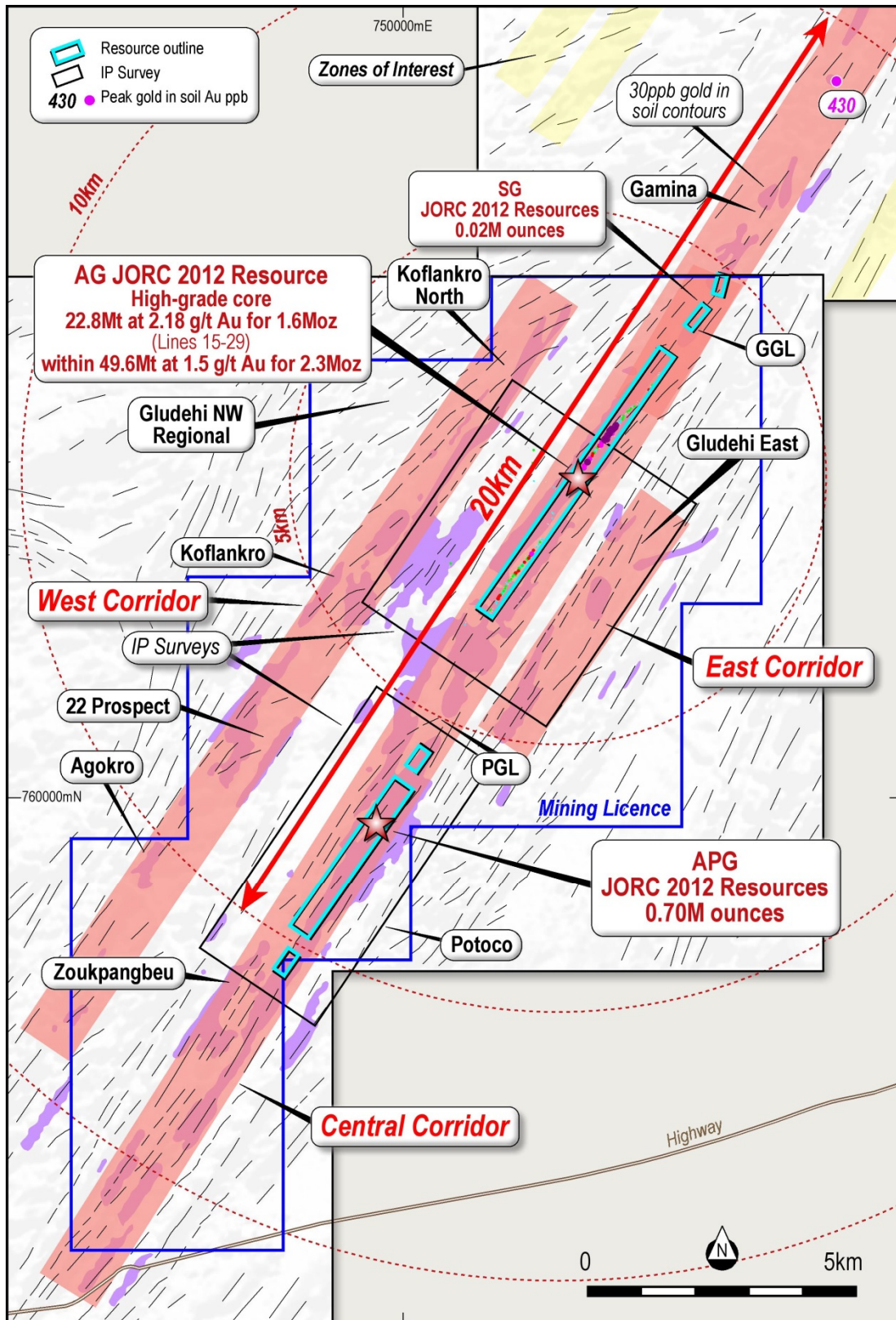


Figure 4: Plan view showing Abujar Project

## **Abujar Gold Project, Côte d'Ivoire**

The Abujar Gold Project is located approximately 30km from the major regional city of Daloa in central western Côte D'Ivoire. It is close to good regional and local infrastructure to facilitate exploration and development being only 15km from nearest tarred road and grid power.

The Abujar Gold Project is comprised of three contiguous exploration tenements, Middle, South and North tenement, with a total land area of 1,114km<sup>2</sup>, of which less than 10% has been explored. It features an NNE-orientated gold corridor over 70km striking across three tenements.

In December 2020, a gold exploitation (mining) licence within the Abujar Middle exploration tenement was granted. The mining tenement covers an area of 120.36km<sup>2</sup>.

Tietto is well placed to grow its resource inventory. It has substantially advanced the project since starting exploration in mid-2015 with the identification of 3.02 million ounces Indicated and Inferred JORC 2012 Mineral Resources and has completed a PFS which was reported on 6 April 2021. A DFS is expected to be released in Q3 2021.

### **JORC Statement of Mineral Resources**

Results of the independent Mineral Resources estimate for the Project are tabulated in the Statement of Mineral Resources below, which are reported in line with the requirements of the 2012 JORC Code; as such the Statement of Mineral Resources is suitable for public reporting. The Statement of Mineral Resources shown in **Table 7**.

Within AG, the Mineral Resource is reported at a cut-off grade of 0.3 Au g/t within a pit shell at a gold price of 2,000 USD per troy ounce, and 0.8 Au g/t below the pit. The cut-off grades were based on estimated mining and processing costs and recovery factors of similar projects in Cote d'Ivoire as detailed in JORC Table 1. It is highlighted that while a 2,000 USD per ounce pit shell was utilised the cut-off grades were estimated based on the gold price of 1,881 USD per troy ounce which is 1.25 times the consensus forecast as of September, 2020.

Within APG due to the shallow nature of mineralisation (maximum depth 250m) and Inferred classification the resource was reported with a changing cut-off grade at depth. This was due to the increased costs of potential mining and likely requirement to haul material to the plant at AG. The resource is reported using a 0.3 g/t cut off to a depth of 120m and a 0.8 g/t cut off below 120m at APG. Similarly, the South Gamina Resource was reported to a depth of 120m and not reported at depths below 120m.



**Table 7: Statement of Mineral Resources by Deposit as at October 21, 2020 Reported at 0.3 g/t Au cut off within pit shells; and 0.8 g/t Au cut off below the pit shells for AG, and 0.3 g/t to a depth of 120m and 0.8 g/t below 120m for APG, and 0.3 g/t to a depth of 120m for SG**

Area	Class	Oxide			Transition			Fresh			Total		
		Quantity (Mt)	Au (g/t)	Au (Moz)	Quantity (Mt)	Au (g/t)	Au (Moz)	Quantity (Mt)	Au (g/t)	Au (Moz)	Quantity (Mt)	Au (g/t)	Au (Moz)
AG	Indicated	0.2	1.3	0.006	0.7	1.2	0.029	23.2	1.6	1.207	24.1	1.6	1.24
	Inferred	0.6	1.2	0.024	2.2	1.0	0.069	22.7	1.3	0.963	25.6	1.3	1.06
	<b>Total</b>	<b>0.8</b>	<b>1.2</b>	<b>0.03</b>	<b>2.9</b>	<b>1.1</b>	<b>0.10</b>	<b>45.9</b>	<b>1.5</b>	<b>2.17</b>	<b>49.6</b>	<b>1.5</b>	<b>2.30</b>
APG	Inferred	1.2	0.6	0.02	6.3	0.6	0.13	23.5	0.7	0.54	31.0	0.7	0.70
SG	Inferred	0.04	0.7	0.00	0.1	0.8	0.00	0.4	1.6	0.02	0.5	1.4	0.02
<b>Grand Total</b>		<b>2.04</b>	<b>0.8</b>	<b>0.05</b>	<b>9.3</b>	<b>0.8</b>	<b>0.23</b>	<b>69.8</b>	<b>1.2</b>	<b>2.73</b>	<b>81.2</b>	<b>1.2</b>	<b>3.02</b>

**Note:**

1. The Mineral Resources has been compiled under the supervision of Mr. Jeremy Clark who is an associate of RPM and a Registered Member of the Australian Institute of Mining and Metallurgy. Mr. Clark has sufficient experience that is relevant to the style of mineralisation and type of deposit under consideration and to the activity that he has undertaken to qualify as a Competent Person as defined in the JORC Code.
2. All Mineral Resources figures reported in the table above represent estimates at 21 October, 2020. Mineral Resource estimates are not precise calculations, being dependent on the interpretation of limited information on the location, shape and continuity of the occurrence and on the available sampling results. The totals contained in the above table have been rounded to reflect the relative uncertainty of the estimate. Rounding may cause some computational discrepancies.
3. Mineral Resources are reported in accordance with the Australasian Code for Reporting of Exploration Results, Mineral Resources and Ore Reserves (The Joint Ore Reserves Committee Code – JORC 2012 Edition).
4. The Mineral Resources have been reported at a 100% equity stake and not factored for ownership proportions.
5. The Company confirms it is not aware of any new information or data that materially affects the information included in the original announcement dated 6 April 2021. The Company confirms that all material assumptions and technical parameters underpinning the Ore Reserve continue to apply and have not materially changed. The Company confirms that the form and context in which the Competent Person's findings are presented have not been materially modified.

The total resource at AG and APG is reported at varying cut-off grades as provided in **Table 8** below. However, RPM recommends that the Mineral Resource be reported using the criteria shown in **Table 7**. It is highlighted that is not a Statement of Mineral Resources and does not include the use of pit shells to report the quantities rather the application of various cut off grades. As such variations with **Table 7** will occur and a direct comparison is not able to be completed.

**Table 8: AG and APG Mineral Resources at varying cut off grades**

COG	AG Indicated			AG Inferred			AG Total			APG Inferred			Combined Total		
	Quantity (Mt)	Au (g/t)	Au (Moz)	Quantity (Mt)	Au (g/t)	Au (Moz)	Quantity (Mt)	Au (g/t)	Au (Moz)	Quantity (Mt)	Au (g/t)	Au (Moz)	Quantity (Mt)	Au (g/t)	Au (Moz)
0.1	28.5	1.4	1.3	45.4	0.9	1.3	73.9	1.1	2.6	57.5	0.6	1.0	131.4	0.9	3.7
0.2	28.2	1.4	1.3	44.6	0.9	1.3	72.8	1.1	2.6	56.0	0.6	1.0	128.8	0.9	3.7
0.3	26.8	1.5	1.3	41.5	1.0	1.3	68.3	1.2	2.6	48.5	0.6	1.0	116.8	1.0	3.6
0.4	24.0	1.6	1.3	35.3	1.1	1.2	59.3	1.3	2.5	35.9	0.7	0.8	95.2	1.1	3.3
0.5	20.6	1.8	1.2	28.9	1.2	1.2	49.5	1.5	2.4	23.6	0.9	0.6	73.2	1.3	3.0
0.6	17.9	2.0	1.2	23.4	1.4	1.1	41.2	1.7	2.2	16.3	1.0	0.5	57.5	1.5	2.7
0.7	15.6	2.2	1.1	18.8	1.6	1.0	34.4	1.9	2.1	10.8	1.2	0.4	45.2	1.7	2.5
0.8	13.8	2.4	1.1	15.7	1.8	0.9	29.5	2.1	2.0	7.6	1.3	0.3	37.1	1.9	2.3
0.9	12.4	2.6	1.0	13.5	1.9	0.8	25.8	2.2	1.9	6.0	1.5	0.3	31.9	2.1	2.1
1.0	11.2	2.8	1.0	11.8	2.0	0.8	23.1	2.4	1.8	3.9	1.7	0.2	27.0	2.3	2.0
1.1	10.2	2.9	1.0	10.4	2.2	0.7	20.6	2.5	1.7	2.8	2.0	0.2	23.4	2.5	1.9
1.2	9.4	3.1	0.9	9.3	2.3	0.7	18.7	2.7	1.6	2.4	2.2	0.2	21.1	2.6	1.8
1.3	8.7	3.2	0.9	8.3	2.4	0.6	17.0	2.8	1.6	2.1	2.3	0.2	19.1	2.8	1.7
1.4	8.0	3.4	0.9	7.5	2.5	0.6	15.4	3.0	1.5	1.7	2.5	0.1	17.1	2.9	1.6
1.5	7.4	3.6	0.8	6.7	2.7	0.6	14.1	3.1	1.4	1.6	2.6	0.1	15.7	3.1	1.6
1.6	6.8	3.7	0.8	6.0	2.8	0.5	12.9	3.3	1.4	1.5	2.7	0.1	14.3	3.2	1.5
1.8	5.9	4.0	0.8	5.0	3.0	0.5	10.9	3.6	1.3	1.2	2.9	0.1	12.1	3.5	1.4
1.9	5.6	4.2	0.7	4.5	3.2	0.5	10.0	3.7	1.2	1.1	3.0	0.1	11.2	3.6	1.3
2.0	5.2	4.3	0.7	4.0	3.3	0.4	9.2	3.9	1.2	1.1	3.0	0.1	10.3	3.8	1.3
2.5	4.0	4.9	0.6	2.6	3.9	0.3	6.6	4.5	1.0	0.8	3.3	0.1	7.4	4.4	1.0
3.0	3.2	5.5	0.6	1.8	4.4	0.3	5.0	5.1	0.8	0.4	3.8	0.1	5.4	5.0	0.9

Abujar Gold Project Ore Reserves have been declared as a Probable Ore Reserve of 15.7Mt ROM at 1.71 g/t Au for 860,000 ounces as set out in Table 9 (refer ASX release 6 April 2021).

**Table 9: Ore Reserve Estimate as at 31 December 2020**

Deposit	Proved			Probable			Total		
	Quantity	Au	Au	Quantity	Au	Au	Quantity	Au	Au
	Mt	g/t	Moz	Mt	g/t	Moz	Mt	g/t	Moz
AG Deposit	0	0.0	0	15.7	1.7	0.86	15.7	1.7	0.86
<b>Total</b>	<b>0</b>	<b>0.0</b>	<b>0</b>	<b>15.7</b>	<b>1.7</b>	<b>0.86</b>	<b>15.7</b>	<b>1.7</b>	<b>0.86</b>

**Notes:**

- The Ore Reserve has been compiled under the supervision of Mr. Igor Bojanic who is a full-time employee of RPM and a Fellow of the Australian Institute of Mining and Metallurgy. Mr. Bojanic has sufficient experience that is relevant to the style of mineralisation and type of deposit and mining method under consideration and to the activity that he has undertaken to qualify as a Competent Person as defined in the JORC Code.*
- The following marginal cut-off grades determined based on a USD 1,459 per troy ounce gold price, and costs and mining and metallurgical modifying factors estimated as part of a PFS. Marginal cut-off grades: Oxide 0.35 g/t Au, Transition 0.35 g/t Au and Fresh 0.35 g/t Au.*
- Mineral Resources are inclusive of Ore Reserves and all Ore Reserve figures reported in the table above represent estimates at 31 December, 2020. Ore Reserve estimates are not precise calculations, being dependent on the interpretation of limited information on the location, shape and continuity of the occurrence and on the available sampling results. The quantities contained in the above table have been rounded to three significant figures to reflect the relative uncertainty of the estimate. Rounding may cause values in the table to appear to have computational errors.*
- All Ore Reserve estimates are on a dry basis.*
- The Ore Reserves have been reported at a 100% equity stake and not factored for ownership proportions.*
- The Company confirms it is not aware of any new information or data that materially affects the information included in the original announcement dated 6 April 2021. The Company confirms that all material assumptions and technical parameters underpinning the Ore Reserve continue to apply and have not materially changed. The Company confirms that the form and context in which the Competent Person's findings are presented have not been materially modified.*

## Section 1 of the JORC Code, 2012 Edition – Table 1

### Sampling Techniques and Data

Criteria	JORC Code explanation	Commentary
<b>Sampling techniques</b>	<ul style="list-style-type: none"> <li>• <i>Nature and quality of sampling (eg cut channels, random chips, or specific specialised industry standard measurement tools appropriate to the minerals under investigation, such as down hole gamma sondes, or handheld XRF instruments, etc). These examples should not be taken as limiting the broad meaning of sampling.</i></li> <li>• <i>Include reference to measures taken to ensure sample representivity and the appropriate calibration of any measurement tools or systems used.</i></li> <li>• <i>Aspects of the determination of mineralisation that are Material to the Public Report. In cases where 'industry standard' work has been done this would be relatively simple (eg 'reverse circulation drilling was used to obtain 1 m samples from which 3 kg was pulverised to produce a 30 g charge for fire assay'). In other cases more explanation may be required, such as where there is coarse gold that has inherent sampling problems. Unusual commodities or mineralisation types (eg submarine nodules) may warrant disclosure of detailed information.</i></li> </ul>	<ul style="list-style-type: none"> <li>• Samples at AG and APG project areas were collected using drilling techniques including Air Core Drilling (AC), Reverse Circulation (RC), Diamond Drilling (DD). Holes were generally angled at 60° to 90° towards northwest at AG to optimally intersect the mineralised zones however within APG the recent holes were drilled to the North East due to the reinterpreted westerly dip of the mineralisation.</li> <li>• AC samples were collected every 1m from cyclone, and 2m composite samples which is combined with two 1/3 of each one meter sample were sent for assaying. No Aircore samples were used in the estimates reported in the Report.</li> <li>• RC samples were collected as 1m samples from the cyclone, which were subsequently spear sampled to form 2 m samples which were subsequently sent to the laboratory. All one meter samples were split using a riffle splitter with 1/4 of the same retained in the plastic bags, the remainder was re-split with 1/4 retained in calico bag and the remainder discarded.</li> <li>• Diamond core was logged both for geological and mineralised structures as noted above. The core was then cut in half using a diamond brick cutting saw on 1m intervals. Typically the core was sampled to geological intervals as defined by the geologist within the even two metre sample intervals utilised. The right hand side of the core was always submitted for analysis with the left side being stored in trays on site.</li> <li>• No QAQC was completed during the 2015 drilling program, however the vast majority of the data is sourced from the 2016-2020 drilling which implemented definitive QAQC program, to provide verification of the sample procedure, the sample preparation and the analytical precision and accuracy of the primary laboratory.</li> <li>• Sampling and QAQC procedures were carried out to industry standards upon the advice of RPM.</li> <li>• Sample preparation was completed by independent international accredited laboratories ALS Ghana in 2016 and Intertek Minerals Ltd in 2018 to 2020. Following cutting or splitting, the samples were bagged by</li> </ul>

Criteria	JORC Code explanation	Commentary
		the Client employees and then sent to the laboratory for preparation. These samples were subsequently sent to Ghana for analysis via 30g fire assay in 2016-2017 (ALS Ghana) and 150g fire assay in 2018-2020 (Intertek Ghana).
<b>Drilling techniques</b>	<ul style="list-style-type: none"> <li>• <i>Drill type (eg core, reverse circulation, open-hole hammer, rotary air blast, auger, Bangka, sonic, etc) and details (eg core diameter, triple or standard tube, depth of diamond tails, face-sampling bit or other type, whether core is oriented and if so, by what method, etc).</i></li> </ul>	<ul style="list-style-type: none"> <li>• AC drilling size is 89 mm, RC drilling comprising 105mm diameter face sampling bit. Diamond drilling carried out with mostly NTW and some HQ sized equipment. PQ-size rods and casing were used at the top the holes to stabilise the collars although no samples were taken from the PQ size core.</li> </ul>
<b>Drill sample recovery</b>	<ul style="list-style-type: none"> <li>• <i>Method of recording and assessing core and chip sample recoveries and results assessed.</i></li> <li>• <i>Measures taken to maximise sample recovery and ensure representative nature of the samples.</i></li> <li>• <i>Whether a relationship exists between sample recovery and grade and whether sample bias may have occurred due to preferential loss/gain of fine/coarse material.</i></li> </ul>	<ul style="list-style-type: none"> <li>• Within the Diamond drilling typically core recoveries ranged between 85% and 100% for all holes with no significant issues noted. All 2019 and 2020 holes have recoveries above 95% in the majority of the mineralised areas.</li> <li>• Some low recovery are associated with intensely fractured or faulted intervals and the more intensely weathered upper zone however These low recoveries are not considered material to the total Mineral Resource currently estimated.</li> <li>• AC, RC samples were visually checked for recovery, moisture and contamination. RPM notes that it has relied on information for the majority of holes for sample recovery based on drilling plods however considers sample recovery suitable and notes that the majority of the Mineral Resources reported are underpinned by diamond holes.</li> <li>• No relationship exists between sample recovery and grade.</li> </ul>
<b>Logging</b>	<ul style="list-style-type: none"> <li>• <i>Whether core and chip samples have been geologically and geotechnically logged to a level of detail to support appropriate Mineral Resource estimation, mining studies and metallurgical studies.</i></li> <li>• <i>Whether logging is qualitative or quantitative in nature. Core (or costean, channel, etc) photography.</i></li> <li>• <i>The total length and percentage of the relevant intersections logged.</i></li> </ul>	<ul style="list-style-type: none"> <li>• All holes were field logged by company geologists. Lithological, alteration and mineralogical nomenclature of the deposit as well as sulphide content were recorded. No geotechnical and structural data measured has been recorded until the last 10 holes of the 2019 program and the 2020 holes.</li> <li>• Photography and recovery measurements were carried out by assistants under a geologist's supervision. The logging for all RC holes is also recorded on a logging "chip-board", where the chips for each metre are glued to a board to form a visual log of the entire hole</li> <li>• All drill holes were logged in full.</li> <li>• Logging was qualitative and quantitative in nature.</li> </ul>
<b>Sub-sampling techniques and sample preparation</b>	<ul style="list-style-type: none"> <li>• <i>If core, whether cut or sawn and whether quarter, half or all core taken.</i></li> <li>• <i>If non-core, whether riffled, tube sampled, rotary split, etc and whether sampled wet or dry.</i></li> </ul>	<ul style="list-style-type: none"> <li>• HQ and NTW core was cut in half using a core saw. Typically the core was sampled to major geological intervals as defined by the geologist within the even two metre sample intervals utilised. All samples were collected</li> </ul>

Criteria	JORC Code explanation	Commentary
	<ul style="list-style-type: none"> <li>For all sample types, the nature, quality and appropriateness of the sample preparation technique.</li> <li>Quality control procedures adopted for all sub-sampling stages to maximise representivity of samples.</li> <li>Measures taken to ensure that the sampling is representative of the in situ material collected, including for instance results for field duplicate/second-half sampling.</li> <li>Whether sample sizes are appropriate to the grain size of the material being sampled.</li> </ul>	<p>from the same side of the core.</p> <ul style="list-style-type: none"> <li>AC, RC samples were collected as 1m samples from the cyclone, which were subsequently composited using as spear samples to form 2 m samples.</li> <li>Sampling of diamond core and AC, RC chips used industry standard techniques. Sample preparation for the 2020 drilling is detailed below; previous releases detail the 2016 and 2018 drilling results. After drying the sample is subject to a primary crush to 2mm. Sample is split through a riffle splitter until 250gm is left (this involves 4-5 splits through the riffle splitter).</li> <li>The 250gm sample is milled through an LM5 using a single puck to 90% &lt;75 micron</li> <li>Milled sample is homogenised through a matt roll with a 150gm routine sample collected using a spoon around the quadrants and sent to Ghana for analysis and the remaining 100gm kept at Intertek for checks.</li> <li>Field QC procedures involved the use of 2 types certified reference materials (1 in 20) which is certified by Geostats Ltd,</li> <li>Primary RC duplicates: Generated from the first splitter off the rig and inserted 5% (1 in 20 samples). This sample is collected from a spear sample from the reject material of the primary split.</li> <li>Primary DD duplicate: Generated by cutting the remaining half core into a ¼ and sampled.</li> <li>Coarse blank samples: Inserted 1 in every 20 samples</li> <li>Laboratory Internal Duplicates and Standards</li> <li>Sample sizes are considered appropriate to correctly represent the moderately nuggetty gold mineralisation based on: the style of mineralisation, the thickness and consistency of the intersections, the sampling methodology and assay value ranges for Au.</li> </ul>
<b>Quality of assay data and laboratory tests</b>	<ul style="list-style-type: none"> <li>The nature, quality and appropriateness of the assaying and laboratory procedures used and whether the technique is considered partial or total.</li> <li>For geophysical tools, spectrometres, handheld XRF instruments, etc, the parameters used in determining the analysis including instrument make and model, reading times, calibrations factors applied and their derivation, etc.</li> <li>Nature of quality control procedures adopted (eg standards, blanks, duplicates, external laboratory checks) and whether acceptable levels of accuracy (ie lack of bias) and precision have been established.</li> </ul>	<ul style="list-style-type: none"> <li>The analytical techniques used Fire Assay on 150g pulp samples.</li> <li>No geophysical tools were used to determine any element concentrations used in this Mineral Resource estimate.</li> <li>Sample preparation checks for fineness were carried out by the laboratory as part of internal procedures to ensure the grind size of 2mm was being attained. Laboratory QAQC includes the use of internal standards using certified reference material, and pulp replicates. No anomalous assays were noted in information provided to RPM or from discussions with the</li> </ul>

Criteria	JORC Code explanation	Commentary
<b>Verification of sampling and assaying</b>	<ul style="list-style-type: none"> <li><i>The verification of significant intersections by either independent or alternative company personnel.</i></li> <li><i>The use of twinned holes.</i></li> <li><i>Documentation of primary data, data entry procedures, data verification, data storage (physical and electronic) protocols.</i></li> <li><i>Discuss any adjustment to assay data.</i></li> </ul>	<p>Client.</p> <ul style="list-style-type: none"> <li>The QAQC results confirm that acceptable levels of accuracy and precision have been established for the Classifications applied.</li> <li>The Company has developed logging and sampling procedures that is based on the African experience of the local teams and subsequently reviewed by RPM during the site visits that confirmed the processes and protocols implemented giving the results a high level of confidence. The Company geologists log the core and RC samples according to the existing lithological, alteration and mineralogical nomenclature of the deposit as well as sulphide content. Photography and recovery measurements were carried out by assistants under a geologist's supervision. The logging for all RC holes is also recorded on a logging "chip-board", where the chips for each metre are glued to a board to form a visual log of the entire hole</li> <li>Twinned holes have not been drilled as not considered appropriate as the Company has been responsible for all holes.</li> <li>Logging records were mostly registered in physical format and were input into a digital format. The core photographs, collar coordinates and down the hole surveys were received in digital format.</li> <li>Assay values that were below detection limit were adjusted to equal half of the detection limit value. Un-sampled intervals were assumed to have no mineralisation and they were therefore set to blank in the database, however these are minimal.</li> <li>The selective original data review and site visit observations carried out by RPM did not identify any material issues with the data entry or digital data. In addition RPM considers that the onsite data management system meets industry standard which minimizes potential 'human' data-entry errors and no systematic fundamental data entry errors or data transfer errors.</li> </ul>
<b>Location of data points</b>	<ul style="list-style-type: none"> <li><i>Accuracy and quality of surveys used to locate drill holes (collar and down-hole surveys), trenches, mine workings and other locations used in Mineral Resource estimation.</i></li> </ul>	<ul style="list-style-type: none"> <li>All drill hole and trench collar locations were surveyed utilising the differential GPS methods by third party surveyors.</li> <li>RPM notes that the DGPS system utilised is typically within a 10 cm accuracy range which is suitable for the classification applied.</li> <li>The Client's drilling teams utilised the Reflex EZ-shot instrument to measure deviations in azimuth and inclination angles for all holes; however, vertical holes were not surveyed. The first measurement is taken at 5 m depth, and then at approximately every 30 to 50m depth interval and at the end of the hole.</li> <li>Small scale artisanal mining has been undertaken on several areas within</li> </ul>

Criteria	JORC Code explanation	Commentary
	<ul style="list-style-type: none"> <li><i>Specification of the grid system used.</i></li> <li><i>Quality and adequacy of topographic control.</i></li> </ul>	<p>the project. This mining is restricted typically to the upper 10m of the oxide material however is variable in depth and extent with recent underground mining occurring in the fresh rock. For AG area, the latest provided topographic survey models based on satellite imagery. In addition two key areas with known underground mining were depleted a further 20m. For AGP area, no significant UG mining has been undertaken as such the latest topography was utilised as the depletion.</p>
<b>Data spacing and distribution</b>	<ul style="list-style-type: none"> <li><i>Data spacing for reporting of Exploration Results.</i></li> <li><i>Whether the data spacing and distribution is sufficient to establish the degree of geological and grade continuity appropriate for the Mineral Resource and Ore Reserve estimation procedure(s) and classifications applied.</i></li> <li><i>Whether sample compositing has been applied.</i></li> </ul>	<ul style="list-style-type: none"> <li>Drill hole collars were generally spaced on an approximate 100 m by 50 m grid in both deposits with recent drilling including infill drilling on 50m by 50m spacing within AG with some closer spacing in the central core of AG.</li> <li>The drill hole spacing and distribution is considered sufficient to establish the degree of continuity appropriate for the Inferred and Indicated Mineral Resource estimation procedures. A combined composited file of the 5 largest lodes with the AG area was created for constructing variogram. Object 40 was also investigated which returned very similar variograms.</li> <li>The most prevalent sample lengths inside the mineralised wireframes was 1m and 2 m, and as a result, 2m was chosen as the composite length. The samples inside the mineralised wireframes were then composited to 2 m lengths</li> </ul>
<b>Orientation of data in relation to geological structure</b>	<ul style="list-style-type: none"> <li><i>Whether the orientation of sampling achieves unbiased sampling of possible structures and the extent to which this is known, considering the deposit type.</i></li> <li><i>If the relationship between the drilling orientation and the orientation of key mineralised structures is considered to have introduced a sampling bias, this should be assessed and reported if material.</i></li> </ul>	<ul style="list-style-type: none"> <li>No bias was interpreted to be introduced as most drill holes are angled to northwest in AG, which is approximately perpendicular to the orientation of the mineralised trends are interpreted being comprised of southeast-dipping lodes striking 30° dipping at varying angles of inclination typically between 60° and 80°.</li> <li>APG has recently been reinterpreted to have a westerly dipping orientation, as such recent holes have been drilled to the southeast. All previous holes were drilled to the northwest, however given the large drill spacing this is not consider to be a bias in the sampling and was considered during interpretation.</li> </ul>
<b>Sample security</b>	<ul style="list-style-type: none"> <li><i>The measures taken to ensure sample security.</i></li> </ul>	<ul style="list-style-type: none"> <li>Chain of custody is managed by the Client's senior site geologists and geotechnicians. Samples are stored in a core shed at site and samples were delivered to the laboratory by client geologists. Client employees</li> </ul>



Criteria	JORC Code explanation	Commentary
		have no further involvement in the preparation or analysis of the samples.
<b>Audits or reviews</b>	<ul style="list-style-type: none"> <li>The results of any audits or reviews of sampling techniques and data.</li> </ul>	<ul style="list-style-type: none"> <li>A review of sampling techniques was carried out on each site visit by RPM in July 2016 and July 2018 and again in October 2019.</li> </ul>

## Section 2 of the JORC Code, 2012 Edition – Table 1

Criteria	JORC Code explanation	Commentary
<b>Mineral tenement and land tenure status</b>	<ul style="list-style-type: none"> <li>Type, reference name/number, location and ownership including agreements or material issues with third parties such as joint ventures, partnerships, overriding royalties, native title interests, historical sites, wilderness or national park and environmental settings.</li> <li>The security of the tenure held at the time of reporting along with any known impediments to obtaining a license to operate in the area.</li> </ul>	<ul style="list-style-type: none"> <li>The Project is contained within three adjacent exploration licenses (Zoukougbeu, Zahibo and Issia licenses) which are currently held by third party companies, of which Tietto or its wholly owned subsidiaries are part owners. All resource are contained within the Zahibo tenement.</li> <li>The tenements are in good standing.</li> </ul>
<b>Exploration done by other parties</b>	<ul style="list-style-type: none"> <li>Acknowledgment and appraisal of exploration by other parties.</li> </ul>	<ul style="list-style-type: none"> <li>No exploration programs have been conducted by other parties on the Project.</li> <li>The license area was not historically known as a prospective region for gold, but recent artisanal workings revealed the presence of primary gold mineralisation in artisanal pits and small scale underground mining.</li> </ul>
<b>Geology</b>	<ul style="list-style-type: none"> <li>Deposit type, geological setting and style of mineralisation.</li> </ul>	<ul style="list-style-type: none"> <li>The AG-APG Deposits are located within the Proterozoic Birimian rocks of the Man shield. It is situated on the Daloa 1:200,000 geologic sheet, 30km west of Daloa. It is located in the Hana-Lobo belt, east of the Sassandra fault that marks the boundary between the Man shield (Archean) and Eburnean domain. The regional trend is NNE to NE.</li> <li>The AG-APG deposits resemble typical shear zone deposits of the West African granite-greenstone terrane. The deposits themselves are associated with a major regional shear zone and are developed in a granodiorite host. Mineralisation may be spatially related to the emplacement of intrusives. The gold mineralisation is mesothermal in origin and occurs as free gold in quartz vein stockworks and zones of silicification, associated with pyrite and chalcopyrite. The gold mineralisation is found in linear zones with the contacts showing evidence of shearing. Free gold is frequently observed. Alteration is weak to strong depending on the development of the system.</li> <li>Two types of deformation are present in the drill cores: ductile</li> </ul>

Criteria	JORC Code explanation	Commentary
		<p>deformation and brittle deformation. The gold mineralisation is related to deformed granodiorite, in shear zones, with sulphides (mainly pyrite and minor chalcopyrite) associated with visible gold. Alteration is characterized by chlorite, sericite, calcite, secondary quartz and disseminated pyrite. This assemblage is well developed in schistose, foliated rocks with presence of quartz veins or veinlets.</p>
<p><b>Drill hole information</b></p>	<ul style="list-style-type: none"> <li>• A summary of all information material to the understanding of the exploration results including a tabulation of the following information for all Material drill holes: <ul style="list-style-type: none"> <li>• easting and northing of the drill hole collar</li> <li>• elevation or RL (Reduced Level – elevation above sea level in metres) of the drill hole collar</li> <li>• dip and azimuth of the hole</li> <li>• down hole length and interception depth</li> <li>• hole length</li> </ul> </li> <li>• If the exclusion of this information is justified on the basis that the information is not Material and this exclusion does not detract from the understanding of the report, the Competent Person should clearly explain why this is the case.</li> </ul>	<ul style="list-style-type: none"> <li>• Drill hole locations are shown on the map within the body of this Mineral Resource report and the ASX release.</li> <li>• All information has been included in the appendices. No RC or DD drill hole information has been excluded however no AC drilling is utilised.</li> </ul>
<p><b>Data aggregation methods</b></p>	<ul style="list-style-type: none"> <li>• In reporting Exploration Results, weighting averaging techniques, maximum and/or minimum grade truncations (e.g. cutting of high grades) and cut-off grades are usually Material and should be stated.</li> <li>• Where aggregate intercepts incorporate short lengths of high grade results and longer lengths of low grade results, the procedure used for such aggregation should be stated and some typical examples of such aggregations should be shown in detail.</li> <li>• The assumptions used for any reporting of metal equivalent values should be clearly stated.</li> </ul>	<ul style="list-style-type: none"> <li>• Intervals are shown in detail. Drilling intervals are predominantly 1m and 2m.</li> <li>• AC, RC samples were collected as 1m samples from the cyclone, which were subsequently spear samples to form 2 m samples which were subsequently sent to the laboratory</li> <li>• Metal equivalent values are not being reported.</li> </ul>
<p><b>Relationship between mineralisation widths and intercept lengths</b></p>	<ul style="list-style-type: none"> <li>• These relationships are particularly important in the reporting of Exploration Results.</li> <li>• If the geometry of the mineralisation with respect to the drill hole angle is known, its nature should be reported.</li> <li>• If it is not known and only the down hole lengths are reported, there should be a clear statement to this effect (e.g. 'down hole length, true width not known').</li> </ul>	<ul style="list-style-type: none"> <li>• Most drill holes are angled to northwest at AG, which is approximately perpendicular to the orientation of the mineralised trends as all deposits have similar styles of mineralisation which was interpreted as being comprised of southeast-dipping lodes striking 30° dipping at varying angles of inclination typically between 60° and 80°.</li> <li>• APG has recently been reinterpreted to the westerly dip with changes to drilling orientation completed at such.</li> <li>• Sections are provided in the main body of the report and the press release</li> </ul>

Criteria	JORC Code explanation	Commentary
<b>Diagrams</b>	<ul style="list-style-type: none"> <li>• <i>Appropriate maps and sections (with scales) and tabulations of intercepts should be included for any significant discovery being reported. These should include, but not be limited to a plan view of drill hole collar locations and appropriate sectional views.</i></li> </ul>	<p>however exploration results are not being reported</p> <ul style="list-style-type: none"> <li>• Relevant diagrams have been included within the Mineral Resource report main body of report and ASX release However exploration results are not being reported</li> </ul>
<b>Balanced Reporting</b>	<ul style="list-style-type: none"> <li>• <i>Accuracy and quality of surveys used to locate drill holes (collar and down-hole surveys), trenches, mine workings and other locations used in Mineral Resource estimation.</i></li> <li>• <i>Where comprehensive reporting of all Exploration Results is not practicable, representative reporting of both low and high grades and/or widths should be practiced to avoid misleading reporting of Exploration Results.</i></li> </ul>	<ul style="list-style-type: none"> <li>• All drill hole and trench collar locations were surveyed utilising the differential GPS methods by third party surveyors. DGPS system utilised it typically within 10 cm accuracy range.</li> <li>• Drilling teams utilised the Reflex EZ-shot instrument to measure deviations in azimuth and inclination angles for all holes; however, vertical holes were not surveyed. The first measurement is taken at 6 m depth, and then at approximately every 30m depth interval and at the end of the hole.</li> </ul>
<b>Other substantive exploration data</b>	<ul style="list-style-type: none"> <li>• <i>Other exploration data, if meaningful and material, should be reported including (but not limited to): geological observations; geophysical survey results; geochemical survey results; bulk samples - size and method of treatment; metallurgical test results; bulk density, groundwater, geotechnical and rock characteristics; potential deleterious or contaminating substances.</i></li> </ul>	<ul style="list-style-type: none"> <li>• All interpretations for each deposit are consistent with observations made and information gained during drilling at the project.</li> <li>• Feasibility studies are underway with a PFS completed in Q1 2021</li> <li>• Work completed to date <b>has not identified</b> any potential deleterious or contaminating substances.</li> </ul>
<b>Further work</b>	<ul style="list-style-type: none"> <li>• <i>The nature and scale of planned further work (e.g. tests for lateral extensions or depth extensions or large- scale step-out drilling).</i></li> <li>• <i>Diagrams clearly highlighting the areas of possible extensions, including the main geological interpretations and future drilling areas, provided this information is not commercially sensitive.</i></li> </ul>	<ul style="list-style-type: none"> <li>• Further infill and extensional drilling is planned and is in the process of being executed</li> <li>• Diagrams accompany this release</li> </ul>