

7<sup>th</sup> June 2021

## **RESOURCE MINING COMPLETES MAPPING AND SOILS SAMPLING AT KABULWANYELE NICKEL LATERITE PROJECT TANZANIA**

Resource Mining Corporation Limited (ASX: **RMI**), is pleased to provide an update on the recently completed initial field program at its Tanzania Kabulanywele Nickel Project located in Mpanda District, Tanzania. The initial exploration program included comprehensive geological mapping of the tenement area in conjunction with systematic soils and rock sampling.

### **Highlights**

- The mapping program has successfully confirmed the presence of previously mapped nickel laterites in the tenement area.
- Delineated laterite presence in an area; total length of 2km with an average width of 0.8km.
- The mapping program identified the presence of laterites outside the current tenement boundary. Application has been made for an additional prospecting licence to cover the newly identified laterite extension.
- A total of 264 soils and rock samples collected from the project area have been submitted to SGS Mwanza for assay sample preparation with final chemical assaying in SGS's South African laboratories.
- Chemical assay results are expected to be available within one month.

Resource Mining Corporation is pleased to provide the following exploration update on its recently acquired Kabulanywele Nickel Project in Tanzania. The Project is located approximately 35km from the western shore of Lake Tanganyika. The area is part of the western limb of East African Rift systems.

RMI'S Tanzanian based exploration team recently completed a comprehensive mapping program in conjunction with a systematic soil and rock sampling program across the Project area. The exploration program conducted concurrently, was completed within the allocated budget and timeframe.

Managing Director, Warwick Davies said "the initial results from our Tanzanian based exploration crew are very encouraging and reflect the confidence of the team in the prospectivity of the exploration area".

### **Mapping**

The geological mapping program concentrated in the area where historical exploration had identified the presence of Nickel laterite mineralization. Continuous ferruginous siliceous laterites have been mapped in a hilly area which form three hill grouping (see Figures 1 and 2 below). Geological interpretation suggests the laterites resulted from the strongly weathered mafic-ultramafic layered intrusion. The three hills extend for a length of 2.0km NW-SW direction with an average width of 0.8km. Maximum thickness of laterization was observed on the upper areas of the hills with laterite horizons thickness ranging between 20 –35m.



Figure 1: Ferruginous Siliceous Laterite



Figure 2: Serpentine Saprolitic Laterite

The mapping program identified additional laterite mineralisation outside of the granted exploration tenements. RMI has subsequently filed a new application to cover the newly identified mineralised area. Figure 3 shows the mapped geology, newly applied license area along with the completed soil sampling locations.

### **Soil sampling**

A total of 264 samples were collected systematically from the project area. The samples have been dispatched to SGS Mwanza for sample preparation and thereafter will be shipped to SGS South Africa for chemical analysis.

### **New Prospecting License Application**

An application for a new additional prospecting license has been made to cover the area where laterite mineralization has been identified (see Figure 3 below for the recent application area). The license application covers an area of 0.27km<sup>2</sup> and essentially includes the majority of identified laterites outside the granted tenements.



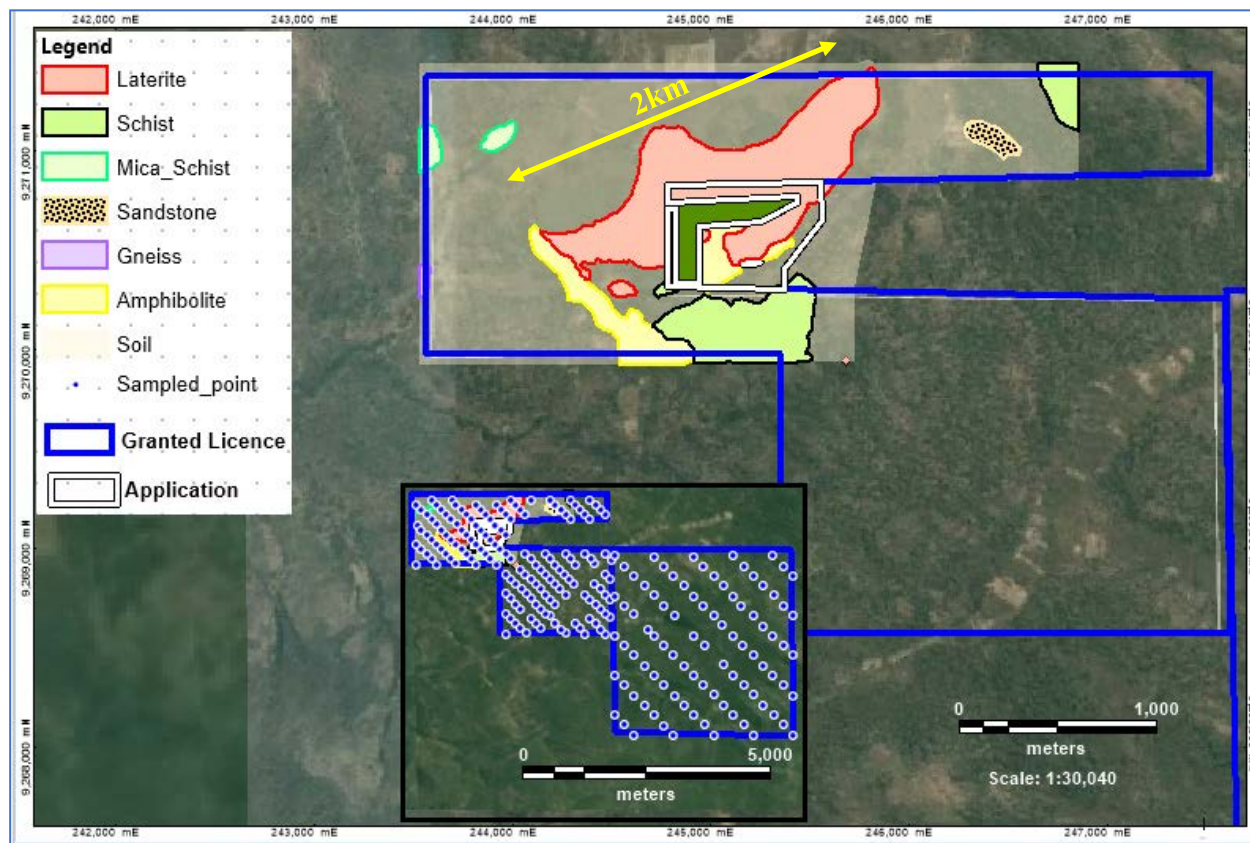


Figure 3: Mapped Area Including, Geology, Soil Sample Locations and New License Application Area

## Future Work Programs

After receipt and review of the chemical assay results of the soils sampling program and assuming positive results, the Company is planning to conduct an aircore drilling program to test any targets generated from the assay results.

Yours sincerely



Warwick Davies  
Managing Director

**Authorised for lodgement by Warwick Davies, Managing Director**

## **ABOUT RESOURCE MINING CORPORATION**

**The Resource Mining Group holds two Projects:**

### **1. Wowo Gap Nickel Laterite Project**

RMI holds 100% of the Wowo Gap Nickel Laterite Project located 200 kilometres from the PNG capital of Port Moresby. Nickel and cobalt are the principal elements of economic significance in the Wowo Gap resource. This tenement licence is currently under renewal.

### **2. Kabulwanyele Nickel Project**

In February 2021, the RMI acquired 75% of the issued capital of Eastern Nickel Pty Ltd (ENPL), an Australian company. The remaining 25% is held by Kabunga Holdings Pty Ltd. ENPL holds 99% of the shares in Tanzanian subsidiary, Eastern Nickel Tanzania Limited (ENT). The remaining 1% is held by Leticia Herman Kabunga, a Tanzanian resident.

ENT holds a 100% interest in the Kabulwanyele Nickel Project (KNP) located approximately 45 km south west of Mpanda, the administrative centre for the Katavi Region in Western Tanzania. The KNP comprises 2 x granted Prospecting Licences, PL/11534/2021 and PL/11535/2021, covering approximately 20.5 square kilometres in total. The KNP covers part of the Ubendian rock system of lower Proterozoic rocks, comprising mainly of acidic gneisses, granulites, amphibolites and ultramafic rocks. Laterite hills at Kabulwanyele are prospective for nickel, cobalt and manganese. The area has not been subject to modern exploration.