



ASX Announcement

10<sup>th</sup> June 2021

## 4,000m Diamond Drill Program commences at Rosie

### HIGHLIGHTS

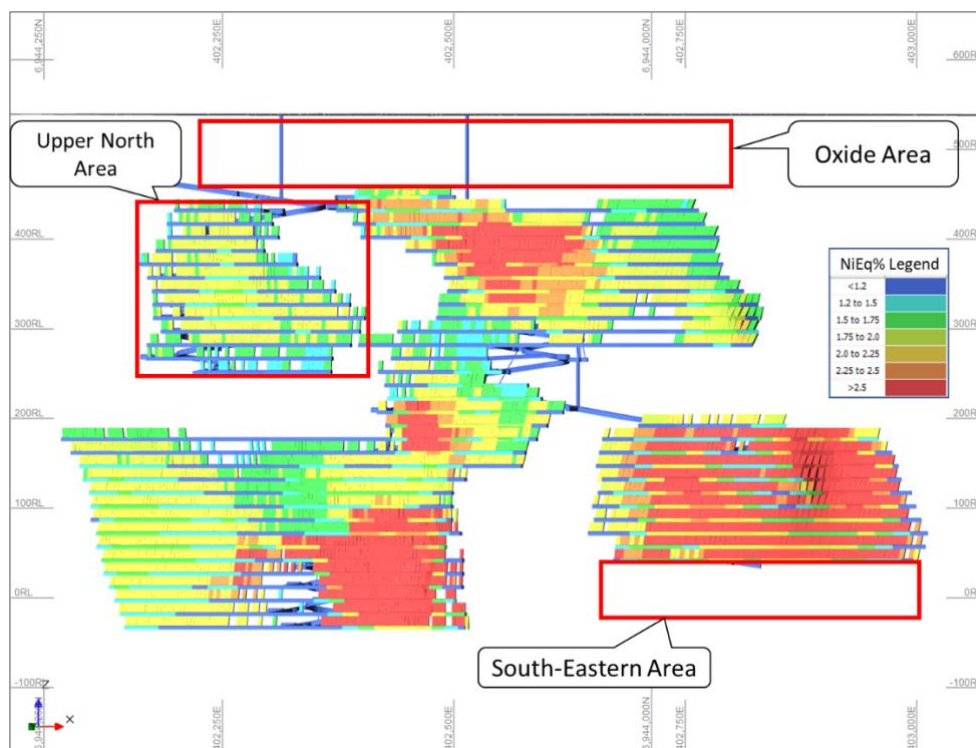
#### Rosie Project (100% DKM)

- 4,000m diamond drill program underway at the Rosie Nickel Project based on guidance from the Rosie Nickel Sulphide Scoping Study
- Drilling aims to:
  - Increase confidence in mineralisation in the Upper North area
  - Test at depth below south eastern area (previously known as Nariz)
  - Collect PGE rich oxide sample for PGE recovery/metallurgical testwork from near surface
- Results from this program will be incorporated into an updated nickel resource and mining model.

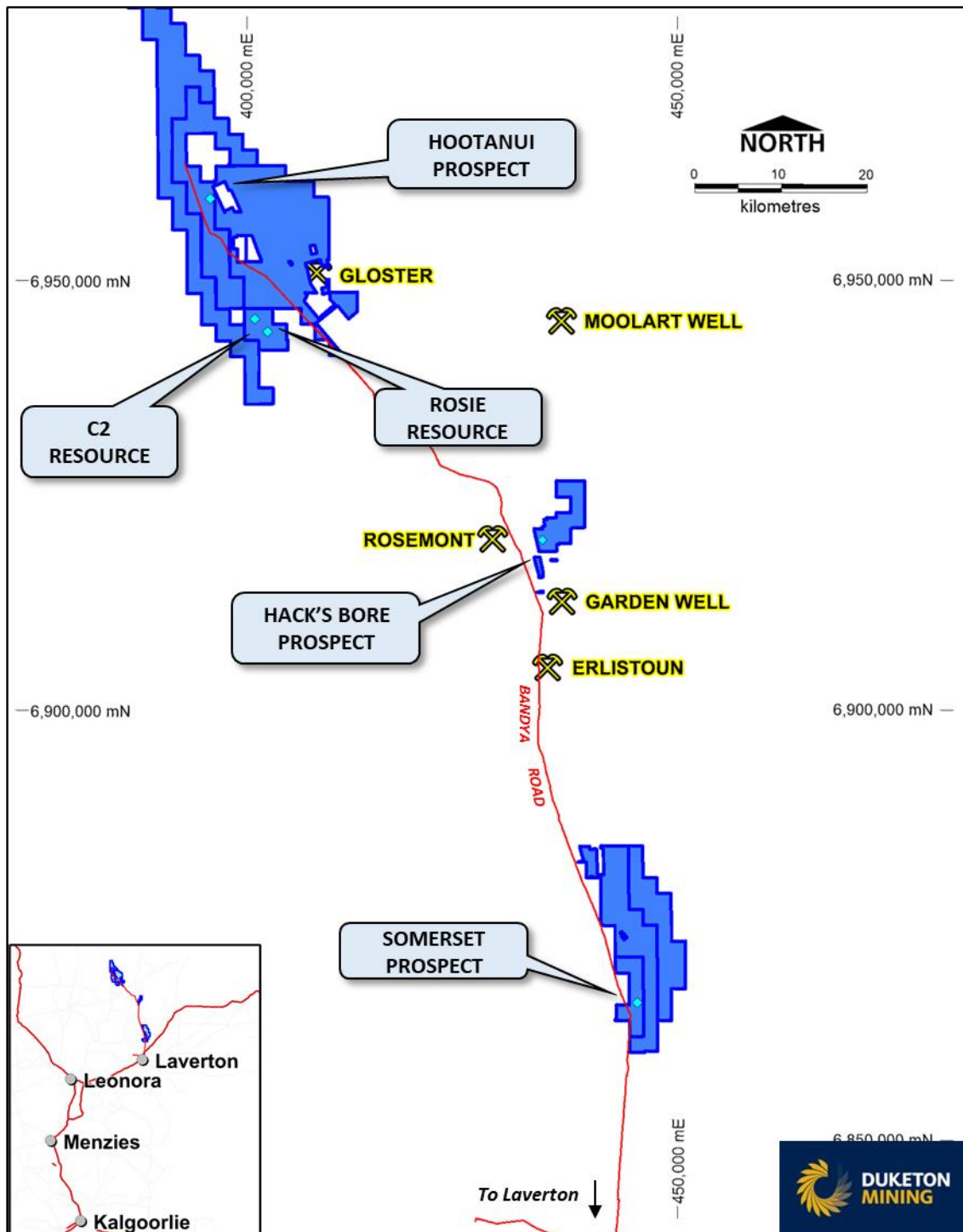
Duketon Mining Ltd (DKM) is pleased to announce the commencement of a 4,000m diamond drill program at the Rosie Nickel Project. The program is designed to increase confidence in mineralisation in the upper north area, test at depth below the south eastern area (previously known as Nariz) and collect PGE rich oxide material from directly above the sulphide deposit for assay and PGE recovery/metallurgical testwork (see Figure 2). These three areas have been identified from the Rosie Nickel Sulphide Scoping Study as having potential upside by either impacting early cash flow or extending the life of mine (see ASX announcement 28<sup>th</sup> April 2021).



**Figure 1: Drill rig at Rosie Project**



**Figure 2: Stope grade heat map with areas of drilling**



**Figure 3: Plan of DKM Tenements showing Ultramafic, Nickel Resources and Prospects**



**Authorised for release by:**

**Stuart Fogarty**

Duketon Mining Limited - Managing Director

+61 8 6315 1490

**PREVIOUSLY REPORTED INFORMATION**

*This report includes information that relates to exploration results which were prepared and first disclosed under the JORC Code 2012. The information was extracted from the Company's previous ASX announcements as follows:*

- 28 April 2021

*The Company confirms that it is not aware of any new information or data that materially affects the information included in the original market announcements. The Company confirms that the form and context in which any Competent Person's findings are presented have not been materially modified from the original market announcements.*