



Investor Presentation

June 2021





Corporate

Share Capital (ASX: JRL)	53.4M
Share Price (11/06/2021)	A\$2.82
Unlisted Options (40c, 50c, \$1.00, \$3.50)	6.4M
Market Cap (11/06/2021)	A\$150.5M
Cash/Liquids (31/03/2021)	A\$12.7M

Major Shareholders

L G Dudfield	25.7%
Kale Capital Corporation Pty Ltd	5.7%
National Nominees Limited	5.0%
Kevrex Pty Ltd	3.7%
CS Third Nominees Pty Ltd	3.5%

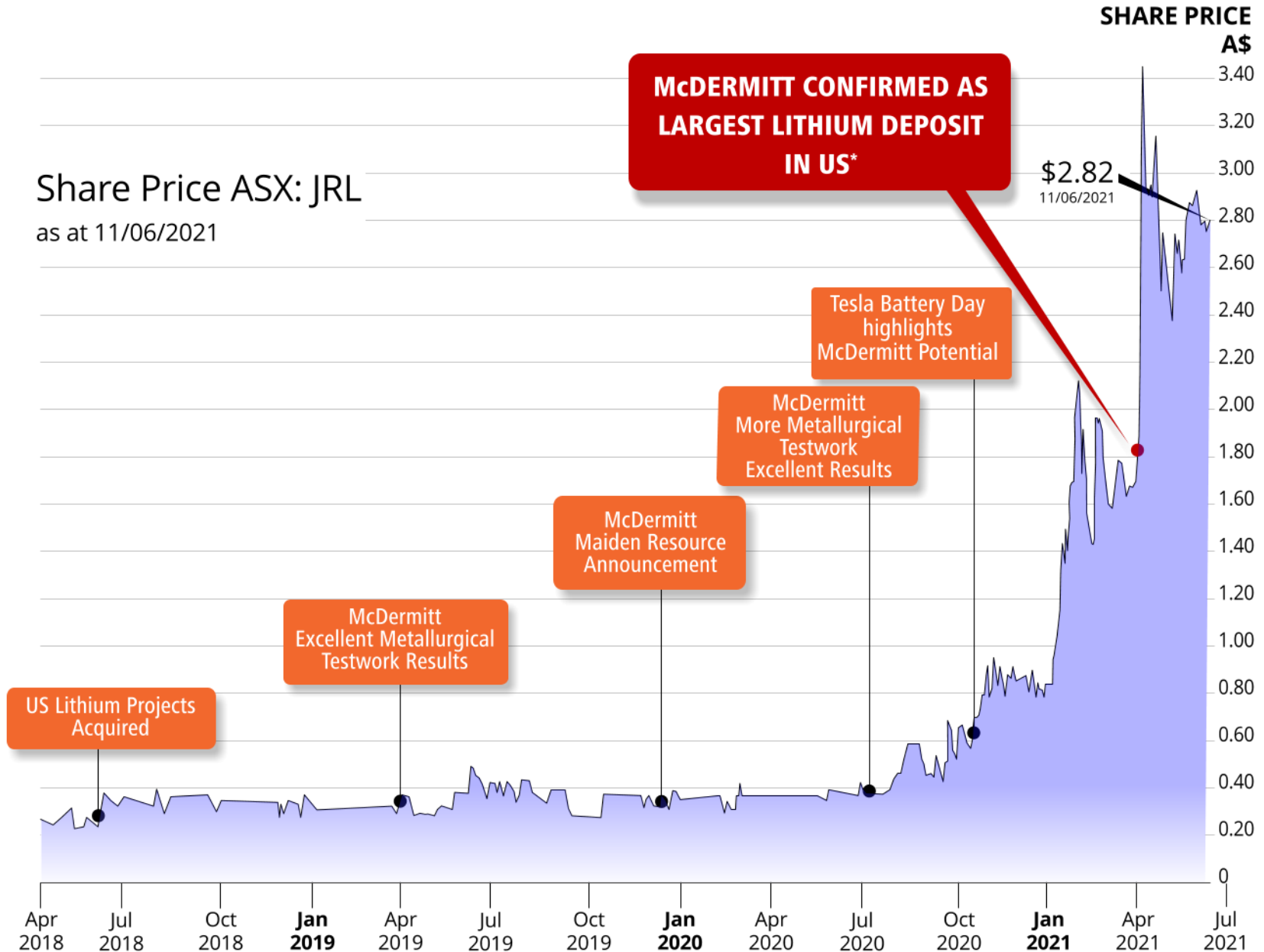
Board/Management

Chairman	Justin Mannolini
Executive Director	Lindsay Dudfield
Executive Director & Company Secretary	Trish Farr
Chief Executive Officer	Karen Wellman

A public company with the primary objective of creating wealth for shareholders through the discovery of world-class mineral deposits

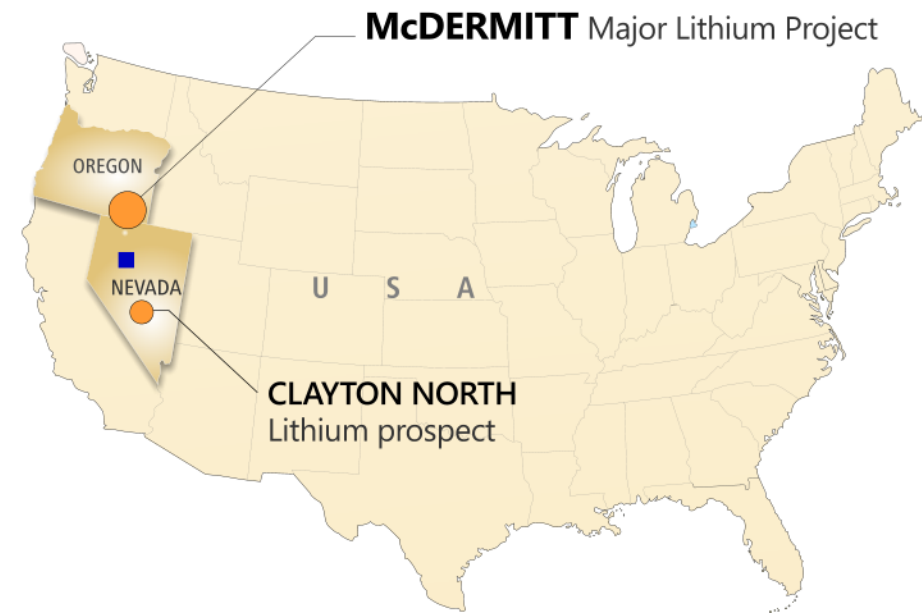
Share Price ASX: JRL

as at 11/06/2021



Refer *08/04/2021, "Upgraded Mineral Resource confirms McDermitt as the largest lithium deposit in the USA"

Strategic Project Exploration Australia and US



Strong, diverse portfolio of 100% JRL owned projects

Potential for Gold, Nickel, Lithium, Magnesite and Iron Ore

Strategic investments in Uranium, Nickel, Gold & Copper

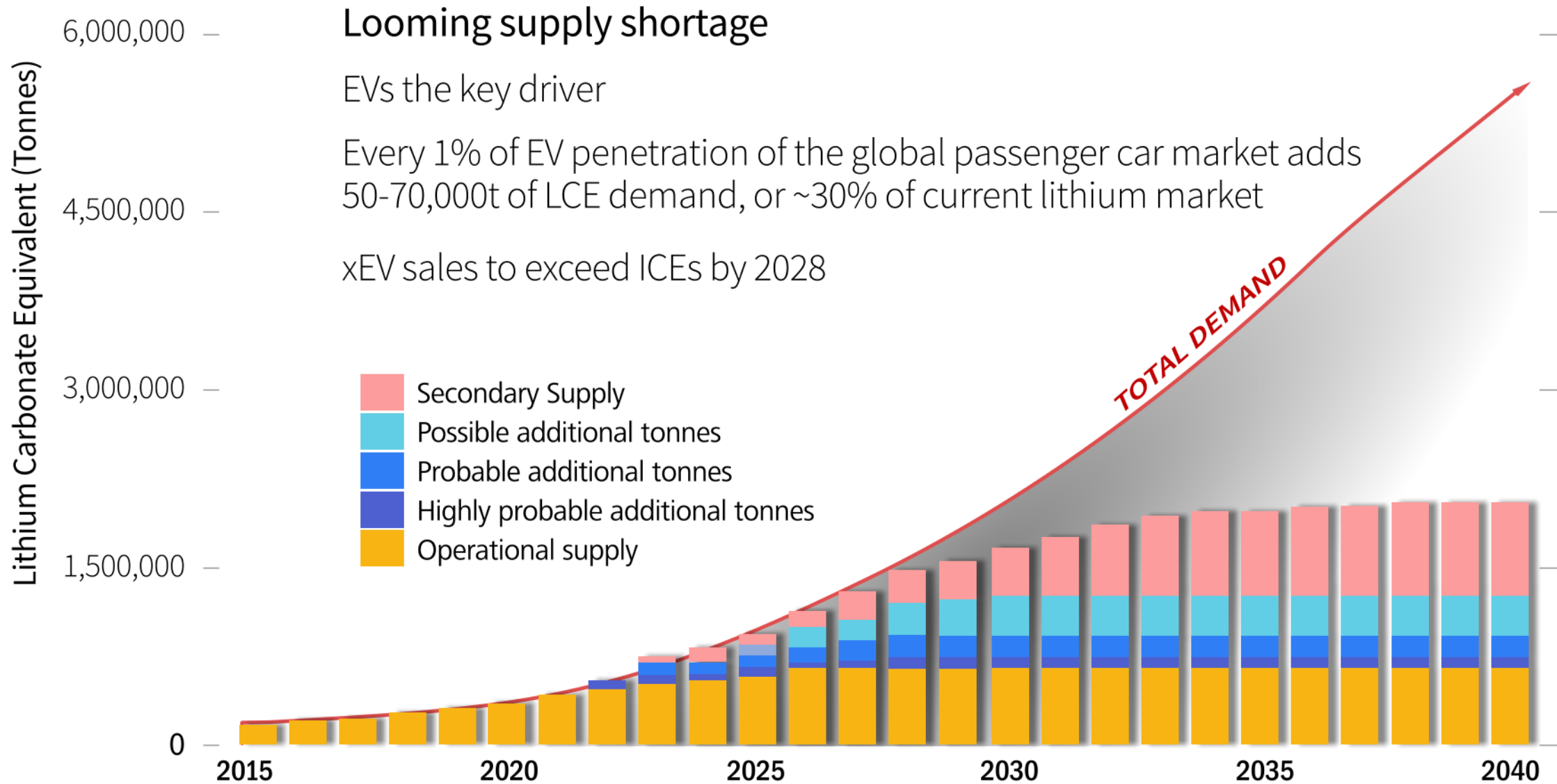
Substantial McDermitt Lithium project

Indicated + Inferred Mineral Resource with huge upside

Strong Government support for large Lithium deposits

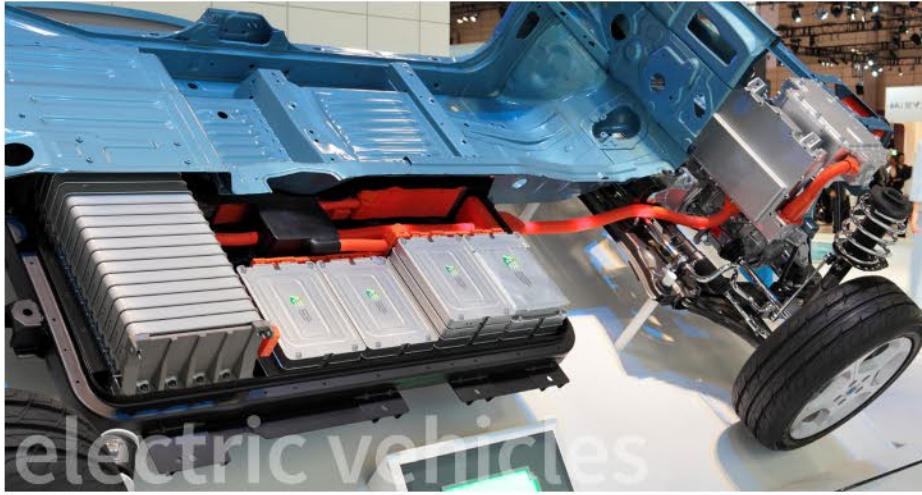
Tesla's localisation of cathode production in US highlights strategic value of McDermitt

Lithium Supply / Demand



Source: Benchmark Mineral Intelligence (2020)

Biden's election very positive for US Lithium



Focussed attention on reducing carbon emissions via renewables - EVs and energy storage the key drivers

Lithium demand expected to increase significantly to meet emissions targets with uptake of Li-ion batteries for EVs and energy storage

Biden has pledged **Zero Emissions** by 2050

\$US2 Trillion spend on **EV infrastructure** and other carbon reduction projects

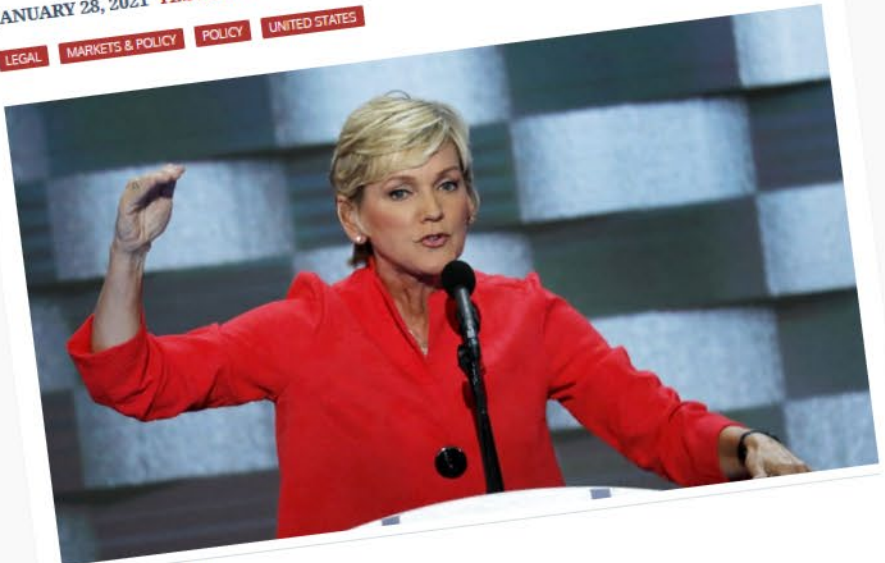
Bi-partisan support for development of **US critical mineral projects** including lithium

Granholt focuses on jobs and clean tech in DOE confirmation hearing

Former Michigan Gov. Jennifer Granholm told a Senate confirmation hearing that she wants to use her role as Energy Secretary to bring cleantech jobs to the US, achieve net-zero carbon emissions by 2050, and invest in tech through DOE loan programs.

JANUARY 28, 2021 TIM SYLVIA

LEGAL MARKETS & POLICY POLICY UNITED STATES

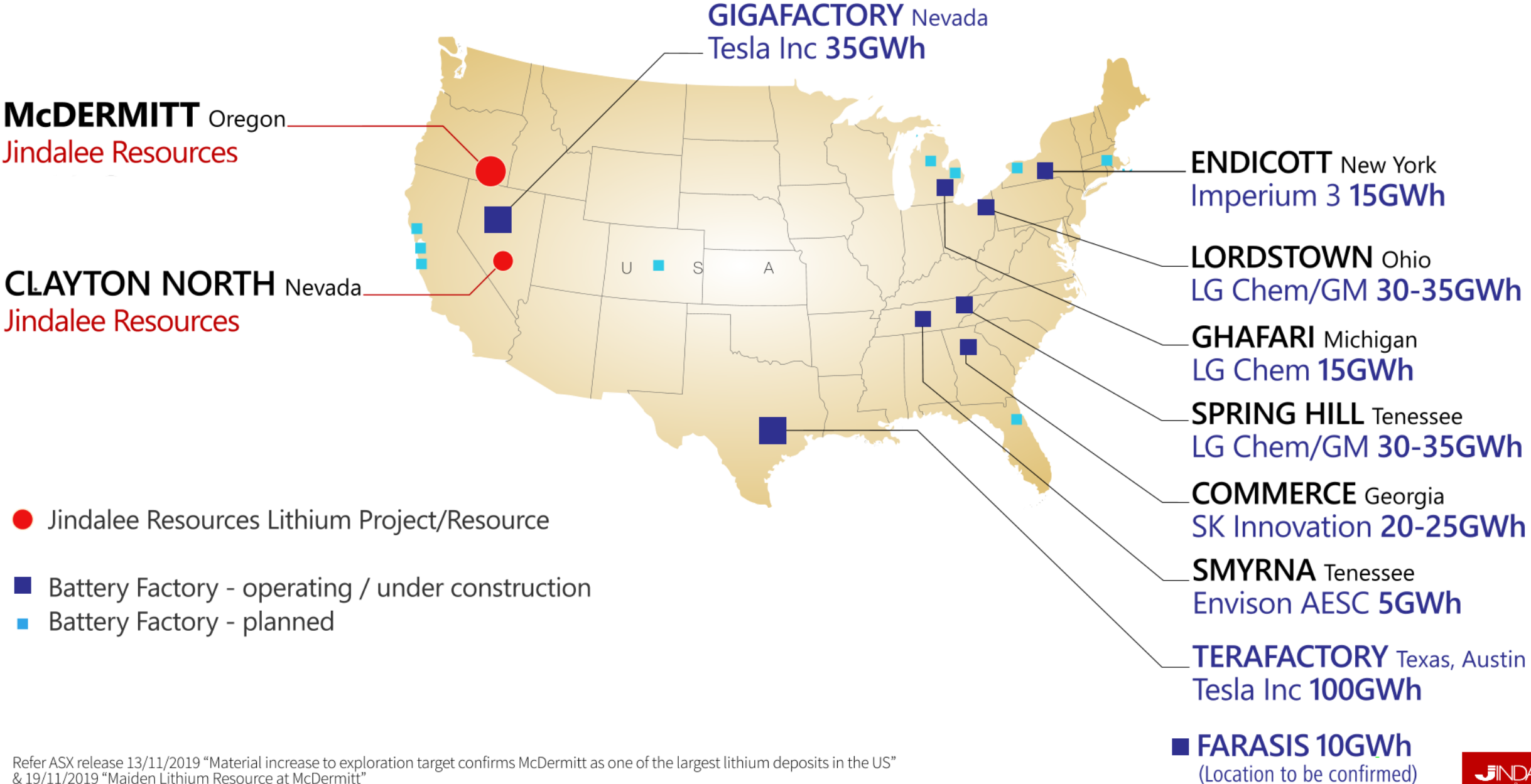


Jennifer Granholm

“We can buy electric car batteries from Asia, or we can make them in America.”



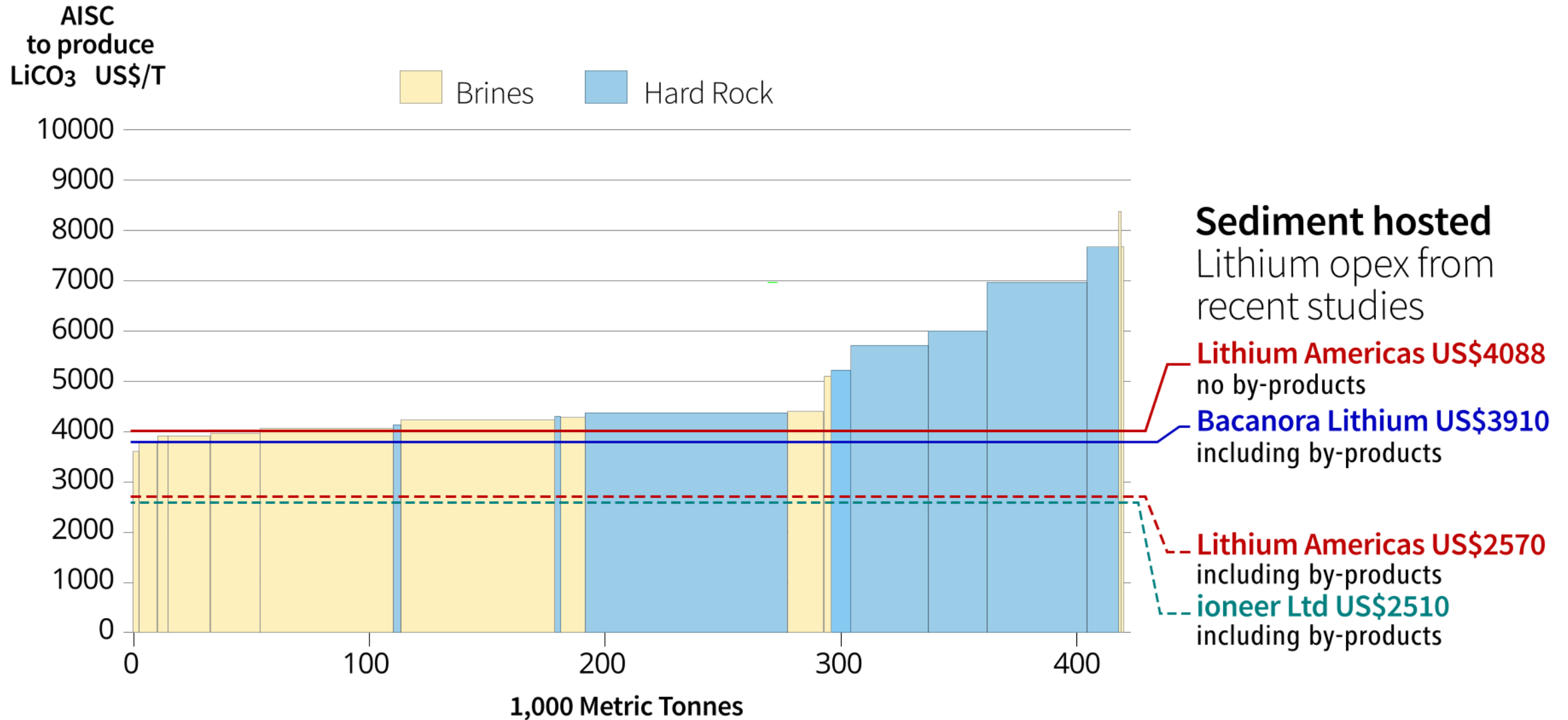
USA Planned Battery Output (as at June 2021)



Refer ASX release 13/11/2019 "Material increase to exploration target confirms McDermitt as one of the largest lithium deposits in the US" & 19/11/2019 "Maiden Lithium Resource at McDermitt"

Why Sediment Hosted Lithium Deposits

Long life, low cost sources of battery chemicals

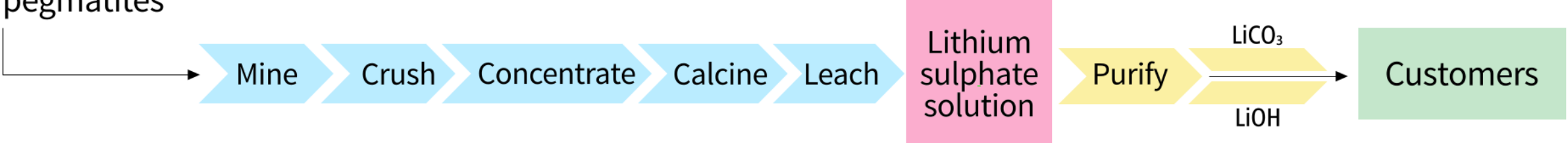


Sedimentary Deposits short cut to lower costs

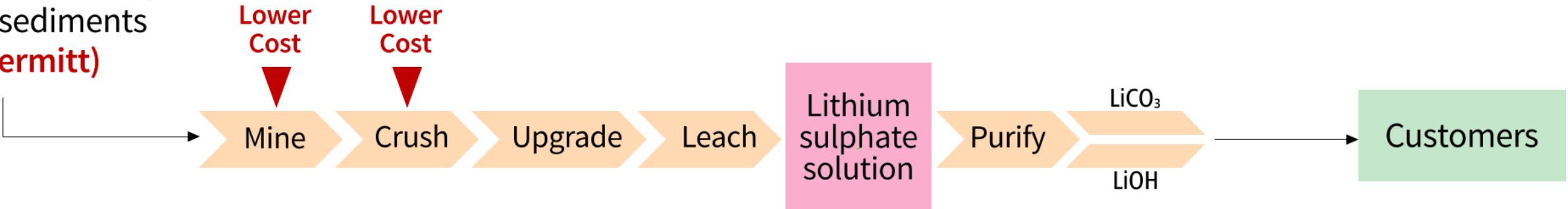
Lithium recovery from **brines**



Lithium recovery from **pegmatites**



Lithium recovery from **sediments (McDermitt)**



Jindalee - 2 US Lithium projects

McDermitt - Oregon. Jindalee's US flagship project
Priority resource development

Clayton North - Nevada. Pre-exploration planning

McDermitt:

Large project area -100% JRL owned claims cover 54.6km² (21miles²)

Indicated + Inferred Mineral Resource: **1.43 Bt @ 1,320 ppm Lithium**
(1,000ppm Li cut-off)

Potential for long life - low cost mining operation. Value proposition

The largest Lithium deposit in the US

Development of McDermitt resource could help make US self sufficient in Lithium



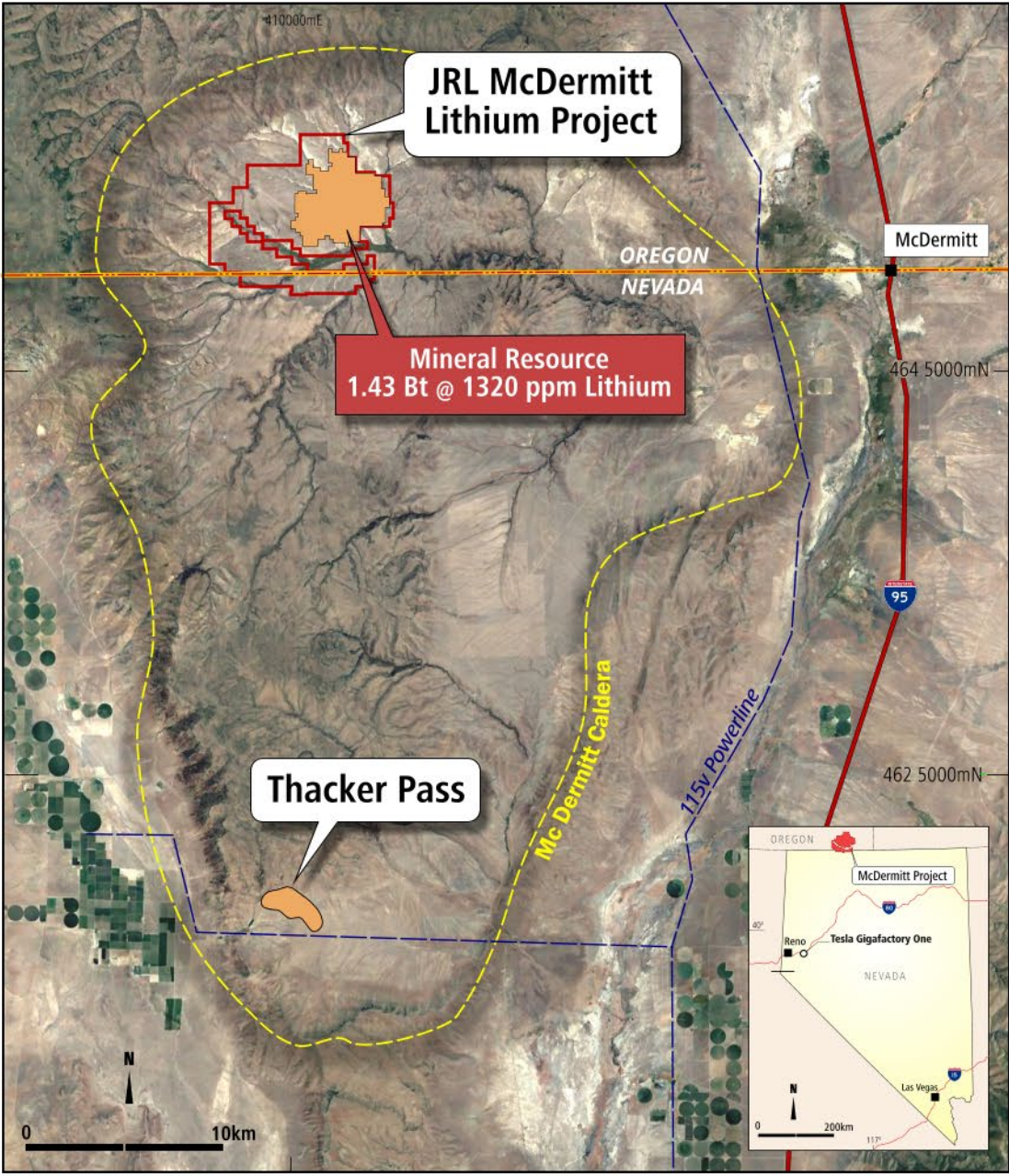
McDermitt Caldera - a Lithium “Hot Spot”

Caldera was an active volcanic centre 16.4 Myr ago

Hosts the largest Lithium deposits in the US

McDermitt	(ASX: JRL)	10.1 Mt LCE
Thacker Pass	(TSX: LAC)	8.6 Mt LCE

Excellent potential to grow both deposits



Refer ASX release, 08/04/2021, "Upgraded Mineral Resource confirms McDermitt as the largest Lithium deposit in the USA"

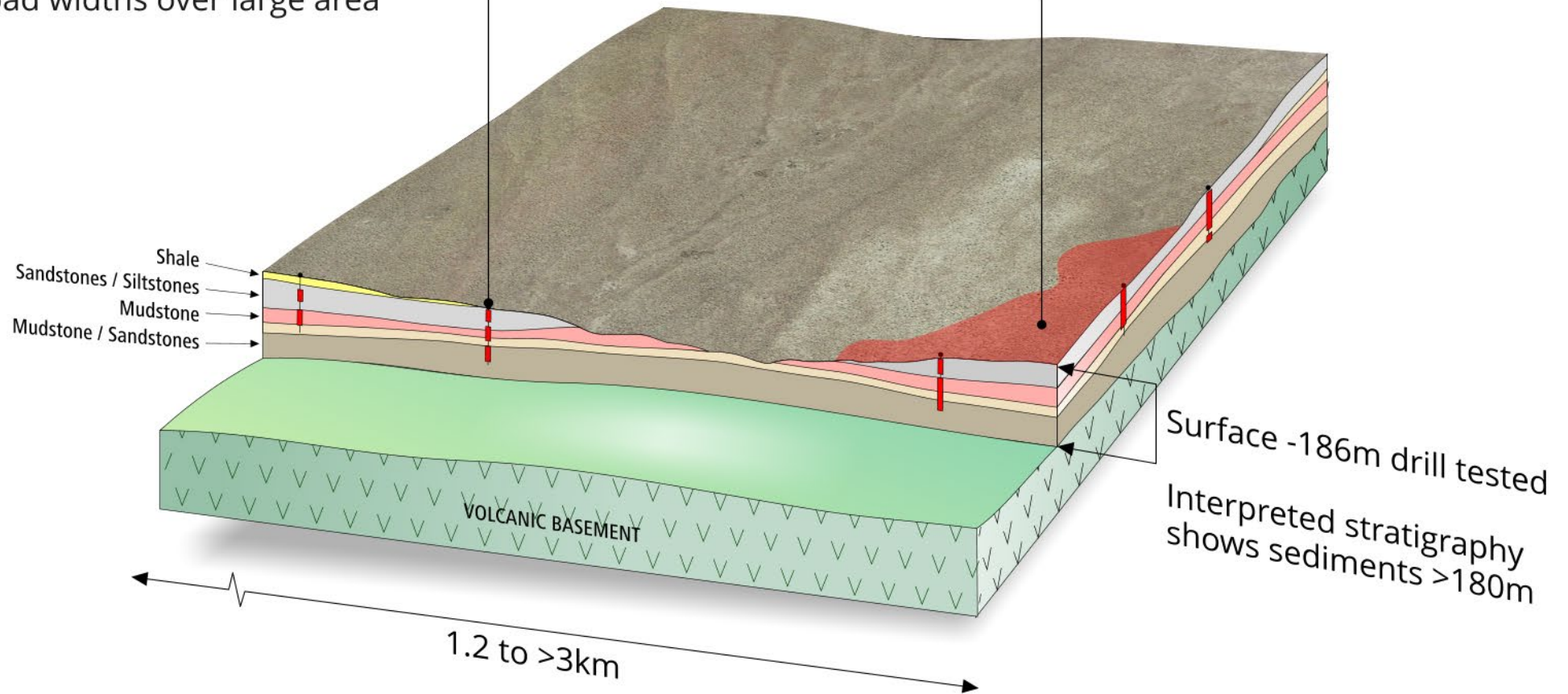
McDermitt Lithium bearing sediments at surface



McDermitt Simplified schematic section

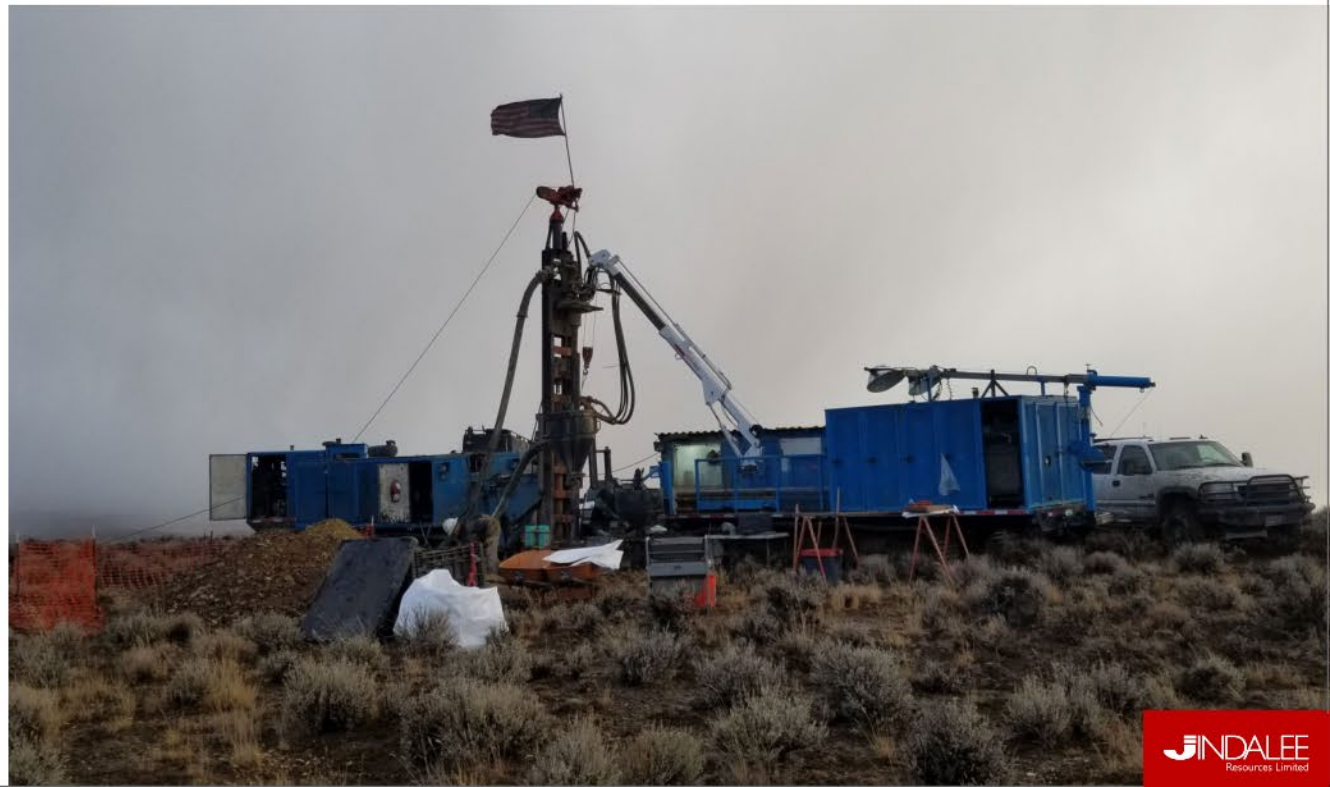
Lithium intercepts in all 29 drillholes
Broad widths over large area

Lithium mineralisation at surface
Near surface high grade zones



not to scale

McDermitt 2020 drilling



McDermitt Low Cost Mining

TYPICAL DRILL CORES

Flat lying sediments confirmed in all core holes

Soft, low strip ratio

Amenable to low cost mining and crushing

Excellent metallurgical results

MDD001 14.0m - 16.7m

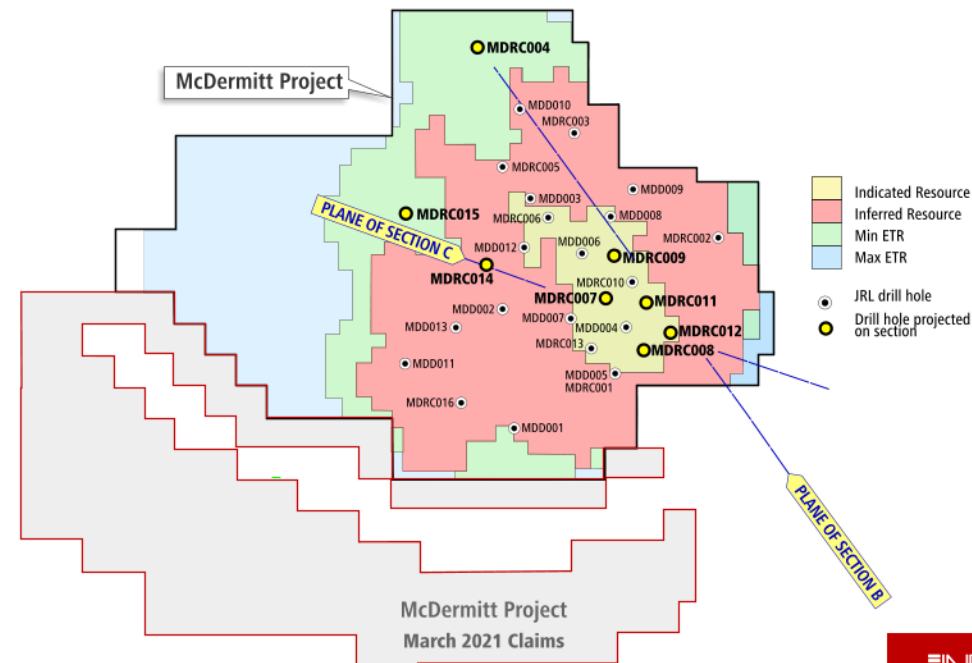
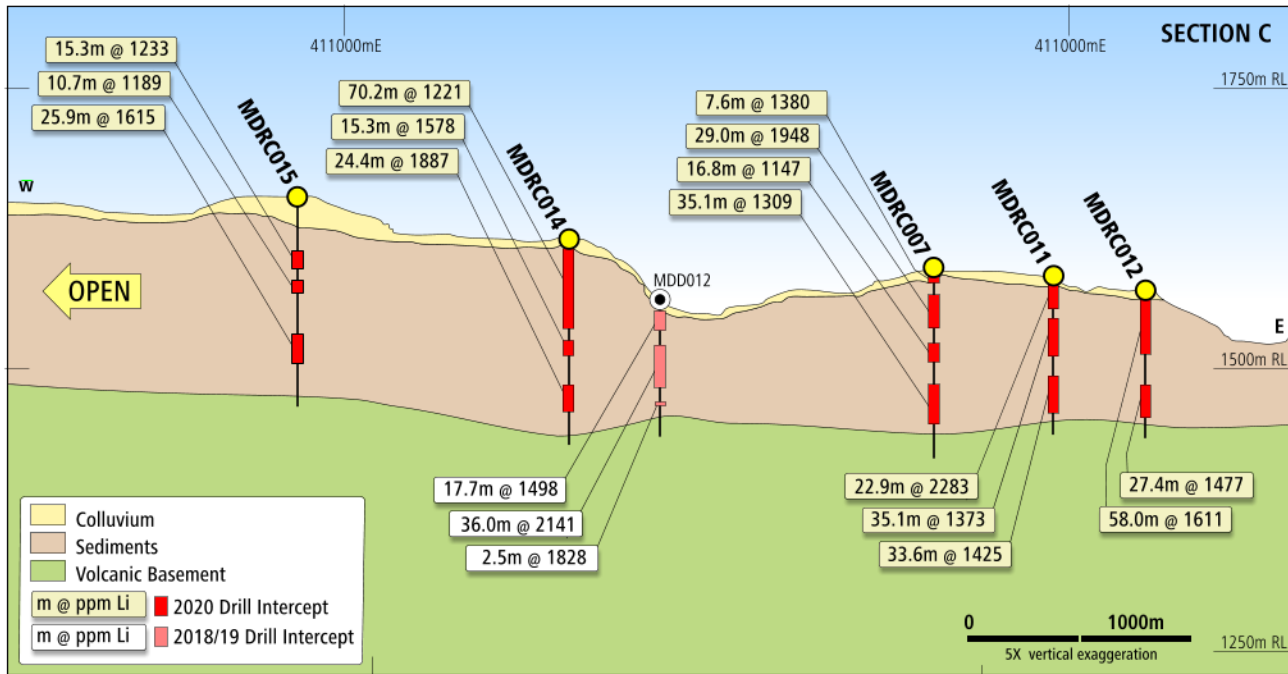
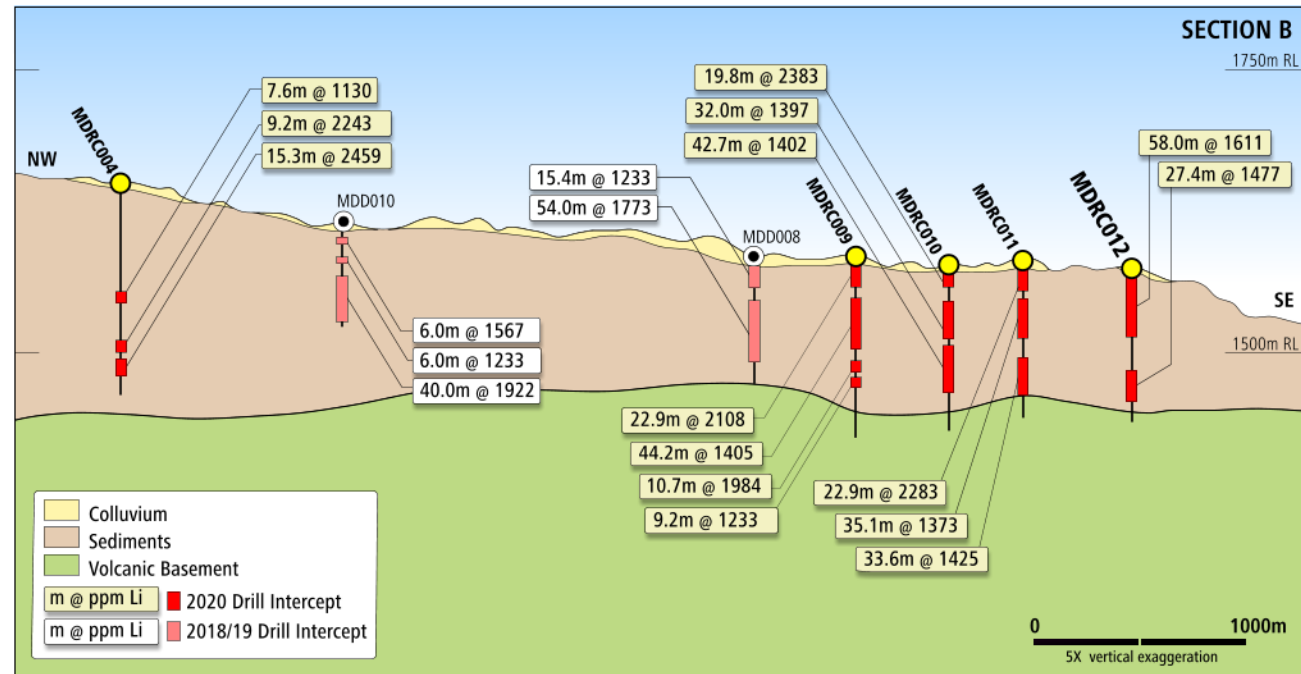


MDD006 36.2m - 39.1m



McDermitt 2020 Drilling

Consistent Lithium mineralised intercepts across large area



McDermitt Upgraded Resources and ETR

Indicated + Inferred Mineral Resource

1.43 Bt @ 1320 ppm Lithium

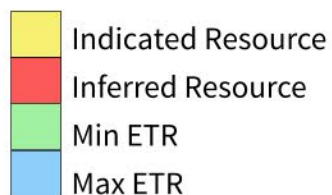
(1000 ppm Li cut-off)

Exploration Target Range (ETR)

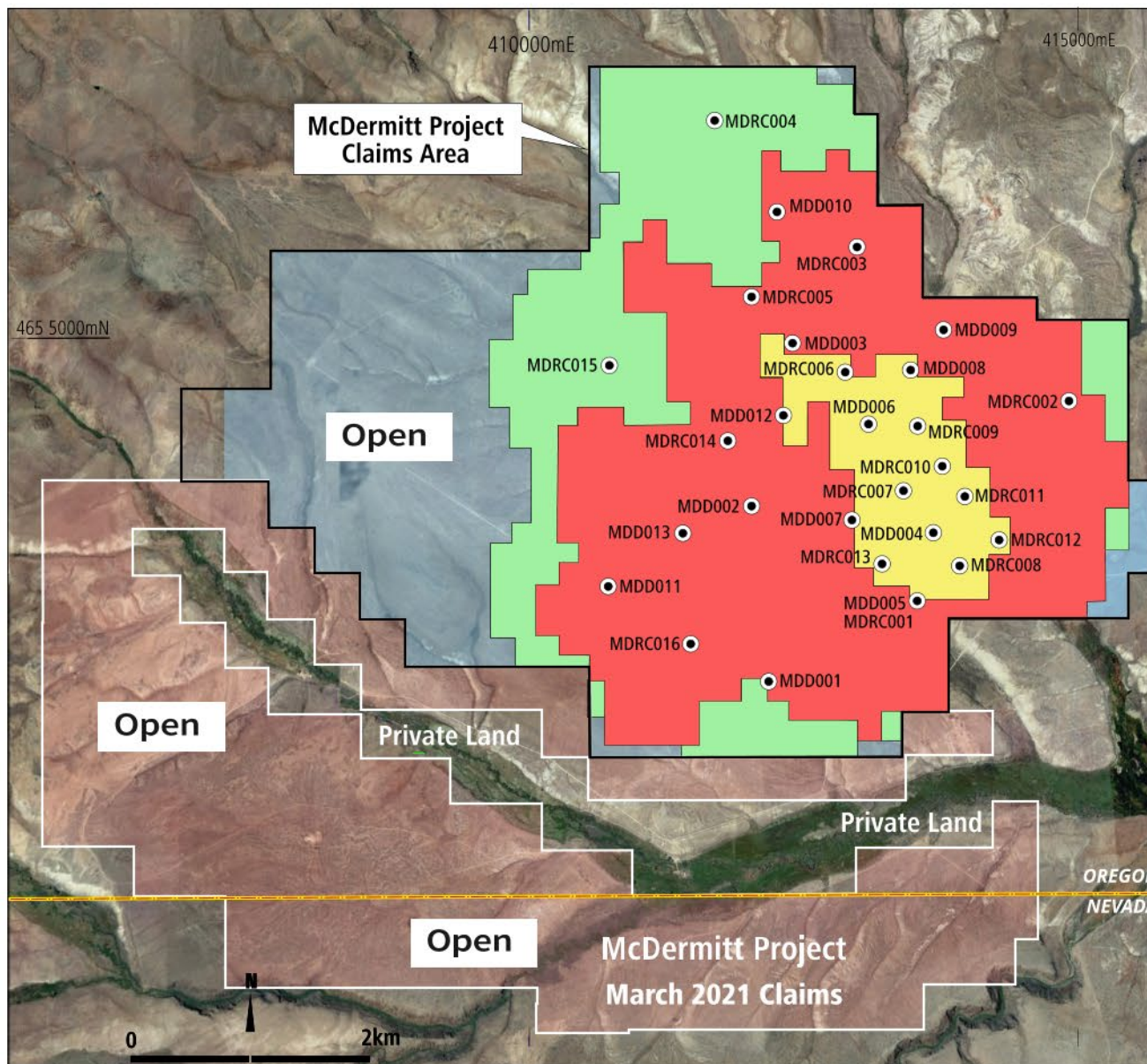
1.3 - 2.3 Bt @ 1100 -1500 ppm Lithium

(1000 ppm Li cut-off)

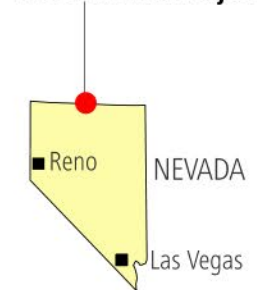
Note that the potential quantity and grade of the Exploration Target is conceptual in nature, there has been insufficient exploration to estimate a Mineral Resource and it is uncertain if further exploration will result in the estimation of a Mineral Resource.



● JRL drill hole



McDermitt Project



Refer ASX release, 08/04/2021, "Upgraded Mineral Resource confirms McDermitt as the largest Lithium deposit in the USA"

McDermitt Exploration Target Range (ETR)

Upgraded Mineral Resource confirms McDermitt as the largest Lithium deposit in the USA

Cut-Off Grade (ppm Li)	Indicated Resource			Inferred Resource			Indicated + Inferred Resource		
	Tonnage (Mt)	Li Grade (ppm Li)	LCE (Mt)	Tonnage (Mt)	Li Grade (ppm Li)	LCE (Mt)	Tonnage (Mt)	Li Grade (ppm Li)	LCE (Mt)
500	283	1,340	2.0	2,020	1,130	12.1	2,300	1,150	14.1
1,000	233	1,430	1.8	1,200	1,300	8.3	1,430	1,320	10.1
1,500	73	1,910	0.7	240	1,750	2.2	313	1,790	3.0
1,750	44	2,110	0.5	85	2,000	0.9	129	2,040	1.4
2,000	23	2,310	0.3	34	2,200	0.4	57	2,240	0.7

McDermitt Exploration Target Range (ETR)

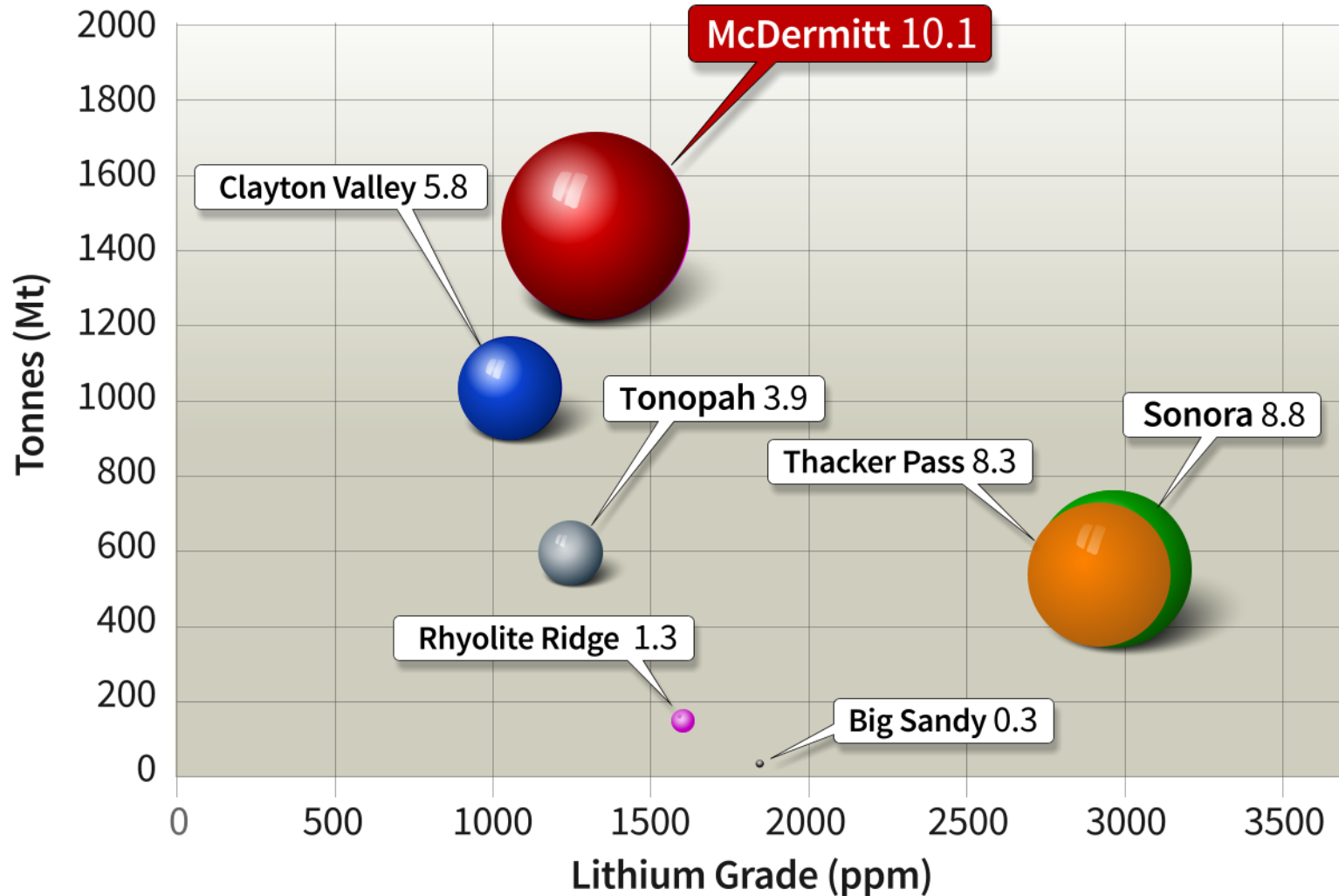
Large ETR highlights potential for significant increases to the Resource

Cut Off Grade (ppm Li)	Exploration Target Range (ETR)			
	Lower Limit (Mt)	Upper Limit (Mt)	Lower Grade (ppm Li)	Upper Grade (ppm Li)
500	2,300	4,500	800	1,200
1,000	1,300	2,300	1,100	1,500
1,500	270	390	1,500	1,900
1,750	100	140	1,700	2,100
2,000	30	40	1,900	2,300

Note that the potential quantity and grade of the Exploration Target is conceptual in nature, there has been insufficient exploration to estimate a Mineral Resource and it is uncertain if further exploration will result in the estimation of a Mineral Resource.

Sediment Hosted Lithium Deposits

Tonnes v Grade (contained LCE indicated by size of bubble)



DEPOSIT	OWNER	COG (ppm Li)
McDermitt	ASX: JRL	1000
Sonora	AIM: BCN	1000
Thacker Pass	TSX: LAC	2000
Clayton Valley	TSX: CYP	900
Tonopah	TSX: LI	1000
Rhyolite Ridge	ASX: INR	5000 Bo*
Big Sandy	ASX: HWK	800

(*deposit includes Bo credits)

Metallurgy

Excellent results

Leach recycling tests show excellent recoveries

Lithium recoveries of >95% with short residence times, using either H₂SO₄ or HCl

Potential for beneficiation via attrition scrubbing resulting in 60% uplift of head grade

Potential to reduce acid consumption via removal of acid consuming minerals

Significant cost savings indicated from recent tests - positive for project economics

Testwork to identify further savings underway

Refer ASX release 22/02/2021, "More Positive Metallurgical Results from McDermitt"

Refer ASX release 17/08/2020, "More encouraging metallurgical results from McDermitt"

Refer ASX release 16/06/2020, "Encouraging metallurgical test results from McDermitt"

McDermitt 2021 Forward Planning

Additional metallurgical optimisation continues - further reducing costs

Produce Lithium Carbonate for testing by potential partners

Mining studies and possible scoping study: July

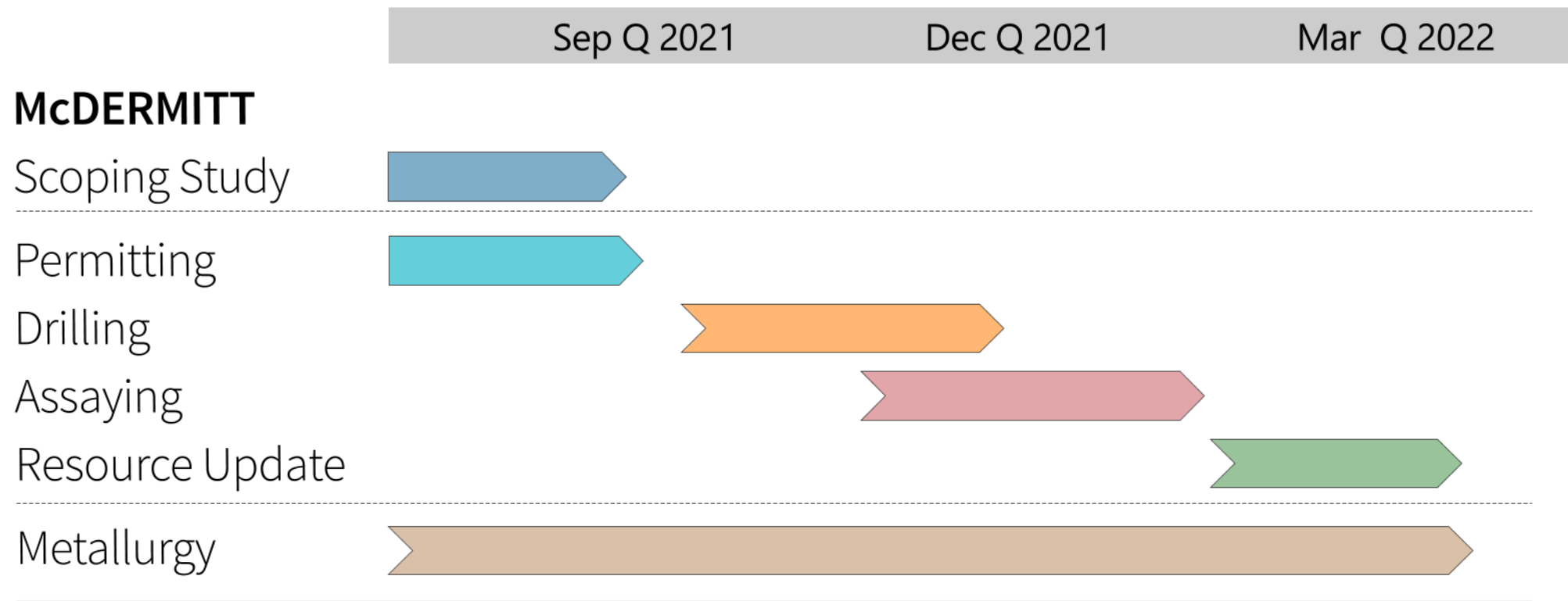
Submit 2021 drilling program for permitting: June

Accelerate environmental studies

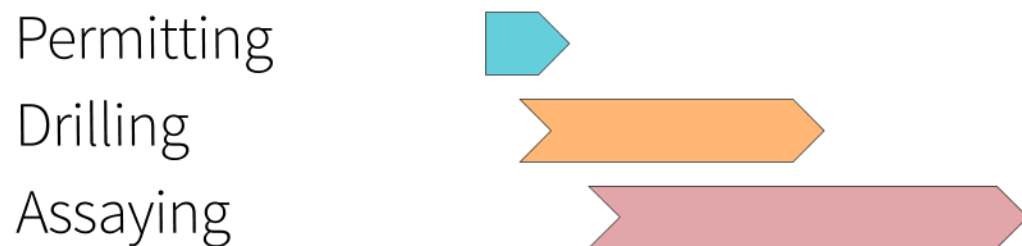
Engagement with US investors and potential partners ongoing



US Lithium Projects - Proposed Activities



CLAYTON NORTH



Widgiemooltha Project WA

1,000km² 100% Jindalee owned holding in highly fertile district

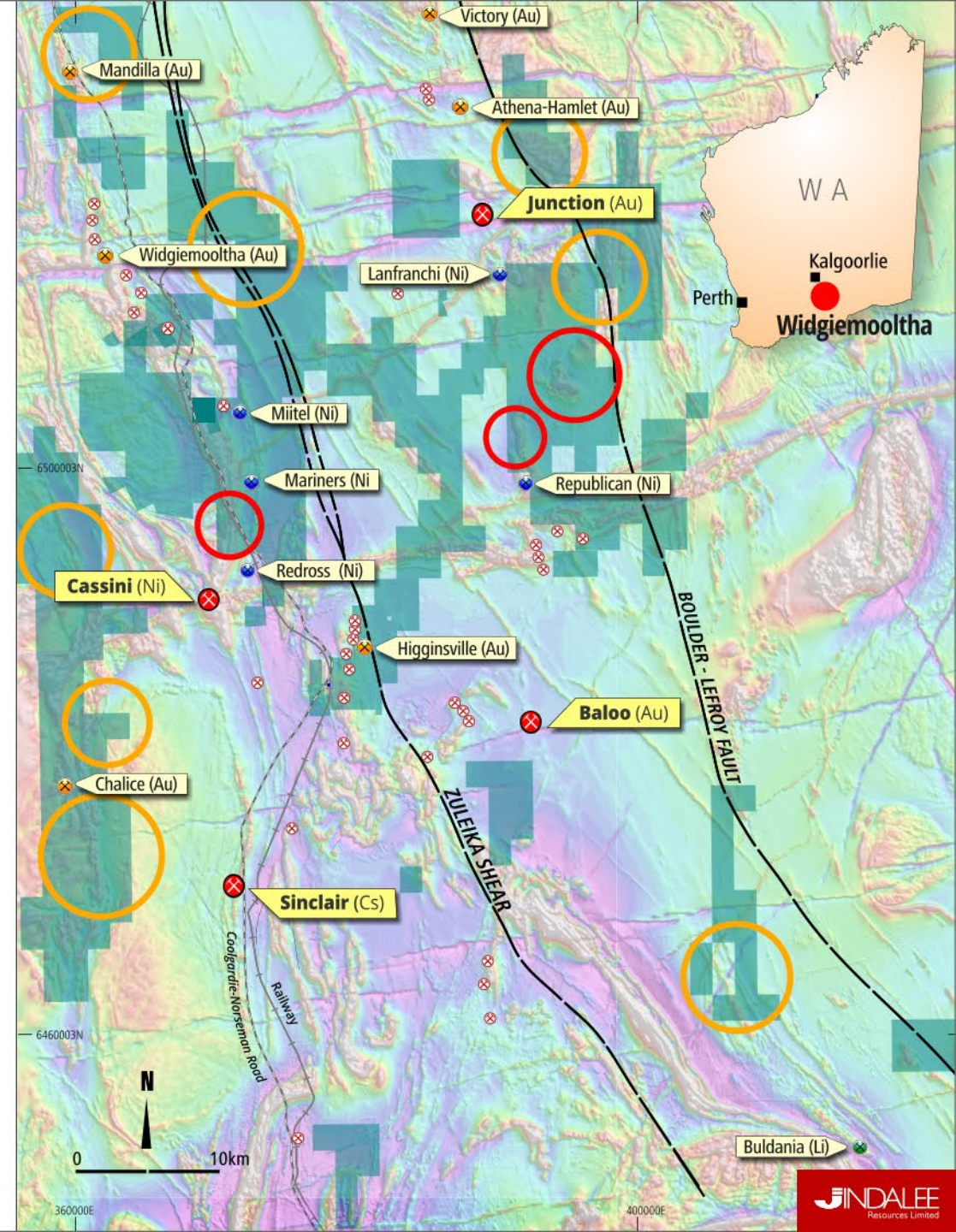
Excellent infrastructure supporting nearby Gold, Nickel, Lithium and Caesium mines

Recent discoveries confirm significant potential

Invincible (Au)	Gold Fields Limited
Baloo (Au)	Kakora Resources Ltd
Mandilla (Au)	Anglo Australian Resources
Cassini (Ni)	Mincor Resources NL
Sinclair Zone (Cs)	Essential Metals Ltd

Program of works for testing Gold targets approved

Program of works to test Nickel targets being prepared



*Note that some portions of Jindalee tenements are excised by pre-existing leases

Disclaimer

This presentation has been prepared by Jindalee Resources Limited (“Jindalee or JRL”) in good faith on the basis of information available as at the date of this presentation. Certain information in this presentation has been derived from third parties and though Jindalee has no reason to believe that it is not accurate, reliable or complete, it has not been independently audited or verified by Jindalee. Except to the extent required by law, Jindalee makes no representations or warranty as to the accuracy, reliability or completeness of information in this document and does not take responsibility for updating any information or correcting any errors or omissions which may become apparent after this presentation is released.

This presentation is for information purposes only. It is not a prospectus, product disclosure statement or other offer document under Australian law or any other law (and will not be lodged with the Australian Securities and Investments Commission or any foreign regulator) and is not, and does not constitute, an invitation or offer of securities for subscription, purchase or sale in any jurisdiction. In particular, this presentation does not constitute an invitation or offer of securities for subscription, purchase or sale in the United States or any other jurisdiction in which such an offer would be illegal. The securities referred to in this presentation have not been, and will not be, registered under the U.S. Securities Act of 1933 as amended or the securities laws of any state or other jurisdiction of the United States and may not be offered or sold, directly or indirectly in the United States.

Any forward looking statements included in this presentation involve subjective judgement and analysis and are subject to uncertainties, risks and contingencies, many of which are outside the control of, and may be unknown to Jindalee. In particular they speak only to the date of this presentation, they assume the success of Jindalee’s strategies, and they are subject to significant regulatory, business, competitive and economic uncertainties and risk. Actual future events may vary materially from the forward looking statements and the assumptions on which these are based. Recipients of this presentation are cautioned not to place undue reliance on such forward looking statements.

To the extent permitted by law, Jindalee and its officers, employees, related bodies corporate and agents disclaim all liability, direct, indirect or consequential (and whether or not arising out of the negligence, default, or lack of care of Jindalee and/or any of its agents) for any loss or damage suffered by a recipient or other persons out of, or in connection with, any use or reliance on this presentation or information. This presentation does not constitute investment advice and has been prepared without taking into account the recipient’s investment objectives, financial circumstances or particular needs and the opinions and recommendations in this presentation are not intended to represent recommendations of particular investments to particular persons. Recipients should seek professional advice when deciding if an investment is appropriate. All securities transactions involve risks, which include (among others) the risk of adverse or unanticipated market, financial or political developments.

All amounts are in A\$ unless stated otherwise.

For further information contact:

Lindsay Dudfield

Executive Director

Jindalee Resources Limited

E: enquiry@jindalee.net

T: +61 8 9321 7550

Karen Wellman

Chief Executive Officer

Jindalee Resources Limited

E: enquiry@jindalee.net

T: +61 8 9321 7550

Competent Persons Statement

The information in this presentation that relates to exploration results, exploration targets and mineral resources for the Company's projects was first released by the Company on the dates set out under the heading "Additional Information" on this page. The Company confirms that it is not aware of any new information or data that materially affects the information included in the relevant market announcements and, in the case of mineral resource estimates, that all material assumptions and technical parameters underpinning the estimates in the relevant market announcement continue to apply and have not materially changed

Additional Information

Additional details including JORC 2012 reporting tables, where applicable, can be found in the following Jindalee Resources' ASX announcements:

- 29/04/2021, "Quarterly Activities and Cashflow Report"
- 08/04/2021, "McDermitt Lithium Project confirmed as largest in USA"
- 31/03/2021, "Jindalee increases size of McDermitt Project by 67%"
- 15/03/2021, "\$9M raising to fund resource growth at McDermitt"
- 12/03/2021, "JRL continues to demonstrate strategic scale of McDermitt"
- 22/02/2021, "More Positive Metallurgical Results from McDermitt"
- 28/01/2021, "Quarterly Activities and Cashflow Report"
- 17/08/2020, "More encouraging metallurgical results from McDermitt"
- 16/06/2020, "Encouraging Metallurgical Results from McDermitt"
- 19/11/2019, "Maiden Lithium Resource at McDermitt"



Jindalee Resources Limited
Level 2, 9 Havelock Street
West Perth WA 6005
AUSTRALIA

Thank you

www.jindalee.net.au
enquiry@jindalee.net



ASX: JRL

