

## Share Café

June 2021 "Hidden Gems":  
medicinal cannabis/ hemp Webinar

*Michael Winlo*

ASX:EMD

myriad data.  
individual care.

# Disclaimer and notices

This presentation has been prepared by Emyria Limited ACN 625 085 734 (Company or Emyria). This presentation is not a financial product or investment advice or recommendation, offer or invitation by any person or to any person to sell or purchase securities in Emyria in any jurisdiction. This presentation contains general information only and does not consider the investment objectives, financial situation and needs of individual investors. Investors should make their own independent assessment of the information in this presentation and obtain their own independent advice from a qualified financial adviser having regard to their personal objectives, financial situation and needs before taking any action. No representation or warranty, express or implied, is made as to the accuracy, completeness, reliability or adequacy of any statements, estimates, opinions or other information, or the reasonableness of any assumption or other statement, contained in this presentation. Nor is any representation or warranty (express or implied) given as to the accuracy, completeness, likelihood of achievement or reasonableness of any forecasts, prospective statements or returns contained in this presentation. Such forecasts, prospective statements or returns are by their nature subject to significant uncertainties and contingencies, many of which are outside the control of Emyria. To the maximum extent permitted by law, Emyria and its related bodies corporate, directors, officers, employees, advisers and agents disclaim all liability and responsibility (including without limitation any liability arising from fault or negligence) for any direct or indirect loss or damage which may arise or be suffered through use or reliance on anything contained in, or omitted from, this presentation. An investment in Emyria securities should be considered speculative and is subject to investment and other known and unknown risks, some of which are beyond the control of Emyria. Emyria does not guarantee any rate of return or the absolute or relative investment performance of Emyria securities. The distribution of this presentation including in jurisdictions outside Australia, may be restricted by law. Any person who receives this presentation must seek advice on and observe any such restrictions.

This release may contain certain forward-looking statements with respect to matters including but not limited to the financial condition, results of operations and business of Emyria and certain of the plans and objectives of Emyria with respect to these items. These forward-looking statements are not historical facts but rather are based on Emyria's current expectations, estimates and projections about the industry in which Emyria operates, and its beliefs and assumptions. Words such as "anticipates," "expects," "intends," "plans," "believes," "seeks," "estimates", "guidance" and similar expressions are intended to identify forward looking statements and should be considered an at-risk statement. Such statements are subject to certain risks and uncertainties, particularly those risks or uncertainties inherent in the process of developing technology and in the endeavour of building a business around such products and services. These statements are not guarantees of future performance and are subject to known and unknown risks, uncertainties and other factors, some of which are beyond the control of Emyria, are difficult to predict and could cause actual results to differ materially from those expressed or forecasted in the forward looking statements. Emyria cautions shareholders and prospective shareholders not to place undue reliance on these forward-looking statements, which reflect the view of Emyria only as of the date of this release. The forward-looking statements made in this announcement relate only to events as of the date on which the statements are made. Emyria will not undertake any obligation to release publicly any revisions or updates to these forward-looking statements to reflect events, circumstances or unanticipated events occurring after the date of this announcement except as required by law or by any appropriate regulatory authority.



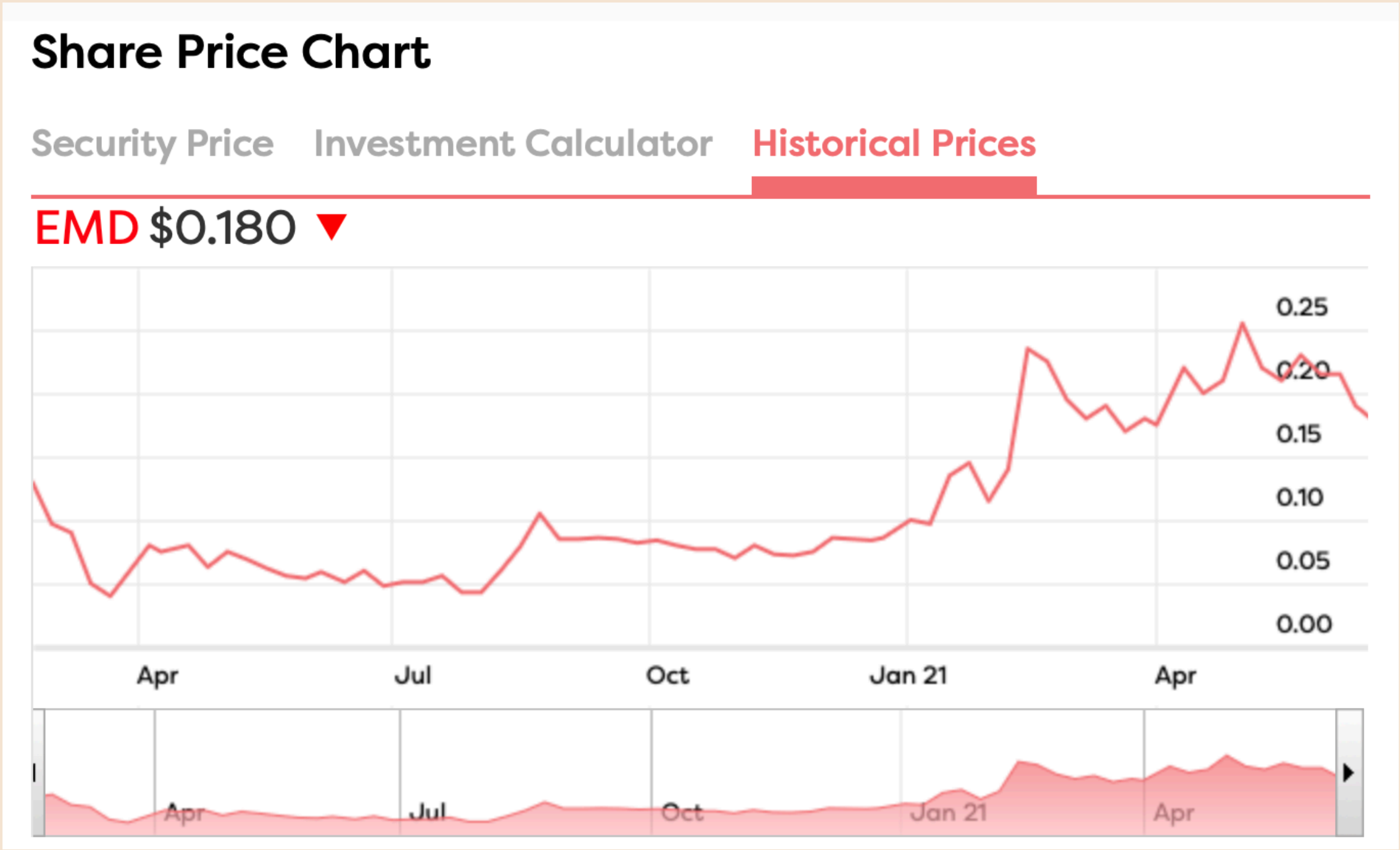
# Emyria develops registered treatments for large, under-served populations powered by proprietary clinical evidence



## Capital Structure

Key Metrics	Value
Ordinary shares	225.5
Last close (04 March 2021)	A\$0.18
Market Capitalisation (Date)	A\$45.7m
Cash (31 March 2021)	A\$8.5m
Debt (31 March 2021)	-
Enterprise value	A\$37.2m
Options (ex. price \$0.45, exp. 2023 )	18.35m
Options (ex. price \$0.114, exp. 2023 )	12m
Options (ex. price \$0.20, exp. 2022 )	10.7m

## 12month price chart





# Emyria provides care + data to support drug registration

Emyria Care



Emyria Data



- **7 sites** around Australia
- **4,000 patients** and growing
- Patients aged **2 - 96 years**
- Over **40 clinical indications**
- **Global clinical advisors**



- **Millions** of data points
- **Validated** assessments
- Source of **unique patents**
- Unique **dose response** insights
- **TGA Class IIa** data platform  
(Openly)

***“Successful registration requires known what works, and for whom.”***

Emyria's current drug registration programs



EMD-003

CBD medicine targeting **mental health**



EMD-004

CBD +/- THC for **irritable bowel syndrome**



EMDMA-001

MDMA for **post-traumatic stress syndrome**

# Emyria data is the brain of our company

Emyria

Data

Millions  
of unique  
data  
points

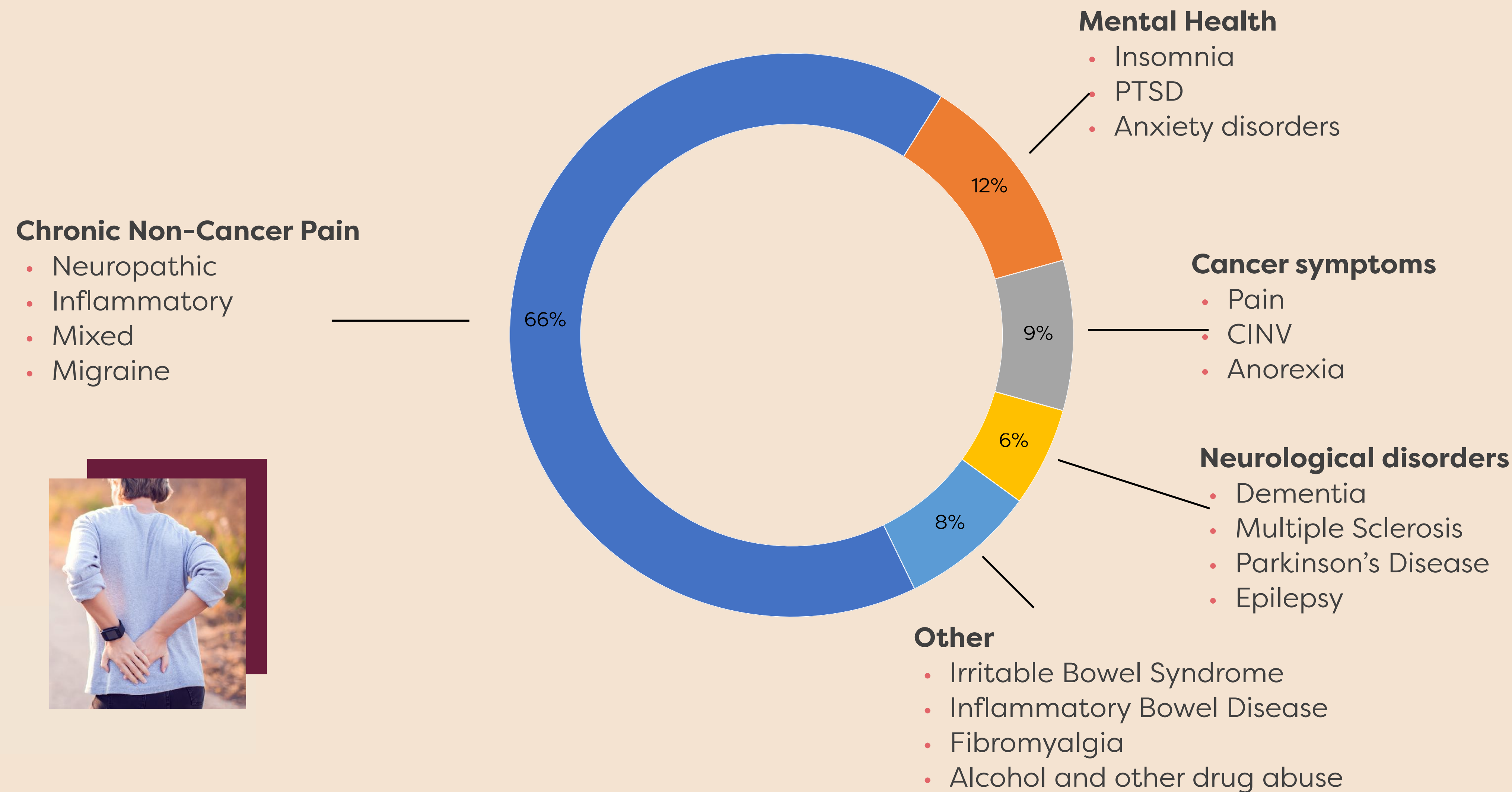
An intelligent  
model for care  
& drug design

2-96 years age range of patients	56% female patients	44 unique primary indications
54% patients presenting with symptoms of moderate to severe anxiety	53% patients presenting with symptoms of moderate to severe depression	7.12 average concomitant medications per patient at initial visit
0-600mg range of CBD prescribed doses are carefully titrated for each patient which gives Emyria unique dose response insights	0-197mg range of THC prescribed doses are carefully titrated for each patient which gives Emyria unique dose response insights	35% patients experiencing an adverse event

Data summary as of 01 DEC 2020



# Emyria provides care for more than 40 unmet needs...

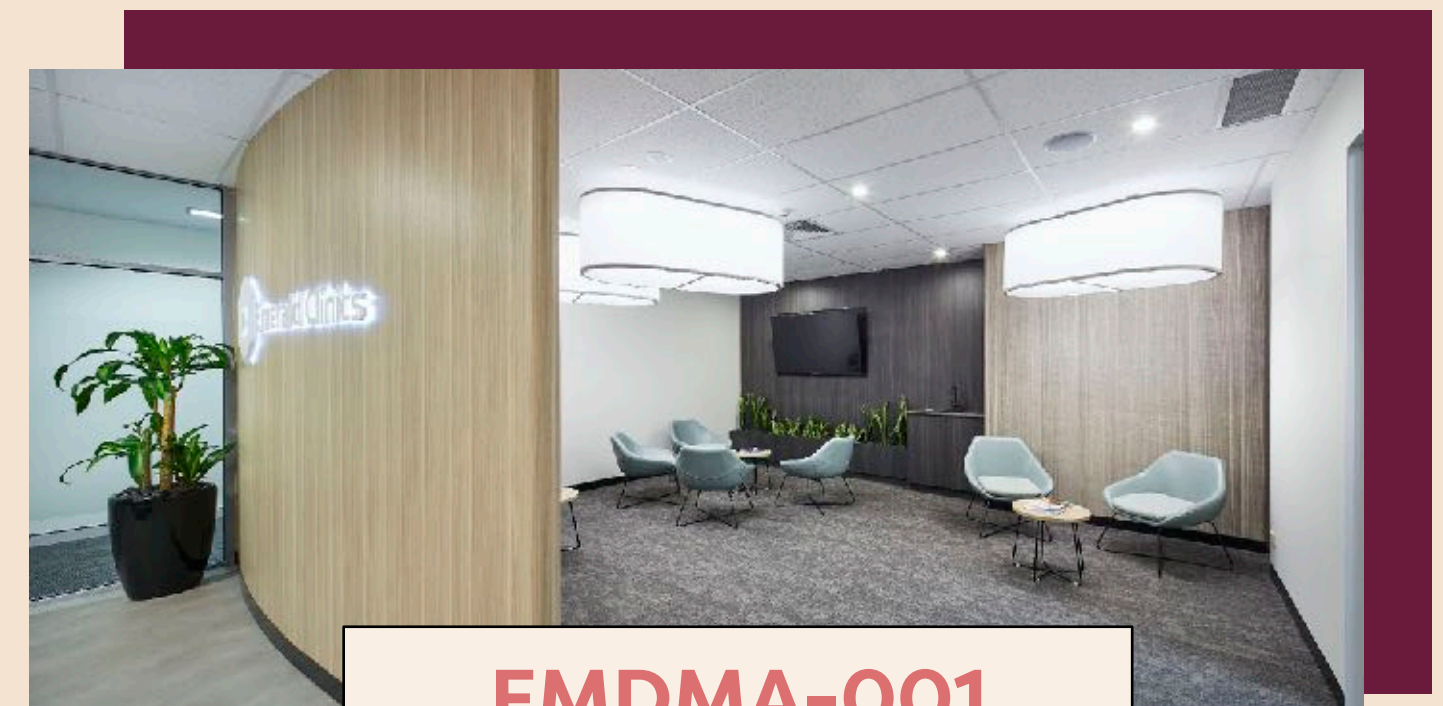


...each unmet need is an opportunity



EMD-003

**Cannabinoid medicine** (over-the-counter) for psychological distress

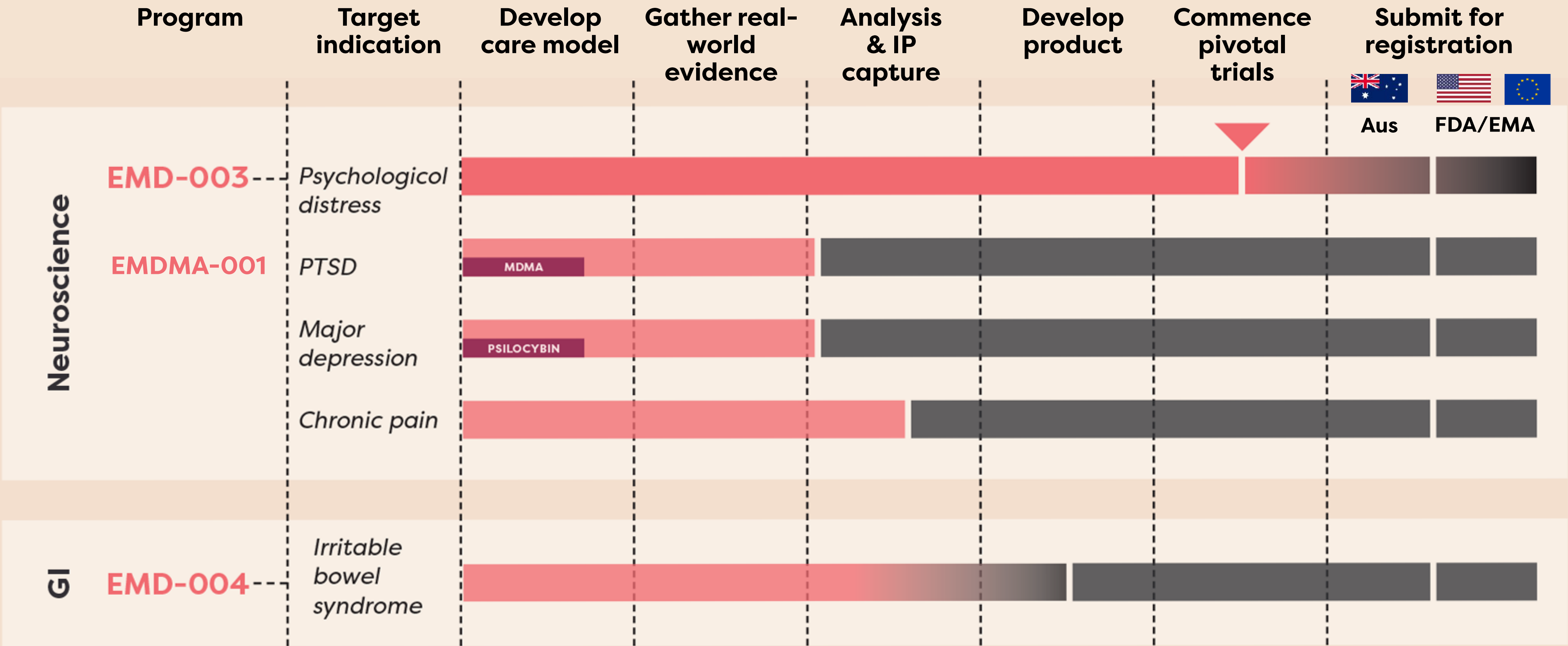


EMDMA-001

**Psychedelic-assisted therapy** for PTSD



# Emyria pipeline + global registration plans



+40 other indications

Cannabinoid Psychedelic therapy In planning Where we are now

\* Under Australia's Therapeutic Goods Administration (TGA), psychedelic medications such as psilocybin and MDMA are currently Schedule 9 of the Uniform Scheduling of Medicines and Poisons (which deals with Prohibited Substances). They are only available via approved research trials that include oversight by an institutional research ethics committee and careful monitoring and reporting of efficacy and safety outcomes. This work is with partner Mind Medicine Australia.



**Registering treatments creates value**



# Medicinal cannabis in Australia

**150+ medicinal cannabis products available in Australia**

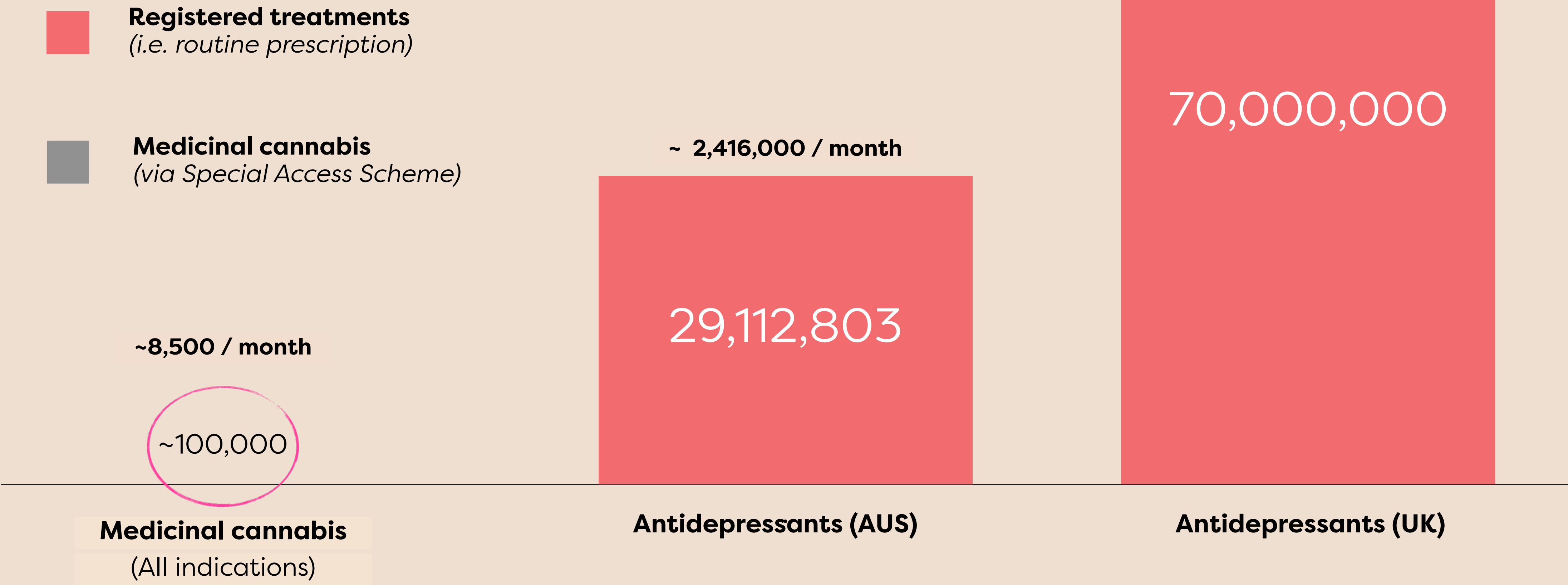
**Medicinal cannabis** products are “unregistered” meaning, they are only available to patients via Special Access Schemes, Authorised Prescriber programs or clinical trials\*

\*  **only 1 product is registered & available via routine prescription** (Epidyolex - GW Pharma) and only for **rare forms of epilepsy** with an estimated prevalence of 1 in 20k-40k



# Medicinal cannabis vs registered prescriptions

(via select drug groupings in Australia + UK over 12 months)



Sources: <https://www.pbs.gov.au/info/browse/statistics> (data from 01 Jul 2018 to 30 Jun 2019)  
<https://www.tga.gov.au/medicinal-cannabis-role-tga> (data from 01 Nov 2019 to 31 Oct 2020) + Freshleaf Analytics, H1, 2021

# Recent deals | Jazz acquires GW Pharma (\$7.2B USD)



## **Jazz Pharmaceuticals to Acquire GW Pharmaceuticals plc, Creating an Innovative, High-Growth, Global Biopharma Leader**

February 3, 2021

**Adds high-growth commercial franchise to Neuroscience portfolio with Epidiolex®, the first and only FDA-approved prescription cannabidiol medicine and a potential near-term blockbuster**

**Enhanced product diversification of combined company expected to provide accelerated double-digit revenue growth**

**Anticipated to be accretive in first full year of combined operations and substantially accretive thereafter**

**Conference call today at 8:30 AM ET**

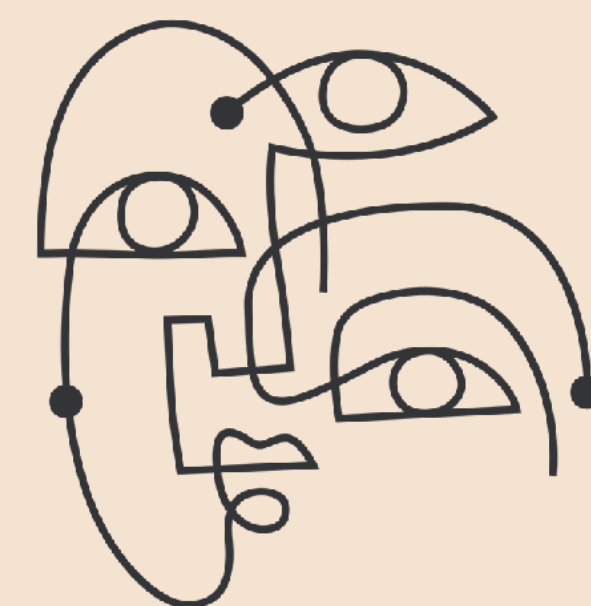
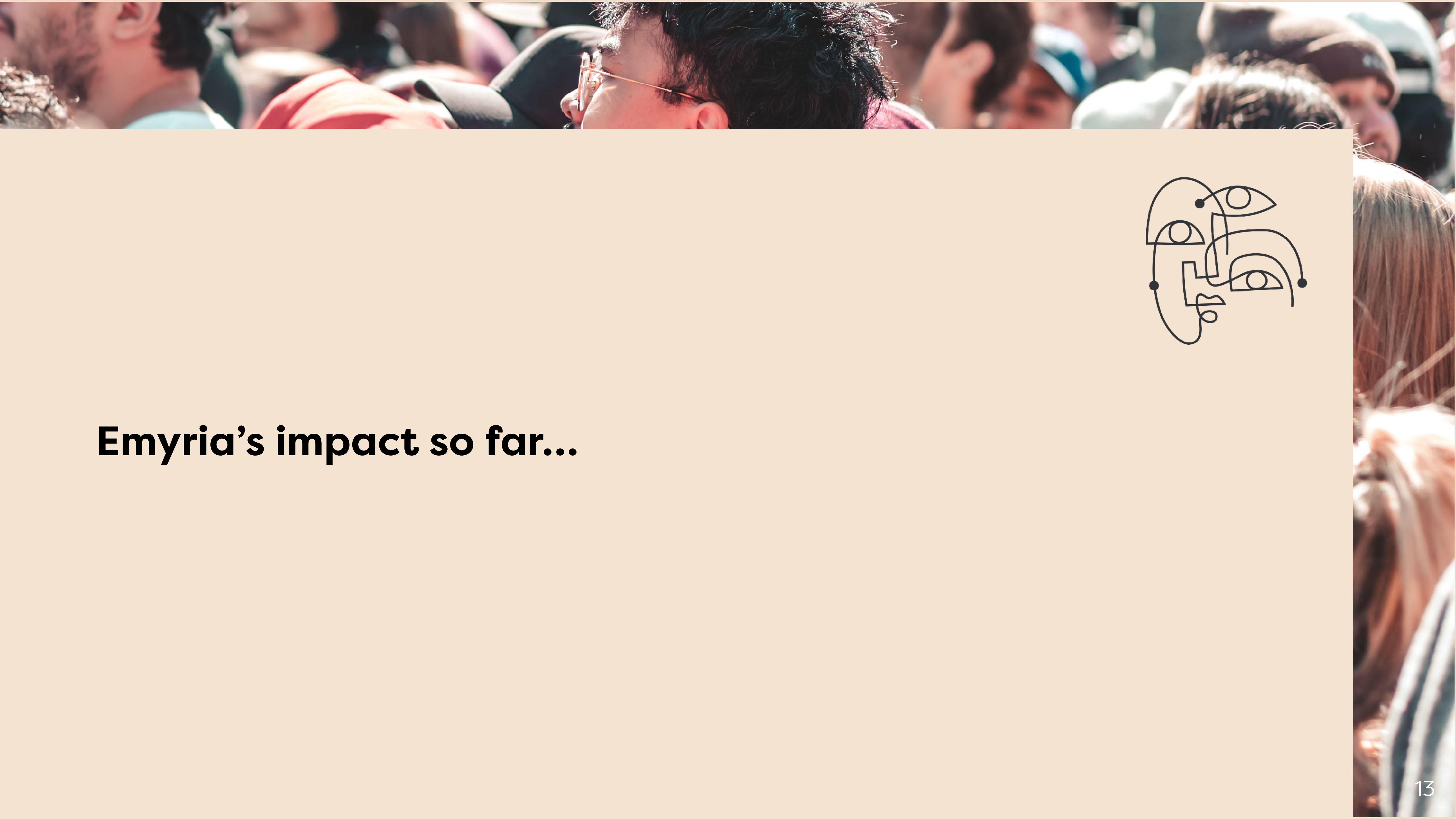
DUBLIN and LONDON, Feb. 3, 2021 /PRNewswire/ -- Jazz Pharmaceuticals plc (Nasdaq: JAZZ) and GW Pharmaceuticals plc (Nasdaq: GWPH) today announced the companies have entered into a definitive agreement for Jazz to acquire GW for \$220.00 per American Depositary Share (ADS), in the form of \$200.00 in cash and \$20.00 in Jazz ordinary shares, for a total consideration of \$7.2 billion, or \$6.7 billion net of GW cash. The transaction, which has been unanimously approved by the Boards of Directors of both companies, is expected to close in the second quarter of 2021.

Upon close of the transaction, the combined company will be a leader in neuroscience with a global commercial and operational footprint well positioned to maximize the value of its diversified portfolio.

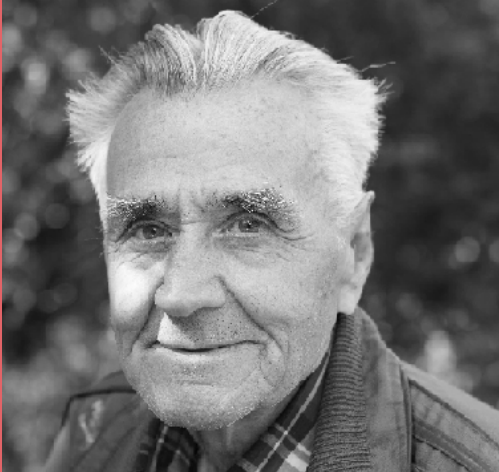


*Emyria recently appointed Dr Karen Smith, Ex-Chief Medical Officer and Global Head of Research & Development at Jazz Pharmaceuticals to Chair Emyria's Strategic Advisory (See ASX Announcement 22 February 2021)*





**Emyria's impact so far...**



# Case Study – Bob



- Vietnam Veteran | injured by fall in 1969 | multiple fractures
- Chronic back pain | peripheral neuropathy from Agent Orange | PTSD
- **At initial visit:** oxycontin | buprenorphine | pregabalin | gabapentin | PEA duloxetine – with little relief and side effects.
- **Now:** Stable at 15mg 1:1 THC/CBD | **ceased all opiates**, pregabalin and PEA



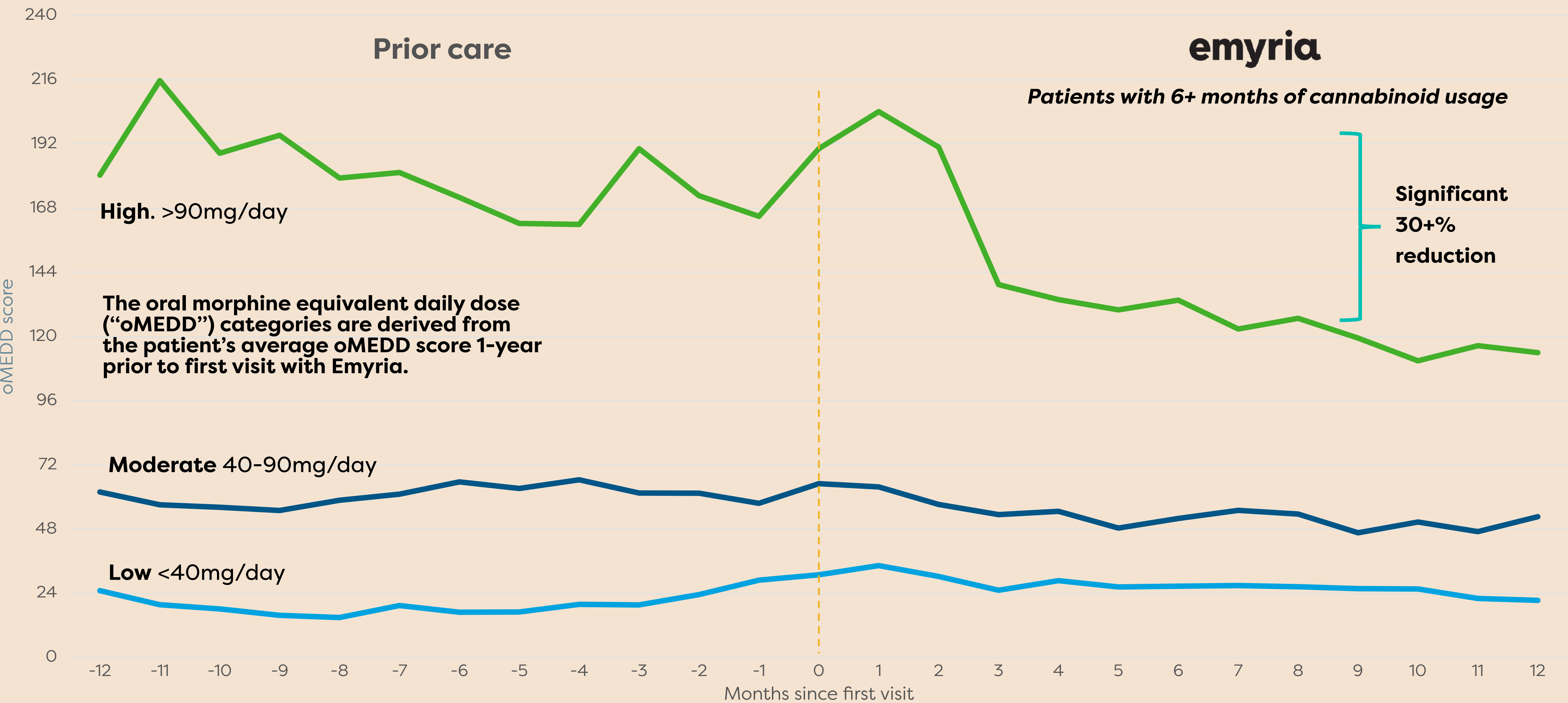
Scores	Initial assessment	Visit 5
BPI Pain severity score	5.0	1.75
BPI Pain interference score	5.29	0.86
Visual analogue scale	5.0	1.0
Insomnia severity score	12.0	1.0
DASS 42 Depression	14	4
DASS 42 Anxiety	16	2
DASS 42 Stress	16	12

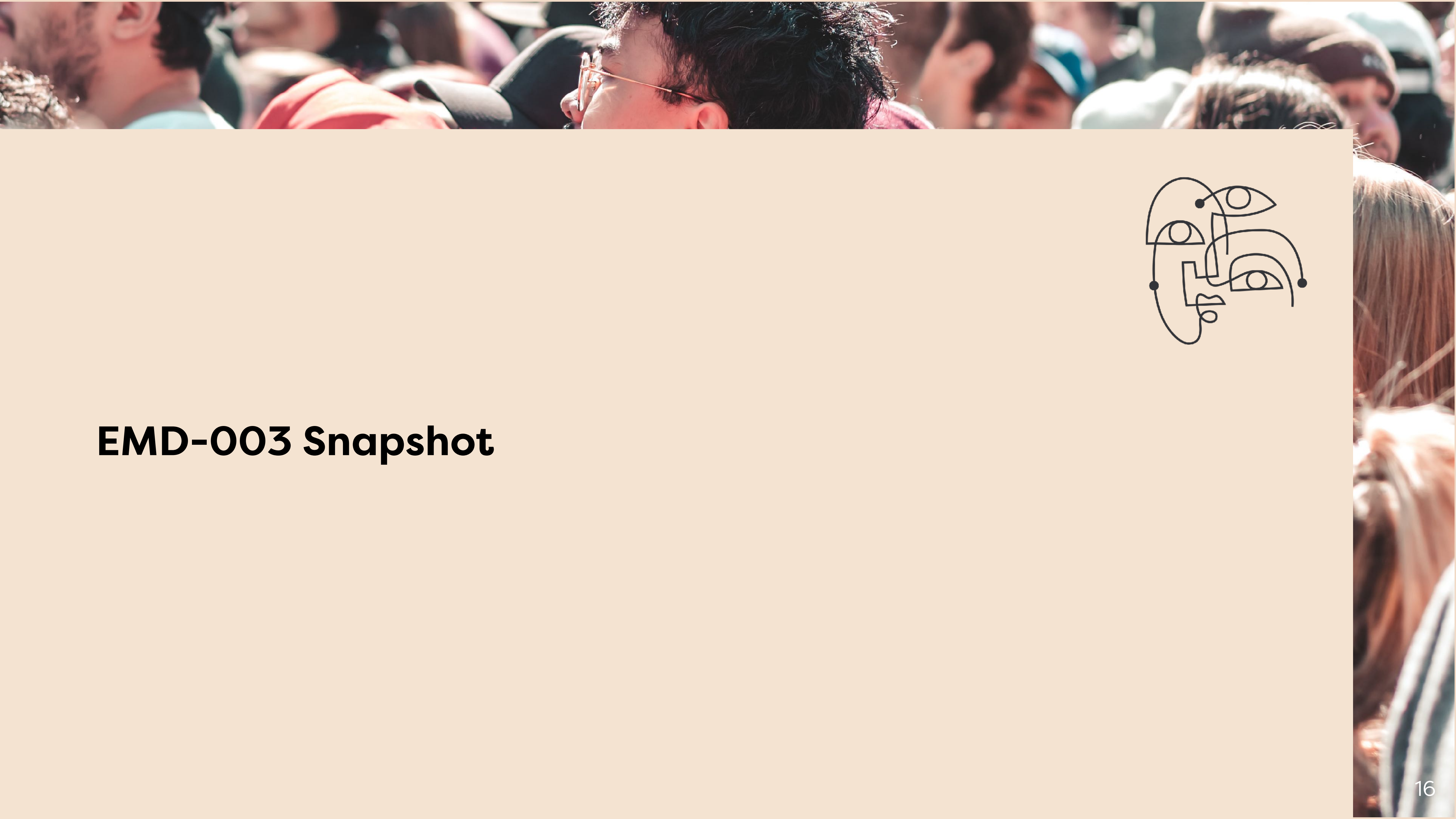


# Emyria's care model works... + our data is validated



Average opioid scores by oMEDD category (Pre vs Post Emyria)





**EMD-003 Snapshot**



# EMD-003: Unique success factors in place

*Strategic partnership accelerates path to S3 registration*

**emyria**

✓  
**Real-world data on safety & efficacy at target dose**

- Longitudinal clinical data on over 3,500 patients and growing
- Over 400 prescriptions already written for target dose form

✓  
**IP on “method of use”**

- Unique insights support growing patent portfolio
- Emyria patents cover indication and dose range

✓  
**Streamlined access to patients + clinical trial infrastructure**

- 7 locations in Australia
- All GPs, GCP-trained
- Already running a clinical-trial-grade data capture platform

✓  
**Protocols developed**

- Clinical outcomes trials developed using Emyria Data insights and expertise of team

✓  
**Regulatory strategy**

- Engaged experienced regulatory consultant with prior S3 successes

✓  
**Experienced drug development team**

- Emyria team has overseen over 100 clinical trials and 25 drug approvals

**Cann Group**

✓  
**Phase 1 & Stability data**

- Phase 1 complete for target dose
- > 30+ months stability data

✓  
**Unique, dose form protected by IP**

- Covers use of novel delivery technology (Gelpell)

✓  
**Large scale, GMP manufacturing**

- Factory in Europe, transferring technology to Australia

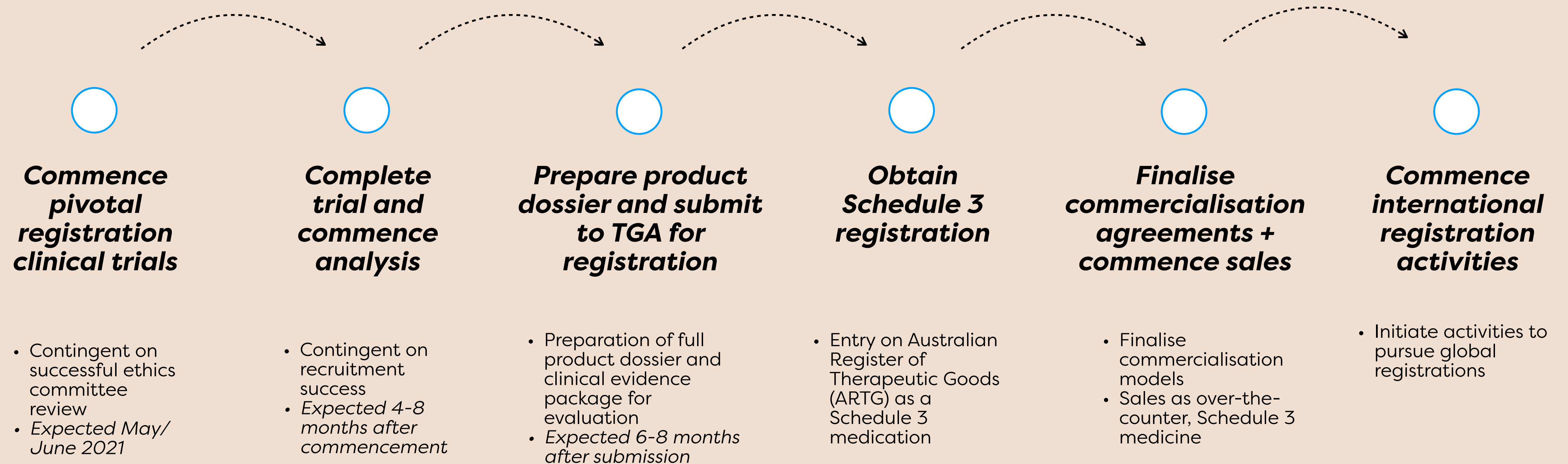
*This partnership greatly accelerates Emyria’s EMD-003 drug development program by combining Emyria’s unique clinical data and drug development expertise with Cann Group’s best-in-class CBD delivery technology.*

*Cann Group’s CBD has already completed robust stability testing as well as Phase 1 clinical trials as required by the TGA. This allows us to move straight to pivotal clinical outcomes trials saving significant time and money.*

**Dr Michael Winlo, MD and CEO**

# EMD-003: Milestones in year ahead

## Value drivers next 12 months



***In parallel***

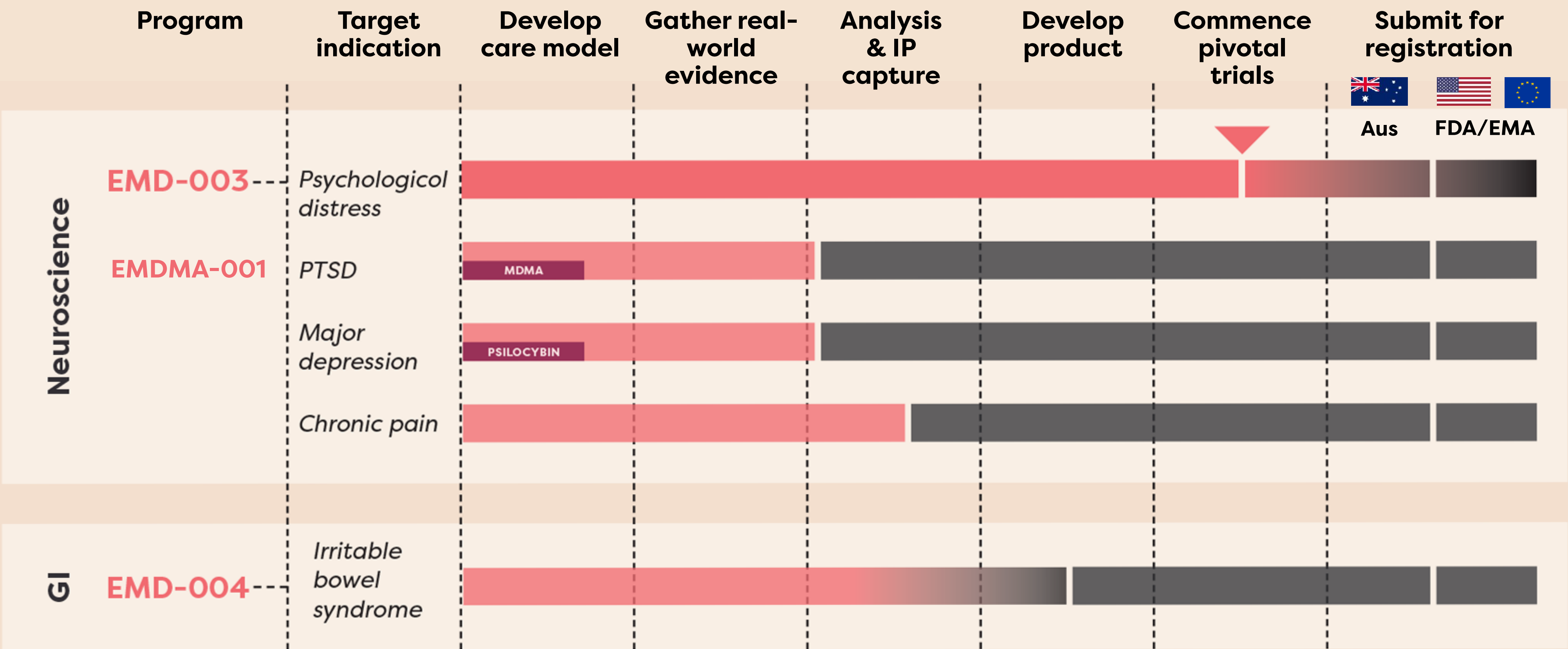
***Commence psychedelic-assisted therapy trials >> gold-standard service for Australia***

***Registration trials for EMD-004 >> second, unique drug treatment***

***Launch registration programs for US, FDA >> reach global market with unique dose products***



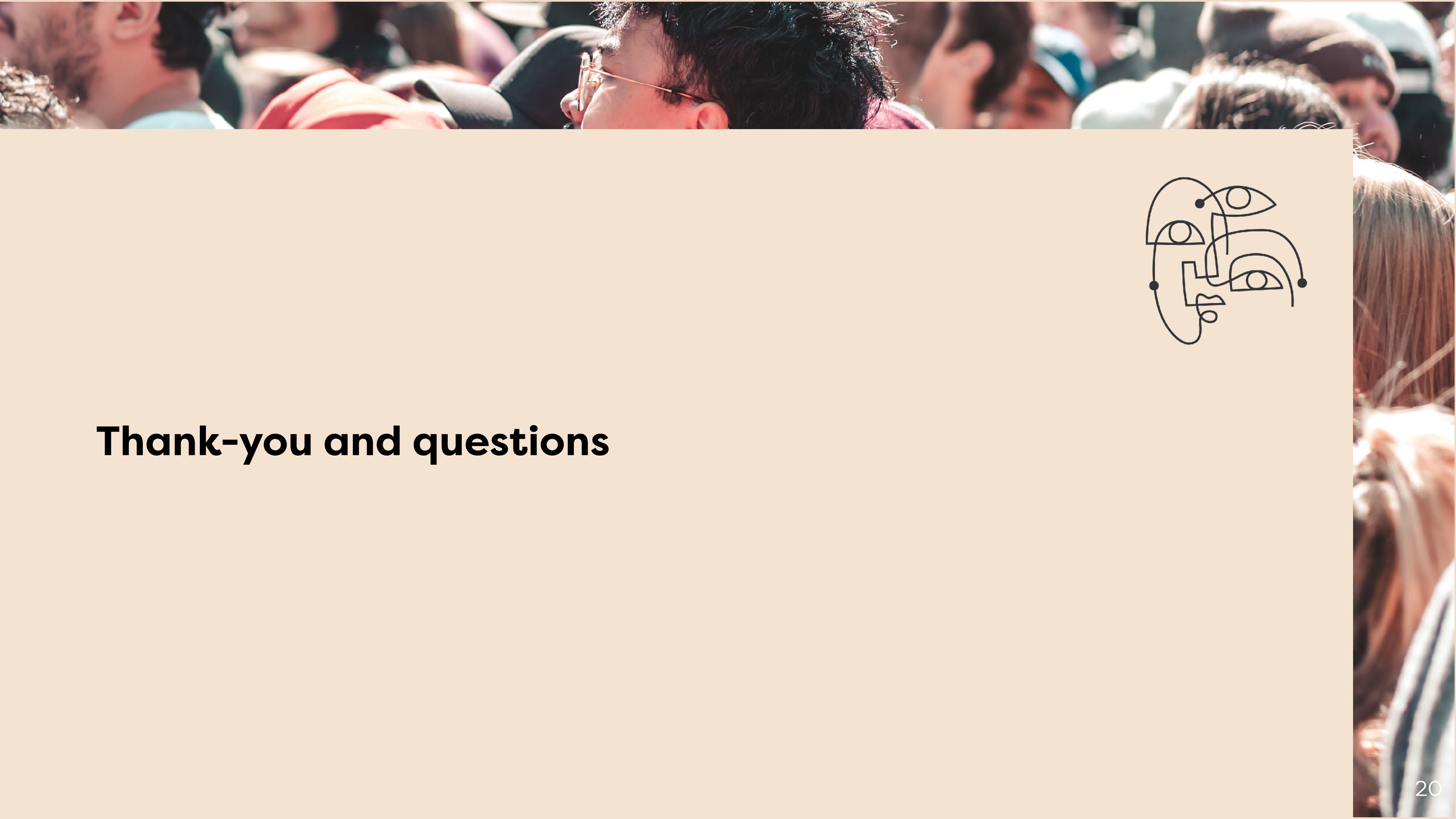
# Emyria pipeline + global registration plans



+40 other indications

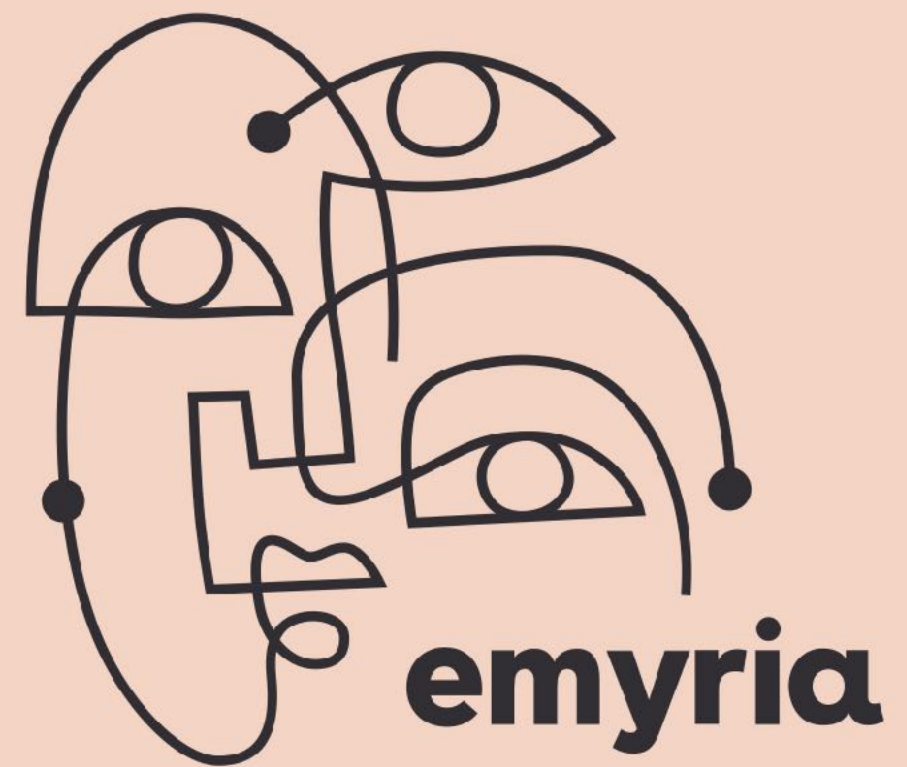
Cannabinoid Psychedelic therapy In planning Where we are now

\* Under Australia's Therapeutic Goods Administration (TGA), psychedelic medications such as psilocybin and MDMA are currently Schedule 9 of the Uniform Scheduling of Medicines and Poisons (which deals with Prohibited Substances). They are only available via approved research trials that include oversight by an institutional research ethics committee and careful monitoring and reporting of efficacy and safety outcomes. This work is with partner Mind Medicine Australia.



**Thank-you and questions**





myriad data.  
individual care.

## Contact Information

Michael Winlo: [mwinlo@emyria.com](mailto:mwinlo@emyria.com)

Investors: [investors@emyria.com](mailto:investors@emyria.com)

Media: [media@emyria.com](mailto:media@emyria.com)

General: [info@emyria.com](mailto:info@emyria.com)

ASX:EMD




# Appendix



# Board with deep clinical and commercial expertise

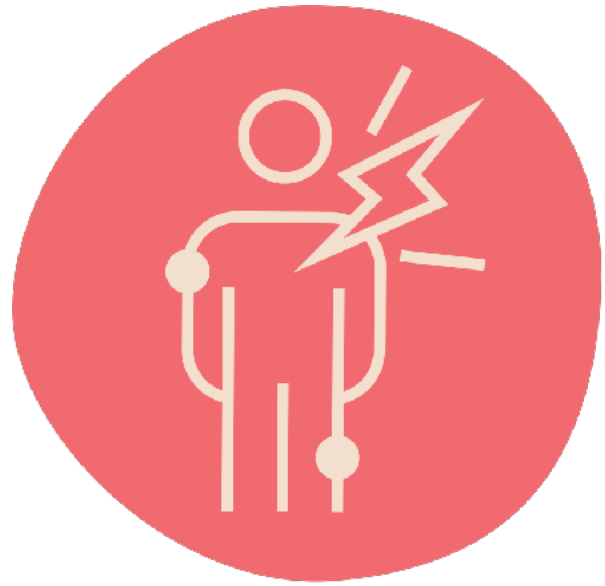
Key Person	Role	
	<b>Dr Stewart Washer</b> <b>Chairman &amp; Founder</b>	<b>Cynata</b> (ASX:CYP) – stem cells <b>Orthocell</b> (ASX:OCC) – regenerative medicine <b>Botanix</b> (ASX:BOT) – CBD (synthetic) <div>    </div>
	<b>Dr Michael Winlo</b> <b>Managing Director</b>	<b>Medical doctor</b> Director at <b>Linear Clinical</b> Health Lead at <b>Palantir</b> MBA from <b>Stanford University</b> <div>    </div>
	<b>Dr Alistair Vickery</b> <b>Medical Director</b>	Specialist <b>general practitioner</b> Chair of <b>Black Swan Health</b> , - mental health Associate <b>Professor of Primary Health Care</b> <div>   </div>
	<b>Matt Callahan</b> <b>NED &amp; Founder</b>	Founder <b>Botanix</b> (ASX:BOT), Founder <b>Orthocell</b> (ASX:OCC) 4 products through <b>FDA approval</b> . More than 20 years' <b>legal and IP experience</b> <div>    </div>
	<b>Professor Sir John Tooke</b> <b>Independent NED</b>	<b>Knighted</b> in the UK for Services to Medicine Senior Independent Director, <b>BUPA Chile</b> Head of Medical Sciences at <b>UCL</b> Review board of <b>Google DeepMind</b> Immediate past <b>President Academy of Medical Sciences</b> <div>     </div>

# Recently appointed Key Advisors

Key Person	Role	
	<b>Dr Karen Smith</b> M.D., Ph.D., M.B.A., L.L.M. <b>Chair of Strategic Advisory</b>	<ul style="list-style-type: none"><li>• Experienced <b>pharmaceutical expert</b></li><li>• <b>Multiple Directorships</b> with innovative pharmaceutical companies</li><li>• Ex-<b>Chief Medical Officer and Global Head of R&amp;D at Jazz Pharmaceuticals</b></li><li>• Overseen more than <b>100 clinical trials and 20 regulatory approvals</b></li><li>• Appointment boosts Emyria's global clinical trial and regulatory approval expertise to accelerate drug registration</li><li>• Appointment to support innovation across Emyria's drug development programs, clinical studies and evidence-generating care model</li></ul> 
	<b>Dr Richard Magtengaard</b> <b>Consultant Psychiatrist</b>	<ul style="list-style-type: none"><li>• <b>Consultant Psychiatrist</b> and retired <b>Naval Officer</b></li><li>• Current <b>Director of Military Trauma Recovery</b> Programme for sustained physical and psychological traumas</li><li>• active member of the <b>Australasian Military Medical Association</b> (AMMA) and has developed lasting affiliations with <b>ADF Joint Health Command</b> (JHC), <b>Returned Services League</b> WA (RSLWA), St John Ambulance (SJA), West Australian Police (WAPOL), Department of Fire and Emergency Services (DFES), Australian Federal Police (AFP) and numerous other Ex-Service Organisations (ESOs)</li><li>• Appointment boosts Emyria's clinical expertise in mental health care</li></ul> 



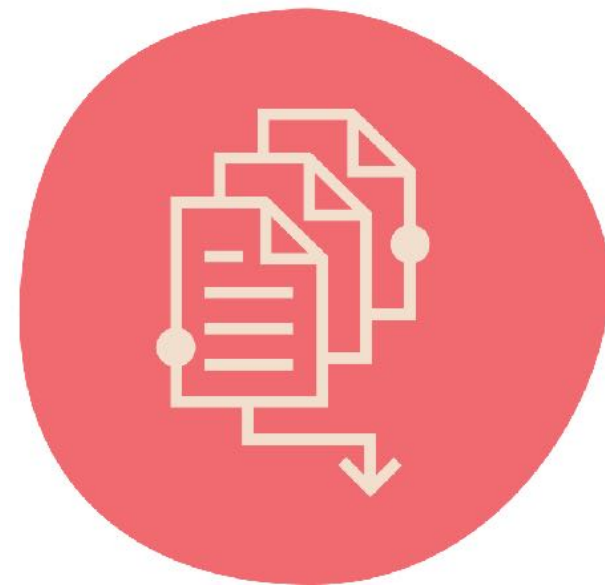
# Since listing, we have...



- Over **4,000 patients** with unmet needs
- **7 clinic locations** Emerald Clinics
- **Specialist advisors & GCP-trained GPs**
- **Over 500 referring clinicians**



- Launched **3 drug registration programs**:
- **EMD-003** (schedule 3 medicine for psychological distress)
- **EMD-004** (cannabinoid for IBS)
- **EMDMA-001** (MDMA for PTSD)



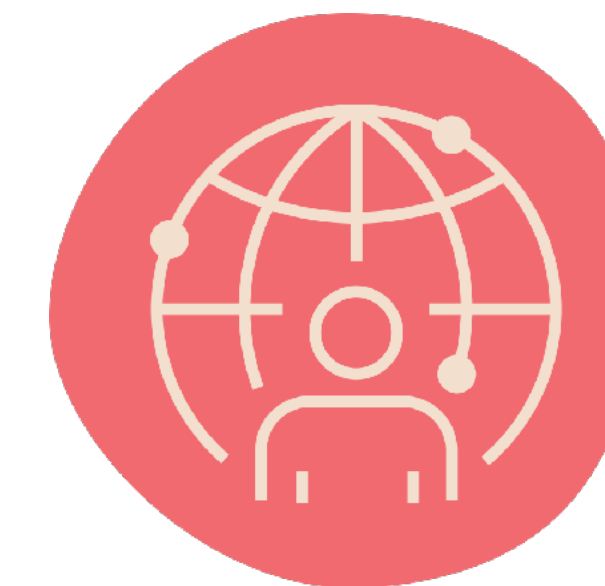
- Over **millions of validated data points**
- \$1M+ of data deals inc. with **Canopy Growth Corp**



- Multiple **PhD-trained data analysts**
- Informing **strategic trial design**
- **Patents** already filed



- **TGA Class IIa** remote monitoring systems
- **Major WA Health grant award** (\$880k) for remote monitoring of vital signs and mental health



- **UK** clinical partner - Sapphire Medical (London)
- **USA** strategic partner - Mt Sinai (New York)
- Partnership with Mind Medicine **Australia** to develop psychedelic-assisted therapy model