

ASX RELEASE: 15 July 2021

## Champion Delivers Consistent Grades at Significant Widths

- Final assays from recent drilling at the Champion Prospect at the Kookynie Gold Project<sup>1</sup> have been returned delivering consistent grades over good widths close to surface.
- Intercepts include:
  - CPRC0023 - 12 metres @ 2.04 g/t Au from 95 metres incl:
    - 5 metres @ 1.5 g/t from 95 metres and;
    - 4 metres @ 3.9 g/t from 104 metres incl:
  - CPRC0035 - 5 metres @ 2.1 g/t from 117 metres incl:
    - 1 metre @ 6.3 g/t from 120 metres.
  - CPRC0034 - 10 metres @ 1.6 g/t Au from 179 metres.
    - 4 metres @ 2.8 g/t from 185 metres
  - CPRC0037 - 3 metres @ 2.4 g/t from 45 metres
  - CPRC0039 – 3 Metres @ 2.5 g/t from 141 Metres
- Sixteen of the 24 drill holes returned a significant intercept.
- These results bode very well for the pending Mineral Resource Estimate for the Champion Prospect, which is being calculated along with the Leipold and McTavish Prospects, all situated on mining leases.
- A further 12 holes remain outstanding from Cosmopolitan.
- The Company is finalising plans for its next program with a focus on McTavish and the 2km of untested strike between McTavish and Leipold, where recent results included:
  - McTRC0049 - 5 metres @ 25.9 g/t from 28 metres
  - McTRC0064 - 6 metres @ 20.6 g/t from 19 metres
  - McTRC0044 - 3 metres @ 19.1 g/t from 88 metres

Metalicity Limited (ASX: MCT) (“MCT” or “Company”) is pleased to announce the gold results from the Champion Prospect at the Kookynie Gold Project<sup>1</sup> in the Eastern Goldfields, Western Australia, approximately 60 kilometres south southwest of Leonora.

<sup>1</sup>Please refer to ASX Announcement “Metalicity Achieves Earn-In On The Kookynie & Yundamindra Gold Projects” dated 20<sup>th</sup> May 2021 with Nex Metals Explorations Ltd, ASX:NME. As reported on 20 May, Metalicity now has a 51% and controlling interest in both the Kookynie & Yundamindra Gold projects and is continuing to earn further equity in these projects.

### Commenting on the drilling results, Metalicity CEO, Justin Barton said:

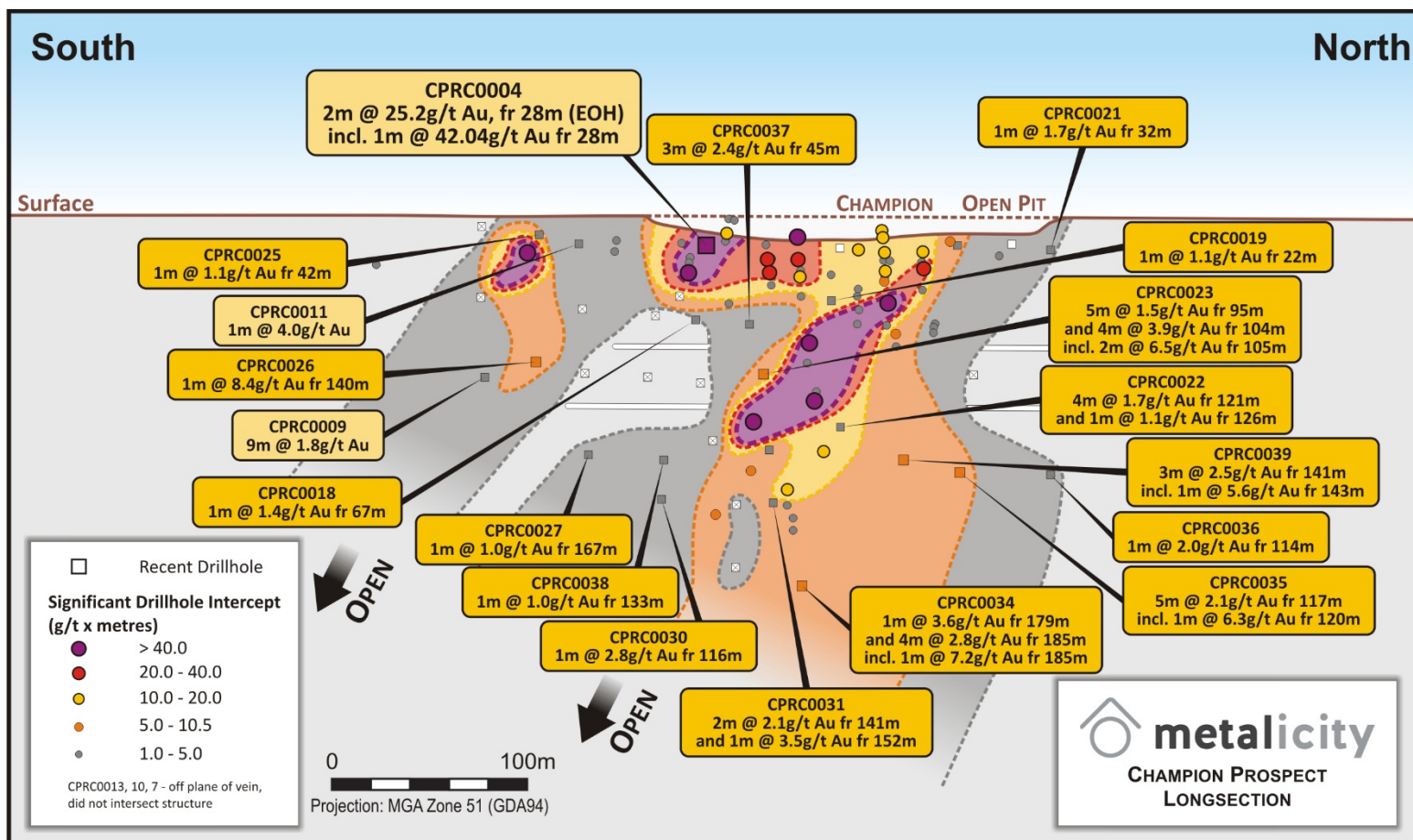
*“The number of significant widths and consistent grades returned at Champion add to the spectacular results recently returned at McTavish and Leipold, enhancing the exciting potential of these projects. All of these prospects reside on mining licences and remain open in one or more directions.”*

*“These results at Champion continue to define and expand the mineralisation and further validate the significant mineralisation already observed at all three prospects. All of this is very encouraging for the impending initial Resource Estimate; and is just the beginning for Leipold, McTavish and Champion with clear areas and targets defined for the next drilling program.”*

## Champion Assay Results

The results illustrated below continue to define and expand the mineralisation observed at Champion, which given the nature of the mineralisation and the drilling angle, are very close to true widths for the mineralisation observed. These very encouraging results at Champion, follow up from our preliminary Resource Estimate work in January and show similar structures observed by the Company at McTavish and Leipold. Furthermore, the Champion prospect results to date are all near surface and remain open at depth, highlighting the increased potential of this prospect.

Figure Two details a plane of vein long section for the Champion drilling to date and intercepts reported in Table 1.



**Figure 1 – Champion Prospect Plane of Vein Section with recent drilling\*.**

For Figure Two Drilling Results; \*Please refer to ASX Announcements: Metalicity Continues to Deliver Impressive Drill Hole Results for the Kookynie Gold Project, dated 22nd December 2020, Metalicity Continues to Deliver Fantastic Drill Hole Results for the Kookynie Gold Project dated 1st October 2020, Metalicity Reports Drill Hole Intercepts Up to 100 g/t Au for the Kookynie Gold Project dated 15th September 2020, Metalicity Continues to Deliver Spectacular Drill Hole Results for the Kookynie Gold Project dated 25th August 2020, Metalicity Delivers More Outstanding Drill Hole Results for the Kookynie Gold Project. Phase Two Drilling to Commence Imminently dated 10th July 2020, Metalicity Continues to Deliver Excellent Drill Hole Results for the Kookynie Gold Project dated 2nd July 2020, Metalicity Continues to Deliver Spectacular Drill Hole Results for the Kookynie Gold Project dated 25th June 2020 & Metalicity Reports Drill Hole Intercepts Up To 80 g/t Au & Additional Tenement Acquisition for Kookynie dated 21st January 2020.

## MGA 94\_Zone 51 South

Hole ID	Tenement	Hole Type	Easting	Northing	RL	EOH	Dip	Azi	From (m)	To (m)	Down Hole Width (m)	Grade (Au g/t)	Comments
CPRC0016	M40/27	RC	352,213	6,757,476	413.6	114	-60	270	No significant intersection				
CPRC0017	M40/27	RC	352,185	6,757,509	413.1	90	-60	270	No significant intersection				
CPRC0018	M40/27	RC	352,188	6,757,534	413.7	72	-60	272	67	68	1	1.4	1 metre @ 1.4 g/t from 67 metres
CPRC0019	M40/27	RC	352,181	6,757,605	413.2	48	-60	270	22	23	1	1.1	1 metre @ 1.1 g/t from 22 metres
CPRC0020	M40/27	RC	352,222	6,757,641	413.8	84	-60	280	No significant intersection				
CPRC0021	M40/27	RC	352,180	6,757,677	414.0	48	-60	270	32	33	1	1.7	1 metre @ 1.7 g/t from 32 metres
CPRC0022	M40/27	RC	352,260	6,757,601	417.1	138	-60	270	121	124	4	1.7	4 metres @ 1.7 g/t from 121 metres
									126	127	1	1.1	1 metre @ 1.1 g/t from 126 metres
CPRC0023	M40/27	RC	352,237	6,757,569	418.1	114	-60	270	95	101	5	1.5	5 metres @ 1.5 g/t from 95 metres
									104	108	4	3.9	4 metres @ 3.9 g/t from 104 metres incl. 2 metres @ 6.5 g/t from 105 metres
CPRC0024	M40/27	RC	352,167	6,757,516	417.7	60	-55	270	No significant intersection				
CPRC0025	M40/27	RC	352,147	6,757,458	416.0	54	-60	270	42	43	1	1.1	1 metre @ 1.1 g/t from 42 metres
CPRC0026	M40/27	RC	352,242	6,757,457	414.7	150	-60	270	140	141	1	8.4	1 metre @ 8.4 g/t from 140 metres
CPRC0027	M40/27	RC	352,274	6,757,476	414.1	174	-60	270	167	168	1	1.0	1 metre @ 1.0 g/t from 167 metres
CPRC0028	M40/27	RC	352,224	6,757,530	416.6	132	-75	255	No significant intersection				
CPRC0029	M40/27	RC	352,228	6,757,529	416.7	132	-80	305	No significant intersection				
CPRC0030	M40/27	RC	352,236	6,757,526	417.1	156	-90	0	116	117	1	2.8	1 metre @ 2.8 g/t from 116 metres
CPRC0031	M40/27	RC	352,239	6,757,571	418.9	168	-80	305	141	143	2	2.7	2 metres @ 2.7 g/t from 141 metres
									152	153	1	3.5	1 metre @ 3.5 g/t from 152 metres
CPRC0032	M40/27	RC	352,240	6,757,565	418.5	156	-80	250	No significant intersection				
CPRC0033	M40/27	RC	352,251	6,757,563	419.7	180	-85	225	No significant intersection				
CPRC0034	M40/27	RC	352,259	6,757,605	416.9	198	-80	220	179	180	1	3.6	1 metre @ 3.6 g/t from 179 metres
									185	189	4	2.8	4 metres @ 2.8 g/t from 185 metres incl. 1 metre @ 7.2 g/t from 185 metres
CPRC0035	M40/27	RC	352,267	6,757,637	418.2	132	-60	270	117	118	5	2.1	5 metres @ 2.1 g/t from 117 metres incl. 1 metre @ 6.3 g/t from 120 metres
CPRC0036	M40/27	RC	352,261	6,757,677	417.3	126	-60	270	114	115	1	2.0	1 metre @ 2.0 g/t from 114 metres
CPRC0037	M40/27	RC	352,203	6,757,571	417.5	60	-60	270	45	48	3	2.4	3 metres @ 2.4 g/t from 45 metres
CPRC0038	M40/27	RC	352,283	6,757,481	414.5	174	-68.5	298	133	134	1	1.0	1 metre @ 1.0 g/t from 133 metres
CPRC0039	M40/27	RC	352,253	6,757,608	417.9	162	-75	270	135	139	4	1.3	4 metres @ 1.3 g/t from 135 metres
									141	144	3	2.5	3 metres @ 2.5 g/t from 141 metres incl. 1 metre @ 5.6 g/t from 143 metres

**Table 1 – Champion Prospect Anomalous Drill Hole Intercepts.**

**Note:** Duplicates and CRM analysis was not used in the calculation of the significant intercepts. A hole listed with “no significant anomalism” means that no sample run returned a value to trigger reporting.

The intercepts above were calculated based on a sample returning an assay value of greater than 1 g/t Au over an interval greater than 2 metres, but not including any more than 1 metre of internal material that graded less than 1 g/t Au. Intervals were based on geology and no top cut off was applied.

As detailed above, sixteen of the 24 holes drilled at Champion returned a significant intercept. The width and consistency of these significant intercepts, further enhances the prospectivity of this prospect, which remains open at depth.

## Champion Prospectivity

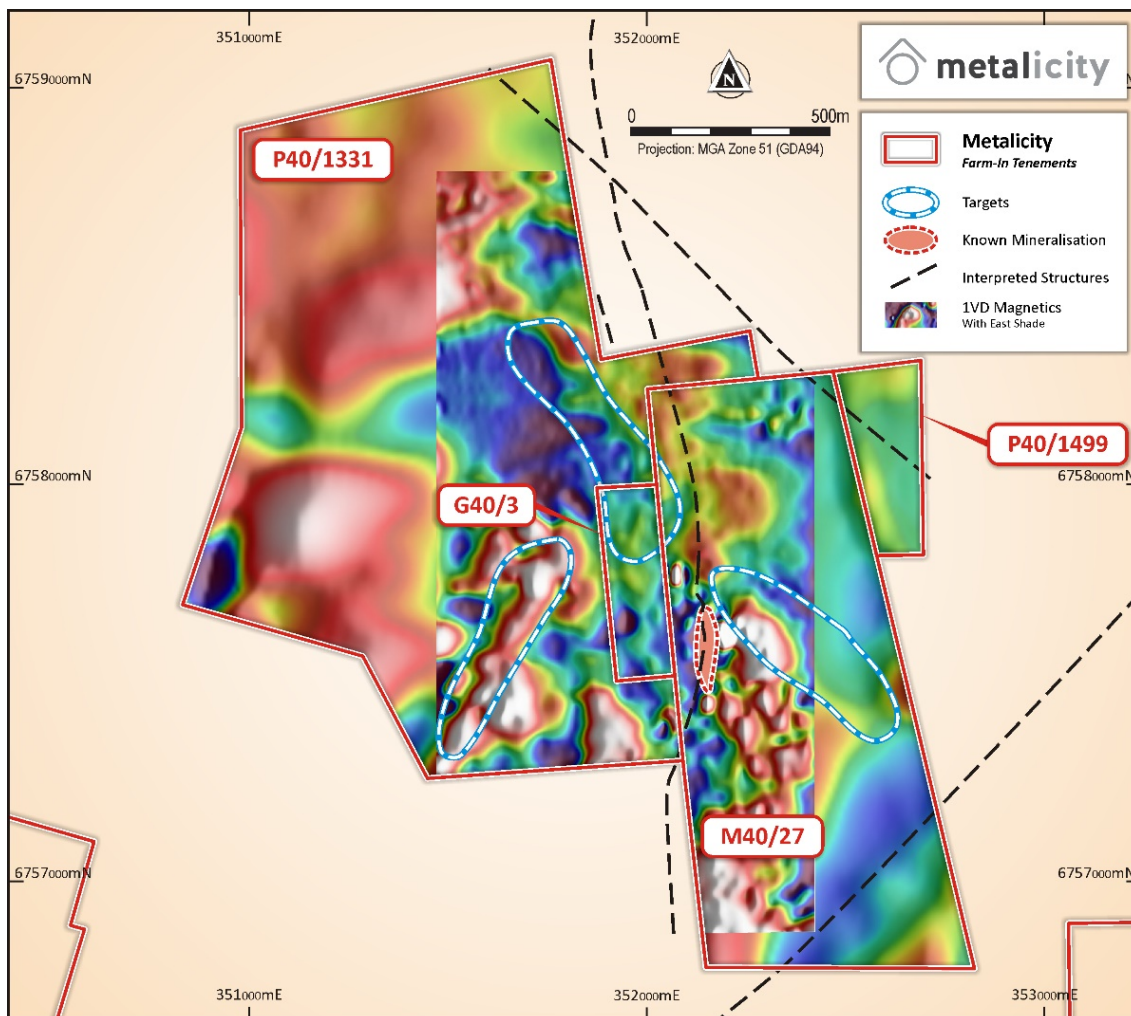
The Company controls a significant parcel of ground around the Champion Prospect, with along strike opportunities to discover and define additional mineralisation. The announcement titled “*Drone Survey Demonstrates 21 Targets with Incredible Prospectivity for the Kookynie Gold Project*” dated 20 September 2020 detailed the results of the geophysical survey around this Prospect (refer to Figure Two).

The Champion Prospect is not only characterised by significant drill hole intercepts, but historical production from a very shallow (<8 metre depth) open pit. The Company has completed an extensive drilling programme at the Champion Prospect, the best result includes\*:

- \*CPRC0004 – 2 metres @ 25.2 g/t Au from 28 metres to EOH, incl;
  - inc. 1 metre @ 42.04 g/t Au from 28 metres.

\*Please refer to announcements: ASX Announcement “Metalicity Reports Drill Hole Intercepts Up To 80 g/t Au & Additional Tenement Acquisition for Kookynie” dated 21 January 2020

The mineralisation observed at the Champion Prospect is in a similar setting to the McTavish-Leipold Prospects with the zones between magnetic highs and lows, with influencing northeast southwest discontinuities hosting the observed gold endowment. However, there appears to be an arcuate nature to the trend in which Champion is hosted with the northern trend from Champion crossing from Mining License 40/27 into Prospecting License 40/1331. Again, northwest-southeast and northeast, southwest trending structures are apparent and have not been evaluated. Therefore, 3 similar signatures have been identified within the Prospect locality that demonstrate a similar signature to known mineralised areas.



**Figure 2 – Champion Trend Imagery (1VD Magnetics – drone survey draped over regional, with east shade) with interpretation\*.**

\*Refer to ASX Announcement titled “Drone Survey Demonstrates 21 Targets with Incredible Prospectivity for the Kookynie Gold Project” dated 20 September 2020.

## Pending Drilling Results

With the completion of all outstanding assays for Champion, Leipold and McTavish Prospects over the last two weeks, the assays from the 3,043 metres drilled at Cosmopolitan in our latest drilling program are the only pending results, as detailed below.

Tenement	Prospect	Metres Drilled	Holes Completed	Holes reported to Date	To be Reported
M40/61	Cosmopolitan	3043	12	0	12
Total		3043	12	0	12

**Table 2 – Pending drilling breakdown as of the date of this report.**

The Company is now in the process of finalising plans for its next exploration efforts. The initial focus will be



at McTavish, along with the 2km of untested strike between McTavish and Leipold, where the Company is becoming increasingly confident these prospects could link up into one bigger system of multiple similar high grades lodes seen at both prospects. Recent results from McTavish were outstanding and included:

- McTRC0049 - 5 metres @ 25.9 g/t from 28 metres
- McTRC0064 - 6 metres @ 20.6 g/t from 19 metres
- McTRC0044 - 3 metres @ 19.1 g/t from 88 metres

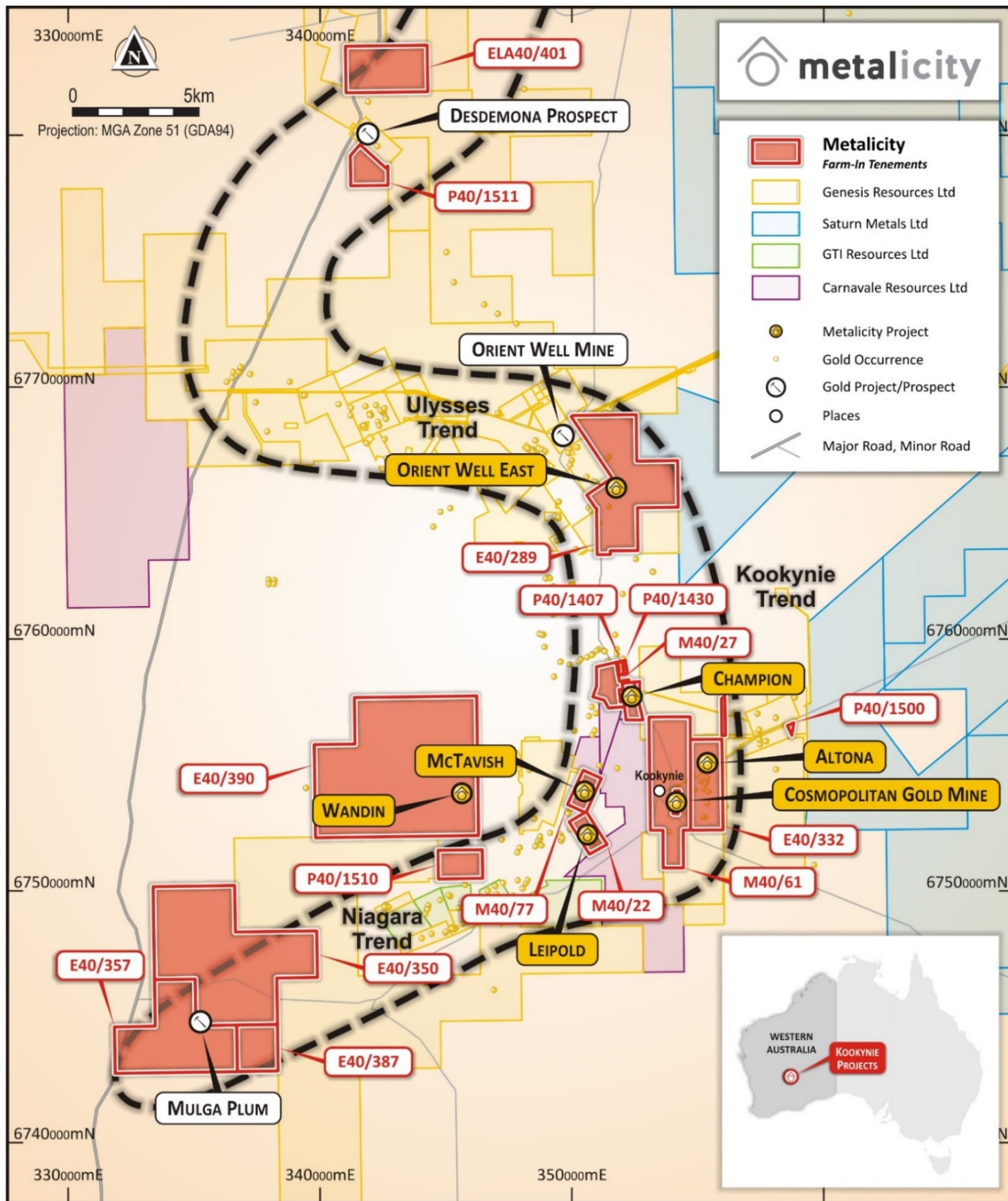


Figure 2 – Kookynie Prospect Locality Map with mineralised trends.

Since the beginning of the year, the Company has completed a total of 102 drill holes for a total of 12,538 metres, which were designed to extend known mineralisation in preparing and stating updated mineral Resource Estimates for the Leipold, McTavish and Champion Prospects. The tenure and extent of the returned mineralisation bodes exceptionally well for this future initial Mineral Resource Estimate at Champion, McTavish and Leipold. With these results received the Company is making significant headway into completing these initial Resource Estimates.

Of significance, is that all three of these prospects remain open in one or more directions and these results clearly define areas to target in the next drilling program.

## Kookynie Gold Project

Kookynie is located 60 kilometres south south-east from Leonora in Western Australia and is host to nine significant prospects: Champion, McTavish, Leipold, Altona, Mulga Plum, Wandin, Diamantina, Cosmopolitan and Cumberland. Diamantina, Cosmopolitan and Cumberland are known collectively as the DCC Trend, please refer to Figure 2 above.

This Announcement is approved by the Board of Metalicity Limited.

## ENQUIRIES

### Investors

Justin Barton  
CEO  
+61 8 6500 0202  
[jbarton@metalicity.com.au](mailto:jbarton@metalicity.com.au)

Metalicity confirms that the Company is not aware of any new information or data that materially affects the information included in the relevant market announcement and, in the case of “exploration results” that all material assumptions and technical parameters underpinning the “exploration results” in the relevant announcements referenced apply and have not materially changed.

### Competent Person Statement

Information in this report that relates to Exploration results and targets is based on, and fairly reflects, information compiled by Mr. Jason Livingstone, a Competent Person who is a Member of the Australian Institute of Geoscientists. Mr. Livingstone is an employee of Metalicity Limited. Mr. Livingstone has sufficient experience that is relevant to the style of mineralisation and type of deposit under consideration and to the activity which he is undertaking to qualify as a Competent Person as defined by the 2012 Edition of the Australasian Code for Reporting of Exploration Results, Mineral Resources and Ore Reserves. Mr. Livingstone consents to the inclusion of the data in the form and context in which it appears.

### Note

This Announcement is designed to also supplement for Nex Metals Exploration as it relates to our farm-in agreement as announced on the 6<sup>th</sup> May 2019 titled “*Metalicity Farms Into Prolific Kookynie & Yundamindra Gold Projects, WA*”.

### Forward Looking Statements

This announcement may contain certain “forward-looking statements” which may not have been based solely on historical facts, but rather may be based on the Company’s current expectations about future events and results. Where the Company expresses or implies an expectation or belief as to future events or results, such expectation or belief is expressed in good faith and believed to have reasonable basis. However, forward-looking statements:

- (a) are necessarily based upon a number of estimates and assumptions that, while considered reasonable by the Company, are inherently subject to significant technical, business, economic, competitive, political and social uncertainties and contingencies;
- (b) involve known and unknown risks and uncertainties that could cause actual events or results to differ materially from estimated or anticipated events or results reflected in such forward-looking statements. Such risks include, without limitation, resource risk, metals price volatility, currency fluctuations, increased production costs and variances in ore grade or recovery rates from those assumed in mining plans, as well as political and operational risks in the countries and states in which the Company operates or supplies or sells product to, and governmental regulation and judicial outcomes; and
- (c) may include, among other things, statements regarding estimates and assumptions in respect of prices, costs, results and capital expenditure, and are or may be based on assumptions and estimates related to future technical, economic, market, political, social and other conditions.

The words “believe”, “expect”, “anticipate”, “indicate”, “contemplate”, “target”, “plan”, “intends”, “continue”, “budget”, “estimate”, “may”, “will”, “schedule” and similar expressions identify forward-looking statements.

All forward-looking statements contained in this presentation are qualified by the foregoing cautionary statements. Recipients are cautioned that forward-looking statements are not guarantees of future performance and accordingly recipients are cautioned not to put undue reliance on forward-looking statements due to the inherent uncertainty therein.

The Company disclaims any intent or obligation to publicly update any forward-looking statements, whether as a result of new information, future events or results or otherwise.

## Appendix One – JORC Code, 2012 Edition – Table 1

### Section 1: Sampling Techniques and Data

Criteria	JORC Code explanation	Commentary
Sampling techniques	<ul style="list-style-type: none"> <li>• Nature and quality of sampling (eg cut channels, random chips, or specific specialised industry standard measurement tools appropriate to the minerals under investigation, such as down hole gamma sondes, or handheld XRF instruments, etc). These examples should not be taken as limiting the broad meaning of sampling.</li> <li>• Include reference to measures taken to ensure sample representivity and the appropriate calibration of any measurement tools or systems used.</li> <li>• Aspects of the determination of mineralisation that are Material to the Public Report.</li> <li>• In cases where 'industry standard' work has been done this would be relatively simple (eg 'reverse circulation drilling was used to obtain 1 m samples from which 3 kg was pulverised to produce a 30 g charge for fire assay'). In other cases more explanation may be required, such as where there is coarse gold that has inherent sampling problems. Unusual commodities or mineralisation types (eg submarine nodules) may warrant disclosure of detailed information.</li> </ul>	<ul style="list-style-type: none"> <li>• Reverse circulation (RC) sampling was conducted by the offsideers on the drill rig and checked at the end of each rod (6 metres) to ensure that the sample ID's matched the interval that was intended to be represented by that sample ID. No issues were seen or noted by the Competent person during the entire drilling campaign. These samples are kept onsite in a secure location available for further analysis if required.</li> <li>• All RC samples were sieved and washed to ensure samples were taken from the appropriate intervals. The presence of quartz veining +- sulphide presence +- alteration was used to determine if a zone was interpreted to be mineralised. If the sample was deemed to be potentially mineralised, the samples were submitted for screen fire assay. If no mineralisation was observed, the sample was submitted for check using fire assay.</li> <li>• All samples were submitted for analysis, no compositing took place.</li> <li>• The quality of the sampling is industry standard and was completed with the utmost care to ensure that the material being sampled, can be traced back to the interval taken from the drill hole for both RC and diamond core.</li> <li>• OREAS standards of 60 gram charges of OREAS 22F (Au grade range of &lt;1ppb Au – this is a blank), OREAS 251 (Au grade range of 0.498ppm Au to 0.510ppm Au), OREAS 219 (Au grade range of 0.753ppm Au to 0.768ppm Au) and OREAS 229b (Au grade range of 11.86ppm Au to 12.04ppm Au) were used in alternating and sporadic patterns at a ratio of 1 QAQC sample in 20 samples submitted. The material</li> </ul>

		used to make these standards was sourced from a West Australian, Eastern Goldfields orogenic gold deposits.
<i>Drilling techniques</i>	<ul style="list-style-type: none"> <li>• <i>Drill type (eg core, reverse circulation, open-hole hammer, rotary air blast, auger, Bangka, sonic, etc) and details (eg core diameter, triple or standard tube, depth of diamond tails, face-sampling bit or other type, whether core is oriented and if so, by what method, etc).</i></li> </ul>	<ul style="list-style-type: none"> <li>• RC drilling used a bit size of 5 ¼ inch.</li> </ul>
<i>Drill sample recovery</i>	<ul style="list-style-type: none"> <li>• <i>Method of recording and assessing core and chip sample recoveries and results assessed.</i></li> <li>• <i>Measures taken to maximise sample recovery and ensure representative nature of the samples.</i></li> <li>• <i>Whether a relationship exists between sample recovery and grade and whether sample bias may have occurred due to preferential loss/gain of fine/coarse material.</i></li> </ul>	<ul style="list-style-type: none"> <li>• RC drilling sample recovery was excellent.</li> <li>• No relationship was displayed between recovery and grade nor loss/gain of fine/course material.</li> </ul>
<i>Logging</i>	<ul style="list-style-type: none"> <li>• <i>Whether core and chip samples have been geologically and geotechnically logged to a level of detail to support appropriate Mineral Resource estimation, mining studies and metallurgical studies.</i></li> <li>• <i>Whether logging is qualitative or quantitative in nature. Core (or costean, channel, etc) photography.</i></li> <li>• <i>The total length and percentage of the relevant intersections logged.</i></li> </ul>	<ul style="list-style-type: none"> <li>• All recovered sample from RC has been geologically logged to a level where it would support an appropriate Mineral Resource Estimate, mining studies and metallurgical test work.</li> <li>• Logging was qualitative based on the 1 metre samples derived from the RC drilling.</li> </ul>
<i>Sub-sampling techniques and sample preparation</i>	<ul style="list-style-type: none"> <li>• <i>If core, whether cut or sawn and whether quarter, half or all core taken.</i></li> <li>• <i>If non-core, whether riffled, tube sampled, rotary split, etc and whether sampled wet or dry.</i></li> <li>• <i>For all sample types, the nature, quality and appropriateness of the sample preparation technique.</i></li> <li>• <i>Quality control procedures adopted for all sub-sampling stages to maximise representivity of samples.</i></li> </ul>	<ul style="list-style-type: none"> <li>• RC samples were cone split from the rig.</li> <li>• All RC samples were dry. All recoveries were &gt;90%.</li> <li>• Duplicates or a CRM standard were inserted every 20 samples.</li> <li>• The Competent Person is of the opinion the sampling method is appropriate.</li> </ul>



	<ul style="list-style-type: none"> <li>• Measures taken to ensure that the sampling is representative of the in situ material collected, including for instance results for field duplicate/second-half sampling.</li> <li>• Whether sample sizes are appropriate to the grain size of the material being sampled.</li> </ul>	
Quality of assay data and laboratory tests	<ul style="list-style-type: none"> <li>• The nature, quality and appropriateness of the assaying and laboratory procedures used and whether the technique is considered partial or total.</li> <li>• For geophysical tools, spectrometers, handheld XRF instruments, etc, the parameters used in determining the analysis including instrument make and model, reading times, calibrations factors applied and their derivation, etc.</li> <li>• Nature of quality control procedures adopted (eg standards, blanks, duplicates, external laboratory checks) and whether acceptable levels of accuracy (ie lack of bias) and precision have been established.</li> </ul>	<ul style="list-style-type: none"> <li>• Fire assay has been selected for RC samples. The methodology employed in these analytical procedures are industry standard with appropriate checks and balances throughout their own processes.</li> <li>• The analytical method employed is appropriate for the style of mineralisation and target commodity present. However, selected entire intercepts with a returned weighted average assay above 5 g/t Au will be selected and analysed using the screen fire method to provide a statistical comparison between the two analytical methods in high grade zones. This is to ensure the high-grade nature (nugget effect) is defined and articulated.</li> <li>• No geophysical tools, spectrometers, handheld XRF instruments were used.</li> <li>• A 1 in 20 standard or duplicate or blank was employed during this programme. QAQC analysis shows that the lab performed within the specifications of the QAQC protocols. The standards used were from OREAS and based on material sourced from within the Eastern Goldfields. Blanks were also sourced from OREAS as well.</li> </ul>
Verification of sampling and assaying	<ul style="list-style-type: none"> <li>• The verification of significant intersections by either independent or alternative company personnel.</li> <li>• The use of twinned holes.</li> <li>• Documentation of primary data, data entry procedures, data verification, data storage (physical and electronic) protocols.</li> <li>• Discuss any adjustment to assay</li> </ul>	<ul style="list-style-type: none"> <li>• No umpire analysis has been performed.</li> <li>• No twinned holes have been completed. However, drill holes have been collared near previously drilled holes but on different orientations.</li> <li>• Data was collected on to standardised templates in the field and data entered at night. Cross checks were performed</li> </ul>

	<p><i>data.</i></p>	<p>verifying field data.</p> <ul style="list-style-type: none"> <li>• No adjustment to the available assay data has been made.</li> </ul>
<p><i>Location of data points</i></p>	<ul style="list-style-type: none"> <li>• <i>Accuracy and quality of surveys used to locate drill holes (collar and down-hole surveys), trenches, mine workings and other locations used in Mineral Resource estimation.</i></li> <li>• <i>Specification of the grid system used.</i></li> <li>• <i>Quality and adequacy of topographic control.</i></li> </ul>	<ul style="list-style-type: none"> <li>• Drill hole collars will be surveyed using a DGPS.</li> <li>• The RC holes were downhole surveyed using a “Champ Gyro multi-shot down hole survey camera”.</li> <li>• GDA94 Zone 51S was used, collars will be picked up by a qualified surveyor using a DGPS (Trimble S7).</li> <li>• The surveyed collar coordinates appear to be sufficient, however, better definition is required of the topography to allow for a JORC 2012 compliant estimation.</li> <li>• Appendix Two contains collar coordinates as drilled:</li> </ul>
<p><i>Data spacing and distribution</i></p>	<ul style="list-style-type: none"> <li>• <i>Data spacing for reporting of Exploration Results.</i></li> <li>• <i>Whether the data spacing and distribution is sufficient to establish the degree of geological and grade continuity appropriate for the Mineral Resource and Ore Reserve estimation procedure(s) and classifications applied.</i></li> <li>• <i>Whether sample compositing has been applied.</i></li> </ul>	<ul style="list-style-type: none"> <li>• The data spacing is sufficient to establish a relatively high confidence in geological and grade continuity, however, peripheral data to support the drill holes requires further work to ensure compliance with JORC 2012 guidelines.</li> <li>• No sample compositing was applied beyond the calculation of down hole significant intercepts.</li> </ul>
<p><i>Orientation of data in relation to geological structure</i></p>	<ul style="list-style-type: none"> <li>• <i>Whether the orientation of sampling achieves unbiased sampling of possible structures and the extent to which this is known, considering the deposit type.</i></li> <li>• <i>If the relationship between the drilling orientation and the orientation of key mineralised structures is considered to have introduced a sampling bias, this should be assessed and reported if material.</i></li> </ul>	<ul style="list-style-type: none"> <li>• Most of the drilling has been perpendicular to the main structure that hosts mineralisation. Secondary structures oblique to the main structure may have influence hanging and foot wall intercepts.</li> <li>• The author believes that the drilling orientation and the orientation of key mineralised structures has not introduced a bias.</li> </ul>
<p><i>Sample security</i></p>	<ul style="list-style-type: none"> <li>• <i>The measures taken to ensure sample security.</i></li> </ul>	<ul style="list-style-type: none"> <li>• The chain of supply from rig to the laboratory was overseen a contract geologist under the supervision of the Competent Person. At no stage has any person or entity outside of the Competent Person, the contract geologist, the drilling contractor,</li> </ul>

		<p>and the assay laboratory came into contact with the samples.</p> <ul style="list-style-type: none"> <li>• Samples dispatched to the laboratory were delivered to the laboratory by a contract geologist, no third-party courier used.</li> </ul>
<i>Audits or reviews</i>	<ul style="list-style-type: none"> <li>• <i>The results of any audits or reviews of sampling techniques and data.</i></li> </ul>	<ul style="list-style-type: none"> <li>• No external audit of the results, beyond the laboratory internal QAQC measures, has taken place.</li> </ul>

## Section 2: Reporting of Exploration Results

Criteria	JORC Code explanation	Commentary
<i>Mineral tenement and land tenure status</i>	<ul style="list-style-type: none"> <li>• <i>Type, reference name/number, location and ownership including agreements or material issues with third parties such as joint ventures, partnerships, overriding royalties, native title interests, historical sites, wilderness or national park and environmental settings.</i></li> <li>• <i>The security of the tenure held at the time of reporting along with any known impediments to obtaining a licence to operate in the area.</i></li> </ul>	<ul style="list-style-type: none"> <li>• Please refer to the tenement column below to where the drill holes were completed.</li> <li>• Nex Metals Explorations Ltd holds the tenure in question. Metalicity is currently performing an earn in option as part of our farm in agreement (please refer to ASX Announcement “<i>Metalicity Farms Into Prolific Kookynie &amp; Yundamindra Gold Projects, WA</i>” dated 6<sup>th</sup> May 2019)</li> <li>• No impediments exist to obtaining a license to operate over the listed tenure.</li> </ul>
<i>Exploration done by other parties</i>	<ul style="list-style-type: none"> <li>• <i>Acknowledgment and appraisal of exploration by other parties.</i></li> </ul>	<ul style="list-style-type: none"> <li>• Nex Metals Explorations Ltd have done a great job of collating the historical drilling completed over the previous 30 years.</li> <li>• The Kookynie Area been subjected to many phases of Exploration commencing with the discovery of gold in 1897 at the Cosmopolitan Gold Mine. Extensive work by Western Mining Corporation between 1934 to 1937 with Aerial Geological and Geophysical Survey of Northern Australia (AGGNSA) between 1937 to 1940. Then with WMC at 1966 and 1986, ASARCO between 1974 to 1975, Square Gold and Minerals in 1981, CRA between 1982 and 1983, and Money Mining in 1992. Between 1993 and 2008, FMR and since 2008 it has been held between A&amp;C Mining and Nex Metals</li> </ul>

		<p>Explorations.</p> <ul style="list-style-type: none"> <li>The historical work completed requires further field verification via re-down hole surveying (if possible) of drill holes beyond 60 metres depth – it appears below this depth; hole deviation becomes a factor in establishing the location of mineralisation in 3D. Furthermore, collar pickups require verification. All laboratory certificates for the assays on file are collated, only recommendation is possibly more duplicate information in mineralised zones.</li> </ul>
<p>Geology</p>	<ul style="list-style-type: none"> <li><i>Deposit type, geological setting and style of mineralisation.</i></li> </ul>	<ul style="list-style-type: none"> <li>Kookynie: <ul style="list-style-type: none"> <li>The project area is in the Keith-Kilkenny Tectonic Zone within the north-northwest trending Archean-aged Malcolm greenstone belt. The Keith-Kilkenny Tectonic Zone is a triangular shaped area hosting a succession of Archean mafic-ultramafic igneous and meta-sedimentary rocks. Regional magnetic data indicates the Kookynie region is bounded to the west by the north-trending Mt George Shear, the Keith-Kilkenny Shear Zone to the east and the Mulliberry Granitoid Complex to the south.</li> <li>There are several styles of gold mineralisation identified in the Kookynie region. The largest system discovered to date is the high-grade mineralisation mined at the Admiral/Butterfly area, Desdemona area and Niagara area. The gold mineralisation is associated with pyritic quartz veins hosted within north to northeast dipping structures cross-cutting 'favourable' lithologies which can also extend into shears along geological contacts. Gold mineralisation tends to be</li> </ul> </li> </ul>



		preferentially concentrated in differentiated dolerite sills associated with pyrite/carbonate/silica/sericite wall rock alteration.
<i>Drill hole Information</i>	<ul style="list-style-type: none"> <li>• A summary of all information material to the understanding of the exploration results including a tabulation of the following information for all Material drill holes: <ul style="list-style-type: none"> <li>○ easting and northing of the drill hole collar</li> <li>○ elevation or RL (Reduced Level – elevation above sea level in metres) of the drill hole collar</li> <li>○ dip and azimuth of the hole</li> <li>○ down hole length and interception depth</li> <li>○ hole length.</li> </ul> </li> <li>• If the exclusion of this information is justified on the basis that the information is not Material and this exclusion does not detract from the understanding of the report, the Competent Person should clearly explain why this is the case.</li> </ul>	<ul style="list-style-type: none"> <li>• For Kookynie (and Yundramindra), please refer to the Company's announcement dated 6th May 2019, "Metalicity Farms Into Prolific Kookynie &amp; Yundamindra Gold Projects, WA", for all historical drill collar information, and selected significant intercepts.</li> <li>• For the drilling performed and subject to this announcement, please see Appendix Two in this announcement.</li> </ul>
<i>Data aggregation methods</i>	<ul style="list-style-type: none"> <li>• In reporting Exploration Results, weighting averaging techniques, maximum and/or minimum grade truncations (eg cutting of high grades) and cut-off grades are usually Material and should be stated.</li> <li>• Where aggregate intercepts incorporate short lengths of high grade results and longer lengths of low grade results, the procedure used for such aggregation should be stated and some typical examples of such aggregations should be shown in detail.</li> <li>• The assumptions used for any reporting of metal equivalent values should be clearly stated.</li> </ul>	<ul style="list-style-type: none"> <li>• All intercepts have been calculated using the weighted average method but are based on 1 metre samples from RC drilling. Specific intervals within an interval have been described as part of the overall intercept statement.</li> <li>• Intercepts were calculated based on a sample returning an assay value of greater than 0.1 g/t Au over an interval greater than 2 metres, but not including any more than 1 metre of internal material that graded less than 0.1 g/t Au. Intervals were based on geology and no top cut off was applied.</li> <li>• No metal equivalents are discussed or reported.</li> </ul>
<i>Relationship between mineralisation widths and intercept lengths</i>	<ul style="list-style-type: none"> <li>• These relationships are particularly important in the reporting of Exploration Results.</li> <li>• If the geometry of the mineralisation with respect to</li> </ul>	<ul style="list-style-type: none"> <li>• Given the shallow dipping nature (approximately -45° on average) of the mineralisation observed at Kookynie, the nominal drilling inclination of -60° lends to close</li> </ul>

	<p><i>the drill hole angle is known, its nature should be reported.</i></p> <ul style="list-style-type: none"> <li>• <i>If it is not known and only the down hole lengths are reported, there should be a clear statement to this effect (eg 'down hole length, true width not known').</i></li> </ul>	<p>to truth width intercepts.</p> <ul style="list-style-type: none"> <li>• However, cross cutting structures within the hanging wall and footwall are noted and may influence the results.</li> </ul>
Diagrams	<ul style="list-style-type: none"> <li>• <i>Appropriate maps and sections (with scales) and tabulations of intercepts should be included for any significant discovery being reported. These should include, but not be limited to a plan view of drill hole collar locations and appropriate sectional views.</i></li> </ul>	<ul style="list-style-type: none"> <li>• Please see main body of the announcement for the relevant figures.</li> </ul>
Balanced reporting	<ul style="list-style-type: none"> <li>• <i>Where comprehensive reporting of all Exploration Results is not practicable, representative reporting of both low and high grades and/or widths should be practiced to avoid misleading reporting of Exploration Results.</i></li> </ul>	<ul style="list-style-type: none"> <li>• All results have been presented. Please refer to Appendix 2.</li> </ul>
Other substantive exploration data	<ul style="list-style-type: none"> <li>• <i>Other exploration data, if meaningful and material, should be reported including (but not limited to): geological observations; geophysical survey results; geochemical survey results; bulk samples – size and method of treatment; metallurgical test results; bulk density, groundwater, geotechnical and rock characteristics; potential deleterious or contaminating substances.</i></li> </ul>	<ul style="list-style-type: none"> <li>• The area has had significant historical production recorded and is accessible via the MINEDEX database.</li> <li>• All stated mineral resources for the Kookynie (and Yundramindra) Projects are pre-JORC 2012. Considerable work around bulk density, QAQC, down hole surveys and metallurgy, coupled with the planned drilling will be required to ensure compliance with JORC 2012 guidelines.</li> </ul>
Further work	<ul style="list-style-type: none"> <li>• <i>The nature and scale of planned further work (eg tests for lateral extensions or depth extensions or large-scale step-out drilling).</i></li> <li>• <i>Diagrams clearly highlighting the areas of possible extensions, including the main geological interpretations and future drilling areas, provided this information is not commercially sensitive.</i></li> </ul>	<ul style="list-style-type: none"> <li>• Metalicity intends to drill the known and extend the mineralised occurrences within the Kookynie and Yundramindra Projects. The Yundramindra Project is currently under the plaintiff process, however Metalicity believes that Nex Metals is well advanced in defending those claims. The drilling will be designed to validate historical drilling with a view to making maiden JORC 2012 Mineral Resource Estimate statements. Metalicity has made the aspirational statement of developing “significant resource</li> </ul>

		<p>and reserve base on which to commence a sustainable mining operation focusing on grade and margin”.</p> <ul style="list-style-type: none"><li>• Diagrams pertinent to the area’s in question are supplied in the body of this announcement.</li></ul>
--	--	--