

Boadicea Resources Ltd



Corporate Presentation

JULY 2021

ASX: BOA

DISCLAIMER

Forward Looking Statements

This presentation is not an offer for financial products in any jurisdiction or a financial product recommendation. The information in this presentation is an overview and does not contain all information necessary for investment decisions. In making investment decisions in connection with any acquisition of financial products, investors should rely on their own examination of Boadicea Resources Ltd (“Boadicea” or the “Company”) and consult with their own legal, tax, business and/or financial advisers.

The information contained in this presentation has been prepared in good faith by the Company. However, no representation or warranty expressed or implied is made as to the accuracy, correctness, completeness or adequacy of any statements, estimates, opinions or other information contained in this presentation. To the maximum extent permitted by law, Boadicea, its directors, officers, employees and agents disclaim liability for any loss or damage which may be suffered by any person through the use or reliance on anything contained in or omitted in this presentation.

Certain information in this presentation refers to the intentions of Boadicea, but these are not intended to be forecasts, forward looking statements or statements about future matters for the purposes of the Corporations Act or any other applicable law. The occurrence of events in the future are subject to risks, uncertainties and other factors that may cause the Company’s actual results, performance or achievements to differ from those referred to in this presentation. Accordingly, Boadicea, its directors, officers, employees and agents do not give any assurance or guarantee that the occurrence of the events referred to in this presentation will actually occur as contemplated.

Competent Persons Statement

The information in this presentation that relates to Exploration Results for the Western Australian based projects was compiled by Mr. G. Purcell who is a member of the Australian Institute of Geoscientists, and is a part time consultant and non executive director to Boadicea. Mr. Purcell has sufficient experience which is relevant to the style of mineralisation and type of deposit under consideration and to the activity being undertaken to qualify as a Competent Person as defined in the 2012 Edition of the ‘Australasian Code for Reporting of Exploration Results, Minerals Resources and Ore Reserves’. Mr. Purcell consents to the inclusion in the Report of the matters based on the information in the form and context in which it appears.

The information in this Announcement that relates to Exploration Results for the Queensland based projects was compiled by Mr J. Reynolds, who is the Managing Director of the Company and is a Member of the Australian Institute of Mining and Metallurgy (Membership number 203138). Mr Reynolds has sufficient experience that is relevant to the style of mineralisation and type of deposit under consideration and to the activity being undertaken to qualify as a Competent Person as defined in the 2012 Edition of the ‘Australasian Code for Reporting of Exploration Results, Minerals Resources and Ore Reserves’. Mr Reynolds consents to the inclusion in the Report of the matters based on his information in the form and context in which it appears.

The information in this release that relates to Geophysical Results and Interpretations is based on information compiled by Karen Gilgallon, Principal Geophysicist at Southern Geoscience Consultants. Karen Gilgallon is a Member of the Australasian Institute of Geoscientists (AIG) and has sufficient experience which is relevant to the style of mineralisation and type of deposit under consideration and to the activity which he is undertaking to qualify as a Competent Person as defined in the 2012 Edition of the ‘Australasian Code for Reporting of Exploration Results, Mineral Resources and Ore Reserves’. Karen Gilgallon consents to the inclusion in the release of the matters based on this information in the form and context in which it appears.

ASX Listing Rule 5.23.2 Statement

The Company is not aware of any new information or data that materially affects the information included in the relevant market announcement(s) and, in the case of estimates of mineral resources or ore reserves, that all material assumptions and technical parameters underpinning the estimates in the relevant market announcement(s) continue to apply and have not materially changed.



SET, READY, GROW

SET

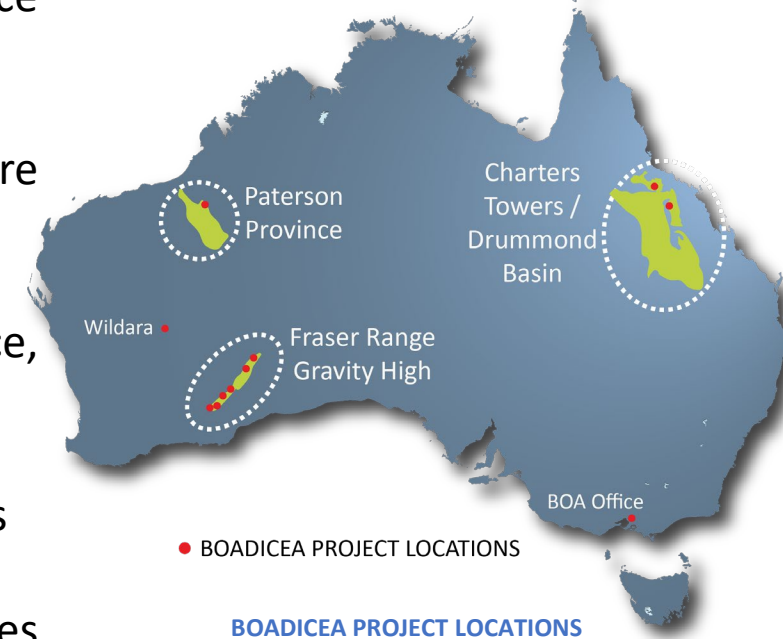
- ✓ BOA main projects are WA's Fraser Range (nickel), Paterson Province (gold/copper) and Charters Towers / Drummond Basin region of Qld (gold)

READY

- ✓ \$5.3m cash with \$3.7m capital raise completed June 20 - increased share liquidity
- ✓ Potential \$50m payday (plus 0.75% NSR Royalty) - IGO - Fraser Range
- ✓ BOA exploration activity increasing – Fraser Range, Paterson Province, Drummond Basin

GROW

- ✓ Exciting progression - IGO exploration of nine (9) BOA Fraser Range tenements
 - ✓ Orion and other intrusions on Symons Hill – “eye” feature on Transline
 - ✓ Visually, good tenor pyrrhotite-chalcopyrite-pentlandite sulphides observed in the Orion
- ✓ Koongulla (Paterson Province) identified a ‘Telfer like’ dome structure
 - ✓ High priority target for gold / copper mineralisation
 - ✓ Land access agreed and additional tenement
- ✓ Qld Drummond Basin - Clarke Reward tenement granted
 - ✓ Attractive, unexplored for intrusive related gold



COMPANY OVERVIEW

Capital Structure	Current
Shares on Issue	77.7m
Listed 2023 Options	19.6m
Market Cap. (@ A\$0.220) (21/07/2021)	A\$17.1m
Fully Diluted (BOAR @ A\$0.03)	A\$17.7m
Top 20 Shareholders	58.5%
Cash (30/06/2021)	A\$5.3m

Board & Management

Jonathan Reynolds (B.ASc., MAusIMM)
 Domenic De Marco (CA)
 Steven Moon (B.Ec., LLB¹)
 James Barrie (B. Bus, GAICD, DipInvRel)

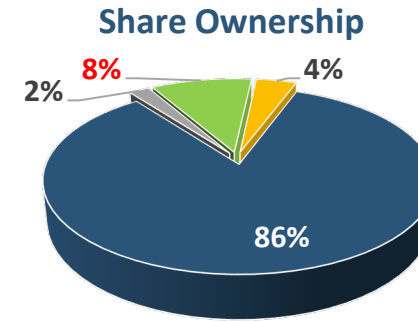
Managing Director
 Non - Executive Director
 Executive Director
 Company Secretary

Technical Consultants

Graeme Purcell (B.Sc. Hons)
 Karen Gilgallon (B.Sc.)

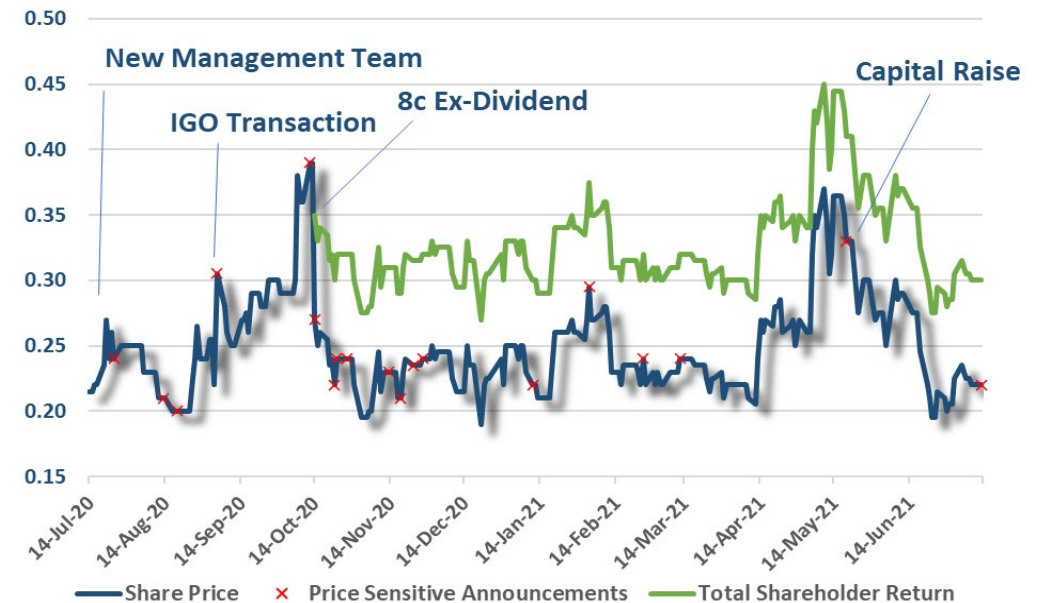
Consultant Geologist
 Consultant Geophysicist

¹ Additional Qualifications: Grad.Dip.Acc., CPA(FPS), GDipAppFin, F.Fin., Dip.F.P



■ Management / Consultants ■ Retail ■ Directors ■ IGO

12 Month Total Shareholder Return



EXPERIENCED BOARD AND MANAGEMENT TEAM



Jon Reynolds
Managing Director

Geologist with 35 years resources industry experience. Experienced in corporate development, project assessment and strategic corporate advice.



Steven Moon
Executive Director

Steven has more than 30 years' experience in senior finance and investment roles in the resource and other sectors.



Dom De Marco
Non - Executive Director

Domenic is a Chartered Accountant and Investor with extensive business and commercial experience in both private and publicly listed companies over a period of 30 years.



Graeme Purcell
Consultant Geologist

Geologist with 25 years experience in resources industry. Experience with major and junior companies both internationally and in Australia. Experience covers all aspects of exploration geology activities.

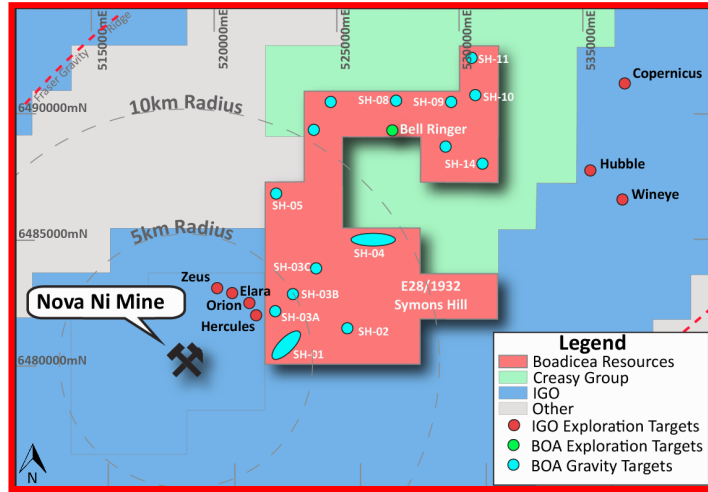


James Barrie
Company Sec.

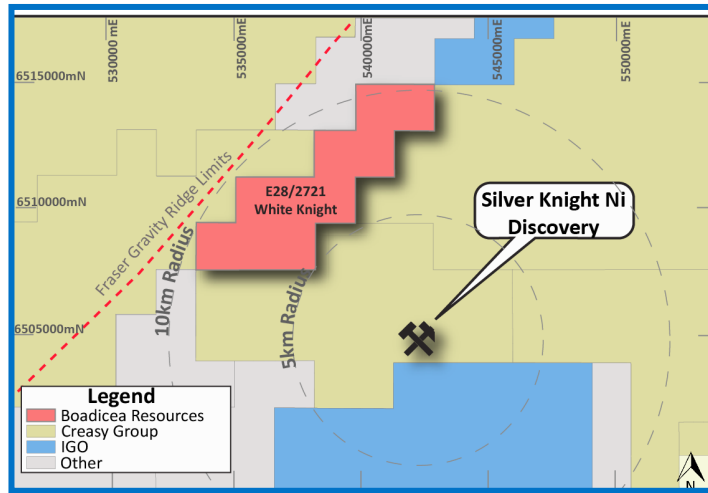
Independent professional CoSec and Non-Executive Director. Ex-WMC. complements the board's skill base including a governance, investor relations, M&A, Treasury and share registry perspective.



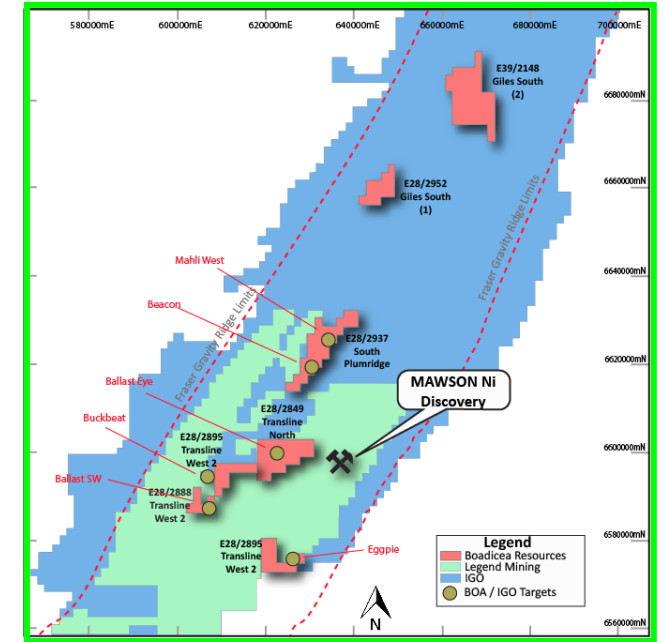
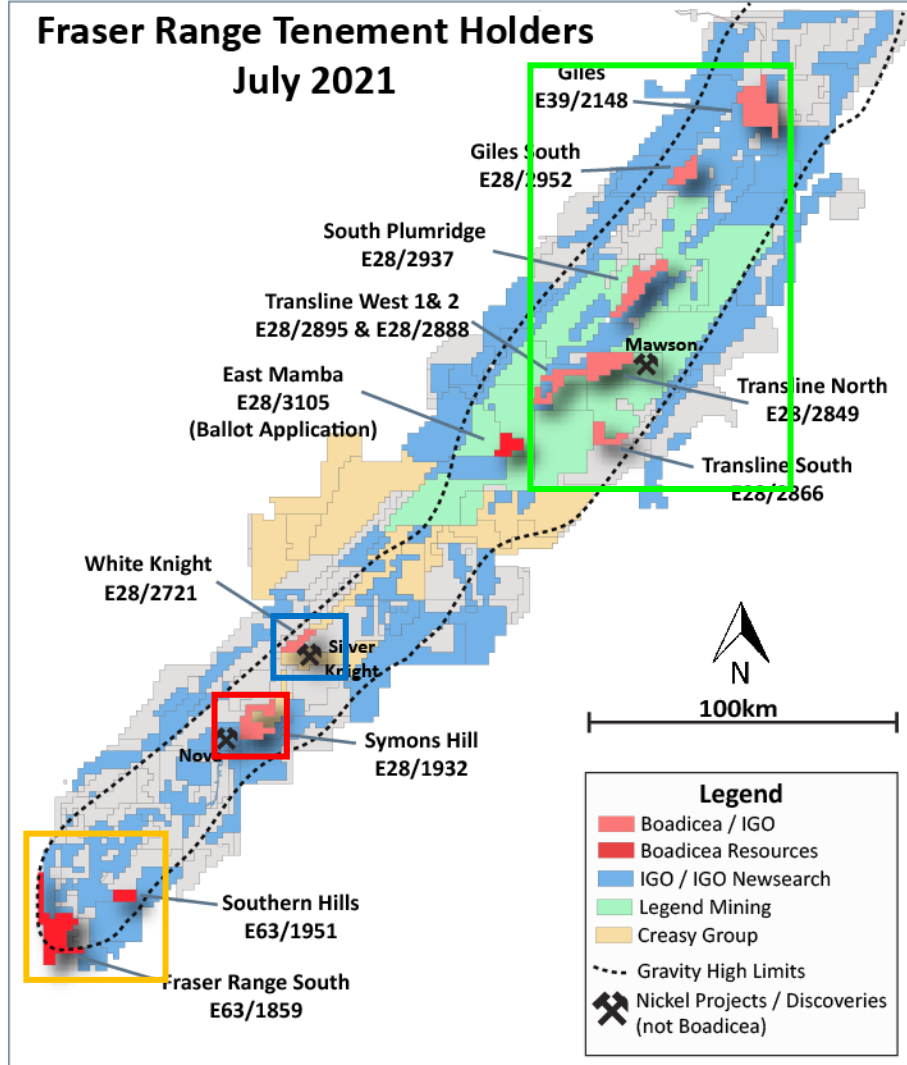
FRASER RANGE – “NEAROLOGY”



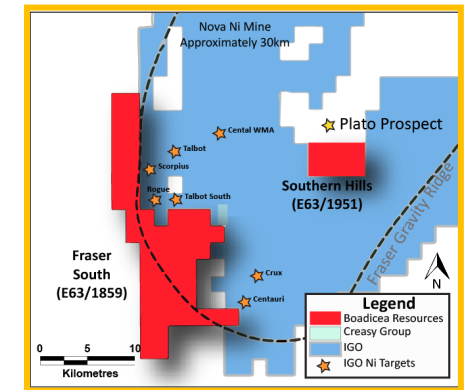
Symons Hill Location



White Knight Location



Transline Tenement Location

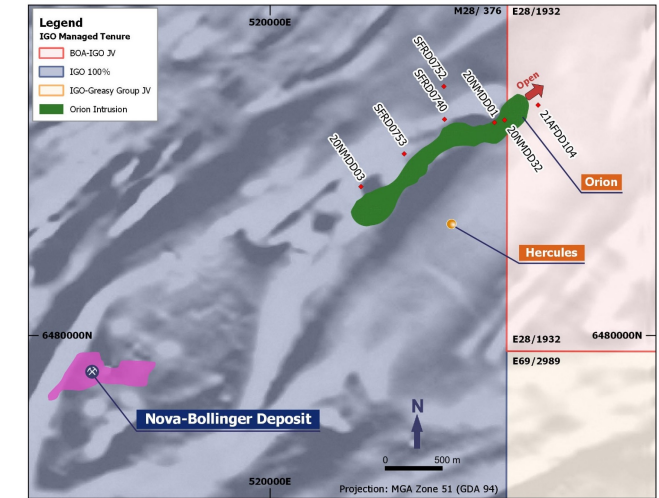


Southern Hills / Fraser South Location



IGO – BOA'S SYMONS HILL EXPLORATION – DIAMOND DRILLING

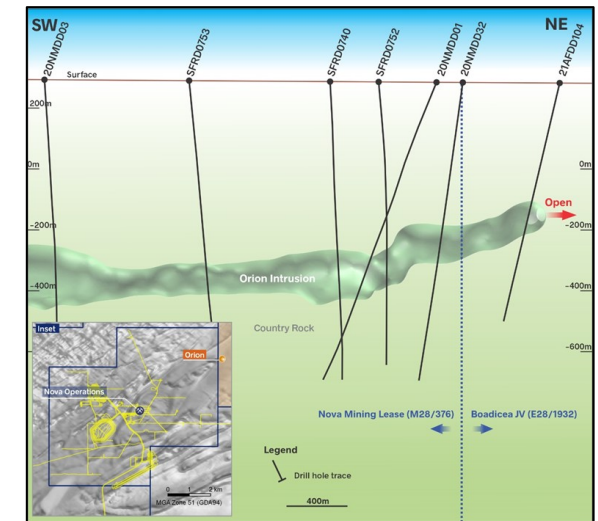
- Primary target the Orion intrusion (chonolith).
- First diamond drill hole completed to a depth of 809.4m (21AFDD104).
- Intersection of visually, good tenor pyrrhotite-chalcopyrite-pentlandite sulphides (awaiting assays).
- Consistent with IGO's interpretation that the system is more prospective towards the northeast.
- Orion chonolith intersected at a shallower depth than planned.
- Paves way for additional testing of Orion within Symons Hill.



Plan view of completed Orion drill holes, Orion intrusion projected to surface, Nova-Bollinger ore body projected to surface



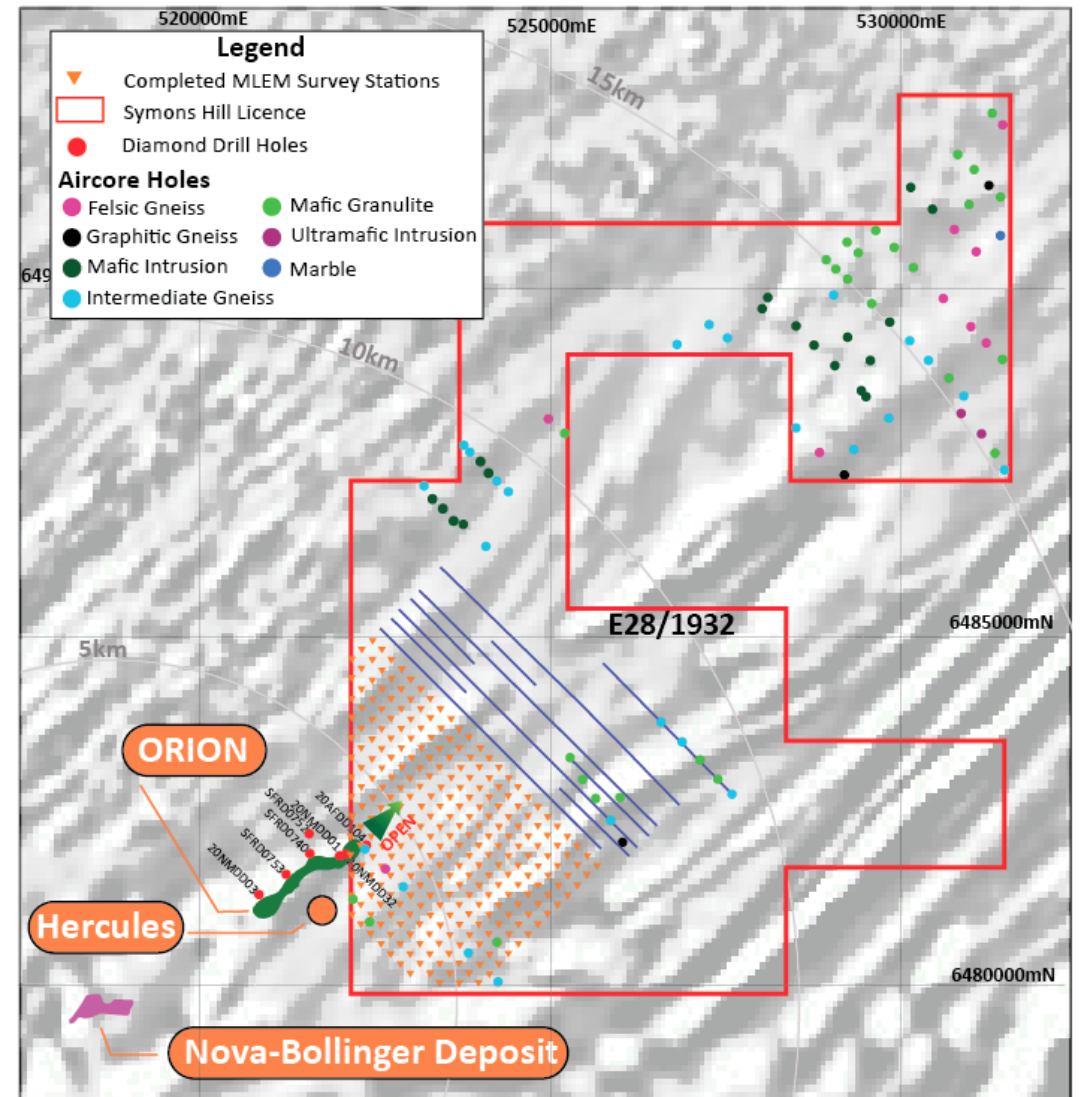
Coarse three-phase Po-Cp-Pn blebs and carbonate veinlets in gabbro-norite at 464m in 21AFDD104.



Simplified geological long section of the Orion Chonolith

SYMONS HILL – MLEM AND AIR CORE DRILLING

- Additional exploration activities completed in Q2 CY2021 on Symons Hill
 - 89 aircore (AC) holes completed.
 - Positive indicators for additional targeting activities identified, with gabbro-norite and ultramafic intrusions being identified.
 - Approximately 50% of the down hole composite samples received. Bottom of the hole assays pending.
 - Anomalous nickel, copper and cobalt results from aircore drilling to date.
 - A total of 287 Low temperature SQUID (LTS) MLEM stations completed, representing 63% of the total planned program.
- Planned activities for Q3 CY2021
 - Completion of MLEM survey and assessment of results.
 - Assays and interpretation of aircore drilling.
 - Planning of diamond drillholes on E28/1932 to follow up on MLEM results.

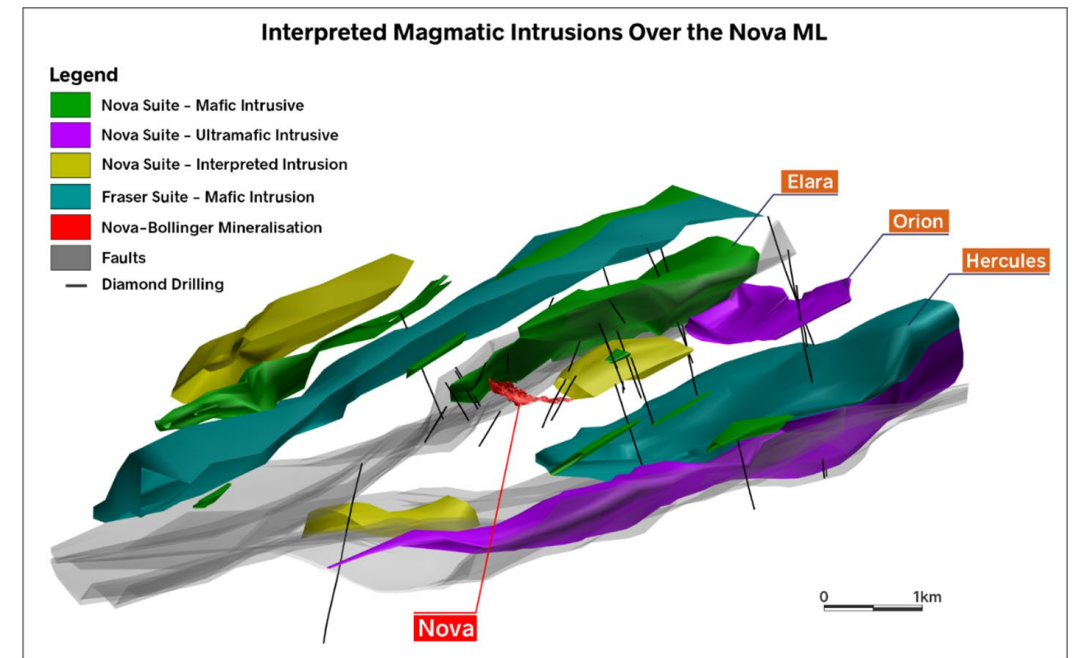


IGO Exploration Activities – Symons Hill.

MULTIPLE TARGETS - INTRUSIONS

NOVA-BOLLINGER – A “CHONOLITH” INTRUSION

- Nova-Bollinger, nickel-copper sulphides are intimately associated with a zoned chonolith (“worm-like”) intrusion.
- IGO has now identified a number of intrusions on BOA’s Symons Hill tenement, including the Orion intrusion; more drilling planned.
- Other intrusions interpreted adjacent to Symons Hill include Hercules and Elara as key valid targets.
- BOA’s Symons Hill Licence (E28/1932) is approximately 3km from Nova/Bollinger mine.
- Proposed Work Programs & Targets on E28/2866, E28/2888, E28/2849, E28/2937.
- Following heritage agreements and surveys, further MLEM surveys and AC drilling will progress on other BOA tenements.
- Key targets include the investigation of an elliptical magnetic eye feature (Ballast Eye) on BOA’s prospective E28/2849 (Transline) tenement near the Legend Mining “Mawson” discovery.

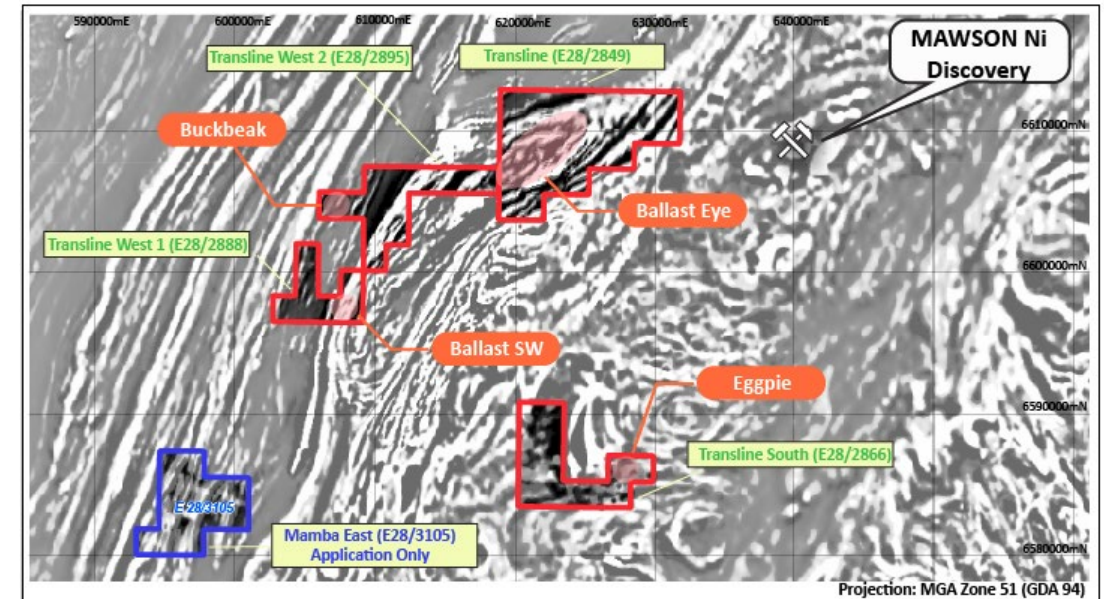


Intrusions Identified by IGO, adjacent to the Symons Hill Licence (Source IGO website).

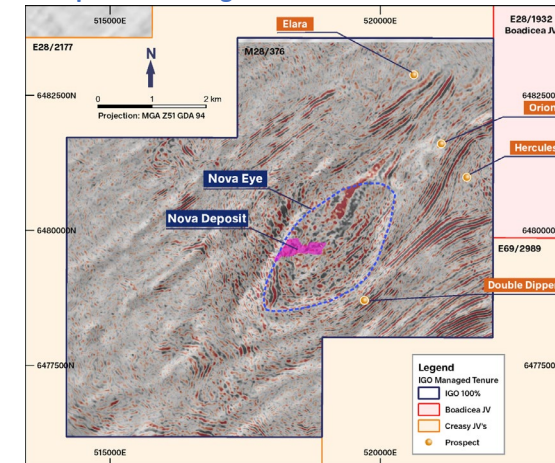
MULTIPLE TARGETS INCLUDING BALLAST 'EYE'

NOVA-BOLLINGER – AN “EYE” FEATURE

- Nova-Bollinger has an elliptical, 'eye-shaped' expression in magnetic imagery, due to the upper mafic/ultramafic intrusive complex.
- IGO has identified an elliptical magnetic eye feature (Ballast Eye) on BOA's prospective E28/2849 (Transline) tenement near the Legend Mining “Mawson” discovery.
- Proposed Work Programs & Targets on E28/2866, E28/2888, E28/2849, E28/2937 (Transline group of tenements).
- Following heritage agreements and surveys, IGO intends to complete MLEM surveys and AC drilling on other BOA tenements.
- Key targets include the investigation of an elliptical magnetic eye feature (Ballast Eye) on BOA's prospective E28/2849 (Transline) tenement near the Legend Mining “Mawson” discovery.



IGO Exploration Targets – BOA's Transline Tenements



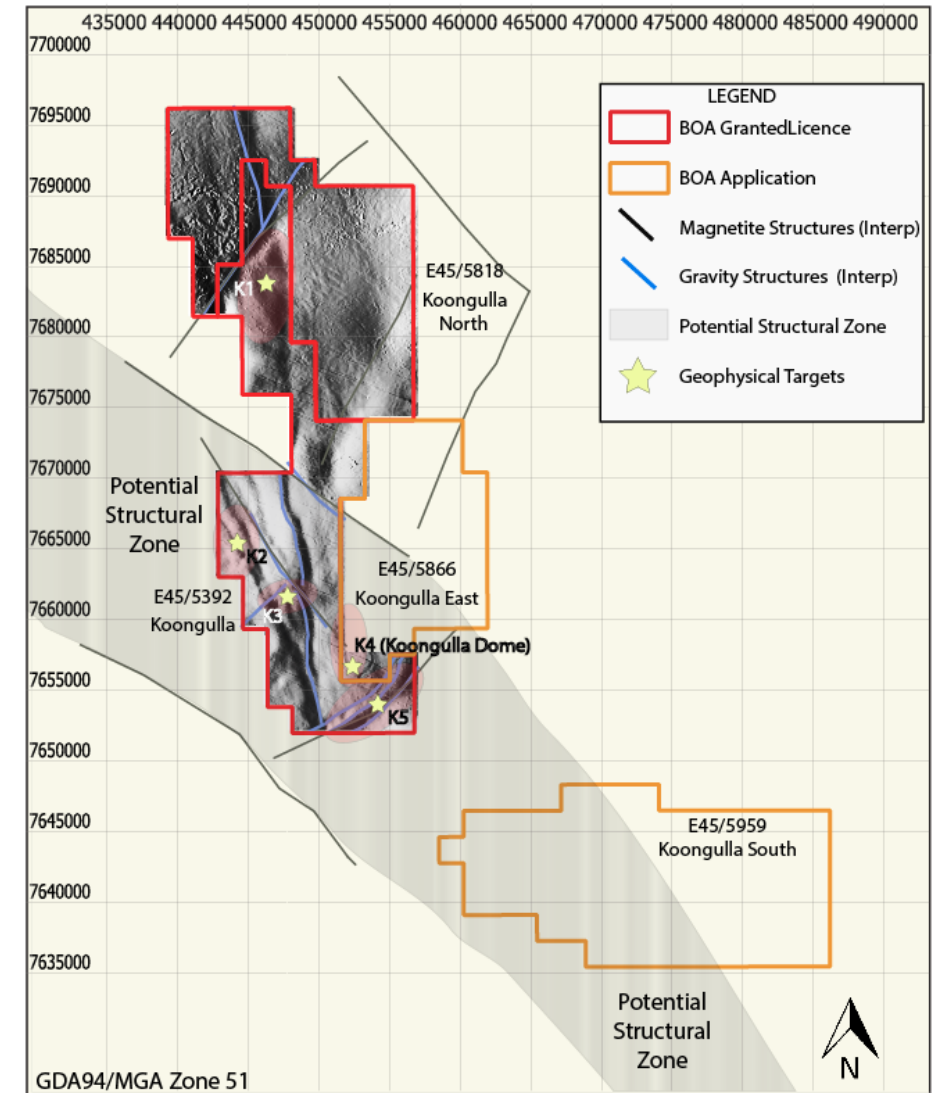
The seismic data over a grey scale total magnetic intensity (TMI) aeromagnetic image that outlines the Nova Eye

PATERSON PROVINCE WA – A SIGNIFICANT PRESENCE

BOA has tenements that cover 885km² in the Paterson Province, as presented below.

Tenement #	Name	Status	BOA %	Area (km ²)
E45/5392	Koongulla	Granted	95%	239.7
E45/5866	Koongulla North	Granted	100%	214.3
E45/5392	Koongulla East	Application	100%	153.4
E45/5959	Koongulla South	Application	100%	277.6
TOTAL				885.0

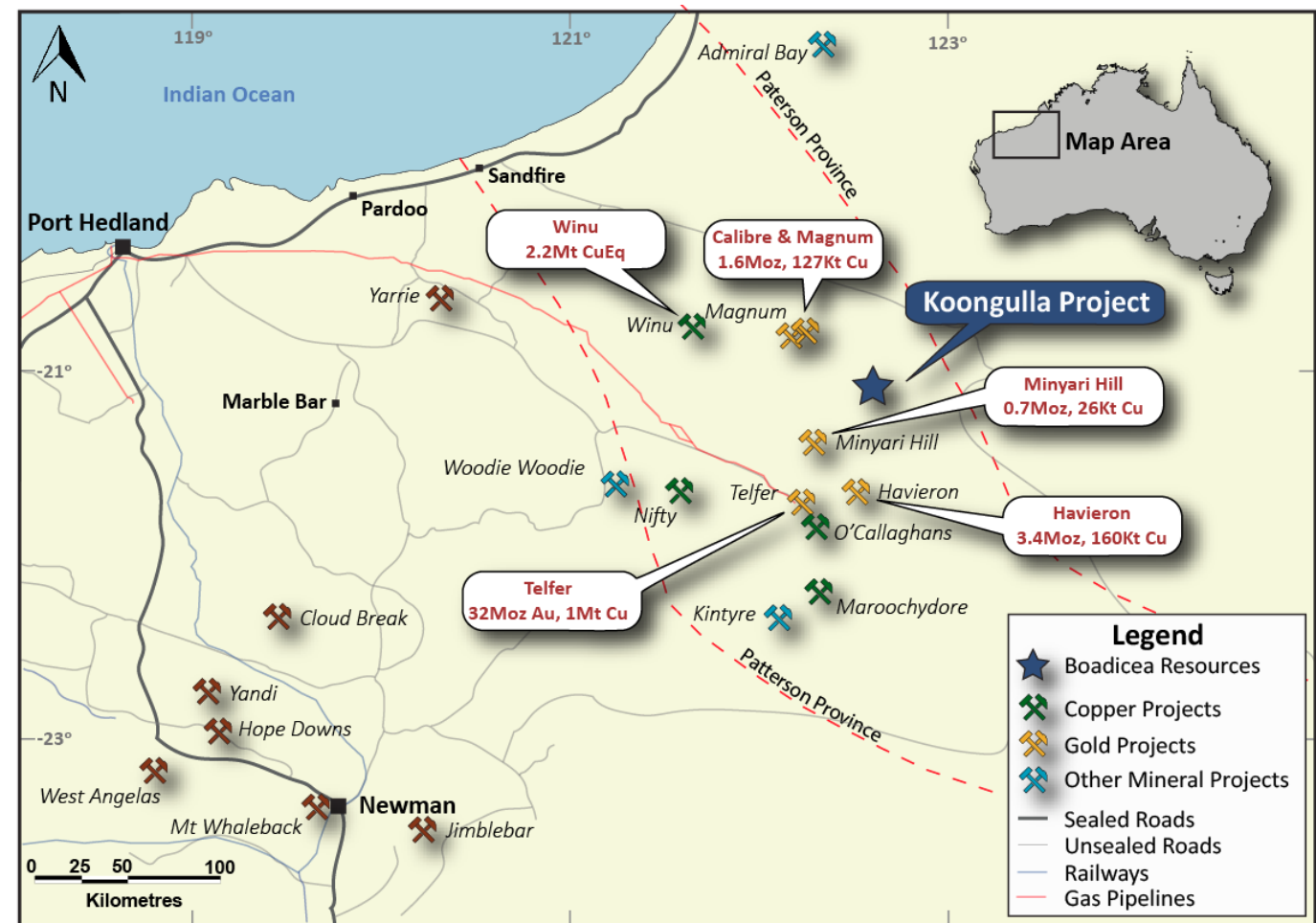
- Koongulla East (E45/5392) granting is expected soon after 11 October 2021.
- Koongulla South (E45/5959) was applied for on 9 July 2021.
 - Targeting potential for extension of an interpreted structural zone.



Koongulla Tenement Position and Exploration Targets

PATERSON PROVINCE – KOONGULLA PROJECT

- Paterson Province primary targeting is for dome features, including world class projects:
 - Telfer (Newcrest) mine: 32Moz Au, 1Mt Cu
 - Citadel JV (Antipa and Rio) including
 - Calibre: 2.1Moz Au, 103.7kt Cu, 1.3Mo Ag
 - Magnum: 339koz Au, 58kt Cu, 511koz Ag
 - Minyari Hill (Antipa): 551koz Au, 22.8kt Cu, 214koz Ag, 3.5kt Co
 - WACA (Antipa): 173koz Au, 3.6kt Cu, 20koz Ag, 620t Co
- Other discoveries include:
 - Havieron (Newcrest and Greatlands): 3.4 Moz Au, 160Kt Cu
 - Winu (Rio): 4.4Moz Au, 1.8Mt Cu, 35Moz Ag
 - Nifty (Cyprium Metals Limited): 637kt Cu
 - Maroochydore (Cyprium Metals Limited): 480t Cu
 - Various farm-ins include: Paterson (Antipa with IGO) Wilki (Antipa with Newcrest)

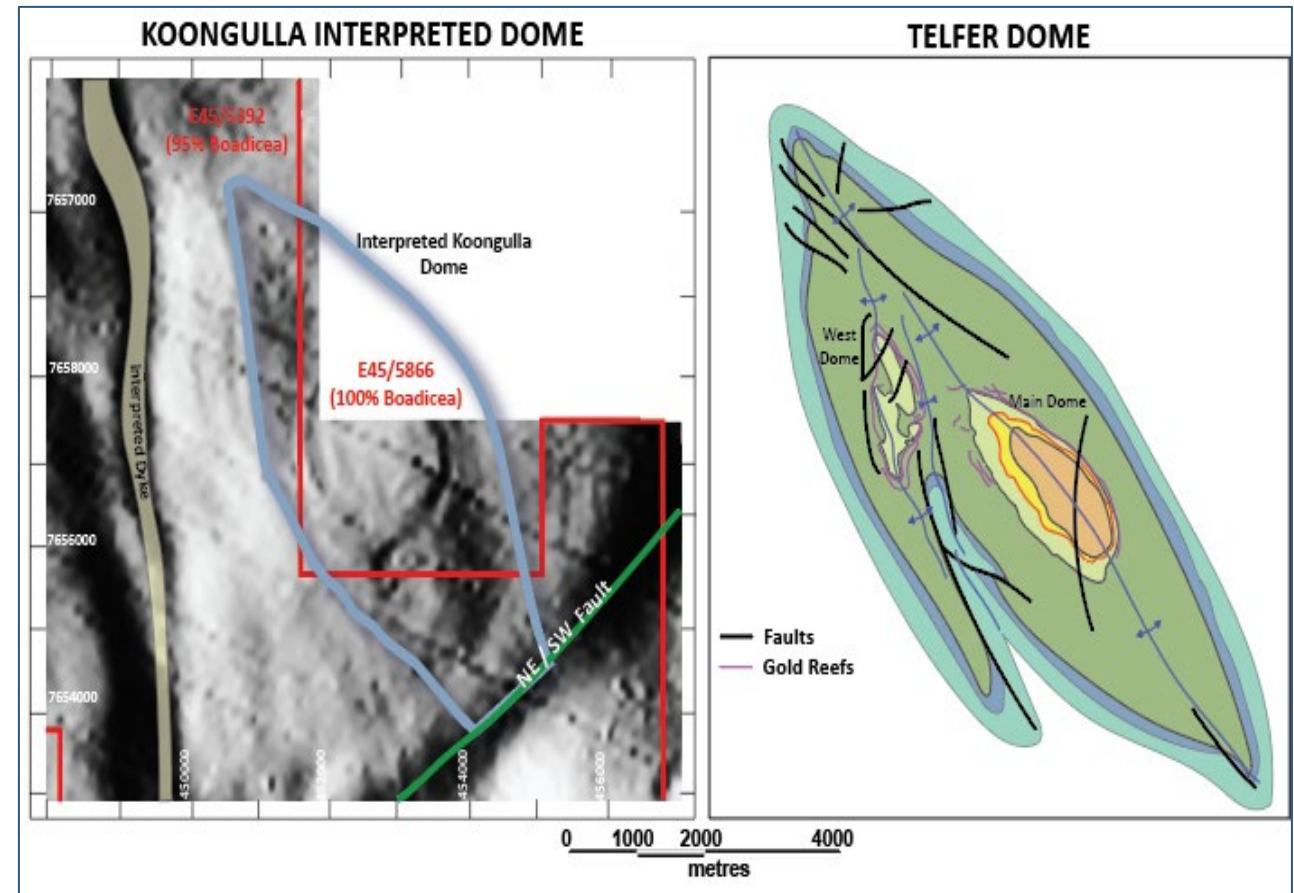


Paterson Province Key Deposits and the Koongulla Project

KOONGULLA DOME - PRIMARY EXPLORATION TARGET

BOA's "Koongulla" project – potential company maker

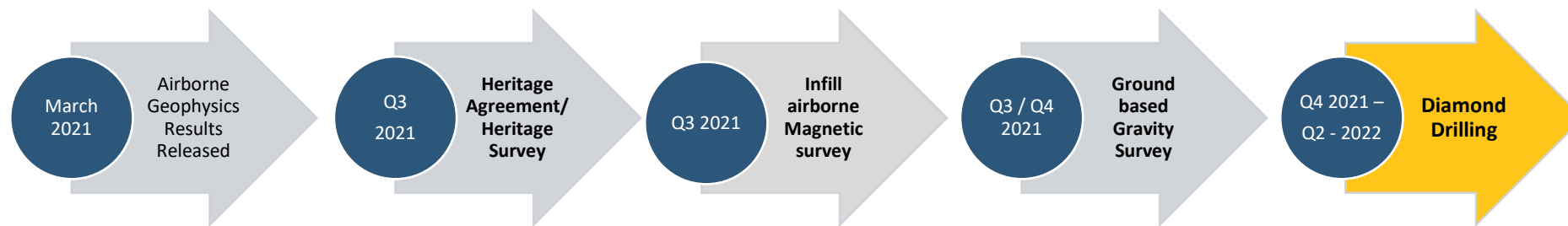
- Geophysics has identified an interpreted dome structure.
- The Koongulla Dome feature straddles Koongulla and Koongulla East tenements (E45/5392 and E45/5866).
- BOA will focus on exploration of the Telfer-look-a-like dome feature.
- Significantly, several deposits in the Paterson Province are associated with known dome structures, including the world class Telfer mine.
- The broad dimensions of the Koongulla Dome are similar to those of Telfer, being 7.5 km long and 3 km wide with its long axis, oriented NW.
- Preliminary depth to basement indications are approximately 200 - 250m - BOA can drill.



Koongulla Dome with Telfer Dome Reference

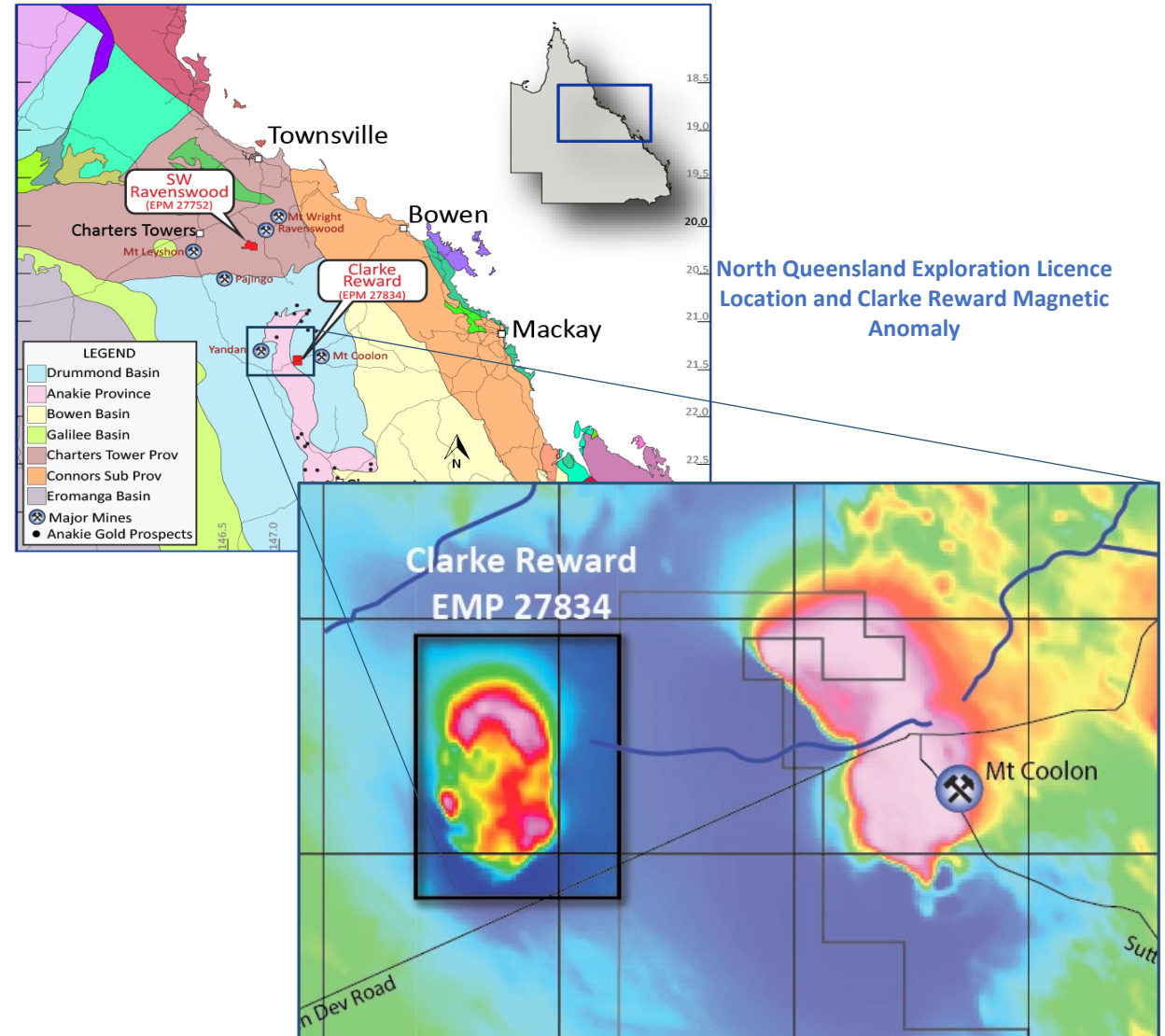
KOONGULLA - ADVANCING EXPLORATION

- Close spaced airborne geophysics was completed in December 2020. Subsequently application for Koongulla East was made.
- Follow-up airborne geophysical survey (100m spacing east-west lines covering 1,842 kilometres), will commence in August 2021, covering all Koongulla East, infilling gaps to the Koongulla Dome data.
- Land Access and Mineral Exploration Agreement completed with WDLAC for three (3) “Koongulla” tenements.
 - The more recent Koongulla South application is likely to be brought under this agreement.
- Exploration - systematic and methodical - deliver the best outcome.
- On-ground gravity survey is planned over the much-anticipated Telfer-look-a like dome feature in Q4 2021.
- Drilling of Koongulla Dome will follow on from the completion of the gravity survey, possibly in Q2 2022.
 - BOA is also evaluating the potential to advance drilling in Q4 2021, ahead of geophysical survey work.
- The dome feature straddles Koongulla and Koongulla East tenements (E45/5392 and E45/5866).



DRUMMOND BASIN (QLD) – CLARKE REWARD

- Drummond Basin known gold endowment is in excess of 7.5m ounces.
- Clarke Reward granted 12 July 2021 (EPM 27834).
- 96km² of a highly anomalous magnetic feature in a structural position at the margin of the Drummond Basin and the Anakie Metamorphic complex.
- The target does not outcrop and the source of anomalism has not been confirmed by drilling.
- Proximal to the Mt Coolon epithermal mine (>1Moz).
- Prospective for Drummond Basin style epithermal gold, other intrusive-related mineralisation systems.
- Never been tested by any modern exploration
- Exploration agreement entered with Bulganunna Aboriginal Corporation, providing BOA with land access
- Proposed drill commencing Q4 2021 – Q2 2022

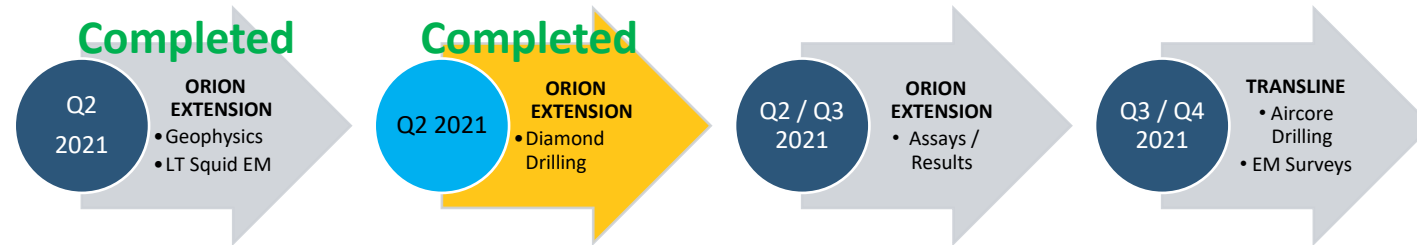


CORE EXPLORATION PROGRAM – BOA TENEMENTS

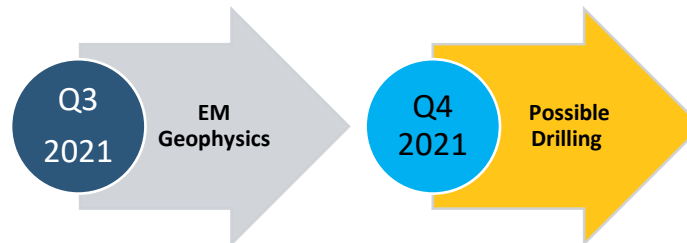
Western Australia

SYMONS HILL & TRANSLINE

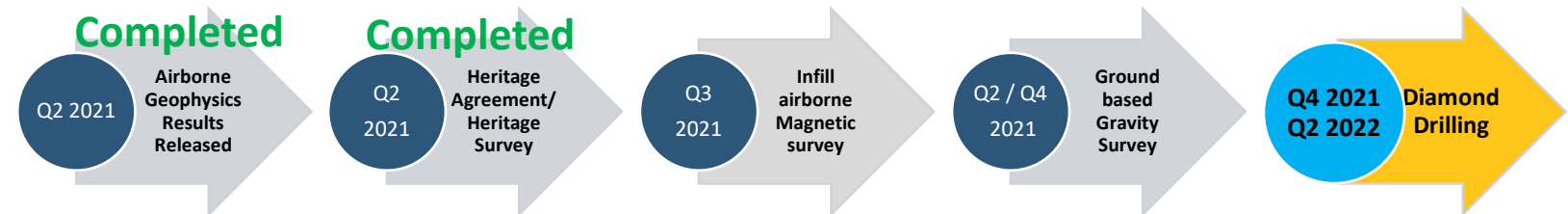
Managed and Funded by IGO



SOUTHERN HILLS

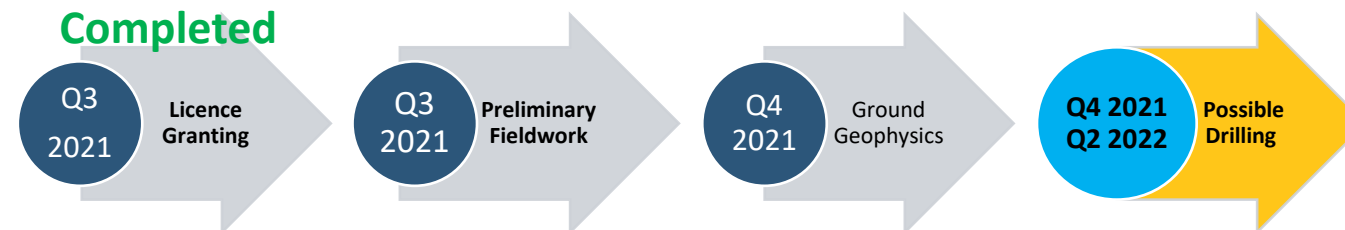


KOONGULLA



Queensland

CLARKE REWARD



WHY INVEST IN BOADICEA?

GOOD MANAGEMENT

- Transformed the company
- Delivered returns to existing shareholders
- Identified, acquired and exploring new, exciting opportunities

GREAT PROJECTS – TARGETING ‘GIANTS’

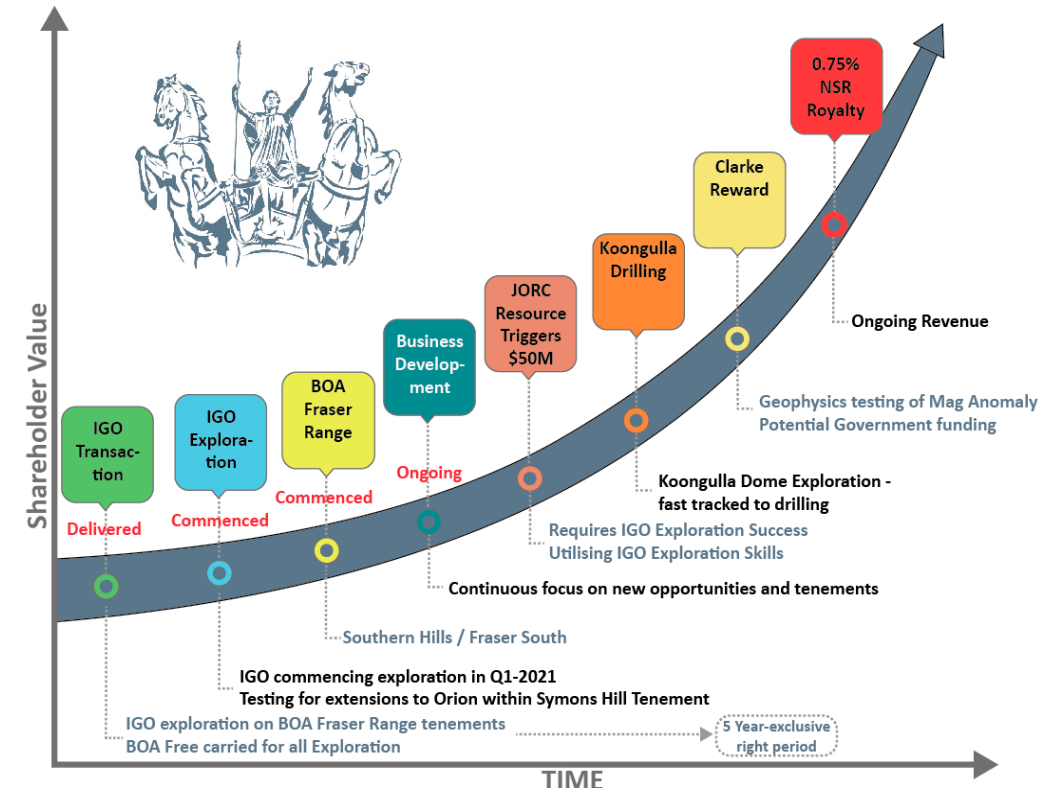
- Nova-Bollinger style Ni-Co-Cu mineralisation in Fraser Range
- Potential for \$50 million plus royalty payday to BOA.
- Telfer style Cu-Au mineralisation in Paterson Province (32Moz Au)
- Ravenswood / Mt Coolon Au Mineralisation in North Queensland (>1Moz)

ACTIVE EXPLORATION

- Fraser Range: Imminent assays from IGO drilling - Orion Extension (Q3 2021)
- Additional IGO exploration for Ballast Eye and other targets
- BOA advancing its own Fraser Range exploration
- Koongulla Dome exploration (Au – Cu)
- Clarke Reward Au on-ground exploration

SHARE LIQUIDITY

- Good market now in BOA shares





FOR MORE INFORMATION PLEASE CONTACT

**MR JON REYNOLDS
MANAGING DIRECTOR
+61 (0)409 858 053**

info@boadicea.net.au

<http://www.boadicea.net.au>