

## ACTIVITIES REPORT JUNE QUARTER 2021

### UTAH URANIUM AND VANADIUM PROJECTS

GTi Resources Limited (**GTi** or the **Company**) is pleased to report on its activities for the June quarter. This past quarter has seen the Utah Uranium projects advanced with significant headway being made as permits have been issued and weather conditions improved.

During the quarter the spring exploration field activity commenced following settlement of the acquisition and transfer of two State of Utah mineral leases (**Leases**) from Anfield Energy Inc. (**Anfield**) (refer ASX release 7 July 2020). The purchase of the Leases serves to join the Jeffery and Rats Nest projects and consolidate ownership across a contiguous 5.5km of interpreted mineralised trend.

The Company commenced fieldwork which aimed to leverage the existing underground developments to aid in advancement of the project (Figure 1). The field team consisting of two BRS professional staff travelled to Hanksville to meet a geophysical logging contractor.

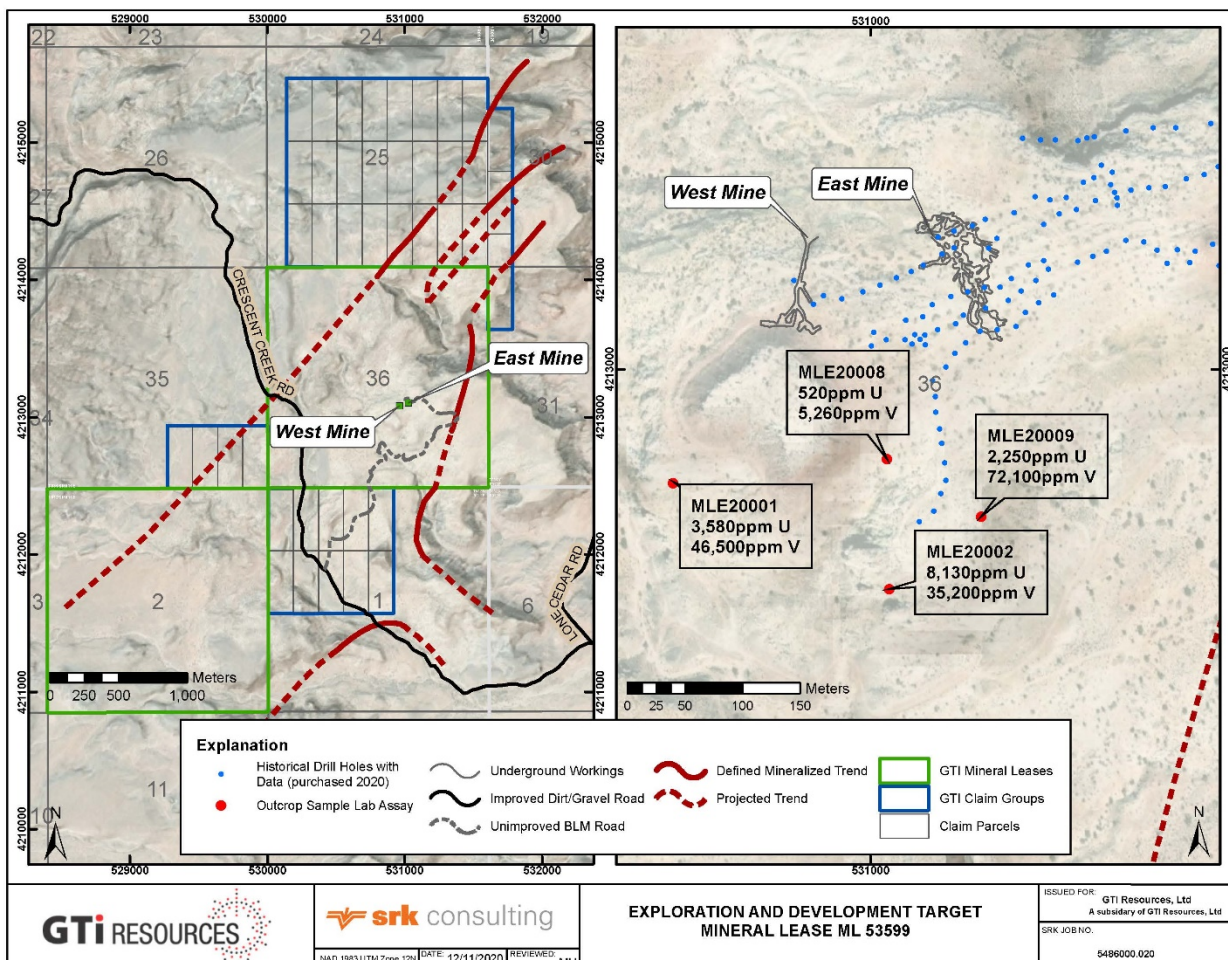


Figure 1. Location of the East Mine and West Mine, along with locations of historical drill holes and assay data previously reported (ASX release October 28, 2020).

GTI executed the maiden field exploration program at the Section 36 Uranium Project from April 21 through April 27, 2021. During that period 56 drill holes were successfully logged to depths up to 20 metres (61 feet).

Geophysical logging was completed by Hawkins CBM Logging of Wyoming, utilising a recently calibrated gamma ray sonde for measurement of naturally occurring radioactivity (total gamma). Prior to deployment in the field, the sonde was calibrated at the U.S. Department of Energy uranium logging Test pits located in Casper, Wyoming, for the known range and uranium grades present at the Jeffrey project. Calibration followed industry standard practices to determine both K-factor and dead time specific to the individual sonde.

Calculation of  $eU_3O_8$  grades from the gamma logs was completed following industry standard procedures to convert counts per second (CPS) to grade ( $\%eU_3O_8$ ), as published by the U.S. Atomic Energy Commission in 1962.

Gamma intercepts were interpreted on 0.5 ft ( $\sim 0.15m$ ) intervals, following US uranium industry standards, with a reporting cut-off of 0.020%  $eU_3O_8$ . The uranium mineralisation is assumed to be in equilibrium based on historical publications on the region.

Highlights included:

- Hole # 36-14, contained 4.5 feet (1.5 metres) from 41 feet at a grade of 0.19%  $eU_3O_8$  (1,900 ppm). Within this zone the best interval was 3 feet (1 metre) at a grade of 0.26%  $eU_3O_8$  (2,600 ppm).
- Over half of drill holes showed at least trace  $eU_3O_8$  mineralisation to a maximum depth of 61 feet.
- Thickness and grade of uranium mineralisation is consistent with that observed in the region's past producing mines that produced in excess of 17.5Mt @ 2,400ppm  $U_3O_8$  (92 mlbs  $U_3O_8$ ) and 12,500 ppm  $V_2O_5$  (482 mlbs  $V_2O_5$ )<sup>1</sup>.

Results of the  $eU_3O_8$  gamma log analysis and interpretation for the 56 newly logged drill holes are provided in **Table 1**, with depths/lengths. All drill holes are vertical, with intercepts interpreted to represent true thicknesses.

The second phase of uranium exploration was subsequently permitted including surface drilling of up to 40 holes as well as the second stage of geophysical logging of an additional 39 existing small diameter drillholes as shown in Figure 2.

Progressing quickly, this second stage phase of downhole geophysical logging of 39 additional historical was concluded during the week of 25 June.

Subsequent to the quarter end, on 6 July, the Company advised that the drilling on Section 36 had also been completed, on time and within budget.

<sup>1</sup> Geology and recognition criteria uranium deposits of the salt wash types, Colorado Plateau Province, Union Carbide Corp, 1981, page 33



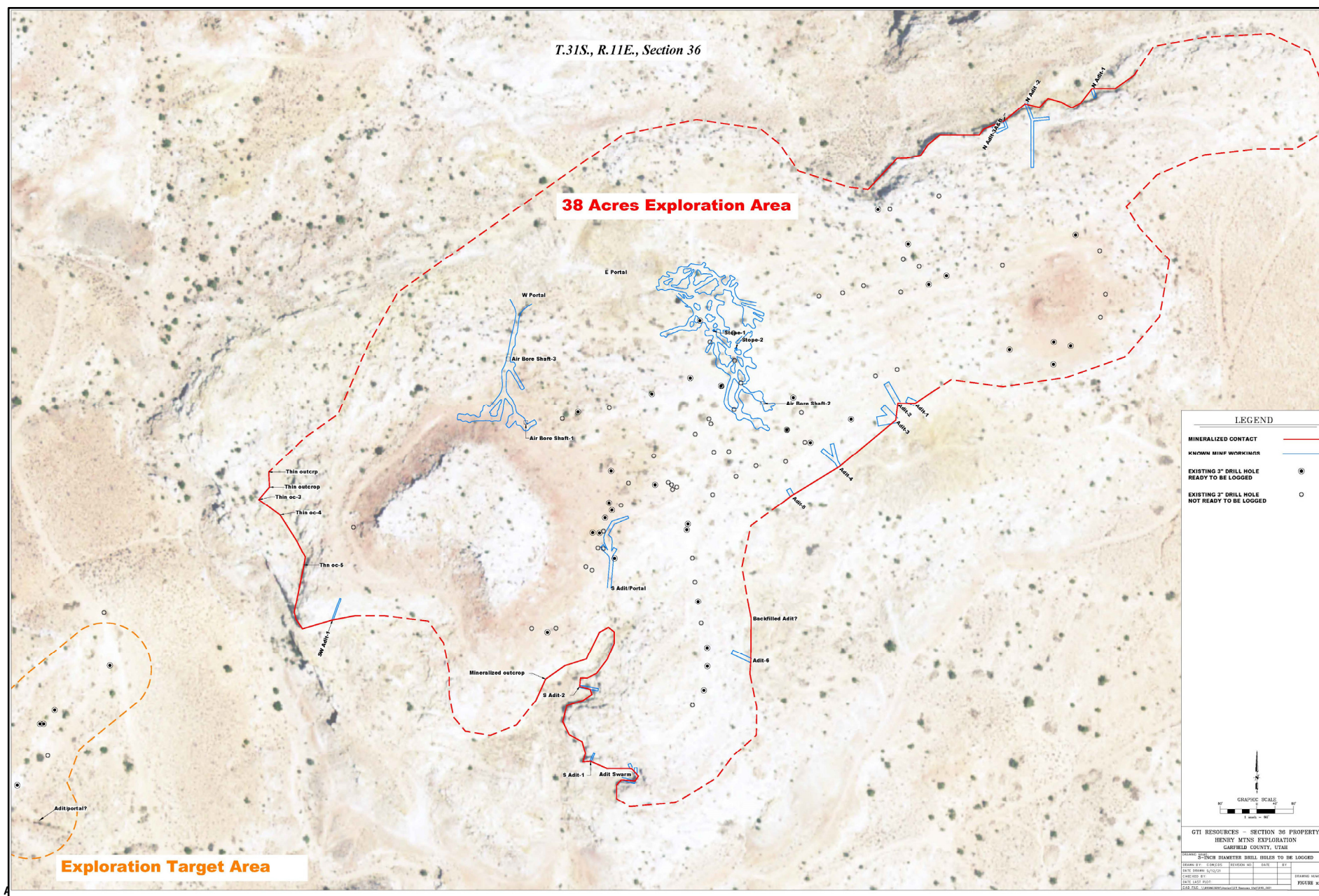


Figure 2. Section 36 Uranium Project, Henry Mountains Utah, Small Diameter Hole Location Map

40 holes were drilled to an average depth of 74 feet (23 metres) using a buggy rig and logged with a gamma probe. Of the 40 holes drilled 23 (58%) were mineralised. Three of these holes showed thicknesses and grade of mineralisation similar to the average reported mining heights and grades. The best hole, 36-1034 contained 5 feet at an average grade of 0.179% eU<sub>3</sub>O<sub>8</sub> (1,790ppm) from 24.5 to 29.5 feet below the ground surface.

The best hole, 36-0318 contained 4.5 feet at an average grade of 0.143% eU<sub>3</sub>O<sub>8</sub> (1,430ppm) from 39 to 43.5 feet below the ground surface.

These results are consistent with the geophysical logging of 56 existing holes reported 19 May 2021 where 52% of the holes were mineralised. The best hole, 36-14 contained 4.5 feet at an average grade of 0.19% eU<sub>3</sub>O<sub>8</sub> (1,900ppm) from 41 to 45.5 feet below the ground surface.

A map showing the location of the drillholes in relationship to historic mining and the mapped outcropping of the host formation is shown in Figure 3.

Cross Sectional views of the project show the relationship of drill data to historical mine workings (**Figure 6**). Detailed drill maps show the location and elevation of the drill holes and the depth, thickness, and grade of mineralised intercepts.

Referring to the detailed drill hole maps, Figures 3, 4, and 5:

- Figure 3, West Exploration Target Area. Mineralisation was discovered in in this area. The thicknesses, and grades encountered were less than the main areas of the project, but this is a positive indication that mineralisation is present throughout the area.
- Figure 4, vicinity of the South, West and East Portals. Three holes with significant mineralisation were completed. One between a small adit at outcrop south of the East Portal and two between the South and East Portals. This is a positive indication that mineralisation extends between the South and East portals and between the East portal and the outcrop to the south.
- Figure 5, area northeast of the East Portal. Two holes with significant mineralisation were completed approximately 250 feet from the East Portal mine workings. Both holes contained two mineralised horizons. The upper horizon at an elevation of 5325 to 5330 feet is similar to the elevation mined at the East Portal. The lower horizon was 20 – 30 feet deeper than the elevation mined from the east portal at an elevation of 5308 to 5316 feet. This finding is like that of the Jefferey project (ASX Release dated 2 July 2020) which also encountered a second deeper mineralised sand horizon. The presence of an additional mineralised sandstone horizon expands the exploration potential of the project.

In addition, 32 newly identified historical drill holes were also identified and logged using the gamma probe. This program brings the total drill hole database for the project to 128 drill holes. Where feasible, samples were collected from mineralised horizons and will be assayed for uranium and vanadium to assess radiometric equilibrium and the ratio of vanadium to uranium.



This next phase of exploration drilling on Section 36 (adjacent to and along strike from GTI's Jeffrey and Rats Nest Projects) was focused on the exploration target areas in proximity to the principal existing underground mines, the East and West mines (see ASX release on 26 June, 2021).

Initial downhole gamma  $eU_3O_8$  assay results showed new mineralisation in the West Exploration Target Area and the drilling confirmed extensions of the mineralised envelope in proximity to the historical underground mine workings between the South and East portals and between the East portal and the outcrop to the south. Mineralisation was also encountered in a slightly deeper horizon northeast of the East Portal (see ASX release on 21 July 2021). Chemical assays including vanadium assays are expected during late August or early September.

The Company believes that the shallow nature of the mineralisation supports continued low-cost, rapid exploration advancements. The Company is working to further interpret these results in advance of confirming follow-up fieldwork. Pending results of this campaign, the Company is targeting further drilling towards development of a JORC code compliant uranium mineral resource for Section 36 and other areas within the Henry Mountain Uranium and Vanadium Project.

**Table 1: Section 36 Uranium Project, Henry Mountains Utah, Geophysical Logging Results**

Hole ID	ELEV Intercept BTM	Depth Intercept Top	Depth Intercept Btm	Grade % U3O8e	Thickness (Ft)	GT
36-10	5319.0	40.0	44.0	<0.02	4	Trace
36-11		0.0	0.0	0.000	0	0
36-12		0.0	0.0	0.000	0	0
36-13	5333.0	44.5	49.0	<0.02	4.5	Trace
36-14	5336.5	41.0	45.5	0.190	4.5	0.855
36-14A		0.0	0.0	0.000	0	0
36-15	5344.0	38.5	41.0	0.052	2.5	0.13
36-16		0.0	0.0	0.000	0	0
36-17		0.0	0.0	0.000	0	0
36-18		0.0	0.0	0.000	0	0
36-18A		0.0	0.0	0.000	0	0
36-19	5335.5	49.0	49.5	<0.02	0.5	Trace
36-20		0.0	0.0	0.000	0	0
36-21		0.0	0.0	0.000	0	0
36-22		0.0	0.0	0.000	0	0
36-23	5360.5	23.0	25.5	0.036	2.5	0.09
36-24		0.0	0.0	0.000	0	0
36-25		0.0	0.0	0.000	0	0
36-26		0.0	0.0	0.000	0	0
36-27		0.0	0.0	0.000	0	0
36-28	5350.5	26.5	32.5	0.030	6	0.18
36-29		0.0	0.0	0.000	0	0
36-30		0.0	0.0	0.000	0	0
36-31	5342.5	35.5	37.5	<0.02	2	Trace
36-32		0.0	0.0	0.000	0	0
36-33		0.0	0.0	0.000	0	0
36-34	5358.0	38.5	40.0	0.031	1.5	0.0465
36-35	5352.5	42.5	45.5	<0.02	3	Trace
36-36		0.0	0.0	0.000	0	0
36-37		0.0	0.0	0.000	0	0
36-38		0.0	0.0	0.000	0	0
36-39		0.0	0.0	0.000	0	0
36-40		0.0	0.0	0.000	0	0
36-41		0.0	0.0	0.000	0	0
36-42		0.0	0.0	0.000	0	0
36-43		0.0	0.0	0.000	0	0
36-44		0.0	0.0	0.000	0	0
36-45		0.0	0.0	0.000	0	0
36-46		0.0	0.0	0.000	0	0
36-47		0.0	0.0	0.000	0	0
36-48		0.0	0.0	0.000	0	0
36-49	5299.0	29.0	40.0	0.035	11	0.385
36-50		0.0	0.0	0.000	0	0
36-51		0.0	0.0	0.000	0	0
36-52	5321.0	34.5	40.0	<0.02	5.5	Trace
36-53		0.0	0.0	0.000	0	0
36-54		0.0	0.0	0.000	0	0
36-55		0.0	0.0	0.000	0	0
36-56	5310.0	43.0	54.0	<0.02	11	Trace
36-57	5327.5	44.0	46.5	0.106	2.5	0.265
36-58		0.0	0.0	0.000	0	0
36-59	5323.5	47.5	48.5	0.045	1	0.045
36-60		0.0	0.0	0.000	0	0
36-61		0.0	0.0	0.000	0	0
36-62	5305.5	31.0	34.5	<0.02	3.5	Trace
36-63		0.0	0.0	0.000	0	0
36-64		0.0	0.0	0.000	0	0
36-65		0.0	0.0	0.000	0	0
36-66		0.0	0.0	0.000	0	0
36-67	5348.0	15.5	17.0	0.032	1.5	0.048
36-68		Not Logged due to irregular hole dimensions 31 feet deep				
36-69		0.0	0.0	0.000	0	0
36-7	5368.0	0.0	0.0	0.000	0	0
36-70		0.0	0.0	0.000	0	0
36-71		Not Logged due to irregular hole dimensions 24 feet deep				
36-72	5332.5	9.5	22.5	0.023	13	0.299
36-73	5331.5	10.0	22.5	0.023	12.5	0.2875
36-74	5336.5	27.0	31.5	0.026	4.5	0.117
36-74	5350.0	16.0	18.0	0.038	2	0.076
36-75	5336.0	24.5	29.0	0.044	4.5	0.198
36-75	5345.0	18.5	20.0	0.034	1.5	0.051
36-76	5349.5	15.5	17.5	0.050	2	0.1
36-77	5340.0	21.5	29.0	0.028	7.5	0.21
36-78	5362.0	18.5	21.0	0.039	2.5	0.0975
36-78	5357.0	25.0	26.0	0.027	1	0.027
36-79	5373.0	16.0	18.0	0.036	2	0.072
36-8	5373.0	0.0	0.0	0.000	0	0
36-80	5384.5	9.0	14.5	<0.02	5.5	Trace
36-81	5371.0	Not Logged _Discovered Late 55 ft deep				
36-9	5372.0	0.0	0.0	0.000	0	0

ACTI  
Level

1



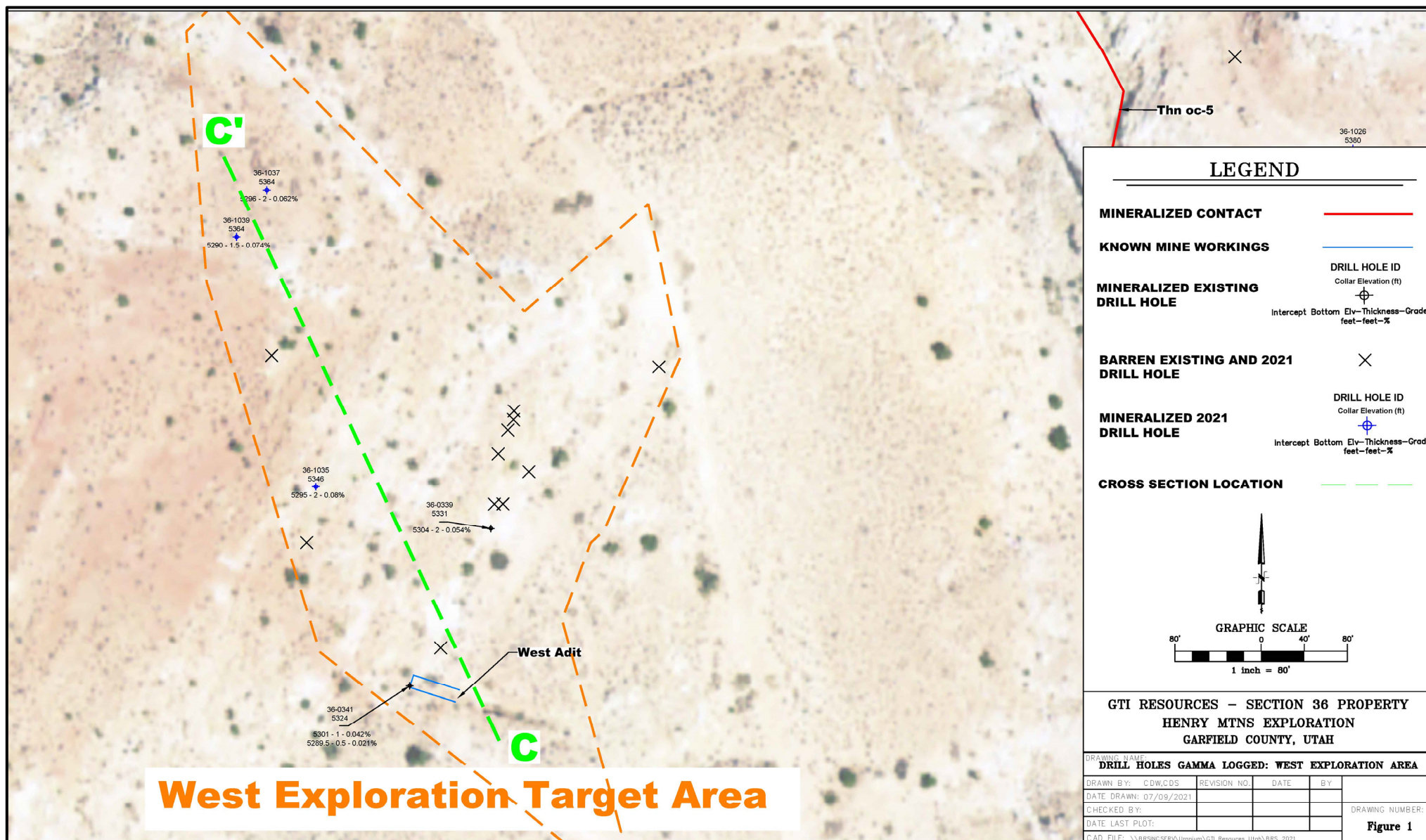


Figure 3. Section 36 Uranium Project, Henry Mountains Utah, Detailed Drill Hole Map



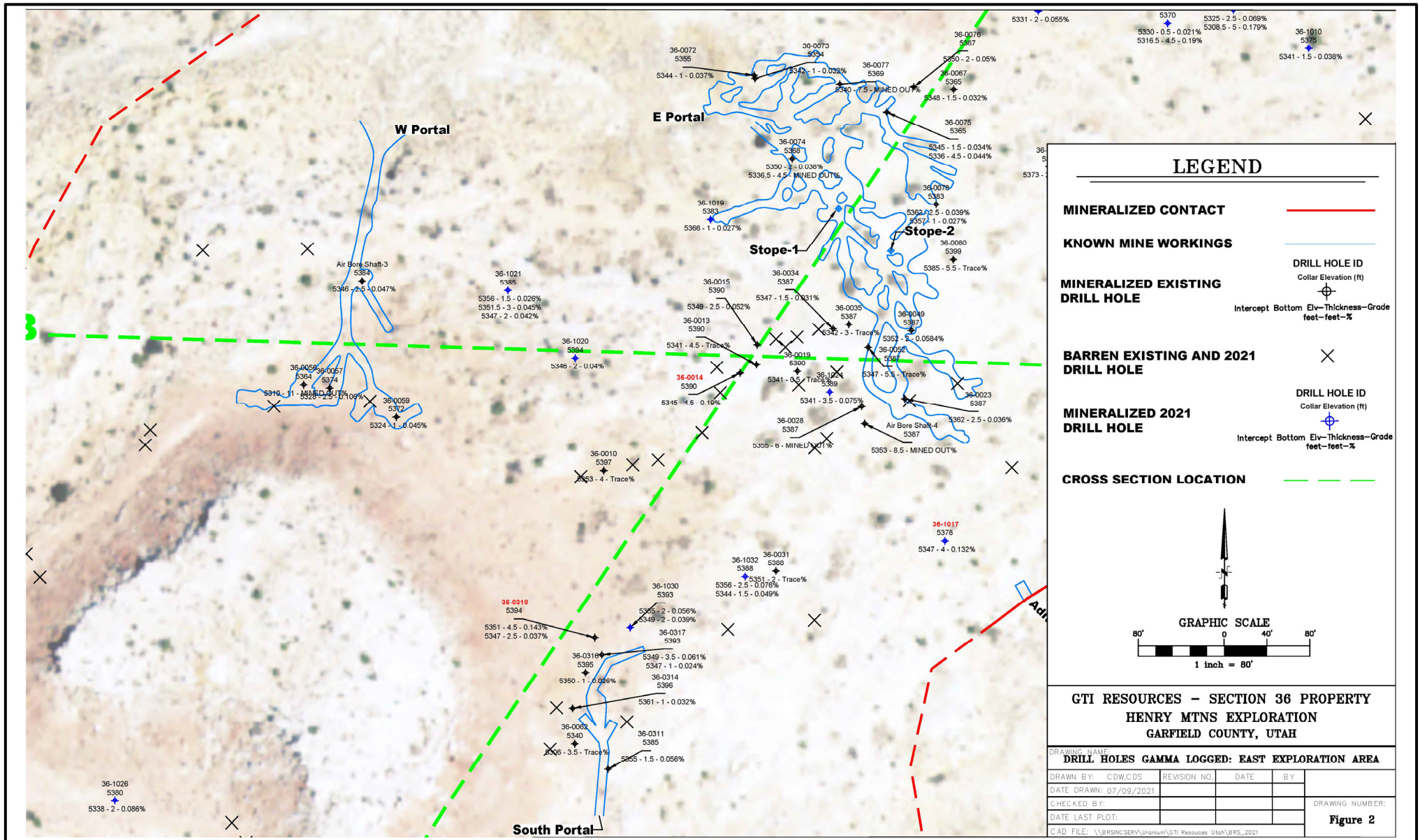


Figure 4. Section 36 Uranium Project, Henry Mountains Utah, Detailed Drill Hole Map



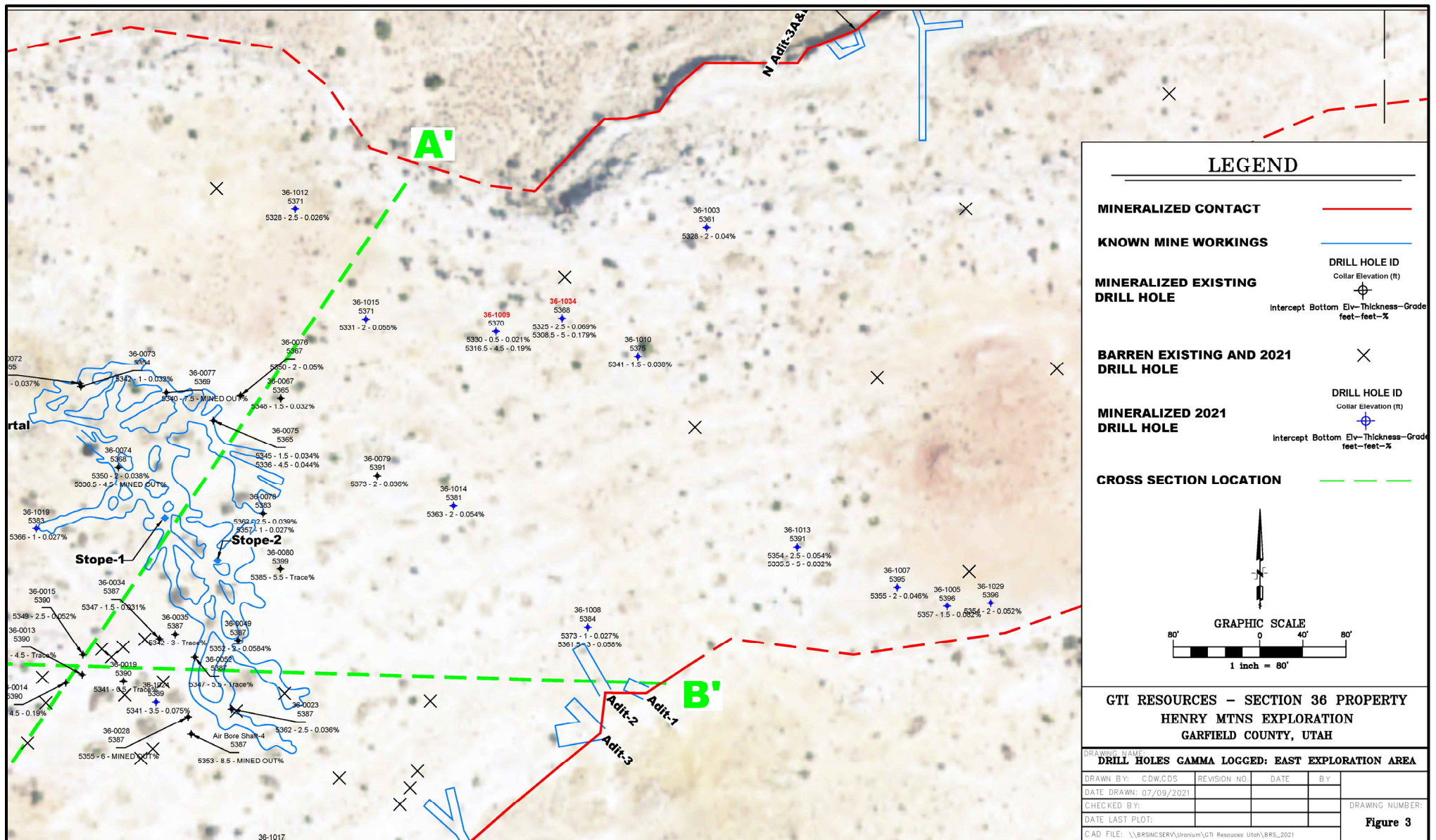


Figure 5. Section 36 Uranium Project, Henry Mountains Utah, Detailed Drill Hole Map

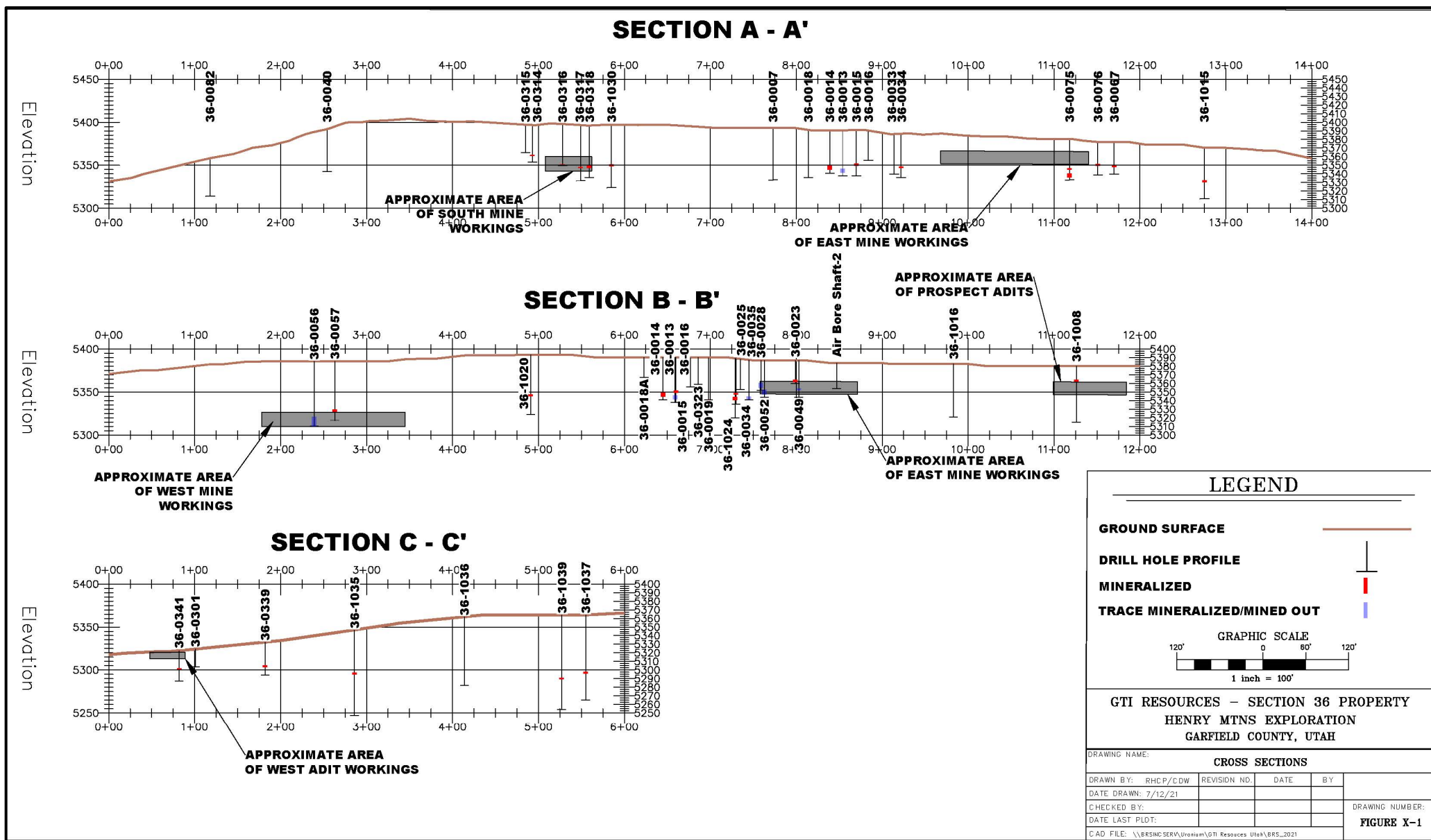


Figure 6. Section 36 Uranium Project, Henry Mountains Utah, Cross Sections



## NIAGARA (KOOKYNIE) GOLD PROJECT – WESTERN AUSTRALIA

The Niagara project is located ~6km southwest of Kookynie in the central goldfields of WA. The project comprises one granted exploration licence, E40/342, and six granted prospecting licences, P40/1506, P40/1513, P40/1515, P40/1516, P40/1517 and P40/1518. Access to the project is provided via Goldfields Highway from the town of Menzies and the sealed Kookynie Road which bisects the northern part of exploration licence E40/342 & the southern part of P40/1506 (Figure 1). The project is located within the central part of the Norseman-Wiluna greenstone belt and the geology of the area is characterised by large rafts of semi-continuous greenstone stratigraphy within the Mendleyarri monzogranite batholith.

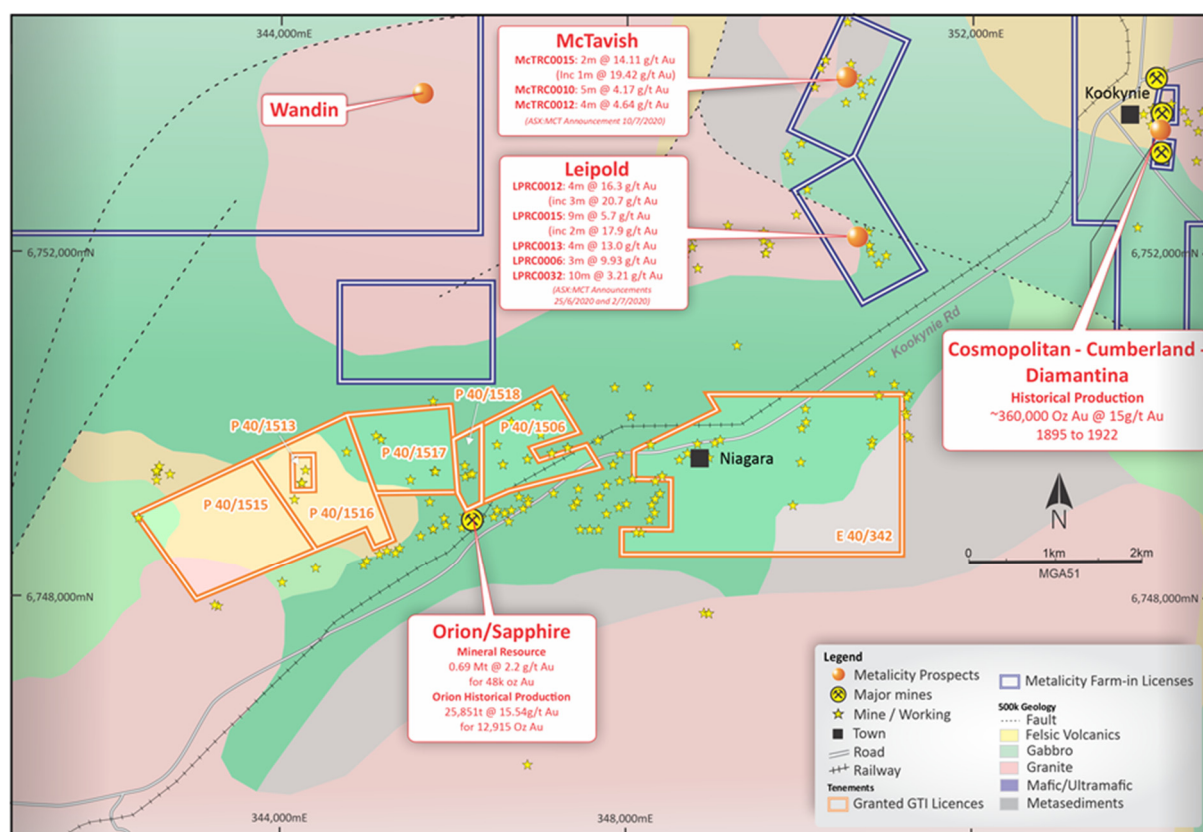


Figure 7. Niagara (Kookynie) Project – Licences & Mineral Occurrences on 1:500,000 Geology

### Niagara Project Drilling Results: E40/342

During the previous quarter GTI Resources Limited (**GTI** or the **Company**) received gold assays from the recently completed first pass shallow Reverse Circulation (RC) drilling program. A total of 2,376 metres (16 holes to average depth 148.5m) of RC drilling was carried out over the eastern part of E40/342 (Figure 8) and analysed for gold by ALS laboratories, together with an additional 228 QAQC (blanks, duplicates and standards) samples. The drilling program confirmed anomalous gold with downhole assay results up to 0.98 g/t Au (NGRC08 95-96 m), and 0.54 g/t Au intersected in NGRC01 (86-87m) below the previous result of 2.78 g/t Au (NGAC004 19-20m (Figure 9).

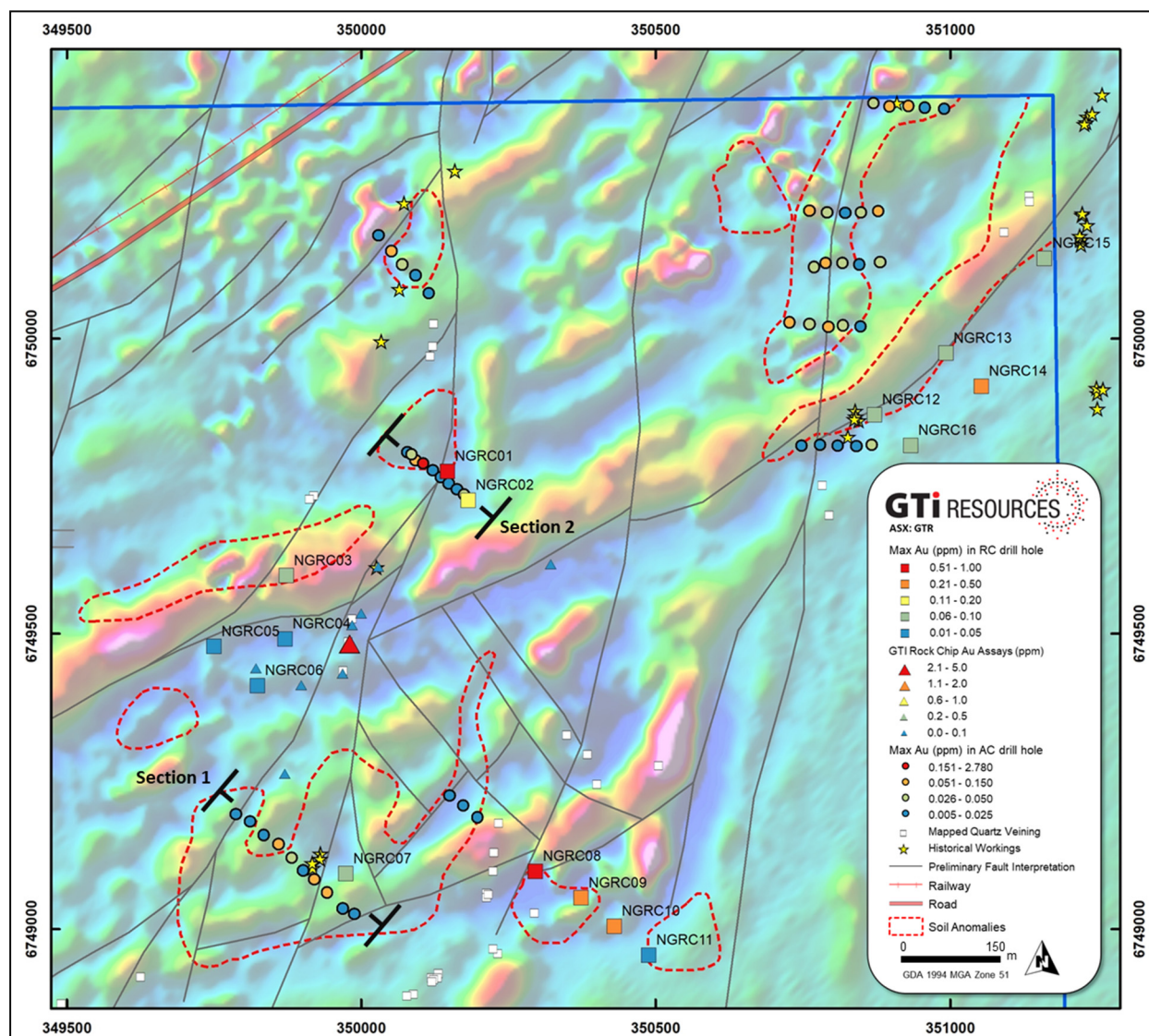


Figure 8. Niagara (Kookynie) Project – E40/342 – Completed RC Drillhole Collars with Maximum Gold Results; Previously Reported AC Drilling Collars (see GTR 29 October 2020 release) and Gold in Soil Anomalism

Drilling intersections with elevated gold assays were generally associated with logged intervals of quartz veining and the presence of pyrite in rock chips (NGRC001 85-88m and NGRC014 73-78m), and spatially associated with a significant NNE trending magnetic structures (Figures 8 and 9).

Correlation of downhole assay results, primarily below the base of complete oxidation (**BOCO**), with magnetic trends and surface features such as anomalous auger results and/or the location of historic workings, has provided for interpretation of the primary structural trends (Figure 3). The interpreted east-dipping, NNE-trending structures are consistent with similar structures regionally that host, for example, the Cosmopolitan, Altona and Champion Deposits.

Rock chip sampling of quartz veining along the NNE trend between drilling sections 1 and 2, yielded assay results with up to 2.4 g/t Au. These results further confirm the gold anomalism related to this trend and provide encouraging targets for follow-up exploration.



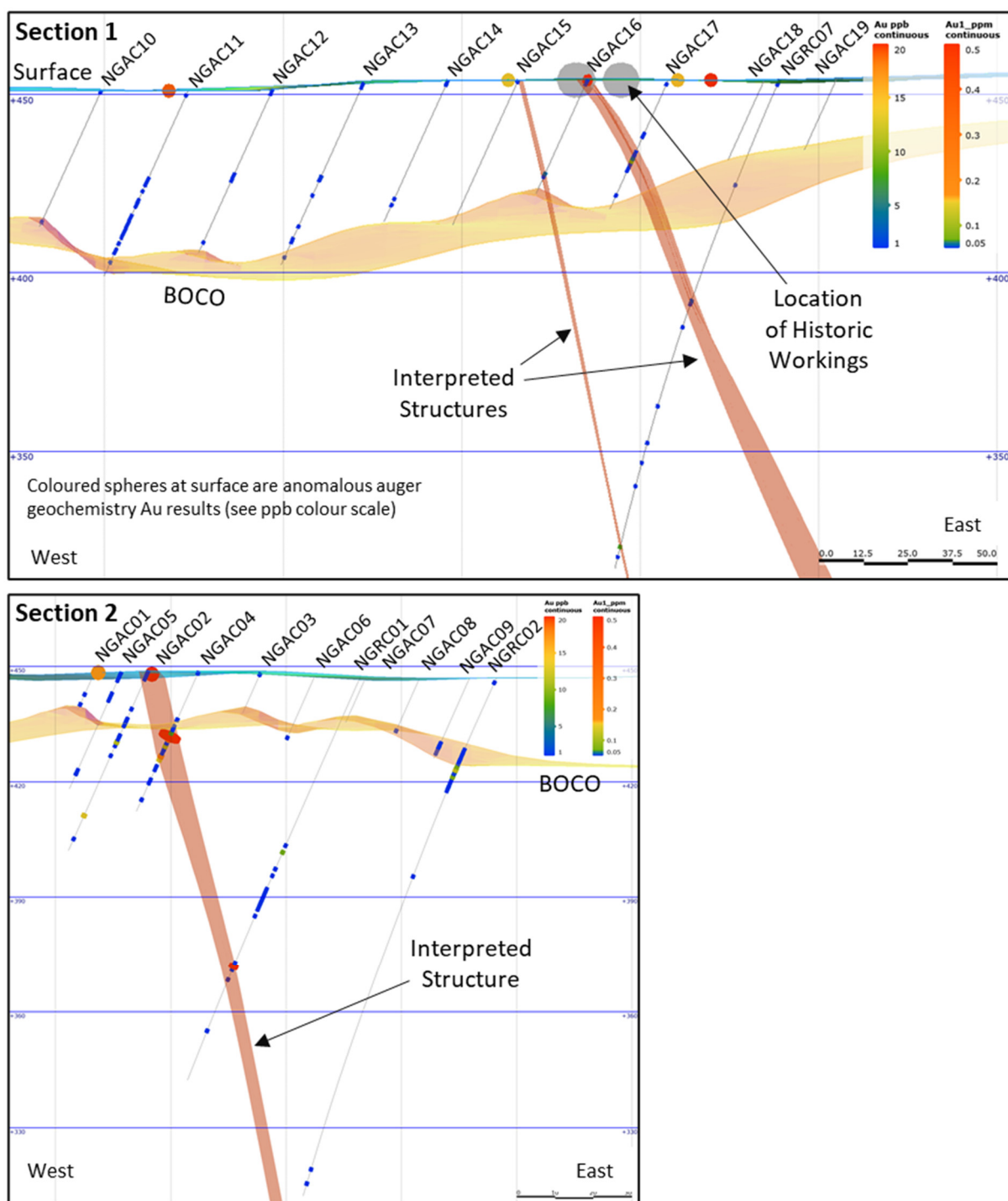


Figure 9. Niagara (Kookynie) Project – Oblique Drill Hole Cross-Sections Looking North (Section Locations Shown in Figure 1) with Downhole Gold Assay Results (0.01 g/t Au lower Cut-Off), Base of Weathering and Interpreted Primary Gold-Bearing Structures

## Western Niagara Project

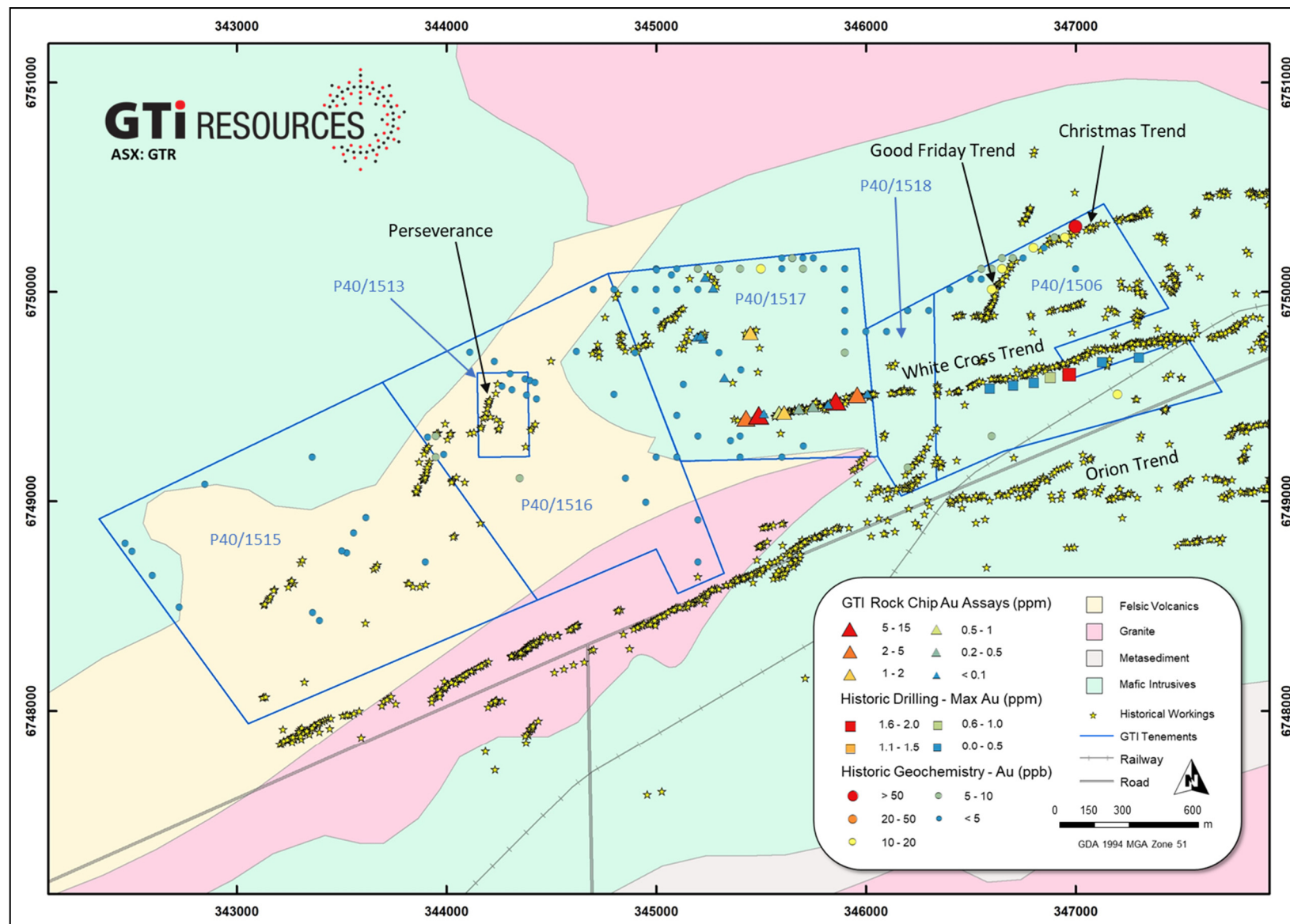


Figure 10. Niagara (Kookynie) Project – Compilation of Open-File Exploration Data Over New Prospecting Licences and Rock Chip Assay Results from Historic Workings Over 1:100,000 GSWA Interpreted Basement Geology.

## Western Niagara Project

A first-pass compilation of historic open-file WAMEX records indicate there has been little modern systematic exploration coverage of the western Niagara Project area covered by the newly granted Prospecting Licences (**Figure 10**). Compilation of open-file data will continue to extract additional information from older exploration and mining records in the licence areas where possible, prior to planning targeted exploration activity.

Initial rock chip sampling by CSA Global on P40/1517 associated with cuttings from historic workings along the western White Cross Trend yielded good assay results with quartz vein assays returned at **14.2 g/t, 6.1 g/t, 3.97 g/t and 3.95 g/t Au**). The open-file data compilation suggests mineralisation associated with these workings has not been sufficiently tested at depth and therefore represent a strong target for follow-up exploration.

## Historical Gold Production & Drilling Data of Exploration Leases

The Company has previously received an independent WAMEX compilation report, from CSA Global (**CSA**), assessing the historical gold production and exploration activity and potential prospectivity at the Company's newly granted prospecting licences, P40/1515, P40/1516, P40/1517 and P40/1506 and the recently acquired P40/1513 and P40/1518 (**Figure 11**). This contiguous land package over ~5km of mineralised trend now creates a significantly enlarged consolidated holding over extensive historic mine workings of the Niagara gold mining district.

The tenements incorporate the historic White Cross and Perseverance mining areas and smaller historic working trends including the Christmas and Good Friday trends. The Orion Trend extends ENE to the south of the tenements and hosts the historic Orion/Sapphire Mine.

The compilation report from CSA highlights the material past production and drilling which has occurred on the newly consolidated land package. The following are some highlights from CSA's independent compilation report:

- Historic workings in the tenement package targeted high-grade quartz veins & were largely operated from 1898-1914 with reported production of 6,800 tons at **25.8 g/t Au** for **5,100 oz Au** (source: Mount Edon Mines Pty Ltd, 1984).
- Significant intersections from historical drilling include (Table 2):
  - **May – White Cross:**
    - 2m at 70.5 g/t Au from 7m (RC38)
    - 2m at 15.4 g/t Au from 10m (RC315)
    - 2m at 11.3 g/t Au from 22m (RC391)
    - 2m at 10.7 g/t Au from 19m (RC327)
    - 5m at 9.7 g/t Au from 13m (RC25)
    - 2m at 8.2 g/t Au from 31m (RC309)
    - 1m at 7.3 g/t Au from 9m (DH20)
    - 2m at 6.0 g/t Au from 14m (RC57)
    - 3m at 4.9 g/t Au from 24m (RC317)
    - 5m at 4.5 g/t Au from 13m (RC27)
    - 3m at 3.9 g/t Au from 20m (RC42)
  - **York – Good Friday:** 4m at 3.2 g/t Au from 12m (DH34)
  - **Perseverance:** 6m at 1.5 g/t Au from 54m (BRC2)
  - **Green Bullet:** 3m at 15.7 g/t Au from 14m (RONW0058)



1m at 4.5 g/t Au from 16m (RONW0056)

1m at 4.0 g/t Au from 6m (RONW0043)

- Rock chip results from historical sampling include: 165 g/t Au (White Cliffs), 91.8 g/t Au (Green Bullet), 40 g/t Au (May – White Cross), 21 g/t Au (Iolanthe), 20 g/t Au (York – Good Friday), and 11 g/t Au (Perseverance) (refer **Figure 11**).
- Extensive historic workings and reported high-grade production in the east of the project area represent an advanced exploration play.
- The project contains **3** high priority advanced exploration target areas, **2** second priority intermediate exploration target areas and **3** earlier stage third priority exploration target areas.
- Historical drilling has targeted the historical workings at shallow levels with drilling typically 50m depth or shallower.
- An opportunity exists to extend the known mineralisation from historic workings to deeper levels and along strike with further drilling.
- The mineralised trends that represent high-priority, advanced exploration targets in the east of the project area are collectively up to 2.5 km in length, including 1.6 km of the White Cross trend from the May workings in the east to the Jarrahdale-Spinaway workings in the west, 400 m of the Good Friday trend, and 500m of the Christmas trend.
- The central and western project areas represent earlier-stage exploration targets with records of only limited but high-grade historic production.
- Historical exploration results from the earlier-stage exploration targets are encouraging with drilling intersections up to 3m at 15.7 g/t Au (Green Bullet) and rock chip sampling results up to 165 g/t Au (White Cliffs).

CSA Global (CSA) compiled the previous exploration data for GTI Resources' recently acquired Prospecting Licences as part of the Niagara Project. An initial compilation of digitally available WAMEX data was reported in GTI's 15 February ASX release, with only limited data available in the project area. Since this initial reporting, the search for historical exploration data was extended to include scanned hard-copy WAMEX documents.

Relevant exploration documents were downloaded from the WAMEX database for dead tenements that overlap and intersect the current Prospecting Licences. Maps were extracted from the documents and georeferenced using either the boundaries of dead tenements or the location of historical workings over satellite imagery, the latter being the preferred method. Locations of drill hole collars (226), rock chip (81) and soil-lag-auger sampling (1302) locations were digitised and attributed with Au assay information and relevant metadata.

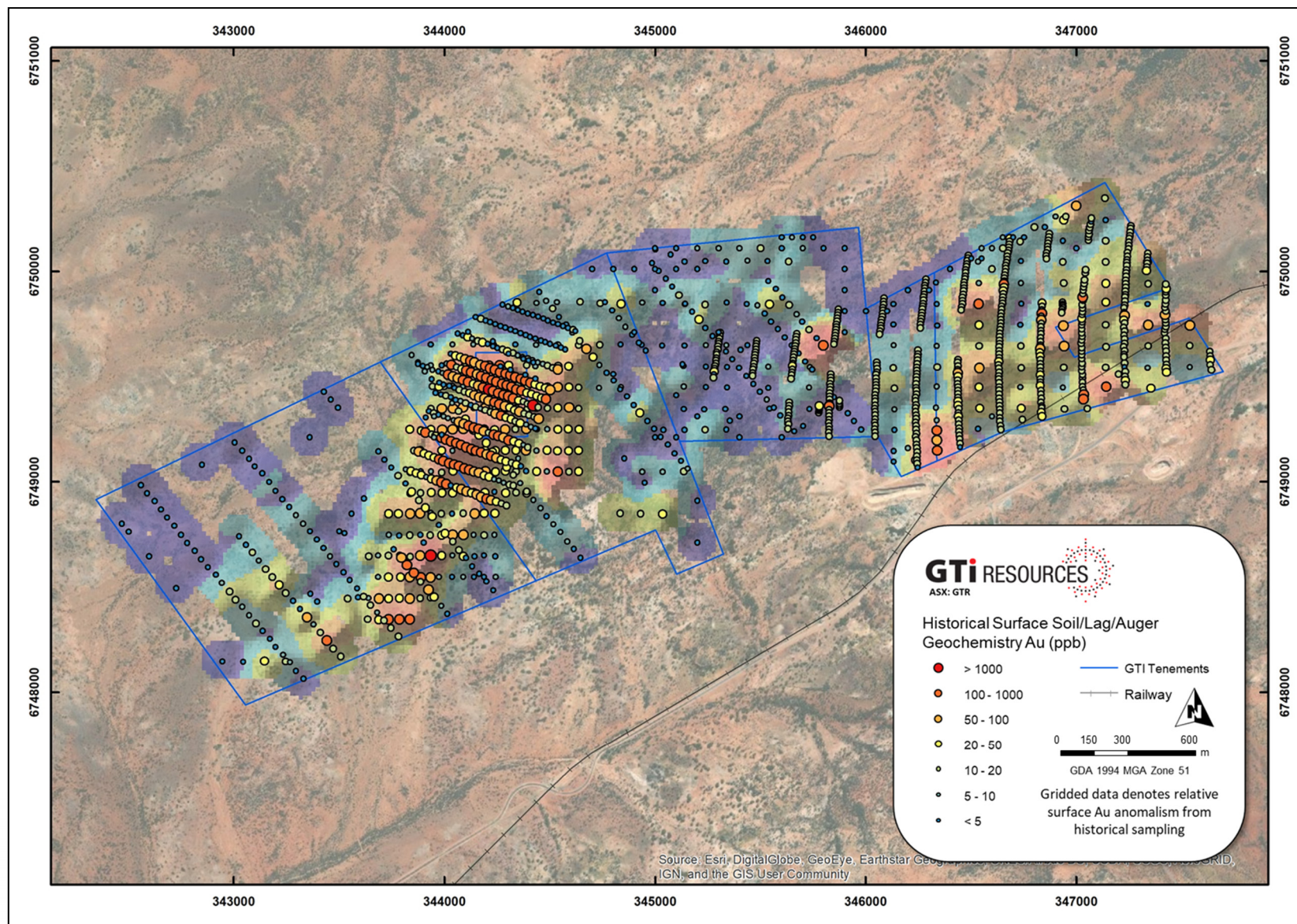


Figure 11. Compiled soil, lag and auger geochemistry data points over a levelled and gridded surface Au anomaly map. Note that Auger sampling from WAMEX Report A15119 in the eastern half of the project area is not including in the data levelling due to an anomalously high analytical lower detection limit.

**Table 2: Recorded gold production (derived from WAMEX Report A14010 - Mount Edon Mines Pty Ltd, 1984)**

<b>Name/Area</b>	<b>Tons Ore Treated*</b>	<b>Oz Gold Produced*</b>	<b>Grade Au g/t*</b>	<b>Years</b>
Christmas	167.5	86.78	17.8	1903-04
Eureka	571	515.13	30.9	1898-01
Good Friday	158	90.57	19.7	1899
York	459.5	284.21	21.2	1901-05
Coronation	15	12.57	28.7	1902
Iolanthe	25	13.86	19.0	1904
<b>Christmas/Good Friday</b>	<b>1,396</b>	<b>1,003.12</b>	<b>24.6</b>	
Kathleen	813	720.96	30.4	1902-06
White Cross	876.5	499.18	19.5	1903-09
May	2,837.25	2,337.15	28.2	1903-14
May	280	63.84	7.8	1940-41
Bonnie Scotland	20	9.43	16.2	1902
Jarrahdale	59	39.88	23.2	1903-04
<b>White Cross</b>	<b>4,885.75</b>	<b>3,670.44</b>	<b>25.8</b>	
Brooklet	79	95.76	41.6	1902-04
Great Toutini	18	7.88	15.0	1902
Lucky Hit	154.5	91.01	20.2	1903-05
White Cliffs	47.25	33.39	24.2	1898-1901
<b>White Cliffs</b>	<b>298.75</b>	<b>228.04</b>	<b>26.2</b>	
Two K's	107	126.42	40.5	1899-1902
Perseverance	93	74.11	27.3	1908-09
<b>Perseverance</b>	<b>200</b>	<b>200.53</b>	<b>34.4</b>	
<b>Total Project Area</b>	<b>6,780.5</b>	<b>5,102.13</b>	<b>25.8</b>	

\*Reported in "Tons Ore Treated" and "Gold Produced" taken as Kg; Au g/t calculated with Tons to Tonnes conversion

## Exploration Planning

The prospect areas have been divided into exploration targets at different stages and the Company is currently evaluating exploration programs and preparing a POW with the following focus:

### **1<sup>st</sup> Priority Advanced Targets:** *May-White Cross; York-Good Friday & Christmas*

The advanced target areas represent areas with generally good coverage by historical exploration, often with significant drilling intersections reported. Extensive workings and ground disturbance limits the effectiveness of any further surface exploration techniques. Historical drill hole collars should be ground-truthed where possible and previous drilling and assay results modelled prior to any additional drilling.

### **2<sup>nd</sup> Priority Intermediate-stage Targets:** *Jarrahdale-Spinaway; Perseverance*

Jarrahdale and Perseverance represent intermediate-stage exploration targets; both areas have recorded historical gold production but are less developed than the advanced targets. Transported cover and/or ground disturbance may limit the potential success of further surface exploration, however, this should be confirmed by reconnaissance. These prospects would benefit from reconnaissance mapping, and rock chip sampling of historical working and outcropping quartz veins to de-risk the area prior to targeted drilling. An extended magnetic survey should also be given consideration as Perseverance is not currently covered by this survey.

### **3<sup>rd</sup> Priority Early-stage Targets:** *Green Bullet; White Cliffs*

The Green Bullet and White Cliffs areas have limited or no recorded historical production but have yielded high-grade rock chips during previous exploration; Green Bullet is also supported by encouraging drilling and surface geochemical results. These areas would benefit from reconnaissance mapping and rock chip sampling, and auger sampling programs conditional on the



outcome of a regolith assessment. These areas are not covered by the GTI Resources magnetic survey and should be considered for extension of the survey area.

#### *Additional Exploration Potential*

Large areas of transported cover not appropriate for auger surveys (conditional on outcomes of regolith study e.g., Perseverance) may yield basement targets to test via AC or RC drilling if an extended magnetic survey is acquired.

## **CORPORATE**

### General Meeting

A General Meeting was held on 27 May 2021. All resolutions were carried on a poll.

### Lapse of Options

Subsequent to the quarter end on 1 July 2021 the Company advised that 50,000,000 unquoted options lapsed unexercised.

### Additional ASX Information

GTI provides the following information pursuant to ASX Listing Rule requirements:

1. ASX Listing Rule 5.3.1: Exploration & Evaluation Expenditure during the quarter was \$178,000. Full details of exploration activity during the March quarter are set out in this report.
2. ASX Listing Rule 5.3.2: There was no substantive mining production and development activities during the quarter.
3. ASX Listing Rule 5.3.5: Payment to related parties of the Company and their associates during the quarter: \$76,000 cash. The Company advises that this relates to remuneration of Directors only. Please see the Remuneration Report in the Annual Report for further details on Directors' Remuneration.

## **The Board of Directors of GTI Resources Ltd authorised this announcement to be given to ASX**

Bruce Lane - Executive Director, Ph: +61 (0) 8 9226 2011, e: [info@gtiresources.com.au](mailto:info@gtiresources.com.au)

**-Ends-**

### **Competent Person Statements:**

*The information in this announcement that relates to the Exploration Results on the Henry Mountains project is based on information compiled and fairly represented by SRK Consulting. Doug Beahm has reviewed the information compiled by SRK and has approved the scientific and technical matters of this disclosure. Mr. Beahm is a Principal Engineer with BRS Engineering Inc. with over 45 years of experience in mineral exploration and project evaluation. Mr. Beahm is a Registered Member of the Society of Mining, Metallurgy and Exploration, and is a Professional Engineer (Wyoming, Utah, and Oregon) and a Professional Geologist (Wyoming). Mr Beahm has worked in uranium exploration, mining, and mine land reclamation in the Western US since 1975 and has sufficient experience relevant to the style of mineralisation and type of deposit under consideration and has reviewed the activity which has been undertaken in 2019 and 2020, to qualify as a Competent Person as defined in the 2012 Edition of the Joint Ore Reserves Committee (JORC) Australasian Code for Reporting of exploration results, Mineral Resources and Ore Reserves. Mr Beahm provides his consent to the information provided relative to the planned Section 36 exploration programme herein.*

*Information in this release that relates to Exploration Results on the Western Australian projects is based on information compiled by Mr Andrew Rust, who is a Member of the Australian Institute of Mining and Metallurgy (AusIMM). Mr Rust is a full-time employee of Shearwater Australia Proprietary Limited. Mr Rust is engaged by GTI Resources Limited as an independent consultant. Mr Rust has sufficient experience which is relevant to the style of mineralisation and type of deposit under consideration and to the activity being undertaken to qualify as a Competent Person as defined in the 2012 Edition of the 'Australasian Code for Reporting of Exploration Results, Mineral Resources and Ore Reserves'. Mr Rust consents to the inclusion in this release of the matters based on his information in the form and context in which it appears.*

# Tenement Schedule

Tenements held as at 30 June 2021

## Western Australia

PROJECT	TENEMENT	HOLDER/APPLICANT	CHANGES DURING THE QUARTER	INTEREST AT END OF QUARTER
NIAGARA (KOOKYNIE)	E40/342	GTI Resources Ltd	-	100%
NIAGARA (KOOKYNIE)	P40/1518	GTI Resources Ltd	-	100%
NIAGARA (KOOKYNIE)	P40/1513	GTI Resources Ltd	-	100%
NIAGARA (KOOKYNIE)	P40/1492	GTI Resources Ltd	-	100%
NIAGARA (KOOKYNIE)	P40/1506	GTI Resources Ltd	-	100%
NIAGARA (KOOKYNIE)	PA0/1515	GTI Resources Ltd	-	100%
NIAGARA (KOOKYNIE)	PA0/1516	GTI Resources Ltd	-	100%
NIAGARA (KOOKYNIE)	P40/1517	GTI Resources Ltd	-	100%

## Key to Tenement Schedule

- E - Exploration Licence
- ELA - Exploration Licence Application
- P - Prospecting Licence
- PLA - Prospecting Licence Application

## Utah (USA)

Serial Number	Type	Claim Name	Claim Status	Holder	Interest Acquired/Disposed During Quarter	Shares Held
UMC444089	LODE	WOODRUFF # 1	Claim Perfected at BLM	Voyager Energy LLC	-	100%
UMC444090	LODE	WOODRUFF # 2	Claim Perfected at BLM	Voyager Energy LLC	-	100%
UMC444091	LODE	WOODRUFF # 3	Claim Perfected at BLM	Voyager Energy LLC	-	100%
UMC444092	LODE	WOODRUFF # 4	Claim Perfected at BLM	Voyager Energy LLC	-	100%
UMC444093	LODE	WOODRUFF # 5	Claim Perfected at BLM	Voyager Energy LLC	-	100%
UMC444094	LODE	WOODRUFF # 6	Claim Perfected at BLM	Voyager Energy LLC	-	100%
UMC444095	LODE	WOODRUFF # 7	Claim Perfected at BLM	Voyager Energy LLC	-	100%
UMC444096	LODE	WOODRUFF # 8	Claim Perfected at BLM	Voyager Energy LLC	-	100%
UMC444097	LODE	WOODRUFF # 9 FRAC	Claim Perfected at BLM	Voyager Energy LLC	-	100%
UMC444098	LODE	WOODRUFF # 10 FRAC	Claim Perfected at BLM	Voyager Energy LLC	-	100%
UMC444099	LODE	WOODRUFF # 11	Claim Perfected at BLM	Voyager Energy LLC	-	100%
UMC444100	LODE	WOODRUFF # 12	Claim Perfected at BLM	Voyager Energy LLC	-	100%
UMC444101	LODE	WOODRUFF # 13	Claim Perfected at BLM	Voyager Energy LLC	-	100%
UMC444102	LODE	WOODRUFF # 14	Claim Perfected at BLM	Voyager Energy LLC	-	100%
UMC444103	LODE	WOODRUFF # 15	Claim Perfected at BLM	Voyager Energy LLC	-	100%
UMC444104	LODE	WOODRUFF # 16	Claim Perfected at BLM	Voyager Energy LLC	-	100%
UMC444105	LODE	WOODRUFF # 17	Claim Perfected at BLM	Voyager Energy LLC	-	100%
UMC444106	LODE	WOODRUFF # 18	Claim Perfected at BLM	Voyager Energy LLC	-	100%
UMC444126	LODE	MOKI # 20	Claim Perfected at BLM	Voyager Energy LLC	-	100%
UMC444127	LODE	MOKI # 21	Claim Perfected at BLM	Voyager Energy LLC	-	100%
UMC444128	LODE	MOKI # 22	Claim Perfected at BLM	Voyager Energy LLC	-	100%
UMC444129	LODE	MOKI # 23	Claim Perfected at BLM	Voyager Energy LLC	-	100%
UMC444130	LODE	MOKI # 24	Claim Perfected at BLM	Voyager Energy LLC	-	100%
UMC444147	LODE	JAKE # 17	Claim Perfected at BLM	Voyager Energy LLC	-	100%
UMC444148	LODE	JAKE # 18	Claim Perfected at BLM	Voyager Energy LLC	-	100%
UMC444149	LODE	JAKE # 19	Claim Perfected at BLM	Voyager Energy LLC	-	100%



Serial Number	Type	Claim Name	Claim Status	Holder	Interest Acquired/Disposed During Quarter	Shares Held
UMC444150	LODE	JAKE # 20	Claim Perfected at BLM	Voyager Energy LLC	-	100%
UMC444151	LODE	JAKE # 21	Claim Perfected at BLM	Voyager Energy LLC	-	100%
UMC444152	LODE	JAKE # 22	Claim Perfected at BLM	Voyager Energy LLC	-	100%
UMC444153	LODE	JAKE # 23	Claim Perfected at BLM	Voyager Energy LLC	-	100%
UMC444154	LODE	JAKE # 24	Claim Perfected at BLM	Voyager Energy LLC	-	100%
UMC444155	LODE	JAKE # 25	Claim Perfected at BLM	Voyager Energy LLC	-	100%
UMC444156	LODE	JAKE # 26	Claim Perfected at BLM	Voyager Energy LLC	-	100%
UMC444157	LODE	JAKE # 27	Claim Perfected at BLM	Voyager Energy LLC	-	100%
UMC444158	LODE	JAKE # 28	Claim Perfected at BLM	Voyager Energy LLC	-	100%
UMC444159	LODE	JAKE # 29	Claim Perfected at BLM	Voyager Energy LLC	-	100%
UMC444160	LODE	JAKE # 30	Claim Perfected at BLM	Voyager Energy LLC	-	100%
UMC444161	LODE	JAKE # 31	Claim Perfected at BLM	Voyager Energy LLC	-	100%
UMC444162	LODE	JAKE # 32	Claim Perfected at BLM	Voyager Energy LLC	-	100%
UMC444195	LODE	JEFFREY # 1	Claim Perfected at BLM	Voyager Energy LLC	-	100%
UMC444196	LODE	JEFFREY # 2	Claim Perfected at BLM	Voyager Energy LLC	-	100%
UMC444197	LODE	JEFFREY # 3	Claim Perfected at BLM	Voyager Energy LLC	-	100%
UMC444198	LODE	JEFFREY # 4	Claim Perfected at BLM	Voyager Energy LLC	-	100%
UMC444199	LODE	JEFFREY # 5	Claim Perfected at BLM	Voyager Energy LLC	-	100%
UMC444200	LODE	JEFFREY # 6	Claim Perfected at BLM	Voyager Energy LLC	-	100%
UMC444201	LODE	JEFFREY # 7	Claim Perfected at BLM	Voyager Energy LLC	-	100%
UMC444202	LODE	JEFFREY # 8	Claim Perfected at BLM	Voyager Energy LLC	-	100%
UMC444203	LODE	JEFFREY # 9	Claim Perfected at BLM	Voyager Energy LLC	-	100%
UMC444204	LODE	JEFFREY # 10	Claim Perfected at BLM	Voyager Energy LLC	-	100%
UMC444205	LODE	JEFFREY # 11	Claim Perfected at BLM	Voyager Energy LLC	-	100%
UMC444206	LODE	JEFFREY # 12	Claim Perfected at BLM	Voyager Energy LLC	-	100%
UMC444207	LODE	JEFFREY # 13	Claim Perfected at BLM	Voyager Energy LLC	-	100%
UMC444208	LODE	JEFFREY # 14	Claim Perfected at BLM	Voyager Energy LLC	-	100%
UMC444209	LODE	JEFFREY # 15	Claim Perfected at BLM	Voyager Energy LLC	-	100%
UMC444210	LODE	JEFFREY # 16	Claim Perfected at BLM	Voyager Energy LLC	-	100%
UMC444211	LODE	JEFFREY # 17 FRAC	Claim Perfected at BLM	Voyager Energy LLC	-	100%
UMC444212	LODE	JEFFREY # 18	Claim Perfected at BLM	Voyager Energy LLC	-	100%
UMC444213	LODE	JEFFREY # 19	Claim Perfected at BLM	Voyager Energy LLC	-	100%
UMC444214	LODE	POINT # 1	Claim Perfected at BLM	Voyager Energy LLC	-	100%
UMC444215	LODE	POINT # 2	Claim Perfected at BLM	Voyager Energy LLC	-	100%
UMC444216	LODE	POINT # 3	Claim Perfected at BLM	Voyager Energy LLC	-	100%
UMC444217	LODE	POINT # 4	Claim Perfected at BLM	Voyager Energy LLC	-	100%
UMC444218	LODE	POINT # 5	Claim Perfected at BLM	Voyager Energy LLC	-	100%
UMC444221	LODE	POINT # 8	Claim Perfected at BLM	Voyager Energy LLC	-	100%
UMC444222	LODE	POINT # 9	Claim Perfected at BLM	Voyager Energy LLC	-	100%
UMC444223	LODE	POINT # 10	Claim Perfected at BLM	Voyager Energy LLC	-	100%
UMC444224	LODE	POINT # 11	Claim Perfected at BLM	Voyager Energy LLC	-	100%
UMC444225	LODE	POINT # 12	Claim Perfected at BLM	Voyager Energy LLC	-	100%
UMC444226	LODE	POINT # 13	Claim Perfected at BLM	Voyager Energy LLC	-	100%
UMC444227	LODE	POINT # 14	Claim Perfected at BLM	Voyager Energy LLC	-	100%
UMC444229	LODE	POINT # 16	Claim Perfected at BLM	Voyager Energy LLC	-	100%
UMC444231	LODE	POINT # 18	Claim Perfected at BLM	Voyager Energy LLC	-	100%
UMC444232	LODE	POINT # 19	Claim Perfected at BLM	Voyager Energy LLC	-	100%
UMC444233	LODE	POINT # 20	Claim Perfected at BLM	Voyager Energy LLC	-	100%
UMC444235	LODE	RAT NEST # 2	Claim Perfected at BLM	Voyager Energy LLC	-	100%
UMC444236	LODE	RAT NEST # 3	Claim Perfected at BLM	Voyager Energy LLC	-	100%
UMC444237	LODE	RAT NEST # 4	Claim Perfected at BLM	Voyager Energy LLC	-	100%
UMC444238	LODE	RAT NEST # 5	Claim Perfected at BLM	Voyager Energy LLC	-	100%
UMC444239	LODE	RAT NEST # 6	Claim Perfected at BLM	Voyager Energy LLC	-	100%
UMC444240	LODE	RAT NEST # 7	Claim Perfected at BLM	Voyager Energy LLC	-	100%
UMC444241	LODE	RAT NEST # 8	Claim Perfected at BLM	Voyager Energy LLC	-	100%
UMC444242	LODE	RAT NEST # 9	Claim Perfected at BLM	Voyager Energy LLC	-	100%
UMC444243	LODE	PINTO # 1	Claim Perfected at BLM	Voyager Energy LLC	-	100%
UMC444244	LODE	PINTO # 2	Claim Perfected at BLM	Voyager Energy LLC	-	100%

Serial Number	Type	Claim Name	Claim Status	Holder	Interest Acquired/Disposed During Quarter	Shares Held
UMC444245	LODE	PINTO # 4	Claim Perfected at BLM	Voyager Energy LLC	-	100%
UMC444246	LODE	PINTO # 3	Claim Perfected at BLM	Voyager Energy LLC	-	100%
UMC444247	LODE	PINTO # 5	Claim Perfected at BLM	Voyager Energy LLC	-	100%
UMC444248	LODE	PINTO # 6	Claim Perfected at BLM	Voyager Energy LLC	-	100%
UMC444249	LODE	PINTO # 7	Claim Perfected at BLM	Voyager Energy LLC	-	100%
UMC444250	LODE	PINTO # 8	Claim Perfected at BLM	Voyager Energy LLC	-	100%
UMC444251	LODE	PINTO # 9	Claim Perfected at BLM	Voyager Energy LLC	-	100%
UMC444252	LODE	PINTO # 10	Claim Perfected at BLM	Voyager Energy LLC	-	100%
UMC444253	LODE	PINTO # 11	Claim Perfected at BLM	Voyager Energy LLC	-	100%
UMC444254	LODE	PINTO # 12	Claim Perfected at BLM	Voyager Energy LLC	-	100%
UMC444255	LODE	PINTO # 13	Claim Perfected at BLM	Voyager Energy LLC	-	100%
UMC444256	LODE	PINTO # 14	Claim Perfected at BLM	Voyager Energy LLC	-	100%
UMC444257	LODE	PINTO # 15	Claim Perfected at BLM	Voyager Energy LLC	-	100%
UMC444259	LODE	PINTO # 17	Claim Perfected at BLM	Voyager Energy LLC	-	100%
UMC444260	LODE	PINTO # 18	Claim Perfected at BLM	Voyager Energy LLC	-	100%
UMC444261	LODE	PINTO # 19	Claim Perfected at BLM	Voyager Energy LLC	-	100%
UMC444264	LODE	PINTO # 22	Claim Perfected at BLM	Voyager Energy LLC	-	100%
UMC444265	LODE	PINTO # 23	Claim Perfected at BLM	Voyager Energy LLC	-	100%
UMC444266	LODE	PINTO # 24	Claim Perfected at BLM	Voyager Energy LLC	-	100%
UMC444267	LODE	PINTO # 25	Claim Perfected at BLM	Voyager Energy LLC	-	100%
UMC445317	LODE	MOKI # 1	Claim Perfected at BLM	Voyager Energy LLC	-	100%
UMC445318	LODE	MOKI # 2	Claim Perfected at BLM	Voyager Energy LLC	-	100%
UMC445319	LODE	MOKI # 3	Claim Perfected at BLM	Voyager Energy LLC	-	100%
UMC445320	LODE	MOKI # 4	Claim Perfected at BLM	Voyager Energy LLC	-	100%
UMC445321	LODE	MOKI # 5	Claim Perfected at BLM	Voyager Energy LLC	-	100%
UMC445322	LODE	MOKI # 6	Claim Perfected at BLM	Voyager Energy LLC	-	100%
UMC445323	LODE	MOKI # 7	Claim Perfected at BLM	Voyager Energy LLC	-	100%
UMC445324	LODE	MOKI # 8	Claim Perfected at BLM	Voyager Energy LLC	-	100%
UMC445325	LODE	MOKI # 9	Claim Perfected at BLM	Voyager Energy LLC	-	100%
UMC445326	LODE	MOKI # 10	Claim Perfected at BLM	Voyager Energy LLC	-	100%
UMC445327	LODE	MOKI # 11	Claim Perfected at BLM	Voyager Energy LLC	-	100%
UMC445328	LODE	MOKI # 12	Claim Perfected at BLM	Voyager Energy LLC	-	100%
UMC445329	LODE	MOKI # 13	Claim Perfected at BLM	Voyager Energy LLC	-	100%
UMC445330	LODE	MOKI # 14	Claim Perfected at BLM	Voyager Energy LLC	-	100%
UMC445331	LODE	MOKI # 15	Claim Perfected at BLM	Voyager Energy LLC	-	100%
UMC445332	LODE	MOKI # 16	Claim Perfected at BLM	Voyager Energy LLC	-	100%
UMC445333	LODE	MOKI # 17	Claim Perfected at BLM	Voyager Energy LLC	-	100%
UMC445334	LODE	MOKI # 18	Claim Perfected at BLM	Voyager Energy LLC	-	100%
UMC445335	LODE	MOKI # 19	Claim Perfected at BLM	Voyager Energy LLC	-	100%
UMC445341	LODE	JAKE # 1	Claim Perfected at BLM	Voyager Energy LLC	-	100%
UMC445342	LODE	JAKE # 2	Claim Perfected at BLM	Voyager Energy LLC	-	100%
UMC445343	LODE	JAKE # 3	Claim Perfected at BLM	Voyager Energy LLC	-	100%
UMC445344	LODE	JAKE # 4	Claim Perfected at BLM	Voyager Energy LLC	-	100%
UMC445345	LODE	JAKE # 5	Claim Perfected at BLM	Voyager Energy LLC	-	100%
UMC445346	LODE	JAKE # 6	Claim Perfected at BLM	Voyager Energy LLC	-	100%
UMC445347	LODE	JAKE # 7	Claim Perfected at BLM	Voyager Energy LLC	-	100%
UMC445348	LODE	JAKE # 8	Claim Perfected at BLM	Voyager Energy LLC	-	100%
UMC445349	LODE	JAKE # 9	Claim Perfected at BLM	Voyager Energy LLC	-	100%
UMC445350	LODE	JAKE # 10	Claim Perfected at BLM	Voyager Energy LLC	-	100%
UMC445351	LODE	JAKE # 11	Claim Perfected at BLM	Voyager Energy LLC	-	100%
UMC445352	LODE	JAKE # 12	Claim Perfected at BLM	Voyager Energy LLC	-	100%
UMC445353	LODE	JAKE # 13	Claim Perfected at BLM	Voyager Energy LLC	-	100%
UMC445354	LODE	JAKE # 14	Claim Perfected at BLM	Voyager Energy LLC	-	100%
UMC445355	LODE	JAKE # 15	Claim Perfected at BLM	Voyager Energy LLC	-	100%
UMC445356	LODE	JAKE # 16	Claim Perfected at BLM	Voyager Energy LLC	-	100%
UMC445357	LODE	JEFFREY # 20	Claim Perfected at BLM	Voyager Energy LLC	-	100%
UMC445358	LODE	JEFFREY # 21	Claim Perfected at BLM	Voyager Energy LLC	-	100%
UMC445359	LODE	JEFFREY # 22	Claim Perfected at BLM	Voyager Energy LLC	-	100%

Serial Number	Type	Claim Name	Claim Status	Holder	Interest Acquired/Disposed During Quarter	Shares Held
UMC445360	LODE	JEFFREY # 23	Claim Perfected at BLM	Voyager Energy LLC	-	100%
UMC445361	LODE	JEFFREY # 24	Claim Perfected at BLM	Voyager Energy LLC	-	100%
UMC445362	LODE	JEFFREY # 25	Claim Perfected at BLM	Voyager Energy LLC	-	100%
UMC445363	LODE	JEFFREY # 26	Claim Perfected at BLM	Voyager Energy LLC	-	100%
UMC445364	LODE	JEFFREY # 27	Claim Perfected at BLM	Voyager Energy LLC	-	100%
UMC445365	LODE	JEFFREY # 28	Claim Perfected at BLM	Voyager Energy LLC	-	100%
UMC445366	LODE	PINTO # 16	Claim Perfected at BLM	Voyager Energy LLC	-	100%
UMC445367	LODE	PINTO # 20	Claim Perfected at BLM	Voyager Energy LLC	-	100%
UMC445368	LODE	PINTO # 21	Claim Perfected at BLM	Voyager Energy LLC	-	100%
UMC445369	LODE	POINT # 6	Claim Perfected at BLM	Voyager Energy LLC	-	100%
UMC445370	LODE	POINT # 7	Claim Perfected at BLM	Voyager Energy LLC	-	100%
UMC445371	LODE	POINT # 15	Claim Perfected at BLM	Voyager Energy LLC	-	100%
UMC445372	LODE	POINT # 17	Claim Perfected at BLM	Voyager Energy LLC	-	100%
UMC445373	LODE	RAT NEST # 1	Claim Perfected at BLM	Voyager Energy LLC	-	100%
UMC445374	LODE	RAT NEST # 10	Claim Perfected at BLM	Voyager Energy LLC	-	100%
UMC445375	LODE	RAT NEST # 11	Claim Perfected at BLM	Voyager Energy LLC	-	100%
UMC445376	LODE	RAT NEST # 12	Claim Perfected at BLM	Voyager Energy LLC	-	100%
UMC445377	LODE	RAT NEST # 13	Claim Perfected at BLM	Voyager Energy LLC	-	100%
UMC445378	LODE	RAT NEST # 14	Claim Perfected at BLM	Voyager Energy LLC	-	100%

Number	Type	Claim Name	Claim Status	Holder/Applicant	Interest at Beginning of Quarter	Interest Acquired/Disposed during the Quarter	% Held*
ML 53599	School Section	Section 36 T31S R11E	Lease - Claim Perfected at BLM/SITLA	Voyager Energy LLC	100%	-	100%
ML 52627	School Section	Section 2 T32S R11E	Lease - Claim Perfected at BLM/SITLA	Voyager Energy LLC	100%	-	100%

\* Subject to payment, as per the terms of the acquisition agreement, of US\$100,000 and 2,000,000 GTI shares by 11<sup>th</sup> November 2021