



Advancing the Major Earraheedy Zinc-Lead-Silver Discovery

Diggers n Dealers Mining Forum - 2nd to 5th August 2021

Pipeline of Projects Strategy

Delivers Earraheedy Zinc-Lead-Silver Discovery



Strategic pipeline of projects	<ul style="list-style-type: none"> Clear strategy to generate and drill test a pipeline of projects that are critically reviewed against stringent criteria, providing multiple avenues to world class discoveries Rumble and JV partners are currently advancing a portfolio of 7 projects in Tier 1 Regions across Western Australia
Experienced management team and board	<ul style="list-style-type: none"> Led by Managing Director Shane Sikora, +15 years company management and corporate experience Technical Director Brett Keillor awarded AMEC 'Prospector of the Year' twice for Tropicana and Plutonic discoveries Recent board and management additions have significantly bolstered discovery and development expertise
Focussed on Rapidly Advancing a major discovery at Earraheedy	<ul style="list-style-type: none"> Major Zinc-Lead-Silver discovery made at Chinook prospect, 110km north of Wiluna 30,000m RC and Diamond follow-up drill program has commenced Results from first 4 holes have extended mineralisation footprint by 125% to 3km x by 1.8km, with mineralisation open in all directions Increased exploration target* to 100-120Mt (3.5% - 4.5% Zn-Pb) Focus for 2H 2021 is scoping the extent of mineralisation before targeting near surface inferred high-grade feeder structures
Fully funded	<ul style="list-style-type: none"> Cash of ~\$40 million (as at 30 June 21) and no debt Fully funded through expansive 2021 drilling program and all other exploration activities
Near term catalysts	<ul style="list-style-type: none"> Ongoing drilling results at Earraheedy – 2H 2021 Maiden gold resources at Western Queen - 2H 2021 Drilling at Braeside, Munarra Gully, Lamil and exploration at Fraser Range – 2H 2021



* Refer page [15] for further details on the Exploration Target. Rumble's Zn-Pb exploration target at the Earraheedy Project is between 100 to 120 million tonnes at a grade ranging between 3.5% Zn-Pb to 4.5% Zn-Pb. The potential quantity and grade of the Exploration Target is conceptual in nature. There has been insufficient exploration to estimate a Mineral Resource and it is uncertain if further exploration will result in the estimation of a Mineral Resource

Corporate Overview



Capital Structure (ASX:RTR)

Shares On Issue	(m)	620.1
Unlisted Options ^{1,2}	(m)	20.9
Market Capitalisation ³	(A\$m)	292
Cash (30 June 2021)	(A\$m)	~39
Debt	(A\$m)	Nil

1. 5.9mil 15c Options (Various Expiry)

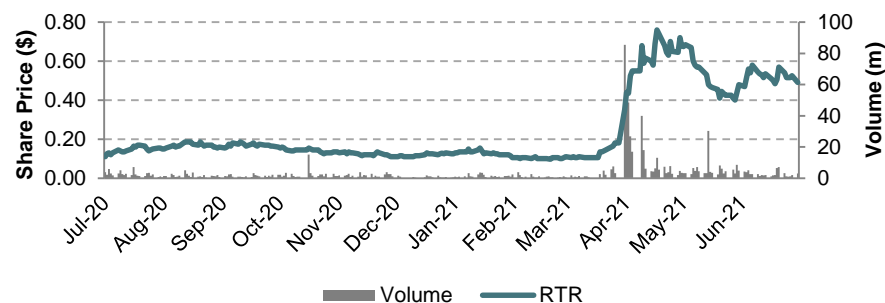
2. 15mil Performance Options Vesting 20c, 30c, 40c, 50c, \$1 & \$2

3. As at [22 July 2021]

Shareholders

Board and Management	8.9%
Top 20	32%

Share Price Performance³



Board and Management

Shane Sikora	Managing Director
Brett Keillor	Technical Director
Matthew Banks	Non-Executive Director
Michael Smith	Non-Executive Director
Peter Venn	Non-Executive Director
Steven Wood	Company Secretary

Experienced Board and Management



Board

Shane Sikora, Managing Director

- Founding member of Rumble.
- Appointed Managing Director in 2015.
- Over 15 years corporate experience in business development, strategic planning and project management.

Brett Keillor, Technical Director

- Geologist with over 30 years' experience in the mining industry.
- Worked with Resolute Mining Ltd, recently Chief Geologist (Gold) for Independence Group NL.
- Twice recipient of the AMEC Award "Prospector Of The Year" for the Marymia and Tropicana discoveries.

Matthew Banks Non-Executive Director

- Approximately 10 years specialising in marketing, public relations and corporate finance.
- Executive director of Wildcat Resources (ASX: WC8).

Michael Smith Non-Executive Director

- Chartered Accountant with over 25 years experience.
- Fellow of the Taxation Institute of Australia, member of ICAA's Forensic Accounting Special Interest Group.
- Previously Chief Executive of a division of a publicly listed national financial services consolidator.

Peter Venn Non-Executive Director

- Geologist with more than 30 years experience.
- Developed and lead teams to develop +10 mining operations across Africa and Australia.
- Previously Managing Director of Margosa Graphite Limited and Chief BD Officer at Resolute Mining Limited.

Senior Management

Steven Wood Company Secretary / CFO

- Over 10 years' experience in corporate advisory, company secretarial and financial management Chartered Accountant, with experience in providing company secretarial and financial management services to both ASX and unlisted public and private companies.

Mark Carder GM Operations

- Geologist with over 19 years' experience in mining a broad range of commodities.
- Held senior geological roles with Crescent Gold, BC Iron, Carrick Gold, Millennium Minerals and Lynas Corporation.
- Specialises in resource modelling and economic assessment.

Ben Jones Consultant Geologist

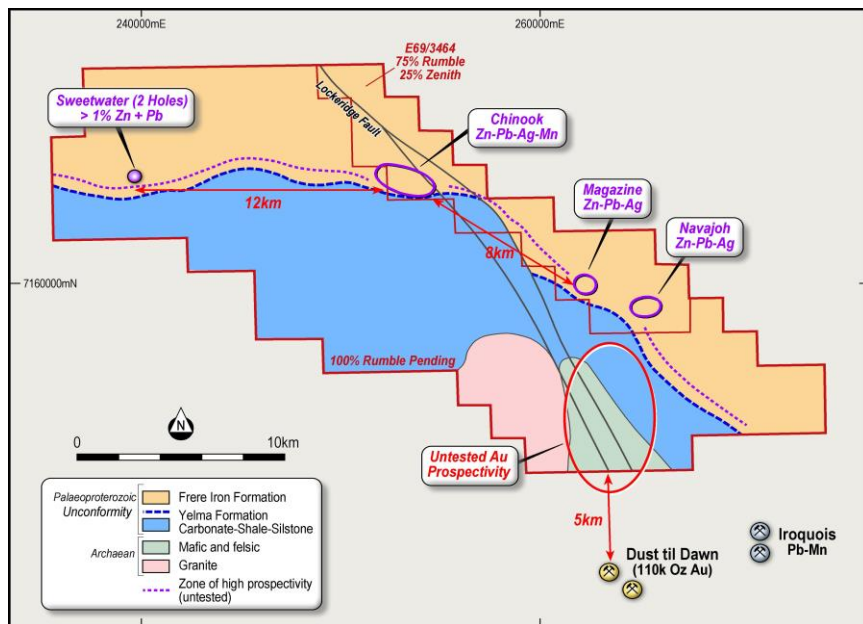
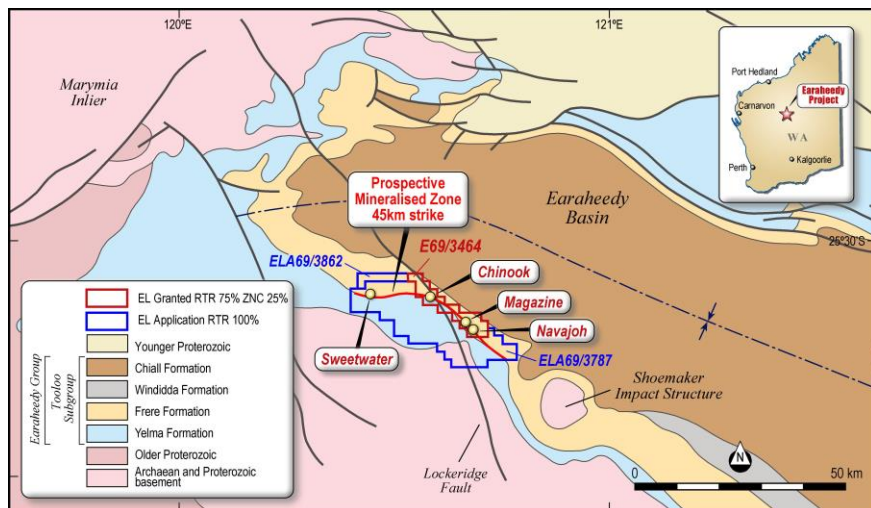
- Highly experienced technical geologist with over 20 years experience in gold and base metal deposits in Australia.
- Previously consulted to Evolution Mining, senior management positions at Independence Group, Jabiru Metals Ltd and AngloGold Ashanti.
- Oversaw the re-interpretation and successful definition of over 1Moz of gold as part of the Sunrise Dam Gold Mine Underground Feasibility Study, delivered the Tropicana Gold Deposit Pre-Feasibility Study (now over 7Moz) in Western Australia, and completed the Stockman Cu-Pb-Zn deposit Pre-Feasibility Study in Eastern Victoria.

Luke Timmermans Project Manager, Earaheedy

- Geologist with over 10 years' experience spanning a broad range of commodities.
- Senior roles with Gold Fields, Red 5 and Essential Metals.
- Involved with the re-discovery and development of the King of the Hills gold deposit as a bulk mining operation.

Earaheedy Zn-Pb-Ag Discovery

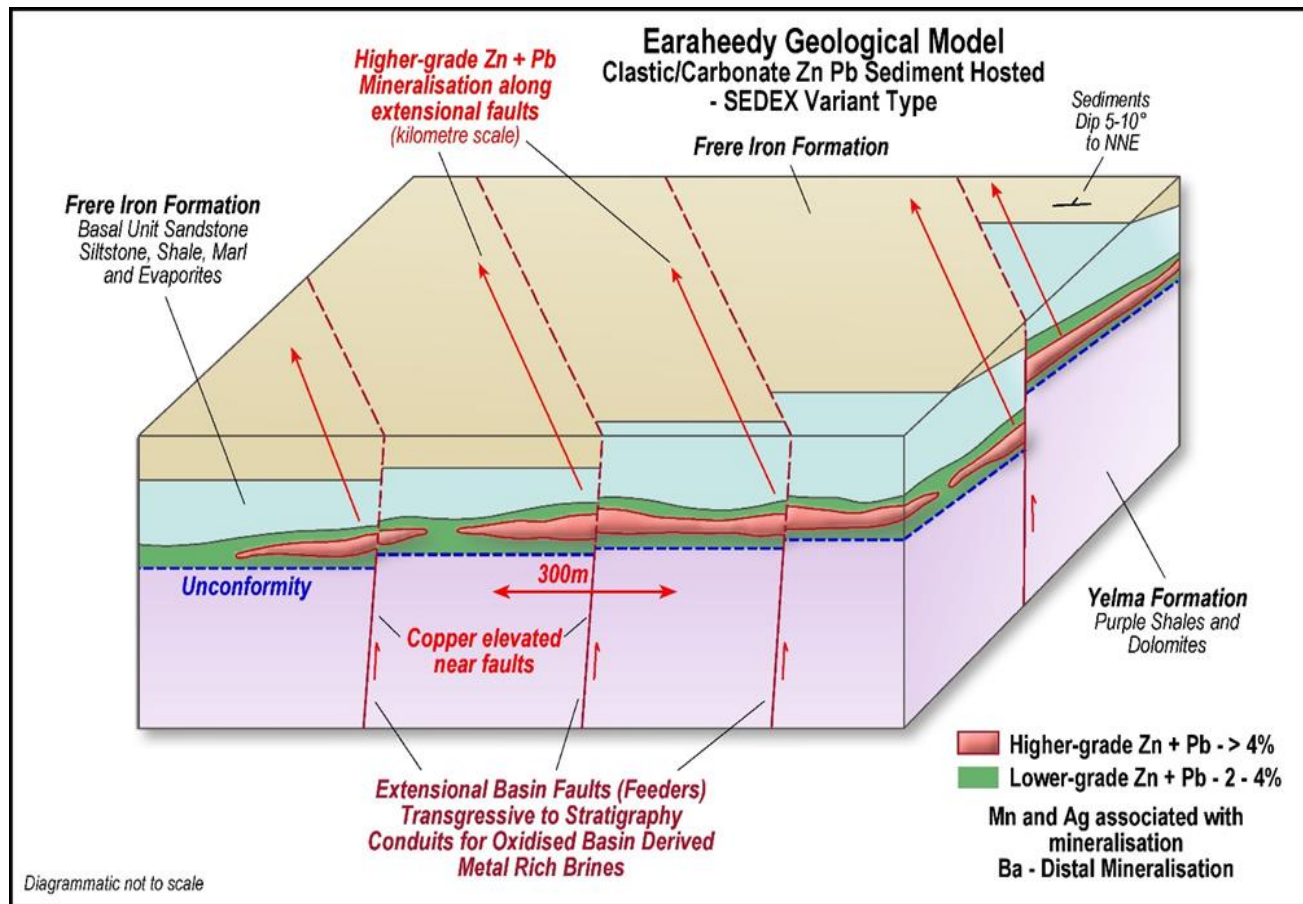
Tier 1 Scale Potential



- **Major Zn-Pb-Ag discovery** at Chinook prospect (EP 69/3464) announced 19 April 2021, 110km north of Wiluna
- Intersected **34m @ 4.22% Zn-Pb** from 66m including 15m @ **6.97% Zn + Pb, 5.4 g/t Ag** from 74m – True Width
- RTR has a 75% interest in E69/3464 and 100% of contiguous applications E69/3787 & E69/3862
- Project covers **45km of unconformity prospective strike** which remains untested and open in all directions
- Potential for multiple very large (Tier 1) Zn-Pb-Ag Sedex variant type deposits throughout the project
- Initial follow-up results from 30,000m RC and Diamond program are very encouraging - assays from first 4 holes:
 - extended mineralisation footprint by 125% to 3km x 1.8km, with mineralisation open in all directions
 - increased exploration target of 100–120Mt (3.5% - 4.5% Zn-Pb)
- Focus for 2H 2021 is on establishing the extent of mineralisation before targeting near-surface inferred high-grade feeder structures

Earaheedy Zn-Pb-Ag Discovery

Geological Model – Tier 1 Sedex Variant Type

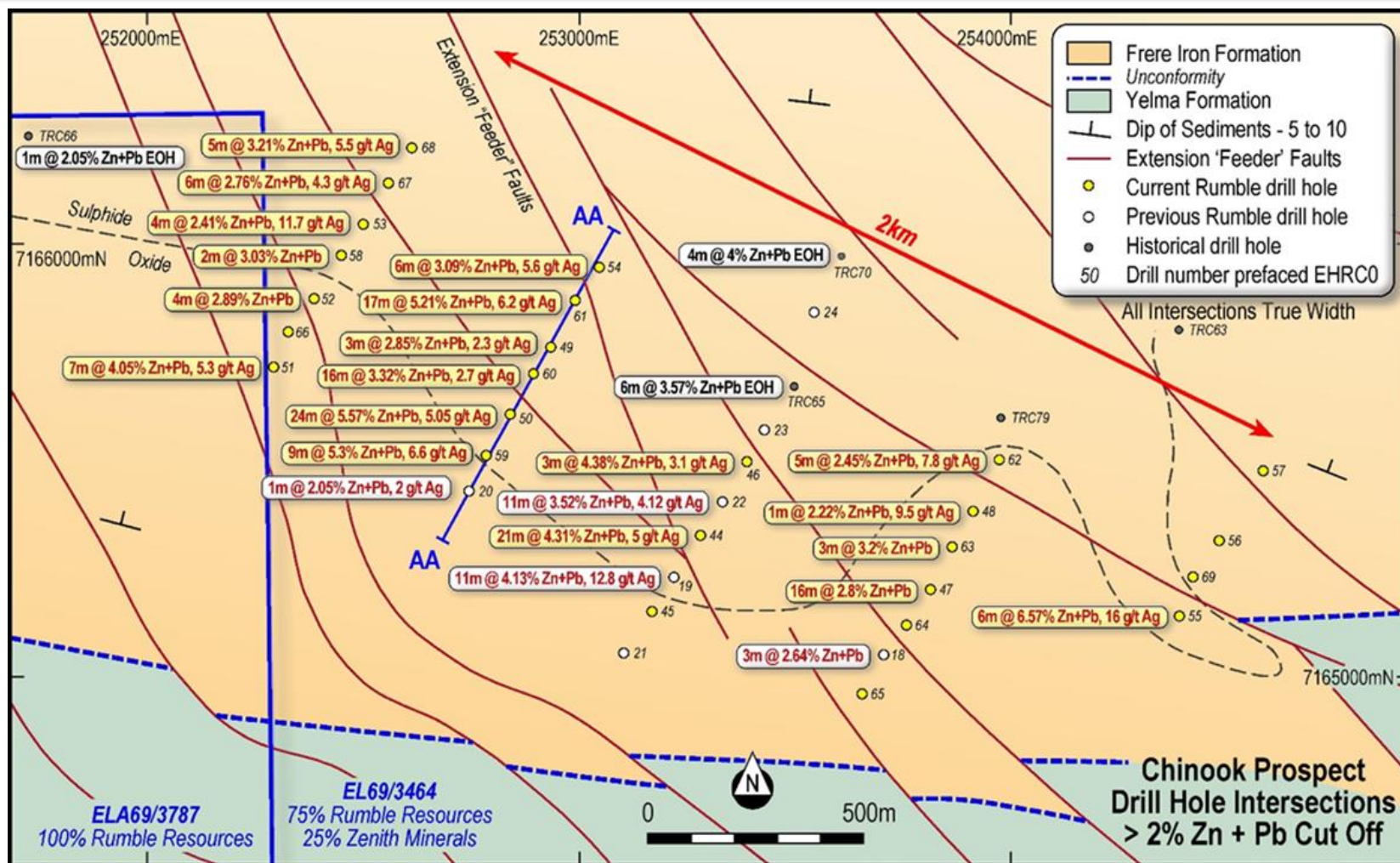


Mineralisation includes:

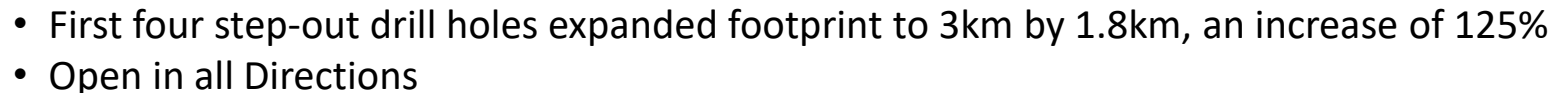
- Associated Manganese (**up to 26.6%**) and Silver (**up to 46.9 g/t**) with main Zinc-Lead mineralisation **Note:** Historic intercept **4m @ 559g/t Ag** highlights the potential for much higher silver grades
- Distal Barium anomalism (up to 2.45%)
- Low Cadmium with Zinc (60 to 100ppm) and high Zinc: Cadmium ratios (300 to 500)
- Significant increase in Copper anomalism proximal to feeder zones
- Massive Pyrite zones peripheral to base metal sulphides
- Pervasive widespread low temperature silica alteration
- Significant Sulphur after sulphate (anhydrite?)

- **Structural Setting:** Inferred extension faults (feeders) – swarms parallel to Lockeridge Fault
- **Geological Setting:** Large underlying shale/carbonate horizon – source of metal
- **Amenable host horizon:** Silstone, shale, sandstone, marl/micrite and evaporite (with potential redactant)

Chinook Zn-Pb-Ag Discovery - Earraheedy Initial Geology, Structures and Intercepts



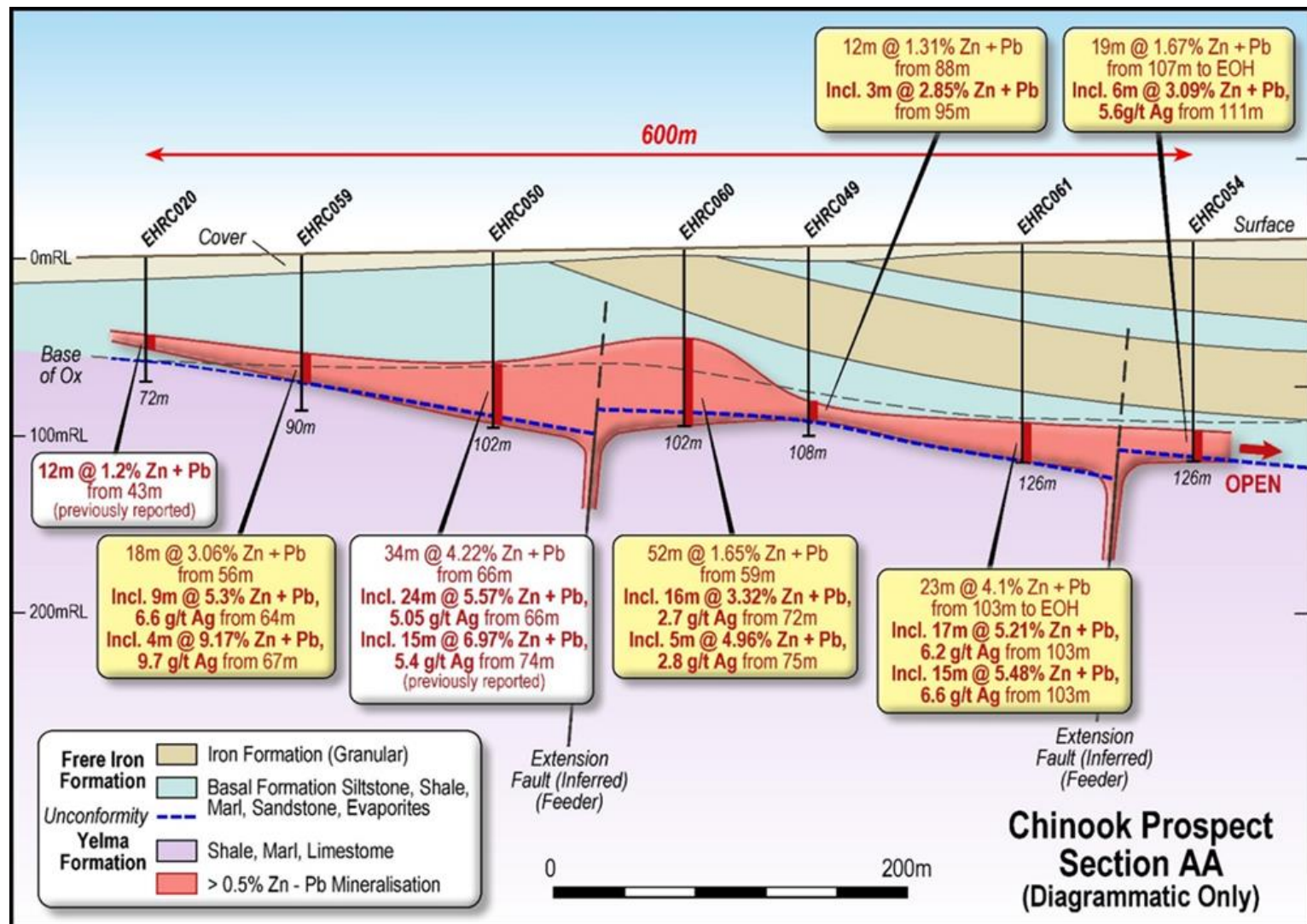
- Zn-Pb flat lying, confirmed over 2km x 1.2 km grid, up to 34m true width – all holes mineralised & open
- Interpretation based on geological and airborne magnetics is Zn-Pb-Ag grades increase significantly near extension NW feeder faults (Sedex Variant) – which importantly hasn't been targeted or tested



Chinook Zn-Pb-Ag Discovery - Earraheedy Initial Section AA



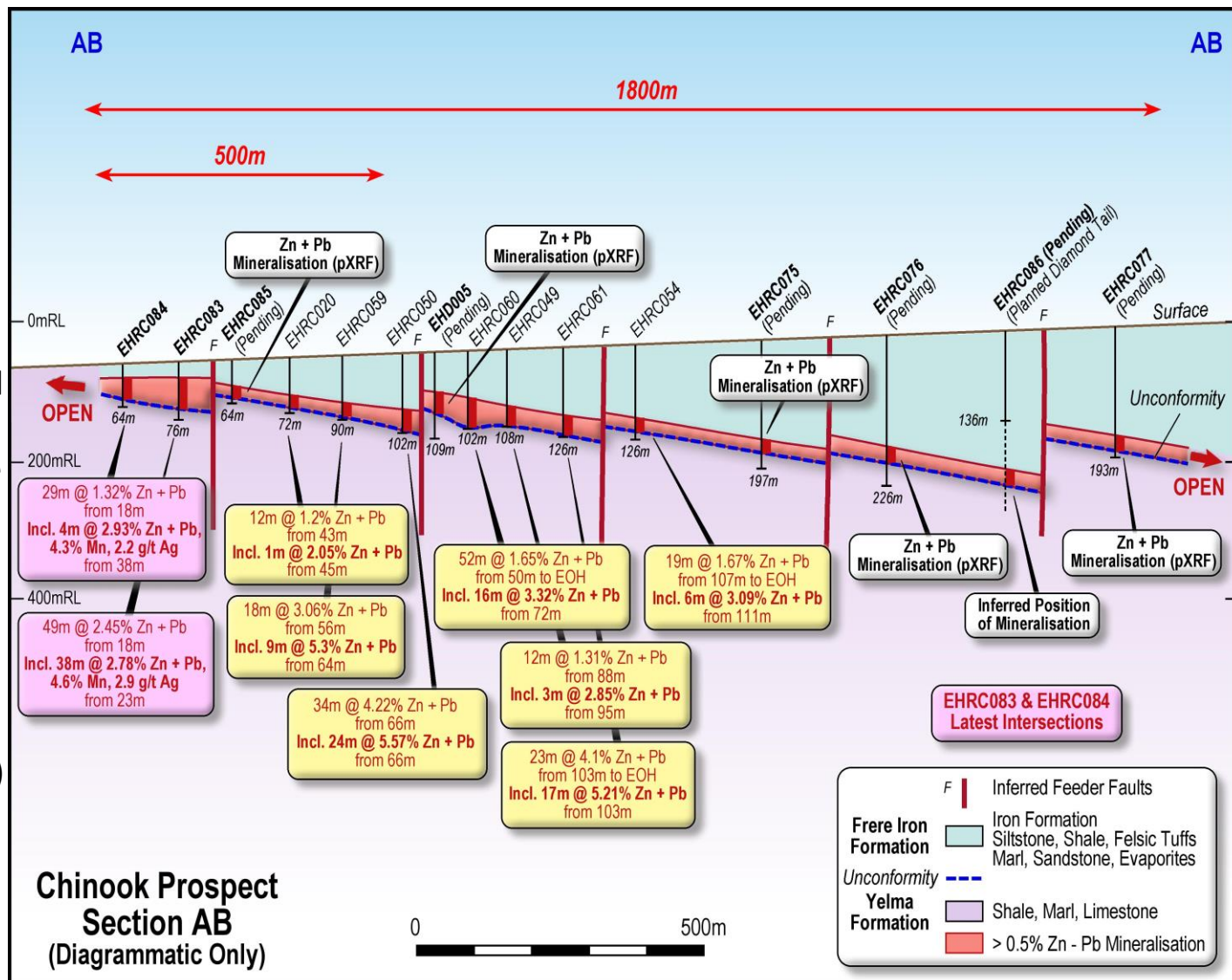
- Section over 600m wide and up to 34m vertical (true thickness) – Open
- Inferred multiple higher Grade Zn-Pb-Ag extension feeder faults (Sedex Variant Style)
- Extension feeder faults strike N/NW and mineralisation dips shallow to N/NE



Chinook Zn-Pb-Ag Discovery - Earraheedy Section AA Expanded to AB



- Section now over 1.8km – Open
- Inferred 5 multiple higher-Grade Zn-Pb-Ag extension feeder faults (Sedex Variant Style)
- Normal faults have lifted the mineralisation on eastern margin multiple occasions to open pittable depths
- Entire south-western corridor opened for the possibility of large-scale, shallow oxide, deposit(s) to complement the potential for large scale, sulphide, open cut and underground deposit(s)



Chinook Mineralisation - Earraheedy



Image: Blebby Sphalerite/Galena at Unconformity



Image: Coarse Pyrite with Sphalerite/Galena



Image – EHD006A – Soft sediment slumping - debris flow – (hanging wall) over partly silicified, brecciated alternating hard-soft Zn-Pb mineralization – Facies controlled transition zone.

Scale comparison with Chinook - Earraheedy Pering Zn-Pb Open Pit Mine, South Africa



Pering Zinc-Lead Mine, South Africa

- Total resource at Pering prior to mining was 42Mt @ 2.1% Zn, 0.4% Pb
- Open Pit mined by Tier 1 company Shell-BHP Billiton between 1986 – 2004 for 17 Years
- Historic production 20.5Mt of ROM ore milled at 2.6% Zn & 0.6% Pb
- Average production 1.2Mt pa
- 2 open pits to a depth of over 120m
- **Important: Exploration Target at Earraheedy is targeting a much larger resource and higher grade at similar depths**

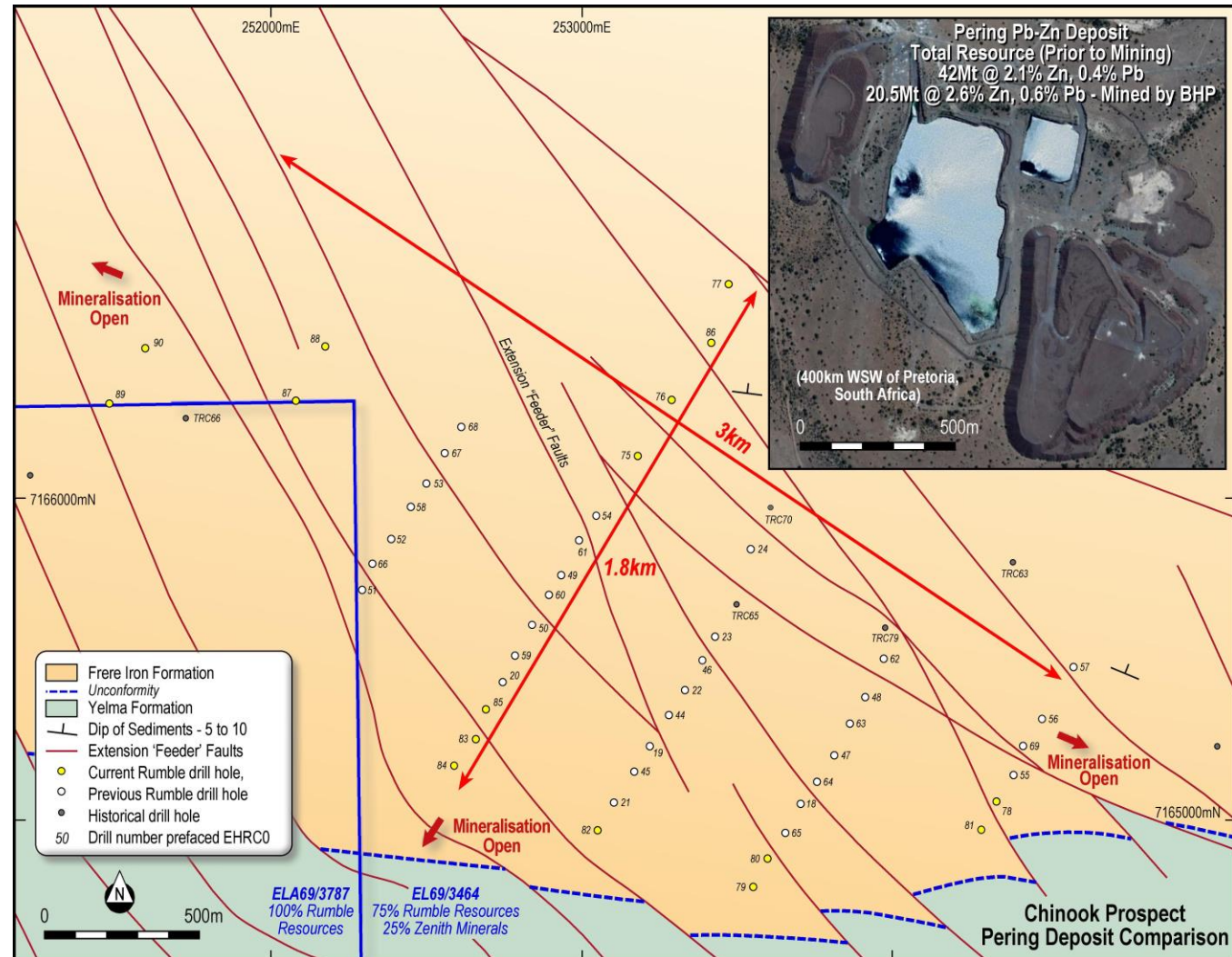
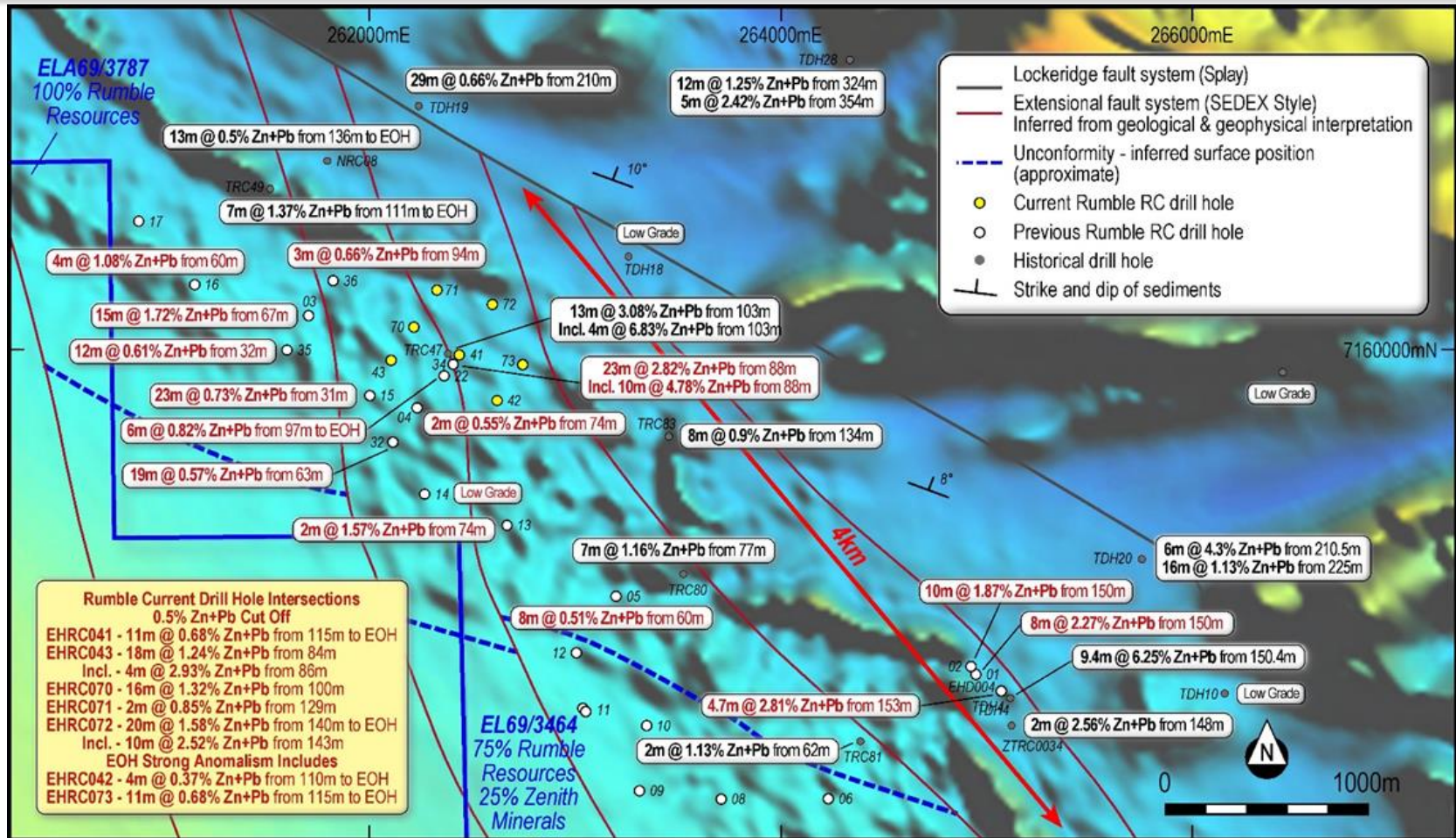


Image: Scale Comparison Map (top right) of Pering open pit over Chinook drilling (to scale)

* <https://red-pennant-communications.com/2020/10/05/updated-mineral-resource-model-of-pering-zinc-lead-deposit/>

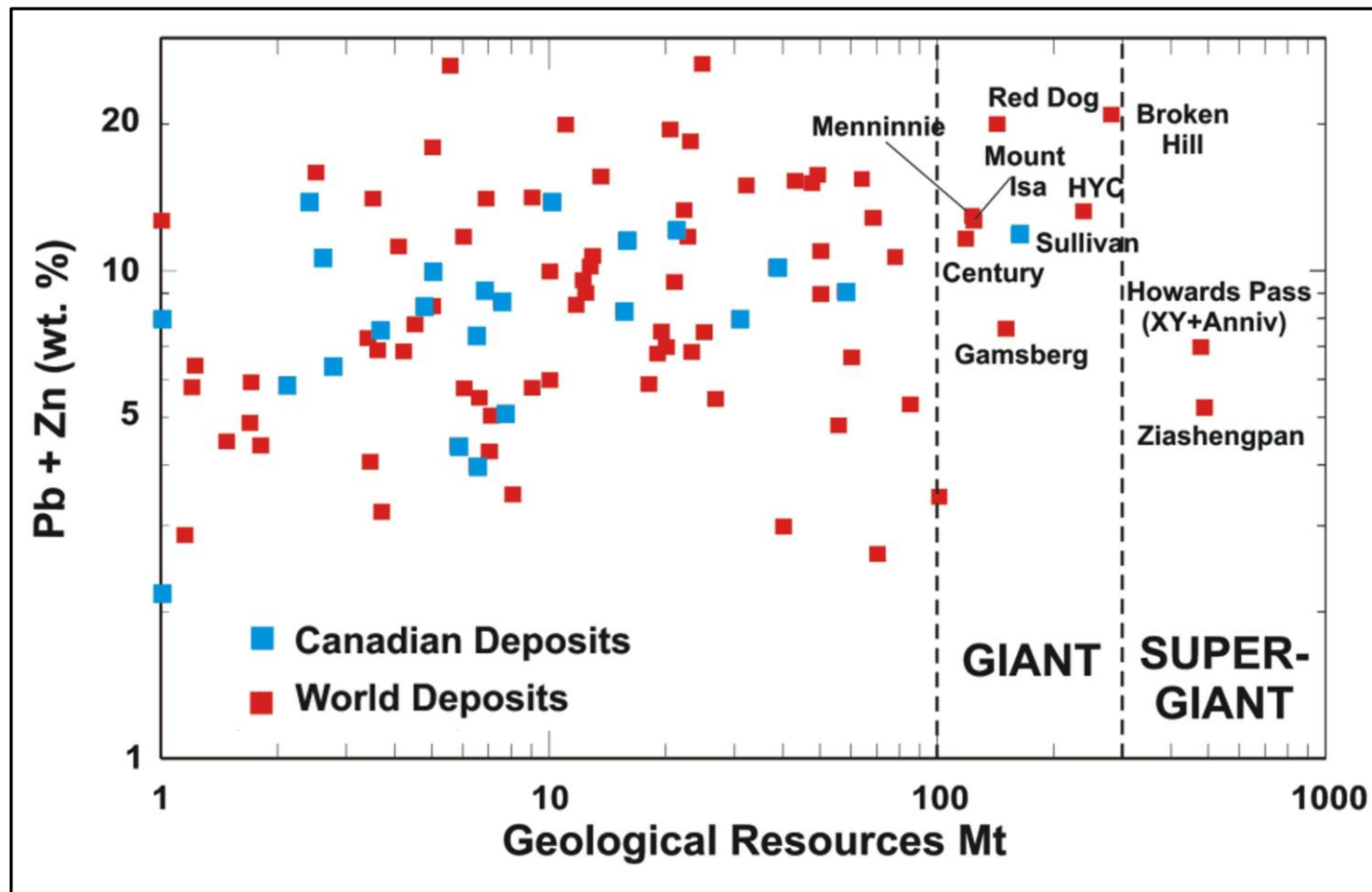
Magazine Zn-Pb-Ag Prospect - Earraheedy Geology, Structures and Intercepts



- The style of mineralisation at Magazine Prospect is similar to Chinook
- Zn-Pb grades increase significantly near interpreted inferred extension feeder faults
- **Each** inferred north north/west inferred feeder fault has the potential to develop higher-grade Zn-Pb-Ag Zones over the entire length of the planes

Earaheedy Zn-Pb-Ag Discovery

Tier 1 Scale Potential – Sedex Variant



- Sedex deposits accounts for 25% of Zn-Pb production and 50% of Zn & Pb reserves globally¹
- Sedex deposits form Giant and Super Giant Tier 1 Deposits³
- 6 of the 10 largest active zinc mines are Sedex Deposits²

Earaheedy Zn-Pb-Ag Discovery

First Stage Exploration Target



Rumble's first stage exploration target at the Earaheedy Project is between 100 to 120 million tonnes at a grade ranging between 3.5% Zn-Pb to 4.5% Zn-Pb. The exploration target is at a shallow depth (120m), and over 40kms of prospective strike (completely open) has been defined within the Earaheedy Project. The potential quantity and grade of the exploration target is conceptual in nature, there has been insufficient exploration to estimate a Mineral Resource and it is uncertain if further exploration will result in the estimation of a Mineral Resource. The exploration target, being conceptual in nature, takes no account of geological complexity, possible mining method or metallurgical recovery factors. The exploration target has been estimated in order to provide an assessment of the potential for large-scale Zn-Pb deposits within the Earaheedy Project. The exploration target has been prepared and reported in accordance with the 2012 edition of the JORC Code.

The exploration target is based on the current geological understanding of the mineralisation geometry, continuity of mineralisation and regional geology. This understanding is provided by an extensive drill hole database, regional mapping, coupled with understanding of the host stratigraphic sequence and a feasibility study completed at the nearby Paroo Pb deposit. Included in the data on which this exploration target has been prepared is recent RC drilling of 17 holes for approximately 2500m (RC/Diamond) (assays returned for 4 and 13 holes assays pending), 30 holes for 2690m (three RC stages), 33 holes for 3593m recently completed and diamond drilling of 4 holes for 1199.8m completed by Rumble along with 64 historic RC drill holes completed within the project area (E69/3464) by previous explorers (refer historical exploration results in previous ASX announcements dated 5 February 2019 and 12 October 2017, 23rd January 2020 which continue to apply and have not materially changed).

Earaheedy Zn-Pb Project – Exploration Target

Range	Tonnes	Grade
Lower	100,000,000	3.5% Zn + Pb
Upper	120,000,000	4.5% Zn + Pb

The Company intends to test the exploration target with drilling and this further drilling is expected to extend over approximately 12 months. Grade ranges have been either estimated or assigned from lower and upper grades of mineralisation received in drilling results. A classification is not applicable for an exploration target

Some of the considerations in respect of the estimation of the exploration target include:

- Drilling results have demonstrated strong continuity of shallow, flat lying mineralisation;
- Over 45km's of prospective strike and open (refer image on page 6);
- Minimum 600m of width (based on shallow 7.5° and shallow depth to 120m, based on drilling results.
- True width (thickness) of mineralisation up to 34 metres received in drilling results; and
- Specific gravity (SG) of 2.5 (world average SG of sandstone – not accounting for metal).

Earaheedy Zinc-Lead-Silver Discovery

Next Steps



- ❖ Major 30,000 Metre Drill Program Commenced
 - ❑ 1 Sonic Rig - *Metallurgy & Reconciliation*
 - ❑ 1 Diamond Rig - *Geology*
 - ❑ 3 RC Drill Rigs - *Scope limit of Chinook*
Target inferred high-grade feeders
Test Geophysical Targets
Discover New Prospects – 12km strike
- ❖ Gravity Program Commenced – *Cover Entire Tenement*
- ❖ Passive Seismic Commenced – *Chinook Prospect*

Pipeline of Projects De-risked Strategy Multiple Avenues to World Class Discoveries



Clear Strategy

- Generate a pipeline of projects at various stages of development
- Critically review each project to ensure capable of world class discoveries
- Negotiate low-cost upfront optionality
- De-risked due to multiple avenues to discovery

Discovery History

- Fast track low-cost drill target generation
- Drill first order targets for discovery
- Technical team discovered multiple deposits that turned into mines

Project Development

- Board and Management experienced in developing discoveries into mines

Four Advanced Projects, Large Scale Systems Discovered - Tier 1 Potential

Munarra Gully Au-Cu-Ag-Zn Project

- Amaryllis Prospect - Large Scale Au-Cu-Ag-Zn system discovered with intercepts: 57m @ 0.85 g/t Au, 0.27% Cu, 4.2 g/t Ag and 10m @ 2.88 g/t Au, 0.54% Cu, 7.5 g/t Ag
- Over 2.3km's of Au-Cu-Ag up to 50m wide and open in all directions
- Over 15km's of strike untested
- Large Scale Targets:
Large Scale Chibougamau Au-Cu-Ag shear vein style type deposits

Earaheedy Zn-Pb-Ag Project

- Major Zn-Pb-Ag Discovery
- Chinook Prospect 3km's x 1.8km's mineralisation in all holes and open in all directions
- Over 45km's of prospective strike - completely open
- Tier 1 Targets:
Multiple large tonnage Sedex Type Zn-Pb-Ag Deposits that are amenable to open cut mining

Braeside Zn-Pb-Cu-Ag-Au-V Project

- 60km's of mineralisation
- 45 Priority Cu-Au-Zn-Pb-Ag targets generated
- High-grade Pb-Zn-Ag breccia pipes discovered
- Broad Cu with Zn-Pb Intercepted - Potential new VMS Province
- Large Scale System Targets:
Large scale porphyry related base metal and VMS deposits

Warroo Cu-Zn-Pb-Ag-Au-U-Pt Project

- Warroo Hill member prospect - 18km's of strike with extensive shallow copper to 3.43% and Zinc to 26% remains untested
- Potential New VMS Province
- Large Scale Targets:
Large scale VMS type deposits

Two JV Projects in World Class Jurisdiction - Tier 1 Targets

Lamil Cu-Au Project

- \$10M farm out with AIC Mines (ASX:A1M)
- 26 Au-Cu targets located between world class Nifty & Telfer mines in Paterson Province
- Key target is Lamil Dome which has similar dome size, trend & inferred host rocks to the nearby Telfer Au-Cu Dome deposit (32Moz, 1Mt Cu resource)
- Tier 1 Targets:
Large scale Au-Cu deposits

Fraser Range Ni-Cu-Au Project

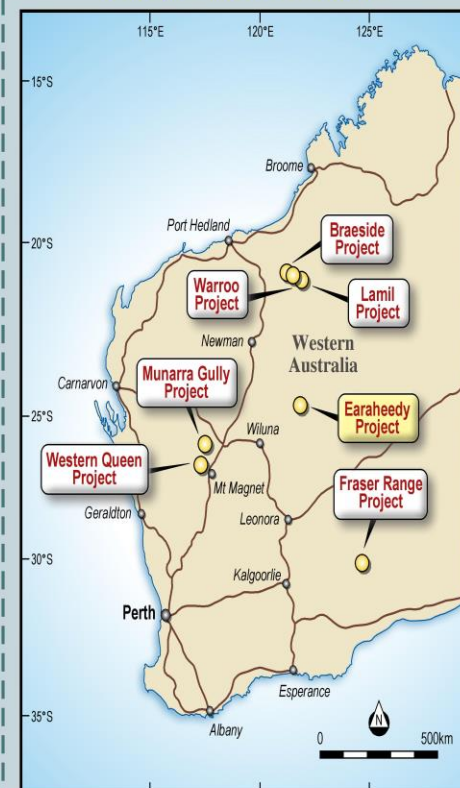
- JV with major IGO Limited (ASX: IGO) on 2 Projects
- Two high-grade Au discoveries 16m @ 6.69 g/t Au & 6m @ 9.15 g/t Au
- Magnetic low/gravity high targets & multiple EM conductors over a 12km Cu-Zn trend - 30km along strike from Mawsons Ni-Cu Discovery
- Tier 1 Targets:
Large scale Ni-Cu and Au deposits

Significant High-Grade Gold System

Western Queen Au Project

- Unmined open pit and underground resources of 163,268oz @ 2.42 g/t Au
- Significant high-grade intersections include:
6m @ 34.24 g/t Au, 6.3m @ 36.09 g/t Au, 7m @ 60.6 g/t Au & 6m @ 37.34 g/t Au
- Scope to significantly expand the resources at depth and discover new deposits along the 35km of WQ shear zone strike to be drill tested
- High-Grade System Targets:
Multiple high-grade gold open pit and underground deposits

All Projects in Western Australia



Company Activity and Key Milestones



Activity	Aug-21	Sep-21	Oct-21	Nov-21	Dec-21
<i>Rumble Focus</i>					
Earaheedy – 30,000m drilling program					
Earaheedy – Next Phase of Drilling					
Earaheedy – gravity and passive Seismic Surveys					
<i>JV Partner Advancing</i>					
Lamil JV Project – Drilling and Airborne EM					
Fraser Range JV Projects - Exploration					
<i>Rumble – Low Cost High Impact Exploration</i>					
Western Queen - maiden resources					
Munarra Gully – Drilling and DHEM					
Fraser Range – Airborne Mag and Soil Sampling					
Braeside – Ground IP, soils and mapping					
Braeside & Warroo – Airborne EM					
Braeside - Drilling					

Investor Contacts



Shane Sikora, Managing Director

E: info@rumbleresources.com.au

Web: www.rumbleresources.com.au

Address:

Level 1,
16 Ord St
WEST PERTH, WA 6005
+61 8 6555 3980

Connect with Rumble:



<https://twitter.com/RumbleResources>



<https://www.linkedin.com/company/rumble-resources-ltd>

Disclaimer



Disclaimer;

- This presentation has been prepared by Rumble Resources Limited (Rumble or the **Company**). It contains general information about the Company's activities current as at the date of the presentation. The information is provided in summary form and does not purport to be complete. This presentation is not to be distributed (nor taken to have been distributed) to any persons in any jurisdictions to whom an offer or solicitation to buy shares in the Company would be unlawful. Any recipient of the presentation should observe any such restrictions on the distribution of this presentation and warrants to the Company that the receipt of the presentation is not unlawful. It should not be considered as an offer or invitation to subscribe for or purchase any securities in the Company or as an inducement to make an offer or invitation with respect to those securities. No agreement to subscribe for securities in the Company will be entered into on the basis of this presentation or any information, opinions or conclusions expressed in the course of this presentation. This presentation is not a prospectus, product disclosure document or other offering document under Australian law or under any other law. It has been prepared for information purposes only. This presentation contains general summary information and does not take into account the investment objectives, financial situation and particular needs of any individual investor. It is not financial product advice and investors should obtain their own independent advice from qualified financial advisors having regard to their objectives, financial situation and needs. Rumble nor any of their related bodies corporate is licensed to provide financial product advice.
- This presentation and information, opinions or conclusions expressed in the course of this presentation contains forecasts and forward looking information. Such forecasts, projections and information are not a guarantee of future performance, involve unknown risks and uncertainties. Actual results and developments will almost certainly differ materially from those expressed or implied. There are a number of risks, both specific to Rumble, and of a general nature which may affect the future operating and financial performance of Rumble, and the value of an investment in Rumble including and not limited to title risk, renewal risk, economic conditions, stock market fluctuations, manganese demand and price movements, timing of access to infrastructure, timing of environmental approvals, regulatory risks, operational risks, reliance on key personnel, reserve estimations, native title risks, foreign currency fluctuations, and mining development, construction and commissioning risk.
- You should not act or refrain from acting in reliance on this presentation, or any information, opinions or conclusions expressed in the course of this presentation. This presentation does not purport to be all inclusive or to contain all information which its recipients may require in order to make an informed assessment of the prospects of Rumble. You should conduct your own investigation and perform your own analysis in order to satisfy yourself as to the accuracy and completeness of the information, statements and opinions contained in this presentation before making any investment decision. Recipients of this presentation must undertake their own due diligence and make their own assumptions in respect of the information contained in this presentation and should obtain independent professional advice before may any decision based on the information. No representation or warranty, express or implied, is made in relation to the fairness, accuracy or completeness of the information, opinions and conclusions expressed in the course of this presentation. To the maximum extent permitted by law, no representation, warranty or undertaking, express or implied, is made and, to the maximum extent permitted by law, no responsibility or liability is accepted by the Company or any of its officers, employees, agents or consultant or any other person as to the adequacy, accuracy, completeness or reasonableness of the information in this presentation. To the maximum extent permitted by law, no responsibility for any errors or omissions from this presentation whether arising out of negligence or otherwise is accepted. An investment in the shares of the Company is to be considered highly speculative.
- The exploration targets or conceptual exploration targets in this presentation or expressed during the course of this presentation are subject to completion of the necessary feasibility studies, permitting and execution of all necessary infrastructure agreements. In relation to any statements pertaining to future exploration targets or conceptual exploration targets, the nature of the exploration target means that the potential quantity and grade is conceptual in nature, that there has been insufficient exploration to define a Mineral Resource and that it is uncertain if further exploration will result in the determination of a Mineral Resource. This presentation and information, opinions or conclusions expressed in the course of this presentation should be read in conjunction with Rumble's other periodic and continuous disclosure announcements lodged with the ASX, which are available on the Rumble website. They involve risk and uncertainties that could cause actual results to differ from estimated results. Forward-looking statements include, but are not limited to, statements concerning the Company's exploration programme, outlook and target sizes. They include statements preceded by words such as "potential", "target", "scheduled", "planned", "estimate", "possible", "future", "prospective" and similar expressions.
- RTR confirms that it is not aware of any new information or data that materially affects the information contained in ASX announcement dated 2 August 2021 in relation to the Western Queen resource estimate. All material assumptions and technical parameters underpinning the mineral resource estimates continue to apply and have not materially changed.

Competent Person Statement:

- The information in this presentation that relates to Exploration Results, exploration targets or Mineral Resources is based on information compiled or reviewed by Mr Brett Keillor, who is a Member of the Australian Institute of Mining and Metallurgy. Mr Keillor has sufficient experience, which is relevant to the style of mineralisation and type of deposit under consideration and to activities undertaken, to qualify as a Competent Person as defined in the 2012 Edition of the "Australasian Code for Reporting of Exploration Results, Mineral Resources and Ore Reserves". Mr Keillor consents to the inclusion in the presentation of the matters based on his information in the form and context in which it appears.
- Refer previous announcements in respect of exploration results dated 8 July 2021, 2 June 2021, 19 April 2021, 23 February 2021, 17 February 2021, 15 February 2021, 3 February 2021, 28 January 2021, 4 November 2020, 6 October 2020, 20 May 2020, 4 May 2020, 24 April 2020, 17 Feb 2020, 11 Feb. 2020, 23 Jan 2020, 26 November 2019, 8 November 2019, 21 November 2019, 21 October 2019, 1 October 2019, 23 August 2019, 22 August 2019, 6 August 2019, 11 July 2019, 1 July 2019, 4 April 2019, 12 March 2019, 12 February 2019, 6 February 2019, 17 December 2018, 27 November 2018, 30 August 2018 and 9 August 2018. The resource and acquisition terms for the Western Queen Au Project was disclosed in the ASX announcement dated 6 August 2019. Rumble is not aware of any new information or data that materially affects the information included in that relevant market announcement and that all material assumptions and technical parameters underpinning the estimates in the relevant market announcement continue to apply and have not materially changed.

References

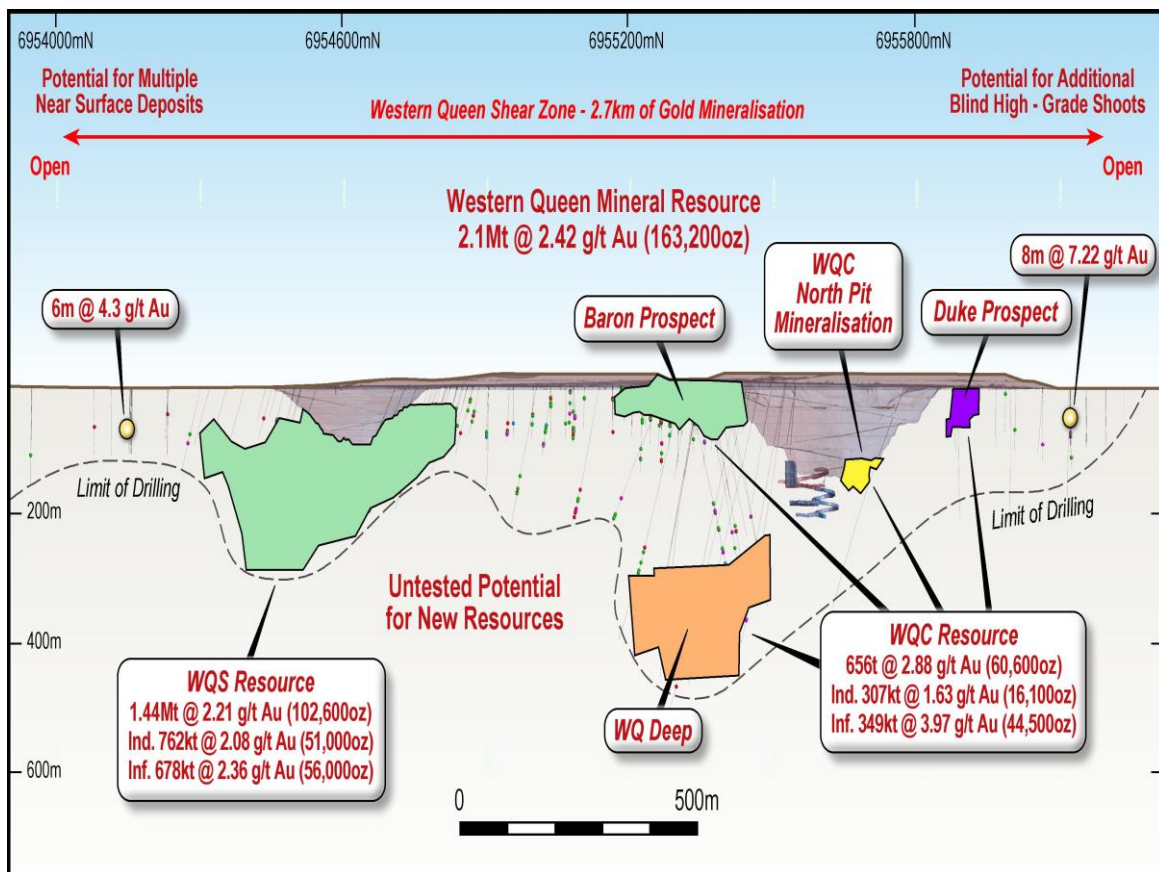
1. Sedimentary Exhalative (Sedex) Zinc-Lead-Silver Deposit Model, Chapter N of Mineral Deposit Models for Resource Assessment, US Department of the Interior, U.S. Geological Survey, Reston, Virginia: 2016 <https://pubs.usgs.gov/sir/2010/5070/n/sir20105070n.pdf>
2. RANKED: Top 10 zinc mines in the world MINING.com, November 3, 2020, <https://www.mining.com/featured-article/ranked-top-10-zinc-mines-in-the-world/>
3. Page 10 - <https://www.g1metallurgist.com/blog/SEDEX-sedimentary-exhalative-ore-deposits>

Appendices



Western Queen Project – High-Grade Au System

Open Pit and Underground Resources



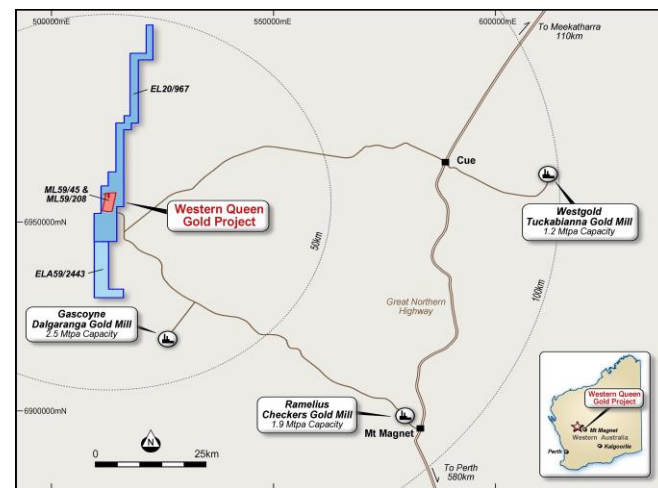
Cut-off g/t	Classification	Tonnes (t)	Au g/t	Contained Metal
O/C @ 0.5 UG @ 1.5	Indicated	1,069,218	1.95	67,145
	Inferred	1,027,954	2.91	96,123
	Total	2,097,172	2.42	163,268

Western Queen Project (100% RTR)

- Located within a 110km radius of three operating gold processing mills
- Resources on mining leases and strike extent on granted exploration permit
- Potential for immediate development of open-pit and underground operations

Resource Expansion Potential

- Immediately below the current resources at WQ South and WQ Central
- Between WQ Central and WQ South at Depth
- Northeast along strike from the Duke Prospect
- South along strike WQ South



Western Queen Project – High-Grade Au System

Regional Exploration Upside

- Rumble owns 35km of the Western Queen Shear Zone which hosts the Western Queen resources, with exceptional potential for further discoveries and delineation of new mineral resources due to lack of drilling
- High-Grade gold intercepts showcase the exploration upside along the Western Queen Shear Zone including:

Western Queen South

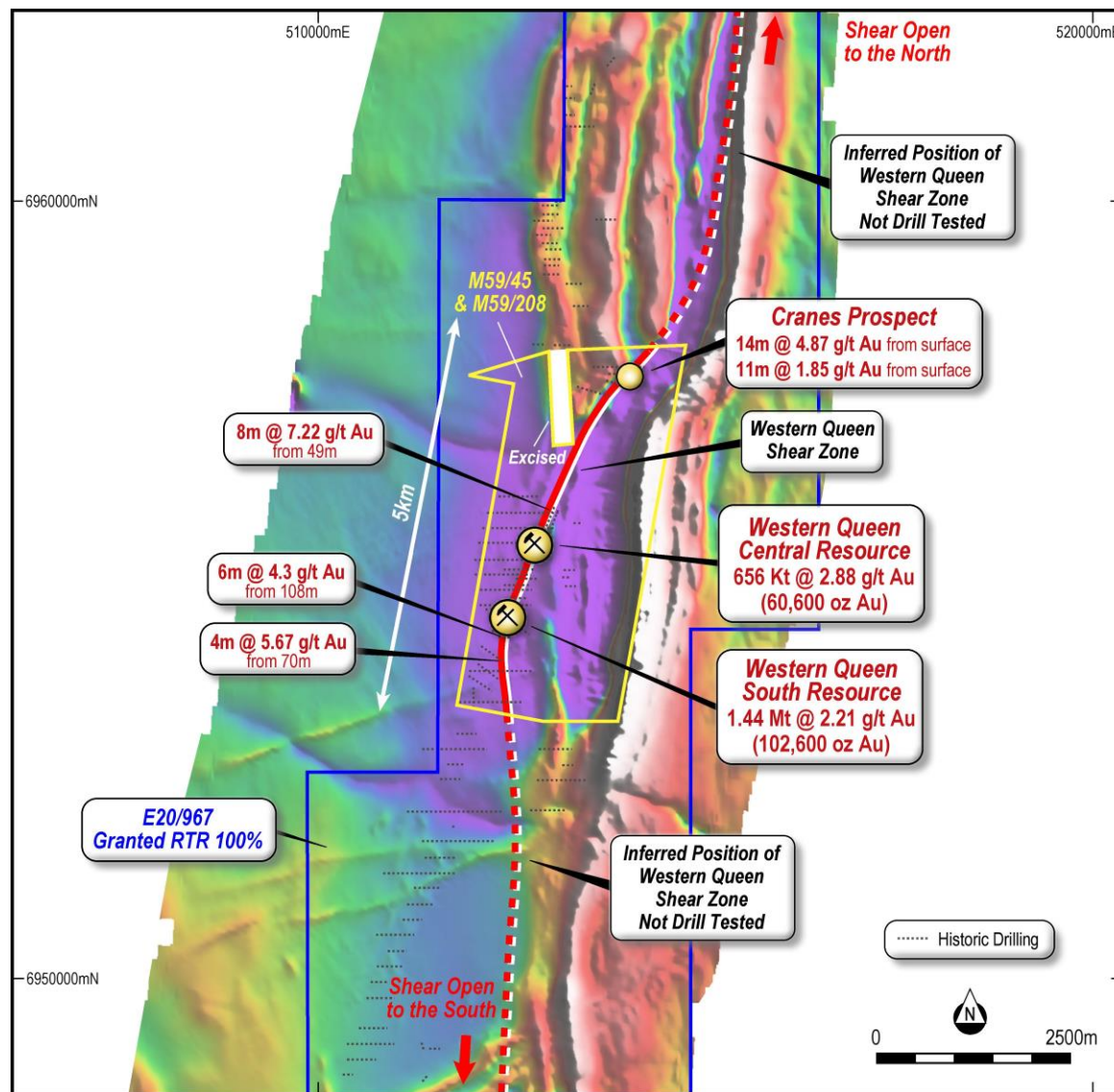
- 4m @ 49.73 g/t Au from 134m (QND-38975-1)
- 5m @ 38.76 g/t Au from 193m - (WQRC188)
- 17m @ 5.7 g/t Au from 221m – (WQRC188)

The Duke (North of Western Queen Central)

- 8m @ 26.27 g/t Au from 14m (WQRC155)
- 6m @ 25.87 g/t Au from 48m (WQRC157)
- 7m @ 60.6 g/t Au from 70m – (WQJC-32)
- 6m @ 37.34 g/t Au from 50m – (QNC-10310-1)

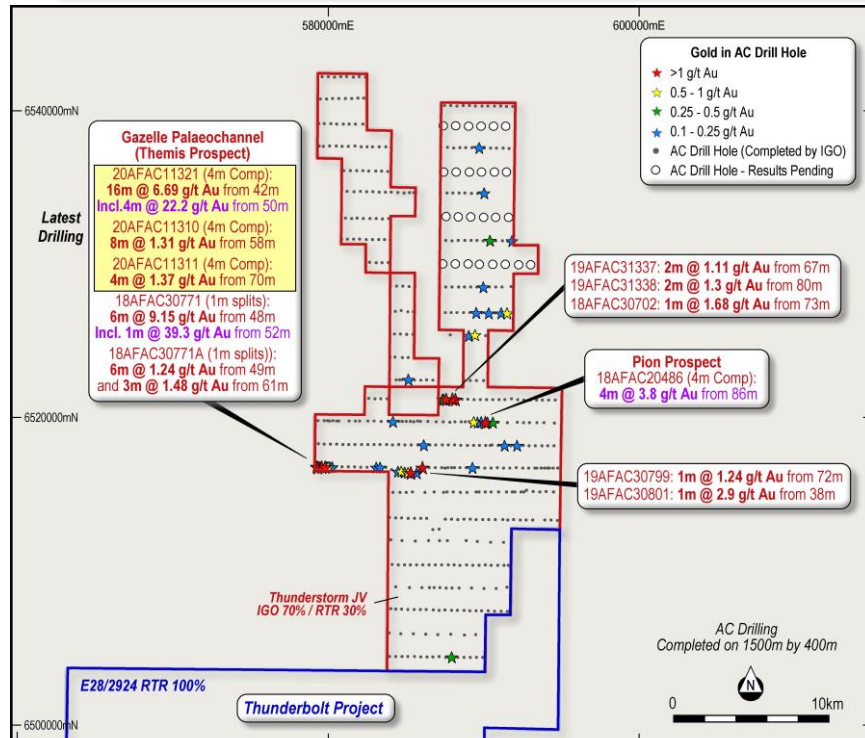
Western Queen Central

- 6.4m @ 36.09 g/t Au from 305.7m (WQD-1072)
- 6m @ 34.24 g/t Au from 354m (WQRC007D)
- 5m @ 22 g/t Au from 280m (WQRC150)
- 11.8m @ 16.08 g/t Au from 340.4m (WQD-1089)



Thunderstorm & Thunderbolt Projects - Fraser Range

Tier 1 Au Targets



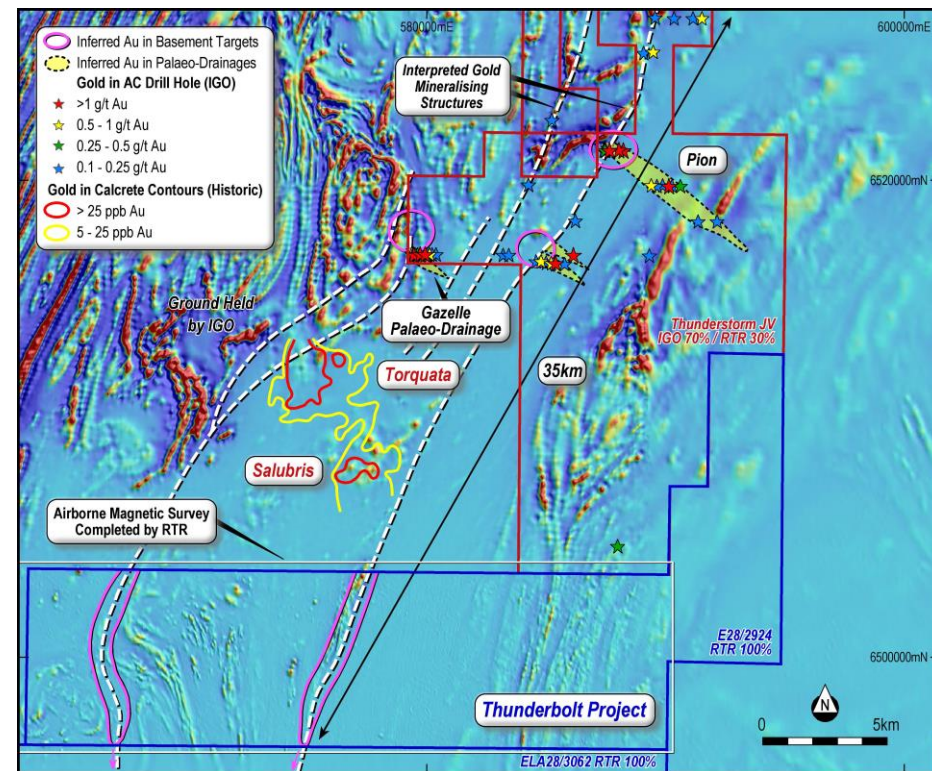
- **IGO Gold Grain Study** - Primary and secondary detrital gold crystals occur indicating High-grade Gold is potentially close to a primary source
- Primary forms have block, crystal, and rod-like shapes with angular edges

Thunderstorm JV Project (IGO 70% RTR 30%)

- Reconnaissance AC drilling 1.5km by 400m intersected widespread gold throughout the project including **high-grade gold at Themis**:
 - **16m @ 6.69 g/t Au** from 42m (20AFAC11321)
 - **6m @ 9.15 g/t Au** from 48m (18AFAC30771)

Thunderbolt Project – (RTR 100%)

- Lies south of and contiguous to the Thunderstorm JV Project



Thunderdome JV Project – Fraser Range Large Scale Ni-Cu Targets



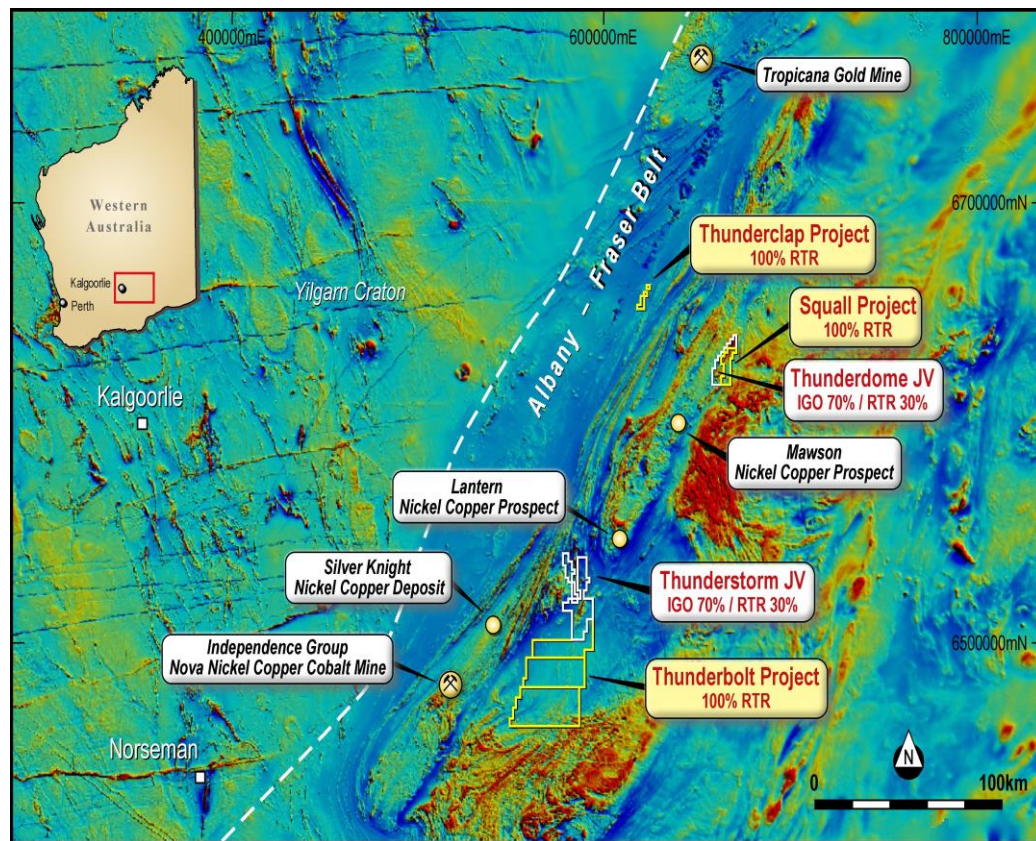
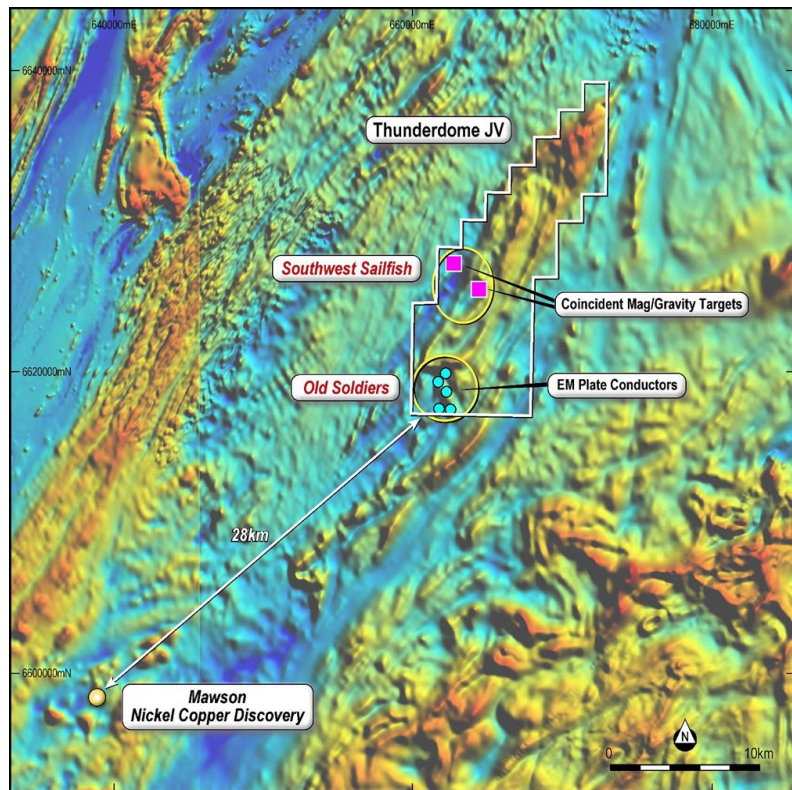
Thunderdome JV Project (IGO 70% RTR 30%)

Sailfish Ni-Cu Tier 1 Targets

- Magnetic low/gravity high features conceptual targets analogous of Legend Mining's Mawson Ni-Cu discovery (Located 30km NE along trend)

Old Soldiers Ni-Cu-Zn Tier 1 Targets

- Multiple EM conductors over a 12km Cu-Zn trend

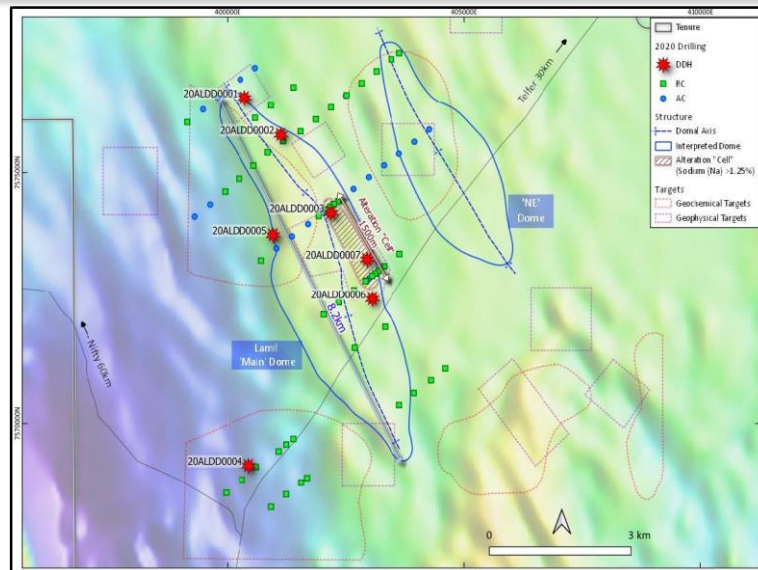
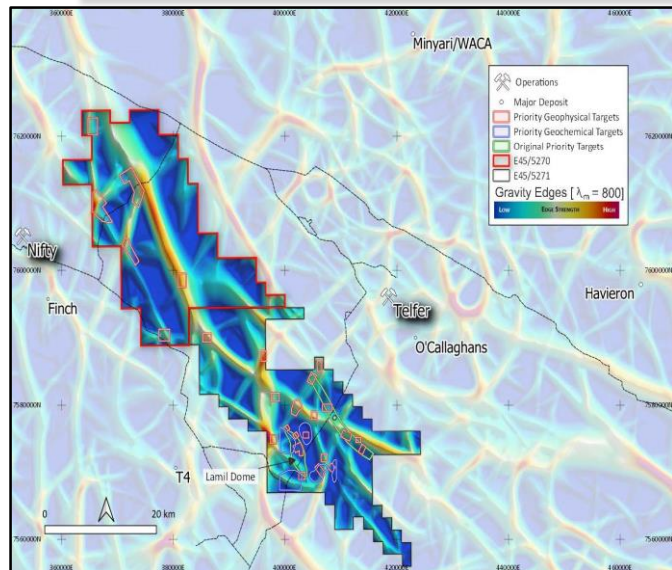


Albany Fraser Range Province

- World Class Nova Nickel Copper Cobalt Mine
- World Class Tropicana Gold Mine
- Highly sought-after region with new Silver knight and Mawson Discoveries

Lamil JV Project – Paterson Province

Tier 1 Au-Cu Targets

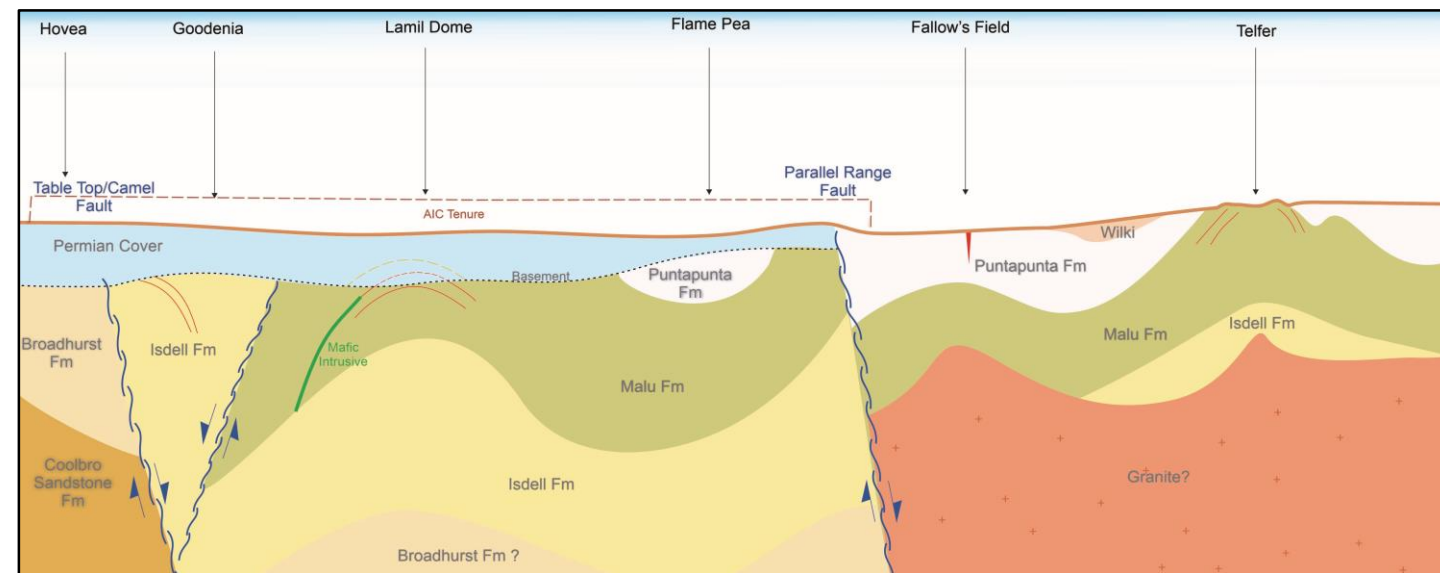


(RTR 100% - AIC Earning up to 65%)

- AIC Mines can earn 50% interest by spending \$6 million at Lamil over 4 years, thereafter AIC can earn a further 15% by spending \$4 million over 1 year if Rumble does not elect to contribute.
- Key target is Lamil Dome which has similar dome size, trend, & inferred hosts roc to the nearby Telfer Au-Cu Dome deposit (32Moz, 1Mt Cu resource)

Maiden Drill Program

- Broad 1.6km and 400m wide spacing Interpreted to intersect the Lamil Group sequence which host Telfer gold-copper mine, the Haviron gold-copper and Winu copper-gold deposits.
- Identified key elements to host intrusive related gold-copper deposits with the right basement lithologies, large scale structures (faults, folds, brecciation - IOCG plumbing system) and key pathfinder elements including copper, bismuth, gold and lead with elevated Iron, Sulfur - a valuable geochemical signature to help vector towards primary source.



Munarra Gully Project Large Scale Au-Cu-Ag Targets



Munarra Gully Project

Amaryllis Prospect (100% RTR)

- Over 2300m of Au-Cu-Ag mineralised strike confirmed
- Open in all directions
- Au-Cu-Ag in wide alteration zones up to 50m true width
- Strong strike and dip length continuity of Au-Cu-Ag

Significant Au-Cu-Ag mineralisation:

- 57m @ 0.85 g/t Au, 0.27% Cu 4.2 g/t Ag from 100m (AMRC015)
- 40m @ 0.89 g/t Au, 0.39% Cu, 5.7 g/t Ag from 108m (AMRC016)
- 8m @ 1.11% Cu, 0.88 g/t Au, 11.8 G/t Ag from 102m (AMRC003)

High-grade Au mineralisation:

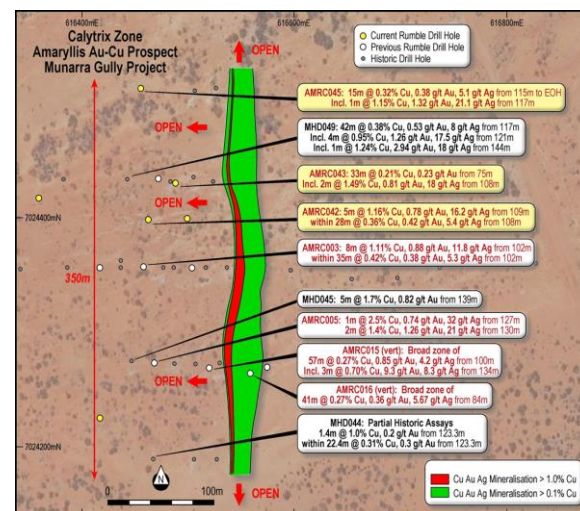
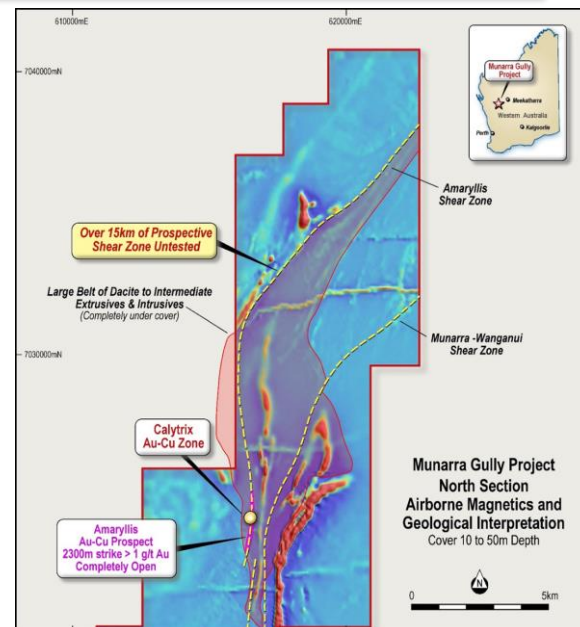
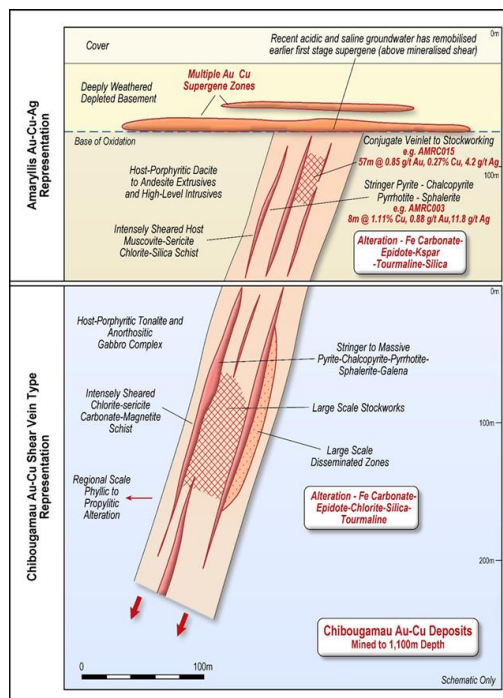
- 2m @ 13.45 g/t Au from 92m (AMRC012)
- 4m @ 6.21 g/t Au from 94m (AMRC006 – 4m composites)

Geological Comparison

Chibougamau Au-Cu Shear Vein Deposit

- The style of mineralisation has similar characteristics with Chibougamau Au-Cu-Ag shear vein style deposits located in the eastern part of the Abitibi Greenstone Belt in Quebec, Canada. At Chibougamau, major (later) shearing has overprinted earlier deformation within an area of high-level porphyries (Au-Mo-Cu) and minor VMS that have intruded into early sediments and mafic intrusive complex rock types.
- Of Note: Chibougamau Au-Cu-Ag shear vein style deposits have produced 3.5 million oz (gold) and 1 million copper metal tonnes at an average weighted grade of 1.76% Cu and 2.05 g/t Au. Some of the deposits at Chibougamau have been mined down to 1.1km in depth.

Criteria	Amaryllis Au-Cu-Ag Prospect	Chibougamau Au-Cu Shear Vein Deposit Type
Commodities	Au-Cu-Ag	Au-Cu-Ag
Mineralisation	Pyrite-chalcopyrite-pyrrhotite-sphalerite	Pyrite-chalcopyrite-pyrrhotite-sphalerite-galenite
Deformation and Alteration of Host (pervasive)	Intensely sheared/mylonised muscovite-sericite-chlorite-silica zones partitioned within weakly foliated to massive host Alteration zones 50-100m width Limited drilling outside zone	Intensely sheared/mylonised chlorite-sericite-carbonate+/-magnetite zones partitioned within undeformed host 100m scale breccia – disseminated-stockwork Km scale phyllic to propylitic
Alteration Associated with Mineralisation	Fe carbonate (ankerite)-epidote-Kspar-tourmaline-silica	Fe carbonate (ankerite)-epidote-chlorite-silica-tourmaline
Host Rocks	Porphyritic dacitic to andesitic extrusives high-level intrusives with later tonalitic dykes	Porphyritic tonalite intruding into anorthositic gabbro complex
Ore Zone Characteristics	Stringer sulphide shears with semi massive sulphide zones Evidence of large lower grade stockwork/disseminated zones	Stringer to massive sulphide shear vein (2 to 5m wide mineable) – large disseminated/stockwork zones Strong dip component to ore zones. Lesser strike component



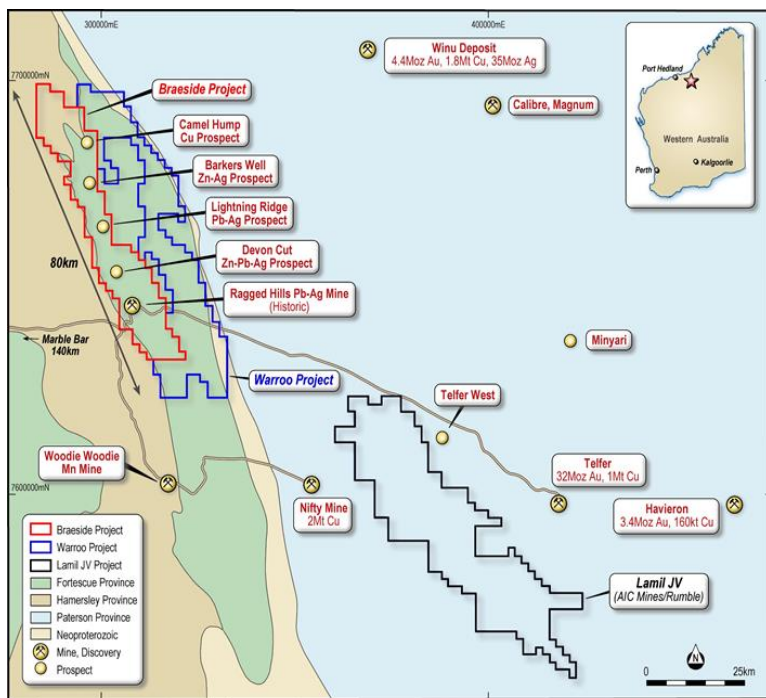
Braeside Project – Large Scale System

30+ High Priority Cu-Au-Zn-Pb-Ag Targets



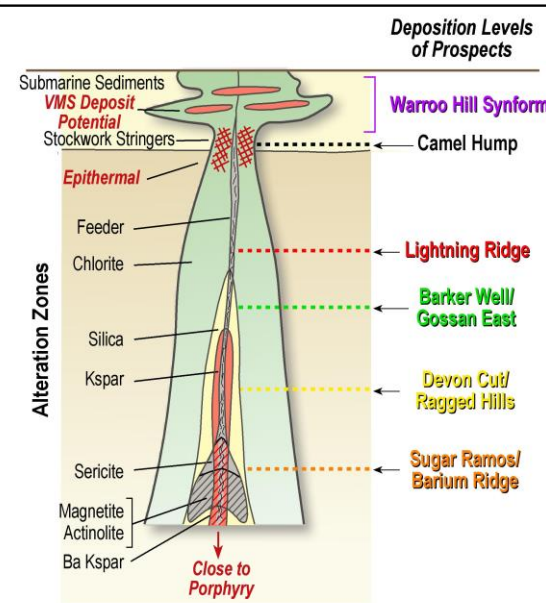
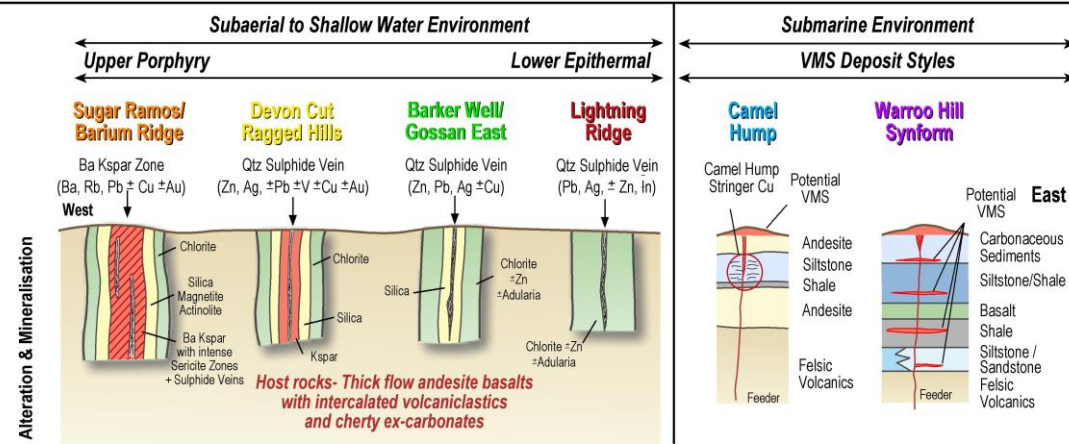
Braeside Project (100% RTR)

- Regional Scale Porphyry, Epithermal and potential VMS province fracture system over 60km in strike and 8km in width
- Over 30 high priority base metal targets including:
 - Barkers Well Prospect** – 800m long fracture zone with multiple high grade Pb breccia pipes
 - Camel Hump Cu Prospect** - Wide zone of oxide stringer copper hosted in volcanoclastic siltstone and shale – VMS Potential



Schematic only
not to scale

Braeside-Wareroo Geological Model

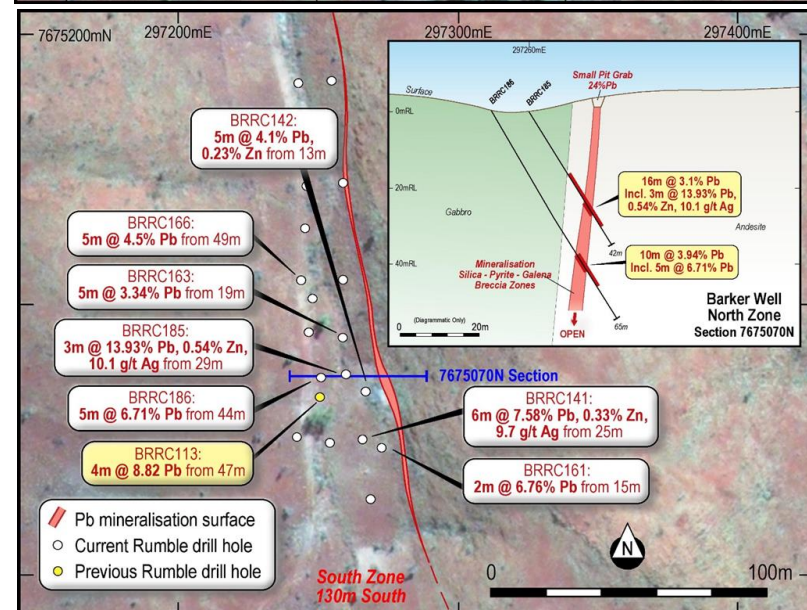
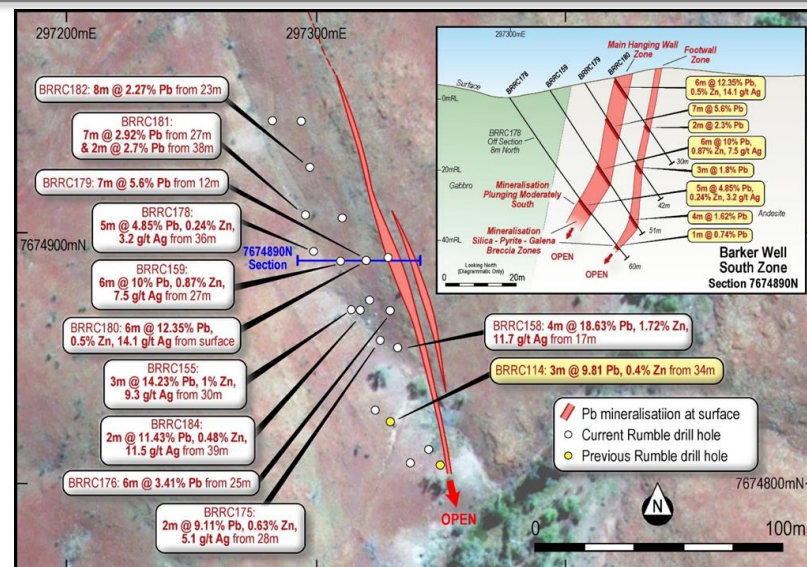
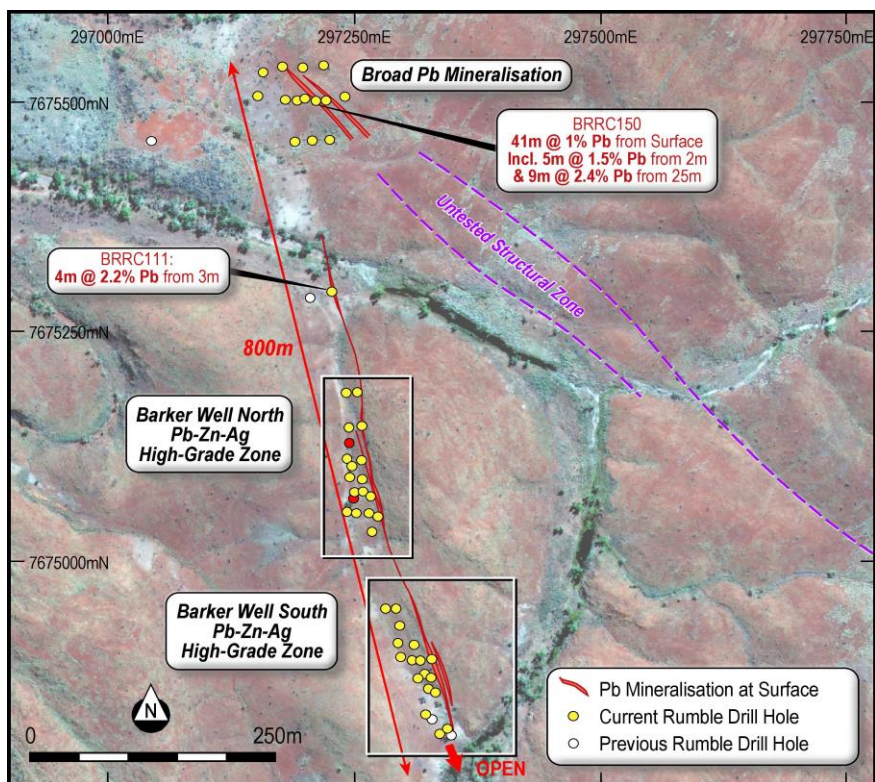


Braeside Project – Barker Well Prospect High-Grade Pb-Zn-Ag Breccia Pipes



High-Grade Lead-Zinc-Silver Intersected

- Three steep dipping galena breccia zones @ defined over 800m
- Mineralisation is open in all directions
- Drilling is shallow with 80% of drilling to depth of only 50m
- High-grade galena (sulphide) starts at surface and is associated with sphalerite (Zn) and silver (Ag) hosted in andesitic basalts and volcanoclastics.



Braeside Project – Camel Hump Cu Prospect Potential Large Scale VMS Province



Broad widths of Copper Intersected

New copper discovery confirmed with shallow RC results:

- **35m @ 0.55% Cu from 8m (CHRC010)***

Including: **8m @ 1% Cu from 11m &**

- **37m @ 0.46% Cu from 19m (CHRC011)***

Including: **5m @ 0.86% Cu from 22m &**

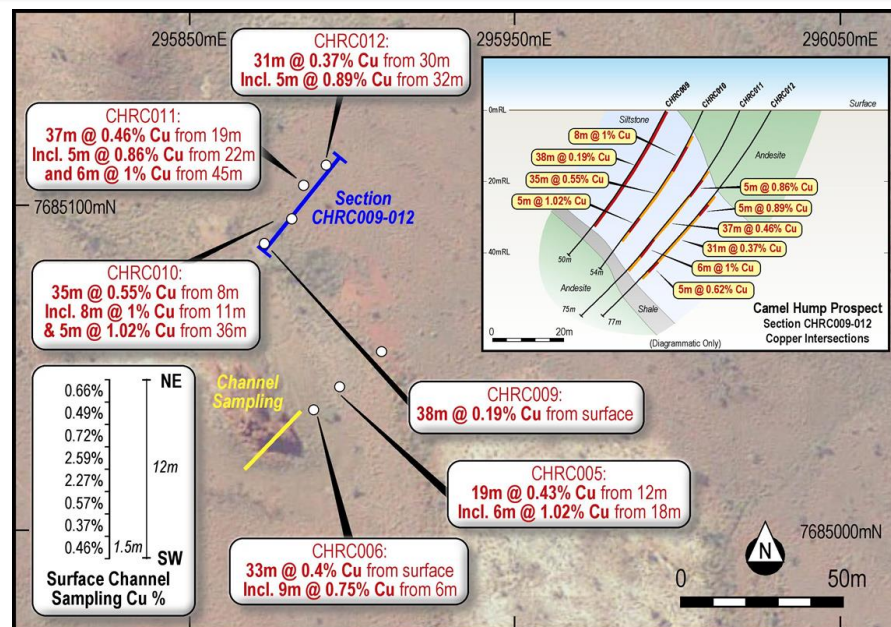
6m @ 1% from 45m

***intersections are true width**

- Six (6) of the eight (8) drill holes returned significant widths of oxidised stringer style malachite, chalcocite and native copper mineralisation
- No previous drilling completed in target region – Completely open

Potential New VMS Province

- Copper mineralisation is hosted in siltstone (volcaniclastic) intercalated with andesite, shale and is associated with zinc, lead and elevated silver
- Mineralisation style is volcanogenic (VMS)
- **Of Importance:** Drilling intersected the potential Copper Footwall stockwork stringer zone which is normally below the main High-Grade VMS Deposit Zone – **See Page 27**



Warroo Project

Potential Large Scale VMS Province



Warroo Project (RTR 100 %)

- Copper and zinc anomalism is associated with bimodal (felsic to mafic) volcanics and associated volcanoclastics/sediments of the Warroo Hill Member Synform.
- Over 18km of highly prospective strike under shallow sand cover has been delineated.
- Historic exploration outlined extensive copper and zinc anomalism from shallow broad spaced RAB drilling associated with a large gravity feature.
- Grab sampling returned significant mineralisation at the Warroo Prospect:
 - Cu assays include – 3.43%, 2.04% and 1.51%
 - Zn assays include – 26.0%, 23.5% and 19.1%

Of high importance:

- The host lithology to the copper mineralisation at Camel Hump has similar characteristics to the Warroo Hill Member lithologies.
- The Camel Hump and Warroo Hill Member lithologies lie within the same corridor with respect to strike and structure.

Potential for a significant new VMS province

