

ASX ANNOUNCEMENT

18 August 2021

**PROFESSOR PETER COOK TO PRESENT AT THE CARBON CAPTURE AND STORAGE
CONFERENCE ON WEDNESDAY 18 AUGUST**

Please find attached Professor Peter Cook's presentation at the Informa Australia Carbon Capture and Storage (CCS) Conference on Wednesday 18 August.

MEC Resources Ltd ASX:MMR (**MEC**) investee Advent Energy Ltd (**Advent**) has appointed of Professor Peter Cook as an advisor on geosequestration for its project in the Offshore Sydney Basin. Professor Peter Cook is an eminent Australian and international earth scientist. He is a leader in the development and application of carbon capture and storage (CCS) technologies and has published more than 30 papers and articles on greenhouse gas technologies, including the books "Clean Energy Climate and Carbon" and "Geologically Storing Carbon", and was an IPCC Co-ordinating Lead Author. He first drew attention to Australia's CCS opportunity more than 20 years ago, then going on to establish national CCS programs and research facilities through the Petroleum CRC and the Cooperative Research Centre for Greenhouse Gas Technologies (CO2CRC). In 2011, the University of Melbourne established the Peter Cook Centre for CCS Research.

With the Morrison Government's recent announcement of an additional \$539.2m for hydrogen and CCS in May's budget, carbon capture is now a key part of Australia's transition towards clean energy and carbon neutrality. One of the priority technologies in Australia's Technology Investment Roadmap, CCUS technology has been identified by the International Energy Agency (IEA) as the only large-scale mitigation option available that can deliver the additional CO2 emissions reductions that would be necessary to meet the climate goals in 2050.

Authorised for release by



David Breeze
Managing Director



ADVENT ENERGY LIMITED

DEVELOPING A CARBON STORAGE PROJECT PEP11 – Offshore Sydney Basin

August 2021

Professor Peter Cook,
CCS Adviser to Advent Energy





IPCC Sixth Assessment Report 2021

“It is unequivocal that human influence has warmed the atmosphere, ocean and land

The scale of recent changes across the climate system as a whole and the present state of many aspects of the climate system are unprecedented

Global warming of 1.5°C and 2°C will be exceeded during the 21st century unless deep reductions in carbon dioxide (CO₂) and other greenhouse gas emissions occur in the coming decades

Under scenarios with increasing CO₂ emissions, the ocean and land carbon sinks are projected to be less effective at slowing the accumulation of CO₂ in the atmosphere.

limiting human-induced global warming to a specific level requires limiting cumulative CO₂ emissions, reaching at least net zero CO₂ emissions”



THE TAKE HOME MESSAGES

- Advent Energy proposes to drill a gas exploration well, Sea Blue-1, in the offshore Sydney Basin.
- The exploration lease (PEP 11) is located close to the Newcastle-Hunter region - and major emission sources which will need to be cut if NSW is to meet its target of NET Zero by 2050.
- CCS is a key technology option to do this - and maintain an industrial base.
- There is presently no confirmed onshore geological storage site in NSW
- The offshore Sydney Basin has storage potential but has never been definitely evaluated due to lack of well data
- Sea Blue- 1 will provide the opportunity to cost-effectively assess CO2 storage potential.



ADVENT ENERGY LIMITED

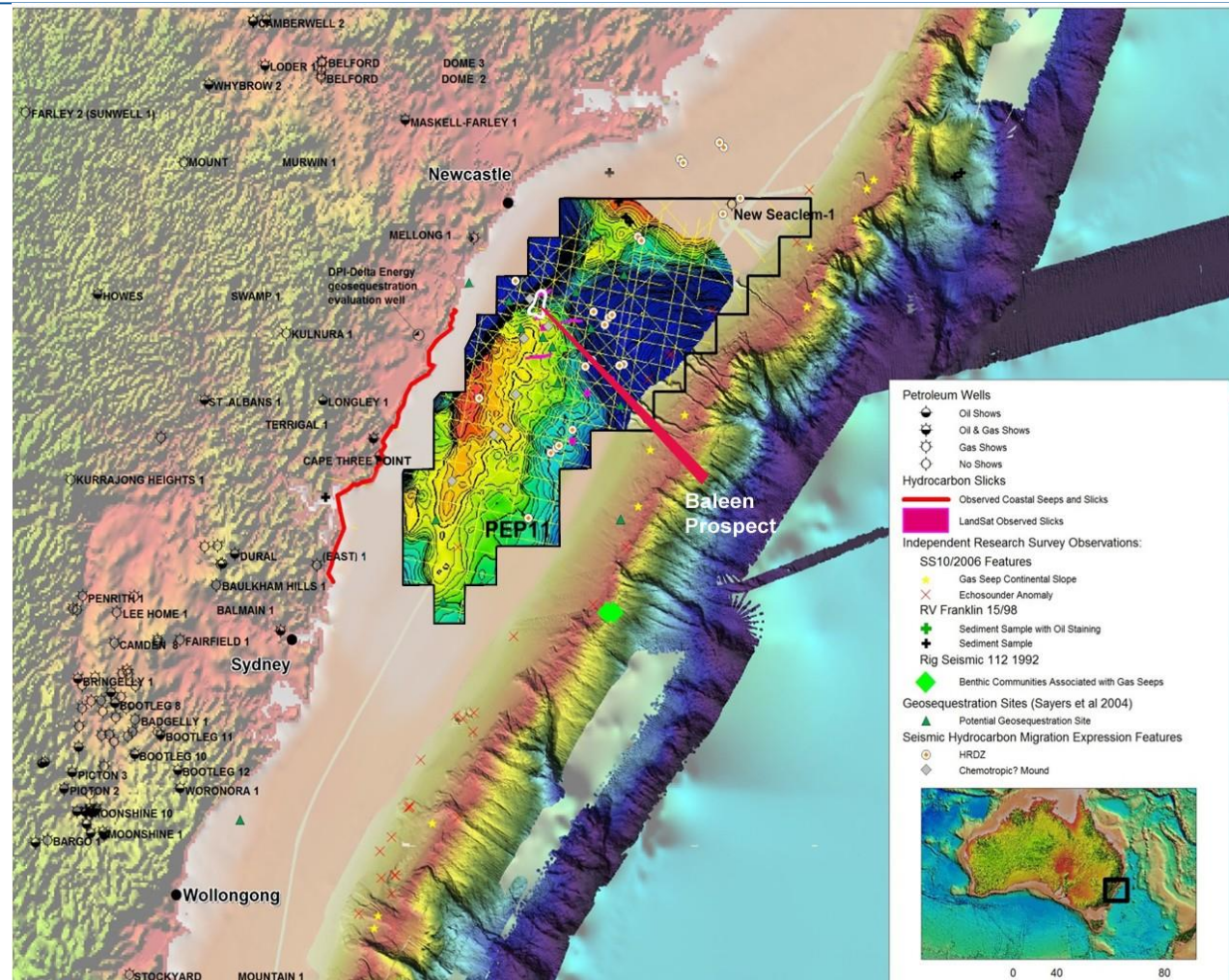
The Advent Gas Project



PEP11-85% Interest

PEP11– Offshore Sydney Basin:

- The Sydney Basin has excellent potential for discovery of natural gas
- PEP11 covers 4,649 km² on the doorstep of Sydney-Newcastle & extensive gas infrastructure (<50km).
- Current application to NOPTA to enable drilling as next step
- Significant interest in the project is driven by the gas market dynamics Shortfall forecast in gas supply east coast
- New gas fired power stations for NSW firming generation under consideration by power industry.
- All this has provided the impetus to Advent and its partners to propose a gas exploration well, Sea Blue -1.



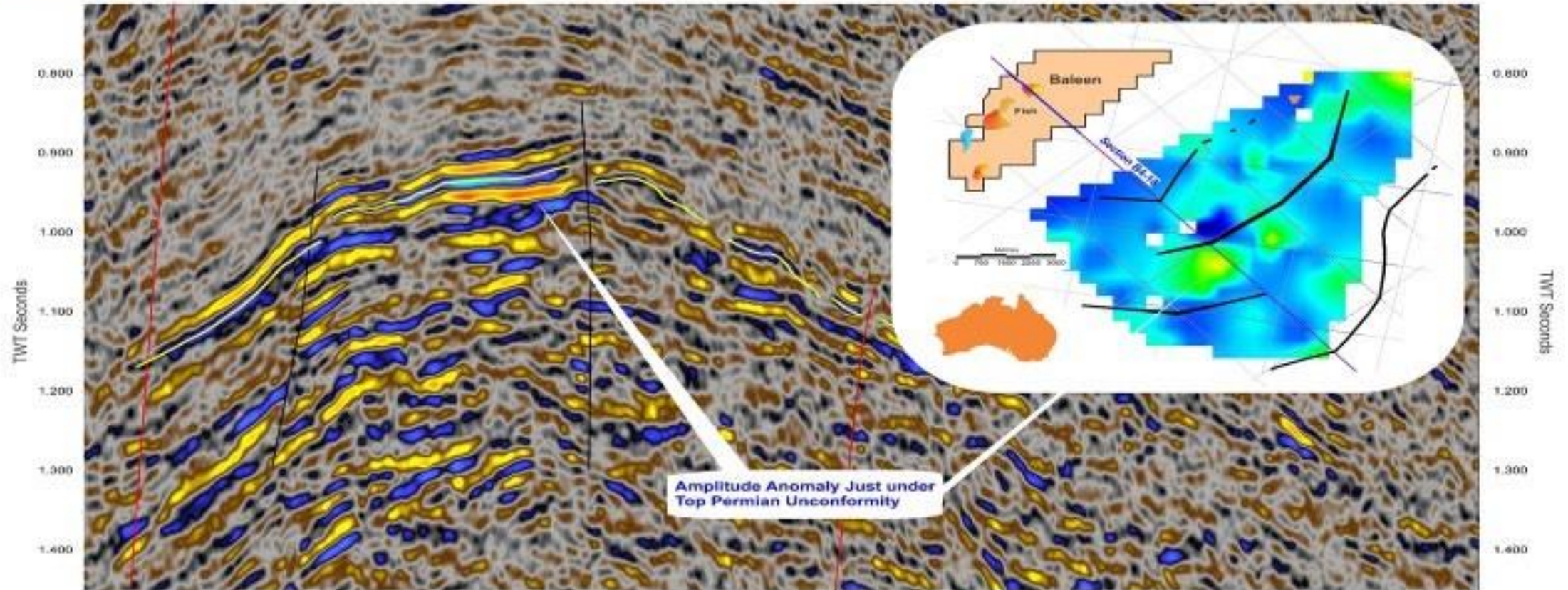
PEP 11 Permit Boundary -Black Outline

5



PEP 11 Baleen Anticline AVO Anomaly

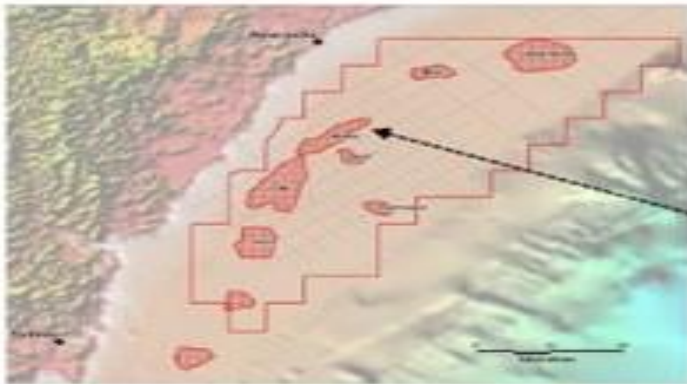
ADVENT ENERGY LIMITED



De risking target - Distinct amplitude (AVO) anomaly, phase change along strike and brightens with offset

The Advent Energy gas proposal

PEP11 Project



PEP11 Prospects & Leads



Illustrative graphic only – actual development plan may differ

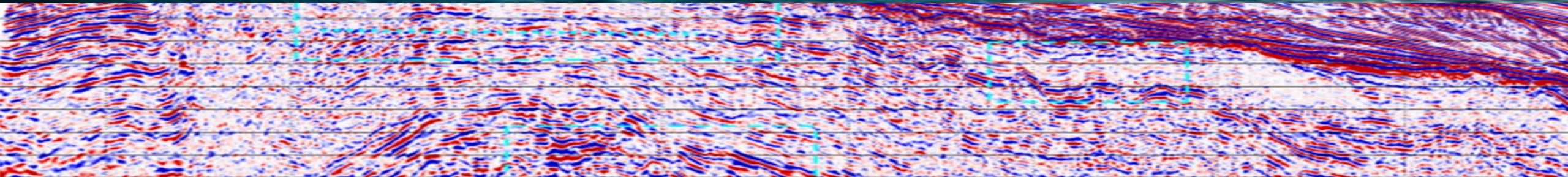


Collongra / Munmorah Power Plant Precinct;
Prospective Gas Processing Plant Location



Newcastle Port;
Prospective Gas Processing Plant Location

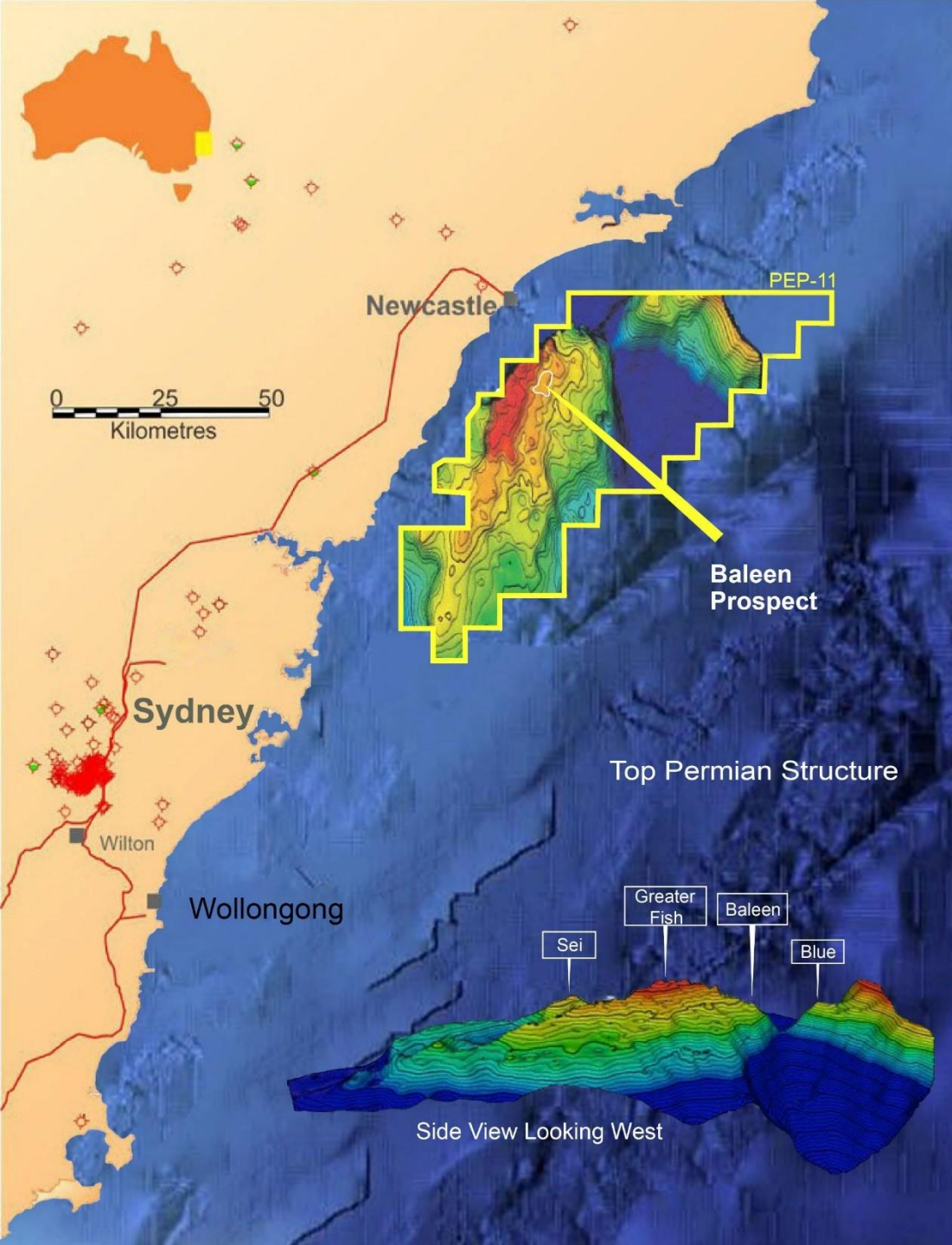
The Advent Carbon Storage Project



NET ZERO PATHWAY: CCS and Natural Gas

- Many of the same geological and engineering principles apply to carbon dioxide and methane so it is “familiar territory”
- CCS has been applied commercially by the gas industry since 1995 at Sleipner
- Depleted gas reservoirs offer one of the most promising storage targets for long term geological storage of CO₂ as they have a proven seal.
- It is also possible to use CO₂ as a “displacing agent” to help recovery and achieve enhanced gas recovery (EGR).
- In principle, EGR with CO₂ can be applied at various stages during gas production
- Gas is less carbon intensive than coal, but the gas industry recognises it still produces CO₂ which needs to be mitigated
- The future production of ‘blue’ hydrogen from gas will have to incorporate CCS





The proposed CCS Project

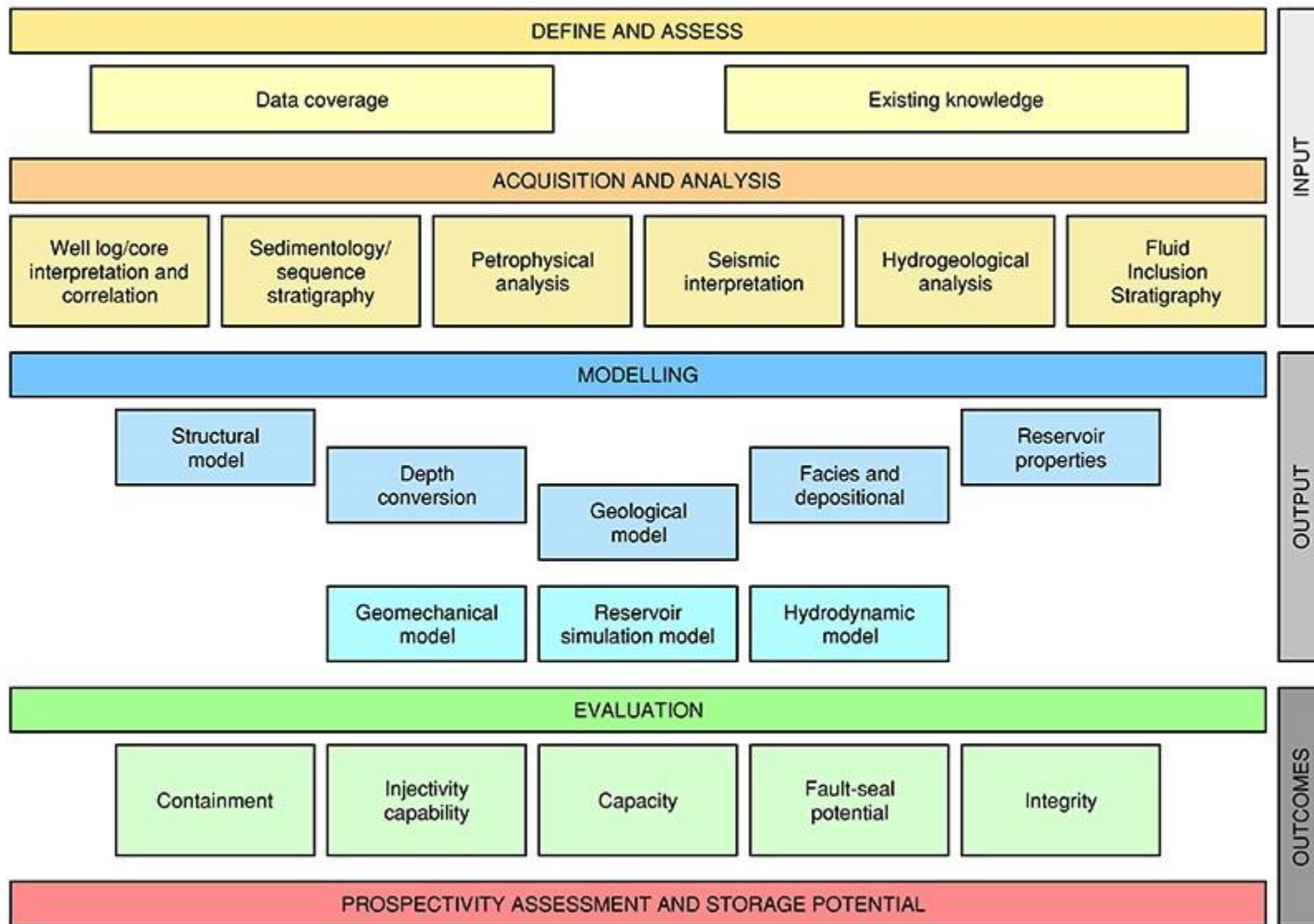
Factors in decisions regarding storage potential

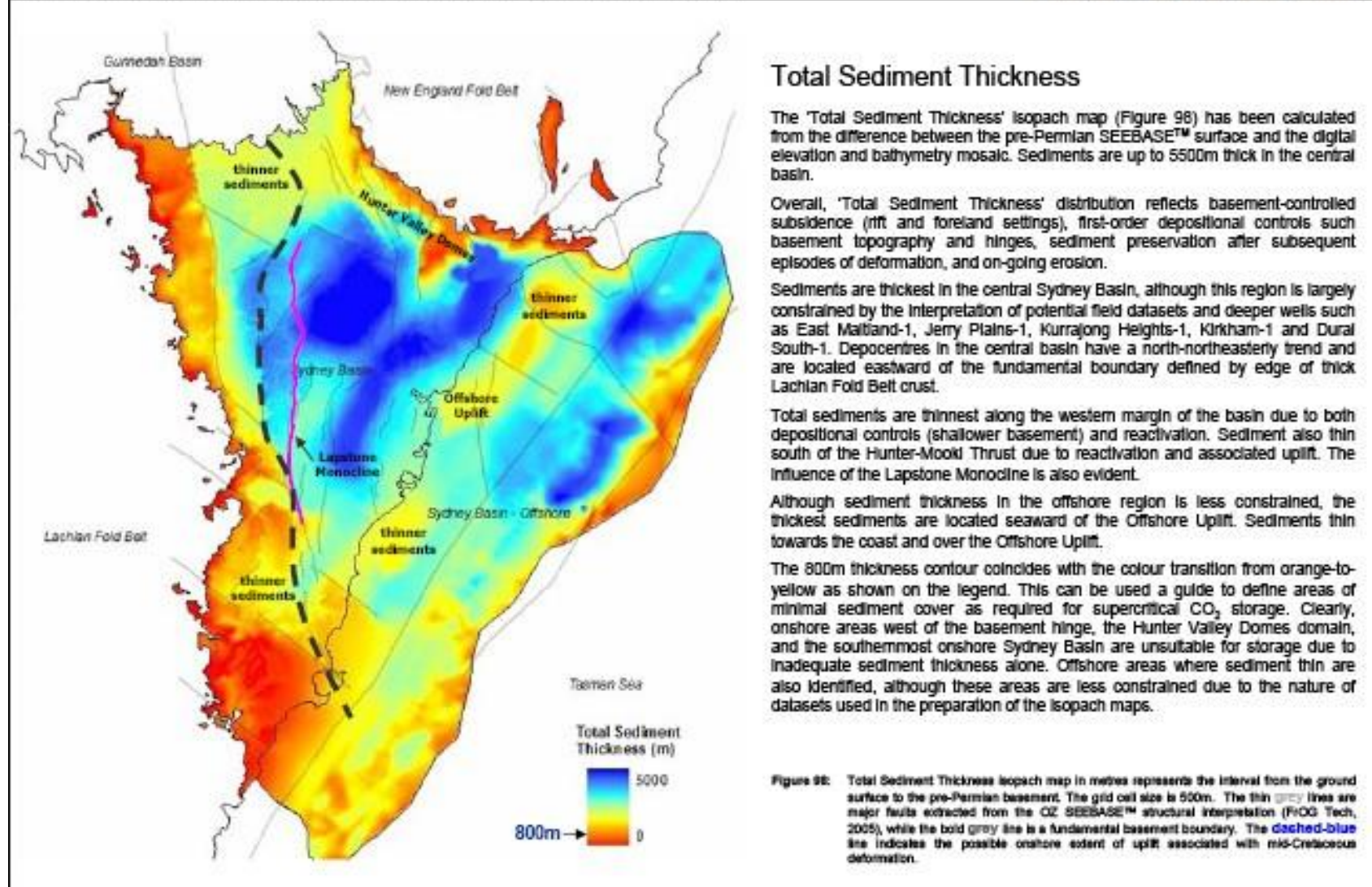
- **Geology**
- **Data availability and prior knowledge**
- **Regulatory regime and lease conditions**
- **Location: distance from major emission sources**
- **Scale of the CO2 emissions**
- **Logistics of the site: existing infrastructure**
- **Environmental impact**
- **Resource impacts and synergies eg gas; present and future**
- **Community acceptance**
- **Politics of climate change**

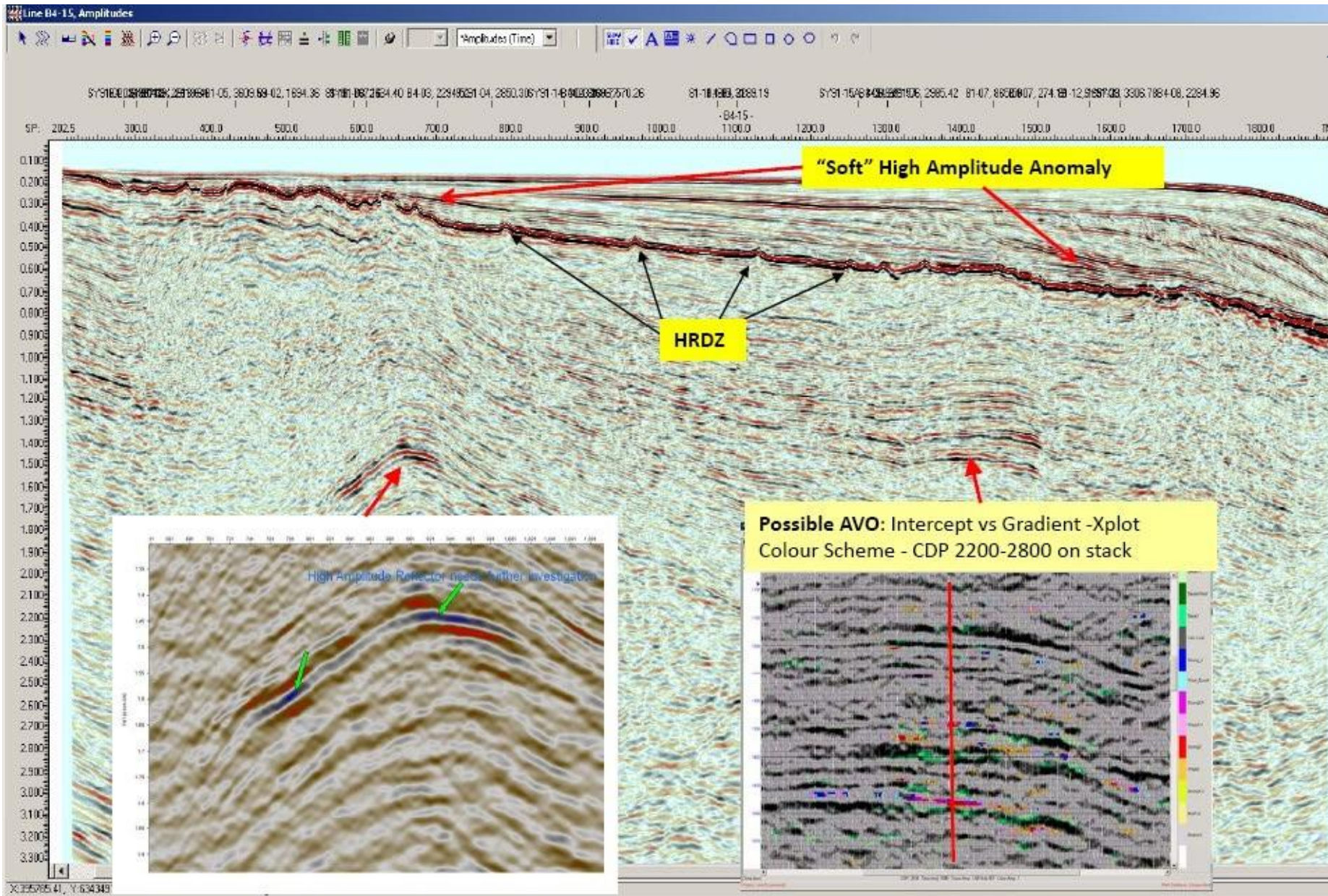
- **Cost**

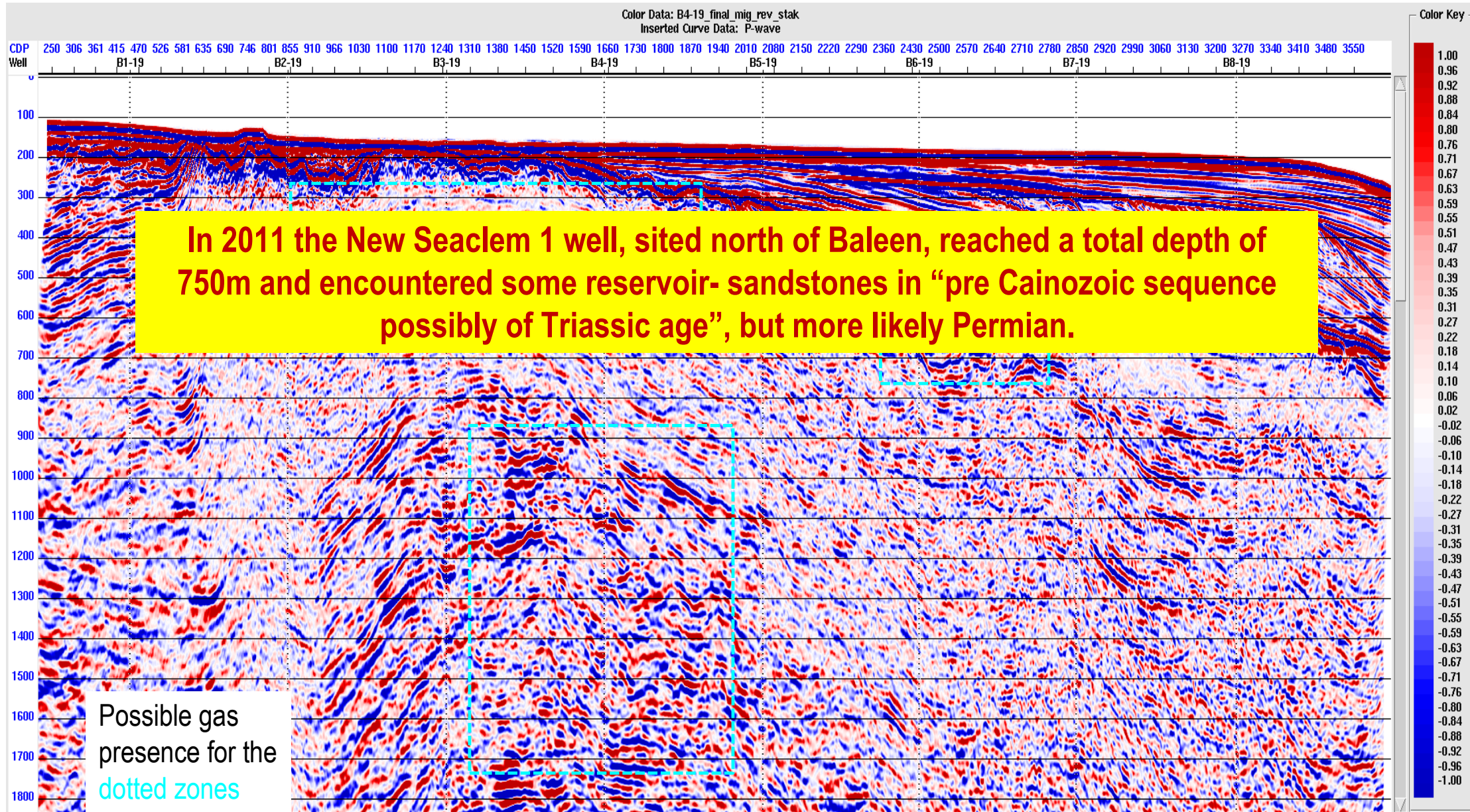
Workflow for the Petrel Sub-basin CO₂ storage study

GA, 2014

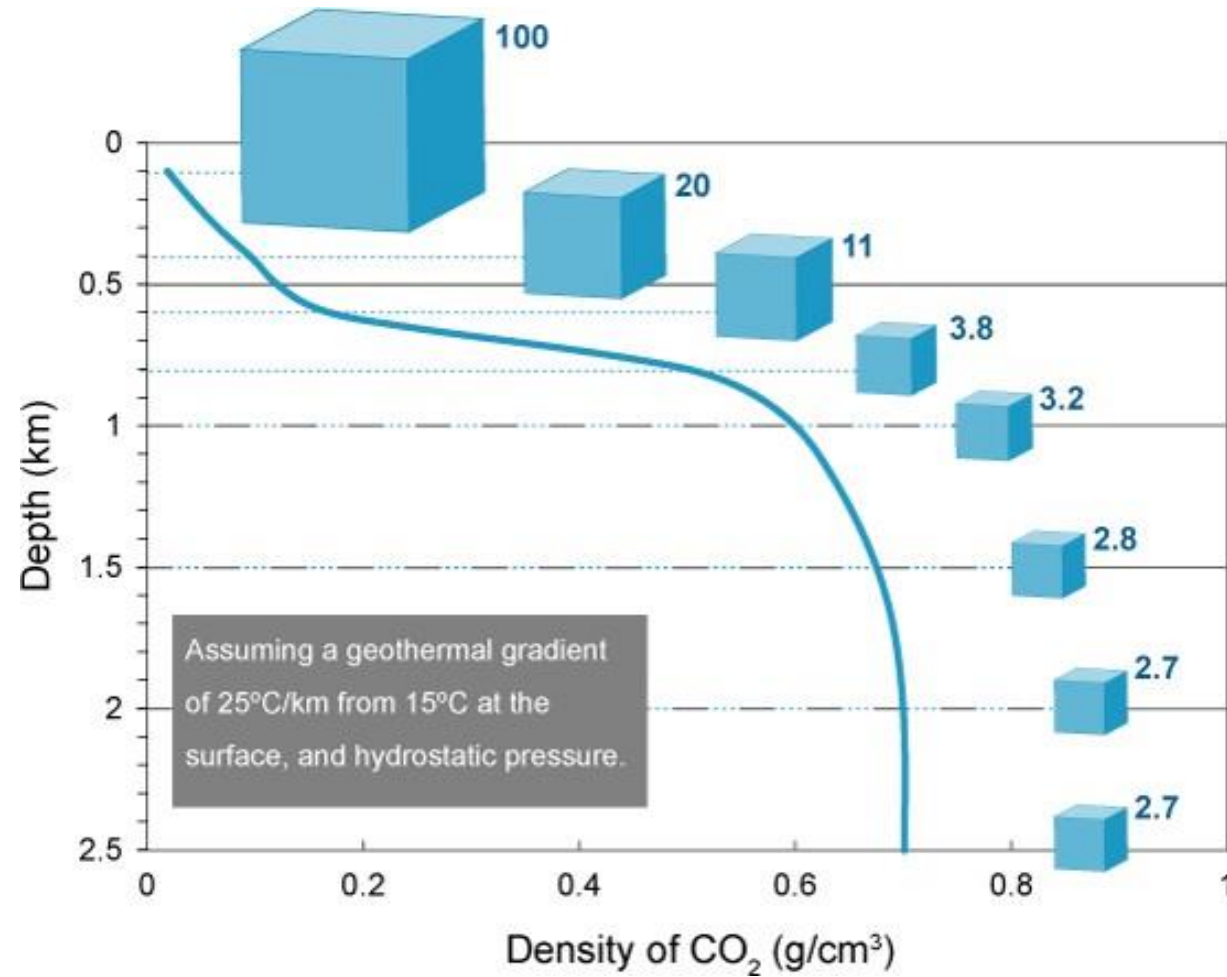




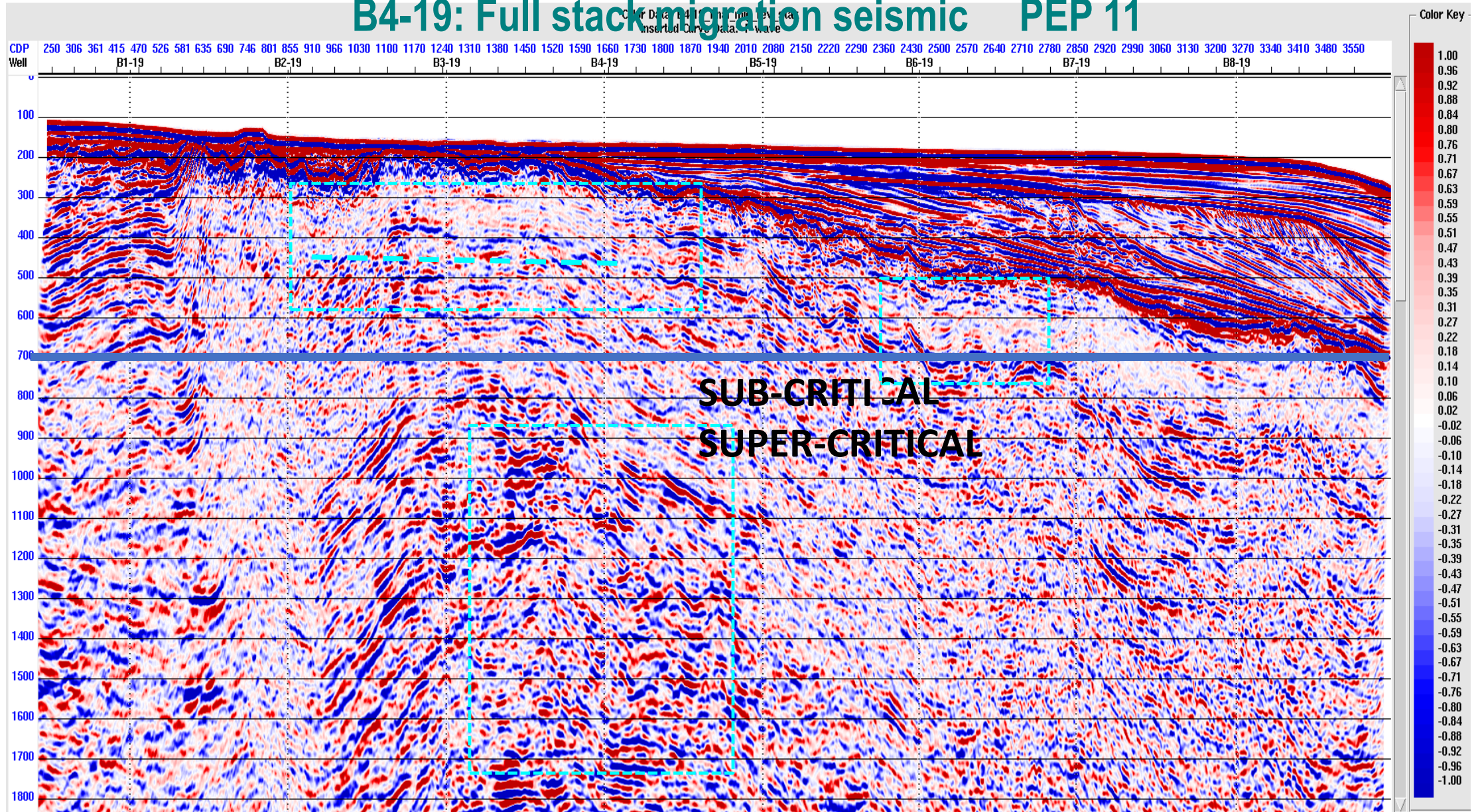




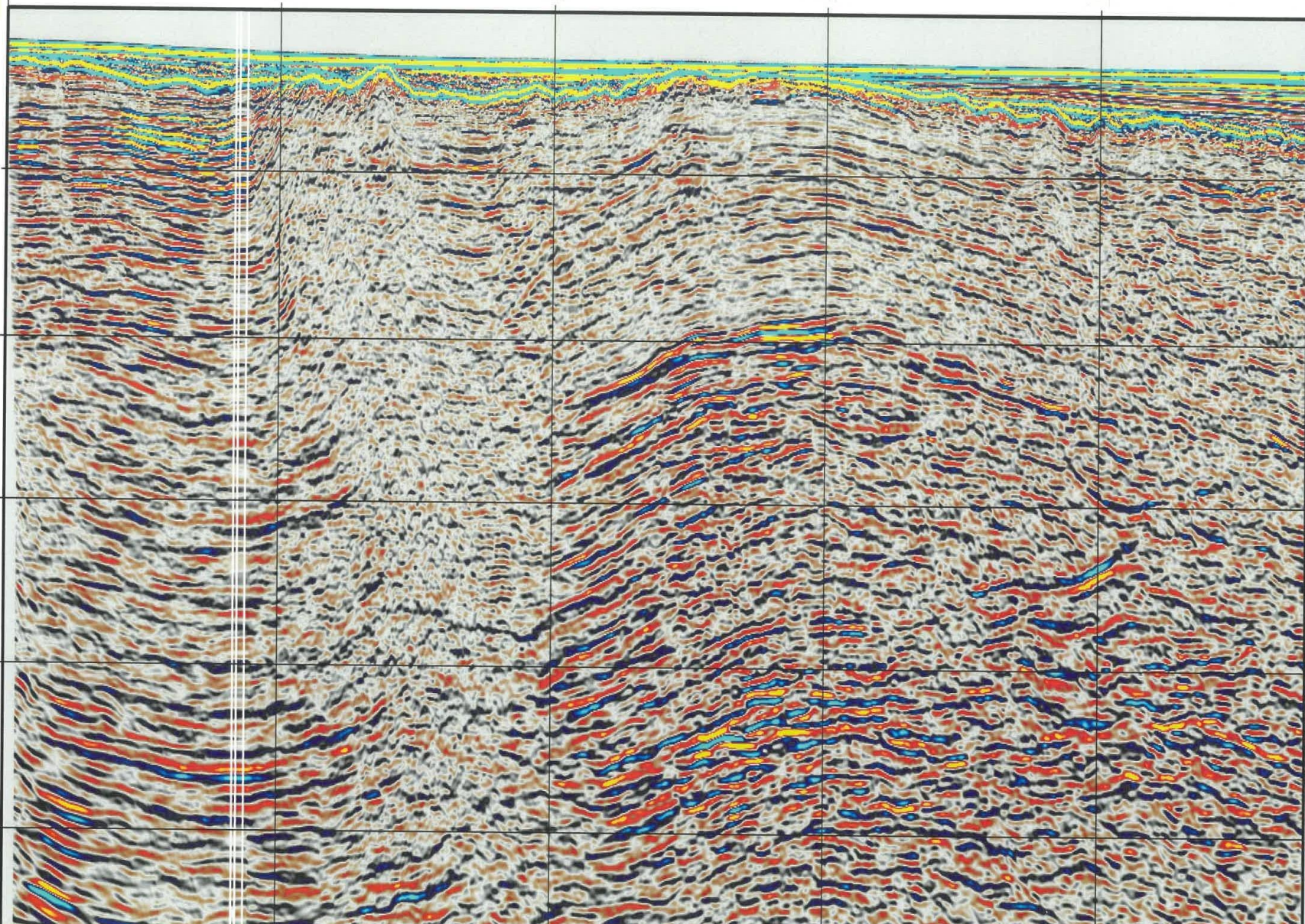
Variation of CO₂ density with depth, assuming hydrostatic pressure and a geothermal gradient of 25°C/km from 15°C at the surface



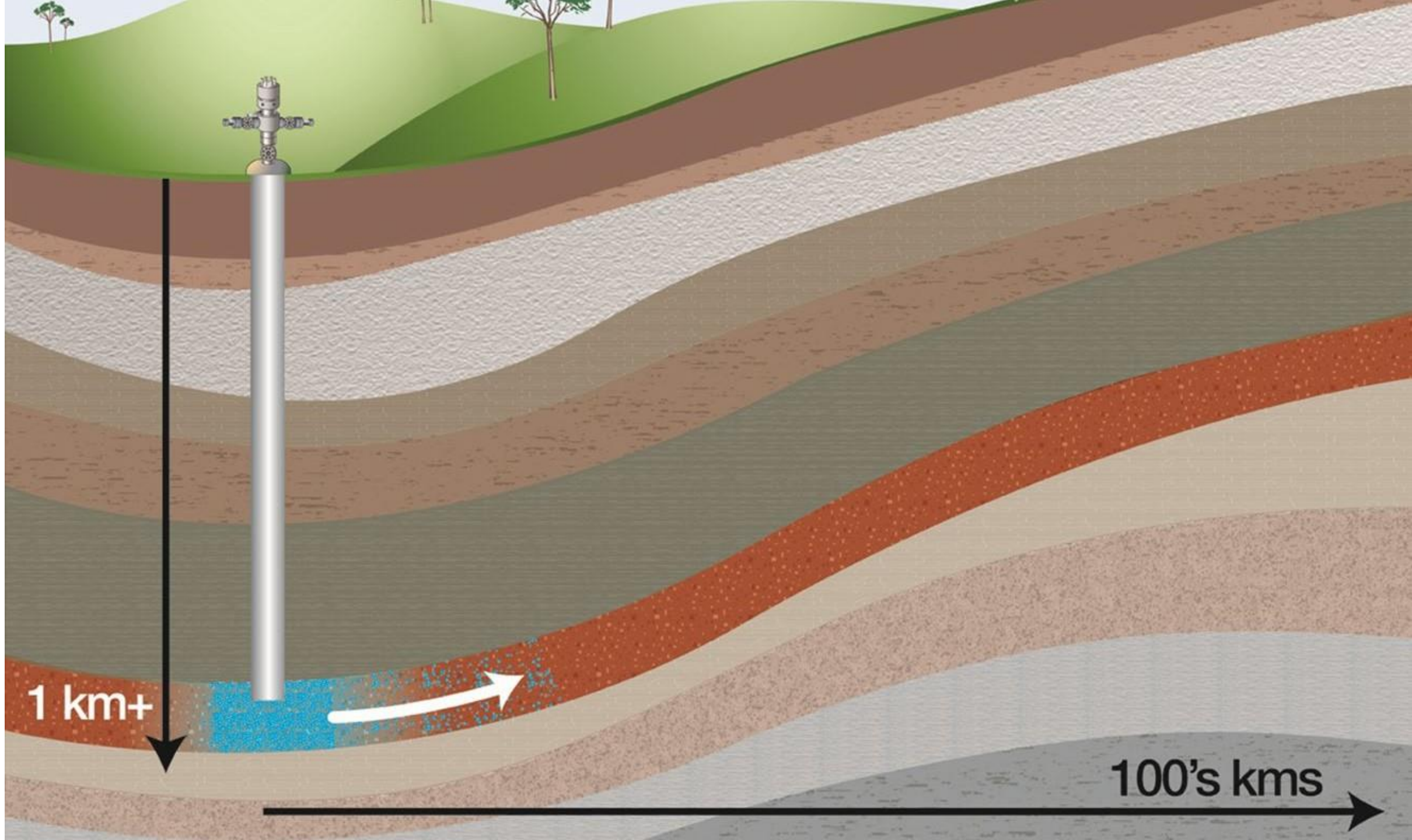
B4-19: Full stack migration seismic PEP 11

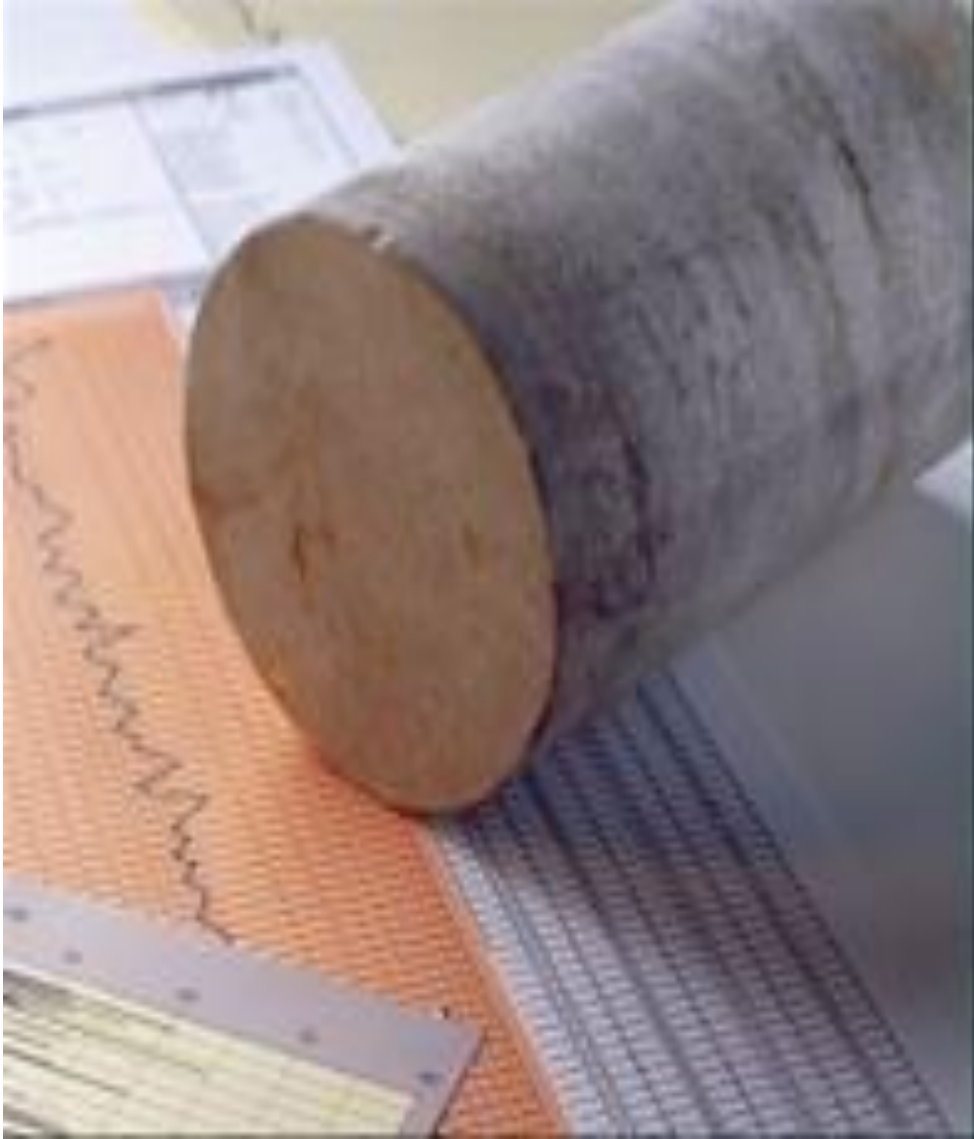


Possible gas
presence for the
dotted zones



Line B4 1 (Time 3.0s)





Sea Blue 1 Well

30km offshore; water depth approx. 150m

Target 2100m but potential to go to 3000m

Outstanding opportunity to obtain storage data

Conventional coring cost > \$1 million per core, and current subsurface data not adequate for developing a coring programme.

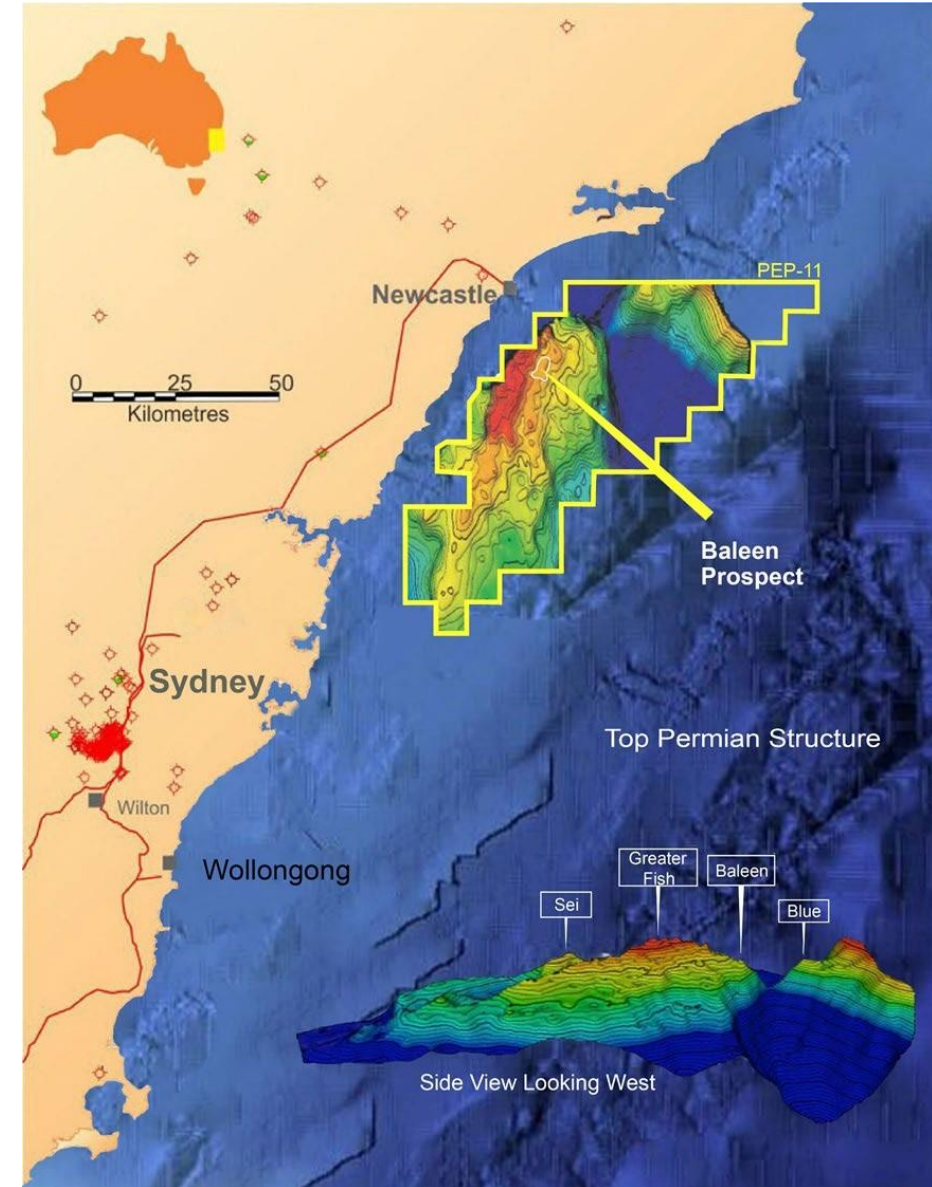
Proposal is to selectively use enhanced large diameter sidewall coring technology, once the well is drilled and logged

Can get up to 60 sidewall cores of 1.5 to 2.5 inch diameter in reservoirs and seals for determining storage potential

The proposed PEP 11 CCS Project

With Baleen and Sea Blue -1 as the starting point, what **additional** activities could be used to assess the carbon storage prospectivity of the offshore Sydney Basin?

- Sidewall cores of potential reservoirs and seals for extensive porosity and permeability measurements
- More comprehensive suite of well logs
- Deepen the well?
- Downhole testing of selected intervals?
- Reinterpret the 2D seismic using new core data
- Review use of OBN (Ocean Bottom Nodes) for enhanced seismic research and reservoir imaging?
- Comprehensive geomodelling post drilling
- Comprehensive dynamic modelling of possible CO₂ migration pathways
- Assessment of injectivity, capacity, security
- Financial feasibility
- Assess the future use of PEP 11 for CO₂ storage without and with a producing gas field





IN CONCLUSION

- Advent Energy proposes to drill a gas exploration well, Sea Blue-1, in the offshore Sydney Basin.
- The exploration lease (PEP 11) is located close to the Newcastle-Hunter region - and major emission sources which will need to be cut if NSW is to meet its target of NET Zero by 2050.
- CCS is a key technology option to do this - and maintain an industrial base.
- There is presently no confirmed onshore geological storage site in NSW
- The offshore Sydney Basin has storage potential but has never been definitely evaluated due to lack of well data
- Sea Blue- 1 will provide the opportunity to cost-effectively assess CO2 storage potential.



Disclaimer and Important Information

- ▶ This company presentation (the “Company Presentation”) of Advent Energy Limited (the “Company”) has been prepared by the Company solely for information purposes and for the sole use of the person to whom it is delivered. The Presentation is prepared for discussion purposes only. The Presentation does not constitute, and should not be construed as, any offer or invitation or recommendation to buy or sell any of the securities mentioned or described herein. The presentation and its contents are strictly confidential and may not be reproduced or redistributed, in whole or in part, to any other person than the intended recipient. The distribution of it and any offering, subscription, purchase or sale of securities issued by the Company may in certain jurisdictions (including but not limited to USA, Canada, Japan, Australia and Hong Kong) be restricted by law. Applications for shares (if any) will only be considered on the terms of the final application terms if and when issued. This Company Presentation has not been and will not be reviewed or registered with any public authority or stock exchange.
- ▶ This Company Presentation and the information contained herein is strictly confidential and may not be distributed, reproduced or used, in whole or in part, without the consent of the Company and may not be used for any purpose other than the evaluation of the business of the Company by the person to whom this Company Presentation is delivered.
- ▶ The Company does not make any representation or warranty (whether express or implied) as to the correctness or completeness of the information contained herein, & the Company nor any of its respective parent or subsidiary undertakings or any such person’s affiliates, directors, employees, representatives or advisors assume any liability connected to the Company Presentation and/or the statements herein.
- ▶ The contents of this Company Presentation are not to be construed as financial, legal, business, investment or tax advice. Each recipient should consult with its own financial, legal, business, investment and tax advisers as to financial, legal, business, investment and tax advice. By attending or receiving this Company Presentation you acknowledge that you will be solely responsible for your own assessment of the market and the market position of the Company and that you will conduct your own analysis & be solely responsible for forming your own view of the potential future performance of the Company’s business & an investment in the Company. An investment in the Company involves significant risks, & several factors could cause the actual results, performance or achievements of the Company to be materially different from any future results, performance or achievements that may be expressed or implied by information in this Company Presentation.
- ▶ Included in this Company Presentation are various “forward-looking statements”, including but not limited to statements regarding the intent, opinion, belief or current expectations of the Company and/or its management with respect to, among other things, (i) goals and strategies, (ii) plans for new business development, (iii) marketing plans and the Company’s target markets, (iv) evaluation of the Company’s markets, competition and competitive position, and (v) trends which may be expressed or implied by financial or other information or statements contained herein. Such forward-looking statements are not guarantees of future performance and involve known and unknown risks, uncertainties and other factors that may cause the actual results, performance and outcomes to be materially different from any future results, performance or outcomes expressed or implied by such forward-looking statements.
- ▶ The distribution of this Company Presentation and the offering, subscription, purchase or sale of shares, issued by the Company in certain jurisdictions is restricted by law. Persons into whose possession this Company Presentation may come are required to inform themselves of and to comply with all applicable laws and regulations in force in any jurisdiction in or from which it invests or receives or possesses this Company Presentation and must obtain any consent, approval or permission required under the laws and regulations in force in such jurisdiction, and the Company shall not have any responsibility or liability for these obligations. This Presentation does not constitute an offer to sell or a solicitation of an offer to buy any securities in any jurisdiction to any person to whom it is unlawful to make such an offer or solicitation to in such jurisdiction. The Company’s Securities have not been and will not be registered under the U.S. Securities Act of 1933, as amended (the “Securities Act”) or the securities laws of any state of the United States.
- ▶ The Company Presentation is made and reflects views as of June 2021. As a recipient of the Company Presentation, you accept that the information contained herein may be subject to changes. The Company does not intend, and does not assume any obligation, to update or correct any information included in this Company Presentation.
- ▶ This Company Presentation is subject to Australian law. Any dispute arising from this Company Presentation is subject to the jurisdiction of the Australian courts.



Thank you