

# Completion of Aircore Drilling at Tyrells and Hodges Prospects

ASX  
ANNOUNCEMENT  
23 August 2021

## CORPORATE DIRECTORY

NON EXECUTIVE CHAIRMAN  
Terry Streeter

MANAGING DIRECTOR  
Shane Sadleir

COMMERCIAL DIRECTOR  
Ralph Winter

NON EXECUTIVE DIRECTOR  
Adrian Larking

COMPANY SECRETARY  
Ralph Winter

ASX: MOH

CORPORATE ADDRESS  
L11/216 ST GEORGES TCE  
PERTH 6000

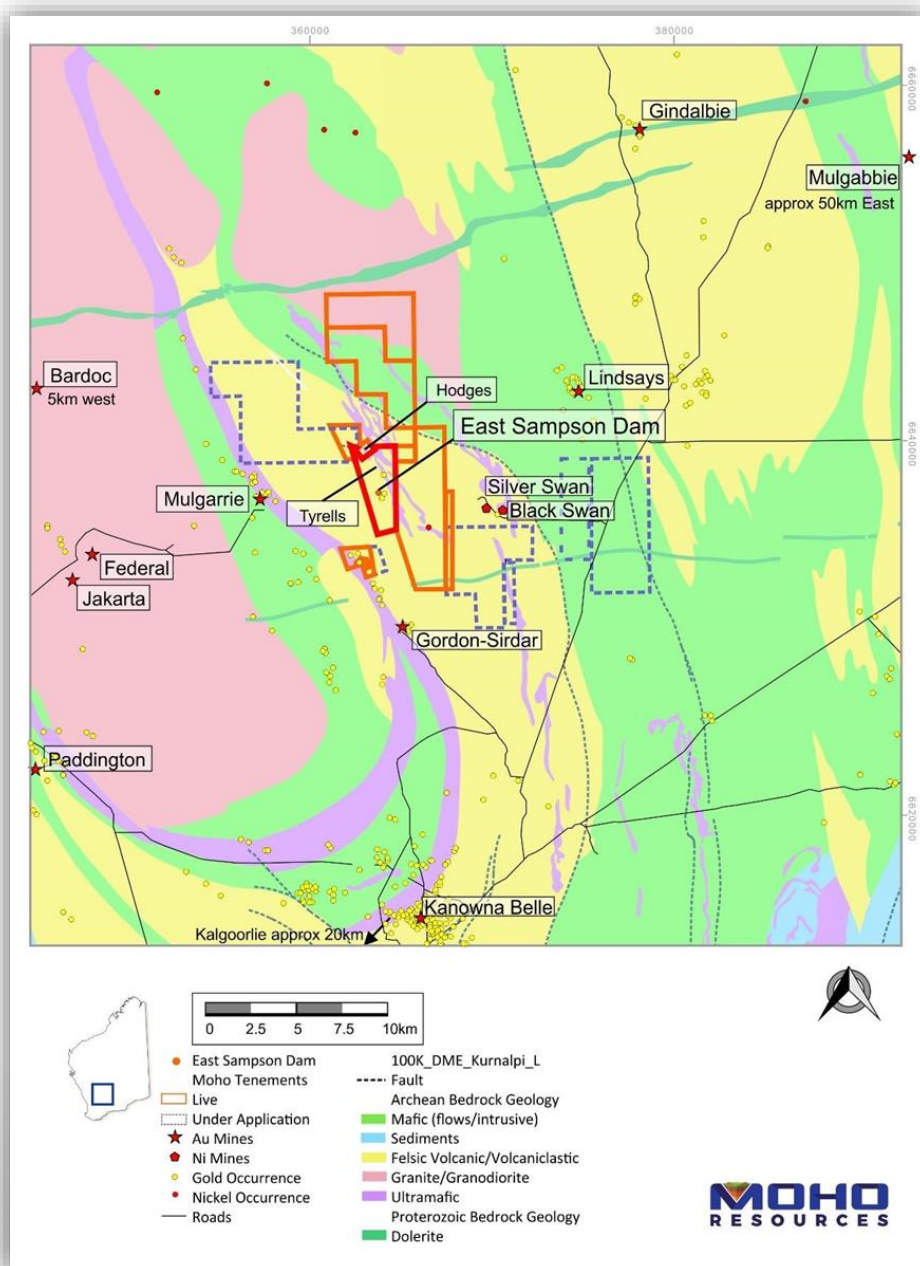
T +61 (08) 9481 0389  
+61 (08) 9463 6103

E [admin@mohoresources.com.au](mailto:admin@mohoresources.com.au)

[mohoresources.com.au](http://mohoresources.com.au)

## HIGHLIGHTS:

- Initial aircore drill program completed at Tyrells and Hodges gold prospects at Silver Swan North Project
- 158 aircore holes drilled for 7,659m to test gold-in-soil auger anomalies north of East Sampson Dam
- All samples have been submitted to laboratory; assays expected in Q4 2021



**Figure 1: Location of Tyrells and Hodges prospects in relation to East Sampson Dam gold deposit and Silver Swan North Project tenements and regional geology**

*We look forward with great anticipation to receipt of the assay results from this first systematic drill program at Tyrells and Hodges. Any significant gold mineralisation identified here should be viewed in the context of Moho's nearby 100% owned JORC mineral resource at East Sampson Dam announced in July 2021*

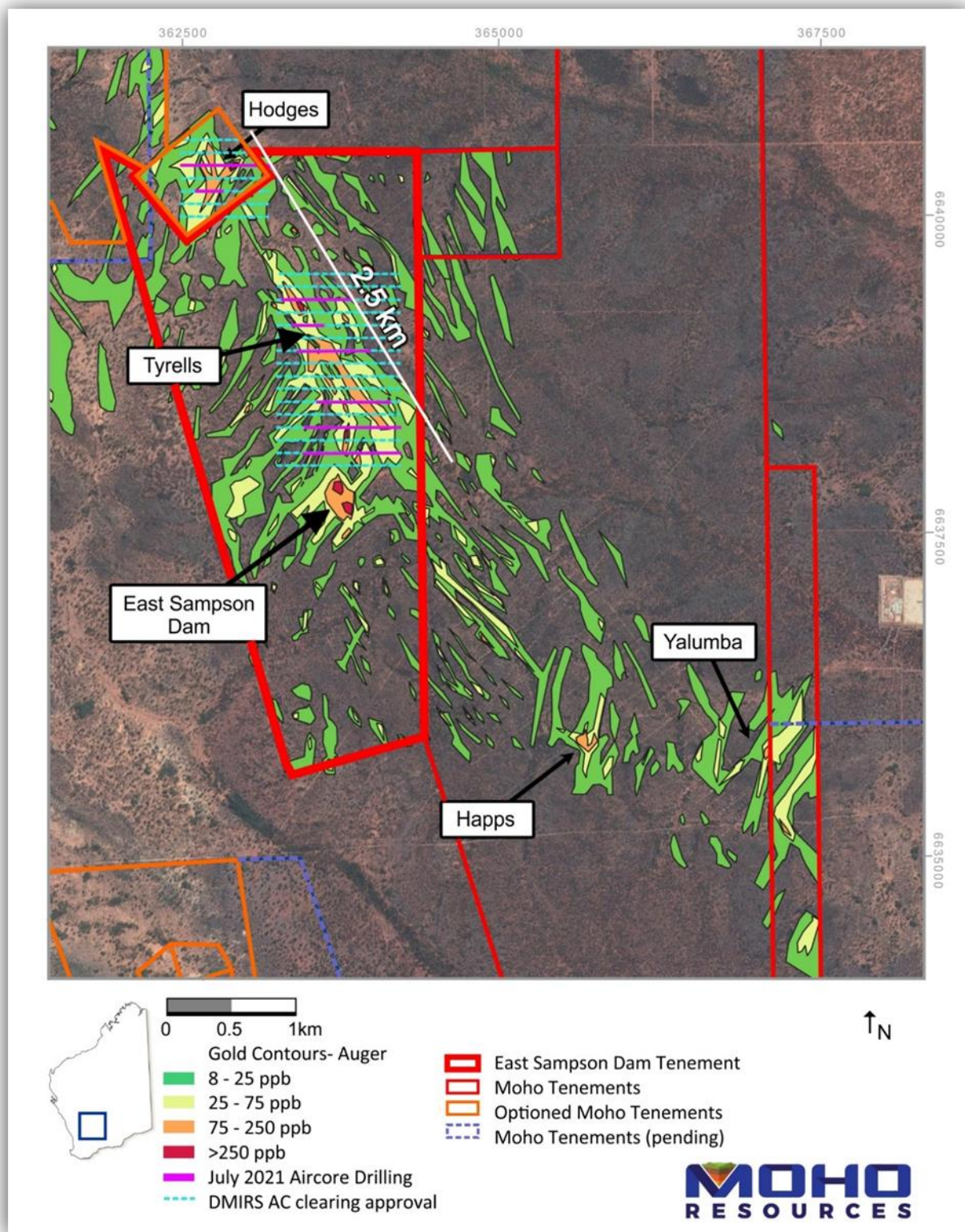
*- Mr Shane Sadleir, Moho Managing Director*



**Figure 2: Aircore drilling sample layout at Tyrells**

158 aircore holes for 7,659m (Figure 3) were completed and all holes were geologically logged with lithology, alteration and veining recorded. Magnetic susceptibility readings were taken every metre down hole.

Samples were collected every metre and 4-metre composite samples submitted for gold analysis, with the final metre of each hole also sampled and submitted for gold and a suite of base metal and pathfinder elements. Multiple lithologies and alteration were encountered by the drilling which covered a 2.5km strike length of gold anomalism.



**Figure 3: Location of Aircore drillhole traverses, Tyrells and Hodges prospects on aeromagnetics(1vd)**

**Next steps at Silver Swan North Project**

- Receive assays from current aircore campaign – Q3/4 2021
- Appointment of mining engineer to commence Scoping Study with the aim to progress mine development at East Sampson Dam gold deposit (ESD) using toll milling facility – Q3 2021
- Completion of ESD Scoping Study – H2 2021
- RC drill program at ESD to test extensions of mineralisation along strike to north and south and at depth - H2 2021
- Aircore drill program to test multiple gold-in-soil anomalies at Silver Swan North Project, including at Happs and Yalumba prospects southeast of ESD – H1 2022 Can these prospects be included in the overall location map?
- Review Silver Swan North nickel potential and prepare exploration program – H2 2021

**Moho's Interest in Silver Swan North Tenements**

Moho is the 100% registered owner of granted tenements M27/263, E27/528, E27/613, E27/626, P27/2232, P27/2390 and applications for E27/623, E27/633, E27/641, E27/650, P27/2441 and P27/2456. The Company has also recently entered into option agreements to purchase 100% of M27/488, P27/2229, P27/2200, P27/2226, and P27/2216-8.

**East Sampson Dam Mineral Resource Estimate by classification at a 0.5g/t Au cut-off (July 14 2021)**

Domain	Class	Tonnes (kt)	Au g/t	Au Metal (koz)
OXIDE	Indicated	68.4	2.3	5.0
	Inferred	14.4	3.2	1.5
	<b>Total</b>	<b>82.9</b>	<b>2.4</b>	<b>6.4</b>
LOWER SAPROLITE	Indicated	81.7	2.0	5.3
	Inferred	34.5	3.3	3.6
	<b>Total</b>	<b>116.2</b>	<b>2.4</b>	<b>9.0</b>
TRANSITION	Indicated	29.0	3.4	3.2
	Inferred	18.2	3.9	2.3
	<b>Total</b>	<b>47.2</b>	<b>3.6</b>	<b>5.5</b>
FRESH	Indicated	6.6	1.3	0.3
	Inferred	11.8	1.2	0.5
	<b>Total</b>	<b>18.4</b>	<b>1.2</b>	<b>0.7</b>
TOTAL	Indicated	185.7	2.3	13.8
	<b>Inferred</b>	<b>78.9</b>	<b>3.1</b>	<b>7.8</b>
	<b>Total</b>	<b>264.6</b>	<b>2.5</b>	<b>21.6</b>

*Note: Data is reported to significant figures and differences may occur due to rounding.*

**Compliance Statement**

*With reference to previously reported Exploration results and mineral resources, the company confirms that it is not aware of any new information or data that materially affects the information included in the original market announcement and, in the case of estimates of Mineral Resources or Ore Reserves that all material assumptions and technical parameters underpinning the estimates in the relevant market announcement continue to apply and have not materially changed. The company confirms that the form and context in which the Competent Person's findings are presented have not been materially modified from the original market announcement.*

**ABOUT MOHO RESOURCES LTD**

Moho Resources Ltd is an Australian mining company which listed on the ASX in November 2018. The Company is focused on gold and nickel exploration at Empress Springs, Silver Swan North and Burracoppin.

Moho's Board is chaired by Mr Terry Streeter, a well-known and highly successful West Australian businessman with extensive experience in funding and overseeing exploration and mining companies, including Jubilee Mines NL, Western Areas NL and Midas Resources Ltd. Moho has a strong and experienced Board lead by geoscientist Shane Sadleir as Managing Director, Commercial Director Ralph Winter and Adrian Larking, lawyer and geologist, as Non-Executive Director.

Highly experienced geologist Lyndal Money (Technical Manager) is supported by leading industry consultant geophysicist Kim Frankcombe (ExploreGeo Pty Ltd) and experienced consultant geochemists Richard Carver (GCXplore Pty Ltd). Dr Jon Hronsky (OA) provides high level strategic and technical advice to Moho.

**ENDS**

The Board of Directors of Moho Resources Ltd authorised this announcement to be given to ASX.

**For further information please contact:**

Shane Sadleir, Managing Director  
T: +61 411 704 498  
E: [shane@mohoresources.com.au](mailto:shane@mohoresources.com.au)

Ralph Winter, Commercial Director  
T: +61 435 336 538  
E: [ralph@mohoresources.com.au](mailto:ralph@mohoresources.com.au)

**Media Relations**

David Tasker  
Chapter One Advisors  
T: +61 433 112 936  
E: [dtasker@chapteroneadvisors.com.au](mailto:dtasker@chapteroneadvisors.com.au)