

24 August 2021

The Company Announcements Office
Australian Stock Exchange Limited
4 Floor, 20 Bridge Street
SYDNEY, NSW 2000



Athena
Resources

ACN 113 758 900

BYRO BASE METALS PROJECT

GEOPHYSICAL GROUND GRAVITY SURVEY COMPLETED AT THE BYRO NI-CU-PGE PROJECT

Further to the announcement on 13 August 2021, Athena Resources Limited (the Company) (ASX:AHN) is pleased to announce the completion of Geophysical Gravity Surveys at the Company's 100% owned Byro Base Metal Project within its Byro tenements.

Atlas Geophysics have now completed the following infill Ground Bouguer Gravity surveys at the Moonborough and Milly Milly intrusions:

- The Moonborough infill survey was initially designed to include 232 stations. On completion of the survey a further 100 stations were included over anomalous areas requiring further infill for a total of 332 stations.
- The Milly Milly infill survey was initially designed to include 359 stations over two areas, the Conduit Target and the Western Contact with the second intrusion. On completion of the survey a further 62 stations were added over anomalous areas requiring further infill for a total of 421 stations.

All gravity survey data acquired has been quality assessed and is now being modelled and interpreted by Southern Geoscience Consultants. Results from data interpretation and modelling are anticipated to take approximately two weeks.

Athena Resources Limited

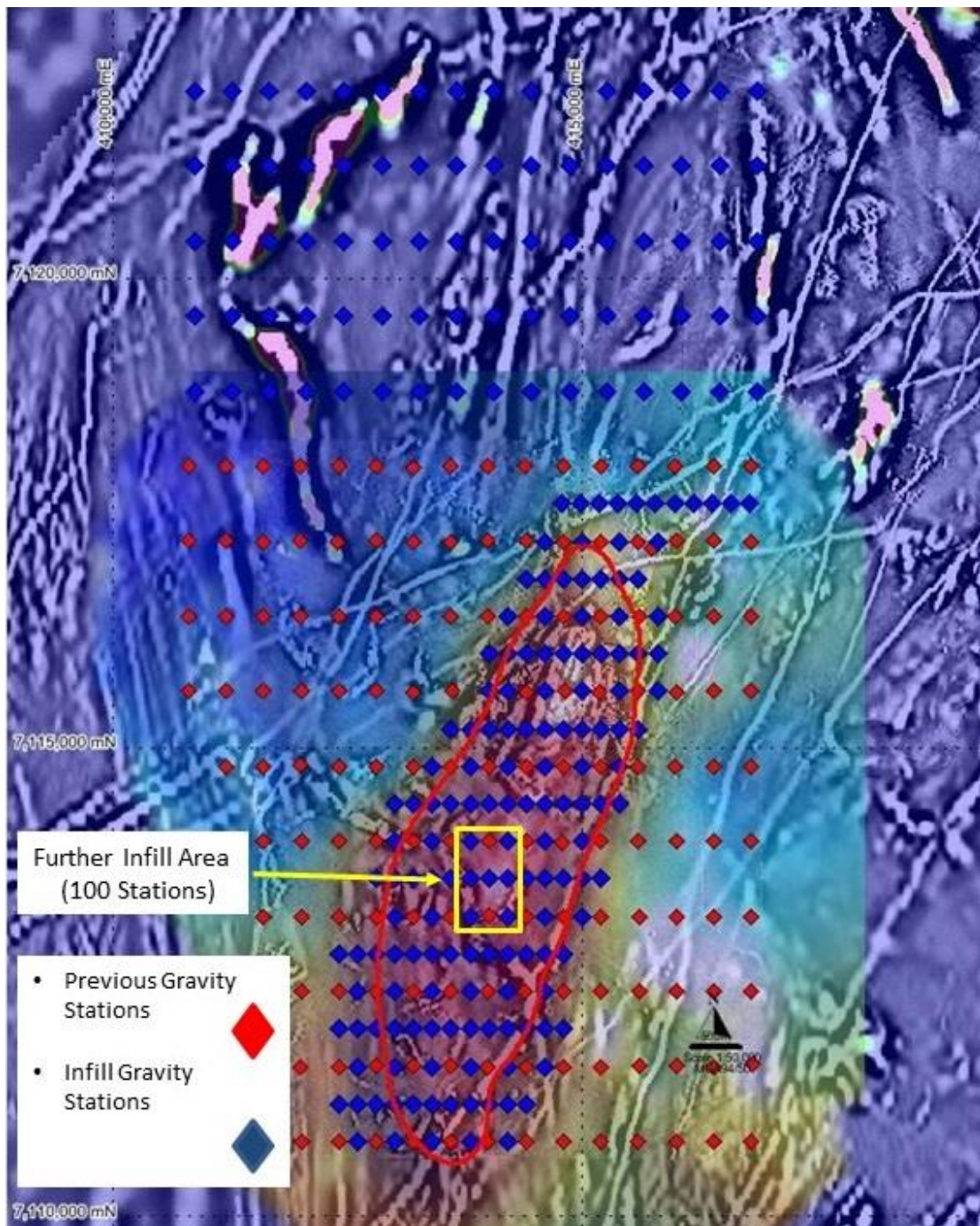


Figure 1. Moonborough gravity infill stations, (blue) and previous survey (red), on existing gravity and magnetic imagery with 100 added infill station within the yellow box.

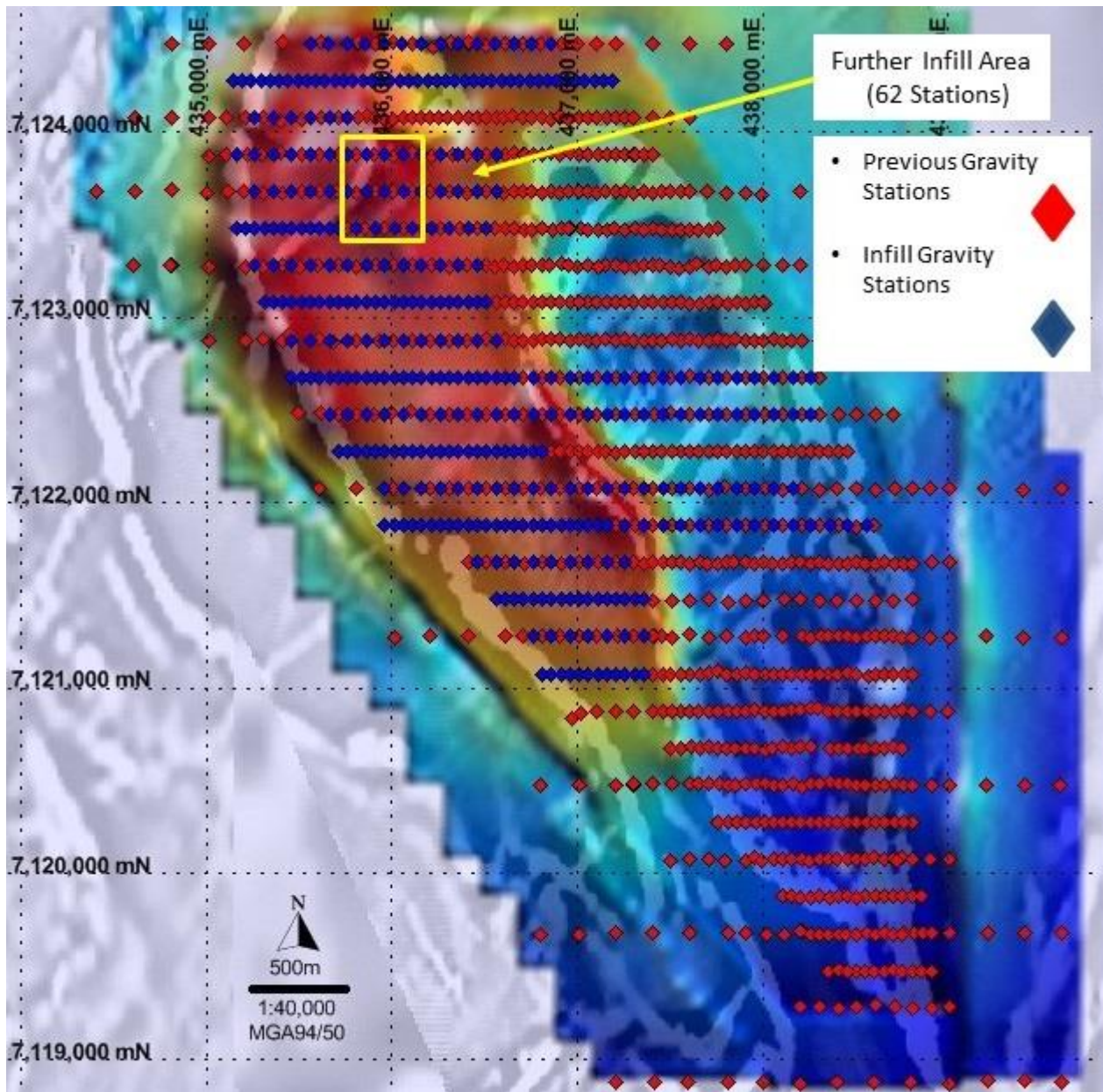


Figure 2. Milly Milly gravity infill stations, (blue) and previous survey (red), on existing gravity and magnetic imagery with 100 added infill station within the yellow box.



ABOUT ATHENA RESOURCES LIMITED

Athena Resources Limited (ASX:AHN), which is based in Perth was listed on the ASX in 2006 and currently has 793 million shares on issue. Athena owns a 100% interest in the Byro Project through its subsidiaries Complex Exploration and Byro Exploration where it is exploring for copper, nickel, PGE's and iron ore.

Regional Project Location



This announcement was authorised by the Board.

Yours faithfully

E W Edwards
Executive Director

Athena Resources Limited



INTERESTS IN MINING TENEMENTS

Athena Resources Limited 100%	Tenement Type
Byro Exploration	E – Exploration License
E09/1507	
E09/1552	
E09/1637	
E09/1781	
E09/1938	
Byro Project Mining	M - Mining Lease
M09/166	
M09/168	

CAUTIONARY NOTES AND DISCLOSURES

Disclosures

All data and Information of material nature referred to within this Report with reference to the Milly Milly and Moonborough intrusions have previously been reported on the ASX platform in compliance with the relevant JORC compliance reporting format at the time of data acquisition.

Cautionary Notes and Forward Looking Statements

This announcement contains certain statements that may constitute “forward looking statements”. Such statements are only predictions and are subject to inherent risks and uncertainties, which could cause actual values, results, performance achievements to differ materially from those expressed, implied or projected in any forward looking statements.

JORC Code Compliance Statement

Some of the information contained in this announcement is historic data that have not been updated to comply with the 2012 JORC Code. The information referred to in the announcement was prepared and first disclosed under the JORC Code 2004 edition. It has not been updated since to comply with the JORC Code 2012 edition on the basis that the information has not materially changed since it was last reported.

Athena Resources Limited



Competent Persons Disclosure

Mr Kelly is an employee of Athena Resources and currently holds securities in the company.

Competent Person Statement

The information included in the report was compiled by Mr Liam Kelly, an employee of Athena Resources Limited. Mr Kelly has had over twenty years' experience as a geologist in mining and exploration and is a Member of the Australasian Institute of Mining and Metallurgy, (306501). Mr Kelly has sufficient relevant experience in the styles of mineralisation and deposit styles under consideration to qualify as a Competent Person as defined in "The Australasian Code for Reporting of Exploration Results, Mineral Resources and Ore Reserves (JORC Code 2012 Edition)". The historical information included is compliant with the relevant JORC Code, 2004 Edition, and new information announced post that version of the JORC Code is compliant with the JORC Code 2012 Edition. Mr Kelly consents to the inclusion of the information in the report in the context and format in which it appears