

Tesoro continues to expand Ternerera with more wide gold intervals that include higher grade zones

96.15m @ 0.98g/t Au including 12.00m @ 4.78g/t Au

16.40m @ 2.35g/t Au including 2.00m @ 12.74g/t Au

- Tesoro receives assay results for 11 diamond drill holes from the Ternerera Gold Deposit as part of extensional and infill drilling program aiming to increase the existing 660,000oz maiden gold Mineral Resource.
- All holes intercepted gold mineralisation and confirmed multiple wide gold zones on the western and eastern margins of the deposit outside the existing Mineral Resource.
- Within these multiple wide gold zones thick higher grade gold zones are present.
- Intercepts include:
 - ZDDH0179: **47.00m @ 0.85g/t Au** from 338.00m including;
 - **10.50m @ 2.49g/t Au** from 338.00m; and
 - **4.00m @ 5.22g/t Au** from 347.00m.
 - ZDDH0180: **225.35m @ 0.64g/t Au** from 20.00m including;
 - **96.15m @ 0.98g/t Au** from 20.00m; and
 - **42.50m @ 1.65g/t Au** from 20.00m; and
 - **12.00m @ 4.78 g/t Au** from 50.50m.
 - **35.30m @ 1.03g/t Au** from 159.70m; and
 - **18.17m @ 1.41g/t Au** from 159.70m.
 - ZDDH0181A: **14.00m @ 2.07g/t Au** from 105.00m including;
 - **9.00m @ 2.81g/t Au** from 107.90m.
 - **16.40m @ 2.35g/t Au** from 204.60m including;
 - **2.00m @ 12.74g/t Au** from 216.00m.
 - **6.00m @ 2.03g/t Au** from 264.00m including;
 - **4.00m @ 2.79g/t Au** from 264.00m.
 - ZDDH0182: **39.20m @ 0.91g/t Au** from 310.70m including;
 - **11.40m @ 2.80g/t Au** from 310.70m.
 - ZDDH0183: **15.40m @ 0.97g/t Au** from 9.60m including;
 - **5.40m @ 2.57g/t Au** from 9.60m.
 - **13.00m @ 2.42g/t Au** from 106.00m including;
 - **8.40m @ 3.46g/t Au** from 108.60m.
- Results further define new shallow gold zones in the west and east of the deposit providing additional mineralisation for potential Mineral Resource expansion.
- Drilling is a combination of infill and extensional drilling at Ternerera, extensional drilling at Ternerera East and Drone Hill.

- Tesoro aims to complete an additional 15,000m drilling, with results for inclusion in the **Tenera Mineral Resource update expected Q4 CY2021**.
- 6 rigs drilling 24/7, assays remain outstanding for 43 diamond drill holes.

Tesoro Resources Limited (Tesoro or the Company) (ASX:TSO) is pleased to announce latest assay results from infill and extensional drilling at the Tenera Gold Deposit, located at the Company's El Zorro Gold Project (**El Zorro**) in Chile, where it is aiming to increase the existing Tenera Mineral Resource of 660,000oz gold (ASX announcement 28 July 2021).

Tesoro received assays for 11 diamond drill holes completed as part of the infill and extensional drilling program. All holes intercepted gold mineralisation, with wide gold zones intercepted outside of the existing Mineral Resource model. See Table 1 for results.

Tesoro Managing Director Zeff Reeves commented:

“Our confidence at Tenera continues to build as our drilling continues to show predictable, wide, well mineralised gold zones outside of the existing Mineral Resource. The more we drill, the more Tenera expands, demonstrating the potential of this emerging large-scale gold deposit at El Zorro and providing confidence that Tesoro is well on the way to providing a material Mineral Resource upgrade before year end. We believe this will demonstrate the potential of this emerging large-scale gold deposit at El Zorro.”

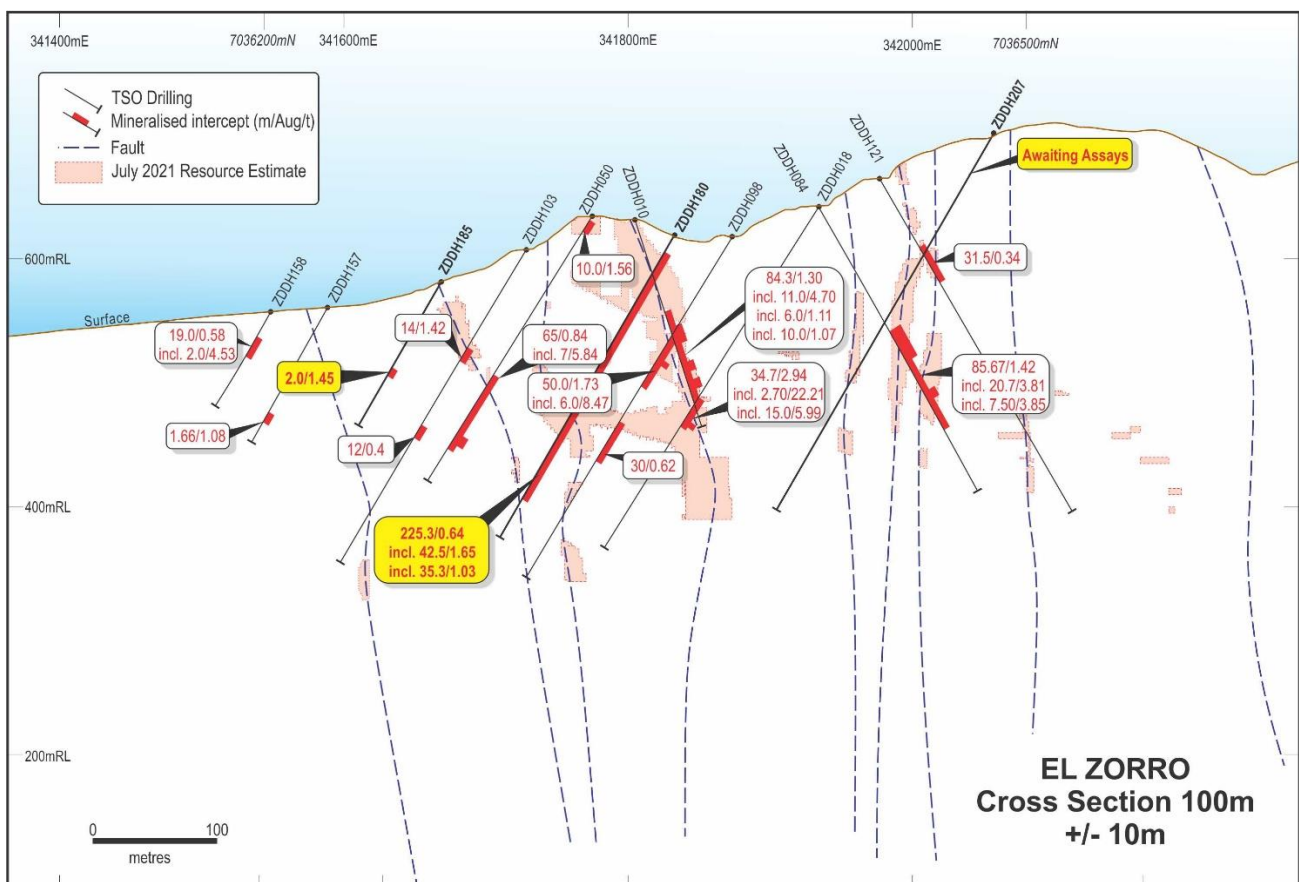


Figure 1: Tenera Drill Section +100m looking northwest. Hole ZDDH0180 showing continuous shallow gold mineralisation outside of the existing resource model envelope.

EXTENSIONAL DRILLING

Tesoro drilled holes ZDDH0182 and ZDDH0179 on the eastern margin of the Ternera deposit which returned significant gold intercepts that further extend and demonstrate up-dip and along strike continuity of gold mineralisation outside the existing Mineral Resource envelope.

Holes ZDDH0183, ZDDH0184, ZDDH0186, ZDDH0186 and ZDDH0187 are drilled along the western margin of the Ternera Gold deposit, all returned positive gold intercepts, further delineating a new gold zone outside the existing Mineral Resource model. This zone is now defined by drilling over 600m of strike, up to 50m wide and from surface to more than 250m depth and has the potential to add significant gold ounces.

INFILL DRILLING

Infill holes ZDDH0180 and ZDDH0181A were drilled in the central sector of the Ternera deposit with hole ZDDH0180 returning the 18th >100g/m intercept from Ternera. Both holes have expanded existing modelled zones as well as improving grade continuity and adding additional gold ounces to the deposit.

NEXT STEPS

Infill and extensional drilling at Ternera and extensional drilling at Ternera East and Drone Hill is continuing, with 6 rigs drilling 24/7. Tesoro is awaiting results from 43 diamond drill holes already completed as part of this program and will report these results as they become available.

Tesoro aims to complete an additional 15,000m of drilling in the current program, with a Mineral Resource update expected for Ternera during Q4 CY2021.

Detailed metallurgical testwork is currently underway with results expected in the coming weeks, with Tesoro committed to progressing the El Zorro Gold Project through to development.

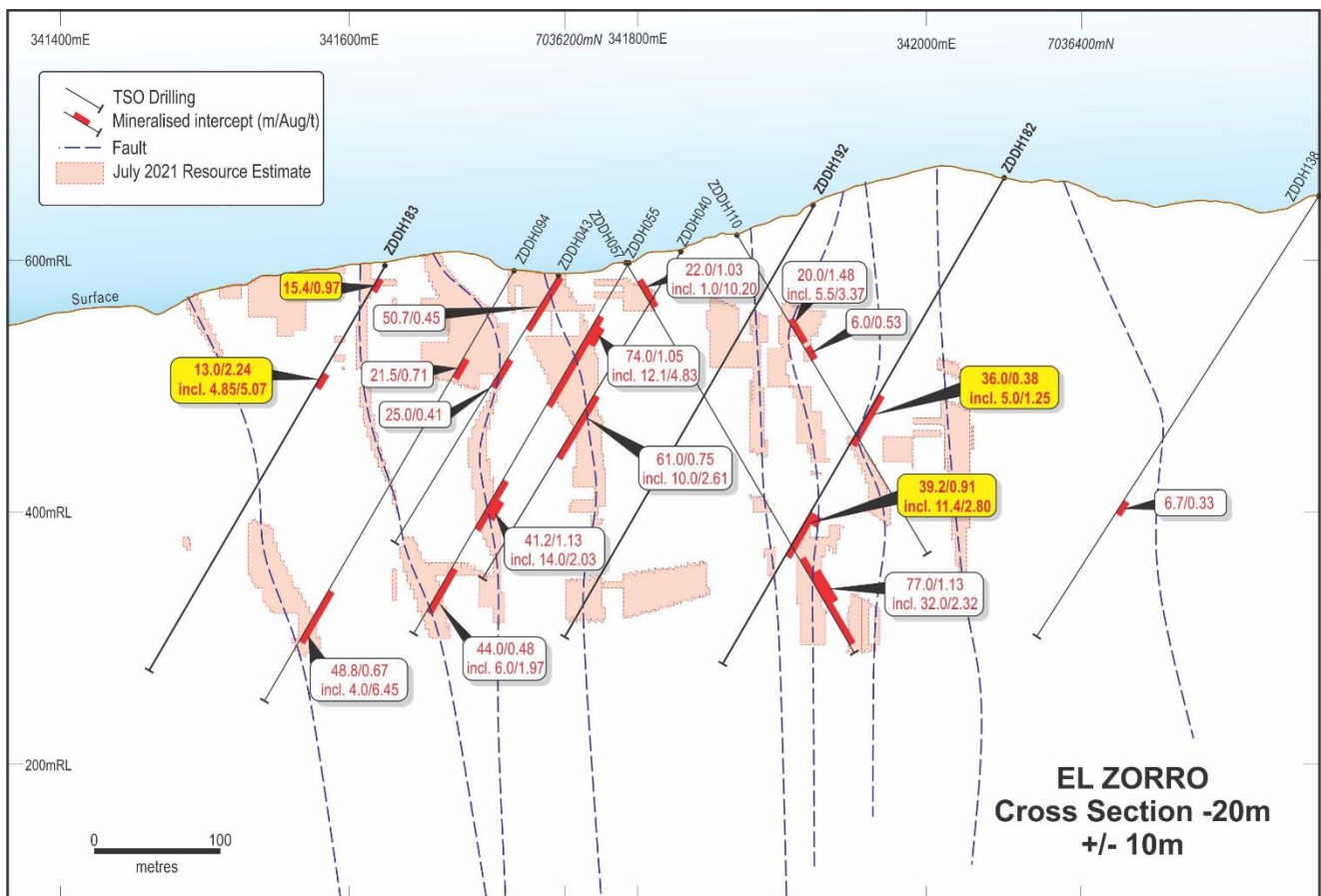


Figure 2: Ternera Drill Section -20m looking northwest. Holes ZDDH0182 and ZDDH0183 extending mineralisation on the east and west margins of Ternera Gold Deposit

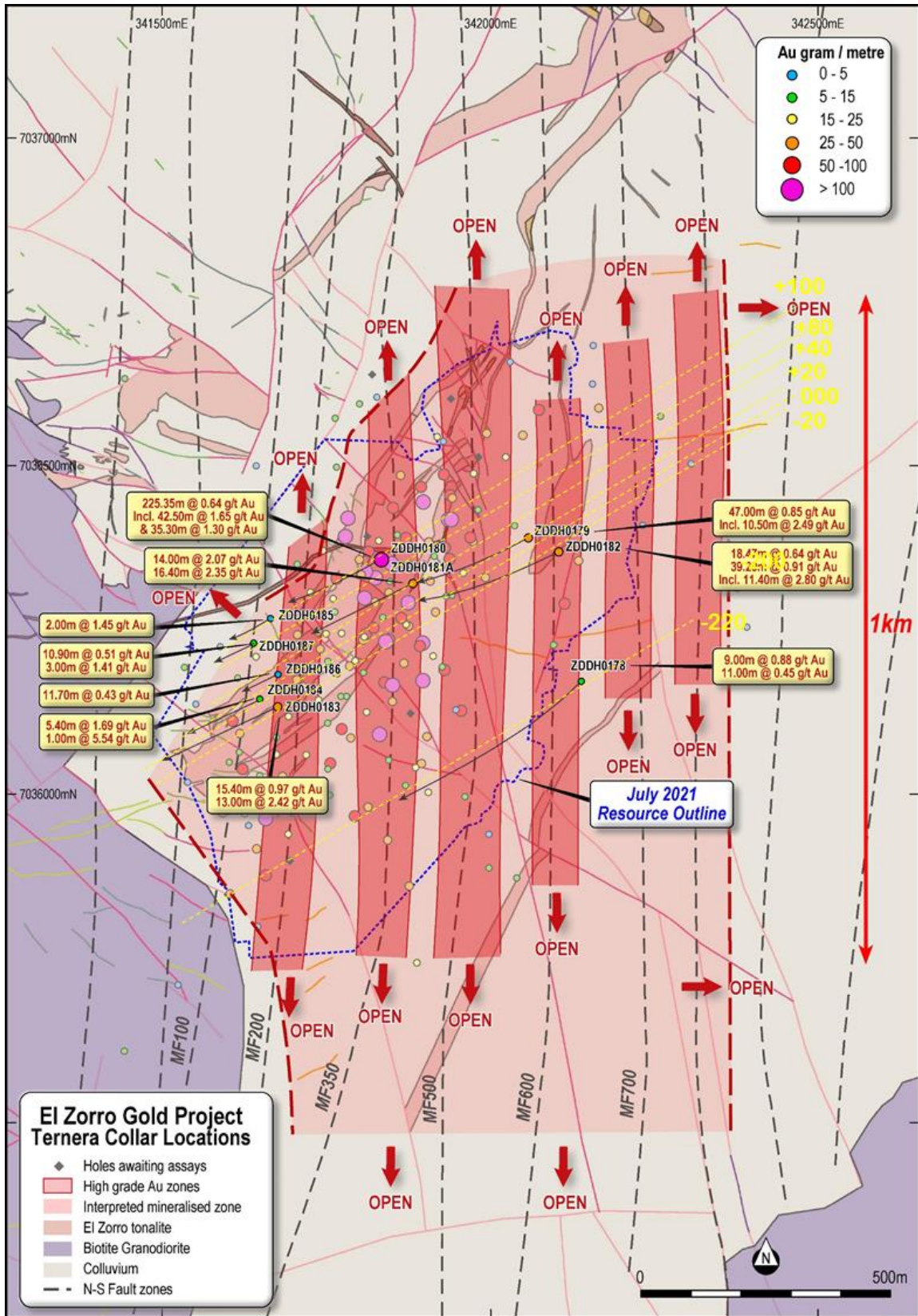


Figure 3: Tenera Drilling - Collar locations on geology and significant intercepts for holes reported in this announcement. Section lines shown in dashed yellow lines. PSAD56/19S datum.

Hole_ID	From (m)	To (m)	Interval	Au (g/t)	Comments	Hole_ID	From (m)	To (m)	Interval	Au (g/t)	Comments
ZDDH0178	342.00	343.87	1.87	1.24		ZDDH0182	69.00	70.00	1.00	2.38	
ZDDH0178	377.00	378.87	1.87	1.00		ZDDH0182	102.00	103.00	1.00	0.86	
ZDDH0178	383.73	384.60	0.87	0.93		ZDDH0182	204.00	240.00	36.00	0.38	
ZDDH0178	387.00	388.00	1.00	1.12		ZDDH0182	204.00	222.47	18.47	0.64	including
ZDDH0178	485.00	494.00	9.00	0.88		ZDDH0182	204.53	209.50	4.97	0.94	including
ZDDH0178	486.35	487.70	1.35	3.88	including	ZDDH0182	218.00	223.00	5.00	1.25	including
ZDDH0178	533.00	553.00	20.00	0.39		ZDDH0182	310.70	349.90	39.20	0.91	
ZDDH0178	542.00	553.00	11.00	0.45	including	ZDDH0182	310.70	322.10	11.40	2.80	including
ZDDH0178	552.00	553.00	1.00	1.69	including	ZDDH0182	426.00	428.00	2.00	0.61	
ZDDH0178	564.00	565.00	1.00	1.53		ZDDH0183	9.60	25.00	15.40	0.97	
ZDDH0179	150.00	156.00	6.00	0.52		ZDDH0183	9.60	15.00	5.40	2.57	including
ZDDH0179	338.00	385.00	47.00	0.85		ZDDH0183	47.00	55.00	8.00	0.31	
ZDDH0179	338.00	348.50	10.50	2.49	including	ZDDH0183	70.00	71.00	1.00	0.73	
ZDDH0179	347.00	351.00	4.00	5.22	including	ZDDH0183	106.00	119.00	13.00	2.42	
ZDDH0179	382.50	385.00	2.50	1.18	including	ZDDH0183	108.60	117.00	8.40	3.46	including
ZDDH0180	20.00	245.35	225.35	0.64		ZDDH0183	109.15	114.00	4.85	5.07	including
ZDDH0180	20.00	116.15	96.15	0.98	including	ZDDH0183	201.00	202.00	1.00	1.35	
ZDDH0180	20.00	62.50	42.50	1.65	including	ZDDH0183	228.50	229.00	0.50	1.11	
ZDDH0180	20.00	25.00	5.00	2.01	including	ZDDH0184	4.00	9.40	5.40	1.69	
ZDDH0180	50.50	62.50	12.00	4.78	including	ZDDH0184	5.50	8.00	2.50	3.22	including
ZDDH0180	50.50	54.00	3.50	10.83	including	ZDDH0184	28.40	29.00	0.60	0.98	
ZDDH0180	71.00	73.00	2.00	1.03	including	ZDDH0184	116.00	117.00	1.00	1.48	
ZDDH0180	82.00	83.00	1.00	6.31	including	ZDDH0184	132.00	133.00	1.00	0.83	
ZDDH0180	102.00	104.00	2.00	1.07	including	ZDDH0184	207.00	208.00	1.00	5.54	
ZDDH0180	108.00	109.00	1.00	1.33	including	ZDDH0185	24.00	25.00	1.00	1.67	
ZDDH0180	115.20	116.15	0.95	2.65	including	ZDDH0185	80.00	82.00	2.00	1.45	
ZDDH0180	135.00	136.00	1.00	1.42	including	ZDDH0186	17.50	19.00	1.50	0.50	abandoned
ZDDH0180	159.70	195.00	35.30	1.03	including	ZDDH0186	47.00	58.70	11.70	0.43	
ZDDH0180	159.70	177.87	18.17	1.41	including	ZDDH0186	47.00	50.60	3.60	0.83	
ZDDH0180	159.70	165.00	5.30	1.94	including	ZDDH0186	57.00	58.70	1.70	1.11	
ZDDH0180	176.00	177.87	1.87	5.30	including	ZDDH0186A	8.00	9.15	1.15	0.81	
ZDDH0180	185.00	187.50	2.50	2.79	including	ZDDH0186A	11.25	12.00	0.75	0.51	
ZDDH0180	231.00	232.00	1.00	1.08	including	ZDDH0186A	57.00	59.00	2.00	0.41	
ZDDH0180	244.00	245.35	1.35	1.41	including	ZDDH0186A	86.00	87.00	1.00	0.81	
ZDDH0180	269.00	270.00	1.00	1.01		ZDDH0186A	192.00	195.00	3.00	0.46	
ZDDH0181A	95.00	96.00	1.00	2.29		ZDDH0186A	210.00	216.00	6.00	0.34	
ZDDH0181A	105.00	119.00	14.00	2.07		ZDDH0186A	214.00	215.00	1.00	0.61	including
ZDDH0181A	107.90	116.90	9.00	2.81	including	ZDDH0186A	235.00	236.00	1.00	0.93	
ZDDH0181A	174.00	174.89	0.89	1.49		ZDDH0187	12.70	13.80	1.10	0.52	
ZDDH0181A	204.60	221.00	16.40	2.35		ZDDH0187	52.00	62.90	10.90	0.51	
ZDDH0181A	216.00	218.00	2.00	12.74	including	ZDDH0187	56.00	58.00	2.00	1.84	
ZDDH0181A	249.00	250.00	1.00	1.02		ZDDH0187	70.00	71.00	1.00	0.56	
ZDDH0181A	264.00	270.00	6.00	2.03		ZDDH0187	104.00	117.00	13.00	0.41	
ZDDH0181A	264.00	268.00	4.00	2.79	including	ZDDH0187	108.00	111.00	3.00	1.41	
ZDDH0181A	303.00	309.00	6.00	1.82							

Table 1: Significant drill results for holes reported in this announcement, results are uncut, no top cut has been applied. A table of significant intercepts for previously reported holes is presented in Appendix 1.

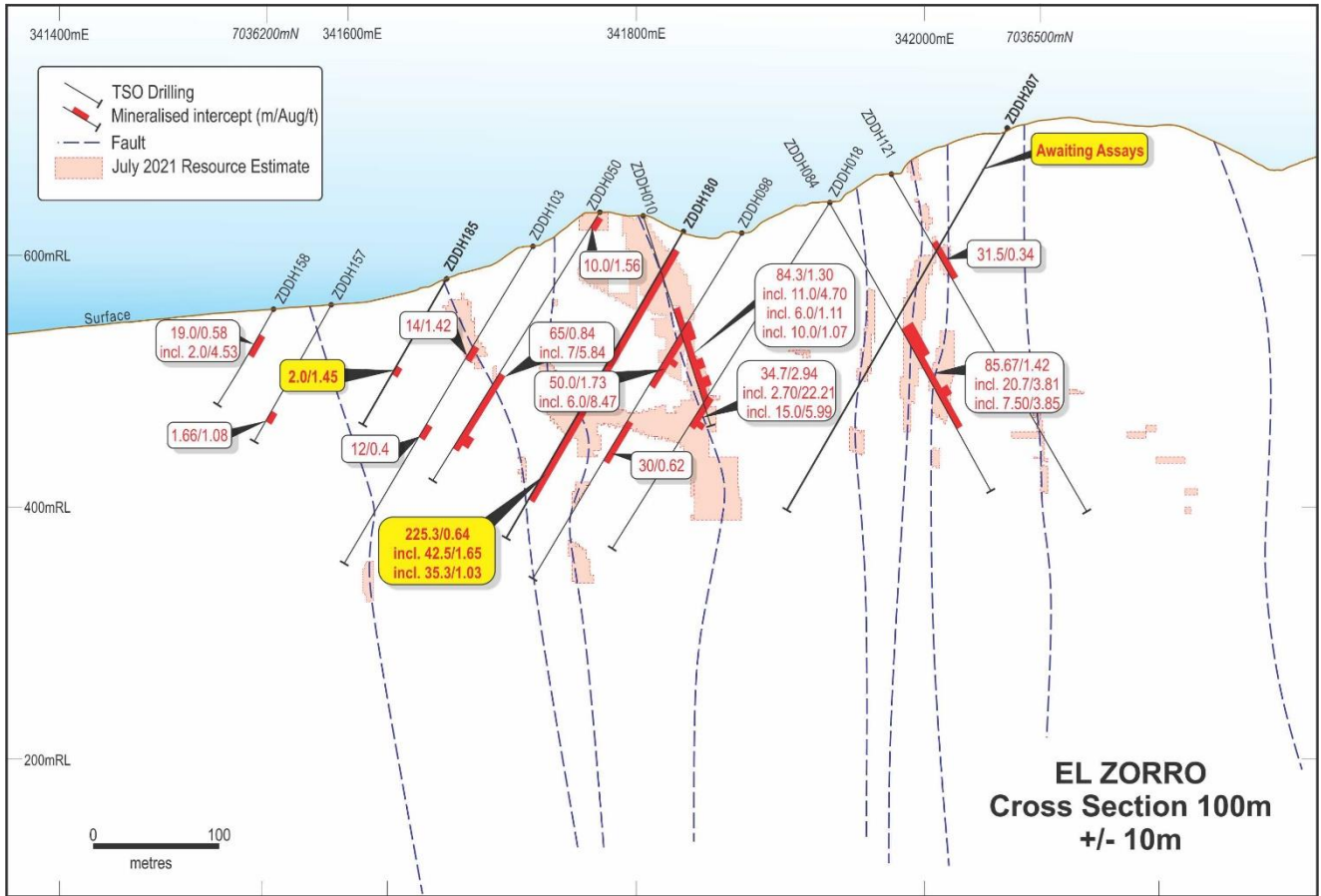


Figure 4: Ternerá Drill Section +100m looking northwest.

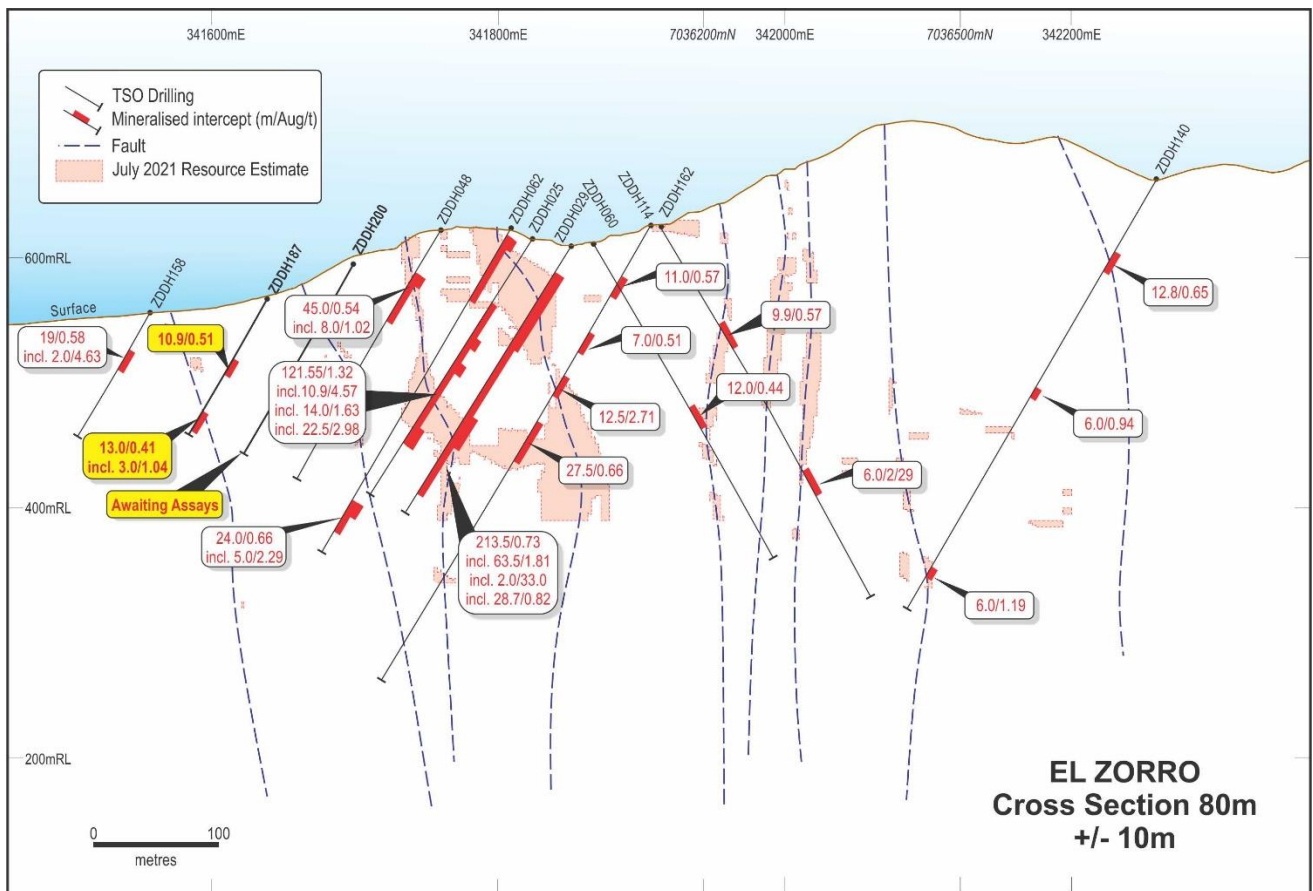


Figure 5: Ternerá Drill Section +80m looking northwest.

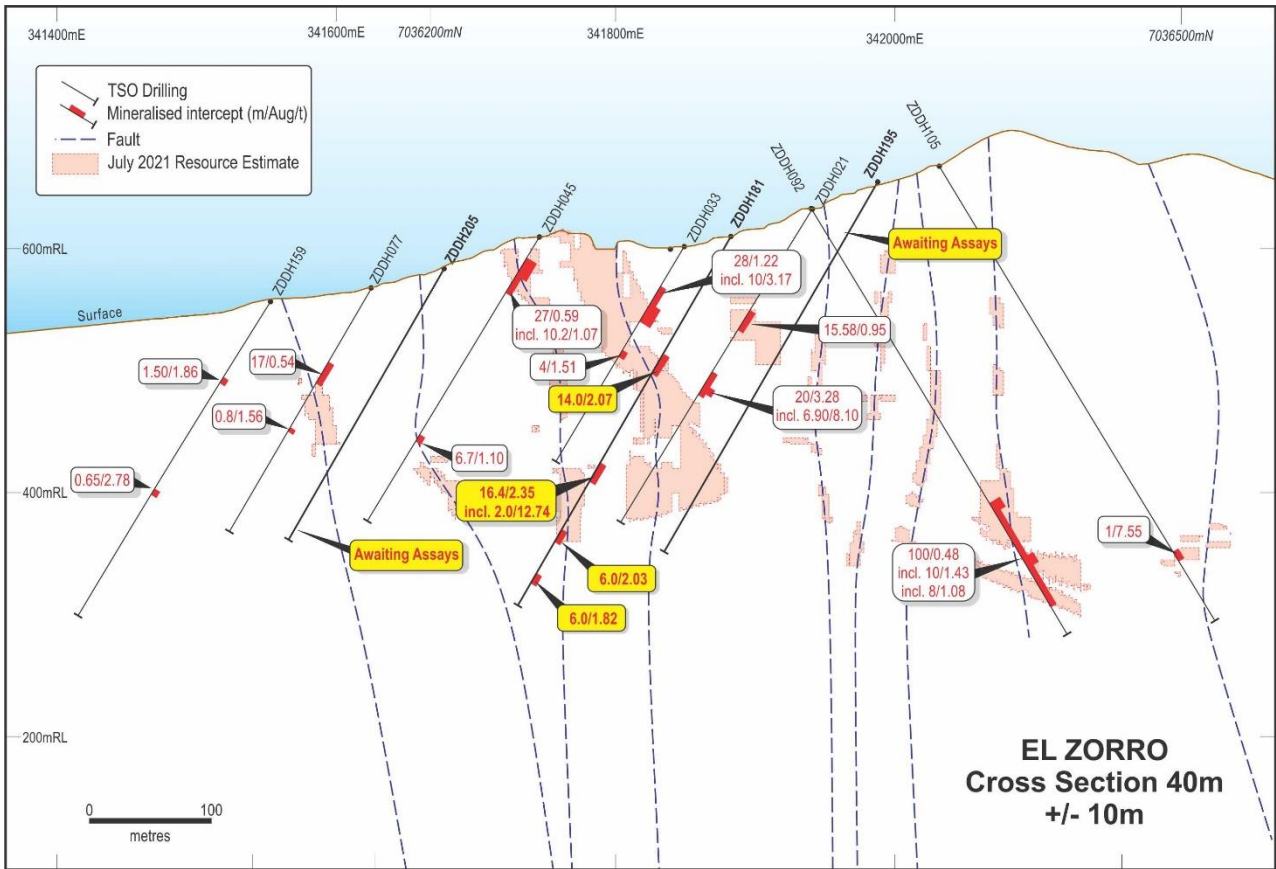


Figure 6: Ternera Drill Section +40m looking northwest.

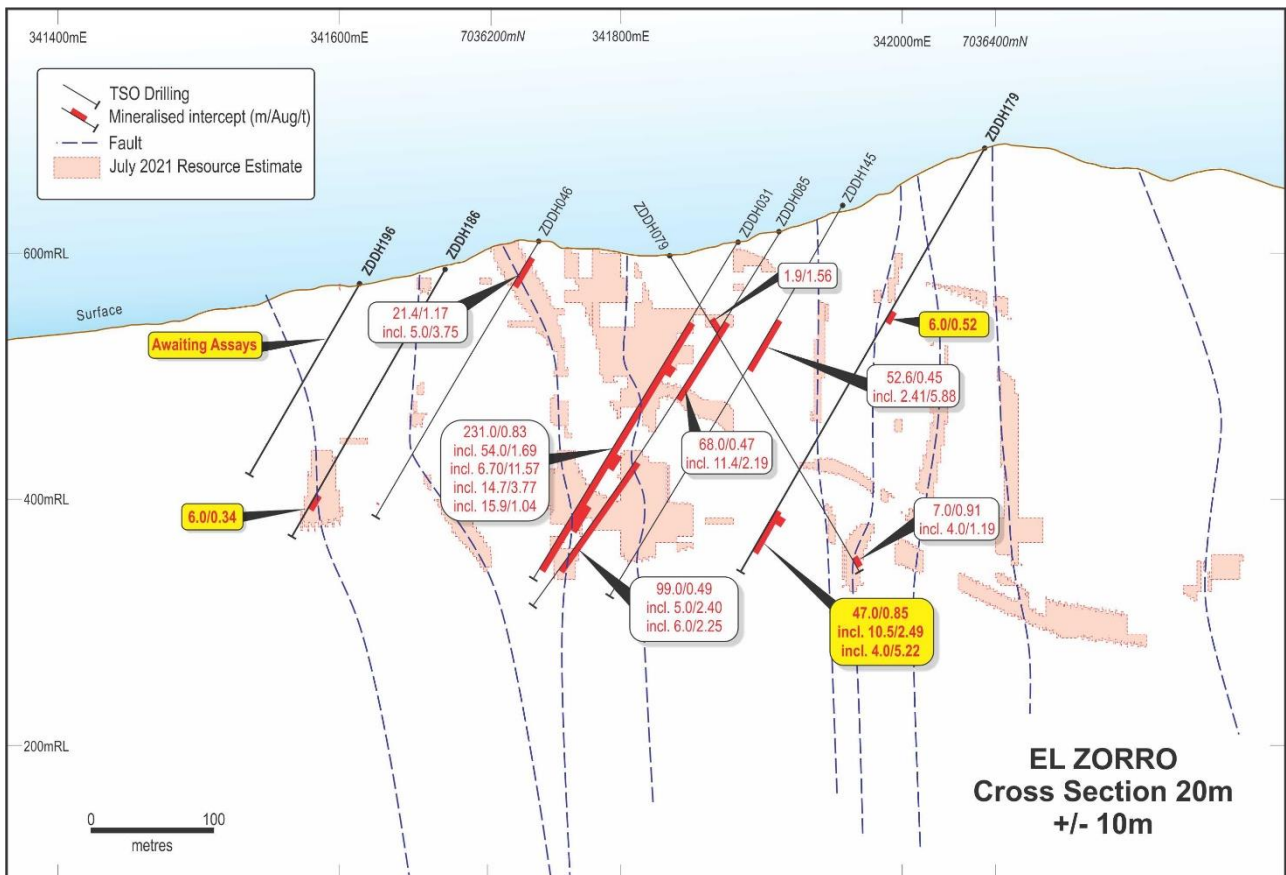


Figure 7: Ternera Drill Section +20m looking northwest.

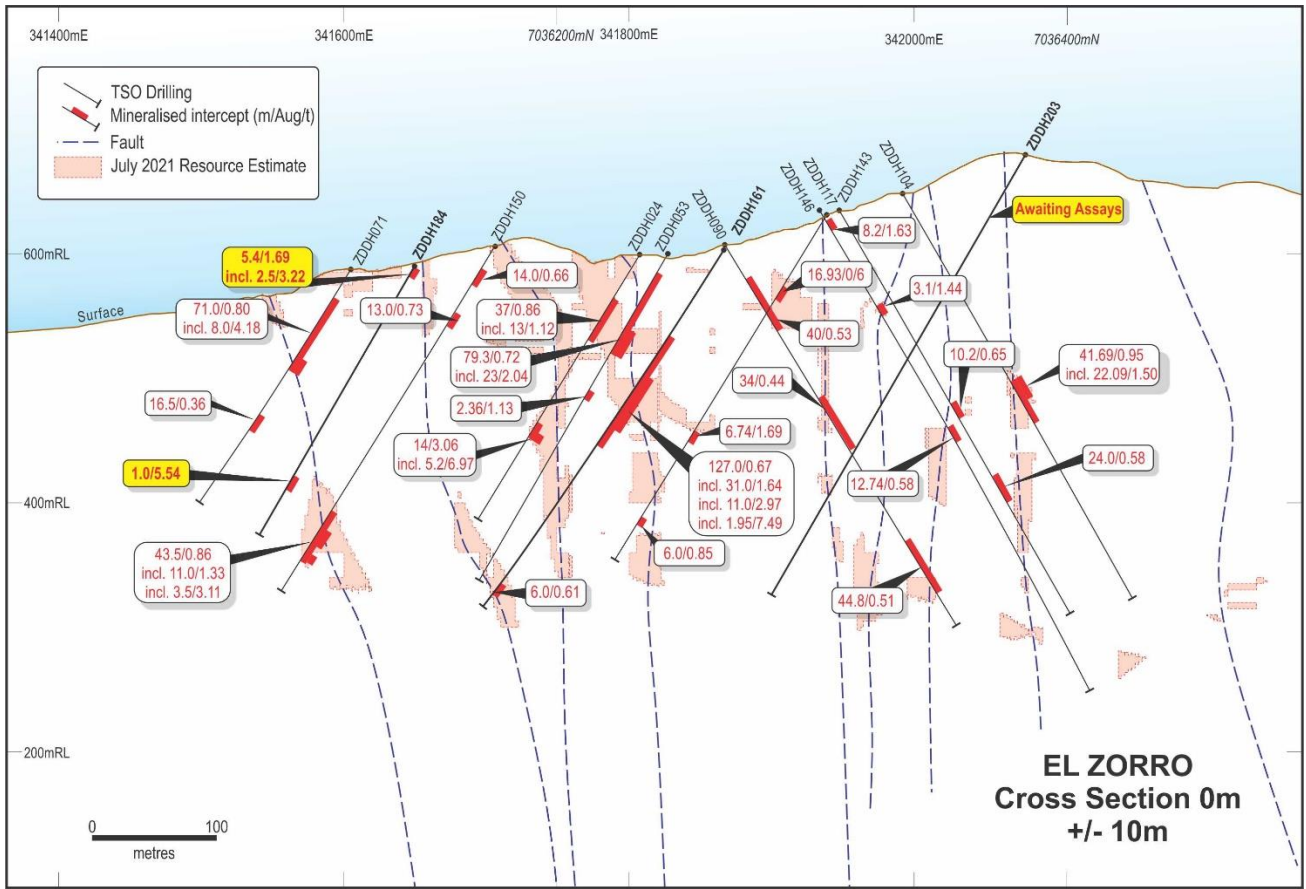


Figure 8: Terner Drill Section 0m looking northwest.

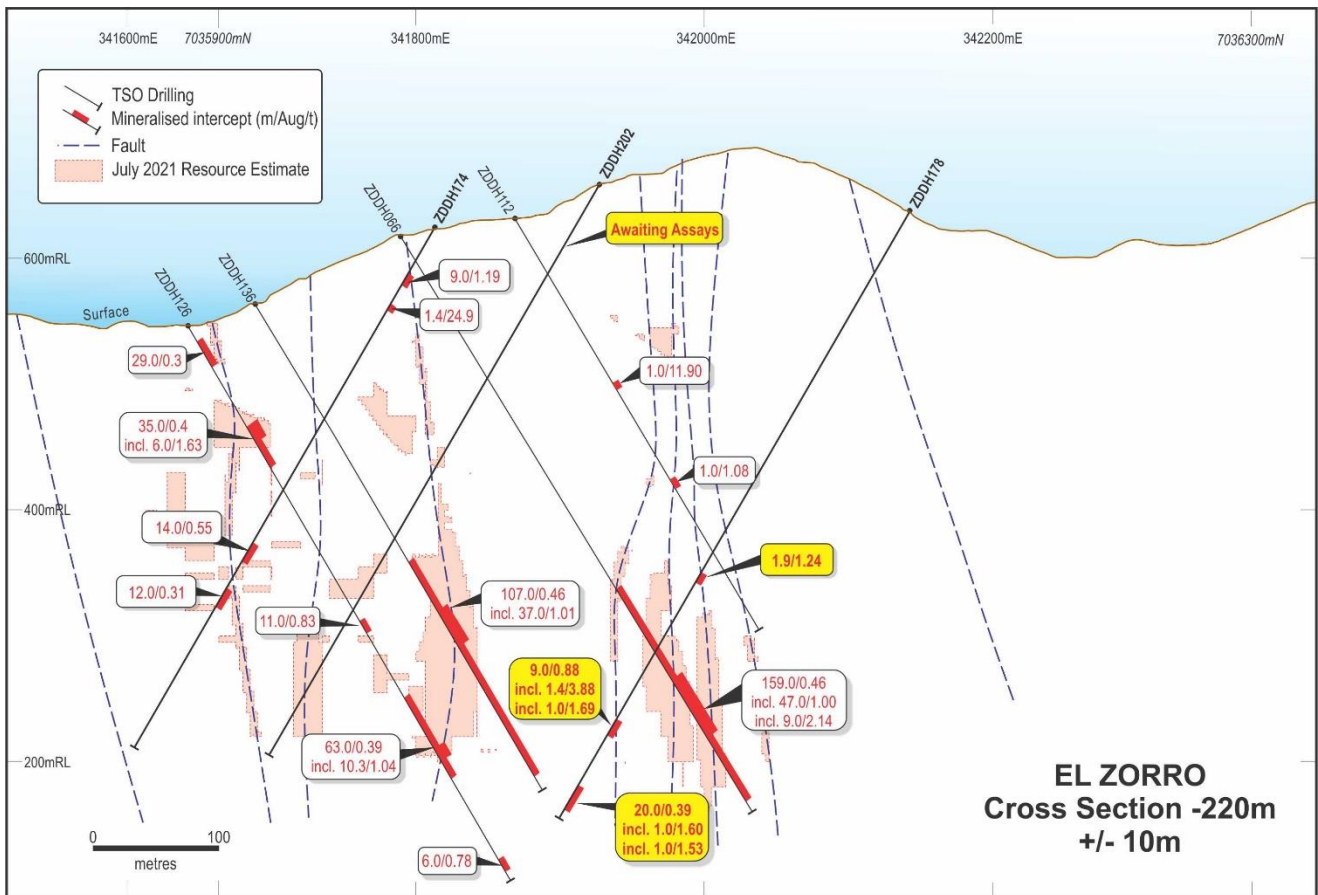


Figure 9: Terner Drill Section -220m looking northwest.

Tenera Gold Deposit Maiden Resource Table

Cut-off Au g/t	Indicated			Inferred			Total		
	Mt	Au g/t	koz	Mt	Au g/t	koz	Mt	Au g/t	koz
0.3	2.7	0.88	75	22.4	0.81	586	25.1	0.82	661
0.4	2.1	1.03	68	17.4	0.95	529	19.4	0.96	597
0.5	1.7	1.17	63	13.7	1.08	476	15.4	1.09	539
0.6	1.4	1.28	58	11.1	1.21	430	12.5	1.22	488
0.7	1.2	1.40	54	8.9	1.34	385	10.1	1.35	439
0.8	0.9	1.64	45	6.0	1.61	312	6.9	1.62	357

Table 2: Maiden Mineral Resource Estimate announced 28 July 2021, reported at various cut-off gold grades.

Authorised by the Board of Tesoro Resources Limited.

For more information:

Company:

Zeff Reeves Managing Director
Tesoro Resources Limited
+61 8 9322 1587

Investors:

Peter Taylor
NWR Communications
+61 (0) 412 036 231
peter@nwrcommunications.com.au

About Tesoro

Tesoro Resources Limited was established with a strategy of acquiring, exploring, and developing mining projects in the Coastal Cordillera region of Chile. The Coastal Cordillera region is host to multiple world class copper and gold mines, has well established infrastructure, service providers and an experienced mining workforce. Large areas of the Coastal Cordillera remain unexplored due to the unconsolidated nature of mining concession ownership, but Tesoro, via its in-country network and experience has been able secure rights to a district scale gold project in-line with the Company's strategy. Tesoro's 95% owned Chilean subsidiary owns 85% of the El Zorro Gold Project.



Competent Persons Statement

The information in this report that relates to Exploration Results is based on information compiled by Mr Zeffron Reeves (B App Sc (Hons) Applied Geology) MBA, MAIG). Mr Reeves is a member of the Australian Institute of Geoscientists and a Director and shareholder of the Company. Mr Reeves has sufficient experience that is relevant to the style of mineralisation and type of deposit under consideration and to the activity which he is undertaking to qualify as a Competent Person as defined in the 2012 Edition of the Australasian Code for Reporting of Exploration Results, Mineral Resources and Ore Reserves. Mr Reeves consents to the inclusion in this report of the matters based on this information in the form and context in which it appears.

The information in this report that relates to Mineral Resources is based on information compiled by Mr Daniel Saunders, a Competent Person who is a Member of The Australasian Institute of Mining and Metallurgy. Mr Saunders is a full-time employee of Cube Consulting Pty Ltd, acting as independent consultants to Tesoro Resources Limited. Mr Saunders has sufficient experience that is relevant to the style of mineralisation and type of deposit under consideration, and to the activity being undertaken to qualify as a Competent Person as defined in the 2012 Edition of the Australasian Code for Reporting of Exploration Results, Mineral Resources and Ore Reserves. The Company confirms that it is not aware of any new information or data that materially affects the Mineral Resource information included in the original announcement on 28 July 2021 and all material assumptions and technical parameters underpinning the estimates in the original announcement continue to apply and have not materially changed. The Company confirms that the form and context in which the applicable Competent Persons' findings are presented have not been materially modified from the original announcement.

Future Performance

This announcement may contain certain forward-looking statements and opinion. Forward-looking statements, including projections, forecasts and estimates, are provided as a general guide only and should not be relied on as an indication or guarantee of future performance and involve known and unknown risks, uncertainties, assumptions, contingencies and other important factors, many of which are outside the control of the Company and which are subject to change without notice and could cause the actual results, performance or achievements of the Company to be materially different from the future results, performance or achievements expressed or implied by such statements. Past performance is not necessarily a guide to future performance and no representation or warranty is made as to the likelihood of achievement or reasonableness of any forward-looking statements or other forecast. Nothing contained in this announcement, nor any information made available to you is, or and shall be relied upon as, a promise, representation, warranty or guarantee as to the past, present or the future performance of Tesoro.

APPENDIX 1 – SIGNIFICANT INTERCEPT TABLE

Hole_ID	From (m)	To (m)	Interval	Au (g/t)	Comments
ZDDH0001	5.00	119.00	114.00	0.35	
ZDDH0001	5.00	15.00	10.00	0.55	including
ZDDH0001	5.00	51.30	46.30	0.45	including
ZDDH0001	12.00	13.00	1.00	1.64	including
ZDDH0001	14.30	15.00	0.70	2.35	including
ZDDH0001	33.64	39.00	5.36	0.97	including
ZDDH0001	44.30	51.30	7.00	0.67	including
ZDDH0001	64.00	65.00	1.00	2.50	including
ZDDH0001	75.50	79.00	3.50	0.89	including
ZDDH0001	75.50	76.00	0.50	4.82	including
ZDDH0001	107.00	112.00	5.00	1.11	including
ZDDH0001	117.00	119.00	2.00	2.05	including
ZDDH0002	5.70	68.00	62.30	0.54	
ZDDH0002	8.80	24.30	15.50	1.15	including
ZDDH0002	8.80	14.00	5.20	1.96	including
ZDDH0002	51.70	68.00	16.30	0.78	including
ZDDH0002	58.00	61.00	3.00	3.62	including
ZDDH0003	21.00	77.30	56.30	0.50	
ZDDH0003	21.00	27.00	6.00	1.96	including
ZDDH0003	21.00	22.83	1.83	5.24	including
ZDDH0003	37.20	43.00	5.80	1.27	including
ZDDH0003	47.30	48.00	0.70	2.00	including
ZDDH0003	64.00	77.30	13.30	0.41	including
ZDDH0003	90.00	91.00	1.00	1.53	
ZDDH0004	5.00	66.00	61.00	0.97	
ZDDH0004	56.00	66.00	10.00	4.53	including
ZDDH0004	57.00	61.00	4.00	9.60	including
ZDDH0005	4.00	42.65	38.65	0.65	
ZDDH0005	4.00	32.00	28.00	0.84	including
ZDDH0005	9.80	28.00	18.20	1.17	including
ZDDH0005	9.80	10.15	0.35	20.10	including
ZDDH0005	51.60	52.00	0.40	2.03	
ZDDH0005	65.00	67.00	2.00	1.03	
ZDDH0005	72.00	85.90	13.90	0.52	
ZDDH0005	72.00	75.00	3.00	1.90	including
ZDDH0005	72.00	73.00	1.00	4.32	including
ZDDH0005	100.60	102.00	1.40	2.07	
ZDDH0005	130.00	132.60	2.60	0.66	
ZDDH0005	135.80	136.80	1.00	12.20	
ZDDH0005	0.00	88.00	88.00	0.15	
ZDDH0006	2.40	3.00	0.60	0.75	including
ZDDH0006	22.60	25.95	3.35	2.14	including
ZDDH0006	24.00	25.00	1.00	6.10	including
ZDDH0006	46.70	50.30	3.60	0.32	including
ZDDH0006	61.10	64.02	2.92	0.42	including
ZDDH0006	108.30	116.00	7.70	0.30	including
ZDDH0006	133.50	135.60	2.10	1.30	including
ZDDH0006	148.00	151.80	3.80	0.59	including
ZDDH0006	180.10	244.00	63.90	0.23	including
ZDDH0006	180.10	181.10	1.00	0.55	including
ZDDH0006	184.00	186.00	2.00	1.06	including
ZDDH0006	207.00	212.00	5.00	0.77	including
ZDDH0006	226.00	227.00	1.00	0.55	including
ZDDH0006	236.00	244.00	8.00	0.66	including
ZDDH0007	1.00	4.00	3.00	4.75	
ZDDH0007	39.00	66.20	27.20	0.70	
ZDDH0007	39.00	58.00	19.00	0.80	including
ZDDH0007	104.85	110.00	5.15	0.34	
ZDDH0007	117.40	118.00	0.60	2.75	
ZDDH0008	35.00	41.10	6.10	0.28	
ZDDH0008	58.00	59.00	1.00	1.43	

Hole_ID	From (m)	To (m)	Interval	Au (g/t)	Comments
ZDDH0009	4.00	6.00	2.00	1.39	
ZDDH0009	12.55	38.00	25.45	0.51	
ZDDH0009	21.00	26.00	5.00	1.09	including
ZDDH0009	48.00	48.50	0.50	2.19	
ZDDH0009	78.00	83.00	5.00	0.59	
ZDDH0010	31.00	33.00	2.00	2.47	
ZDDH0010	60.00	61.00	1.00	1.16	
ZDDH0010	66.00	67.00	1.00	1.04	
ZDDH0010	75.00	159.30	84.30	1.30	
ZDDH0010	75.00	104.00	29.00	2.95	including
ZDDH0010	82.50	86.45	3.95	4.97	including
ZDDH0010	91.00	102.00	11.00	4.70	including
ZDDH0010	93.00	97.00	4.00	8.50	including
ZDDH0010	120.00	126.00	6.00	1.11	including
ZDDH0010	149.00	159.00	10.00	1.07	including
ZDDH0011	176.00	274.30	98.30	1.58	
ZDDH0011	181.70	212.00	30.30	3.03	including
ZDDH0011	196.40	212.00	15.60	3.87	including
ZDDH0011	203.00	203.70	0.70	21.70	including
ZDDH0011	203.00	212.00	9.00	5.07	including
ZDDH0011	217.00	222.00	5.00	4.13	including
ZDDH0011	246.60	256.40	9.80	2.28	including
ZDDH0012	0.00	58.80	58.80	1.70	
ZDDH0012	1.70	22.00	20.30	4.50	including
ZDDH0012	1.70	8.40	6.70	12.21	including
ZDDH0012	2.30	4.70	2.40	33.35	including
ZDDH0012	17.60	22.00	4.40	2.00	including
ZDDH0012	17.60	20.00	2.40	2.82	including
ZDDH0012	53.20	58.80	5.60	0.95	
ZDDH0012	53.20	56.00	2.80	1.42	including
ZDDH0012	151.80	152.20	0.40	2.29	
ZDDH0013	0.00	3.00	3.00	0.83	
ZDDH0013	9.00	14.30	5.30	0.41	
ZDDH0013	25.00	29.80	4.80	0.72	
ZDDH0013	28.55	29.80	1.25	2.14	including
ZDDH0013	46.30	70.00	23.70	0.85	
ZDDH0013	46.30	51.50	5.20	1.24	including
ZDDH0013	51.25	65.35	14.10	1.08	including
ZDDH0013	58.00	65.35	7.35	1.65	including
ZDDH0013	102.00	104.00	2.00	0.79	
ZDDH0013	136.00	137.30	1.30	4.97	
ZDDH0013	165.00	173.60	8.60	1.60	
ZDDH0013	170.40	173.00	2.60	2.80	including
ZDDH0014	15.30	70.60	55.30	1.01	
ZDDH0014	15.30	34.00	18.70	2.19	including
ZDDH0014	15.30	26.30	11.00	3.40	including
ZDDH0014	23.00	26.30	3.30	6.18	including
ZDDH0014	64.60	70.60	6.00	2.03	including
ZDDH0014	64.60	67.35	2.75	5.00	including
ZDDH0014	112.00	122.50	10.50	0.52	
ZDDH0014	115.00	117.00	2.00	1.75	including
ZDDH0014	177.20	179.00	1.80	2.37	
ZDDH0015	37.90	39.70	1.80	1.11	
ZDDH0015	91.90	132.70	40.80	0.37	
ZDDH0015	91.90	94.60	2.70	1.64	including
ZDDH0015	112.00	116.00	4.00	1.13	including
ZDDH0015	240.60	242.00	1.40	8.46	
ZDDH0015	265.90	269.00	3.10	0.64	
ZDDH0016	125.00	131.72	6.72	1.47	
ZDDH0016	152.00	204.60	52.60	0.62	
ZDDH0016	188.10	194.00	5.90	3.30	including
ZDDH0016	188.58	188.90	0.32	31.30	including
ZDDH0016	203.60	204.60	1.00	3.00	including
ZDDH0016	281.00	290.00	9.00	0.36	
ZDDH0016	287.50	290.00	2.50	0.77	including

ASX Announcement 16 September 2021

Hole_ID	From (m)	To (m)	Interval	Au (g/t)	Comments
ZDDH0017	44.00	74.00	30.00	0.94	
ZDDH0017	44.00	60.10	16.10	1.05	including
ZDDH0017	44.00	47.00	3.00	4.27	including
ZDDH0017	70.00	74.00	4.00	4.26	including
ZDDH0017	103.46	105.60	2.14	1.76	
ZDDH0017	167.55	254.00	86.45	2.29	including
ZDDH0017	182.70	233.20	50.50	3.63	including
ZDDH0017	183.22	206.22	23.00	7.20	including
ZDDH0017	190.00	205.00	15.00	10.82	including
ZDDH0017	197.00	202.30	5.30	25.31	including
ZDDH0017	200.00	202.30	2.30	46.41	including
ZDDH0018	187.27	222.00	34.73	2.94	
ZDDH0018	187.27	211.00	23.73	4.09	including
ZDDH0018	197.00	199.70	2.70	22.21	including
ZDDH0018	189.00	204.00	15.00	5.99	including
ZDDH0019	21.00	89.52	68.52	0.47	
ZDDH0019	36.00	45.00	9.00	1.34	including
ZDDH0019	74.00	79.00	5.00	1.23	including
ZDDH0020	87.30	87.60	0.30	3.33	
ZDDH0021	100.92	116.50	15.58	0.95	
ZDDH0021	107.50	112.00	4.50	1.24	including
ZDDH0021	100.92	101.70	0.78	8.44	including
ZDDH0021	189.25	208.50	19.25	2.86	open downhole
ZDDH0021	189.25	201.30	12.05	4.25	including
ZDDH0021	189.25	195.40	6.15	7.37	including
ZDDH0021	193.90	195.40	1.50	20.82	including
ZDDH0022	30.00	31.00	1.00	3.16	
ZDDH0022	78.00	119.17	41.17	1.38	
ZDDH0022	94.40	95.45	1.05	2.98	including
ZDDH0022	105.00	119.17	14.17	3.25	including
ZDDH0022	105.00	110.32	5.32	6.54	including
ZDDH0023	146.70	151.00	4.30	7.25	
ZDDH0023	146.70	149.00	2.30	13.30	including
ZDDH0023	273.00	277.00	4.00	1.06	
ZDDH0023	276.00	277.00	1.00	3.32	including
ZDDH0024	6.00	9.00	3.00	1.63	
ZDDH0024	41.00	78.00	37.00	0.86	
ZDDH0024	41.00	45.50	4.50	2.12	including
ZDDH0024	44.10	45.50	1.40	5.93	including
ZDDH0024	54.50	57.00	2.50	1.87	including
ZDDH0024	56.50	69.50	13.00	1.12	including
ZDDH0024	66.00	69.50	3.50	2.53	including
ZDDH0024	155.00	169.00	14.00	3.06	
ZDDH0024	162.20	163.50	1.30	19.72	including
ZDDH0024	161.80	167.00	5.20	6.97	including
ZDDH0025	49.00	170.55	121.55	1.32	
ZDDH0025	73.10	84.00	10.90	4.57	including
ZDDH0025	75.00	82.00	7.00	6.14	including
ZDDH0025	104.00	118.00	14.00	1.63	including
ZDDH0025	110.00	113.60	3.60	4.97	including
ZDDH0025	148.00	160.27	12.27	4.98	including
ZDDH0025	148.00	170.55	22.55	2.98	including
ZDDH0025	155.20	159.90	4.70	10.69	including
ZDDH0026	92.00	110.00	18.00	1.36	
ZDDH0026	105.40	110.00	4.60	4.99	including
ZDDH0026	233.00	242.00	9.00	1.85	
ZDDH0026	240.00	242.00	2.00	7.31	including
ZDDH0027	176.00	206.50	30.50	0.40	
ZDDH0027	176.00	202.00	26.00	0.44	including
ZDDH0027	176.00	188.00	12.00	0.64	including
ZDDH0027	176.00	182.00	6.00	1.21	including

Hole_ID	From (m)	To (m)	Interval	Au (g/t)	Comments
ZDDH0028	14.00	14.75	0.75	3.23	
ZDDH0028	21.00	28.00	7.00	0.85	
ZDDH0028	25.00	25.90	0.90	5.03	including
ZDDH0028	42.00	49.00	7.00	0.61	
ZDDH0028	43.90	45.00	1.10	1.10	including
ZDDH0029	29.50	243.00	213.50	0.73	
ZDDH0029	29.50	93.00	63.50	1.81	including
ZDDH0029	29.50	31.20	1.70	1.20	including
ZDDH0029	43.00	48.00	5.00	2.76	including
ZDDH0029	56.64	61.84	5.20	3.36	including
ZDDH0029	72.00	80.00	8.00	1.24	including
ZDDH0029	91.00	93.00	2.00	33.00	including
ZDDH0029	121.00	130.70	9.70	0.53	
ZDDH0029	121.00	122.00	1.00	3.20	including
ZDDH0029	166.30	195.00	28.70	0.82	
ZDDH0029	180.00	195.00	15.00	1.33	including
ZDDH0030	5.20	6.40	1.20	0.74	
ZDDH0030	50.00	76.00	26.00	0.69	
ZDDH0030	66.00	76.00	10.00	1.54	including
ZDDH0030	66.00	71.10	5.10	2.64	including
ZDDH0030	66.00	67.00	1.00	6.89	including
ZDDH0030	70.00	71.10	1.10	5.73	including
ZDDH0030	101.00	102.50	1.50	1.13	
ZDDH0030	117.00	120.00	3.00	3.23	
ZDDH0030	117.00	119.13	2.13	4.15	including
ZDDH0030	165.00	167.00	2.00	4.05	
ZDDH0030	195.40	199.00	3.60	1.41	open downhole
ZDDH0030	202.95	203.90	0.95	5.12	open downhole
ZDDH0031	72.00	303.00	231.00	0.83	
ZDDH0031	72.00	126.00	54.00	1.69	
ZDDH0031	72.00	75.60	3.60	1.27	including
ZDDH0031	100.00	104.44	4.44	1.04	including
ZDDH0031	100.00	125.00	25.00	3.36	including
ZDDH0031	118.30	125.00	6.70	11.57	including
ZDDH0031	146.40	154.00	7.60	0.79	including
ZDDH0031	171.60	173.00	1.40	1.40	including
ZDDH0031	193.30	217.60	24.30	2.43	including
ZDDH0031	193.30	208.00	14.70	3.77	including
ZDDH0031	193.30	197.00	3.70	4.16	including
ZDDH0031	204.34	217.60	13.26	3.25	including
ZDDH0031	204.34	208.00	3.66	10.76	including
ZDDH0031	228.00	229.00	1.00	2.17	including
ZDDH0031	248.00	263.90	15.90	1.04	including
ZDDH0031	291.00	295.00	4.00	1.00	including
ZDDH0032	3.20	6.00	2.80	1.23	
ZDDH0032	17.30	18.30	1.00	7.09	
ZDDH0032	43.50	44.00	0.50	5.70	
ZDDH0032	75.00	76.00	1.00	5.02	
ZDDH0032	128.00	204.00	76.00	0.93	
ZDDH0032	128.00	140.00	12.00	1.39	including
ZDDH0032	132.63	135.00	2.37	4.30	including
ZDDH0032	157.00	162.00	5.00	2.41	including
ZDDH0032	171.00	174.80	3.80	1.92	including
ZDDH0032	178.30	197.00	18.70	1.57	including
ZDDH0032	178.30	179.40	1.10	5.15	including
ZDDH0032	191.00	197.00	6.00	2.58	including
ZDDH0033	40.00	68.00	28.00	1.22	
ZDDH0033	57.00	67.00	10.00	3.17	including
ZDDH0033	59.00	63.00	4.00	5.96	including
ZDDH0033	100.00	104.00	4.00	1.51	
ZDDH0033	134.70	137.00	2.30	1.27	
ZDDH0033	143.00	144.00	1.00	1.45	

Hole_ID	From (m)	To (m)	Interval	Au (g/t)	Comments
ZDDH0034	17.00	28.00	11.00	0.79	
ZDDH0034	23.00	24.00	1.00	4.59	including
ZDDH0034	27.00	28.00	1.00	1.77	including
ZDDH0034	62.22	63.34	1.12	2.85	
ZDDH0034	87.00	92.84	5.84	1.12	
ZDDH0034	89.00	91.00	2.00	2.45	
ZDDH0034	105.40	106.00	0.60	1.15	
ZDDH0034	116.00	117.00	1.00	1.17	
ZDDH0034	172.00	173.00	1.00	1.68	
ZDDH0034	180.40	181.50	1.10	6.58	
ZDDH0034	193.00	194.00	1.00	2.73	
ZDDH0034	202.00	203.00	1.00	2.12	
ZDDH0035	67.00	68.00	1.00	2.67	
ZDDH0035	81.10	110.34	29.24	1.05	
ZDDH0035	89.00	94.00	5.00	4.11	including
ZDDH0035	84.00	106.00	22.00	1.34	including
ZDDH0035	144.00	155.00	11.00	1.15	
ZDDH0035	153.00	155.00	2.00	4.41	including
ZDDH0035	162.00	164.00	2.00	1.03	
ZDDH0035	199.00	200.00	1.00	1.76	
ZDDH0035	192.00	238.00	46.00	0.72	
ZDDH0035	224.00	238.00	14.00	1.86	including
ZDDH0035	224.00	233.00	9.00	2.59	including
ZDDH0035	277.00	278.00	1.00	1.63	
ZDDH0036	74.00	125.00	51.00	1.07	
ZDDH0036	74.00	96.00	22.00	2.16	including
ZDDH0036	88.30	96.00	7.70	5.04	including
ZDDH0036	104.00	105.00	1.00	2.33	including
ZDDH0036	114.00	115.00	1.00	2.84	including
ZDDH0036	165.00	166.00	1.00	1.11	
ZDDH0036	215.00	216.00	1.00	1.60	
ZDDH0037	42.00	65.00	23.00	0.40	
ZDDH0037	42.00	42.68	0.68	1.55	including
ZDDH0037	56.00	65.00	9.00	0.70	including
ZDDH0037	56.00	57.00	1.00	2.47	including
ZDDH0037	62.00	64.00	2.00	1.32	including
ZDDH0037	149.00	172.00	23.00	0.82	
ZDDH0037	149.00	154.00	5.00	1.47	including
ZDDH0037	162.00	172.00	10.00	0.92	including
ZDDH0037	162.00	168.00	6.00	1.04	including
ZDDH0038	23.00	24.00	1.00	3.12	
ZDDH0038	74.20	113.00	38.80	0.49	
ZDDH0038	74.20	77.00	2.80	2.06	including
ZDDH0038	92.00	93.00	1.00	4.39	including
ZDDH0038	105.00	106.00	1.00	2.11	including
ZDDH0038	148.00	152.00	4.00	1.17	including
ZDDH0038	178.00	186.00	8.00	0.50	
ZDDH0038	185.00	186.00	1.00	2.48	including
ZDDH0038	200.00	208.10	8.10	1.12	including
ZDDH0038	202.00	204.00	2.00	3.72	including
ZDDH0039	2.50	5.60	3.10	0.39	
ZDDH0039	78.70	81.00	2.30	1.43	
ZDDH0039	188.00	252.50	64.50	0.47	
ZDDH0039	212.00	232.00	20.00	0.84	including
ZDDH0039	212.00	218.00	6.00	1.49	including
ZDDH0039	226.00	227.00	1.00	3.86	including
ZDDH0039	237.00	238.00	1.00	2.30	including
ZDDH0039	268.00	269.00	1.00	1.62	including
ZDDH0040	136.00	197.00	61.00	0.75	
ZDDH0040	136.00	152.00	16.00	1.96	including
ZDDH0040	136.00	146.00	10.00	2.61	including
ZDDH0040	142.00	146.00	4.00	5.34	including
ZDDH0040	160.00	164.00	4.00	0.95	including
ZDDH0040	161.00	162.00	1.00	2.84	including
ZDDH0040	182.00	188.00	6.00	0.72	including
ZDDH0040	195.00	197.00	2.00	2.75	including
ZDDH0040	288.00	291.00	3.00	1.24	including
ZDDH0041	2.00	12.00	10.00	0.55	
ZDDH0041	6.00	8.00	2.00	1.33	including
ZDDH0041	23.50	52.00	28.50	0.38	
ZDDH0041	23.50	32.00	8.50	0.48	including
ZDDH0041	29.00	32.00	3.00	0.99	including

Hole_ID	From (m)	To (m)	Interval	Au (g/t)	Comments
ZDDH0041	40.00	46.00	6.00	0.61	
ZDDH0041	106.20	108.00	1.80	3.49	
ZDDH0041	127.50	128.00	0.50	29.90	
ZDDH0041	140.00	145.00	5.00	5.91	
ZDDH0041	141.65	143.50	1.85	15.22	including
ZDDH0042	112.00	127.00	15.00	0.68	
ZDDH0042	126.00	127.00	1.00	5.64	including
ZDDH0043	5.30	56.00	50.70	0.45	
ZDDH0043	5.30	22.50	17.20	0.94	including
ZDDH0043	9.50	13.00	3.50	3.44	including
ZDDH0043	80.00	105.00	25.00	0.41	
ZDDH0043	81.00	85.00	4.00	0.87	including
ZDDH0043	103.00	105.00	2.00	1.60	including
ZDDH0043	241.00	242.00	1.00	1.02	
ZDDH0044	104.00	107.00	3.00	0.92	
ZDDH0044	104.00	105.00	1.00	2.25	including
ZDDH0045	23.00	50.00	27.00	0.59	
ZDDH0045	36.00	46.20	10.20	1.07	including
ZDDH0045	36.00	40.00	4.00	1.80	including
ZDDH0045	97.00	98.00	1.00	1.91	
ZDDH0045	196.30	203.00	6.70	1.10	
ZDDH0045	197.00	198.50	1.50	3.21	including
ZDDH0045	196.30	199.00	2.70	2.70	including
ZDDH0046	17.60	39.00	21.40	1.17	
ZDDH0046	26.00	31.00	5.00	3.75	including
ZDDH0046	28.00	31.00	3.00	5.71	including
ZDDH0046	180.00	181.00	1.00	1.11	
ZDDH0046	223.00	224.00	1.00	1.45	
ZDDH0046	248.60	250.00	1.40	1.35	
ZDDH0047	30.00	134.50	104.50	0.56	
ZDDH0047	35.00	36.00	1.00	2.98	including
ZDDH0047	74.00	75.00	1.00	2.03	including
ZDDH0047	97.00	134.80	37.80	1.23	including
ZDDH0047	97.00	109.00	12.00	2.68	including
ZDDH0047	97.00	99.00	2.00	11.00	including
ZDDH0047	130.00	134.80	4.80	2.71	including
ZDDH0047	210.00	211.00	1.00	1.78	
ZDDH0047	288.00	289.00	1.00	1.19	
ZDDH0048	45.00	90.00	45.00	0.54	
ZDDH0048	53.50	54.50	1.00	3.15	including
ZDDH0048	47.00	55.00	8.00	1.02	including
ZDDH0048	80.00	83.00	3.00	4.18	including
ZDDH0049	124.00	235.50	111.50	1.25	
ZDDH0049	124.00	182.00	58.00	2.04	including
ZDDH0049	154.00	181.50	27.50	3.57	including
ZDDH0049	124.00	141.00	17.00	1.11	including
ZDDH0049	124.00	125.00	1.00	10.25	including
ZDDH0049	159.00	172.00	13.00	5.32	including
ZDDH0049	159.00	165.00	6.00	4.17	including
ZDDH0049	177.00	182.00	5.00	5.14	including
ZDDH0049	213.00	235.50	22.50	0.89	including
ZDDH0049	215.00	218.00	3.00	1.39	including
ZDDH0049	227.00	235.50	8.50	1.81	including
ZDDH0049	231.00	235.50	4.50	3.07	including
ZDDH0049	245.00	246.00	1.00	1.66	
ZDDH0049	285.00	286.00	1.00	3.81	
ZDDH0049	290.00	291.00	1.00	1.12	
ZDDH0050	6.00	16.00	10.00	1.56	
ZDDH0050	7.00	8.00	1.00	10.65	including
ZDDH0050	92.00	93.00	1.00	2.55	
ZDDH0050	157.00	222.00	65.00	0.84	
ZDDH0050	183.00	185.00	2.00	2.02	including
ZDDH0050	192.00	193.00	1.00	2.35	including
ZDDH0050	202.00	209.00	7.00	5.84	including
ZDDH0050	205.00	207.50	2.50	15.92	including
ZDDH0050	220.00	221.00	1.00	1.27	including

Hole_ID	From (m)	To (m)	Interval	Au (g/t)	Comments
ZDDH0051	249.00	347.00	98.00	0.95	
ZDDH0051	251.00	282.00	31.00	1.55	including
ZDDH0051	251.00	265.00	14.00	2.71	including
ZDDH0051	258.00	264.00	6.00	4.86	including
ZDDH0051	260.00	261.00	1.00	27.60	including
ZDDH0051	264.00	265.00	1.00	9.85	including
ZDDH0051	303.00	320.00	17.00	1.03	including
ZDDH0051	317.00	318.00	1.00	5.99	including
ZDDH0051	317.00	332.50	15.50	1.19	including
ZDDH0051	328.00	347.00	19.00	1.25	including
ZDDH0051	345.00	346.00	1.00	8.25	including
ZDDH0052	10.00	11.00	1.00	1.35	
ZDDH0052	25.00	67.00	42.00	0.44	
ZDDH0052	25.50	26.50	1.00	2.25	including
ZDDH0052	64.00	68.00	4.00	2.37	
ZDDH0052	154.00	157.00	3.00	3.27	
ZDDH0052	177.00	178.00	1.00	1.51	
ZDDH0053	7.70	87.00	79.30	0.72	
ZDDH0053	15.00	16.00	1.00	1.20	including
ZDDH0053	36.00	37.00	1.00	1.12	including
ZDDH0053	64.00	87.00	23.00	2.04	including
ZDDH0053	64.00	71.00	7.00	4.47	including
ZDDH0053	66.00	69.00	3.00	7.89	including
ZDDH0053	64.00	80.50	16.50	2.50	including
ZDDH0053	134.50	136.86	2.36	1.13	
ZDDH0053	146.00	147.00	1.00	1.87	
ZDDH0053	188.00	191.00	3.00	0.58	
ZDDH0053	240.00	241.00	1.00	1.09	
ZDDH0053	274.00	281.00	7.00	0.77	
ZDDH0053	274.00	275.00	1.00	3.65	including
ZDDH0053	280.00	281.00	1.00	1.11	including
ZDDH0054	91.00	110.00	19.00	0.46	
ZDDH0054	104.00	108.00	4.00	1.48	including
ZDDH0054	118.50	119.20	0.70	1.72	
ZDDH0054	252.00	253.00	1.00	1.23	
ZDDH0054	280.00	281.00	1.00	8.75	
ZDDH0054	336.00	337.00	1.00	1.23	
ZDDH0055	20.00	241.20	221.20	0.62	
ZDDH0055	21.00	22.00	1.00	3.19	including
ZDDH0055	48.00	122.00	74.00	1.05	including
ZDDH0055	48.00	88.50	40.50	1.51	including
ZDDH0055	48.00	60.12	12.12	4.83	including
ZDDH0055	77.00	80.00	3.00	16.88	including
ZDDH0055	105.00	109.00	4.00	3.04	including
ZDDH0055	168.00	169.00	1.00	2.00	including
ZDDH0055	200.00	241.20	41.20	1.13	including
ZDDH0055	200.00	233.00	33.00	1.36	including
ZDDH0055	200.00	201.00	1.00	2.83	including
ZDDH0055	207.00	208.00	1.00	6.51	including
ZDDH0055	217.00	231.00	14.00	2.03	including
ZDDH0055	223.00	231.00	8.00	2.64	including
ZDDH0055	282.00	326.00	44.00	0.48	
ZDDH0055	282.00	283.00	1.00	3.91	including
ZDDH0055	302.00	308.00	6.00	1.97	including
ZDDH0055	319.00	320.00	1.00	1.51	including
ZDDH0055	325.00	326.00	1.00	3.77	including
ZDDH0056	232.00	236.70	4.70	0.70	
ZDDH0056	236.00	236.70	0.70	3.09	
ZDDH0057	22.00	44.00	22.00	1.03	
ZDDH0057	22.00	23.00	1.00	10.20	including
ZDDH0057	22.00	30.00	8.00	1.61	including
ZDDH0057	216.00	233.00	17.00	0.55	
ZDDH0057	225.00	228.00	3.00	1.93	including
ZDDH0057	274.00	351.00	77.00	1.13	
ZDDH0057	279.00	321.00	42.00	1.97	including
ZDDH0057	279.00	311.00	32.00	2.32	including
ZDDH0057	283.00	298.00	15.00	3.25	including
ZDDH0057	318.00	321.00	3.00	2.75	including

Hole_ID	From (m)	To (m)	Interval	Au (g/t)	Comments
ZDDH0058	34.00	35.00	1.00	1.29	
ZDDH0058	237.00	250.00	13.00	0.47	
ZDDH0058	237.00	241.00	4.00	0.69	including
ZDDH0058	248.00	250.00	2.00	1.49	including
ZDDH0059	61.00	62.00	1.00	1.02	
ZDDH0059	194.50	282.00	87.50	0.72	
ZDDH0059	196.00	244.50	48.50	1.02	including
ZDDH0059	207.00	241.60	34.60	1.29	including
ZDDH0059	229.00	241.60	12.60	2.21	including
ZDDH0059	196.00	198.00	2.00	1.76	including
ZDDH0059	207.00	212.00	5.00	1.58	including
ZDDH0059	236.00	241.60	5.60	4.37	including
ZDDH0059	276.00	282.00	6.00	1.48	
ZDDH0060	156.00	168.00	12.00	0.44	
ZDDH0060	163.00	166.00	3.00	0.78	including
ZDDH0060	215.00	220.95	5.95	0.37	
ZDDH0061	157.00	158.00	1.00	2.31	
ZDDH0061	194.00	195.00	1.00	0.83	
ZDDH0062	8.00	70.00	62.00	0.46	
ZDDH0062	8.00	31.00	23.00	0.88	including
ZDDH0062	8.00	21.50	13.50	1.12	including
ZDDH0062	13.00	15.50	2.50	2.01	including
ZDDH0062	18.00	21.50	3.50	1.94	including
ZDDH0062	68.00	70.00	2.00	2.40	including
ZDDH0062	110.00	111.00	1.00	1.18	
ZDDH0062	119.00	120.00	1.00	2.36	
ZDDH0062	108.00	201.00	93.00	0.37	
ZDDH0062	129.00	173.00	44.00	0.53	including
ZDDH0062	134.00	141.00	7.00	0.76	including
ZDDH0062	162.20	172.00	9.80	1.30	including
ZDDH0062	225.00	226.00	1.00	1.40	
ZDDH0062	256.00	280.00	24.00	0.66	
ZDDH0062	256.00	261.00	5.00	2.29	including
ZDDH0063	0.00	3.00	3.00	2.26	
ZDDH0063	166.00	332.00	166.00	0.57	
ZDDH0063	169.00	171.00	2.00	1.20	including
ZDDH0063	180.00	210.00	30.00	0.90	including
ZDDH0063	180.00	182.00	2.00	7.52	including
ZDDH0063	197.00	210.00	13.00	0.75	including
ZDDH0063	277.00	316.00	39.00	1.22	including
ZDDH0063	300.00	316.00	16.00	2.96	including
ZDDH0063	311.00	316.00	5.00	9.09	including
ZDDH0064	102.00	103.70	1.70	1.43	
ZDDH0064	188.00	202.00	14.00	0.55	
ZDDH0064	192.00	196.00	4.00	1.33	including
ZDDH0064	243.00	244.00	1.00	1.11	
ZDDH0064	309.00	317.00	8.00	0.78	
ZDDH0064	311.00	314.00	3.00	1.53	
ZDDH0065	25.00	27.00	2.00	1.25	
ZDDH0065	56.40	58.80	2.40	0.78	
ZDDH0065	155.00	167.00	12.00	1.72	
ZDDH0066	306.00	465.00	159.00	0.46	including
ZDDH0066	306.00	443.00	137.00	0.51	including
ZDDH0066	389.00	436.00	47.00	1.00	including
ZDDH0066	308.00	310.00	2.00	1.98	including
ZDDH0066	357.00	362.00	5.00	1.10	including
ZDDH0066	357.50	361.00	3.50	1.43	including
ZDDH0066	389.00	412.00	23.00	1.09	including
ZDDH0066	389.00	401.00	12.00	1.59	including
ZDDH0066	389.00	392.00	3.00	2.97	including
ZDDH0066	424.00	443.00	19.00	1.24	including
ZDDH0066	427.00	436.00	9.00	2.14	including
ZDDH0067	5.00	64.00	59.00	1.72	

Hole_ID	From (m)	To (m)	Interval	Au (g/t)	Comments
ZDDH0067	5.00	37.40	32.40	3.05	including
ZDDH0067	31.00	37.00	6.00	15.18	including
ZDDH0067	81.00	82.00	1.00	1.87	
ZDDH0067	91.00	96.00	5.00	0.53	
ZDDH0067	107.00	121.00	14.00	0.47	
ZDDH0067	108.00	109.00	1.00	1.27	including
ZDDH0067	119.00	121.00	2.00	1.17	including
ZDDH0067	136.00	139.00	3.00	2.13	
ZDDH0068	0.00	7.00	7.00	0.45	
ZDDH0068	56.00	117.70	61.70	0.30	
ZDDH0068	60.00	83.00	23.00	0.46	including
ZDDH0068	60.00	61.00	1.00	2.43	including
ZDDH0068	74.00	75.00	1.00	1.14	including
ZDDH0068	114.90	117.70	2.80	0.84	including
ZDDH0068	143.00	154.00	11.00	0.62	
ZDDH0068	152.00	153.00	1.00	1.59	including
ZDDH0068	185.00	186.00	1.00	1.84	
ZDDH0068	189.00	190.00	1.00	1.37	
ZDDH0068	200.00	201.00	1.00	2.03	
ZDDH0068	209.00	210.00	1.00	4.42	
ZDDH0068	225.00	226.00	1.00	1.53	
ZDDH0068	303.00	303.93	0.93	1.14	
ZDDH0069	147.00	414.00	267.00	1.12	
ZDDH0069	221.00	414.00	193.00	1.47	including
ZDDH0069	224.00	404.00	180.00	1.57	including
ZDDH0069	234.00	366.00	132.00	1.89	including
ZDDH0069	147.00	162.00	15.00	0.68	including
ZDDH0069	147.00	152.00	5.00	1.24	including
ZDDH0069	184.00	184.50	0.50	8.69	including
ZDDH0069	234.00	258.00	24.00	1.72	including
ZDDH0069	244.00	248.00	4.00	4.94	including
ZDDH0069	289.00	345.00	56.00	3.49	including
ZDDH0069	292.00	337.00	45.00	4.02	including
ZDDH0069	289.00	322.00	33.00	5.07	including
ZDDH0069	292.00	320.50	28.50	5.68	including
ZDDH0069	314.00	320.50	6.50	7.28	including
ZDDH0069	292.00	303.00	11.00	7.73	including
ZDDH0069	392.50	401.00	8.50	2.49	including
ZDDH0069	398.00	400.00	2.00	7.89	including
ZDDH0070	1.50	24.00	22.50	0.34	
ZDDH0070	10.95	24.00	13.05	0.50	including
ZDDH0070	18.00	21.50	3.50	0.98	including
ZDDH0070	155.00	156.00	1.00	2.28	
ZDDH0071	25.00	96.00	71.00	0.80	
ZDDH0071	41.00	43.00	2.00	1.96	including
ZDDH0071	62.79	70.00	7.21	1.04	including
ZDDH0071	67.00	70.00	3.00	1.98	including
ZDDH0071	88.00	96.00	8.00	4.18	including
ZDDH0071	89.75	95.00	5.25	5.97	including
ZDDH0071	133.00	149.50	16.50	0.36	
ZDDH0071	139.00	146.50	7.50	0.55	including
ZDDH0071	255.00	255.50	0.50	2.69	
ZDDH0072	356.00	396.00	40.00	0.69	
ZDDH0072	366.20	372.20	6.00	1.89	including
ZDDH0072	366.20	368.00	1.80	5.50	including
ZDDH0072	383.00	384.00	1.00	5.01	including
ZDDH0072	393.00	394.00	1.00	8.39	including
ZDDH0073	21.40	23.00	1.60	0.62	
ZDDH0073	69.00	70.00	1.00	3.33	
ZDDH0073	93.00	95.00	2.00	2.04	
ZDDH0073	179.00	180.00	1.00	2.73	
ZDDH0073	207.00	285.00	78.00	0.41	
ZDDH0073	207.00	209.00	2.00	7.42	including
ZDDH0073	207.00	232.06	25.06	0.74	including
ZDDH0073	279.00	279.50	0.50	13.80	including
ZDDH0074	89.00	116.00	27.00	1.16	
ZDDH0074	89.00	94.00	5.00	2.15	including
ZDDH0074	114.00	116.00	2.00	8.06	including

Hole_ID	From (m)	To (m)	Interval	Au (g/t)	Comments
ZDDH0075	76.00	335.90	259.90	0.70	
ZDDH0075	89.00	309.00	220.00	0.86	including
ZDDH0075	97.00	100.00	3.00	2.63	including
ZDDH0075	124.00	127.00	3.00	2.40	including
ZDDH0075	137.00	140.00	3.00	1.49	including
ZDDH0075	153.50	155.00	1.50	5.99	including
ZDDH0075	178.00	187.00	9.00	1.02	including
ZDDH0075	217.00	220.00	3.00	1.18	including
ZDDH0075	236.00	238.00	2.00	1.56	including
ZDDH0075	249.00	251.00	2.00	1.03	including
ZDDH0075	270.00	309.00	39.00	2.73	including
ZDDH0075	270.00	296.00	26.00	3.54	including
ZDDH0075	270.00	285.50	15.50	5.49	including
ZDDH0075	304.00	309.00	5.00	2.72	including
ZDDH0075	328.00	338.80	10.80	1.44	including
ZDDH0075	336.00	338.80	2.80	4.97	including
ZDDH0076	145.00	146.00	1.00	0.57	
ZDDH0077	65.00	82.00	17.00	0.54	
ZDDH0077	74.00	78.00	4.00	1.13	including
ZDDH0077	69.60	70.60	1.00	1.91	including
ZDDH0077	121.70	122.50	0.80	1.56	
ZDDH0078	214.00	225.00	11.00	0.67	
ZDDH0078	214.33	216.00	1.67	3.46	including
ZDDH0078	263.00	265.00	2.00	1.54	
ZDDH0078	391.00	393.00	2.00	0.92	
ZDDH0079	33.00	34.00	1.00	1.33	
ZDDH0079	70.20	72.10	1.90	1.56	
ZDDH0079	165.60	166.00	0.40	4.26	
ZDDH0079	256.00	257.00	1.00	2.14	
ZDDH0079	272.00	273.00	1.00	1.26	
ZDDH0079	288.00	295.00	7.00	0.91	
ZDDH0079	290.00	294.00	4.00	1.19	including
ZDDH0080	108.00	121.00	13.00	1.17	
ZDDH0080	115.50	120.00	4.50	3.08	including
ZDDH0080	141.00	143.00	2.00	0.98	
ZDDH0080	254.50	255.00	0.50	1.19	
ZDDH0080	285.05	293.00	7.95	0.46	
ZDDH0080	286.00	287.50	1.50	1.01	including
ZDDH0081	82.00	110.00	28.00	1.90	
ZDDH0081	82.00	91.00	9.00	3.76	including
ZDDH0081	82.00	84.00	2.00	10.95	including
ZDDH0081	88.50	91.00	2.50	4.63	including
ZDDH0081	104.00	110.00	6.00	2.91	including
ZDDH0081	104.00	106.00	2.00	7.45	including
ZDDH0081	201.00	202.00	1.00	1.62	
ZDDH0082	151.00	153.00	2.00	3.30	
ZDDH0082	273.00	303.00	30.00	0.33	
ZDDH0082	294.00	295.00	1.00	2.88	
ZDDH0082	301.00	303.00	2.00	2.43	
ZDDH0083	180.00	190.10	10.10	0.92	
ZDDH0083	180.00	184.00	4.00	1.85	including
ZDDH0083	264.00	288.00	24.00	1.63	
ZDDH0083	273.00	288.00	15.00	2.55	including
ZDDH0083	273.00	280.00	7.00	4.48	including
ZDDH0083	276.00	280.00	4.00	7.25	including
ZDDH0083	336.00	339.00	3.00	1.21	
ZDDH0083	362.00	363.00	1.00	3.57	
ZDDH0083	395.00	409.00	14.00	1.11	
ZDDH0083	401.00	407.00	6.00	2.12	including
ZDDH0084	118.30	203.97	85.67	1.42	
ZDDH0084	124.00	144.70	20.70	3.81	including
ZDDH0084	125.00	136.00	11.00	5.49	including
ZDDH0084	162.00	169.50	7.50	3.85	including

Hole_ID	From (m)	To (m)	Interval	Au (g/t)	Comments
ZDDH0085	22.00	24.00	2.00	1.94	
ZDDH0085	85.00	153.00	68.00	0.47	
ZDDH0085	85.00	87.00	2.00	2.34	including
ZDDH0085	141.65	153.00	11.35	2.19	
ZDDH0085	147.00	151.00	4.00	5.38	
ZDDH0085	185.00	186.00	1.00	1.62	
ZDDH0085	219.00	318.00	99.00	0.49	
ZDDH0085	219.00	224.00	5.00	2.40	including
ZDDH0085	250.00	256.00	6.00	2.25	including
ZDDH0085	265.60	269.00	3.40	1.42	including
ZDDH0085	290.00	292.00	2.00	1.69	including
ZDDH0085	307.00	309.00	2.00	1.46	including
ZDDH0085	312.00	313.00	1.00	1.48	including
ZDDH0086	15.00	16.00	1.00	0.58	
ZDDH0086	36.00	38.00	2.00	0.30	
ZDDH0086	128.00	129.00	1.00	0.90	
ZDDH0086	135.00	137.00	2.00	0.51	
ZDDH0087	86.00	190.00	104.00	0.76	
ZDDH0087	86.00	131.00	45.00	1.57	including
ZDDH0087	86.00	116.00	30.00	2.24	including
ZDDH0087	90.00	107.00	17.00	3.62	including
ZDDH0087	187.00	189.00	2.00	1.12	
ZDDH0088	9.00	10.00	1.00	0.48	
ZDDH0088	22.50	23.50	1.00	0.49	
ZDDH0088	39.80	40.50	0.70	0.97	
ZDDH0088	90.00	92.00	2.00	0.57	
ZDDH0088	133.50	134.00	0.50	0.91	
ZDDH0088	180.00	181.00	1.00	69.70	
ZDDH0089	28.45	37.00	8.55	0.37	
ZDDH0089	29.00	33.00	4.00	0.49	
ZDDH0090	23.00	24.00	1.00	0.89	
ZDDH0090	43.00	83.00	40.00	0.53	
ZDDH0090	60.00	78.00	18.00	1.05	including
ZDDH0090	60.00	69.00	9.00	1.35	including
ZDDH0090	148.00	182.00	34.00	0.44	
ZDDH0090	148.00	149.00	1.00	1.86	including
ZDDH0090	157.00	159.00	2.00	5.42	including
ZDDH0090	223.00	224.00	1.00	3.99	
ZDDH0091	36.00	40.00	4.00	8.04	
ZDDH0091	36.00	38.00	2.00	14.44	including
ZDDH0091	73.00	85.50	12.50	0.33	
ZDDH0091	83.00	84.50	1.50	1.42	including
ZDDH0091	125.00	131.00	6.00	0.34	
ZDDH0091	172.00	173.00	1.00	0.47	
ZDDH0092	45.00	46.00	1.00	2.24	
ZDDH0092	86.00	87.00	1.00	10.88	
ZDDH0092	121.00	123.94	2.94	1.11	
ZDDH0092	282.00	382.00	100.00	0.48	
ZDDH0092	282.00	292.00	10.00	1.43	including
ZDDH0092	305.00	326.00	21.00	0.58	including
ZDDH0092	311.00	319.00	8.00	1.08	including
ZDDH0092	331.00	332.00	1.00	1.12	including
ZDDH0092	369.00	371.00	2.00	2.31	including
ZDDH0092	378.00	379.00	1.00	1.25	including
ZDDH0093	25.60	27.05	1.45	15.94	
ZDDH0093	116.00	117.00	1.00	1.85	
ZDDH0093	132.00	150.00	18.00	0.51	
ZDDH0093	136.00	142.00	6.00	1.16	including
ZDDH0093	165.00	175.00	10.00	0.74	
ZDDH0093	170.00	173.00	3.00	1.86	including
ZDDH0093	190.47	194.18	3.71	0.79	
ZDDH0093	268.00	270.00	2.00	1.10	
ZDDH0093	279.00	304.00	25.00	0.77	
ZDDH0093	279.00	281.00	2.00	1.40	including
ZDDH0093	290.00	304.00	14.00	1.08	including
ZDDH0093	298.00	304.00	6.00	2.24	including

Hole_ID	From (m)	To (m)	Interval	Au (g/t)	Comments
ZDDH0094	37.00	40.00	3.00	2.41	
ZDDH0094	83.49	105.00	21.51	0.71	
ZDDH0094	86.30	91.00	4.70	1.02	
ZDDH0094	100.00	105.00	5.00	1.64	
ZDDH0094	298.00	346.00	48.00	0.67	
ZDDH0094	298.00	299.00	1.00	1.54	including
ZDDH0094	319.00	323.00	4.00	6.45	including
ZDDH0094	343.00	344.00	1.00	1.03	including
ZDDH0094	375.00	375.50	0.50	1.51	
ZDDH0095	106.00	108.00	2.00	0.62	
ZDDH0095	135.95	136.50	0.55	1.52	
ZDDH0095	212.50	224.00	11.50	1.13	
ZDDH0095	212.50	214.07	1.57	7.37	including
ZDDH0096	29.00	47.00	18.00	0.46	
ZDDH0096	39.00	46.00	7.00	0.79	including
ZDDH0096	112.00	113.50	1.50	0.98	
ZDDH0096	155.00	157.50	2.50	0.83	
ZDDH0096	185.00	187.00	2.00	1.59	
ZDDH0096	190.00	191.00	1.00	1.41	
ZDDH0096	261.00	267.00	6.00	0.64	
ZDDH0096	261.00	262.00	1.00	2.21	including
ZDDH0097	9.00	10.00	1.00	2.95	
ZDDH0097	89.00	90.00	1.00	2.15	
ZDDH0098	1.20	3.00	1.80	1.25	
ZDDH0098	74.00	124.00	50.00	1.73	
ZDDH0098	74.00	76.00	2.00	13.95	including
ZDDH0098	97.00	103.00	6.00	8.47	including
ZDDH0098	166.00	203.00	37.00	0.62	
ZDDH0098	168.15	172.82	4.67	1.88	including
ZDDH0098	190.00	203.00	13.00	0.98	including
ZDDH0098	199.00	203.00	4.00	2.40	including
ZDDH0099	10.00	11.00	1.00	3.57	
ZDDH0099	90.80	157.00	66.20	0.53	
ZDDH0099	96.00	111.00	15.00	1.36	
ZDDH0099	138.00	139.00	1.00	1.13	
ZDDH0099	148.00	148.80	0.80	3.43	
ZDDH0099	178.00	178.90	0.90	6.53	
ZDDH0099	251.00	252.00	1.00	1.11	
ZDDH0099	319.40	328.00	8.60	0.58	
ZDDH0099	319.40	322.00	2.60	1.32	
ZDDH0099	342.00	343.00	1.00	1.13	
ZDDH0100	8.00	9.00	1.00	1.08	
ZDDH0100	21.00	56.00	35.00	1.07	
ZDDH0100	29.10	54.50	25.40	1.39	including
ZDDH0100	29.10	31.00	1.90	10.30	including
ZDDH0100	105.00	106.00	1.00	5.86	
ZDDH0100	144.50	157.00	12.50	0.75	
ZDDH0100	147.00	148.00	1.00	4.99	including
ZDDH0100	155.00	157.00	2.00	1.51	including
ZDDH0100	193.00	194.00	1.00	1.45	
ZDDH0101	80.00	81.87	1.87	0.82	
ZDDH0101	133.00	202.00	69.00	0.95	
ZDDH0101	133.00	180.00	47.00	1.21	including
ZDDH0101	136.00	159.40	23.40	1.76	including
ZDDH0101	196.00	197.00	1.00	4.14	including
ZDDH0101	258.00	286.56	28.56	1.30	
ZDDH0101	275.50	285.00	9.50	3.05	including
ZDDH0101	280.00	284.00	4.00	5.94	including
ZDDH0102	187.50	202.00	14.50	0.28	
ZDDH0102	189.00	190.00	1.00	1.46	including
ZDDH0103	4.50	9.00	4.50	0.35	
ZDDH0103	31.20	31.60	0.40	3.48	
ZDDH0103	88.00	102.00	14.00	1.42	
ZDDH0103	88.00	93.60	5.60	3.01	including

Hole_ID	From (m)	To (m)	Interval	Au (g/t)	Comments
ZDDH0103	133.00	133.76	0.76	1.50	
ZDDH0103	140.00	141.00	1.00	4.26	
ZDDH0103	168.00	180.00	12.00	0.40	
ZDDH0103	178.70	180.00	1.30	1.76	including
ZDDH0103	226.00	228.00	2.00	0.56	
ZDDH0104	174.91	216.00	41.09	0.95	
ZDDH0104	174.91	197.00	22.09	1.50	including
ZDDH0104	183.00	197.00	14.00	1.87	including
ZDDH0105	284.00	285.00	1.00	0.69	
ZDDH0105	375.00	376.00	1.00	7.55	
ZDDH0105	414.00	415.00	1.00	1.12	
ZDDH0107	14.10	16.28	2.18	1.15	
ZDDH0107	35.70	48.00	12.30	0.70	
ZDDH0107	37.00	39.00	2.00	2.31	including
ZDDH0107	46.00	48.00	2.00	1.08	
ZDDH0107	359.00	382.00	23.00	0.57	
ZDDH0107	372.00	381.00	9.00	1.16	including
ZDDH0107	353.00	354.00	1.00	1.28	
ZDDH0108	25.00	26.00	1.00	0.52	
ZDDH0108	53.70	142.00	88.30	0.30	
ZDDH0108	60.00	61.00	1.00	3.95	
ZDDH0108	72.41	76.00	3.59	1.22	
ZDDH0108	90.00	93.00	3.00	2.17	
ZDDH0108	114.00	114.40	0.40	1.24	
ZDDH0109	195.00	266.00	71.00	0.47	
ZDDH0109	195.00	222.00	27.00	0.95	including
ZDDH0109	195.00	207.00	12.00	1.39	including
ZDDH0109	220.00	221.40	1.40	5.91	including
ZDDH0109	291.00	294.00	3.00	1.57	
ZDDH0109	299.00	300.00	1.00	1.09	
ZDDH0109	328.00	329.00	1.00	1.52	
ZDDH0109	364.00	365.00	1.00	4.85	
ZDDH0109	411.00	412.00	1.00	0.99	
ZDDH0110	80.00	100.00	20.00	1.48	
ZDDH0110	80.00	92.00	12.00	1.99	including
ZDDH0110	82.50	88.00	5.50	3.37	including
ZDDH0110	114.00	120.00	6.00	0.53	
ZDDH0110	117.00	118.00	1.00	1.39	including
ZDDH0110	186.00	187.00	1.00	1.10	
ZDDH0110	194.00	195.00	1.00	1.33	
ZDDH0111	8.00	130.00	122.00	0.43	
ZDDH0111	8.00	10.00	2.00	0.71	including
ZDDH0111	19.00	27.00	8.00	0.65	including
ZDDH0111	21.00	22.00	1.00	2.30	including
ZDDH0111	27.00	28.00	1.00	1.57	including
ZDDH0111	43.00	54.00	11.00	0.34	including
ZDDH0111	85.00	86.00	1.00	3.01	including
ZDDH0111	98.00	109.00	11.00	2.16	including
ZDDH0111	120.00	125.00	5.00	1.35	including
ZDDH0112	130.00	132.00	2.00	0.47	
ZDDH0112	154.00	155.00	1.00	11.90	
ZDDH0112	240.00	241.00	1.00	1.08	
ZDDH0113	84.00	89.00	5.00	2.45	
ZDDH0113	84.00	85.50	1.50	7.85	including
ZDDH0113	230.00	231.10	1.10	0.85	
ZDDH0114	26.50	27.20	0.70	0.40	
ZDDH0114	47.20	53.00	5.80	0.47	
ZDDH0114	49.00	51.00	2.00	0.85	
ZDDH0114	69.00	71.00	2.00	0.44	
ZDDH0114	97.00	106.90	9.90	0.57	
ZDDH0114	103.00	105.00	2.00	1.74	including
ZDDH0114	164.00	165.00	1.00	1.00	
ZDDH0114	223.00	229.00	6.00	2.29	
ZDDH0114	224.00	227.00	3.00	4.36	including

Hole_ID	From (m)	To (m)	Interval	Au (g/t)	Comments
ZDDH0115	235.00	236.00	1.00	0.43	
ZDDH0115	311.00	318.00	7.00	1.00	
ZDDH0115	312.00	313.00	1.00	3.33	
ZDDH0116	59.00	60.00	1.00	5.76	
ZDDH0116	65.88	67.27	1.39	0.49	
ZDDH0117	162.00	163.00	1.00	1.20	
ZDDH0117	190.80	201.00	10.20	0.65	
ZDDH0117	190.80	191.50	0.70	5.03	including
ZDDH0117	198.00	201.00	3.00	1.00	including
ZDDH0117	225.00	227.00	2.00	0.46	
ZDDH0117	261.00	285.00	24.00	0.58	
ZDDH0117	268.00	281.00	13.00	0.88	including
ZDDH0117	268.00	270.00	2.00	1.50	including
ZDDH0117	280.00	281.00	1.00	4.12	including
ZDDH0118					No Significant
ZDDH0119	4.60	6.60	2.00	0.52	
ZDDH0119	20.00	26.00	6.00	0.50	
ZDDH0119	20.00	21.00	1.00	1.69	
ZDDH0119	261.00	262.00	1.00	1.18	
ZDDH0119	269.00	270.00	1.00	1.48	
ZDDH0119	326.00	374.00	48.00	0.53	
ZDDH0119	350.00	374.00	24.00	1.02	including
ZDDH0119	355.00	374.00	19.00	1.22	including
ZDDH0119	355.00	359.50	4.50	2.97	including
ZDDH0119	365.00	366.00	1.00	2.64	including
ZDDH0119	373.00	374.00	1.00	4.22	including
ZDDH0120	229.00	232.00	3.00	1.47	
ZDDH0120	317.00	318.00	1.00	15.30	
ZDDH0120	351.00	352.00	1.00	1.16	
ZDDH0120	371.00	378.00	7.00	0.61	
ZDDH0120	376.00	377.00	1.00	1.39	including
ZDDH0120	383.00	384.00	1.00	1.03	
ZDDH0120	387.00	388.00	1.00	1.27	
ZDDH0120	396.00	397.00	1.00	1.02	
ZDDH0120	412.00	415.00	3.00	0.41	
ZDDH0121	35.00	41.00	6.00	0.47	
ZDDH0121	35.00	36.00	1.00	1.07	including
ZDDH0121	60.00	91.50	31.50	0.34	
ZDDH0121	66.00	73.50	7.50	0.59	including
ZDDH0121	66.00	67.00	1.00	1.11	including
ZDDH0121	72.50	73.20	0.70	3.27	including
ZDDH0121	79.00	80.00	1.00	1.40	including
ZDDH0121	86.50	88.00	1.50	2.31	including
ZDDH0121	230.00	231.00	1.00	2.94	including
ZDDH0122	3.00	7.10	4.10	0.38	
ZDDH0122	36.50	37.39	0.89	0.87	
ZDDH0122	43.00	44.00	1.00	0.87	
ZDDH0122	85.00	85.65	0.65	1.11	
ZDDH0122	155.00	156.00	1.00	0.84	
ZDDH0123	70.00	98.00	28.00	0.87	
ZDDH0123	76.00	77.00	1.00	1.93	including
ZDDH0123	84.07	87.00	2.93	5.38	including
ZDDH0123	200.00	204.00	4.00	0.85	
ZDDH0123	203.00	204.00	1.00	1.48	including
ZDDH0123	215.00	221.00	6.00	1.51	
ZDDH0123	242.60	243.20	0.60	1.16	
ZDDH0123	360.00	361.00	1.00	3.55	
ZDDH0123	383.00	384.00	1.00	0.78	
ZDDH0124	23.40	23.90	0.50	2.02	
ZDDH0124	99.00	100.95	1.95	0.88	
ZDDH0124	99.00	100.00	1.00	1.50	including
ZDDH0124	152.00	223.00	71.00	1.63	
ZDDH0124	152.00	191.00	39.00	2.59	including
ZDDH0124	152.00	171.00	19.00	5.07	including

Hole_ID	From (m)	To (m)	Interval	Au (g/t)	Comments	Hole_ID	From (m)	To (m)	Interval	Au (g/t)	Comments
ZDDH0124	152.00	159.00	7.00	11.98	including	ZDDH0131	136.00	140.00	4.00	2.46	including
ZDDH0124	221.00	223.00	2.00	6.43	including	ZDDH0131	176.00	177.00	1.00	38.30	
ZDDH0124	256.00	257.00	1.00	1.17		ZDDH0131	180.00	181.00	1.00	0.84	
ZDDH0125	263.90	264.35	0.45	1.07		ZDDH0131	190.00	191.00	1.00	0.55	
ZDDH0125	316.50	369.00	52.50	1.37		ZDDH0131	197.00	198.00	1.00	0.51	
ZDDH0125	338.00	359.00	21.00	2.72	including	ZDDH0131	228.00	237.00	9.00	0.47	
ZDDH0125	344.00	355.00	11.00	4.14	including	ZDDH0131	234.00	235.00	1.00	1.94	including
ZDDH0125	317.00	318.50	1.50	1.67	including	ZDDH0131	290.00	291.00	1.00	1.02	
ZDDH0125	323.50	324.10	0.60	1.39	including	ZDDH0131	298.00	299.00	1.00	0.72	
ZDDH0125	327.00	329.00	2.00	1.07	including	ZDDH0131	326.00	327.00	1.00	0.94	
ZDDH0125	344.00	347.00	3.00	5.69	including	ZDDH0131	343.00	344.00	1.00	0.89	
ZDDH0125	349.00	355.00	6.00	4.39	including	ZDDH0131	457.00	458.00	1.00	1.00	
ZDDH0126	9.00	38.00	29.00	0.30		ZDDH0132	148.00	149.00	1.00	1.20	
ZDDH0126	19.00	20.10	1.10	1.22	including	ZDDH0133	47.00	48.00	1.00	0.92	
ZDDH0126	35.77	37.00	1.23	3.58	including	ZDDH0133	112.00	117.00	5.00	0.41	
ZDDH0126	93.00	128.00	35.00	0.40		ZDDH0133	115.00	116.00	1.00	1.22	including
ZDDH0126	97.00	103.00	6.00	1.63	including	ZDDH0133	138.00	139.00	1.00	1.21	
ZDDH0126	144.00	145.00	1.00	2.95		ZDDH0133	154.00	155.00	1.00	1.39	
ZDDH0126	251.00	262.00	11.00	0.83		ZDDH0133	229.00	230.00	1.00	4.42	
ZDDH0126	251.00	257.00	6.00	1.38	including	ZDDH0133	249.00	318.00	69.00	0.54	
ZDDH0126	278.90	282.00	3.10	0.51		ZDDH0133	267.00	294.00	27.00	1.18	including
ZDDH0126	300.00	301.00	1.00	2.63		ZDDH0133	267.00	275.00	8.00	3.17	including
ZDDH0126	325.00	388.00	63.00	0.39		ZDDH0133	292.00	293.00	1.00	2.31	including
ZDDH0126	337.00	338.00	1.00	1.02	including	ZDDH0133	333.00	334.00	1.00	1.44	
ZDDH0126	350.00	353.90	3.90	1.09	including	ZDDH0133	339.00	340.00	1.00	0.97	
ZDDH0126	370.00	371.00	1.00	1.13	including	ZDDH0133	355.00	356.00	1.00	1.19	
ZDDH0126	377.63	388.00	10.37	1.04	including	ZDDH0133	404.00	405.00	1.00	1.72	
ZDDH0126	385.00	388.00	3.00	2.76	including	ZDDH0133	438.00	439.00	1.00	0.96	
ZDDH0126	410.00	411.00	1.00	0.95		ZDDH0135	203.00	205.00	2.00	0.52	
ZDDH0126	415.00	416.00	1.00	1.24		ZDDH0135	299.00	300.00	1.00	1.21	
ZDDH0126	463.00	469.00	6.00	0.78		ZDDH0135	334.00	346.00	12.00	3.34	
ZDDH0126	464.00	466.00	2.00	1.24		ZDDH0135	334.00	335.50	1.50	25.22	including
ZDDH0126	468.00	469.00	1.00	1.94		ZDDH0135	345.00	346.00	1.00	1.29	including
ZDDH0127	20.00	49.00	29.00	0.57		ZDDH0136	56.00	57.00	1.00	1.05	
ZDDH0127	23.00	24.00	1.00	2.96	including	ZDDH0136	221.00	222.00	1.00	0.57	
ZDDH0127	45.00	46.50	1.50	3.77	including	ZDDH0136	239.00	346.00	107.00	0.49	
ZDDH0127	97.40	102.00	4.60	0.47		ZDDH0136	252.00	253.00	1.00	1.10	including
ZDDH0127	113.00	123.00	10.00	0.63		ZDDH0136	287.00	324.00	37.00	1.01	including
ZDDH0127	116.20	117.00	0.80	1.55	including	ZDDH0136	309.00	315.00	6.00	1.45	including
ZDDH0127	137.00	138.17	1.17	14.39		ZDDH0136	387.50	388.05	0.55	3.11	
ZDDH0127	205.35	206.20	0.85	2.06		ZDDH0136	415.00	416.00	1.00	2.89	
ZDDH0127	248.00	249.00	1.00	1.18		ZDDH0136	445.00	447.00	2.00	3.53	
ZDDH0127	305.00	307.00	2.00	0.75		ZDDH0137	234.00	235.00	1.00	0.43	
ZDDH0128	78.29	79.20	0.91	7.59		ZDDH0137	237.50	239.00	1.50	0.78	
ZDDH0128	103.00	110.00	7.00	3.22		ZDDH0137	238.18	239.00	0.82	1.09	including
ZDDH0128	106.00	108.90	2.90	6.95	including	ZDDH0137	269.00	272.00	3.00	0.66	
ZDDH0128	249.00	250.00	1.00	3.04		ZDDH0137	270.00	271.00	1.00	1.45	including
ZDDH0128	289.00	290.00	1.00	1.08		ZDDH0137	337.00	342.00	5.00	0.87	
ZDDH0128	316.00	317.00	1.00	1.77		ZDDH0137	338.00	341.00	3.00	1.07	including
ZDDH0128	368.00	371.00	3.00	3.87		ZDDH0138	193.00	194.00	1.00	0.46	
ZDDH0129	272.00	276.20	4.20	0.41		ZDDH0138	285.30	292.00	6.70	0.33	
ZDDH0129	324.00	350.00	26.00	0.49		ZDDH0138	285.30	286.00	0.70	1.47	including
ZDDH0129	324.00	325.00	1.00	1.57	including	ZDDH0139	14.00	15.00	1.00	3.80	
ZDDH0129	330.00	331.00	1.00	0.91	including	ZDDH0139	23.30	26.00	2.70	1.06	
ZDDH0129	331.50	332.00	0.50	2.21	including	ZDDH0139	25.00	26.00	1.00	2.40	including
ZDDH0129	341.00	342.00	1.00	1.53	including	ZDDH0139	58.00	105.50	47.50	0.53	
ZDDH0129	347.00	348.00	1.00	5.13	including	ZDDH0139	63.00	66.00	3.00	2.54	including
ZDDH0130	20.00	29.00	9.00	0.57		ZDDH0139	92.00	105.50	13.50	0.99	including
ZDDH0130	20.00	21.00	1.00	1.91		ZDDH0139	92.00	98.00	6.00	1.31	including
ZDDH0130	28.00	29.00	1.00	2.04		ZDDH0139	145.00	154.90	9.90	0.51	
ZDDH0130	230.00	231.00	1.00	3.24		ZDDH0139	145.10	147.00	1.90	1.45	including
ZDDH0131	93.00	95.00	2.00	0.60		ZDDH0139	166.52	167.00	0.48	1.55	
ZDDH0131	119.00	144.00	25.00	2.11		ZDDH0139	286.00	297.00	11.00	0.62	
ZDDH0131	120.00	120.59	0.59	63.10	including	ZDDH0139	291.10	293.00	1.90	1.86	including

Hole_ID	From (m)	To (m)	Interval	Au (g/t)	Comments
ZDDH0140	72.50	85.36	12.86	0.65	
ZDDH0140	77.60	81.76	4.16	1.34	including
ZDDH0140	105.05	106.65	1.60	1.19	
ZDDH0140	162.45	163.38	0.93	1.01	
ZDDH0140	190.00	196.00	6.00	0.94	
ZDDH0140	195.00	196.00	1.00	3.04	including
ZDDH0140	239.00	241.00	2.00	2.22	
ZDDH0140	361.00	367.00	6.00	1.19	
ZDDH0140	361.00	362.00	1.00	5.15	including
ZDDH0141	102.00	154.60	52.60	0.45	
ZDDH0141	116.00	118.60	2.60	1.18	including
ZDDH0141	131.88	132.50	0.62	5.19	including
ZDDH0141	144.83	147.24	2.41	5.88	including
ZDDH0141	263.00	263.54	0.54	6.48	
ZDDH0141	399.00	399.50	0.50	1.40	
ZDDH0141	447.50	448.00	0.50	1.25	
ZDDH0142	145.50	149.00	3.50	0.51	
ZDDH0142	148.00	149.00	1.00	1.43	including
ZDDH0142	163.00	164.00	1.00	1.20	
ZDDH0142	170.00	171.00	1.00	0.86	
ZDDH0142	176.00	181.00	5.00	1.15	
ZDDH0142	176.00	178.00	2.00	2.24	including
ZDDH0142	227.00	237.83	10.83	0.51	
ZDDH0142	237.00	237.83	0.83	1.25	including
ZDDH0142	247.00	248.00	1.00	2.63	
ZDDH0142	258.00	259.05	1.05	0.53	
ZDDH0142	283.00	287.00	4.00	0.96	
ZDDH0142	283.00	284.00	1.00	1.56	including
ZDDH0142	286.00	287.00	1.00	2.22	including
ZDDH0143	65.00	81.92	16.92	0.60	
ZDDH0143	72.00	81.00	9.00	0.91	including
ZDDH0143	72.00	75.00	3.00	1.43	including
ZDDH0143	205.26	212.00	6.74	1.69	
ZDDH0143	210.00	211.00	1.00	8.93	including
ZDDH0143	284.00	290.00	6.00	0.85	
ZDDH0143	285.00	286.00	1.00	4.27	including
ZDDH0143	310.00	312.00	2.00	0.48	
ZDDH0144	14.00	16.18	2.18	1.30	
ZDDH0144	40.00	42.00	2.00	2.30	
ZDDH0144	55.00	68.00	13.00	0.37	
ZDDH0144	65.35	67.00	1.65	1.33	including
ZDDH0144	82.50	104.00	21.50	0.41	
ZDDH0144	98.00	101.00	3.00	1.30	including
ZDDH0144	106.00	107.00	1.00	1.11	including
ZDDH0144	153.00	158.00	5.00	0.98	
ZDDH0144	154.00	155.00	1.00	0.46	including
ZDDH0144	157.00	158.00	1.00	1.90	including
ZDDH0144	222.00	223.00	1.00	1.76	
ZDDH0144	291.00	304.00	13.00	0.75	
ZDDH0144	291.00	292.00	1.00	1.22	including
ZDDH0144	299.00	303.00	4.00	1.95	including
ZDDH0145	102.00	154.60	52.60	0.45	
ZDDH0145	116.00	118.60	2.60	1.18	including
ZDDH0145	131.88	132.50	0.62	5.19	including
ZDDH0145	144.83	147.24	2.41	5.88	including
ZDDH0145	263.00	263.54	0.54	6.48	
ZDDH0145	399.00	399.50	0.50	1.40	
ZDDH0145	447.50	448.00	0.50	1.25	
ZDDH0146	11.80	20.00	8.20	1.63	
ZDDH0146	11.80	14.00	2.20	5.50	including
ZDDH0146	86.60	87.60	1.00	1.00	
ZDDH0146	89.00	92.10	3.10	1.44	including
ZDDH0146	204.26	217.00	12.74	0.58	
ZDDH0146	211.00	217.00	6.00	0.83	including

Hole_ID	From (m)	To (m)	Interval	Au (g/t)	Comments
ZDDH0146	216.00	217.00	1.00	2.02	including
ZDDH0146	338.00	339.00	1.00	0.88	
ZDDH0146	388.00	390.00	2.00	0.58	
ZDDH0147	4.00	32.30	28.30	0.48	
ZDDH0147	22.00	32.30	10.30	1.02	including
ZDDH0147	29.00	32.30	3.30	2.29	including
ZDDH0147	71.90	73.00	1.10	3.05	
ZDDH0147	85.00	85.80	0.80	0.99	
ZDDH0147	111.00	112.00	1.00	1.56	
ZDDH0147	161.00	162.00	1.00	1.05	
ZDDH0147	244.00	256.00	12.00	0.48	
ZDDH0147	255.00	256.00	1.00	2.05	including
ZDDH0148	33.00	34.00	1.00	1.03	
ZDDH0148	50.00	51.00	1.00	0.77	
ZDDH0148	69.00	78.00	9.00	0.62	
ZDDH0148	71.00	74.00	3.00	1.17	including
ZDDH0148	99.00	102.00	3.00	0.46	
ZDDH0148	124.15	124.76	0.61	0.83	
ZDDH0148	167.00	170.00	3.00	1.30	
ZDDH0148	179.00	183.00	4.00	0.45	
ZDDH0148	189.00	193.00	4.00	0.65	
ZDDH0148	189.00	190.00	1.00	1.17	including
ZDDH0148	211.50	218.00	6.50	0.53	
ZDDH0148	211.50	212.48	0.98	1.32	including
ZDDH0148	215.90	216.75	0.85	1.08	including
ZDDH0148	259.70	267.00	7.30	1.56	including
ZDDH0148	259.70	263.00	3.30	3.24	including
ZDDH0148	289.00	289.55	0.55	2.59	
ZDDH0149	97.50	118.78	21.28	0.34	
ZDDH0149	105.00	109.50	4.50	1.14	
ZDDH0149	108.00	109.50	1.50	2.16	
ZDDH0149	243.00	279.00	36.00	0.40	
ZDDH0149	248.00	259.00	11.00	0.81	
ZDDH0149	249.00	253.00	4.00	1.69	
ZDDH0149	249.00	251.00	2.00	2.38	
ZDDH0149	272.95	275.50	2.55	0.96	
ZDDH0149	272.95	274.00	1.05	1.77	
ZDDH0150	2.00	3.00	1.00	0.57	
ZDDH0150	20.00	34.00	14.00	0.66	
ZDDH0150	33.00	34.00	1.00	7.38	including
ZDDH0150	60.00	73.00	13.00	0.73	
ZDDH0150	64.00	66.00	2.00	2.44	including
ZDDH0150	72.00	73.00	1.00	3.28	including
ZDDH0150	170.00	171.00	1.00	2.60	
ZDDH0150	249.00	292.50	43.50	0.86	
ZDDH0150	249.00	250.00	1.00	2.02	including
ZDDH0150	265.00	276.00	11.00	1.33	including
ZDDH0150	259.00	260.00	1.00	2.47	including
ZDDH0150	269.00	270.00	1.00	2.91	including
ZDDH0150	289.00	292.50	3.50	3.11	including
ZDDH0151	1.50	6.00	4.50	1.29	Hole abandoned
ZDDH0152	5.00	16.00	11.00	0.93	
ZDDH0152	9.91	16.00	6.09	1.52	including
ZDDH0152	9.91	11.65	1.74	2.77	including
ZDDH0152	47.30	47.90	0.60	0.60	
ZDDH0152	104.60	105.10	0.50	2.31	
ZDDH0152	141.35	170.00	28.65	0.34	
ZDDH0152	149.00	150.00	1.00	4.39	including
ZDDH0152	155.00	167.40	12.40	0.64	including
ZDDH0153	14.20	66.00	51.80	0.24	
ZDDH0153	14.20	44.20	30.00	0.31	including
ZDDH0153	14.20	15.00	0.80	0.81	including
ZDDH0153	26.00	29.00	3.00	0.77	including
ZDDH0153	28.00	29.00	1.00	1.05	including

Hole_ID	From (m)	To (m)	Interval	Au (g/t)	Comments	Hole_ID	From (m)	To (m)	Interval	Au (g/t)	Comments
ZDDH0153	49.00	50.00	1.00	1.01	including	ZDDH0164	23.00	24.50	1.50	0.62	
ZDDH0153	64.00	66.00	2.00	0.97	including	ZDDH0164	28.00	29.00	1.00	0.56	
ZDDH0154	3.45	43.00	39.55	1.31		ZDDH0164	97.00	119.88	22.88	0.51	
ZDDH0154	8.00	13.00	5.00	5.66	including	ZDDH0164	97.00	107.00	10.00	0.95	including
ZDDH0154	82.00	83.00	1.00	7.02		ZDDH0164	98.00	100.00	2.00	3.79	including
ZDDH0154	109.00	176.00	67.00	3.44		ZDDH0164	119.00	119.88	0.88	1.37	including
ZDDH0154	117.50	131.00	13.50	15.84	including	ZDDH0164	179.00	277.00	98.00	0.75	
ZDDH0154	168.00	176.00	8.00	1.22	including	ZDDH0164	179.00	232.00	53.00	1.05	including
ZDDH0155	56.00	57.00	1.00	2.01		ZDDH0164	179.00	199.00	20.00	2.15	including
ZDDH0155	113.00	127.00	14.00	1.13		ZDDH0164	179.00	183.00	4.00	7.79	including
ZDDH0155	121.00	122.00	1.00	11.90	including	ZDDH0164	271.00	275.00	4.00	2.24	including
ZDDH0155	142.00	143.00	1.00	1.22		ZDDH0164	346.00	347.00	1.00	5.44	
ZDDH0156	100.00	140.00	40.00	0.38		ZDDH0165	5.00	30.00	25.00	0.96	
ZDDH0156	100.00	101.00	1.00	1.19	including	ZDDH0165	6.00	11.00	5.00	2.24	including
ZDDH0156	111.00	112.00	1.00	2.38	including	ZDDH0165	25.50	28.80	3.30	2.96	including
ZDDH0156	118.00	123.00	5.00	1.23	including	ZDDH0165	64.20	73.00	8.80	0.82	
ZDDH0156	128.45	131.00	2.55	0.77	including	ZDDH0165	69.00	71.00	2.00	2.08	including
ZDDH0156	139.00	140.00	1.00	1.88	including	ZDDH0165	85.00	86.00	1.00	1.06	
ZDDH0157	21.00	22.00	1.00	0.43		ZDDH0165	187.00	188.00	1.00	0.87	
ZDDH0157	107.34	109.00	1.66	1.08		ZDDH0165	241.00	242.00	1.00	1.53	
ZDDH0158	37.00	56.00	19.00	0.58		ZDDH0165	268.00	270.00	2.00	2.89	
ZDDH0158	38.00	40.00	2.00	4.53	including	ZDDH0165	301.00	302.00	1.00	0.90	
ZDDH0159	33.00	34.00	1.00	0.84		ZDDH0165	317.00	317.56	0.56	2.46	
ZDDH0159	80.60	82.10	1.50	1.86		ZDDH0166	55.00	56.00	1.00	1.35	
ZDDH0159	181.00	181.65	0.65	2.78		ZDDH0166	297.00	334.00	37.00	0.49	
ZDDH0159	237.00	238.00	1.00	0.76		ZDDH0166	297.00	308.00	11.00	0.92	including
ZDDH0160	36.00	58.00	22.00	0.50		ZDDH0166	298.50	306.00	7.50	1.15	including
ZDDH0160	36.90	39.00	2.10	1.75	including	ZDDH0166	305.00	306.00	1.00	3.68	including
ZDDH0160	80.00	81.30	1.30	1.04		ZDDH0166	329.00	332.50	3.50	1.54	including
ZDDH0160	178.00	179.00	1.00	1.14		ZDDH0167	69.00	70.00	1.00	1.10	
ZDDH0160	233.00	237.12	4.12	0.79		ZDDH0167	103.00	140.00	37.00	0.43	
ZDDH0160	233.00	234.00	1.00	2.20	including	ZDDH0167	112.40	119.00	6.60	0.80	including
ZDDH0160	236.50	237.12	0.62	1.29	including	ZDDH0167	131.00	135.00	4.00	1.15	including
ZDDH0160	304.00	310.80	6.80	0.86		ZDDH0168	2.00	42.00	40.00	2.11	
ZDDH0160	306.00	308.00	2.00	2.08	including	ZDDH0168	2.00	19.50	17.50	4.51	including
ZDDH0161	74.00	201.00	127.00	0.67		ZDDH0168	5.00	7.00	2.00	1.87	including
ZDDH0161	74.00	75.00	1.00	3.19	including	ZDDH0168	12.00	19.50	7.50	9.19	including
ZDDH0161	85.00	90.96	5.96	1.42	including	ZDDH0168	39.00	40.00	1.00	1.87	including
ZDDH0161	112.00	143.00	31.00	1.64	including	ZDDH0168	106.00	110.70	4.70	0.53	
ZDDH0161	115.00	137.00	22.00	2.16	including	ZDDH0168	109.00	110.05	1.05	1.16	including
ZDDH0161	115.00	116.95	1.95	7.49	including	ZDDH0168	219.00	220.00	1.00	0.74	
ZDDH0161	132.00	143.00	11.00	2.97	including	ZDDH0169	53.00	125.00	72.00	0.52	
ZDDH0161	132.00	138.00	6.00	4.94	including	ZDDH0169	53.00	54.90	1.90	1.50	including
ZDDH0161	150.45	150.80	0.35	3.35	including	ZDDH0169	73.00	75.00	2.00	1.17	including
ZDDH0161	160.00	161.00	1.00	2.31	including	ZDDH0169	107.30	123.00	15.70	1.87	including
ZDDH0161	176.00	177.00	1.00	1.47	including	ZDDH0169	107.30	116.58	9.28	3.00	including
ZDDH0161	195.00	200.00	5.00	2.44	including	ZDDH0169	201.00	202.00	1.00	1.02	
ZDDH0161	247.00	248.00	1.00	1.01		ZDDH0169	237.00	261.00	24.00	0.66	
ZDDH0161	294.00	300.28	6.28	0.61		ZDDH0169	238.00	253.00	15.00	0.98	including
ZDDH0161	294.00	296.00	2.00	1.26	including	ZDDH0169	238.00	242.00	4.00	1.63	including
ZDDH0161	311.00	312.00	1.00	1.14		ZDDH0169	248.00	252.00	4.00	1.07	including
ZDDH0162	63.00	74.00	11.00	0.57		ZDDH0169	284.34	288.00	3.66	0.88	
ZDDH0162	63.00	65.00	2.00	1.18	including	ZDDH0170	9.00	214.00	205.00	0.96	
ZDDH0162	73.00	74.00	1.00	1.68	including	ZDDH0170	9.00	17.00	8.00	1.30	including
ZDDH0162	102.00	109.00	7.00	0.51		ZDDH0170	21.00	22.00	1.00	1.05	including
ZDDH0162	108.00	109.00	1.00	2.49	including	ZDDH0170	23.00	25.00	2.00	1.13	including
ZDDH0162	144.50	157.00	12.50	2.71		ZDDH0170	27.00	29.10	2.10	1.33	including
ZDDH0162	144.50	148.00	3.50	6.45	including	ZDDH0170	47.00	51.00	4.00	1.14	including
ZDDH0162	188.42	215.95	27.53	0.66		ZDDH0170	80.00	88.00	8.00	1.33	including
ZDDH0162	194.00	198.00	4.00	1.29	including	ZDDH0170	116.00	117.00	1.00	2.88	including
ZDDH0162	203.00	204.00	1.00	1.29	including	ZDDH0170	147.00	206.00	59.00	2.49	including
ZDDH0162	208.00	209.00	1.00	1.56	including	ZDDH0170	147.00	182.00	35.00	3.99	including
ZDDH0162	212.50	215.95	3.45	1.45	including	ZDDH0170	147.00	168.00	21.00	5.26	including
ZDDH0163	73.20	74.95	1.75	1.98		ZDDH0170	147.00	159.00	12.00	8.55	including
ZDDH0163	98.35	120.00	21.65	0.90		ZDDH0170	191.00	192.00	1.00	2.84	including
ZDDH0163	100.52	116.74	16.22	1.12	including	ZDDH0170	197.00	198.00	1.00	1.27	including
ZDDH0163	100.52	111.26	10.74	1.23	including	ZDDH0170	205.00	206.00	1.00	2.11	including
ZDDH0163	138.26	139.00	0.74	1.01							
ZDDH0163	182.50	184.00	1.50	0.84							

Hole ID	Hole Location			Hole Orientation		Drill Depth (m)
	Northin g	Eastin g	Elevation	Dip	Azimuth	
ZDDH00166	7036313	342374	626	-60	240	420.00
ZDDH00167	7035972	341626	558	-60	240	253.00
ZDDH00168	7036038	341621	572	-60	240	262.00
ZDDH00169	7036085	341789	588	-60	240	310.00
ZDDH00170	7036300	341808	610	-60	240	247.80
ZDDH00171	7035941	341691	571	-60	240	292.40
ZDDH00172	7036089	341672	586	-60	240	270.00
ZDDH00173	7036392	341969	651	-60	240	343.20
ZDDH00174	7035984	341813	625	-60	240	475.10
ZDDH00175	7036551	342049	670	-60	240	404.00
ZDDH00176	7036246	341706	604	-60	240	174.10
ZDDH00177	7036587	342073	687	-60	240	360.90
ZDDH00178	7036175	342139	638	-60	240	567.00
ZDDH00179	7036394	342060	686	-60	240	391.70
ZDDH00180	7036361	341833	619	-60	240	281.00
ZDDH00181A	7036323	341882	611	-60	240	330.30
ZDDH00182	7036375	342105	666	-60	240	443.00
ZDDH00183	7036136	341674	596	-60	240	389.00
ZDDH00184	7036145	341649	590	-60	240	250.00
ZDDH00185	7036270	341664	574	-60	240	125.04
ZDDH00186	7036184	341676	587	-60	240	111.80
ZDDH00186A	7036184	341676	587	-60	240	237.00
ZDDH00187	7036231	341638	567	-60	240	125.00
ZDDH00188	7036642	341820	621	-60	240	204.20
ZDDH00189	7036395	341811	633	-60	240	225.00
ZDDH00190	7036516	341982	400	-60	240	400.00
ZDDH00191	7036227	342166	641	-60	240	490.00
ZDDH00192	7036302	341972	644	-60	240	396.00
ZDDH00193	7036426	341808	630	-60	240	360.00
ZDDH00194	7035973	341708	582	-60	240	377.00
ZDDH00195	7036379	341987	655	-60	240	348.20
ZDDH00196A	7036149	341614	576	-60	240	180.00
ZDDH00197	7036135	341879	623	-60	240	300.00
ZDDH00198	7036156	341957	647	-60	240	380.00

Hole ID	Hole Location			Hole Orientation		Drill Depth (m)
	Northin g	Eastin g	Elevatio n	Dip	Azimuth	
ZDDH00199	7036372	341788	644	-60	240	257.00
ZDDH00200	7036265	341698	595	-60	240	210.20
ZDDH00201	7036052	341810	605	-60	240	341.00
ZDDH00202	7036048	341927	660	-60	240	511.20
ZDDH00203	7036384	342078	680	-60	240	403.90
ZDDH00204	7036142	342073	675	-60	240	372.00
ZDDH00205	7036207	341676	584	-60	240	229.00
ZDDH00206	7036548	342086	687	-60	240	334.60
ZDDH00207	7036486	342058	701	-60	240	320.00
ZDDH00208	7036486	342058	701	-60	240	337.50
ZDDH00209	7036246	342246	611	-60	240	407.40
ZDDH00210	7036411	341837	624	-60	240	235.40
ZDDH00211	7036450	341843	635	-60	240	294.90
ZDDH00212	7036513	341660	580	-60	240	75.03
ZDDH00213	7036170	342068	622	-60	240	466.50
ZDDH00214	7036296	342003	657	-60	240	452.06
ZDDH00215	7036451	342034	685	-60	240	337.80
ZDDH00216	7035933	342213	570	-60	240	242.00
ZDDH00217	7036515	342421	655	-60	240	513.20
ZDDH00218	7036512	342456	659	-60	240	344.00
ZDDH00219	7036377	342351	624	-60	240	150.10
ZDDH00220	7036270	341999	658	-60	240	400.08
ZDDH00221	7036724	341835	678	-60	240	290.80
ZDDH00222	7036608	341662	611	-60	240	16.60
ZDDH00222A	7036612	341662	611	-60	240	284.20
ZDDH00223	7036334	342357	629	-60	240	551.00
ZDDH00224	7036534	341460	600	-60	240	311.00
ZDDH00225	7036333	342162	626	-60	240	545.00
ZDDH00226	7036207	342500	638	-60	240	450.00
ZDDH00227	7035941	341752	600	-60	240	418.10
ZDDH00228	7036418	342548	686	-60	240	451.60
ZDDH00229	7036408	342039	670	-60	240	420.00
ZDDH00230	7035751	341890	557	-60	240	370.00

Drillhole details for holes completed at El Zorro by Tesoro since February 2020. Co-ordinate system is PSAD56-19S.

APPENDIX 3 – JORC TABLES

JORC Table 1

Section 1: Sampling Techniques and Data

Criteria	JORC Code explanation	Commentary
Sampling techniques	<ul style="list-style-type: none"> Nature and quality of sampling (e.g. cut channels, random chips, or specific specialised industry standard measurement tools appropriate to the minerals under investigation, such as downhole gamma sondes, or handheld XRF instruments, etc.). These examples should not be taken as limiting the broad meaning of sampling. 	<p>Tesoro has completed 230 diamond drill holes for 72,935m in 2017, 2018, 2020 and 2021 (ZDDH0001 to ZDDH00230). Diamond drill holes were drilled with HQ. Sampling was half core at geologically defined and significant mineralisation boundaries.</p> <p>Tesoro considers the sampling methodologies to be appropriate for this style of mineralisation.</p>
	<ul style="list-style-type: none"> Include reference to measures taken to ensure sample representivity and the appropriate calibration of any measurement tools or systems used. 	<p>Tesoro Diamond drill holes were drilled with HQ. Sampling was half core at geological and significant mineralisation boundaries. Tesoro consider this appropriate for the style of mineralisation.</p>
	<ul style="list-style-type: none"> Aspects of the determination of mineralisation that are Material to the Public Report. In cases where 'industry standard' work has been done, this would be relatively simple (e.g. 'reverse circulation drilling was used to obtain 1 m samples from which 3 kg was pulverised to produce a 30 g charge for fire assay'). In other cases, more explanation may be required, such as where there is coarse gold that has inherent sampling problems. Unusual commodities or mineralisation types (e.g. submarine nodules) may warrant disclosure of detailed information. 	<p>Diamond drilling was used to obtain ½ core samples of various lengths (minimum 0.25m), from which 1kg of material was pulverised passing 200 mesh to produce a 50g charge for fire assay fusion with a gravimetric finish. Multielement assays were completed by 4-acid digest with a 2.5g charge. Tesoro consider these appropriate assay techniques.</p>
Drilling techniques	<ul style="list-style-type: none"> Drill type (e.g. core, reverse circulation, open-hole hammer, rotary air blast, auger, Bangka, sonic, etc.) and details (e.g. core diameter, triple or standard tube, depth of diamond tails, face-sampling bit or other type, whether core is oriented and if so, by what method, etc.). 	<p>Tesoro has completed 230 diamond drill holes for 72,935m . Diamond drill holes were drilled with HQ. Sampling was half core at geological and significant mineralisation boundaries. Standard tube was used.</p>
Drill sample recovery	<ul style="list-style-type: none"> Method of recording and assessing core and chip sample recoveries and results assessed. 	<p>Core recovery was estimated using the drillers recorded depth marks against the length of the core recovered. Reviewing the core photos, there are occasional shears/faults where core is broken. There is however no significant core loss.</p>
	<ul style="list-style-type: none"> Measures taken to maximise sample recovery and ensure representative nature of the samples. 	<p>A single tube system was employed and in general core recovery good.</p>
	<ul style="list-style-type: none"> Whether a relationship exists between sample recovery and grade and whether sample bias may have occurred due to preferential loss/gain of fine/coarse material. 	<p>There appears to be no potential sample bias as there was no regular loss of core.</p>
Logging	<ul style="list-style-type: none"> Whether core and chip samples have been geologically and geotechnically logged to a level of detail to support appropriate Mineral Resource estimation, mining studies and metallurgical studies. 	<p>Geological core logging to a resolution of 25 cm was undertaken with a record kept of, inter alia, colour, lithology, weathering, grain size, mineralisation, alteration, geotechnical characteristics etc. Diamond core is stored at the Company's warehouse.</p> <p>Tesoro consider the data to be of an appropriate level of detail to support a future resource estimation.</p>
	<ul style="list-style-type: none"> Whether logging is qualitative or quantitative in nature. Core (or costean, channel, etc.) photography. 	<p>Logging of diamond core was qualitative and diamond core was photographed.</p>
	<ul style="list-style-type: none"> The total length and percentage of the relevant intersections logged. 	<p>All drilled intervals are logged and recorded.</p>
Subsampling techniques and sample preparation	<ul style="list-style-type: none"> If core, whether cut or sawn and whether quarter, half or all core taken. 	<p>Drill core was cut, and half core was collected for analysis</p>
	<ul style="list-style-type: none"> If non-core, whether riffled, tube sampled, rotary split, etc. and whether sampled wet or dry. 	<p>Tesoro has not completed any percussion drilling.</p>
	<ul style="list-style-type: none"> For all sample types, the nature, quality and appropriateness of the sample preparation technique. 	<p>Collection of half core ensured the nature, quality and appropriateness of the collected sample.</p> <p>The sample preparation of crushing half core at the lab to mm size prior to splitting off a 50g charge (either by cone/quarter</p>

Criteria	JORC Code explanation	Commentary
		or riffle) for pulverisation provides an appropriate and representative sample for analysis.
	<ul style="list-style-type: none"> Quality control procedures adopted for all subsampling stages to maximise representivity of samples. 	Half core was collected for the entirety of the Tesoro drilling, as such there was consistency throughout the drilling. Core was logged by a qualified geoscientist. Each subsample is considered to be representative of the interval.
	<ul style="list-style-type: none"> Measures taken to ensure that the sampling is representative of the in-situ material collected, including for instance results for field duplicate/second-half sampling. 	Sampling of half core is representative of the in-situ material. There are field duplicate samples collected from the diamond core with irregular results. Field drill core duplicates are irregular by nature and it has been recommended by Tesoro's consultants to use coarse reject material to monitor the sample preparation.
	<ul style="list-style-type: none"> Whether sample sizes are appropriate to the grain size of the material being sampled. 	sample sizes collected were considered appropriate to reasonably represent the material being tested.
Quality of assay data and laboratory tests	<ul style="list-style-type: none"> The nature, quality and appropriateness of the assaying and laboratory procedures used and whether the technique is considered partial or total. 	Assays reported in this report were undertaken at the accredited laboratory of ALS Santiago, which is fully certified. Core samples of various lengths were assayed (minimum 0.25m) from which 1kg of material was pulverized passing 200 mesh to produce a 50 g charge for fire assay fusion with gravimetric finish. Multielement assays were completed by 4-acid digest with a 2.5 g charge. All techniques are appropriate for the element being determined.
	<ul style="list-style-type: none"> For geophysical tools, spectrometers, handheld XRF instruments, etc., the parameters used in determining the analysis including instrument make and model, reading times, calibrations factors applied and their derivation, etc. 	Standard chemical analyses were used for grade determination. There was no reliance on determination of analysis by geophysical tools.
	<ul style="list-style-type: none"> Nature of quality control procedures adopted (e.g. standards, blanks, duplicates, external laboratory checks) and whether acceptable levels of accuracy (i.e. lack of bias) and precision have been established. 	QAQC procedures included the insertion of Certified Reference Materials (CRMs) (5%) and blank material (2%), Check samples (5%) and check assaying 5% Cube Consulting Pty Ltd manage the database for Tesoro. The laboratories used have generally demonstrated analytical accuracy at an acceptable level within 95% confidence limits.
Verification of sampling and assaying	<ul style="list-style-type: none"> The verification of significant intersections by either independent or alternative company personnel. 	A number of independent consulting geoscientists (Cube Consulting, Oliver, and Cooley) external to Tesoro have verified the intersections for holes ZDDH0001 to ZDDH0080. Holes ZDDH0081 onwards have been verified by multiple appropriately qualified Company personnel.
	<ul style="list-style-type: none"> The use of twinned holes. 	no twinned holes have been completed
	<ul style="list-style-type: none"> Documentation of primary data, data entry procedures, data verification, data storage (physical and electronic) protocols. 	Tesoro drilling is digitally entered and stored following documented core handling protocols. The protocols are considered adequate.
	<ul style="list-style-type: none"> Discuss any adjustment to assay data. 	No adjustments were made to Tesoro Drilling
Location of data points	<ul style="list-style-type: none"> Accuracy and quality of surveys used to locate drillholes (collar and downhole surveys), trenches, mine workings and other locations used in Mineral Resource estimation. 	Tesoro drill hole collars have been surveyed accurately using differential GPS for holes ZDDH0001 to ZDDH00080. Holes ZDDH0081 onwards have been surveyed using handheld GPS and will be surveyed using differential GPS once the drill program has concluded.
	<ul style="list-style-type: none"> Specification of the grid system used. 	The grid system used PSAD56 19S
	<ul style="list-style-type: none"> Quality and adequacy of topographic control. 	The topography generated from an accurate topographic survey data completed by a registered surveyor and has been used for the current control.
Data spacing and distribution	<ul style="list-style-type: none"> Data spacing for reporting of Exploration Results. 	Drill hole spacing is variable between 25m and 200m
	<ul style="list-style-type: none"> Whether the data spacing and distribution is sufficient to establish the degree of geological and grade continuity appropriate for the Mineral Resource and Ore Reserve estimation procedure(s) and classifications applied. 	The spacing of drill holes is variable and satisfactory for reconnaissance level drilling. The holes are not intended to be used for resource estimates at this stage of exploration.
	<ul style="list-style-type: none"> Whether sample compositing has been applied. 	Sample composites was not employed.
Orientation of data in relation to geological structure	<ul style="list-style-type: none"> Whether the orientation of sampling achieves unbiased sampling of possible structures and the extent to which this is known, considering the deposit type. 	Drill holes were drilled across the interpreted strike of the mineralization
	<ul style="list-style-type: none"> If the relationship between the drilling orientation and the orientation of key 	Tesoro diamond drilling at various orientations does not reveal any bias regarding the orientation of the mineralised horizons.

Criteria	JORC Code explanation	Commentary
	<i>mineralised structures is considered to have introduced a sampling bias, this should be assessed and reported if material.</i>	
Sample security	<ul style="list-style-type: none"> The measures taken to ensure sample security. 	Chain of Custody of digital data is managed by the Company. Physical material was stored on site and, when necessary, delivered to the assay laboratory. Thereafter laboratory samples were controlled by the nominated laboratory which to date has been Bureau Veritas and ALS Santiago. All sample collection was controlled by digital sample control file(s) and hardcopy ticket books.
Audits or reviews	<ul style="list-style-type: none"> The results of any audits or reviews of sampling techniques and data. 	No audits have been undertaken.

(Criteria in this section apply to all succeeding sections)

Section 2: Reporting of Exploration Results

(Criteria listed in the preceding section also apply to this section)

Criteria	JORC Code explanation	Commentary
Mineral tenement and land tenure status	<ul style="list-style-type: none"> Type, reference name/number, location and ownership including agreements or material issues with third parties such as joint ventures, partnerships, overriding royalties, native title interests, historical sites, wilderness or national park and environmental settings. 	Information regarding tenure is included in the company's December 2020 half yearly report released to the ASX on 12 March 2021 Tesoro Resources Ltd, 95% owned Chilean subsidiary, Tesoro Mining Chile SpA, owns 85% of the El Zorro Gold Project Concessions.
	<ul style="list-style-type: none"> The security of the tenure held at the time of reporting along with any known impediments to obtaining a licence to operate in the area. 	The Concession is believed to be in good standing with the governing authority and there is no known impediment to operating in the area.
Exploration done by other parties	<ul style="list-style-type: none"> Acknowledgment and appraisal of exploration by other parties. 	Little historical exploration has been undertaken in either project area. Coeur d'Alene's Chilean exploration division undertook activities on the Ternera prospect, under an option agreement with the previous owners between April 1990 and January 1993.
Geology	<ul style="list-style-type: none"> Deposit type, geological setting and style of mineralisation. 	The mineralisation model is to likely to be intrusive related gold deposit. The key characteristics that are consistent with this style deposit include: <ul style="list-style-type: none"> Low sulphide content, (typically <5%); reduced ore mineral assemblage that typically comprises pyrite and lacks primary magnetite or hematite Mineralisation occurs as sheeted vein deposits or stockwork assemblages and often combine gold with variably elevated Bi, W, As, Mo, Te, and/or Sb but low concentrations of base metals as seen in the initial four holes by Tesoro at El Zorro Restricted and commonly weak proximal hydrothermal alteration Intrusions of intermediate to felsic composition.
Drillhole information	<ul style="list-style-type: none"> A summary of all information material to the understanding of the exploration results including a tabulation of the following information for all Material drillholes: <ul style="list-style-type: none"> easting and northing of the drillhole collar elevation or RL (Reduced Level – elevation above sea level in metres) of the drillhole collar dip and azimuth of the hole downhole length and interception depth hole length. If the exclusion of this information is justified on the basis that the information is not Material and this exclusion does not detract from the understanding of the report, the Competent Person should clearly explain why this is the case. 	Information relating to current drill program presented in this report.
Data aggregation methods	<ul style="list-style-type: none"> In reporting Exploration Results, weighting averaging techniques, maximum and/or minimum grade truncations (e.g. cutting of high grades) and cut-off grades are usually Material and should be stated. 	No cutting of grades has been undertaken at this early stage of exploration drilling. Downhole intercepts are calculated using a length weighted averaging method.

Criteria	JORC Code explanation	Commentary
	<ul style="list-style-type: none"> Where aggregate intercepts incorporate short lengths of high grade results and longer lengths of low grade results, the procedure used for such aggregation should be stated and some typical examples of such aggregations should be shown in detail. 	<p>All individual results for holes ZDDH00001 to ZDDH00016 are reported in prospectus dated 30th October 2019 lodged by Plukka Ltd.</p> <p>Down hole length weighted average results are calculated using a 0.20g/t Au cut off and a maximum of 5m internal dilution</p>
	<ul style="list-style-type: none"> The assumptions used for any reporting of metal equivalent values should be clearly stated. 	No metal equivalents are reported.
Relationship between mineralisation widths and intercept lengths	<ul style="list-style-type: none"> These relationships are particularly important in the reporting of Exploration Results. 	
	<ul style="list-style-type: none"> If the geometry of the mineralisation with respect to the drillhole angle is known, its nature should be reported. 	The mineralisation forms sub-vertical sheeted veins and individual veins and may form plunging zones within the mineralised structures. Drilling by Tesoro has been undertaken to test these orientations.
	<ul style="list-style-type: none"> If it is not known and only the downhole lengths are reported, there should be a clear statement to this effect (e.g. 'downhole length, true width not known'). 	Exploration results are reported as downhole widths as the true width is not known with any certainty.
Diagrams	<ul style="list-style-type: none"> Appropriate maps and sections (with scales) and tabulations of intercepts should be included for any significant discovery being reported. These should include, but not be limited to a plan view of drillhole collar locations and appropriate sectional views. 	Relevant maps and diagrams are included in the body of the report.
Balanced reporting	<ul style="list-style-type: none"> Where comprehensive reporting of all Exploration Results is not practicable, representative reporting of both low and high grades and/or widths should be practiced to avoid misleading reporting of Exploration Results. 	All assay results from drilling are reported. Reporting of visible gold occurrences in drill core is by visual inspection only and final gold content is not known until assay results have been received.
Other substantive exploration data	<ul style="list-style-type: none"> Other exploration data, if meaningful and material, should be reported including (but not limited to): geological observations; geophysical survey results; geochemical survey results; bulk samples – size and method of treatment; metallurgical test results; bulk density, groundwater, geotechnical and rock characteristics; potential deleterious or contaminating substances. 	All material exploration data is reported in the body of the report.
Further work	<ul style="list-style-type: none"> The nature and scale of planned further work (e.g. tests for lateral extensions or depth extensions or large-scale step-out drilling). 	Further work will be focused on drill testing the Ternera mineralisation and additional prospects as defined in the work program. Core will be used for metallurgical testwork and resource modelling is planned.
	<ul style="list-style-type: none"> Diagrams clearly highlighting the areas of possible extensions, including the main geological interpretations and future drilling areas, provided this information is not commercially sensitive. 	Diagrams have been included in the body of this report.