

An Emerging  
Precious and Base  
Metals Company

**AUSTRALIAN NICKEL  
CONFERENCE**

5 October 2021

**GREG MILES, CEO**

ASX CODE: **CPN**



# DISCLAIMER



The information contained in this presentation is for informational purposes only and does not constitute an offer to issue, or arrange to issue, securities or other financial products. The information contained in this presentation is not investment or financial product advice and is not intended to be used as the basis for making an investment decision. The presentation has been prepared without taking into account the investment objectives, financial situation or particular needs of any particular person. Before making an investment decision, you should consider, with or without the assistance of a financial adviser, whether an investment is appropriate in light of your particular Investment Needs, Objectives And Financial Circumstances.

No representation or warranty, express or implied, is made as to the fairness, accuracy, completeness or correctness of the information, opinions and conclusions contained in this presentation. To the maximum extent permitted by law, none of Caspin Resources Ltd, their directors, employees or agents, nor any other person accepts any liability, including, without limitation, any liability arising out of fault of negligence, for any loss arising from the use of the information contained in this presentation. In particular, no representation or warranty, express or implied is given as to the accuracy, completeness or correctness, likelihood of achievement or reasonableness or any forecasts, prospects or returns contained in this presentation nor is any obligation assumed to update such information. Such forecasts, prospects or returns are by their nature subject to significant uncertainties and contingencies.

## **Competent Persons Statement**

The information in this report that relates to Exploration Results is based on information compiled or reviewed by Mr Greg Miles, a Competent Person who is an employee of the company. Mr Miles is a Member of the Australian Institute of Geoscientists and has sufficient experience of relevance to the styles of mineralisation and the types of deposits under consideration, and to the activities undertaken, to qualify as a Competent Person as defined in the 2012 Edition of the Joint Ore Reserves Committee (JORC) Australasian Code for Reporting of Exploration Results, Mineral Resources and Ore Reserves. Mr Miles consents to the inclusion in this report of the matters based on information in the form and context in which it appears.

The Company confirms that it is not aware of any new information or data that materially affects the Exploration Results information included in this report from previous Company announcements (including drill results extracted from the Company's Prospectus) announced to the ASX on 23 November 2020 and on 30 March 2021, 28 April 2021, 24 May 2021, 16 June 2021, 5 July 2021, 19 August 2021 and 21 September 2021.

## **Forward Looking Statements**

Some statements in this report regarding estimates or future events are forward-looking statements. Forward-looking statements include, but are not limited to, statements preceded by words such as “planned”, “expected”, “projected”, “estimated”, “may”, “scheduled”, “intends”, “anticipates”, “believes”, “potential”, “could”, “nominal”, “conceptual” and similar expressions. Forward-looking statements, opinions and estimates included in this announcement are based on assumptions and contingencies which are subject to change without notice, as are statements about market and industry trends, which are based on interpretations of current market conditions. Forward-looking statements are provided as a general guide only and should not be relied on as a guarantee of future performance. Forward-looking statements may be affected by a range of variables that could cause actual results to differ from estimated results—expressed or implied by such forward-looking statements. These risks and uncertainties include but are not limited to liabilities inherent in exploration and development activities, geological, mining, processing and technical problems, the inability to obtain exploration and mine licenses, permits and other regulatory approvals required in connection with operations, competition for among other things, capital, undeveloped lands and skilled personnel; incorrect assessments of prospectivity and the value of acquisitions; the inability to identify further mineralisation at the Company’s tenements, changes in commodity prices and exchange rates; currency and interest rate fluctuations; various events which could disrupt exploration and development activities, operations and/or the transportation of mineral products, including labour stoppages and severe weather conditions; the demand for and availability of transportation services; the ability to secure adequate financing and management's ability to anticipate and manage the foregoing factors and risks and various other risks set out in the Prospectus. There can be no assurance that forward-looking statements will prove to be correct.

Statements regarding plans with respect to the Company’s mineral properties may contain forward looking statements. Statements in relation to future matters can only be made where the Company has a reasonable basis for making those statements.

Authorised for release to the ASX by Greg Miles, Chief Executive Officer.

# Corporate Overview



Backed by strategic shareholders and well funded for exploration

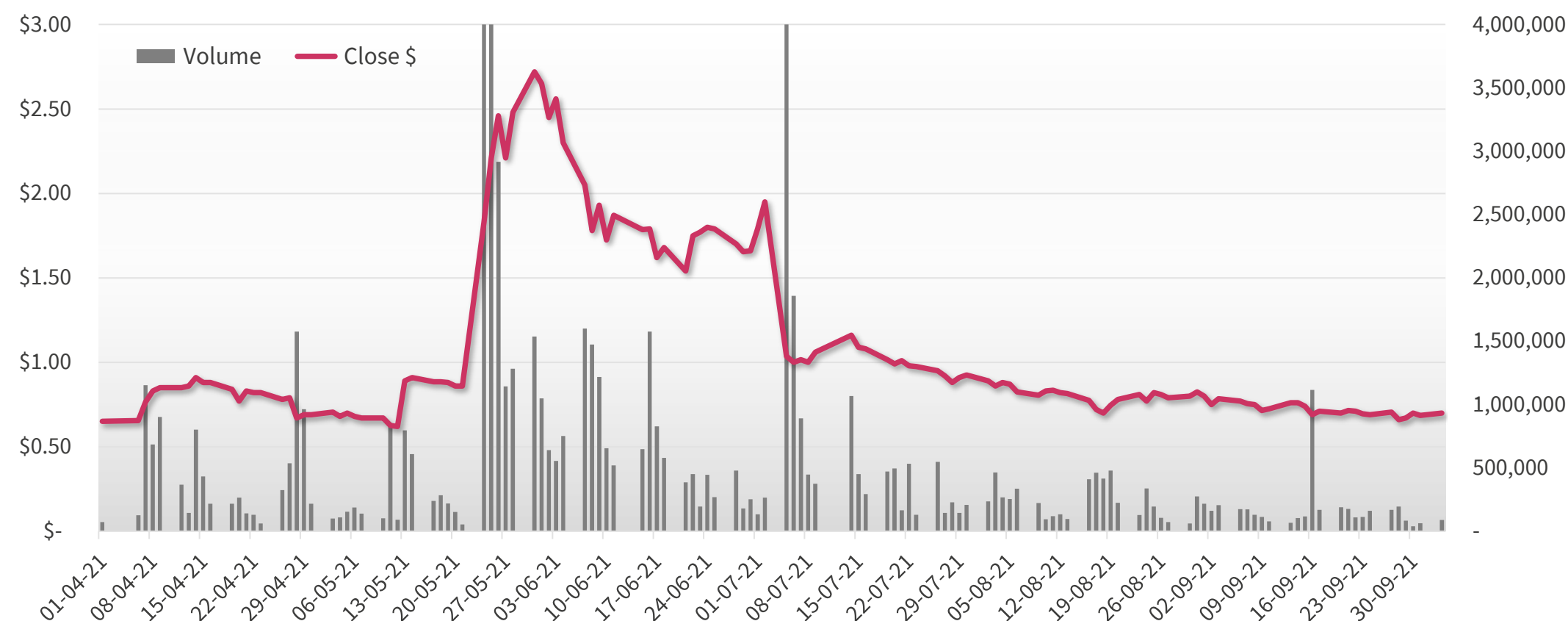
Capital Structure (4 October 2021)	Details
ASX Code	CPN
<b>Total Ordinary Shares on Issue <sup>1</sup></b>	<b>74,740,710</b>
Unlisted Options & Performance Rights <sup>2</sup>	5,492,750
Share Price (close 4 October 2021)	\$0.70
<b>Market Capitalisation</b>	<b>~\$52M</b>
Cash Balance <sup>3</sup> (30 June 2021)	\$15.05M
Debt (30 June 2021)	nil

1. Includes 4.92M Shares held by Board and Management - subject to ASX escrow until 25/11/2022.
2. 2.5M Board & Management 5 year Options at \$0.30 strike price.  
2M Lead Manager 5 year Options at \$0.30 strike price.  
992,750 Management and Employee Performance Rights (various vesting conditions).  
All subject to escrow until 25/11/2022
3. Balance 30 June quarterly cash and gross Placement proceeds settled 22/07/2021.

No.	Substantial Shareholders	No. (m)	%
1	Chalice Gold Mines Ltd	6.9	9.2%
2	Tinci (HK) Limited	5.6	7.5%
3	Mr Buxiao Yu	4.5	6.1%
4	Atasa Holdings Pty Ltd; & Tjandra Pramoko + Simone Suen	4.2	5.7%
5	Mr Sufan Siau	3.4	4.5%
6	Colin Iles	3.0	4.1%
<b>Total Substantial Shareholders</b>		<b>27.6</b>	<b>37.1%</b>
<b>Balance of Top 20</b>		<b>16.8</b>	<b>22.4%</b>
<b>Balance of Board &amp; Management <sup>1</sup></b>		<b>5.3</b>	<b>7.1%</b>

1. Excludes 4.2M shares (5.7%) held by Atasa Holdings Pty Ltd & Tjandra Pramoko + Simone Suen. Includes Escrow shares in %'s.

CPN - ASX 6 Month Share Price Performance



## Board and Management

**Mr Cliff Lawrenson** – Non-Executive Chair

**Mr Greg Miles** – Chief Executive Officer

**Dr Jon Hronsky** – Non-Executive Director

**Ms Simone Suen** – Non-Executive Director

**Mr Justin Tremain** – Non-Executive Director

**Mr Steven Wood** – CFO & Company Secretary



**Highly experienced exploration, corporate and capital markets team**

ABOVE: Steven Wood, Cliff Lawrenson, Jon Hronsky, Justin Tremain, Simone Suen & Greg Miles

# Overview of Assets



Two highly prospective and complementary projects in Tier 1 jurisdiction

## 1) Yarawindah Brook (80% interest) – PGE-Ni-Cu-Co

- ▶ 40km north from Chalice's high-grade Julimar PGE-Ni-Cu-Co discovery
- ▶ First-mover advantage with priority geological landholding (>400km<sup>2</sup>)
- ▶ Ni-Cu-PGE mineralisation intersected in drilling

## 2) Mount Squires (100% interest) – Au, Ni-Cu

- ▶ Large scale 750km<sup>2</sup>, greenfield gold project - one of the last unexplored WA gold provinces
- ▶ **Shallow significant intercepts** prove potential:
  - 20m @ 1.27g/t Au from 23m (including **7m @ 2.54g/t Au**)
  - 15m @ 2.30g/t Au from 31m (including **9m @ 3.25g/t Au**)
- ▶ Ni-Cu potential: adjacent to OZ Minerals' West Musgrave Project (**40m @ 1.2% Cu and 22m @ 1.8% Cu**)

## 3) Up to A\$20 million contingent cash payment from OZ Minerals

- ▶ In the event of a sale of all or a portion of OZ Mineral's interest in the West Musgrave Project or of the contained nickel at that project<sup>1</sup>

1. Subject to meeting certain thresholds. Caspin does not hold any direct or indirect ownership interest in the West Musgrave Project



# YARAWINDAH BROOK

(CPN 80%)

A large strategic land  
position in an emerging  
PGE-Ni-Cu belt

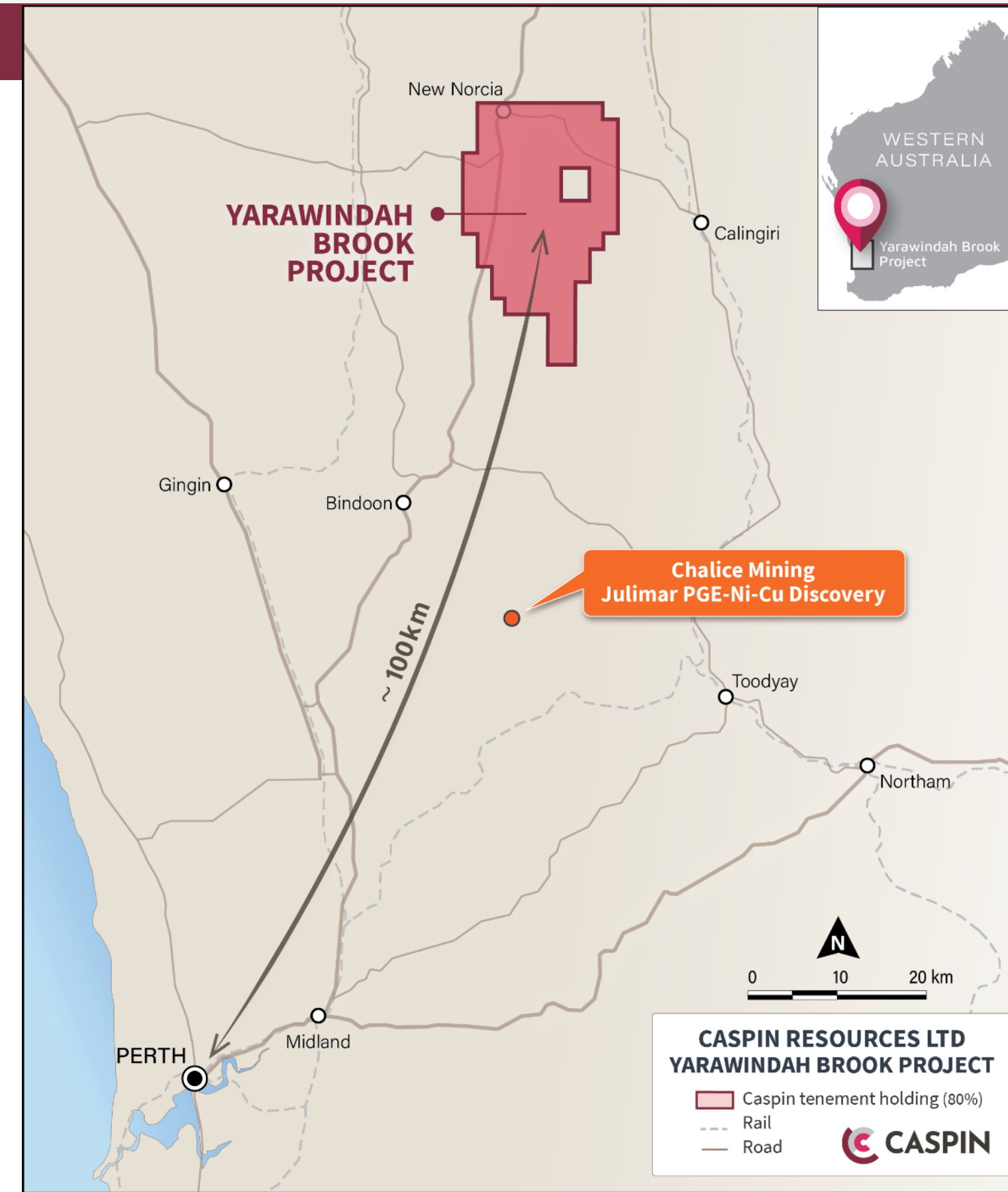


# Prime Position in an Emerging Ni-Cu-PGE Belt



## A Strong Foundation For Success

- Located 40km north of, and within same group of host rocks as Chalice's Julimar PGE-Ni-Cu-Co-Au Project
- Targeted in 2018 (pre-Julimar discovery) due to proximity to important regional structural intersection
- Overlooked in the past due to lack of geological exposure, competition with agriculture and focus on Kambalda-style Ni
- Exploration paradigm shift to orthomagmatic Ni-Cu-PGE deposits
- Historical exploration identifies significant Pd & Pt mineralisation
  - ▶ e.g. 11m @ 1.78g/t Pd & 0.56g/t Pt (YBR089)
- Julimar discovery in similar host rocks supports targeting concepts



# An Active Explorer Focused on Discovery



## Accelerated Exploration Since IPO in Nov 2020

**Nov 2020:** Airborne EM survey



**Jan 2021:** Ground EM survey at XC-29 Prospect



**Nov-Mar 2021:** >2,500 soil Geo-chemistry samples



**Apr 2021:** Focus on PGE mineralisation at Yarabrook Hill Prospect



**Apr-May 2021:** Diamond drilling at Yarabrook Hill & XC-29



**Jun 2021:** Airborne Gravity Gradiometer Survey



**Jul-Aug 2021:** RC Drilling program at Yarabrook Hill



# Potential New PGE Discovery at Yarabrook Hill

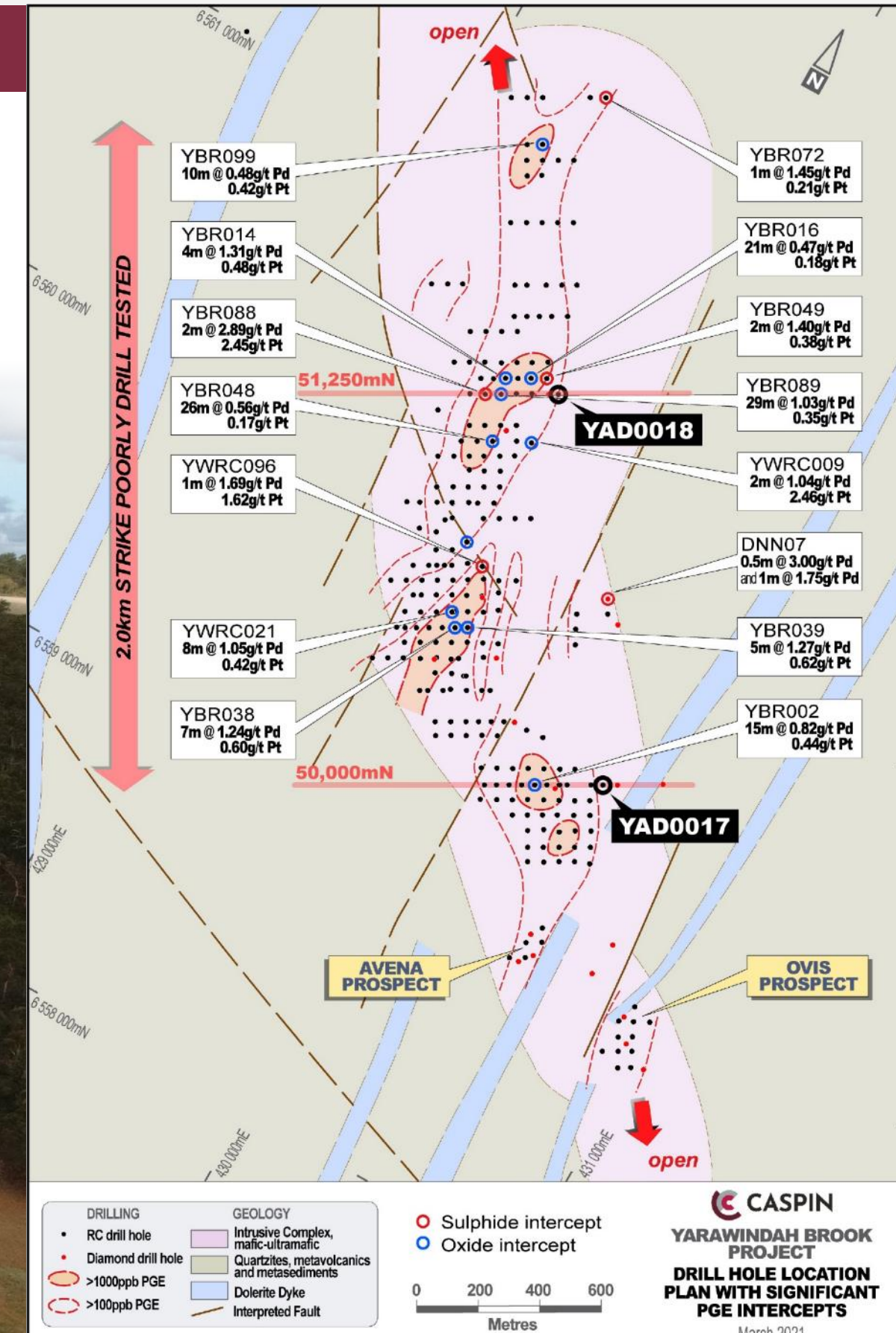


## Most Advanced Exploration Prospect in the Region

- Shallow historic drilling with surface mineralisation >2km
- Caspin's first two holes demonstrate mineralisation extends to bedrock
- Demonstrates potential for significant scale – open all directions



Drilling at Yarabrook Hill, May 2021

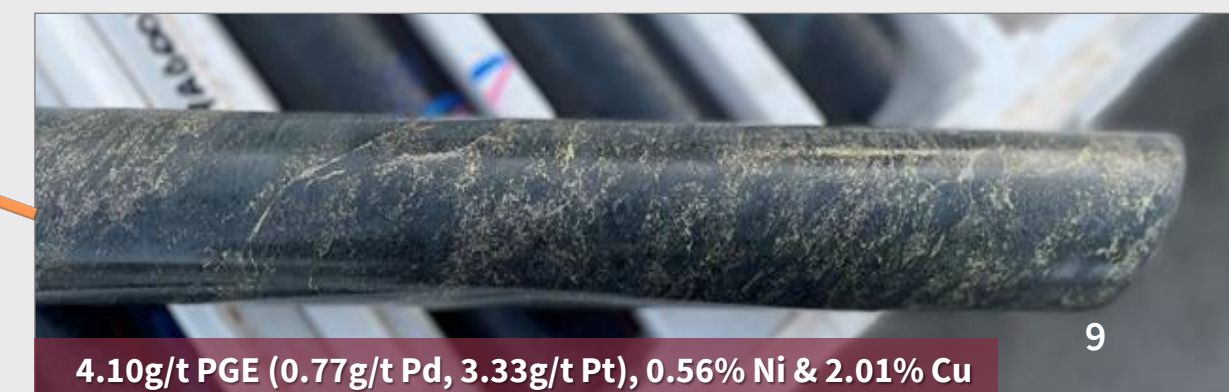
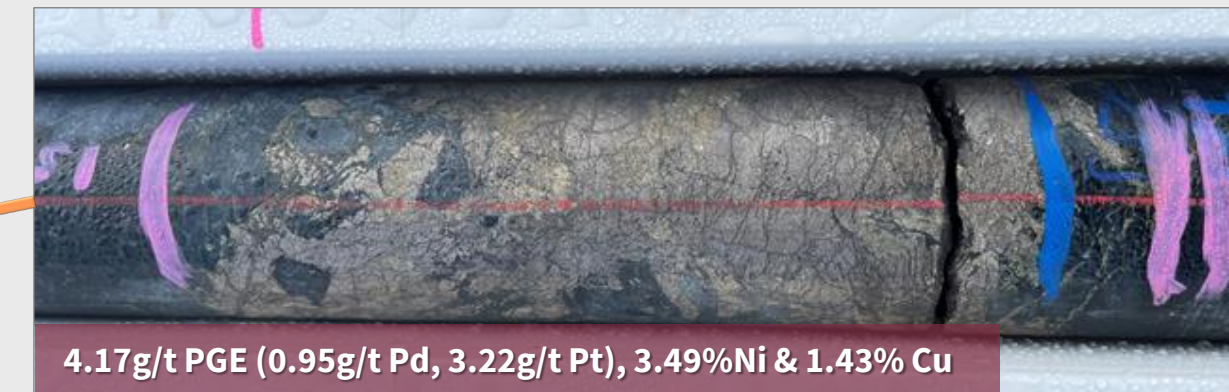
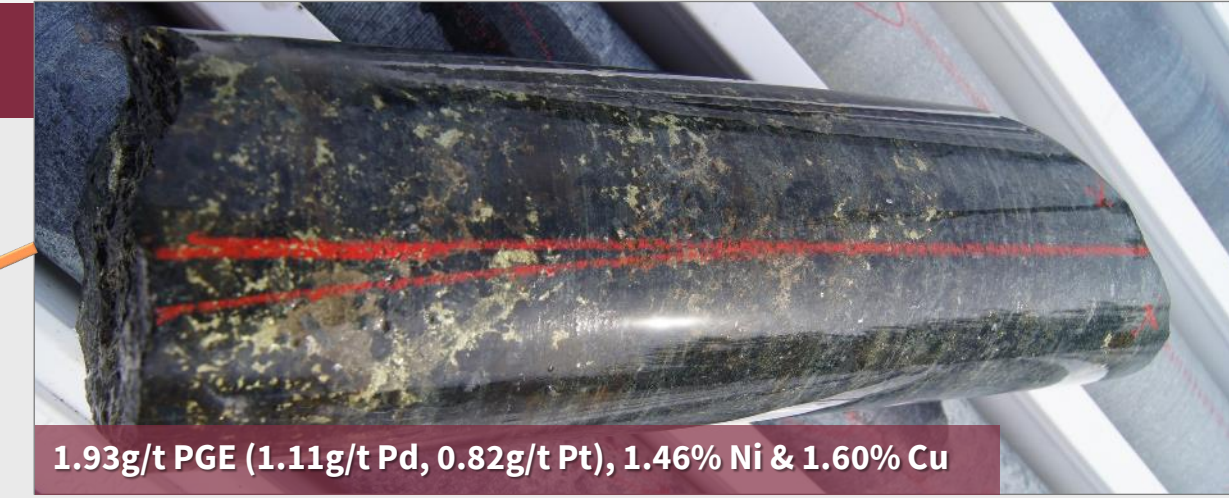
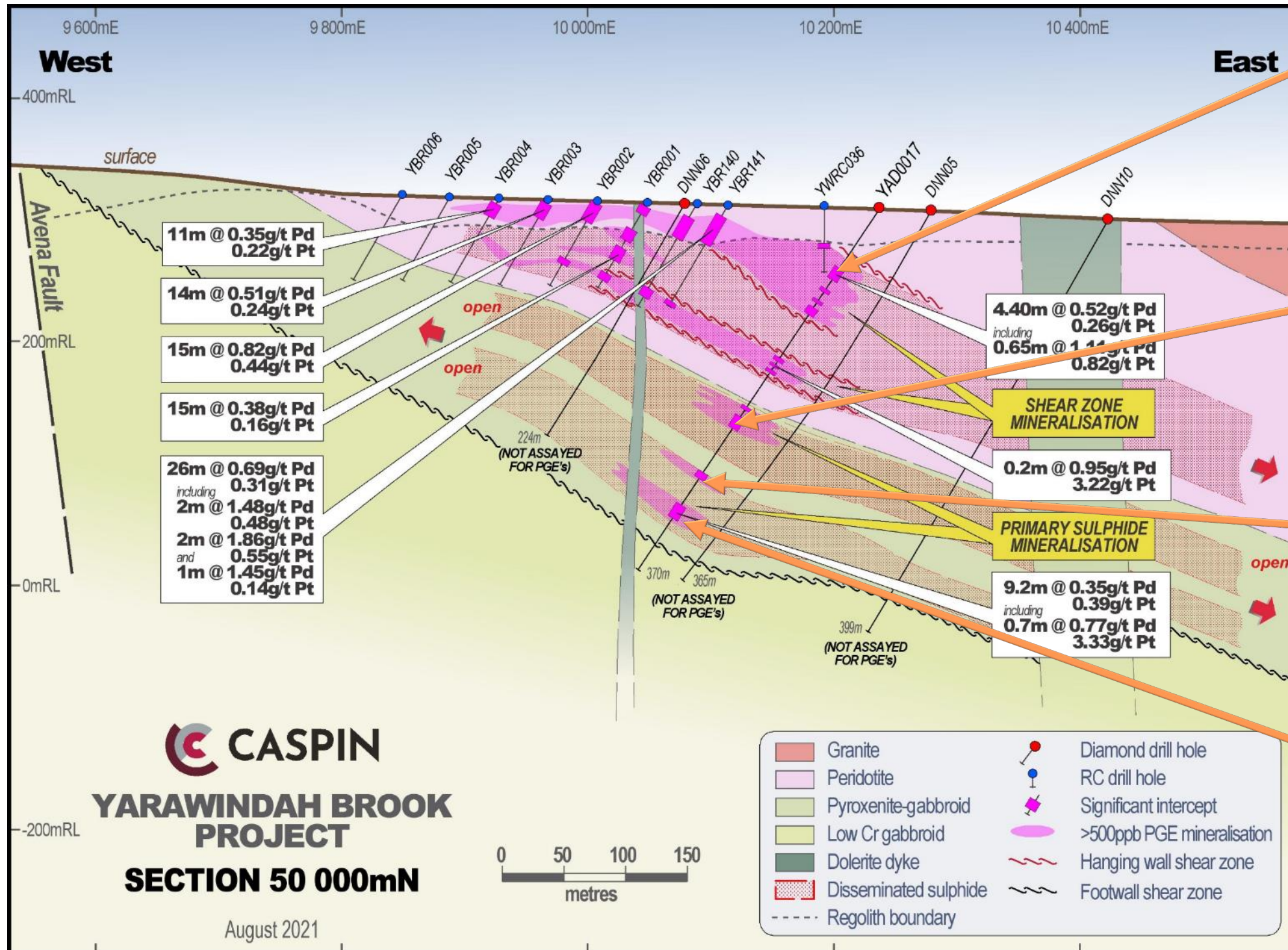




# Right rocks – First Milestone

## Significant PGE-Ni-Cu Mineralisation in Multiple Lodes

- Over 300m of anomalous PGE-Ni-Cu, open in all directions

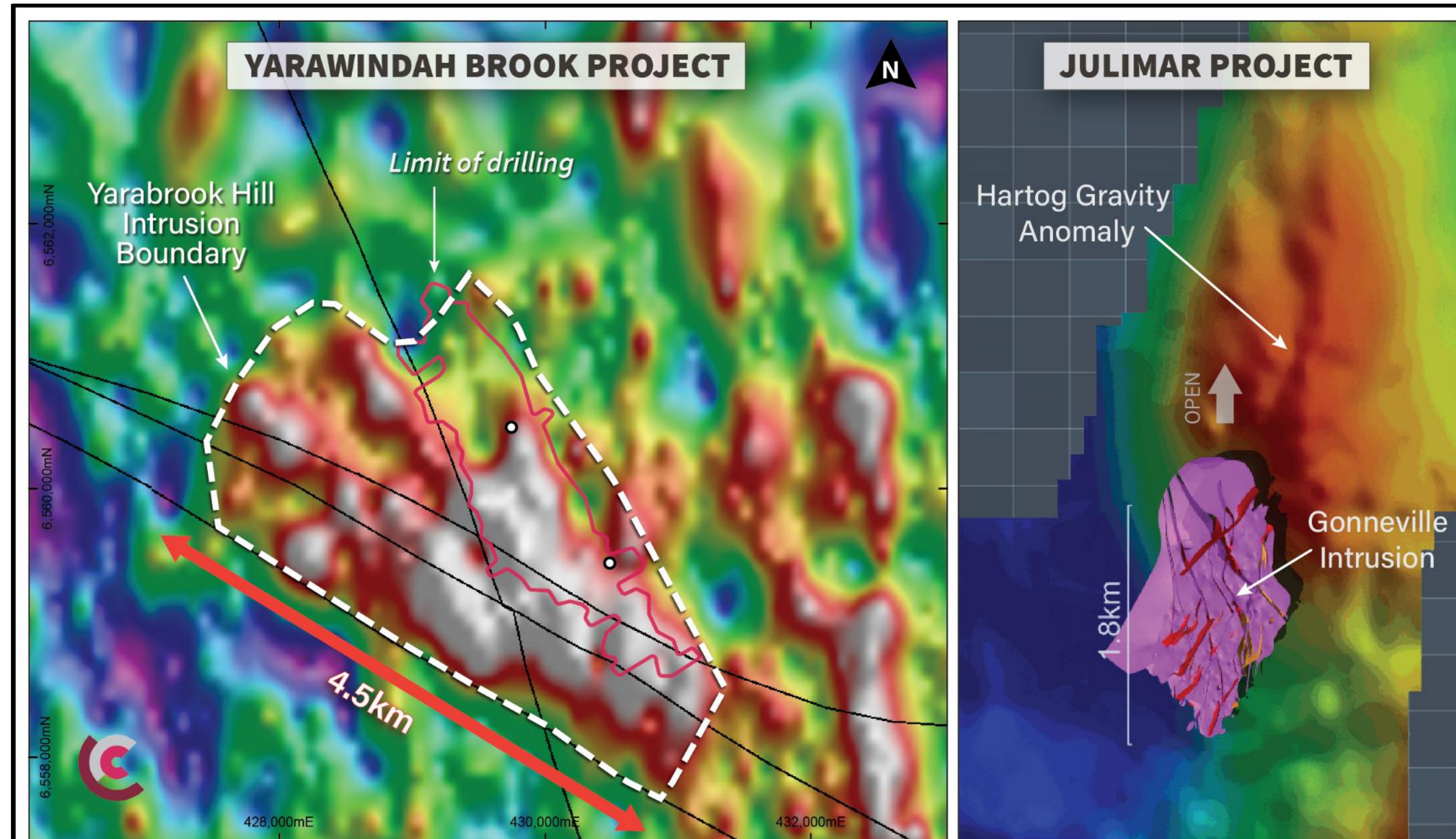


# New Datasets Provide Major Advance in Understanding

## Yarabrook Hill has Significant Scale

- Gravity results show host intrusion is much larger than previously mapped or drilled
- New geochemical anomalies within the gravity anomaly footprint provides confidence that they represent bedrock mineralisation
- Now recognising internal architecture of the intrusion and potential mineralised positions
- Plus, new context for EM anomalies

***Multiple targets for exploration***



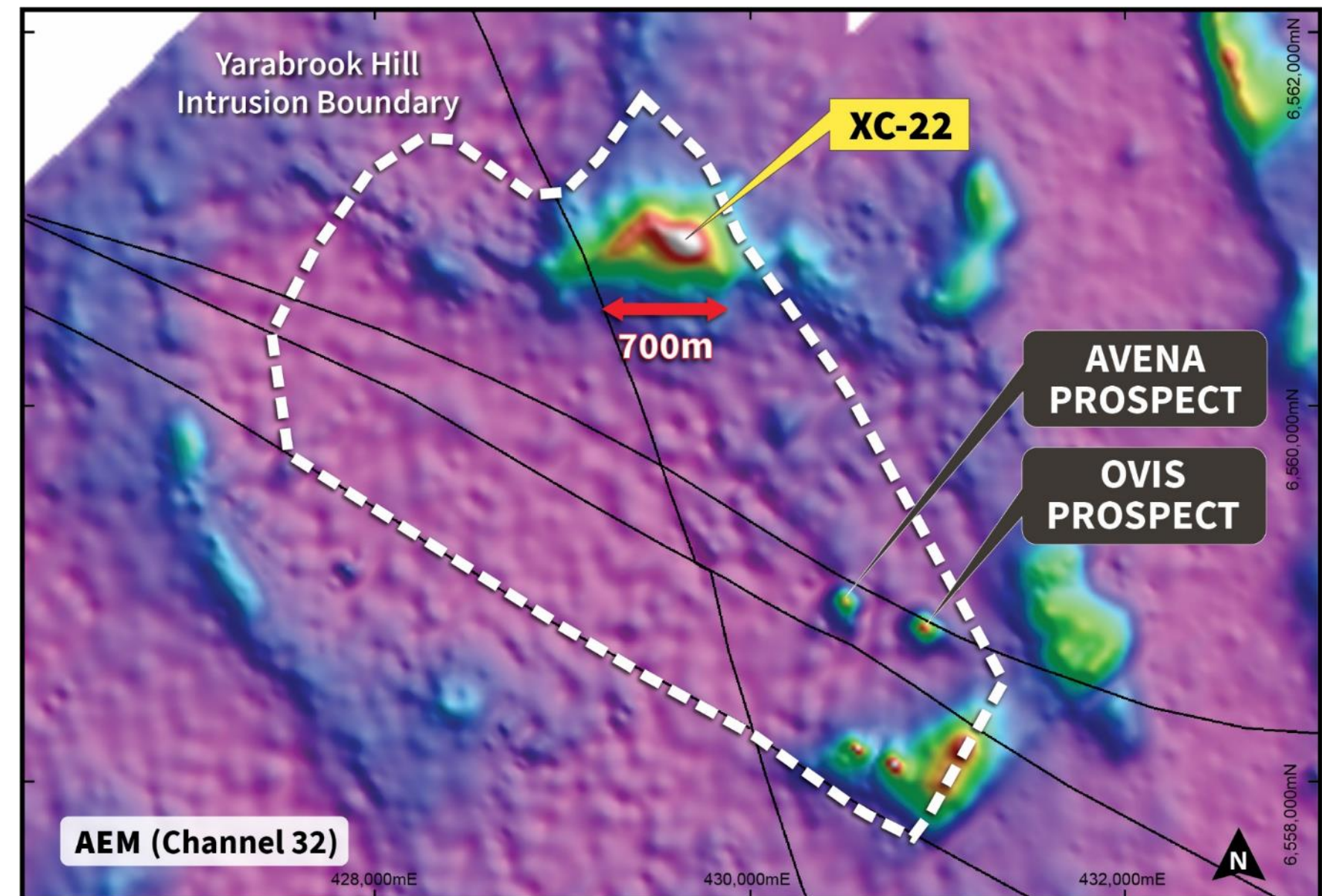
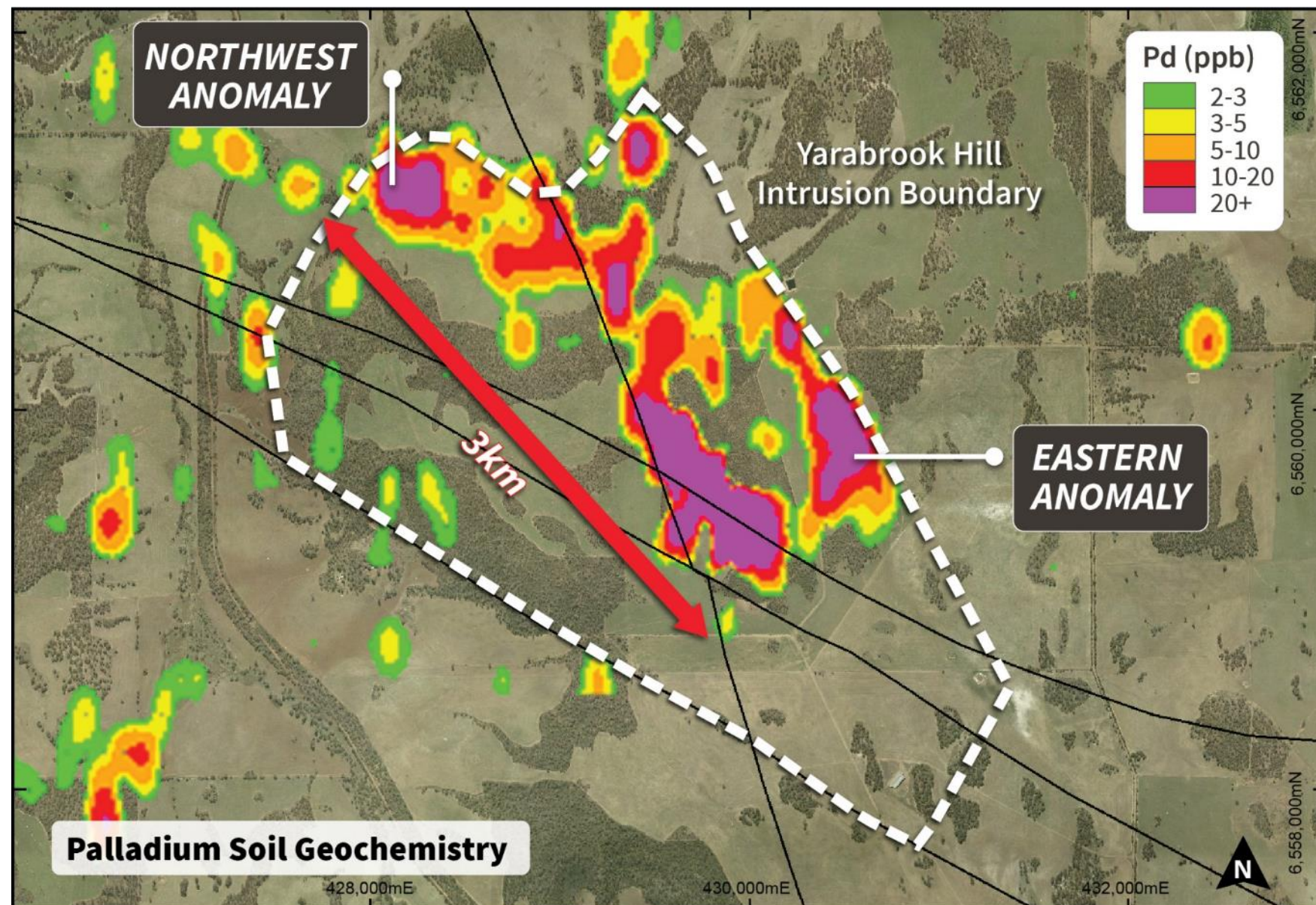
Yarabrook Hill gravity anomaly comparison with Gonneville Deposit and Hartog gravity anomaly at the same scale.

Julimar Project source materials: <https://inventum3d.com/c/chalicemining/julimar>.

# Additional Targets for RC Program

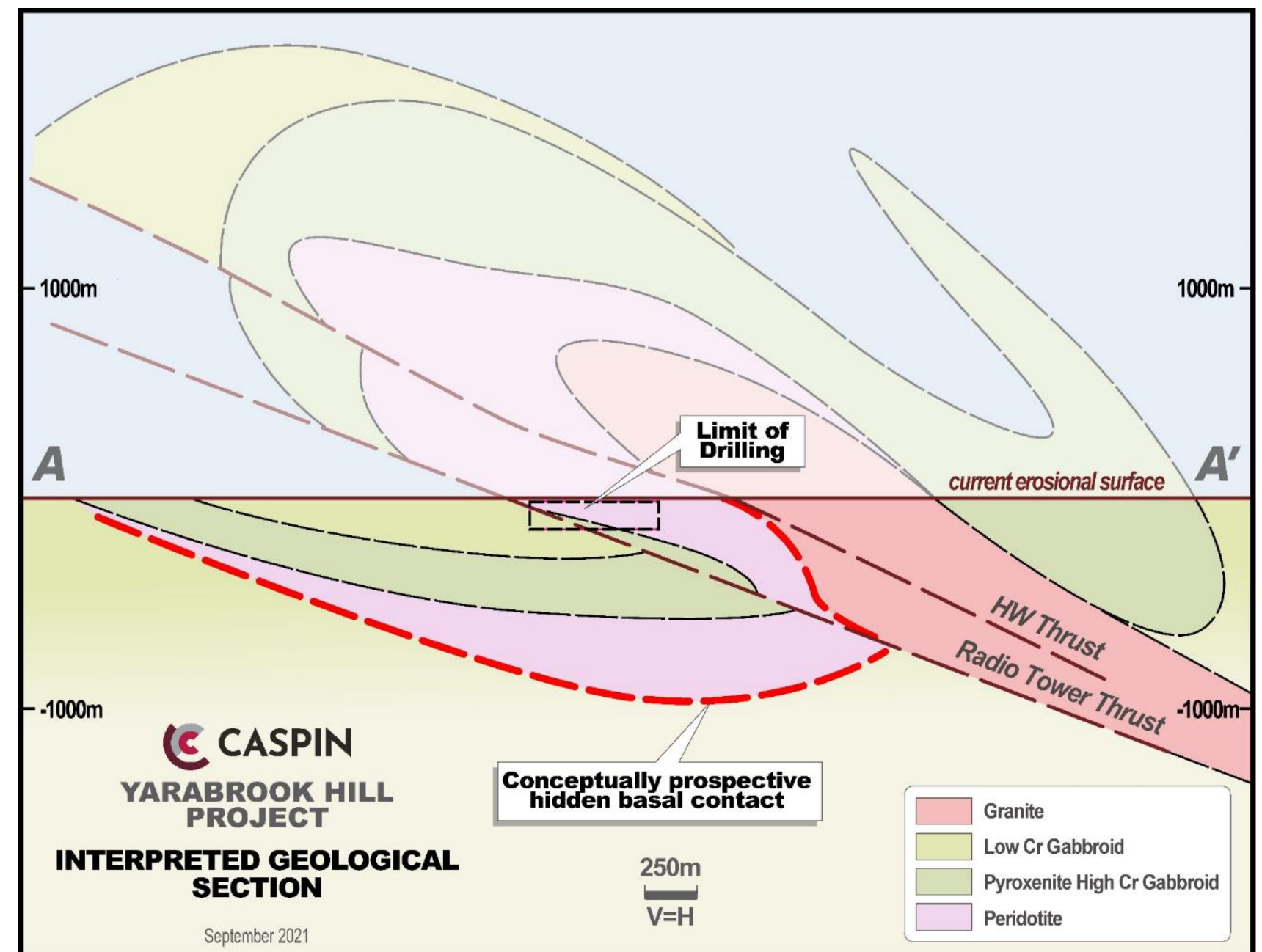
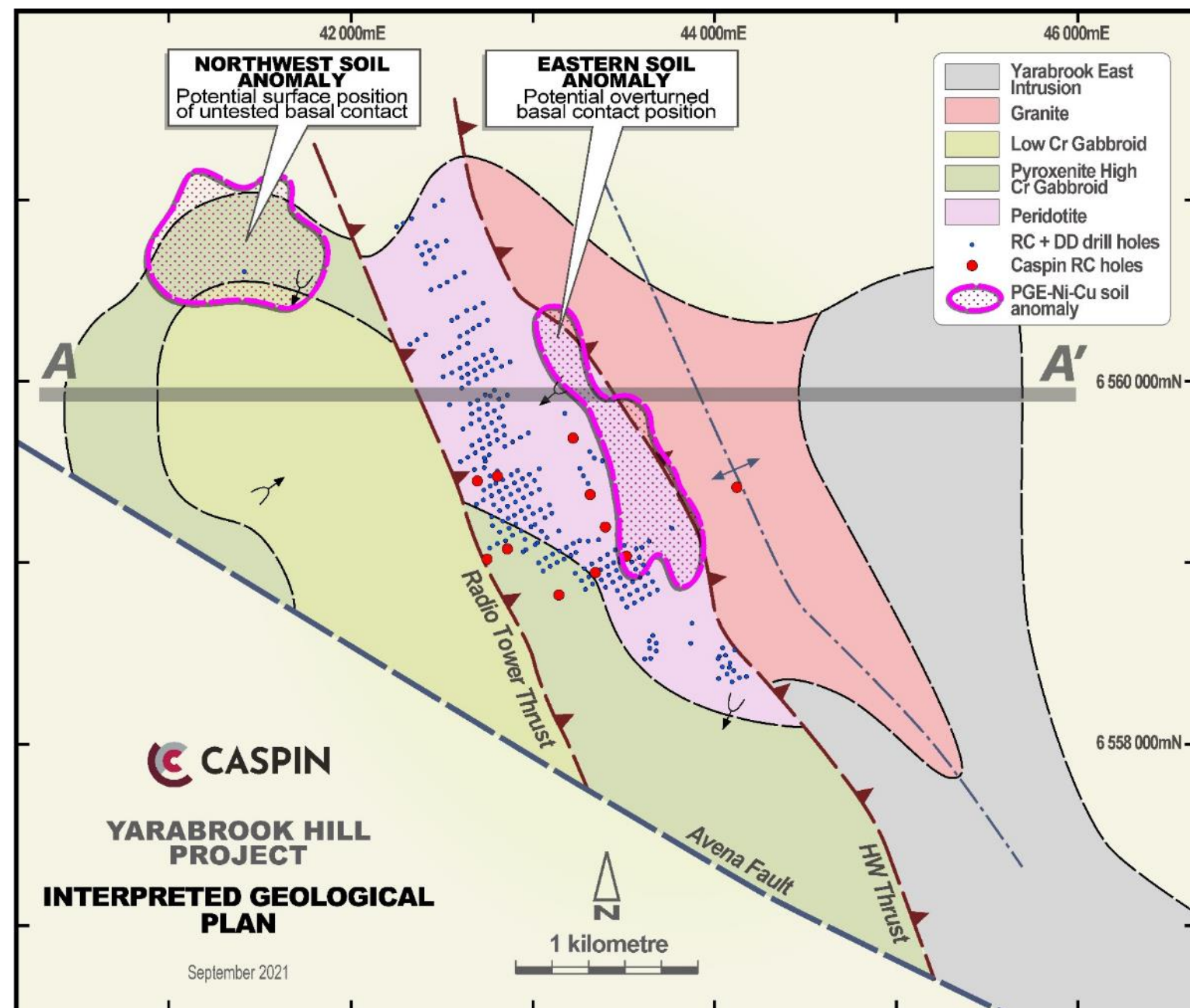
## Geochemistry and EM Targets

- Northwest and Eastern soil anomalies potentially represent basal mineralisation
- XC-22 priority target – magnetic high, gravity low, possibly serpentinised rocks, similar to Gonneville
- Plan to expand geochemical coverage to the south



## Prospective Basal Contact Yet To Be Tested

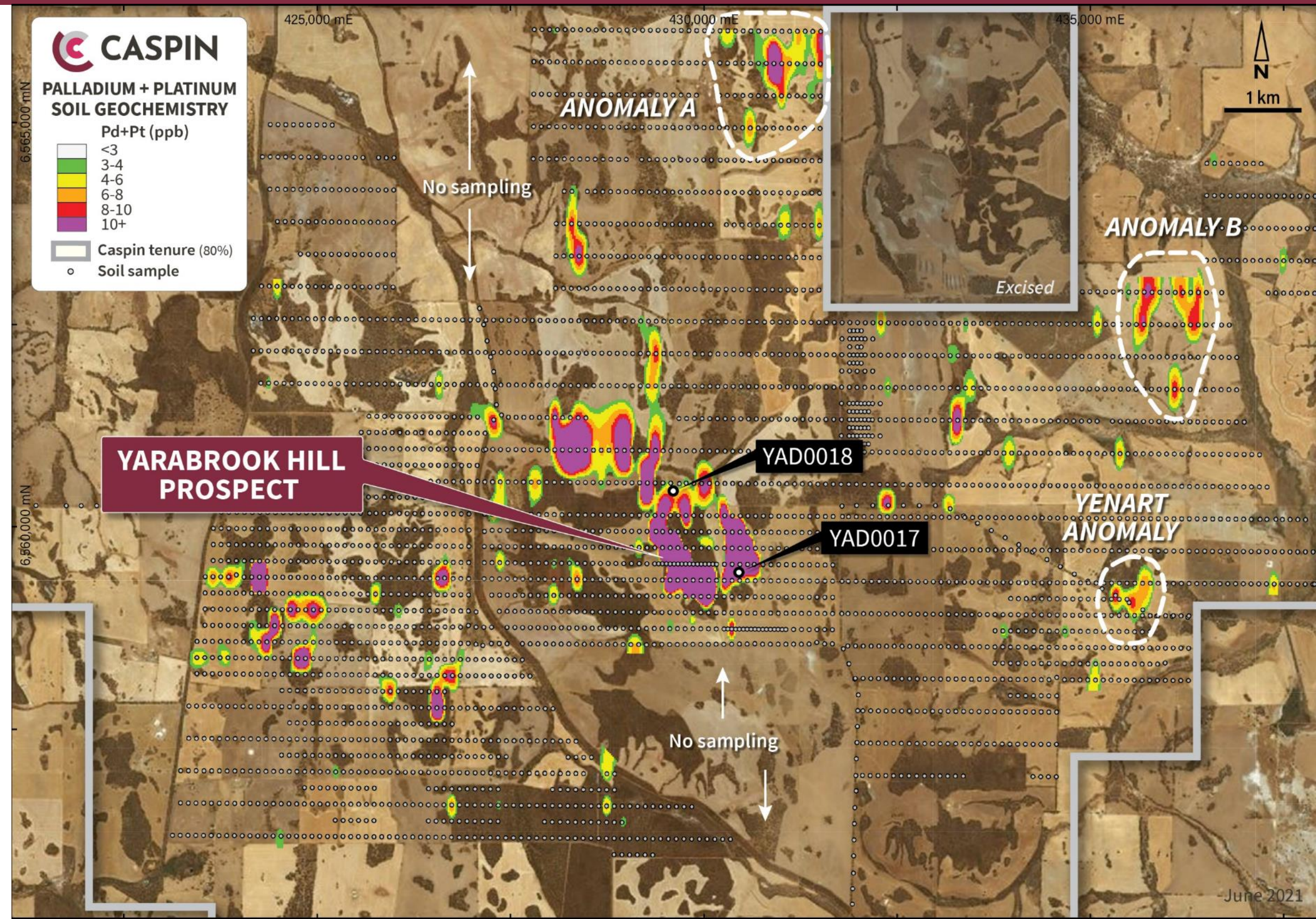
- Previous exploration limited to only a very small part of the intrusive complex
- Recognised prospectivity for **PGE-rich disseminated** mineralisation as well as **Ni-Cu massive sulphide** on basal contact



# More Anomalies Beyond Yarabrook Hill

## First Steps in Unlocking the Region

- Multiple coincident PGE-Ni-Cu geochemical anomalies
- Yarabrook Hill a standout geochemical anomaly – **peak result 331ppb, background 1ppb** - but also favourable exposure. *Now recognised significant leaching of Pd, Pt, Ni & Cu in the regolith, therefore other anomalies with poor exposure may be just as significant*
- Need to review with new gravity data
- Only 35% of the project sampled to date. Further sampling this summer



# Current Exploration - Yarabrook Hill

## RC drill program underway

- ~3,000m RC drill program completed at Yarabrook Hill to date
- Assay results from first 11 holes pending – further refinement of program on receipt
- Drilling expected to recommence in late October
- New targets to be included in RC program
- Diamond drilling also to commence in late October



Drilling at Yarabrook Hill, August 2021

# Actively Exploring a New Mineral Province



## A Busy 6 Months Ahead

- Initial results of current program expected from early October
- RC Program to resume in late October
- EIS funded diamond drilling program late-October
- Extend airborne EM coverage over northern project area
- Continue expanding soil geochemistry program



# MOUNT SQUIRES PROJECT

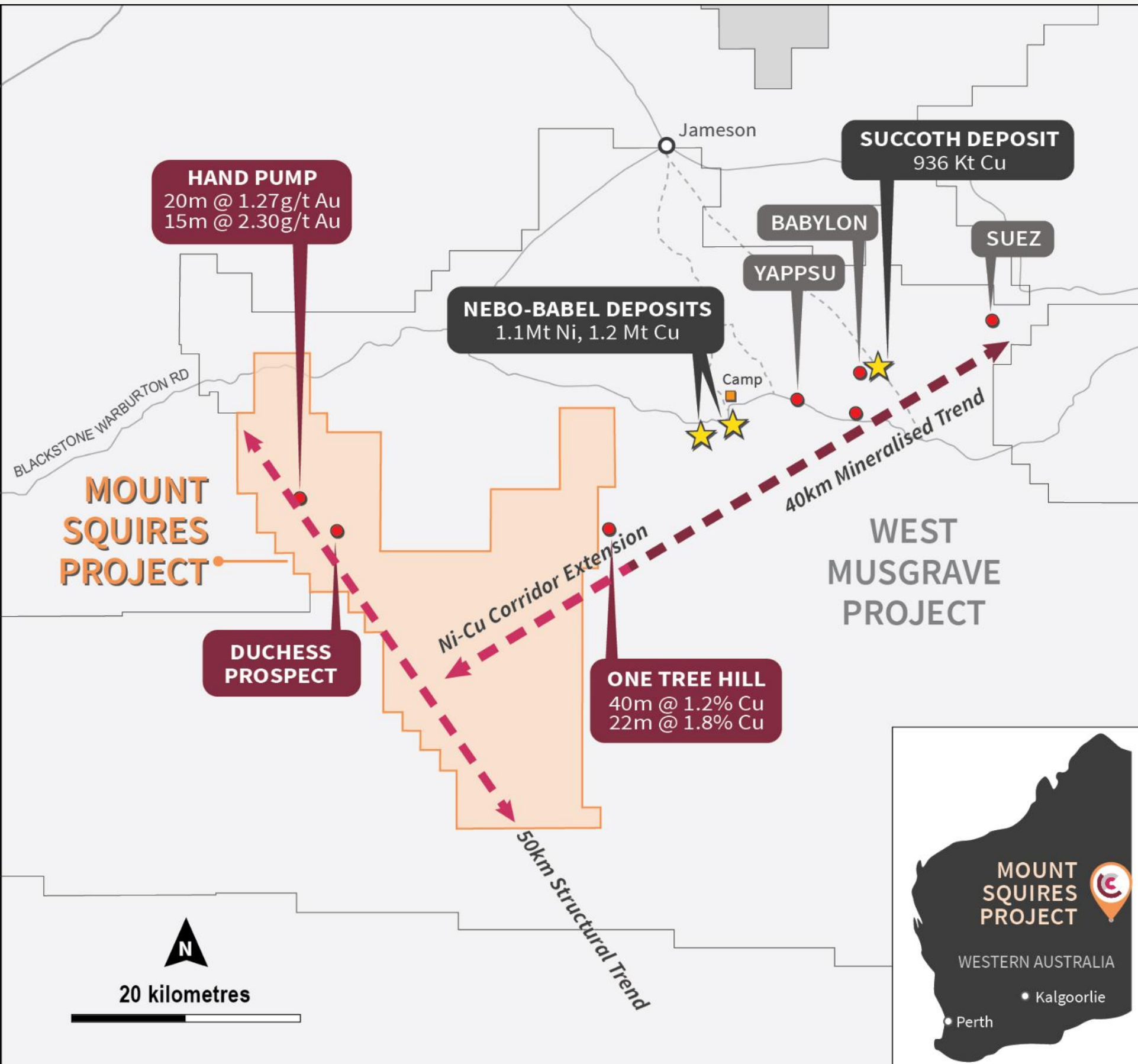
(CPN 100%)

A frontier nickel-copper  
and gold province





# Mount Squires Project



## LARGE SCALE GREENFIELD GOLD PROJECT

- A new gold frontier in the Musgrave Province
- Large ~750km<sup>2</sup> landholding
- Significant drill results include:
  - ▶ 20m @ 1.27g/t Au from 23m, including **7m @ 2.54g/t Au**
  - ▶ 15m @ 2.30g/t Au from 31m, including **9m @ 3.25g/t Au**

## POTENTIAL STRIKE EXTENSION OF NI-CU MINERALISATION

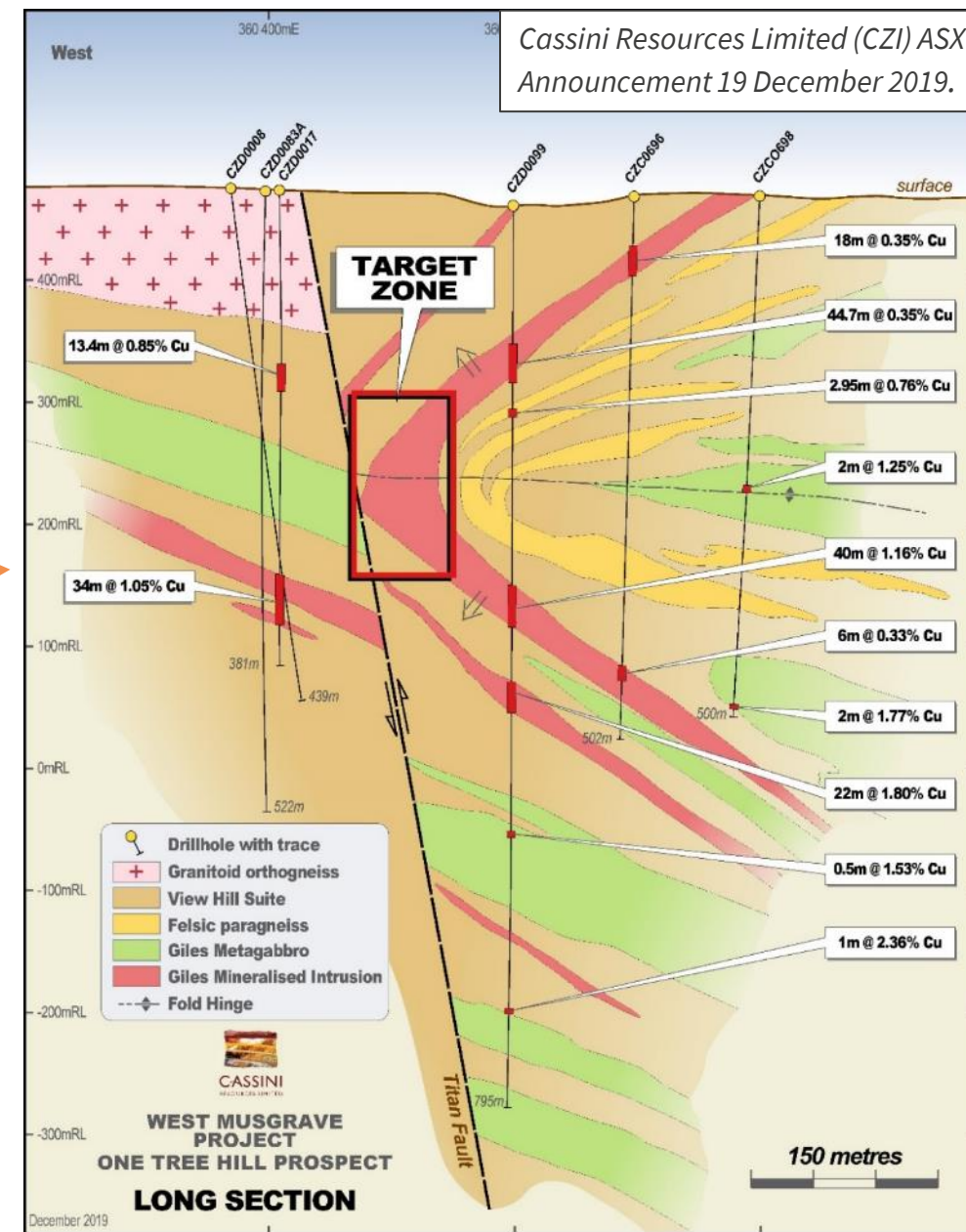
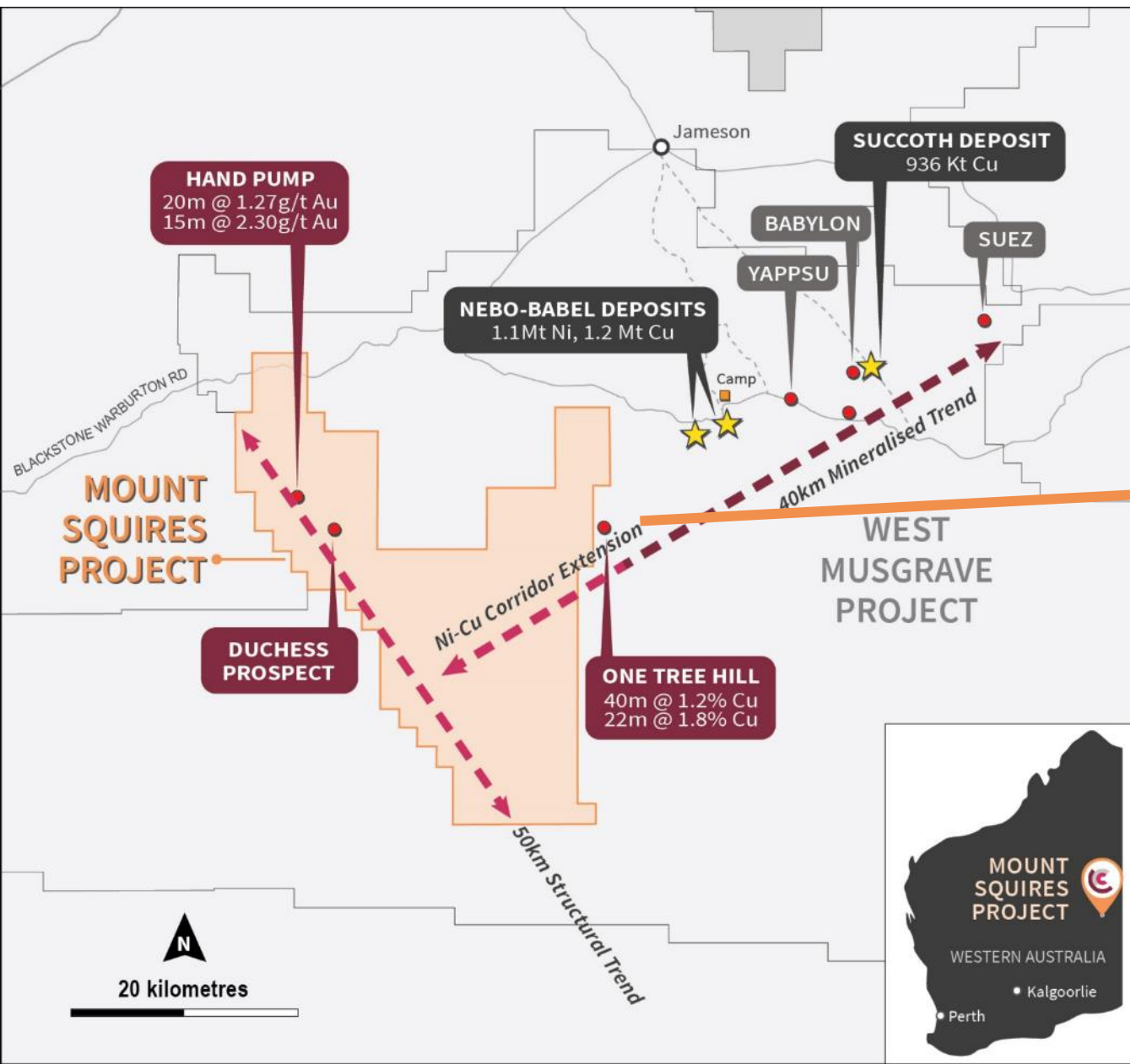
- Adjacent to OZ Minerals' One Tree Hill Prospect (**40m @ 1.2% Cu and 22m @ 1.8% Cu**)
  - ▶ 200m from tenement boundary



# A Strategic Nickel-Copper Position

## Potential Extension of Well-endowed Mineral Field

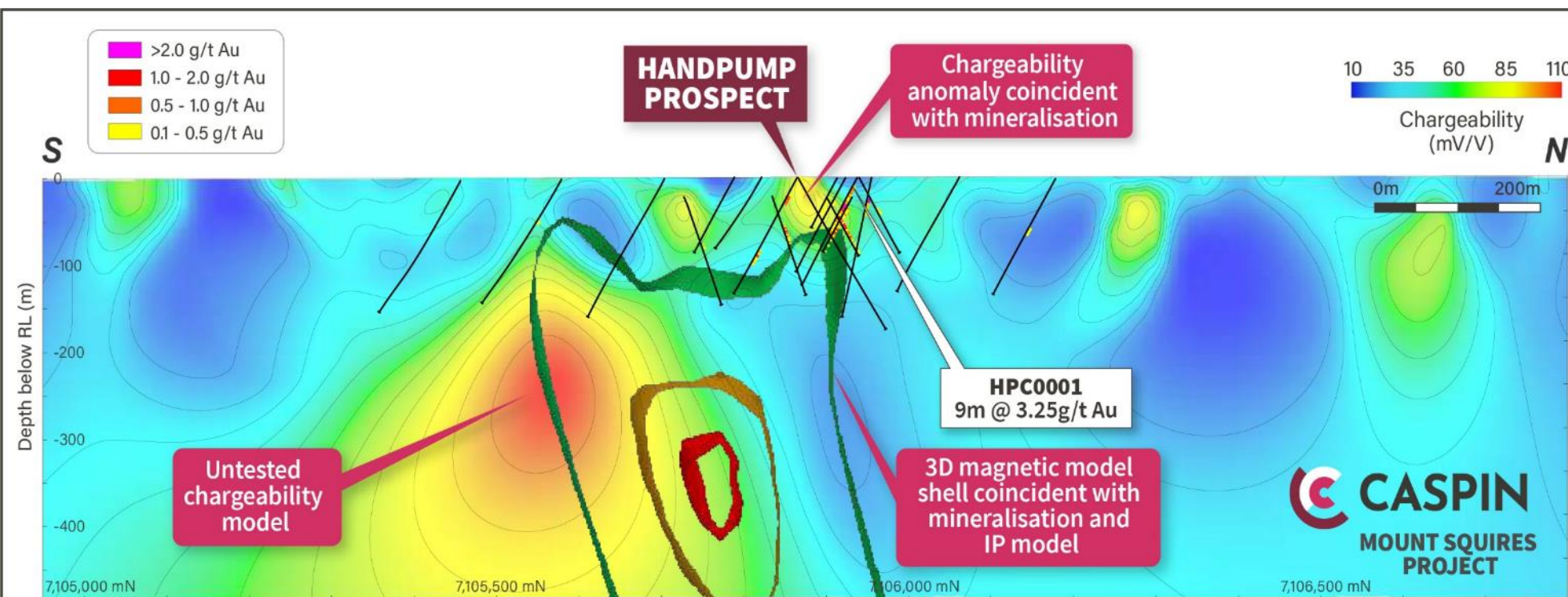
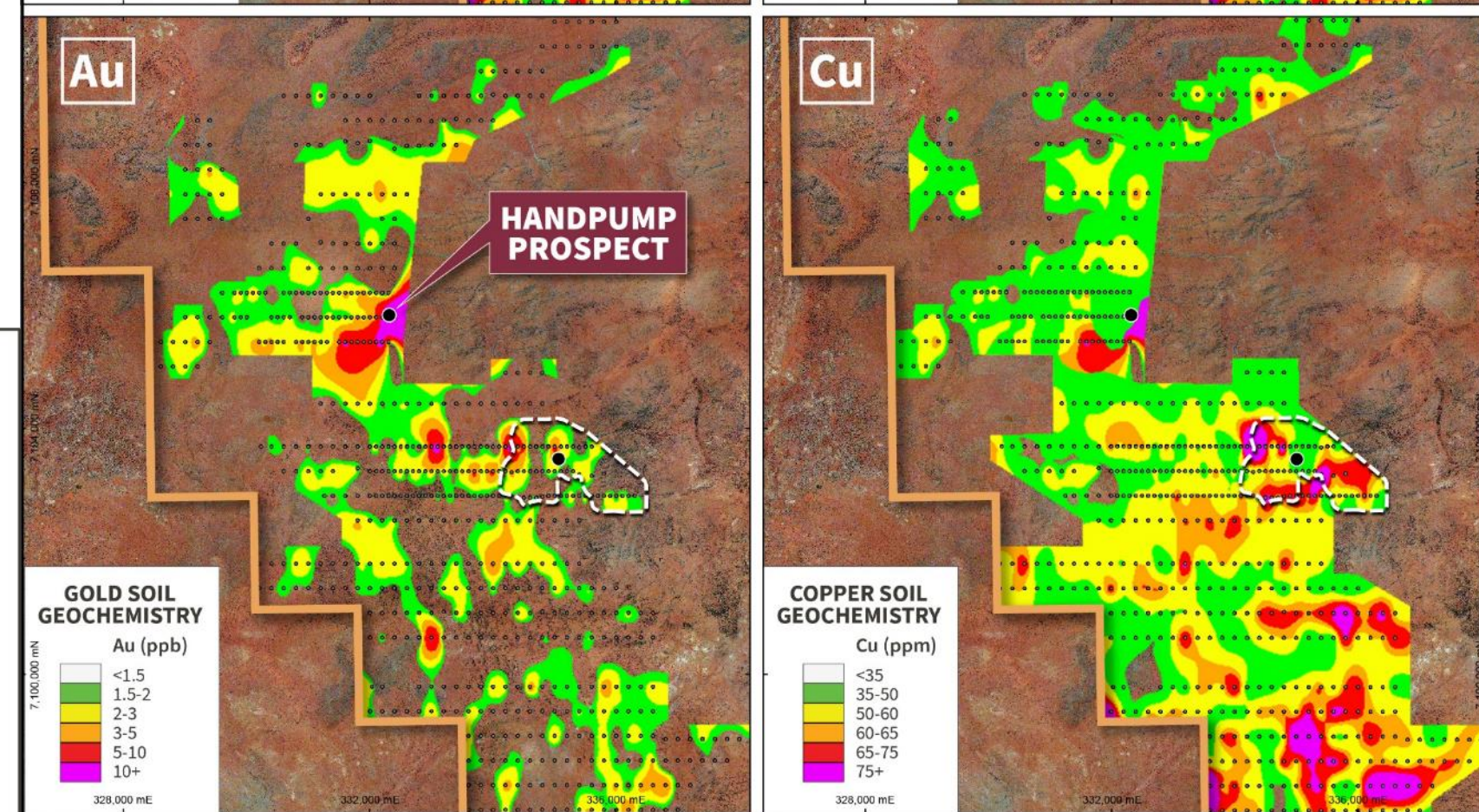
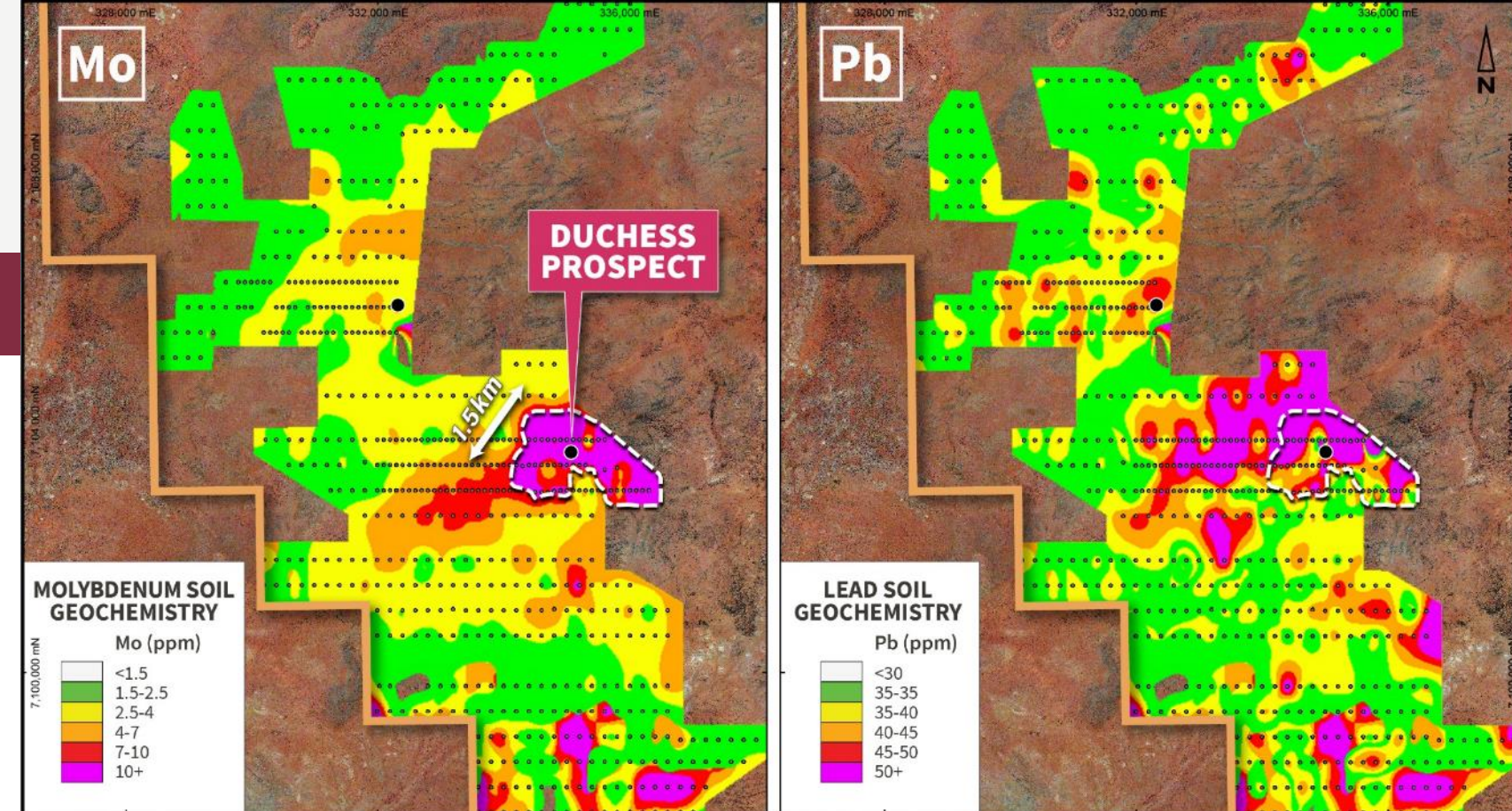
- Significant copper mineralisation at One Tree Hill Prospect (OZL)
- 40m @ 1.2% Cu & 22m @ 1.8% Cu, only 200m outside project boundary
- Mafic host rocks known to extend into project area



# A Potential Copper Porphyry System?

Duchess: Mo-Pb-Cu-Au zonation over an area >2km<sup>2</sup>

- Soil geochemical has characteristics of deeply weathered copper porphyry systems
- Gold at Handpump potentially a distal part of the system
- Handpump IP anomaly associated with circular magnetic feature and gold mineralisation



**MOUNT SQUIRES PROJECT**  
**DUCHESS PROSPECT**  
 Mo-Pb-Au-Cu Pathfinder  
 Element Comparison

**LEGEND**  
 ● Soil sample  
 ● Prospect  
 - - - Mo anomaly  
 □ Project boundary



## CASPIN INVESTMENT HIGHLIGHTS

- Yarawindah Brook holding a prime position in Australia's newest PGE-Ni-Cu district
- Assay results from first 11 RC holes imminent
- New datasets have significantly enhanced prospectivity of Yarabrook Hill
- Generating new targets for next round of drilling programs
- Mount Squires poised to add value
- Experienced team, well supported, in fundamental commodities





.....  
.....  
.....  
.....

## Caspin Resources Limited

Ground Floor, 16 Ord Street  
West Perth, Western Australia 6005

**T:** +61 8 6373 2000

**E:** [admin@caspin.com.au](mailto:admin@caspin.com.au)

**W:** [www.caspin.com.au](http://www.caspin.com.au)

**ASX: CPN**



<https://twitter.com/CaspinRes>



<https://www.linkedin.com/company/caspin-resources-limited>

