

DRILLING HOLES IN ELEPHANT COUNTRY



1. Corporate snapshot
2. Tirupati Graphite agreement, Mozambique
3. Stavely-Stawell Copper Gold Project, Victoria
4. Russells Copper Project, Western Australia
5. Next Steps

BOARD AND MANAGEMENT



David Flanagan
Executive Chairman



Tony Walsh
Company Secretary
& GM Corporate



Jeff Dowling
Non-Executive
Director



Naomi Scott
Mozambique
Director/ General
Counsel



Darryl Clark
Non-Executive
Director



Nick Jolly
General Manager
Exploration

SHARE PRICE FOR THE LAST 12 MONTHS



CAPITAL STRUCTURE

Shares on Issue (ASX Code: BAT)	2,102M
Board and Management	>5% fully diluted
Share price (as at 13 September 2021)	1.7cps
Market Capitalisation (as at 13 September 2021)	\$35 million
Cash at bank (as at 30 June 2021)	\$4.6 million
Enterprise Value	\$16 million
Top 20 Shareholders	49.8%
Listed Options (ASX Code: BATO 10 cents exercise price, expire 23/7/23)	274.5 million
Option price (ASX Code BATO)	0.5 cps

TIRUPATI GRAPHITE (TPG) – Transaction Summary

(Please also see ASX release dated 17th August 2021)



1. A\$12.5M in cash and shares to Battery Minerals Limited (BAT)
2. A\$1.5M cash and A\$11M in TPG shares
3. A\$5.5M TPG shares 8 months escrow from completion
4. A\$5.5M TPG shares 20 months escrow from completion
5. Completion now only subject to transfer approval by Mozambique Govt.
6. BAT will be 2nd largest TPG shareholder outside founders and TPG will hold 100% of the BAT Mozambique Graphite assets
7. Shareholders of BAT will be exposed to a highly experienced, successful and focused graphite development company with a market leading understanding of all aspects of the industry and rapidly growing production
8. Standard warranties, break fees and material adverse changes clauses apply
9. BAT retains additional ~A\$1.5M in Mozambique VAT refunds
10. Shareholders approved transaction – 30th Sept 2021

TIRUPATI GRAPHITE (TPG) – Transaction Summary

(Please also see ASX release dated 17th August 2021)



Battery Minerals Cash at Bank 30 June 2021	\$4.6M
Tirupati proceeds shares (@GBP 1.03)	\$11M
Tirupati proceeds cash	\$1.5M
VAT refunds due payable	\$1.5M
Victorian Govt Exploration Grant CY 2021/2022	\$0.5M
Total cash + shares + Vic Govt expl grant	\$19.1M
Battery Minerals Market Cap at 1.5cps	\$30M
Battery Minerals Enterprise Value	\$9.9M

TIRUPATI GRAPHITE; Production, Downstream Processing Capability, Growth, Cashflow¹



Production and growth

Current 12,000tpa

30,000tpa in Q2 2022

84,000tpa in 2024

The Mozambique (BAT) acquisition provides potential for significant expansion to meet customer needs >140,000tpa



Current Price	GBX105
Change	1 (0.96%)
Market Cap	£90.52m
Shares in Issue	86207767
Bid	105
Ask	109
Day High	105
Day Low	101.5
Previous close	105
Volume	243821
52 week High	158.5
52 week Low	51

Flake Production > 50% operating margins 12,000tpa current production

Sahamamy Flake	3,000tpa current
Vatomina Flake	9,000tpa current

Flake Production Expansion underway

Sahamamy + Vatomina Flake	30,000tpa in Q2 2022 84,000tpa in 2024
---------------------------	---

Downstream Processing Capability

99.995% TGC Purification	1,200tpa
Graphene Production	10kg/day

Tirupati Graphite Operations

FY 20/21 TPG Key results	USD
Average Flake Production Cost	\$389/t
Average Flake Price achieved	\$801/t
Average operating margin	\$412/t

- At a cash margin of USD\$412/t this presents a significant cashflow business at 30,000tpa by Q2 2022, 84,000tpa in 2024
- Offtake with 1st tier advanced electronics companies and vehicle manufacturers in Europe, Japan, US, Taiwan and, South Korea

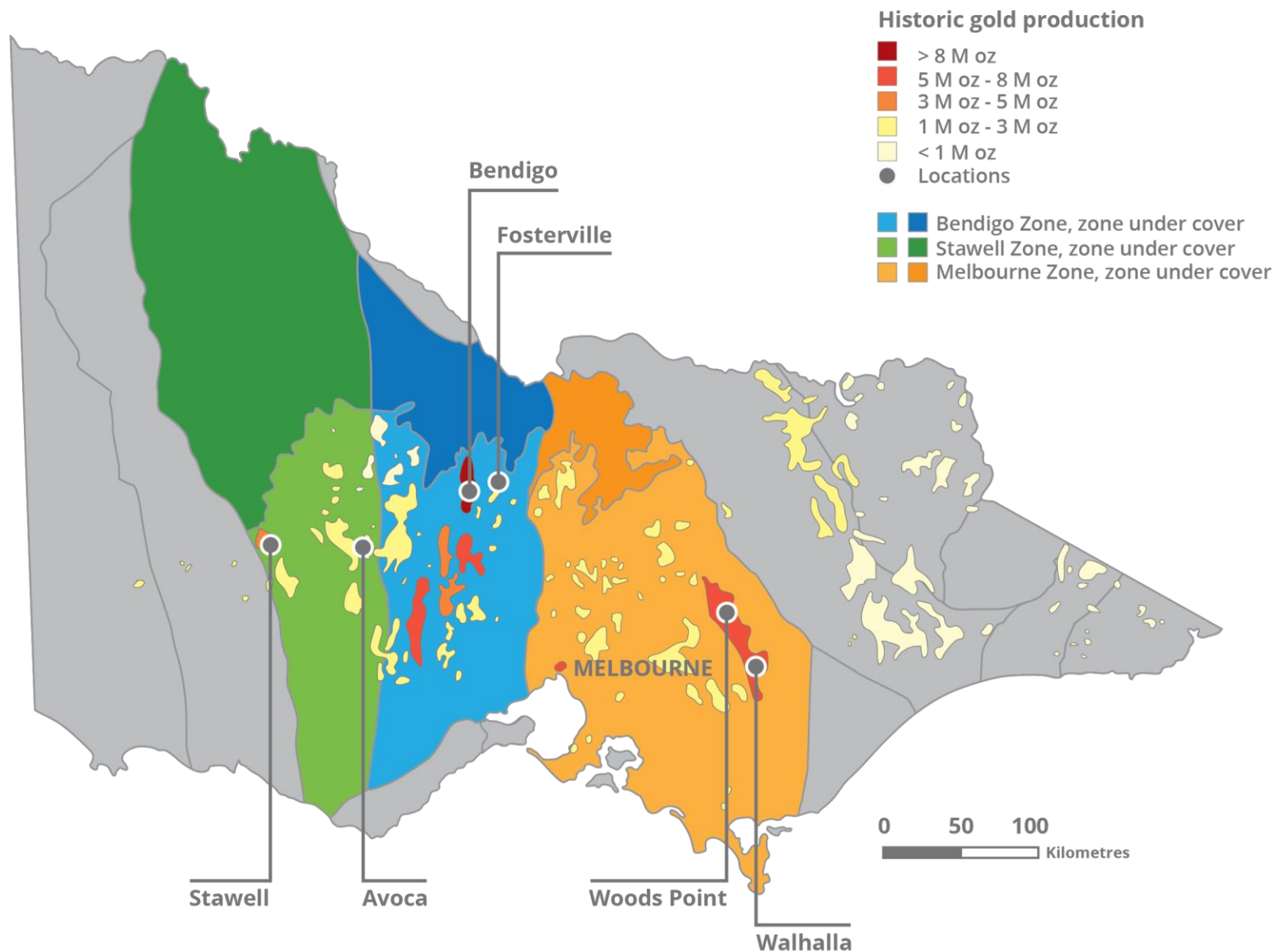
1. Data sourced from "Trading Results & Update on 31 March 21 Accounts" announced 24th of August. Data Compiled 29th September

1. TPG is AIM/OTCQ listed, producing 12,000tpa graphite, growing to 30,000tpa in Q2 and 84,000tpa in 2024
2. Operating cashflow positive, 2 operations in Madagascar, full suite of downstream processing in India
3. This agreement brings 40 years of advanced capability in Graphite development, a major strategic advantage.
4. Environmentally sustainable processing techniques delivering high purity pre-anode as well as expandable graphite products
5. Developed IP for aluminium/graphene alloy as copper replacement
6. Globally competitive on cost and quality in all graphite products
7. Market capitalisation - approximately \$A183M, strong liquidity
8. TPG are perfectly placed to maximise value from the asset



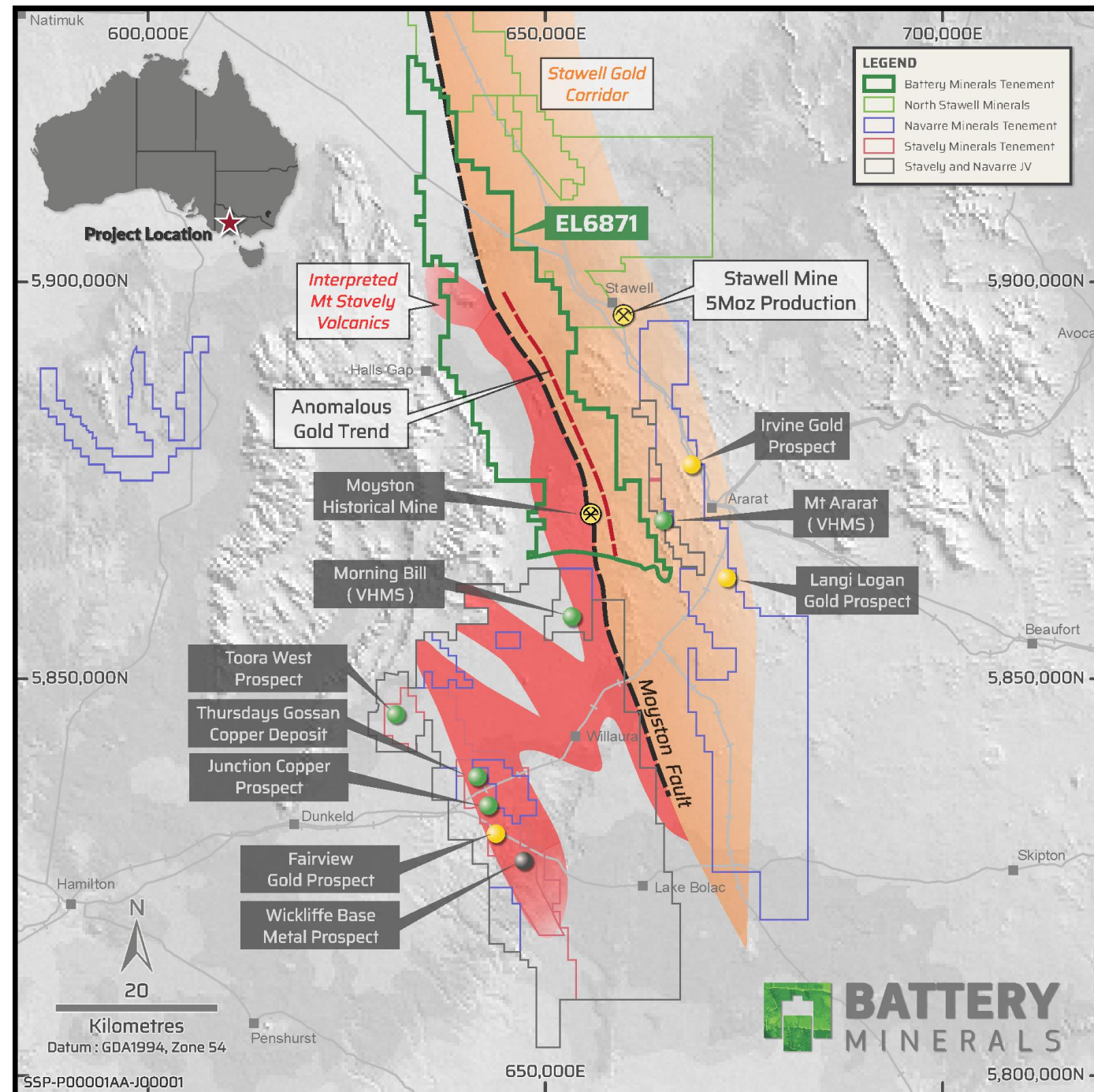
VICTORIA SIGNIFICANT OPPORTUNITY

1. <https://earthresources.vic.gov.au/geology-exploration/minerals/metals/gold>



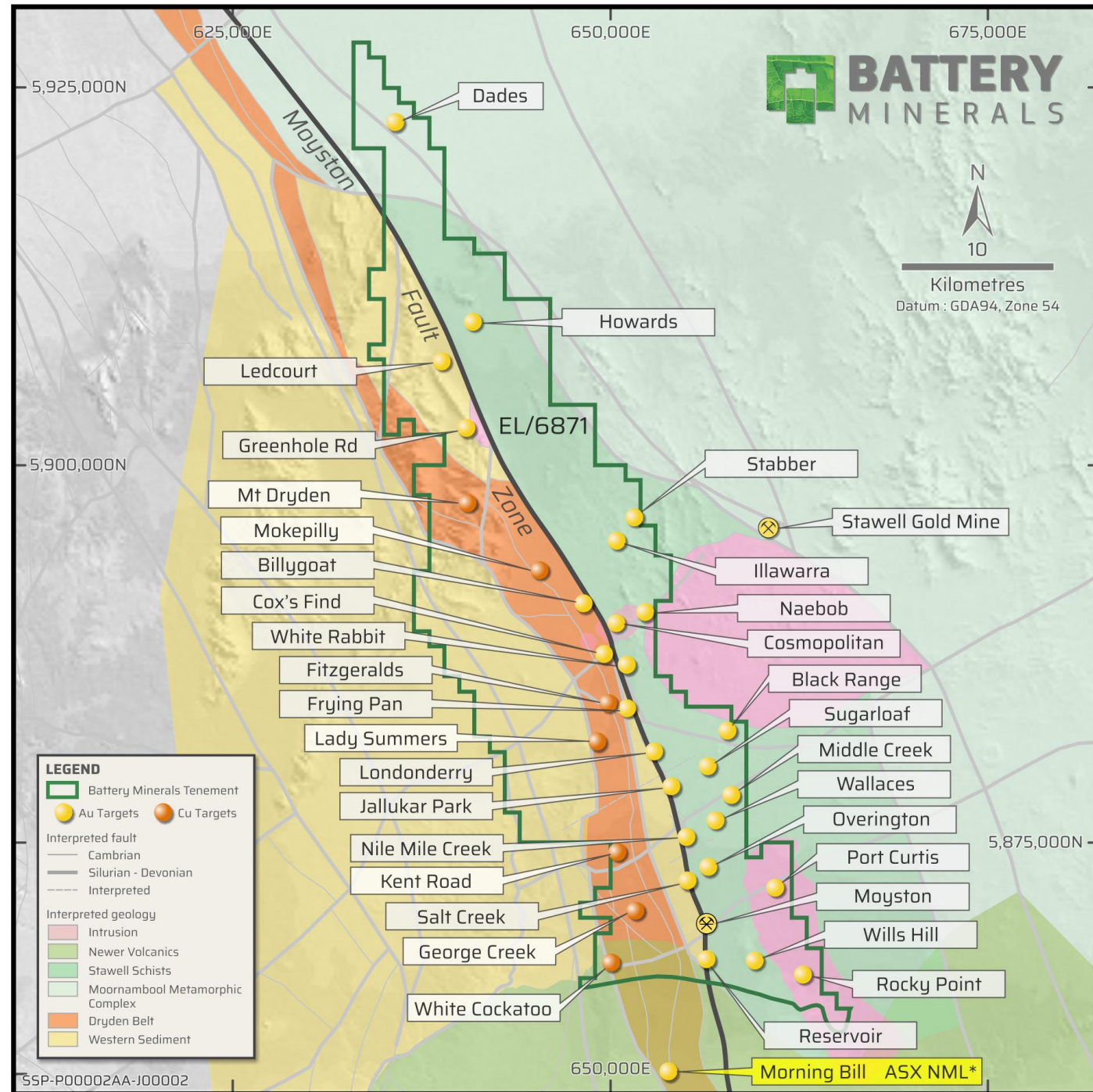
LARGE LANDHOLDING PAST PRODUCTION PROVEN STRUCTURES PROSPECTIVE ROCKS MAJOR SYSTEM LIMITED EXPLORATION

- Tenement Granted October 2020
- 721sqkm of under-explored tenure
- Last sustained exploration effort early 1990s (Gold A\$400/oz)
- 40 km strike and 117sqkm of Mt Stavelly Volcanics
- 67 km strike Moyston Fault
- 343 sqkm of Stawell Gold Corridor
- Historic drilling ~1,000 holes average depth 36 metres, clustered and selectively sampled & analysed



EXPLORATION TARGETS

- ~30 years since last explored
- Moyston Fault Corridor Au, Ni
- Stawell Gold Corridor
- Stavely Volcanics Au, Cu, Ni
- Historical production ~100,000oz Au
- Improved Techniques
- Mag, Gravity, Worldview, Lidar, EM
- Soils and Rock Chip assay detection limits
- Air Core Drilling advances
- Consolidating Land Access





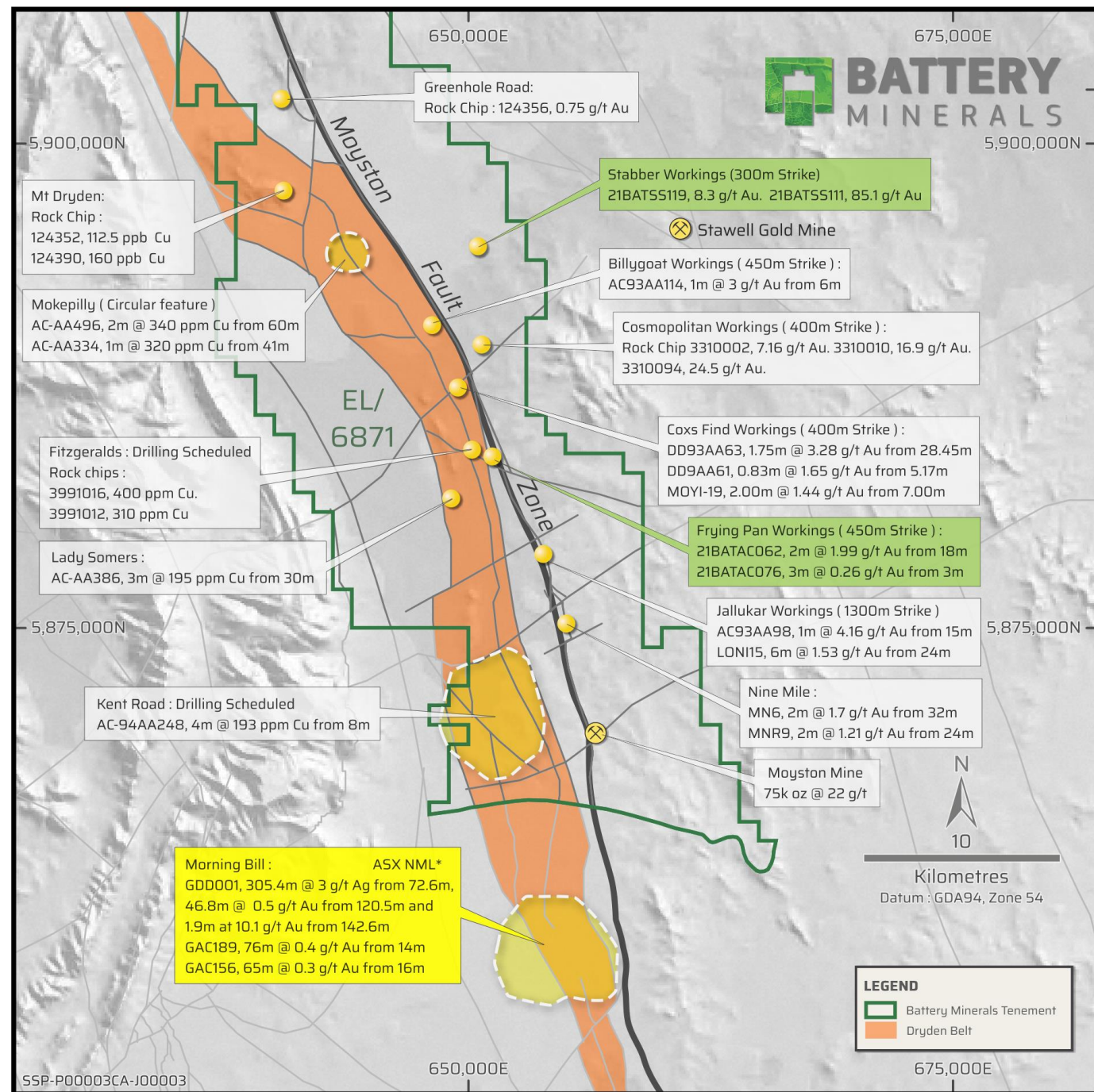
PRIORITY DRILL TARGETS¹

NEXT 3 MONTHS

375 HOLES, 15,000 METRES

- **Nine Mile** : drilling 2m @ 1.7 g/t Au, historical workings in Jallukar, Moyston Fault
- **Kent Road** : float & subcrop, altered porphyry, soils 4m @ 193 ppm Cu, NW fault, mag feature in volcanics
- **Frying Pan**: historical workings, Rock Chips > 5g/t Au, drilling 2m @ 1.99g/t Au, NE fault intersecting Moyston Fault
- **Cox's Find**: historical workings, drilling 1.75m @ 3.28 g/t Au rock chips >5 g/t Au, Soils >50ppb Au, NW fault
- **Cosmopolitan**: strike extent of historical workings >22koz Au production, rock chips >10 g/t Au
- **Fitzgerald's**: Cu rockchips >300ppm, important linking fault cutting prospective volcanic sequence, Priority Mag feature

1. Please read this disclosure in conjunction with Battery Minerals' ASX release dated 14th October 2021 "Technical Summary of Historical Exploration on the Stavelly - Stawell Copper Gold Project". All data presented in white boxes is historical and it pre-dates JORC 2012. While considered sufficiently reliable to define areas of exploration focus, Battery Minerals considers the data is not of sufficient quality to contribute to JORC-compliant resources, reserves or exploration targets.





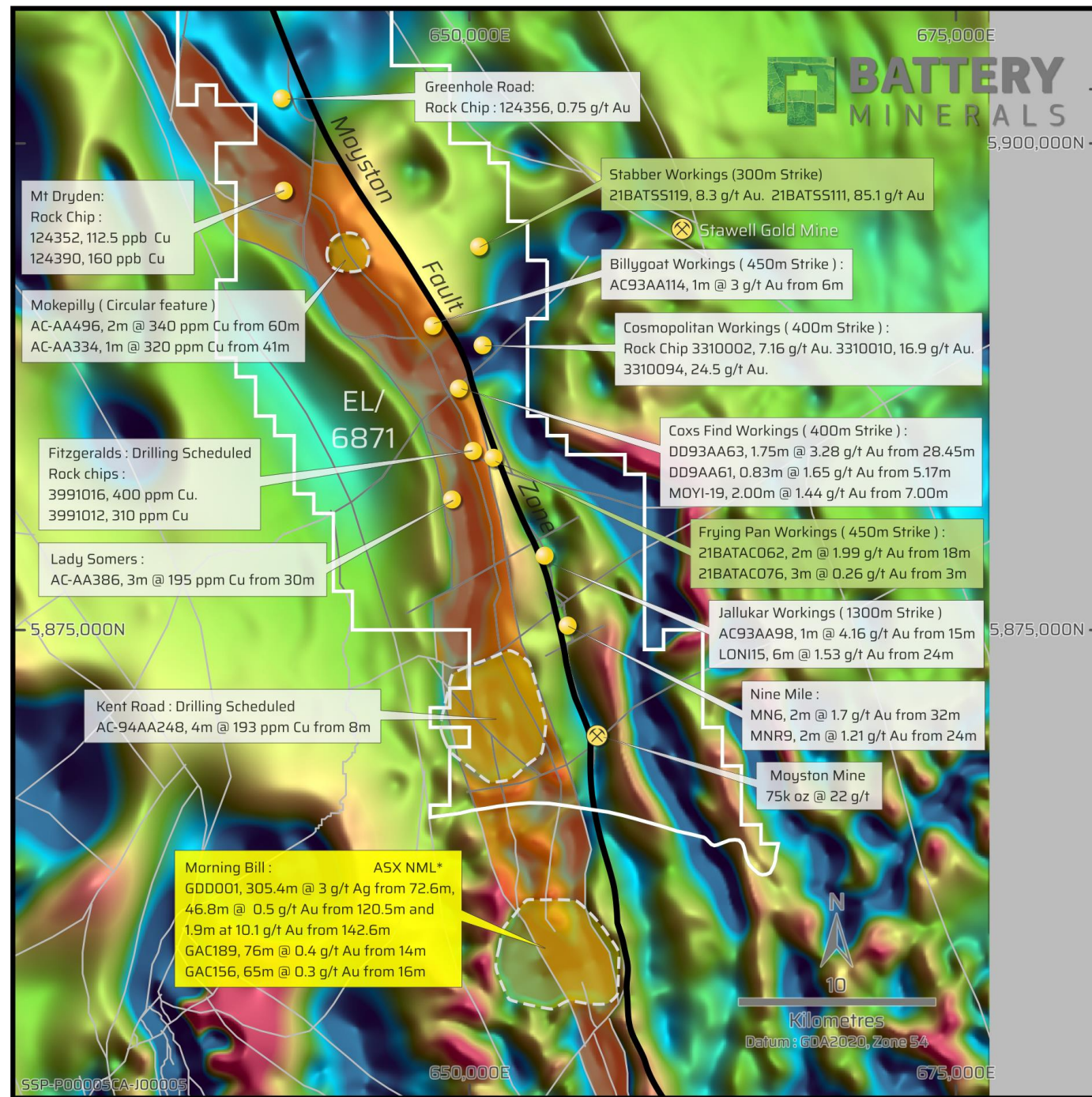
PRIORITY DRILL TARGETS¹

NEXT 3 MONTHS

375 HOLES, 15,000 METRES

- **Nine Mile** : drilling 2m @ 1.7 g/t Au, historical workings in Jallukar, Moyston Fault
- **Kent Road** : float & subcrop, altered porphyry, soils 4m @ 193 ppm Cu, NW fault, mag feature in volcanics
- **Frying Pan**: historical workings, Rock Chips > 5g/t Au, drilling 2m @ 1.99g/t Au, NE fault intersecting Moyston Fault
- **Cox's Find**: historical workings, drilling 1.75m @ 3.28 g/t Au rock chips >5 g/t Au, Soils >50ppb Au, NW fault
- **Cosmopolitan**: strike extent of historical workings >22koz Au production, rock chips >10 g/t Au
- **Fitzgerald's**: Cu rockchips >300ppm, important linking fault cutting prospective volcanic sequence, Priority Mag feature

1. Please read this disclosure in conjunction with Battery Minerals' ASX release dated 14th October 2021 "Technical Summary of Historical Exploration on the Stavely - Stawell Copper Gold Project". All data presented in white boxes is historical and it pre-dates JORC 2012. While considered sufficiently reliable to define areas of exploration focus, Battery Minerals considers the data is not of sufficient quality to contribute to JORC-compliant resources, reserves or exploration targets.



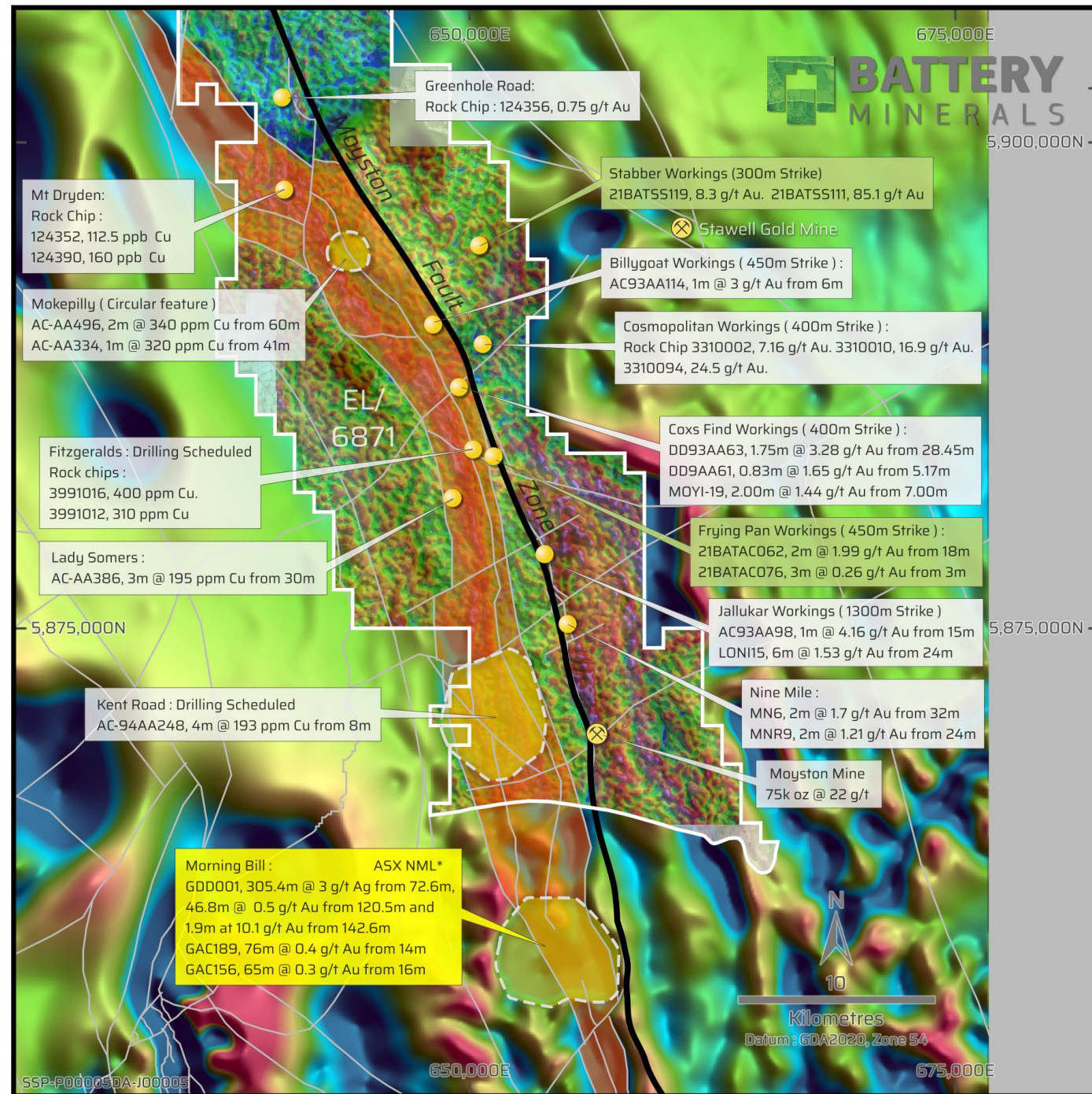
PRIORITY DRILL TARGETS¹

NEXT 3 MONTHS

375 HOLES, 15,000 METRES

- **Nine Mile** : drilling 2m @ 1.7 g/t Au, historical workings in Jallukar, Moyston Fault
- **Kent Road** : float & subcrop, altered porphyry, soils 4m @ 193 ppm Cu, NW fault, mag feature in volcanics
- **Frying Pan**: historical workings, Rock Chips > 5g/t Au, drilling 2m @ 1.99g/t Au, NE fault intersecting Moyston Fault
- **Cox's Find**: historical workings, drilling 1.75m @ 3.28 g/t Au rock chips >5 g/t Au, Soils >50ppb Au, NW fault
- **Cosmopolitan**: strike extent of historical workings >22koz Au production, rock chips >10 g/t Au
- **Fitzgerald's**: Cu rockchips >300ppm, important linking fault cutting prospective volcanic sequence, Priority Mag feature

1. Please read this disclosure in conjunction with Battery Minerals' ASX release dated 14th October 2021 "Technical Summary of Historical Exploration on the Stavely - Stawell Copper Gold Project". All data presented in white boxes is historical and it pre-dates JORC 2012. While considered sufficiently reliable to define areas of exploration focus, Battery Minerals considers the data is not of sufficient quality to contribute to JORC-compliant resources, reserves or exploration targets.



BATTERY MINERALS

650,000E 675,000E

5,900,000N

Greenhole Road:
Rock Chip : 124356, 0.75 g/t Au

Stabber Workings (300m Strike)
21BATSS119, 8.3 g/t Au. 21BATSS111, 85.1 g/t Au

Stawell Gold Mine

Billygoat Workings (450m Strike) :
AC93AA114, 1m @ 3 g/t Au from 6m

Cosmopolitan Workings (400m Strike) :
Rock Chip 3310002, 7.16 g/t Au. 3310010, 16.9 g/t Au. 3310094, 24.5 g/t Au.

Coxs Find Workings (400m Strike) :
DD93AA63, 1.75m @ 3.28 g/t Au from 28.45m
DD9AA61, 0.83m @ 1.65 g/t Au from 5.17m
MOYI-19, 2.00m @ 1.44 g/t Au from 7.00m

Frying Pan Workings (450m Strike) :
21BATAC062, 2m @ 1.99 g/t Au from 18m
21BATAC076, 3m @ 0.26 g/t Au from 3m

Jallukar Workings (1300m Strike)
AC93AA98, 1m @ 4.16 g/t Au from 15m
LONI15, 6m @ 1.53 g/t Au from 24m

Nine Mile :
MN6, 2m @ 1.7 g/t Au from 32m
MNR9, 2m @ 1.21 g/t Au from 24m

Moyston Mine
75k oz @ 22 g/t

Moyston Fault Zone

EL/ 6871

Mt Dryden:
Rock Chip :
124352, 112.5 ppb Cu
124390, 160 ppb Cu

Mokepilly (Circular feature)
AC-AA496, 2m @ 340 ppm Cu from 60m
AC-AA334, 1m @ 320 ppm Cu from 41m

Fitzgeralds : Drilling Scheduled
Rock chips :
3991016, 400 ppm Cu.
3991012, 310 ppm Cu

Lady Somers :
AC-AA386, 3m @ 195 ppm Cu from 30m

Kent Road : Drilling Scheduled
AC-94AA248, 4m @ 193 ppm Cu from 8m

Morning Bill : ASX NML*
GDD001, 305.4m @ 3 g/t Ag from 72.6m,
46.8m @ 0.5 g/t Au from 120.5m and
1.9m at 10.1 g/t Au from 142.6m
GAC189, 76m @ 0.4 g/t Au from 14m
GAC156, 65m @ 0.3 g/t Au from 16m

5,875,000N

650,000E 675,000E

SSP-P00003DA-J00003

LEGEND

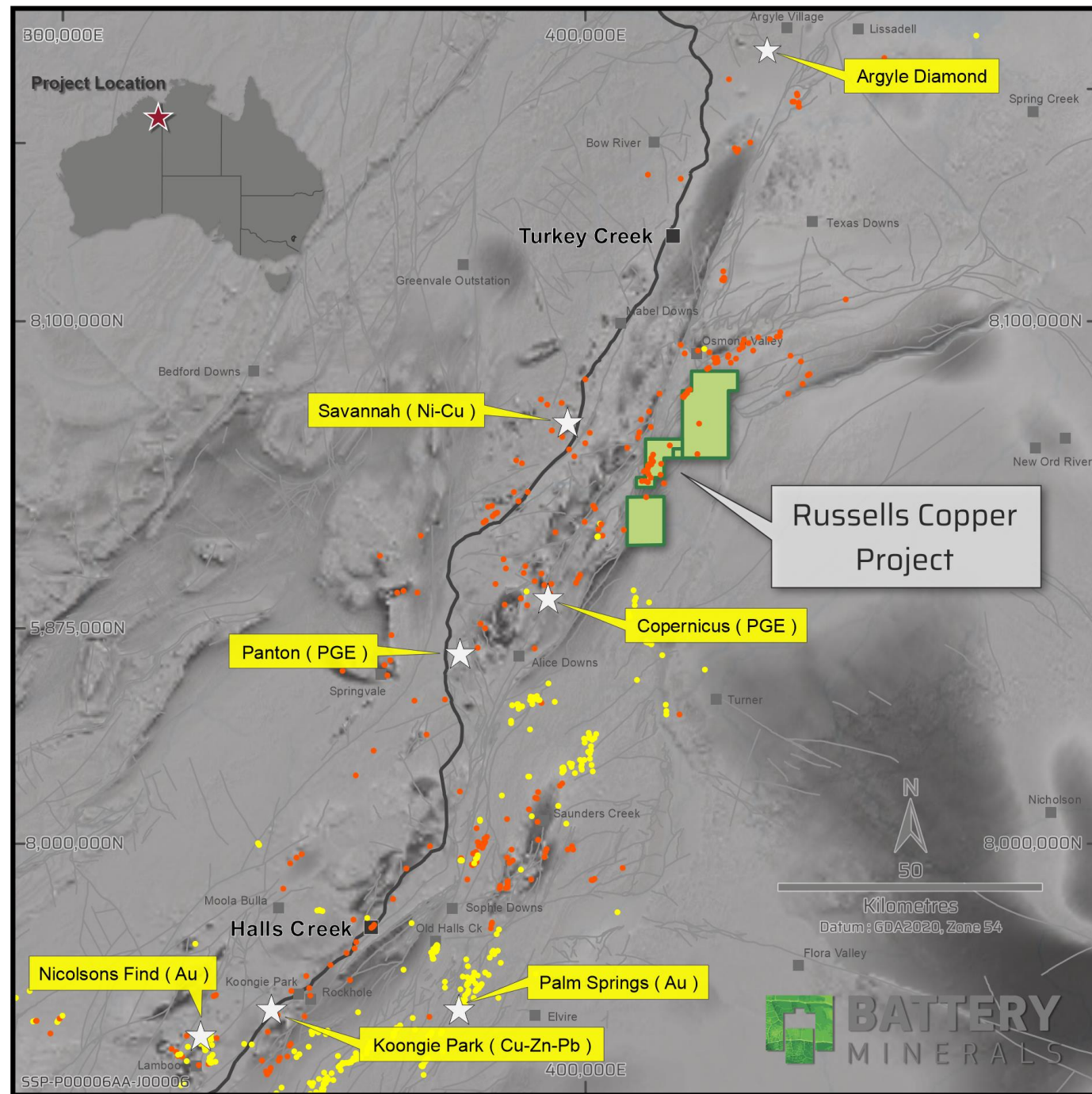
- Battery Minerals Tenement
- Land Ownership
- Dryden Belt

Kilometres
Datum : GDA94, Zone 54



RUSSELLS COPPER PROJECT WITH REGIONAL NICKEL, PGE, COPPER AND GOLD PROSPECTS

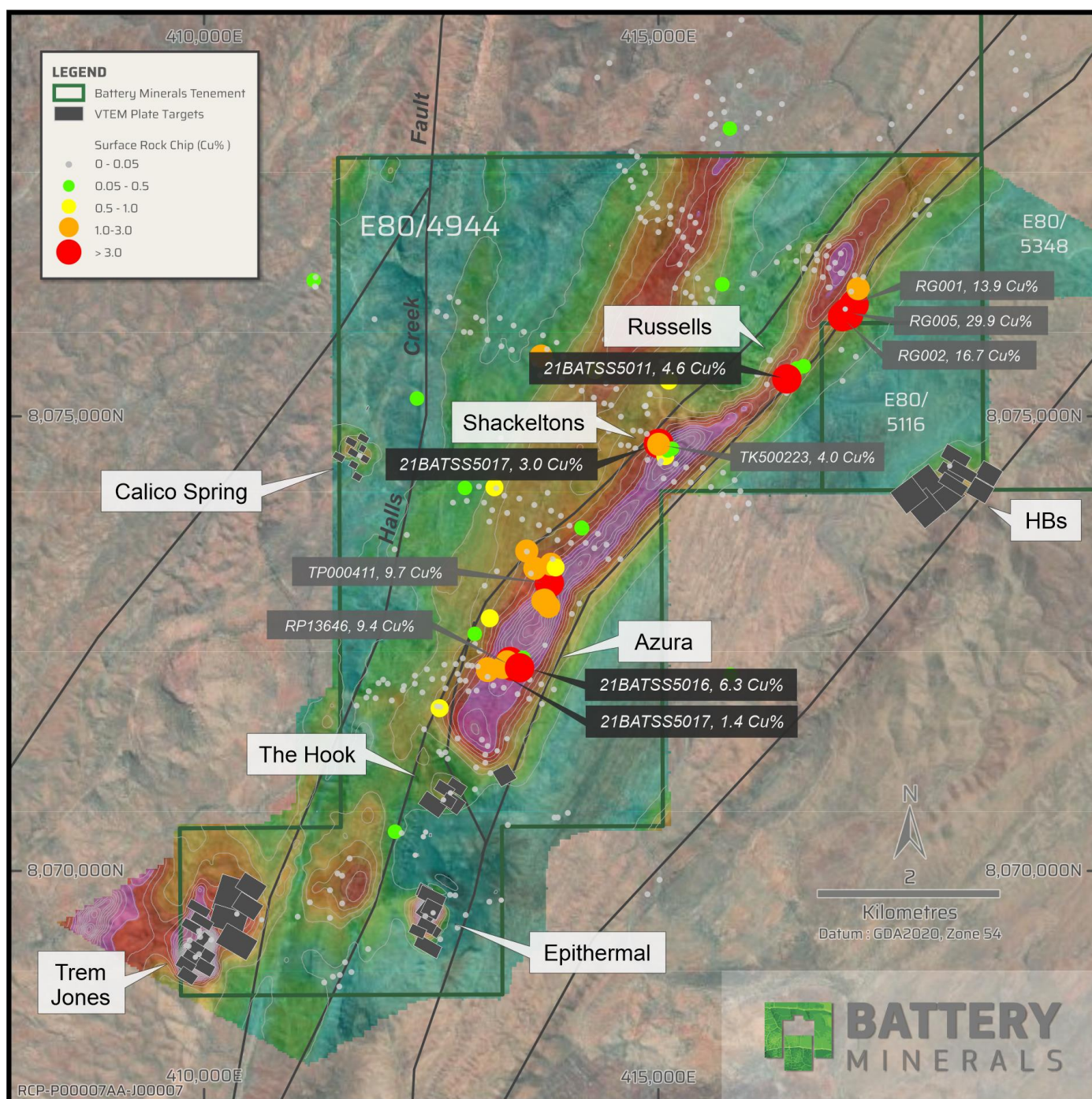
- Halls Creek Tectonic Zone –
confluence of major structures and
mineralization styles;
 - Michigan Cu-Ag
 - Sulphide Ni+Cu+PGEs
 - Skarn Cu-Au
 - Halls Creek Fault related
orogenic Au+Cu/Pb/Zn/Ag



RUSSELLS COPPER PROJECT²

- Halls Creek Tectonic Zone – confluence of major structures
- Only 13 historic drill holes
- Soils >100 ppm Cu 16km strike (including ELA80/5348)
- Rock chips to 30% Cu at surface
- High quality VTEM data flown
- Vendors include Kimberley traditional owners (47%)
- Heritage agreements in place
- Total 13 holes drilled in entire project with historical intercepts up to 4m @ 0.38% Cu (*incl 1m @ 0.52% Cu*)

2. Please read this disclosure in conjunction with Battery Minerals' ASX release dated 22nd June 2021 "Battery Minerals to acquire highly promising WA copper project"



NEXT STEPS

Mozambique Graphite Projects

1. Complete administrative transfer to Tirupati Graphite and receive \$12.5M in cash and shares – **ongoing**

Stavely – Stawell Copper Gold Project

1. Recommence drilling in September – **ongoing**
2. Sustain land access and community engagement– **ongoing**
3. Process 200m spaced Falcon gravity data – **ongoing**
4. Field mapping and soil sampling – **ongoing**
5. Integrate gravity, magnetics, EM, soils, new drilling and mapping for prioritised targets – **ongoing**

Russells Copper Project

1. Process EM data, finalise drill targets – **ongoing**
2. Extensive heritage impact assessment - **planned**
3. EIS application for deep diamond drilling - **submitted**
4. RC or diamond drill first 3 EM conductor prospects

DISCLAIMER



Forward Looking Statements

- Statements and material contained in this Presentation, particularly those regarding possible or assumed future performance, resources or potential growth of Battery Minerals Limited, industry growth or other trend projections are, or may be, forward looking statements. Such statements relate to future events and expectations and, as such, involve known and unknown risks and uncertainties. Such forecasts and information are not a guarantee of future performance and involve unknown risk and uncertainties, as well as other factors, many of which are beyond the control of Battery Minerals Limited. Information in this presentation has already been reported to the ASX.
- Battery Minerals confirms that all the material assumptions underpinning the production targets for its Montepuez and Balama Central graphite projects and any of the forecast financial information derived from these production targets, in the 4 and 12 December 2018 ASX announcements, on these projects continue to apply at the date of release of this presentation and have not materially changed. Battery Minerals confirms that it is not aware of any new information or data that all material assumptions and technical parameters underpinning the estimates in the 4 and 12 December 2018 announcements continue to apply and have not materially changed.

Competent Persons Statement

- All references to future production and production & shipping targets and port access made in relation to Battery Minerals are subject to the completion of all necessary feasibility studies, permit applications, construction, financing arrangements, port access and execution of infrastructure-related agreements. Where such a reference is made, it should be read subject to this paragraph and in conjunction with further information about the Mineral Resources and Ore Reserves, as well as the relevant competent persons' statements.
- Any references to Exploration Results, Ore Reserve and Mineral Resource estimations should be read in conjunction with the competent person statements included in the ASX announcements referenced in this presentation as well as Battery Minerals' other periodic and continuous disclosure announcements lodged with the ASX, which are available on the Battery Minerals' website.

- The information in this report that relates to Battery Minerals' Mineral Resources or Ore Reserves is a compilation of previously published data for which Competent Persons consents were obtained. Their consents remain in place for subsequent releases by Battery Minerals of the same information in the same form and context, until the consent is withdrawn or replaced by a subsequent report and accompanying consent.
- The information in this Presentation that relates to Montepuez Mineral Resources and Ore Reserves is extracted from the ASX Announcements dated 18 October 2018 and 4 December 2018 respectively, both of which are available at Battery Minerals website in the ASX announcement page.
- See ASX announcements on the Balama Central Feasibility Study dated 12 December 2018 for details, Table 1 and Competent Person Statement
- Any references to Mineral Resource estimates on the Balama Central Project should be read in conjunction with the competent person statements included in the ASX announcements referenced in this report (See ASX announcement dated 29 March 2018 entitled "Resources double at Balama Central graphite project in Mozambique" for full details and Competent Persons Statement) as well as Battery Minerals' other periodic and continuous disclosure announcements lodged with the ASX, which are available on the Battery Minerals' website.
- The information in this presentation that relates to Battery Minerals' Balama Central Mineral Resources is a compilation of previously published data for which Competent Persons consents were obtained. Their consents remain in place for subsequent releases by Battery Minerals of the same information in the same form and context, until the consent is withdrawn or replaced by a subsequent report and accompanying consent.
- The information in this presentation that relates to Mineral Resources in the ASX announcement dated 29 March 2018 and entitled "Resources double at Balama Central Graphite Project in Mozambique" which is available at Battery Minerals Limited website www.batteryminerals.com.au in the ASX announcements page.
- This is not a disclosure document. Any material used in this presentation is a summary of selected data, and any investor in Legend Mining Limited should refer to all Battery Minerals Limited ASX releases and statutory reports before considering to invest in the company. Any forward-looking information in this presentation has been prepared on the basis of a number of assumptions that may prove not to be correct. Neither Battery Minerals Limited, nor its officers, employees and advisors make or give any representation, warranty or guarantee in relation to this presentation.
- Battery Minerals Limited reserves the right to update, amend or supplement the Information in this presentation at any time in its absolute discretion without incurring any obligation to do so.

- The information in this report that relates to Exploration Results from Battery Minerals' Stavelly-Stawell Copper Gold Project, Victoria and Russells Copper Project, Western Australia is based on information compiled by Mr Nicholas Jolly, a Member of the Australasian Institute of Mining and Metallurgy and a full-time employee of Battery Minerals Limited. Mr Jolly has sufficient experience that is relevant to the styles of mineralisation and types of deposit under consideration, and to the activity being undertaken, to qualify as a Competent Person as defined in the 2012 Edition of the "Australasian Code for Reporting of Exploration Results, Mineral Resources and Ore Reserves" (JORC Code). Mr Jolly consents to the inclusion in the report of the matters based on his information in the form and context in which it appears.
- Battery Minerals confirms that it is not aware of any new information or data that materially affects the information included in the original market announcements and that all material assumptions and technical parameters underpinning the estimates in the market announcements continue to apply and have not materially changed. Battery Minerals confirms that the form and context in which the Competent Person's findings are presented have not been materially modified from the original market announcements.
- Battery Minerals Limited released the results of a DFS on its Montepuez Project on 15 February 2017 & its Value Engineering Study (VES) results for Montepuez on 18 October 2017. These releases are available on Battery Minerals' website & ASX.
- Battery Minerals Limited released a vanadium mineral resource on 29 April, 2019. All material assumption underpinning this mineral resource continue to apply at the date of this release and have not materially changed.

Important Notice

- This ASX Announcement does not constitute an offer to acquire or sell or a solicitation of an offer to sell or purchase any securities in any jurisdiction. In particular, this ASX Announcement does not constitute an offer, solicitation or sale to any U.S. person or in the United States or any state or jurisdiction in which such an offer, tender offer, solicitation or sale would be unlawful. The securities referred to herein have not been and will not be registered under the United States Securities Act of 1933, as amended (the "Securities Act"), and neither such securities nor any interest or participation therein may not be offered, or sold, pledged or otherwise transferred, directly or indirectly, in the United States or to any U.S. person absent registration or an available exemption from, or a transaction not subject to, registration under the United States Securities Act of 1933.