



Traka Resources Limited

ABN: 63 103 323 173

15 October 2021

Company Announcements Office
ASX Limited
Level 4, 20 Bridge Street
SYDNEY NSW 2000

INVESTOR PRESENTATION

Attached is a copy of a presentation on the company's activities to be made to investors at the Resources Rising Start-Miningnews.net Investor Conference.

Authorised by the Board

Patrick Verbeek
Managing Director



The Mt Cattlin Gold-Copper Project

An advanced porphyry intrusive-related gold-copper project

Investor Presentation | Resources Rising Stars-Miningnews.net 2021 Conference,
14-15 October 2021 | Patrick Verbeek, Managing Director

ASX: TKL



Disclaimer



This presentation has been prepared by **Traka Resources Limited** ABN 63 103 323 173 (**Traka**) for the sole purpose of providing financial, operational and other information to enable recipients to review the business activities of Traka. This presentation is not intended as an offer, invitation, solicitation or recommendation with respect to the purchase or sale of any securities. Nothing in this presentation should be construed as financial product advice, whether personal or general, for the purposes of Section 766B of the *Corporations Act 2001*.

This presentation may contain forward looking information, statements or forecasts that are subject to risks and other factors outside the control of **Traka**. Any forward looking information, statements or forecasts provided is/are considered reasonable in the circumstances and has/have been prepared in good faith and with all due care, but may differ materially from actual future results and performance. **Traka** and its affiliates, any of its directors, agents, officers or employees do not make any representation or warranty, express or implied, as to or endorsement of the accuracy or completeness of any information, statements or forecasts contained in this presentation, and they do not accept any liability for any statements made in, or omitted from, this presentation.

This presentation should not be relied upon as a representation of any matter that an investor should consider in evaluating the business activities of **Traka**. Investors must make and rely upon their own enquiries and due diligence in relation to the subject of this presentation and an investment in **Traka**. A potential investor must assess the merits or otherwise of an investment in **Traka** having regard to their own personal, financial and other circumstances.

COMPLIANCE STATEMENT RELATING TO TRAKA'S PROJECTS

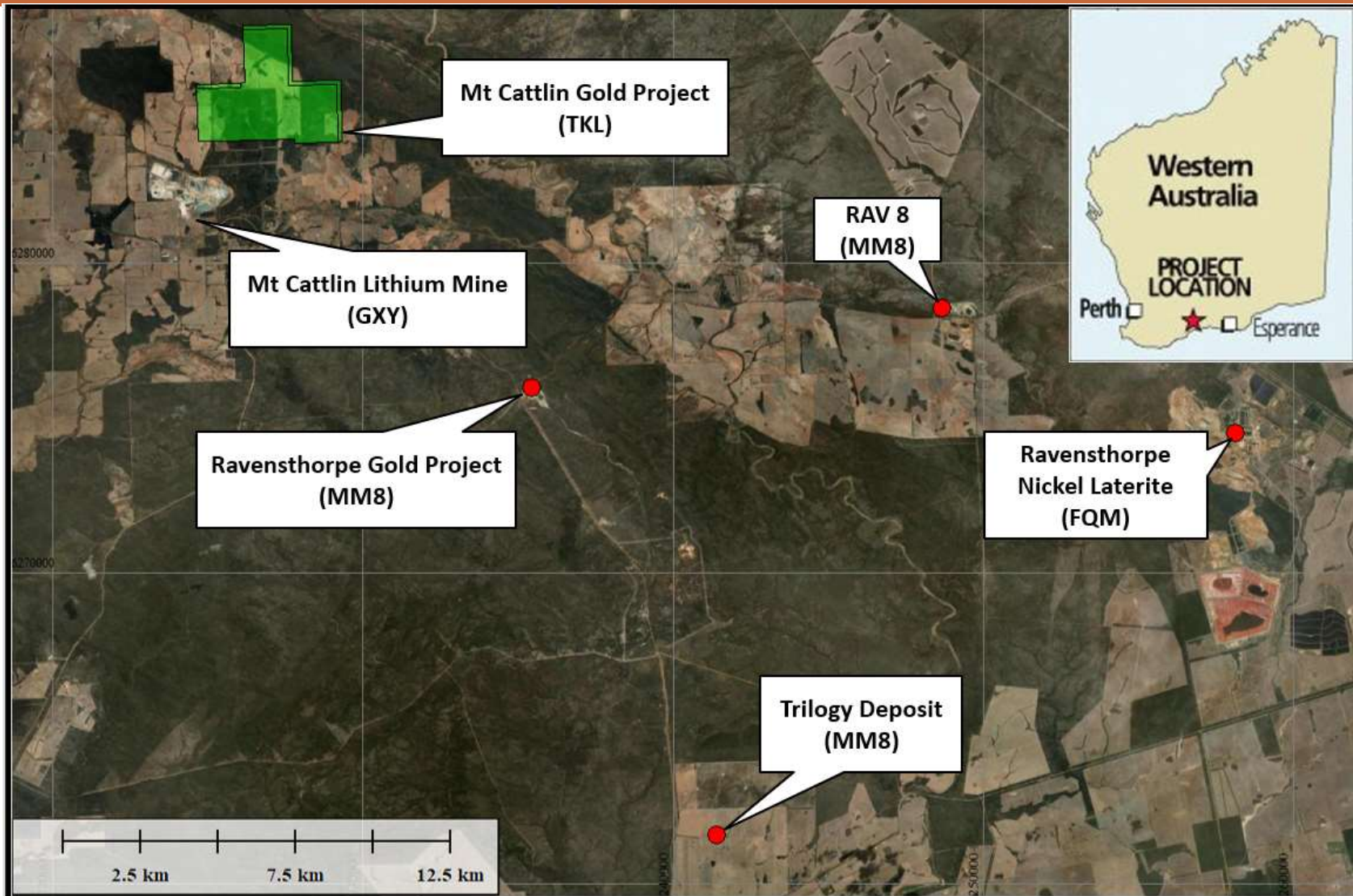
The information in this report that relates to Exploration Targets, Exploration Results, Mineral Resources or Ore Reserves is based on information compiled by Mr P Verbeek a Competent Person who is a Member of the Australasian Institute of Mining and Metallurgy and is engaged full time as the Managing Director of the Company. Mr Verbeek has sufficient experience that is relevant to the style of mineralisation and type of deposit under consideration and to the activity being undertaking to qualify as a Competent Person as defined in the 2012 Edition of the 'Australasian Code for Reporting of Exploration Results, Mineral Resources and Ore Reserves'. Mr Verbeek consents to the inclusion in the report of the matters based on his information in the form and context in which it appears.

Information included in the presentation is dated 14 October 2021



Traka Resources: Highly Leveraged to Exploration Success

High-impact exploration in a Tier-1 jurisdiction



- ✓ Mt Cattlin Gold-Copper Project in south-west WA
- ✓ Proven mining district
- ✓ Excellent existing infrastructure
- ✓ Immediately next to Mt Cattlin Lithium Mine (Galaxy)
- ✓ Galaxy retain the lithium-tantalum rights and Traka the gold and other metal rights
- ✓ 6,000 – 8,000m drilling program underway



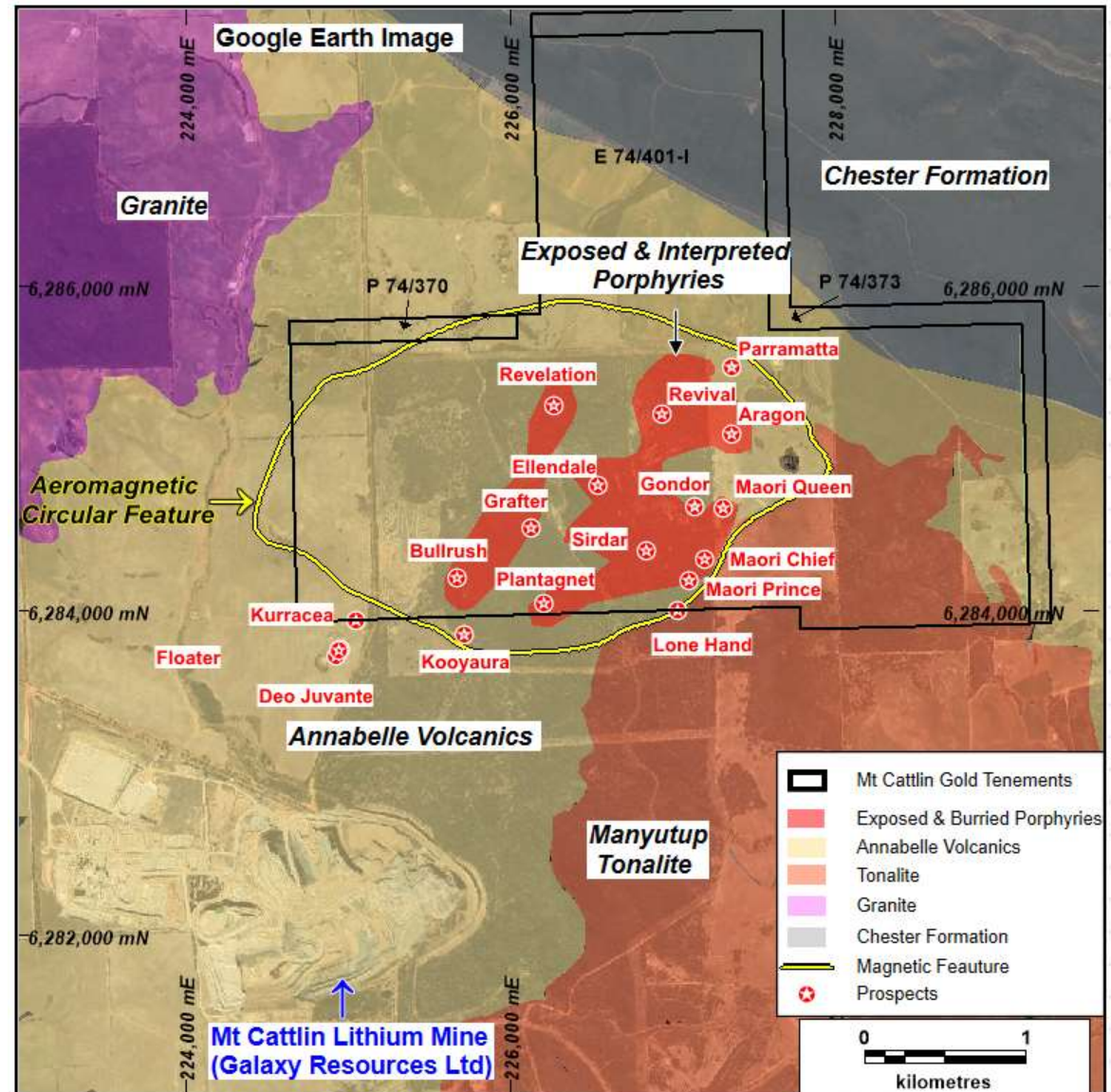
Mt Cattlin Gold-Copper Project

Advanced gold exploration opportunity on a newly-recognised porphyry intrusive-related system

- No exploration between 2004 and 2020
- Long history of gold mining – historical production:
23kt @ 24.56g/t Au from 18 separate mines
- Traka now 1 year into its exploration program
- Identified 3.5km circular porphyry intrusive complex central to tenements, hosting exploration targets and mines
- Maiden JORC 2012 Resource for Maori Queen and Sirdar on just two of a dozen targets:

Indicated and Inferred Mineral Resource of 165,094t at 3.94g/t Au for 22,940oz of gold in top 100m *

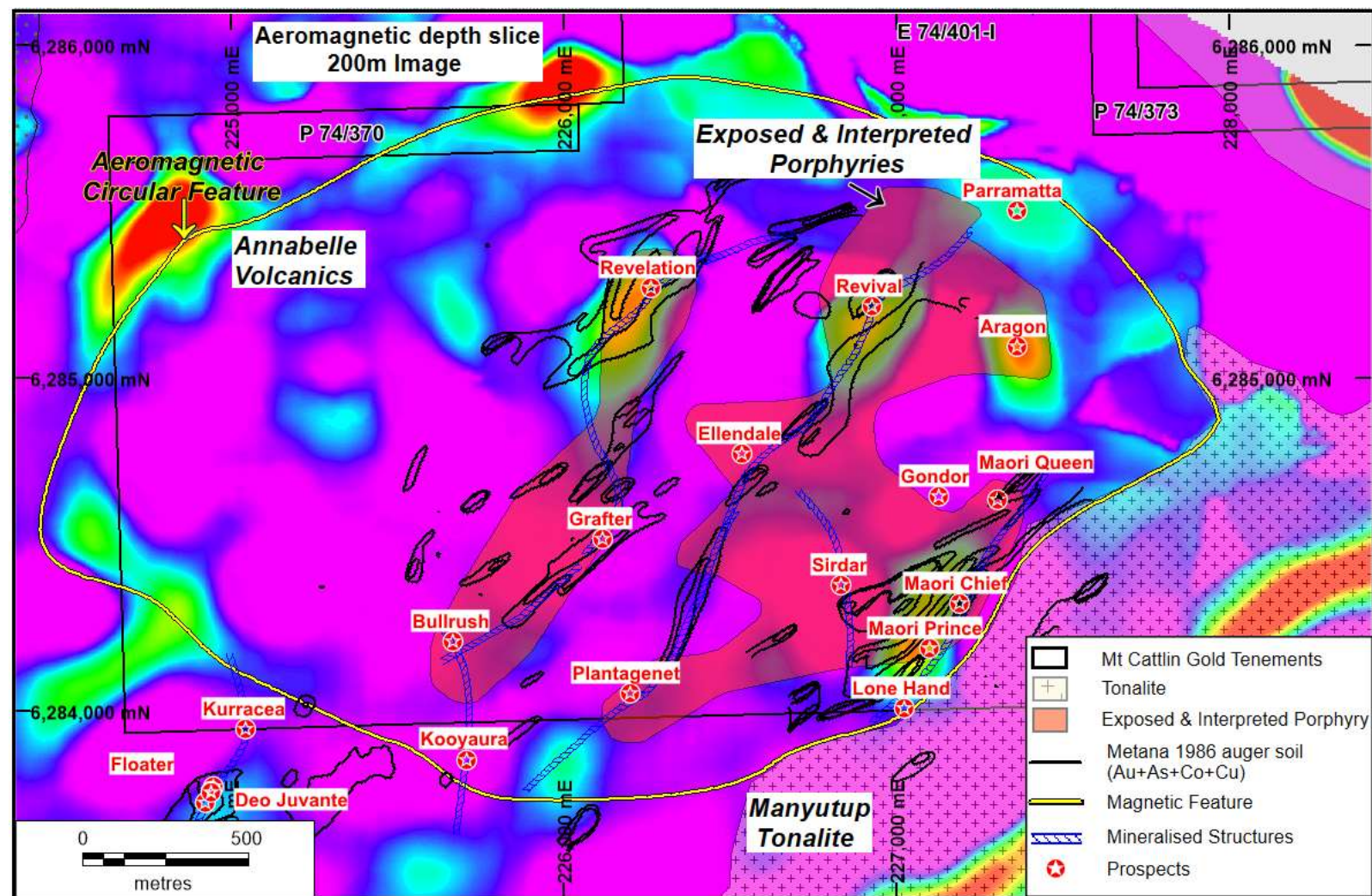
*** Traka ASX announcement 22 June 2021**



Mt Cattlin Gold Copper Project – a new chapter emerging?

Large-scale porphyry intrusive potential underlying the historic narrow high-grade gold workings

- Centrally-located porphyry intrusive complex
- Late stage north-east orientated structures passing through the intrusive complex
- Historic mining on these structures – gossan and soil geochemistry highlight these targets
- Aeromagnetic and IP highlight the intrusives



Maori Queen – historical mining

Turn of the century photo



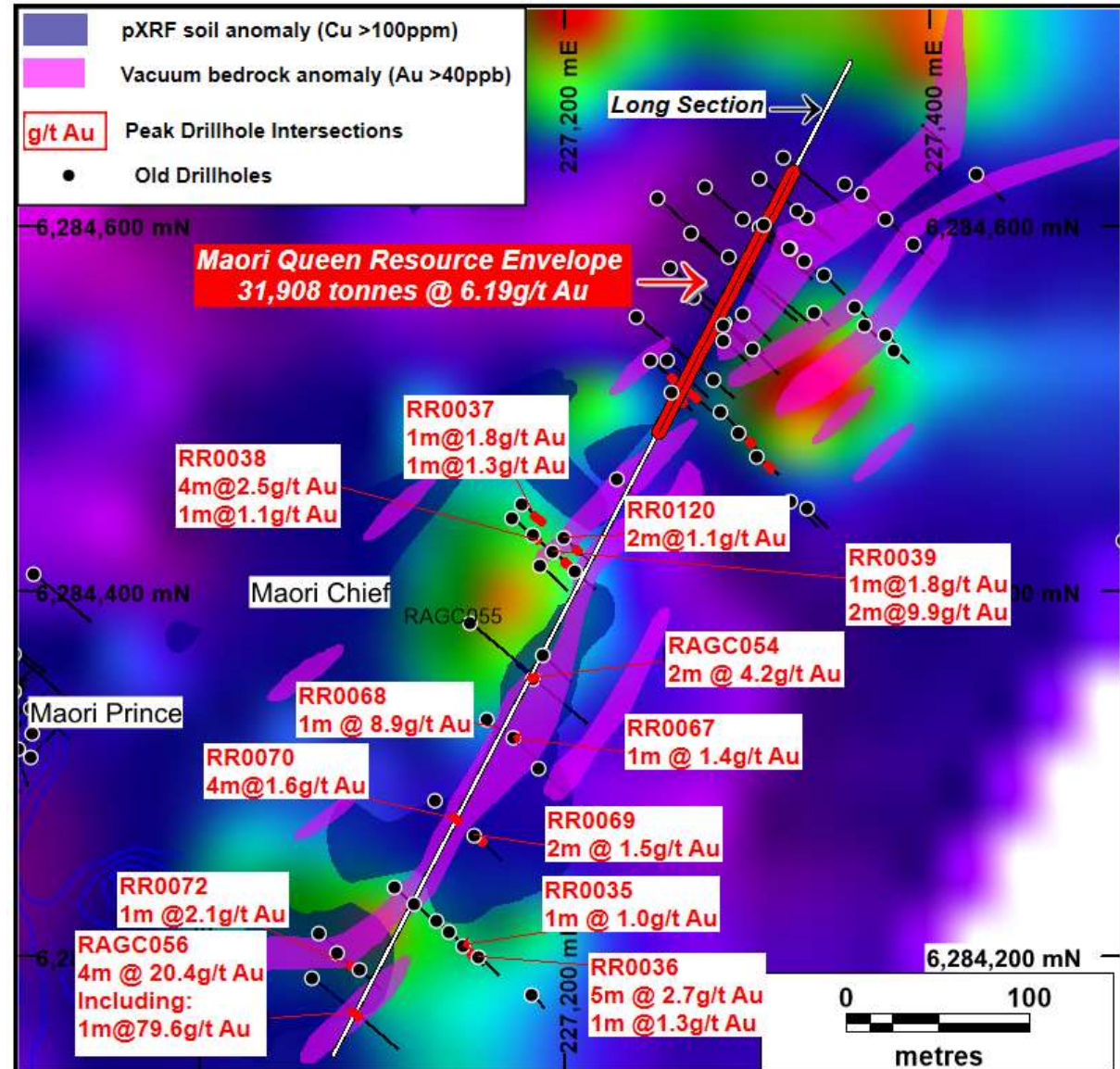
Maori Queen, Maori Chief and Maori Prince

Line of mineralisation offering strong potential to drill out significant Resources



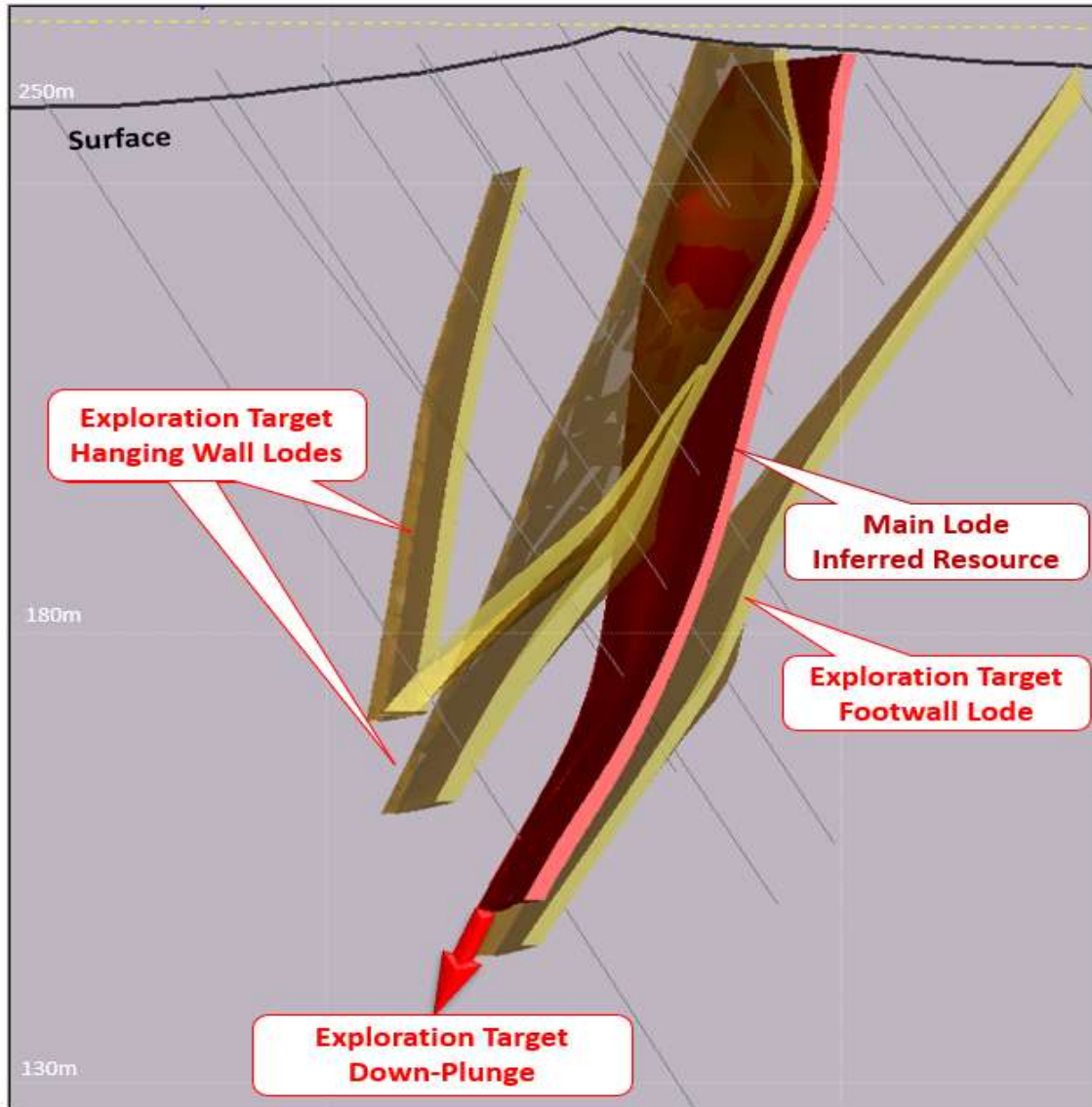
- Resistivity anomalies – vertical chimneys
- Recent scout RC drill program has confirmed mineralisation:
 - Maori Chief – **2m @ 4.2 g/t Au** ⁽²⁾
 - Maori Prince – **4m @ 20.4 g/t A, including 1m @ 79.6 g/t Au**
- Historical shallow RC drilling along the line of mineralisation indicates the presence of other footwall and hanging wall lodes
- Good scope to build a significant resource base along the “New Zealand” line of lode

(2) Traka ASX announcement 21 April 2021



Maori Queen – an example of narrow, high-grade mineralisation

Located on a late-stage structure, open in all directions, Exploration Target defined



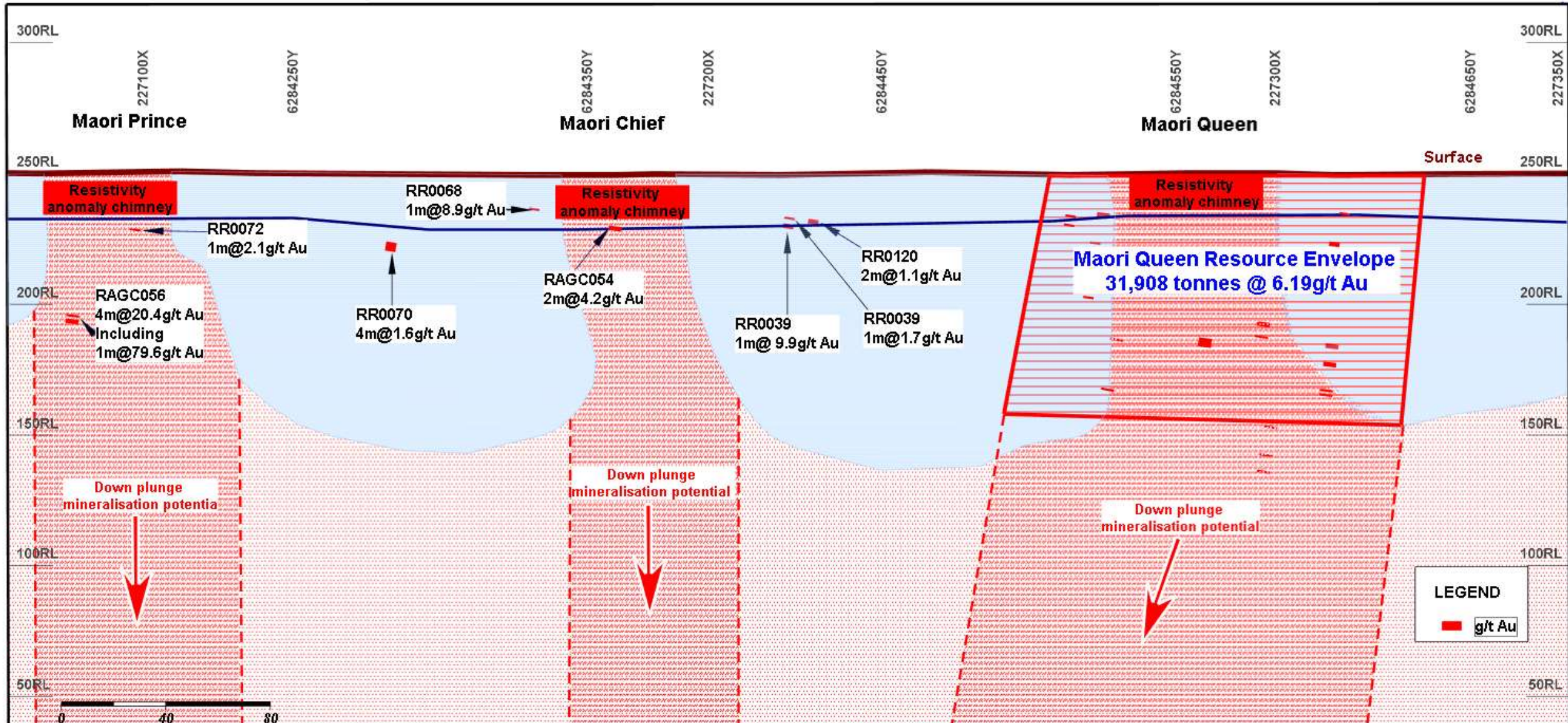
- Inferred Resource – **31,908 tonnes @ 6.19 g/t Au** down to 100m vertical depth ⁽¹⁾
- Exploration Target* extending below Main Lode over next 100m depth – 25,000 to 35,000 tonnes at grades ranging between 5.5g/t and 6.5g/t Au
- Exploration Target* – footwall and hanging-wall lodes to Main Lode to 100m of 130,000 to 150,000 tonnes ranging between 2 to 3 g/t Au

* The potential quantity and grade of Exploration Targets at Maori Queen is conceptual in nature. There has been insufficient exploration to estimate a Mineral Resource. It is uncertain if further exploration will result in the estimation of a Mineral Resource

(1) Traka ASX announcement 22 June 2021

Maori Queen on the New Zealand line

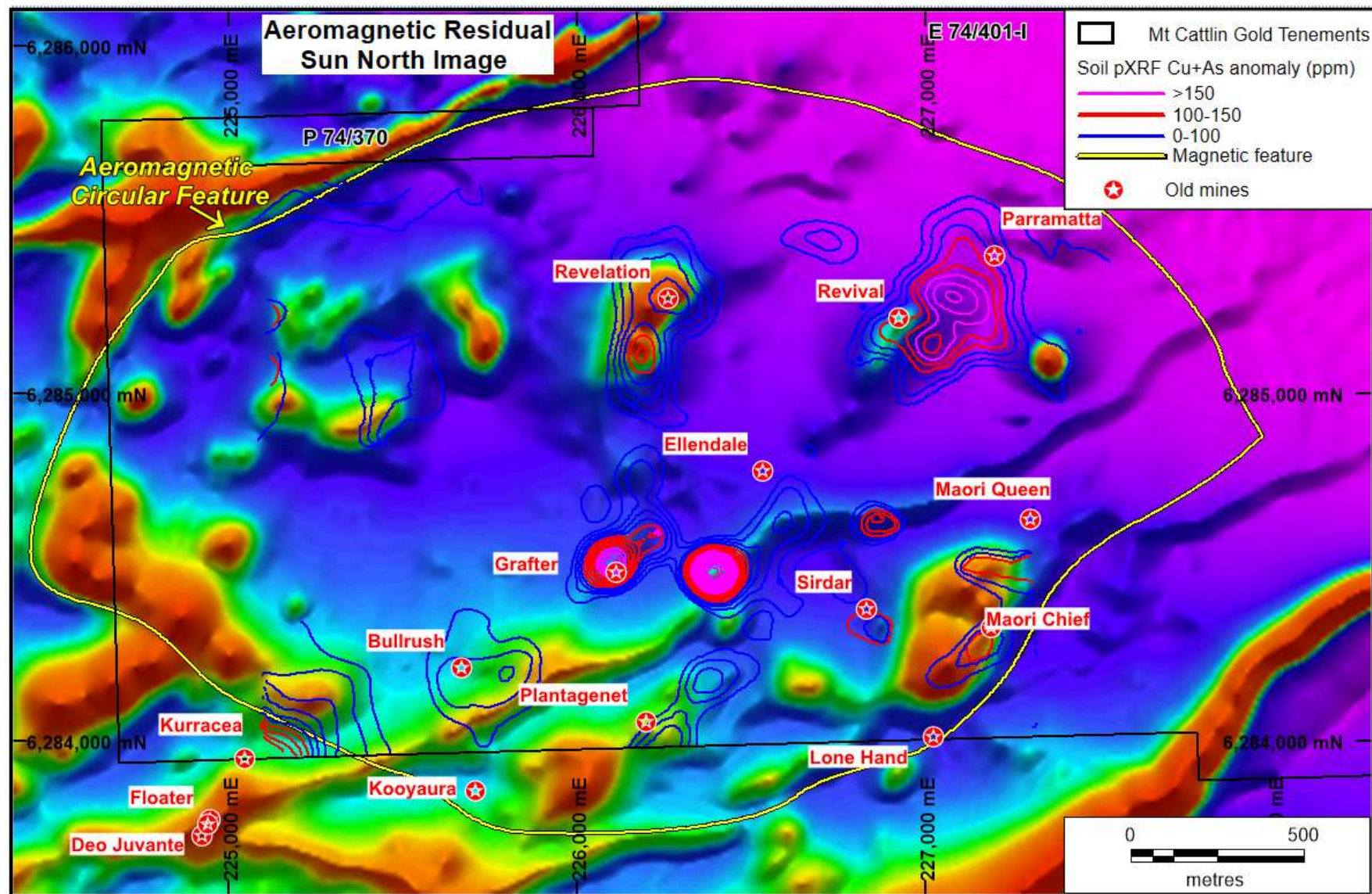
1km long shear zone with other similar high-grade lodes indicated by resistivity anomalies



Multiple high-quality intrusive-related targets

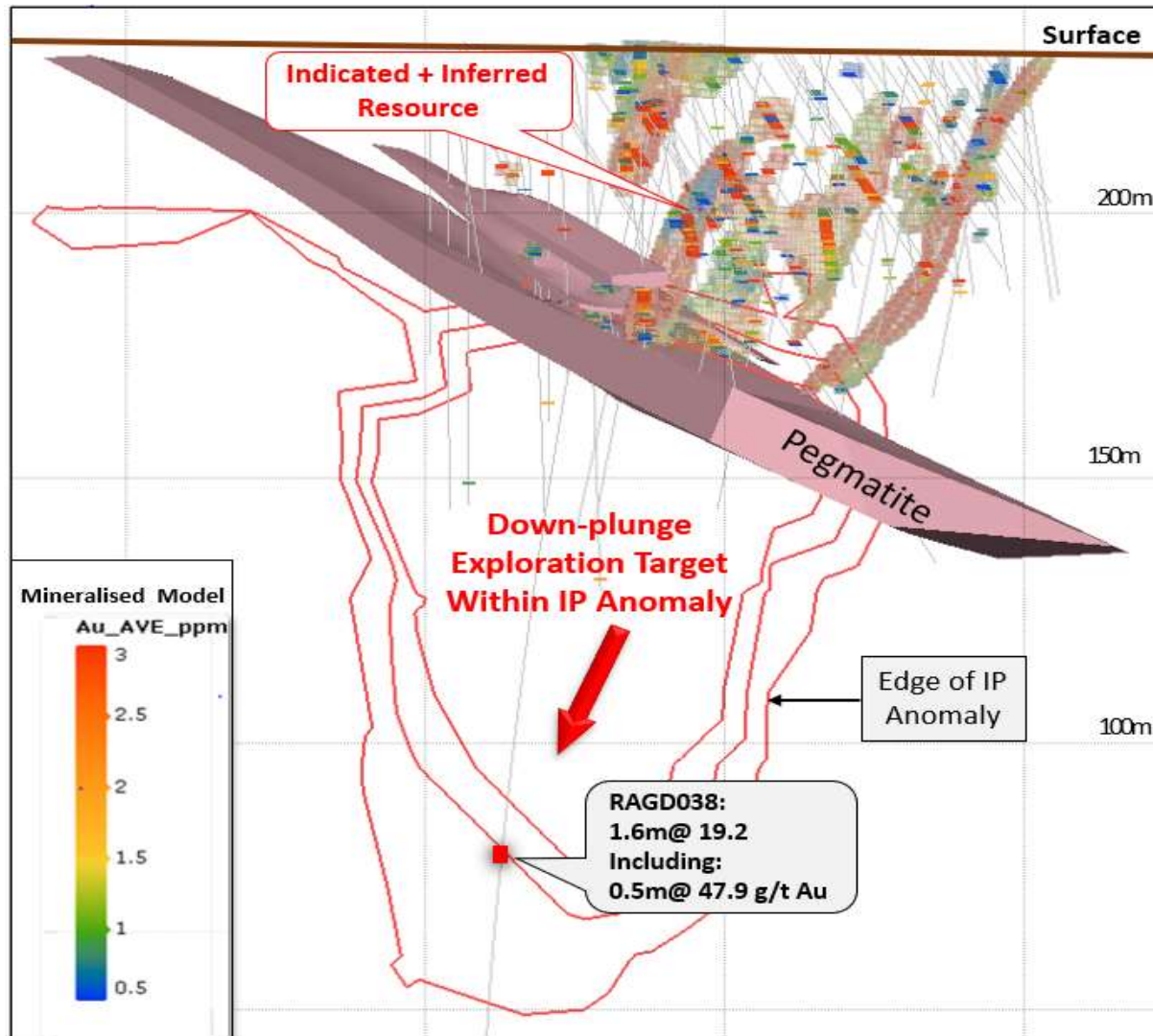
Strong pipeline of additional prospects

- Sirdar – an example of intrusive-related mineralisation
- Dolerite-hosted versus porphyry?
- Distinct coincident IP and soil geochem anomaly but no aeromagnetic signature?
- High-grade shoots plunging to the north-east



Sirdar – Maiden Mineral Resource

Strong potential for open pit and underground mining



- Indicated and Inferred Resource to 100m depth of **133,186 tonnes @ 3.40 g/t Au**
- Exploration Target* extending a further 100m depth below Mineral Resource of 120,000 to 160,000 tonnes at a grade of 2.5 – 3.5g/t Au
- Diamond hole RAGD038, drilled 200m under the Resource envelope:
 - **1.6m @ 19.2g/t Au, incl. 0.5m @ 47.9g/t Au**
- Intercept on the edge of a large IP anomaly – follow-up drilling planned

* The potential quantity and grade of Exploration Targets at Maori Queen is conceptual in nature. There has been insufficient exploration to estimate a Mineral Resource. It is uncertain if further exploration will result in the estimation of a Mineral Resource

Porphyry Host Rocks

Porphyry rock samples and copper-gold gossan



Feldspar phenocryst
in fine grained mafic



Quartz phenocryst in
felsic matrix



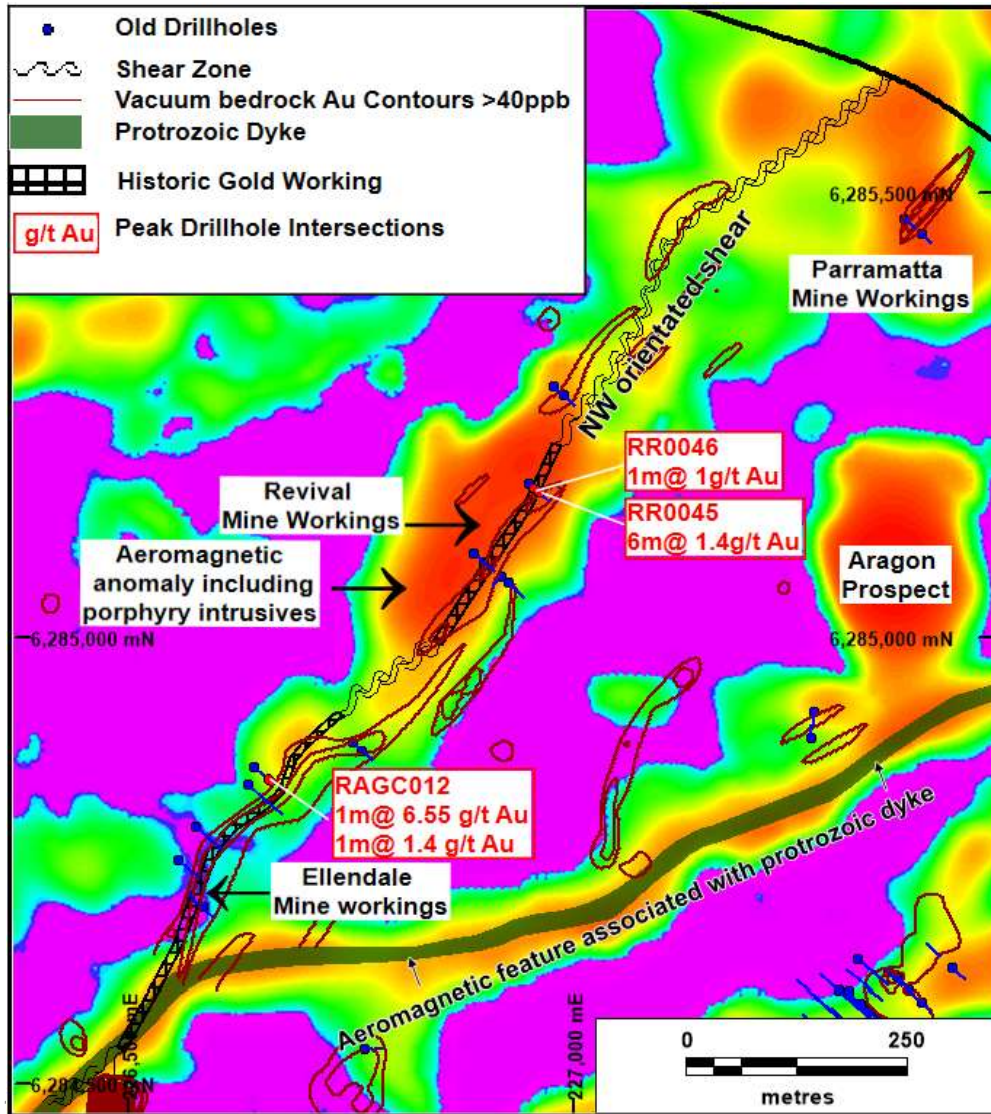
Malachite (Cu)
mineralisation
within magnetite
alteration



Malachite and
azurite (Cu)
mineralisation
within magnetite
alteration

Examples of Porphyry Intrusive targets

500m long coincident aeromagnetic and soil geochemical anomaly

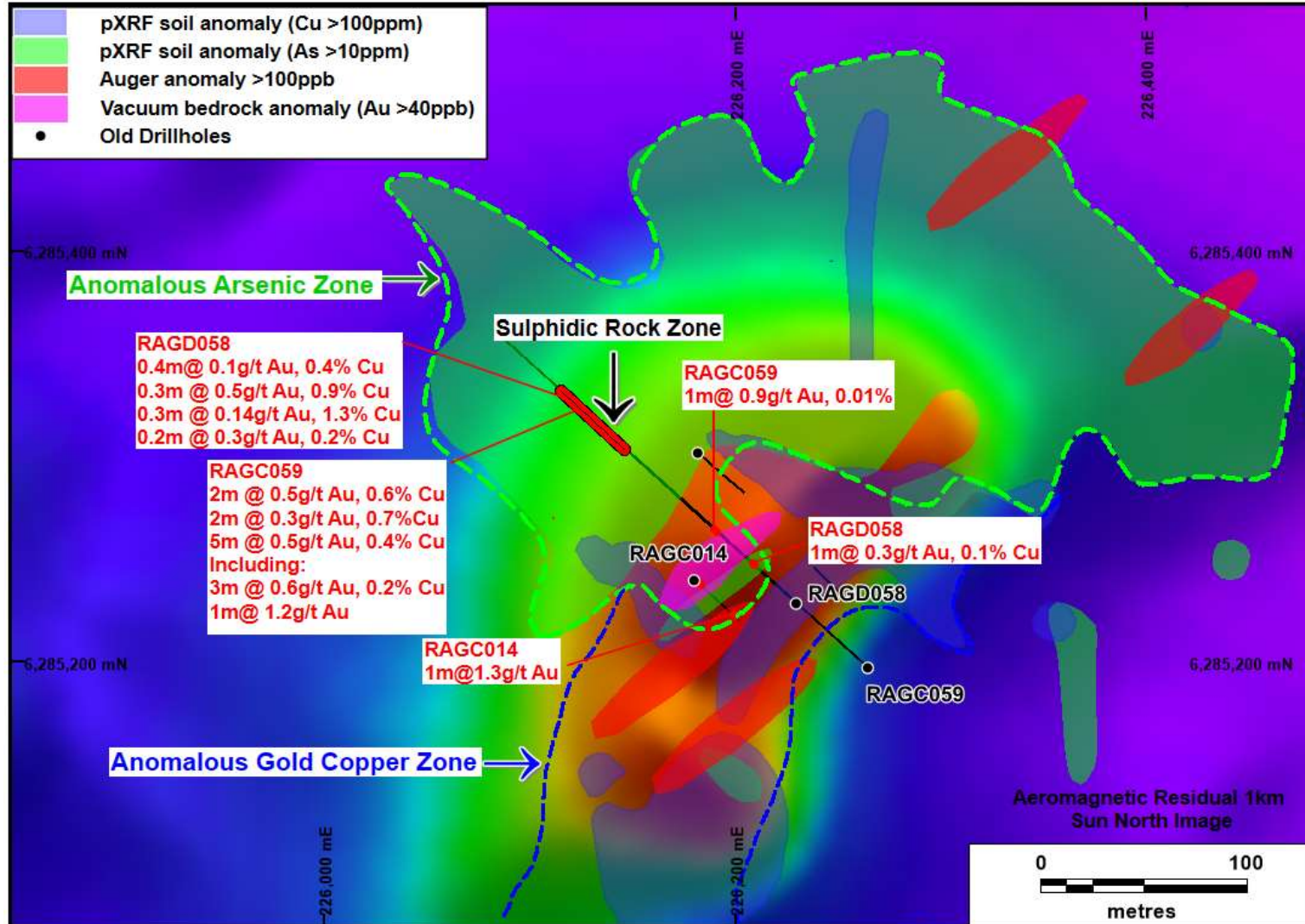


- Old mine extending over 400m along north-east striking shear zone
- Single drill hole by Traka 2003 RAGC012 on margins of porphyry intrusive (3)
 - 1 metre @ 6.55 g/t Au
 - 1 metre @ 1.40 g/t Au
- A few old drill holes shallow and ineffective

(3) Traka ASX announcement 23 July 2020

Revelation Target

500m long coincident aeromagnetic and soil geochemical anomaly

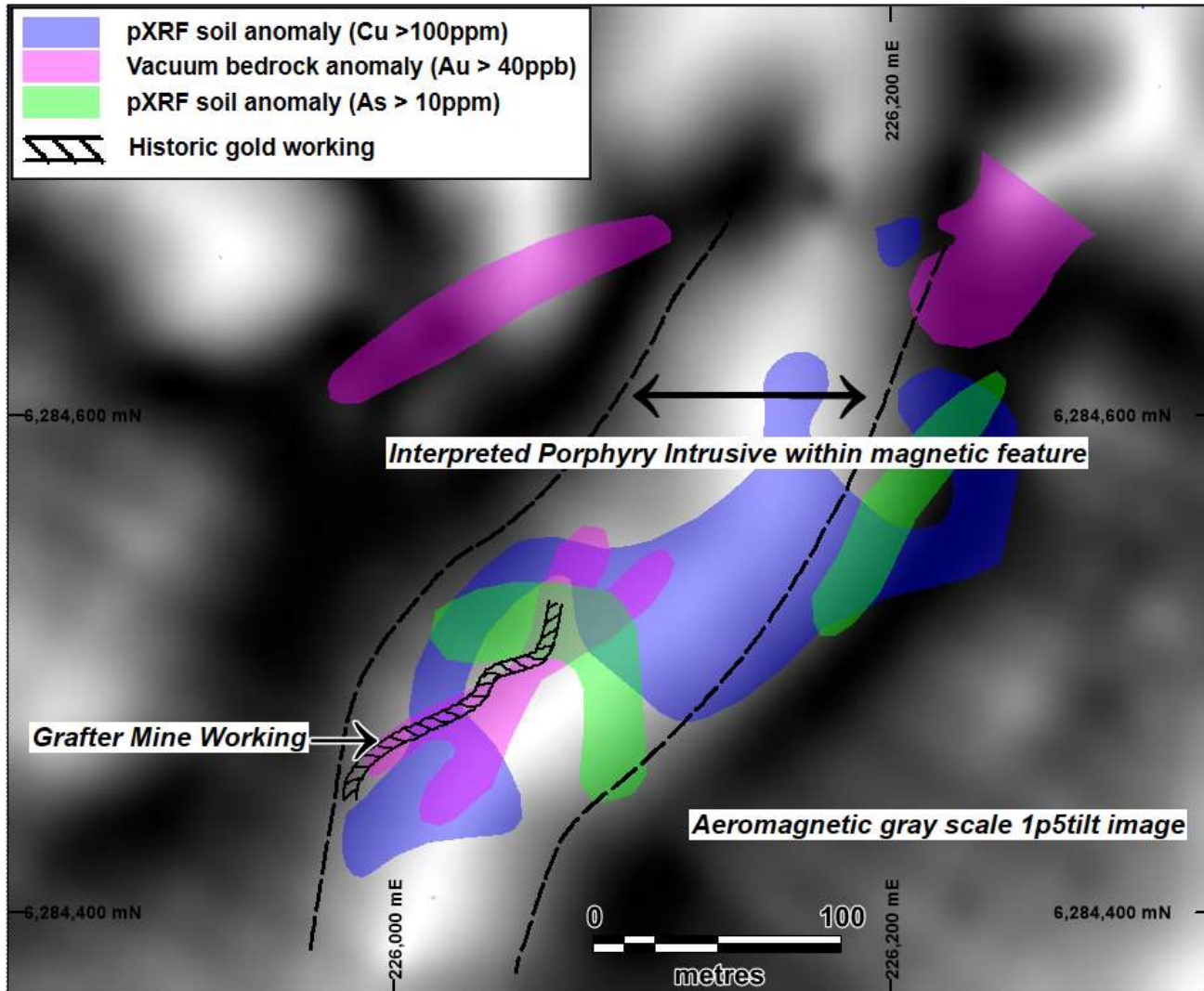


Revelation

- Coincident aeromagnetic and soil geochemical anomaly
- Skarn host rock on the margins of mafic and porphyry intrusive
- Skarns characteristic of porphyry gold copper deposits
- Open in all directions

Grafter Mine Porphyry Target

500m long coincident aeromagnetic and soil geochemical anomaly



- No drilling ever
- 500m long north-east trending aeromagnetic anomaly with coincident gold and copper soil geochemical anomaly



Summary: High-grade gold, with emerging porphyry potential

High-impact exploration programs underway



- ✓ Gold-copper endowment with numerous targets identified
- ✓ Round 2 drilling program underway
- ✓ Exploring in a Tier-1 mineral belt with good logistics
- ✓ High-leverage investment opportunity





Thank you.

Patrick Verbeek,
Managing Director

ASX: TKL

