

# Kingman Project

## High-grade Gold & Silver in Arizona



**RIEDEL**  
RESOURCES



October 2021 | ASX: RIE



# DISCLAIMER



## Cautionary Statements, Disclaimers & Forward Looking Statements

This presentation (**Presentation**) has been prepared by Riedel Resources Limited (**Riedel or the Company**) based on information available to it from its own and third party sources and is not a disclosure document. By retaining this Presentation, you (the **Recipient**) acknowledge and represent to Riedel that you have read, understood and accepted the terms of this disclaimer. This presentation contains summary information and does not purport to be complete.

This Presentation does not purport to contain all the information that a prospective investor may require in connection with any potential investment in Riedel or its underlying business. Each Recipient must make its own independent assessment of before acquiring any shares in Riedel. **You should not treat the contents of this Presentation, or any information provided** in connection with it, as financial advice, financial product advice or advice relating to legal, taxation or investment matters. Before acquiring any Shares, you should consult your own advisers and conduct your own investigation and analysis in relation to Riedel. The presentation does not comprise a prospectus, product disclosure statement or other offering document under Australian law (& will not be lodged with ASIC) or any other law.

Riedel does not accept responsibility or liability for any loss or damage suffered or incurred by you or any other person or entity however caused (including, without limitation, negligence) relating in any way to this Presentation including, without limitation, the information contained in or provided in connection with it, any errors or omissions from it however caused (including without limitation, where caused by third parties), lack of accuracy, completeness, currency or reliability or you, or any other person or entity, placing any reliance on this Presentation, its accuracy, completeness, currency or reliability. Riedel does not accept any responsibility to inform you of any matter arising or coming to Riedel's notice after the date of this Presentation which may affect any matter referred to in this Presentation. Any liability of Riedel, its advisers, agents and employees to you or to any other person or entity arising out of this Presentation including pursuant to the Australian Securities and Investments Commission Act 2001, Corporations Act 2001, or any corresponding provision of any state or territory legislation, or similar provision under any applicable law is, to the maximum extent permitted by law, expressly disclaimed and excluded.

The distribution of this Presentation may be restricted by law in certain jurisdictions. Recipients and any other persons who come into possession of this Presentation must inform themselves about such restrictions and observe any such restrictions.

This Presentation contains reference to certain intentions, expectations, future plans, strategy and prospects of Riedel. Those intentions, expectations, future plans, strategy and prospects may or may not be achieved. They are based on certain assumptions, which may not be met or on which views may differ and may be affected by known and unknown risks. The performance and operations of Riedel may be influenced by a number of factors, many of which are outside the control of Riedel. No representation or warranty, express or implied, is made by Riedel or any of its directors, officers, employees, advisers or agents that any intentions, expectations or plans will be achieved either totally or partially or that any particular rate of return will be achieved.

Given the risks and uncertainties that may cause Riedel's actual future results, performance or achievements to be materially different from those expected, planned or intended, Recipients should not place undue reliance on these intentions, expectations, future plans, strategy and prospects. Riedel does not warrant or represent that the actual results, performance or achievements will be as expected, planned or intended.

This Presentation may contain certain "forward-looking statements" which may not have been based solely on historical facts, but rather may be based on the Company's current expectations about future events and results. Where the Company expresses or implies an expectation or belief as to future events or results, such expectation or belief is expressed in good faith and believed to have a reasonable basis. However, forward looking statements are subject to risks, uncertainties, assumptions and other factors, which could cause actual results to differ materially from future results expressed, projected or implied by such forward-looking statements. Such risks include, but are not limited to metals price volatility, currency fluctuations, increased production costs and variances in ore grade or recovery rates from those assumed in mining plans, as well as political and operational risks, and governmental regulation and judicial outcomes. Forward looking statements/projections are inherently uncertain and may therefore differ materially from results ultimately achieved. Riedel does not make any representations and provides no warranties concerning the accuracy of the projections. The Company does not undertake any obligation to release any revisions to any "forward-looking statement" to reflect events or circumstances after the date of this presentation, or to reflect the occurrence of unanticipated events, except as may be required under applicable securities laws.



# KINGMAN PROJECT

## A PROVEN AND HISTORIC MINING CENTRE



- Project located near Kingman, Arizona
- Only 140 km's from Las Vegas
- Numerous historic mines & little modern exploration
- Mined from 1880's to 1940's (coinciding with the onset of WW2)
- Diamond drilling in 2019 & RC drilling in 2021 intersected multiple, shallow, high-grade gold and silver intercepts across the project area
- Numerous high grade intersections at the Tintic Mine area





# THE SUMMER OF 1937...

LOOKING FOR GOLD IN THE SHADOW OF THE HEADFRAME!



SUMMER OF 1937 ARIZONA MAGMA MINE TWO MILES WEST OF CHLORIDE ARIZONA





# KINGMAN PROJECT – ARIZONA



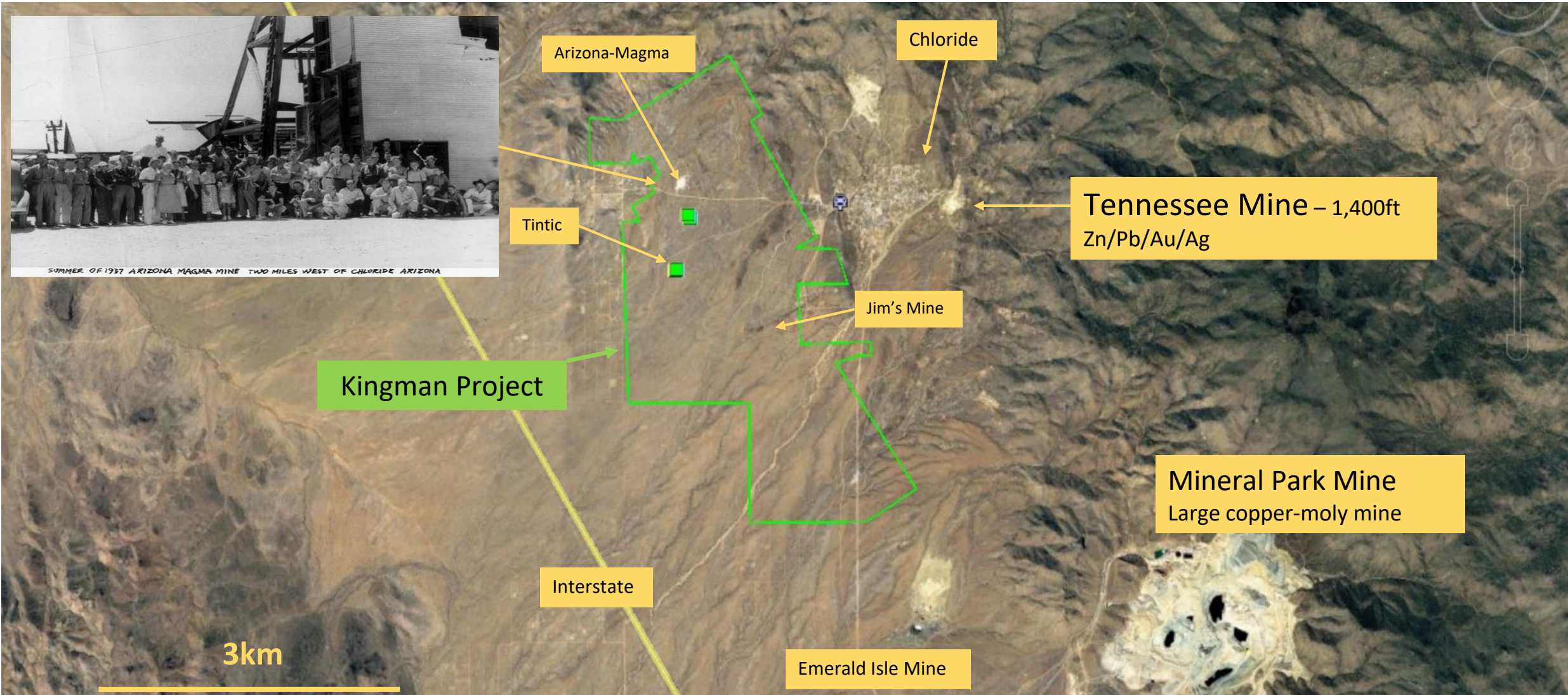
c. 1937



2019



# LARGE AREA - NUMEROUS HISTORIC MINES



# TINTIC - THE STANDOUT

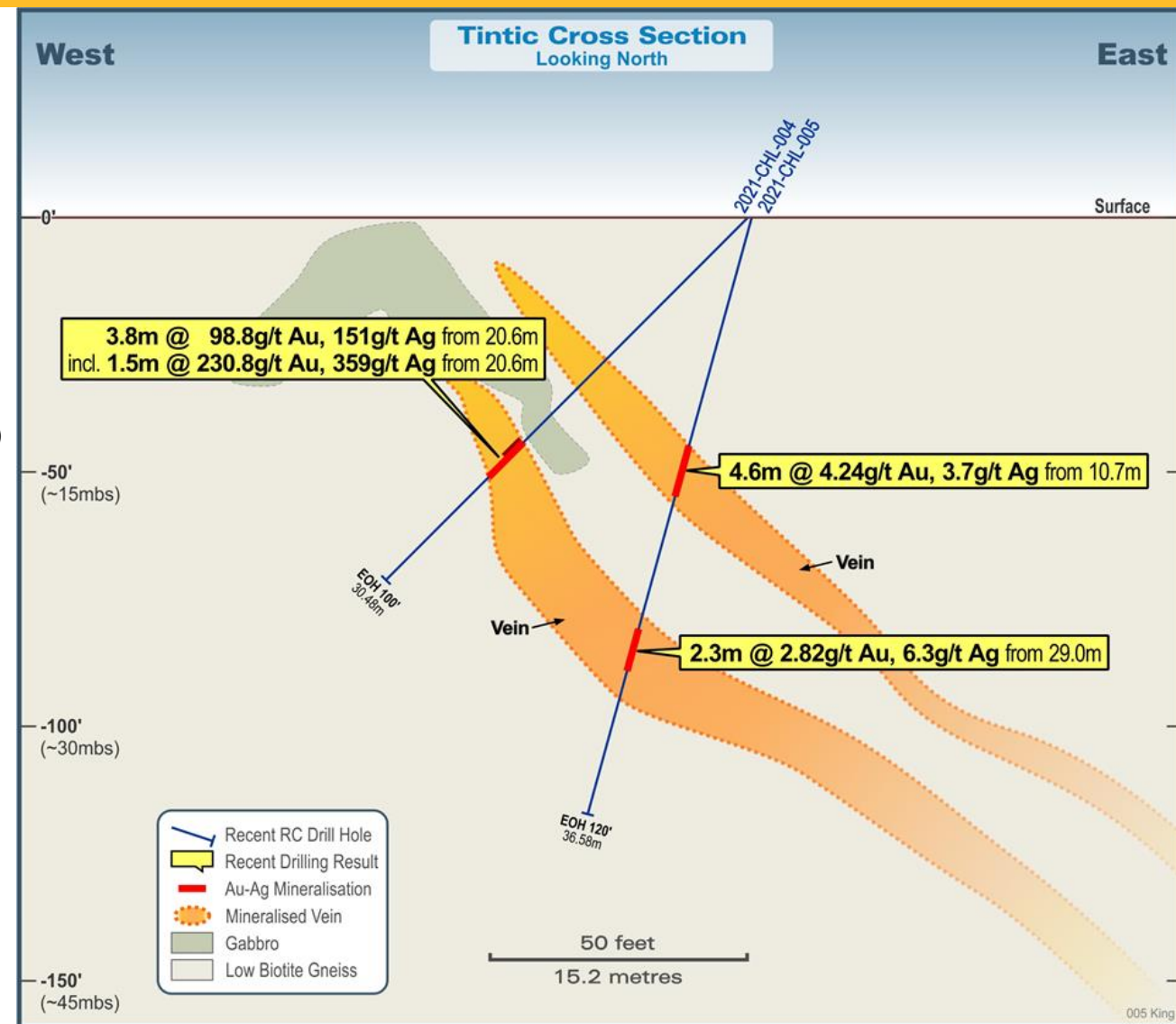
## HIGH-GRADE GOLD INTERCEPTS IN 1H2021 DRILLING



Results include (ref ASX announcement 23 March 2021):

- **3.8m @ 98.8 g/t gold & 151 g/t silver** from 20.6m incl.
- **1.5m @ 230.8 g/t gold & 359 g/t silver** from 20.6m; (hole CHL-004)
- **1.5m @ 15.56 g/t gold & 29.3 g/t silver** from 28.2m (2021-CHL-002)
- **4.6m @ 4.44 g/t gold & 7.8 g/t silver** from 18.3m (2021-CHL-003)
- **4.6m @ 4.24 g/t gold** from 10.7m (2021-CHL-005)
- **1.5m @ 11.46 g/t gold & 35 g/t silver** from 20.6m (2021-CHL-009)
- **1.5m @ 571 g/t silver** from 33.5m (2021-CHL-010)
- **1.5m @ 39.3 g/t gold & 323 g/t silver** from 37.3m (2021-CHL-011)

Refer ASX Announcement 23 March 2021





# TINTIC – SCRATCHING THE SURFACE!

## RC Drilling in early 2021:

**3.8m @ 98.8 g/t gold & 151 g/t silver from 20.6m inc 1.5m @ 230.8 g/t gold and 359 g/t silver from 20.6m; (hole CHL-004)**

**1.5m @ 15.56 g/t gold & 29.3 g/t silver from 28.2m (2021-CHL-002)**

**4.6m @ 4.44 g/t gold & 7.8 g/t silver from 18.3m (2021-CHL-003)**

**4.6m @ 4.24 g/t gold from 10.7m (2021-CHL-005 @ Tintic)**

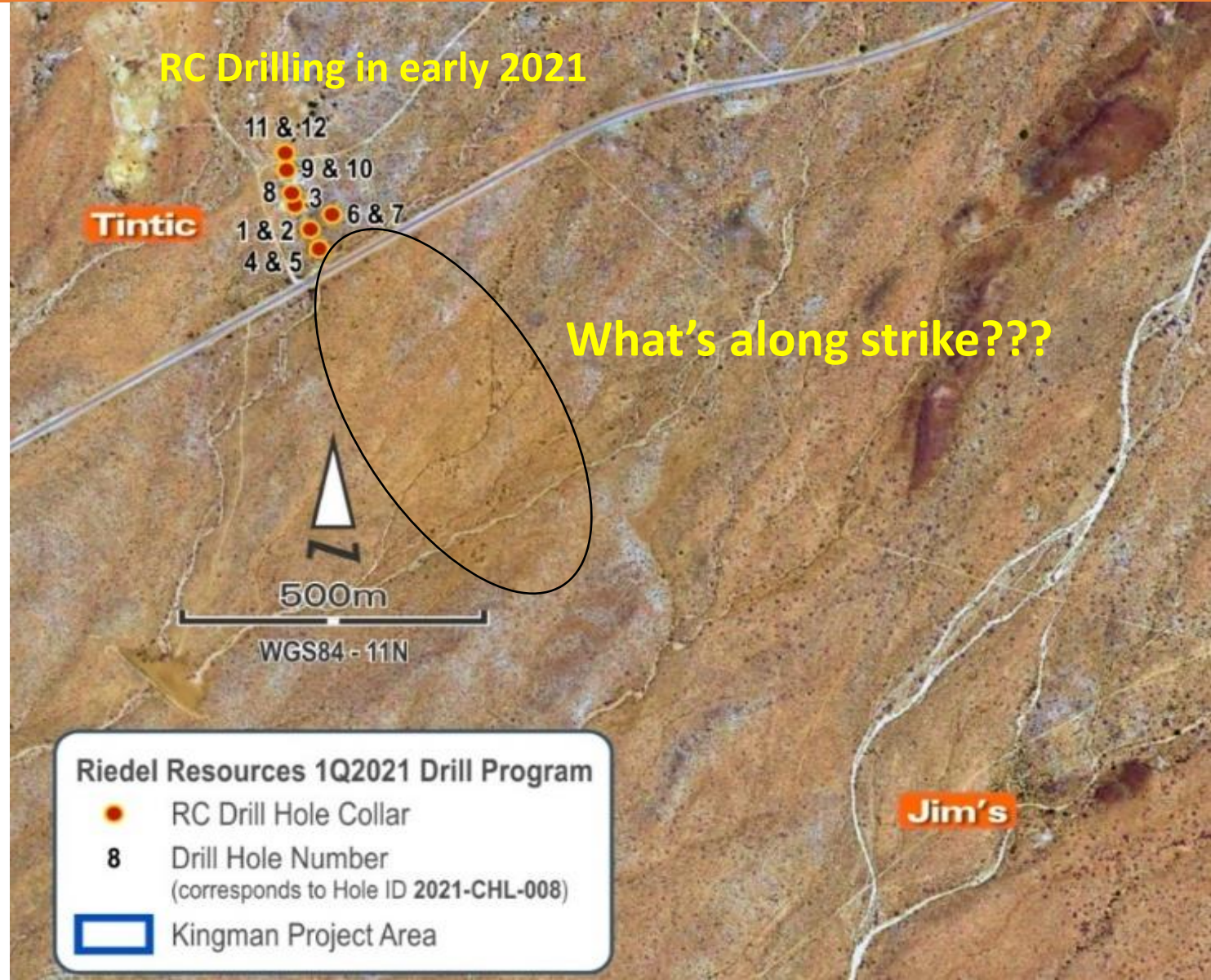
**1.5m @ 11.46 g/t gold & 35 g/t silver from 20.6m (2021-CHL-009)**

**1.5m @ 571 g/t silver from 33.5m (2021-CHL-010)**

**1.5m @ 39.3 g/t gold & 323 g/t silver from 37.3m (2021-CHL-011)**

***Southern-most hole (hole 4) drilled in March has the highest grade – 3.8m at 98.8 g/t gold***

***What's along strike?***

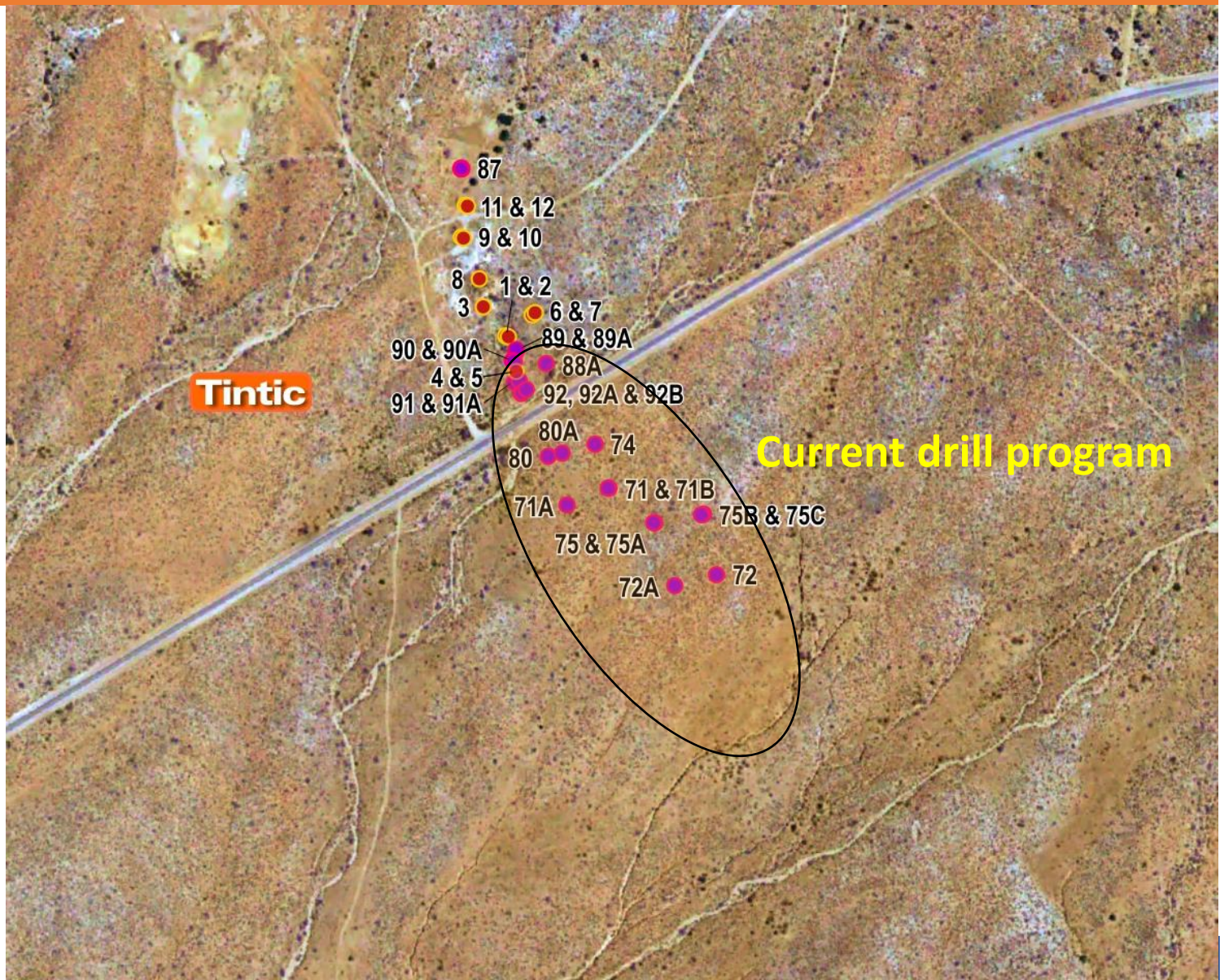






# TINTIC - CURRENT RC DRILL PROGRAM

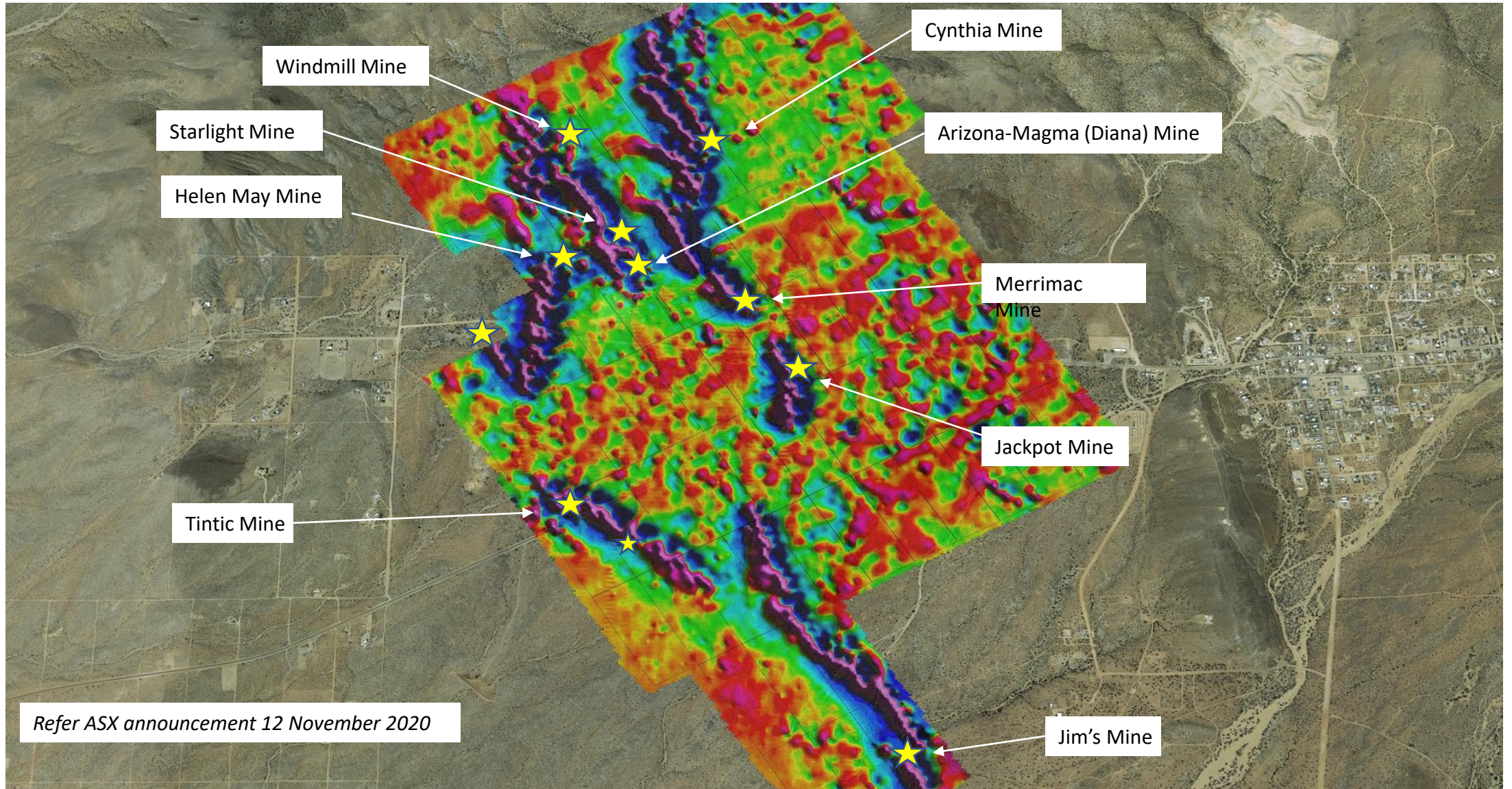
- Testing the Tintic strike extent
- Targeting area to south of previous high grade results
- Holes drilled over 500m strike
- 23 holes at Tintic so far this program (as at 11 October)
- Drilling continues this month
- First assay results mid/late-November (subject to laboratory turn-around)





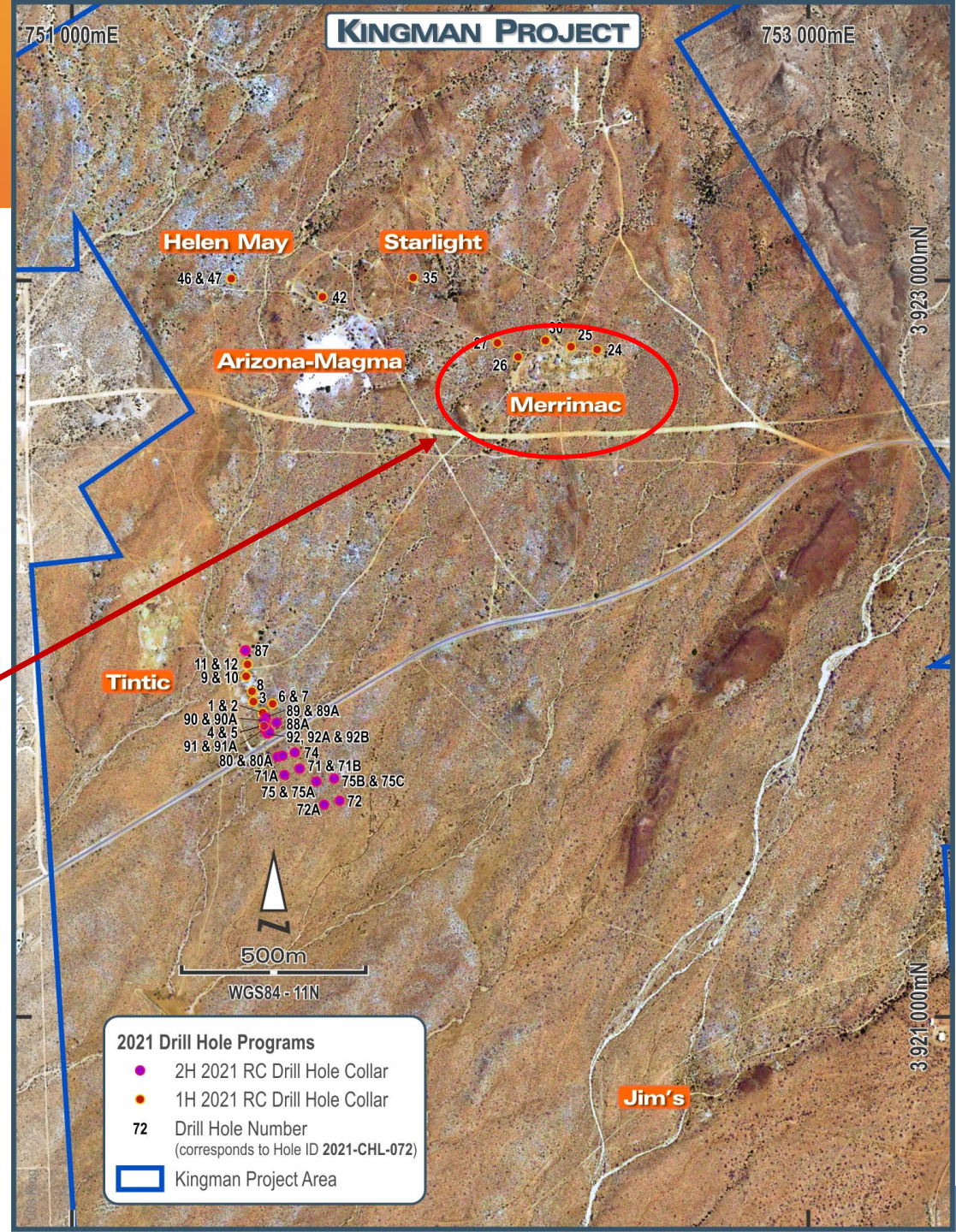
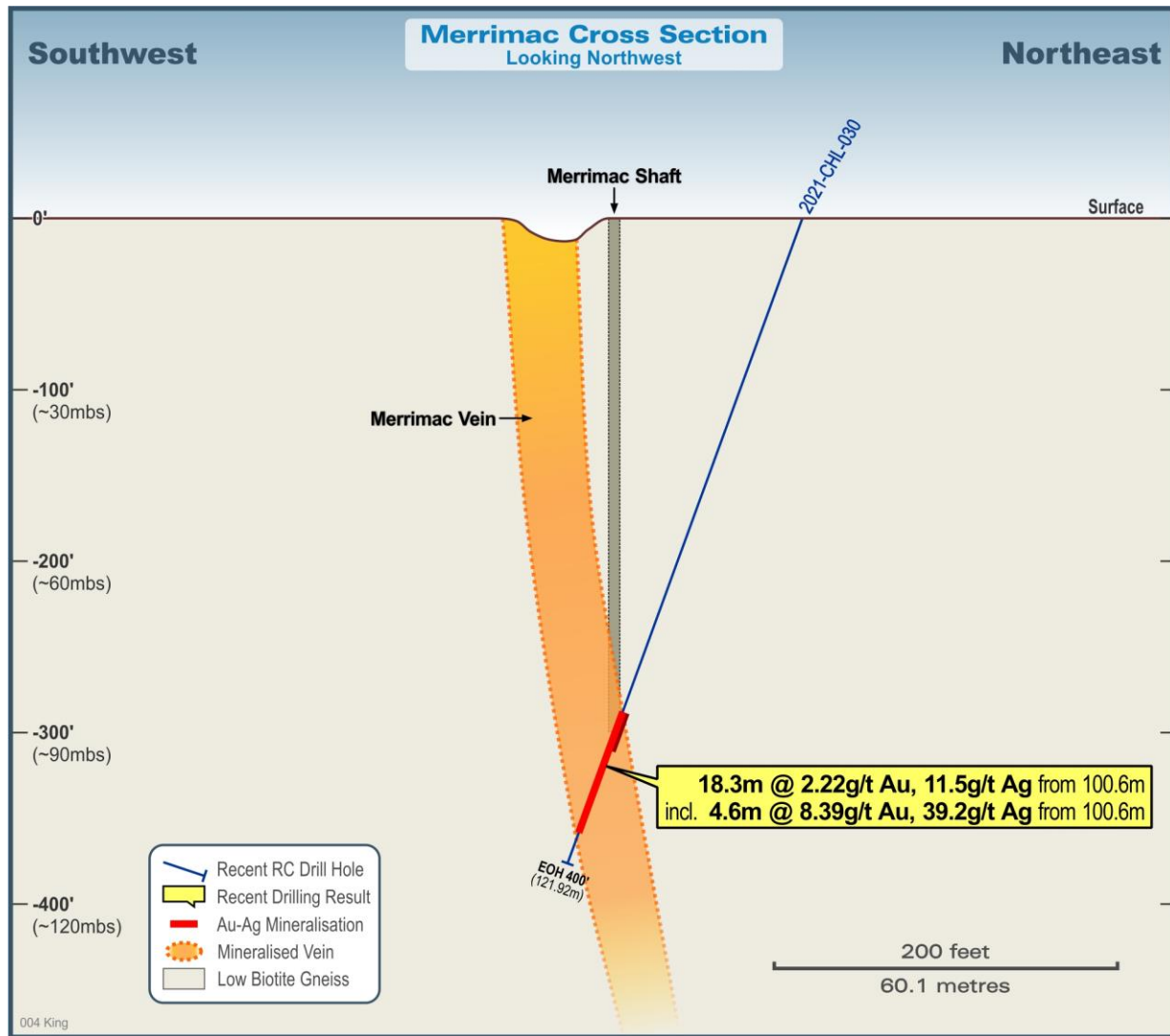
# GEOPHYSICS APPEARS TO WORK

NOTE THE CORRELATION WITH HISTORIC MINES





BUT IT'S NOT JUST TINTIC...





# ROCK-CHIPS

High-grade rock-chips:

- High gold & silver grades
- Sampled in new areas to the southern part of our Project area
- Exciting new area with almost no exploration undertaken
- Follow up in 2022
- Area never drilled!





# FIRST-CLASS LOCATION

- 30 km's from Kingman (pop. ~30,000)
- 90 minutes drive from downtown Las Vegas
- 3 km's from Interstate Highway
- Sealed road/powerline runs through property
- Large local workforce all within 30 minutes drive
- Permitted Gold Mines operating in the region
- Year-round access



*Kingman Office*





Jim's Mine (fenced since this photo taken)



Gold room (ruins) at Arizona-Magma (Diana) Mine



Shaft, ore bin, plant site & tailings at Arizona-Magma (Diana) Mine



Merrimac Mine Shaft



# SUMMARY

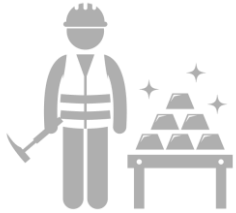
- High gold and silver grades in drilling
- Shallow depths
- Open down dip and along strike to south
- +500m of strike potential being tested at Tintic
- ‘Target Rich’ environment - multiple targets with high grade veins and rock-chips
- Track record of delivery – drilling on time & on budget by experienced local team
- Tier-1 jurisdiction with large land position
- Currently drilling with first results next month



*RC Drilling – October 2021*



# INVESTMENT HIGHLIGHTS



Exciting Gold-Silver project with high grades confirmed by drilling



Multiple high-grade veins open along strike and at depth



Large strategic landholding with year-round access in Tier-1 jurisdiction



Almost no exploration under cover – many areas NEVER tested



Riedel can earn up to 80% interest



Permitting track record



US-based team who oversaw the successful 2019 & 2021 drilling programs



Ability to quickly build on early success





**RIEDEL**  
RESOURCES



#### Board:

- Michael Bohm – Chairman
- Grant Mooney
- Scott Cuomo
- Jason Pater

#### Capital Structure:

- 966,707,062 shares
- 150,000,000 options @ \$0.0125 expiry 14.12.23
- 10,000,000 options @ \$0.11 expiry 23.11.21

#### Contact:

Michael Bohm  
mbohm@iinet.net.au

Street - 4/6 Richardson Street West Perth Western Australia 6005 Australia

Postal - PO Box 1559 West Perth WA 6005 Australia

Phone: +61 8 9226 0866

admin@riedelresources.com.au

[www.riedelresources.com.au](http://www.riedelresources.com.au)