

FIELDWORK IDENTIFIES ADDITIONAL PEGMATITES AT RED PANDA LITHIUM PROJECT WA

Highlights

- Numerous pegmatite targets identified across the Wildplay JV
- Fieldwork confirms outcropping pegmatites at ten new locations with 29 rock chip samples taken
- Prominent lithium pegmatite specialist Nigel Brand engaged to assist Wildcat in geochemical characterisation
- Further fieldwork planned

Wildcat Resources Limited (ASX: WC8) ("Wildcat" or "Company") is pleased to announce it has identified ten localities containing outcropping pegmatites as part of follow-up fieldwork at the **Wildplay JV Project in the Eastern Goldfields, WA¹**.



Figure 1 – Pegmatite outcrop located 500m southeast of Red Panda.



WILDCAT
RESOURCES

ASX Code: WC8

Director: Jeff Elliott
Director: Matthew Banks
Director: Alex Hewlett
Director: Aidan Platel

CEO: Samuel Ekins

Secretary: James Bahen

REGISTERED OFFICE

Level 2, 25 Richardson St,
West Perth, WA, 6005

Postal Address

Level 2, 25 Richardson St,
West Perth, WA, 6005

WEBSITE

www.wildcatresources.com.au

T: +61 (8) 6555 2950

F: +61 (8) 6166 0261

ACN: 098 236 938

Wildcat Resources Ltd

Wildcat Resources is a company focussed on discovery with strategic landholdings in world class provinces in Australia. The company has key landholdings for gold in the Lachlan Fold Belt(NSW), lithium in the Eastern Goldfields(WA) and gold in the Mallee Province – Pilbara(WA).

FOR ENQUIRIES PLEASE CONTACT:

info@wildcatresources.com.au

T: +61 (8) 6555 2950

¹ ASX announcement 28th Sep 2021:

<https://www.investi.com.au/api/announcements/wc8/4aaca066-af7.pdf>

Chief Executive Officer Samuel Ekins said “Recent reconnaissance fieldwork at the Red Panda Wildplay JV Project has identified multiple pegmatite outcrops within a 5km radius of the Red Panda Prospect. Encouragingly, two of these pegmatites appear to be over two hundred metres long.” Samples have been collected to assess for pegmatite-hosted lithium-caesium-tantalum (LCT) mineralisation. The recent work highlights that the tenements are underexplored, and further work is planned to address this.”

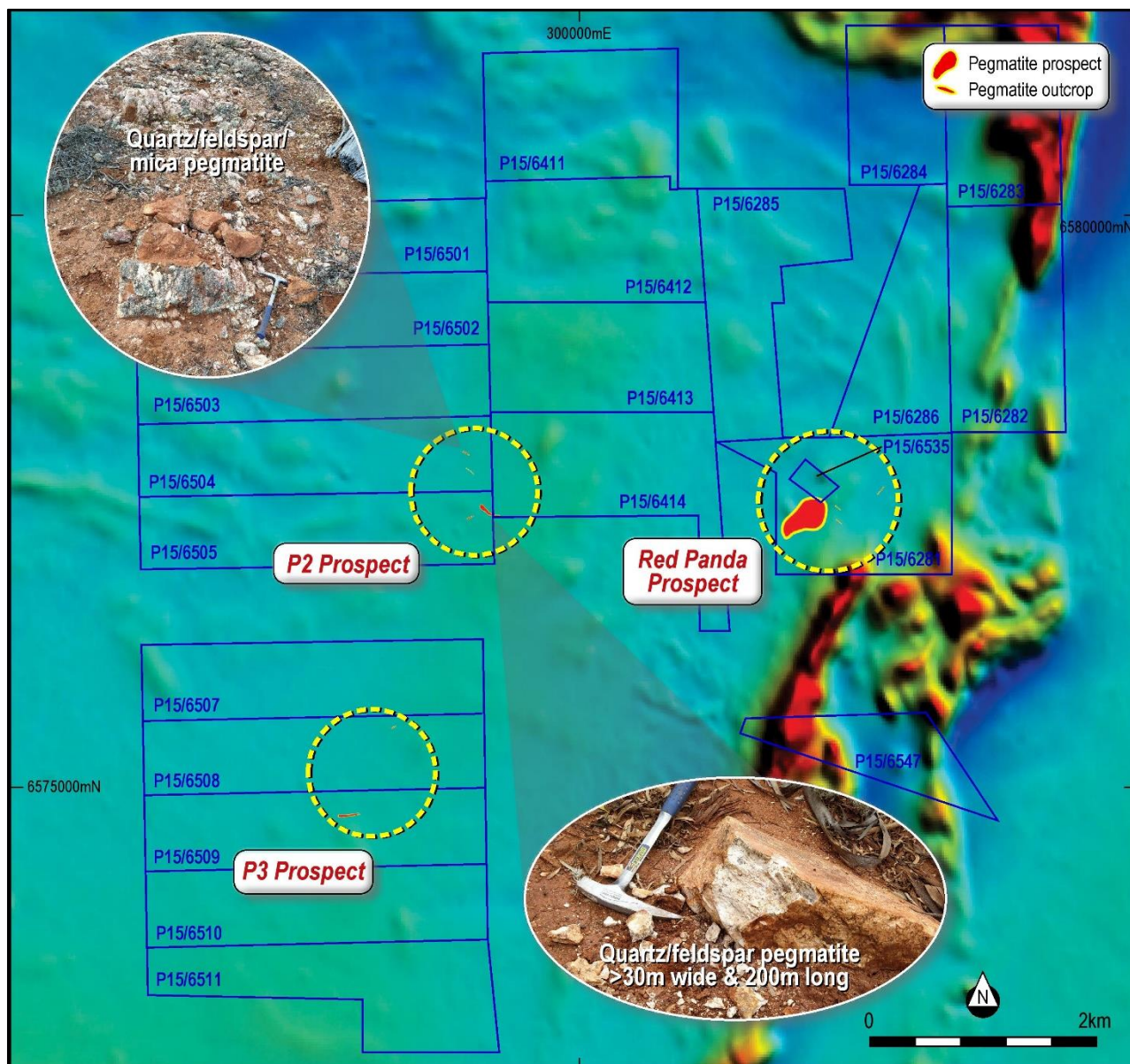


Figure 2 – Targets containing pegmatite outcrop identified by recent fieldwork at the Wildplay JV overlaid on aerial magnetic image.

Numerous pegmatite targets identified

Wildcat identified ten localities containing outcropping pegmatite as part of exploration fieldwork within a 5km radius of the Red Panda pegmatite prospect on the Wildplay JV tenements¹. These varied in lateral extent and the degree of surface weathering. Two of the pegmatites had outcrops that were at least 30m wide and extended over 200m of strike and a third pegmatite extended over 180m. The occurrence of large pegmatites and clusters of pegmatites is encouraging, and further fieldwork is planned to continue to assess the Wildplay tenements for pegmatite-hosted LCT mineralisation.

Twenty nine rock chip samples were collected from the pegmatite outcrops. These have been submitted for mineralogical and geochemical analysis (results pending). Prominent geochemist, Nigel Brand, has been engaged by Wildcat to assist in the discrimination of the chemistry and mineralogy of the pegmatite outcrops, as well as the samples from RC drilling² and outcrop sampling at Red Panda, with the goal to identify geochemical vectors that will assist the exploration of the project.

Next Steps

- Once assays are received, Nigel Brand will review the results for indicator and economic minerals to characterise the pegmatites to assist with exploration planning
- Assess geophysical and geochemical exploration techniques for prospect definition
- Further geological mapping and other fieldwork on the Wildplay JV tenements

About Red Panda

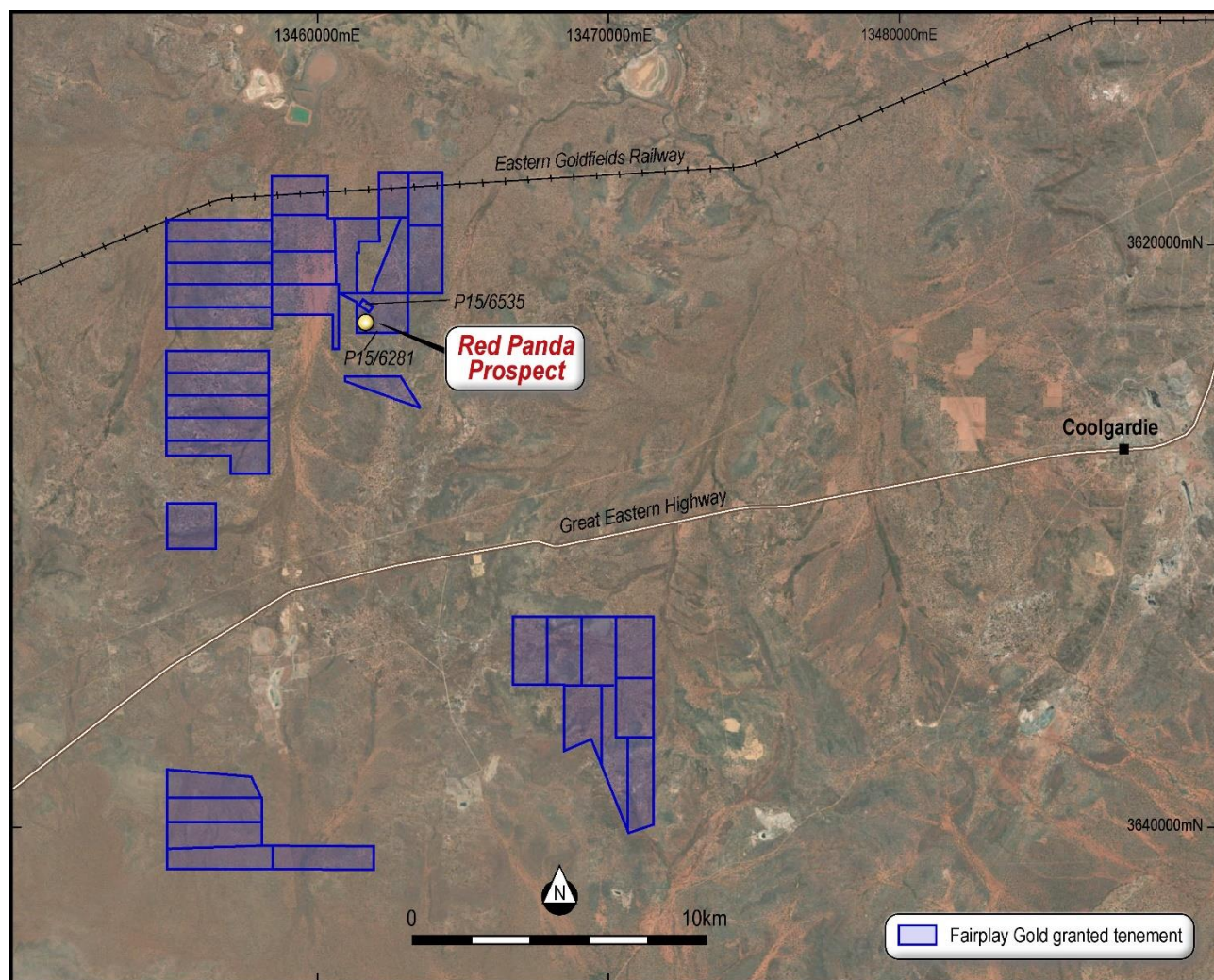
Wildcat has entered an option agreement to earn an interest of up to 75% in the non-gold rights of Fairplay Gold Pty Ltd's 65km² Bullabulling project (Wildplay JV)¹, located approximately 20km west of Coolgardie in the Eastern Goldfields.

The project is hosted in a folded package of upper greenschist to mid amphibolite facies mafic, ultramafic, sedimentary, and felsic to intermediate Archaean aged rocks on a trend containing LCT pegmatites at Ubini that were mined in the early 1900s.

Red Panda is a LCT pegmatite prospect defined by subcropping occurrences of pegmatite and abundant quartz and pegmatite float at surface and mineralogical and geochemical associations consistent with LCT pegmatites¹. The pegmatite occurrences appear to correlate with a conspicuous 250m x 450m pear-shaped vegetation anomaly marked by a transition from eucalyptus woodland to acacia scrub.

RC drilling and fieldwork in September and October 2021 by Wildcat suggests that the pegmatites are differentiated and zoned and may be in the form of a swarm of dykes. Assays are pending and further fieldwork is required to determine the geometry, extents, and mineralogy of the pegmatite bodies at Red Panda and in other areas of the tenement package.

² ASX announcement 8 Oct 2021: <https://www.investi.com.au/api/announcements/wc8/587c9c14-ca0.pdf>



- ENDS -

This announcement has been authorised by the Board of Directors of the Company.

FOR FURTHER INFORMATION, PLEASE CONTACT:

Mr. Matthew Banks

Executive Director

Tel: +61 (8) 6555 2950

info@wildcatresources.com.au

Mr. Samuel Ekins

Chief Executive Officer

Tel: +61 (8) 6555 2950

info@wildcatresources.com.au

ASX Announcement

28 October 2021

Forward-Looking Statements

This document may include forward-looking statements. Forward-looking statements include, but are not limited to, statements concerning Wildcat Resources Limited's planned exploration programme and other statements that are not historical facts. When used in this document, the words such as "could," "plan," "estimate," "expect," "intend," "may", "potential," "should," and similar expressions are forward-looking statements. Although Wildcat Resources Limited believes that its expectations reflected in these forward-looking statements are reasonable, such statements involve risks and uncertainties and no assurance can be given that actual results will be consistent with these forward-looking statements.

Competent Person's Statement

The information in this report that relates to Exploration Results for the Red Panda Project is based on, and fairly represents, information compiled by Mr Samuel Ekins, a Competent Person who is a Member of the Australian Institute of Mining and Metallurgy (AusIMM). Mr Ekins is a fulltime employee of Wildcat Resources Limited. Mr Ekins has sufficient experience that is relevant to the style of mineralisation and type of deposit under consideration, and to the activity being undertaken to qualify as a Competent Person as defined in the 2012 Edition of the JORC Code. Mr Ekins consents to the inclusion in the report of the matters based on his information in the form and context in which it appears.