



magnetic resources™

Magnetic Resources

An exciting Gold Development play in the heart of
Laverton, Western Australia

November 2021

DISCLAIMER

The information contained in this presentation has been prepared by Magnetic Resources NL (MAU). This presentation is not an offer, invitation, solicitation or other recommendation with respect to the subscription for, purchase or sale of any securities in MAU. This presentation has been made available for information purposes only and does not constitute a prospectus, short form prospectus, profile statement or offer information statement. This presentation is not subject to the disclosure requirements affecting disclosure documents under Chapter 6D of the Corporations Act.

This presentation may contain certain forward-looking statements and projections regarding estimated, resources and reserves; planned production and operating costs profiles; planned capital requirements; and planned strategies and corporate objectives. Such forward looking statements/projections are estimates for discussion purposes only and should not be relied upon. They are not guarantee of future performance and involve known and unknown risks, uncertainties and other factors many of which are beyond the control of Magnetic Resources NL. The forward-looking statements/projections are inherently uncertain and may therefore differ materially from results ultimately achieved.

Magnetic Resources NL does not make any representations and provides no warranties concerning the accuracy of the projections and disclaims any obligation to update or revise any forward-looking statements/projects based on new information, future events or otherwise except to the extent required by applicable laws. While the information contained in this presentation has been prepared in good faith, neither MAU or any of its directors, officers, agents, employees or advisors give any representation or warranty, express or implied, as to the fairness, accuracy, completeness or correctness of the information, opinions and conclusions contained in this presentation. Accordingly, to the maximum extent permitted by law, none of MAU, its directors, employees or agents, advisers, nor any other person accepts any liability whether direct or indirect, express or limited, contractual, tortious, statutory or otherwise, in respect of, the accuracy or completeness of the information or for any of the opinions contained in this presentation or for any errors, omissions or misstatements or for any loss, howsoever arising, from the use of this presentation.

COMPETENT PERSON'S STATEMENT

Information in this report that relates to Exploration is based on information reviewed or compiled by George Sakalidis BSc (Hons) who is a member of the Australasian Institute of Mining and Metallurgy. George Sakalidis is a director of Magnetic Resources NL.

He has sufficient experience which is relevant to the style of mineralisation and type of deposit under consideration and to the activity which he is undertaking to qualify as a Competent Person as defined in the 2012 edition of the 'Australasian Code for Reporting of Exploration Results, Mineral Resources and Ore Reserves'. George Sakalidis consents to the inclusion of this information in the form and context in which it appears in this report.

ASX LISTING RULE 5.23

The company has reported information contained in prior ASX announcements and has cross referenced these announcements. The Company confirms that is not aware of any information or assumptions since the announcements were made that would likely materially change the content of these announcements.

This announcement references prior ASX announcements dated 22/10/2021, 14/09/2021, 16/08/2021 08/07/2021, 23/06/2021, 3/06/2021, 29/04/2021 19/04/2021 15/02/2021 12/02/2021, 8/02 2021, 11/01/2021, 01/12/2020, 16/11/2020,, 02/11/2020, 27/10/2020. 18/09/2020, 3/08/2020, 29/06/2020, 18/05/2020,5/05/2020, 9/03/2020, 27/02/2020, 20/02/2020, 5/2/2020, 23/1/2020, 17/1/2020, 28/11/2019

This presentation has been authorised for release by George Sakalidis

Why invest in Magnetic?

Tight capital structure, strong share price performance and long-term high net worth investors separates MAU from our peers



The continuous 3km HN9, at surface, shallow dipping, gold lodes and recent seismic has shown the large depth potential along numerous major thrust zones



Enlarged area now including HN9, Lady Julie HN5 HN6 increasing the size of the mineralised zone adding 15km of gold targets.



Exciting multiple thick intersections including 25m at 4.4g/t from 0m and downdip intersections of 36m at 4.0g/t from 116m at Lady Julie. Average depth of drilling only 67m on all Projects providing scope for the depth vector.



Elephant Country – this region has world class gold deposits hence lots of existing processing facilities within trucking distance 10-35kms

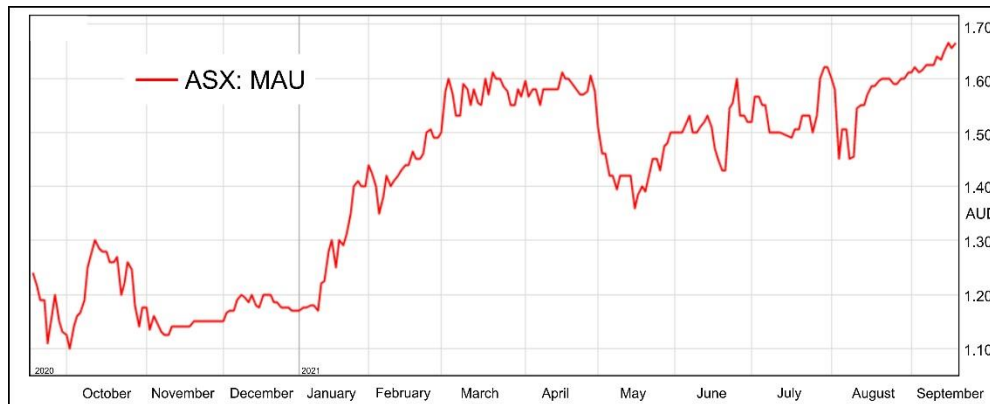


M & A potential with strong interest from a number of our producing neighbours.

Corporate Overview

ASX CODE	MAU
Shares on issue	218 M
Contributing shares on issue	20.4 M
Options	10.6 M
Fully Diluted Shares on Issue	249 M
Current share price	\$1.60
Market capitalisation	\$350M
Cash on Hand (1 November 2021)	\$4.2M
Debt	Nil

TOP SHAREHOLDERS	
Chim Seng Oan	15.5%
Hian Siang Chan	13.8%
Target Range and Alcock Super Fund	9.2%
Choon Kong Lim	7.2%
Top 20	77.3%



Magnetic Resources - Company Overview

Gold exploration in a world class gold belt

Our Assets

The company has 261km² of prospective exploration tenements in the Laverton region and 213km² in the Leonora Region.

Our 100% owned tenements are within 10-15km of operating gold mines of Dacian and Goldfields.

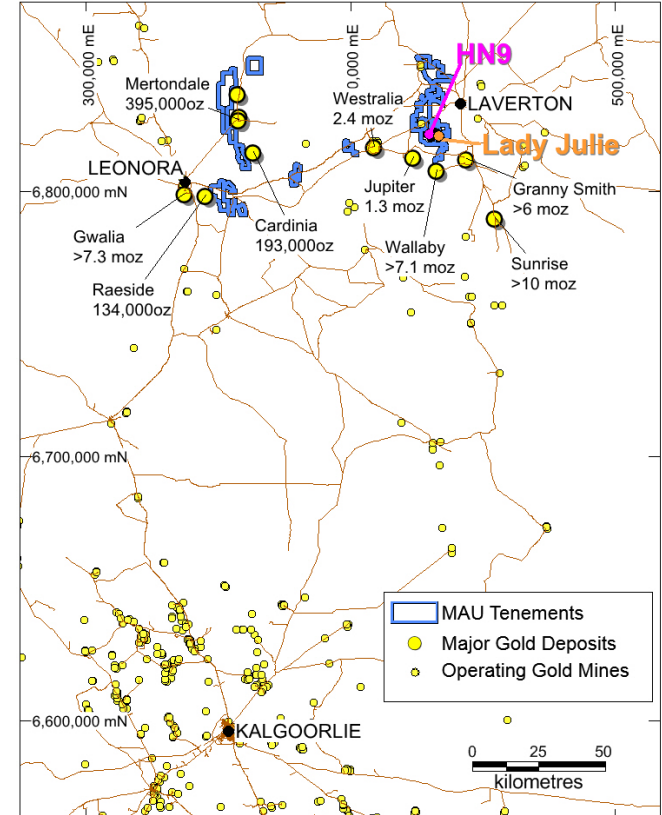
Developments

Magnetic Resources have focused on key strengths utilising ground magnetics soil geochemistry and recently shallow seismic to discover and secure our projects.

A recent 2D shallow seismic survey and a passive seismic survey over a 30 sq. km area has revealed 8 thrusts that come near surface that trend NS and are 6km in length. These thrusts appear to control mineralised areas including HN9 and Lady Julie and other potential areas are being investigated along the remaining thrusts areas.

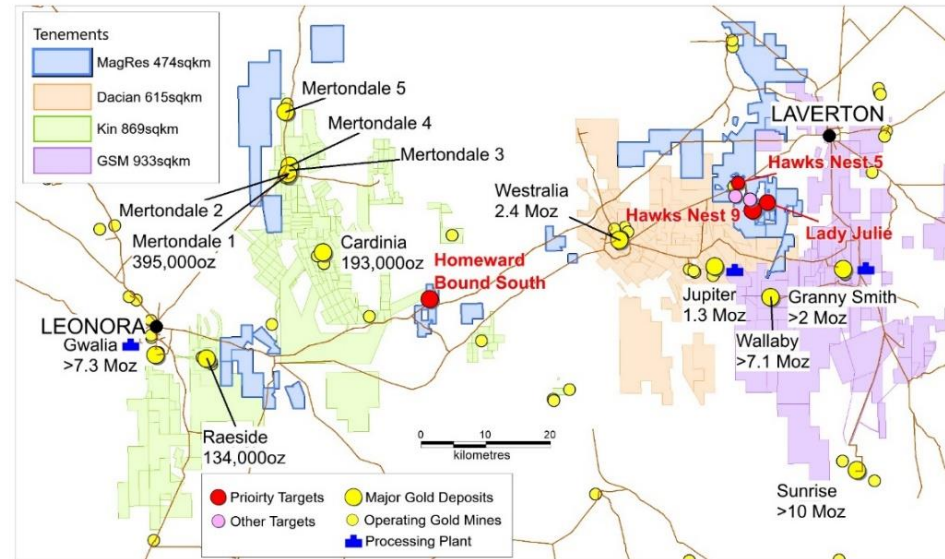
Extensive shallow exploration at HN5, HN6, HN9 and Lady Julie - 1352 RC holes for 87,457m averaging only 65m presenting tremendous upside at depth.

Upside expected from deeper drilling in mid 2021 including targets generated from shallow seismic drilling, which has a large 4000m drilling programme being planned with hole depths between 200-400m length.



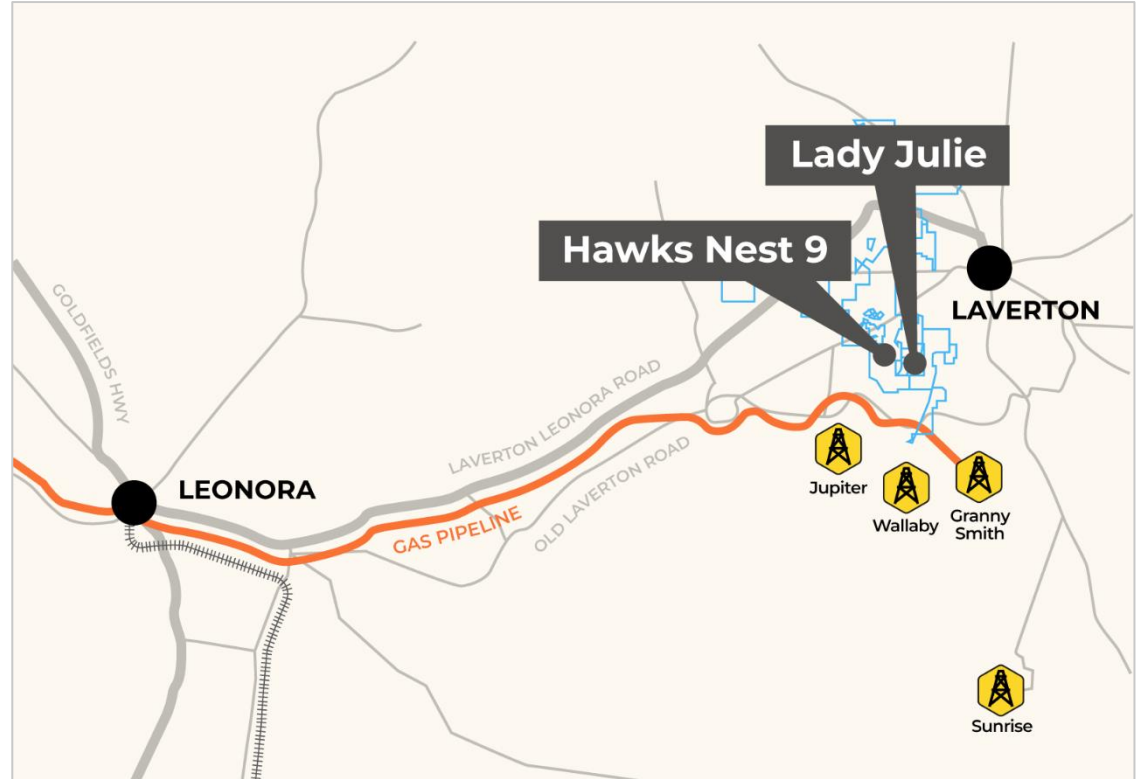
Significant land holding in the world-class Laverton gold region

- The Leonora-Laverton district is well endowed with large world-class gold deposits having over 34Moz (mined plus resources), second to the Kalgoorlie region in WA.
- A number of very large deposits are present including:
 - **Wallaby** (>7.1Moz mined plus resource),
 - **Sunrise Dam** (>10Moz mined),
 - **Granny Smith** (>2Moz mined),
 - **Gwalia** (7.3Moz mined plus resource),
 - **Westralia** (2.4Moz mined plus resource) and
 - **Jupiter** (1.3Moz mined resource).
- Magnetic's Hawks Nest tenements are only 15km north of the Wallaby deposit, 35km north of the Sunrise Dam deposit and 10km NE of the Jupiter deposit– multiple mills provide potential for toll treatment and M&A interest.
- The objective of Magnetic Resources' gold exploration program is to identify large economic gold deposits of 1Moz or greater – using the interpretation of known geology, drilling, aeromagnetics, geochemistry of the region.. Magnetics priority projects are Hawks Nest 9 (HN9) and Lady Julie.



Magnetic's projects are all close to key infrastructure and services required for exploration

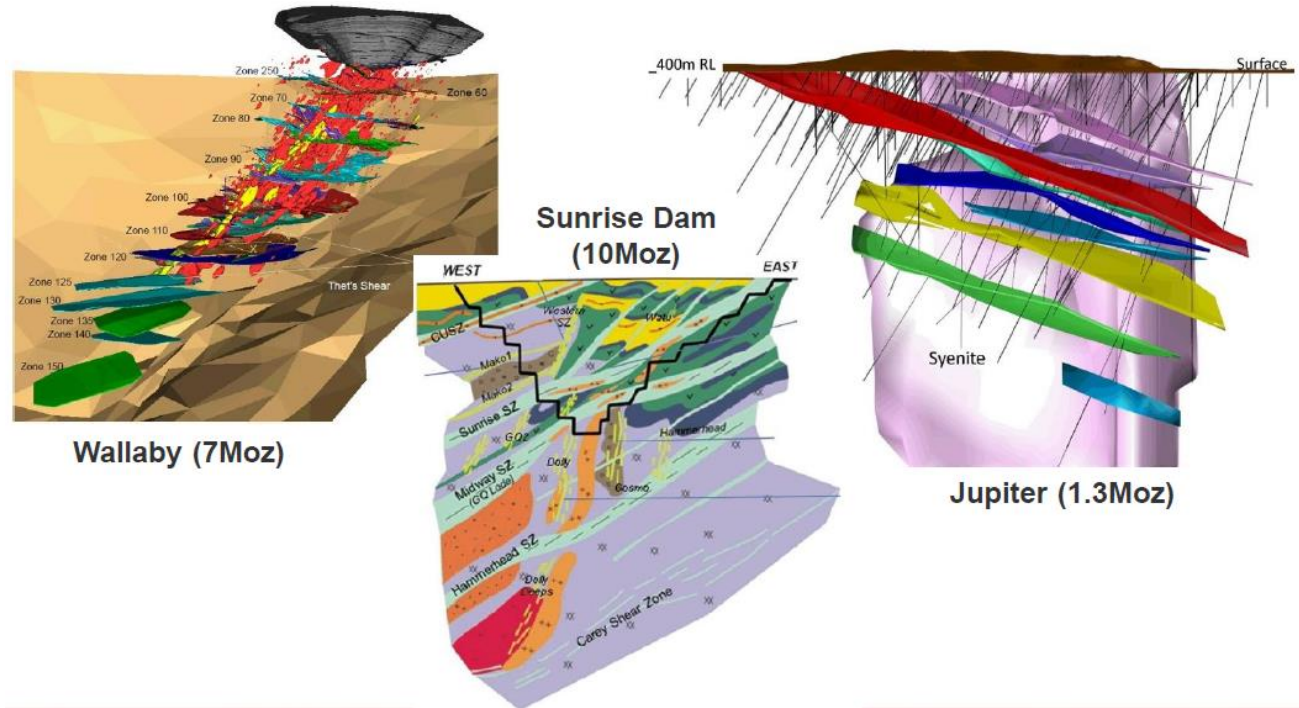
- All projects can be accessed from Leonora via the sealed Laverton to Leonora Highway and via regular commercial flights from Perth to Laverton and Leonora
- The Laverton area is well traversed by major sealed roads and a gas pipeline.



Regional Deposits – Schematic Cross Sections

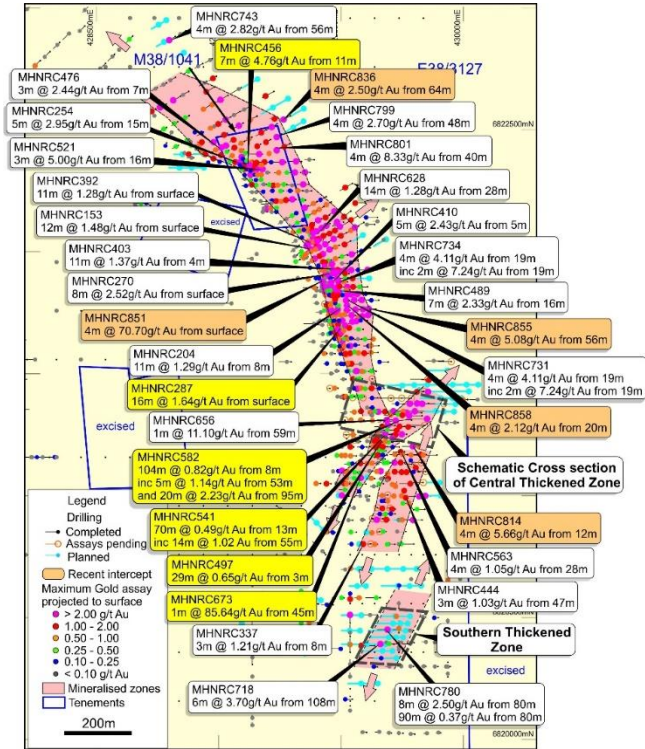
All Major gold deposits at Laverton have intrusions and stacked lodes

- Deep seated intrusions some of which come to surface. Wallaby and Jupiter deposits have syenite intrusions that come close to surface. Sunrise has deeper intrusions that do not get to surface.
- Shallow-dipping stacked gold lodes or shear zones that continue at depth. Magnetic's HN9 is similar and has at least four stacked porphyry lodes.

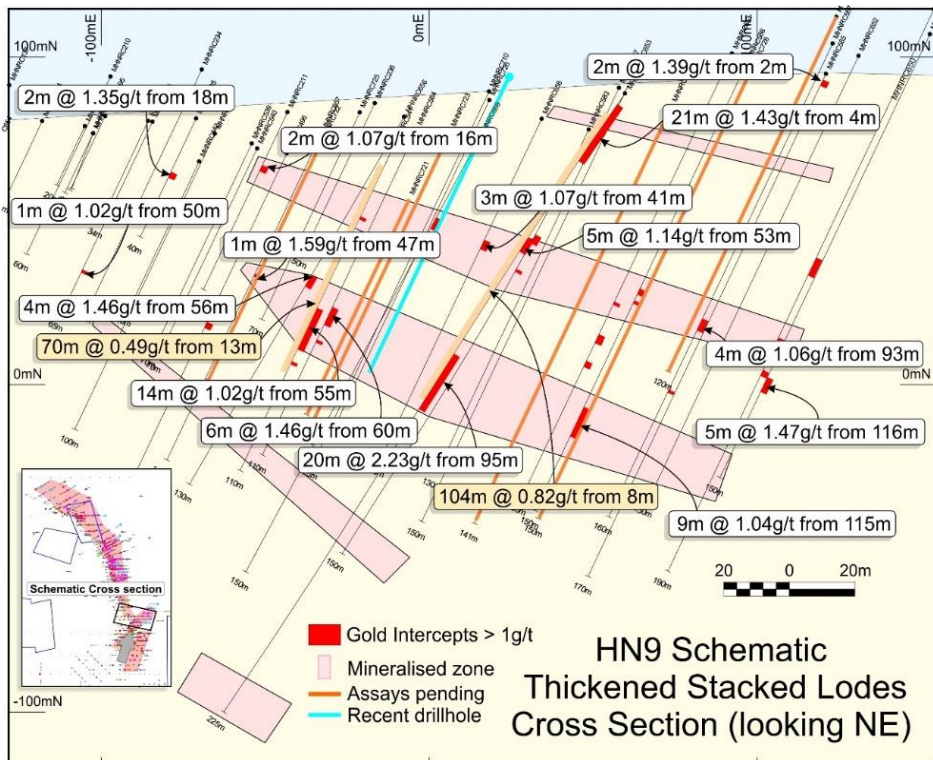


Magnetic has continually conducted large drilling programmes at HN9, Lady Julie, HN5 and HN6 with 1469 RC holes totaling 98,607m.

- Within the HN5, HN6, HN9 and Lady Julie areas there are many new shallow intersections with a total of 1508 intersections (ranging from 1 to 30m) greater than 0.5g/t Au, which includes 655 greater than 1g/t Au, 240 greater than 2g/t Au, 126 greater than 3g/t Au and 79 greater than 4g/t Au.
- **The HN9 Mineralisation is over a 3km length starts from surface and dips shallowly to the east number of intersections start from surface including:**
 - 12m at 1.5g/t from surface in MHNRC153
 - 8m at 2.5g/t from surface in MHNRC270
 - 7m at 4.8g/t from 11m in MHNRC456
 - 14m at 1.3g/t from 28m in MHNRC623.
- The Central Thickened Zone has some very thick intersections including **104m at 0.82g/t Au from 8m in MHNRC582 (including 20m at 2.23g/t Au from 95m.** These thickened zones have multiple stacked shallow dipping lodes similar to the nearby Wallaby, Jupiter and Sunrise Dam gold Deposits.



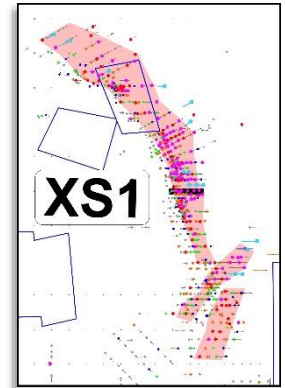
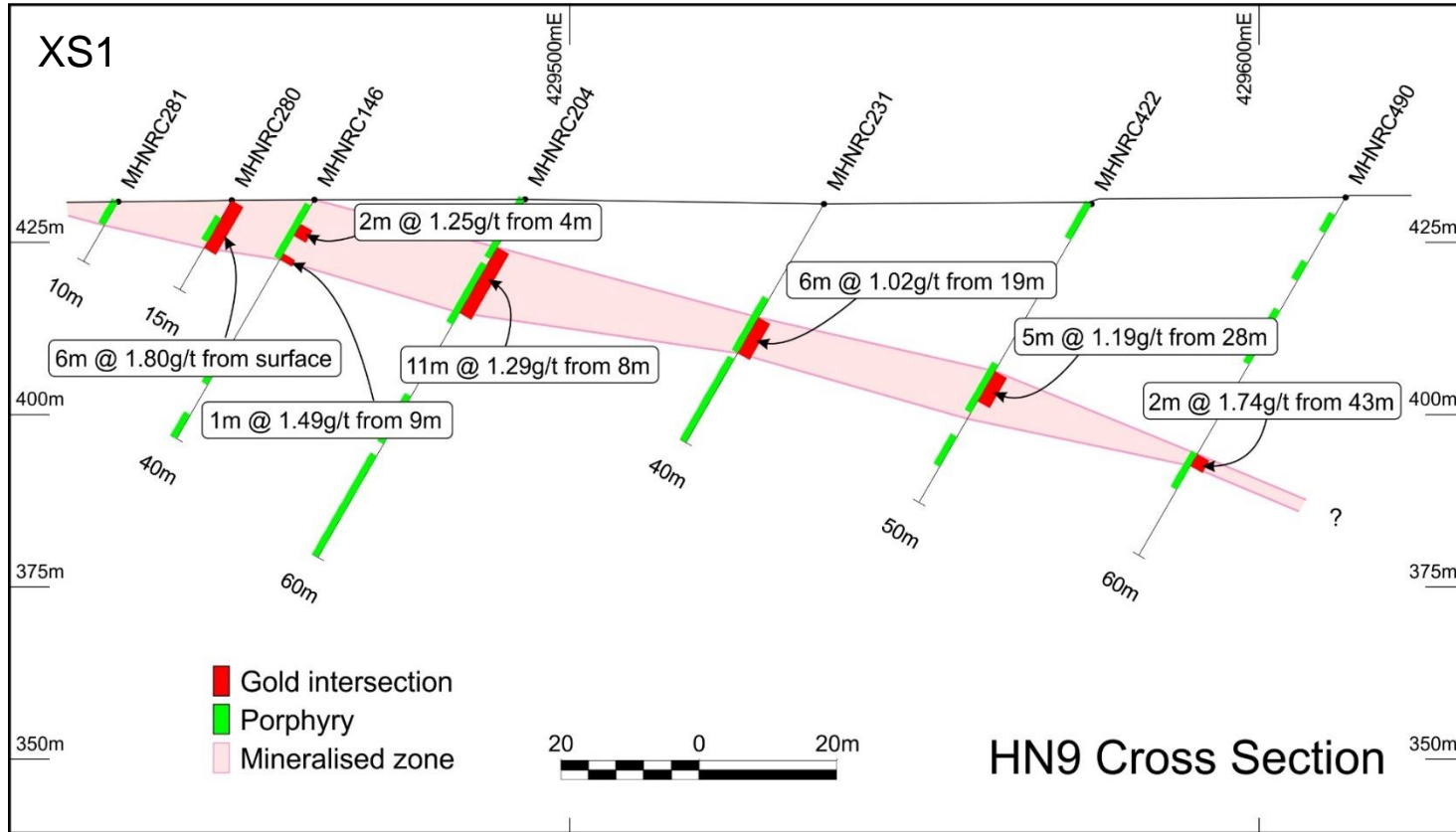
HN9 3KM MINERALISED ZONE



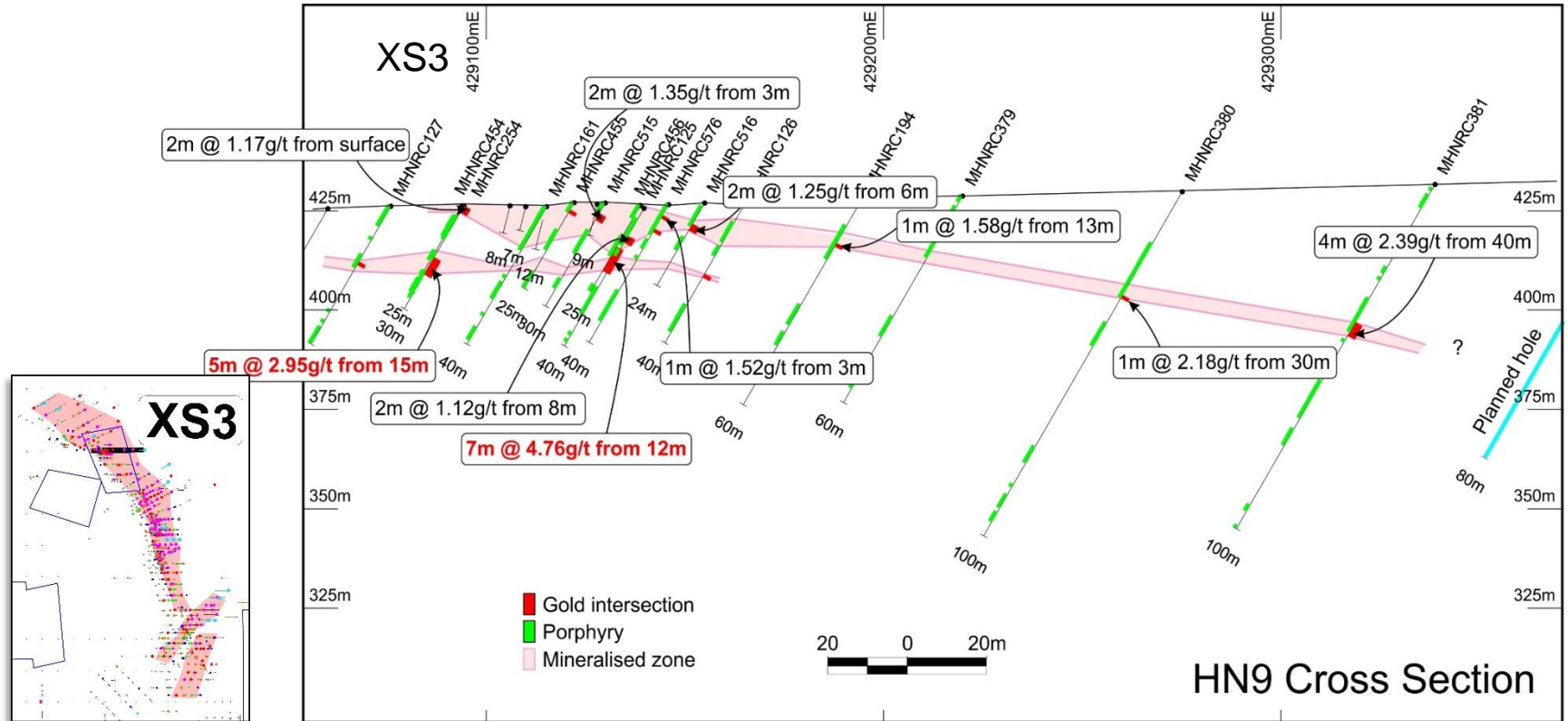
Hawks Nest 9 Deposit Stacked Lodes

- Thickened zone made up of least four stacked porphyry lodes with some large intersections:
 - 104m at 0.8g/t from 8m including 20m at 2.2g/t from 95m.
 - 70m at 0.5g/t from 13m including 14m at 1g/t from 55m.
- In addition, there are some high-grade intersections:
 - 1m at 11.1g/t from 59m in MHNRC656
 - 1m at 85.6 g/t from 45m in MHNRC673
- Thickened zone being drill tested over 700m and is still open to the NE and at depth.
- Has similarities to the Wallaby and Jupiter Deposits.
- Trends to the NE towards the Lady Julie Deposit.

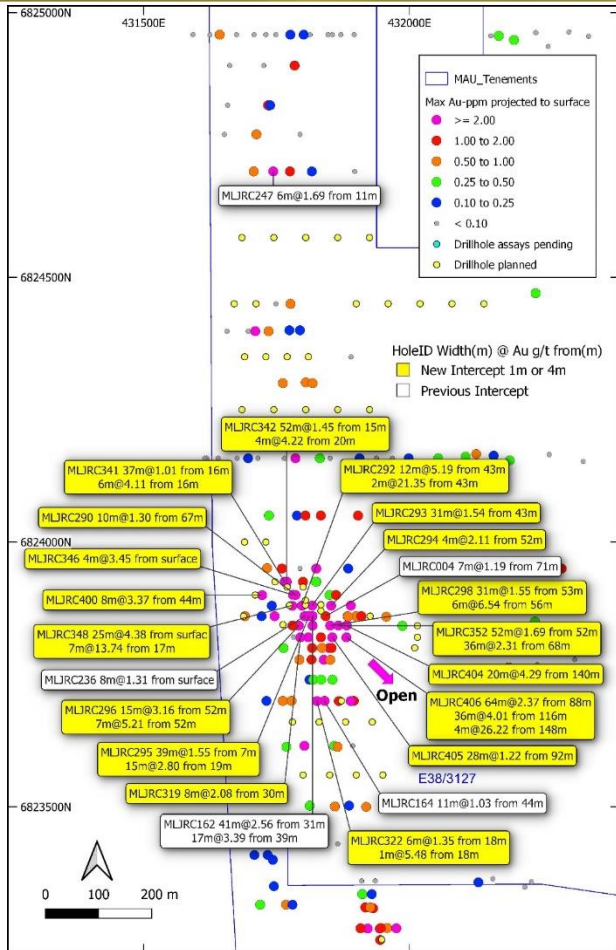
Hawks Nest 9 – Cross Section



Hawks Nest 9 – Cross Section



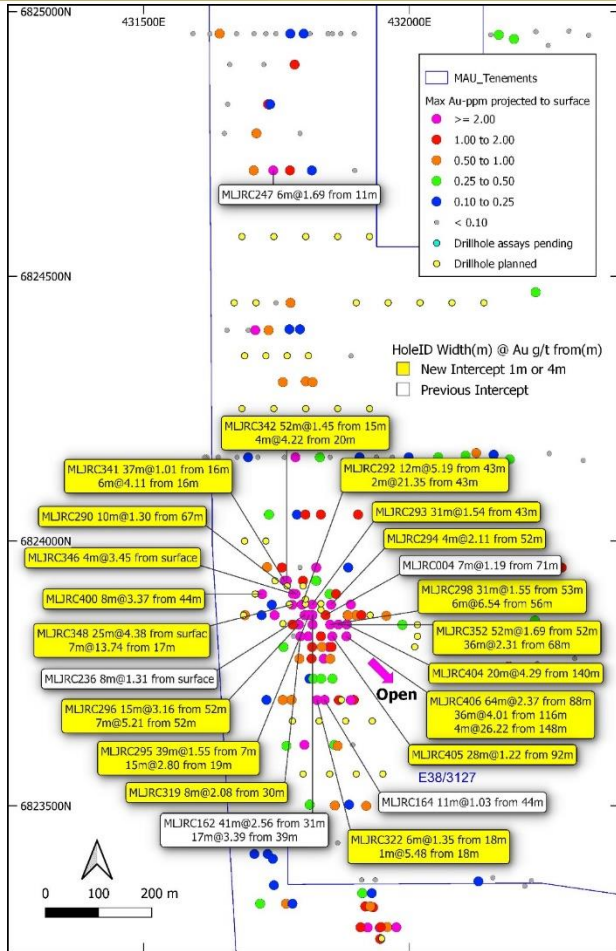
Lady Julie – multiple thick intersections within 1km



Lady Julie 1km zone is open to SE and downdip

- At Lady Julie1 there are multiple thick and high-grade intersections of 41m at 2.6g/t from 31m, which includes 16m at 5.6g/t from 54m in MLJRC162, 28m at 4.5g/t from 0m in MLJRC348, 40m at 2.1g/t 0m in MLJRC295, 20m at 2.6g/t from 52m in MLJRC296, 36m at 1.7g/t from 20m in MLJRC307. 36m at 4.01g/t from 116m in MLJRC406. These intersections are very exciting and are within a 1km distance and are open to the SE and downdip and is being followed up over a 4.6km expanded target zone that includes Lady Julie1.
- A further 47 RC holes for 5154m and 79 AC holes for 4560m will follow up these promising intersection **over the entire 2km long Lady Julie North 1 target zone** and other similar soil geochemical anomalies will be drill tested in this programme. In addition, detailed soil sampling is being carried out directly north of this target over a 1.9km length looking for similar soil anomalies.
- Major mineralised targets HN9 and Lady Julie North appear to straddle two thrusts. A large soil geochemical and shallow RAB geochemical sampling of the major 6km long thrusts outside HN9 and Lady Julie is planned.

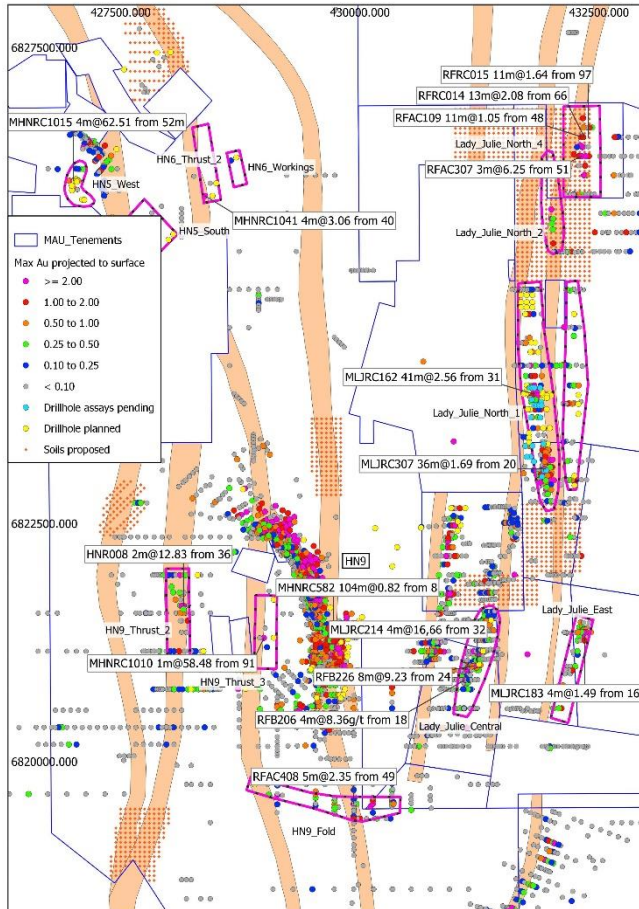
Lady Julie – multiple thick intersections from surface and downdip



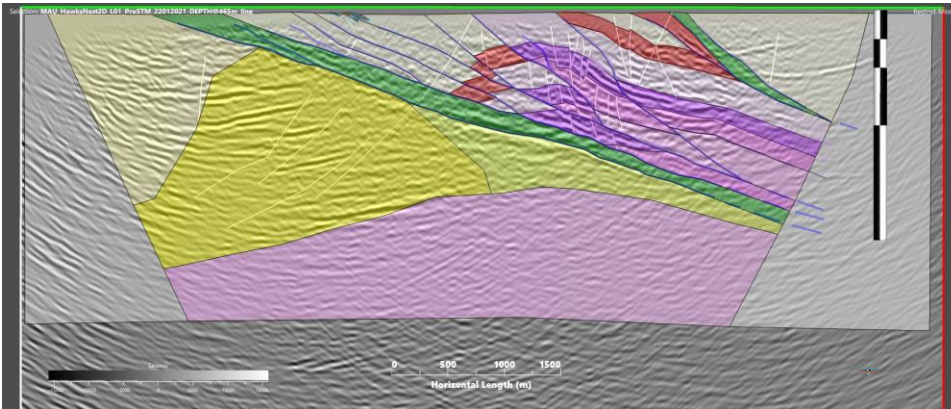
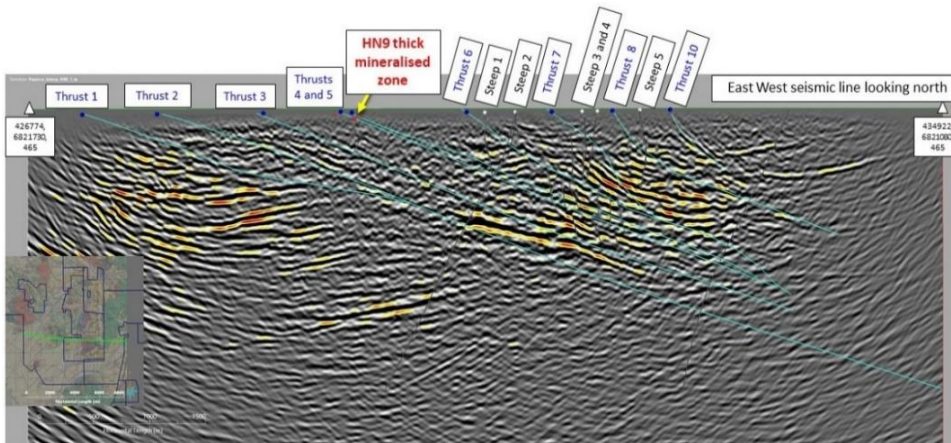
Lady Julie is open to SE and downdip

Hole ID	East	North	From	To	Width	Gold
	MGaz51	MGaz51	m	m	m	g/t
MLJRC406	431956	6823820	116	152	36	4.01
MLJRC404	431955	6823842	140	160	20	4.29
MLJRC352	431910	6823842	68	104	36	2.31
MLJRC351	431790	6823842	8	24	16	1.04
MLJRC405	431911	6823819	92	120	28	1.22
MLJRC348	431791	6823880	0	25	25	4.38
MLJRC327	431936	6823034	4	16	12	1.43
MLJRC326	431935	6823072	7	24	17	2.59
MLJRC319	431810	6823820	28	40	12	1.72
MLJRC298	431880	6823925	53	84	31	1.55
MLJRC296	431820	6823860	52	67	15	3.16
MLJRC295	431823	6823860	0	40	40	2.12
MLJRC293	431850	6823880	43	74	31	1.54
MLJRC292	431820	6823880	43	55	12	5.19
MLJRC342	431800	6823925	15	67	52	1.45
MLJRC341	431775	6823925	16	53	37	1.01
MLJRC162	431835	6823860	31	74	41	2.56

10 New Targets over 15.7km with high-grade result of 41m at 2.6g/t from 32m at Lady Julie.

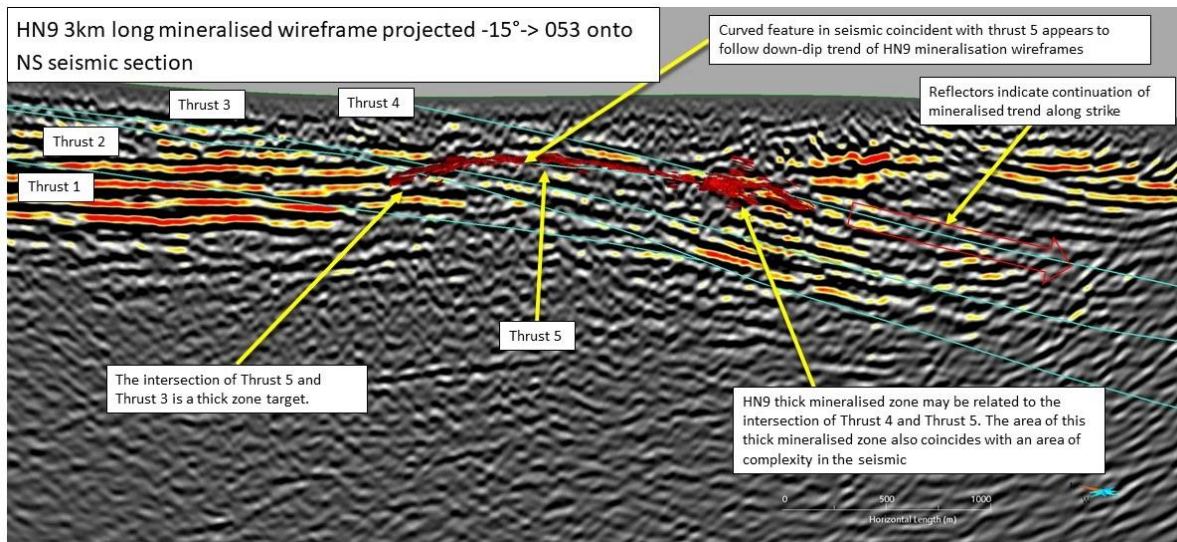


Target	Length km	Significant gold intersection	Description
Lady Julie North (1-4)	4.6	MLJRC162 41m @ 2.6g/t from 32m MLJRC 348 28m at 4.5g/t from 0m MLJRC 36m AT 4.0g/t from 116m	Wide high-grade intersection with 50ppb soil anomaly. Two thrusts and workings and new lease P38/4170.
Lady Julie Central	1.5	MLJRC214 4m @ 16.7g/t from 32m	New NNE-trending gold zone with some excellent high-grade intersections.
Lady Julie East	1.7	MLJRC183 4m @ 1.49g/t from 16m	Southern extension of near-surface high-grade results
HN9 thickened zone	1.5	MHNRC582 104m @ 0.82g/t from 8m	Open 1km to the NE. New holes planned.
HN9 fold	1.5	RFAC408 5m @ 2.35g/t from 49m	Unusual EW trend, part of large regional folding
HN9 Thrust 2	1.2	HNR008 2m @ 12.83g/t from 36m	Drilling extension of high-grade intersection planned.
HN9 Thrust 3	1.2	MHNRC1010 1m @ 58.5g/t from 91m	Drilling extension of new intersection and new lease P38/4126 with thrust.
HN5 West	0.3	MHNRC1015 4m @ 62.5g/t from 52m	Drilling of very high-grade intersection planned
HN5 South	0.7	No drilling to-date	NW extension of Eagles Nest workings
HN6 Thrust 2	1.5	MHNRC1041 1m @ 3.1g/t from 40m	Extension of intersection and initial testing of workings planned.
Total	15.7		



EW Seismic HN9 and Lady Julie

- EW 8km long 2D shallow seismic section interpretation showing major thrusts 1 to 10 thrust packages that come close to surface associated with HN9 (1 to 5) and Lady Julie (6 to 10) and with great depth extents down to 2km.
- Individual thrusts correlates with surface mineralisation at HN9 and Lady Julie.
- Note the thrust fold repeats of the ultramafic (darker purple) and BIF (red) and steep faults which represent a potential fluid migration pathway and trap within the fold.



NS Seismic HN9 and Lady Julie

- NS 5km long 2D shallow seismic section showing five major thrusts associated with HN9 eastern projection.
- Thrust 5 correlates with the down dip extent of the 3km HN9 mineralisation. The thickened zone correlates with the intersection of the Thrusts 5 and 4 and is a zone of complexity.
- Note the 1km potential extension down dip of HN9 and the potential for another thickened zone at the intersection of thrust 5 and thrust 2.

Highly Experienced Team



George Sakalidis
Managing Director

Founding director and shareholder of the Company since incorporation and was the former Managing Director until October 2014 (reinstated as MD April 2017). Mr Sakalidis has worked tirelessly to establish a portfolio of assets which the Company continues to develop for production.

Mr Sakalidis is an exploration geophysicist with over 30 years' industry experience, and his career has included extensive gold, diamond, base metals, iron ore and mineral sands exploration. Mr Sakalidis has been involved in a number of significant mineral discoveries, including the Three Rivers and Rose gold deposits, the Dongara Mineral Sands Deposits and the Boonanarring-Gingin South-Helene Mineral Sands Deposits in Western Australia.



Eric Lim
Non-Executive Chairman

Eric Lim is Managing Director and Head, Group Finance with United Overseas Bank, one of South-East Asia's largest banks. Eric also serves as Chairperson of UOB's Group Environmental, Social and Governance (ESG) Committee. Prior to joining UOB, he held positions with Standard Chartered Bank, OCBC Bank and General Electric in executive positions across the US and Asia Pacific, spanning wholesale banking, consumer finance and corporate finance roles.

He also has extensive audit experience with GE Corporate Audit leading a variety of engagements ranging from process to financial audits. Eric is qualified with an MBA from the Kellogg School of Management and a Bachelor of Accounting from the Nanyang Technological University.



Julien Sanderson
Non-Executive Director

Julien is a chartered accountant with more than 40 years' experience in banking, corporate, accounting, taxation, company secretarial practice and international and local corporate governance. Mr Sanderson's experience spans a range of private and public companies in a broad range of industries including mining and resources.

Previously Mr Sanderson was Financial Controller and subsequently Managing Director and Company Secretary of ASX-listed Biron Corporation Limited, the manufacturer of the Biron Created Emerald. His gold mining & exploration experience was gained as non-executive Chairman of Premier Gold NL and prior to that as Corporate Finance Manager of the Kia Ora Gold Corporation NL group.

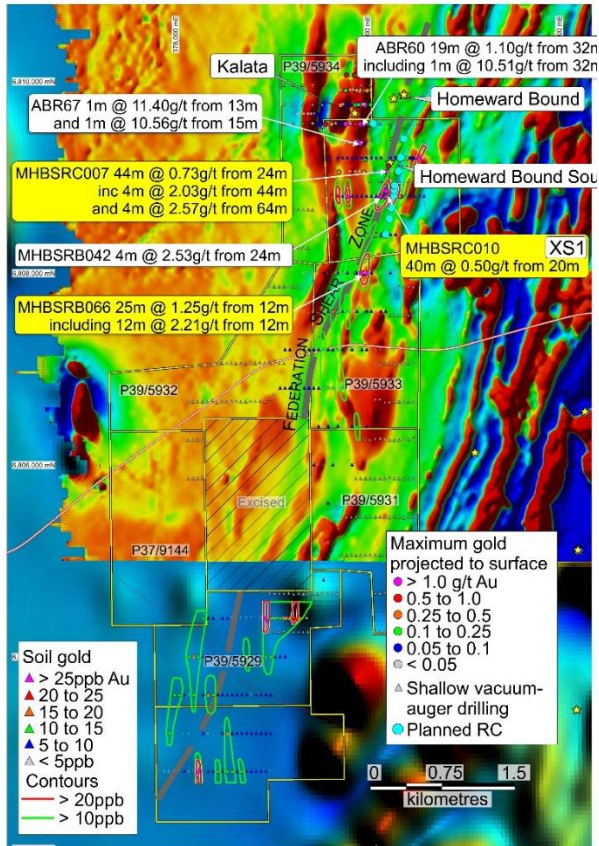


Chan Hian Siang
Non-Executive Director

Mr Chan is the founder, Executive Director and CEO of SP Chemicals Pte Ltd. Mr Chan is also an Executive Officer of SP Chemicals' parent company, Asiawide Holdings Pte Ltd (AWH), and a few other companies within the parent group. From 1985 to 1987, Mr Chan was a Loans and Syndication Officer at Asian-American Merchant Bank Limited. In 1988, he joined AWH as a General Manager and was appointed as an Executive Director of AWH in 1990.

Mr Chan holds a Bachelor of Arts (Economics) degree from York University, Toronto, Canada and a Master of Business Administration from McGill University, Montreal, Canada. Mr. Chan is also a council member of Singapore Chinese Chamber of Commerce and Industry.

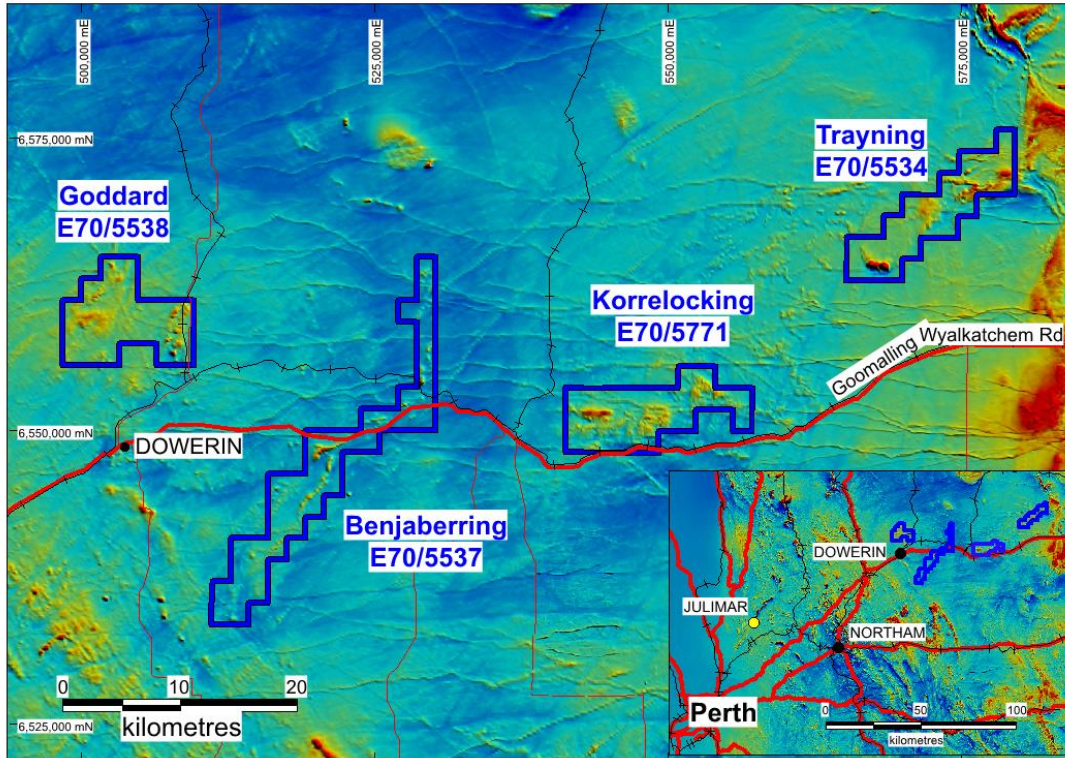
- ✎ We have found thickened stacked lodes near surface that are similar to nearby mines which contain over 20 million oz.
- ✎ We are looking forward to investigating the latest thick shallow intersections within a 1km zone at Lady Julie North 1. Thick surface intersections of 41m at 2.6g/t from 31m with deeper drilling intersection 36m at 4.0g/t from 116m are very encouraging for the depth extent. This gold target zone is being tested over a 300mx600m zone and lies within a 4.6km thrust zone.
- ✎ Other thrust drilling zones are promising, and a large RAB drilling programme will test these other prospective zones.
- ✎ The 3km long HN9 deposit and the adjacent Lady Julie Project and nearby HN5 and HN6 Projects will enhance the size of the resource, ultimately forming a large Mining Centre.
- ✎ M & A potential with strong interest from a number of our producing neighbours.



Large-scale Federation Shear is widely mineralised with positive early results.

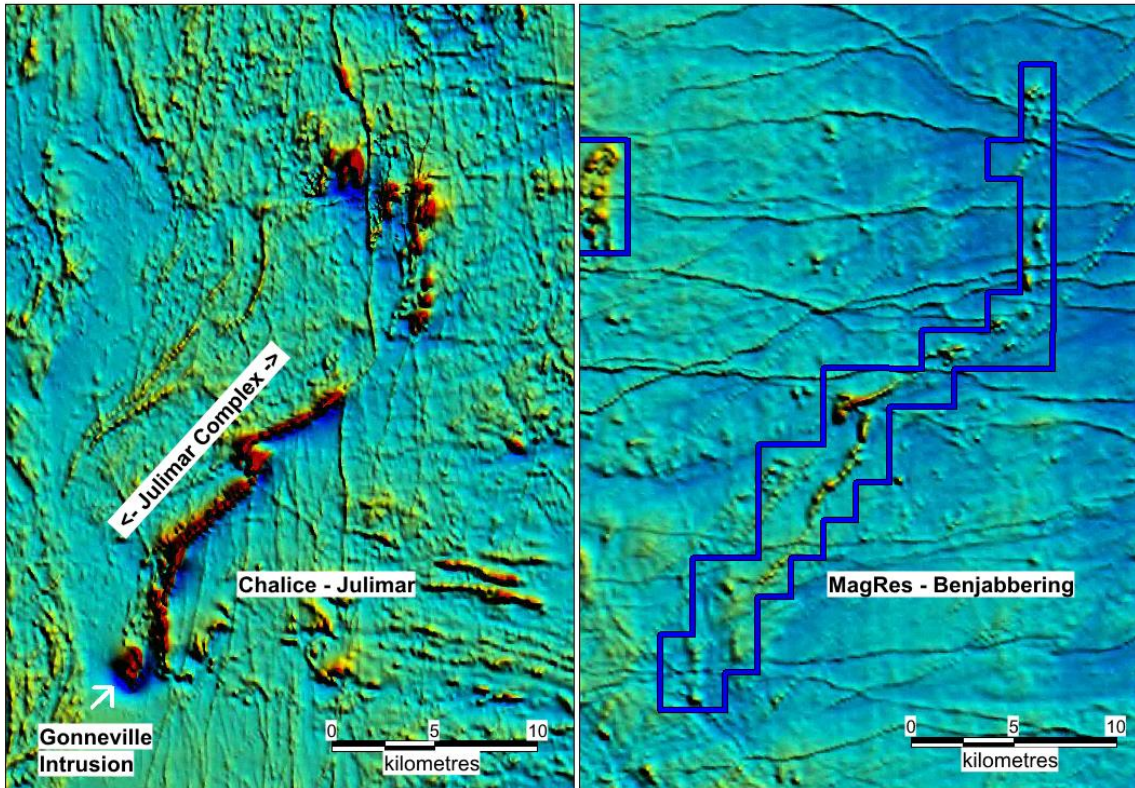
- The 14km² tenements comprise granted prospecting licence eight prospecting licences covering a 5km strike length of the Federation Shear Zone situated 40km east of Leonora.
- Significantly, a line of old gold diggings occurs over a 500m strike length of the Federation Shear corridor.
- Recent results include:
 - 19m at 1.1g/t from 32m (ending in mineralisation)
 - 25m at 1.3g/t from 12m (open to the south)
 - 5m at 4.6g/t from 13m (open to the south)
 - 17m at 0.9g/t from 4m (ending in mineralisation)
 - 24m at 0.7g/t from 24m
 - 40m at 0.5g/t from 20m
 - 24m at 0.5g/t from 12m
- Further follow up drilling of 10 RC holes for 1320m has been completed and is being assessed.

Julimar lookalike areas east of Northam and an existing royalty on a group of tenements north and south of Northam



- The Julimar discovery in March 2020 has led to a massive pegging rush covering 30,000 sq. km. The Julimar Intrusive Complex flags the existence of a new and unexplored West Yilgarn Ni-Cu-PGE Province along the western margin of the Archean Yilgarn Craton.
- Four tenements 322 sq km start 90km north-east of the Julimar high grade palladium-rich Ni-Cu-PGE sulphides at Julimar, 60km NE of Perth.
- Land access has been granted with the main Trayning landowner. Pow has been applied for and AC drilling is planned in December.

Julimar lookalike areas east of Northam and an existing royalty on a group of tenements north and south of Northam



- These projects were selected based on aeromagnetic interpretation after noting the structural setting of the Julimar complex and the Gonneville mineralised discrete magnetic Ni-Cu-PGE body.
- The 111sq. km Benjabbering Project has a large 25km long sinuous aeromagnetic pattern that trends in a NE and N direction and is very similar to the Julimar trends and structures. Several thickened zones may represent possible feeder areas for potential Ni-Cu-PGE mineralisation
- Both the Trayning and Korrellocking Projects have a 2km discrete magnetic target prospective for a Gonneville intrusive.



magnetic resources^{NL}