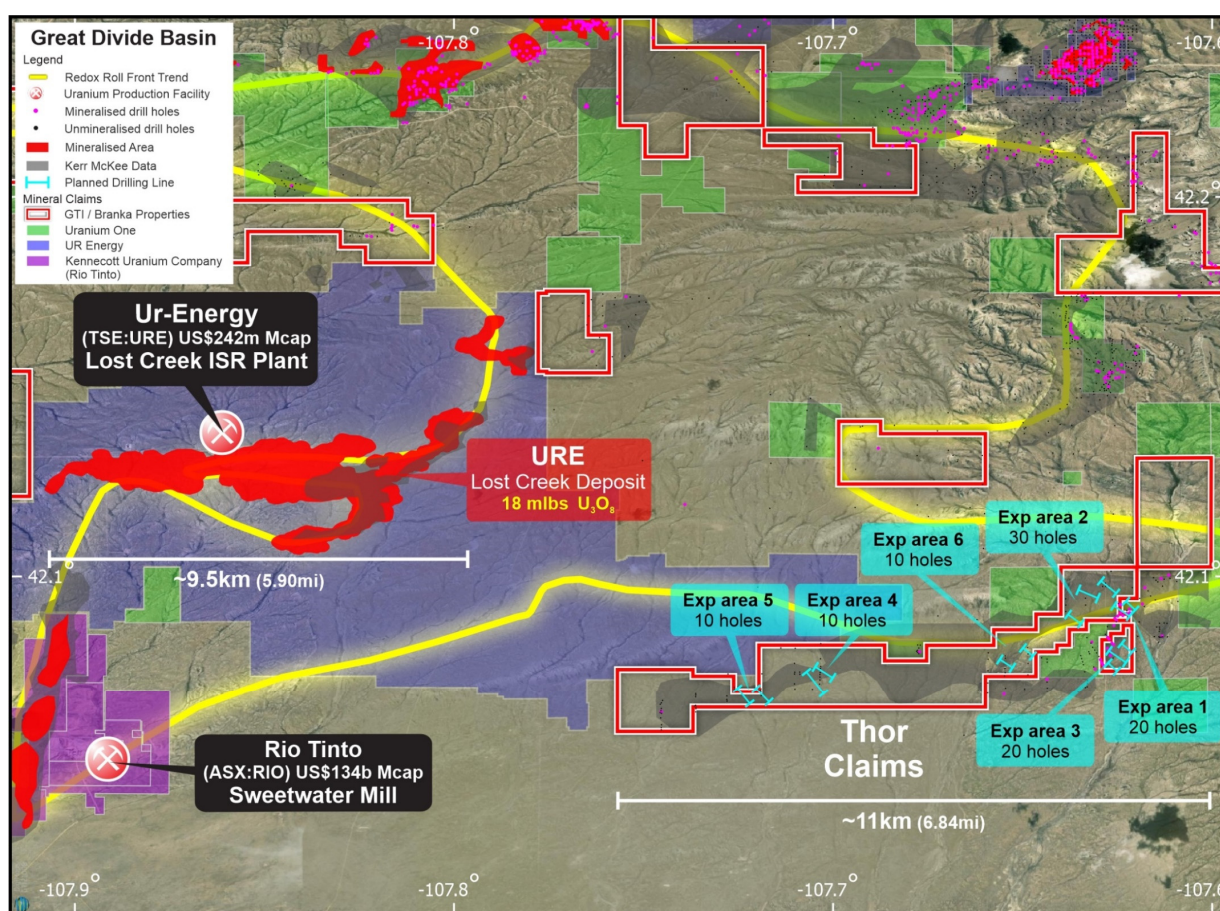


**RIGS SECURED FOR WYOMING URANIUM DRILLING & UTAH FIELDWORK COMPLETED**
**Wyoming ISR Uranium Drilling**

GTI Resources Ltd (**GTI** or **Company**) is pleased to advise that 2 mud rotary drill rigs have been secured for its planned drilling campaign at the Thor ISR uranium project in Wyoming's Great Divide basin (**Figure 1**). As previously advised, GTI is on track to commence drilling during December. This maiden drill program is designed to confirm the grade and tenor of uranium mineralisation that was previously identified by Kerr McGee in the 1970's & 80's and to ultimately support definition of an economic uranium resource.

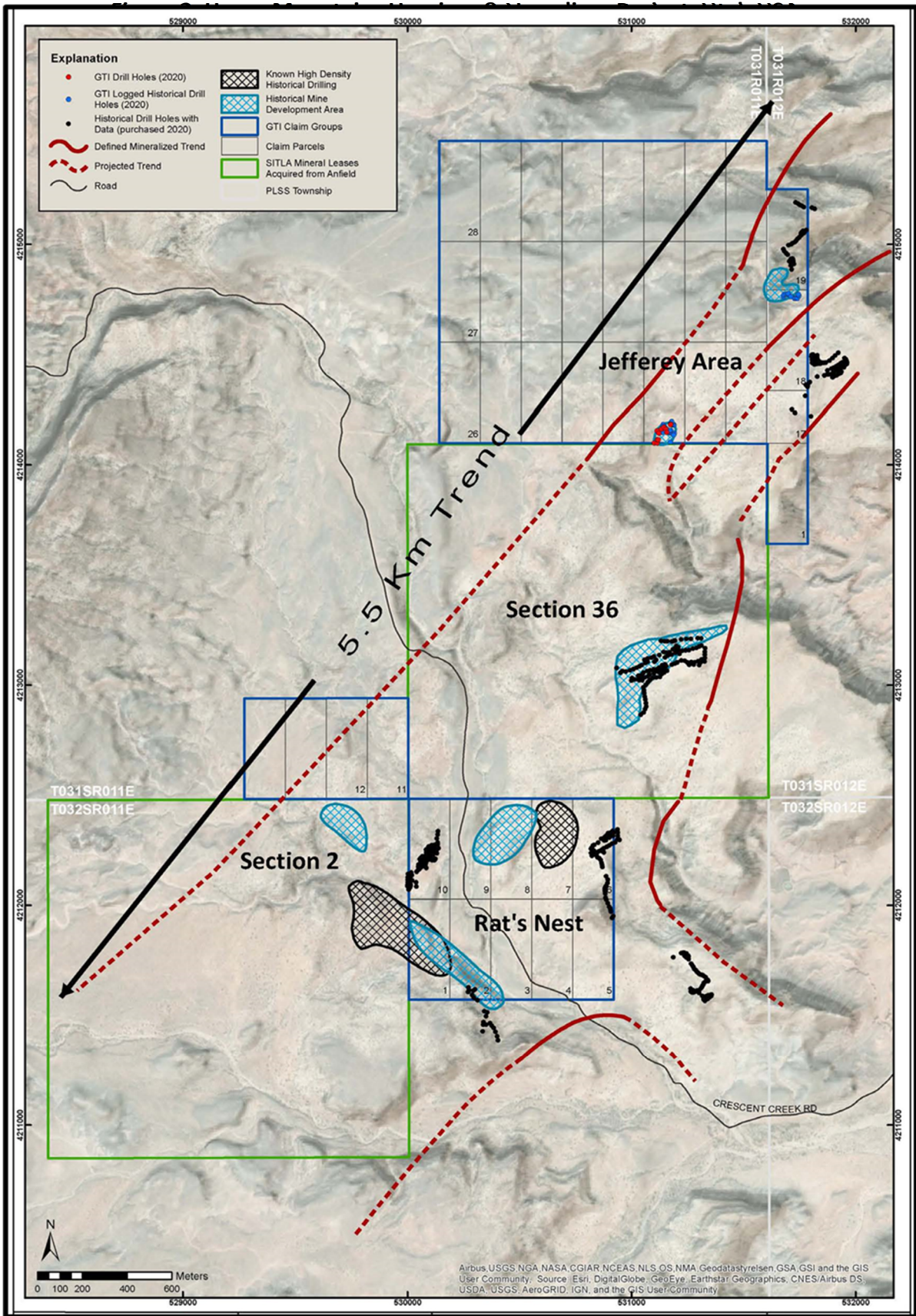
**Figure 1. Thor Project Uranium Drilling Location Map, Great Divide Basin, Wyoming USA.**


**Henry Mountains Utah Uranium & Vanadium Projects**

GTI also completed a field reconnaissance exploration program at its Henry Mountains project. The program aimed to enhance GTI's understanding of uranium & vanadium mineralisation within Section 2 at the southwestern end of the 5.5km mineralised strike including Section 36 between the Jeffery & Rats Nest areas (**Figure 2**). The data collected will help guide any further exploration drilling at the project area.

The program discovered 308 additional backfill-abandoned drill holes and 4 open and loggable drill holes within the extents of the Rats Nest and Section 2 properties. In addition, 3,700 ft of mineralized contact was mapped via outcrop and confirmed by scintillometer reading. 34 open underground mine workings were located and mapped with 4 of the underground workings shown to extend beyond 100 feet in drift length. The information gathered from confirms the overall 5.5km Trend and has provided valuable data to help guide the next phase of drilling being considered for the Utah spring in early 2022.

During the field program the State of Utah inspected the restoration and reclamation of the previous spring 2021 drilling. The restoration was accepted, and partial bond release is expected allowing the roll-over of the bond for future drill programs.



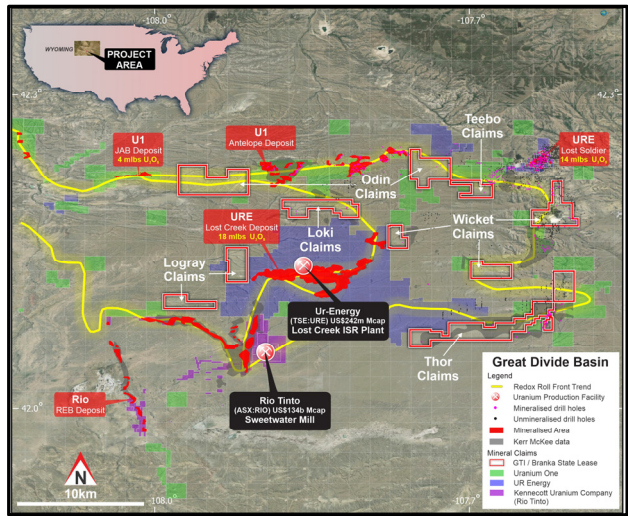
-Ends-

This ASX release was authorised for release by the Directors of GTI Resources Ltd. Bruce Lane, (Executive Director), GTI Resources Ltd

# GTI RESOURCES LTD – SUMMARY OF PROJECTS

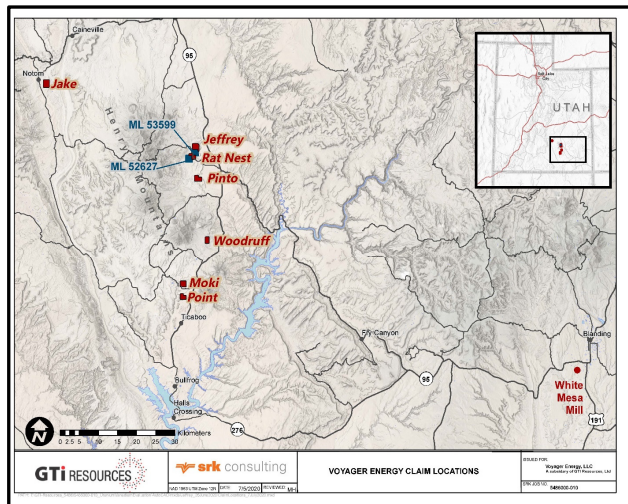
## GREAT DIVIDE BASIN ISR URANIUM, WYOMING, USA

GTI resources has entered into a binding agreement to acquire 100% of Branka Minerals Pty Ltd (**Branka**) (**Acquisition**) the holder of ~22,000 acres (~8,900 hectares) across several groups of strategically located and underexplored mineral lode claims (**Claims**) and 2 state leases (**Leases**), prospective for sandstone hosted uranium, located in the Great Divide Basin (**GDB**), Wyoming, USA & the Uravan Belt, Colorado, USA (the **Properties**). The Wyoming Properties are located in proximity to UR Energy’s (**URE**) Lost Creek ISR Facility & Rio Tinto’s (**RIO**) Sweetwater/Kennecott Mill and the GDB roll front REDOX boundary.



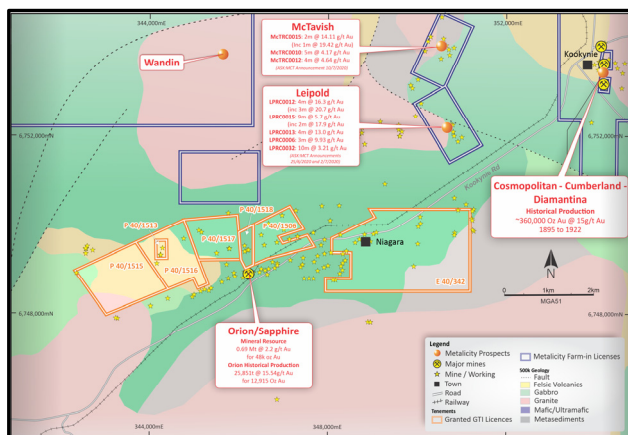
## HENRY MOUNTAINS URANIUM/VANADIUM, UTAH, USA

The Company has ~1,500 hectares of land holdings in the Henry Mountains region of Utah, within Garfield & Wayne Counties. Exploration is currently focused on approximately 5kms of mineralised trend that extends between the Rat Nest & Jeffrey claim groups & includes the Section 36 state lease block. Uranium & vanadium mineralisation in this location is generally shallow at 20-30m average depth. The region forms part of the prolific Colorado Plateau uranium province which historically provided the most important uranium resources in the USA. Sandstone hosted ores have been mined in the region since 1904 and the mining region has historically produced in excess of **17.5Mt @ 2,400ppm U<sub>3</sub>O<sub>8</sub> (92 mlbs U<sub>3</sub>O<sub>8</sub>) and 12,500 ppm V<sub>2</sub>O<sub>5</sub> (482 mlbs V<sub>2</sub>O<sub>5</sub>)<sup>1</sup>.**



## NIAGARA (KOOKYNIIE) GOLD, WESTERN AUSTRALIA<sup>2</sup>

The Niagara project is located ~6 km southwest of Kookynie in the central goldfields of Western Australia. The project comprises one granted exploration licence, E40/342, and six granted prospecting licences, P40/1506, P40/1513, P40/1515, P40/1516, P40/1517 and P40/1518. Access to the project is provided via Goldfields Highway from the town of Menzies and the sealed Kookynie Road which bisects the northern part of exploration licence E40/342 & the southern part of P40/1506 (**Figure 5**). The project is located within the central part of the Norseman-Wiluna greenstone belt. GTI continues to evaluate its options for advancing exploration of the Niagara Gold Project & expects to advise of next steps with the project during the coming months whilst it prioritises exploration of its uranium projects.



<sup>1</sup> Geology and recognition criteria uranium deposits of the salt wash types, Colorado Plateau Province, Union Carbide Corp, 1981, page 33

<sup>2</sup> <https://www.asx.com.au/asx/statistics/displayAnnouncement.do?display=pdf&id=02401075>