

# Boadicea Resources Ltd



## Corporate Presentation AGM Presentation

---

12 NOVEMBER 2021

ASX: BOA

# DISCLAIMER

---

## Forward Looking Statements

This presentation is not an offer for financial products in any jurisdiction or a financial product recommendation. The information in this presentation is an overview and does not contain all information necessary for investment decisions. In making investment decisions in connection with any acquisition of financial products, investors should rely on their own examination of Boadicea Resources Ltd (“Boadicea” or the “Company”) and consult with their own legal, tax, business and/or financial advisers.

The information contained in this presentation has been prepared in good faith by the Company. However, no representation or warranty expressed or implied is made as to the accuracy, correctness, completeness or adequacy of any statements, estimates, opinions or other information contained in this presentation. To the maximum extent permitted by law, Boadicea, its directors, officers, employees and agents disclaim liability for any loss or damage which may be suffered by any person through the use or reliance on anything contained in or omitted in this presentation.

Certain information in this presentation refers to the intentions of Boadicea, but these are not intended to be forecasts, forward looking statements or statements about future matters for the purposes of the Corporations Act or any other applicable law. The occurrence of events in the future are subject to risks, uncertainties and other factors that may cause the Company’s actual results, performance or achievements to differ from those referred to in this presentation. Accordingly, Boadicea, its directors, officers, employees and agents do not give any assurance or guarantee that the occurrence of the events referred to in this presentation will actually occur as contemplated.

## Competent Persons Statements

The information in this presentation that relates to Exploration Results for the Western Australian based projects was compiled by Mr. G. Purcell and Mr J. Reynolds. Mr Purcell is a member of the Australian Institute of Geoscientists, and is a part time consultant and non executive director to Boadicea. Mr J. Reynolds, is the Managing Director of the Company and is a Member of the Australian Institute of Mining and Metallurgy (Membership number 203138). Mr. Purcell and Mr Reynolds have sufficient experience which is relevant to the style of mineralisation and type of deposit under consideration and to the activity being undertaken to qualify as a Competent Person as defined in the 2012 Edition of the ‘Australasian Code for Reporting of Exploration Results, Minerals Resources and Ore Reserves’. Mr. Purcell and Mr Reynolds consents to the inclusion in the Report of the matters based on the information in the form and context in which it appears.

The information in this release that relates to Geophysical Results is based on information compiled by Karen Gilgallon, Principal Geophysicist at Southern Geoscience Consultants. Karen Gilgallon is a Member of the Australasian Institute of Geoscientists (AIG) and has sufficient experience which is relevant to the style of mineralisation and type of deposit under consideration and to the activity which he is undertaking to qualify as a Competent Person as defined in the 2012 Edition of the ‘Australasian Code for Reporting of Exploration Results, Mineral Resources and Ore Reserves’. Karen Gilgallon consents to the inclusion in the release of the matters based on this information in the form and context in which it appears.

## ASX Listing Rule 5.23.2 Statement

The Company is not aware of any new information or data that materially affects the information included in the relevant market announcement(s) and, in the case of estimates of mineral resources or ore reserves, that all material assumptions and technical parameters underpinning the estimates in the relevant market announcement(s) continue to apply and have not materially changed.

# SET, READY, GROW

## SET

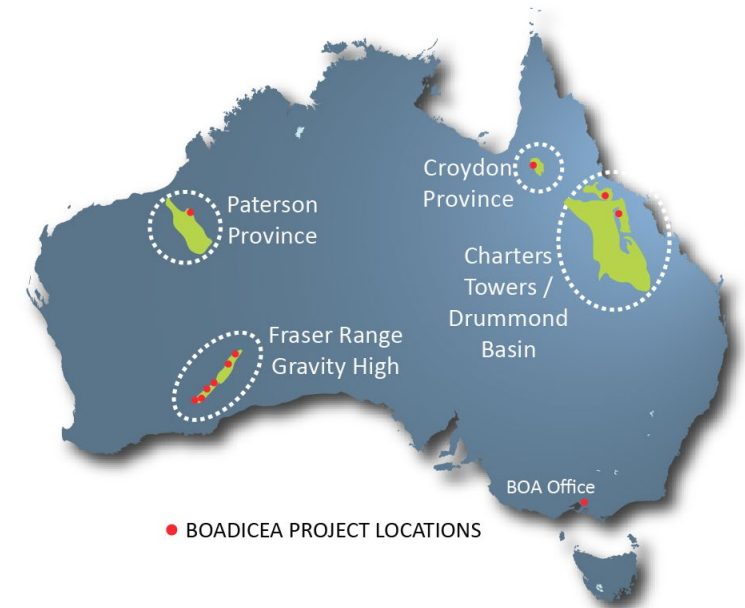
- ✓ BOA main projects are located in WA's Fraser Range (nickel); Paterson Province (gold/copper); and in Qld's Charters Towers / Drummond Basin region (gold); Croydon Province (lithium, gold, tin, tantalum potential).

## READY

- ✓ \$4.9m cash with increased share liquidity
- ✓ Potential \$50m payday (plus 0.75% NSR Royalty) - IGO - Fraser Range
- ✓ BOA exploration activity and footprint increasing – Fraser Range, Paterson Province, Drummond Basin and Croydon Province

## GROW

- ✓ Significant progress - IGO exploration of nine (9) BOA Fraser Range tenements
  - Orion and other intrusions on Symons Hill – “eye” feature on Transline
- ✓ Koongulla (Paterson Province) identified a ‘Telfer like’ dome structure
  - High priority target for gold / copper mineralisation
  - Land access agreed and additional tenement
- ✓ Qld Croydon Province - Lithium exploration with Hanns Gully application
- ✓ Qld Drummond Basin - Clarke Reward (granted) and Mt Carmel (application)
  - Attractive, unexplored for intrusive related gold



BOADICEA PROJECT LOCATIONS

# THE RIGHT GROWTH COMMODITIES

## EV METALS



### BOA's POSITION

- 11 Fraser Range licences
- 836km<sup>2</sup>
- Multiple Targets
- Free carried IGO exploration
- Potential \$50m payday (IGO)

### WHERE TO NEXT

- Highly exposed to EV growth
- Demand growth of 5.2x
- Current prices at 5 year highs

NICKEL price (US\$/t)



### BOA's POSITION

- Patterson Province
- 885km<sup>2</sup>
- Koongulla Dome – Telfer look-alike
- Exploring large scale Au-Cu

### WHERE TO NEXT

- Highly exposed to EV growth
- Demand growth of 5.5x
- Current prices at 5 year highs

COPPER price (US\$/t)



### BOA's POSITION

- 11 Fraser Range licences
- 836km<sup>2</sup>
- Free carried IGO exploration
- By-product of Ni exploration

### WHERE TO NEXT

- Highly exposed to EV growth
- Demand growth of 1.5x
- Supply constraints
- Possible supply deficit 2025
- Rarely experienced price dip

COBALT price (US\$/t)



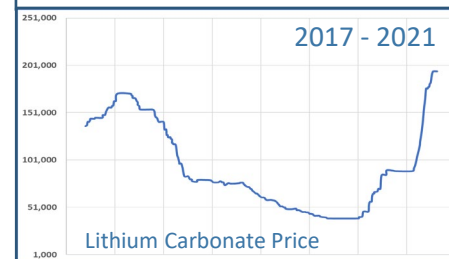
### BOA's POSITION

- Hanns Gully application
- 296km<sup>2</sup>
- Untested greisen lithium target
- Tin, gold, tantalum potential

### WHERE TO NEXT

- Highly exposed to EV growth
- Demand growth of 5.3x
- Large supply / demand gap forecast

LITHIUM price (US\$/t)



## GOLD



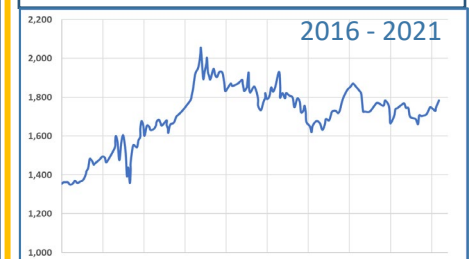
### BOA's POSITION

- Patterson Province (WA)
- Drummond Basin region (QLD)
- 1,216km<sup>2</sup> (incl. Cu Area)
- Multiple targets

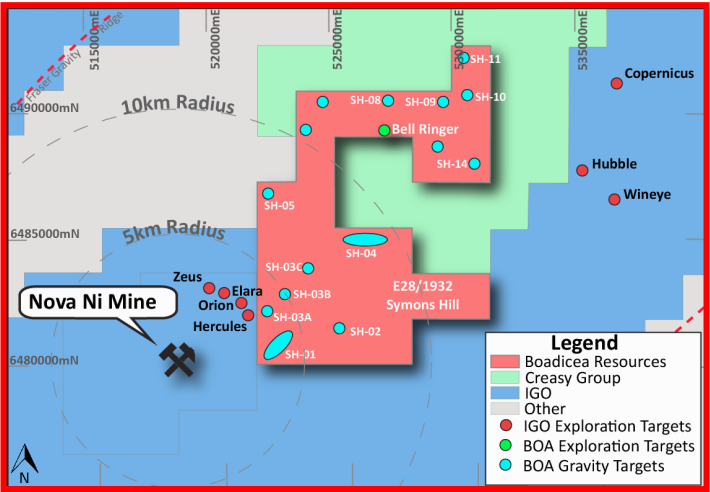
### WHERE TO NEXT

- Forecast price growth with inflationary concerns
- Wealth preservation role

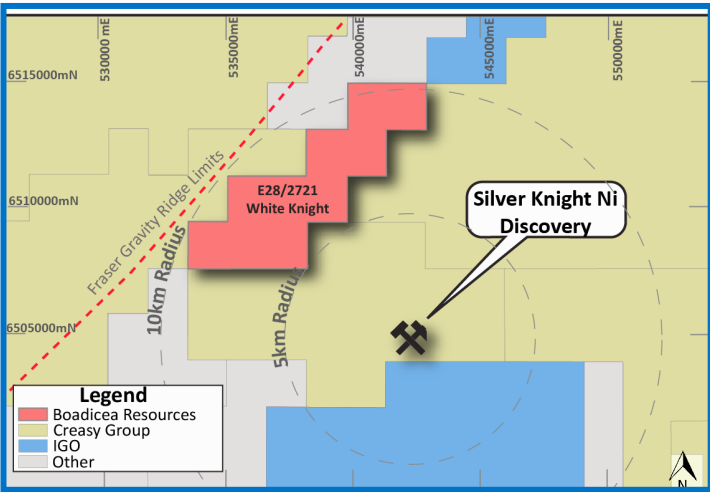
GOLD price (US\$/Oz)



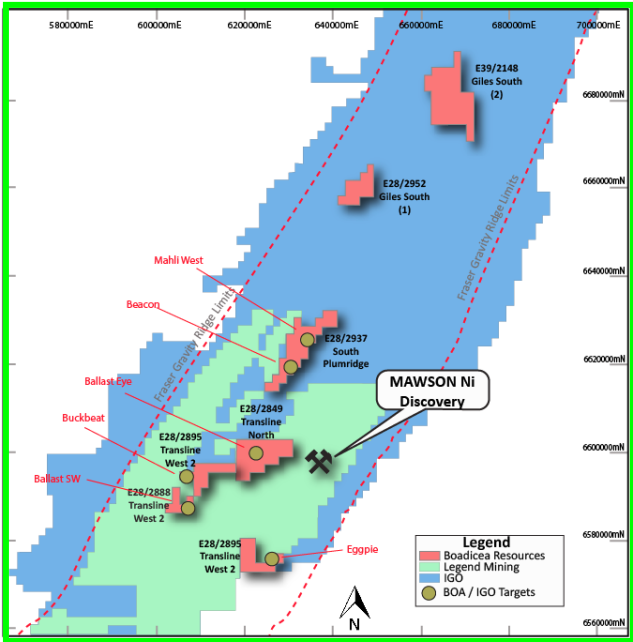
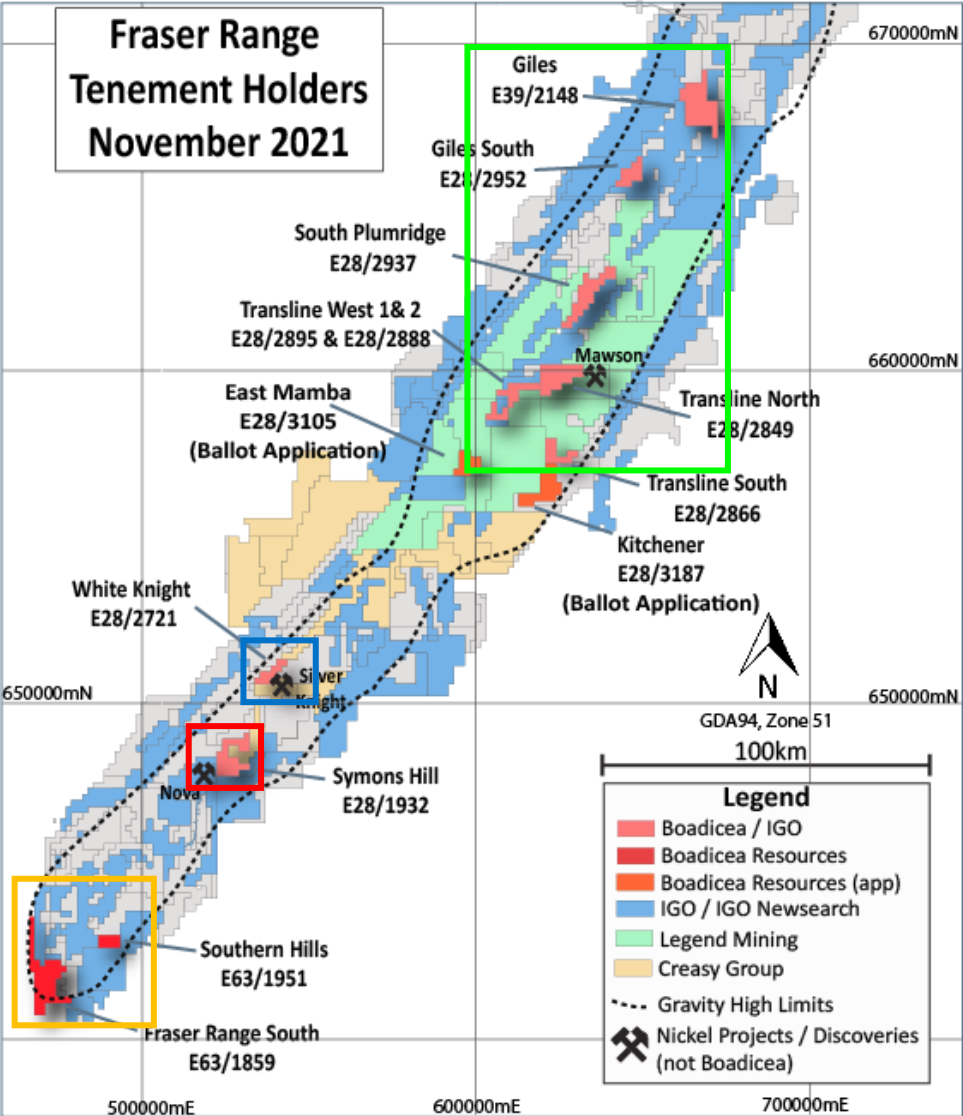
# FRASER RANGE



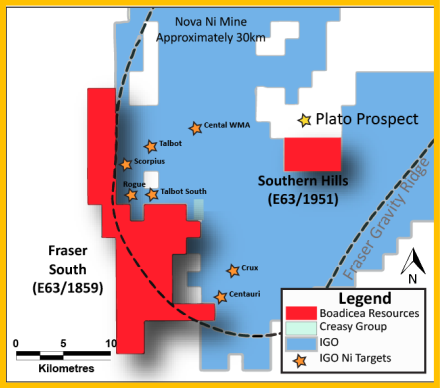
Symons Hill Location



White Knight Location



Transline Tenement Location



Southern Hills / Fraser South Location





# IGO – BOA AND FRASER RANGE

## Symons Hill (E28/1932)

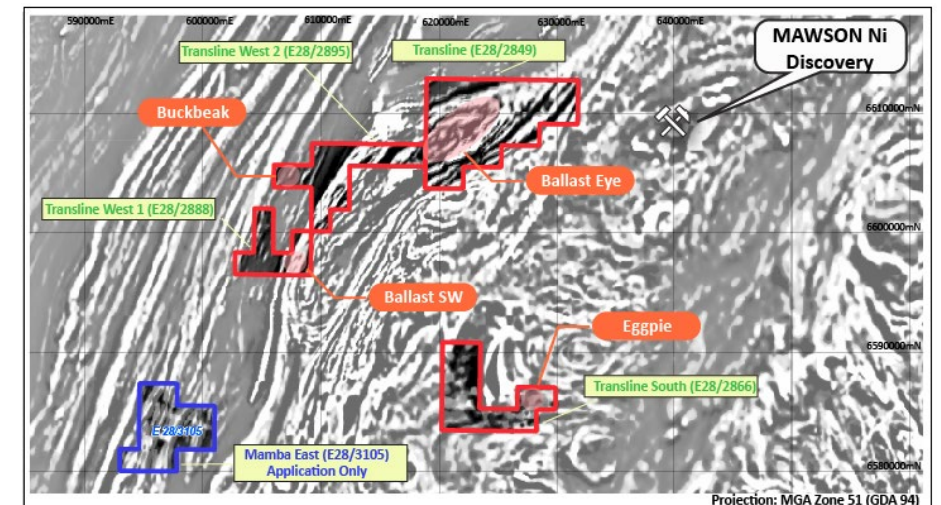
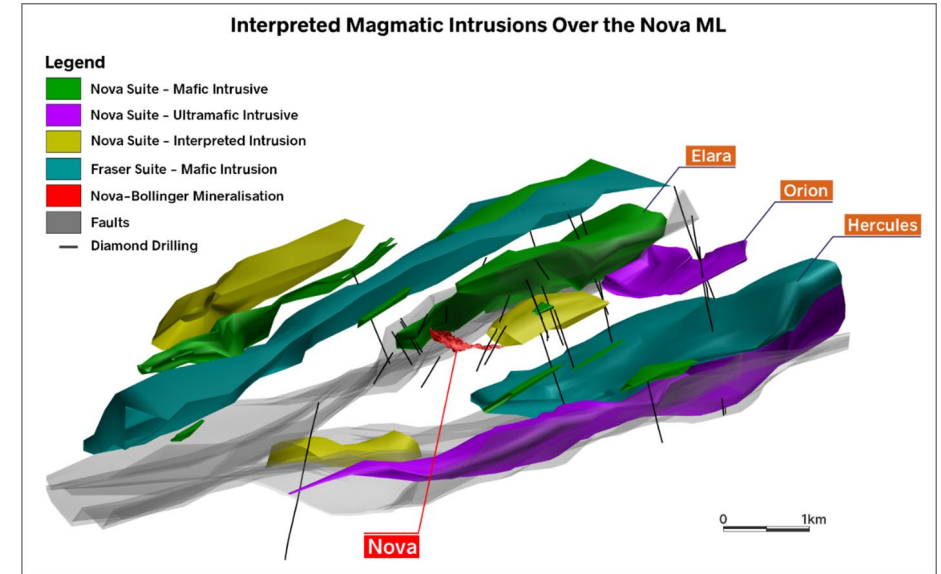
- Primary target the Orion intrusion (chonolith).
- First diamond drill hole completed to a depth of 809.4m (21AFDD104).
- Further Orion diamond drilling Q2 2022.
- Intersection of visually, good tenor pyrrhotite-chalcopyrite-pentlandite sulphides.
- Consistent with IGO's interpretation that the system is more prospective towards the northeast.

## Transline Group

- Nova-Bollinger has an elliptical, 'eye-shaped' expression in magnetic imagery
- IGO has identified an elliptical magnetic eye feature (Ballast Eye) on BOA's prospective E28/2849 (Transline) tenement near the Legend Mining "Mawson" discovery.
- Proposed Work Programs & Targets on the northern tenements (E28/2888, E28/2895, E28/2937, E28/2952, E28/2849, E28/2866, and E39/2148)

## South Plumridge

- Emperor North anomaly target (E28/2937).



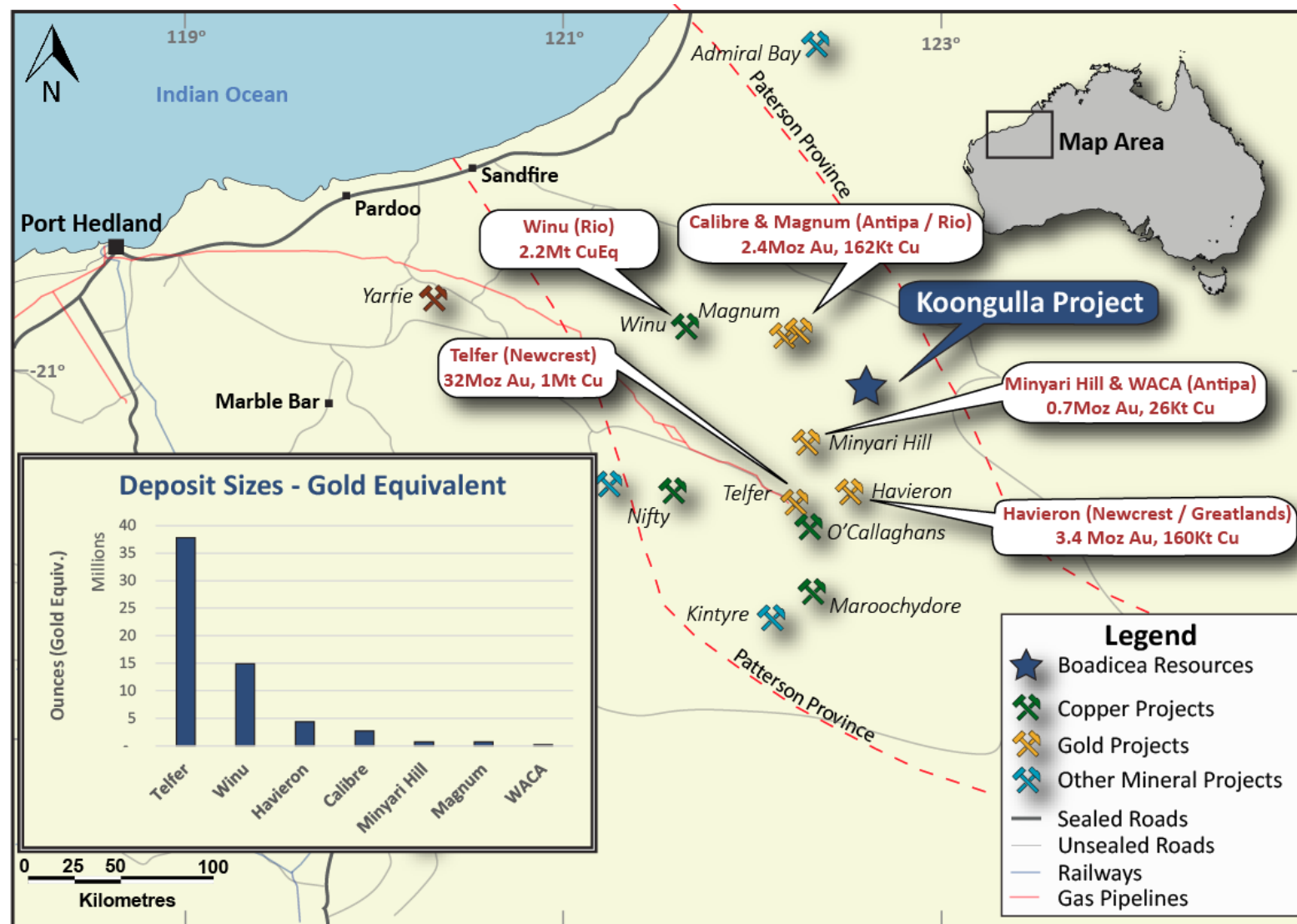
# PATERSON PROVINCE – KOONGULLA PROJECT

## Koongulla Project

Primary targeting is for dome features.

The province includes world class projects:

- **Telfer (Newcrest) mine: 32Moz Au, 1Mt Cu**
- Havieron (Newcrest and Greatlands): 3.4 Moz Au, 160Kt Cu
- Winu (Rio): 4.4Moz Au, 1.8Mt Cu, 35Moz Ag



Paterson Province Key Deposits and the Koongulla Project

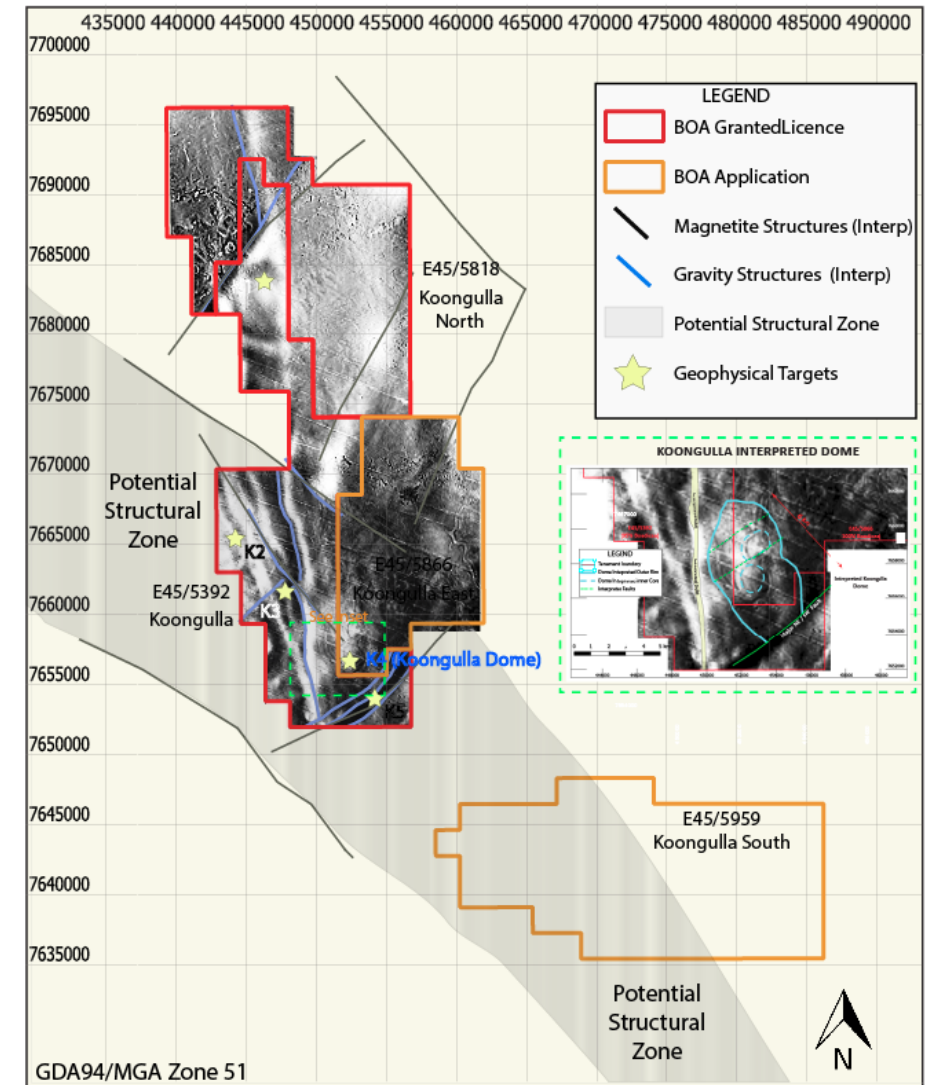
# PATERSON PROVINCE WA – A SIGNIFICANT PRESENCE

BOA has tenements that cover 885km<sup>2</sup> in the Paterson Province, as presented below.

Tenement #	Name	Status	BOA %	Area (km <sup>2</sup> )
E45/5392	Koongulla	Granted	95%	239.7
E45/5818	Koongulla North	Granted	100%	214.3
E45/5866	Koongulla East	Granted	100%	153.4
E45/5959	Koongulla South	Application	100%	277.6
TOTAL				885.0

Koongulla South (E45/5959) was applied for on 9 July 2021.

- Targeting potential for extension of an interpreted structural zone.



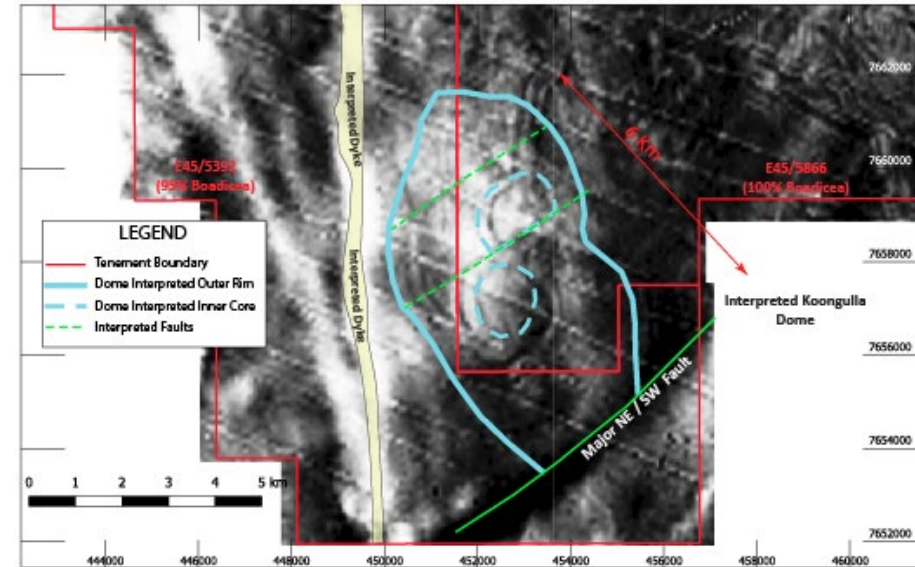
Koongulla Tenement Position and Exploration Targets



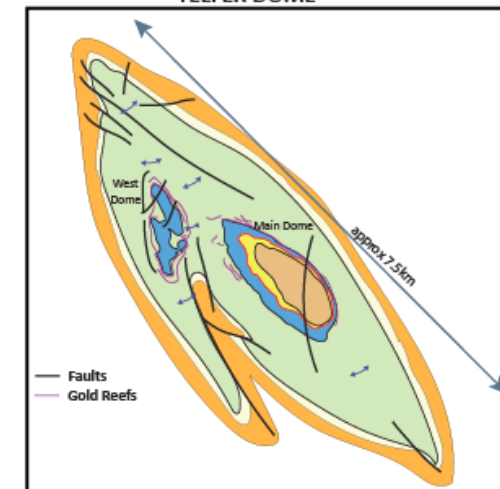
# KOONGULLA DOME - PRIMARY EXPLORATION TARGET

BOA's "Koongulla" project – potential company maker

- Geophysics has identified an interpreted dome structure.
- The Koongulla Dome feature straddles Koongulla and Koongulla East tenements (E45/5392 and E45/5866).
- BOA will focus on exploration of the Telfer-look-a-like dome feature.
- Significantly, several deposits in the Paterson Province are associated with known dome structures, including the world class Telfer mine.
- The broad dimensions of the Koongulla Dome are similar to those of Telfer, being 7.5 km long and 3 km wide with its long axis, oriented NW.
- Preliminary depth to basement indications are approximately 200 - 250m - BOA can drill.
- Air-mag survey now completed over Koongulla Dome, with further complexity and structural domes identified.

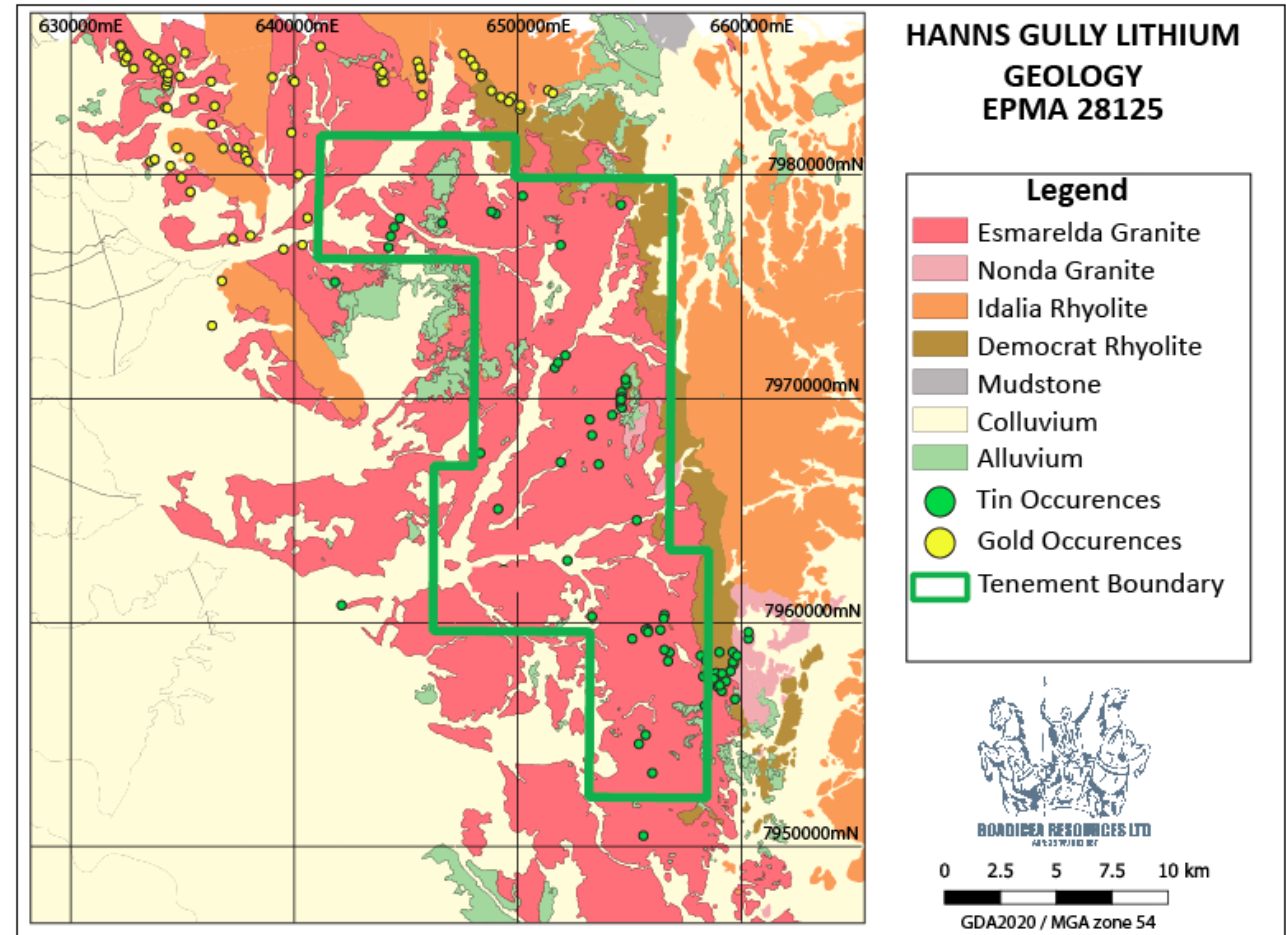


Koongulla Dome Aero Mag Survey Results and interpretation



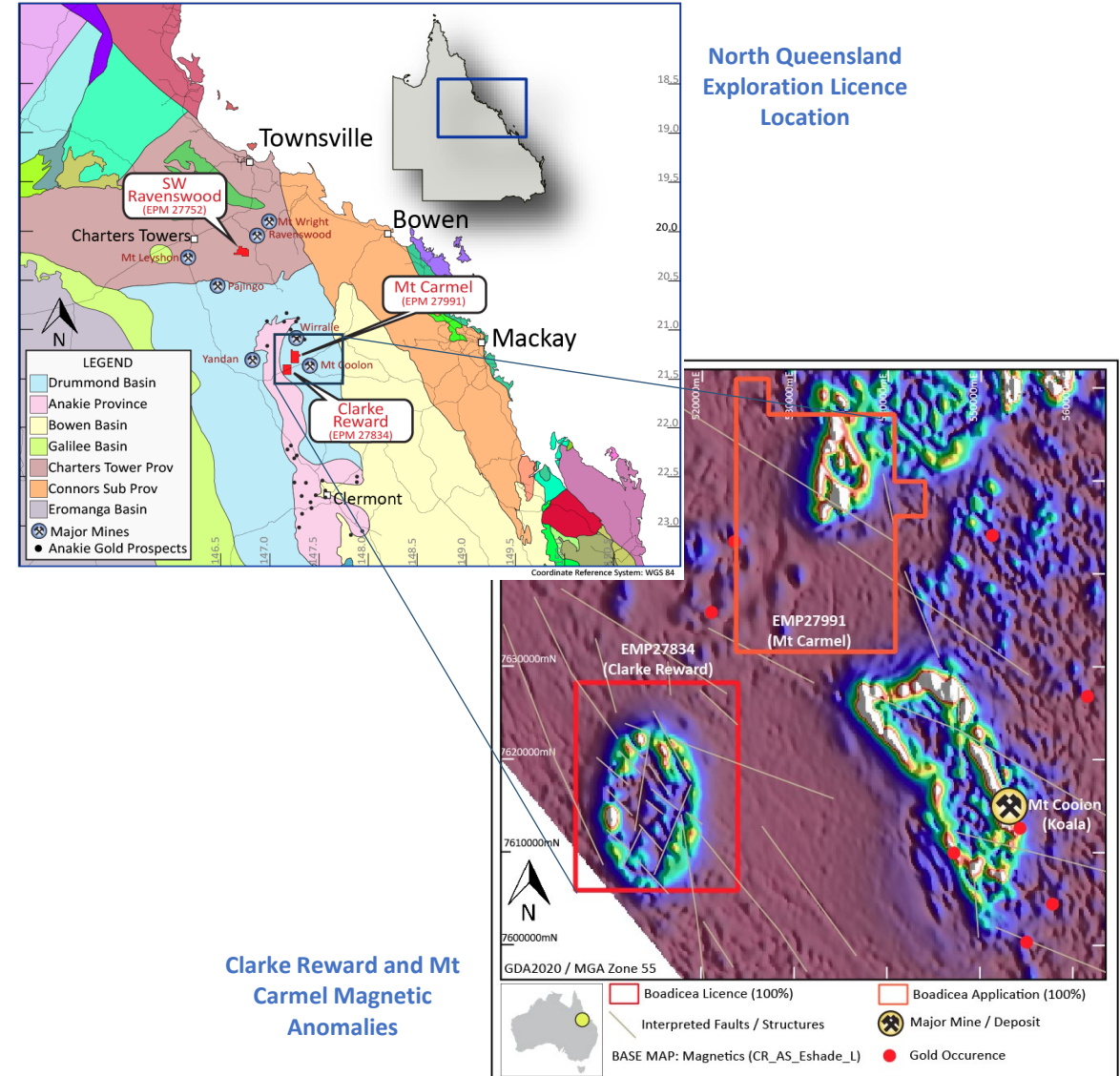
# HANNS GULLY LITHIUM

- Application for Hanns Gully tenement (EPMA28125) in Queensland adds new lithium focus in Boadicea's portfolio.
- Low-cost entry gives Boadicea excellent upside in new lithium discovery project in Australia.
- Hanns Gully is located in the Croydon district of North Queensland, an area historically mined for tin with 58 known occurrences within the tenement boundary.
- Targeting greisen style igneous lithium deposits that are strongly associated with tin.
- Total area of 296km<sup>2</sup>.
- BOA exploration strategy now fully committed to four (4) of the key electric vehicle (EV) metals - copper, nickel, cobalt, lithium.
- Tenement has additional exploration potential for gold, tin, tungsten and tantalum mineralisation.



# DRUMMOND BASIN (QLD) – CLARKE REWARD / MT CARMEL

- Drummond Basin known gold endowment is in excess of 7.5m ounces.
- Clarke Reward granted 12 July 2021 (EPM 27834).
- 96km<sup>2</sup> of a highly anomalous magnetic feature in a structural position at the margin of the Drummond Basin and the Anakie Metamorphic complex.
- The target does not outcrop and the source of anomalism has not been confirmed by drilling.
- Proximal to the Mt Coolon epithermal mine (>1Moz).
- Prospective for Drummond Basin style epithermal gold, other intrusive-related mineralisation systems.
- Never been tested by any modern exploration.
- Exploration agreement entered with Bulganunna Aboriginal Corporation, providing BOA with land access.
- Proposed drill commencing Q2 2022.
- Mt Carmel application (EPMA 27991) August 2021.



# COMPANY OVERVIEW

<u>Capital Structure</u>	Current
Shares on Issue	77.7m
Listed 2023 Options	19.6m
Market Cap. (@ A\$0.20) (10/11/2021)	A\$15.5m
Fully Diluted (BOAR @ A\$0.029)	A\$16.1m
Top 20 Shareholders	58.98%
Total Number of shareholders	868
Cash (30/09/2021)	A\$4.9m

## Board & Management

Jonathan Reynolds (B.ASc., MAusIMM)  
 Domenic De Marco (CA)  
 Steven Moon (B.Ec., LLB<sup>1</sup>)  
 Graeme Purcell (B.Sc. Hons)  
 James Barrie (B. Bus, GAICD, DipInvRel)

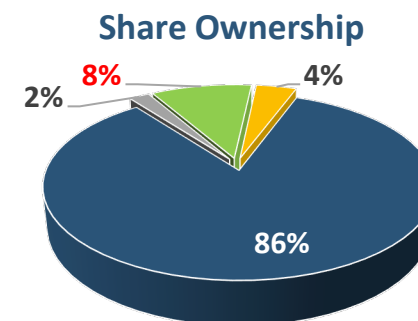
Managing Director  
 Non - Executive Director  
 Executive Director  
 Non - Executive Director  
 Company Secretary

## Technical Consultants

Karen Gilgallon (B.Sc.)  
 Graeme Purcell (B.Sc. Hons)

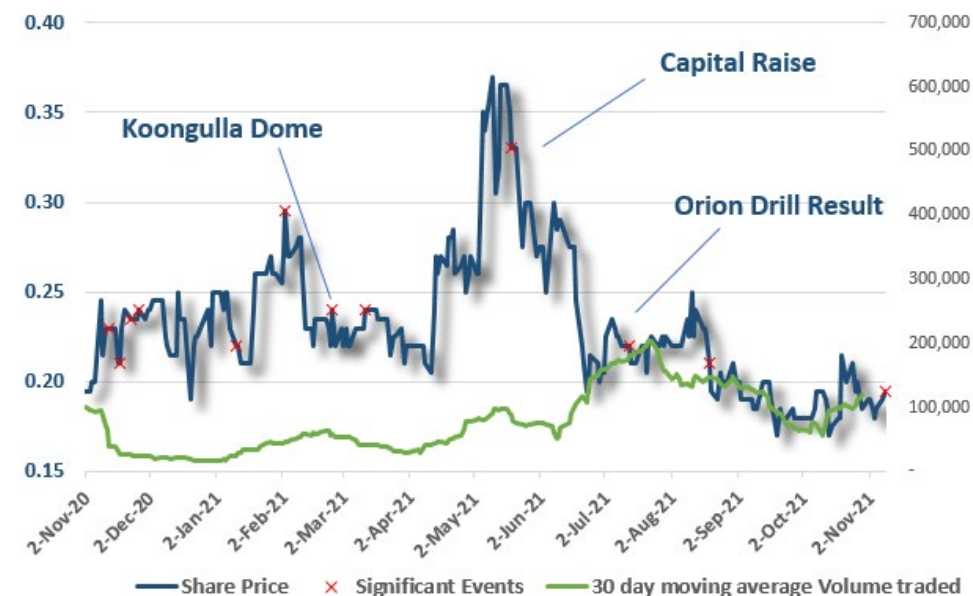
Consultant Geophysicist  
 Consulting Geologist

<sup>1</sup> Additional Qualifications: Grad.Dip.Acc., CPA(FPS), GDipAppFin, F.Fin., Dip.F.P



■ Management / Consultants ■ Retail ■ Directors ■ IGO

## 12 Month Share Price



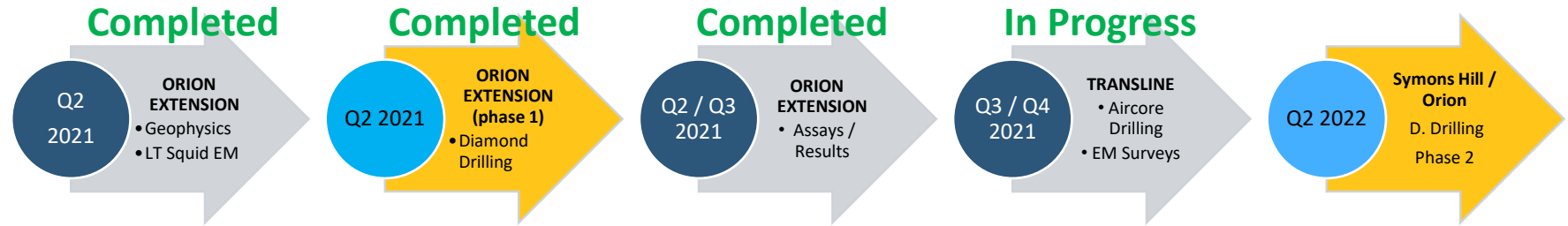


# CORE EXPLORATION PROGRAM – BOA TENEMENTS

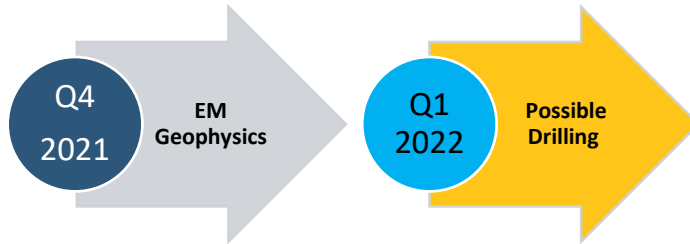
## Western Australia

### SYMONS HILL & TRANSLINE

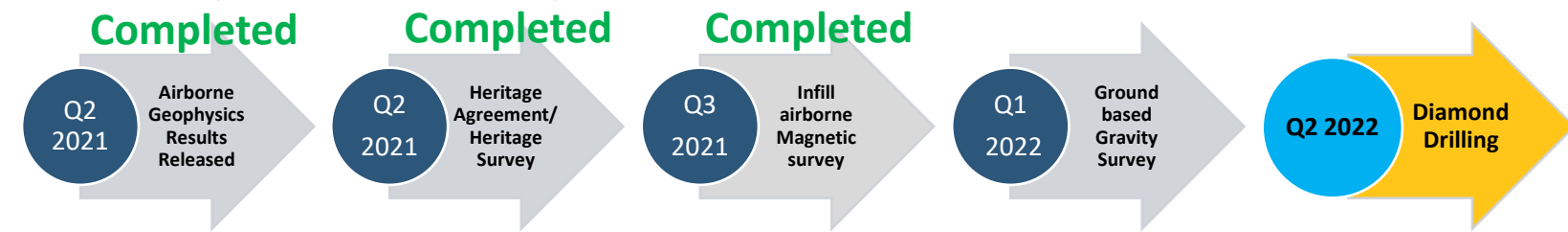
Managed and Funded by IGO



### SOUTHERN HILLS

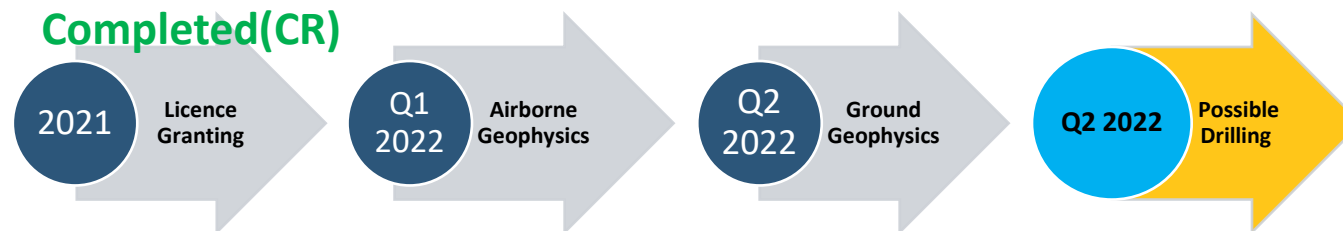


### KOONGULLA



## Queensland

### CLARKE REWARD (CR) MT CARMEL



### Hanns Gully Lithium

Ground based exploration in 2022



# WHY INVEST IN BOADICEA?





**FOR MORE INFORMATION PLEASE CONTACT**

**MR JON REYNOLDS  
MANAGING DIRECTOR  
+61 (0)409 858 053**

---

[info@boadicea.net.au](mailto:info@boadicea.net.au)

<http://www.boadicea.net.au>