



TREK
METALS LIMITED

ASX Investor
Copper Investor Day
Presentation

23 November 2021

ASX: TKM

www.trekmetals.com.au



EMERGING BASE METAL DISCOVERY

WORLD CLASS LOCATION

LEVERAGED TO
SUCCESS





Forward Looking Statement Disclaimer

Statements regarding plans with respect to the Company's mineral properties are forward looking statements. There can be no assurance that the Company's plans for development of its mineral properties will proceed as expected. There can be no assurance that the Company will be able to confirm the presence of mineral deposits, that any mineralisation will prove to be economic or that a mine will successfully be developed on any of the Company's mineral properties.

This document and all other information (whether in writing or otherwise) which may be made available, or part thereof does not:

1. Contain all information that investors and their professional advisers would require to make an informed assessment of the following:

- a) assets and liabilities, financial position and performance, profits and losses and prospects of the Company; and
- b) rights and liabilities attaching to the Company's securities.

Constitute, or form part of, any offer to sell or issue, or any solicitation of an offer to purchase or subscribe for any securities nor shall this document, or any part of it, or the fact of its distribution or transmission, form the basis of, or be relied on, in connection with any contract.

Constitute a promise or representation as to the future. Recipients must make their own investigations and inquiries regarding all assumptions, risks, uncertainties and contingencies which may affect the future operations of the Company or the Company's securities.

No representation or warranty, express or implied, is made or given by or on behalf of the Company, its directors and officers or any other person as to the accuracy, completeness or fairness of the information or opinions contained in this document and all other information (whether in writing or otherwise) which may be made available or part thereof or any further information supplied by or on behalf of the Company or in connection with the Company and no responsibility or liability is accepted for any such information or opinions.

All statements in this document (other than statements of historical fact) are forward looking statements that involve risks and uncertainties. The Company can give no assurance that statements will prove accurate and results and future events could differ materially.

The Company, its directors and officers or any other person:

Do not accept liability for any loss or damage suffered or incurred by any investor or any other person however caused (including negligence) relating in any way to this document, including (without limitation) the information contained in it, any errors or omissions however caused, or the investor or any other person placing any reliance on this document, its accuracy, completeness, currency or reliability.

Do not accept any responsibility to inform the recipient or any other person of any matter arising or coming to its notice which may affect any matter referred to in this document.

To the maximum extent permitted by law, expressly disclaimed and excluded any liability of the Company, its directors and officers or any other person to the recipient or to any other person arising out of this document.

Competent Person Statement

The information in this announcement relating to Exploration Results and Mineral Resources is based on information compiled by the Company's Chief Executive Officer, Mr Derek Marshall, a competent person, who is a Member of the Australian Institute of Geoscientists. Mr Marshall has sufficient experience relevant to the style of mineralisation and to the type of activity described to qualify as a competent person as defined in the 2012 Edition of the "Australasian Code for Reporting of Exploration Results, Mineral Resources and Ore Reserves." Mr Marshall consents to the inclusion in this announcement of the matters based on his information in the form and content in which it appears.



Snapshot of Trek Metals

Corporate Structure

ASX Code	TKM
Shares on Issue	292.6 M
Share Price	A\$0.120
Market Capitalisation	A\$35.1m
Top 20 Shareholders	40%
Board and Management	11%
Cash at 22 November 2021	5.7 M

Board of Directors

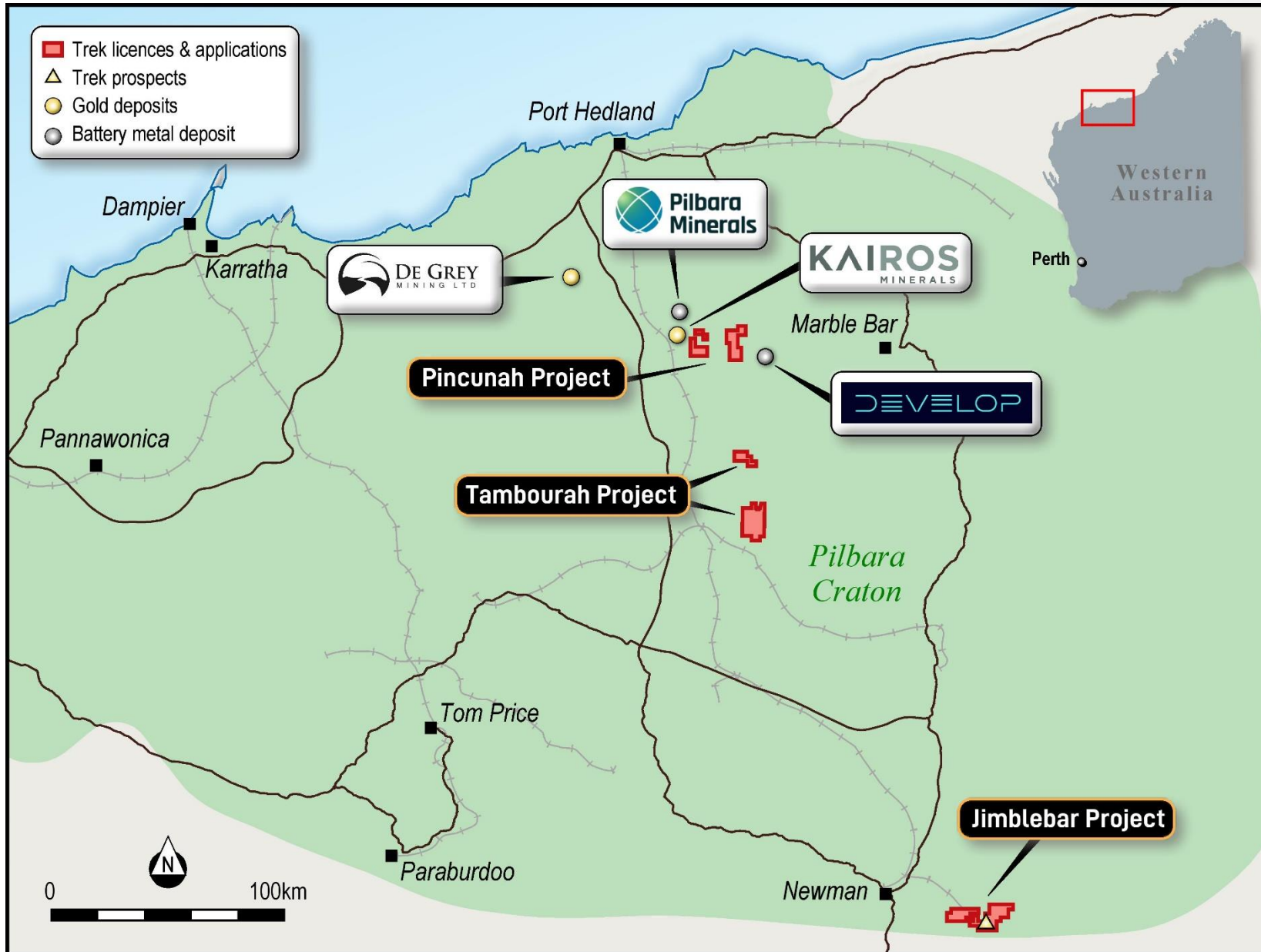
Tony Leibowitz	Non-Executive Chairman
John Young	Executive Director
Neil Biddle	Non-Executive Director

Management Team

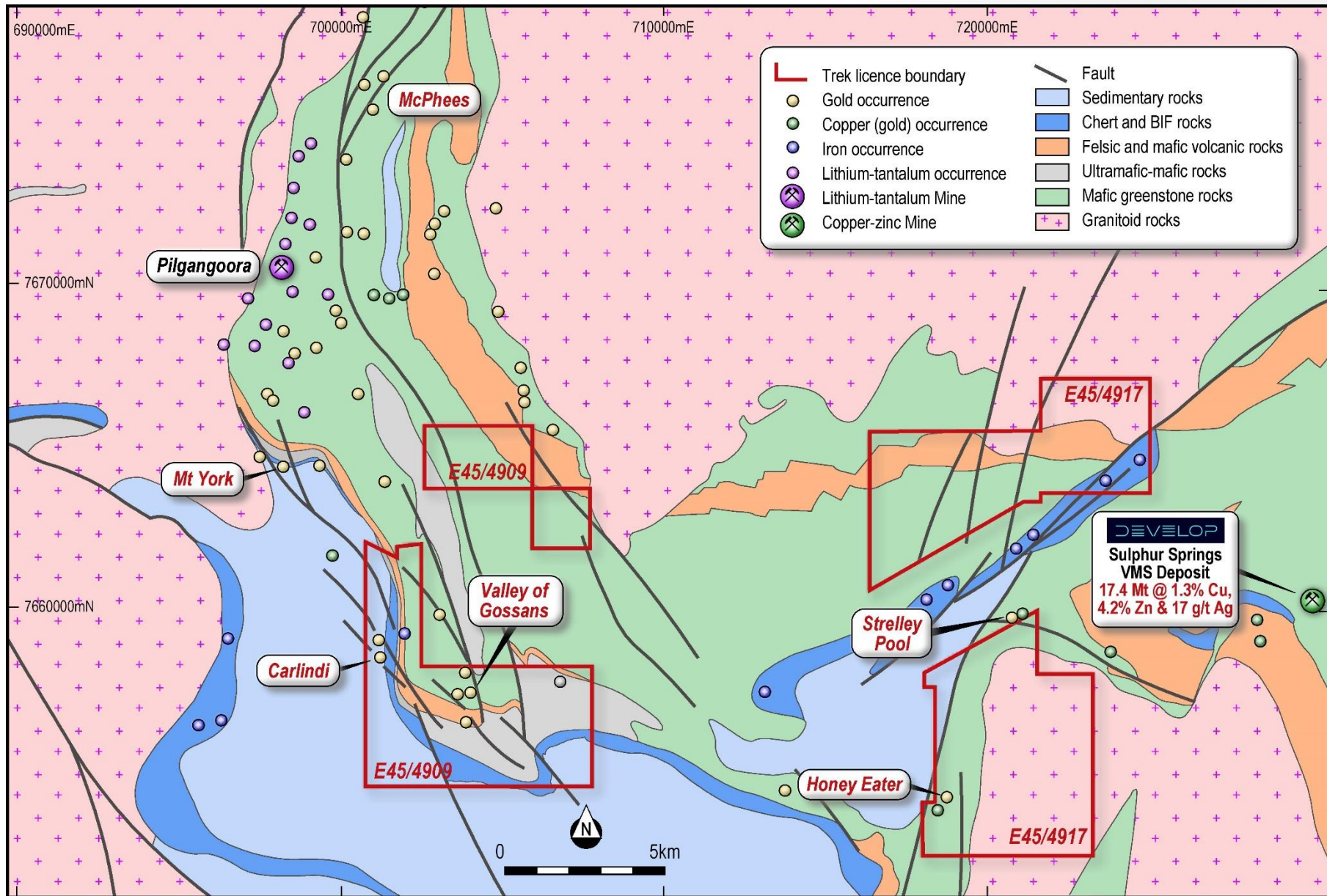
Derek Marshall	Chief Executive Officer
Russell Hardwick	CFO/Company Secretary



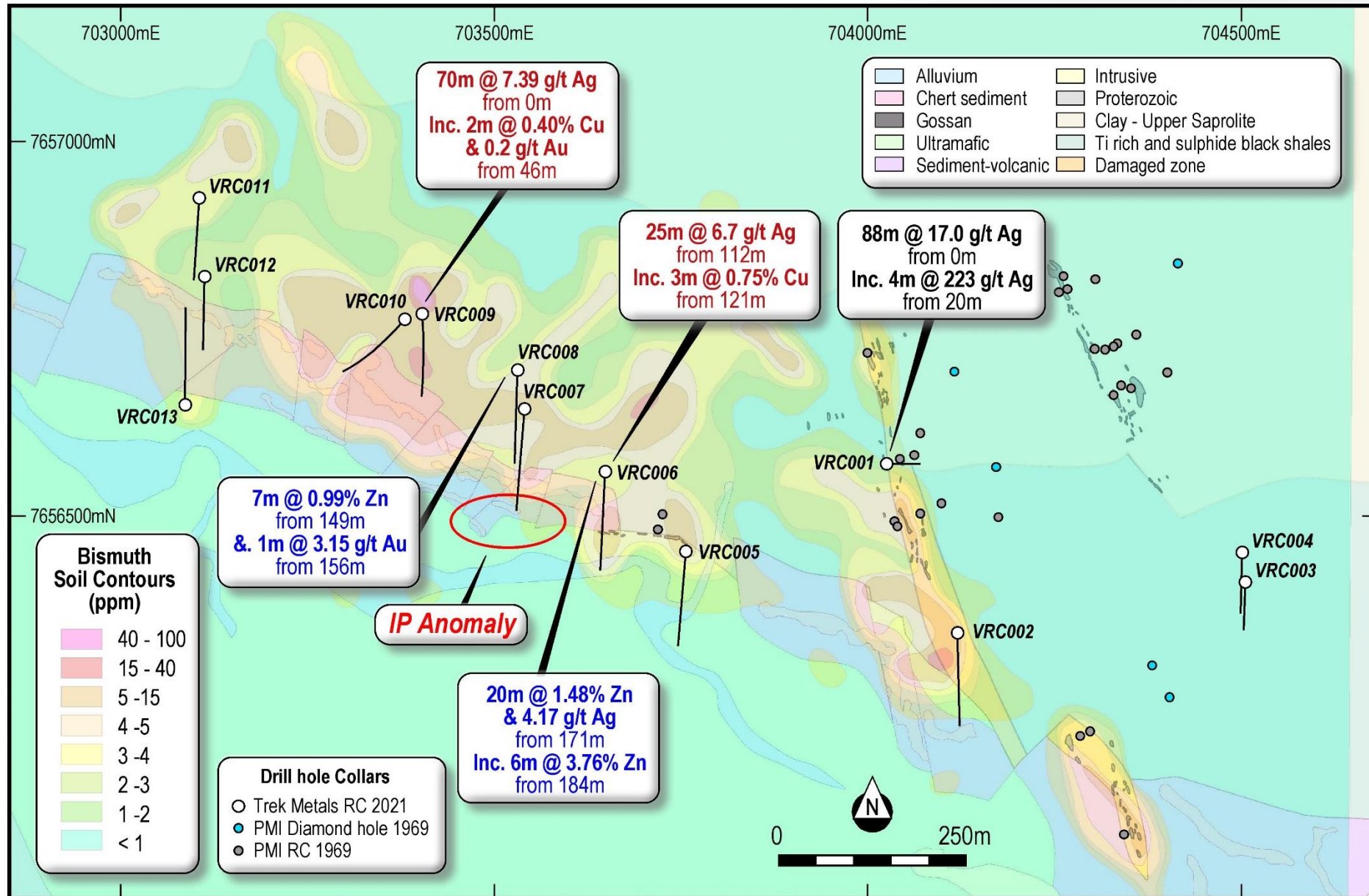
Pilbara Focused Explorer



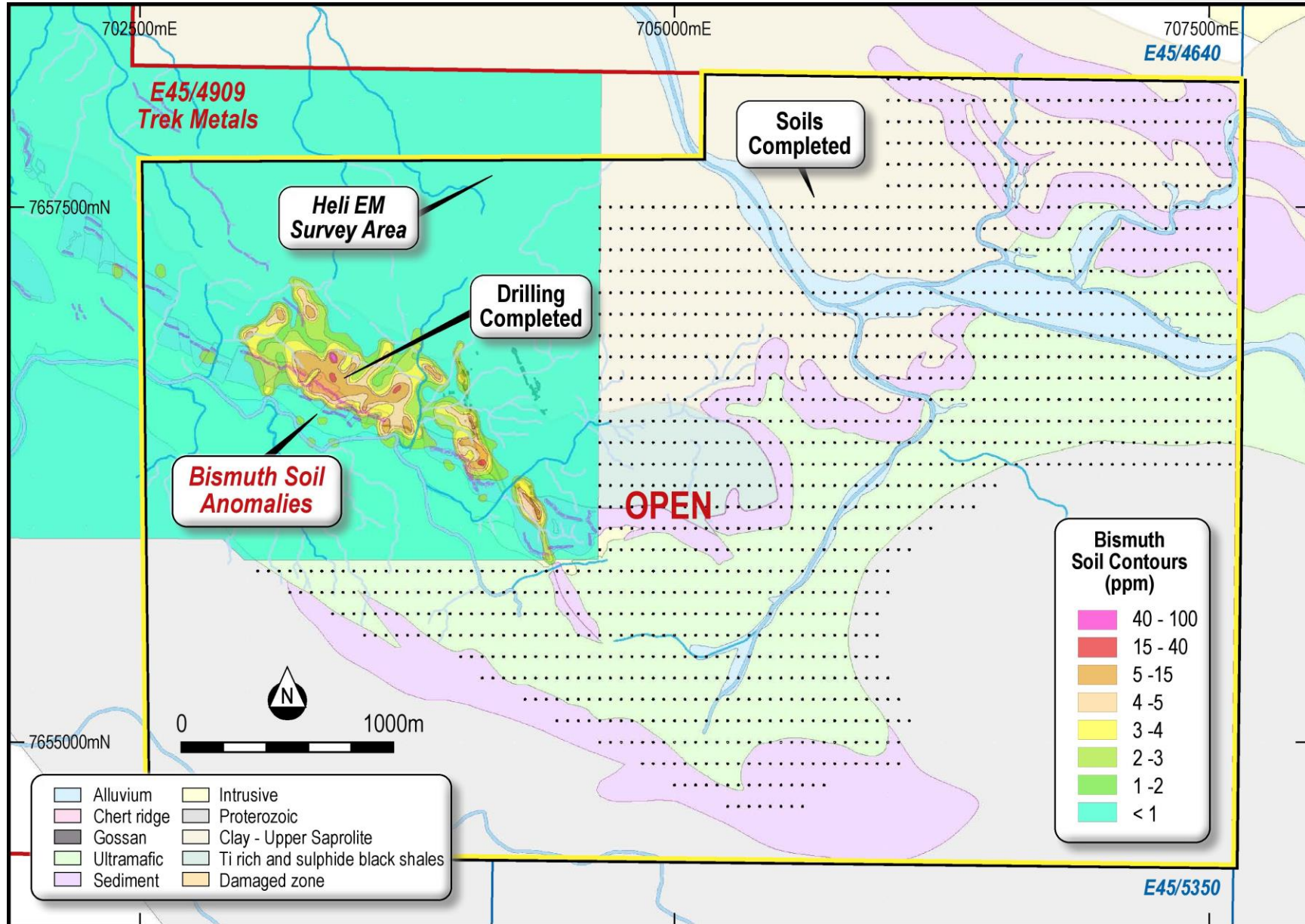
Pincunah Project



Valley of the Gossans - Emerging Discovery



Vectoring In



Vectoring In

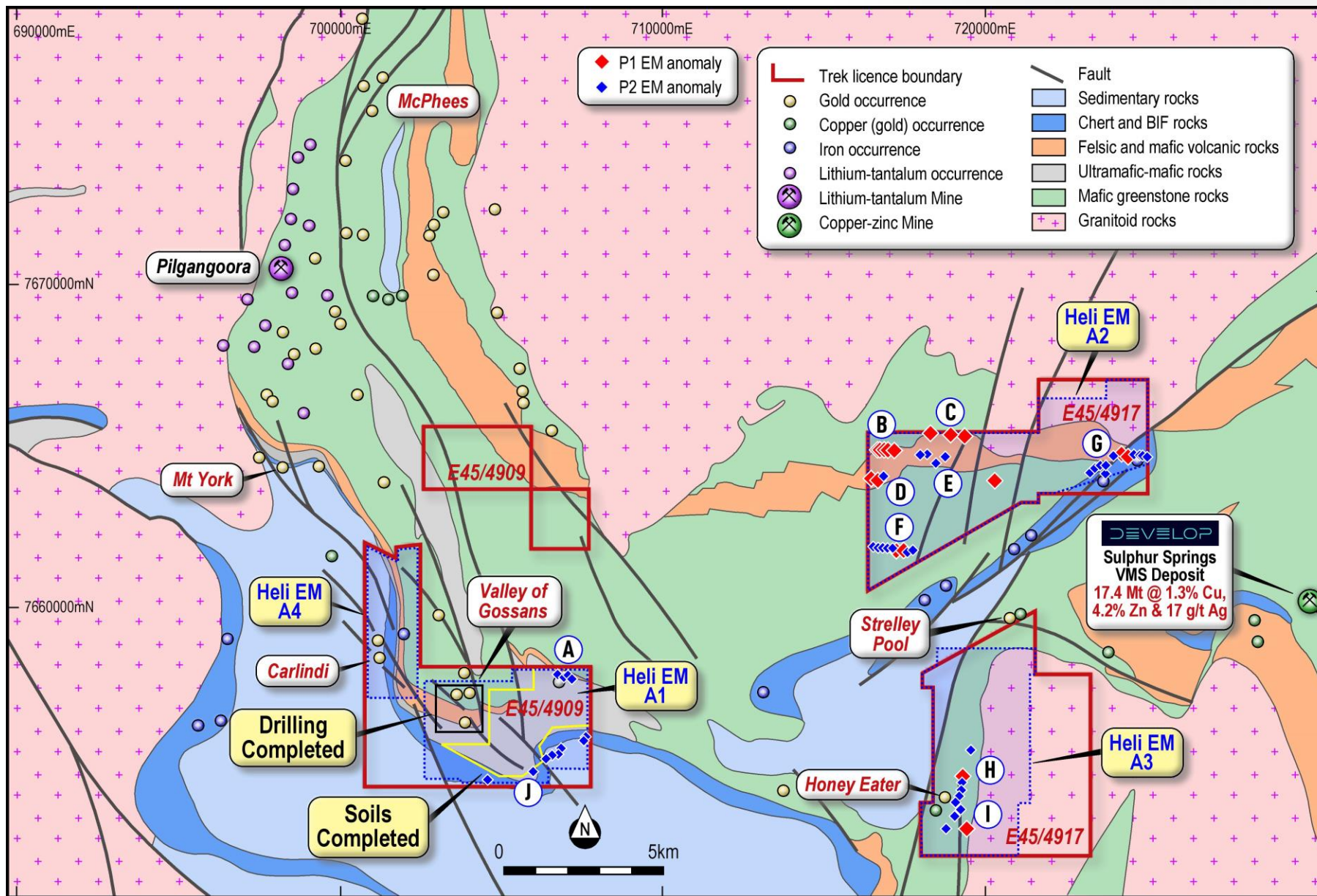


Helicopter EM @ Pincunah November 2021

Maiden EM @ VOG & Honeyeater



Vectoring In





Next Steps



Surface geochemical sampling
@ Valley of the Gossans November 2021
Samples submitted for analysis

Field reconnaissance @ Pincunah November 2021
Rank targets & design future work programs



Next Steps



RC Drilling @ Valley of Gossans November 2021
Samples submitted for analysis

Downhole EM scheduled for December 2021
Target generation for next round of drilling



Summary

- **VMS base metal discovery at Valley of the Gossans & new targets across belt**
- **Passionate, experienced, well supported team, focused on discovery**
- **Highly leveraged to exploration success**



TREK
METALS LIMITED

For more information please contact

Derek Marshall
Chief Executive Officer
0401 671 344

ASX: TKM

www.trekmetals.com.au



EMERGING BASE METAL DISCOVERY

WORLD CLASS LOCATION

LEVERAGED TO
SUCCESS