



Advancing the Earraheedy Zinc-Lead-Silver Sulphide Discovery

121 Mining Investment Online Conference EMEA – 23rd to 25th November 2021

Pipeline of Projects Strategy Delivers Earraheedy Zn-Pb-Ag Sulphide Discovery



Strategic pipeline of projects

- Clear strategy to drill test a pipeline of projects providing multiple avenues to world class discoveries
- Rumble and JV partners currently advancing a portfolio of 8 projects in Tier 1 Regions across Western Australia

Experienced management team and board

- Led by Managing Director Shane Sikora, +15 years company management and corporate experience
- Technical Director Brett Keillor awarded AMEC 'Prospector of the Year' twice for Tropicana and Plutonic discoveries
- Recent board & management additions have significantly bolstered discovery & development expertise

Primarily focussed on rapidly advancing a major discovery at Earraheedy

- **Major Zinc-Lead-Silver sulphide discovery** made at Chinook prospect, 110km north of Wiluna
- **Initial 40,000m RC and Diamond follow-up drill program** nearing completion
- Results from the first 9000m have **extended the mineralisation footprint by 224% to 4.1km x by 1.9km**, with mineralisation open in all directions
- Increased **exploration target*** to 100-120Mt (3.5% -4.5% Zn-Pb Sulphide) – flat lying open pittable depth
- Current focus is **scoping the extent of mineralisation** before **targeting near surface inferred high-grade feeder structures**

Fully funded

- Cash of ~\$33.7 million (as at 30 September 21) no debt
- **Fully funded through expansive 2021 drilling program**

Near term catalysts

- Ongoing drilling results at Earraheedy – 35,000m completed with only 9,000m assays received – **assays pending - 2H 2021**
- Drilling at Munarra Gully & Lamil Projects completed – **assays pending – 2H 2021**



* Refer page [15] for further details on the Exploration Target. The potential quantity and grade of the Exploration Target is conceptual in nature. There has been insufficient exploration to estimate a Mineral Resource and it is uncertain if further exploration will result in the estimation of a Mineral Resource

Corporate Overview



Capital Structure (ASX:RTR)

Shares On Issue	(m)	620.2
Unlisted Options ^{1,2,3}	(m)	24.0
Market Capitalisation ⁴	(A\$m)	279
Cash (30 September 2021)	(A\$m)	~33.7
Debt	(A\$m)	Nil

1. 5.9mil 15c Options (Various Expiry)
2. 3.25m 58c Options
3. 15mil Performance Options Vesting 20c, 30c, 40c, 50c, \$1 & \$2
4. As at [9 November 2021]

Shareholders

Board and Management	9%
Top 20	31%

Share Price Performance



Board and Management

Shane Sikora	Managing Director
Brett Keillor	Technical Director
Matthew Banks	Non-Executive Director
Michael Smith	Non-Executive Director
Peter Venn	Non-Executive Director
Steven Wood	Company Secretary

Experienced Board and Management



Board

Shane Sikora, Managing Director

- Founding member of Rumble.
- Appointed Managing Director in 2015.
- Over 15 years corporate experience in business development, strategic planning and project management.

Brett Keillor, Technical Director

- Geologist with over 30 years' experience in the mining industry.
- Worked with Resolute Mining Ltd, recently Chief Geologist (Gold) for Independence Group NL.
- Twice recipient of the AMEC Award "Prospector Of The Year" for the Plutonic - Marymia and Tropicana discoveries.

Matthew Banks Non-Executive Director

- Approximately 10 years specialising in marketing, public relations and corporate finance.
- Executive director of Wildcat Resources (ASX: WC8).

Michael Smith Non-Executive Director

- Chartered Accountant with over 25 years experience.
- Fellow of the Taxation Institute of Australia, member of ICAA's Forensic Accounting Special Interest Group.
- Previously Chief Executive of a division of a publicly listed national financial services consolidator.

Peter Venn Non-Executive Director

- Geologist with more than 30 years experience.
- Developed and lead teams to develop +10 mining operations across Africa and Australia.
- Previously Managing Director of Margosa Graphite Limited and Chief BD Officer at Resolute Mining Limited.

Senior Management

Steven Wood Company Secretary / CFO

- Over 10 years experience in corporate advisory, company secretarial and financial management Chartered Accountant, with experience in providing company secretarial and financial management services to both ASX and unlisted public and private companies.

Mark Carder GM Operations

- Geologist with over 19 years' experience in mining a broad range of commodities.
- Held senior geological roles with Crescent Gold, BC Iron, Carrick Gold, Millennium Minerals and Lynas Corporation.
- Specialises in resource modelling and economic assessment.

Ben Jones Chief Geologist

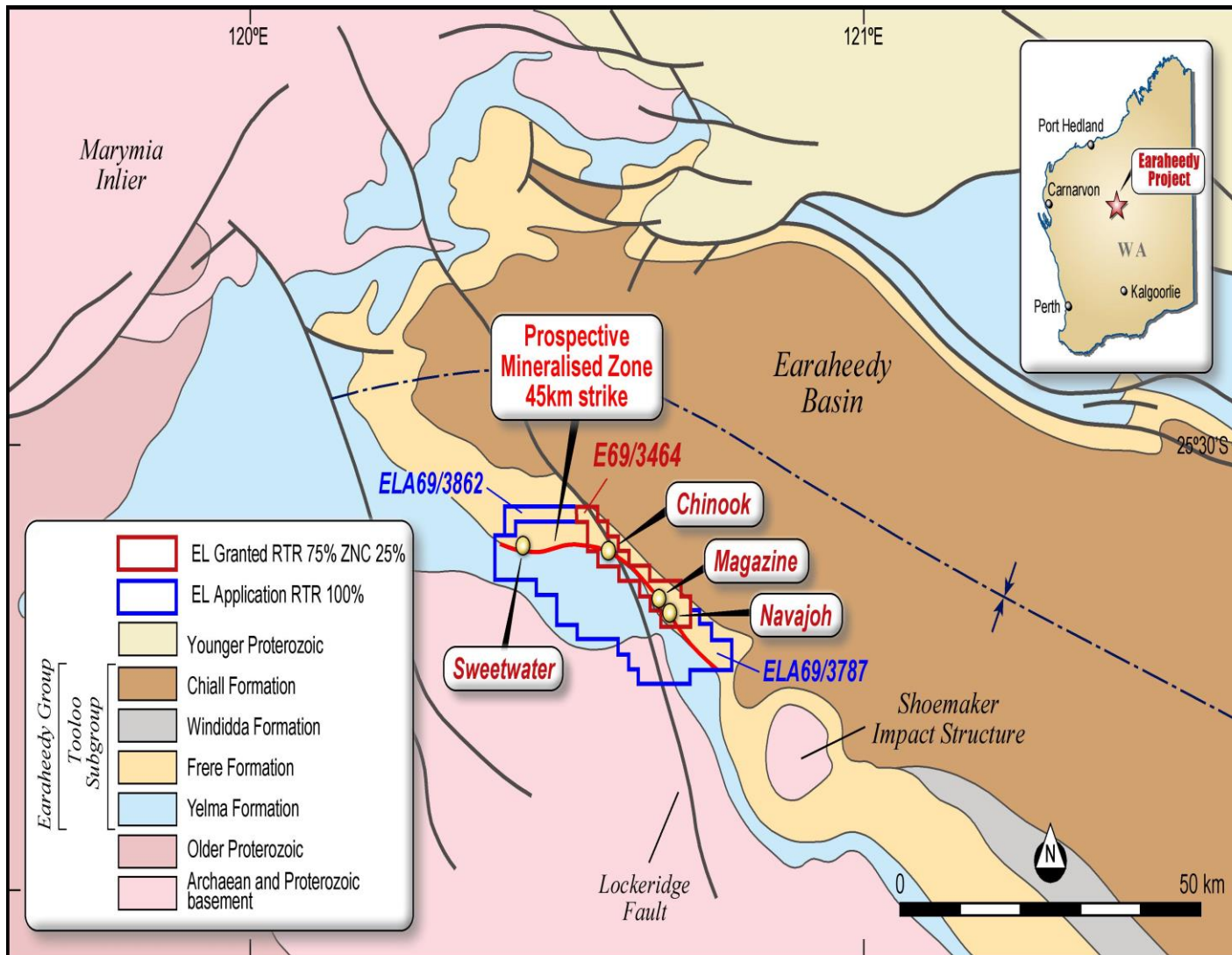
- Highly experienced technical geologist with over 20 years experience in gold and base metal deposits in Australia.
- Previously consulted to Evolution Mining, senior management positions at Independence Group, Jabiru Metals Ltd and AngloGold Ashanti.
- Oversaw the re-interpretation and successful definition of over 1Moz of gold as part of the Sunrise Dam Gold Mine Underground Feasibility Study, delivered the Tropicana Gold Deposit Pre-Feasibility Study (now over 7Moz) in Western Australia, and completed the Stockman Cu-Pb-Zn deposit Pre-Feasibility Study in Eastern Victoria.

Luke Timmermans Project Manager, Earaheedy

- Geologist with over 10 years' experience spanning a broad range of commodities.
- Senior roles with Gold Fields, Red 5 and Essential Metals.
- Involved with the re-discovery and development of the King of the Hills gold deposit as a bulk mining operation.

Earaheedy Zn-Pb-Ag Sulphide Discovery

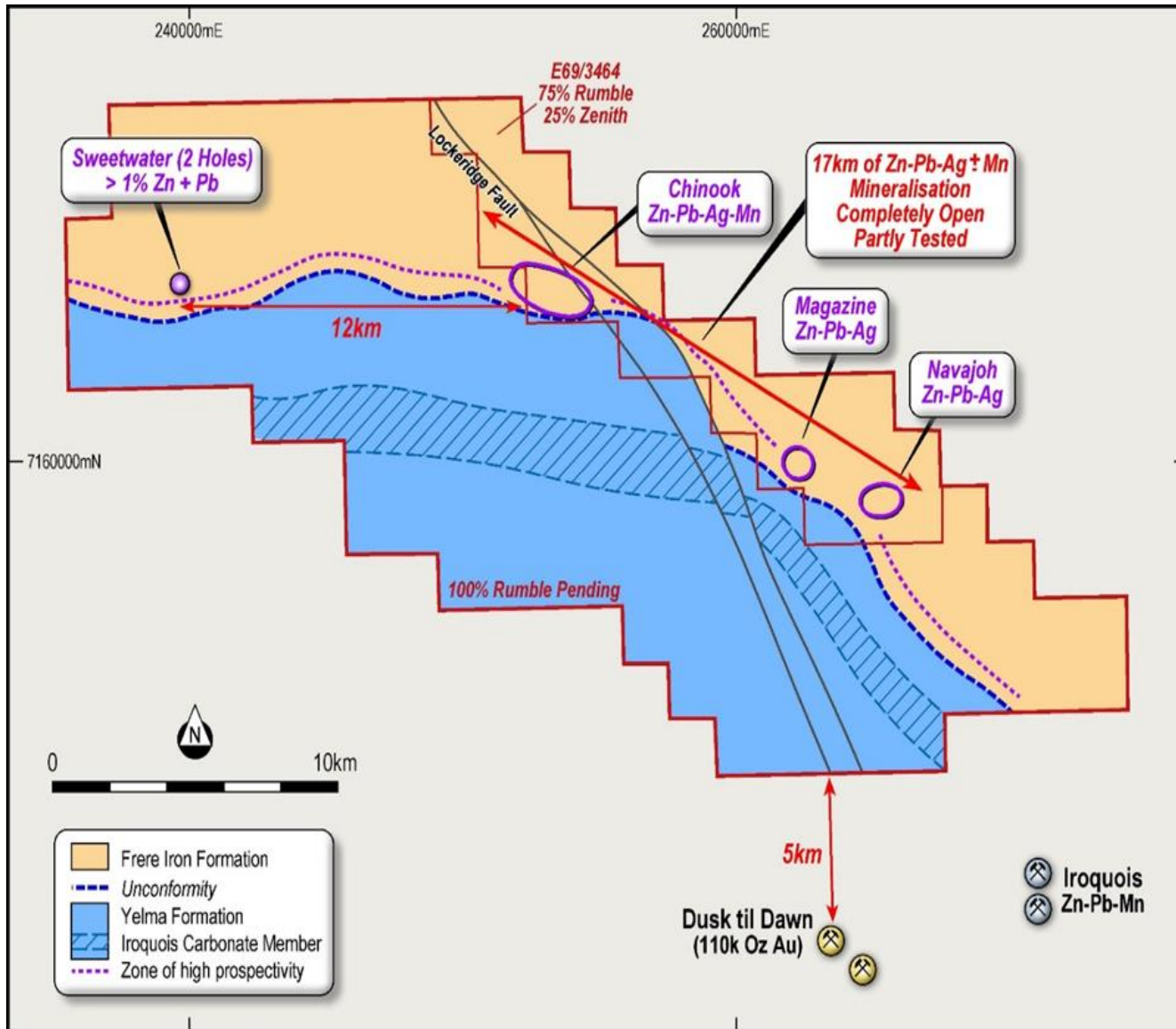
Tier 1 Scale Potential



- **Major Zn-Pb-Ag sulphide discovery** at (E69/3464) announced 19 April 2021, 110km north of Wiluna
- Intersected **34m @ 4.22% Zn-Pb** from 66m including **15m @ 6.97% Zn + Pb, 5.4 g/t Ag** from 74m at the Chinook Prospect – **True Width**
- RTR has a 75% interest in E69/3464 and 100% of contiguous applications E69/3787 & E69/3862
- Project covers **45km of unconformity prospective strike** which remains untested and open in all directions
- Potential for **multiple large scale sedimentary hosted Zinc-Lead sulphide deposits** throughout the project

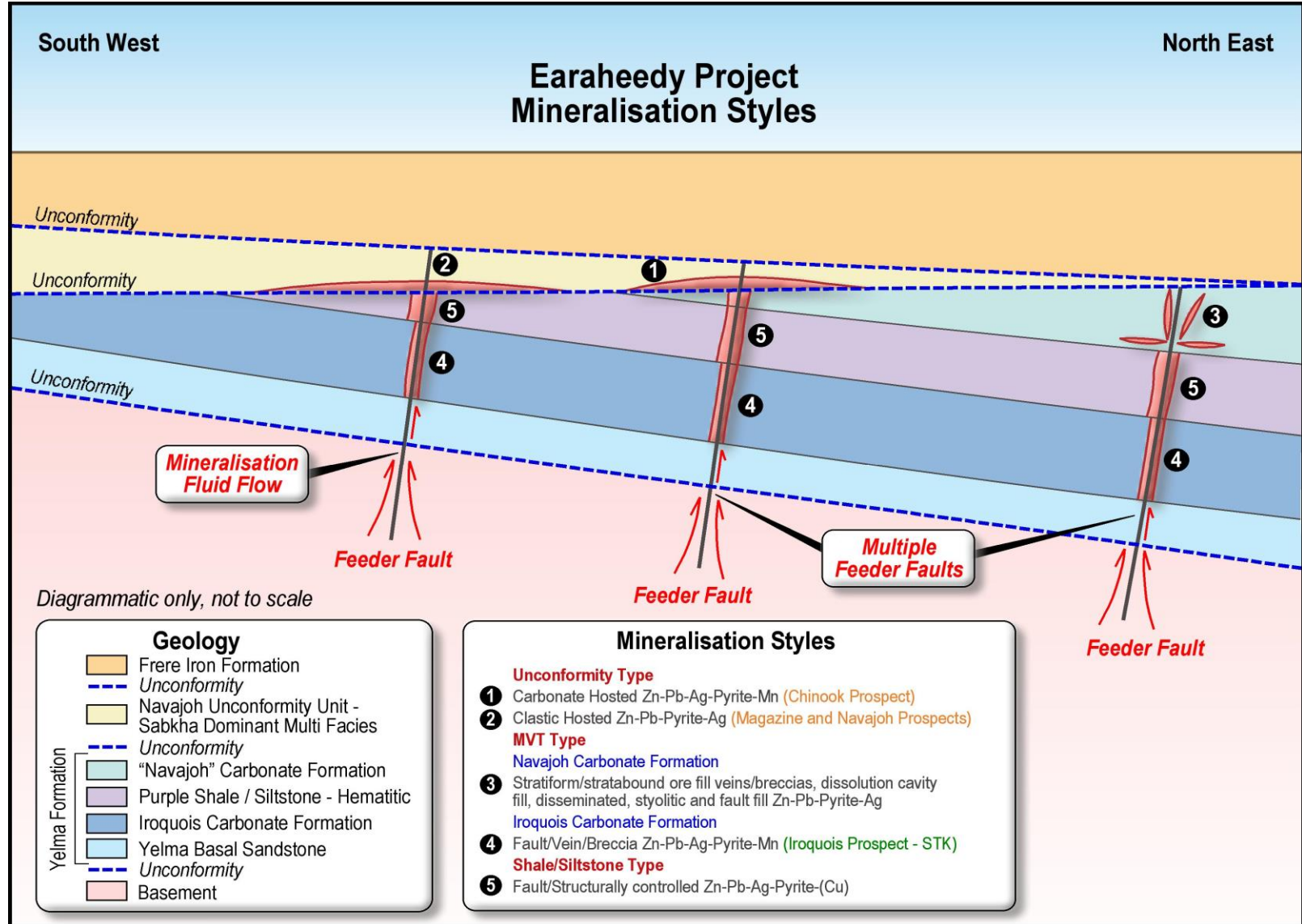
Earaheedy Zn-Pb-Ag Sulphide Discovery

Tier 1 Scale Potential

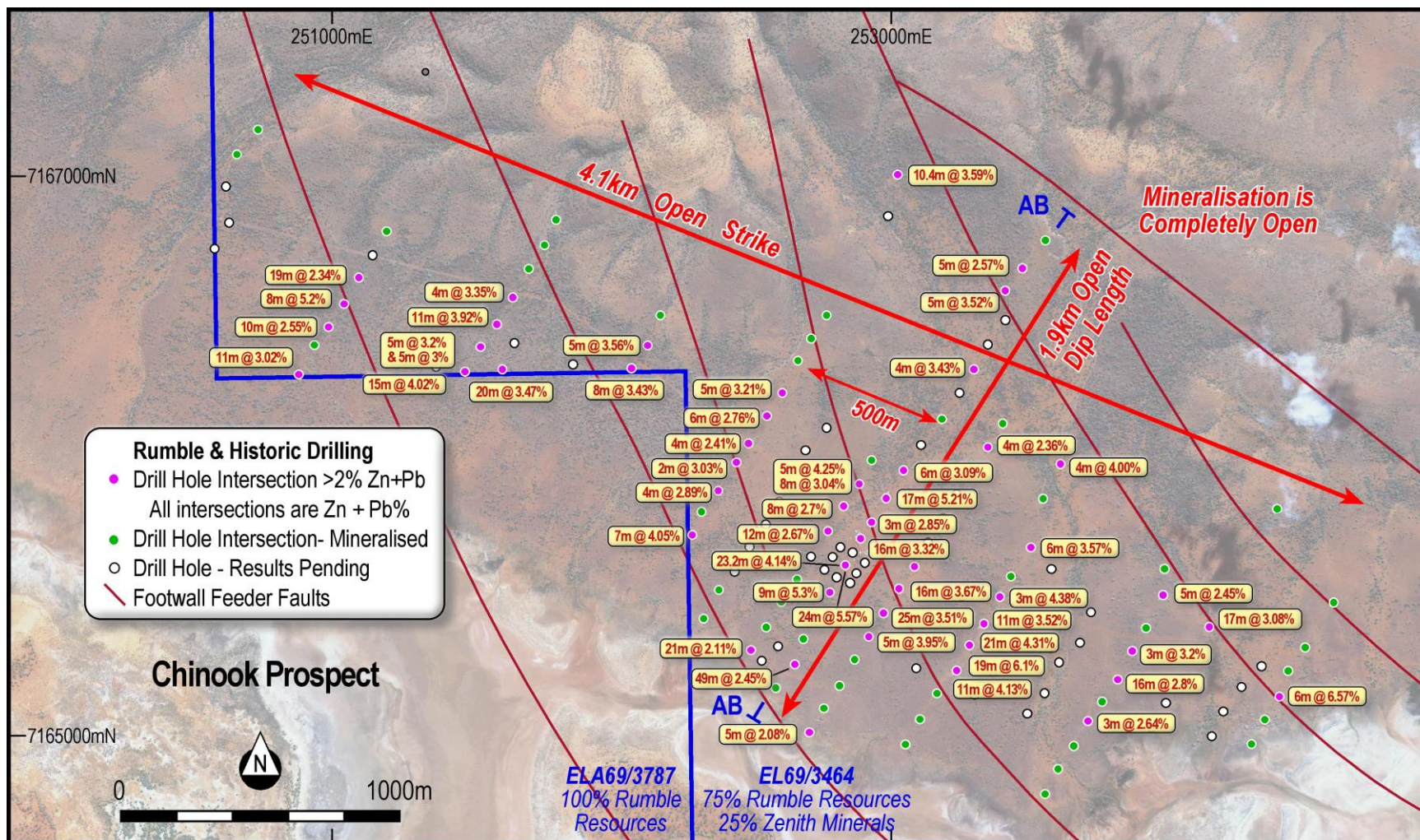


- First 9000m of assay results from the initial 40,000m RC and Diamond programs were outstanding:
 - At the Chinook Prospect extended mineralisation footprint by 224% to 4.1km x 1.9km, open in all directions
 - Already identified 17kms of mineralisation on granted tenement (E69/3464)
 - increased exploration target to 100—120Mt (3.5% - 4.5% Zn-Pb Sulphide) – Open Pit and Underground Potential
- Focus is on establishing the extent of mineralisation before targeting inferred high-grade feeder structures

Earaheedy Zn-Pb-Ag Sulphide Discovery Geological Model – 5 Target Zones



Chinook Zn-Pb-Ag Prospect Expanded to 4.1km x 1.9km - Open



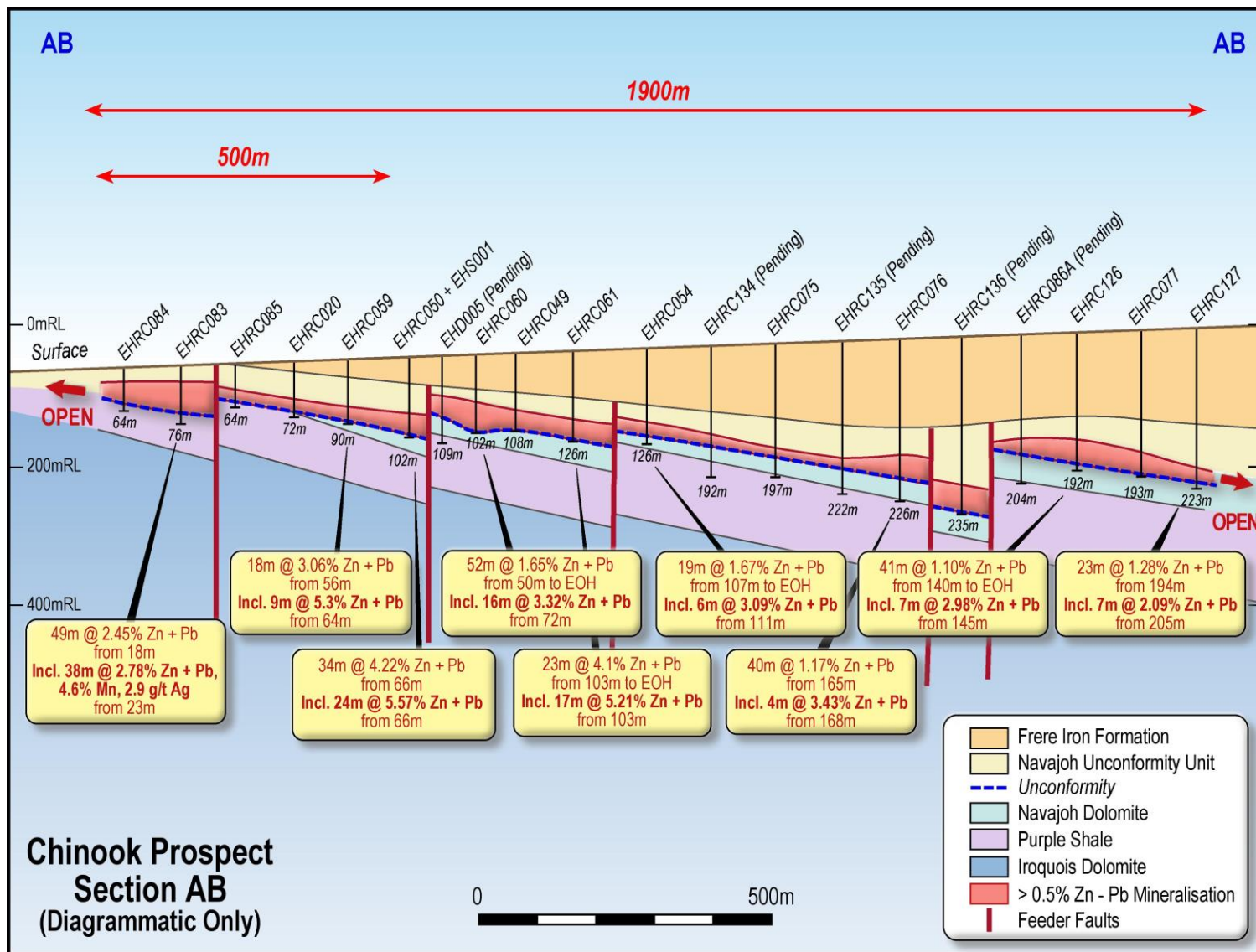
- 9000m of initial 40000m RC/DD program has expanded footprint to 4.1km by 1.9km, an increase of 224% - Open
- Zn-Pb grades increase significantly near interpreted NW trending inferred extension feeder faults
- **Each** inferred NW extension feeder fault has potential higher-grade Zn-Pb-Ag mineralisation along its strike length

Chinook Zn-Pb-Ag Prospect

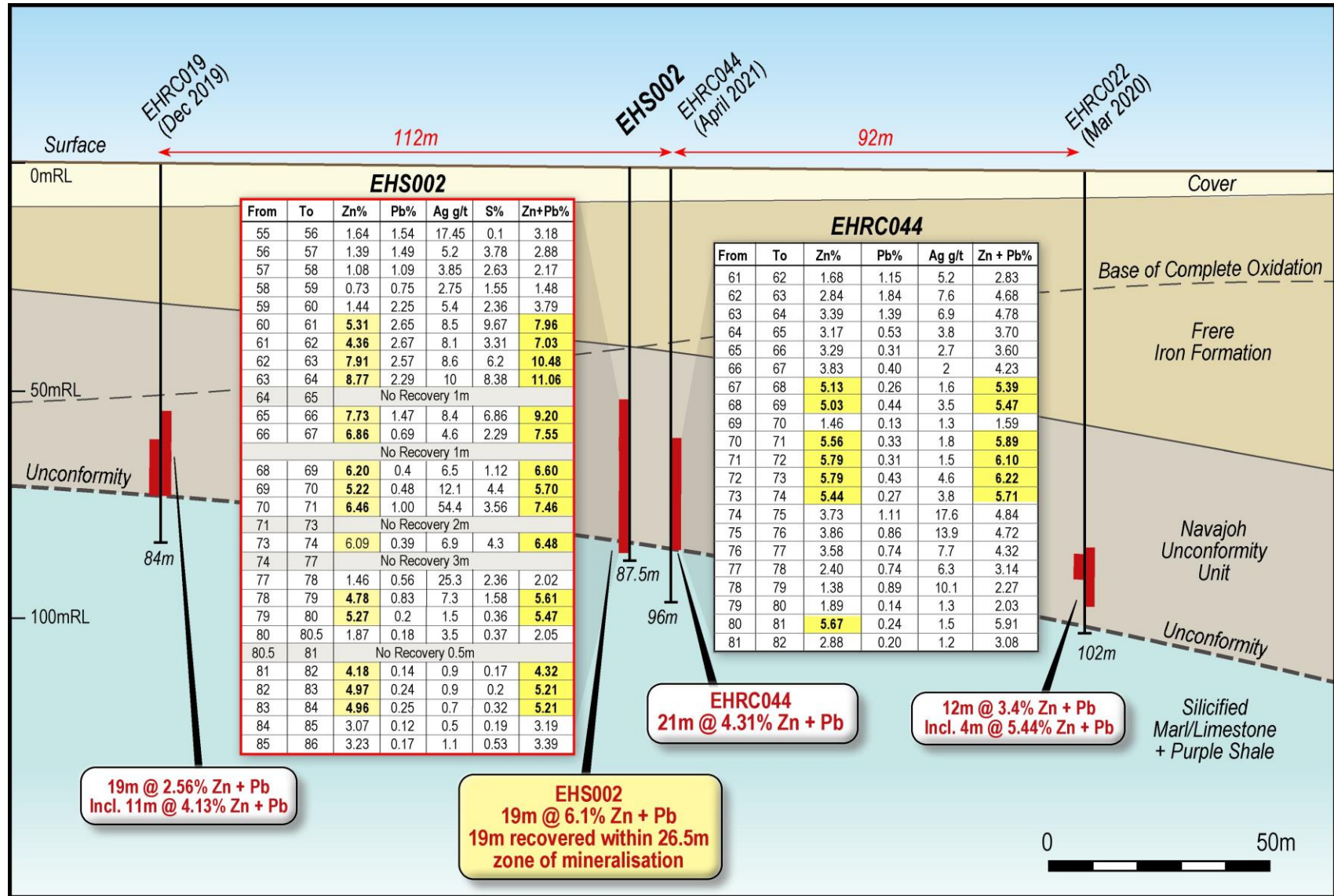
Section AB – 1.9km Open



- Higher Zn-Pb-Ag grades adjacent to the multiple feeder faults
- Navajoh dolomite hosts shallow flat lying Zn-Pb at open pitable depth – Initial focus of Drilling
- Iroquois dolomite below Navajoh dolomite has not been drill tested – Drill Targeting Commenced
- **Potential for multiple large-scale Zn-Pb sulphide open cut and underground deposit(s)**



Chinook Zn-Pb-Ag Prospect Sonic Drilling



Chinook Zn-Pb-Ag Sulphide Mineralisation Coarse Sphalerite-Galena-Pyrite



Scale comparison with Chinook Prospect Pering Zn-Pb Open Pit Mine, South Africa



- Open Pit mined by Tier 1 company Shell-BHP Billiton between 1986 – 2004 for 17 Years
- Historic production 20.5Mt of ROM ore milled at 2.6% Zn & 0.6% Pb
- Average production 1.2Mt pa
- 2 open pits to a depth of over 120m
- **Successful preconcentration dense media studies of the remaining Reserve at Pering (51.3Mt @ 1.1%Zn 0.3%Pb) by Mintek, South Africa for PBM Pty Ltd produced a 3-4 times enhancement of the feed grade (4.2%Zn and 1.0%Pb) prior to milling and floatation along with an 80% rejection of waste**

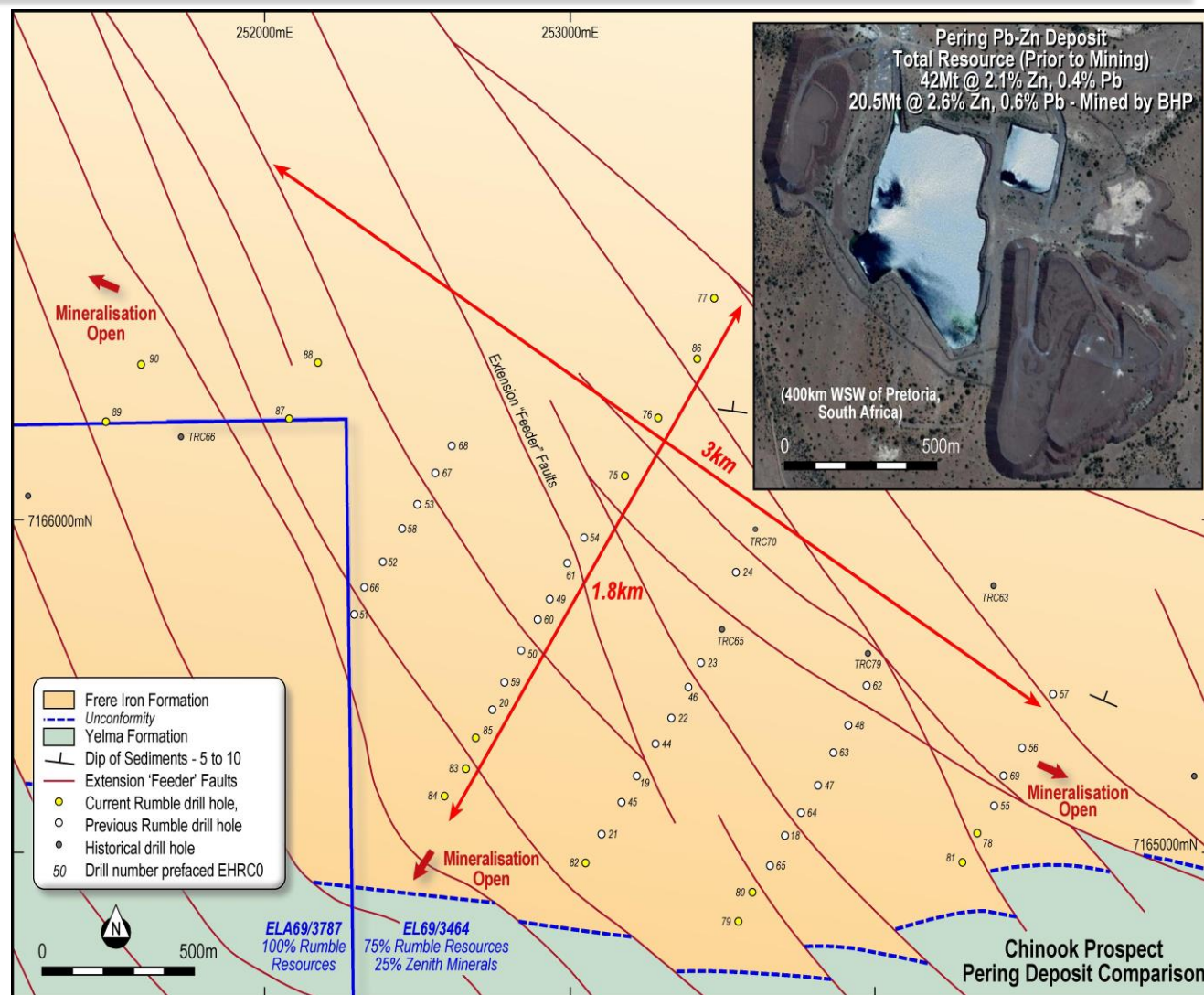
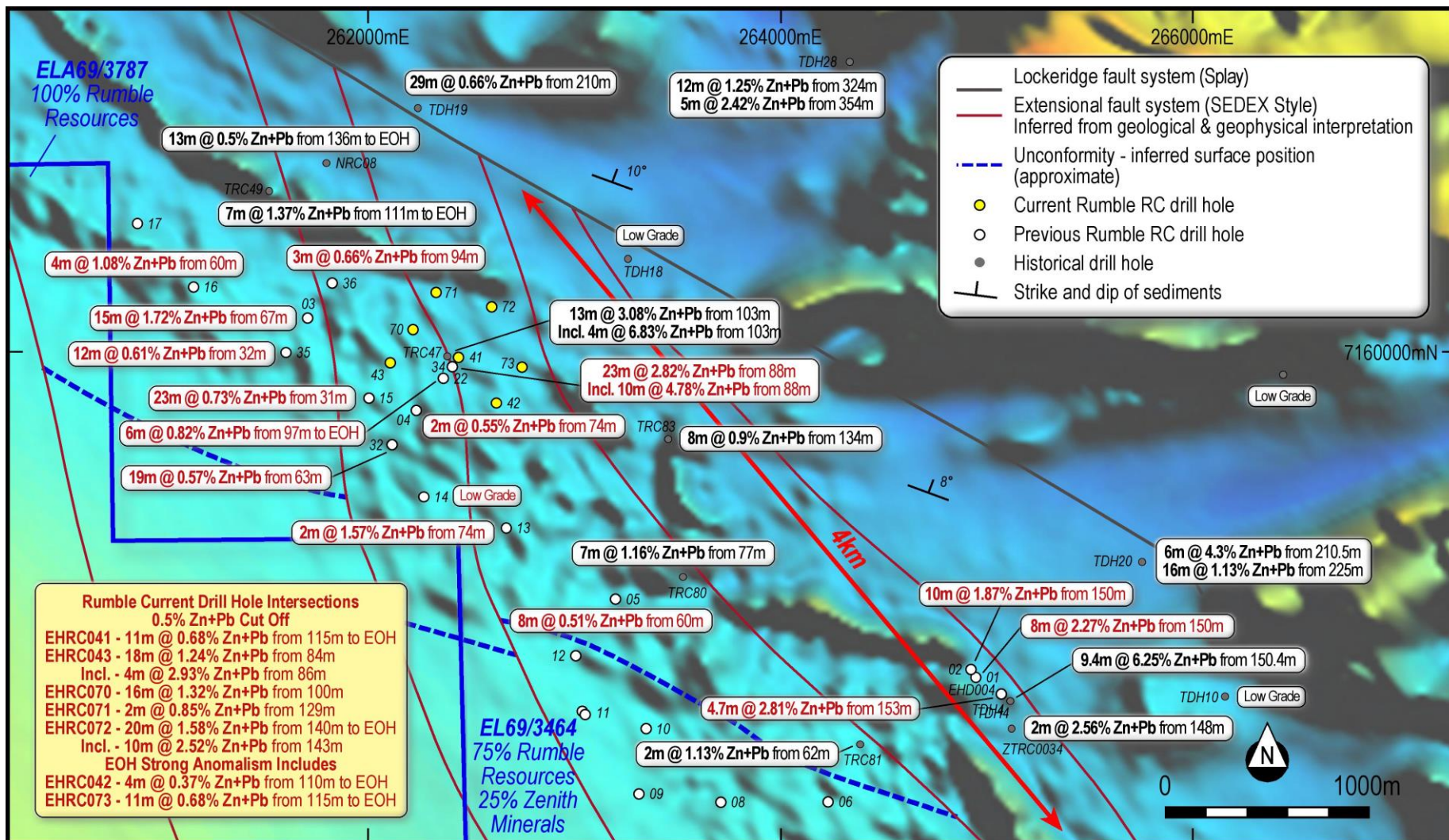


Image: Scale Comparison Map (top right) of Pering open pit over Chinook drilling (to scale)

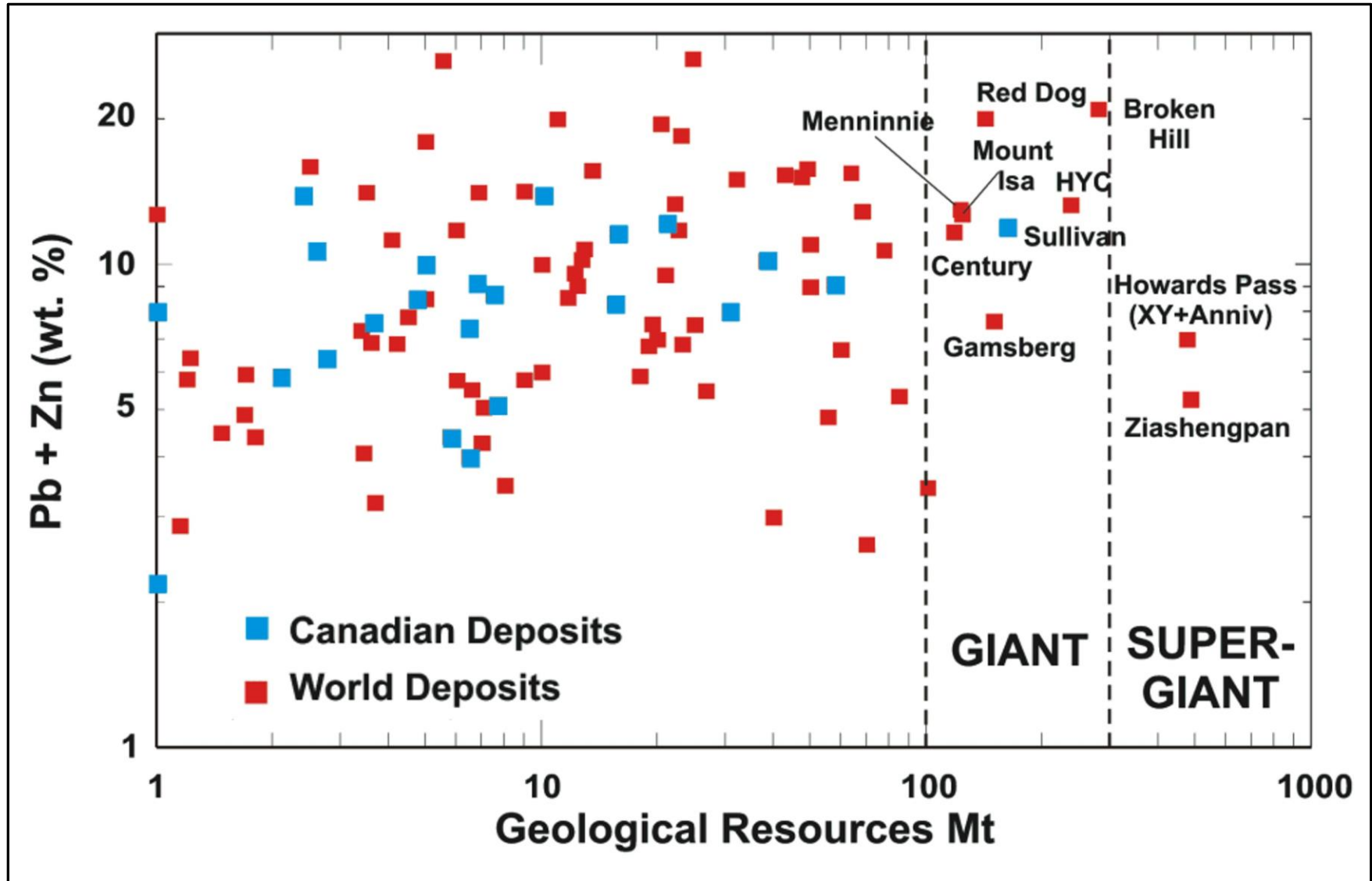
* <https://red-pennant-communications.com/2020/10/05/updated-mineral-resource-model-of-pering-zinc-lead-deposit/>

Magazine Zn-Pb-Ag Prospect Geology, Structures and Intercepts



- Like Chinook at Magazine Zn-Pb grades increase significantly near interpreted inferred extension feeder faults
- **Each** inferred north north/west extension feeder fault potential higher-grade Zn-Pb-Ag over length of the planes

Sedimentary Hosted Deposits Tier 1 Scale Potential



Earaheedy Zn-Pb-Ag Sulphide Discovery

First Stage Exploration Target



Rumble's first stage exploration target at the Earaheedy Project is between 100 to 120 million tonnes at a grade ranging between 3.5% Zn-Pb to 4.5% Zn-Pb Sulphide. The exploration target is at a shallow depth (120m), and over 40kms of prospective strike (completely open) has been defined within the Earaheedy Project. The potential quantity and grade of the exploration target is conceptual in nature, there has been insufficient exploration to estimate a Mineral Resource and it is uncertain if further exploration will result in the estimation of a Mineral Resource. The exploration target, being conceptual in nature, takes no account of geological complexity, possible mining method or metallurgical recovery factors. The exploration target has been estimated in order to provide an assessment of the potential for large-scale Zn-Pb deposits within the Earaheedy Project. The exploration target has been prepared and reported in accordance with the 2012 edition of the JORC Code.

The exploration target is based on the current geological understanding of the mineralisation geometry, continuity of mineralisation and regional geology. This understanding is provided by an extensive drill hole database, regional mapping, coupled with understanding of the host stratigraphic sequence and a feasibility study completed at the nearby Paroo Pb deposit. Included in the data on which this exploration target has been prepared is recent RC drilling of 17 holes for approximately 2500m (RC/Diamond) (assays returned for 4 and 13 holes assays pending), 30 holes for 2690m (three RC stages), 33 holes for 3593m recently completed and diamond drilling of 4 holes for 1199.8m completed by Rumble along with 64 historic RC drill holes completed within the project area (E69/3464) by previous explorers (refer historical exploration results in previous ASX announcements dated 5 February 2019 and 12 October 2017, 23rd January 2020 which continue to apply and have not materially changed).

Earaheedy Zn-Pb Project – Exploration Target

Range	Tonnes	Grade
Lower	100,000,000	3.5% Zn + Pb Sulphide
Upper	120,000,000	4.5% Zn + Pb Sulphide

The Company intends to test the exploration target with drilling and this further drilling is expected to extend over approximately 12 months. Grade ranges have been either estimated or assigned from lower and upper grades of mineralisation received in drilling results. A classification is not applicable for an exploration target

Some of the considerations in respect of the estimation of the exploration target include:

- Drilling results have demonstrated strong continuity of shallow, flat lying mineralisation;
- Over 45km's of prospective strike and open (refer image on page 6);
- Minimum 600m of width (based on shallow 7.5° and shallow depth to 120m, based on drilling results.
- True width (thickness) of mineralisation up to 34 metres received in drilling results; and
- Specific gravity (SG) of 2.5 (world average SG of sandstone – not accounting for metal).

Earaheedy Zn-Pb-Ag Sulphide Discovery

Next Steps



- ❖ Initial 40,000 Metre Drill Program nearing completion only 9000m Assays received
 - ❑ 1 Sonic Rig - *Metallurgy & Reconciliation*
 - ❑ 2 Diamond Rigs - *Geology*
Target inferred high-grade feeders at Depth
 - ❑ 2 RC Drill Rigs - *Scope limit of Chinook*
Test Geophysical Targets
Discover New Prospects – 17km strike
- ❖ Metallurgy - *Initial Testwork has commenced*
- ❖ Gravity & Seismic - *Analysis Ongoing*
- ❖ Airborne Magnetics - *Planned*

Pipeline of Projects De-risked Strategy Multiple Avenues to World Class Discoveries



Clear Strategy

- Generate a pipeline of projects at various stages of development
- Critically review each project to ensure capable of world class discoveries
- Negotiate low-cost upfront optionality
- De-risked due to multiple avenues to discovery

Discovery History

- Fast track low-cost drill target generation
- Drill first order targets for discovery
- Technical team discovered multiple deposits that turned into mines

Project Development

- Board and Management experienced in developing discoveries into mines

Gold Resources

Western Queen Au Project

- Unmined open pit and underground resources of 163,268oz @ 2.42 g/t Au
- Significant high-grade intersections include:
6m @ 34.24 g/t Au,
6.3m @ 36.09 g/t Au,
7m @ 60.6 g/t Au & 6m @ 37.34 g/t Au
- Scope to significantly expand the resources at depth and discover new deposits along the 35kms of WQ shear zone strike to be drill tested
- High-Grade System Targets:
Multiple high-grade gold open pit and underground deposits

Five Advanced Projects, Large Scale Systems Discovered - Tier 1 Potential

Munarra Gully Au-Cu-Ag-Zn Project

- Amaryllis Prospect - Large Scale Au-Cu-Ag-Zn system discovered with intercepts:
57m @ 0.85 g/t Au, 0.27% Cu, 4.2 g/t Ag and 10m @ 2.88 g/t Au, 0.54% Cu, 7.5 g/t Ag
- Over 2.3km's of Au-Cu-Ag up to 50m wide and open in all directions
- Over 15km's of strike untested
- Large Scale Targets:
Large Scale Chibougamau Au-Cu-Ag shear vein style type deposits

Earaheedy Zn-Pb-Ag Project

- Major Zn-Pb-Ag Discovery
- Chinook Prospect 4.1km's x 1.9km's and open in all directions
- Over 45km's of prospective strike - completely open
- Tier 1 Targets:
Multiple large tonnage Sediment Hosted Zn-Pb-Ag deposits
First Stage Exploration Target:
100-120Mt 3.5-4.5% Zn-Pb Open pittable depths

Braeside Zn-Pb-Cu-Ag-Au-V Project

- 60km's of mineralisation
- 45 Priority Cu-Au-Zn-Pb-Ag targets generated
- High-grade Pb-Zn-Ag breccia pipes discovered
- Broad Cu with Zn-Pb Intercepted - Potential new VMS Province
- Large Scale System Targets:
Large scale porphyry related base metal and VMS deposits

Warroo Cu-Zn-Pb-Ag-Au-U-Pt Project

- Warroo Hill member prospect - 18km's of strike with extensive shallow copper to 3.43% and Zinc to 26% remains untested
- Potential New VMS Province
Large Scale Targets:
Large scale VMS type deposits

Wardawarra Ni-Cu-Co-Ta-Nb-Sn-Au Project

- Shallow Nickel mineralisation defined over 1.8km of strike with intercepts:
19.8m @ 0.88% Ni, 0.1% Co from 10.7m Incl. 9.1m @ 1.26% Ni from 19.8m
39.6m @ 0.63% Ni, 0.08% Co from surface Incl. 16.8m @ 0.81% Ni from 6.1m
- Large Ta-Ni-Tn Pegmatite Field - Not tested for Li-C-Rb-Ree
- 35km of Western Queen High-grade Gold Shear Zone
- Large Scale Targets:
Large Scale Ni-Cu-Co, Ta-Nb-Sn (Li-C-Rb-REE Potential) and Au deposits

Two JV Projects in World Class Jurisdiction - Tier 1 Targets

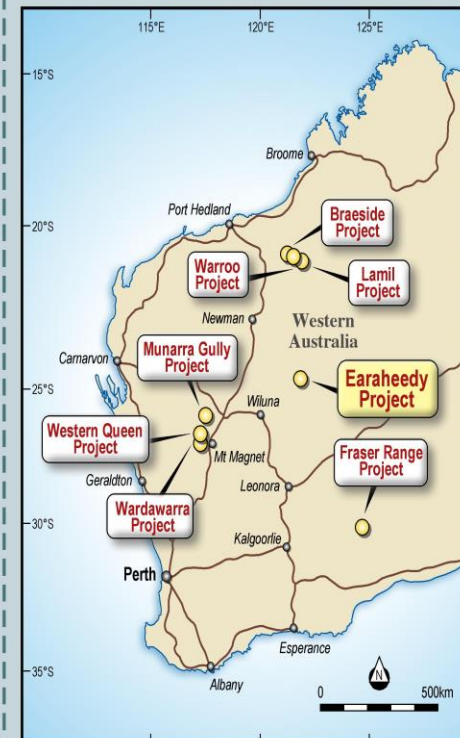
Lamil Cu-Au Project

- \$10M farm out with AIC Mines (ASX:A1M)
- 26 Au-Cu targets located between world class Nifty & Telfer mines in Paterson Province
- Key target is Lamil Dome which has similar dome size, trend & inferred host rocks to the nearby Telfer Au-Cu Dome deposit (32Moz, 1Mt Cu resource)
- Tier 1 Targets:
Large scale Au-Cu deposits

Fraser Range Ni-Cu-Au Project

- JV with major IGO Limited (ASX: IGO) on 2 Projects
- Two high-grade Au discoveries 16m @ 6.69 g/t Au & 6m @ 9.15 g/t Au
- Magnetic low/gravity high targets & multiple EM conductors over a 12km Cu-Zn trend - 30km along strike from Mawsons Ni-Cu Discovery
- Tier 1 Targets:
Large scale Ni-Cu and Au deposits

All Projects in Western Australia



Company Activity and Key Milestones



Activity	Nov-21	Dec-21
<i>Rumble Primary Focus</i>		
Earaheedy Project – 40,000m RC & Diamond drilling program ongoing 35,000m Completed only 9,000m Assays Received – Remaining Assays Pending	■	■
Earaheedy Project – Airborne magnetics survey	■	■
<i>JV Partner Advancing</i>		
Lamil JV Project – Drilling and Airborne EM Completed – Assays Pending	■	■
<i>Rumble – Low Cost High Impact Exploration</i>		
Munarra Gully Project – Drilling EM Plates Completed – Assays Pending	■	■
Wardawarra and Western Queen Project - Regional Exploration	■	■

Investor Contacts



Shane Sikora, Managing Director

E: info@rumbleresources.com.au

Web: www.rumbleresources.com.au

Address:

Level 1,
16 Ord St
WEST PERTH, WA 6005
+61 8 6555 3980

Connect with Rumble:



<https://twitter.com/RumbleResources>



<https://www.linkedin.com/company/rumble-resources-ltd>

Disclaimer



Disclaimer;

- This presentation has been prepared by Rumble Resources Limited (Rumble or the **Company**). It contains general information about the Company's activities current as at the date of the presentation. The information is provided in summary form and does not purport to be complete. This presentation is not to be distributed (nor taken to have been distributed) to any persons in any jurisdictions to whom an offer or solicitation to buy shares in the Company would be unlawful. Any recipient of the presentation should observe any such restrictions on the distribution of this presentation and warrants to the Company that the receipt of the presentation is not unlawful. It should not be considered as an offer or invitation to subscribe for or purchase any securities in the Company or as an inducement to make an offer or invitation with respect to those securities. No agreement to subscribe for securities in the Company will be entered into on the basis of this presentation or any information, opinions or conclusions expressed in the course of this presentation. This presentation is not a prospectus, product disclosure document or other offering document under Australian law or under any other law. It has been prepared for information purposes only. This presentation contains general summary information and does not take into account the investment objectives, financial situation and particular needs of any individual investor. It is not financial product advice and investors should obtain their own independent advice from qualified financial advisors having regard to their objectives, financial situation and needs. Rumble nor any of their related bodies corporate is licensed to provide financial product advice.
- This presentation and information, opinions or conclusions expressed in the course of this presentation contains forecasts and forward looking information. Such forecasts, projections and information are not a guarantee of future performance, involve unknown risks and uncertainties. Actual results and developments will almost certainly differ materially from those expressed or implied. There are a number of risks, both specific to Rumble, and of a general nature which may affect the future operating and financial performance of Rumble, and the value of an investment in Rumble including and not limited to title risk, renewal risk, economic conditions, stock market fluctuations, manganese demand and price movements, timing of access to infrastructure, timing of environmental approvals, regulatory risks, operational risks, reliance on key personnel, reserve estimations, native title risks, foreign currency fluctuations, and mining development, construction and commissioning risk.
- You should not act or refrain from acting in reliance on this presentation, or any information, opinions or conclusions expressed in the course of this presentation. This presentation does not purport to be all inclusive or to contain all information which its recipients may require in order to make an informed assessment of the prospects of Rumble. You should conduct your own investigation and perform your own analysis in order to satisfy yourself as to the accuracy and completeness of the information, statements and opinions contained in this presentation before making any investment decision. Recipients of this presentation must undertake their own due diligence and make their own assumptions in respect of the information contained in this presentation and should obtain independent professional advice before may any decision based on the information. No representation or warranty, express or implied, is made in relation to the fairness, accuracy or completeness of the information, opinions and conclusions expressed in the course of this presentation. To the maximum extent permitted by law, no representation, warranty or undertaking, express or implied, is made and, to the maximum extent permitted by law, no responsibility or liability is accepted by the Company or any of its officers, employees, agents or consultant or any other person as to the adequacy, accuracy, completeness or reasonableness of the information in this presentation. To the maximum extent permitted by law, no responsibility for any errors or omissions from this presentation whether arising out of negligence or otherwise is accepted. An investment in the shares of the Company is to be considered highly speculative.
- The exploration targets or conceptual exploration targets in this presentation or expressed during the course of this presentation are subject to completion of the necessary feasibility studies, permitting and execution of all necessary infrastructure agreements. In relation to any statements pertaining to future exploration targets or conceptual exploration targets, the nature of the exploration target means that the potential quantity and grade is conceptual in nature, that there has been insufficient exploration to define a Mineral Resource and that it is uncertain if further exploration will result in the determination of a Mineral Resource. This presentation and information, opinions or conclusions expressed in the course of this presentation should be read in conjunction with Rumble's other periodic and continuous disclosure announcements lodged with the ASX, which are available on the Rumble website. They involve risk and uncertainties that could cause actual results to differ from estimated results. Forward-looking statements include, but are not limited to, statements concerning the Company's exploration programme, outlook and target sizes. They include statements preceded by words such as "potential", "target", "scheduled", "planned", "estimate", "possible", "future", "prospective" and similar expressions.
- RTR confirms that it is not aware of any new information or data that materially affects the information contained in ASX announcement dated 2 August 2021 in relation to the Western Queen resource estimate. All material assumptions and technical parameters underpinning the mineral resource estimates continue to apply and have not materially changed.

Competent Person Statement:

- The information in this presentation that relates to Exploration Results, exploration targets or Mineral Resources is based on information compiled or reviewed by Mr Brett Keillor, who is a Member of the Australian Institute of Mining and Metallurgy. Mr Keillor has sufficient experience, which is relevant to the style of mineralisation and type of deposit under consideration and to activities undertaken, to qualify as a Competent Person as defined in the 2012 Edition of the "Australasian Code for Reporting of Exploration Results, Mineral Resources and Ore Reserves". Mr Keillor consents to the inclusion in the presentation of the matters based on his information in the form and context in which it appears.
- Refer previous announcements in respect of exploration results dated 18th November 2021, 10th November 2021, 18 October 2021, 8 July 2021, 2 June 2021, 19 April 2021, 23 February 2021, 17 February 2021, 15 February 2021, 3 February 2021, 28 January 2021, 4 November 2020, 6 October 2020, 20 May 2020, 4 May 2020, 24 April 2020, 17 Feb 2020, 11 Feb. 2020, 23 Jan 2020, 26 November 2019, 8 November 2019, 21 November 2019, 21 October 2019, 1 October 2019, 23 August 2019, 22 August 2019, 6 August 2019, 11 July 2019, 1 July 2019, 4 April 2019, 12 March 2019, 12 February 2019, 6 February 2019, 17 December 2018, 27 November 2018, 30 August 2018 and 9 August 2018 along with Jv partner AICs (ASX:a1m) announcements 28-1-21 and 8-9-21. The resource and acquisition terms for the Western Queen Au Project was disclosed in the ASX announcement dated 6 August 2019. Rumble is not aware of any new information or data that materially affects the information included in that relevant market announcement and that all material assumptions and technical parameters underpinning the estimates in the relevant market announcement continue to apply and have not materially changed.

References

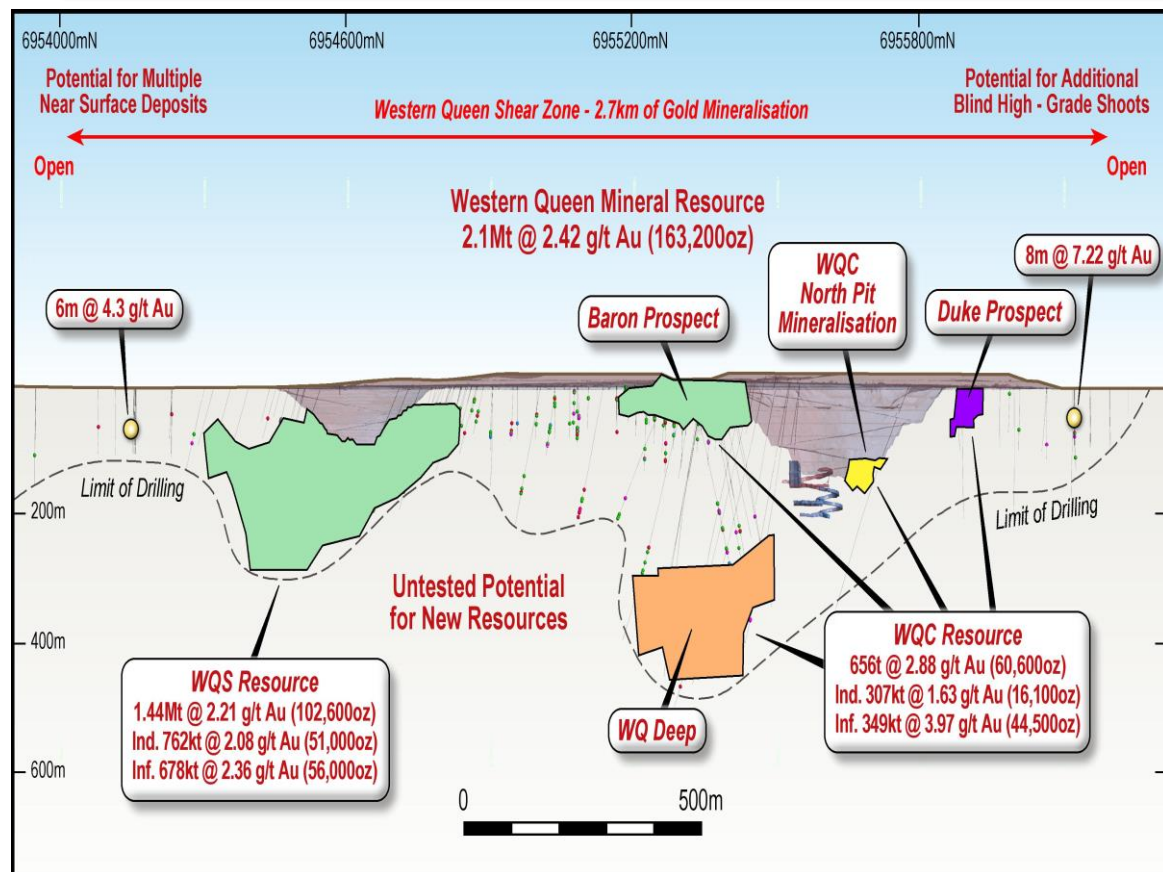
1. Sedimentary Exhalative (Sedex) Zinc-Lead-Silver Deposit Model, Chapter N of Mineral Deposit Models for Resource Assessment, US Department of the Interior, U.S. Geological Survey, Reston, Virginia: 2016 <https://pubs.usgs.gov/sir/2010/5070/n/sir20105070n.pdf>
2. Page 10 - <https://www.911metallurgist.com/blog/SEDEX-sedimentary-exhalative-ore-deposits>

Appendices





Western Queen Project – High-Grade System Open Pit & Underground Au Resources



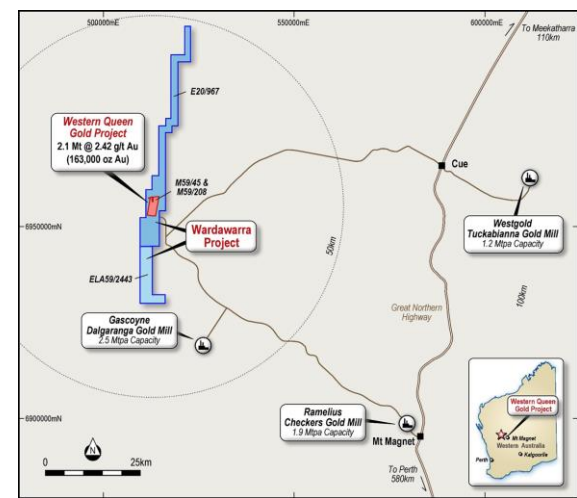
Western Queen Project (100% RTR)

- Located within a 110km radius of three operating gold processing mills
- Resources on mining leases and strike extent on granted exploration permit
- Potential for immediate development of open-pit and underground operations

Resource Expansion Potential

- Immediately below the current resources at WQ South and WQ Central
- Between WQ Central and WQ South at Depth
- Northeast along strike from the Duke Prospect
- South along strike WQ South

Cut-off g/t	Classification	Tonnes (t)	Au g/t	Contained Metal
O/C @ 0.5 UG @ 1.5	Indicated	1,069,218	1.95	67,145
	Inferred	1,027,954	2.91	96,123
	Total	2,097,172	2.42	163,268



Wardawarra Project – Large Scale System Ni-Cu-Co, Au & Ta-Nb-Sn-Li Prospects

Wardawarra Project (100% RTR)

Western Queen Gold Deposit(s) – Extension

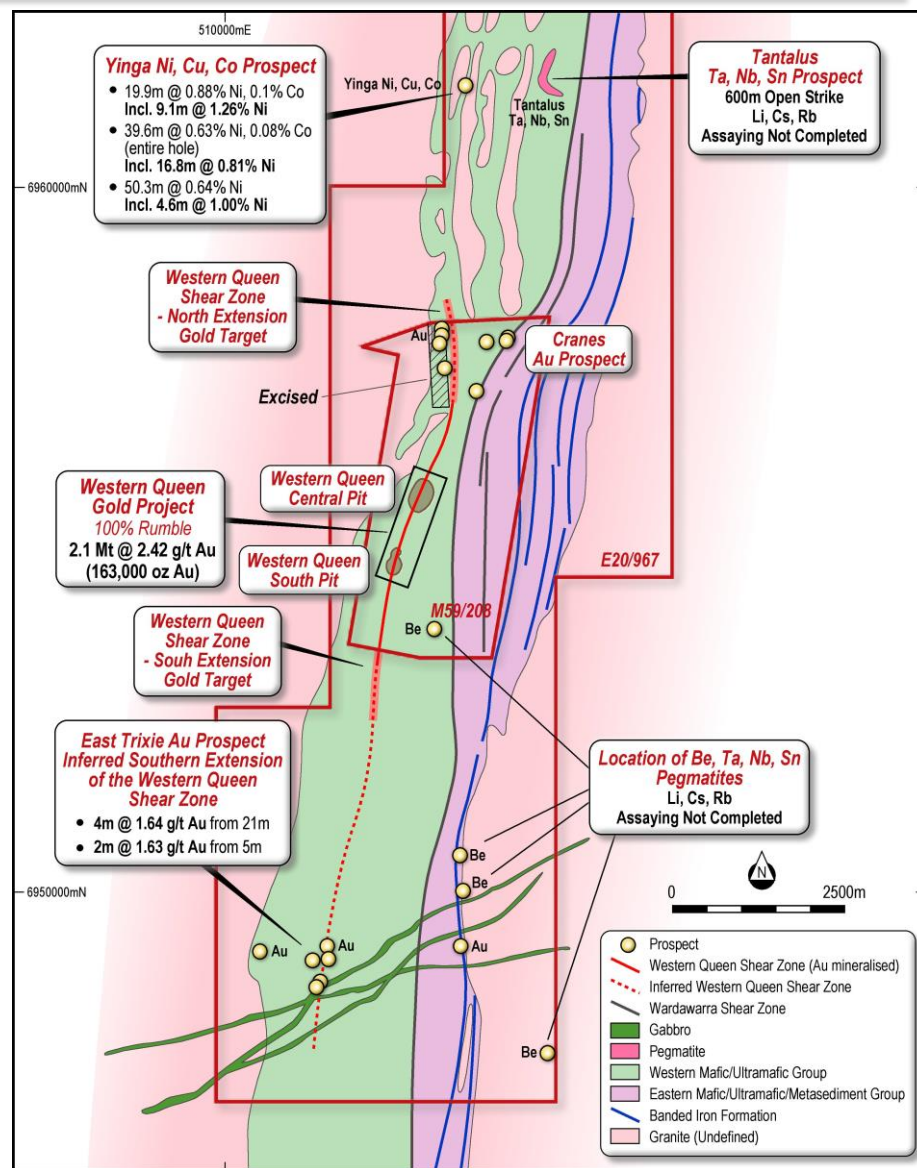
- The inferred southern extension of the Western Queen Shear Zone extends into the Wardawarra Project (E20/967) under 10 – 15m of cover approximately 1.5km south of the Western Queen South Pit. No drilling has tested the zone.
- The inferred northern extension of the Western Queen Shear Zone has not been drill tested under cover 1km north of the Western Queen Central Pit within M59/208 and into the Wardawarra Project (E20/967).

East Trixie Gold Prospect

- The inferred southern extension of the mineralised Western Queen Shear Zone is interpreted to be associated with a series of historic gold prospects collectively known as East Trixie.

High-Grade Au System

- Historic High-Grade gold intercepts showcase the exploration upside along the Western Queen Shear Zone including:
 - 4m @ 49.73 g/t Au from 134m (QND-38975-1)
 - 5m @ 38.76 g/t Au from 193m - (WQRC188)
 - 8m @ 26.27 g/t Au from 14m (WQRC155)
 - 7m @ 60.6 g/t Au from 70m – (WQJC-32)
 - 6m @ 37.34 g/t Au from 50m – (QNC-10310-1)
 - 6.4m @ 36.09 g/t Au from 305.7m (WQD-1072)
 - 6m @ 34.24 g/t Au from 354m (WQRC007D)



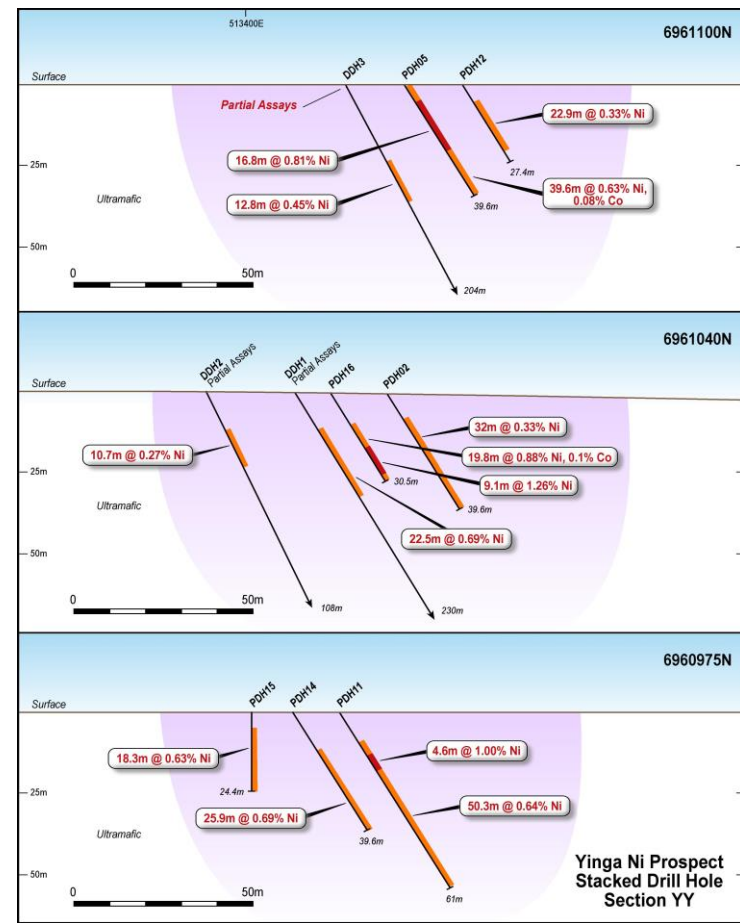
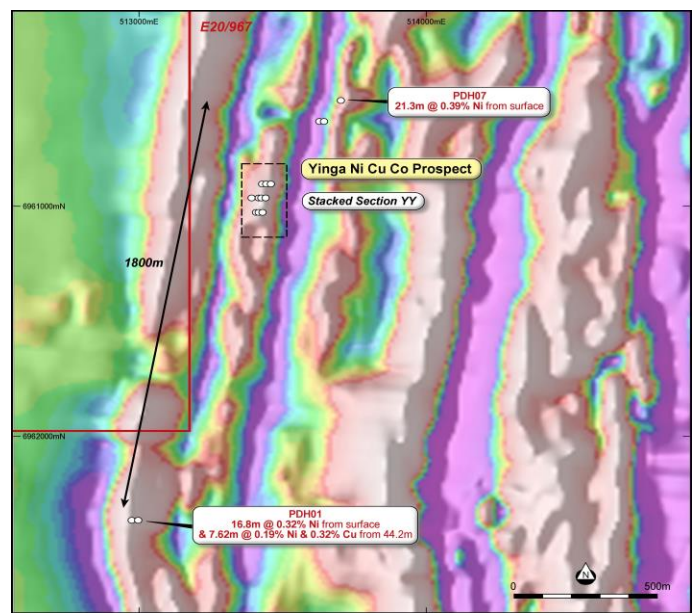
Yinga Ni-Cu-Co Prospect

Large Mineralised Ultramafic Complex

- Historic drilling defined significant oxide Nickel, Copper and Cobalt at the Yinga prospect 5km north of the Western Queen Gold Project. Intersections include:
 - 19.8m @ 0.88% Ni, 0.1% Co from 10.7m (PDH16)**
 - Including 9.1m @ 1.26% Ni from 19.8m
 - 50.3m @ 0.64% Ni from 10.7m (PDH11)**
 - Including 4.6m @ 1% Ni from 15.2m
 - 39.6m @ 0.63% Ni, 0.08% Co from surface (entire hole PDH05)**
 - Including 16.8m @ 0.81% Ni from 6.1m
 - 25.9m @ 0.69% Ni from 13.7m (PDH14)**
 - 22.5m @ 0.69% Ni from 12.5m (DDH1 – part assayed)**

- Nickel mineralisation defined over 1.8km of strike with three prospective ultramafic horizons with potential for further parallel zones east of the Yinga Prospect
- Historic drilling tested only the shallow oxide-transition zone highlighting significant potential for massive Nickel-Copper-Cobalt sulphides down dip/plunge and along strike

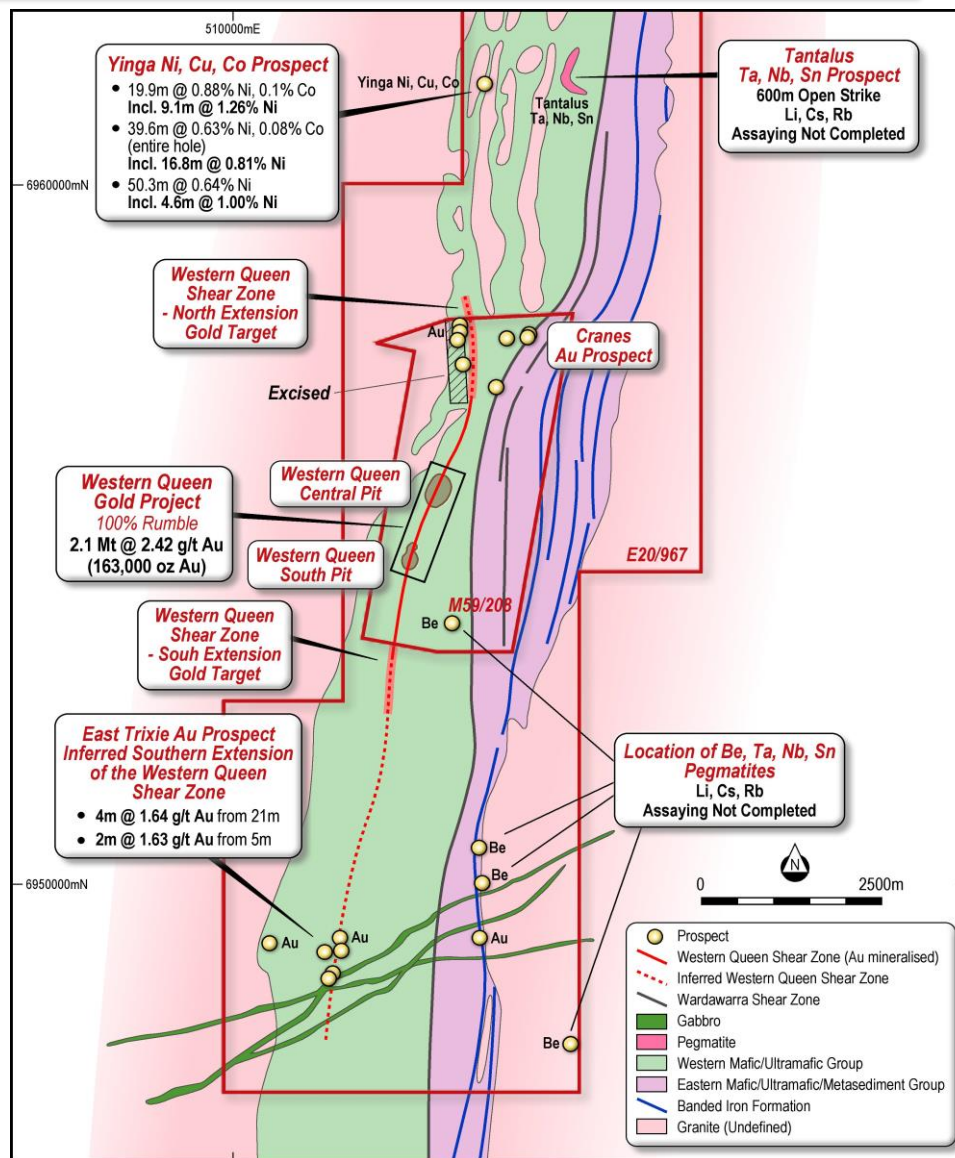
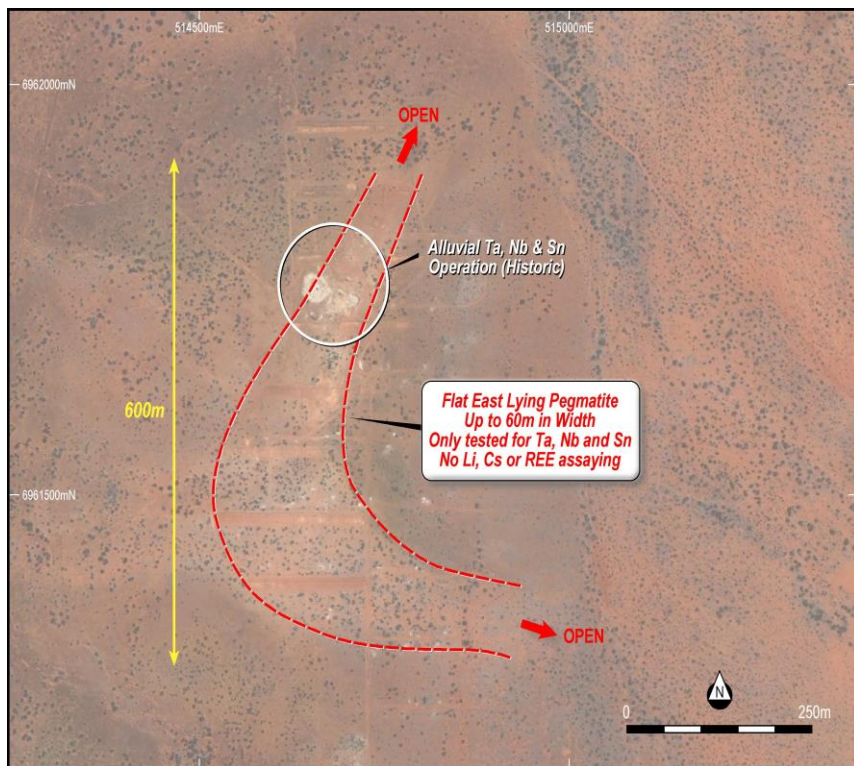
all drill hole intersections are drill hole length



Tantalus Ta-Nb-Sn Prospect - Li Potential

Large Pegmatite Field

- A series of fertile pegmatites (Ta, Nb, Sn) occur along the eastern margin of the Wardawarra greenstone belt with the Wardawarra Project with only one pegmatite, the Tantalus Ta-Nb-Sn prospect tested by historic drilling
- The Tantalus Ta-Nb-Sn Prospect is a large flat lying pegmatite over 600m in strike and up to 60m in width previously mined for alluvial tantalum, niobium and tin – Open along strike and at depth
- **No Lithium, Rubidium, Caesium or Rare Earth Elements assays completed**



Munarra Gully Project - Large Scale System

Amaryllis Au-Cu-Ag Prospect



Amaryllis Prospect (E51/1919 & E51/1927 100% RTR)

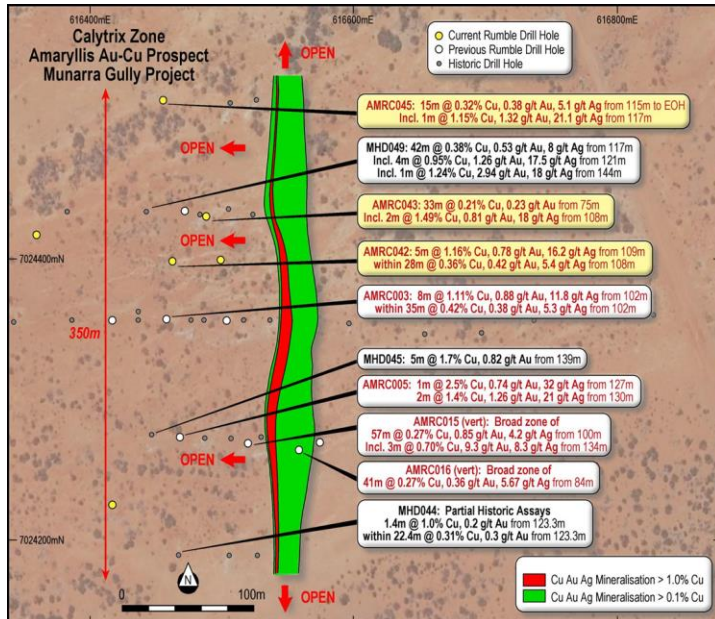
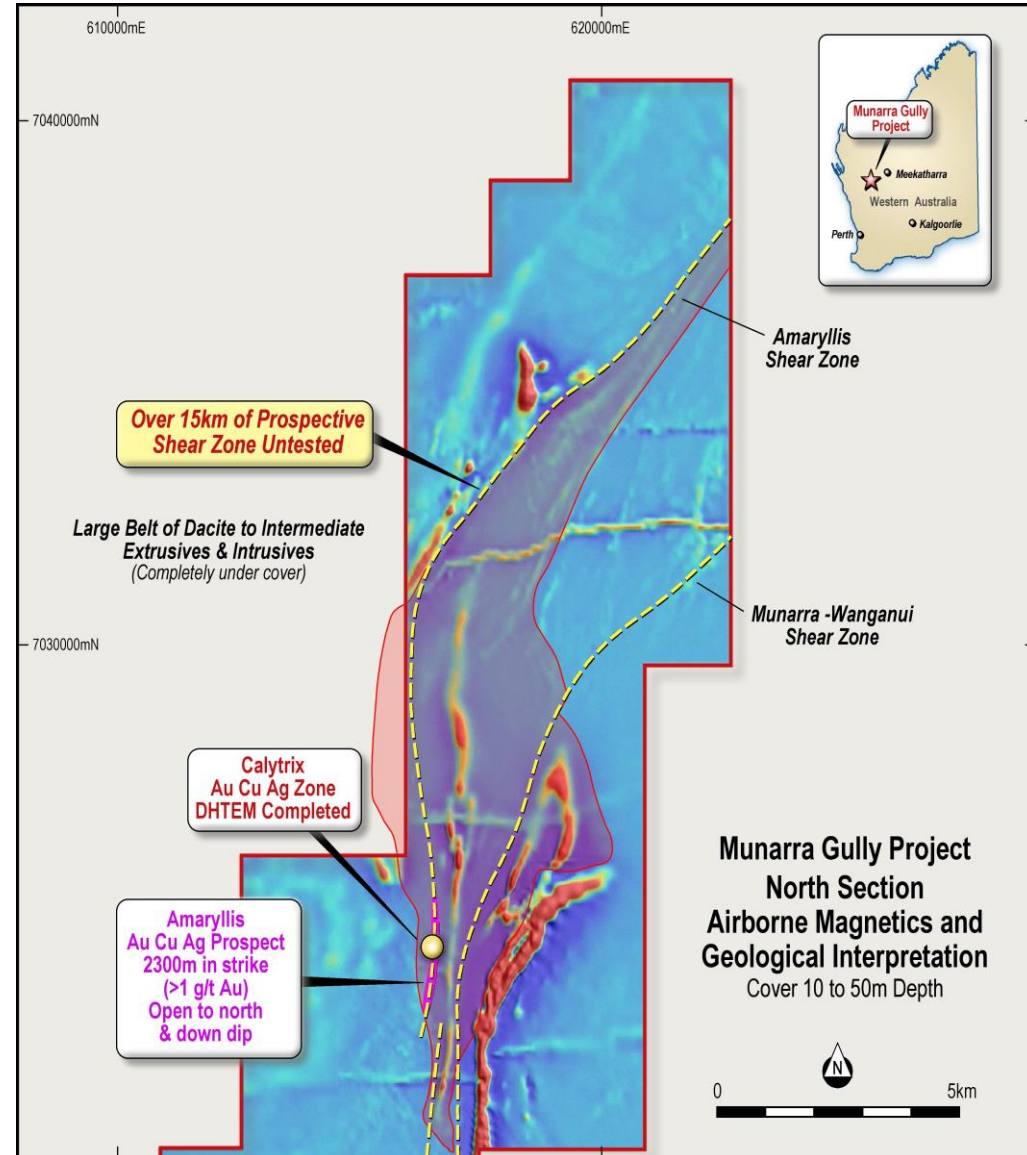
- Over 2300m of Au-Cu-Ag up to 50m wide mineralised strike
- Open to North - 15kms of strike

Significant Au-Cu-Ag mineralisation:

- 57m @ 0.85 g/t Au, 0.27% Cu 4.2 g/t Ag from 100m (AMRC015)
- 8m @ 1.11% Cu, 0.88 g/t Au, 11.8 G/t Ag from 102m (AMRC003)

High-grade Au mineralisation:

- 2m @ 13.45 g/t Au from 92m (AMRC012)
- 4m @ 6.21 g/t Au from 94m (AMRC006 – 4m composites)

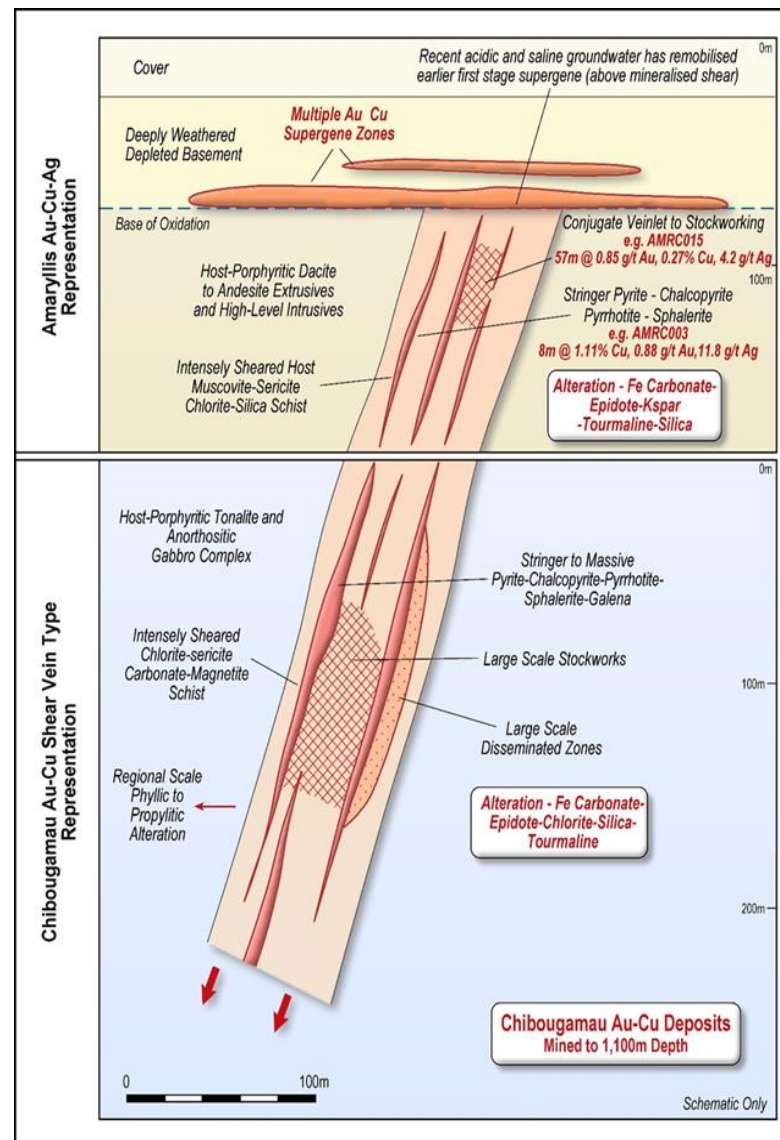


Amaryllis Au-Cu-Ag Prospect - Geological Comparison

Chibougamau Au-Cu Shear Vein Deposit

- The style of mineralisation has similar characteristics with Chibougamau Au-Cu-Ag shear vein style deposits located in the eastern part of the Abitibi Greenstone Belt in Quebec, Canada. At Chibougamau, major (later) shearing has overprinted earlier deformation within an area of high-level porphyries (Au-Mo-Cu) and minor VMS that have intruded into early sediments and mafic intrusive complex rock types
- Strong dip component to ore deposits - shoot like
- **Of Note: Chibougamau Au-Cu-Ag shear vein style deposits have produced 3.5 million oz (gold) and 1 million copper metal tonnes at an average weighted grade of 1.76% Cu and 2.05 g/t Au. Some of the deposits at Chibougamau have been mined down to 1.1km in depth.**

Criteria	Amaryllis Au-Cu-Ag Prospect	Chibougamau Au-Cu Shear Vein Deposit Type
Commodities	Au-Cu-Ag	Au-Cu-Ag
Mineralisation	Pyrite-chalcocopyrite-pyrrhotite-sphalerite	Pyrite-chalcocopyrite-pyrrhotite-sphalerite-galena
Deformation and Alteration of Host (pervasive)	Intensely sheared/mylonised muscovite-sericite-chlorite-silica zones partitioned within weakly foliated to massive host Alteration zones 50-100m width Limited drilling outside zone	Intensely sheared/mylonised chlorite-sericite-carbonate+/-magnetite zones partitioned within undeformed host 100m scale breccia – disseminated-stockwork Km scale phyllic to propylitic
Alteration Associated with Mineralisation	Fe carbonate (ankerite)-epidote-Kspar-tourmaline-silica	Fe carbonate (ankerite)-epidote-chlorite-silica-tourmaline
Host Rocks	Porphyritic dacitic to andesitic extrusives high-level intrusives with later tonalitic dykes	Porphyritic tonalite intruding into anorthositic gabbro complex
Ore Zone Characteristics	Stringer sulphide shears with semi massive sulphide zones Evidence of large lower grade stockwork/disseminated zones	Stringer to massive sulphide shear vein (2 to 5m wide mineable) – large disseminated/stockwork zones Strong dip component to ore zones. Lesser strike component

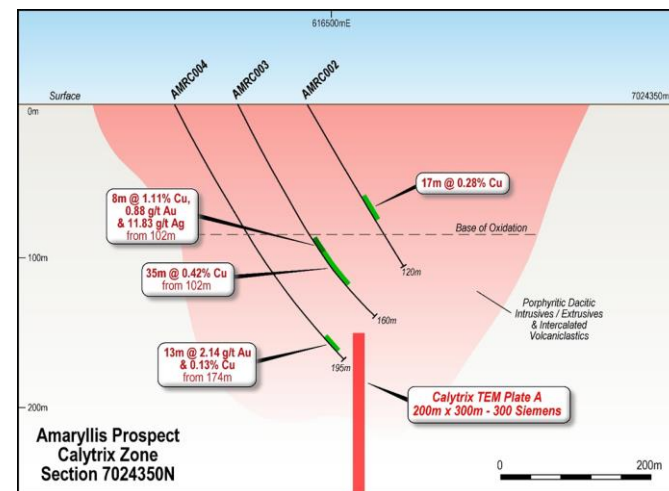
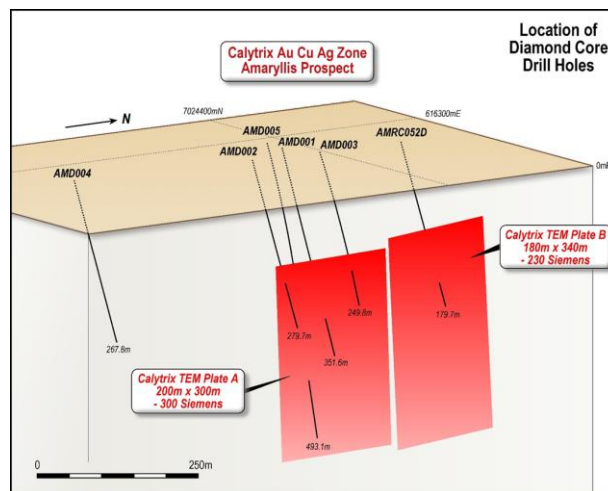
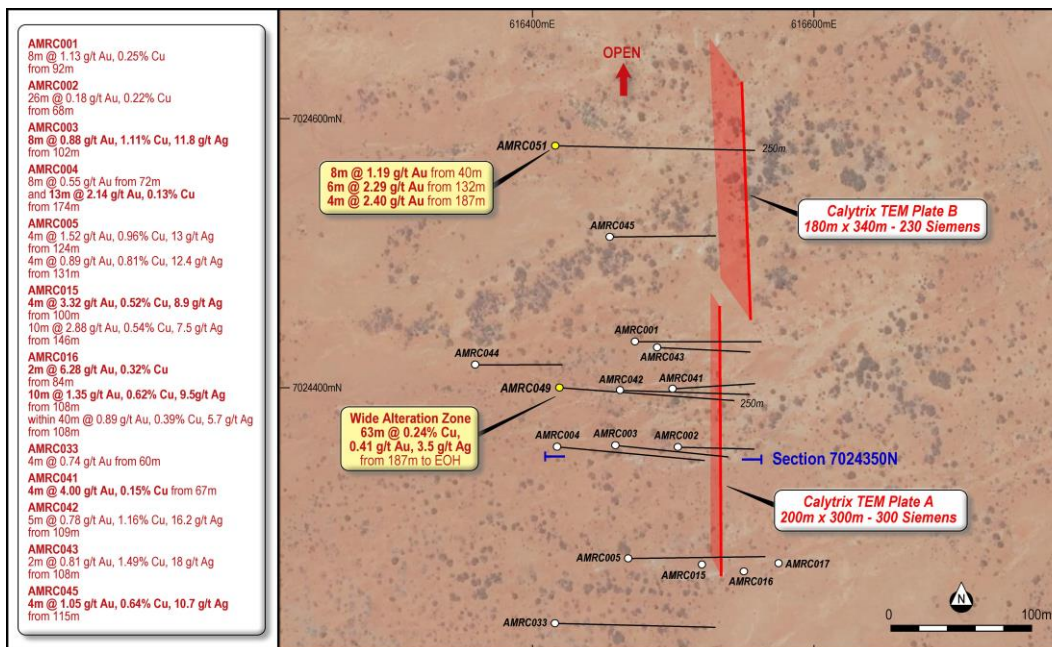


Amaryllis Au-Cu-Ag Prospect

Calytrix Au-Cu-Ag Zone

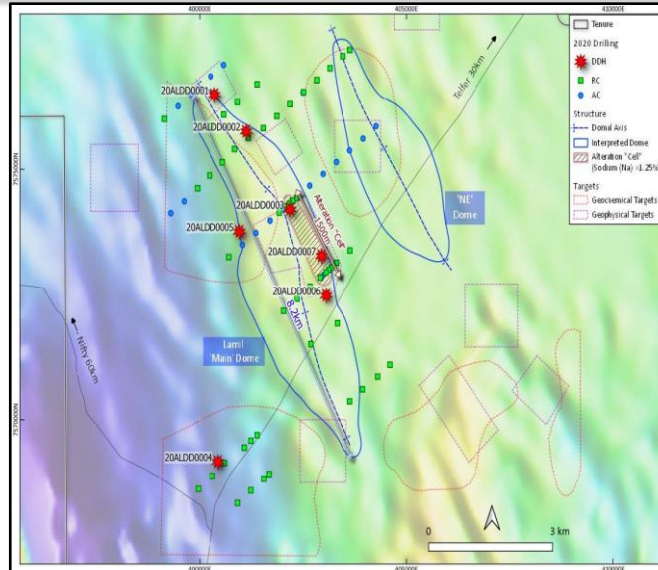
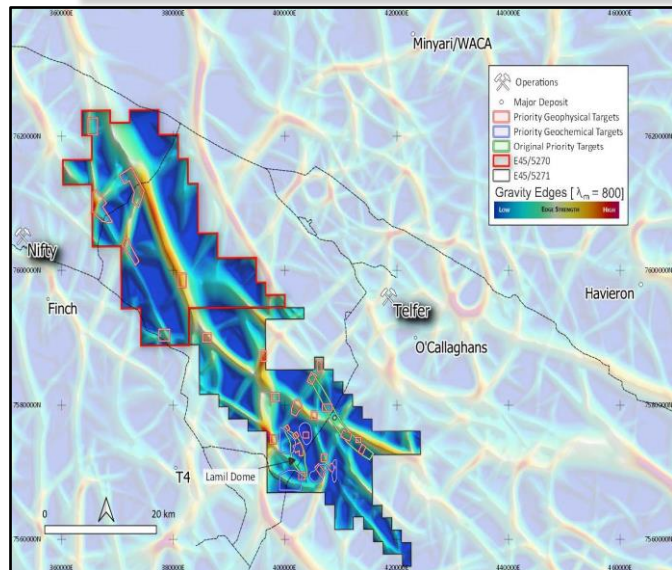


- Within Amaryllis, the Calytrix zone has previously reported drill intercepts >1g/t Au and 1% Cu within its 350m strike length
- Rumble recently completed 2 RC drillholes to 250m angled depth (with optimal positioning 180m apart along strike) to facilitate a DHTEM survey to identify conductive EM Plates that may represent high-grade Au-Cu-Ag deposits at depth
- Two subvertical semi-continuous high-order conductive EM plates were delineated at vertical depths of 120 to 150m:
 - Calytrix TEM Plate A** - 200m in strike and 300m deep (300 Siemens)
 - Calytrix TEM Plate B** - 180m in strike and 340m deep (230 Siemens)
- Assays are pending for six diamond drill holes completed which subsequently tested the EM plates
- Initial visual observations are encouraging with stringer style Cu sulphide mineralisation observed in all six holes as anticipated - based on previous drilling results the Cu mineralisation is anticipated to have a correlation with Au-Ag- mineralisation



Lamil JV Project – Tier 1 System

Lamil Dome Au-Cu Prospect



(RTR 100% - AIC Earning 65%)

- AIC Mines can earn 50% interest by spending \$6 million at Lamil over 4 years, thereafter AIC can earn a further 15% by spending \$4 million over 1 year if Rumble does not elect to contribute.
- Key target is Lamil Dome which has similar dome size, trend, & inferred hosts rocs to the nearby Telfer Au-Cu Dome deposit (32Moz, 1Mt Cu resource)

Multiple Drill Programs

- Maiden drilling program in 2020 confirmed:
 - Presence of prospective basement lithologies including metasedimentary rocks (quartz sandstones, siltstones, quartzite) and mafic intrusives (gabbro and dolerite).
 - Sulphide minerals including pyrite, pyrrhotite and chalcopyrite were intersected in a number of holes.
 - Extensive alteration zones, including silicification, albitisation and carbonate-biotite-sericite-chlorite alteration.
 - These elements are indicators of hydrothermal fluid activity potentially associated with the development of intrusive related gold-copper mineral systems.
- Follow-up RC drilling completed 8,800m in October 2021 – Assays Pending



Above: NQ2 core from diamond drillhole 20ALDD0003 showing typical brecciation at approximately 365m downhole

Left: NQ2 core from diamond drillhole 20ALDD0003 showing pyritic quartz-carbonate veining at approximately 500m downhole

Braeside Project – Large Scale System

30+ High Priority Cu-Au-Zn-Pb-Ag Prospects

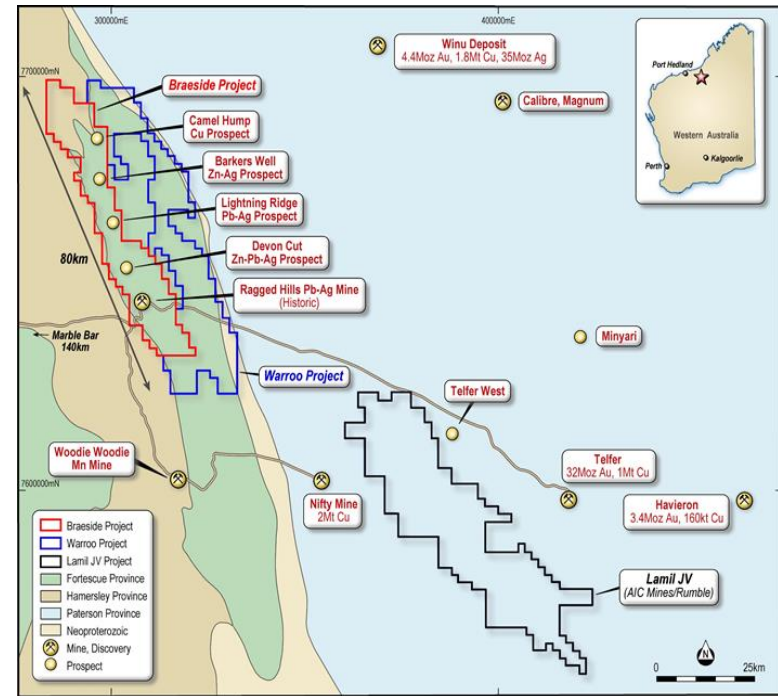
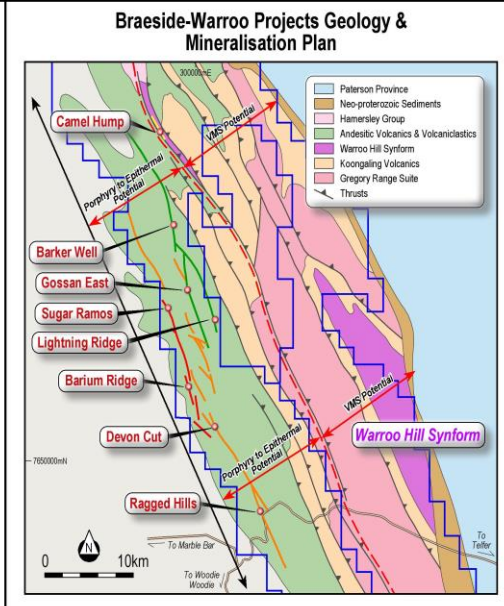
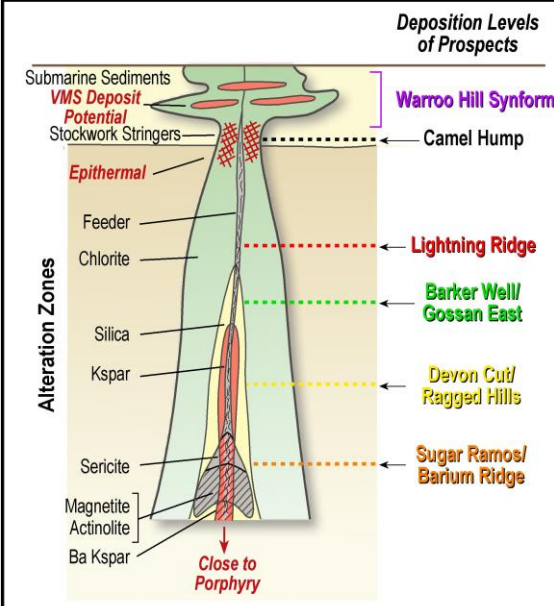
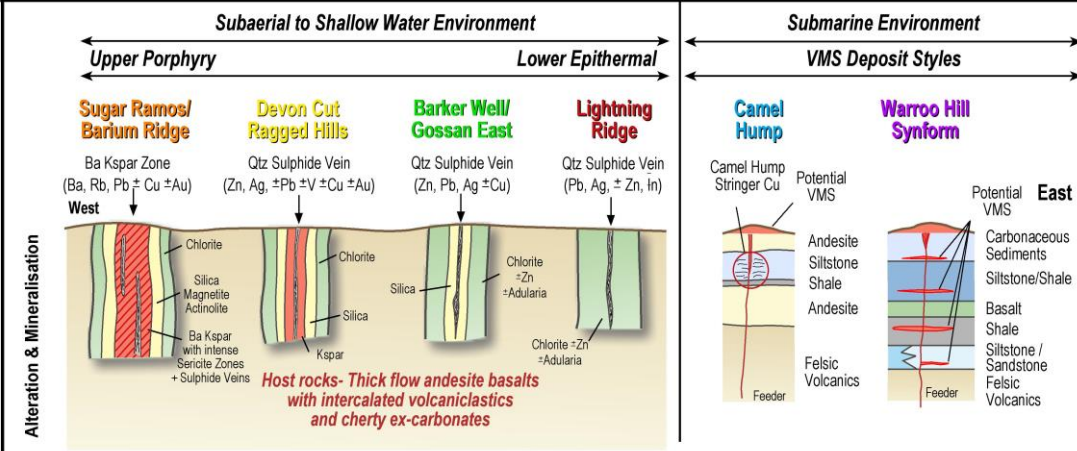


Braeside Project (100% RTR)

- Regional Scale Porphyry, Epithermal and potential VMS province fracture system over 60km in strike and 8km in width
- Over 30 high priority base metal prospects including:
 - Barkers Well Prospect** – 800m long fracture zone with multiple high grade Pb breccia pipes
 - Camel Hump Cu Prospect** - Wide zone of oxide stringer copper hosted in volcanoclastic siltstone and shale – VMS Potential

Schematic only
not to scale

Braeside-Waroo Geological Model

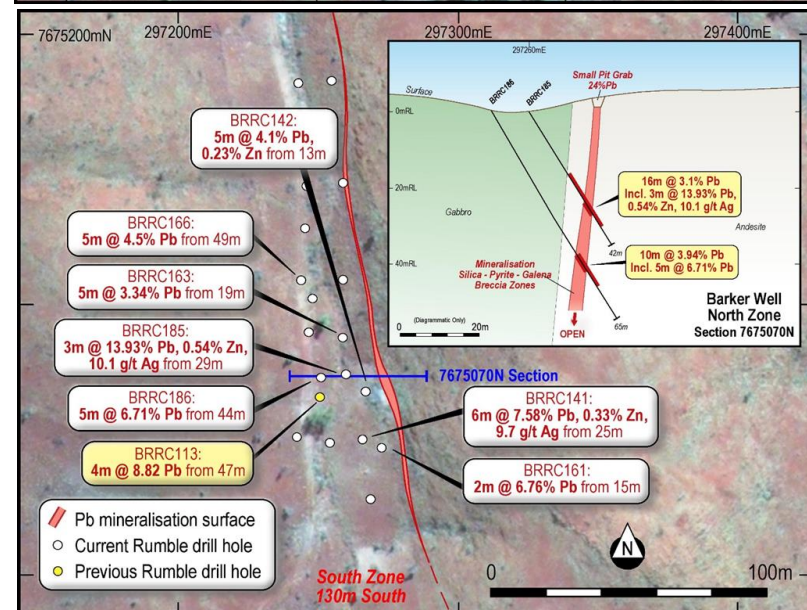
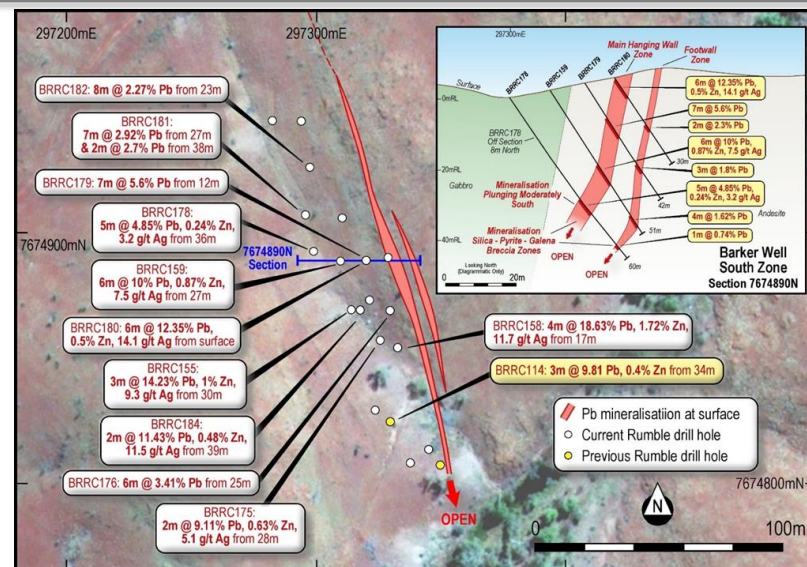
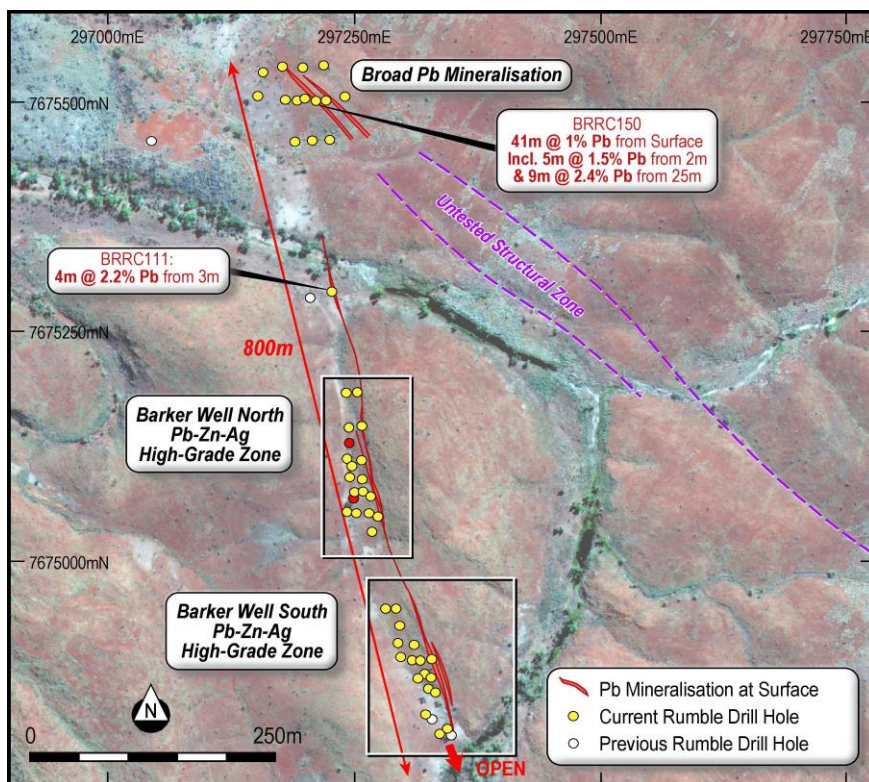


Barker Well Prospect High-Grade Pb-Zn-Ag Breccia Pipes



High-Grade Lead-Zinc-Silver Intersected

- Three step dipping galena breccia zones defined over 800m
- Mineralisation is open in all directions
- Drilling is shallow with 80% of drilling to depth of only 50m
- High-grade galena (sulphide) starts at surface and is associated with sphalerite (Zn) and silver (Ag) hosted in andesitic basalts and volcanoclastics.



Camel Hump Cu Prospect Potential VMS Province



Broad widths of Copper Intersected

New copper discovery confirmed with shallow RC results:

- **35m @ 0.55% Cu from 8m (CHRC010)***

Including: **8m @ 1% Cu from 11m &**

- **37m @ 0.46% Cu from 19m (CHRC011)***

Including: **5m @ 0.86% Cu from 22m &**

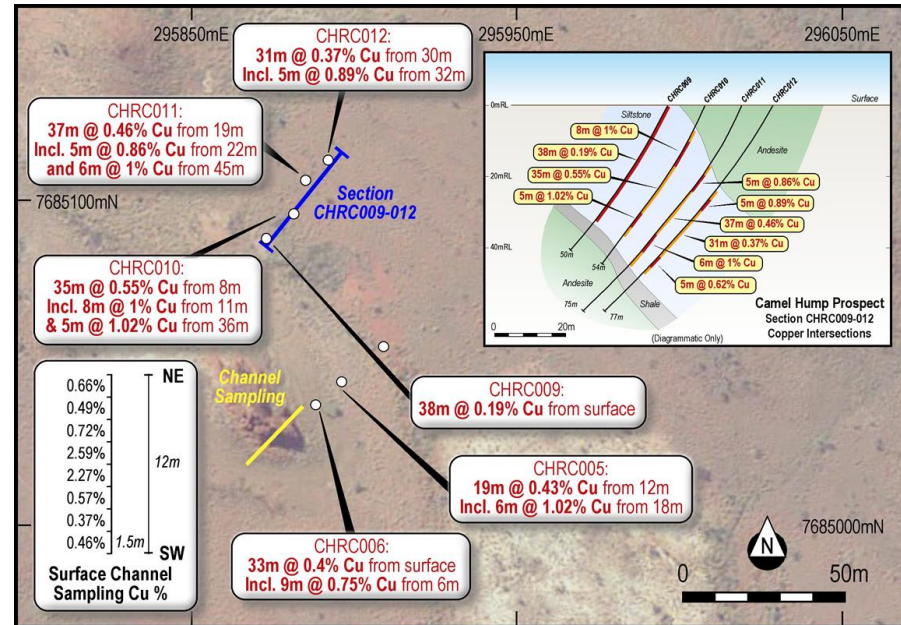
6m @ 1% from 45m

***intersections are true width**

- Six (6) of the eight (8) drill holes returned significant widths of oxidised stringer style malachite, chalcocite and native copper mineralisation
- No previous drilling completed in target region – Completely open

Potential New VMS Province

- Copper mineralisation is hosted in siltstone (volcaniclastic) intercalated with andesite, shale and is associated with zinc, lead and elevated silver
- Mineralisation style is volcanogenic (VMS)
- **Of Importance:** Drilling intersected the potential Copper Footwall stockwork stringer zone which is normally below the main High-Grade VMS Deposit Zone – **See Page 27**



Warroo Project - Large Scale System Potential VMS Province



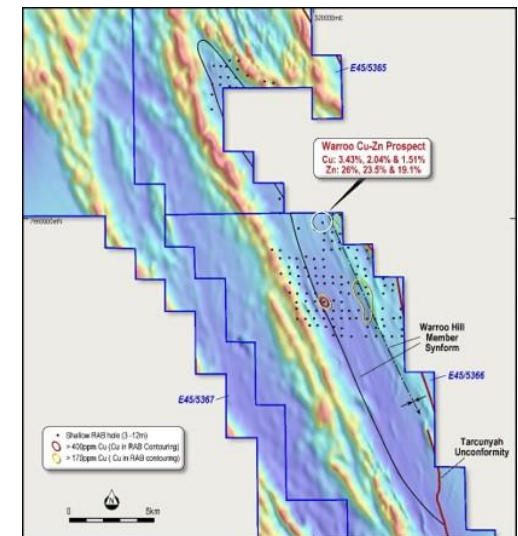
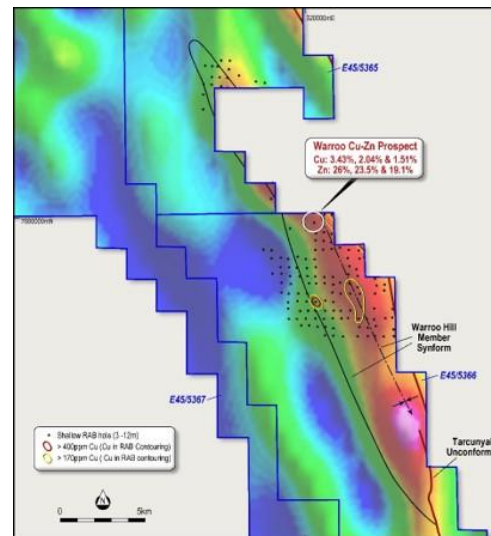
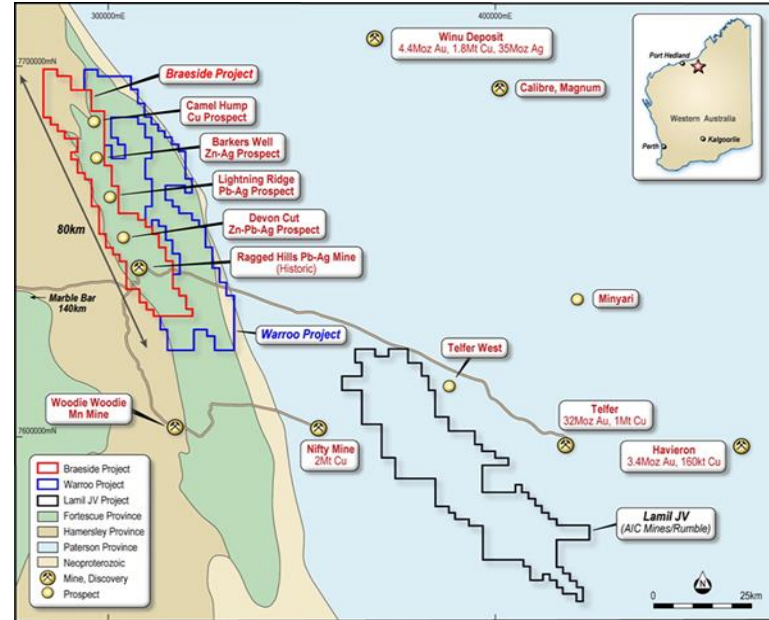
Warroo Project (RTR 100%)

- Copper and zinc anomalism is associated with bimodal (felsic to mafic) volcanics and associated volcanoclastics/sediments of the Warroo Hill Member Synform.
- Over 18km of highly prospective strike under shallow sand cover has been delineated.
- Historic exploration outlined extensive copper and zinc anomalism from shallow broad spaced RAB drilling associated with a large gravity feature.
- Grab sampling returned significant mineralisation at the Warroo Prospect:
 - **Cu assays include – 3.43%, 2.04% and 1.51%**
 - **Zn assays include – 26.0%, 23.5% and 19.1%**

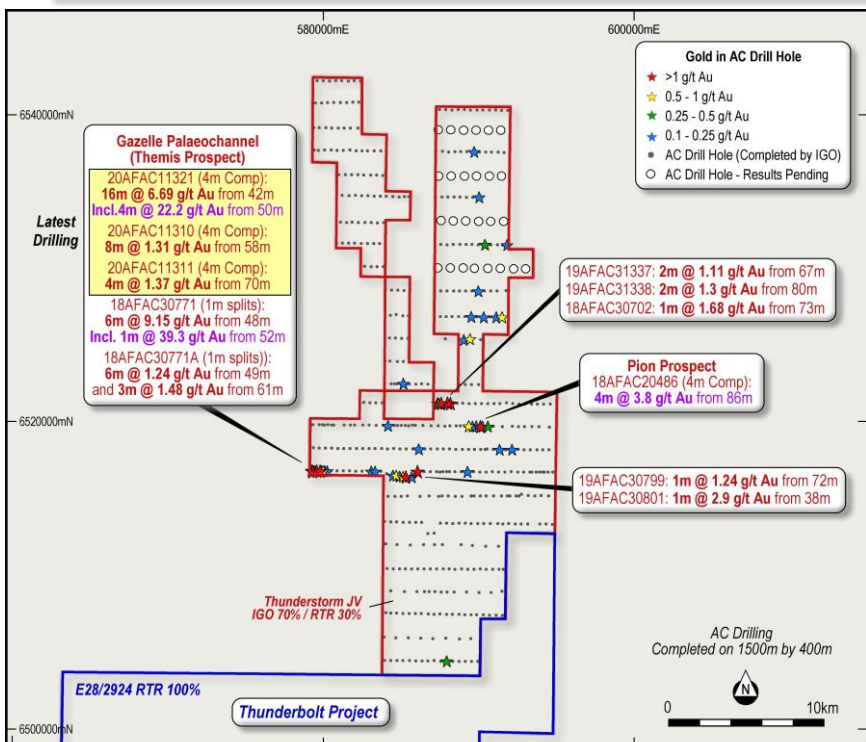
Of high importance:

- The host lithology to the copper mineralisation at Camel Hump has similar characteristics to the Warroo Hill Member lithologies.
- The Camel Hump and Warroo Hill Member lithologies lie within the same corridor with respect to strike and structure.

Potential for a significant new VMS province



Thunderstorm & Thunderbolt Projects – Tier 1 System Themis and Pion Au Prospects

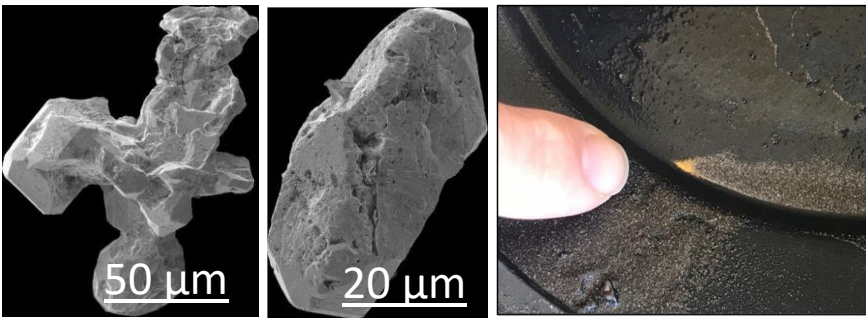


Thunderstorm JV Project (IGO 70% RTR 30%)

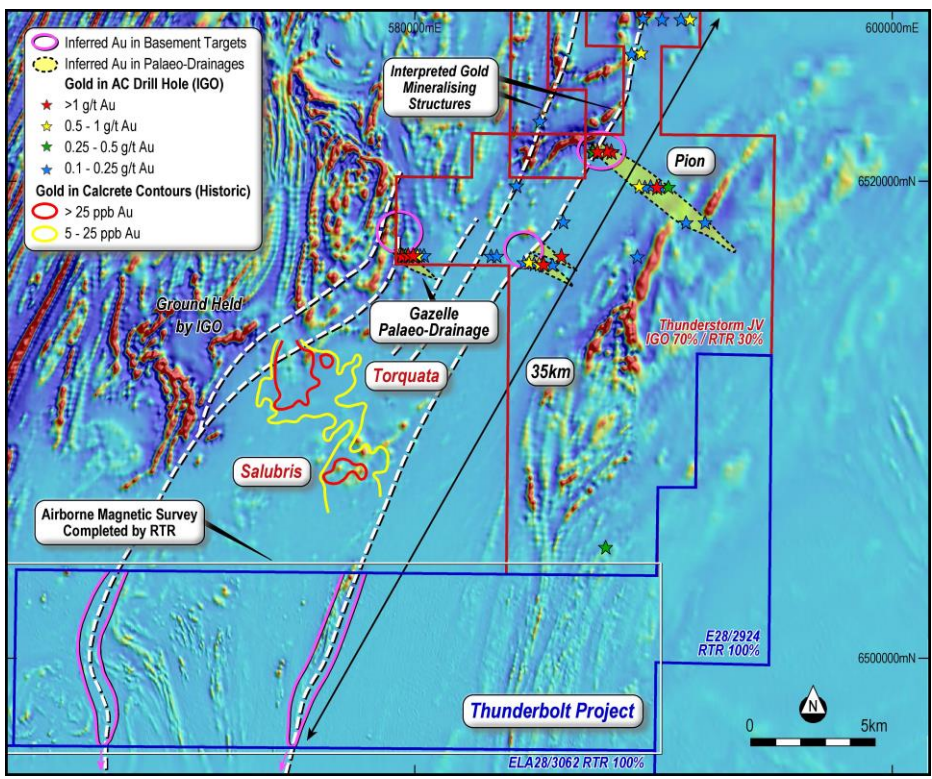
- Reconnaissance AC drilling 1.5km by 400m intersected widespread gold throughout the project including **high-grade gold at Themis:**
 - 16m @ 6.69 g/t Au from 42m (20AFAC11321)
 - 6m @ 9.15 g/t Au from 48m (18AFAC30771)

Thunderbolt Project – (RTR 100%)

- Lies south of and contiguous to the Thunderstorm JV Project



- **IGO Gold Grain Study** - Primary and secondary detrital gold crystals occur indicating High-grade Gold is potentially close to a primary source
- Primary forms have block, crystal, and rod-like shapes with angular edges



Thunderdome JV Project – Tier 1 System Sailfish & Old Soldiers Ni-Cu Prospects



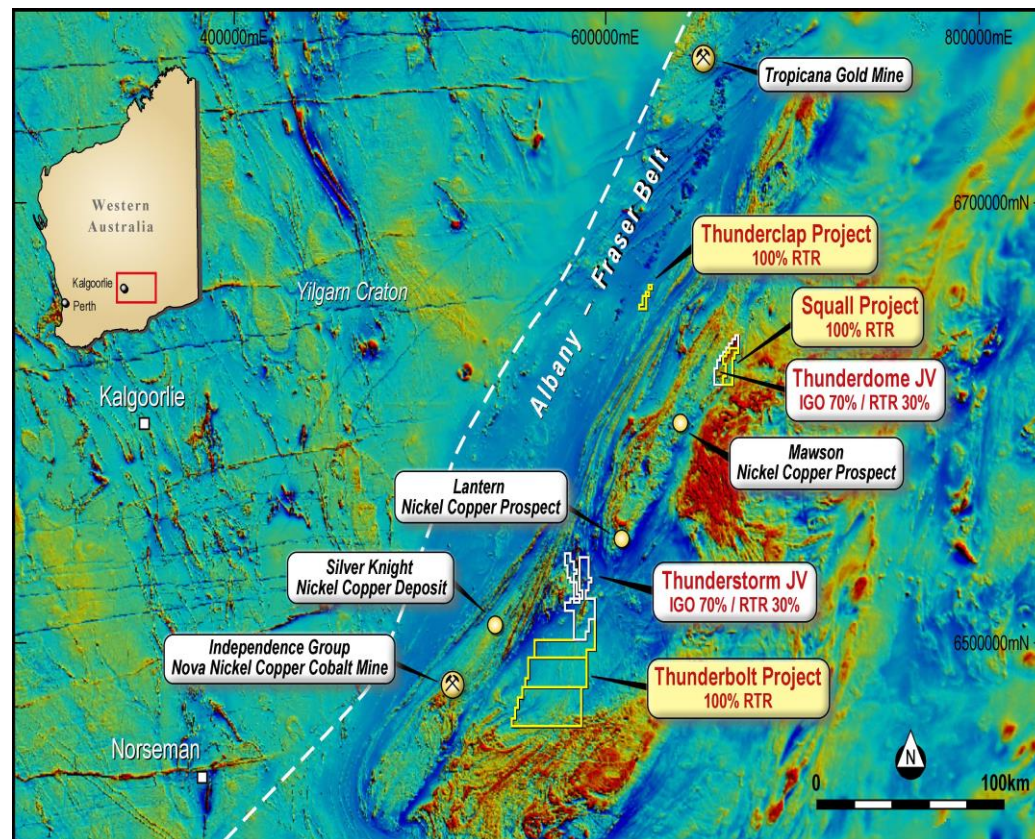
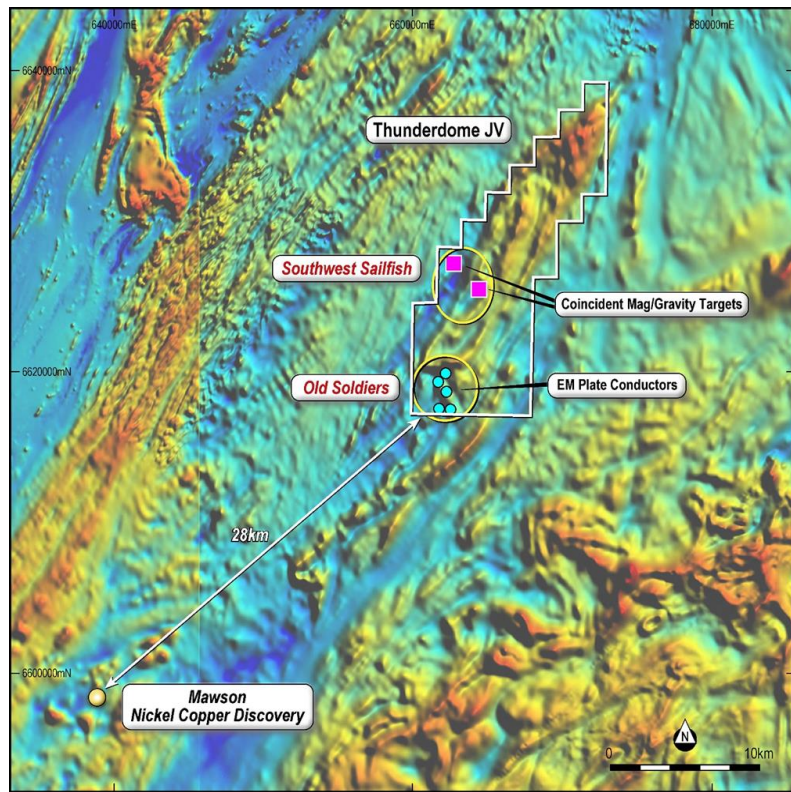
Thunderdome JV Project (IGO 70% RTR 30%)

Sailfish Ni-Cu Prospects

- Magnetic low/gravity high features conceptual targets analogous of Legend Mining’s Mawson Ni-Cu discovery (Located 30km NE along trend)

Old Soldiers Ni-Cu-Zn Prospects

- Multiple EM conductors over a 12km Cu-Zn trend



Albany Fraser Range Province

- World Class Nova Nickel Copper Cobalt Mine
- World Class Tropicana Gold Mine
- Highly sought-after region with new Silver knight and Mawson Discoveries