



Traka Resources Limited

ABN: 63 103 323 173

30 November 2021

Company Announcements Office
ASX Limited
Level 4, 20 Bridge Street
SYDNEY NSW 2000

ANNUAL GENERAL MEETING PRESENTATION

Attached is a copy of a presentation on the company's activities to be made to shareholders at the Company's Annual General Meeting on 30 November 2021.

Authorised by the Board

Peter Rutledge
Company Secretary



2021 Annual General Meeting

Exploring the high-potential Mount Cattlin Gold-Copper Project

AGM Presentation, 30 November 2021 | Patrick Verbeek, Managing Director

ASX: TKL



Disclaimer

This presentation has been prepared by **Traka Resources Limited** ABN 63 103 323 173 (**Traka**) for the sole purpose of providing financial, operational and other information to enable recipients to review the business activities of Traka. This presentation is not intended as an offer, invitation, solicitation or recommendation with respect to the purchase or sale of any securities. Nothing in this presentation should be construed as financial product advice, whether personal or general, for the purposes of Section 766B of the *Corporations Act 2001*.

This presentation may contain forward looking information, statements or forecasts that are subject to risks and other factors outside the control of **Traka**. Any forward looking information, statements or forecasts provided is/are considered reasonable in the circumstances and has/have been prepared in good faith and with all due care, but may differ materially from actual future results and performance. **Traka** and its affiliates, any of its directors, agents, officers or employees do not make any representation or warranty, express or implied, as to or endorsement of the accuracy or completeness of any information, statements or forecasts contained in this presentation, and they do not accept any liability for any statements made in, or omitted from, this presentation.

This presentation should not be relied upon as a representation of any matter that an investor should consider in evaluating the business activities of **Traka**. Investors must make and rely upon their own enquiries and due diligence in relation to the subject of this presentation and an investment in **Traka**. A potential investor must assess the merits or otherwise of an investment in **Traka** having regard to their own personal, financial and other circumstances.

COMPLIANCE STATEMENT RELATING TO TRAKA'S PROJECTS

The information in this report that relates to Exploration Targets, Exploration Results, Mineral Resources or Ore Reserves is based on information compiled by Mr P Verbeek a Competent Person who is a Member of the Australasian Institute of Mining and Metallurgy and is engaged full time as the Managing Director of the Company. Mr Verbeek has sufficient experience that is relevant to the style of mineralisation and type of deposit under consideration and to the activity being undertaking to qualify as a Competent Person as defined in the 2012 Edition of the 'Australasian Code for Reporting of Exploration Results, Mineral Resources and Ore Reserves'. Mr Verbeek consents to the inclusion in the report of the matters based on his information in the form and context in which it appears.

Information included in the presentation is dated 30 November 2021.

2021: Operational Summary

Year in review....



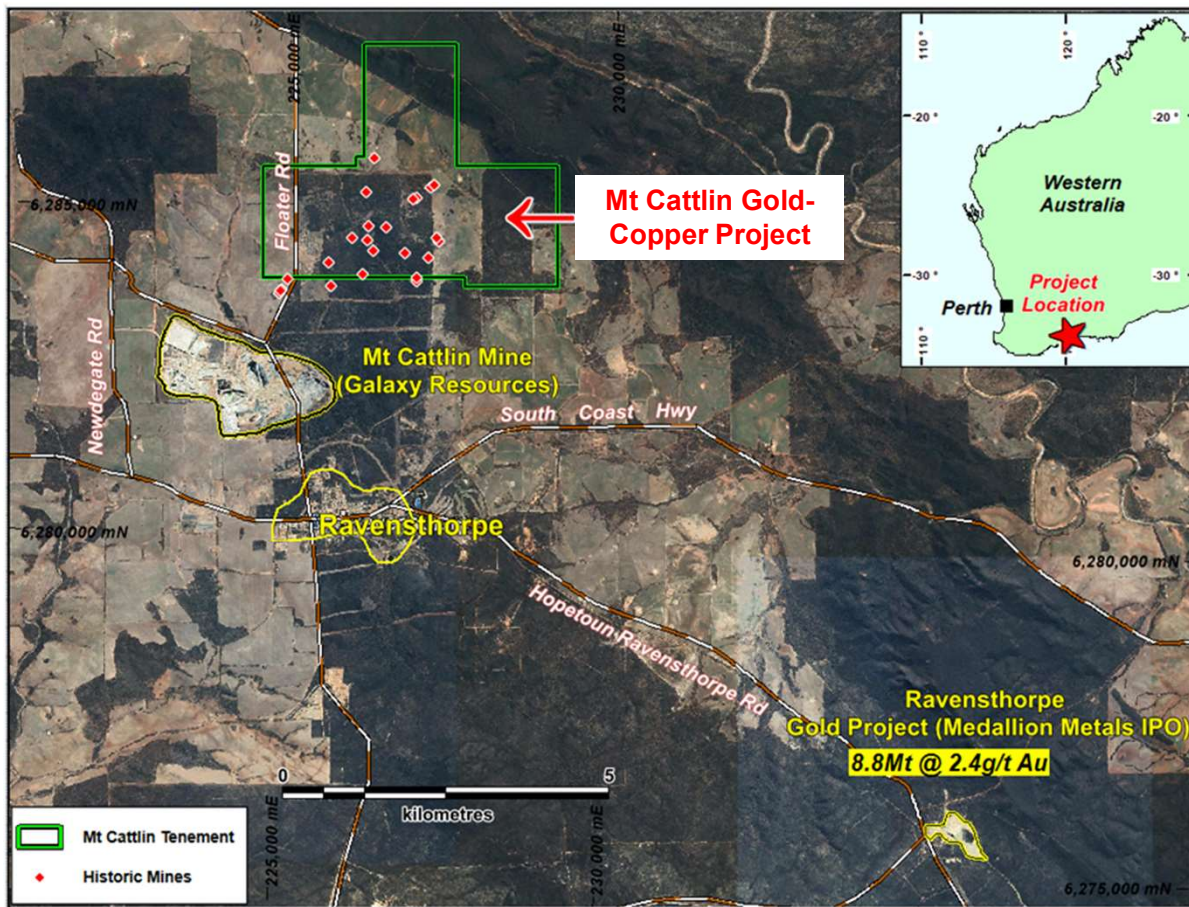
The Mt Cattlin Gold Copper Project remains our core focus with a number of key milestones achieved:

1. All permits to operate in place
2. Maiden gold Resource defined on two prospects
3. 2nd drilling program on new targets nearing completion
4. IP, aeromagnetics and DHEM geophysics completed
5. Extensive geochemical soil programs completed
6. Drill results from current program imminent



Mt Cattlin: Ravensthorpe Greenstone Belt

High-impact exploration in a Tier-1 jurisdiction



- ✓ Proven mining district
- ✓ Excellent existing infrastructure
- ✓ Immediately next to Mt Cattlin Lithium Mine (Galaxy)
- ✓ Galaxy retains the lithium-tantalum rights and Traka the gold and other metal rights
- ✓ **Drilling program nearing completion**



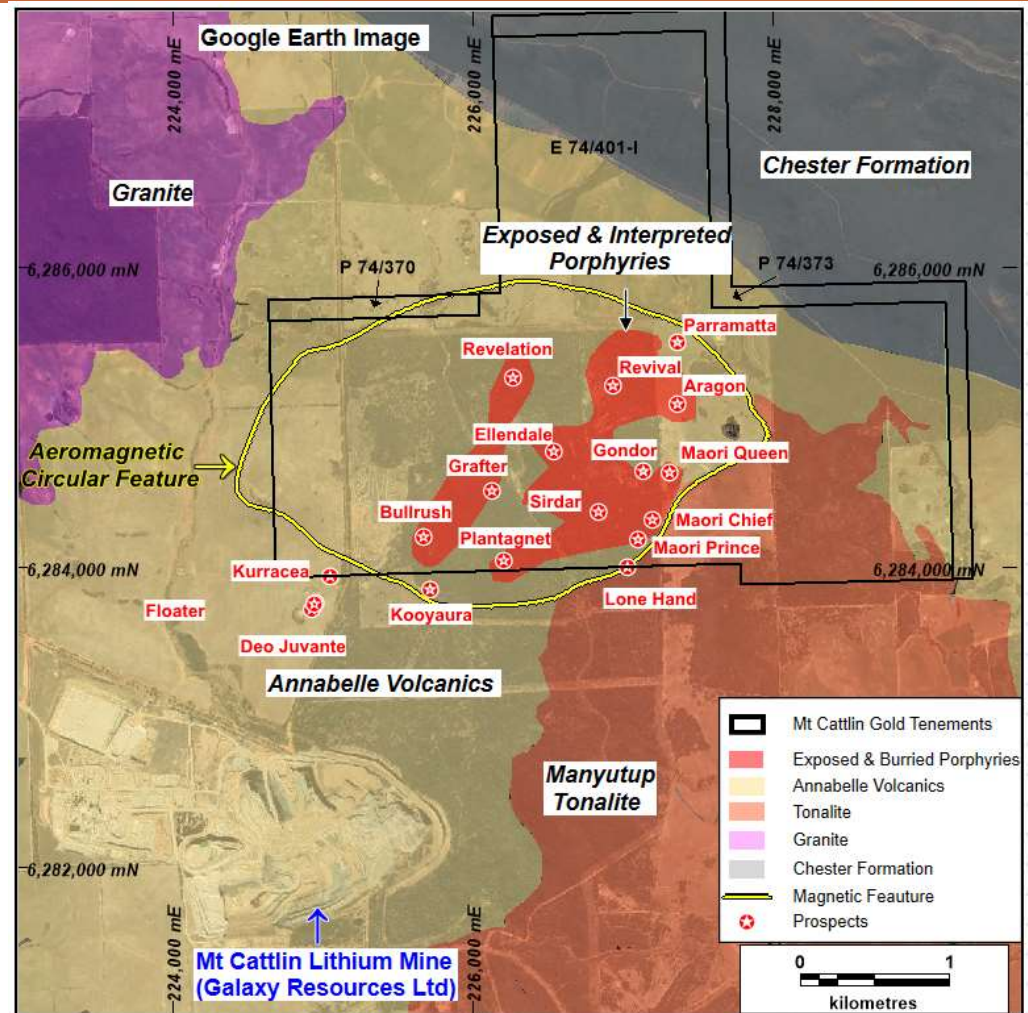
Mt Cattlin Gold-Copper Project

Advanced gold exploration opportunity on a newly-recognised porphyry intrusive-related system

- No exploration between 2004 and 2020
- Long history of gold mining – historical production:
23kt @ 24.56g/t Au from 18 separate mines
- Traka now 1 year into its exploration program
- Identified 3.5km circular porphyry intrusive complex central to tenements, hosting exploration targets and mines
- Maiden JORC 2012 Resource for Maori Queen and Sirdar on just two of a dozen targets:

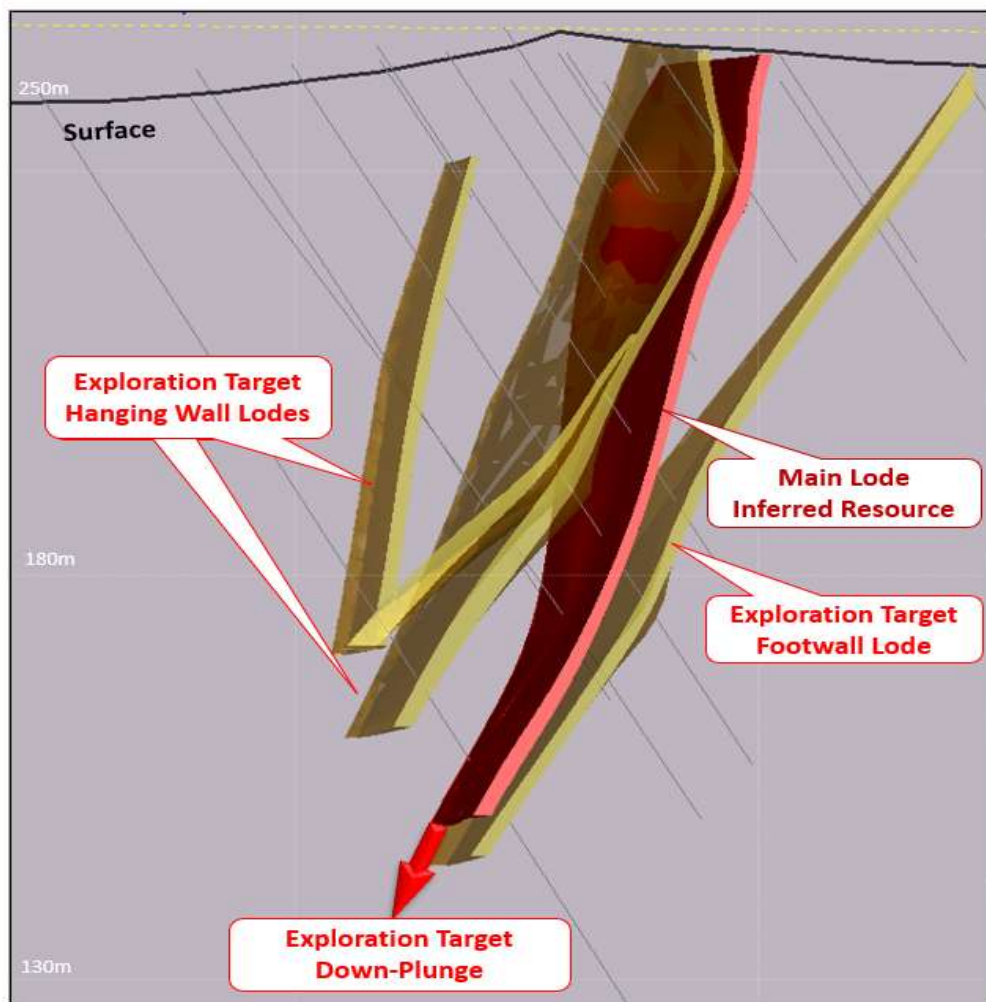
Indicated and Inferred Mineral Resource¹ of 165,094t at 3.94g/t Au for 22,940oz of gold in top 100m

(1) Traka ASX announcement 22 June 2021



Maori Queen – an example of narrow, high-grade mineralisation

Located on a late-stage structure, open in all directions, Exploration Target defined



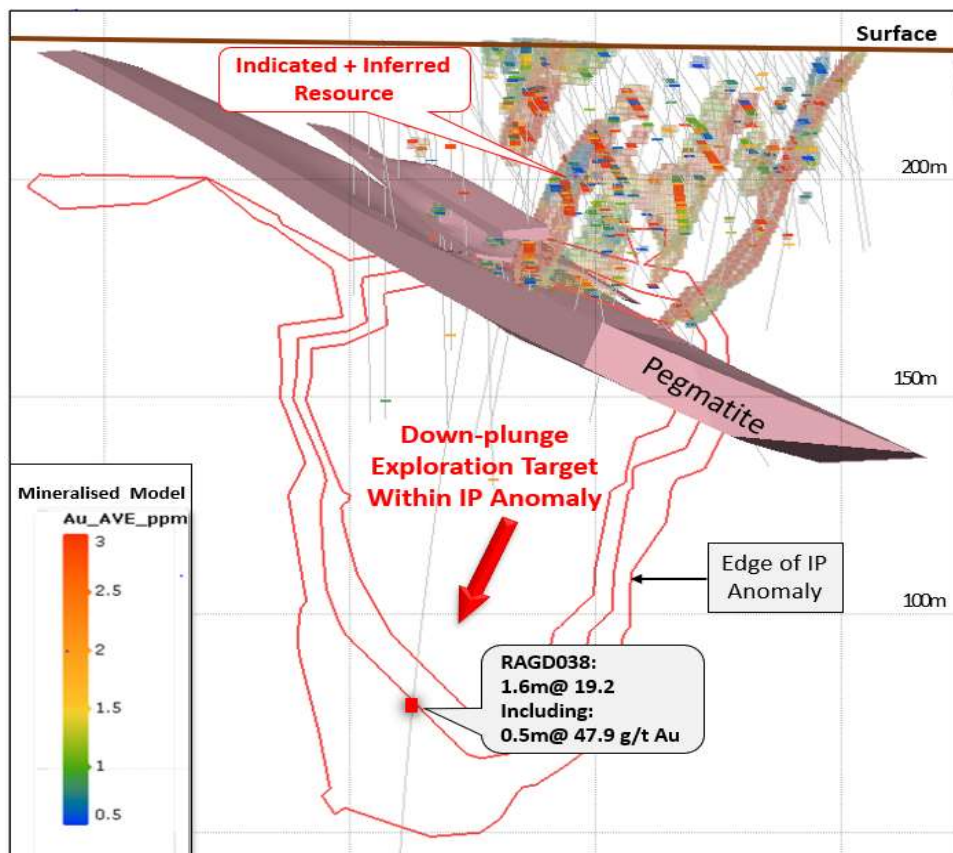
- Inferred Resource – **31,908 tonnes @ 6.19 g/t Au** down to 100m vertical depth ⁽¹⁾
- Exploration Target* extending below Main Lode over next 100m depth – 25,000 to 35,000 tonnes at grades ranging between 5.5g/t and 6.5g/t Au
- Exploration Target* – footwall and hanging-wall lodes to Main Lode to 100m of 130,000 to 150,000 tonnes ranging between 2 to 3 g/t Au

* The potential quantity and grade of Exploration Targets at Maori Queen is conceptual in nature. There has been insufficient exploration to estimate a Mineral Resource. It is uncertain if further exploration will result in the estimation of a Mineral Resource

(1) Traka ASX announcement 22 June 2021

Sirdar – Maiden Mineral Resource

Strong potential for open pit and underground mining



- Indicated and Inferred Resource to 100m depth of **133,186 tonnes @ 3.40g/t Au¹**
- Exploration Target* extending a further 100m depth below Mineral Resource of 120,000 to 160,000 tonnes at a grade of 2.5 – 3.5g/t Au
- Diamond hole RAGD038², drilled 200m under the Resource envelope:
 - **1.6m @ 19.2g/t Au, incl. 0.5m @ 47.9g/t Au**
- Intercept on the edge of a large IP anomaly – follow-up drilling planned

* The potential quantity and grade of Exploration Targets at Maori Queen is conceptual in nature. There has been insufficient exploration to estimate a Mineral Resource. It is uncertain if further exploration will result in the estimation of a Mineral Resource

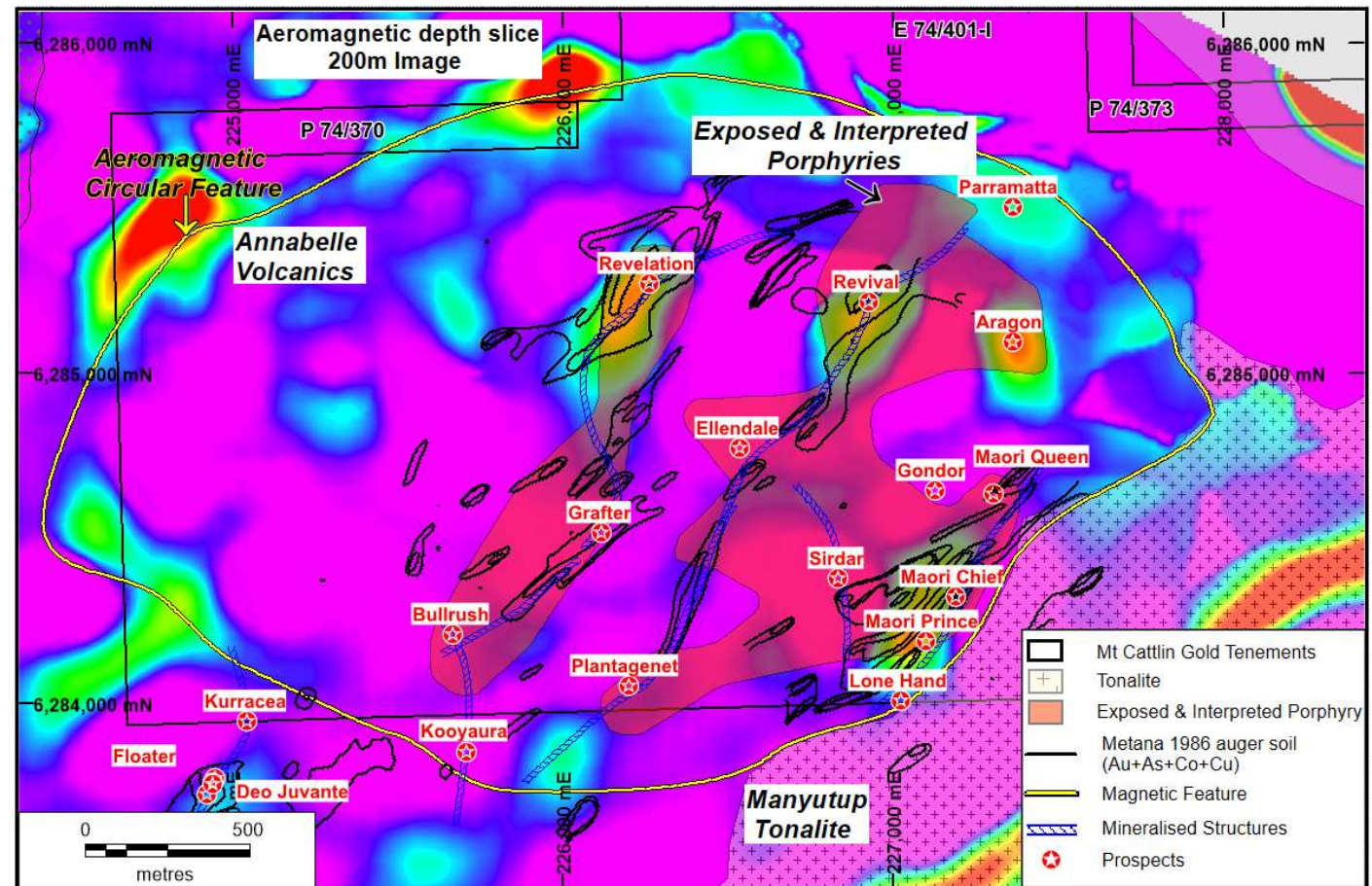
(1) Traka ASX announcement 22 June 2021

(2) Traka ASX announcement 21 April 2021

Mt Cattlin Gold Copper Project – a new chapter emerging?

Large-scale porphyry intrusive potential underlying the historic narrow high-grade gold workings

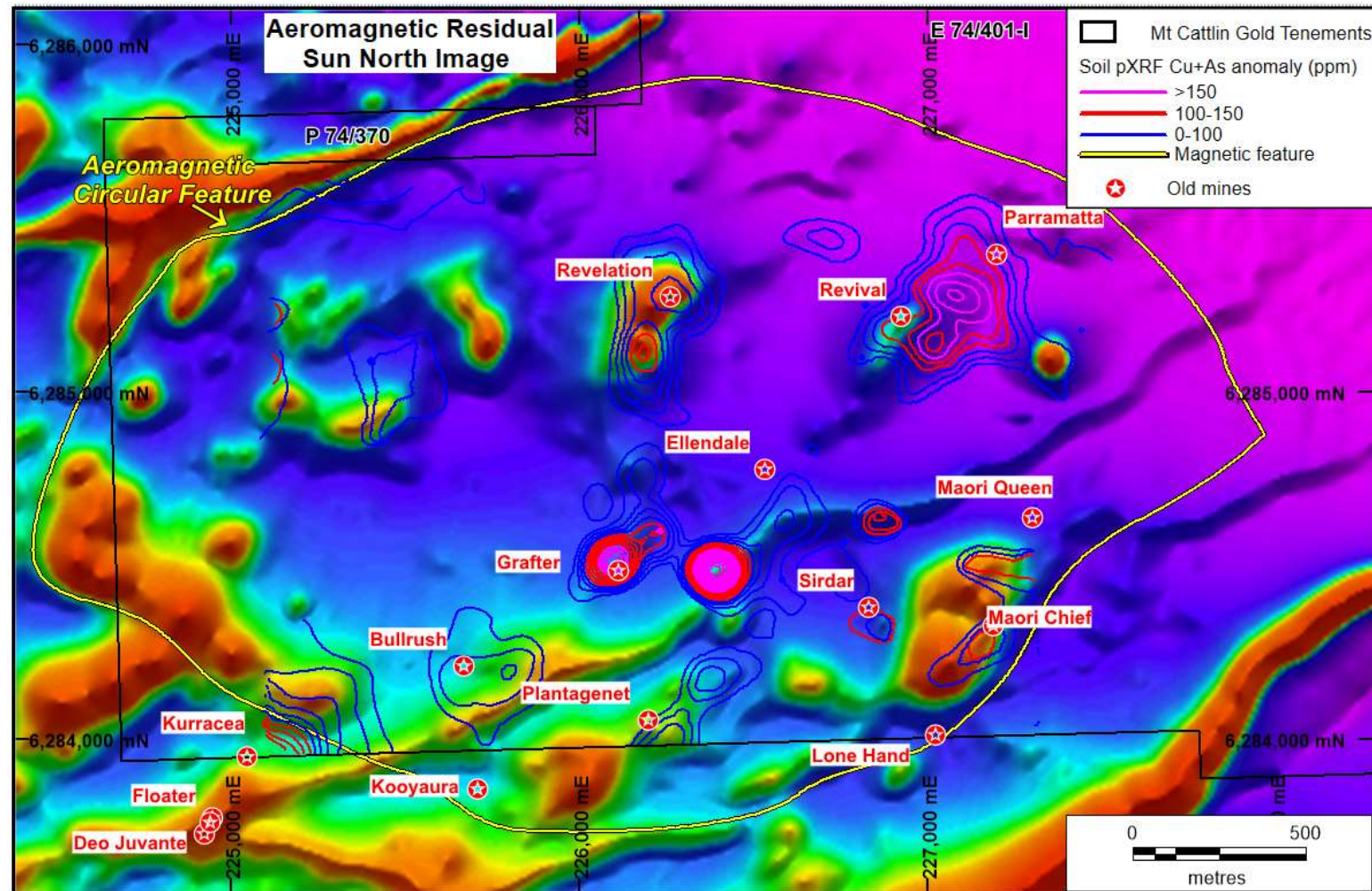
- Centrally-located porphyry intrusive complex
- Late stage north-east orientated structures passing through the intrusive complex
- Historic mining on these structures – gossan and soil geochemistry highlight these targets
- Aeromagnetic and IP highlight the intrusives



Current Drill Program

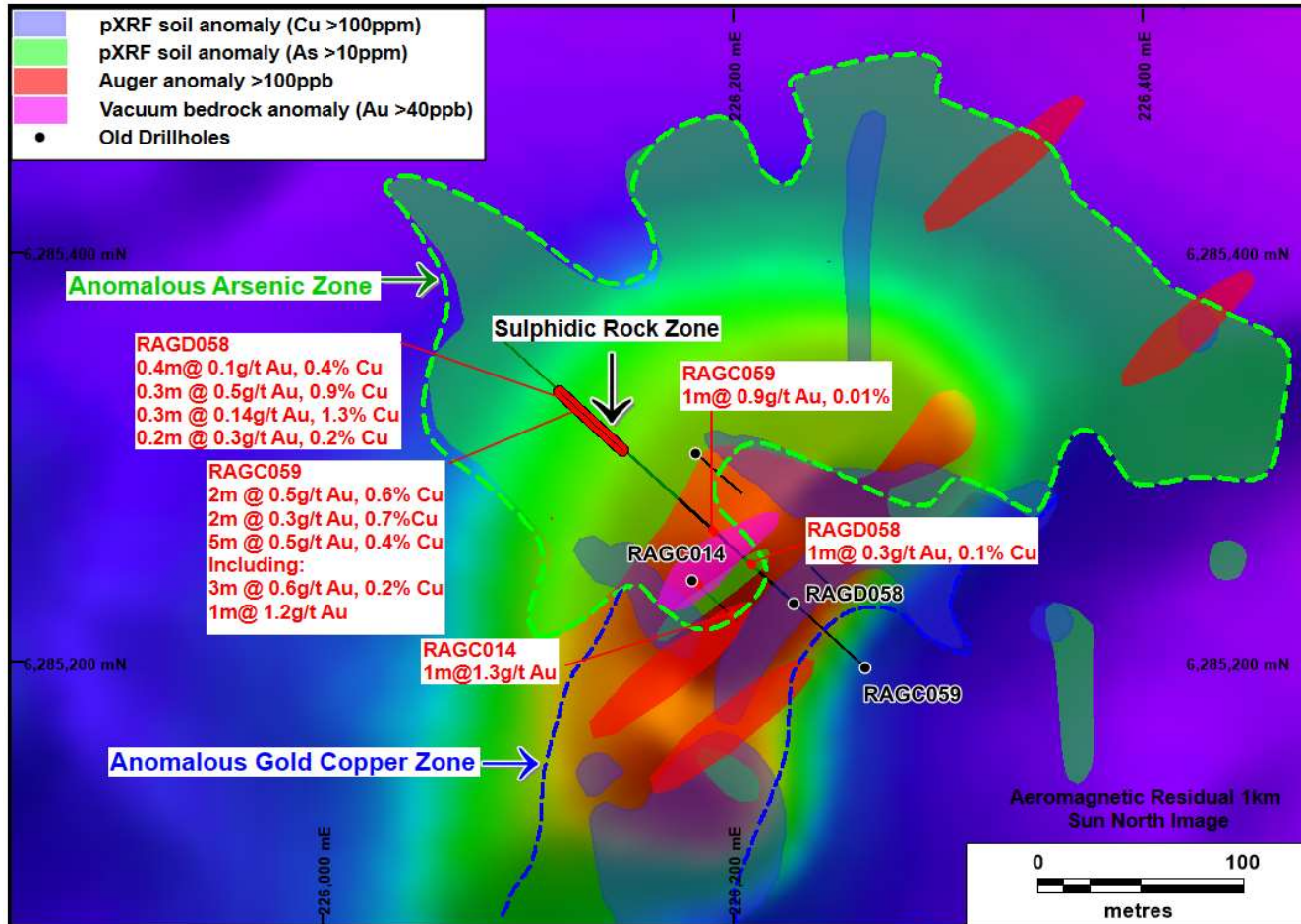
Strong pipeline of additional prospects

- Revelation, Grafter, Ellendale, Plantagenet, Revival, Maori Chief, Maori Prince, Sirdar
- Parramatta and Aragon in wheat crop and may be included in future drill program ?



Revelation Target

500m long coincident aeromagnetic and soil geochemical anomaly

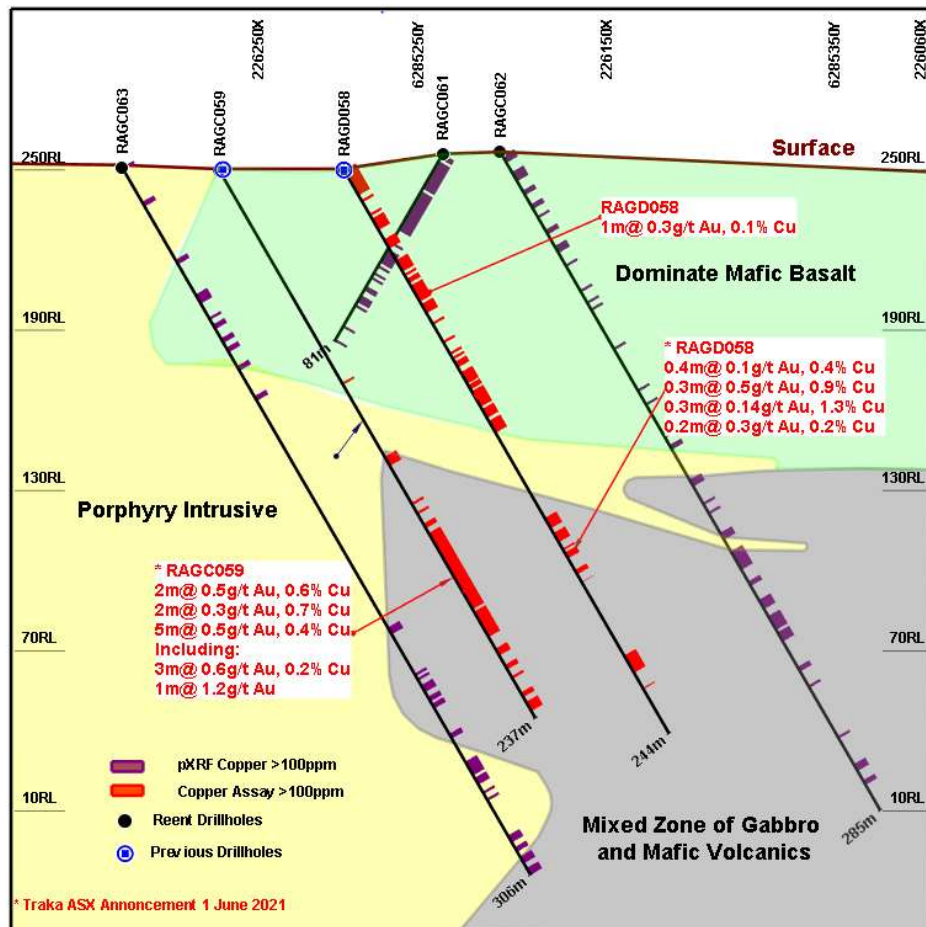


Revelation

- Coincident aeromagnetic and soil geochemical anomaly
- Skarn host rock on the margins of mafic and porphyry intrusive
- Skarns characteristic of porphyry gold copper deposits
- Open in all directions

Revelation Target

500m long coincident aeromagnetic and soil geochemical anomaly



- Drilling still planned
- DHEM survey completed and assays awaited for updated compilation
- Steep highly altered intrusive body (porphyry)

Summary: High-grade gold, with emerging porphyry potential

High-impact exploration programs underway



- ✓ Strong gold-copper endowment with numerous targets identified
- ✓ Round 2 drilling program nearing completion
- ✓ Exploring in a Tier-1 mineral belt with good logistics
- ✓ High-leverage investment opportunity



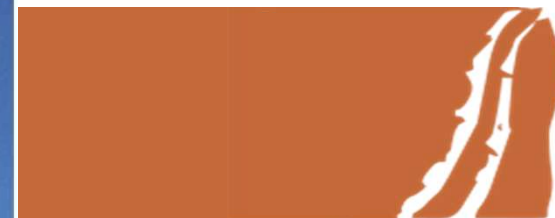
Mineral Resource Table¹ – Mt Cattlin Project



Location	Indicated (t)	Inferred (t)	Grade (g/t Au)	Ounces Au
Maori Queen Main Lode	101,214	31,908	6.19	6,353
Sirdar			3.58	12,781
Sirdar		31,972	2.83	3,191
Sub-Total	101,214	63,880		22,940
Indicated+Inferred	165,094		3.94	22,940
Bottom cut-off grade of 1.0 g/t Au Maori Queen and 0.5 g/t Sirdar				

(1) Traka ASX announcement 22 June 2021





Thank you.

Patrick Verbeek,
Managing Director

ASX: TKL

