



METEORIC RESOURCES

2021 AGM UPDATE

Meteoric Resources NL -

An aerial photograph of a tropical landscape. The foreground shows a cleared area with reddish-brown soil, a dirt road, and a small house. The background is a dense forest of palm trees under a hazy sky.



DISCLAIMER

The material in this presentation has been prepared by Meteoric Resources and is general background information about Meteoric's activities current as at the date of this presentation. This information is given in summary form and does not purport to be complete. Information in this presentation, including forecast financial information, should not be considered as advice or a recommendation to investors or potential investors in relation to holding, purchasing or selling securities or other financial products or instruments and does not take into account your particular investment objectives, financial situation or needs.

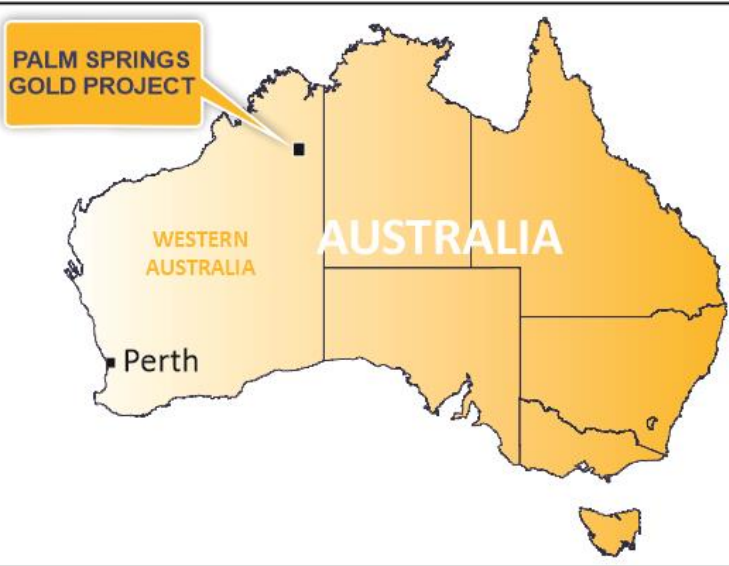
Before acting on any information you should consider the appropriateness of the information having regard to these matters, any relevant offer document and in particular, you should seek independent financial advice. All securities and financial product or instrument transactions involve risks, which include (among others) the risk of adverse or unanticipated market, financial or political developments and, in international transactions, currency risk.

This presentation may contain forward looking statements including statements regarding our intent, belief or current expectations with respect to Meteoric's businesses and operations, market conditions, results of operation and financial condition, capital adequacy, specific provisions and risk management practices. Readers are cautioned not to place undue reliance on these forward-looking statements. Meteoric does not undertake any obligation to publicly release the result of any revisions to these forward-looking statements to reflect events or circumstances after the date hereof to reflect the occurrence of unanticipated events. While due care has been used in the preparation of forecast information, actual results may vary in a materially positive or negative manner. Forecasts and hypothetical examples are subject to uncertainty and contingencies outside Meteoric's control. Past performance is not a reliable indication of future performance.

Competent person statement

The information in this announcement that relates to mineral resource estimates and exploration results is based on information reviewed, collated and fairly represented by Mr Peter Sheehan who is a member of the Australasian Institute Of Mining And Metallurgy and a consultant to Meteoric Resources NL. Mr Sheehan has sufficient experience relevant to the style of mineralisation and type of deposit under consideration, and to the activity which has been undertaken, to qualify as a competent person as defined in the 2012 edition of the Joint Ore Reserves Committee (JORC) Australasian code for reporting of exploration results, mineral resources and ore reserves. Mr Sheehan consents to the inclusion in this report of the matters based on this information in the form and context in which it appears.

GROWING FOOTPRINT AUSTRALIA – BRAZIL



Palm Springs – Halls Creek W.A
Historic Mine 50K oz Produced in 1990s¹
Classic Proterozoic Orogenic Gold

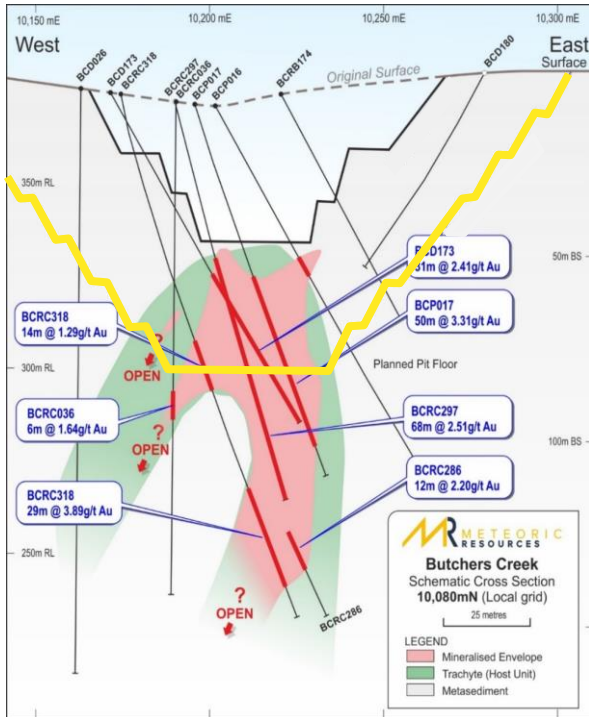


Juruena – Northern Mato Grosso
Garimpo production 1980's approx. 500k oz²
Low sulfidation epithermal gold & Porphyry copper-gold

AUSTRALIA – PALM SPRINGS



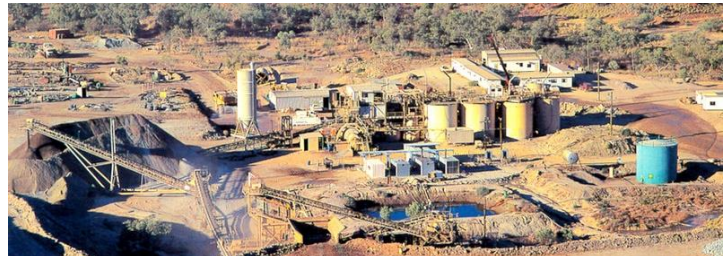
PALM SPRINGS GOLD PROJECT BUTCHERS CREEK



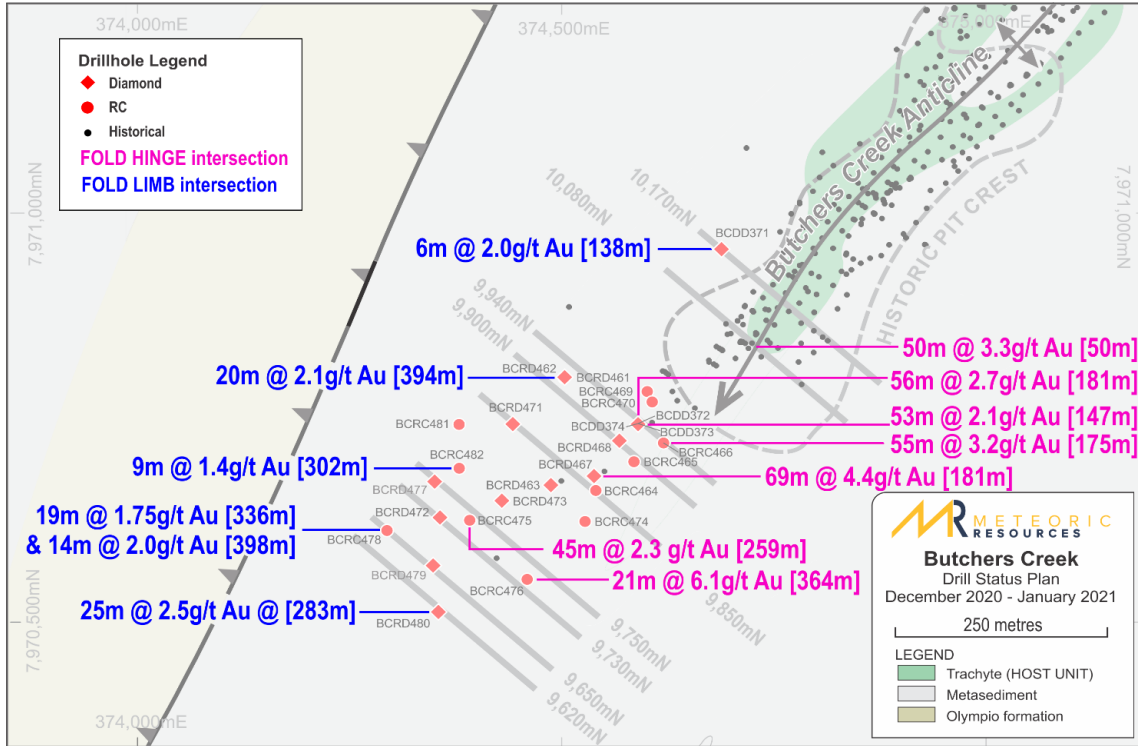
- Abundant ore remains in the floor of the southern end of Butchers Creek Pit
- The orebody is completely open at depth and down plunge to the south
- The entire prospect lies with granted Mining Leases from the early 1990's

ALSO

- 9Mt Tailings Dam remains with abundant capacity
- Excellent Metallurgy with > 90% recoveries
- 60 other gold occurrences across the new package



DRILLING RESULTS



2021 PSGP JORC RESOURCE

Deposit	Lower Cut-off (g/t)	Resource Classification	Tonnes (Mt)	Gold Grade (g/t)	Contained Gold (oz)
Butchers Creek	0.8	Indicated	1.9	2.2	139,000
	0.8	Inferred	3.3	1.7	180,000
Sub-total		Ind + Inf	5.2	1.9	319,000
Golden Crown	0.8	Inferred	0.4	3.1	38,000
PSPG Global Resource			5.6	2.0	357,000

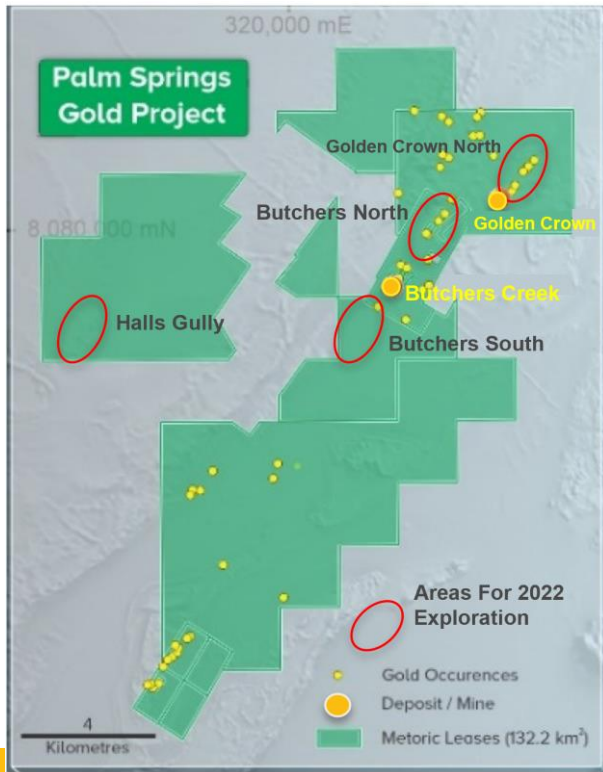
Resource based on a combination of existing historical drilling and 2020 drilling by Meteoric.

Mineral Resource Estimated by Aurelia Mining Consulting – Perth.



2022 EXPLORATION

NEW DISCOVERIES & BUTCHERS CREEK EXTENSIONS



2022 – Scoping Study Reports – Q1 2022

- Preliminary Metallurgy
- Open Pit and UG designs

2022 Exploration Plans – Q2 2022

• Geophysics

- Ground IP survey south of Butchers
- Aerial geophysics

• Drilling Q2 & 3 2022

- Butchers South – Resource Extension
- Butchers North – Syenite Targets
- Golden Crown North – Resource Extension
- Halls Gully
 - ❖ a large Au in rock chip anomaly associated with the Halls Creek Fault



BRAZIL - JURUENA



DRILLING RESULTS¹

High Grade Gold

JUDD001 – 20.5m @ 94.9 g/t Au from 97m

JUDD008 – 14m @ 87g/t Au from 141m

JUDD031 – 14.3m @ 10.2 g/t Au from 307m

JUDD028 – 2.4m @ 38.8 g/t Au from 216m



Copper Gold Intercepts

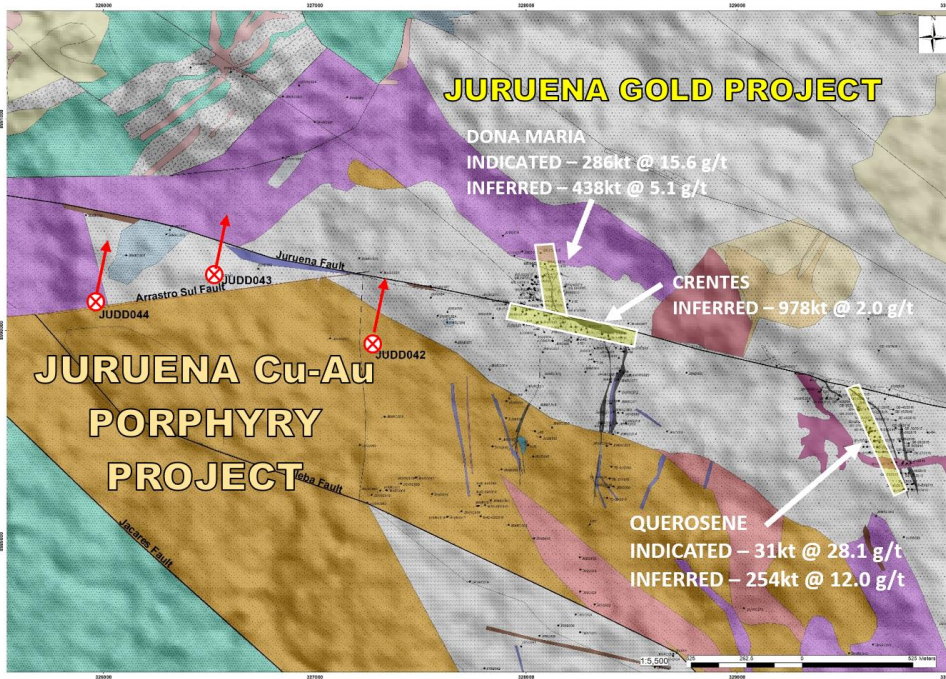
JUDD024 – 6.7m @ 20.3 g/t Au & 1.86% Cu from 101m

JUDD039 – 51m @ 1.4 g/t Au & 0.25% Cu from 118m

JUDD031 – 11m @ 2.34 g/t Au & 0.28% Cu from 42m



BRAZIL – JURUENA



2021 JURUENA JORC RESOURCE

June 2021 Mineral Resources													
Country	Project	Deposit	Cut-Off (g/t Au)	Indicated Resource			Inferred Resources				Total Resource		
				Dry Tonnes	Grade (g/t Au)	Insitu Gold (oz)	Dry Tonnes	Grade (g/t Au)	Insitu Gold (oz)	Dry Tonnes	Grade (g/t Au)	Insitu Gold (oz)	
Brazil	Jurueña	Dona Maria < 100m depth	0.8	125,000	11.0	44,000	164,000	2.8	15,000	289,000	6.3	59,000	
		Quereosene < 100m depth	0.8	25,000	27.4	22,000	151,000	13.5	65,000	176,000	15.4	87,000	
		Crentes < 100m depth	0.8	-	-	-	897,000	1.9	54,700	897,000	1.9	54,700	
		Sub total < 100m	0.8	150,000	13.7	66,000	1,212,000	3.5	134,700	1,362,000	4.6	200,700	
		Dona Maria > 100m depth	2.5	130,000	16.2	84,000	274,000	6.4	57,000	404,000	10.9	141,000	
		Quereosene > 100m depth	2.5	6,000	13.5	6,000	103,000	13.6	33,000	109,000	11.1	39,000	
		Crentes > 100m depth	2.5	-	-	-	46,000	4.2	6,200	46,000	4.2	6,200	
		Sub total > 100m	2.5	136,000	20.6	90,000	423,000	7.1	96,200	559,000	10.4	186,200	
JURUENA TOTALS				286,000	17.0	156,000	1,635,000	4.4	230,900	1,921,000	6.3	386,900	

Resource based on a combination of existing historical drilling and 2019 & 2020 drilling by Meteoric

Mineral Resource Estimated by Trepannier Pty Ltd - Perth



SCOPING STUDY

GE 21 Brazil updating 2017 Big River Gold Scoping Study

- Resource verification and validation
- Pit optimization and design
- Slope Optimisation and UG design
- Mining Schedule
- Fleet sizing - Mine CAPEX and OPEX
- Plant description - Plant CAPEX and OPEX
- Economic Analysis
- **SCOPING STUDY RESULTS Q1 2022**



Serabi Gold TSX:SBI - Paulito Mine

300km NW of Juruena

State of Para 40,000 Oz pa

SUMMARY



Company has established a strong resource base across 2 continents – Global Resource

7,521,000 t @ 3.1 g/t for 744,000 oz of Au



Scoping study under way
Mining Licence Applications Imminent



Scoping Study underway
Strong exploration season planned for 2022

