



4 Discovery-ready Projects in some of WA's most prolific mineral regions

Company Presentation - December 2021

ASX:BPM

4 DISCOVERY-READY PROJECTS

Groundwork completed paving way for exciting 2nd year

1. HAWKINS LEAD-ZINC PROJECT

- Signed Heritage and access agreement with Traditional Owners – tenement grant expected within weeks
- Exploration and drilling to commence early 2022 in an emerging Pb-Zn-Ag district
- Historical scout drilling intercepted Pb-Zn mineralisation ~40m in the Frere/Yelma unconformity - similar to RTR's Chinook¹.

2. SANTY GOLD PROJECT

- Phase-1 aircore drilling outlined 2.2km-long gold anomalous zone
- Phase-2 drilling Q2 2022

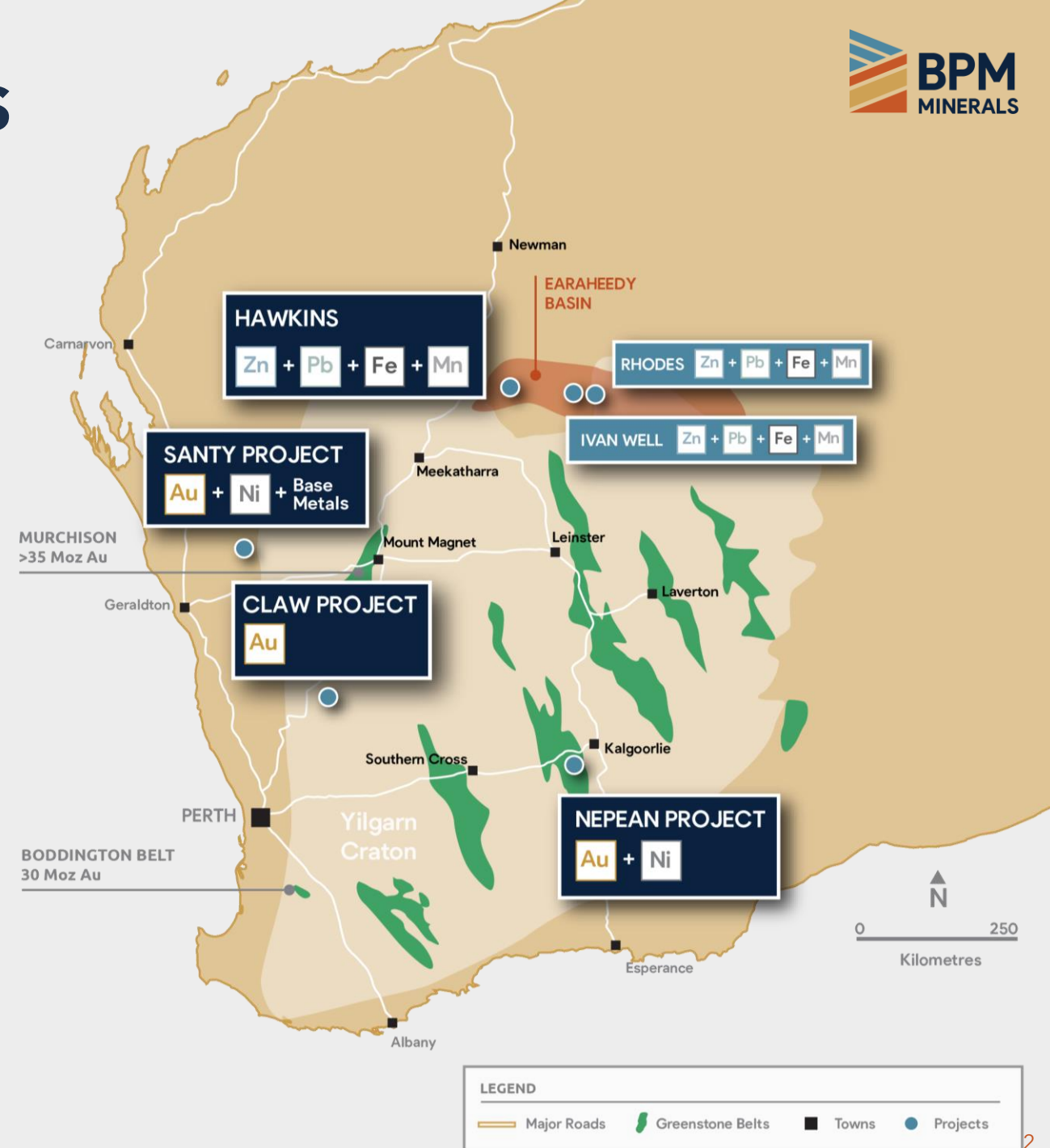
3. NEPEAN NICKEL-GOLD PROJECT

- MLEM survey underway, results expected January 2022

4. CLAW GOLD PROJECT

- Aeromagnetic Survey completed
- Chickie and Lewi drill-ready targets identified
- Access agreements progressing

¹Rumble Resources is an ASX listed company (RTR) that announced a "Major Zinc-Lead Discovery at Earaheedy Project" (19th April 2021) ~250m.



DRIVING WESTERN AUSTRALIA'S NEXT DISCOVERY

Corporate Overview



PAUL LLOYD

Non-Executive Chairman

Currently Managing Director of Arizona Lithium (ASX:AZL), a US-focused Lithium explorer, Mr Lloyd has been responsible for a number of successful IPOs, RTOs, project acquisitions and capital raisings for ASX-listed public companies.



CHRIS SWALLOW

Chief Executive Officer

15 years' experience across both public and private sectors. Mr Swallow most recently worked in an operational capacity as the Corporate Development Officer for Guinea-focused gold explorer Predictive Discovery Limited (ASX:PDI).



OLIVER JUDD

Exploration Manager

An exploration geologist with more than 15 years' experience with precious and base-metals with Talisman, OMNI GeoX, Capricorn and Dreadnought. He is a Member of AusIMM.



GREG SMITH

Non-Executive Director

Exploration manager for Moto Gold Mines Ltd, responsible for the discovery of 22.5 million ounces of gold in the Democratic Republic of Congo (Kibali Mine). He is a Member of AusIMM.



EMMANUEL CORREIA

Non-Executive Director

Founding director of Peloton Capital and Peloton Advisory and has over 25 years' public company and corporate finance experience.

CAPITAL STRUCTURE

49.06m

SHARES ON ISSUE

38.4m

OPTIONS @ 0.20c
exc. (2025)

\$4.55m

CASH at 1 Dec 2021

\$11.2m

MKT CAP at 22.5cps

\$6.65m

ENTERPRISE VALUE

Earaheedy Basin Projects

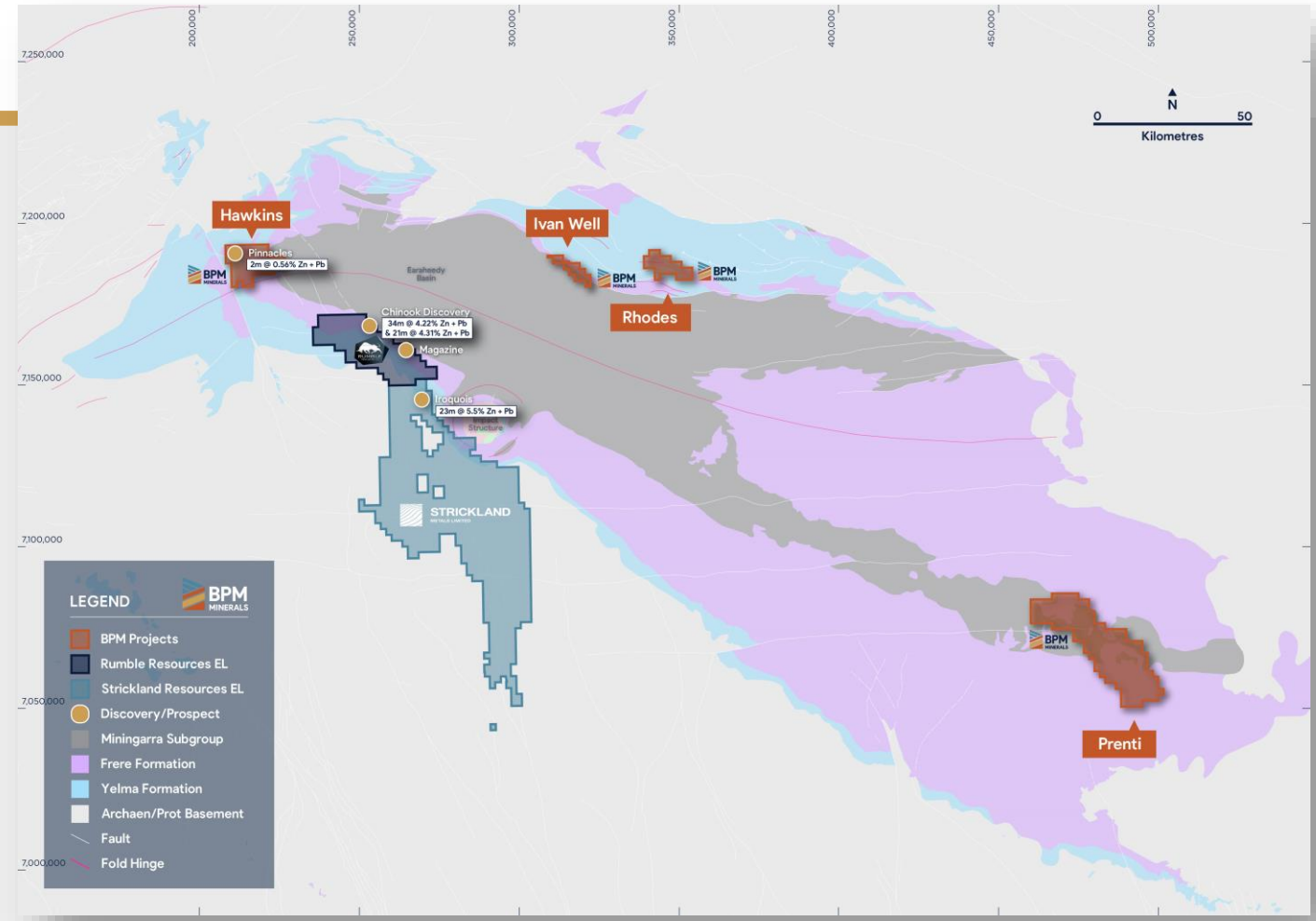
RTR and STK Discoveries confirm Earaheedy as a rapidly developing region for large Zn-Pb discovery

TENURE AND LOCATION

- 835km² landholding with historical Pb-Zn mineralisation identified in limited historical scout drilling
- Located ~40km NW of the Rumble Resources (ASX:RTR) Chinook lead-zinc discovery
- Signed Heritage and access agreement with Traditional Owners paves way for Hawkins tenement grant within weeks

GEOLOGY AND EXPLORATION TARGET

- RTR results confirm a SEDEX-type deposit, usually found in multiple basin locations
- Recent Iroquois discovery by STK (23m @ 5.5% Pb+Zn¹ deeper within basin highlighting the potential of the basin for further discoveries¹



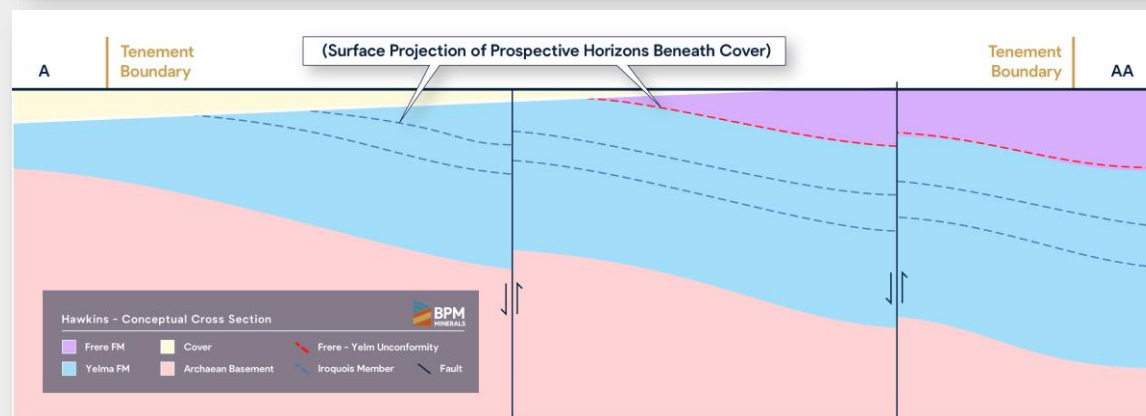
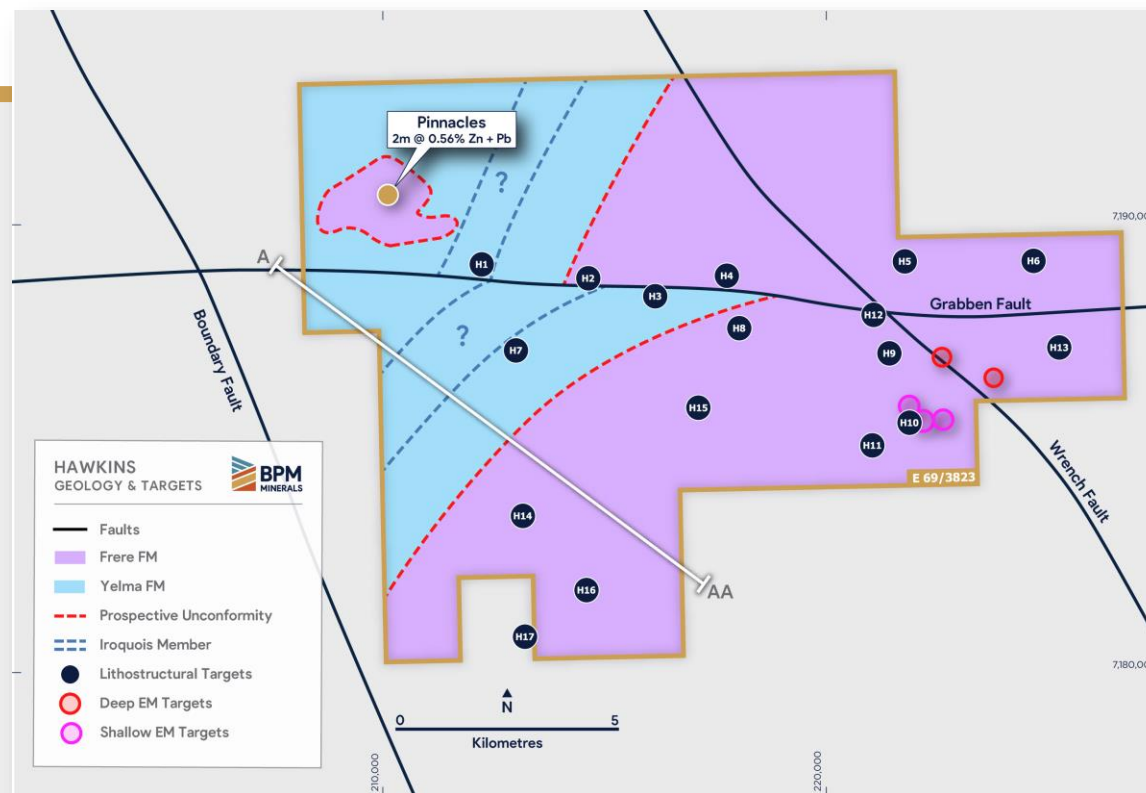
HAWKINS PROJECT

SETTING & HISTORICAL EXPLORATION

- Prospective for both Chinook style Frere-Yelma unconformity mineralisation and Iroquois-style carbonate hosted mineralisation
- Peak historical result (RGC Exploration 1990's) from Pinnacles Prospect returned 2m @ 0.25% Zn and 0.31% Pb (HRC12)¹

TARGETS & UPCOMING WORK PROGRAM

- ~40km of prospective strike for both Chinook and Iroquois style mineralisation
- Drilling fast-tracked to commence early Q2 2022 testing surface projection of key prospective horizons
- Aeromagnetic interpretation has identified 17 litho-structural targets associated with key fundamental structures
- Review of historical VTEM data has identified several conductive anomalies potentially related to sulphide accumulations
- Earaeheedy Lead-Zinc potential bolstered by recent Strickland Metals (ASX:STK) high-grade Zn-Pb discovery with new Iroquois mineralised stratigraphic horizon found deeper in the system



¹ASX Announcement - BPM to acquire three projects in the Earaeheedy basin and complete placement [19 May 21]

SANTY PROJECT

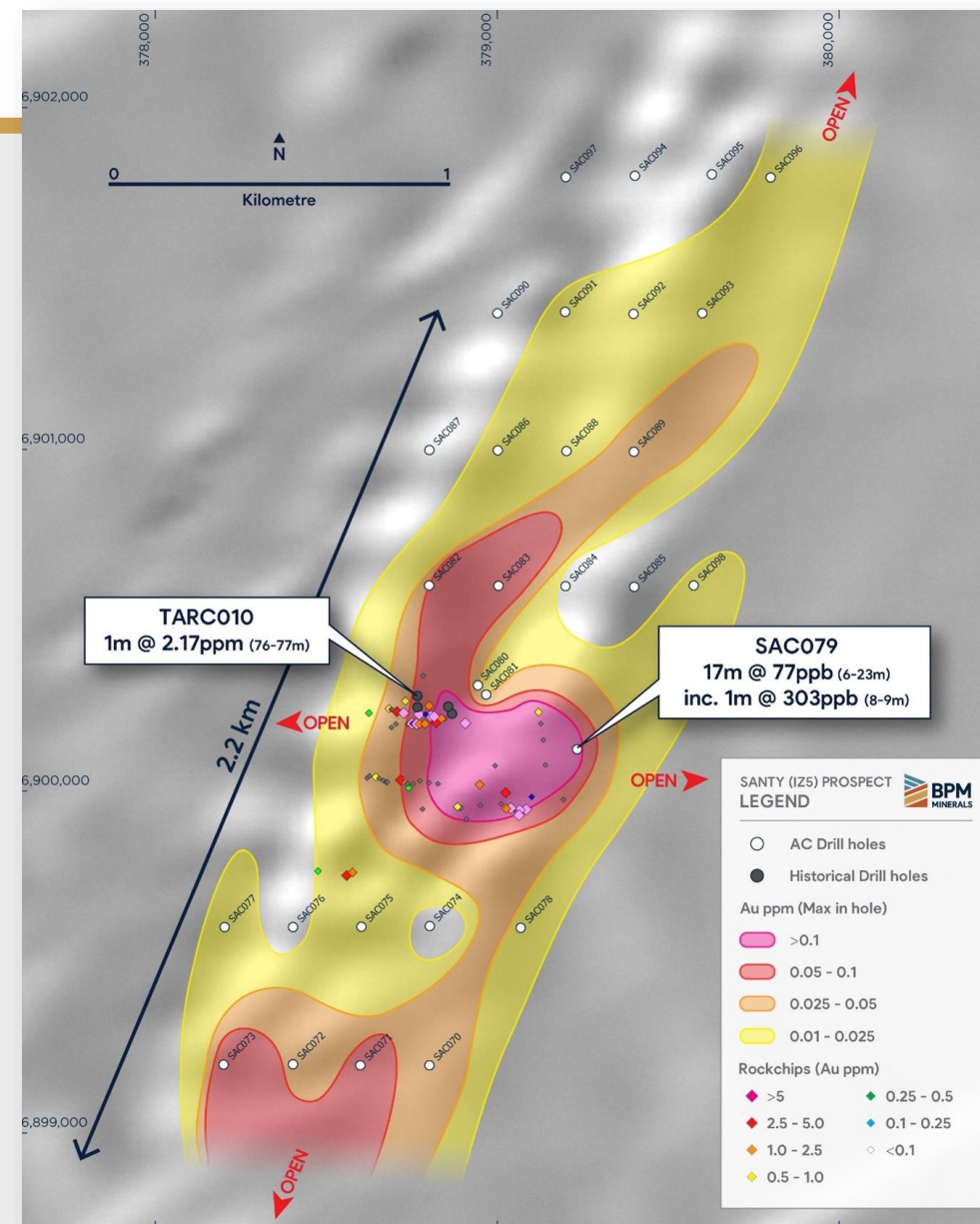
Phase-1 Drilling Completed, Results Imminent

TENURE AND GEOLOGICAL SETTING

- 663km² project area
- Located in the Talling Greenstone belt
- 80% of Project area under cover

EXPLORATION AND PLANNED WORK

- Phase-1 AC drill program completed, outlining a 2.2km-long gold anomalous zone
- Chip logging confirmed important geological features, including wide zones of sulphides, comparable to adjacent gold projects within the Santy Gold Project area
- Encouragingly, with most of the Santy Project under a complex sequence of cover, gold mineralisation was intersected in both weathered and fresh rock
- Drilling at UM1 intersected anomalous levels of Nickel, Cobalt and Platinum Group Elements (PGE's), highlighting the potential for Julimar-style ultramafic intrusive mineralisation



¹Source (Diagram): ASX Announcement - Santy Aircore Results Define 2.2km-Long Gold Anomaly (25 November 2021)

SANTY PROJECT

Phase-2 in 2022

PLANNED WORK

- Detailed drone magnetic survey - January 2022 (IZ5, IZ6, Z7 & IZ8 prospects)
- Heritage Survey - Feb 2022
- **Phase 2 AC drilling** - Q2 2022 (120 AC holes for 5,000m)
- **RC Drilling** - Q4 2022

"Our work at Santy is just in its infancy, but we are excited by the opportunity and believe the Project has all the hallmarks for a potential gold discovery" - **BPM CEO Chris Swallow**

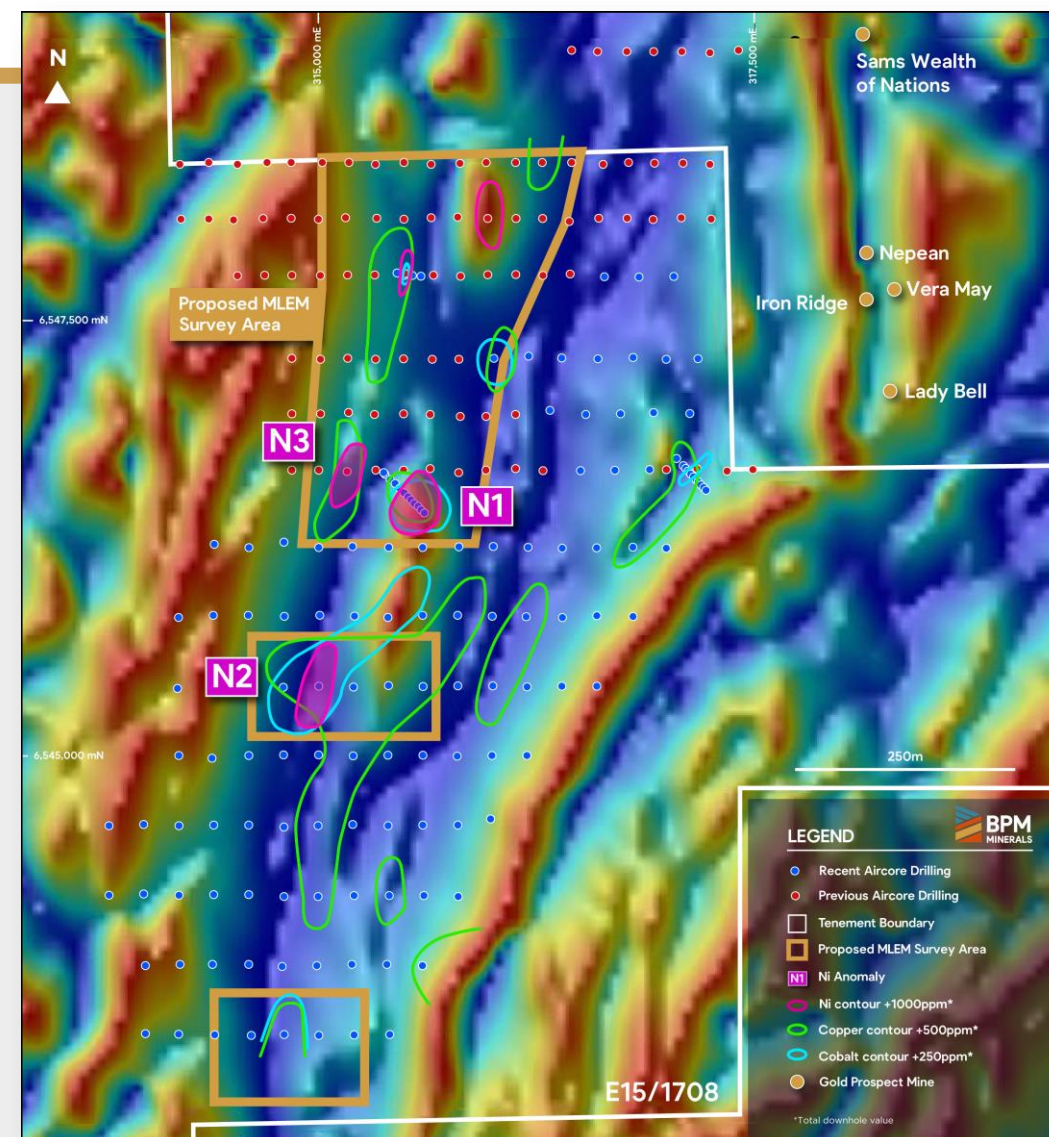


NEPEAN PROJECT

Less than 2km from world-class nickel mine

DRILL READY TARGETS FALLING OUT OF INITIAL WORK

- Located <2km south of the historic Nepean nickel Mine (ASX: AOU) that produced 32,303 tonnes of mined nickel at an average recovered grade of 2.99% nickel¹
- Nepean Project underlain by geology similar to the Nepean nickel Mine
- Prospective for both greenstone-hosted gold deposits and nickel sulphide deposits
- Phase-1 drilling program identified ultramafic rocks, potentially fertile for nickel sulphide mineralisation²
- MLEM survey completed Dec 2021
- RC-ready targets currently being generated



¹ AOU Announcement - Intersections of over 5% Ni extend high-grade mineralisation at Nepean (15 Feb 2021)

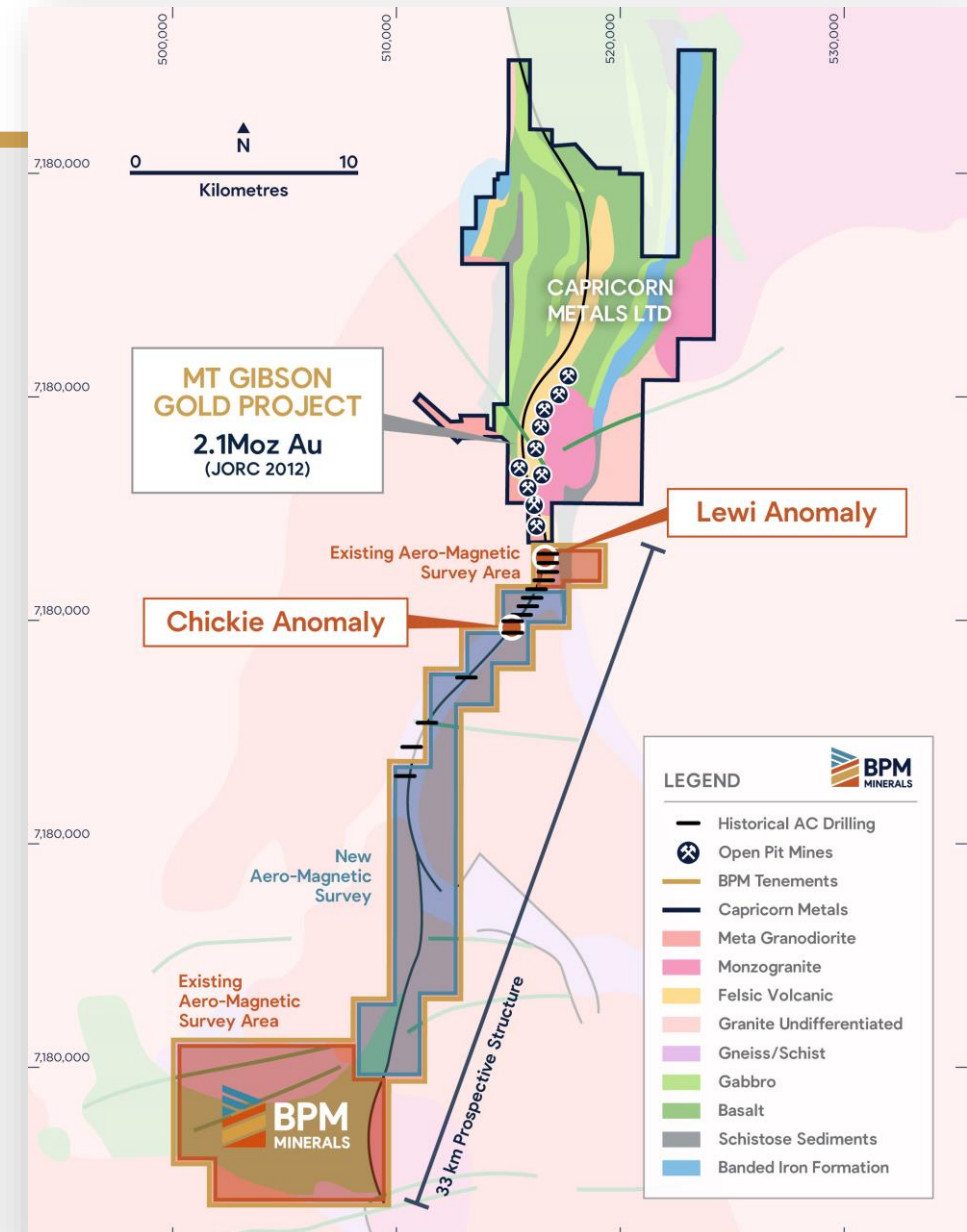
² ASX Announcement - 200 Metre-Long Nickel Anomaly Identified from Nepean AC [7 May 2021]

CLAW PROJECT

Abutting Australia's newest 2Moz Gold Project

TENURE AND GEOLOGICAL SETTING

- 134km² project area
- 33km of prospective strike
- 80% of tenement area regolith covered with limited previous exploration
- Review of historical open file drill data identified two drill-ready gold anomalies - Chickie and Lewi
- Capricorn Metals (ASX: CMM) recently acquired Mt Gibson and updated the Inferred Mineral Resource Estimate now 79.7Mt @ 0.8g/t Au for 2.1 Moz Au¹
- Proposed Mt Gibson pit wall <1km from northern boundary
- Southern extension of the Mt Gibson shear zone interpreted via magnetics to continue into license area



¹ CMM ASX Announcement - Capricorn acquires 2.1 million ounce mt gibson gold project [28 July 2021]

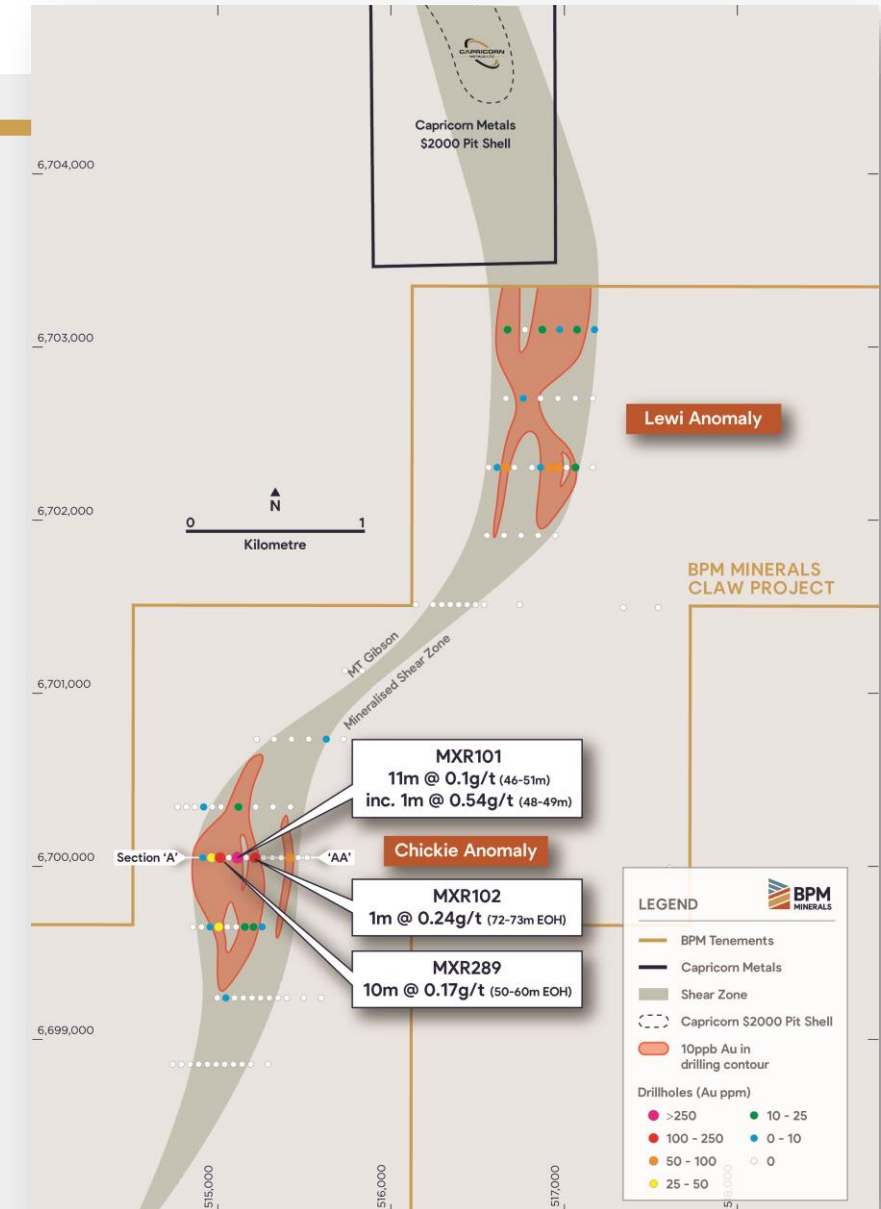
CLAW PROJECT

Chickie and Lewi drill-ready gold anomalies identified

- **Chickie** - 1,000m x 500m ready-to-drill gold-in-regolith anomaly with gold identified in the underlying fresh rock
- **Lewi** - 1,200 x 400m gold-in-regolith anomaly located on the northern margin of the Project, open towards the Mount Gibson Gold Project
- Aeromagnetic survey completed December 2021

PLANNED EXPLORATION

- Geochemical surveys to commence upon tenement grant in Q1 2022



2022: Drilling, Drilling, Drilling...and more Drilling

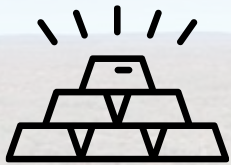
2022

	Q1	Q2	Q3	Q4
Hawkins (Pb-Zn-Ag)	Tenement Grant, Heritage survey, Aircore drilling (7,500m)			Assays
	Heritage survey		RC Drilling (5,00m)	
	Target Generation (Mapping, Sampling)			
Santy (Au)	Heritage survey	Phase-2 Aircore drilling (5,000m)	Assays	RC Drilling
Nepean (Ni-PGE's)	MLEM Results + infill MLEM	Target Generation and analysis	RC Drilling (2,500m)	
Claw (Au)	Tenement Access Agreement and soil sampling			Aircore drilling (5,000m)



WHY INVEST

OUR BELT AND BASIN EXPOSURE WITH DRILLING IMMINENT ACROSS THREE EXCITING PROJECTS



FOUR LIVE AND DISCOVERY-READY PROJECTS

Exposure to Pb-Zn-Au-Ni-Cu in one of the world's great mineralised jurisdictions



BASINS, GREENSTONE BELTS AND NOTABLE NEIGHBOURS

Projects located within the Earaheedy Basin, Murchison and Eastern Goldfields greenstone belts, close to historic and producing mines



EXPLORATION FOCUS

Phase-1 exploration programs completed at Nepean, Santy and Hawkins with new programs to drive newsflow



FUNDED TO DRILL

Board and Management comprised of exploration professionals, with experience discovering and funding resource projects globally



2ND YEAR IMPACT

Exploration programs underway across the Earaheedy, Murchison and Eastern Goldfields



BPM
MINERALS

Contact Information

Chris Swallow

Chief Executive Officer

E cs@bpmminerals.com

P +61 412 174 882

bpmminerals.com

