



Investor Presentation

Revolutionising the
Future of Agriculture

ASX: RGI

rotogro.com





Disclaimer

This presentation is for information purposes only. Neither this presentation nor the information contained within constitutes an offer, invitation, solicitation or recommendation in relation to the purchase or sale of shares in any jurisdiction. This presentation may not be distributed in any jurisdiction except in accordance with the legal requirements applicable in such jurisdiction. Recipients should inform themselves of the restrictions that apply in their own jurisdiction. A failure to do so may result in a violation of securities laws in such jurisdiction. This presentation does not constitute financial product advice and has been prepared without taking into account the recipient's investment objectives, financial circumstances or particular needs and the opinions and recommendations in this presentation are not intended to represent recommendations of particular investments to particular persons. Recipients should seek professional advice when deciding if an investment is appropriate. All securities transactions involve risks, which include (among others) the risk of adverse or unanticipated market, financial or political developments. An investment in RotoGro[®] shares is subject to known and unknown risks, some of which are beyond the control of the Company RotoGro[®] does not guarantee any particular rate of return or the future performance of RotoGro[®]. Investors should have regard to the risk factors outlined in this Presentation when making their investment decision. This Presentation contains certain 'forward looking statements', including but not limited to projections, guidance on future revenues, earnings, margin improvement, other potential synergies and estimates and the future performance of RotoGro[®]. Forward looking statements can generally be identified by the use of forward looking words such as, 'expect', 'anticipate', 'likely', 'intend', 'should', 'could', 'may', 'predict', 'plan', 'propose', 'will', 'believe', 'forecast', 'estimate', 'target', 'outlook', 'guidance', and other similar expressions within the meaning of securities laws of applicable jurisdictions and include, but are not limited to the outcome and effects of an offer and the use of proceeds. The forward looking statements contained in this Presentation are not guarantees or predictions of future performance and involve known and unknown risks and uncertainties and other factors, many of which are beyond the control of RotoGro[®], and may involve significant elements of subjective judgment and assumptions as to future events which may or may not be correct. There can be no assurance that actual outcomes will not differ materially from these forward looking statements. A number of important factors could cause actual results or performance to differ materially from the forward looking statements, including the risk factors set out in this Presentation. Investors should consider the forward looking statements contained in this Presentation in light of those disclosures. The forward looking statements are based on information available to RotoGro as at the date of this Presentation. All dollar values are in Australian dollars or AUD) unless otherwise stated.



Roto-Gro International Limited

An Agricultural Technology Company

RotoGro's versatile crop cultivation technology allows it to operate in two business segments: perishable foods (produce) and lawful cannabis. RotoGro offers each segment a specialized technology to significantly increase yields per square metre, while significantly decreasing operational expenditure. RotoGro is determined to deploy its technology to revolutionise the fresh produce and cannabis cultivation industries.

Produce

RotoGro partners with produce farmers, suppliers, and retailers to create sustainable, state-of-the-art indoor vertical farming facilities. RotoGro's specifically designed cultivation technology optimizes the production of leafy greens and a variety of other fruits and vegetables to integrate into a global green supply chain.

Cannabis

RotoGro partners with lawful cannabis and hemp cultivation operators to provide technological solutions for the cultivation of high-quality cannabis or hemp strains in retrofit or build-to-suit indoor vertical farming facilities. RotoGro works with its partners to complete full-facility designs utilizing its technology, maximizing operational efficiencies.

An aerial photograph showing a city's edge. On the left, there is a large, flat, brownish agricultural field. To the right, a dense residential area with many houses and buildings is visible. A road and a railway line run diagonally across the scene, separating the field from the city.

Rapidly urbanising regions face the challenge of providing food for their growing populations, at a time when urbanisation itself is consuming cropland.

This challenge forces urban centres to source food from suppliers that compromise the long term sustainability of food security.

"Because of their design and population density, cities cannot provide meaningful amounts of food for their own inhabitants..."

– UNCCD Global Land Outlook, Chapter 11, Pg 232

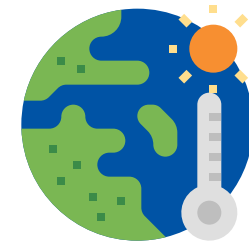


The Problem

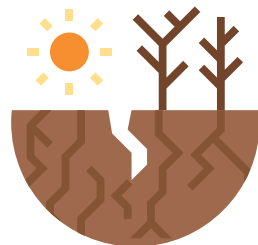
Agricultural Challenges in Urban Areas



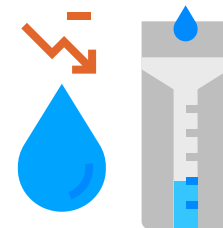
Supply Chain Disruptions



Inconsistent Weather Patterns
Negatively Impacting
Agricultural Production



Decreasing Availability
of Fertile Farmland



Decreasing Availability of
Reliable and Clean Freshwater



Negative Impacts of
Pesticides & Herbicides



Exponential Population Growth



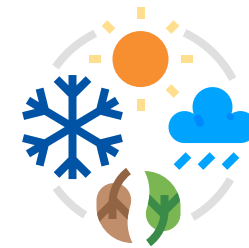
The Solution

Indoor Vertical Farming



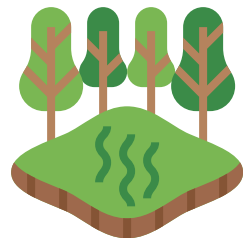
Reduced Supply Chain Dependency

By situating indoor vertical farms strategically in close proximity to the consuming population.



Ability to Produce Crops Year-Round

Irrespective of climate, season, and geography.



Reduced Need for Fertile Farmland

Indoor vertical farming facilities can be located almost anywhere.



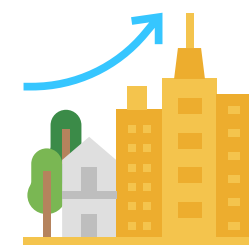
Decreased Freshwater Consumption

Uses up to 98% less water than conventional farming methods.



Eliminates the use of Pesticides and Herbicides

Promotes healthy crop growth.



Scalable

To meet the increasing population demand.



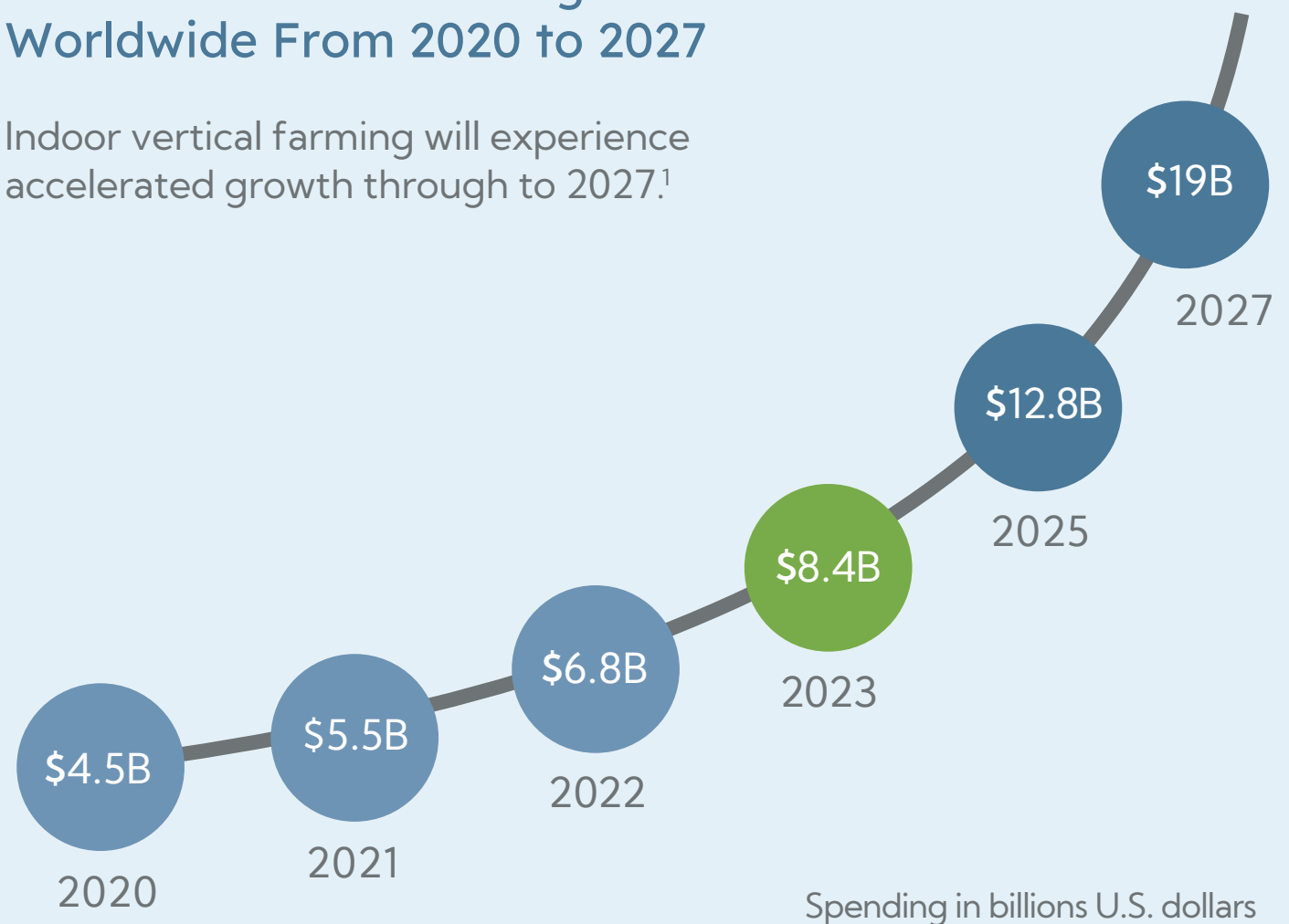
Market Validation & Growth Produce

The indoor vertical farming for produce sector is thriving due to the well-recognized problems with conventional farming techniques. As a result, the indoor vertical farming market will experience significant growth over the next several years.

Innovation in vertical farming technology provides for year-round sustainability, operational efficiencies and competitive cost of production when compared to conventional farming.

Shift to Vertical Farming Worldwide From 2020 to 2027

Indoor vertical farming will experience accelerated growth through to 2027.¹



1. "Industry Analysis, Vertical Farming Market" Global Market Insights (May 2021)



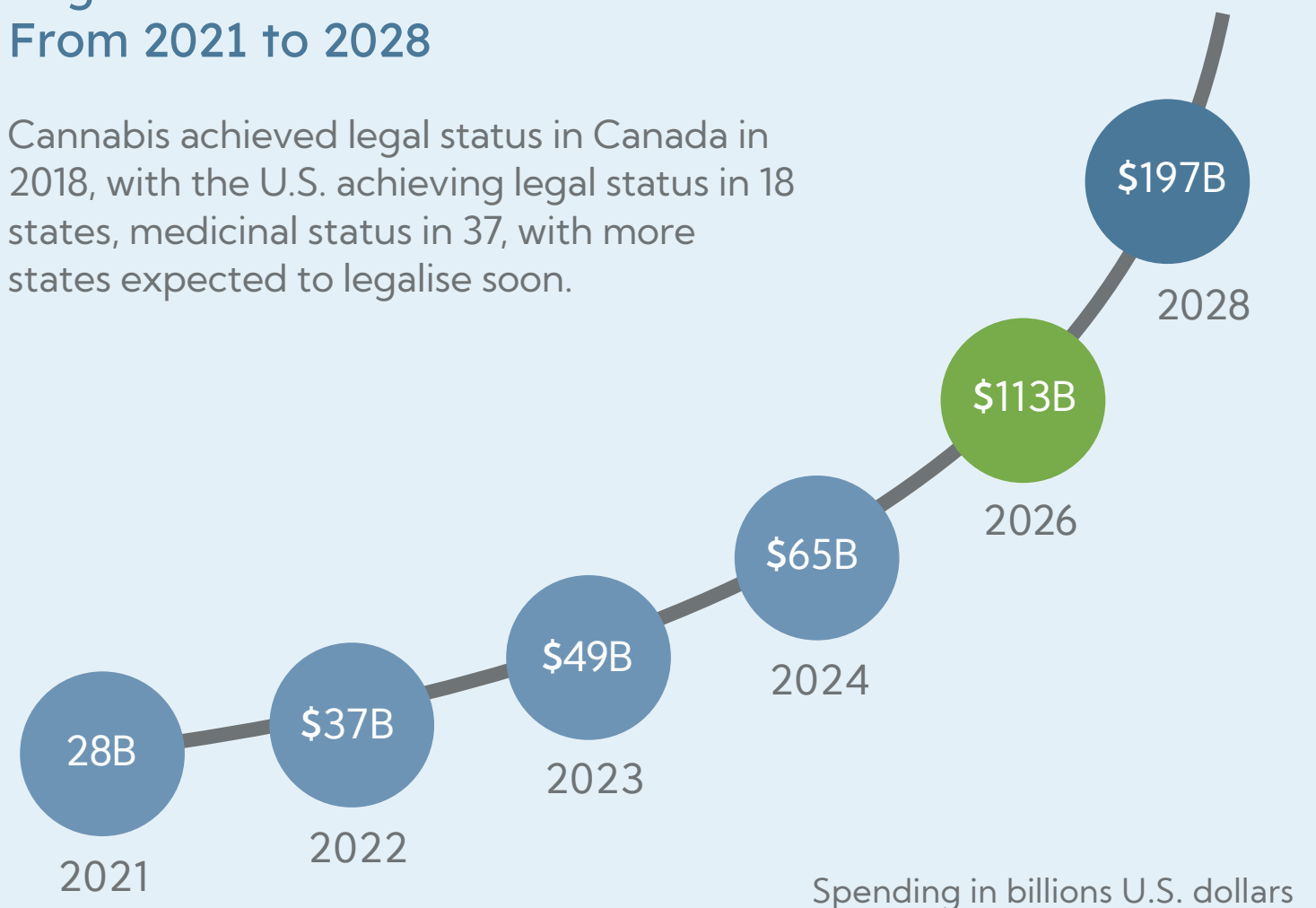
Market Validation & Growth Cannabis

The overlap between urbanization, urban farming, and the legalisation of medicinal and recreational cannabis created a burgeoning cannabis segment, which also benefits from the values of sustainable production and ease of access enabled by urban agriculture.

The global lawful cannabis market is expected to reach \$197 billion by 2028.¹

Legal Cannabis Market Size From 2021 to 2028

Cannabis achieved legal status in Canada in 2018, with the U.S. achieving legal status in 18 states, medicinal status in 37, with more states expected to legalise soon.



1. "Cannabis/Marijuana Market Size" Future Business Insights (November 2021)



The Opportunity

RotoGro to Revolutionise the Future of Agriculture

RotoGro's patented and proprietary agricultural technology optimizes urban indoor vertical farming for produce and cannabis, strategically positioning the Company to revolutionise the booming indoor vertical farming industry and the future of agriculture.

Large Addressable Market

The indoor vertical farming market is expected to grow from USD \$4.5 billion in 2020 to 19.4B in 2027 at a CAGR of 23.2%.¹

The global cannabis market is expected to grow from USD \$28 billion in 2021 to USD \$197 billion in 2028 at a CAGR of 32.04%.²

Joint Venture Partnership

As a technology partner, RotoGro looks to solidify joint ventures in the indoor vertical farming produce and cannabis industries to provide turn-key solutions, assisting its customers to reach their full potential.

Agricultural Technology

New technologies are constantly changing the global agriculture supply chain. RotoGro remains committed to positioning itself as the leading technology provider in the indoor vertical farming industry.

1. "Industry Analysis, Vertical Farming Market" Global Market Insights (May 2021)
2. "Cannabis/Marijuana Market Size" Future Business Insights (November 2021)

Existing Indoor Vertical Farming Technology

First Generation

Existing indoor vertical farming technologies face several challenges:

1. **Significant Electricity Consumption:** Lighting and HVAC requirements demand significant and unsustainable electricity use. Layers of lighting, vertically or horizontally, for flat deck stacked tables or walls is an inefficient lighting design that significantly and unnecessarily increases overall power consumption.
2. **Sub-Optimal Yield:** Current technologies do not optimise space savings, or do so at the expense of sustainable operational expenditures.
3. **Significant Labour Demand:** existing technologies still requires significant labour throughout the crop cultivation process, increasing the potential introduction of pests and pathogens, along with labour costs.
4. **Decreased Airflow:** Layers of flat deck tables impede canopy airflow, inhibiting the ability to cultivate mature crops.



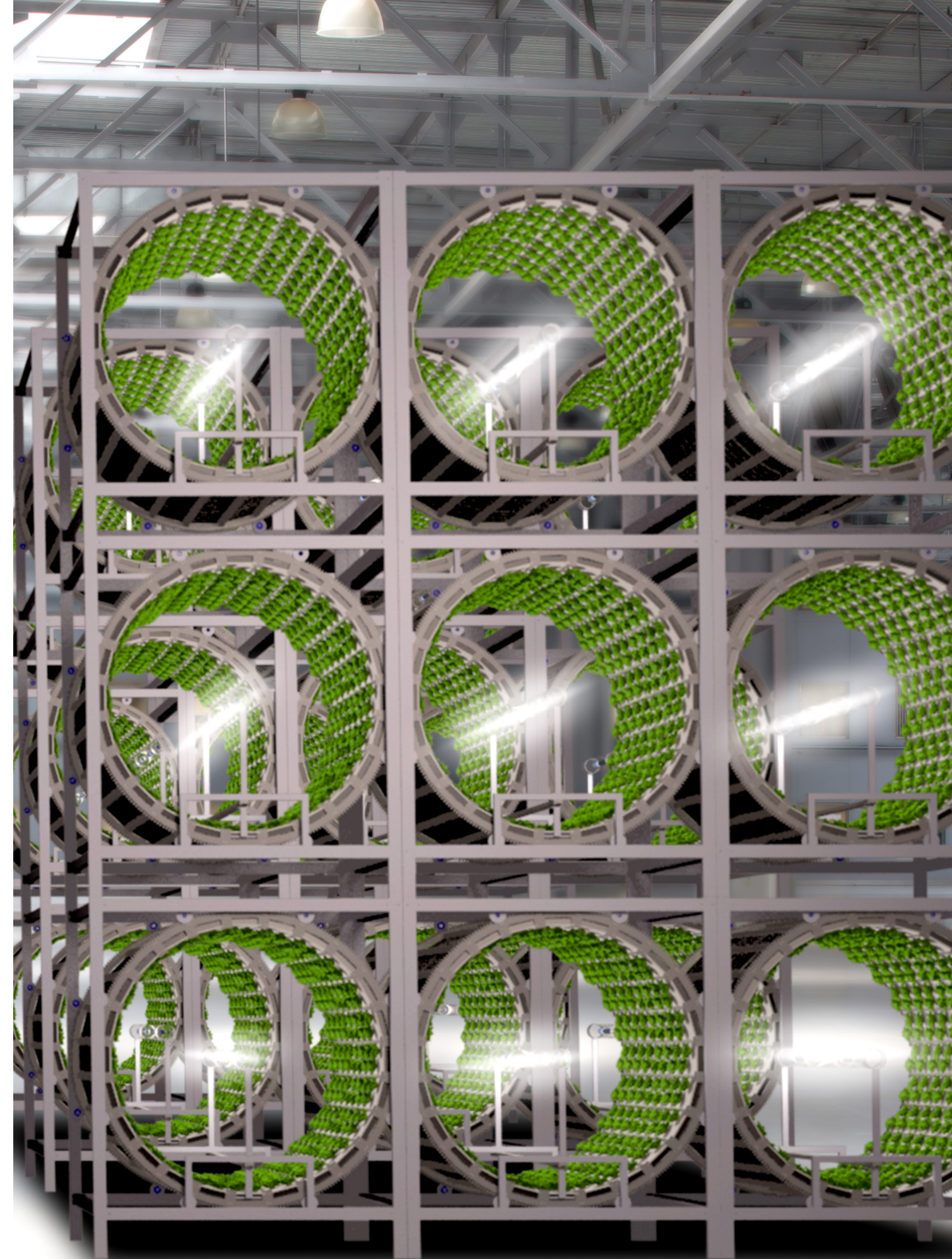
RotoGro's Indoor Vertical Farming Technology

Second Generation

RotoGro's technology reduces operational expenditure while increasing yield per square metre, providing a sustainable solution for the indoor vertical farming industry.

- 1. Decreased Electricity Consumption:** RotoGro projects in excess of 30% electricity savings when compared to other indoor vertical farming technologies.
- 2. Optimised Yield Advantages:** RotoGro's technology increases yield per square metre by 3.4% to 15.8% when compared to other indoor vertical farming technologies.¹
- 3. Decreased Labour Requirements:** RotoGro's in-house designed supporting technology automates the entire cultivation process throughout the crop cultivation cycle.
- 4. Increased Airflow:** Optimised distance between the grow surface area and proprietary, centrally placed LED lighting system, provides increased airflow and the ability to cultivate a variety of fruits and vegetables to maturity.

1. "The Economics of Local Vertical and Greenhouse Farming are Getting Competitive" AgFunder News

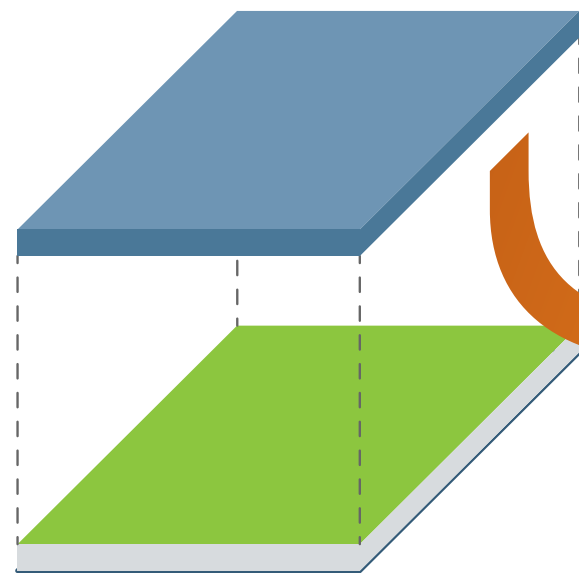




RotoGro Compared to Traditional Systems

The RotoGro garden system takes advantage of a number of proprietary advancements to increase yield while consuming fewer resources. RotoGro's innovative Rotational Garden Systems wraps a traditional flatbed garden around a centrally placed light, maximising grow surface area per square metre of floorspace.

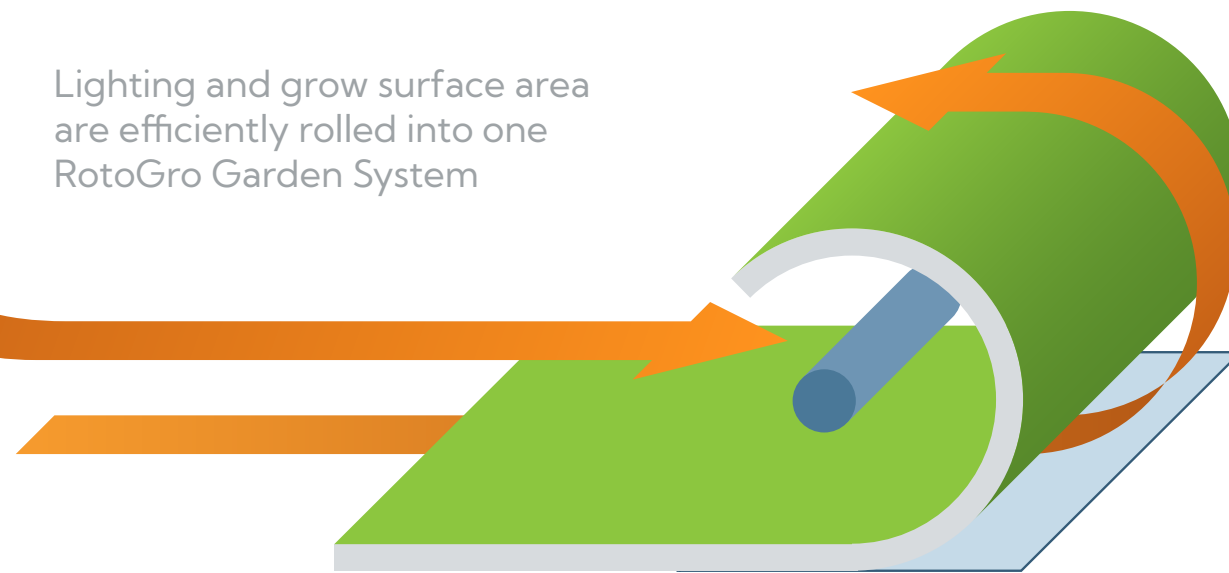
Traditional Flatbed System



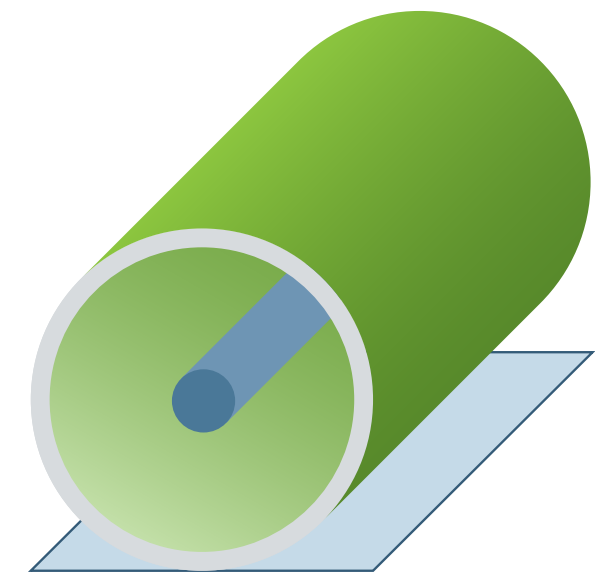
Traditional flatbed garden with lighting system.

Up to 3x Flatbed System Growing Surface Area per RotoGro Garden System

Lighting and grow surface area are efficiently rolled into one RotoGro Garden System



Up to three times the grow surface area while requiring significantly less lighting, optimizing electricity requirements.



These yield advantages are contained in the same floorspace footprint.

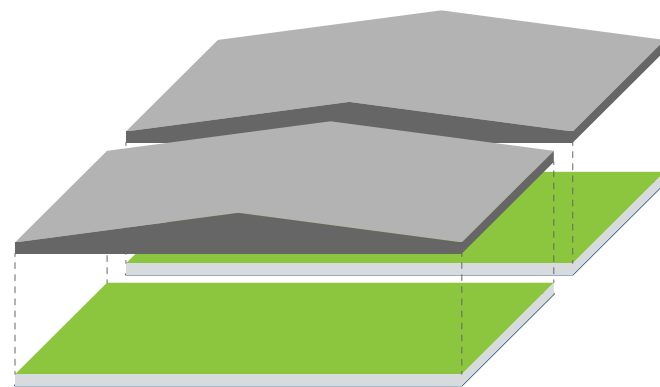
■ Grow Surface Area ■ Lighting Systems ■ Machine Footprint



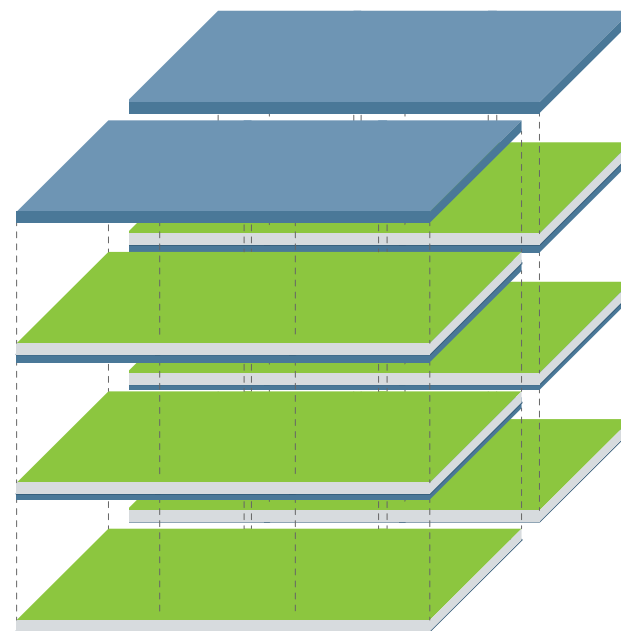
Annual Yield Comparison

RotoGro Garden Systems are also stackable, providing up to 3.8 to 15.3 times the yield per square metre compared to the yields of industry leading indoor vertical farming companies, with even greater differences when compared to greenhouse or conventional farming techniques.¹

Traditional Greenhouse

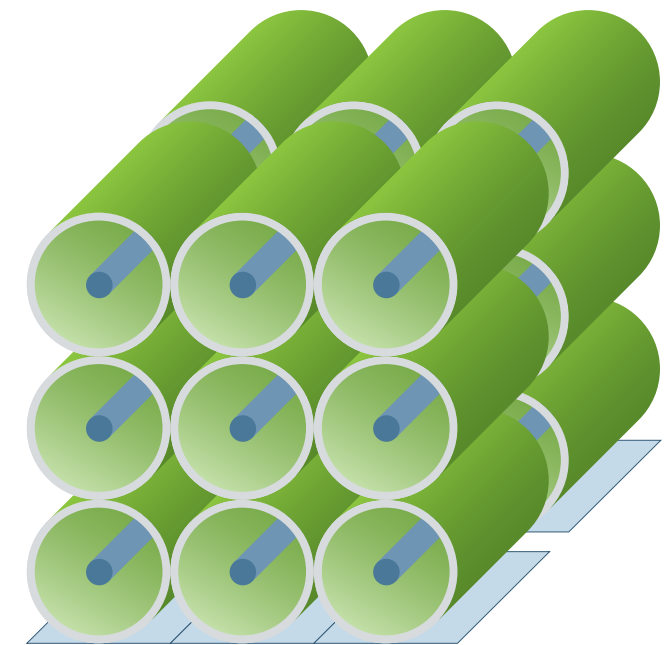


Existing Vertical Farming Systems



Grow Surface Area:
Multiple of floorspace when stacked.

RotoGro Garden Systems



Grow Surface Area:
 $(2\pi r h) \times \text{number of units}$.

1. "RotoGro Systems Cultivate Significant Yields in New Crop Trials" (cdn-api.markitdigital.com/apiman-gateway/ASX/asx-research/1.0/file/2924-02383833-6A1036443?access_token=83ff96335c2d45a094df02a206a39ff4)



RotoGro Garden Systems



Model 710: Produce

The Model 710 is RotoGro's larger Rotational Garden System designed specifically for the cultivation of high-quality produce crops, producing more product per square meter while reducing electrical consumption, when compared to other indoor vertical farming methods. Crop cultivation within the Model 710s are completely automated using RotoGro's proprietary software system and other supporting technology.



Model 420: Cannabis

Designed Specifically for the cultivation of high-quality cannabis crops, the Model 420 produces significantly more product per meter squared, while reducing electrical consumption, when compared to traditional flat table multi-layered flat table growing methods. This advanced crop cultivation system also seamlessly integrates with RotoGro's software system, automating the cultivation process.



RotoGro Advantages Resource Savings

Increased Yields

The intrinsic design of the Rotational Garden Systems allow for maximized floorspace footprint to grow surface area ratio. The Garden Systems are also stackable, further increasing yields per square meter.

Reduced Lighting

Each Garden System revolves around a centrally placed, proprietary LED lighting system, optimizing the concentration of light to the growing surface area, resulting in substantial electrical savings.

98% Water Savings

RotoGro's proprietary fertigation system automates the delivery of water/nutrient concentrations to each Garden System, ensuring product consistency, while also providing up to 98% water savings when compared to conventional farming methods.

Decreased HVAC

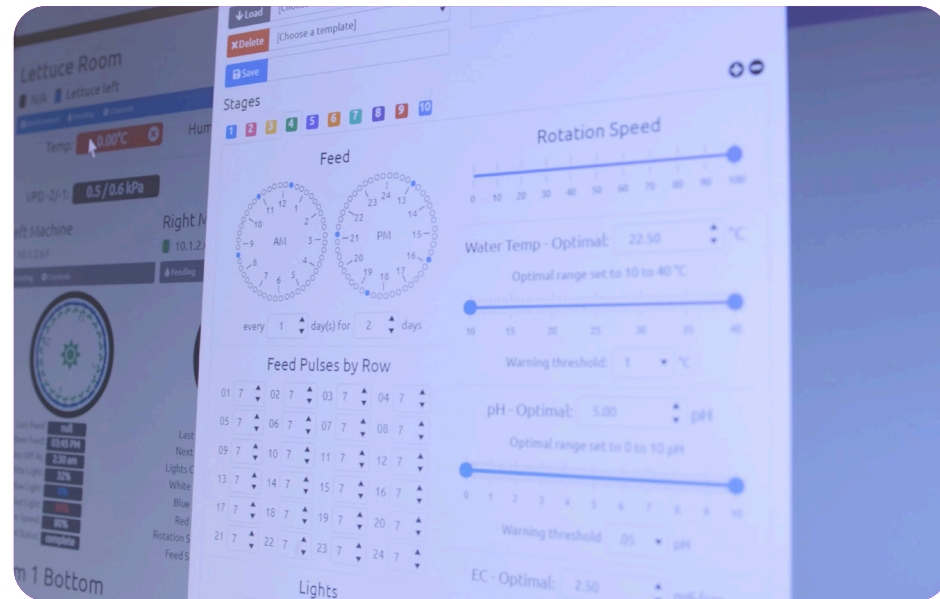
RotoGro's centrally placed lighting system incorporates a ducted cooling system that draws external air through the centrally placed lighting system and disperses the heated air outside of the cultivation environment, substantially reducing the overall air conditioning, humidification, and dehumidification costs, while increasing environmental controls.

Gravitropism/Heliotropism

The constant rotation of the crops cancels their gravitropic responses, providing unique stressors and opportunities within the cultivation environment inside each RotoGro Garden System. The result is the production of heartier crops than when compared to other indoor vertical farming techniques, producing crops with similar structural integrity to field grown crops, without all of the other negative attributes.



RotoGro Supporting Automation Technology



iGrow® Software

An in-house designed software platform provides dynamic, real time analysis of each Garden System, automating all aspects of the cultivation cycle, including revolution speed, light parameters (schedules, intensity, spectrum), nutrient delivery and management through RotoGro's Fertigation System, and automation of the AGVs for crop loading and unloading, providing preprogramable control and complete oversight.

Fertigation & Nutrient Mix System

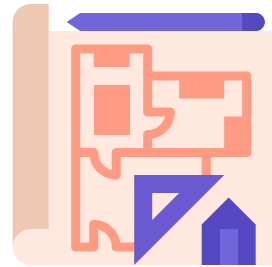
RotoGro's proprietary Fertilization System integrates seamlessly into its iGrow Software system, automating the delivery of crop feeding solutions to each RotoGro Garden System, facility-wide. The Fertigation System can be pre-programmed, loading variable crop-specific recipes and delivery times, throughout each cultivation cycle.

Automated Guided Vehicles (AGVs)

In-house designed AGVs autonomously shuttle growing trays from the propagation area and load them into the Model 710 garden systems, and conversely, unload the growing trays from the Model 710 garden systems and shuttle them to the harvesting area, significantly reducing human intervention and labour costs.



RotoGro Services



Turnkey Facility Design & Setup

Turnkey solutions from concept to full-facility design, to installation, commissioning, and operational readiness. RotoGro provides a turnkey, automated, and comprehensive solution to the indoor vertical farming space.



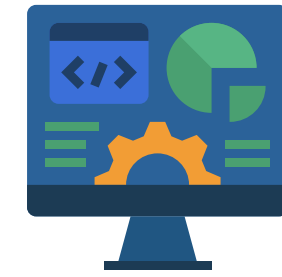
Nutrient Planning & Management

RotoGro offers custom nutrient formulas and blends to its customers, while working alongside its customers to develop and innovate new, proprietary formulas to maximise healthy crop growth.



Support & Maintenance

RotoGro offers a variety of customisable support and maintenance packages to its customers post-operational readiness to ensure sustained and optimised operational success.



Grow Management Services

RotoGro offers its customers varying level of grow management services, from remote monitoring and troubleshooting, to on-site cultivation management.



2021 Catalysts

CAD \$380,000 Purchase and Sale Agreement with Wolf Island Cannabis, located in Canada.

CAD \$1,000,000 Purchase Order, part of a CAD 1,900,000 Purchase and Sale Agreement, provided from Canniberia LDA, located in Portugal.

Memorandum of Understanding executed with Fresh Leaf Limited, a leading fresh herbs supplier in Australia. RotoGro shipped three Model 710's to Fresh Leaf for trials and testing, expected to begin in CYQ1 2022.

Designing state-of-the-art technology showcase facility to demonstrate RotoGro's technology on a pre-commercial scale.

Pursual of Canadian Securities Exchange public listing.

Significant research growing trials completed with Verity Greens, RotoGro's partner in the Canadian produce space, for 3 of the largest fresh produce suppliers in Canada.

Ongoing discussions and crop research testing with high-value companies, anticipating transitioning these discussions into technology Purchase and Sale Agreements.

Negotiations with significant government actors in Asia for the potential roll-out of RotoGro's technology for produce cultivation throughout the region.

Discussions with prominent space exploration companies to assess synergies, anticipating to introduce a comprehensive food system to be used during long-duration space missions.

Partnered with Cultivatd Inc., a leading indoor vertical farming brokerage, globally.



2022 Targets

- Dual List on Canadian Securities Exchange
- Secure Canadian Produce Facility Technology Agreement
- Secure Canadian Cannabis Facility Technology Agreement
- Outfit and Install Technology in Canniberia Facility (phase 1)
- Outfit and Install Technology in Wolf Island Cannabis Facility
- Secure First Technology Agreement in Asia
- Advance Fresh Leaf Produce Cultivation Trials and Testing
- Operationalise Canniberia Cannabis Facility
- Advance Discussions for Technology Agreement in Europe (produce)
- Advance Discussions for Technology Agreement in USA (cannabis)

- Secure Deposit for Canniberia Facility (phase 2)
- Secure Technology Agreement with Fresh Leaf for Pre-Commercial Pilot Facility
- Secure Technology Agreement for First Facility in Oceania (medicinal cannabis)
- Outfit and Install Technology in Canniberia Facility (phase 2)
- Advance Discussions for Technology Agreement in USA (produce)
- Pursue Existing CPT Patent Applications in Strategic Jurisdictions
- Continue to Develop and Innovate Cutting-Edge Crop Cultivation Technology
- Continue Other Business Development Initiatives, Globally

Stemming from CY2022 Catalysts only. Although these leads are highly prospective, it is not guaranteed that they will convert into sales orders and growing management contracts.



Board



Michael Carli

Non-Executive Chairman

More than 30 years of experience specialising in corporate, commercial, and intellectual property law in Ontario, Canada. Currently a managing partner of the law firm Rigobon Carli and a former managing director of RotoGro.



Michael Di Tommaso

Chief Executive Officer, Executive Director

Experienced operational executive across industry sectors, specialising in the indoor farming technology market. Hands on experience in the evolution of cannabis legalisation globally, with experience in contract law and regulatory compliance.



Leighton Richards

Non-Executive Director

Over 20 years of experience in business across consumer goods, agriculture, and health and wellness sectors in Australia, New Zealand, South East Asia, China, and India. Currently the CEO of WelleCo and a Director of Sunny Ridge Berry Farms.

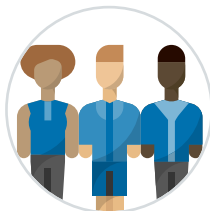


Terry Gardiner

Non-Executive Director

Over 20 years of extensive experience in capital markets, stockbroking, and derivatives trading. Currently a Director of Barclay Wells Limited and a Non-Executive Director of Cazaly Resources Limited (ASX:CAZ) and Galan Lithium Limited (ASX:GLN).

Key Personnel



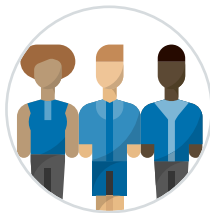
Jim Gallant

Head of Innovation



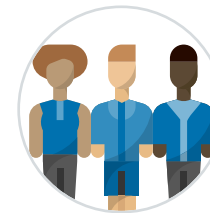
John Tadic

Senior Project Manager



Drazen Vicic

Senior Plant Scientist



Norm Petroff

Software Engineer



Patents

Title	Jurisdiction	Application No.	Filing Date	Status
Rotary Plant Growing Apparatus	United States	10/375,681	February 28, 2003	Patent Granted by the United States Patent and Trademark Office on January 11, 2005. Patent Number: US 6,840,007 B2
Stackable Modular Rotatable Gardening System	United States	14/883,156	October 14, 2015	Patent Granted by the United States Patent and Trademark Office on May 21, 2019; Patent Number: US 10,292,346 B2
Stackable Modular Rotatable Gardening System	Canada	2,908,184	October 13, 2015	Patent Granted by the Canadian Intellectual Property Office on October 22, 2019; Patent Number: CA 2 908 184 C
Stackable Modular Rotatable Gardening System	Europe	15189807.9	October 14, 2015	Patent Granted by the Canadian Intellectual Property Office on April 22, 2020; Patent Number: EP 3 155 896 A1
Stackable Modular Rotatable Gardening System	Australia	2015243013	October 14, 2015	Patent Granted by the Australia Patent Office on March 18, 2021; Patent Number: 2015243012
Plant Tray, Feed Nozzle and Plant Tray Feed System	Patent Co Op Treaty WIPO	63/088,597	October 7, 2020	Patent Pending
Automated Plant Tray Shuttle and System	Patent Co Op Treaty WIPO	63/088,607	October 7, 2020	Patent Pending
Rotating Garden Rails for Holding Plant Trays	Patent Co Op Treaty WIPO	63/088,623	October 7, 2020	Patent Pending



Corporate Snapshot

Roto-Gro International Limited is an agricultural technology company. The Company's objective is to generate socially responsible, sustainable and profitable revenue by becoming a technology partner to operators in the indoor vertical farming industry.

RotoGro strives to revolutionise the future of agriculture by providing crop cultivation solutions to ensure sustainable, global fresh food security, and will achieve this through the supply of its patented and proprietary indoor vertical farming technology.

The core of RotoGro's technology is its patented Rotational Garden Systems, which provide optimised yield per square metre and lower operating costs when compared to other indoor vertical farming technologies. RotoGro's Rotational Garden Systems are supported by its proprietary Enterprise Edition iGrow software, nutrient management system, automation technologies, and in-house design and engineering services. RotoGro's technology and services provide turnkey solutions to design and build facilities advanced vertical farming facilities, globally.

Financial Snapshot		
Share Price	\$	0.025
52 Week High	\$	0.1075
52 Week Low	\$	0.024
Shares on Issue		342,592,797
Market Capitalisation	\$	8.56 M
Total Debt Outstanding	\$	Nil
Cash	\$	2,112,717
Enterprise Value	\$	6.25 M
As of November 19, 2021		





ROTOGRO[®]
INTERNATIONAL LIMITED

Roto-Gro International Limited
ASX:RGI

Australia

Level 5, 126 Philip Street
Sydney NSW Australia 2000
+61 2 8072 1400

Canada

140 Healey Road
Bolton, Ontario Canada, L7E5B2
+ 1 905 880 2226

For further information, please contact:
info@rotogro.com

www.rotogro.com

This Investor Presentation has been authorised for release
by the Board of Directors of Roto-Gro International Limited.