

FURTHER STRONGLY ENCOURAGING DRILL RESULTS AT THOR ISR URANIUM PROJECT

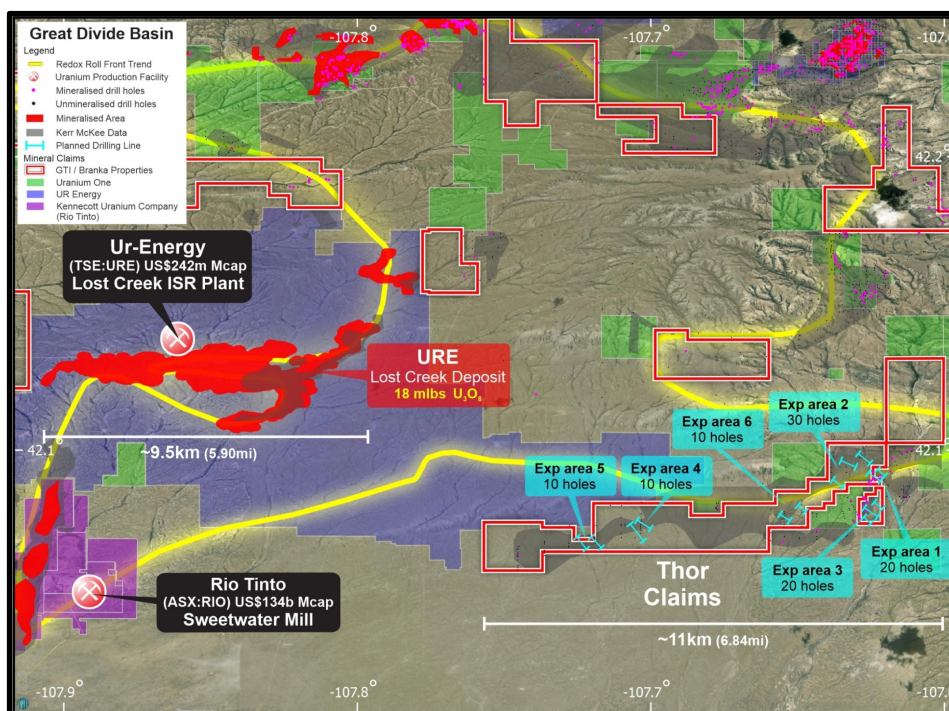
Highlights:

- 15 new holes completed last week bringing the total of holes now completed to 39 of the planned ~100-hole maiden drill program
- 19 of 39 holes to date met or exceeded Grade Thickness (GT) cutoff with average of 0.60GT
- Results continue to exceed expectations with 49% of holes drilled recording better than the minimum targeted economic Grade Thickness (GT) cutoff of 0.2GT¹
- Mineralisation continues to demonstrate characteristics conducive to ISR recovery
- 1st phase of drilling concluded December 17th with balance of holes planned for early 2022

GTI Resources Ltd (GTI or Company) is pleased to advise that 2 mud rotary drill rigs completed 15 new holes last week. This brings the total holes drilled so far to 39 of a planned 50,000-foot (~15,000m) ~100-hole maiden drill program at the Thor ISR uranium project in Wyoming's Great Divide basin (Figure 1).

Executive Director Bruce Lane commented "results from the first batch of drill holes at Thor have exceeded our expectations. The mineralisation encountered so far shows strong potential for development with a well mineralised and consistent thickness of ISR amenable sands starting at around 100 feet below the water table. We're delighted with the performance of the geological team and the drill crew in Wyoming, and we look forward to more good results after the Christmas break. The outlook for 2022 is very positive for uranium and it promises to be an exciting year for GTI."

Figure 1. Thor Project Uranium Drilling Location Map, Great Divide Basin, Wyoming USA.



¹ Typical economically viable ISR grade & GT cut-offs are: 0.02% (200ppm) U₃O₈ & 0.2GT i.e., 10 ft (3m) @ 0.02% (200ppm) U₃O₈

Figure 2. Mud Rotary Drill Rigs, Ancillary Equipment and Support Vehicles at the Thor Project.



The first 39 drill holes at the Thor Project were completed for a total of 18,802 feet (5,731 metres) within Area 1 and Area 2 (**Figures 1 & 3**). Typical economically viable ISR grade and GT cut-offs are: 0.02% (200ppm) U_3O_8 and 0.2GT -- i.e., 10 ft (3m) @ 0.02% (200ppm) U_3O_8 . Results from the first 24 holes (including those previously reported) were characterised by (**Table 1**):

- 19 of 39 holes (49%) drilled to date met both grade and GT cutoff with an average of 0.60GT; and
- Of the remaining 20 holes, 3 met grade cutoff but not GT, 11 had trace mineralisation & 6 were barren.

These results are in line with or better than expectation and are viewed by the Company as indicative of high potential for economic ISR uranium mineralisation.

Drilling is now largely completed in the initial drilling areas to the northeast (Area 1 in **Figure 3**) and to the southeast (Area 2 in **Figure 3**). Drilling to date has shown a consistent sand unit at ~200 feet that is 110-120' thick within which there are three or more fronts.

These results continue to be very encouraging, and the mineralisation encountered meets and or exceeds expectations for economic ISR uranium recovery. Drilling to date has confirmed that the historic data is an excellent guide for drilling². Drilling has also continued to show that the geological and hydrogeological setting of the mineralisation appears to be conducive to ISR recovery with the main host sand appearing to be continuous in the area and the water table being over 100 feet above the main host sand.

Drilling continues to show that there are at least 3 separate roll fronts present in the main host sand with additional sands positioned above and below the main sand unit showing at least trace mineralisation.

GTI's exploration objective for this drill program is to identify REDOX boundaries and potential host sands in addition to defining the depth, thickness, grade and width of mineralisation across the REDOX front. The Company is targeting mineralisation 50 feet (15 metres) or more below the water table. The drill program may ultimately enable estimation of inferred mineral resources and/or an exploration target.

² It should be noted that the drilling commenced in one of the areas with better historic data and that the positive drilling success rate may not be replicated as the Company proceeds into other areas with less comprehensive historical data.

Table 1. Thor Drilling Preliminary Results Weeks 1 & 2

As of 17/17/2021		Thor Drilling Project Great Divide Basin Preliminary Results									
Reported at 0.02 %eU308 Cutoff (200 ppm)											
Hole ID	Date Drilled	Total Depth		From	To	Thickness	Grade		Zone	Total Hole	
		Drilled	Logged				%eU ₃₀₈	GT		GT	
BR-1001	11/30/2021	503	503	246.5	255.5	9	0.033	0.30	Upper	0.55	
				276.5	284	7.5	0.034	0.26	Middle		
BR-1002	11/29/2021	503	503	217	240.5	23.5	0.063	1.48	Upper	1.74	
				257.5	261	3.5	0.074	0.26	Middle		
BR - 1003	11/30/2021	503	502	223	233	10	0.037	0.37	Upper	0.37	
				295	310	15	Trace		Lower		
BR - 1004	12/1/2021	503	502	195	196	1	0.024	0.02	Upper	0.09	
				202	205	3	0.022	0.07	Upper		
				239.5	240	0.05	0.022	0.00	Middle		
				256	261.5	5.5	0.01		Middle		
				300	301		Trace		Lower		
BR-1005	12/1/2021	503	500	210.5	238	27.5	0.044	1.21	Upper	1.92	
				255.5	269.5	14	0.051	0.71	Middle		
				304.5	305.5	1	0.021	0.02	Lower		
BR-1006	12/2/2021	503	502	184.5	188	4.5	0.01			0.36	
				244	246	2	0.031	0.06	Middle		
				258.5	265	6.5	0.046	0.30	Middle		
				279.5	294	14.5	0.017	0.25	Lower		
BR-1007	12/2/2021	503	502	187.5	190.5	3	0.01			0.18	
				255.5	261	5.5	0.01		Middle		
				278	284.5	6.5	0.028	0.18	Middle		
				456	457		0.01				
BR-1008	12/2/2021	503	502	226	228	2	0.01		Upper	0.07	
				282	286	4	0.018	0.07	Middle		
BR-1009	12/3/2021	503	501	229.5	231.5	2	Trace				
				339.5	341	1.5	Trace				
BR-1010	12/6/2021	500	500					Barren			
									0.00		
BR-1011	12/6/2021	500	500	414	416	2	Trace				
				430	435	5	Trace				
BR-1012	12/7/2021	503	502	318	319	1	Trace				
				432	434	2	0.012	0.02			
BR-1013	12/3/2021	503	502					Barren			
									0.00		
BR-1014	12/6/2021	500	500					Barren			
									0.00		
BR-1015	12/7/2021	503	502	309.5	314.5	5	0.013	0.07			
				339.5	341	1.5	0.012	0.02			
				350.5	352	1.5	0.011	0.02			
BR-1016	12/9/2021	500	500					Barren			
									0.00		
BR-1017	12/9/2021	500	500					Barren			
									0.00		
BR-1018	12/9/2021	500	500					Barren			
									0.00		
BR-1019	12/9/2021	500	500	305	325	20	Trace				
									0.00		
BR-1020	12/7/2021	500	500	187	189	2	0.012	0.02			
				219.5	220.5	1	0.01	0.01			
				256.5	266	9.5	0.039	0.37	middle		
BR-1021	12/9/2021	503	502	139.5	144	4.5	0.025	0.11		0.48	
				148.5	161	12.5	0.029	0.36			
BR-1022	12/10/2021	502	502	133.5	150	16.5	0.018	0.30		0.50	
				159	170	11	0.018	0.20			
BR-1023	12/10/2021	500	500	145	150	5	0.021	0.11		0.32	
				166.5	172	5.5	0.02	0.11			
				177	183	6	0.018	0.11			
BR-1024	12/9/2021	500	500	353	362	9	0.023	0.21		0.21	
End Week 2											

Table 1. (cont.) Thor Drilling Preliminary Results Week 3

As of 17/17/2021		Thor Drilling Project Great Divide Basin Preliminary Results								
Reported at 0.02 %eU ₃ O ₈ Cutoff (200 ppm)										
Hole ID	Date Drilled	Total Depth		From	To	Thickness	Grade		Zone	Total Hole GT
		Drilled	Logged				%eU ₃ O ₈	GT		
BR-10026	12/14/2021	300	300	152.5	176	23.5	0.02	0.47		0.47
BR-1027	12/13/2021	502	502	140.5	147	6.5	0.028	0.18		0.49
				166	176	10	0.031	0.31		
BR-1028	12/13/2021	502	502	128	135	7	0.015	0.11		0.45
				163.5	171	7.5	0.04	0.30		
				179	182.5	3.5	0.025	0.09		
				190	192.5	2.5	0.024	0.06		
BR-1029	12/23/2021	500	500	138	147.5	9.5	0.035	0.33		0.33
BR-1030	12/14/2021	503	503	137	139.5	2.5	0.032	0.08		1.05
				146.5	156.5	10	0.082	0.82		
				160.5	166	5.5	0.027	0.15		
BBR-1031	12/14/2021	502	502	135	139.5	4.5	0.015	0.07		0.49
				158	170.5	12.5	0.035	0.44		
				172.5	174.5	2	0.028	0.06		
BR-1032	12/15/2021	450	450	126.5	129	2.5	0.015	0.04		0.41
				137	140.5	3.5	0.014	0.05		
				150.5	164.5	14	0.029	0.41		
BR-1033	12/15/2021	500	500	180.5	188	7.5	0.02	0.15		0.35
				245	249	4	0.049	0.20		
				254	259	5	0.014	0.07		
BR-1034	12/16/2021	350	350	184	196	12	0.022	0.26		0.53
				204	212.5	8.5	0.031	0.26		
BR-1035		350	350	207.5	210.5	3	0.015	0.05		
				233.5	211.5	2	trace			
				285.5	288.5	3	trace			
				303.5	305.5	2	trace			
BR-1036	12/16/2021	500	500	265.5	267.5	2	0.048	0.10		0.10
				284.5	288	3.5	trace			
BR-1037	12/17/2021	500	500	344.5	347.5	3	0.014	0.04		
				354.5	362.5	8	0.014	0.11		
BR-1038	12/17/2021	500	500	273.5	277	3.5	0.013	0.05		
				289	291.5	2.5	trace			
				343	346.5	3.5	0.014	0.05		
				453	456	3	trace			
BR-1039	12/17/2021	300	300	181	185	4	0.013	0.05		
				188.5	191.5	3	0.011	0.03		
End week 3				207	214.5	7.5	0.016	0.12		

GTI hopes to continue to encounter mineralisation of similar tenor to that found so far. Ultimately the Company is focused on defining mineralisation similar to that discovered at the nearby Lost Creek deposit and that otherwise meets typical economic cutoff criteria for sandstone hosted ISR uranium projects in Wyoming's Great Divide Basin e.g.:

- Grade greater than 0.02% (200 ppm) U₃O₈
- Grade x Thickness (GT) greater than 0.2 (10 ft @ 0.02 - 3 metres @ 200ppm U₃O₈)
- Width of mineralisation above cutoff nominal 50 feet (15 metres) and nominal GT of 0.4

UR Energy's Lost Creek ISR uranium deposit (**Figure 1**) is reported to contain a remaining 13Mlbs of U₃O₈ at average grade of 0.048% eU₃O₈ (Measured and Indicated) at a cutoff Grade Thickness (GT) of 0.2.³

The 1st phase of the drilling program was completed as expected on December 17th for the Christmas break with the balance of the program planned to take place during early 2022 as conditions permit.

Final results, conclusions and recommendations for next steps will be developed at end of drill program during 2022.

³ <https://www.ur-energy.com/news-media/press-releases/detail/169/ur-energy-issues-amended-preliminary-economic-assessment>

Figure 3. Thor Project Uranium Drilling Location Map, Great Divide Basin, Wyoming USA.

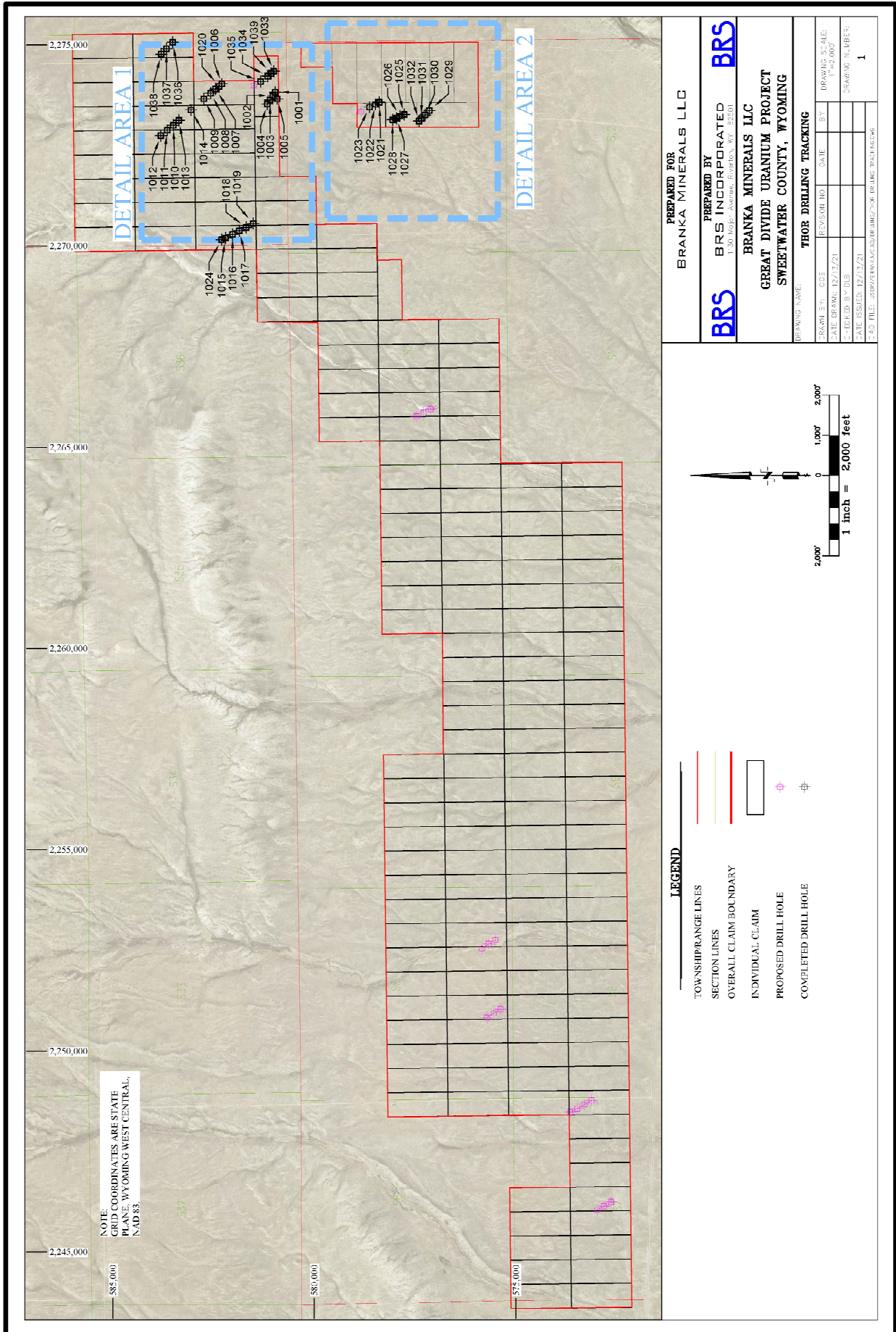


Figure 3a. Thor Project Detail Area 1 Uranium Drilling Location Map, GDB, Wyoming USA.

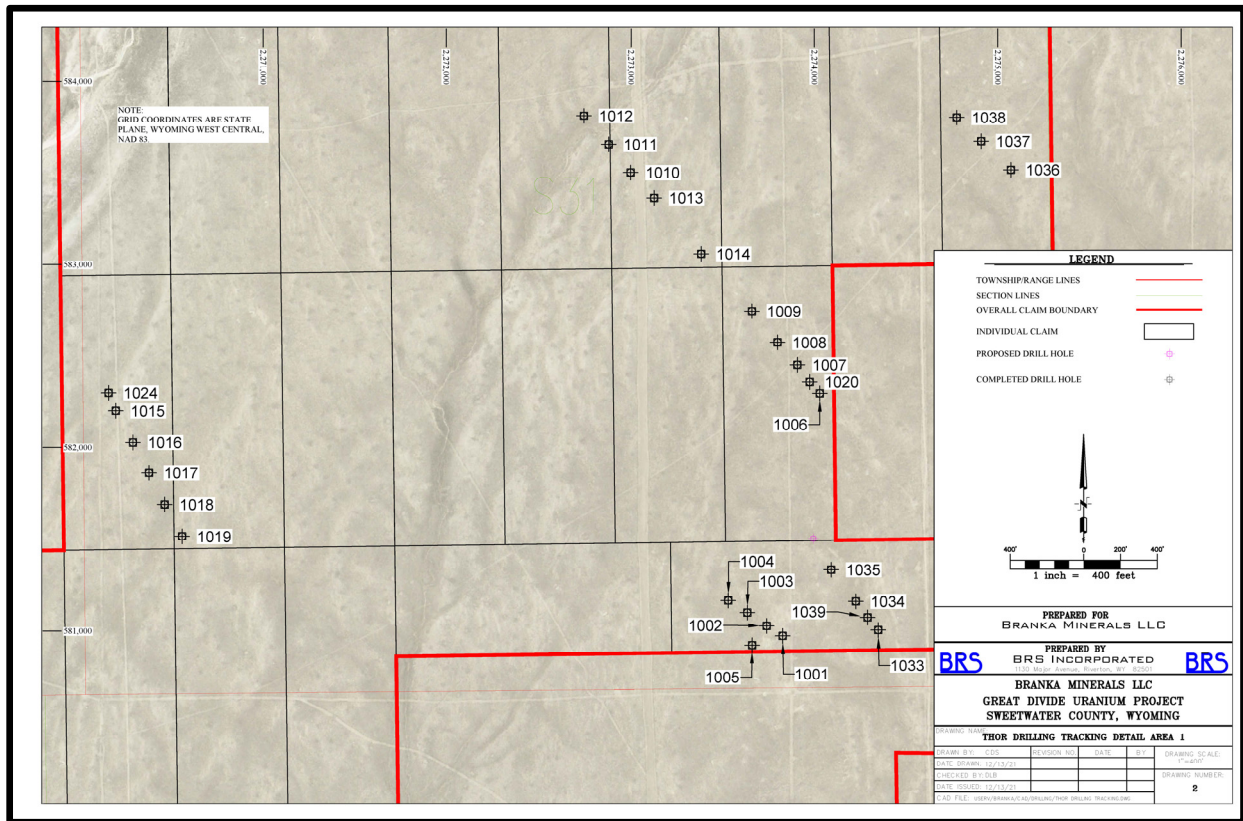
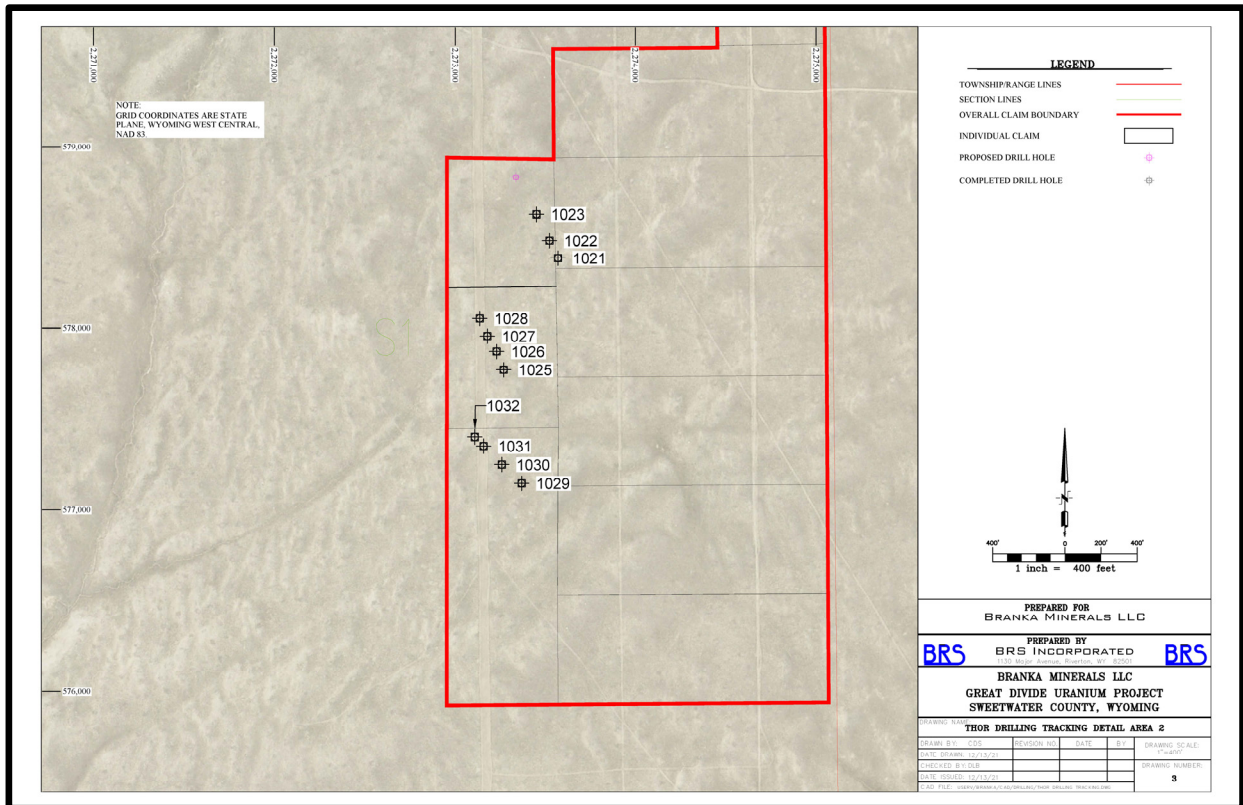


Figure 3b. Thor Project Detail Area 2 Uranium Drilling Location Map, GDB, Wyoming USA.



-Ends-

This ASX release was authorised for release by the Directors of GTI Resources Ltd. Bruce Lane, (Executive Director), **GTI Resources Ltd**

Level 1/89 St Georges Terrace, Perth, WA 6000. Phone: +61 (0) 8 9226 2011, email: info@gtiresources.com.au, web: www.gtiresources.com.au

Competent Persons Statement

The information in this announcement that relates to the Exploration Results is based on information compiled and fairly represents the exploration status of the project. Doug Beahm has reviewed the information and has approved the scientific and technical matters of this disclosure. Mr. Beahm is a Principal Engineer with BRS Engineering Inc. with over 45 years of experience in mineral exploration and project evaluation. Mr. Beahm is a Registered Member of the Society of Mining, Metallurgy and Exploration, and is a Professional Engineer (Wyoming, Utah, and Oregon) and a Professional Geologist (Wyoming). Mr. Beahm has worked in uranium exploration, mining, and mine land reclamation in the Western US since 1975 and has sufficient experience relevant to the style of mineralisation and type of deposit under consideration and has reviewed the activity which has been undertaken, to qualify as a Competent Person as defined in the 2012 Edition of the Joint Ore Reserves Committee (JORC) Australasian Code for Reporting of exploration results, Mineral Resources and Ore Reserves. Mr. Beahm provides his consent to the information provided.

Table 2. Drill Collar Information (Including Previously Reported)

State Plane, Wyoming West Central, Nad 83, US Survey Foot

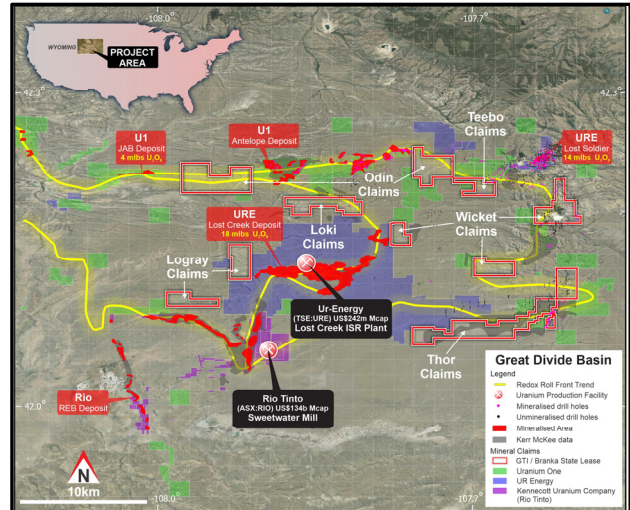
Hole ID	Coordinates (easting)	Coordinates (northing)	Elevation (ft)
BR-1001	2273826.0833'	580972.5827'	6873.86
BR-1002	2273738.9450'	581026.7707'	6888.63
BR-1003	2273633.0114'	581098.7137'	6884.09
BR-1004	2273530.0038'	581164.6581'	6886.52
BR-1005	2273659.9736'	580921.6884'	6883.69
BR-1006	2274027.8844'	582294.3278'	6897.49
BR-1007	2273906.1861'	582449.3461'	6891.21
BR-1008	2273797.7957'	582570.5253'	6903
BR-1009	2273658.3254'	582741.2450'	6906
BR-1010	2272998.8106'	583497.2280'	6904.88
BR-1011	2272879.0261'	583650.0684'	6900.63
BR-1012	2272744.7518'	583806.5753'	6903.61
BR-1013	2273126.3440'	583359.7640'	6910
BR-1014	2273382.7520'	583056.4605'	6900.39
BR-1015	2270197.4455'	582198.5245'	6877.43
BR-1016	2270290.9899'	582027.7129'	6886.93
BR-1017	2270378.6803'	581860.9265'	6883.4
BR-1018	2270463.4226'	581685.9081'	6883.4
BR-1019	2270558.4373'	581512.4272'	6884.2
BR-1020	2273972.9569'	582355.3699'	6894.72
BR-1021	2273570.4906'	578386.7846'	6858.92
BR-1022	2273522.8888'	578483.7944'	6857.62
BR-1023	2273451.6411'	578628.4196'	6859.22
BR-1024	2270158.4758'	582296.7198'	6877.43
BR-1025	2273269.9525'	577769.6757'	6851.34
BR-1026	2273230.2547'	577871.6131'	6846.99
BR-1027	2273178.7580'	577957.1408'	6849.65
BR-1028	2273137.2821'	578052.9051'	6851.34
BR-1029	2273368.7617'	577142.8786'	6851.38
BR-1030	2273259.1718'	577247.1200'	6850.26
BR-1031	2273158.6100'	577349.3046'	6854.84
BR-1032	2273109.4519'	577399.0036'	6854.36
BR-1033	2274345.8241'	581004.5936'	6877.67
BR-1034	2274223.7673'	581160.0672'	6869.74
BR-1035	2274090.1421'	581332.2097'	6874.94
BR-1036	2275067.3583'	583511.9035'	6896.05
BR-1037	2274905.8650'	583667.5184'	6902.62
BR-1038	2274772.8712'	583797.2373'	6898.32

Note: All holes were drilled vertically

GTI RESOURCES LTD – SUMMARY OF PROJECTS

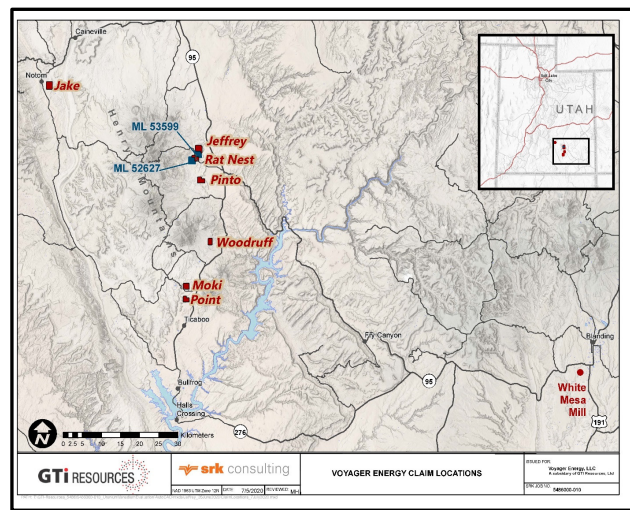
GREAT DIVIDE BASIN ISR URANIUM, WYOMING, USA

GTI resources has acquired 100% of ~22,000 acres (~8,900 hectares) across several groups of strategically located and underexplored mineral lode claims (**Claims**) and 2 state leases (**Leases**), prospective for sandstone hosted uranium. The properties are located in the Great Divide Basin (**GDB**), Wyoming, USA & the Uravan Belt, Colorado, USA (the **Properties**). The Wyoming Properties, being GTI’s priority for exploration, are located in proximity to UR Energy’s (**URE**) Lost Creek ISR Facility & Rio Tinto’s (**RIO**) Sweetwater/Kennecott Mill and the GDB roll front REDOX boundary.



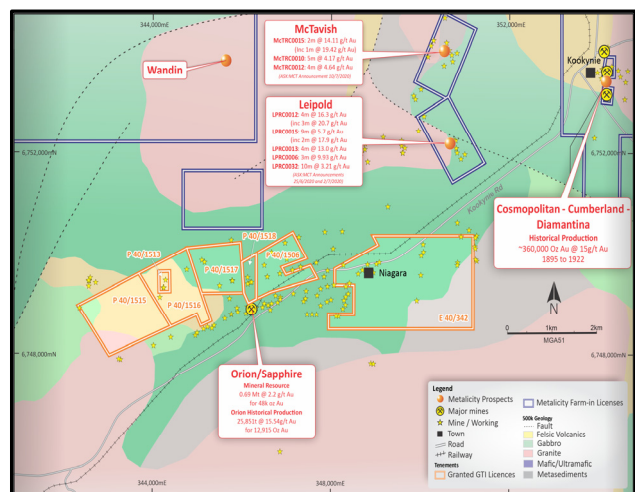
HENRY MOUNTAINS URANIUM/VANADIUM, UTAH, USA

The Company has ~1,500 hectares of land holdings in the Henry Mountains region of Utah, within Garfield & Wayne Counties. Exploration is currently focused on approximately 5kms of mineralised trend that extends between the Rat Nest & Jeffrey claim groups & includes the Section 36 state lease block. Uranium & vanadium mineralisation in this location is generally shallow at 20-30m average depth. The region forms part of the prolific Colorado Plateau uranium province which historically provided the most important uranium resources in the USA. Sandstone hosted ores have been mined in the region since 1904 and the mining region has historically produced in excess of **17.5Mt @ 2,400ppm U₃O₈ (92 mlbs U₃O₈) and 12,500 ppm V₂O₅ (482 mlbs V₂O₅)⁴.**



NIAGARA (KOOKYNIIE) GOLD, WESTERN AUSTRALIA⁵

The Niagara project is located ~6 km southwest of Kookynie in the central goldfields of Western Australia. The project comprises one granted exploration licence, E40/342, and six granted prospecting licences, P40/1506, P40/1513, P40/1515, P40/1516, P40/1517 and P40/1518. Access to the project is provided via Goldfields Highway from the town of Menzies and the sealed Kookynie Road which bisects the northern part of exploration licence E40/342 & the southern part of P40/1506 (**Figure 5**). The project is located within the central part of the Norseman-Wiluna greenstone belt. GTI continues to evaluate its options for advancing exploration of the Niagara Gold Project & expects to advise of next steps with the project during the coming months whilst it prioritises exploration of its uranium projects.



⁴ Geology and recognition criteria uranium deposits of the salt wash types, Colorado Plateau Province, Union Carbide Corp, 1981, page 33

⁵ <https://www.asx.com.au/asx/statistics/displayAnnouncement.do?display=pdf&idsid=02401075>

1. JORC CODE, 2012 EDITION – TABLE 1 REPORT TEMPLATE

1.1 Section 1 Sampling Techniques and Data

(Criteria in this section apply to all succeeding sections.)

Criteria	JORC Code explanation	Commentary
Sampling techniques	<ul style="list-style-type: none"> Nature and quality of sampling (eg cut channels, random chips, or specific specialised industry standard measurement tools appropriate to the minerals under investigation, such as down hole gamma sondes, or handheld XRF instruments, etc). These examples should not be taken as limiting the broad meaning of sampling. Include reference to measures taken to ensure sample representivity & the appropriate calibration of any measurement tools or systems used. Aspects of the determination of mineralisation that are Material to the Public Report. In cases where 'industry standard' work has been done this would be relatively simple (eg 'reverse circulation drilling was used to obtain 1 m samples from which 3 kg was pulverised to produce a 30 g charge for fire assay'). In other cases more explanation may be required, such as where there is coarse gold that has inherent sampling problems. Unusual commodities or mineralisation types (eg submarine nodules) may warrant disclosure of detailed information. 	<ul style="list-style-type: none"> Downhole instruments were utilized to measure natural gamma emission from the rock formation. Natural gamma data from a calibrated sonde was utilized to calculate eU₃O₈ grades. Geophysical logging was completed by Hawkins CBM Logging of Wyoming, utilising a recently calibrated gamma ray sonde for measurement of naturally occurring radioactivity (total gamma). Prior to deployment in the field, the sonde was calibrated at the U.S. Department of Energy uranium logging Test pits located in Casper, Wyoming, for the known range and uranium grades present at the Great divide Basin project.
Drilling techniques	<ul style="list-style-type: none"> Drill type (eg core, reverse circulation, open-hole hammer, rotary air blast, auger, Bangka, sonic, etc) and details (eg core diameter, triple or standard tube, depth of diamond tails, face-sampling bit or other type, whether core is oriented and if so, by what method, etc). 	<ul style="list-style-type: none"> 39 rotary drill holes have been completed to date. The drill program is continuing. All holes were vertical and 5 inches in diameter.
Drill sample recovery	<ul style="list-style-type: none"> Method of recording and assessing core and chip sample recoveries and results assessed. Measures taken to maximise sample recovery and ensure representative nature of the samples. Whether a relationship exists between sample recovery and grade and whether sample bias may have occurred due to preferential loss/gain of fine/coarse material. 	<ul style="list-style-type: none"> Where practical rotary samples were collected for possible assay Samples were taken at 5-foot increments for lithological logging and have been preserved for future reference.

Criteria	JORC Code explanation	Commentary
Logging	<ul style="list-style-type: none"> • Whether core and chip samples have been geologically and geotechnically logged to a level of detail to support appropriate Mineral Resource estimation, mining studies & metallurgical studies. • Whether logging is qualitative or quantitative in nature. Core (or costean, channel, etc) photography. • The total length and percentage of the relevant intersections logged. 	<ul style="list-style-type: none"> • Lithologic logging of all drill holes was completed by geologists under the direction of the CP. • Geophysical logging provided qualitative analyses of radiometric equivalent uranium thickness and grade. •
Sub-sampling techniques and sample preparation	<ul style="list-style-type: none"> • If core, whether cut or sawn & whether quarter, half or all core taken. • If non-core, whether riffled, tube sampled, rotary split, etc and whether sampled wet or dry. • For all sample types, the nature, quality and appropriateness of the sample preparation technique. • Quality control procedures adopted for all sub-sampling stages to maximise representivity of samples. • Measures taken to ensure that the sampling is representative of the in situ material collected, including for instance results for field duplicate/second-half sampling. • Whether sample sizes are appropriate to the grain size of the material being sampled. 	<ul style="list-style-type: none"> • No core was taken. • Rotary samples were collected for lithological identification.
Quality of assay data and laboratory tests	<ul style="list-style-type: none"> • The nature, quality and appropriateness of the assaying and laboratory procedures used and whether the technique is considered partial or total. • For geophysical tools, spectrometers, handheld XRF instruments, etc, the parameters used in determining the analysis including instrument make and model, reading times, calibrations factors applied and their derivation, etc. • Nature of quality control procedures adopted (eg standards, blanks, duplicates, external laboratory checks) and whether acceptable levels of accuracy (ie lack of bias) and precision have been established. 	<ul style="list-style-type: none"> • The data was limited to eU₃O₈ calculations based on data supplied by a calibrated downhole gamma sonde. • Natural gamma data from a calibrated sonde was utilized to calculate eU₃O₈ grades. • Geophysical logging was completed by Hawkins CBM Logging of Wyoming, utilising a recently calibrated gamma ray sonde for measurement of naturally occurring radioactivity (total gamma). • Prior to deployment in the field, the sonde was calibrated at the U.S. Department of Energy uranium logging Test pits located in Casper, Wyoming. • eU₃O₈ grade is considered to be an equivalent assay value • Rotary samples were collected for lithological identification.
Verification of sampling and	<ul style="list-style-type: none"> • The verification of significant intersections by either independent or alternative company personnel. • The use of twinned holes. 	<ul style="list-style-type: none"> • All data was reviewed by the CP. • No adjustments made to the raw gamma data, or to the calculated eU₃O₈ values outside of standard industry methods.

Criteria	JORC Code explanation	Commentary
assaying	<ul style="list-style-type: none"> Documentation of primary data, data entry procedures, data verification, data storage (physical and electronic) protocols. Discuss any adjustment to assay data. 	
Location of data points	<ul style="list-style-type: none"> Accuracy and quality of surveys used to locate drill holes (collar and down-hole surveys), trenches, mine workings and other locations used in Mineral Resource estimation. Specification of the grid system used. Quality and adequacy of topographic control. 	<ul style="list-style-type: none"> Existing drill holes were surveyed with a Trimble Geo XT GPS, with +/- 0.3m accuracy for northing and easting. Topographic Control (elevation) is from GPS. Accuracy +/- 0.5m Drill hole locations are shown on Figure 1. Location data was collected in latitude and longitude as well as State Plane coordinates.
Data spacing and distribution	<ul style="list-style-type: none"> Data spacing for reporting of Exploration Results. Whether the data spacing and distribution is sufficient to establish the degree of geological and grade continuity appropriate for the Mineral Resource and Ore Reserve estimation procedure(s) and classifications applied. Whether sample compositing has been applied. 	<ul style="list-style-type: none"> Spatial distribution of drill holes was planned to identify the REDOX boundaries indicated by historical data. Downhole gamma logging data was interpreted on 6-inch (0.15m) intervals following standard uranium industry practice in the U.S.
Orientation of data in relation to geological structure	<ul style="list-style-type: none"> Whether the orientation of sampling achieves unbiased sampling of possible structures and the extent to which this is known, considering the deposit type. If the relationship between the drilling orientation and the orientation of key mineralised structures is considered to have introduced a sampling bias, this should be assessed and reported if material. 	<ul style="list-style-type: none"> No bias was imparted on the downhole data collected. Mineralisation is generally flat-laying and completed drill holes were vertical.
Sample security	<ul style="list-style-type: none"> The measures taken to ensure sample security. 	<ul style="list-style-type: none"> Geophysical logging data was provided electronically and was provided to GTI and is stored on BRS' local data server which has internal backup and offsite storage protocols in place.
Audits or reviews	<ul style="list-style-type: none"> The results of any audits or reviews of sampling techniques and data. 	<ul style="list-style-type: none"> No audits or reviews have been undertaken on the downhole geophysical survey data. The calibration data & methods were reviewed & verified by the CP.

1.2 Section 2 Reporting of Exploration Results

(Criteria listed in the preceding section also apply to this section.)

Criteria	JORC Code explanation	Commentary
Mineral tenement and land tenure status	<ul style="list-style-type: none"> Type, reference name/number, location and ownership including agreements or material issues with third parties such as joint ventures, partnerships, overriding royalties, native title interests, historical sites, wilderness or national park and environmental settings. The security of the tenure held at the time of reporting along with any known impediments to obtaining a licence to operate in the area. 	<ul style="list-style-type: none"> The Great divide Basin Project is located on unpatented mining lode claims. The Thor portion of the project is shown on figure 1. The mining claims will remain valid so long as annual assessment and recordation payments are made.
Exploration done by other parties	<ul style="list-style-type: none"> Acknowledgment and appraisal of exploration by other parties. 	<ul style="list-style-type: none"> Exploration for uranium occurred until the late 1970s to early 1980s. Limited information and/or data is available from these activities.
Geology	<ul style="list-style-type: none"> Deposit type, geological setting and style of mineralisation. 	<ul style="list-style-type: none"> Uranium deposits associated with fluvial channels and reducing environments within fluvial sandstones. (sandstone-type roll-front uranium deposits)
Drill hole Information	<ul style="list-style-type: none"> A summary of all information material to the understanding of the exploration results including a tabulation of the following information for all Material drill holes: <ul style="list-style-type: none"> easting and northing of the drill hole collar elevation or RL (Reduced Level – elevation above sea level in metres) of the drill hole collar dip and azimuth of the hole down hole length and interception depth hole length. If the exclusion of this information is justified on the basis that the information is not Material and this exclusion does not detract from the understanding of the report, the Competent Person should clearly explain why this is the case. 	<ul style="list-style-type: none"> The location of all existing drill holes is presented in Figure 1. All drill holes are vertical, with measured thicknesses interpreted to equal true thicknesses. All drill holes were approximately 15 cm in diameter. Tables 1 provides the depth, thickness, and equivalent grade of uranium summarized by intercepts data 0.02% eU₃O₈ cut off. Radiometric data is available in the standard US one half foot (6 inches or 15 cm) thicknesses.
Data aggregation	<ul style="list-style-type: none"> In reporting Exploration Results, weighting averaging techniques, maximum and/or minimum grade truncations (eg cutting of high grades) and cut-off grades are usually Material and should be stated. 	<ul style="list-style-type: none"> eU₃O₈ grades were interpreted on 6-inch (15 cm) intervals following standard uranium industry practice in the U.S. No eU₃O₈ grade calculations were reported for gamma intercepts below 0.02% eU₃O₈.

Criteria	JORC Code explanation	Commentary
<i>methods</i>	<ul style="list-style-type: none"> Where aggregate intercepts incorporate short lengths of high grade results and longer lengths of low grade results, the procedure used for such aggregation should be stated and some typical examples of such aggregations should be shown in detail. The assumptions used for any reporting of metal equivalent values should be clearly stated. 	
<i>Relationship between mineralisation widths and intercept lengths</i>	<ul style="list-style-type: none"> These relationships are particularly important in the reporting of Exploration Results. If the geometry of the mineralisation with respect to the drill hole angle is known, its nature should be reported. If it is not known and only the down hole lengths are reported, there should be a clear statement to this effect (eg 'down hole length, true width not known'). 	<ul style="list-style-type: none"> All drill holes were vertical. Mineralisation within the district is controlled in part by sedimentary bedding features within a relatively flat lying depositional unit. Downhole lengths (intercepts) are believed to accurately represent true widths.
<i>Diagrams</i>	<ul style="list-style-type: none"> Appropriate maps and sections (with scales) and tabulations of intercepts should be included for any significant discovery being reported. These should include, but not be limited to a plan view of drill hole collar locations and appropriate sectional views. 	<ul style="list-style-type: none"> Gamma logging results (eU₃O₈ grades) are discussed and reported in the text. eU₃O₈ grades are reported on Tables 1 with drill hole locations presented in Figure 1.
<i>Balanced reporting</i>	<ul style="list-style-type: none"> Where comprehensive reporting of all Exploration Results is not practicable, representative reporting of both low and high grades and/or widths should be practiced to avoid misleading reporting of Exploration Results. 	<ul style="list-style-type: none"> All available results have been reported
<i>Other substantive exploration data</i>	<ul style="list-style-type: none"> Other exploration data, if meaningful and material, should be reported including (but not limited to): geological observations; geophysical survey results; geochemical survey results; bulk samples – size and method of treatment; metallurgical test results; bulk density, groundwater, geotechnical and rock characteristics; potential deleterious or contaminating substances. 	<ul style="list-style-type: none"> All available results have been reported
<i>Further work</i>	<ul style="list-style-type: none"> The nature and scale of planned further work (e.g. tests for lateral extensions or depth extensions or large-scale step-out drilling). Diagrams clearly highlighting the areas of possible extensions, including the main geological interpretations and future drilling areas, provided this information is not commercially sensitive. 	<ul style="list-style-type: none"> Further work will include continuation of the planned 100-hole program.