

VIKING RECEIVES HIGH-GRADE RESULTS IN FIRST ASSAYS FROM 72-HOLE RC DRILLING PROGRAMME

- Reverse Circulation (RC) drilling programme completed with 72 holes for 6,723 metres drilled over 4 target areas
- First assay results received for 7 holes, delivering high-grade, near-surface intercepts, with key results including:
 - VKRC0023: 2m at 9.67g/t Au from 26m
 - VKRC0066: 2m at 4.26g/t Au from 75m
- First set of results support the potential for an additional mineralised shoot 720m north of the historic, high-grade First Hit Gold Mine
- All samples shipped to the laboratory over 7 consignments
- Gold nuggets and gold in quartz associated with historic workings at Jana's Reward target found, with additional hole planned and drilled to test below old workings

Viking Mines Limited (ASX: VKA) ("Viking" or "the Company") is pleased to report completion of its 72 hole, 6,723m RC Drilling Programme at the flagship First Hit Project ("First Hit" or "the Project"), 50km west of Menzies in the WA Goldfields.

Viking is also pleased to announce the first set of assay results have been received for 7 of the 72 holes completed (~10% of the programme). These first results are from the First Hit North target area and, importantly, confirm the presence of **high-grade gold** mineralisation 720m north of the historic high grade First Hit gold mine.

Hole VKRC0023 returned **2m at 9.67g/t Au** from 26m downhole and hole VKRC0066 returned **2m at 4.26g/t Au** from 75m (located 40m to the south and 40m downdip of hole VKRC0023). Whilst many results are still pending and interpretation is required, the first set of results support the potential for a mineralised shoot 720m north of the historic First Hit gold mine (Figure 1). Additional assays received also confirmed the presence of gold 220m north of the historic First Hit mine workings with 2 additional potential shoot positions now identified outside of the limits of the First Hit mine workings.

In total, the 72 hole, 6,723m drill programme tested 4 targets, with visible gold identified in 5 drillholes to date^{1&2}. Included in this total are 7 additional holes for 724m that were planned and completed to test additional areas at the First Hit North and Jana's Reward targets which were identified as drilling progressed.

The additional holes were planned based on the visible gold seen at First Hit North. The visible gold gave the exploration team the confidence for an additional drill traverse testing 300m north of the planned limits of drilling (Figure 2). Additionally, based on gold nuggets and gold in quartz (Figure 3 & Figure 4) identified in historic workings at Jana's Reward, the Company planned and drilled one hole to 70m. Assay results for these holes are pending.

Commenting on the completion of the RC drilling programme and receipt of high-grade results from the first set of assays, Viking Mines Managing Director & CEO Julian Woodcock said, "The first set of assay results from our extensive 72-hole, 6,723m



drill programme highlight the excellent potential of our First Hit Project to host multiple mineralised high-grade shoots."

"Viking has been consistently executing an exploration strategy focused on identifying narrow-vein, high-grade shoots and holes VKRC0023 and VKRC0066 provide the Company with exposure to previously undiscovered mineralisation."

"We are still in the early stages of exploring First Hit and we are buoyed by the results we have received throughout 2021. Importantly, with over 90% of drillhole assay results from this programme still to be returned, these results will provide critical information to direct future exploration plans around these exciting new prospects."

ASSAY RESULTS

First Hit North

Assay results have been received for 735 samples (exc. QAQC) at the time of this release.

This represents only 7 drillholes (26%) of the 27 holes completed at the First Hit North target (Figure 1 & Figure 2) and <10% of the 72 holes drilled in total across the 4 target areas. The results include all the samples for the 5 drillholes where visible gold has been observed at the expected target intervals^{1&2}. Significant results received to date are:

720m North of the First Hit historic mine workings (Figure 1 & Figure 2):

- VKRC0023: 2m at 9.67g/t Au from 26m
- VKRC0066: 2m at 4.26g/t Au from 75m

These results confirm the presence of high-grade gold and the potential for a newly discovered high-grade shoot 720m North of the historic First Hit mine. Importantly, these results also support the observation of visible gold at the target intervals.

220m North of the First Hit historic mine workings (Figure 1 & Figure 2):

- VKRC0008: 1m at 4.56g/t Au from 64m
- VKRC0009: 1m at 2.55g/t Au from 98m

These results confirm the continuity of the First Hit structure from the historic workings and compare with the variable nature of the mineralisation as previously observed at First Hit.

Further assessment of the samples received is required, including additional Photon assay analysis on the remaining portion of the high-grade samples to determine the variability due to the relatively coarse nature of the gold seen in the RC chips. This will determine if there is a significant nugget effect occurring. A nugget effect is where repeat assays have a much higher or lower grade due to the nuggety nature of the mineralisation which is common with high-grade narrow vein deposits.

The frequency and occurrence of high-grade gold identified 720m North of the historic First Hit mine workings demonstrates the potential for a high-grade shoot to be defined with further drilling. At 80m drill spacing, a single high-grade result leaves sufficient untested strike length either side of the intercept to host a mineralised shoot up to 160m in length (distance to the adjoining drill sections). The planning of additional holes in the field (VKRC0066 & VKRC0067) to reduce the drill spacing and the subsequent intersection of gold in hole VKRC0066 confirms the continuity of a potential shoot. On receipt of the remaining assays for First Hit North, follow up drill programmes will be assessed.

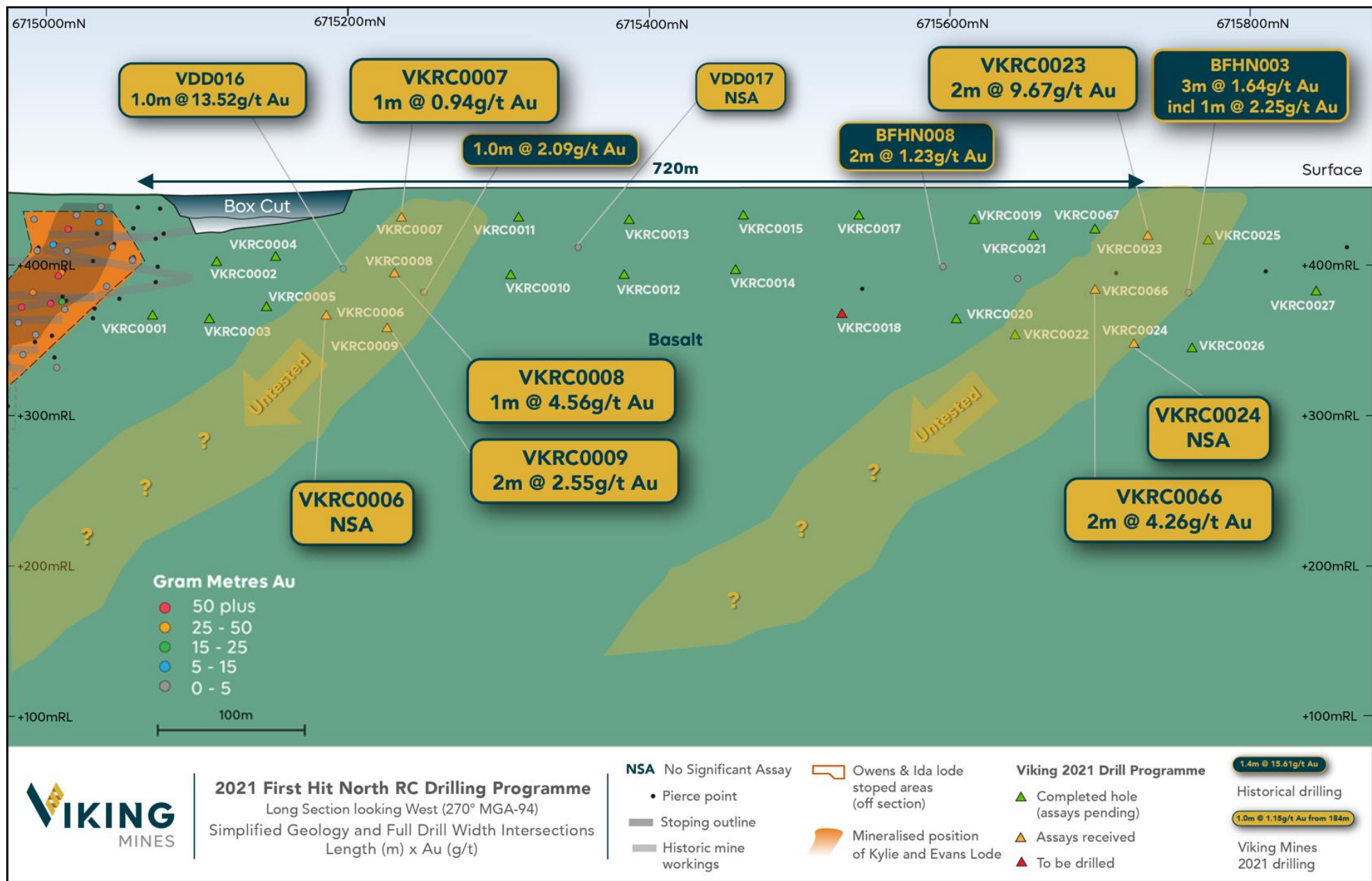


Figure 1; Long section of First Hit North target area showing assay results received up to the date of the news release (7 of the 27 completed drillholes) Note the high-grade results identified ~720m North of the historic mine workings. Outlines of potential lode positions (light orange) are based of the outline of mineralisation which occurs at the historic First Hit mine.

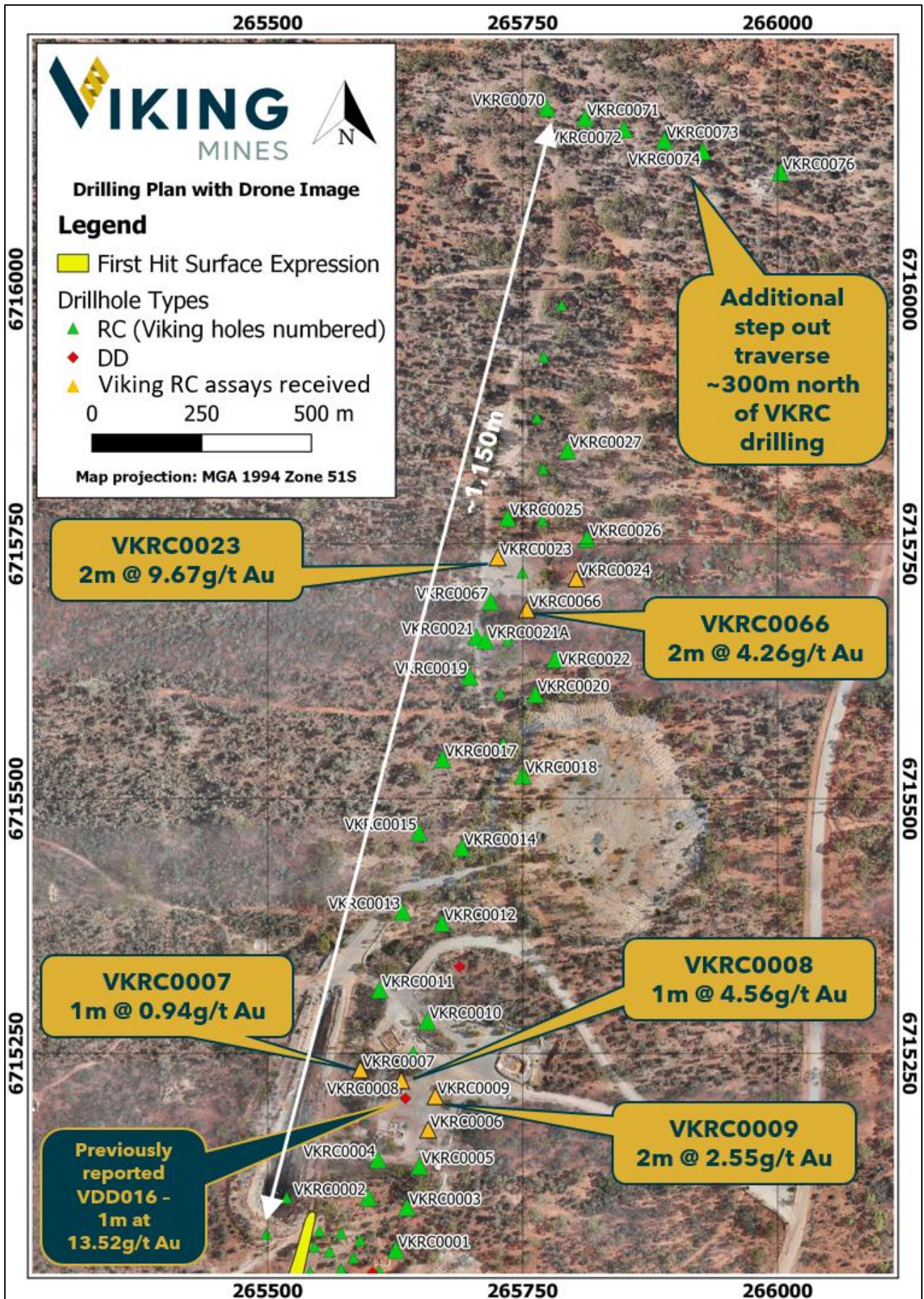


Figure 2; Map of the First Hit North target area with the assay results received to date. Note the location of the additional step out line 300m further North of the Viking RC drilling.



RC PROGRAMME STATUS

Drilling Summary

The planned RC drill programme to test multiple targets at the First Hit Project has been completed and the drilling crew has demobilised off site. Additional holes were planned in the field based on observations made whilst drilling advanced. On completion, the programme has totalled 72 holes for 6,723 metres (Table 1).

Table 1; First Hit Project targets tested as part of the 2021 RC drill programme with number of holes and metres drilled detailed

Prospect	No Holes	Metres
First Hit North	30	2,437
First Hit North additional traverse	6	654
First Hit South	14	1,669
Twin Peaks	10	903
Jana's Reward	11	990
Jana's Reward additional hole testing old workings	1	70
TOTAL	72	6,723

The planned RC programme took 44 drilling days to complete, at an average of 153 metres per drilling day against a budget of 38 drilling days at 180m per day. Two breakdowns during the programme and other technical issues pushed out the completion date by 4 weeks from mid-November to mid-December.

Additional Drilling

Jana's Reward - Whilst undertaking drilling at the Jana's reward prospect, shallow historic prospectors workings were identified in the NW corner of the target area. The workings are focussed on a ~1m wide E-W quartz vein which dips to the south at approximately 40° and has been mined near surface. Surface prospecting near the old workings discovered 11 nuggets totalling ~1g of gold nuggets (Figure 3) and gold in quartz (Figure 4), confirming the presence of coarse gold.

With the confirmation of coarse gold and the perpendicular orientation of the veins to the First Hit mineralisation, the Company planned and drilled one hole to 70m depth which was drilled towards the NNE.

The objective of this drillhole was to test the mineralisation for:

- a) Continuity to depth from surface
- b) Obtain a sample for analysis
- c) Confirm the dip and orientation

Drilling was completed as planned and all 3 objectives met. A 1m quartz vein was intercepted at 49m downhole associated with silica alteration and sulphide mineralisation from 47m to 51m. The intercept of the vein supports the interpretation and modelling based on the surface observations of the old workings and confirms the vein continues to a vertical depth of ~33m and remains open.

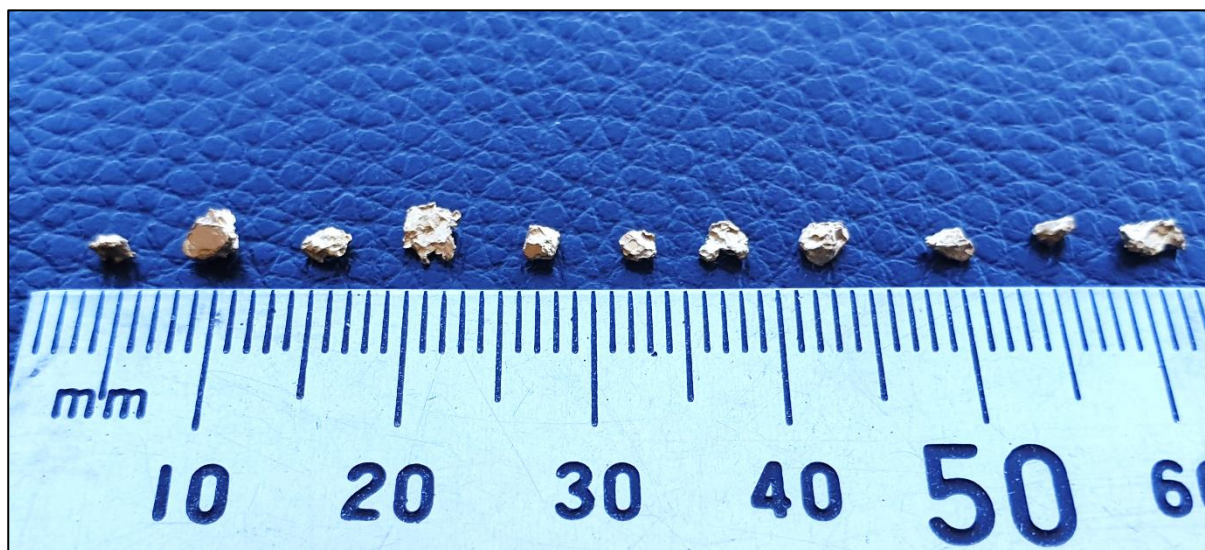


Figure 3; Range of gold nuggets totalling ~1g found proximal to the historic workings at the Jana's Reward target confirming the presence of coarse gold.

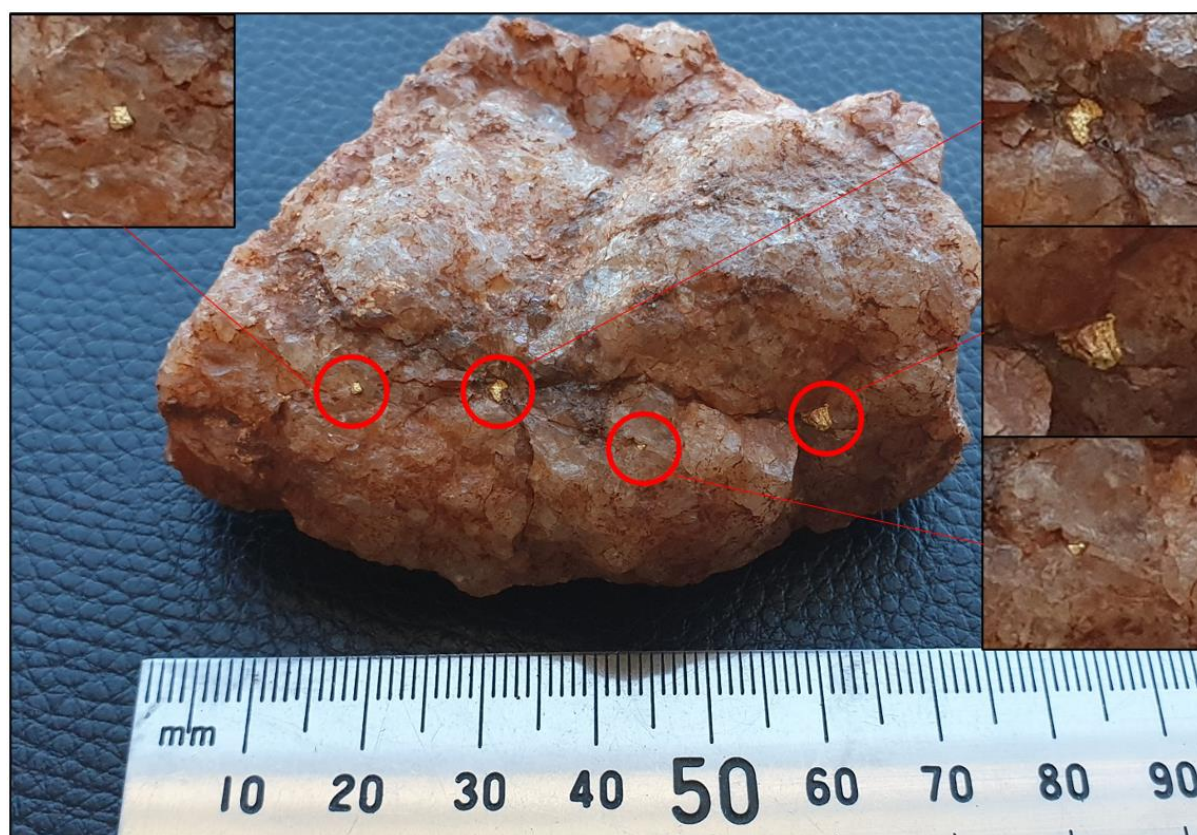


Figure 4; Gold in quartz found in the waste piles adjoining the historic prospectors workings at the Jana's Reward target.

First Hit North - Drill targeting has been successful in confirming that the First Hit structure extends North from the First Hit Mine up to 720 metres along strike with the discovery of visible gold in hole VKRC0023¹ and the high-grade assay of 2m at 9.67g/t Au.

Based on the visible gold observed and the potential for additional shoots to exist on the First Hit structure, the company decided to extend the drill programme out a further 300m beyond the original planned limits of drilling to test for the continuity of the structure (Figure 2).



A section line traverse was designed across the First Hit structure location and to test a coincident gravity low, magnetic high (Figure 5) and contact between basalt and ultramafic host rocks. A total of 6 holes for 654m was planned and subsequently drilled as a heel-to-toe traverse. Drilling identified a thicker weathering (regolith) profile which could explain the gravity low. Multiple rock types were encountered and zones of shearing which could indicate the potential continuity of the structure. Samples have been shipped to the laboratory and results will be required to determine if gold bearing mineralisation extends to >1.1km North from the historic First Hit mine (Figure 2).

Lab Turnaround and Results Forecast

All samples from drilling have been collected and despatched from site to the Intertek laboratory in Kalgoorlie. A total of 7 consignments have been delivered to the laboratory with the first delivery occurring on 15 October 2021 and the last delivery on 20 December 2021. The laboratory has been experiencing increasing delays in part due to COVID vaccine mandates impacting staff availability. Based on the current turnaround times being experienced and the timing of the delivery of samples to the laboratory, it is expected that all results will be received by late in the March quarter FY22 (subject to no further delays by the lab).

NEXT STEPS

Following completion of the field activities component of the drill programme, the following activities are underway on the project:

- Loading of all drilling data and verification in 3D software as assays are returned
- Commencement of 3D modelling of the mineralised structures observed in drilling
- Photon assay technique to be applied on identified mineralised zones to determine if any coarse gold is present which could increase the variability of grade observed in the assay results (Photon assay techniques vs fire assay)
- Selection of key samples for multielement analysis to assist in geological interpretation of host rock types and potential vectoring to high grade mineralisation and targeting

END

This announcement has been authorised for release by the Board of the Company.

Julian Woodcock
Managing Director and CEO
Viking Mines Limited

For further information, please contact:
Viking Mines Limited
Sarah Wilson - Company Secretary
08 6245 0870

Media & Investor Relations
Citadel-MAGNUS
Cameron Gilenko +61 466 984 953
Jonathan van Hazel +61 411 564 969

¹ ASX Announcement of 1 November 2021 - Viking sights visible gold in RC drilling 720m North of historic First Hit gold mine

² ASX Announcement of 15 November 2021 - Viking sees more visible gold in First Hit North RC drilling

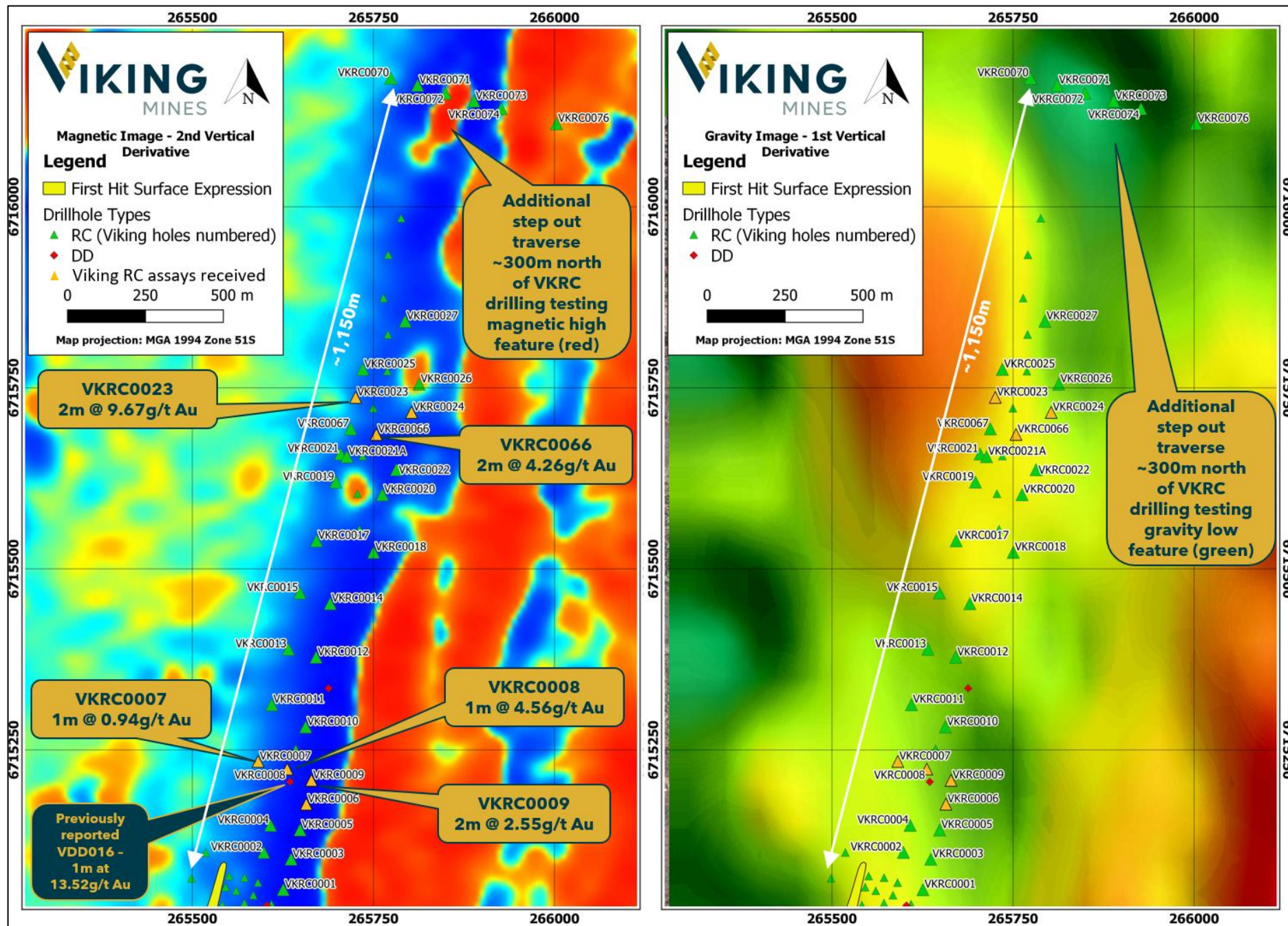


Figure 5; Maps of the First Hit North target area with drilling results and drillcollar locations with geophysical data. Magnetic 2nd vertical derivative (left) and gravity 1st vertical derivative (right). Note location of additional traverse planned to the north across the respective magnetic high units and gravity low.

ABOUT VIKING MINES

Viking Mines is a gold focussed company with the **First Hit Project** located 150km NW of Kalgoorlie in Western Australia being the primary asset under exploration.

Viking have an aggressive exploration strategy to explore for high grade gold occurrences and discover ounces along fertile gold structures. The historically mined, First Hit gold mine is the focus of Vikings activity to deliver on this strategy. Rapid advancement and exploration are occurring to explore, discover and develop gold ounces at the Project. The strategy will generate shareholder value through the discovery of new gold resources.

First Hit Project, Western Australia

The **First Hit Project** is centred around the historic high-grade First Hit gold mine situated along the prospective Ida and Zuleika Shear zones in the Eastern Goldfields of Western Australia. The Project incorporates ~28km² of tenements with 6 active Mining and Prospecting licences and 1 Exploration licence under application. At the core of this landholding is a 6.4km² group of contiguous tenements which host the historic First Hit gold mine.

Prior to closure of the First Hit gold mine by Barra Resources in 2002 and at a time of depressed gold prices of US\$ 320/oz, the First Hit mine produced ~30koz ounces of gold at an average grade of ~7.7g/t Au. No modern exploration activity has been conducted in the past 18 years and creates a significant opportunity for Viking. The Company is focused on delivering exploration programmes to test near mine extensions and regional targets around the **First Hit Project** with the objective of defining fertile structures and discovering gold ounces.

Examples of the high-grade nature of the mineralisation previously drilled at First Hit include:

- 4.9m at 64.8g/t Au from 62.1m (FHU045)¹
- 3m at 77.6g/t Au from 224.0m (BFH030)¹
- 4m at 26.1g/t Au from 58.0m (BFH005)¹

The Project area is well serviced by infrastructure and is located 50km west of the sealed Goldfields highway and the township of Menzies. The nearest operating Gold Processing Plant is the Davyhurst Mill 50km to the south, owned and operated by Ora Banda Mining (ASX:OBM). The nearest operating gold mine is the Riverina open pit, located 8km south of the First Hit gold mine, owned by OBM.

The Company also has projects located in Ghana. Viking is currently undergoing legal proceedings to secure costs and interest associated with the sale of the Akoase project in Ghana.

Forward-Looking Statements

This document may include forward-looking statements. Forward-looking statements include, but are not limited to, statements concerning Viking Mines Limited's planned exploration program and other statements that are not historical facts. When used in this document, the words such as "could," "plan," "estimate," "expect," "intend," "may," "potential," "should," and similar expressions are forward-looking statements. Although Viking Mines Limited believes that its expectations reflected in these forward-looking statements are reasonable, such statements involve risks and uncertainties and no assurance can be given that actual results will be consistent with these forward-looking statements.

Competent Persons Statement

Information in this release that relates to historical Exploration Results on the Western Australian projects is based on information compiled by Mr Ian Stockton, who is a Member of the Australian Institute of Mining and Metallurgy (AusIMM). Mr Stockton is a full-time employee of CSA Global. Mr Stockton is engaged by Viking Mines Ltd as an independent consultant. Mr Stockton has sufficient experience which is relevant to the style of mineralisation and type of deposit under consideration and to the activity being undertaken to qualify as a Competent Person as defined in the 2012 Edition of the 'Australasian Code for Reporting of Exploration Results, Mineral Resources and Ore Reserves'. The exploration results were first reported to ASX on 26 November 2020. The Company confirms that it is not aware of any new information or data that materially affects the information and all material assumptions and technical parameters underpinning the estimates continue to apply and have not materially changed. The Company confirms that the form and context in which the Competent Persons' findings are presented have not been materially modified from the original.



¹ASX announcement dated 26th November 2020



APPENDIX 1 - ANALYTICAL RESULTS

Hole ID	Hole Type	East	North (m)	RL	End of Hole (m)	Azi	Dip (°)	Depth	Downhole Length (m)	Au
		(m) MGA94	MGA94			(°)		From (m)		g/t
VKRC0007	RC	265591	6715235	448	42	285	-60	14	1	0.94
VKRC0008	RC	265630	6715224	446	85	285	-60	64	2	2.52
VKRC0009	RC	265669	6715214	445	120	285	-60	98	2	2.55
VKRC0023	RC	265726	6715737	443	52	285	-60	26	2	9.67
VKRC0066	RC	265754	6715686	446	101	285	-60	75	2	4.26

APPENDIX 2 - JORC TABLES

COMPETENT PERSONS STATEMENT

Information in this release that relates to new Exploration Results on the Western Australian projects is based on information compiled by Mr Ian Stockton, who is a Member of the Australian Institute of Mining and Metallurgy (AusIMM). Mr Stockton is a full-time employee of CSA Global. Mt Stockton is engaged by Viking Mines Ltd as an independent consultant. Mr Stockton has sufficient experience which is relevant to the style of mineralisation and type of deposit under consideration and to the activity being undertaken to qualify as a Competent Person as defined in the 2012 Edition of the 'Australasian Code for Reporting of Exploration Results, Mineral Resources and Ore Reserves'. Mr Stockton consents to the inclusion in the release of the matters based on his information in the form and the context in which it appears.

JORC Table 1

Criteria	JORC Code explanation	Commentary
Sampling techniques	<i>Nature and quality of sampling (e.g. cut channels, random chips, or specific specialised industry standard measurement tools appropriate to the minerals under investigation, such as downhole gamma sondes, or handheld XRF instruments, etc.). These examples should not be taken as limiting the broad meaning of sampling.</i>	<p><u>Historical Surface Geochemistry</u></p> <p>Several companies have undertaken surface exploration through the history of the tenement including Riverina Gold, Croesus Gold, WMC, Barmingo and Barra Gold. A total of 24,289 samples have been collected, however CSA Global has limited information on these surveys apart from WMC and Barmingo, as described below.</p> <p>WMC mining completed several phases of soil geochemistry between 1990 and 1992 with 2,836 samples collected. This included:</p> <ul style="list-style-type: none"> Stream sediment geochemistry from active streams from contemporary lags within stream beds. 2 kg pan concentrate samples collected from trap sites in active drainage channels. Soil samples collected from 5-15 cm depth or 15-30 cm depth depending on soil thickness and passed through -10#, +36#, -80# or 120# meshes. Surface soil sampling was sieved through a 6 mm mesh. <p>Barmingo Pty Ltd undertook 2 geochemical soil geochemistry programs on the northern part of M30/99 between 1995 and 2000. The first soil survey completed was designed to test areas of residual soil and outcrop, whereas the second soil survey tested areas covered by shallow transported cover. In areas of residual soil and outcrop -80 mesh soil samples were collected on a 50 m x 50 m</p>



Criteria	JORC Code explanation	Commentary
		<p>spaced grid and analysed for gold and arsenic. In areas of transported cover, a preliminary 100 m x 400 m spaced auger soil sampling program was undertaken.</p> <p>The details of the sampling methods and horizons tested for the -80# mesh soil sampling and auger sampling are not described. WMC collected ironstone float rock chip samples (number unknown) across the tenements.</p> <p>Barminto completed undertook rock chip sampling between 1996 and 2002, though the number of samples collected is unknown. Rock chips are described as being collected also taken in areas with cover, laterite development and recent drainage areas for pathfinder and mapping purposes.</p> <p><u>Historical Surface Drilling</u></p> <p>WMC completed 13 RC drill holes and one diamond drill hole during their tenure between 1990 and 1992. No descriptions of the nature of the sampling are available.</p> <p>Barminto completed core and diamond drilling of holes up to 346 metres below surface over the First Hit Project area mineralisation. 21 RC holes were completed north and south along strike from the deposit testing for repeats of the First Hit mineralisation.</p> <p>Percussion samples were split at the drill sites and a 2-5 kg sample was taken for processing and analysis. Probable waste zones were sampled by compositing over 2-4 metres and individual samples were retested if the composites were anomalous.</p> <p>Diamond drill core from was split length ways and half was used for initial analysis whilst the remaining half was used for reference material (kept used for metallurgical testing as required).</p> <p><u>Historical Underground Ore Control and Definition:</u></p> <p>Underground resource definition drilling using drill core provided solid core samples for analysis. During mining operations face channels and production drill holes were used to assist with ore definition and control. Whole core was sampled from UG drill core.</p> <p><u>Historical Underground Face Sampling</u></p> <p>As drives advanced Barminto geologists/technicians carried out rock chip sampling across the exposed drive face. Not all drive advance faces were mapped or sampled. The sampling was treated similarly to a drill hole although typically undertaken as a 'channel' rock chip sample along a pre-determined line at right angles to the dip of the vein structures/mineralisation. The face was mapped and significant geological features recorded. The sample line attitude (dip), sample number, sample length, and sample lithology recorded. In addition, the assay result for gold (Au) were recorded following receipt.</p> <p><u>Summary of Current VKA 2021 RC Exploration Drilling and Sampling</u></p> <p>RC samples are collected at the drill rig during the drilling process. Samples are collected from a cone splitter by placing a calico bag across the two sample apertures as well as a bucket under the splitter to collect the reject. Samples are collected every metre drilled with the reject being dumped on the ground and the two calicoes being placed on top. Each of the calico sample bags are between 2 and 3kg in weight with one being collected for assay at Intertek laboratories in Kalgoorlie for 50g fire assay analysis. The Competent Person considers these sampling methods appropriate for this style of mineralisation.</p>
	<p><i>Include reference to measures taken to ensure sample representivity and the appropriate calibration of any measurement tools or systems used.</i></p>	<p><u>Historical Information</u></p> <p>The entire RC sample was collected and sampled at the drill rig; samples from diamond drilling were subsampled in a core handling facility. Diamond and RC field duplicates were taken on selected intervals within the interpreted mineralised horizons to measure representativity of sample splits.</p> <p><u>Historical Underground Face Sampling</u></p> <p>No information is provided in available reports to ascertain the representivity of the face sampling, though some face maps show both selective and mark ups for sampling lines across the lode. No information has been located relating to QAQC procedures such as duplicate sampling, certified standards or laboratory repeats or standards.</p>

Criteria	JORC Code explanation	Commentary																																																						
		<u>Summary of Current VKA 2021 RC Exploration Drilling and Sampling</u> RC sample recovery is monitored for excessive sample loss and recorded to ensure sample representivity. The Competent Person considers these sampling methods appropriate for this style of mineralisation.																																																						
	<i>Aspects of the determination of mineralisation that are Material to the Public Report. In cases where ‘industry standard’ work has been done this would be relatively simple (e.g. ‘reverse circulation drilling was used to obtain 1 m samples from which 3 kg was pulverised to produce a 30 g charge for fire assay’). In other cases more explanation may be required, such as where there is coarse gold that has inherent sampling problems. Unusual commodities or mineralisation types (e.g. submarine nodules) may warrant disclosure of detailed information</i>	<u>Historical Sample Preparation</u> Sample preparation for RC and diamond drilling consisted of coarse crushing a maximum of 3 kg of the submitted sample, pulverising to >85% passing 75 microns and homogenising the pulp for all sample types. 50 g sample sizes were chosen for analysis of gold, with fire assay fusion and detection by atomic absorption spectrometry (AAS). <u>Historical Underground Face Sampling</u> Available reports indicate gold distribution is often erratic and visible Au noted in many face samples. It is not known what steps were taken to address the issue of ‘nuggety’ Au and sample bias. Face sampling appears to have been both selective and along sampling lines on face maps. <u>Summary of Current VKA 2021 RC Exploration Drilling and Sampling</u> RC sample analysis: RC drilling was used to obtain a 1m composite sample from which 2-3kg is pulverised to produce a 50g charge for fire assay. Selective 1m samples are collected for multi-element analysis. The Competent Person considers these sampling and analytical methods appropriate for this style of mineralisation.																																																						
Drilling techniques	<i>Drill type (e.g. core, reverse circulation, open-hole hammer, rotary air blast, auger, Bangka, sonic, etc.) and details (e.g. core diameter, triple or standard tube, depth of diamond tails, face-sampling bit or other type, whether core is oriented and if so, by what method, etc.).</i>	<u>Historical Drilling</u> Drillhole data over the First Hit Project area comprised 295 holes, consisting of 187 RC, 3 surface diamond holes, 55 RAB holes, and 50 UG DDH holes, with an additional 504 UG face channel samples (collected as horizontal channels across the ore drive headings). RC samples were collected using a face-sampling, 4.5-inch diameter bit via the inner return tube to a sample splitter. Surface diamond core drilling utilised an NQ2 size (50.6 mm) drill bit. The core diameter for underground drilling could not be obtained from available reports however from the core photos the core size appears to be NQ.																																																						
		RC		DDH		RAB		UG_DDH		UG_CNHL		Total	Reverse Circulation		Surface Diamond Core Drilling		Rotary Air Blast		Underground Diamond Core Drilling		Underground Channel/Face Sampling		-	holes & (m)	% of total	holes & (m)	% of total	holes & (m)	% of total	holes & (m)	% of total	holes & (m)	% of total	-	187	23%	3	0%	55	7%	50	6%	504	63%	799	24,132	78%	545	2%	2,091	7%	2,190	7%	2,094	7%	31,052
		RC		DDH		RAB		UG_DDH		UG_CNHL		Total																																												
		Reverse Circulation		Surface Diamond Core Drilling		Rotary Air Blast		Underground Diamond Core Drilling		Underground Channel/Face Sampling		-																																												
		holes & (m)	% of total	holes & (m)	% of total	holes & (m)	% of total	holes & (m)	% of total	holes & (m)	% of total	-																																												
		187	23%	3	0%	55	7%	50	6%	504	63%	799																																												
24,132	78%	545	2%	2,091	7%	2,190	7%	2,094	7%	31,052																																														
<u>Summary of Current VKA 2021 RC Exploration Drilling</u> The current RC exploration programme consisted of 72 drill holes for 6,723m. The program commenced at the start of October 2021 and concluded in December 2021.																																																								



Criteria	JORC Code explanation	Commentary
Drill sample recovery	<i>Method of recording and assessing core and chip sample recoveries and results assessed.</i>	<p><u>Historical Information</u> No documentation regarding the measurement of drill core or RC recoveries could be found in the various reports and tables in the available data. The following comment is extracted from the 2001 First Hit Mine Ore Resource and Mining Report: "Sample recoveries throughout the drilling programs has been excellent (majority greater than 80%) with no major problems encountered" CSA Global briefly reviewed historical drill core stored on site (holes un-labelled) and core photographs of underground drill holes (FHU001, FHU019, FHU041, FHU044, FHU045, FHU046, FHU052, FHU055) and noted that core was in good condition with long intervals of unbroken core and no evidence of poor recoveries. CSA Global through examining core photos is satisfied that core recoveries were adequate though better documentation by the original project owners in this regard would have been more conclusive.</p> <p><u>Summary of Current VKA 2021 RC Exploration Drilling and Sampling</u> RC drilling recoveries are visually estimated and recorded as part of geological logging process. The Competent Person considers the recovery measurement methods appropriate for this style of mineralisation.</p>
	<i>Measures taken to maximise sample recovery and ensure representative nature of the samples.</i>	<p><u>Historical Information</u> Sampling techniques were chosen as appropriate for ground conditions to maximise sample recovery. There is no additional record of measures in place to maximise recovery.</p> <p><u>Summary of Current VKA 2021 RC Exploration Drilling and Sampling</u> RC drilling sample recovery is monitored to ensure representivity of the samples. Drilling used standard drilling equipment and procedures that are suitable to maximise sample recovery and the representative nature of the samples. The Competent Person considers these sampling techniques and measures to ensure representivity appropriate for this style of mineralisation.</p>
	<i>Whether a relationship exists between sample recovery and grade and whether sample bias may have occurred due to preferential loss/gain of fine/coarse material.</i>	<p><u>Historical Information</u> Insufficient information on sample recovery is available to establish whether a relationship between sample recovery and grade exists.</p> <p><u>Summary of Current VKA 2021 RC Exploration Drilling</u> RC drilling used standard drilling equipment and procedures that are suitable to maximise sample recovery and the representative nature of the samples. The Competent Person considers there to be a potential sampling bias related to the recovery/sampling at the First Hit mineralisation with RC drilling, however the method is suitable for exploration drilling.</p>
Logging	<i>Whether core and chip samples have been geologically and geotechnically logged to a level of detail to support appropriate Mineral Resource estimation, mining studies and metallurgical studies.</i>	<p><u>Historical Information</u> All RC and diamond drillholes were geologically logged to an industry standard appropriate for the mineralisation present at the project. All RC drill chip samples were geologically logged at 1 m intervals from surface to the end of each drillhole. Diamond core was photographed, and RC chips were retained in chip trays for future reference. Ausdrill completed three, NQ2 diamond drill holes at the First Hit deposit for geotechnical assessment prior to mining. The holes were designed in consultation with Golder Associates Pty Ltd and were targeted into the mineralised zones and continued on average 30 m into the footwall to assess the likely ground conditions for the decline and ore accesses. Approximately 70 metres of core was drilled for each hole allowing the hanging wall, the ore zone and the footwall zone to be assessed. Golder Associates Pty Ltd were commissioned to undertake the geotechnical assessment.</p>



Criteria	JORC Code explanation	Commentary
		<p>The Competent Person considers that the level of detail is sufficient for geotechnical studies.</p> <p><u>Historical Underground Face Sampling</u></p> <p>The underground face samples were used to guide mine development. Due to the lack of information regarding the quality of the face samples these should be regarded as qualitative only and can only be used to provide an indicative guide as the presence or otherwise of mineralisation.</p> <p><u>Summary of Current VKA 2021 RC Exploration Drilling and Sampling</u></p> <p>RC sample logging of rock chips samples from drill cuttings are undertaken as a first pass indication of potential gold and multi-element anomalism. Samples of rock chips from drill cuttings were logged by the geologist in the field, for parameters including, depth, colour, grain size, weathering, lithology, alteration, rock fabric and the presence of minerals potentially related to mineralisation including quartz and sulphides.</p> <p>The Competent Person considers the logging methods appropriate for this style of mineralisation.</p>
	<i>Whether logging is qualitative or quantitative in nature. Core (or costean, channel, etc.) photography.</i>	<p><u>Historical Information</u></p> <p>Lithological logging is qualitative in nature. Logged intervals were compared to the quantitative geochemical analyses to validate the logging.</p> <p>The Competent Person considers that the availability of qualitative and quantitative logging has appropriately informed the geological modelling, including weathering and oxidation, water table level and rock type.</p> <p><u>Historical Underground Face Sampling</u></p> <p>The logging of the underground face samples is qualitative only.</p> <p><u>Summary of Current VKA 2021 RC Exploration Drilling and Sampling</u></p> <p>Logging RC drilling is qualitative in nature. RC samples were photographed in chip trays.</p> <p>The Competent Person considers the logging methods appropriate for this style of mineralisation.</p>
	<i>The total length and percentage of the relevant intersections logged.</i>	<p><u>Historical Information</u></p> <p>The total length of all drilling was geologically logged.</p> <p><u>Historical Underground Face Sampling</u></p> <p>The underground face sampling hardcopy plans indicate in the majority of cases the face was sketch mapped and the 'channel' geologically logged with the sample length or interval recorded.</p> <p><u>Summary of Current VKA 2021 RC Exploration Drilling and Sampling</u></p> <p>All RC drilling was geologically logged for lithology, alteration and mineralisation including panning for coarse gold typical of the mineralised system.</p> <p>The Competent Person considers the logging methods appropriate for this style of mineralisation.</p>
Subsampling techniques and sample preparation	<i>If core, whether cut or sawn and whether quarter, half or all core taken.</i>	<p><u>Historical Information</u></p> <p>Diamond core was cut into two halves using a diamond core saw for surface drilling. One of the halves was placed into a numbered calico bag, which was tied and placed in a plastic/poly-weave bags for assaying.</p> <p>Underground DDH samples were whole core sampled.</p> <p><u>Summary of Current VKA 2021 RC Exploration Drilling and Sampling</u></p> <p>No Diamond drilling is being undertaken in the current drilling program</p>
	<i>If non-core, whether riffled, tube sampled, rotary split, etc. and whether sampled wet or dry.</i>	<p><u>Historical Information</u></p>



Criteria	JORC Code explanation	Commentary
		<p>RC samples were collected via a splitter to yield sub samples of approximately 3 kg from a 1 m downhole sample length. Expected waste zones were initially sampled as 2 m or 4 m composites and later resampled at 1 m intervals if anomalous assay results were returned. Re-sampling was undertaken using the spear sampling method</p> <p><u>Summary of Current VKA 2021 RC Exploration Drilling and Sampling</u></p> <p>All RC samples were collected via a cone splitter to yield dry sub samples of approximately 3kg from a 1 m downhole sample length. Two sub-samples are collected from every 1m downhole interval with the second sub sample being collected if re-sampling is required at a later date. Gold panning is being undertaken as part of the logging process to identify visible gold to assist with ongoing drill targeting.</p>
	<i>For all sample types, the nature, quality and appropriateness of the sample preparation technique.</i>	<p><u>Historical Information</u></p> <p>The Competent Person considers the historical methods described as appropriate for this style of mineralisation.</p> <p><u>Summary of Current VKA 2021 RC Exploration Drilling and Sampling</u></p> <p>The Competent Person considers the current methods and processes as described in previous sections as appropriate for this style of mineralisation.</p>
	<i>Quality control procedures adopted for all subsampling stages to maximise representivity of samples.</i>	<p><u>Historical Information</u></p> <p>The following is described from the First Hit Mine Ore Resources and Mining Report, 2001 and indicates duplicates were used to inform the resource model.</p> <p>“Several samples were often submitted for each positive assay. These were taken on site and submitted to the same laboratory under a different sample number and then assayed using the same technique. An average of these results for each interval has been used within the ore resource calculations”.</p> <p>CSA Global does not consider the above process to be suitable as a form of QAQC. The lack of CRMs is not industry practice. CSA Global recommends the application of industry standard QAQC to all future drilling programs.</p> <p><u>Historical Underground Face Sampling</u></p> <p>CSA Global were unable to establish QAQC processes involving the use of CRM, including blanks and standards.</p> <p><u>Summary of Current VKA 2021 RC Exploration Drilling and Sampling</u></p> <p>Duplicate sub sampling has been applied to the current RC drill programmes (see details below). Selective panning for gold to assist with targeting was also undertaken.</p> <p>The Competent Person considers the current methods of sampling as described as appropriate for this style of mineralisation.</p>
	<i>Measures taken to ensure that the sampling is representative of the in-situ material collected, including for instance results for field duplicate/second-half sampling.</i>	<p><u>Historical Information</u></p> <p>See comments above regarding the use of duplicates by Barminco. Several samples were often submitted for each positive assay. These were taken on site and submitted to the same laboratory under a different sample number and then assayed using the same technique. An average of these results for each interval has been used within the ore resource calculations.</p> <p><u>Historical Underground Face Sampling</u></p> <p>CSA Global were unable to establish representivity of the face samples or the use of field duplicates or assaying of sample splits.</p> <p><u>Summary of Current VKA 2021 RC Exploration Drilling and Sampling</u></p> <p>Field duplicates were collected from the cone splitter for every metre drilled. The second sample was selected as a duplicate on an ad-hoc basis either by trying to obtain a roughly 1:25 sample ratio or if the geologist identified a particular sample to be used as a duplicate.</p> <p>The Competent Person considers the current methods and processes described as appropriate for this style of mineralisation.</p>
	<i>Whether sample sizes are appropriate to the grain size of the material being sampled.</i>	<p><u>Historical Information</u></p>

Criteria	JORC Code explanation	Commentary
		<p>The First Hit Project mineralisation and targets within the associated tenements are expected to be coarse grained and nuggety gold. Further exploration will need to consider the grain size of gold and distribution of particles. No previous petrology reports were found, and future work will include petrological studies in the early stage of exploration.</p> <p><u>Historical Underground Face Sampling</u></p> <p>No information is available re sample size. The mineralisation is known to include nuggety visible Au.</p> <p><u>Summary of Current VKA 2021 RC Exploration Drilling and Sampling</u></p> <p>The RC drilling is aiming to detect gold anomalism and the sample sizes are considered appropriate to the grain size of the material being sampled given the style of mineralisation being targeted. Sampling of prospective horizons by panning is also being undertaken.</p> <p>The Competent Person considers the current methods and processes described as appropriate for this style of mineralisation.</p>
Quality of assay data and laboratory tests	<i>The nature, quality and appropriateness of the assaying and laboratory procedures used and whether the technique is considered partial or total.</i>	<p><u>Historical Information</u></p> <p>7,865 samples were prepared for Fire Assay and tested by Kalgoorlie Assay Laboratory. There are incomplete records for the remaining 2,150 samples. Fire Assay is considered a total digest and whilst generally appropriate for the type of mineralisation, cyanide bottle roll leach test work may be recommended for exploration should coarse gold be encountered in future exploration.</p> <p><u>Historical Underground Face Sampling</u></p> <p>No information is available with respect to the quality of the face samples.</p> <p>The analytical techniques to be used for the 2021 RC drilling programme samples include:</p> <p>Fire Assay method (50g charge) for gold, four acid digest with ICP-MS/OES finish for 60 elements, and pXRF method for 34 elements. The analytical technique for Au is considered total with the rest being mostly partial.</p> <p>The Competent Person considers the current methods and processes described as appropriate for this style of mineralisation.</p>
	<i>For geophysical tools, spectrometers, handheld XRF instruments, etc., the parameters used in determining the analysis including instrument make and model, reading times, calibrations factors applied and their derivation, etc.</i>	<p><u>Historical Information</u></p> <p>No non-destructive tools or devices are recorded as being used.</p> <p><u>Summary of VKA 2021 Exploration AC and Diamond Drilling</u></p> <p>A pXRF survey has been completed in the field using a handheld instrument by Bruker, the S1 Titan 800 model. The measurements were completed in three ranges (Exploration Mode) with 20 counts per range. Autocalibration measurements were used for reading checks and adjustments.</p> <p>The Competent Person considers the current methods and processes described as appropriate for this style of mineralisation.</p>
	<i>Nature of quality control procedures adopted (e.g. standards, blanks, duplicates, external laboratory checks) and whether acceptable levels of accuracy (i.e. lack of bias) and precision have been established.</i>	<p><u>Historical Information</u></p> <p>CSA Global has not been able to obtain the original assay certificates for exploration and resource drilling on the First Hit Project tenements.</p> <p>As recorded in the QC procedure section duplicates were used as a way of informing the resource model. For future exploration it is recommended that standard CRMS, blanks and duplicates be used for QAQC.</p> <p><u>Underground Face Sampling</u></p> <p>No information is available with respect to QAQC procedures.</p> <p><u>Summary of Current VKA 2021 RC Exploration Drilling and Sampling</u></p> <p>The QAQC procedures for the RC drilling program consist of the analyses of certified standards, duplicates and blanks all at 4% so QAQC samples consists of 12% of the program.</p> <p>The Competent Person considers the QAQC described as appropriate for this style of mineralisation.</p>
	<i>The verification of significant intersections by either independent or alternative company personnel.</i>	<p><u>Historical Information</u></p>



Criteria	JORC Code explanation	Commentary
Verification of sampling and assaying		<p>Due to the samples being sampled and collected 20 years ago, independent verification is difficult and has not been undertaken. CSA Global recommend unpacking the remaining drill core on site and reviewing the geology, alteration, structure and mineralisation.</p> <p><u>Underground Face Sampling</u> No independent verification has been undertaken so far, however the hardcopy plan data is being entered into a database, which will facilitate checking of assay data presented on the face sampling plans against that recorded in Barmingo and Barra Resources reports.</p> <p><u>Summary of Current VKA 2021 RC Exploration Drilling and Sampling</u> No independent verification of drilling and sampling, however similar protocols are being applied as per previous RC drilling programs The Competent Person considers the process described as appropriate.</p>
	<i>The use of twinned holes.</i>	<p><u>Historical Information</u> No twin drilling has been undertaken; however, significant reported underground development and sampling has verified the information provided by the surface drilling.</p> <p><u>Summary of Current VKA 2021 RC Exploration Drilling and Sampling</u> There are no twinned holes planned in the-Current program- The Competent Person considers the process described as appropriate, though twinning of RC holes with diamond drilling may be appropriate given the visible gold observed in RC samples to avoid potentially overstating the down hole intervals in the RC intervals.</p>
	<i>Documentation of primary data, data entry procedures, data verification, data storage (physical and electronic) protocols.</i>	<p><u>Historical Information</u> The data entry, storage and documentation of primary data was completed in Microsoft Access databases and assembled by CSA Global into a central database for future purposes. The majority of the data reviewed by CSA Global has been summarised from primary sources.</p> <p><u>Underground Face Sampling</u> No independent verification has been undertaken so far, however the hardcopy plan data is being entered into a database, which will facilitate checking of assay data presented on the face sampling plans against that recorded in Barmingo and Barra Resources reports. The face sampling data is presented as a series of Tables in Barra Resources report – ‘Final Mine Report, 2002’ and submitted to DMIRS.</p> <p><u>Summary of Current VKA 2021 RC Exploration Drilling and Sampling</u> Primary data for drill cuttings, including sample number, depth, colour, grain size, weathering, lithology, alteration, rock fabric and the presence of minerals potentially related to mineralisation including quartz and sulphides, were collected in the field and entered into a protected spreadsheet which was then uploaded into relational database. The Competent Person considers the process described as appropriate</p>
	<i>Discuss any adjustment to assay data.</i>	No adjustments or calibrations have been made to any assay data.
Location of data points	<i>Accuracy and quality of surveys used to locate drillholes (collar and downhole surveys), trenches, mine workings and other locations used in Mineral Resource estimation.</i>	<p><u>Historical Information</u> All drill hole collars were surveyed by differential global positioning system (DGPS) or by the mine operations survey equipment. The following extract from the 2001 First Hit Mine Ore Resource and Mining report states the following:</p>



Criteria	JORC Code explanation	Commentary																												
		<p>Down hole surveying of drill holes were undertaken on the majority of holes whilst being drilled. This has enabled only dip readings to be collected as the instrument was used within the drill string. Several programs of downhole surveying using a single shot Eastman camera have been completed for all available holes in the First Hit area and have been incorporated into the database. Where downhole surveys were unavailable due to the collapse of the hole, survey estimates at regular intervals have been applied. These are based on the deviation of the surrounding drill holes. Drill holes greater than 100 m in depth deviated consistently in the azimuth to the southwest (against rotation). The dip angle in most cases steepened and in some of the deeper holes this was quite dramatic. Drill string stabilizers were tried at various times in an attempt to help alleviate this problem, but no consistent results were achieved.</p> <p><u>Historical Underground Face Sampling</u> The location of face sampled was recorded by mine surveyors. The face samples were used to guide mine development. It is unknown the extent the face sample data was used in Mineral Resource estimates.</p> <p><u>Summary of Current VKA 2021 RC Exploration Drilling and Sampling– Surveys</u> The collar positions have been surveyed using a differential GPS with an accuracy of +/-0.5m once drilling of the planned programme was completed. The downhole azimuth and dip were surveyed using a Reflex Easy Gyro tool or an Axis Mining Technology Champ Gyro tool with an accuracy of +/- 1 degree for the azimuth and +/-0.1 degrees for the dip. The Competent Person considers the survey processes as appropriate</p>																												
	<i>Specification of the grid system used.</i>	<p><u>Historical Information</u> Topographic data for the mine drilling were captured in MGA Zone 51 grid. A local grid has been established at First Hit, which is orthogonal to the known mineralised trend of the area (020 degrees). The grid orientation is at 290 degrees magnetic which is optimal for this deposit. The conversion from local to AMG 84 grid is presented in the table below.</p> <table><tr><td></td><td>Local</td><td></td><td></td><td>AMG 84</td><td></td><td></td></tr><tr><td></td><td>Northing</td><td>Easting</td><td>RI</td><td>Northing</td><td>Easting</td><td>RI</td></tr><tr><td>Point1 (BFH008)</td><td>40020</td><td>10000</td><td>448.991</td><td>6714690.694</td><td>265409.570</td><td>448.991</td></tr><tr><td>Point2 (BFH010)</td><td>40201.7</td><td>10000</td><td>442.716</td><td>6714861.448</td><td>265471.014</td><td>442.716</td></tr></table> <p><u>Summary of Current VKA 2021 Grid datum</u> The GDA94 Zone 51 datum is used as the coordinate system.</p>		Local			AMG 84				Northing	Easting	RI	Northing	Easting	RI	Point1 (BFH008)	40020	10000	448.991	6714690.694	265409.570	448.991	Point2 (BFH010)	40201.7	10000	442.716	6714861.448	265471.014	442.716
		Local			AMG 84																									
	Northing	Easting	RI	Northing	Easting	RI																								
Point1 (BFH008)	40020	10000	448.991	6714690.694	265409.570	448.991																								
Point2 (BFH010)	40201.7	10000	442.716	6714861.448	265471.014	442.716																								
<i>Quality and adequacy of topographic control.</i>	<p><u>Historical topographic Information</u> Historical survey work for the First Hit Mine was conducted via differential global positioning system (DGPS) and is appropriate as an industry standard method. A topographic surface used for coding the block model was built from a system using a detailed drone survey. The Competent Person considers that the surface is suitable for future exploration activities.</p> <p><u>Summary of Current VKA 2021 RC Exploration Drilling and Sampling</u> The DTM and collar locations for the RC drilling were located by differential GPS. The Competent Person considers the processes for diamond collar and aircore collar locations as appropriate.</p>																													
Data spacing and distribution	<i>Data spacing for reporting of Exploration Results.</i>	<p><u>Historical Information</u> The majority of the data on the tenements is surface geochemistry which are adequate for defining anomalies for future exploration.</p> <p><u>Summary of Current VKA 2021 RC Exploration Drilling and Sampling</u> RC drilling was undertaken on an irregular 40x40m, or 80x40m or 120x40m spacing to test specific targets and extensions of mineralisation identified in historical drill holes.</p>																												



Criteria	JORC Code explanation	Commentary
		The Competent Person considers the data spacing appropriate for reporting exploration results.
	<i>Whether the data spacing and distribution is sufficient to establish the degree of geological and grade continuity appropriate for the Mineral Resource and Ore Reserve estimation procedure(s) and classifications applied.</i>	<u>Historical Information</u> Existing drilling on the periphery of historically mined areas is suitable for defining additional drill targets laterally, down dip and in the near surface environment. <u>Summary of Current VKA 2021 RC Exploration Drilling and Sampling</u> The spacing of the RC drilling is considered appropriate for this type of deposit and no resources are currently being estimated.
	<i>Whether sample compositing has been applied.</i>	<u>Historical Information</u> Sample compositing was applied in initial exploration drilling at the First Hit Project and always followed up by detailed sampling at 1 m interval, or less for core drilling. <u>Summary of Current VKA 2021 RC Exploration Drilling and Sampling</u> No sample compositing has been applied for RC drill samples. The Competent Person considers the sampling to be appropriate for this stage of exploration.
Orientation of data in relation to geological structure	<i>Whether the orientation of sampling achieves unbiased sampling of possible structures and the extent to which this is known, considering the deposit type.</i>	<u>Historical Information</u> The regular spaced drilling on consistent sections, and the orientations orthogonal to the strike of the lodes, has provided consistent support to intersections of mineralisation to eliminate any bias or influence of hole angles on grades. <u>Summary of Current VKA 2021 RC Exploration Drilling and Sampling</u> RC drilling is predominately orthogonal to the strike of the structural trends and mineral system. Understanding the geometry of the mineralised trends is managed through incorporating as much of the underground mapping and historical drilling as possible as well as regional data sets. Additionally, all RC holes are oriented to understand and measure the variability of structures and mineralisation. The Competent Person considers the processes for as appropriate.
	<i>If the relationship between the drilling orientation and the orientation of key mineralised structures is considered to have introduced a sampling bias, this should be assessed and reported if material.</i>	<u>Historical Information</u> No relationship has been noted between drillhole orientation and mineralisation. <u>Summary of Current VKA 2021 RC Exploration Drilling and Sampling</u> At this stage of exploration, RC drilling is considered by the Competent Person not to have introduced a sampling bias. However, as drilling continues, this will need to be reviewed as coarse gold has been observed in core and RC drilling which may require further review.
Sample security	<i>The measures taken to ensure sample security.</i>	<u>Historical Information</u> The competent person is unaware of measures taken to ensure sample security during past exploration. Chain of custody procedures are recommended for future exploration. <u>Summary of Current VKA 2021 RC Exploration Drilling and Sampling</u> Samples derived from the RC drilling were collected and stored by site personnel at a designated lay-down area on site. These samples were transported to Intertek laboratories in Kalgoorlie by site personnel or Pitbull transport. The Competent Person considers the processes for sample security as appropriate.
Audits or reviews	<i>The results of any audits or reviews of sampling techniques and data.</i>	<u>Historical Information</u> No external audit of sampling techniques and data could be sourced from the documents provided to CSA Global. <u>Summary of Current VKA 2021 RC Exploration Drilling and Sampling</u> No external audits or reviews have yet been undertaken on the sampling data however the competent person is satisfied with the processes employed. The analytical data have yet to be received.



JORC 2012 Table 1 Section 2 – Reporting of Exploration Results

Criteria	JORC Code explanation	Commentary																																	
Mineral tenement and land tenure status	Type, reference name/number, location and ownership including agreements or material issues with third parties such as joint ventures, partnerships, overriding royalties, native title interests, historical sites, wilderness or national park and environmental settings.	<u>Tenements and location</u> The First Hit Project tenements are located approximately 50 km due west of the town of Menzies, Western Australia on the Menzies (05) 1:250,000 and Riverina 3038 1:100,000 topographic map sheets, and include: <table><thead><tr><th>Tenement</th><th>Status</th><th>Holder</th></tr></thead><tbody><tr><td>M30/0091</td><td>LIVE</td><td>Red Dirt Mining Pty Ltd</td></tr><tr><td>M30/0099</td><td>LIVE</td><td>Red Dirt Mining Pty Ltd</td></tr><tr><td>P30/1125</td><td>LIVE</td><td>Red Dirt Mining Pty Ltd</td></tr><tr><td>P30/1126</td><td>Live – undergoing transfer to Viking</td><td>Australia Menzies Emeralds Pty Ltd</td></tr><tr><td>P30/1137</td><td>LIVE</td><td>Red Dirt Mining Pty Ltd</td></tr><tr><td>P30/1144</td><td>LIVE</td><td>Red Dirt Mining Pty Ltd</td></tr><tr><td>E29/1131</td><td>PENDING</td><td>Viking Mines Ltd</td></tr><tr><td>E29/1133</td><td>PENDING</td><td>Viking Mines Ltd</td></tr><tr><td>E30/0529</td><td>PENDING</td><td>Viking Mines Ltd</td></tr><tr><td>P29/2652</td><td>PENDING</td><td>Viking Mines Ltd</td></tr></tbody></table>	Tenement	Status	Holder	M30/0091	LIVE	Red Dirt Mining Pty Ltd	M30/0099	LIVE	Red Dirt Mining Pty Ltd	P30/1125	LIVE	Red Dirt Mining Pty Ltd	P30/1126	Live – undergoing transfer to Viking	Australia Menzies Emeralds Pty Ltd	P30/1137	LIVE	Red Dirt Mining Pty Ltd	P30/1144	LIVE	Red Dirt Mining Pty Ltd	E29/1131	PENDING	Viking Mines Ltd	E29/1133	PENDING	Viking Mines Ltd	E30/0529	PENDING	Viking Mines Ltd	P29/2652	PENDING	Viking Mines Ltd
		Tenement	Status	Holder																															
M30/0091	LIVE	Red Dirt Mining Pty Ltd																																	
M30/0099	LIVE	Red Dirt Mining Pty Ltd																																	
P30/1125	LIVE	Red Dirt Mining Pty Ltd																																	
P30/1126	Live – undergoing transfer to Viking	Australia Menzies Emeralds Pty Ltd																																	
P30/1137	LIVE	Red Dirt Mining Pty Ltd																																	
P30/1144	LIVE	Red Dirt Mining Pty Ltd																																	
E29/1131	PENDING	Viking Mines Ltd																																	
E29/1133	PENDING	Viking Mines Ltd																																	
E30/0529	PENDING	Viking Mines Ltd																																	
P29/2652	PENDING	Viking Mines Ltd																																	
	<u>Third Party Interests</u> The nickel rights to M30/99 & M30/91 are held by Riverina Resources Limited and Barra Resources Limited. P30/1126 is subject to a 1% Net Smelter Royalty with Australia Emerald Menzies Pty Ltd on any gold produced from the tenement. Red Dirt Mining are not aware of any material 3rd party interests or royalties. <u>Native Title, Historical sites and Wilderness</u> Archaeological and ethnographic studies were undertaken for M30/99 prior to further development in 2001. These studies involved an examination of the existing ethnographic data base pertaining to the mining area and an examination of known ethnographic site distribution. The studies concluded that it was unlikely that the developments will impact any sites of Aboriginal significance. This information was submitted to the Department of Aboriginal Affairs. A recent search of the Department of Aboriginal Affairs (DAA) Heritage Inquiry System indicates there are no registered Aboriginal Heritage Sites identified within any tenement covered under this MCP (DAA 2019). The mining lease was granted prior to the Native Title Act being enforced.																																		
	The security of the tenure held at the time of reporting along with any known impediments to obtaining a licence to operate in the area.	The tenements are held in good standing by Red Dirt Mining Pty Ltd. a wholly owned subsidiary of Viking Mines Ltd.																																	



Criteria	JORC Code explanation	Commentary
Exploration done by other parties	<i>Acknowledgment and appraisal of exploration by other parties.</i>	<p>The Red Dirt tenements have been actively explored and mined since 1886 with the arrival of prospecting parties during the initial Western Australia gold rush. Arthur and Tom Evans founded the First Hit gold mine in 1938.</p> <p>Tom and Arthur worked the mine until Tom sold his share to Riverina station owner Bill Skathorpe in late 1953. Arthur and Bill worked the mine until Bill's death in 1954. George Vujcich Senior bought the mine from Arthur and Bill's estate in late 1955. George and then his son George operated the mine intermittently over a 40-year period. Barminco purchased the First Hit tenement from George's daughter in late 1996.</p> <p>Regional exploration activities were undertaken by Western Mining Corporation (WMC) and Consolidated Gold Operations prior to 1996 including geochemical sampling, lag sampling and auger programs. The programs covered the various regolith features with a purpose of defining broad geochemical anomalies.</p> <p>From 1996 to 2002 exploration and development was undertaken by Barra Resources or Barminco.</p> <p>Barminco Pty Ltd undertook geochemical soil geochemistry on the northern part of M30/99 between 1995 and 2000. Various combinations of multielement geochemistry were completed historically, ranging from gold-only assays to 42 element geochemistry.</p> <p>The following extract from the Barra Resources mine closure and production report provides an insight to the exploration and discovery of the First Hit deposit:</p> <p><i>"Barminco Pty Ltd acquired the First Hit tenement in August 1996, with the objective of exploring for and developing moderate sized high grade gold deposits. Because of Barminco's mining and exploration activities at Two Boys, Karonie, Jenny Wren, Gordon Sirdar and Bacchus Gift mines the period between August 1996 and June 2000 saw only intermittent work at First Hit. Twenty RC drill holes were completed demonstrating the potential for high-grade underground resources.</i></p> <p><i>The First Hit deposit was effectively discovered in June 2000 with drill hole BFH 025 which returned 3 zones of mineralisation including 5m @ 60 g/t, 7m @ 9.0 g/t and 2m @ 3.7 g/t".</i></p> <p>Barra Resources subsequently completed a 20 m x 25 m drill out to 240 m in depth, combined with a detailed feasibility study, culminating in the commencement of mining operations in August 2001.</p> <p>Barra Resources also completed RC drill programs at three prospects within the First Hit Project leases, referred to as First Hit North, First Hit South and Clarkes Well. Minor gold mineralisation was intersected in a small number of holes, but no further exploration was completed.</p> <p>The leases have since been owned by several companies and private operators without much additional exploration.</p>
Geology	<i>Deposit type, geological setting and style of mineralisation</i>	<p><u>Regional Geology</u></p> <p>The area of interest lies on the 1:100,000 Riverina geological sheet 3038 (Wyche, 1999). The Mt Ida greenstone belt is a north-striking belt of predominantly metamorphosed (upper greenschist-amphibolite facies) mafic and ultramafic rocks that form the western boundary of the Eastern Goldfields geological terrane. The major structure in this belt is the Mt Ida Fault, a deep mantle tapping crustal suture that trends N-S and dips to the east. It marks the western boundary of the Kalgoorlie Terrane (~2.7 Ga) of the Eastern Goldfields Province against the Barlee Terrane (~3.0 Ga) of the Southern Cross Province to the west. To the east the belt is bounded by the Ballard Fault, a continuation of the strike extensive Zuleika Shear.</p> <p>The Mt Ida belt is widely mineralised, predominantly with discordant vein gold deposits. Associated element anomalism typically includes copper and arsenic but neither have been identified in economic concentrations. There is some nickel sulphide mineralisation associated with the komatiite component of the supracrustal rocks and the area includes a locally significant beryl deposit sporadically mined for emeralds. In the Riverina area the outcrop position of the Ida Fault is equivocal, and it is best regarded as a corridor of related structures with an axis central to the belt.</p> <p>The Riverina and First Hit Project area dominantly comprises metabasalts and metadolerites of tholeiitic parentage with lesser metagabbros and komatiites. Small post-tectonic granitoids intrude the sequence with locally higher-grade metamorphic conditions.</p>



Criteria	JORC Code explanation	Commentary
		<p>Structurally, the dominant features are north-striking, east-dipping reverse faults and associated anastomosing strain zones. A conjugate set of late brittle structures striking NE and NW is also evident.</p> <p>The mineralisation exploited to date has typically been narrow mesothermal anastomosing veins. These frequently have strike and dip dimensions able to sustain small high-grade mining operations.</p> <p>Local Geology</p> <p>The local geology of the First Hit Project area comprises north striking ultramafics, komatiites and peridotites with some sediments in the eastern part of the block. To the west there is a metabasalt unit including a prominent gabbro and further west again more peridotite with amphibolite. The general strike trend drifts to the north-northwest then back to north. The sequence includes a small felsic intrusive west of the Emerald workings and a zone of felsic schists within the eastern ultramafics. Felsic intrusives occur in the northwest corner. The local strike fabric trends north then north-northeast.</p> <p>The First Hit mineralisation occurs as a quartz lode varying to 4 m in thickness dipping at 70° to the east. The lode is hosted in biotite-carbonate schist within metabasalt and plunges to the south at around 50°. Numerous shafts, prospecting pits and costeans exist on the tenements and recorded production for the First Hit and First Hit North areas in the period 1930-1974 was ~7478 oz Au from 6091 tonnes mined. The First Hit North workings are 130 m further to the north-northeast.</p> <p>References</p> <p>Wyche, S.1(1995). Geology of the Mulline and Riverina 1:100,000 Sheets. Geological Survey of Western Australia</p> <p>Grey, A.R (2002) Annual Technical Reporting, 1 July 2000 to 30 June 2001, E30/193, M30/99, M30/118, P30/869, P30/894, Riverina 1:100,000 Sheet 3038 Barra Resources Limited</p>
Drill hole Information	<p><i>A summary of all information material to the understanding of the exploration results including a tabulation of the following information for all Material drill holes:</i></p> <ul style="list-style-type: none">• easting and northing of the drill hole collar• elevation or RL (Reduced Level - elevation above sea level in metres) of the drill hole collar• dip and azimuth of the hole• down hole length and interception depth• hole length. <p><i>If the exclusion of this information is justified on the basis that the information is not Material and this exclusion does not detract from the understanding of the report, the Competent Person should clearly explain why this is the case.</i></p>	<p>A summary of the relevant drillhole information has been included in the body of the report.</p>
Data aggregation methods	<p><i>In reporting Exploration Results, weighting averaging techniques, maximum and/or minimum grade truncations (e.g., cutting of high grades) and cut-off grades are usually Material and should be stated. Where aggregate intercepts incorporate short lengths of high-grade results and longer lengths of low grade results, the procedure used for such aggregation should be stated and some typical examples of such aggregations should be shown in detail.</i></p> <p><i>The assumptions used for any reporting of metal equivalent values should be clearly stated.</i></p>	<p>Significant assay results or aggregated intercept reporting have been completed using a minimum cut-off grade of 0.5g/t. No high grade cut-off has been used.</p>



Criteria	JORC Code explanation	Commentary
<i>Relationship between mineralisation widths and intercept lengths</i>	<ul style="list-style-type: none">• These relationships are particularly important in the reporting of Exploration Results.• If the geometry of the mineralisation with respect to the drill hole angle is known, its nature should be reported.• If it is not known and only the down hole lengths are reported, there should be a clear statement to this effect (eg 'down hole length, true width not known').	The drilling programs at the First Hit deposit reported herein are variably oblique to the true width of the deposit. All drill holes are reported as down hole widths as the true width cannot be determined.
<i>Diagrams</i>	<i>Appropriate maps and sections (with scales) and tabulations of intercepts should be included for any significant discovery being reported. These should include, but not be limited to a plan view of drill hole collar locations and appropriate sectional views.</i>	All appropriate maps and plans are included in the body of the report.
<i>Balanced reporting</i>	<i>Where comprehensive reporting of all Exploration Results is not practicable, representative reporting of both low and high grades and/or widths should be practiced to avoid misleading reporting of Exploration Results.</i>	All appropriate information is included in the report.
<i>Other substantive exploration data</i>	<i>Other exploration data, if meaningful and material, should be reported including (but not limited to): geological observations; geophysical survey results; geochemical survey results; bulk samples – size and method of treatment; metallurgical test results; bulk density, groundwater, geotechnical and rock characteristics; potential deleterious or contaminating substances.</i>	<p>Geophysical data used at the First hit project includes: Magnetic data: Viking Mines purchased historic magnetic geophysical data from Southern Geoscience Consultants Pty Ltd from the multi-client data source. The data purchased is recorded as the Riverina (R#60371) survey and was completed by Barminco. 1,432 line km of data was purchased by Viking mines. The survey acquisition details are recorded as: Line spacing 25m, Line direction 090-270, Tie line spacing 250m, Tie line direction 180-000, Aircraft survey height 25m, Survey flown February 1999</p> <p>Equipment specifications: Aircraft type Fletcher FU24-950, Survey navigation UTS Nav System V3.0, Data acquisition UTS ACQSYS V3.2, Data positioning Real time differential GPS, GPS type Novatel 951R, 12 channel, Magnetometer Scintrex Cesium Vapour Model CS2, Compensation RMS AADC II, Resolution 0.001nT, Recording interval 0.1 sec or 4-5m, Sensor height 25 m, Radar altimeter King model KRA-405, Recording interval 0.1 sec or 4-5m, Base station magnetometer Scintrex ENVI-MAG, Recording interval 5.0 sec</p> <p>Gravity data: The acquisition and processing of 674 new gravity stations commenced on the 26th of January 2021 and finished on the 30th of January 2021. Final data were delivered shortly after project completion. All data was acquired for Viking Mines Limited over the First hit project area located approximately 46km west of Menzies in the Gold Fields region of Western Australia. Gravity stations were acquired using a 200m x 50m regular grid configuration by Atlas using one crew utilising foot-borne gravity methods. The following instrumentation was used for acquisition of the gravity data:</p> <ul style="list-style-type: none">▪ One CG-5 Autograv Gravity Meter (Serial Number: 41081, SF: 1.000000), One CHC i70+ GNSS Rover Receiver, One CHCi70+ GNSS Base Receiver
<i>Further work</i>	<i>The nature and scale of planned further work (eg tests for lateral extensions or depth extensions or large-scale step-out drilling). Diagrams clearly highlighting the areas of possible extensions, including the main geological interpretations and future drilling areas, provided this information is not commercially sensitive.</i>	<p>3D modelling of the regional geology and structure at the tenement scale is in progress.</p> <p>The evaluation of all geochemical data is being evaluated to design additional exploration activities on the exploration tenements which may include geochemistry, RC and diamond drilling.</p>



Criteria	JORC Code explanation	Commentary
		<p>Further assessment of RC samples received is required, including additional testwork on the remaining samples to determine the variability due to the relatively coarse nature of the gold seen in the RC chips. Additional assaying will be completed on the samples to see if there is a significant nugget effect.</p> <p>Execution of the 2021 RC drill programme consisting of 72 holes for 6,723m has been completed, however results are still being obtained and interpreted.</p> <p>This drill programme involved testing around step out hole VDD016 to test for new shoot potential, including additional systematic step out traverses to the north along the First Hit structural trend Programme design to test the depth extensions of the First Hit mineralisation. Three other target areas were also tested including First Hit South, Twin Peaks, and Jana's Reward.</p> <p>In addition, assessment of the effectiveness of historical RC drilling in light of recent observation on poor sampling practices (4m composites) for narrow vein high-grade gold targets will commence and be tested through the completion of the 2021 RC drilling programme.</p> <p>Incorporation of assay data into a regional structural model to define new targets for follow up and to provide support for the 4 target areas identified from the Air-Core programme.</p>