



**ABN 39 151 900 855**

Registered Office:  
Ground Floor, BGC Centre  
28 The Esplanade  
Perth WA 6000

W: [www.javelinminerals.com.au](http://www.javelinminerals.com.au)  
E: [contact@javelinminerals.com.au](mailto:contact@javelinminerals.com.au)

## **MT IDA-IDA VALLEY AEROMAGNETIC SURVEY COMPLETED**

- **900 square kilometres of wholly owned Company Exploration Licences and Applications now fully covered by a low level aeromagnetic and radiometric survey.**
- **Company now ready to commence exploration activities for precious metals, copper, nickel and lithium following the confirmed prospectivity of the region by adjacent explorers Red Dirt Metals Limited and St George Mining Limited.**

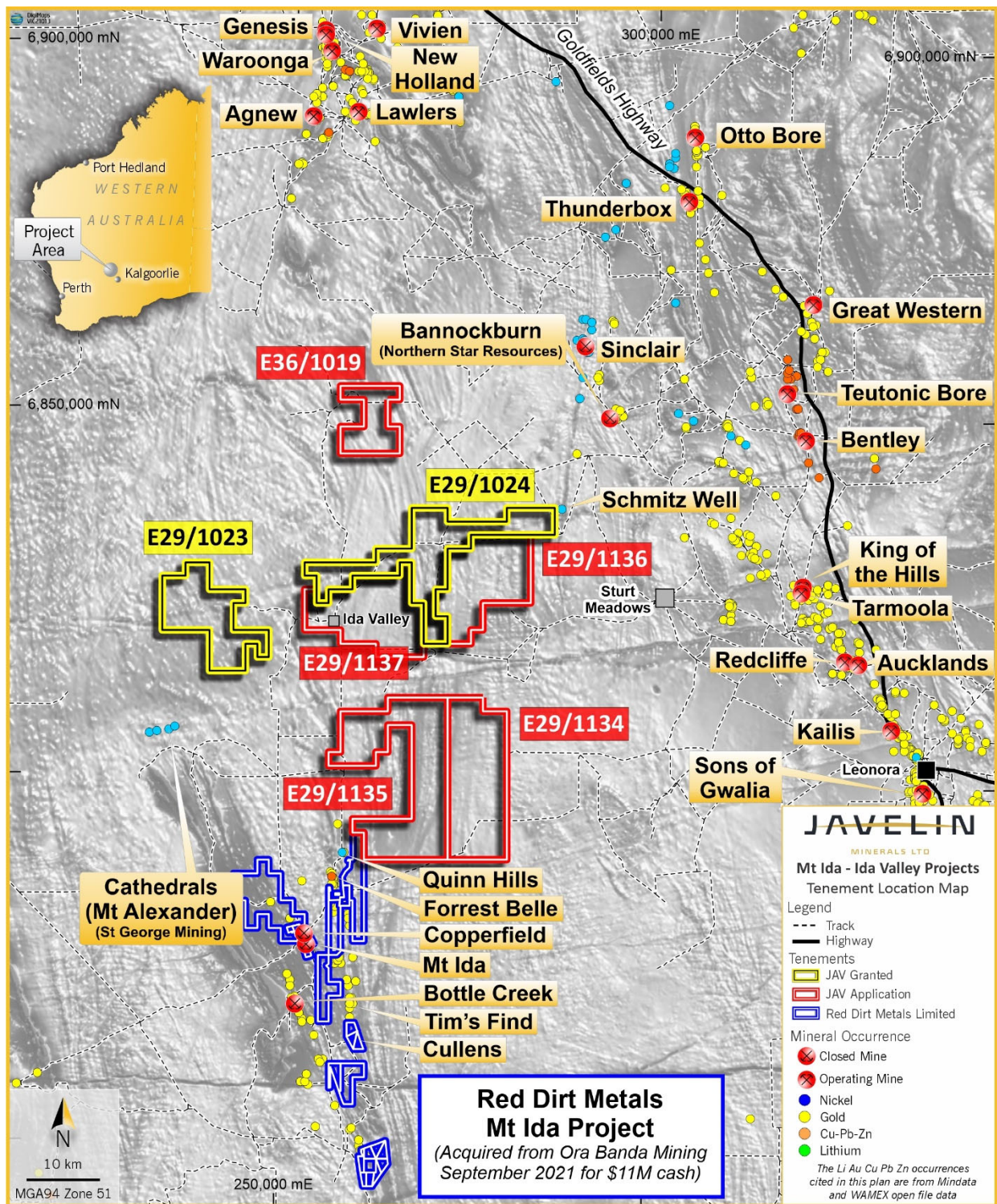
Javelin Minerals Limited ("Javelin" or "the Company") is pleased to confirm that a low-level aeromagnetic and radiometric survey covering its two granted Exploration Licences and five Exploration Licence applications has been completed.

The aeromagnetic survey covers likely northward auriferous extensions of the Mt Ida Goldfield, including a portion of the significant Zuleica Shear Zone known for its association with gold occurrences to the south.

In addition, the aeromagnetic survey will also provide information on the locations of previously untested lithium-tantalum-rich pegmatitic intrusions as well as discrete mafic and ultramafic intrusives with potential to host base and platinum group metals discoveries over the area of the Company's tenements (Figure 1).

The aeromagnetic survey, which was conducted on behalf of Javelin by Thomson Aviation took one month to complete. Flight line spacings were 50 metres with a survey sensor height of 35-45 metres above ground level and a total of approximately 21,000 flight line kilometres completed.

Southern Geoscience Consultants of Perth, Western Australia will process the flight data and provide the Company with commentary on the results.



**FIGURE 1. LOCATION MAP MT IDA-IDA VALLEY PROJECT**

Upon the successful granting of the new EL Applications, the Company will have approximately 900 square kilometres of highly prospective ground for precious metals, base metals and lithium, recently the focus of accelerated regional exploration activity by Red Dirt Metals Limited (ASX: RDT) and St George Mining Limited (ASX: SGQ).

Javelin Mineral's Executive Director Mr Matthew Blake commented "The completion of the AMAG survey now allows us to start the processing of the geophysical data and field work will commence soon afterwards."

*This ASX announcement is authorised for market release by the Board of Javelin Minerals Limited.*

**For more information:**

Please visit our website for more information: [www.javelinminerals.com.au](http://www.javelinminerals.com.au)

Or

Contact Matthew Blake, Executive Director: +61 419 944 396

**COMPETENT PERSON**

The information in this report is based on information compiled by Mr Rob Mosig who is a Fellow of the Australasian Institute of Mining and Metallurgy (F.AusIMM). Mr Mosig has sufficient experience which is relevant to the style of mineralisation and type of deposit under consideration and to the activity which he is undertaking to qualify as a Competent Person as defined in the 2012 Edition of the 'Australasian Code for Reporting of Exploration Results, Mineral Resources and Ore Reserves'. Mr Mosig consents to the inclusion in the report of the matters based on his information in the form and context in which it appears.