



Growing a Nickel Province

RIU Conference
15-17 February 2022

ASX: LEG

This is not a disclosure document. Any material used in this presentation is a summary of selected data, and any investor in Legend Mining Limited should refer to all Legend Mining Limited ASX releases and statutory reports before considering to invest in the company.

Any forward-looking information in this presentation has been prepared on the basis of a number of assumptions that may prove not to be correct. Neither Legend Mining Limited, nor its officers, employees and advisors make or give any representation, warranty or guarantee in relation to this presentation.

Legend Mining Limited reserves the right to update, amend or supplement the Information in this presentation at any time in its absolute discretion without incurring any obligation to do so.

The information in this presentation that relates to Exploration Results is based on information compiled by Mr Oliver Kiddie, a Member of the Australasian Institute of Mining and Metallurgy and a full-time employee of Legend Mining Limited.

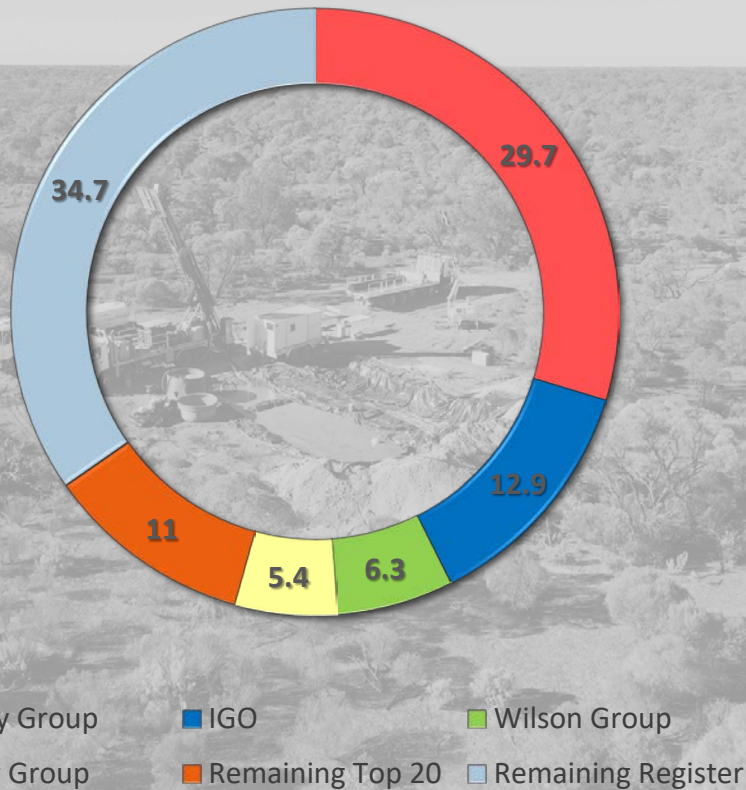
Mr Kiddie has sufficient experience that is relevant to the styles of mineralisation and types of deposit under consideration, and to the activity being undertaken, to qualify as a Competent Person as defined in the 2012 Edition of the "Australasian Code for Reporting of Exploration Results, Mineral Resources and Ore Reserves" (JORC Code).

Mr Kiddie consents to the inclusion in the presentation of the matters based on his information in the form and context in which it appears.

Important Notice

This Presentation does not constitute an offer to acquire or sell or a solicitation of an offer to sell or purchase any securities in any jurisdiction. In particular, this Presentation does not constitute an offer, solicitation or sale to any U.S. person or in the United States or any state or jurisdiction in which such an offer, tender offer, solicitation or sale would be unlawful. The securities referred to herein have not been and will not be registered under the United States Securities Act of 1933, as amended (the "Securities Act"), and neither such securities nor any interest or participation therein may not be offered, or sold, pledged or otherwise transferred, directly or indirectly, in the United States or to any U.S. person absent registration or an available exemption from, or a transaction not subject to, registration under the United States Securities Act of 1933.

Top Shareholders



Market Capitalisation

~\$200M (@ 7.2cps)

Cash
\$18.8M*

Options

149M@7.2c 7-9/2022

Debt
Nil

Directors & Executive Management

Board of Directors

Michael Atkins (*Chairman*)
Mark Wilson (*Managing Director*)
Oliver Kiddie (*Executive Director*)
Tony Walsh (*Company Secretary*)

Key Management

Lyn Anderson (*Office Manager*)
Derek Waterfield (*GM Exploration*)

*As at 31 Dec 2021, Includes Jindal receivable of \$0.5M

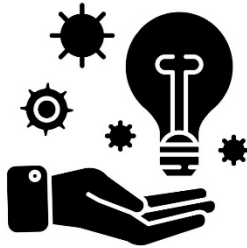


Legend Mining prides itself on continuing, developing, and maintaining excellent Stakeholder Relationships

Reflected in our ESG Policies found at:
www.legendmining.com.au



L



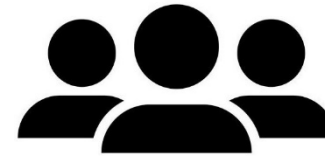
E



G



E



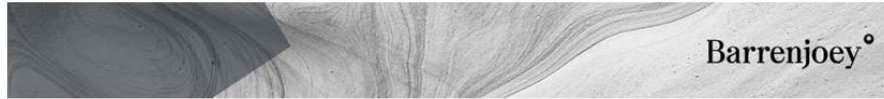
N



D

Location – Experience – Growth – Enabled – Nickel - Deliver

NICKEL – ‘THE FUTURE-FACING COMMODITY’

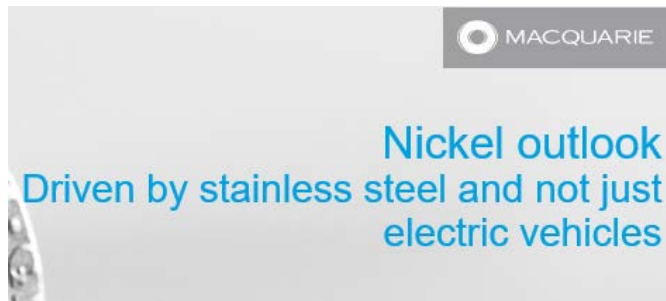


Shortages driving perception and pricing

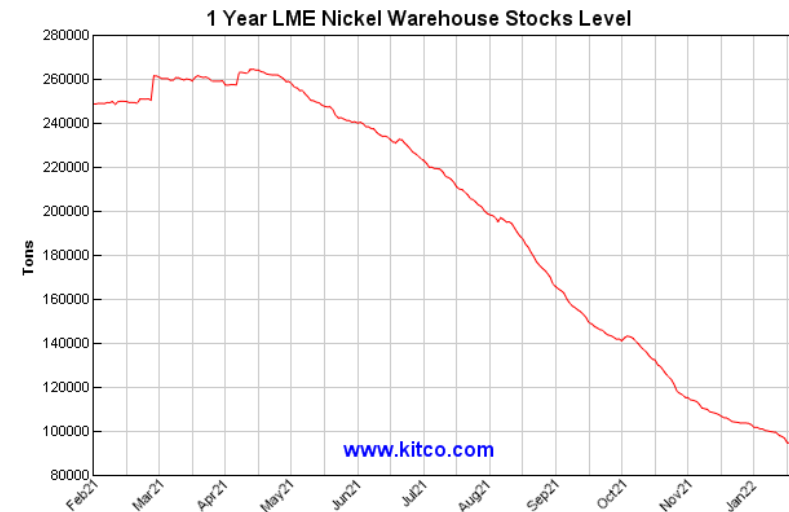
Metals & Mining | Update

Supply squeeze pushes nickel up 5% to 11-year high

Reuters



Dryblower on the perfect storm blowing nickel to a record US\$50,000/t



*Sources: Kitco, Mining News, Barrenjoey, Macquarie, Reuters, November 2021 - January 2022

ROCKFORD PROJECT LOCATION

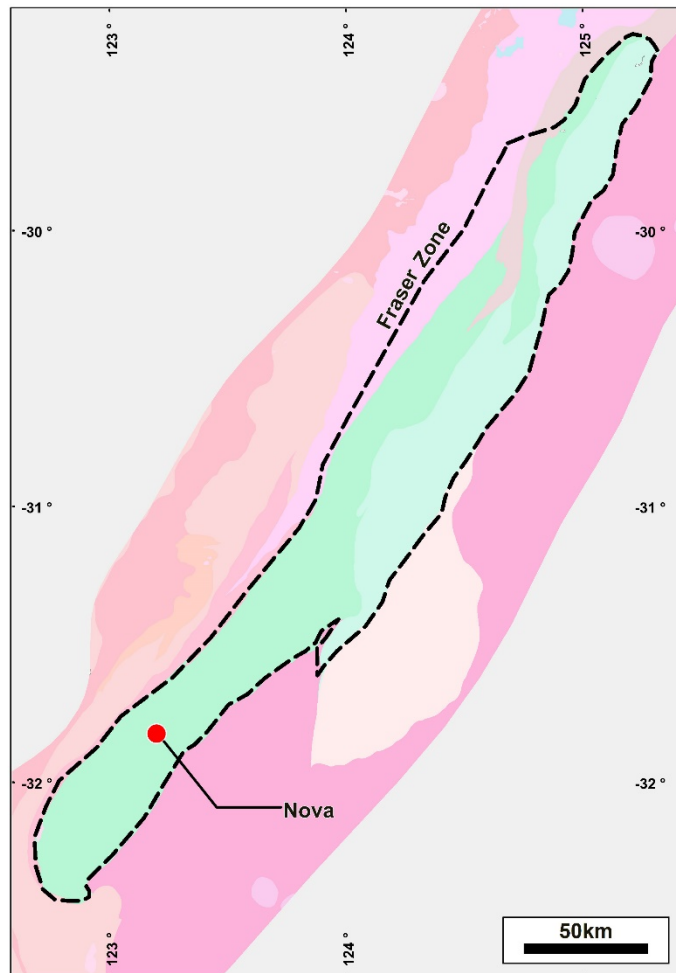
- Fraser Range, Western Australia
- 120km NE of Nova / 100km S of Tropicana
- 100% within Fraser Zone
- Primary Exploration Target
Magmatic Ni-Cu-Co
- Outstanding Existing Infrastructure
 - Transport and Power
 - Communications



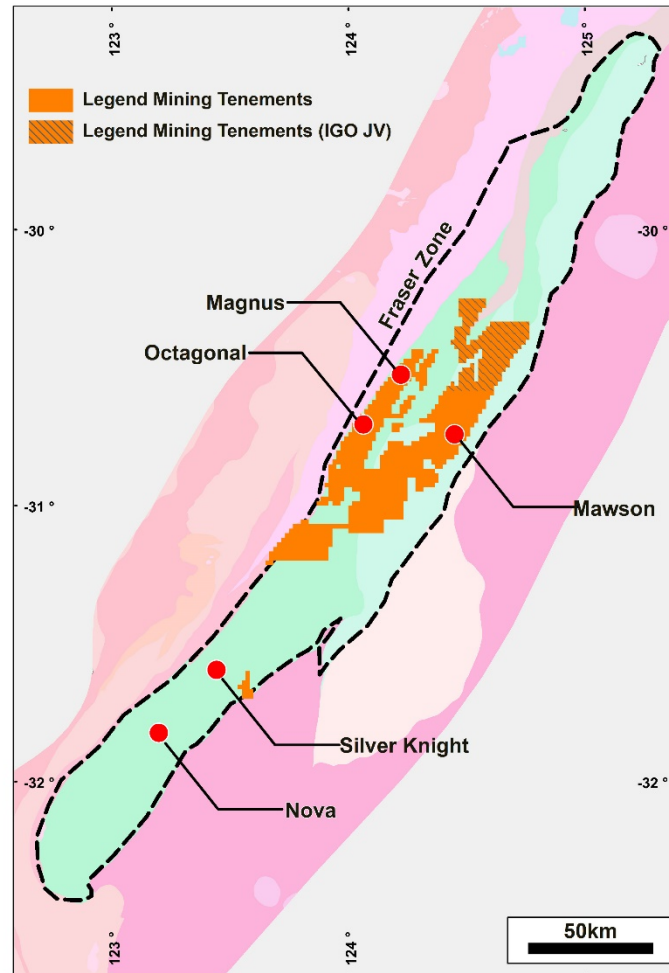
'Excellent infrastructure – 300km east of Kalgoorlie'

THE ALBANY FRASER – AN EMERGING NICKEL BELT

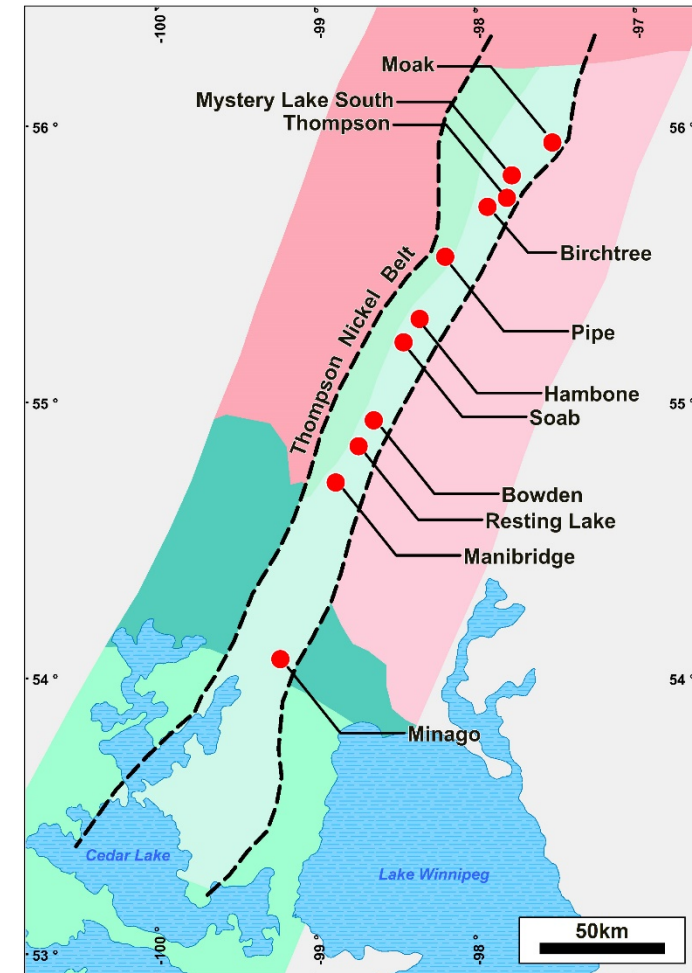
Fraser Range (2012)



Fraser Range (2022)

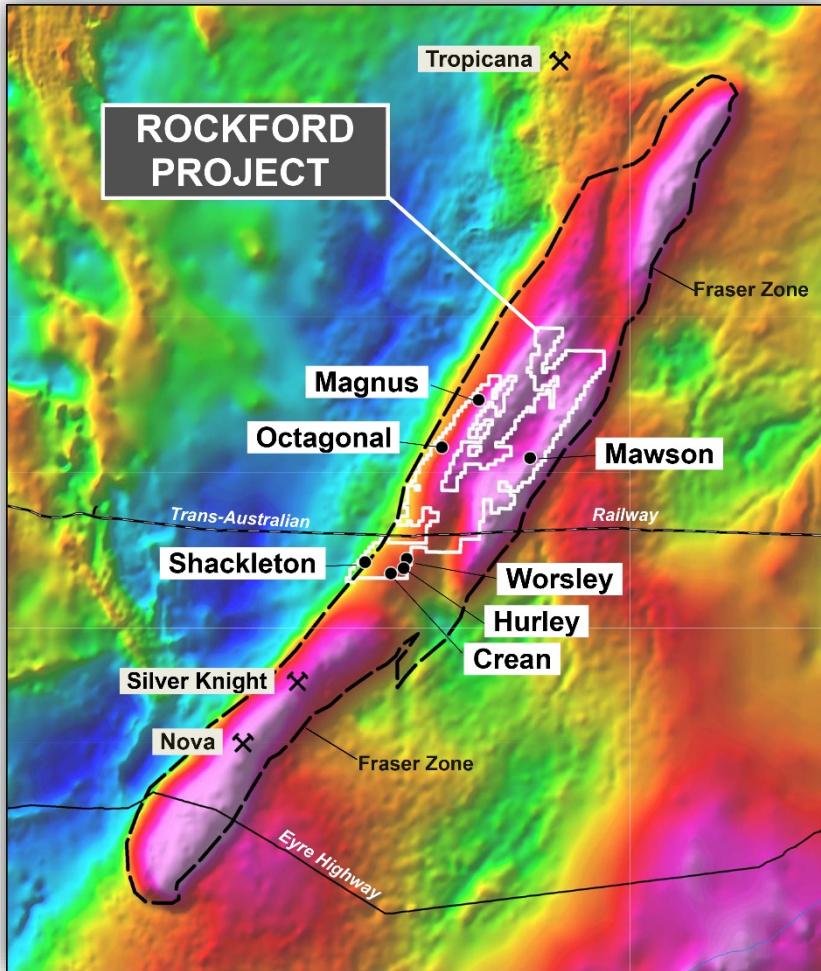


Thompson Belt

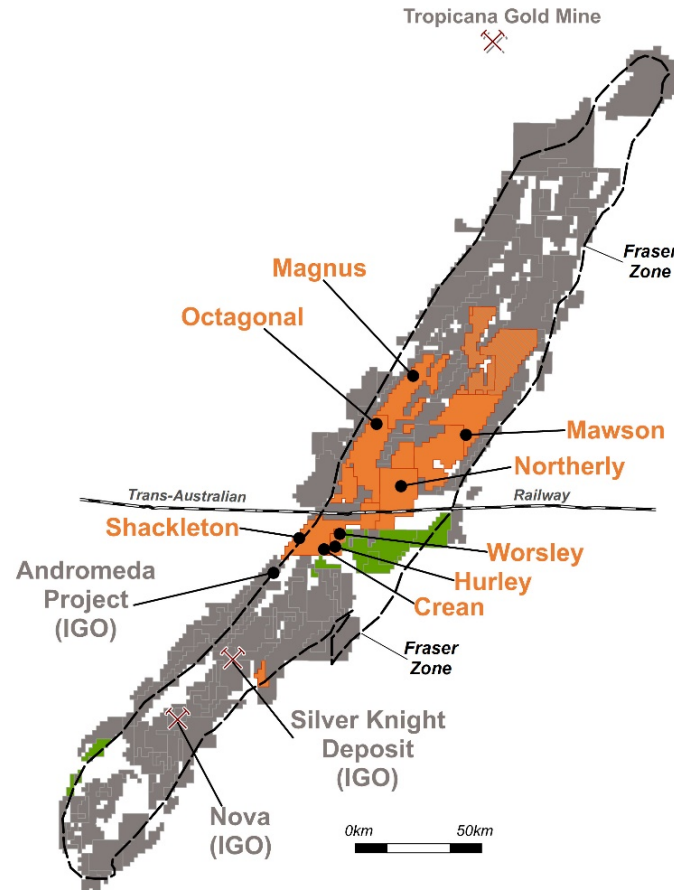


'The Fraser Range is a compelling, potential world class Nickel Belt'

FRASER RANGE – MAIN PLAYERS



FRASER ZONE - MAIN PLAYERS



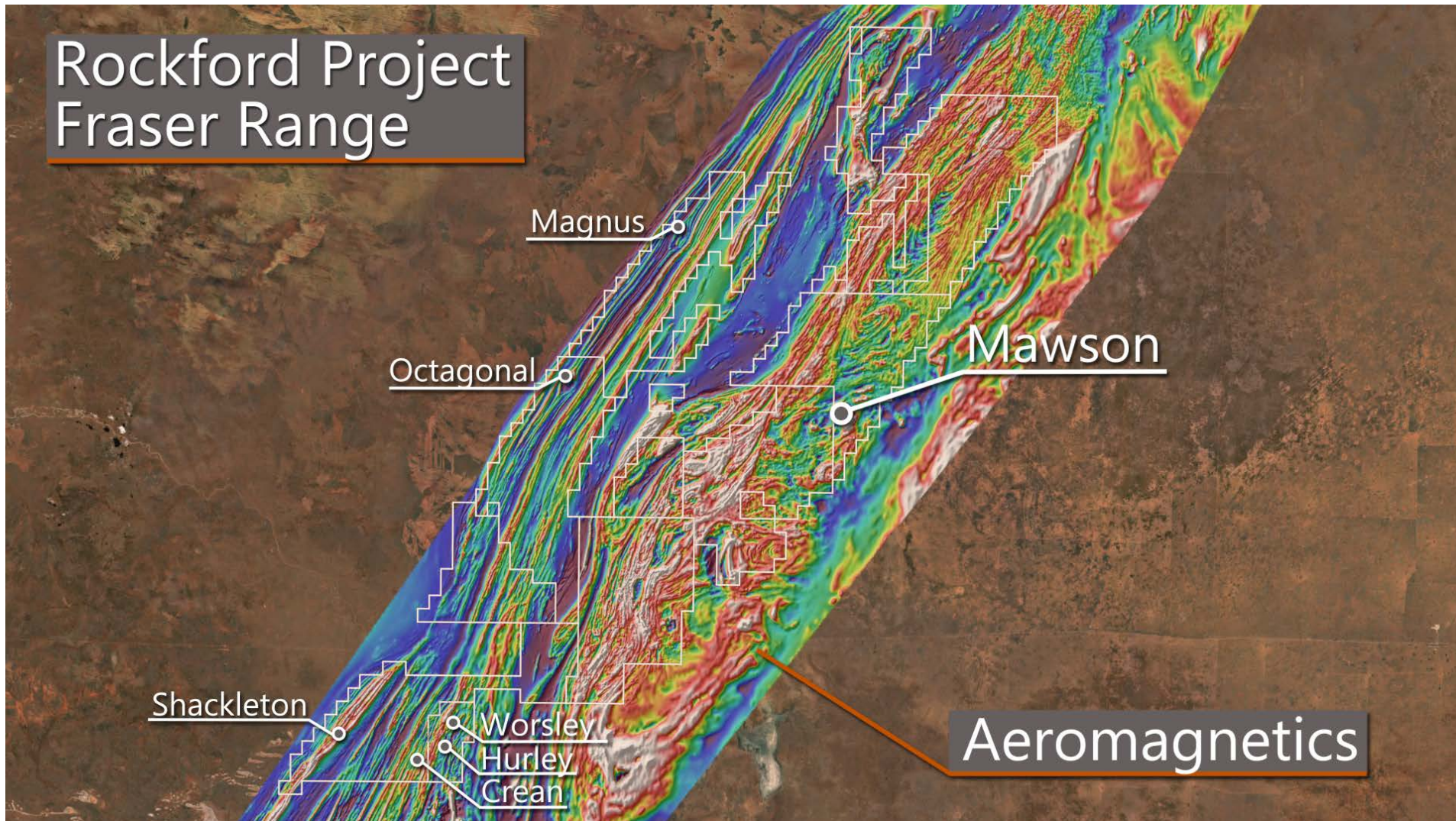
Main Players

-  **Legend Mining**
Active & Funded
-  **IGO**
Active & ~\$9B MC
-  **Galileo Mining**
Active & Funded

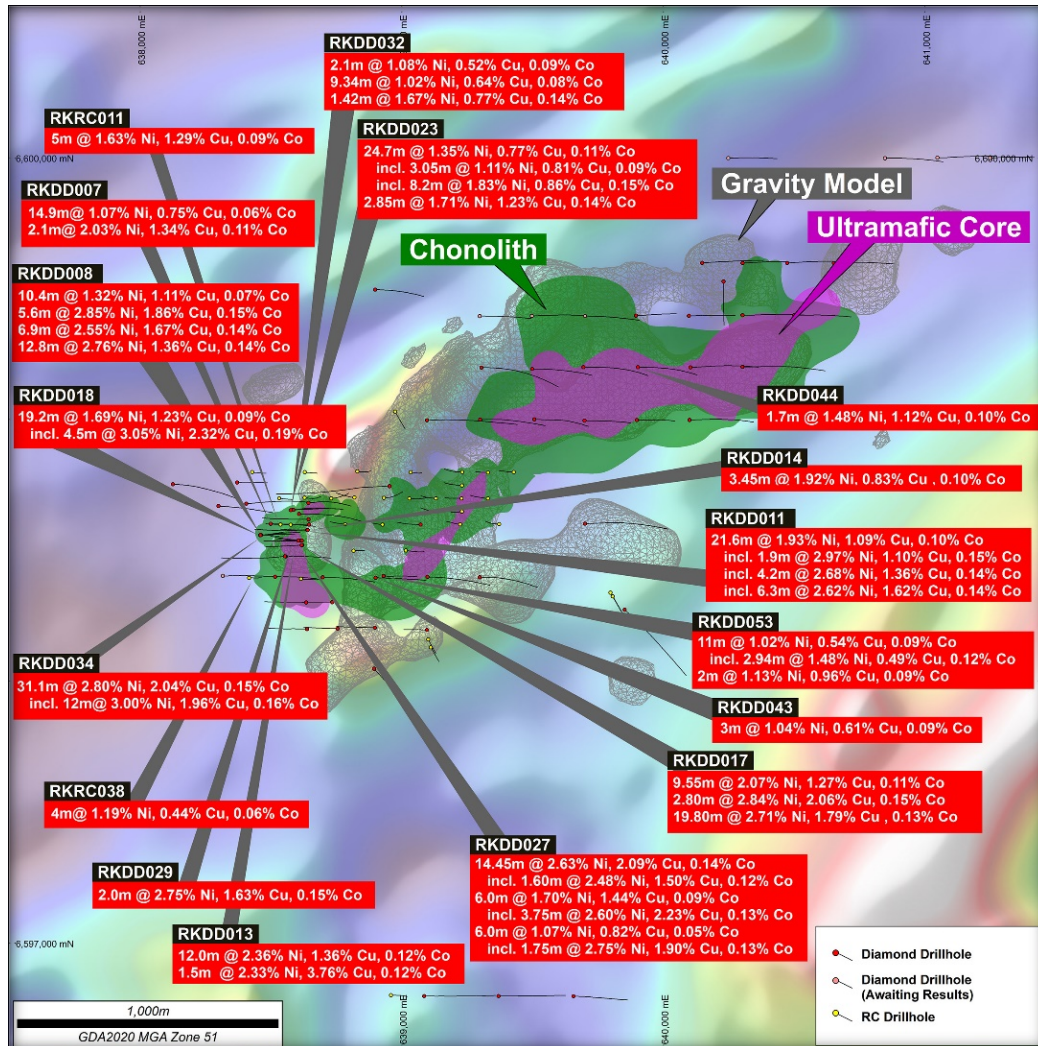
'Want Fraser Range Nickel Exposure? – Legend is the Play'

THE MAWSON INTRUSIVE COMPLEX

Rockford Project Fraser Range



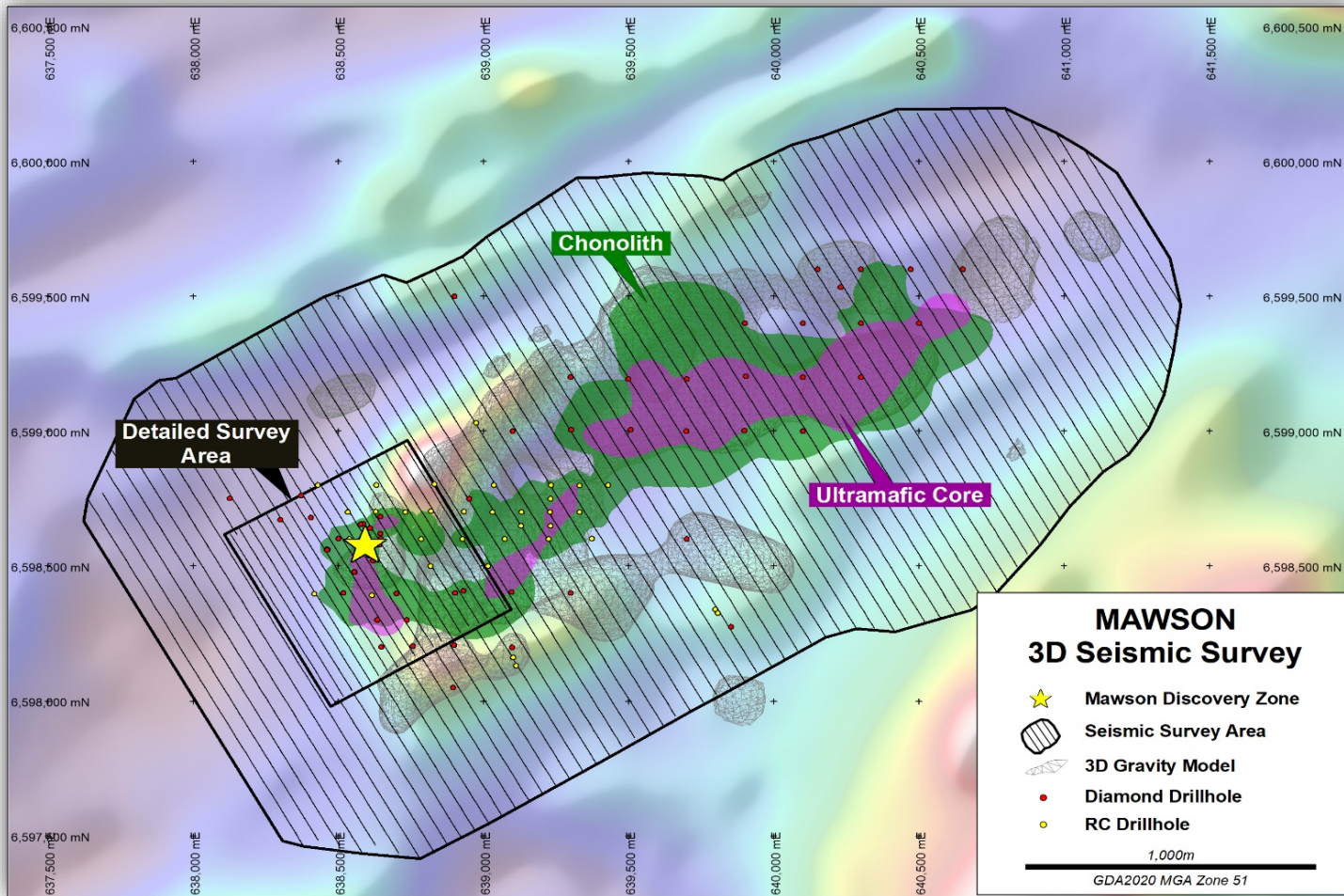
'16km x 6km Cluster of Prospective Intrusions'



What we know...

- Large, mineralised intrusion, remains open in multiple directions
- Structurally controlled intrusion
- Significant thickness of massive Ni-Cu sulphide i.e. 31.1 metres @ 2.80% Ni, 2.04% Cu, 0.15% Co
- Multiple intercepts identifying broad disseminated Ni-Cu sulphide halo
- Mineralised chonolith continues at depth below 500m
- Enormous upside given blinding effects of stratigraphic EM plates and conductive cover

'Results to date suggest we are onto a Large System'



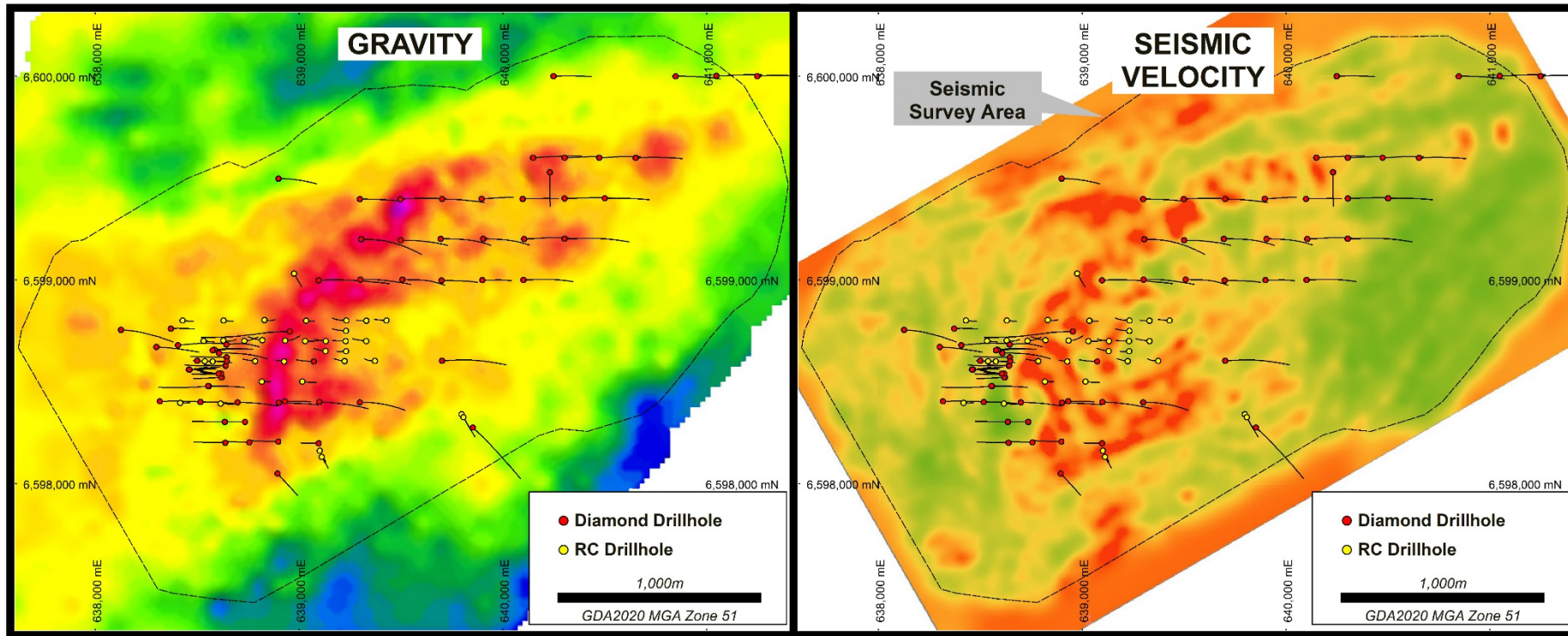
Detailed 3D Seismic Survey Completed

- 6.5km² coverage area
- Aim to define chonolith below 500m depth and outside existing drilling
- Ultra-detailed survey across the discovery zone to test for direct detection signature of massive sulphide

'Designed to Identify Targets between 500m – 1000m'

SEISMIC - VELOCITY - GRAVITY

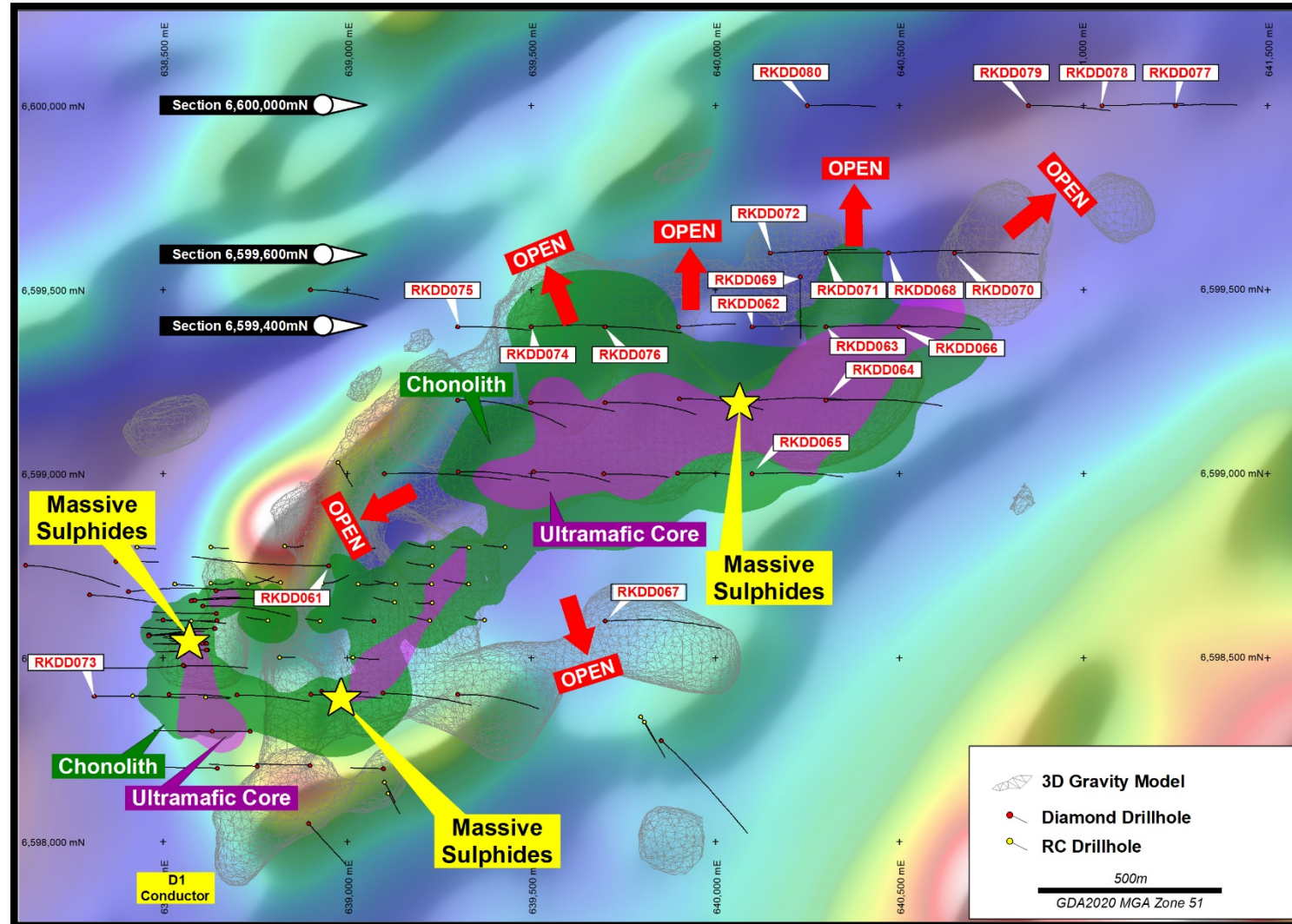
Complementing Geophysical and Geological Datasets are Highly Encouraging...



- Constrained Gravity
- Seismic
- Velocity
- AMAG
- Geology Models
- Structural Model

'Compelling Datasets with Walk-up Targets'

MAWSON PRIORITY DRILLING TARGETS 2022



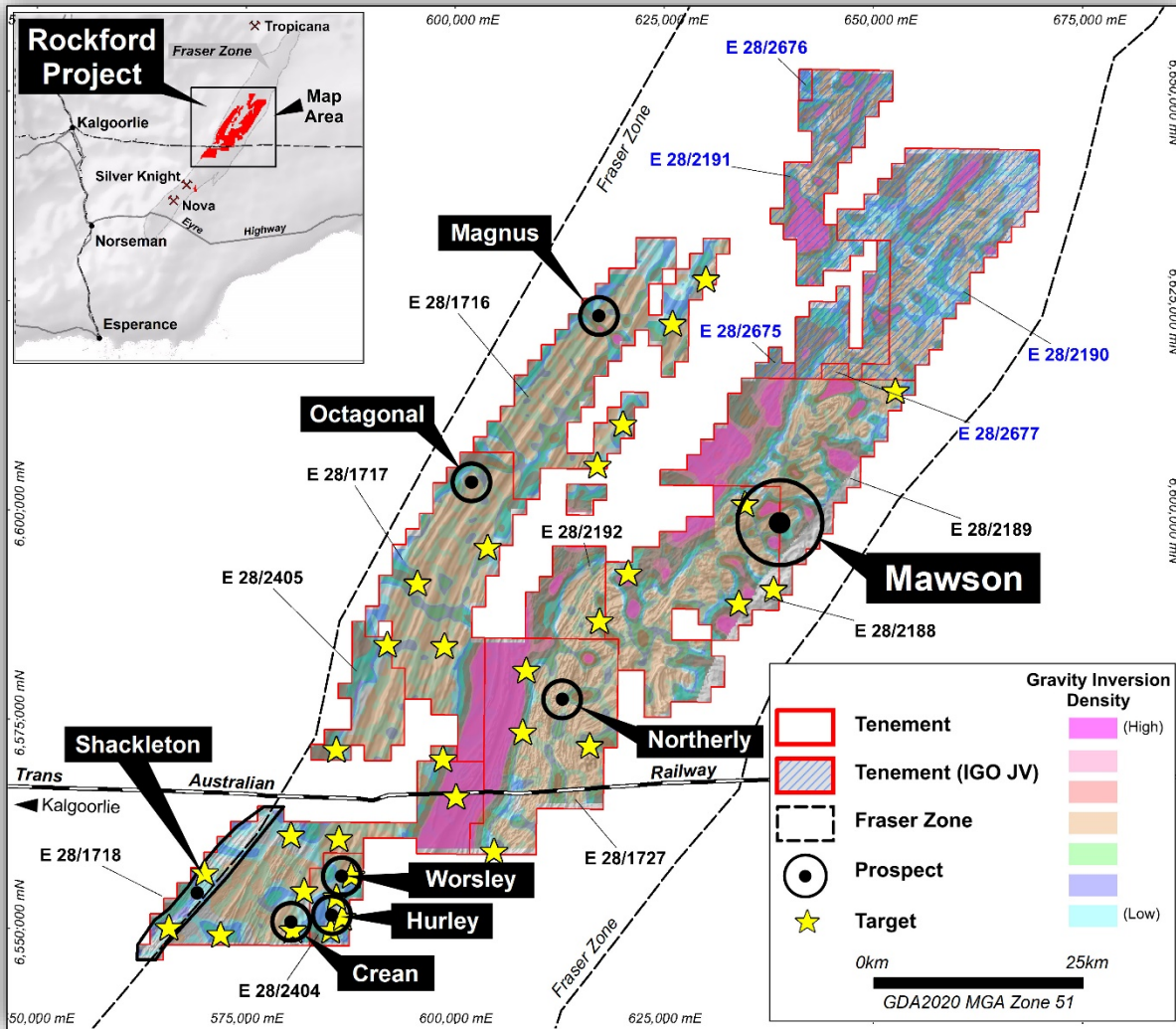
Priority Target Areas to be assessed with Diamond Drilling

- Drilling to start March 2022
- >6,000m planned
- Additional modelling and targeting ongoing
- Rockford Project Budget CY2022 +\$6M

'High Priority Targets to be Tested'



ROCKFORD REGIONAL TARGETS



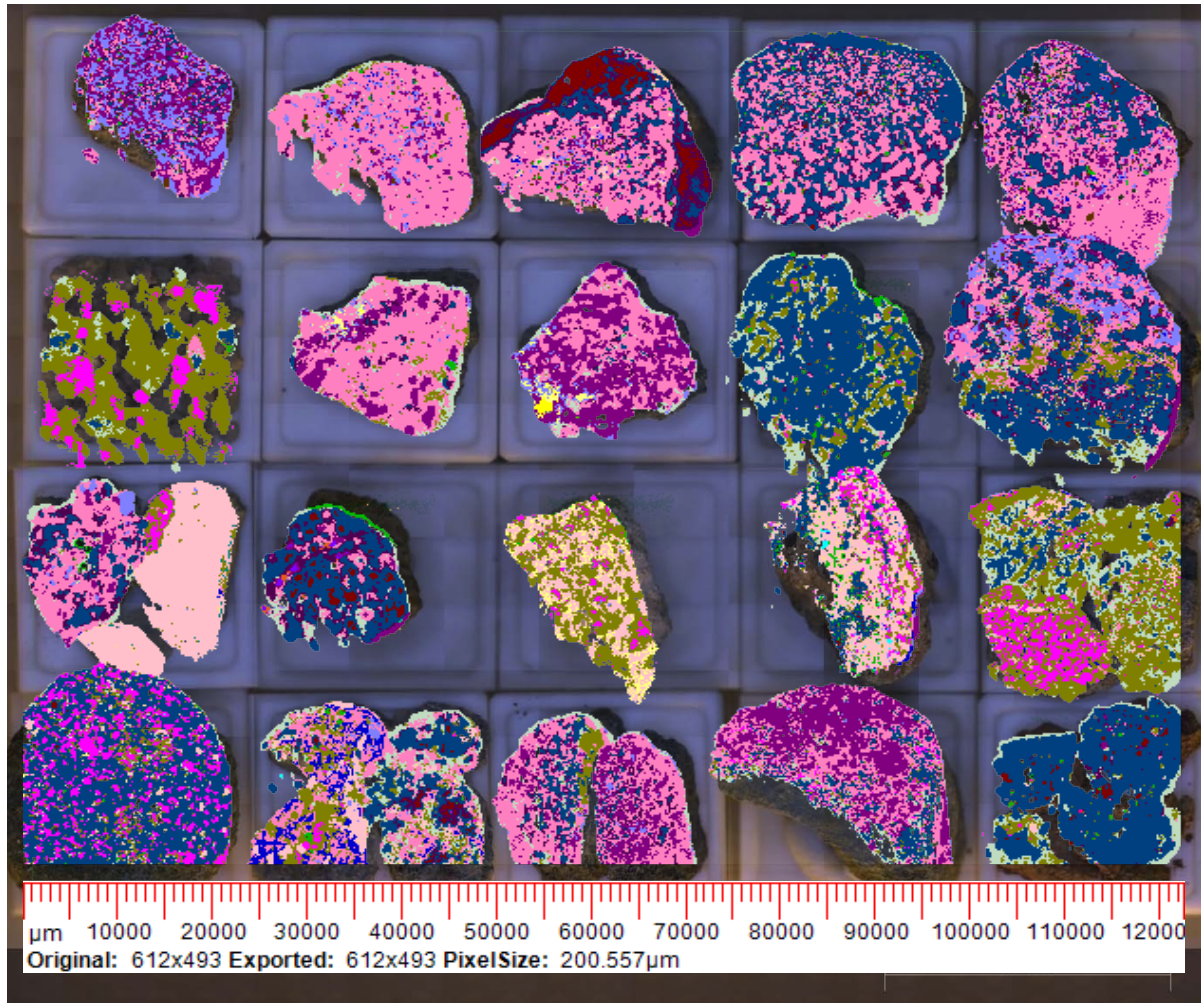
Rockford Prospect & Target Locations

Regional Targets – Testing 2022

- Project scale target analysis
- Intrusion ‘fingerprinting’ - \$Ni Vector Index
- Continue to identify new targets
- Innovative MLTEM scheduled for highest ranked targets
- Follow up with infill AC drilling
- Test compelling targets with RC/DD

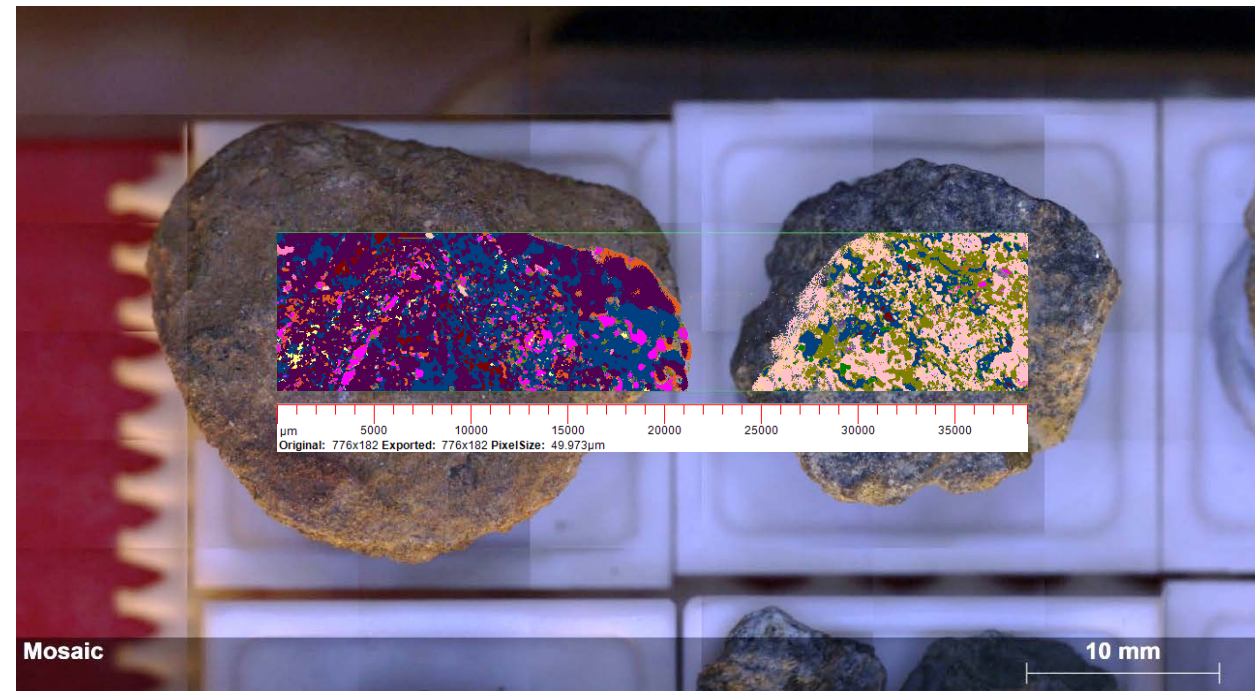
‘Multiple Targets Generated in Addition to Mawson’

TARGET RANKING



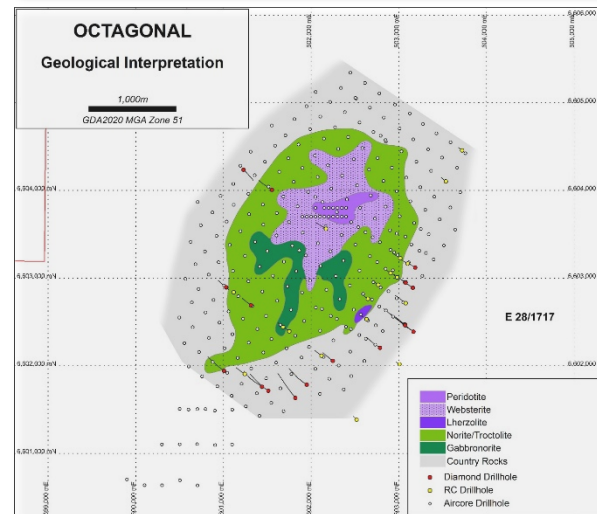
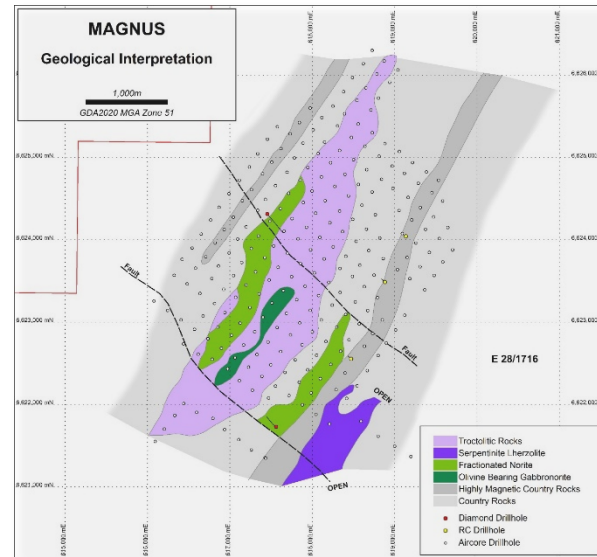
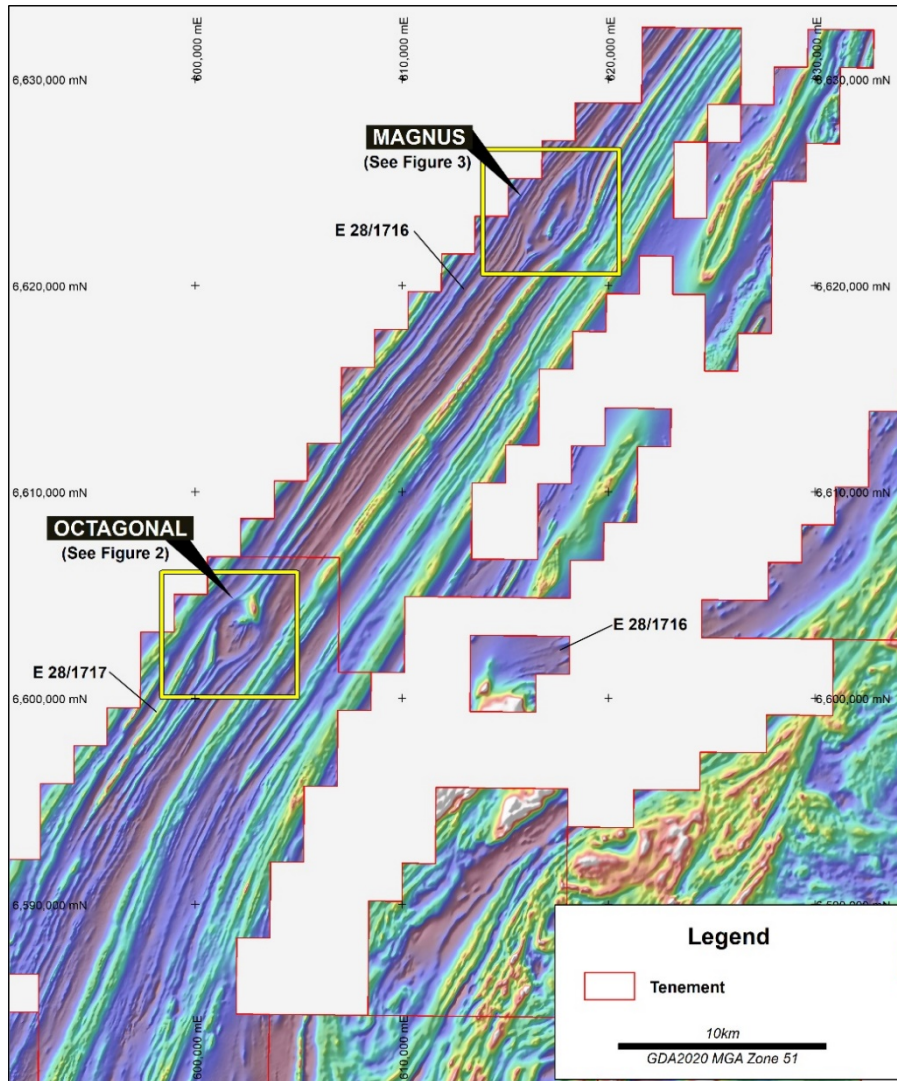
\$Ni Vector Index

- Micro X-ray mineral mapping on aircore/RC chips
- Key mineralogy indicators identified
- Ability to identify \$Ni Fertile Intrusions



'Ability to Identify Fertile Intrusions'

OCTAGONAL & MAGNUS PROSPECTS



Two 'Eye' Feature Intrusions

- Distinctive Nova type 'eye' features
- Aircore & Diamond drilling identified prospective Ni-Cu intrusions with sulphides
- Right intrusive rocks for nickel-copper e.g. Nova/Voisey's Bay
- Ideal targets for Seismic application

'Two Prospective Intrusions on the Nova-Silver Knight Structure'

RECOGNISED INDUSTRY PROFESSIONALS



A & A CRAWFORD
Geological Research
Consultants



RN&N ENGLAND
Petrologist

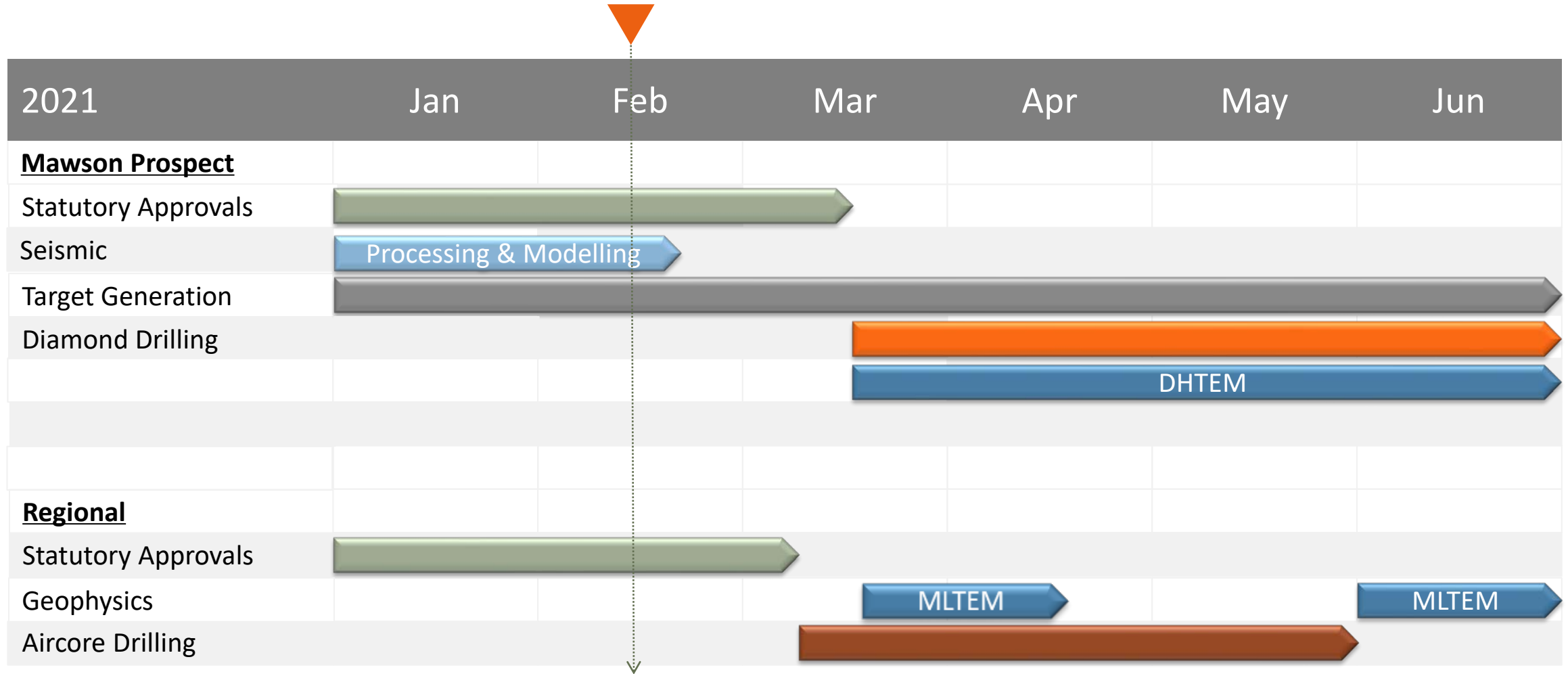


Geochemical Services
Pty Ltd



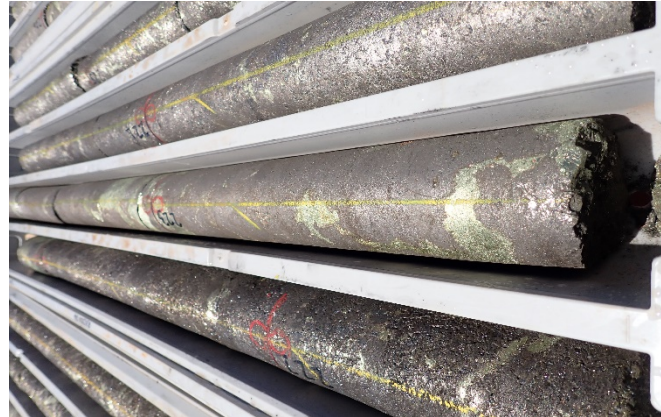
'Persistence and Perseverance will Land the Prize'

ROCKFORD 2022 WORK PROGRAMS



'Systematic Exploration of Existing and New Targets'

JOIN THE LEGEND JOURNEY....



- ✓ Right Project, Right Commodity, Right Time
- ✓ Systematic, Persistent, Committed
- ✓ Well Funded to Execute
- ✓ Right People with Skin in the Game
- ✓ Passion to Grow Shareholder Value

'Highly Leveraged to Success'



The End

Thank you

**Oliver Kiddie
Executive Director**

ASX:LEG

 **@LegendMiningLtd**

