

Walyering Update

- Mobilisation of personnel and equipment underway for the Walyering-5 flow test, with equipment arrival expected in final week of February.
- Laboratory analysis of W5 core samples corroborate petrophysical logs with measured permeability of the A-Sand up to 280mD.
- Long lead items and rig slot secured for Walyering-6.
- Engineering, approvals and regulatory submissions for Walyering gas field development are underway.

Strike Energy Limited (Strike - ASX: STX) provides an update on the development of the Walyering gas field on behalf of the EP447 JV, where Strike is operator and the holder of 55% and Talon Energy (ASX: TPD) the other 45%.

Walyering-5

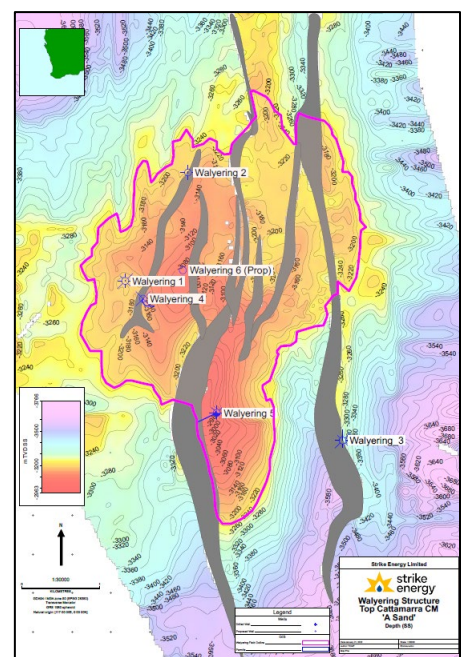
Mobilisation for the W5 well test is underway, with well testing personnel now in WA under COVID-19 protocols and designated testing equipment en-route to Australia from the Middle East. All required equipment and personnel are expected to be mobilised and free to work by the last week of February where well testing will commence shortly after. Each of the four reservoirs in the Jurassic Cattamarra Coal Measures (A, B, C and D) will be tested individually for several days, before being followed by a comingled test of all horizons. This testing program will support the understanding of the pressure dynamics between the sands and the potential contribution from each zone. The testing program is expected to take 15-20 days to complete.

Positive results have been received from the core laboratory testing the W5 A-Sand core plugs. Laboratory measured permeability at in-situ overburden pressures have been upgraded to 280mD confirming the log derived measurements previously announced. This further supports the assessment of the high deliverability nature of these reservoirs.

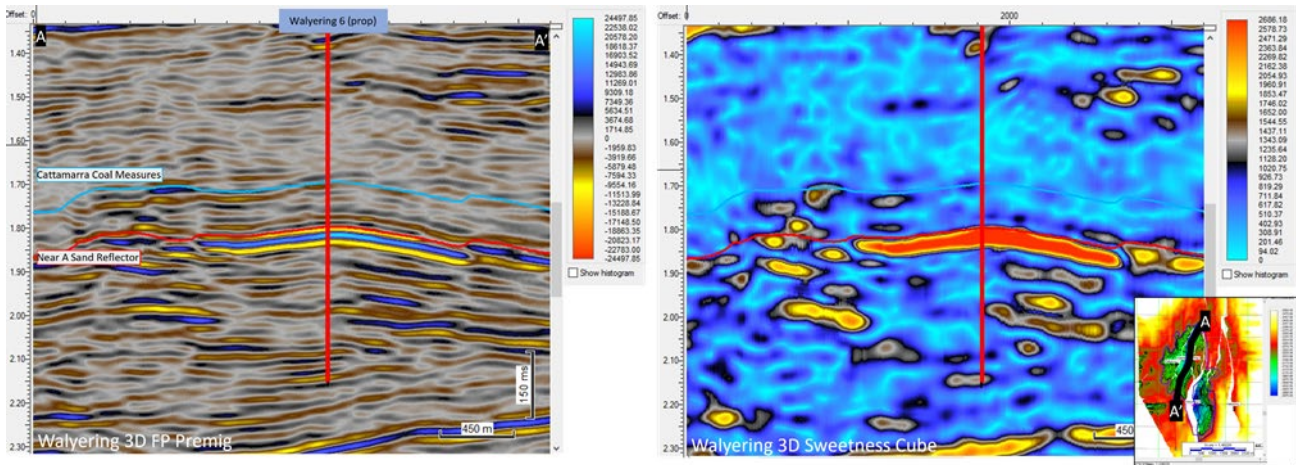
Walyering-6

Strike has secured the long lead items for the drilling of W6, which includes the provision of a rig slot on the Ensign 970 in Strike's forward program.

W6 is to be located in the western lobe of the field updip of the Walyering 1 and 4 wells where gas bearing sands were encountered. On success, W6 will also be completed for future production operations.



Walyering-6 bottom hole location on 3D seismic



Walyering Gas Field Development

Strike has submitted the Discovery Assessment Report and the Declaration of Location documentation to the regulator in order to progress to a Production License application as soon as the location has been gazetted.

For the proposed facilities, Strike has engaged APA Group to facilitate a tie back into the historical Walyering flange at the adjacent compressor station of the Parmelia Gas Pipeline (PGP) and Primero Group, who is completing the engineering and design for the gathering system and other upstream equipment required to bring Walyering back into production.

The principles for the Walyering gas field development concept include:

- 2 production wells, W5 & 6.
- Up to 30 TJ/d capacity (estimated 10-15 TJ from each well).
- Export to WA industrial domestic gas market via APA Group, Parmelia Gas Pipeline.
- Minimal processing equipment due to low CO₂ and no measured H₂S or N₂.
- Condensate storage & offtake service to road trains for export.
- No initial compression due to high reservoir pressures (~4,400 psi) and lower operating pressures of the PGP (designed for ~1,087 psi currently operating at ~725 psi).
- Maximising local suppliers and supply chains to accelerate procurement timeframes.

This development will be further refined and updated during the detailed design with the final facilities design to be confirmed when the W5 well test is complete.

In advance of the final detailed design Strike has started work on its various land and environmental approvals across multiple Government, state and regional agencies, in order to submit the Field Management Plan in advance of a joint venture development decision.

This announcement is authorised for release by the Managing Director and Chief Executive Officer in accordance with the Company's Continuous Disclosure Policy.

Company Contact

Georgina Fraser
Investor Relations
E: georgina.fraser@strikeenergy.com.au

Media Contacts

Paul Ryan (Citadel-MAGNUS)
P: 0409 296 511
E: pryan@citadelmagnus.com