



EXPLORING NEW COPPER-GOLD FRONTIERS

for a clean energy future



Important Notices and Disclaimers

Nature of Document: This presentation has been prepared and issued by WAL Resources Ltd (WAL, the Company) to provide general information about the Company. The information in this document is in summary form and should not be relied upon as a complete and accurate representation of any matters that a reader should consider in evaluating the Company. While management has taken every effort to ensure the accuracy of the material in this presentation, the Company and its advisers have not verified the accuracy or completeness of the material contained in this presentation.

Forward-Looking Statements: This presentation contains forward-looking information about the Company and its operations. In certain cases, forward-looking information may be identified by such terms as "anticipates", "believes", "should", "could", "estimates", "target", "likely", "plan", "expects", "may", "intend", "shall", "will", or "would". These statements are based on information currently available to the Company and the Company provides no assurance that actual results will meet management's expectations. Forward-looking statements are subject to risk factors associated with the Company's business, many of which are beyond the control of the Company. It is believed that the expectations reflected in these statements are reasonable but they may be affected by a variety of variables and changes in underlying assumptions which could cause actual results or trends to differ materially from those expressed or implied in such statements. There can be no assurance that actual outcomes will not differ materially from these statements.

Disclaimer: No representation or warranty, express or implied, is made by the Company that the material contained in this presentation will be achieved or proved correct. Except for statutory liability which cannot be excluded, each of the Company, its directors, officers, employees, advisors and agents expressly disclaims any responsibility for the accuracy, fairness, sufficiency or completeness of the material contained in this presentation and excludes all liability whatsoever (including in negligence) for any loss or damage which may be suffered by any person as a consequence of any information in this presentation or any effort or omission therefrom. The Company will not update or keep current the information contained in this presentation or to correct any inaccuracy or omission which may become apparent, or to furnish any person with any further information. Any opinions expressed in the presentation are subject to change without notice.

Not financial product advice: Neither the Company nor any of its related bodies corporate is licensed to provide financial product advice in respect of the Company's securities or any other financial products. You should not act and refrain from acting in reliance on this presentation. Nothing contained in this presentation constitutes investment, legal, tax or other advice. This presentation does not take into account the individual investment objectives, financial situation and particular needs of Company shareholders. Before making a decision to invest in the Company at any time, you should conduct, with the assistance of your broker or other financial or professional adviser, your own investigation in light of your particular investment needs, objectives and financial circumstances and perform your own analysis of the Company before making any investment decision.

Not an offer: This presentation and its contents are not an invitation, offer, solicitation or recommendation with respect to the purchase or sale of any securities in the Company in any jurisdiction and must not be distributed, transmitted, or viewed by any person in any jurisdiction where the distribution, transmission or viewing of this document would be unlawful under the securities or other laws of that or any other jurisdiction. This presentation is not a prospectus or any other offering document under Australian law (and will not be lodged with the Australian Securities and Investments Commission) or any other law.

Competent Person Statement: The information in this presentation that relates to Exploration Results is based on information compiled by Mr. Paull Parker who is a Member of the Australian Institute of Geoscientists and is a member of the AusIMM. Mr. Parker is a director of WAL Resources Ltd and has sufficient experience which is relevant to the style of mineralisation under consideration to qualify as a Competent Person as defined in the 2012 Edition of the "Australian Code for Reporting of Exploration Results, Mineral Resources and Ore Reserves". Mr. Parker consents to the inclusion in the presentation of the matters based on his information in the form and context in which it appears.

Authorisation Statement

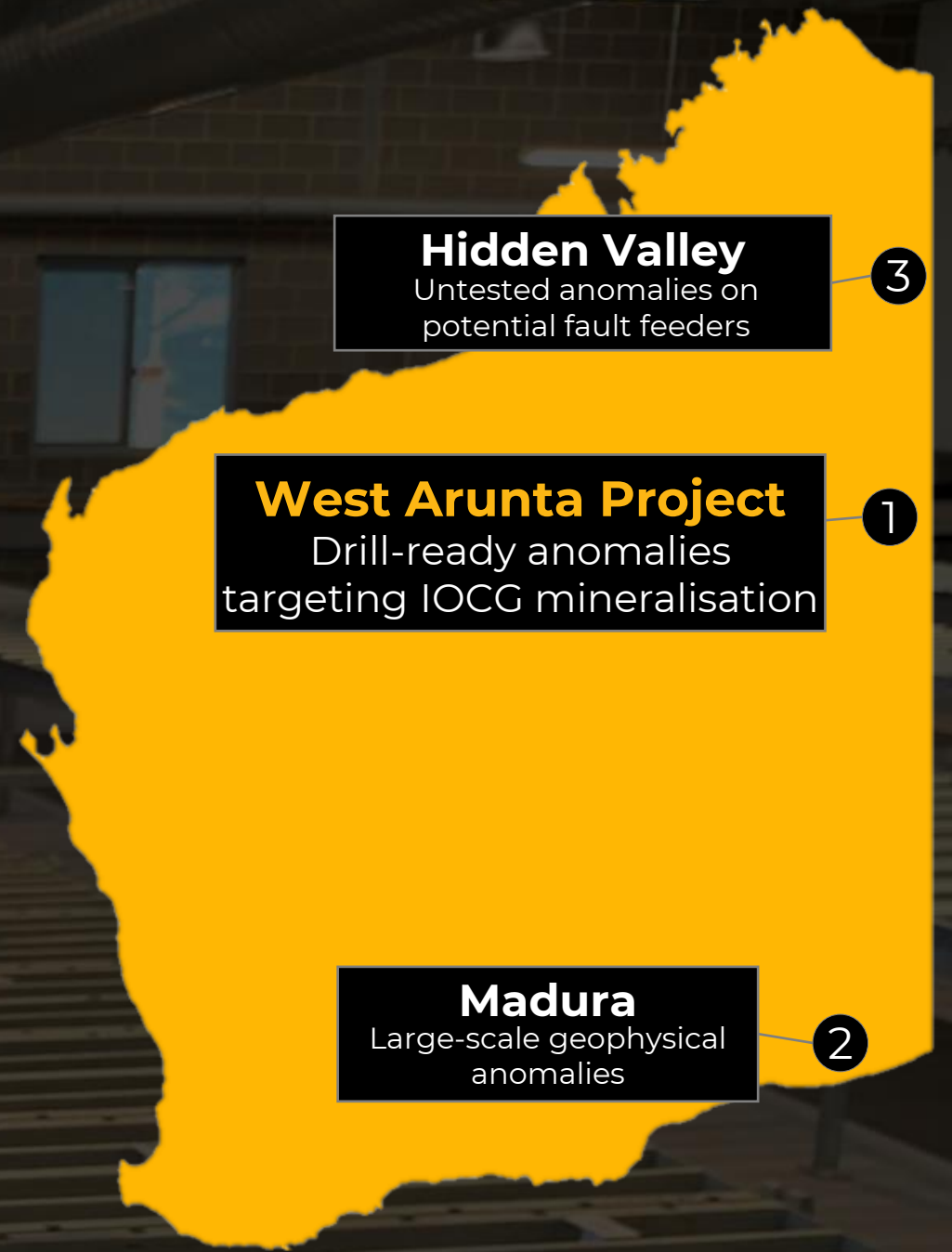
This presentation is authorised for market release by WAL's Board of Directors.

All currency amounts are in Australian dollars unless specified otherwise.



Investment Snapshot

- **ASX: WVA1** – commenced trading on ASX on 8 February
- **Focus** – essential metals for a clean energy future
- **West Arunta Project** – targeting a Tier 1 IOCG discovery
- **Madura Project** – generating greenfield IOCG targets
- **Hidden Valley Project** – testing anomalies with potential to host Ni-Cu-PGE mineralisation
- **Project Generation** – technical team focused on future opportunities
- **Experienced Team** – strong track record of remote Western Australian exploration





Corporate Overview

Board of Directors

Gary Lethridge Non-Executive Chairperson

- Significant corporate experience
- Ex-Jubilee (\$3.1b takeover by Xstrata)
- Previously at Echo (\$300m takeover by NST), Talisman Mining

Paul Savich Managing Director

- Experienced project generator, ex-Tali Resources
- Metaliko/Echo (Bronzewing acquisition & merger)

Paul Parker Non-Executive Director

- Highly experienced geologist in project generation
- IGO in roles incl. Chief Geologist
- Sandfire - Principal Technical Geologist

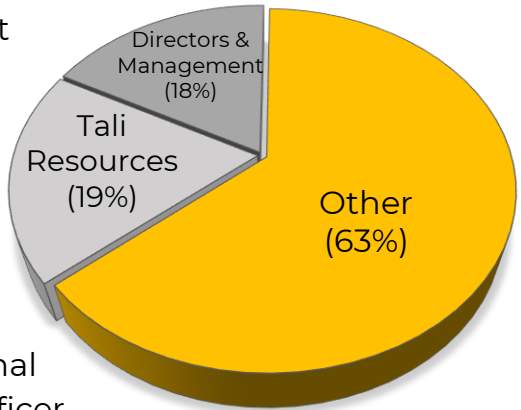
Rhys Bradley NED & Co. Sec

- Extensive capital markets experience and global investor relationships
- ESG and compliance professional
- Agrimin - Chief Commercial Officer

Capital Structure

(8 February 2022)

ASX Ticker	WAI
Ordinary Shares on Issue	44.8M
Unlisted Director Options (ex. \$0.30)	3.5M
IPO Listing Price	\$0.20
Market Capitalisation (\$0.20cps)	\$9.0M
Cash at Bank	~\$4.6M
Debt	Nil
Enterprise Value	\$4.4M



Shareholders

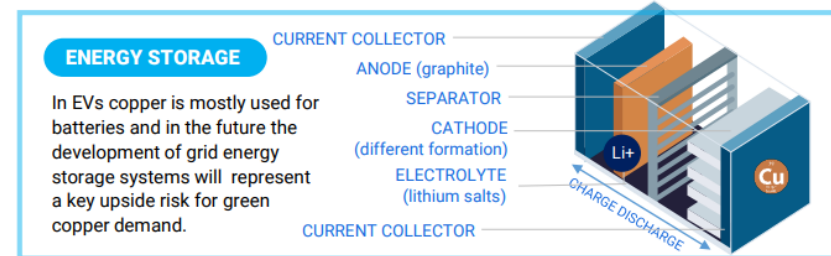
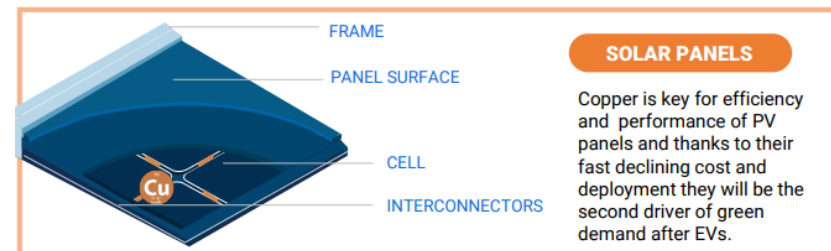
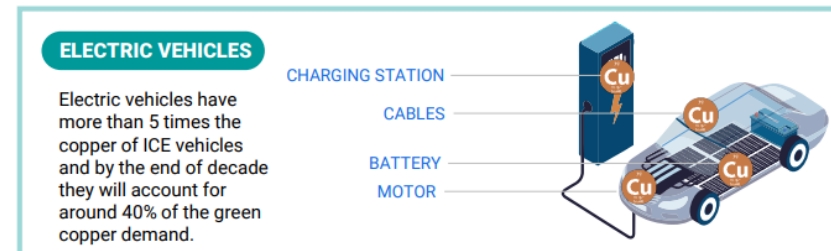
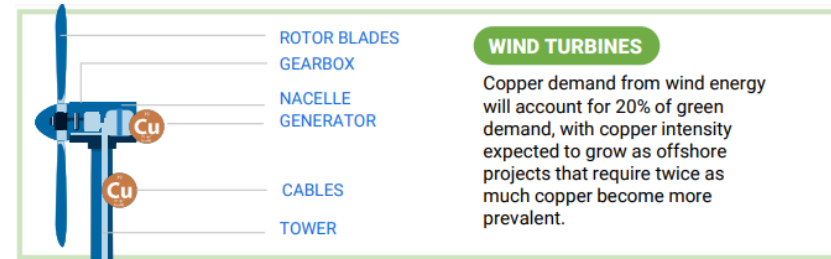
Substantial Shareholders

Tali Resources Pty Ltd	19%
Board & Management	18%
Other Top 20	26%
Other	37%



Why Copper?

- **Copper has one of the best long-term fundamentals** among commodity markets
- **Renewable energy infrastructure** will be the single largest driver of demand growth for copper
- Changes in long-run commodity prices are rare events and only take place when there is a **significant shift in market fundamentals**
- Importantly, these are global trends which are expected to **add >6Mt of copper demand throughout the 2020's**
- Projected pipeline of new copper mines is currently the lowest this century
- **A high copper price will continue to incentivise new discoveries and developments**



Sources: Goldman Sachs Global Investment Research 13 April 2021, World Bank, ICA, Copper Alliance



West Arunta Project

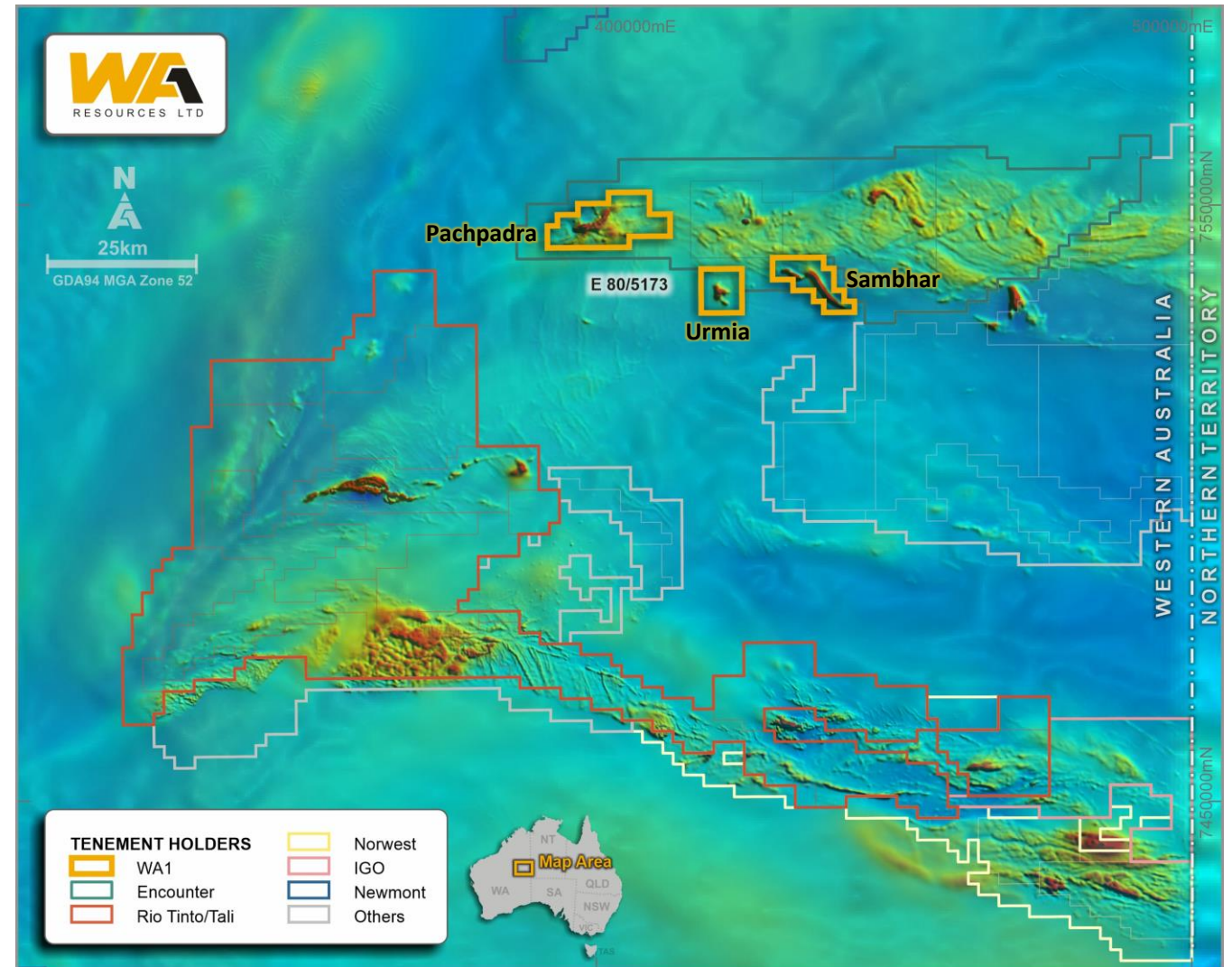
Western Australia | 100%-owned, no private royalties

- **The West Arunta region has potential to be the next exploration frontier in Australia to deliver a major IOCG province such as the Gawler Craton and Cloncurry mineral districts**
- **WA1 is at the forefront of the major exploration push into the West Arunta in 2022**

The West Arunta Province

- IOCG deposits are associated with accumulations of hematite (dense) and magnetite (dense and magnetic), therefore **large coincident gravity-magnetic anomalies** can indicate the presence of IOCG deposits
- Three large, structurally controlled, coincident gravity-magnetic anomalies** now defined by high resolution aeromagnetics and ground gravity:
 - Pachpadra Prospect:** Complex of discrete geophysical targets with outcrop, along strike from alteration at Aileron
 - Urmia Prospect:** Drill-ready large scale IOCG target
 - Sambhar Prospect:** 10+km folded stratigraphic formation prospective for a number of styles of mineralisation
- Historically, **only two holes drilled in the area**, including one hole on WA1's tenure

West Arunta Regional Tenure Map with Magnetics

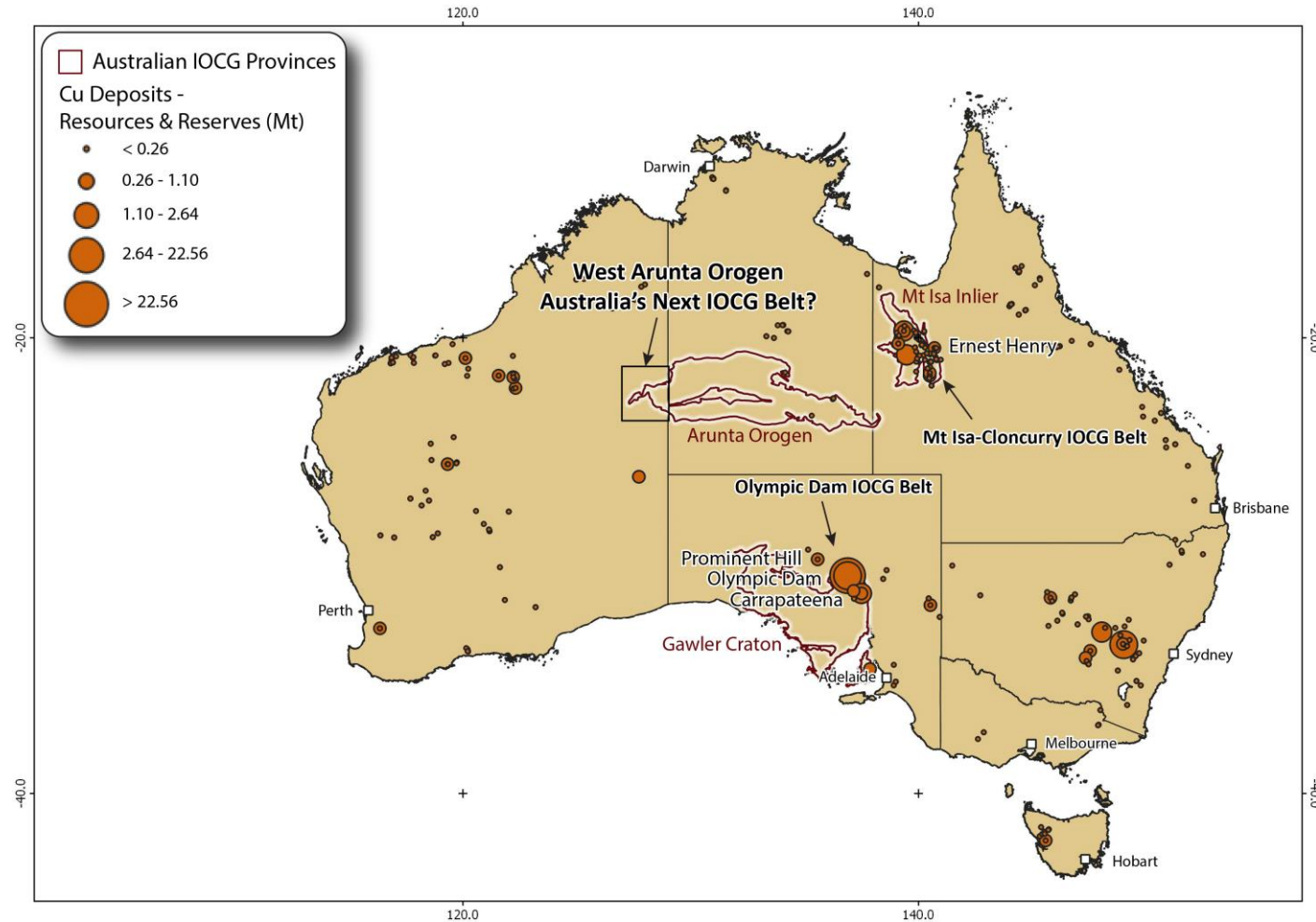


The Next IOCG Belt

- **The West Arunta Orogen contains known IOCG-style mineralisation and anomalism, has intrusives typically associated with IOCG deposits** and contains major structural features and a complex deformation history – elements similar to other known IOCG provinces
- **Important genetic relationship** between existing provinces and the West Arunta:

 - Similarly evolved/fractionated metaluminous, A-Type granites
 - Similar oxidation state (i.e. oxidised to strongly oxidised) → important for ore element compatibility
- **District is at a continental-scale triple point junction** → favourable geodynamic setting
- **District is a transcrustal intersection** of the NS Lake Mackay Fault (LMF) and the EW Central Australian Suture (CAS)
- Identified as prospective for large mineral systems in 1995¹ but **remains extremely under-explored**

Copper Deposits of Australia¹



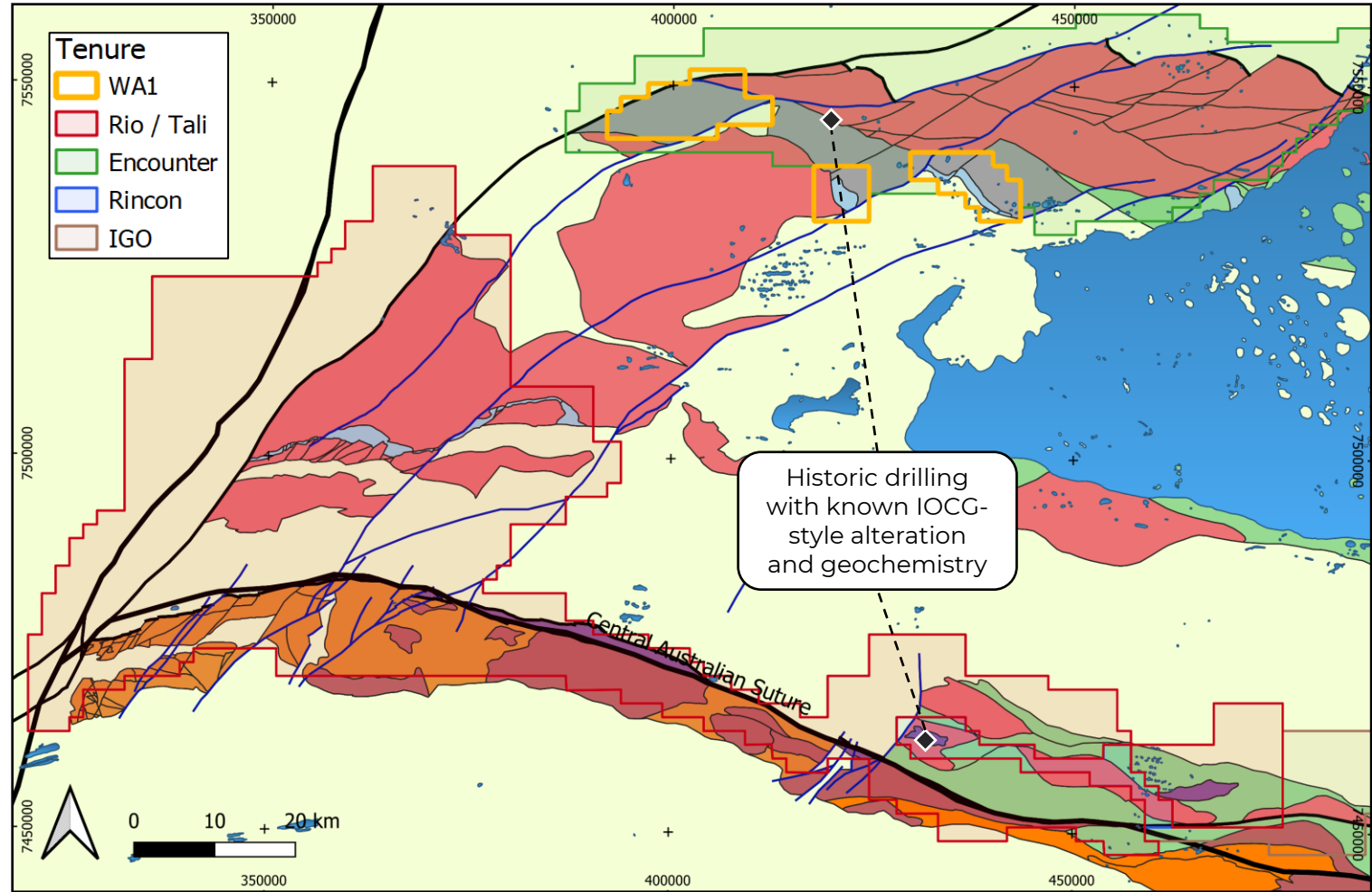
¹ Australian Geological Survey Organisation, Lesley Wyborn et.al 1996/5

Highly Prospective Geology

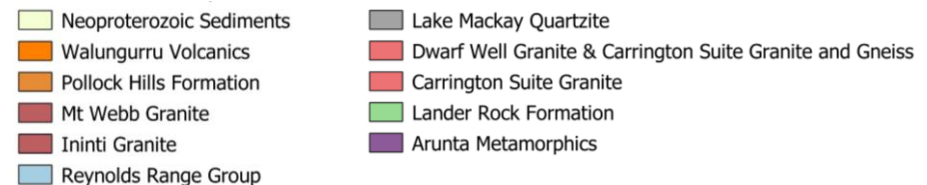
Simplified Geology & Tenure Map of the West Arunta

- **Majority of Australia's copper mineral wealth comes from deposits of the Proterozoic Eon¹: 2,500 Ma to 542 Ma.**
 - ~70% of copper reserves
 - ~85% of zinc reserves
 - ~30-40% of gold reserves
 - ~90% of uranium and lead reserves

- **Reynolds Range Group of the Aileron Province:**
 - Age: Reynolds Range Group c. 1,750Ma vs Staveley c. 1,740 Ma (Cloncurry)
 - Stratigraphy: metamorphosed sediments with local massive, magnetite-dominant, ironstone lenses
 - Setting: rift basin on granitic basement



West Arunta tenure with interpreted structural geology lines underlain by interpreted basement geology.



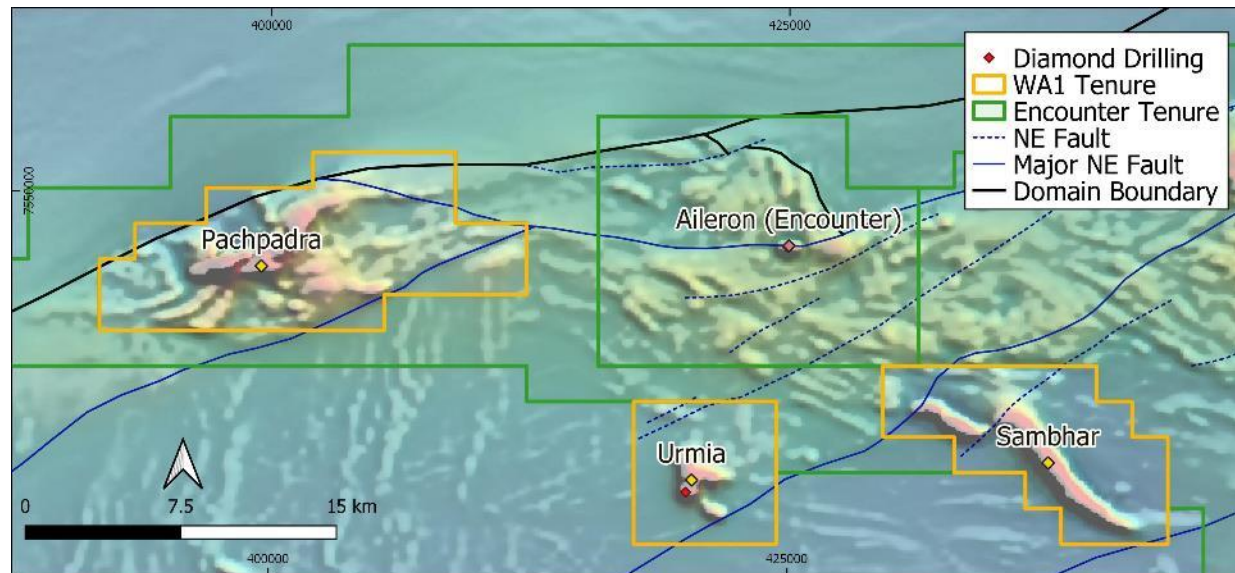
¹ Geoscience Australia: AusGeo News Issue No. 88

Refer to the WAI Prospectus dated 29 November 2021 for further details and to the Forward-Looking Disclaimer.

Historic Exploration – Aileron

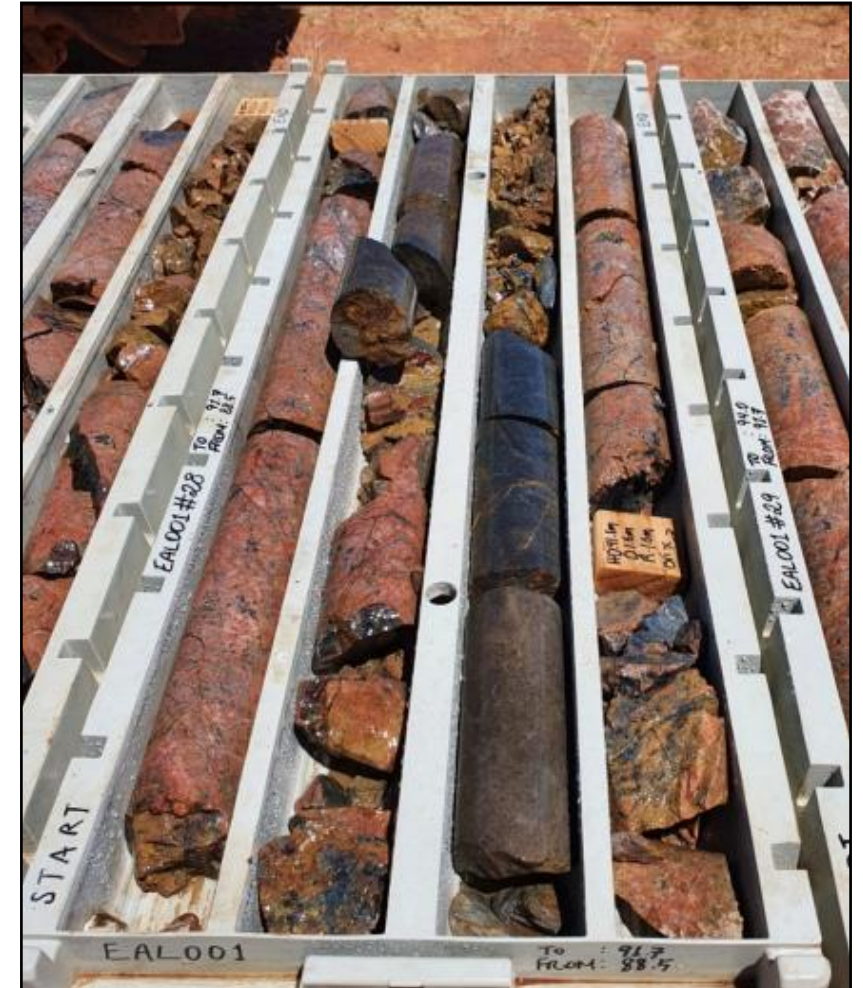
- **Only two historic holes** drilled in the area – one into Aileron and one into Urmia
- Encounter drilled a 158m diamond hole in 2020 into Aileron, intersecting **hydrothermally-altered mafic intrusions with distinctive IOCG signature** (Cu, Au, Mo, elevated REE) and altered potassic granite¹

Projects Map & Historic Drilling



Prospects with Tenure, Key Structural Lines over TMI RTP Magnetics

Historic Drill Hole – Aileron

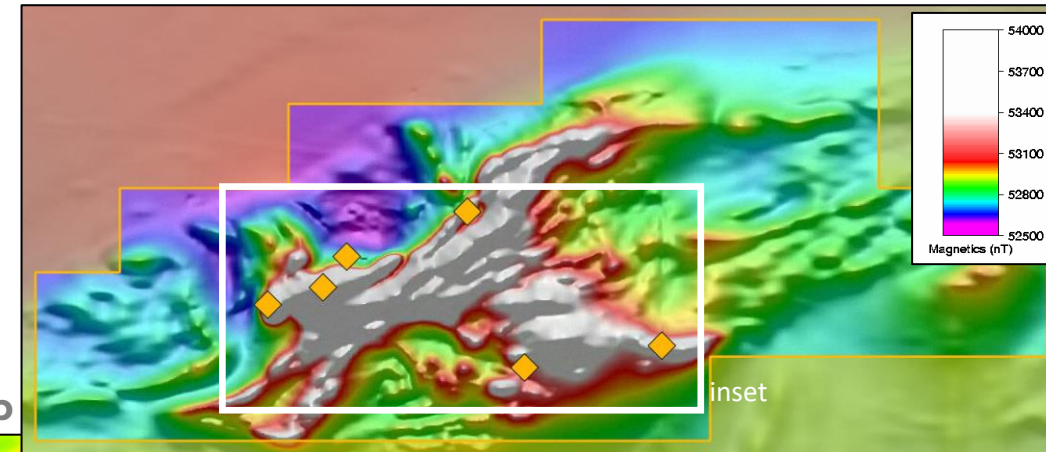


Source & Note 1: Encounter Resources Limited ASX Announcement on 28/1/21, Hematite altered and fractured, coarse grained granitic rock with narrow mafic intrusive (88.5 – 91.7m)

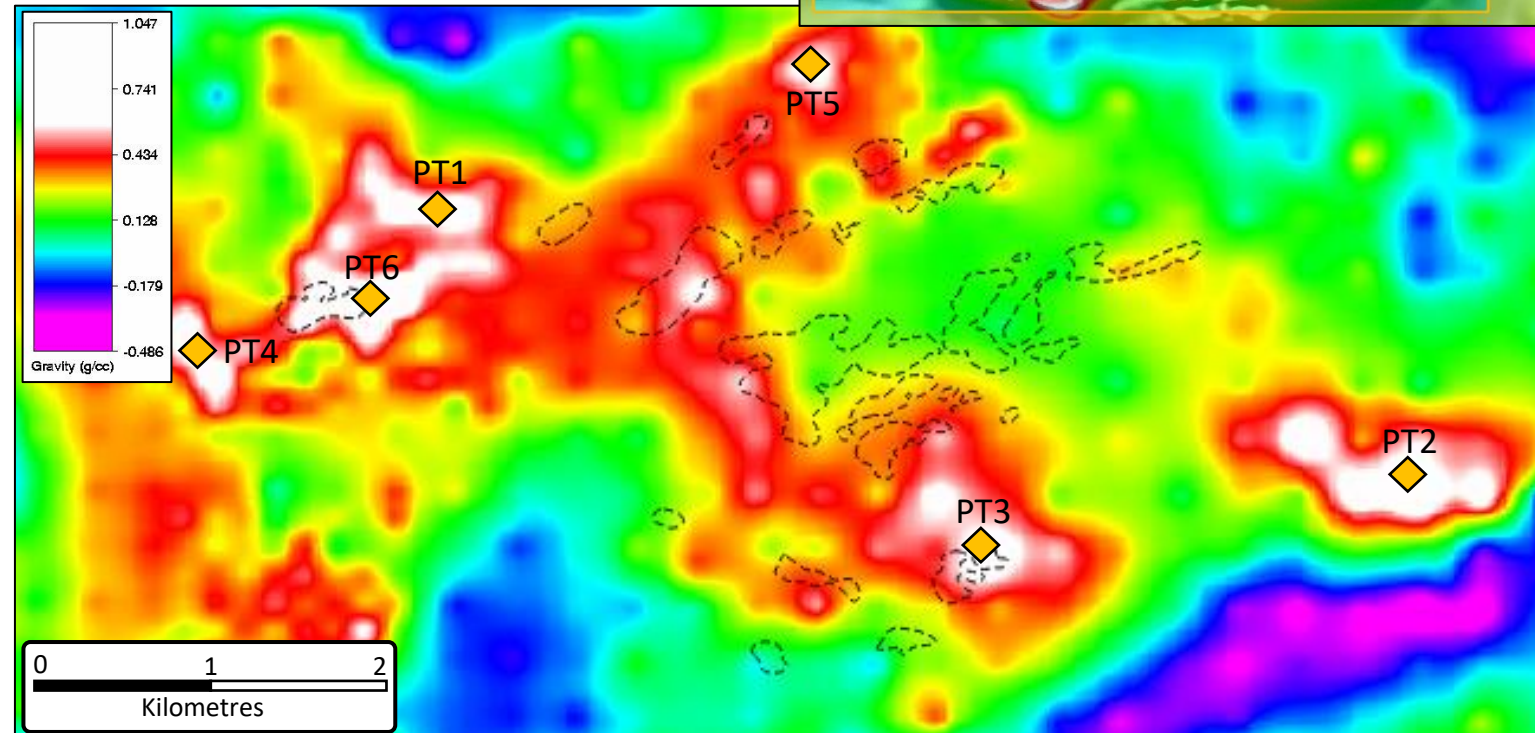
Pachpadra Prospect

- Pachpadra is a 12km long, NE elongated, complex magnetic anomaly located within the Lake Mackay Quartzite (250K mapping) in an interpreted fold nose position
- **Geophysical response suggests large concentrations of Fe-oxides** near to surface and sub-to-outcropping
- Detailed mapping and geochem is planned for early-2022 to improve geophysical interpretations and assist with ranking targets for drilling
- **EIS co-funding grant for \$150k received**

Magnetics with Key Targets



Gravity with Key Targets & Outcrop



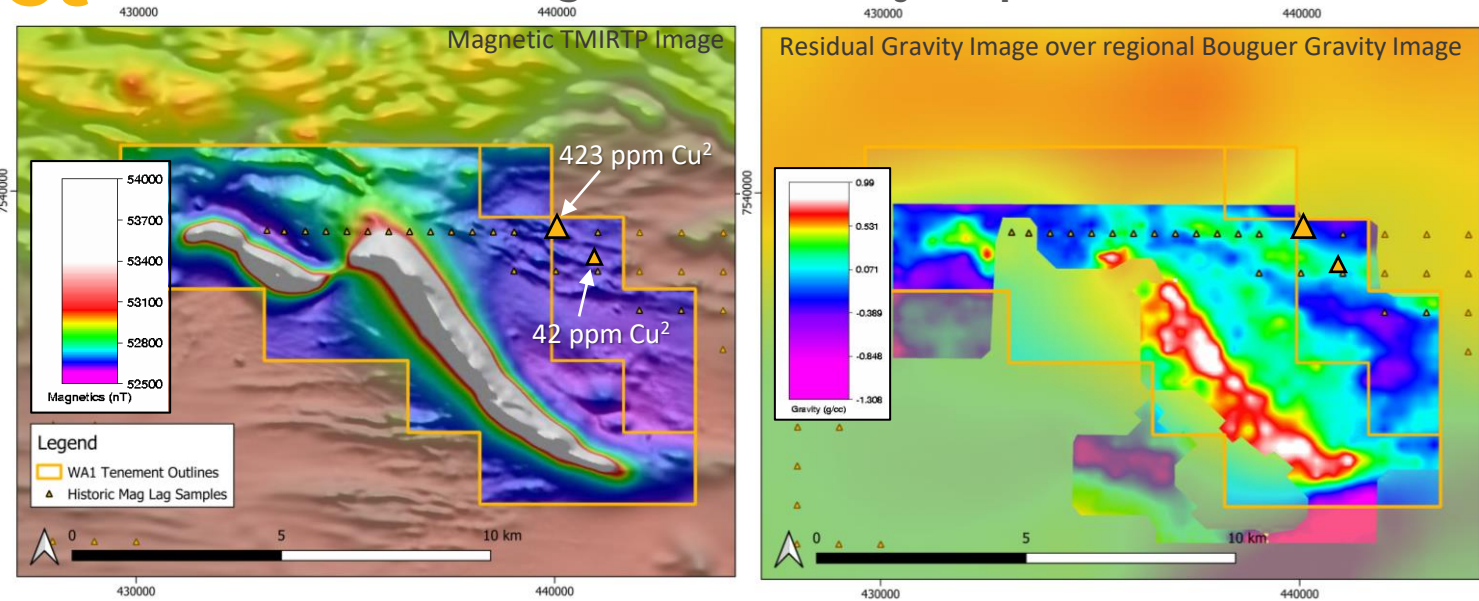
Above: Pachpadra Prospect with WA1 Tenure, TMIRTP Magnetics and Prospects

Left: Residual Gravity image with current target areas and Interpreted Outcrop areas dashed

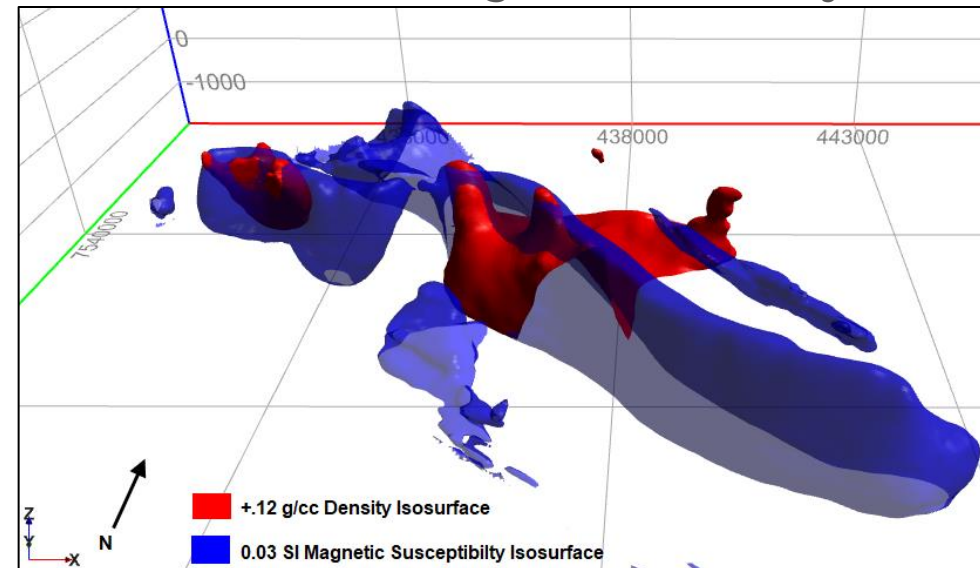
Sambhar Prospect

- Located south of the Carrington Suite Granite **between two major shear zones**
- 10km long, NNW trending magnetic anomaly with a strong amplitude
- Broad lag sampling across the northern end of the prospect returned a best assay of **423ppm Cu¹** associated with anomalous Au, Ce, La, Bi elements that may be anomalous in IOCG-style mineralisation²
- Mapping outcrop and follow-up geochemistry in early 2022 to better understand how the trend connects to the NW and progress to drill-readiness

Sambhar – Magnetic and Gravity Responses



Sambhar – Unconstrained 3D Magnetic and Gravity Inversion Results

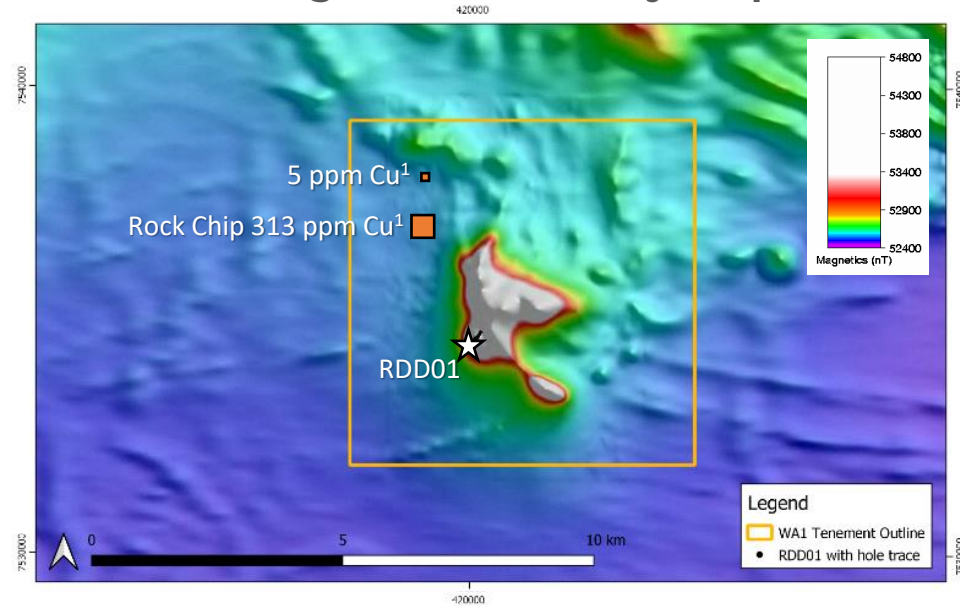


¹ Beadell Resources Ltd WAMEX Report A86251, completed 24 lag samples, average Cu across all samples was 37ppm Cu
Refer to the WA1 Prospectus, Appendix B dated 29 November 2021 for further details and to the Forward-Looking Disclaimer.

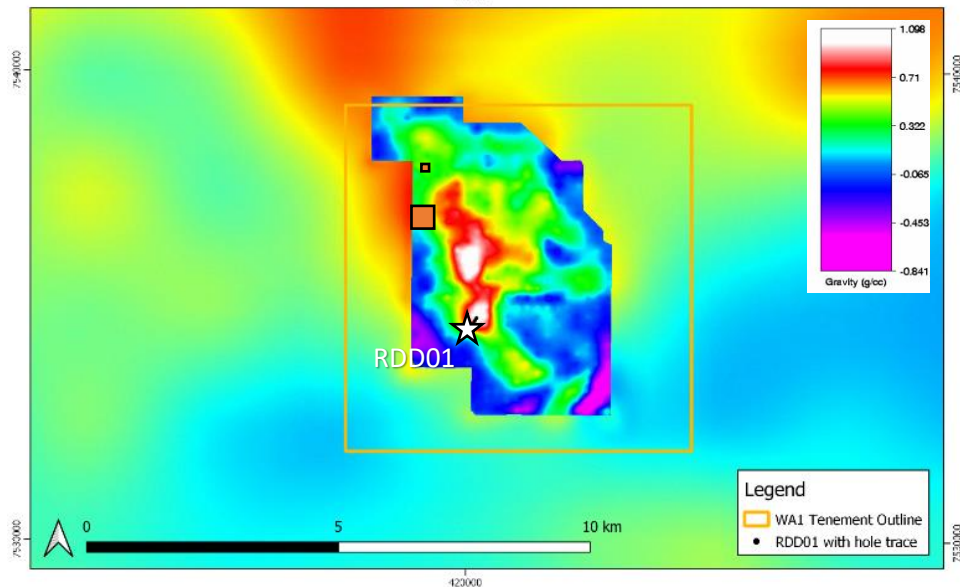
Urmia Prospect

- Urmia has been mapped by GSWA as within the Lake Mackay Quartzite, **adjacent to a major shear zone and contact with the Dwarf Well Granite**
- Defined by semi-coincident, sub-circular, complex, magnetic and gravity highs with amplitudes of up to **1,400nT** and **+12mGal** respectively → suggests large concentrations of Fe-oxides¹
- Depths to the tops of the shallowest high-density sources are approximately **200-300m** below surface
- Soil geochemical anomalism up to **313ppm Cu²** from a small ferruginous outcrop NW of the sand covered anomaly
- Additional gravity completed in December 2021 along with existing **drill-ready targets**

Urmia – Magnetic and Gravity Responses



Urmia Prospect with WAI Tenure, TMI RTP Magnetics, and Historic Drillhole and Historic Rock Chip Samples¹



Urmia Prospect with WAI Tenure, Residual Gravity image over regional Bouguer Gravity image and Historic Drillhole

¹ Beadell Resources Ltd WAMEX Report A86251

² Refer to the WAI Prospectus, Appendix B dated 29 November 2021 for further details Meteoric completed 39 samples returning an average Cu of 20ppm

Capabilities and Infrastructure

- **Track record of successfully operating** in the West Arunta region
- Regional exploration activity offers an **important support base with regular supply runs** and charter flights
- New mobile coverage base station installed at Kiwirrkurra in 2021 to provide **mobile coverage and reliable communications**



Social License to Operate

- **Local communities are highly supportive** of exploration activities in the region
- WA1 team has **long-standing relationships** with Traditional Owners since 2014
- **Intimate understanding of the processes** involved to enable exploration activities to be completed in the region





Madura and Hidden Valley Projects

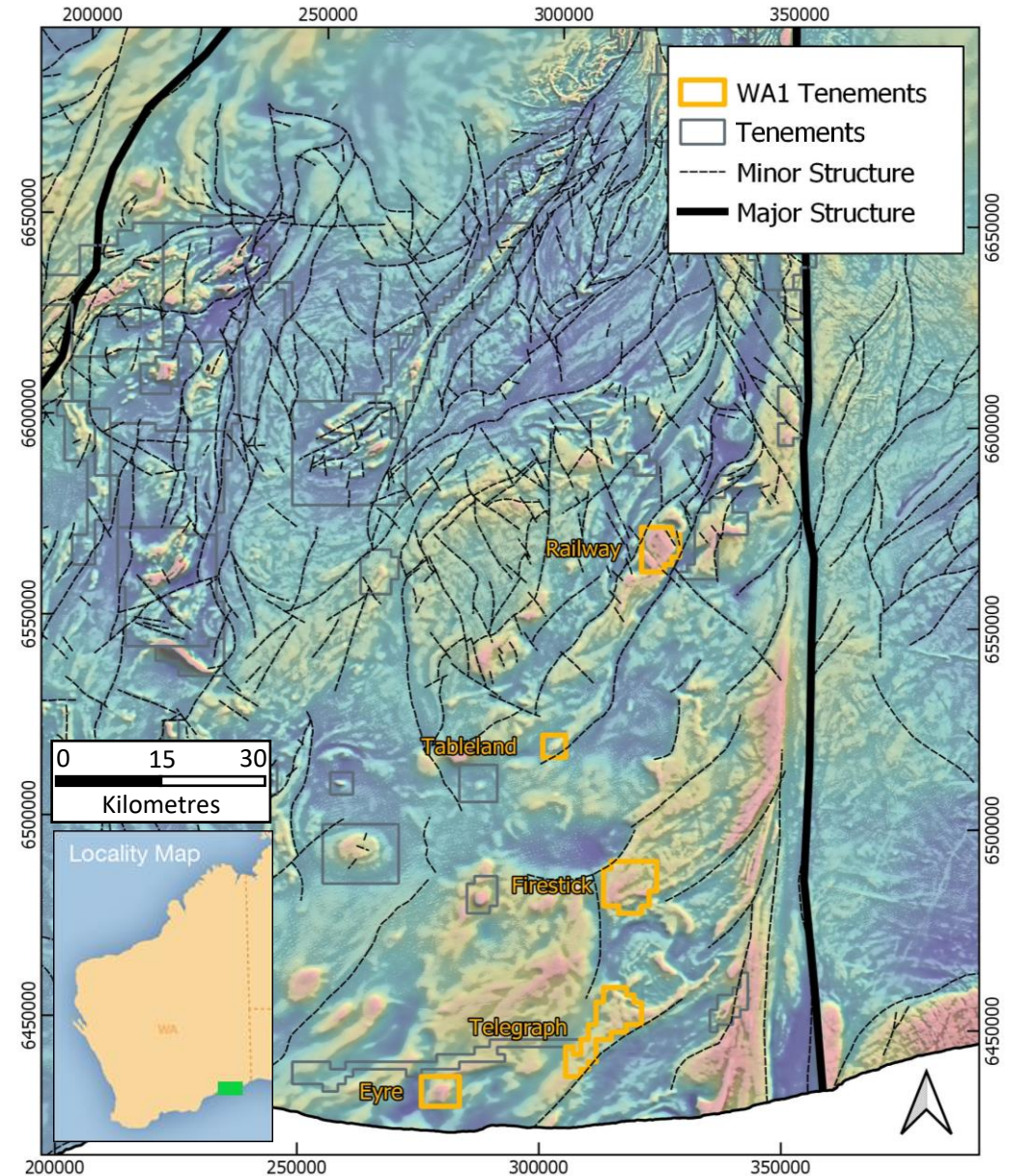
Western Australia | 100%-owned, no private royalties

- **The Madura Project has potential for gold-copper mineralisation of an IOCG affinity with almost no historic exploration activity**
- **The Hidden Valley Project is considered prospective for PGE-Copper-Nickel mineralisation with interpreted intrusive bodies never adequately tested**

Madura Project

- The Mundrabilla Crustal Element (MCE) is bound to the east and west by the Mundrabilla Lineament and the Albany-Fraser Orogen, respectively
- Tenements sit **proximate to a major NE trending structure** and interpreted felsic intrusions which contain coincident high gravity and magnetic anomalies
- A government funded seismic and magnetotelluric traverse from the MCE to the Gawler Craton in South Australia has **provided important insight into the crustal architecture of the region**
- GSWA stratigraphic holes intersected basement between 250m and 440m¹

Regional Geological Setting



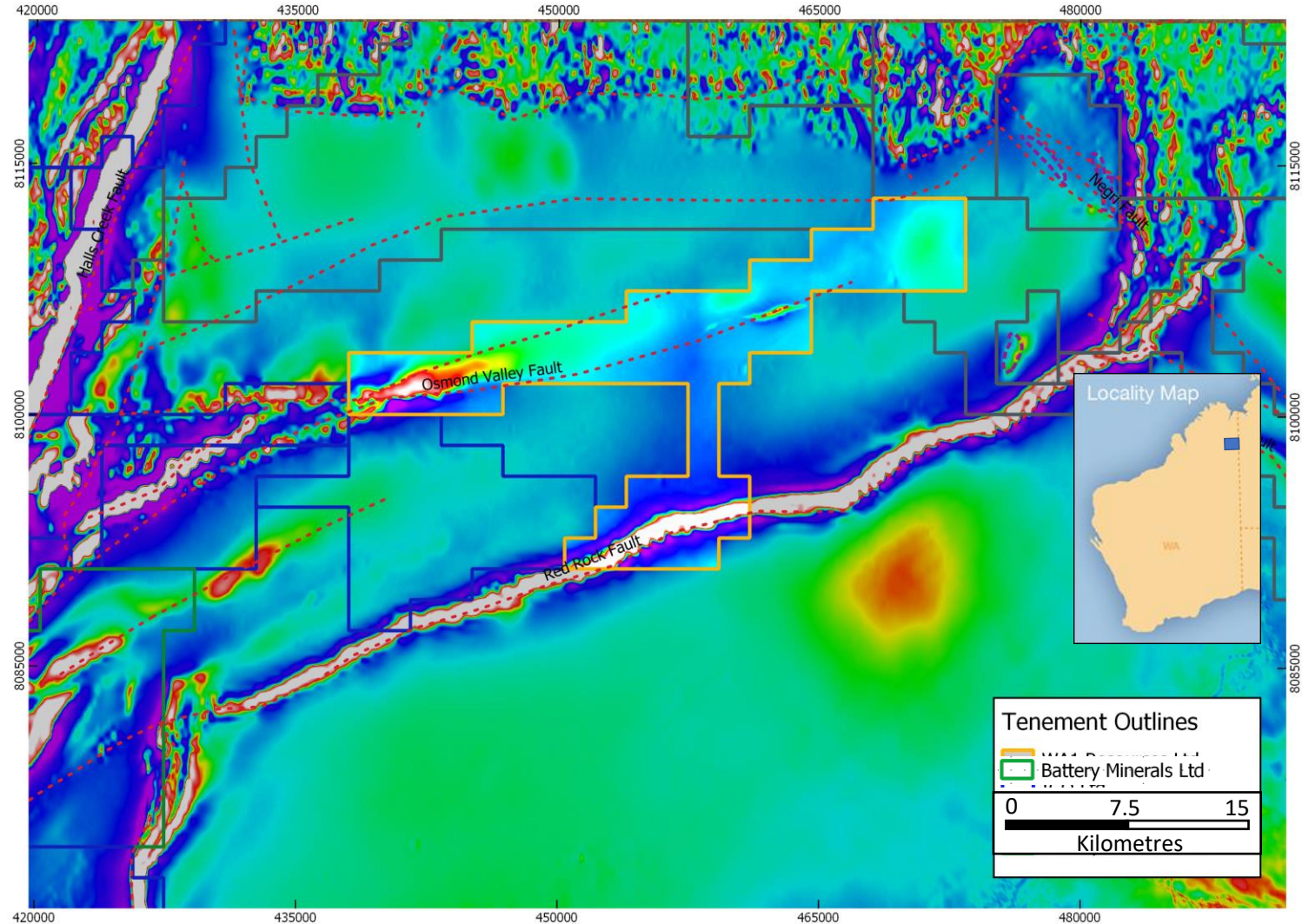
Regional magnetics with structural interpretation (source: GSWA and Spaggiari et al., 2020, compiled by WA1)

¹ Source: WAMEX Report 92104, GSWA stratigraphy drill holes

Hidden Valley Project

- The Hidden Valley Project covers an eastern splay of the Halls Creek Orogen, along strike from IGO's Osmond Project
- The Project contains **36km of the Osmond Valley Fault and is prospective for Ni-Cu occurrences**
- The area, although identified in the 1970's as highly prospective, has been **tightly held but remains underexplored for Ni sulphides** and has not been subject to modern-day electromagnetic surveys
- Database compilation along with reprocessing of all available data currently being undertaken by industry-leading Resource Potentials

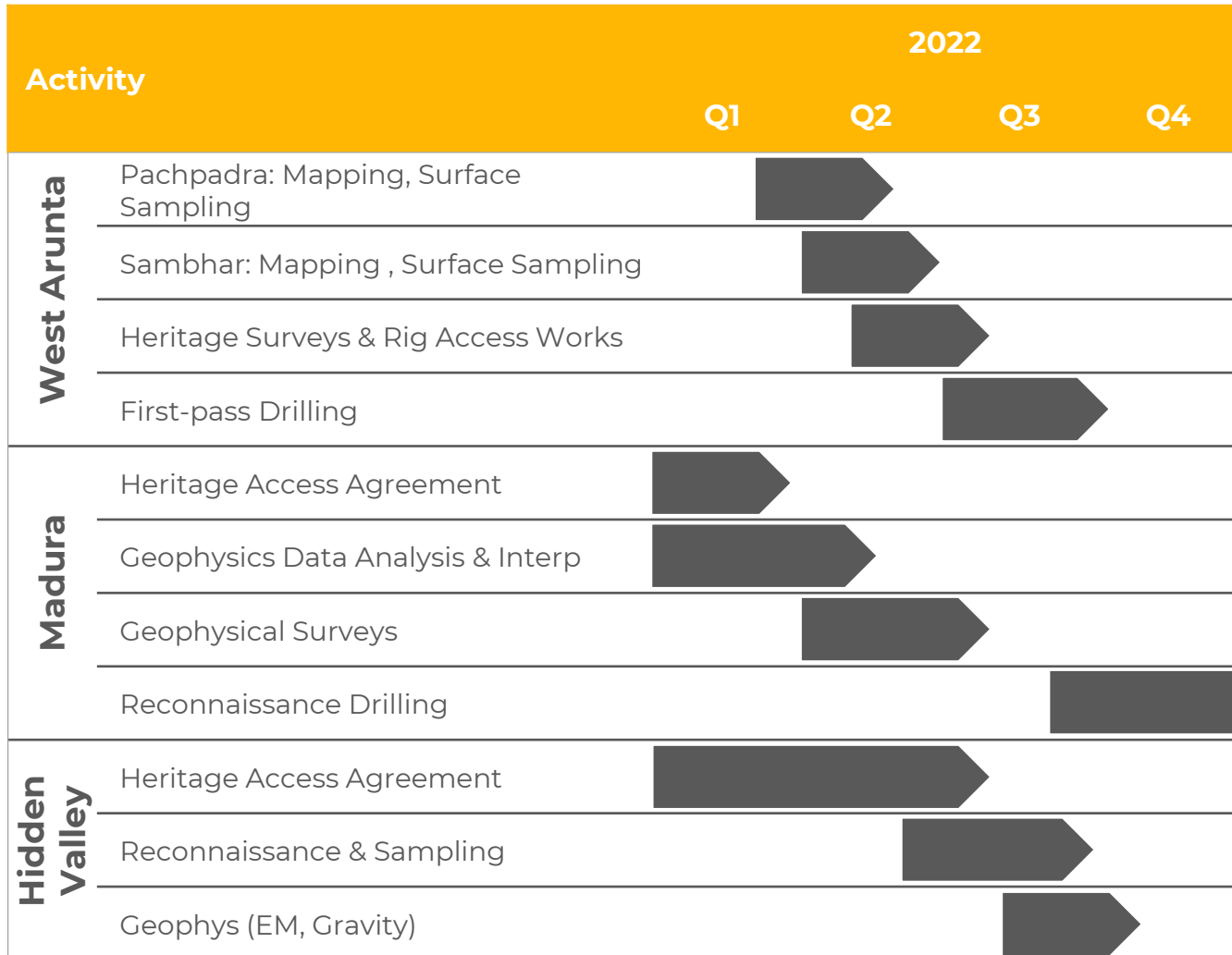
Hidden Valley Regional Tenure



Hidden Valley Project with current tenure over TMIRTP image, structures and mapped mafic intrusions

First 12 Months of Exploration

Indicative Timeline of Proposed Activities¹



Project Tenement Locations

¹ Activities are indicative only and may change without notice as business priorities are adjusted based on exploration results. The size of the activity block is to represent the uncertainty with regard to timing of activities. Refer to the WA1 Prospectus dated 29 November 2021 for further details and to the Forward-Looking Disclaimer

WA'S Mission

To discover a Tier 1 deposit in WA's unexplored regions and create value for all stakeholders



01 Tier 1 targets

First-mover into WA's unexplored regions



02 Premier jurisdiction

WA is a highly attractive mining jurisdiction



03 Proven leadership

Successful track record of raising capital and exploring in WA's most remote regions



04 Social licence to operate

Long-standing relationships with Traditional Owners and local communities



05 Future facing commodities

Strategic focus on metals essential for a clean energy future



WAI Resources Ltd

2C Loch Street, Nedlands
Western Australia 6009

Investors

Paul Savich
Managing Director
E: psavich@wai.com.au
T: +61 8 6478 7866

Media

Michael Vaughan / Andrew Edge
Fivemark Partners
E: michael.vaughan@fivemark.com.au
T: +61 422 602 720 / +61 410 276 744