

VIKING INTERSECTS BONANZA GRADES UP TO 36G/T AU IN FIRST BEDROCK DRILLING AT JANA'S REWARD TARGET

- Potential for two new parallel mineralised structures identified & open in all directions
- New shallow high-grade results include:
 - VKRC0057: 1m at 36.49g/t Au from 17m
 - VKRC0053: 1m at 17.84g/t Au from 16m
- The Company eagerly awaits assays for the remaining 2 holes at the Jana's Reward target, 1.5km to the NNW of the historic high-grade First Hit gold mine
- 38 holes from the 71 hole, 6,723m drill programme now reported with the remaining results expected in the March quarter
- Wireframing of the First Hit structure continues along the 1.5km strike drill tested¹ in preparation for the results from the First Hit South target
- Field trip planned for mid-March to review the ground in context of the results received

Viking Mines Limited (ASX: VKA) ("Viking" or "the Company") is excited to update the market on the assays received from 9 of the 11 holes drilled at the Jana's Reward target as part of the 71-hole, 6,723m RC Drilling Programme at the First Hit Project ("First Hit" or "the Project"), 50km west of Menzies in the WA Goldfields.

These assay results bring the total number of holes reported from the December quarter drill programme to 38 (54% of the total 71 holes drilled).

New high-grade assays received as part of the recent drilling programme include:

- VKRC0057: 1m at **36.49g/t** Au from 17m
- VKRC0053: 1m at **17.83g/t** Au from 16m

These high-grade gold intersections at the Jana's Reward target (Figure 1) are hosted in a newly identified structural position which is parallel to the First Hit structure (host to the historic high-grade First Hit gold mine and the recently discovered Hilton and Camp 1 shoots¹). This success further supports the Company strategy of identifying additional shoots and mineralised structures outside the limits of the previously defined First Hit mine to provide growth options for shareholders through discovery.

Commenting on the receipt of the Jana's Reward target results, Viking Mines Managing Director & CEO Julian Woodcock said,

"I am extremely excited to have intersected high-grade mineralisation on the First Hit tenure in a new area, parallel to the First Hit structure."

"The Jana's Reward target was identified from a comprehensive geological review of the tenure using the magnetics, gravity and air core drilling data we collected in 2021. The first bedrock testing in this area were drilled in the December quarter RC drill programme and, with these results, has proved successful."

"To encounter >1oz gold grades in the drilling is extremely encouraging and reflects the potential for multiple narrow-vein, high-grade gold occurrences across the First Hit tenure. The intersection of two new



distinct structures at Jana's Reward, which are open in all directions, provides additional opportunities to add to the two shoots identified at First Hit North¹."

"These additional mineralised positions reaffirm the company strategy to identify new high-grade gold resources across the First Hit Project. Viking will add the greatest value to our shareholders through the discovery of new ounces. These results present Viking with further opportunities to achieve this."

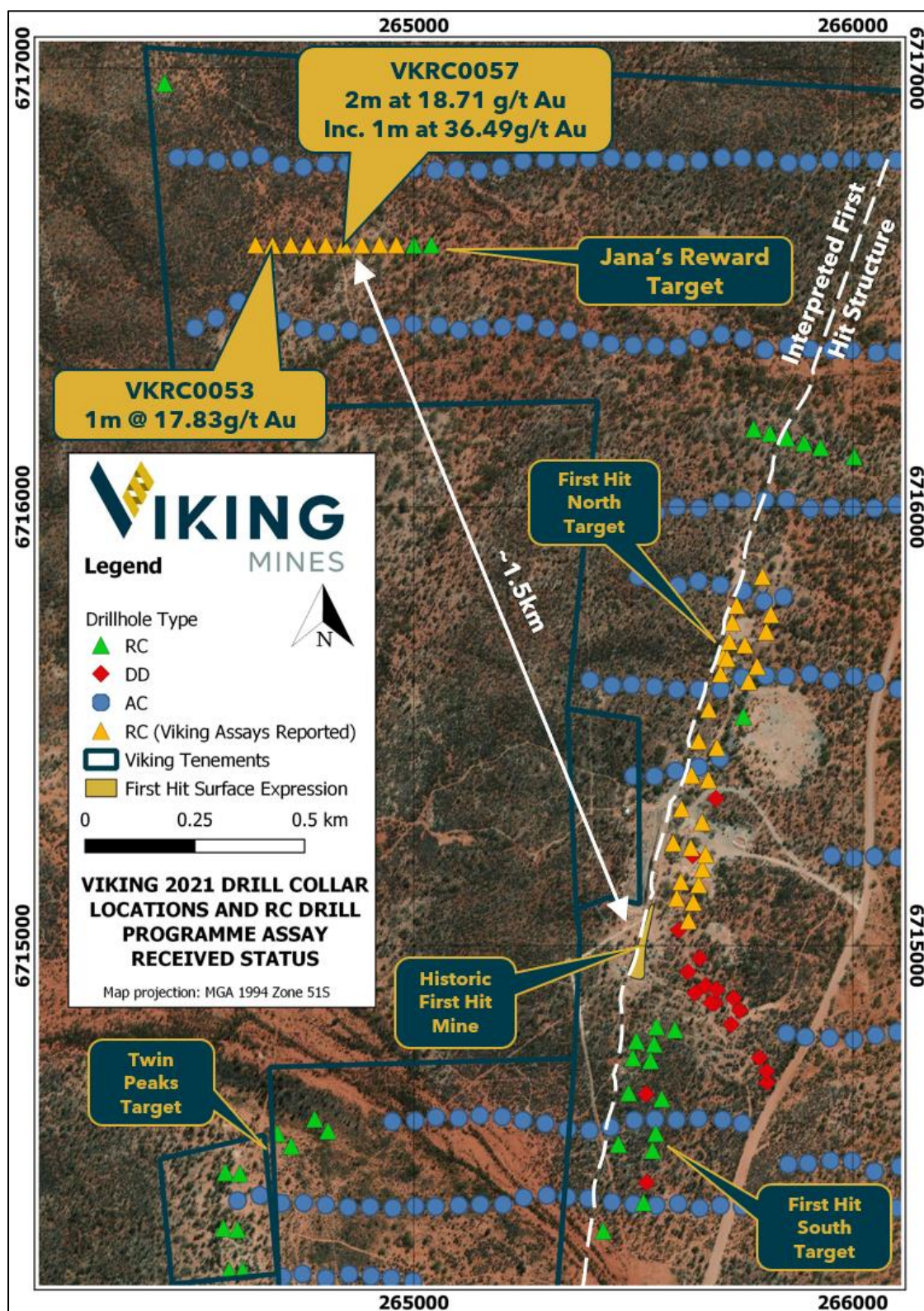


Figure 1; Map showing the location of the Jana's Reward target in relation to the historic high-grade First Hit gold mine. Drillhole collars show the drilling completed by Viking in 2021 by drill type. Orange triangles highlight the drillholes for which assays have been reported from the December quarter RC drill programme with green triangles highlighting holes yet to be reported.



JANA'S REWARD

The Jana's Reward target is located >1.5km to the North North-West of the First Hit Mine (Figure 1) and was identified from the Air-Core (AC) drill programme completed in 2021².

The two main zones of interest are associated with the high-grade results intersected in holes VKRC0053 and VKRC0057 of 1m at 17.84g/t Au and 2m at 18.71g/t Au respectively (reporting above a 0.5g/t Au cut-off).

The drilling programme targeted a series of repeat structures interpreted in the magnetic geophysics that are supported by anomalies identified in the AC drilling (Figure 2) and historic auger sampling results.

To test the target, a drill line of 11 holes was planned in a heel to toe configuration across the structures. Drilling encountered a range of rock types confirming the variability observed in the magnetic stratigraphy (Figure 3).

The assay results received have confirmed broad >15ppb halos in 3 locations that may indicate potential mineralised corridors and structures. This is interpreted using the knowledge gained from the AC & DD programmes completed in 2021². The width and tenor of these anomalies is much greater than those observed at the First Hit structure and provides encouragement for further follow up.

VKRC0053

Drilling intersected a combination of rock types with basalt, intermediate volcanics and pegmatites. The mineralisation occurs near the contact between the basalt and the intermediate volcanic unit and is characterised by a broad gold halo of 15m >40ppb Au (Figure 3). Within this zone two intercepts have been encountered above a 0.5g/t Au cut-off.

- 1m at **17.83g/t** Au from 16m
- 1m at 1.73g/t Au from 29m

The high-grade intercept at 16m downhole occurs within the intermediate volcanic unit and is characterised by increased quartz and shearing of the host rock. Elevated biotite and minor sulphides in the form of pyrite is also present.

VKRC0057

Drilling intersected pre-dominantly basalt host rocks with pegmatites occurring at the top and bottom of the hole. The mineralisation occurs near the top of the hole within the basalt and is characterised by a lower-level broad gold halo of 31m >15ppb Au and a higher-level halo of 16m >40ppb (Figure 3). Within this broad anomalous zone of elevated gold values, two intervals have been encountered above a 0.5g/t Au cut-off grade.

- 1m at 1.15g/t Au from 2m
- 2m at **18.71g/t** Au from 17m
 - Including 1m at **36.49g/t** Au

The high-grade intercept at 17m downhole occurs within a sheared portion of the basalt host rock which is characterised by increased silicification and biotite alteration. This bears similarities to the characteristics of the shear zone encountered at First Hit.

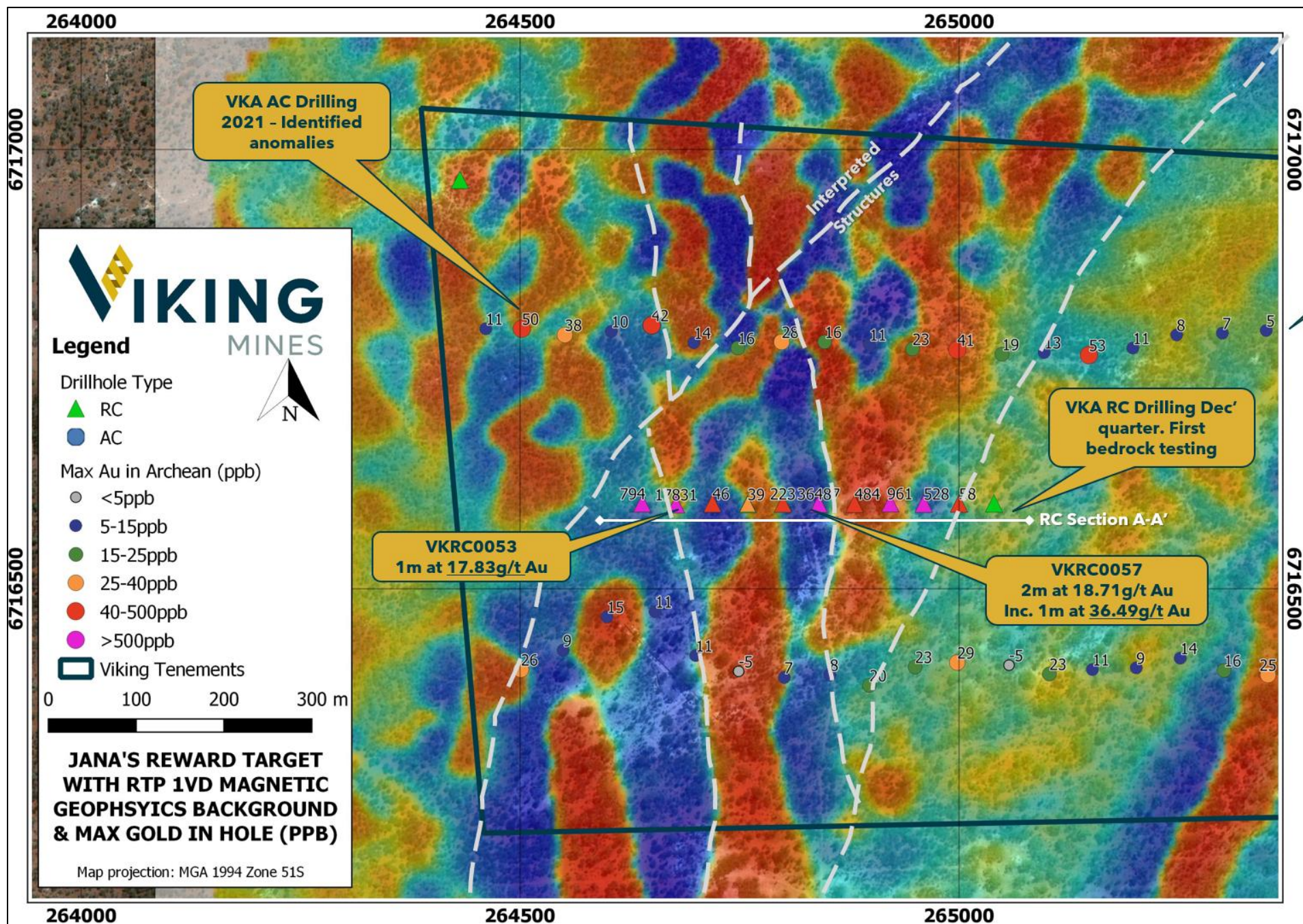


Figure 2; Map showing the Jana's Reward target with the RC drill traverse (section A-A') overlain on the reduced to pole (RTP) 2VD magnetics image. Note the structures identified from the magnetic interpretation and the location of the high-grade intercepts encountered in the RC drilling.

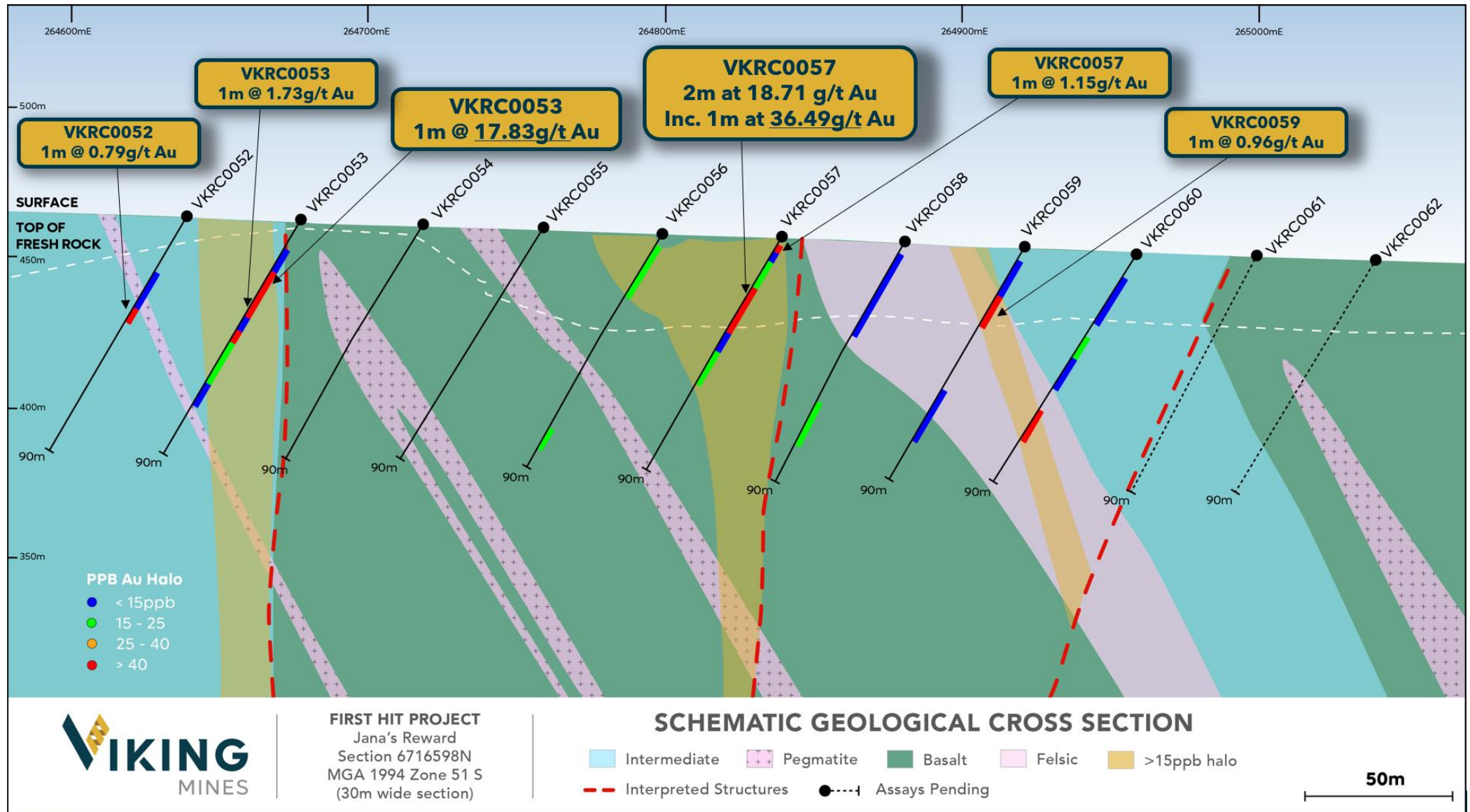


Figure 3; Cross section A-A' (Figure 2) showing drill results at the Jana's Reward prospect (looking North) with high-grade intercepts annotated. Note the variable interpreted geology with mineralisation occurring near contacts or shear zones. >15 ppb halos have been identified in the drilling which is of significance given the low tenor halo observed in the First Hit structure adjacent to high grade-mineralisation drill tested in the historic mine.



RC PROGRAMME STATUS

Lab Turnaround and Results Forecast

The Company continues to communicate with the laboratory regularly has been informed that turnaround time is still expected to be 14 weeks from submission. At this duration, Viking expect the last batch of results from samples delivered to the laboratory in December to be received at the end of the March quarter. Once received, results are QA/QC evaluated and then interpreted prior to reporting to market.

Viking are frustrated by the lengthy delays being encountered across the industry which are out of our control.

NEXT STEPS

The following activities continue to be advanced on the project.

- Ongoing geological modelling and interpretation using the observations made from the drilling to determine the options for follow up activity.
- Field trip planned for mid-March to review the ground around Jana's Reward in context of the results received and assess any outcrop to aid in the interpretation.
- Wireframing of the First Hit structure and geology continues along the 1.5km strike drill tested¹ in preparation for the results from the First Hit South target.
- Diamond drill contractors are being approached to discuss options for drilling diamond tails on selected holes from the RC drill programme.
- Ongoing assessment of results as they are received for the remaining targets.

END

This announcement has been authorised for release by the Board of the Company.

Julian Woodcock
Managing Director and CEO
Viking Mines Limited

For further information, please contact:
Viking Mines Limited
Sarah Wilson - Company Secretary
08 6245 0870

Media & Investor Relations
Citadel-MAGNUS
Cameron Gilenko +61 466 984 953
Jonathan van Hazel +61 411 564 969

¹ ASX Announcement of 14 February 2022 - Viking receives remaining assays for First Hit North target

² ASX Announcement of 19 August 2021 - Viking identifies multiple targets from AC programme

ABOUT VIKING MINES

Viking Mines is a gold focussed company with the **First Hit Project** located 150km NW of Kalgoorlie in Western Australia being the primary asset under exploration.

Viking have an aggressive exploration strategy to explore for high grade gold occurrences and discover ounces along fertile gold structures. The historically mined, First Hit gold mine is the focus of Vikings activity to deliver on this strategy. Rapid advancement and exploration are occurring to explore, discover and develop gold ounces at the Project. The strategy will generate shareholder value through the discovery of new gold resources.

First Hit Project, Western Australia

The **First Hit Project** is centred around the historic high-grade First Hit gold mine situated along the prospective Ida and Zuleika Shear zones in the Eastern Goldfields of Western Australia. The Project incorporates ~28km² of tenements with 6 active Mining and Prospecting licences and 1 Exploration licence under application. At the core of this landholding is a 6.4km² group of contiguous tenements which host the historic First Hit gold mine.

Prior to closure of the First Hit gold mine by Barra Resources in 2002 and at a time of depressed gold prices of US\$ 320/oz, the First Hit mine produced ~30koz ounces of gold at an average grade of ~7.7g/t Au. No modern exploration activity has been conducted in the past 18 years and creates a significant opportunity for Viking. The Company is focused on delivering exploration programmes to test near mine extensions and regional targets around the **First Hit Project** with the objective of defining fertile structures and discovering gold ounces.

Examples of the high-grade nature of the mineralisation previously drilled at First Hit include:

- 4.9m at 64.8g/t Au from 62.1m (FHU045)¹
- 3m at 77.6g/t Au from 224.0m (BFH030)¹
- 4m at 26.1g/t Au from 58.0m (BFH005)¹

The Project area is well serviced by infrastructure and is located 50km west of the sealed Goldfields highway and the township of Menzies. The nearest operating Gold Processing Plant is the Davyhurst Mill 50km to the south, owned and operated by Ora Banda Mining (ASX:OBM). The nearest operating gold mine is the Riverina open pit, located 8km south of the First Hit gold mine, owned by OBM.

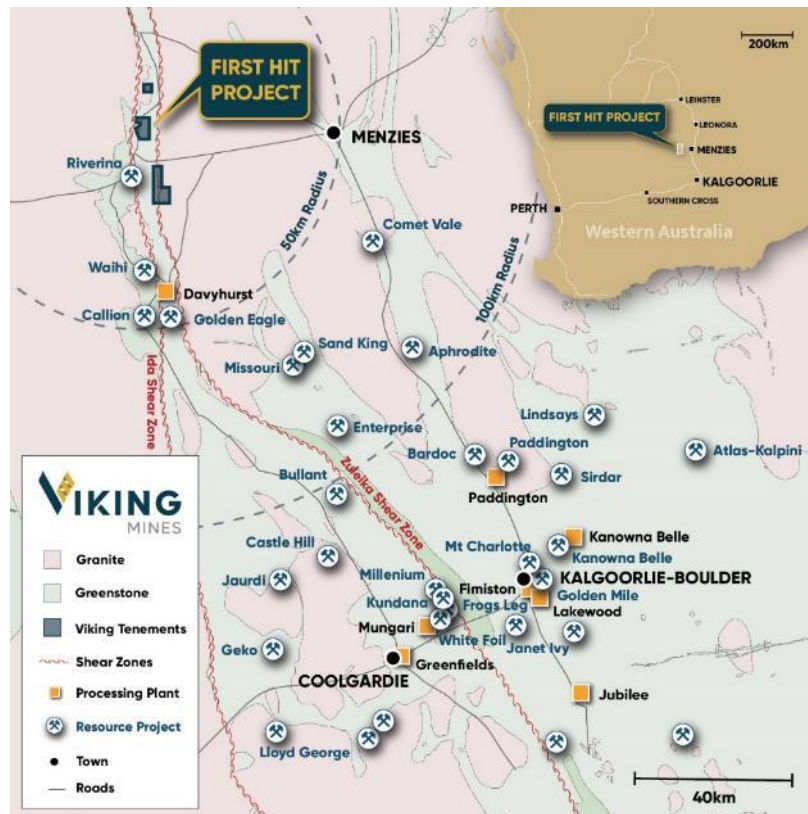
The Company also has projects located in Ghana. Viking is currently undergoing legal proceedings to secure costs and interest associated with the sale of the Akoase project in Ghana.

Forward-Looking Statements

This document may include forward-looking statements. Forward-looking statements include, but are not limited to, statements concerning Viking Mines Limited's planned exploration program and other statements that are not historical facts. When used in this document, the words such as "could," "plan," "estimate," "expect," "intend," "may," "potential," "should," and similar expressions are forward-looking statements. Although Viking Mines Limited believes that its expectations reflected in these forward-looking statements are reasonable, such statements involve risks and uncertainties and no assurance can be given that actual results will be consistent with these forward-looking statements.

Competent Persons Statement

Information in this release that relates to historical Exploration Results on the Western Australian projects is based on information compiled by Mr Ian Stockton, who is a Member of the Australian Institute of Mining and Metallurgy (AusIMM). Mr Stockton is a full-time employee of CSA Global. Mr Stockton is engaged by Viking Mines Ltd as an independent consultant. Mr Stockton has sufficient experience which is relevant to the style of mineralisation and type of deposit under consideration and to the activity being undertaken to qualify as a Competent Person as defined in the 2012 Edition of the 'Australasian Code for Reporting of Exploration Results, Mineral Resources and Ore Reserves'. The exploration results were first reported to ASX on 26 November 2020. The Company confirms that it is not aware of any new information or data that materially affects the information and all material assumptions and technical parameters underpinning the estimates continue to apply and have not materially changed. The Company confirms that the form and context in which the Competent Persons' findings are presented have not been materially modified from the original.



¹ASX announcement dated 26th November 2020



APPENDIX 1 - ANALYTICAL RESULTS

Hole ID	Hole Type	East	North (m)	RL	End of Hole (m)	Azi	Dip (°)	Depth	Downhole Length (m)	Au
		(m) MGA94	MGA94			(°)		From (m)		g/t
VKRC0052	RC	264640	6716598	462	90	270	-60	27	1	0.79
VKRC0053	RC	264680	6716598	461	90	270	-60	16	1	17.83
VKRC0053	RC	264680	6716598	461	90	270	-60	29	1	1.73
VKRC0057	RC	264840	6716598	459	90	270	-60	1	1	1.15
VKRC0057	RC	264840	6716598	459	90	270	-60	17	1	36.49
								18	1	0.93
VKRC0059	RC	264920	6716598	460	90	270	-60	26	1	0.96

APPENDIX 2 - JORC TABLES

COMPETENT PERSONS STATEMENT

Information in this release that relates to new Exploration Results on the Western Australian projects is based on information compiled by Mr Ian Stockton, who is a Member of the Australian Institute of Mining and Metallurgy (AusIMM). Mr Stockton is a full-time employee of CSA Global. Mt Stockton is engaged by Viking Mines Ltd as an independent consultant. Mr Stockton has sufficient experience which is relevant to the style of mineralisation and type of deposit under consideration and to the activity being undertaken to qualify as a Competent Person as defined in the 2012 Edition of the 'Australasian Code for Reporting of Exploration Results, Mineral Resources and Ore Reserves'. Mr Stockton consents to the inclusion in the release of the matters based on his information in the form and the context in which it appears.

JORC Table 1

Criteria	JORC Code explanation	Commentary
Sampling techniques	<i>Nature and quality of sampling (e.g. cut channels, random chips, or specific specialised industry standard measurement tools appropriate to the minerals under investigation, such as downhole gamma sondes, or handheld XRF instruments, etc.). These examples should not be taken as limiting the broad meaning of sampling.</i>	<p><u>Historical Surface Geochemistry</u></p> <p>Several companies have undertaken surface exploration through the history of the tenement including Riverina Gold, Croesus Gold, WMC, Barmingo and Barra Gold. A total of 24,289 samples have been collected, however CSA Global has limited information on these surveys apart from WMC and Barmingo, as described below.</p> <p>WMC mining completed several phases of soil geochemistry between 1990 and 1992 with 2,836 samples collected. This included:</p> <ul style="list-style-type: none"> Stream sediment geochemistry from active streams from contemporary lags within stream beds. 2 kg pan concentrate samples collected from trap sites in active drainage channels.



Criteria	JORC Code explanation	Commentary
		<ul style="list-style-type: none"> • Soil samples collected from 5-15 cm depth or 15-30 cm depth depending on soil thickness and passed through -10#, +36#, -80# or 120# meshes. • Surface soil sampling was sieved through a 6 mm mesh. <p>Barminto Pty Ltd undertook 2 geochemical soil geochemistry programs on the northern part of M30/99 between 1995 and 2000. The first soil survey completed was designed to test areas of residual soil and outcrop, whereas the second soil survey tested areas covered by shallow transported cover. In areas of residual soil and outcrop –80 mesh soil samples were collected on a 50 m x 50 m spaced grid and analysed for gold and arsenic. In areas of transported cover, a preliminary 100 m x 400 m spaced auger soil sampling program was undertaken.</p> <p>The details of the sampling methods and horizons tested for the -80# mesh soil sampling and auger sampling are not described. WMC collected ironstone float rock chip samples (number unknown) across the tenements.</p> <p>Barminto completed undertook rock chip sampling between 1996 and 2002, though the number of samples collected is unknown. Rock chips are described as being collected also taken in areas with cover, laterite development and recent drainage areas for pathfinder and mapping purposes.</p> <p><u>Historical Surface Drilling</u></p> <p>WMC completed 13 RC drill holes and one diamond drill hole during their tenure between 1990 and 1992. No descriptions of the nature of the sampling are available.</p> <p>Barminto completed core and diamond drilling of holes up to 346 metres below surface over the First Hit Project area mineralisation. 21 RC holes were completed north and south along strike from the deposit testing for repeats of the First Hit mineralisation.</p> <p>Percussion samples were split at the drill sites and a 2-5 kg sample was taken for processing and analysis. Probable waste zones were sampled by compositing over 2-4 metres and individual samples were retested if the composites were anomalous.</p> <p>Diamond drill core from was split length ways and half was used for initial analysis whilst the remaining half was used for reference material (kept used for metallurgical testing as required).</p> <p><u>Historical Underground Ore Control and Definition:</u></p> <p>Underground resource definition drilling using drill core provided solid core samples for analysis. During mining operations face channels and production drill holes were used to assist with ore definition and control. Whole core was sampled from UG drill core.</p> <p><u>Historical Underground Face Sampling</u></p> <p>As drives advanced Barminto geologists/technicians carried out rock chip sampling across the exposed drive face. Not all drive advance faces were mapped or sampled. The sampling was treated similarly to a drill hole although typically undertaken as a ‘channel’ rock chip sample along a pre-determined line at right angles to the dip of the vein structures/mineralisation. The face was mapped and significant geological features recorded. The sample line attitude (dip), sample number, sample length, and sample lithology recorded. In addition, the assay result for gold (Au) were recorded following receipt.</p> <p><u>Summary of VKA 2021 RC Exploration Drilling and Sampling</u></p> <p>RC samples are collected at the drill rig during the drilling process. Samples are collected from a cone splitter by placing a calico bag across the two sample apertures as well as a bucket under the splitter to collect the reject. Samples are collected every metre drilled with the reject being dumped on the ground and the two calicoes being placed on top. Each of the calico sample bags are between 2 and 3kg in weight with one being collected for assay at Intertek laboratories in Kalgoorlie for 50g fire assay analysis. The Competent Person considers these sampling methods appropriate for this style of mineralisation.</p>



Criteria	JORC Code explanation	Commentary																																																							
	Include reference to measures taken to ensure sample representivity and the appropriate calibration of any measurement tools or systems used.	<u>Historical Information</u> The entire RC sample was collected and sampled at the drill rig; samples from diamond drilling were subsampled in a core handling facility. Diamond and RC field duplicates were taken on selected intervals within the interpreted mineralised horizons to measure representativity of sample splits. <u>Historical Underground Face Sampling</u> No information is provided in available reports to ascertain the representivity of the face sampling, though some face maps show both selective and mark ups for sampling lines across the lode. No information has been located relating to QAQC procedures such as duplicate sampling, certified standards or laboratory repeats or standards. <u>Summary of VKA 2021 RC Exploration Drilling and Sampling</u> RC sample recovery is monitored for excessive sample loss and recorded to ensure sample representivity. The Competent Person considers these sampling methods appropriate for this style of mineralisation.																																																							
	Aspects of the determination of mineralisation that are Material to the Public Report. In cases where 'industry standard' work has been done this would be relatively simple (e.g. 'reverse circulation drilling was used to obtain 1 m samples from which 3 kg was pulverised to produce a 30 g charge for fire assay'). In other cases more explanation may be required, such as where there is coarse gold that has inherent sampling problems. Unusual commodities or mineralisation types (e.g. submarine nodules) may warrant disclosure of detailed information	<u>Historical Sample Preparation</u> Sample preparation for RC and diamond drilling consisted of coarse crushing a maximum of 3 kg of the submitted sample, pulverising to >85% passing 75 microns and homogenising the pulp for all sample types. 50 g sample sizes were chosen for analysis of gold, with fire assay fusion and detection by atomic absorption spectrometry (AAS). <u>Historical Underground Face Sampling</u> Available reports indicate gold distribution is often erratic and visible Au noted in many face samples. It is not known what steps were taken to address the issue of 'nuggety' Au and sample bias. Face sampling appears to have been both selective and along sampling lines on face maps. <u>Summary of VKA 2021 RC Exploration Drilling and Sampling</u> RC sample analysis: RC drilling was used to obtain a 1m composite sample from which 2-3kg is pulverised to produce a 50g charge for fire assay. Selective 1m samples are collected for multi-element analysis. The Competent Person considers these sampling and analytical methods appropriate for this style of mineralisation.																																																							
Drilling techniques	Drill type (e.g. core, reverse circulation, open-hole hammer, rotary air blast, auger, Bangka, sonic, etc.) and details (e.g. core diameter, triple or standard tube, depth of diamond tails, face-sampling bit or other type, whether core is oriented and if so, by what method, etc.).	<u>Historical Drilling</u> Drillhole data over the First Hit Project area comprised 295 holes, consisting of 187 RC, 3 surface diamond holes, 55 RAB holes, and 50 UG DDH holes, with an additional 504 UG face channel samples (collected as horizontal channels across the ore drive headings). RC samples were collected using a face-sampling, 4.5-inch diameter bit via the inner return tube to a sample splitter. Surface diamond core drilling utilised an NQ2 size (50.6 mm) drill bit. The core diameter for underground drilling could not be obtained from available reports however from the core photos the core size appears to be NQ. <table><tr><th colspan="2">RC</th><th colspan="2">DDH</th><th colspan="2">RAB</th><th colspan="2">UG_DDHL</th><th colspan="2">UG_CNHL</th><th>Total</th></tr><tr><th colspan="2">Reverse Circulation</th><th colspan="2">Surface Diamond Core Drilling</th><th colspan="2">Rotary Air Blast</th><th colspan="2">Underground Diamond Core Drilling</th><th colspan="2">Underground Channel/Face Sampling</th><th>-</th></tr><tr><th>holes & (m)</th><th>% of total</th><th>holes & (m)</th><th>% of total</th><th>holes & (m)</th><th>% of total</th><th>holes & (m)</th><th>% of total</th><th>holes & (m)</th><th>% of total</th><th>-</th></tr><tr><td>187</td><td>23%</td><td>3</td><td>0%</td><td>55</td><td>7%</td><td>50</td><td>6%</td><td>504</td><td>63%</td><td>799</td></tr><tr><td>24,132</td><td>78%</td><td>545</td><td>2%</td><td>2,091</td><td>7%</td><td>2,190</td><td>7%</td><td>2,094</td><td>7%</td><td>31,052</td></tr></table> <u>Summary of VKA 2021 RC Exploration Drilling</u>	RC		DDH		RAB		UG_DDHL		UG_CNHL		Total	Reverse Circulation		Surface Diamond Core Drilling		Rotary Air Blast		Underground Diamond Core Drilling		Underground Channel/Face Sampling		-	holes & (m)	% of total	holes & (m)	% of total	holes & (m)	% of total	holes & (m)	% of total	holes & (m)	% of total	-	187	23%	3	0%	55	7%	50	6%	504	63%	799	24,132	78%	545	2%	2,091	7%	2,190	7%	2,094	7%	31,052
RC		DDH		RAB		UG_DDHL		UG_CNHL		Total																																															
Reverse Circulation		Surface Diamond Core Drilling		Rotary Air Blast		Underground Diamond Core Drilling		Underground Channel/Face Sampling		-																																															
holes & (m)	% of total	holes & (m)	% of total	holes & (m)	% of total	holes & (m)	% of total	holes & (m)	% of total	-																																															
187	23%	3	0%	55	7%	50	6%	504	63%	799																																															
24,132	78%	545	2%	2,091	7%	2,190	7%	2,094	7%	31,052																																															



Criteria	JORC Code explanation	Commentary
		The current RC exploration programme consisted of 72 drill holes for 6,723m. The program commenced at the start of October 2021 and concluded in December 2021.
Drill sample recovery	<i>Method of recording and assessing core and chip sample recoveries and results assessed.</i>	<p><u>Historical Information</u> No documentation regarding the measurement of drill core or RC recoveries could be found in the various reports and tables in the available data. The following comment is extracted from the 2001 First Hit Mine Ore Resource and Mining Report: "Sample recoveries throughout the drilling programs has been excellent (majority greater than 80%) with no major problems encountered" CSA Global briefly reviewed historical drill core stored on site (holes un-labelled) and core photographs of underground drill holes (FHU001, FHU019, FHU041, FHU044, FHU045, FHU046, FHU052, FHU055) and noted that core was in good condition with long intervals of unbroken core and no evidence of poor recoveries. CSA Global through examining core photos is satisfied that core recoveries were adequate though better documentation by the original project owners in this regard would have been more conclusive. <u>Summary of VKA 2021 RC Exploration Drilling and Sampling</u> RC drilling recoveries are visually estimated and recorded as part of geological logging process. The Competent Person considers the recovery measurement methods appropriate for this style of mineralisation.</p>
	<i>Measures taken to maximise sample recovery and ensure representative nature of the samples.</i>	<p><u>Historical Information</u> Sampling techniques were chosen as appropriate for ground conditions to maximise sample recovery. There is no additional record of measures in place to maximise recovery. <u>Summary of VKA 2021 RC Exploration Drilling and Sampling</u> RC drilling sample recovery is monitored to ensure representivity of the samples. Drilling equipment and procedures were suitable to maximise sample recovery and the representative nature of the samples. The Competent Person considers these sampling techniques and measures to ensure representivity appropriate for this style of mineralisation.</p>
	<i>Whether a relationship exists between sample recovery and grade and whether sample bias may have occurred due to preferential loss/gain of fine/coarse material.</i>	<p><u>Historical Information</u> Insufficient information on sample recovery is available to establish whether a relationship between sample recovery and grade exists. <u>Summary of VKA 2021 RC Exploration Drilling</u> RC drilling used standard drilling equipment and procedures that are suitable to maximise sample recovery and the representative nature of the samples. The Competent Person considers there to be a potential sampling bias related to the recovery/sampling at the First Hit mineralisation with RC drilling, however the method is suitable for the early stages of exploration.</p>
Logging	<i>Whether core and chip samples have been geologically and geotechnically logged to a level of detail to support appropriate Mineral Resource estimation, mining studies and metallurgical studies.</i>	<p><u>Historical Information</u> All RC and diamond drillholes were geologically logged to an industry standard appropriate for the mineralisation present at the project. All RC drill chip samples were geologically logged at 1 m intervals from surface to the end of each drillhole. Diamond core was photographed, and RC chips were retained in chip trays for future reference. Ausdrill completed three, NQ2 diamond drill holes at the First Hit deposit for geotechnical assessment prior to mining. The holes were designed in consultation with Golder Associates Pty Ltd and were targeted into the mineralised zones and continued on average 30 m into the footwall to assess the likely ground conditions for the decline and ore accesses. Approximately 70 metres of core was drilled for each hole allowing the hanging wall, the ore zone and the footwall zone to be assessed. Golder Associates Pty Ltd were commissioned to undertake the geotechnical assessment.</p>



Criteria	JORC Code explanation	Commentary
		<p>The Competent Person considers that the level of detail is sufficient for geotechnical studies.</p> <p><u>Historical Underground Face Sampling</u></p> <p>The underground face samples were used to guide mine development. Due to the lack of information regarding the quality of the face samples these should be regarded as qualitative only and can only be used to provide an indicative guide as the presence or otherwise of mineralisation.</p> <p><u>Summary of VKA 2021 RC Exploration Drilling and Sampling</u></p> <p>RC sample logging of rock chips samples from drill cuttings are undertaken as a first pass indication of potential gold and multi-element anomalism. Samples of rock chips from drill cuttings were logged by the geologist in the field, for parameters including, depth, colour, grain size, weathering, lithology, alteration, rock fabric and the presence of minerals potentially related to mineralisation including quartz and sulphides.</p> <p>The Competent Person considers the logging methods appropriate for this style of mineralisation.</p>
	<i>Whether logging is qualitative or quantitative in nature. Core (or costean, channel, etc.) photography.</i>	<p><u>Historical Information</u></p> <p>Lithological logging is qualitative in nature. Logged intervals were compared to the quantitative geochemical analyses to validate the logging.</p> <p>The Competent Person considers that the availability of qualitative and quantitative logging has appropriately informed the geological modelling, including weathering and oxidation, water table level and rock type.</p> <p><u>Historical Underground Face Sampling</u></p> <p>The logging of the underground face samples is qualitative only.</p> <p><u>Summary of VKA 2021 RC Exploration Drilling and Sampling</u></p> <p>Logging RC drilling is qualitative in nature. RC samples were photographed in chip trays.</p> <p>The Competent Person considers the logging methods appropriate for this style of mineralisation.</p>
	<i>The total length and percentage of the relevant intersections logged.</i>	<p><u>Historical Information</u></p> <p>The total length of all drilling was geologically logged.</p> <p><u>Historical Underground Face Sampling</u></p> <p>The underground face sampling hardcopy plans indicate in the majority of cases the face was sketch mapped and the 'channel' geologically logged with the sample length or interval recorded.</p> <p><u>Summary of VKA 2021 RC Exploration Drilling and Sampling</u></p> <p>All RC drilling was geologically logged for lithology, alteration and mineralisation including panning for coarse gold typical of the mineralised system.</p> <p>The Competent Person considers the logging methods appropriate for this style of mineralisation.</p>
Subsampling techniques and sample preparation	<i>If core, whether cut or sawn and whether quarter, half or all core taken.</i>	<p><u>Historical Information</u></p> <p>Diamond core was cut into two halves using a diamond core saw for surface drilling. One of the halves was placed into a numbered calico bag, which was tied and placed in a plastic/poly-weave bags for assaying.</p> <p>Underground DDH samples were whole core sampled.</p> <p><u>Summary of Current VKA 2021 RC Exploration Drilling and Sampling</u></p> <p>No Diamond drilling is being undertaken in the current drilling program</p>
	<i>If non-core, whether riffled, tube sampled, rotary split, etc. and whether sampled wet or dry.</i>	<p><u>Historical Information</u></p> <p>RC samples were collected via a splitter to yield sub samples of approximately 3 kg from a 1 m downhole sample length. Expected waste zones were initially sampled as 2 m or 4 m composites and later resampled at 1 m intervals if anomalous assay results were returned. Re-sampling was undertaken using the spear sampling method</p>



Criteria	JORC Code explanation	Commentary
		<p><u>Summary of VKA 2021 RC Exploration Drilling and Sampling</u> All RC samples were collected via a cone splitter to yield dry sub samples of approximately 3kg from a 1 m downhole sample length. Two sub-samples are collected from every 1m downhole interval with the second sub sample being collected if re-sampling is required at a later date. Gold panning was undertaken as part of the logging process to identify visible gold to assist with ongoing drill targeting.</p>
	For all sample types, the nature, quality and appropriateness of the sample preparation technique.	<p><u>Historical Information</u> The Competent Person considers the historical methods described as appropriate for this style of mineralisation.</p> <p><u>Summary of Current VKA 2021 RC Exploration Drilling and Sampling</u> The Competent Person considers the current methods and processes as described in previous sections as appropriate for this style of mineralisation.</p>
	Quality control procedures adopted for all subsampling stages to maximise representivity of samples.	<p><u>Historical Information</u> The following is described from the First Hit Mine Ore Resources and Mining Report, 2001 and indicates duplicates were used to inform the resource model. “Several samples were often submitted for each positive assay. These were taken on site and submitted to the same laboratory under a different sample number and then assayed using the same technique. An average of these results for each interval has been used within the ore resource calculations”.</p> <p>CSA Global does not consider the above process to be suitable as a form of QAQC. The lack of CRMs is not industry practice. CSA Global recommends the application of industry standard QAQC to all future drilling programs.</p> <p><u>Historical Underground Face Sampling</u> CSA Global were unable to establish QAQC processes involving the use of CRM, including blanks and standards.</p> <p><u>Summary of VKA 2021 RC Exploration Drilling and Sampling</u> Duplicate sub sampling has been applied to the current RC drill programmes (see details below). Selective panning for gold to assist with targeting was also undertaken. The Competent Person considers the current methods of sampling as described as appropriate for this style of mineralisation.</p>
	Measures taken to ensure that the sampling is representative of the in-situ material collected, including for instance results for field duplicate/second-half sampling.	<p><u>Historical Information</u> See comments above regarding the use of duplicates by Barminco. Several samples were often submitted for each positive assay. These were taken on site and submitted to the same laboratory under a different sample number and then assayed using the same technique. An average of these results for each interval has been used within the ore resource calculations.</p> <p><u>Historical Underground Face Sampling</u> CSA Global were unable to establish representivity of the face samples or the use of field duplicates or assaying of sample splits.</p> <p><u>Summary of Current 2021 RC Exploration Drilling and Sampling</u> Field duplicates were collected from the cone splitter for every metre drilled. The second sample was selected as a duplicate on an ad-hoc basis either by trying to obtain a roughly 1:25 sample ratio or if the geologist identified a particular sample to be used as a duplicate. The Competent Person considers the current methods and processes described as appropriate for this style of mineralisation.</p>
	Whether sample sizes are appropriate to the grain size of the material being sampled.	<p><u>Historical Information</u> The First Hit Project mineralisation and targets within the associated tenements are expected to be coarse grained and nuggety gold. Further exploration will need to consider the grain size of gold and distribution of particles. No previous petrology reports were found, and future work will include petrological studies in the early stage of exploration.</p> <p><u>Historical Underground Face Sampling</u></p>



Criteria	JORC Code explanation	Commentary
		<p>No information is available re sample size. The mineralisation is known to include nuggety visible Au.</p> <p><u>Summary of VKA 2021 RC Exploration Drilling and Sampling</u></p> <p>The RC drilling is aiming to detect gold anomalism and the sample sizes are considered appropriate to the grain size of the material being sampled given the style of mineralisation being targeted. Sampling of prospective horizons by panning is also being undertaken.</p> <p>The Competent Person considers the current methods and processes described as appropriate for this style of mineralisation.</p>
Quality of assay data and laboratory tests	<p><i>The nature, quality and appropriateness of the assaying and laboratory procedures used and whether the technique is considered partial or total.</i></p>	<p><u>Historical Information</u></p> <p>7,865 samples were prepared for Fire Assay and tested by Kalgoorlie Assay Laboratory. There are incomplete records for the remaining 2,150 samples. Fire Assay is considered a total digest and whilst generally appropriate for the type of mineralisation, cyanide bottle roll leach test work may be recommended for exploration should coarse gold be encountered in future exploration.</p> <p><u>Historical Underground Face Sampling</u></p> <p>No information is available with respect to the quality of the face samples.</p> <p>The analytical techniques to be used for the 2021 RC drilling programme samples include:</p> <p>Fire Assay method (50g charge) for gold, four acid digest with ICP-MS/OES finish for 60 elements, and pXRF method for 34 elements. The analytical technique for Au is considered total with the rest being mostly partial.</p> <p>The Competent Person considers the current methods and processes described as appropriate for this style of mineralisation.</p>
	<p><i>For geophysical tools, spectrometers, handheld XRF instruments, etc., the parameters used in determining the analysis including instrument make and model, reading times, calibrations factors applied and their derivation, etc.</i></p>	<p><u>Historical Information</u></p> <p>No non-destructive tools or devices are recorded as being used.</p> <p><u>Summary of VKA 2021 Exploration AC and Diamond Drilling</u></p> <p>A pXRF survey has been completed in the field using a handheld instrument by Bruker, the S1 Titan 800 model. The measurements were completed in three ranges (Exploration Mode) with 20 counts per range. Autocalibration measurements were used for reading checks and adjustments.</p> <p>The Competent Person considers the current methods and processes described as appropriate for this style of mineralisation.</p>
	<p><i>Nature of quality control procedures adopted (e.g. standards, blanks, duplicates, external laboratory checks) and whether acceptable levels of accuracy (i.e. lack of bias) and precision have been established.</i></p>	<p><u>Historical Information</u></p> <p>CSA Global has not been able to obtain the original assay certificates for exploration and resource drilling on the First Hit Project tenements.</p> <p>As recorded in the QC procedure section duplicates were used as a way of informing the resource model. For future exploration it is recommended that standard CRMS, blanks and duplicates be used for QAQC.</p> <p><u>Underground Face Sampling</u></p> <p>No information is available with respect to QAQC procedures.</p> <p><u>Summary of VKA 2021 RC Exploration Drilling and Sampling</u></p> <p>The QAQC procedures for the RC drilling program consist of the analyses of certified standards, duplicates and blanks all at 4% so QAQC samples consists of 12% of the program.</p> <p>The Competent Person considers the QAQC described as appropriate for this style of mineralisation.</p>
Verification of sampling and assaying	<p><i>The verification of significant intersections by either independent or alternative company personnel.</i></p>	<p><u>Historical Information</u></p> <p>Due to the samples being sampled and collected 20 years ago, independent verification is difficult and has not been undertaken. CSA Global recommend unpacking the remaining drill core on site and reviewing the geology, alteration, structure and mineralisation.</p> <p><u>Underground Face Sampling</u></p>



Criteria	JORC Code explanation	Commentary
		<p>No independent verification has been undertaken so far, however the hardcopy plan data is being entered into a database, which will facilitate checking of assay data presented on the face sampling plans against that recorded in Barmingo and Barra Resources reports.</p> <p><u>Summary of VKA 2021 RC Exploration Drilling and Sampling</u></p> <p>No independent verification of drilling and sampling, however similar protocols are being applied as per previous RC drilling programs</p> <p>The Competent Person considers the process described as appropriate.</p>
	<i>The use of twinned holes.</i>	<p><u>Historical Information</u></p> <p>No twin drilling has been undertaken; however, significant reported underground development and sampling has verified the information provided by the surface drilling.</p> <p><u>Summary of VKA 2021 RC Exploration Drilling and Sampling</u></p> <p>There are no twinned holes planned in the-Current program-</p> <p>The Competent Person considers the process described as appropriate, though twinning of RC holes with diamond drilling may be appropriate given the visible gold observed in RC samples to avoid potentially overstating the down hole intervals in the RC intervals.</p>
	<i>Documentation of primary data, data entry procedures, data verification, data storage (physical and electronic) protocols.</i>	<p><u>Historical Information</u></p> <p>The data entry, storage and documentation of primary data was completed in Microsoft Access databases and assembled by CSA Global into a central database for future purposes. The majority of the data reviewed by CSA Global has been summarised from primary sources.</p> <p><u>Underground Face Sampling</u></p> <p>No independent verification has been undertaken so far, however the hardcopy plan data is being entered into a database, which will facilitate checking of assay data presented on the face sampling plans against that recorded in Barmingo and Barra Resources reports. The face sampling data is presented as a series of Tables in Barra Resources report – ‘Final Mine Report, 2002’ and submitted to DMIRS.</p> <p><u>Summary of VKA 2021 RC Exploration Drilling and Sampling</u></p> <p>Primary data for drill cuttings, including sample number, depth, colour, grain size, weathering, lithology, alteration, rock fabric and the presence of minerals potentially related to mineralisation including quartz and sulphides, were collected in the field and entered into a protected spreadsheet which was then uploaded into relational database.</p> <p>The Competent Person considers the process described as appropriate</p>
	<i>Discuss any adjustment to assay data.</i>	No adjustments or calibrations have been made to any assay data.



Criteria	JORC Code explanation	Commentary																												
Location of data points	Accuracy and quality of surveys used to locate drillholes (collar and downhole surveys), trenches, mine workings and other locations used in Mineral Resource estimation.	<u>Historical Information</u> All drill hole collars were surveyed by differential global positioning system (DGPS) or by the mine operations survey equipment. The following extract from the 2001 First Hit Mine Ore Resource and Mining report states the following: Down hole surveying of drill holes were undertaken on the majority of holes whilst being drilled. This has enabled only dip readings to be collected as the instrument was used within the drill string. Several programs of downhole surveying using a single shot Eastman camera have been completed for all available holes in the First Hit area and have been incorporated into the database. Where downhole surveys were unavailable due to the collapse of the hole, survey estimates at regular intervals have been applied. These are based on the deviation of the surrounding drill holes. Drill holes greater than 100 m in depth deviated consistently in the azimuth to the southwest (against rotation). The dip angle in most cases steepened and in some of the deeper holes this was quite dramatic. Drill string stabilizers were tried at various times in an attempt to help alleviate this problem, but no consistent results were achieved. <u>Historical Underground Face Sampling</u> The location of face sampled was recorded by mine surveyors. The face samples were used to guide mine development. It is unknown the extent the face sample data was used in Mineral Resource estimates. <u>Summary of VKA 2021 RC Exploration Drilling and Sampling– Surveys</u> The collar positions have been surveyed using a differential GPS with an accuracy of +/-0.5m once drilling of the planned programme was completed. The downhole azimuth and dip were surveyed using a Reflex Easy Gyro tool or an Axis Mining Technology Champ Gyro tool with an accuracy of +/- 1 degree for the azimuth and +/-0.1 degrees for the dip. The Competent Person considers the survey processes as appropriate																												
	Specification of the grid system used.	<u>Historical Information</u> Topographic data for the mine drilling were captured in MGA Zone 51 grid. A local grid has been established at First Hit, which is orthogonal to the known mineralised trend of the area (020 degrees). The grid orientation is at 290 degrees magnetic which is optimal for this deposit. The conversion from local to AMG 84 grid is presented in the table below. <table><tr><td></td><td>Local</td><td></td><td></td><td>AMG 84</td><td></td><td></td></tr><tr><td></td><td>Northing</td><td>Easting</td><td>RI</td><td>Northing</td><td>Easting</td><td>RI</td></tr><tr><td>Point1 (BFH008)</td><td>40020</td><td>10000</td><td>448.991</td><td>6714690.694</td><td>265409.570</td><td>448.991</td></tr><tr><td>Point2 (BFH010)</td><td>40201.7</td><td>10000</td><td>442.716</td><td>6714861.448</td><td>265471.014</td><td>442.716</td></tr></table> <u>Summary of VKA 2021 Grid datum</u> The GDA94 Zone 51 datum is used as the coordinate system.		Local			AMG 84				Northing	Easting	RI	Northing	Easting	RI	Point1 (BFH008)	40020	10000	448.991	6714690.694	265409.570	448.991	Point2 (BFH010)	40201.7	10000	442.716	6714861.448	265471.014	442.716
		Local			AMG 84																									
	Northing	Easting	RI	Northing	Easting	RI																								
Point1 (BFH008)	40020	10000	448.991	6714690.694	265409.570	448.991																								
Point2 (BFH010)	40201.7	10000	442.716	6714861.448	265471.014	442.716																								
Quality and adequacy of topographic control.		<u>Historical topographic Information</u> Historical survey work for the First Hit Mine was conducted via differential global positioning system (DGPS) and is appropriate as an industry standard method. A topographic surface used for coding the block model was built from a system using a detailed drone survey. The Competent Person considers that the surface is suitable for future exploration activities. <u>Summary of VKA 2021 RC Exploration Drilling and Sampling</u> The DTM and collar locations for the RC drilling were located by differential GPS. The Competent Person considers the survey processes as appropriate.																												



Criteria	JORC Code explanation	Commentary
Data spacing and distribution	<i>Data spacing for reporting of Exploration Results.</i>	<p><u>Historical Information</u> The majority of the data on the tenements is surface geochemistry which are adequate for defining anomalies for future exploration.</p> <p><u>Summary of VKA 2021 RC Exploration Drilling and Sampling</u> RC drilling was undertaken on an irregular 40x40m, or 80x40m or 120x40m spacing to test specific targets and extensions of mineralisation identified in historical drill holes. The Competent Person considers the data spacing appropriate for reporting exploration results.</p>
	<i>Whether the data spacing and distribution is sufficient to establish the degree of geological and grade continuity appropriate for the Mineral Resource and Ore Reserve estimation procedure(s) and classifications applied.</i>	<p><u>Historical Information</u> Existing drilling on the periphery of historically mined areas is suitable for defining additional drill targets laterally, down dip and in the near surface environment.</p> <p><u>Summary of VKA 2021 RC Exploration Drilling and Sampling</u> The spacing of the RC drilling is considered appropriate for this type of deposit and no resources are currently being estimated.</p>
	<i>Whether sample compositing has been applied.</i>	<p><u>Historical Information</u> Sample compositing was applied in initial exploration drilling at the First Hit Project and always followed up by detailed sampling at 1 m interval, or less for core drilling.</p> <p><u>Summary of VKA 2021 RC Exploration Drilling and Sampling</u> No sample compositing has been applied for RC drill samples. The Competent Person considers the sampling to be appropriate for this stage of exploration.</p>
Orientation of data in relation to geological structure	<i>Whether the orientation of sampling achieves unbiased sampling of possible structures and the extent to which this is known, considering the deposit type.</i>	<p><u>Historical Information</u> The regular spaced drilling on consistent sections, and the orientations orthogonal to the strike of the lodes, has provided consistent support to intersections of mineralisation to eliminate any bias or influence of hole angles on grades.</p> <p><u>Summary of VKA 2021 RC Exploration Drilling and Sampling</u> RC drilling is predominately orthogonal to the strike of the structural trends and mineral system. Understanding the geometry of the mineralised trends is managed through incorporating as much of the underground mapping and historical drilling as possible as well as regional data sets. Additionally, all RC holes are oriented to understand and measure the variability of structures and mineralisation. The Competent Person considers the processes as appropriate.</p>
	<i>If the relationship between the drilling orientation and the orientation of key mineralised structures is considered to have introduced a sampling bias, this should be assessed and reported if material.</i>	<p><u>Historical Information</u> No relationship has been noted between drillhole orientation and mineralisation.</p> <p><u>Summary of VKA 2021 RC Exploration Drilling and Sampling</u> At this stage of exploration, RC drilling is considered by the Competent Person not to have introduced a sampling bias. However, as drilling continues, this will need to be reviewed as coarse gold has been observed in core and RC drilling which may require further review.</p>



Criteria	JORC Code explanation	Commentary
Sample security	<i>The measures taken to ensure sample security.</i>	<p><u>Historical Information</u> The competent person is unaware of measures taken to ensure sample security during past exploration. Chain of custody procedures are recommended for future exploration.</p> <p><u>Summary of VKA 2021 RC Exploration Drilling and Sampling</u> Samples derived from the RC drilling were collected and stored by site personnel at a designated lay-down area on site. These samples were transported to Intertek laboratories in Kalgoorlie by site personnel or Pitbull transport. The Competent Person considers the processes for sample security as appropriate.</p>
Audits or reviews	<i>The results of any audits or reviews of sampling techniques and data.</i>	<p><u>Historical Information</u> No external audit of sampling techniques and data could be sourced from the documents provided to CSA Global.</p> <p><u>Summary of VKA 2021 RC Exploration Drilling and Sampling</u> No external audits or reviews have yet been undertaken on the sampling data however the competent person is satisfied with the processes employed. The analytical data have yet to be received.</p>

JORC 2012 Table 1 Section 2 - Reporting of Exploration Results

Criteria	JORC Code explanation	Commentary																																							
Mineral tenement and land tenure status	<i>Type, reference name/number, location and ownership including agreements or material issues with third parties such as joint ventures, partnerships, overriding royalties, native title interests, historical sites, wilderness or national park and environmental settings.</i>	<p><u>Tenements and location</u> The First Hit Project tenements are located approximately 50 km due west of the town of Menzies, Western Australia on the Menzies (05) 1:250,000 and Riverina 3038 1:100,000 topographic map sheets, and include:</p> <table> <tr> <th>Tenement</th><th>Status</th><th>Holder</th></tr> <tr> <td>M30/0091</td><td>LIVE</td><td>Red Dirt Mining Pty Ltd</td></tr> <tr> <td>M30/0099</td><td>LIVE</td><td>Red Dirt Mining Pty Ltd</td></tr> <tr> <td>P30/1125</td><td>LIVE</td><td>Red Dirt Mining Pty Ltd</td></tr> <tr> <td>P30/1126</td><td>LIVE</td><td>Viking Mines Ltd</td></tr> <tr> <td>P30/1137</td><td>LIVE</td><td>Red Dirt Mining Pty Ltd</td></tr> <tr> <td>P30/1144</td><td>LIVE</td><td>Red Dirt Mining Pty Ltd</td></tr> <tr> <td>E29/1133</td><td>LIVE</td><td>Viking Mines Ltd</td></tr> <tr> <td>E29/1131</td><td>PENDING</td><td>Viking Mines Ltd</td></tr> <tr> <td>E30/0529</td><td>PENDING</td><td>Viking Mines Ltd</td></tr> <tr> <td>P29/2652</td><td>PENDING</td><td>Viking Mines Ltd</td></tr> <tr> <td>E29/1169</td><td>PENDING</td><td>Viking Mines Ltd</td></tr> <tr> <td>E29/1160</td><td>PENDING</td><td>Viking Mines Ltd</td></tr> </table>	Tenement	Status	Holder	M30/0091	LIVE	Red Dirt Mining Pty Ltd	M30/0099	LIVE	Red Dirt Mining Pty Ltd	P30/1125	LIVE	Red Dirt Mining Pty Ltd	P30/1126	LIVE	Viking Mines Ltd	P30/1137	LIVE	Red Dirt Mining Pty Ltd	P30/1144	LIVE	Red Dirt Mining Pty Ltd	E29/1133	LIVE	Viking Mines Ltd	E29/1131	PENDING	Viking Mines Ltd	E30/0529	PENDING	Viking Mines Ltd	P29/2652	PENDING	Viking Mines Ltd	E29/1169	PENDING	Viking Mines Ltd	E29/1160	PENDING	Viking Mines Ltd
Tenement	Status	Holder																																							
M30/0091	LIVE	Red Dirt Mining Pty Ltd																																							
M30/0099	LIVE	Red Dirt Mining Pty Ltd																																							
P30/1125	LIVE	Red Dirt Mining Pty Ltd																																							
P30/1126	LIVE	Viking Mines Ltd																																							
P30/1137	LIVE	Red Dirt Mining Pty Ltd																																							
P30/1144	LIVE	Red Dirt Mining Pty Ltd																																							
E29/1133	LIVE	Viking Mines Ltd																																							
E29/1131	PENDING	Viking Mines Ltd																																							
E30/0529	PENDING	Viking Mines Ltd																																							
P29/2652	PENDING	Viking Mines Ltd																																							
E29/1169	PENDING	Viking Mines Ltd																																							
E29/1160	PENDING	Viking Mines Ltd																																							



Criteria	JORC Code explanation	Commentary
		<p><u>Third Party Interests</u></p> <p>The nickel rights to M30/99 & M30/91 are held by Riverina Resources Limited and Barra Resources Limited. P30/1126 is subject to a 1% Net Smelter Royalty with Australia Emerald Menzies Pty Ltd on any gold produced from the tenement. Red Dirt Mining are not aware of any material 3rd party interests or royalties.</p> <p><u>Native Title, Historical sites and Wilderness</u></p> <p>Archaeological and ethnographic studies were undertaken for M30/99 prior to further development in 2001. These studies involved an examination of the existing ethnographic data base pertaining to the mining area and an examination of known ethnographic site distribution. The studies concluded that it was unlikely that the developments will impact any sites of Aboriginal significance. This information was submitted to the Department of Aboriginal Affairs.</p> <p>A recent search of the Department of Aboriginal Affairs (DAA) Heritage Inquiry System indicates there are no registered Aboriginal Heritage Sites identified within any tenement covered under this MCP (DAA 2019).</p> <p>The mining lease was granted prior to the Native Title Act being enforced.</p>
	<i>The security of the tenure held at the time of reporting along with any known impediments to obtaining a licence to operate in the area.</i>	The tenements are held in good standing by Red Dirt Mining Pty Ltd. a wholly owned subsidiary of Viking Mines Ltd.
Exploration done by other parties	<i>Acknowledgment and appraisal of exploration by other parties.</i>	<p>The Red Dirt tenements have been actively explored and mined since 1886 with the arrival of prospecting parties during the initial Western Australia gold rush. Arthur and Tom Evans founded the First Hit gold mine in 1938.</p> <p>Tom and Arthur worked the mine until Tom sold his share to Riverina station owner Bill Skathorpe in late 1953. Arthur and Bill worked the mine until Bill's death in 1954. George Vujcich Senior bought the mine from Arthur and Bill's estate in late 1955. George and then his son George operated the mine intermittently over a 40-year period. Barmenco purchased the First Hit tenement from George's daughter in late 1996.</p> <p>Regional exploration activities were undertaken by Western Mining Corporation (WMC) and Consolidated Gold Operations prior to 1996 including geochemical sampling, lag sampling and auger programs. The programs covered the various regolith features with a purpose of defining broad geochemical anomalies.</p> <p>From 1996 to 2002 exploration and development was undertaken by Barra Resources or Barmenco.</p> <p>Barmenco Pty Ltd undertook geochemical soil geochemistry on the northern part of M30/99 between 1995 and 2000. Various combinations of multielement geochemistry were completed historically, ranging from gold-only assays to 42 element geochemistry.</p> <p>The following extract from the Barra Resources mine closure and production report provides an insight to the exploration and discovery of the First Hit deposit:</p> <p><i>"Barmenco Pty Ltd acquired the First Hit tenement in August 1996, with the objective of exploring for and developing moderate sized high grade gold deposits. Because of Barmenco's mining and exploration activities at Two Boys, Karonie, Jenny Wren, Gordon Sirdar and Bacchus Gift mines the period between August 1996 and June 2000 saw only intermittent work at First Hit. Twenty RC drill holes were completed demonstrating the potential for high-grade underground resources.</i></p> <p><i>The First Hit deposit was effectively discovered in June 2000 with drill hole BFH 025 which returned 3 zones of mineralisation including 5m @ 60 g/t, 7m @ 9.0 g/t and 2m @ 3.7 g/t".</i></p> <p>Barra Resources subsequently completed a 20 m x 25 m drill out to 240 m in depth, combined with a detailed feasibility study, culminating in the commencement of mining operations in August 2001.</p>



Criteria	JORC Code explanation	Commentary
		<p>Barra Resources also completed RC drill programs at three prospects within the First Hit Project leases, referred to as First Hit North, First Hit South and Clarkes Well. Minor gold mineralisation was intersected in a small number of holes, but no further exploration was completed.</p> <p>The leases have since been owned by several companies and private operators without much additional exploration.</p>
Geology	<i>Deposit type, geological setting and style of mineralisation</i>	<p><u>Regional Geology</u></p> <p>The area of interest lies on the 1:100,000 Riverina geological sheet 3038 (Wyche, 1999). The Mt Ida greenstone belt is a north-striking belt of predominantly metamorphosed (upper greenschist-amphibolite facies) mafic and ultramafic rocks that form the western boundary of the Eastern Goldfields geological terrane. The major structure in this belt is the Mt Ida Fault, a deep mantle tapping crustal suture that trends N-S and dips to the east. It marks the western boundary of the Kalgoorlie Terrane (~2.7 Ga) of the Eastern Goldfields Province against the Barlee Terrane (~3.0 Ga) of the Southern Cross Province to the west. To the east the belt is bounded by the Ballard Fault, a continuation of the strike extensive Zuleika Shear.</p> <p>The Mt Ida belt is widely mineralised, predominantly with discordant vein gold deposits. Associated element anomalism typically includes copper and arsenic but neither have been identified in economic concentrations. There is some nickel sulphide mineralisation associated with the komatiite component of the supracrustal rocks and the area includes a locally significant beryl deposit sporadically mined for emeralds. In the Riverina area the outcrop position of the Ida Fault is equivocal, and it is best regarded as a corridor of related structures with an axis central to the belt.</p> <p>The Riverina and First Hit Project area dominantly comprises metabasalts and metadolerites of tholeiitic parentage with lesser metagabbros and komatiites. Small post-tectonic granitoids intrude the sequence with locally higher-grade metamorphic conditions. Structurally, the dominant features are north-striking, east-dipping reverse faults and associated anastomosing strain zones. A conjugate set of late brittle structures striking NE and NW is also evident.</p> <p>The mineralisation exploited to date has typically been narrow mesothermal anastomosing veins. These frequently have strike and dip dimensions able to sustain small high-grade mining operations.</p> <p><u>Local Geology</u></p> <p>The local geology of the First Hit Project area comprises north striking ultramafics, komatiites and peridotites with some sediments in the eastern part of the block. To the west there is a metabasalt unit including a prominent gabbro and further west again more peridotite with amphibolite. The general strike trend drifts to the north-northwest then back to north. The sequence includes a small felsic intrusive west of the Emerald workings and a zone of felsic schists within the eastern ultramafics. Felsic intrusives occur in the northwest corner. The local strike fabric trends north then north-northeast.</p> <p>The First Hit mineralisation occurs as a quartz lode varying to 4 m in thickness dipping at 70° to the east. The lode is hosted in biotite-carbonate schist within metabasalt and plunges to the south at around 50°. Numerous shafts, prospecting pits and costeans exist on the tenements and recorded production for the First Hit and First Hit North areas in the period 1930-1974 was ~7478 oz Au from 6091 tonnes mined. The First Hit North workings are 130 m further to the north-northeast.</p> <p><u>References</u></p> <p>Wyche, S.1(1995). Geology of the Mulline and Riverina 1:100,000 Sheets. Geological Survey of Western Australia</p> <p>Grey, A.R (2002) Annual Technical Reporting, 1 July 2000 to 30 June 2001, E30/193, M30/99, M30/118, P30/869, P30/894, Riverina 1:100,000 Sheet 3038 Barra Resources Limited</p>



Criteria	JORC Code explanation	Commentary
Drill hole Information	<p>A summary of all information material to the understanding of the exploration results including a tabulation of the following information for all Material drill holes:</p> <ul style="list-style-type: none"> • easting and northing of the drill hole collar • elevation or RL (Reduced Level – elevation above sea level in metres) of the drill hole collar • dip and azimuth of the hole • down hole length and interception depth • hole length. <p>If the exclusion of this information is justified on the basis that the information is not Material and this exclusion does not detract from the understanding of the report, the Competent Person should clearly explain why this is the case.</p>	A summary of the relevant drillhole information has been included in the body of the report.
Data aggregation methods	<p>In reporting Exploration Results, weighting averaging techniques, maximum and/or minimum grade truncations (e.g., cutting of high grades) and cut-off grades are usually Material and should be stated. Where aggregate intercepts incorporate short lengths of high-grade results and longer lengths of low grade results, the procedure used for such aggregation should be stated and some typical examples of such aggregations should be shown in detail.</p> <p>The assumptions used for any reporting of metal equivalent values should be clearly stated.</p>	Significant assay results or aggregated intercept reporting have been completed using a minimum cut-off grade of 0.5g/t. No high grade cut-off has been used.
Relationship between mineralisation widths and intercept lengths	<ul style="list-style-type: none"> • These relationships are particularly important in the reporting of Exploration Results. • If the geometry of the mineralisation with respect to the drill hole angle is known, its nature should be reported. • If it is not known and only the down hole lengths are reported, there should be a clear statement to this effect (eg 'down hole length, true width not known'). 	The drilling programs at the First Hit deposit reported herein are variably oblique to the true width of the deposit. All drill holes are reported as down hole widths as the true width cannot be determined.
Diagrams	<p>Appropriate maps and sections (with scales) and tabulations of intercepts should be included for any significant discovery being reported. These should include, but not be limited to a plan view of drill hole collar locations and appropriate sectional views.</p>	All appropriate maps and plans are included in the body of the report.
Balanced reporting	<p>Where comprehensive reporting of all Exploration Results is not practicable, representative reporting of both low and high grades and/or widths should be practiced to avoid misleading reporting of Exploration Results.</p>	All appropriate information is included in the report.



Criteria	JORC Code explanation	Commentary
Other substantive exploration data	<p><i>Other exploration data, if meaningful and material, should be reported including (but not limited to): geological observations; geophysical survey results; geochemical survey results; bulk samples – size and method of treatment; metallurgical test results; bulk density, groundwater, geotechnical and rock characteristics; potential deleterious or contaminating substances</i></p>	<p>Geophysical data used at the First hit project includes: Magnetic data: Viking Mines purchased historic magnetic geophysical data from Southern Geoscience Consultants Pty Ltd from the multi-client data source. The data purchased is recorded as the Riverina (R#60371) survey and was completed by Barminto. 1,432 line km of data was purchased by Viking mines. The survey acquisition details are recorded as: Line spacing 25m, Line direction 090-270, Tie line spacing 250m, Tie line direction 180-000, Aircraft survey height 25m, Survey flown February 1999</p> <p>Equipment specifications: Aircraft type Fletcher FU24-950, Survey navigation UTS Nav System V3.0, Data acquisition UTS ACQSYS V3.2, Data positioning Real time differential GPS, GPS type Novatel 951R, 12 channel, Magnetometer Scintrex Cesium Vapour Model CS2, Compensation RMS AADC II, Resolution 0.001nT, Recording interval 0.1 sec or 4-5m, Sensor height 25 m, Radar altimeter King model KRA-405, Recording interval 0.1 sec or 4-5m, Base station magnetometer Scintrex ENVI-MAG, Recording interval 5.0 sec</p> <p>Gravity data: The acquisition and processing of 674 new gravity stations commenced on the 26th of January 2021 and finished on the 30th of January 2021. Final data were delivered shortly after project completion. All data was acquired for Viking Mines Limited over the First hit project area located approximately 46km west of Menzies in the Gold Fields region of Western Australia. Gravity stations were acquired using a 200m x 50m regular grid configuration by Atlas using one crew utilising foot-borne gravity methods. The following instrumentation was used for acquisition of the gravity data:</p> <ul style="list-style-type: none"> One CG-5 Autograv Gravity Meter (Serial Number: 41081, SF: 1.000000), One CHC i70+ GNSS Rover Receiver, One CHCi70+ GNSS Base Receiver
Further work	<p><i>The nature and scale of planned further work (eg tests for lateral extensions or depth extensions or large-scale step-out drilling). Diagrams clearly highlighting the areas of possible extensions, including the main geological interpretations and future drilling areas, provided this information is not commercially sensitive.</i></p>	<p>3D modelling of the regional geology and structure at the tenement scale is in progress.</p> <p>The evaluation of all geochemical data is being evaluated to design additional exploration activities on the exploration tenements which may include geochemistry, RC and diamond drilling.</p> <p>Further assessment of RC samples received is required, including additional testwork on the remaining samples to determine the variability due to the relatively coarse nature of the gold seen in the RC chips. Additional assaying will be completed on the samples to see if there is a significant nugget effect.</p> <p>Execution of the 2021 RC drill programme consisting of 72 holes for 6,723m has been completed, however results are still being obtained and interpreted.</p> <p>This drill programme involved testing around step out hole VDD016 to test for new shoot potential, including additional systematic step out traverses to the north along the First Hit structural trend Programme design to test the depth extensions of the First Hit mineralisation. Three other target areas were also tested including First Hit South, Twin Peaks, and Jana's Reward.</p> <p>In addition, assessment of the effectiveness of historical RC drilling in light of recent observation on poor sampling practices (4m composites) for narrow vein high-grade gold targets will commence and be tested through the completion of the 2021 RC drilling programme.</p> <p>Incorporation of assay data into a regional structural model to define new targets for follow up and to provide support for the 4 target areas identified from the Air-Core programme.</p>