



Kalahari Exploration Update

Drilling Update at Witvlei and Snowball

Perth, Western Australia – 8 March 2022 – The Board of Noronex Limited (**Noronex** or the **Company**) (**ASX: NRX**) is pleased to provide an update on the exploration of its suite of copper projects in Namibia.

Highlights

- Both drill rigs have moved to the Hennep Prospect at Snowball East testing a number of geological and geophysical targets at the prospective contact.
- A further program of drilling is being planned at Dalheim to follow up anomalous geology intersected in the initially 13 holes once results are received. An infill soil survey is planned to assist targeting further drilling.
- Results from the drilling completed at Okasewa have been received with an intercept south of the known resource that reports :
 - 13m @ 0.85 % Cu from 2m in 21OKRC015 and
 - 5m @ 1.0 % Cu from 21m and
 - 1m @ 1.2 % Cu from 144m
 - 2m @ 0.76 % Cu from 133m in 21OKRC004
- Three holes have been completed at Kehoro North at Snowball West testing a chargeable IP anomaly.

Witvlei Drilling

The focus of the current exploration efforts is on five targets on the Witvlei project, comprising two Exclusive Prospecting Licences (EPLs 7028 and 7029) covering 390 km² that are prospective for sedimentary Cu-Ag mineralisation.

The initial program has now been completed and further work is being evaluated and will be finalised when full results have been received for the drilling. The program has included 71 RC holes for a total 13,947m.

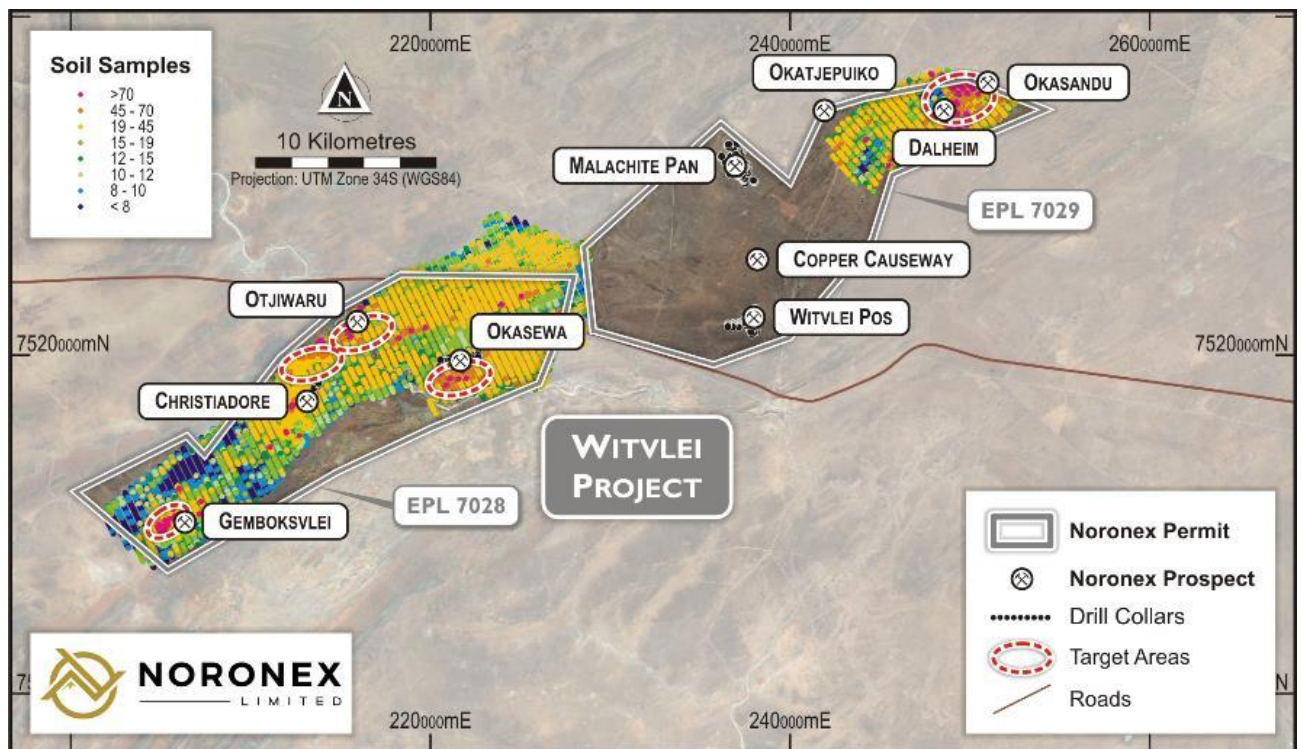


Figure 1 Geochemical image showing Copper soil geochemistry and high priority targets being drilled in Witvlei

Okasewa

Results from the holes completed have been received from Okasewa from the 18 holes for 3,600m with an intercept in hole 21OKRC015 identified from a strong Copper soil anomaly.

Intercepts include :

- 13m @ 0.85 % Cu from 2m in 21OKRC015 and
- 5m @ 1.0 % Cu from 21m
- 1m @ 1.2 % Cu from 144m
- 2m @ 0.76 % Cu from 133m in 21OKRC004

The holes intersected the Eskadron Formation containing brown siltstone and interbedded sandstones with debris flow. Malachite staining was intercepted down to approximately 20m vertically with fine pyrite, chalcopryite and chalcocite developed in the siltstone horizons at depth below.

Samples have been collected in 3m composites and at 1m intervals where mineralisation was visually noted. Samples were prepared in the ALS sample preparation facility in Namibia and assayed at their laboratory in South Africa (see Table 1).

Hole_ID	Easting m	Northing m	RL m	Azi	Dip	Hole_Depth m	Depth_From m	Width m	Cu %	Ag ppm
21OKRC001	224134	7520601	1489	333	-60	200	no sig results			
21OKRC002	224092	7520690	1491	334	-60	200	18	1	0.34	2
							73	1	0.41	1
21OKRC003	224240	7520428	1485	328	-58	200	72	3	0.3	0
21OKRC004	224195	7520516	1483	328	-60	200	133	2	0.76	19
21OKRC005	224290	7520338	1491	333	-60	200	no sig results			
21OKRC006	224062	7519940	1488	333	-58	200	no sig results			
21OKRC007	224012	7520026	1486	333	-59	200	no sig results			
21OKRC008	223962	7520116	1488	333	-59	200	no sig results			
21OKRC009	223911	7520203	1488	330	-60	200	no sig results			
21OKRC010	223814	7520374	1482	332	-60	200	no sig results			
21OKRC011	224595	7520615	1489	331	-59	200	no sig results			
21OKRC012	224484	7520005	1485	339	-59	200	no sig results			
21OKRC013	224495	7520795	1492	330	-60	200	no sig results			
21OKRC014	224443	7520878	1493	332	-62	200	34	1	0.45	1
							87	2	0.6	3
21OKRC015	224400	7520970	1491	333	-60	200	2	13	0.85	11
							21	5	1.01	5
							123	1	0.33	0
							128	1	0.34	0
							144	1	1.2	1
22OKRC016	223215	7520610	1482	333	-60	200	no sig results			
22OKRC017	222983	7520193	1495	333	-60	200	no sig results			
21OKRC018	225235	7520380	1482	330	-60	200	no sig results			

Intercepts > 0.3 % Cu with 3m internal dilution.

Figure 2. Table of significant intercepts from the Okasewa prospect (see Table 1).

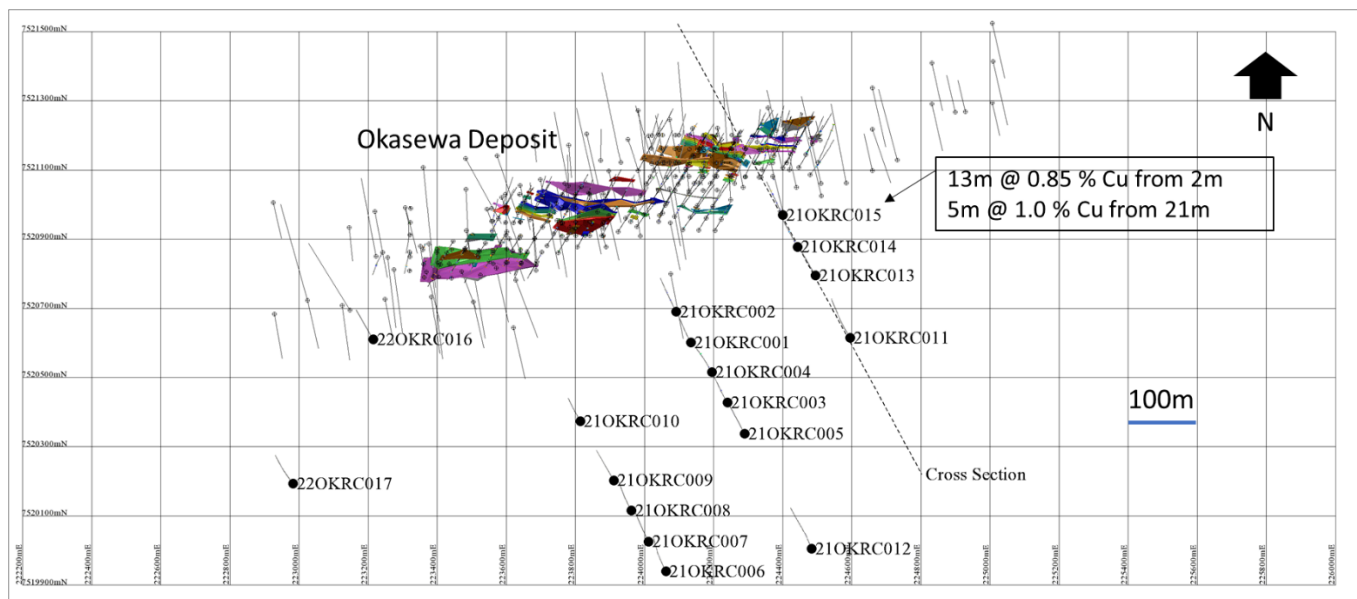


Figure 3 Plan of Okasewa Prospect with completed drill program and resource mineralised shells with historical drilling.

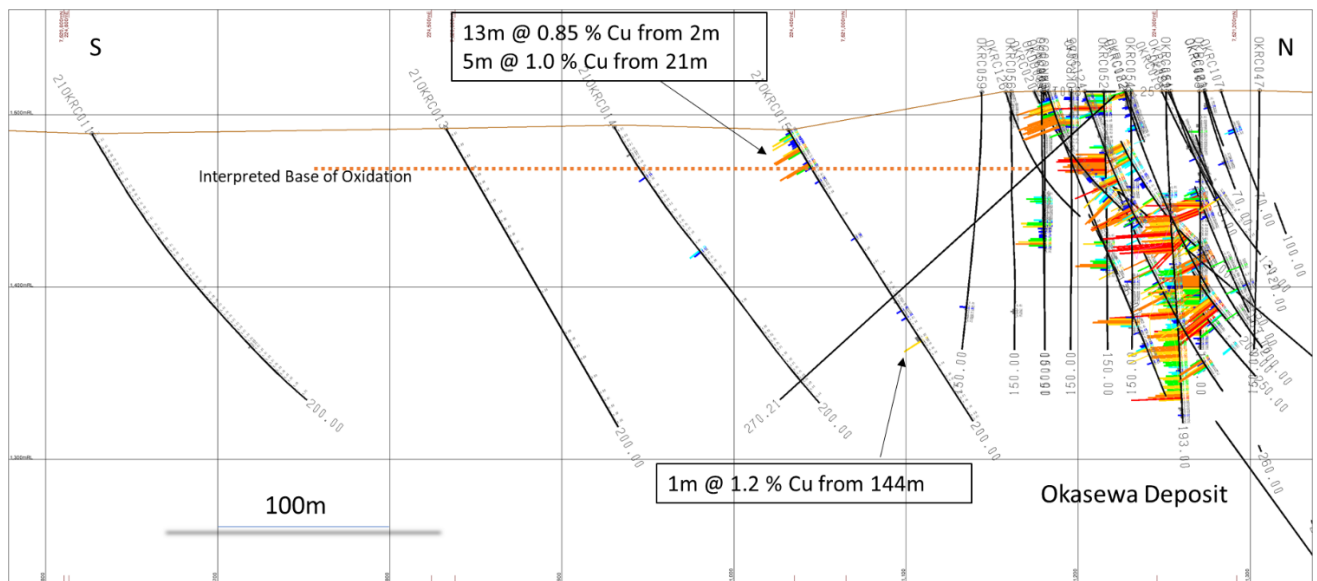


Figure 4. Cross Section looking west of recent Okasewa Drilling and the Okasewa Deposit defined by historical drilling. Drilling intersected a steeply dipping fine sediment sequence of argillites, thin limestones and sandstones.

Dalheim

Drilling has been completed for the time being as the rigs move to Snowball. A further program is being planned to follow up anomalous geology intersected in the initial 13 holes drilled for 2,718m.

An infill soil survey is being planned prior to further work as samples are on a 400 by 80m grid which will be close up to 100m lines and 40m samples over anomalous areas with a combined pXRF and analytical survey.

Diamond drilling is expected to follow up on these regional RC hole fences to define the style and character of the geology and mineralisation.

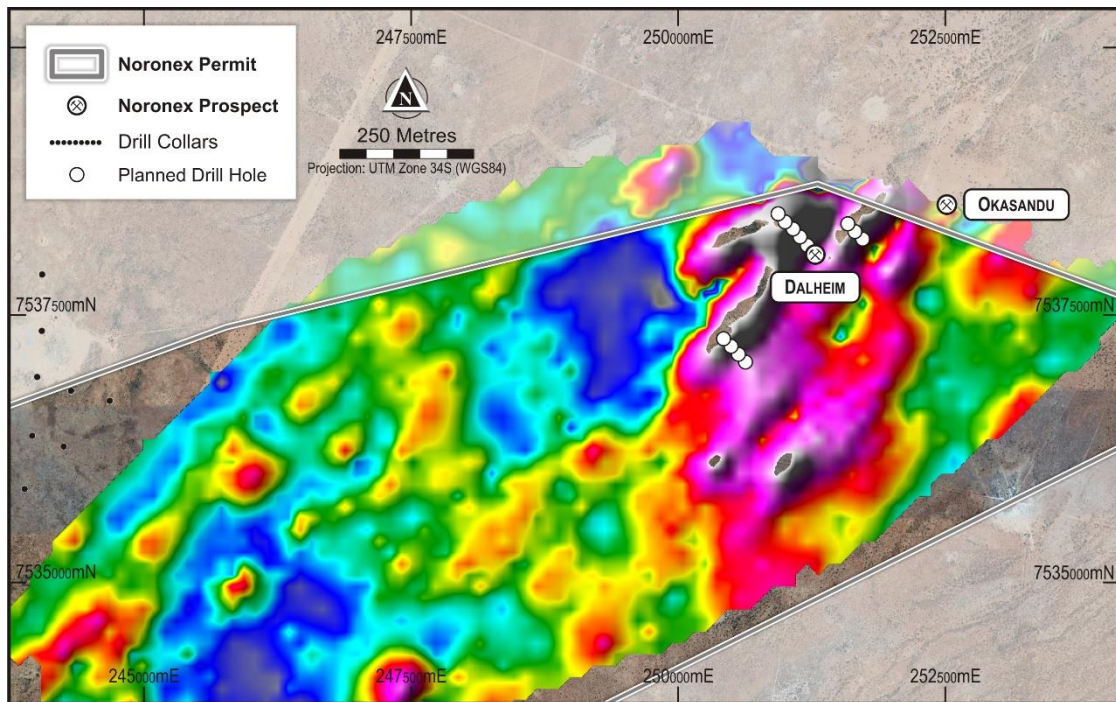


Figure 5. Completed fencing of drilling at Dalheim on anomalous Copper soil geochemistry

Snowball Joint Venture Drilling

Three holes have been completed on the western Snowball tenement at Kehoro North (Havango) testing a major structure and IP chargeability anomaly.

A program of ten holes is now underway on the eastern tenement with two rigs drilling at Hennep to test the prospective NPF-D'Kar contact and the chargeability anomalies defined.

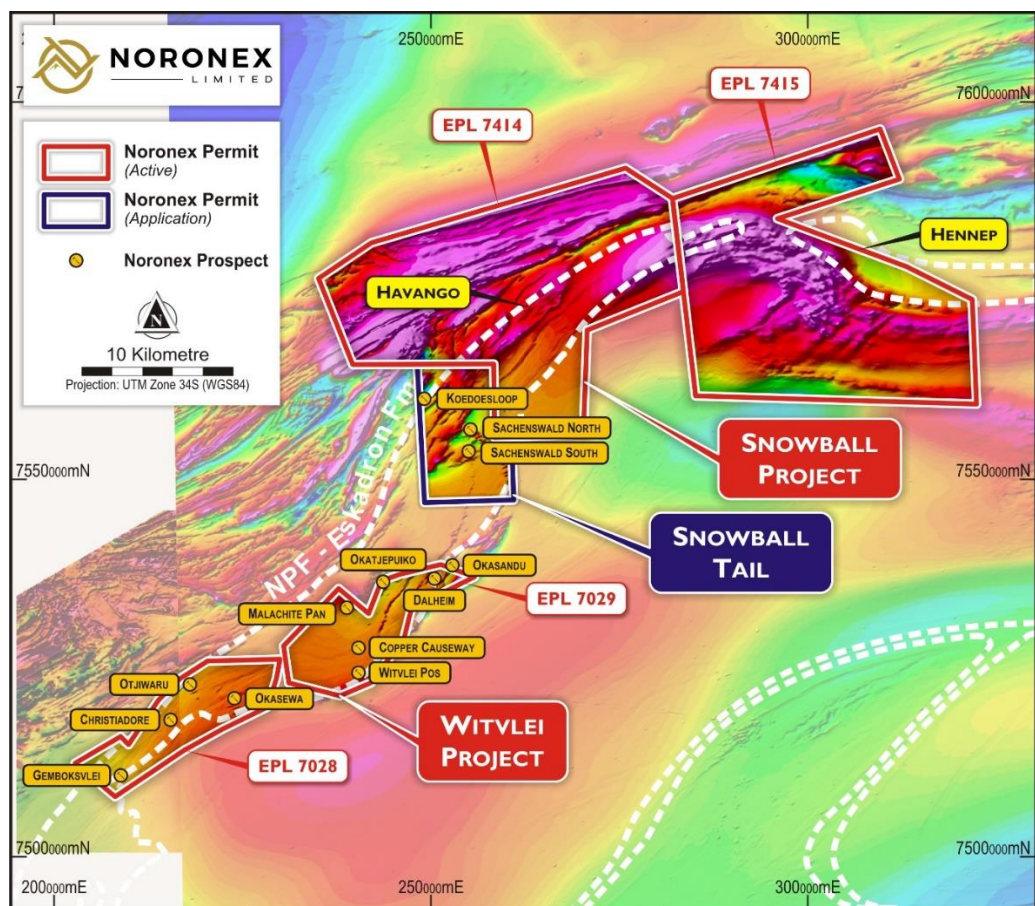


Figure 6: Aeromagnetic image of Snowball Joint Venture area showing location of prospects.

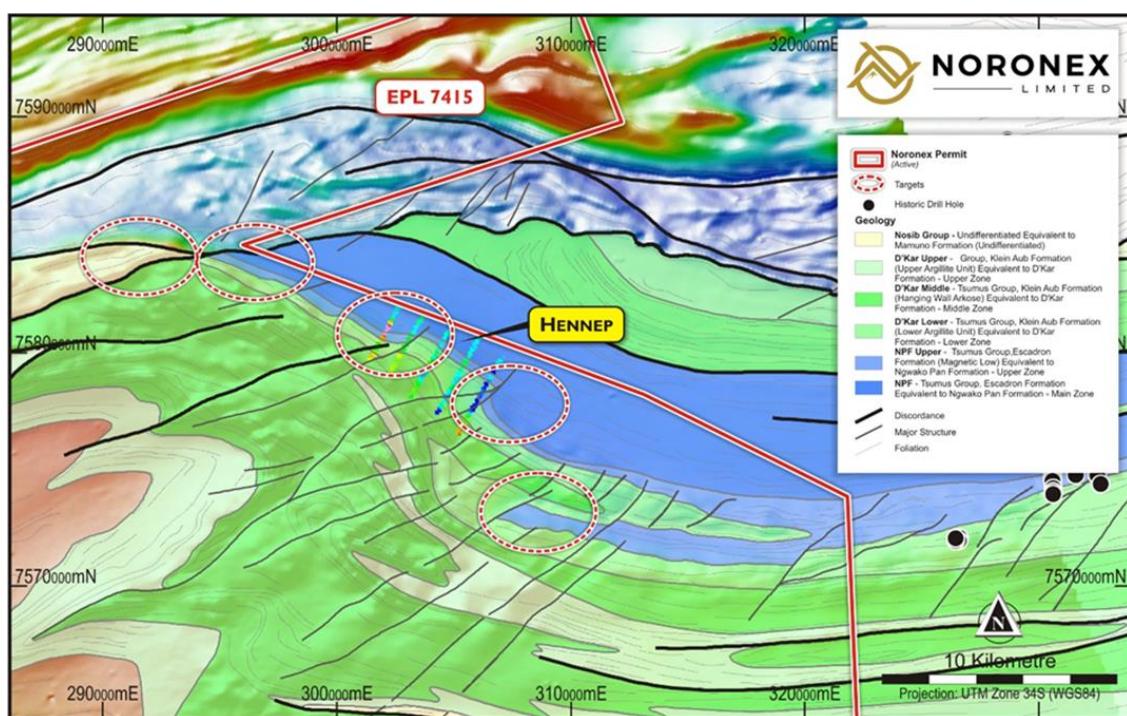


Figure 7: Target zones at the Henneep prospect in the Snowball Joint Venture with anomalous Chargeability on the prospective horizon anomaly defined.

Competent Person Statement – Exploration Results

The information in this report that relates to Exploration Results at the Witvlei and Snowball Copper Project is based on information compiled by Mr Bruce Hooper who is a Registered Professional Geoscientist (RPGeo) of The Australian Institute of Geoscientists. Mr Hooper is a consultant to Noronex Ltd and has sufficient experience that is relevant to the style of mineralisation and type of deposit under consideration and to the activity which he is undertaking to qualify as Competent Person as defined in the 2012 Edition of the Australasian Code for Reporting of Exploration Results, Mineral Resources and Ore Reserves. Mr Hooper consents to the inclusion in the report of the matters based on his information in the form and context in which it appears.

– ENDS –

Authority:

This announcement has been authorised for release by the Board of Directors of Noronex Limited
For further information, contact the Company at info@noronexlimited.com.au or on (08) 6555 2950

About Noronex Limited

Noronex is an ASX listed copper company with advanced projects in the Kalahari Copper Belt, Namibia and in Ontario, Canada that have seen over 180,000m of historic drilling.

The company plans to use modern technology and exploration techniques to generate new targets at the projects and grow the current resource base.

Forward-Looking Statements

This document includes forward-looking statements. Forward-looking statements include, but are not limited to, statements concerning Noronex Limited's planned exploration programs, corporate activities and any, and all, statements that are not historical facts. When used in this document, words such as "could," "plan," "estimate," "expect," "intend," "may", "potential," "should" and similar expressions are forward-looking statements. Noronex Limited believes that its forward-looking statements are reasonable; however, forward-looking statements involve risks and uncertainties, and no assurance can be given that actual future results will be consistent with these forward-looking statements. All figures presented in this document are unaudited and this document does not contain any forecasts of profitability or loss.

APPENDIX 1: JORC COMPLIANT EXPLORATION REPORT

The following information is provided in accordance with Table 1 of Appendix 5A of the JORC Code 2012 – Section 1 (Sampling Techniques and Data), Section 2 (Reporting of Exploration Results).

JORC Code 2012 Edition – Table 1

Section 1 - Sampling Techniques and Data

Criteria	JORC Code explanation	Commentary
Sampling techniques	<i>Nature and quality of sampling (e.g. cut channels, random chips, or specific specialised industry standard measurement tools appropriate to the minerals under investigation, such as down hole gamma sondes, or handheld XRF instruments, etc). These examples should not be taken as limiting the broad meaning of sampling.</i>	At Witvlei Project Drilling was completed at the Okasewa and Dalheim prospect. Drill samples were collected on 1m intervals from the cyclone of the RC drill rig with two 2-3 kg samples (original and duplicate) sub-samples collected in calico bags via a cone splitter.
	<i>Include reference to measures taken to ensure sample representivity and the appropriate calibration of any measurement tools or systems used.</i>	All drilling RC samples were weighed, split in a cone splitter and composited on site
	<i>Aspects of the determination of mineralisation that are Material to the Public Report. In cases where 'industry standard' work has been done this would be relatively simple (e.g. 'reverse circulation drilling was used to obtain 1 m samples from which 3 kg was pulverised to produce a 30 g charge for fire assay'). In other cases more explanation may be required, such as where there is coarse gold that has inherent sampling problems. Unusual commodities or mineralisation types (e.g. submarine nodules) may warrant disclosure of detailed information.</i>	Reverse Circulation drilling was used to generate 1m samples.
Drilling techniques	<i>Drill type (e.g. core, reverse circulation, open-hole hammer, rotary air blast, auger, Bangka, sonic, etc) and details (e.g. core diameter, triple or standard tube, depth of diamond tails, face-sampling bit or other type, whether core is oriented and if so, by what method, etc).</i>	Reverse Circulation (RC) drilling completed at Okasewa during December 2021 by FerroDrill Namibia using 'best practice' to achieve maximum sample recovery and quality.
Drill sample recovery	<i>Method of recording and assessing core and chip sample recoveries and results assessed.</i>	Weights were collected from the complete sample collected every metre to manage recovery, the majority of samples were collected dry.

Criteria	JORC Code explanation	Commentary
	<i>Measures taken to maximise sample recovery and ensure representative nature of the samples.</i>	Diligent control was maintained on the rig on sample recovery and all smaller samples recorded.
	<i>Whether a relationship exists between sample recovery and grade and whether sample bias may have occurred due to preferential loss/gain of fine/coarse material.</i>	No relationship to sample size has been noticed.
Logging	<i>Whether core and chip samples have been geologically and geotechnically logged to a level of detail to support appropriate Mineral Resource estimation, mining studies and metallurgical studies.</i>	Samples were logged by qualified geologists and recorded in LogChief software.
	<i>Whether logging is qualitative or quantitative in nature. Core (or costean, channel, etc) photography.</i>	Logging is quantitatively recorded for every metre on oxidation, lithology and mineralisation that is stored in a MaxGeo Datashed database.
	<i>The total length and percentage of the relevant intersections logged.</i>	
Sub-sampling techniques and sample preparation	<i>If core, whether cut or sawn and whether quarter, half or all core taken.</i>	No diamond drilling was completed
	<i>If non-core, whether riffled, tube sampled, rotary split, etc and whether sampled wet or dry.</i>	Samples were split by a cone splitter on the cyclone and then composited by spearing where required. The majority of samples were collected dry.
	<i>For all sample types, the nature, quality and appropriateness of the sample preparation technique.</i>	Samples were weighed, fine crushing of entire sample to 70% -2mm, split off 250 and pulverise split to better than 85% passing 75 microns. Samples were prepared at the ALS Okahandja laboratory.
	<i>Quality control procedures adopted for all sub-sampling stages to maximise representivity of samples.</i>	Quality control procedures are in place with repeats, blanks inserted in laboratory.
	<i>Measures taken to ensure that the sampling is representative of the in situ material collected, including for instance results for field duplicate/second-half sampling.</i>	Quality control procedures are in place with 1 in 20 blanks and standards. Field duplicates were collected at 1 in 20 frequency.
	<i>Whether sample sizes are appropriate to the grain size of the material being sampled.</i>	Sample size is appropriate for base metal exploration.
Quality of assay data and laboratory tests	<i>The nature, quality and appropriateness of the assaying and laboratory procedures used and whether the technique is considered partial or total.</i>	Analysed by ALS Johannesburg for ME-ICP61 and overlimit by ME-OG62 33 elements by a 4 acid digestion, HCl leach and ICP-AES.
	<i>For geophysical tools, spectrometers, handheld XRF instruments, etc, the parameters used in determining the analysis including instrument make and model, reading times, calibrations factors applied and their derivation, etc.</i>	No data from field-portable pXRF tools are reported.

Criteria	JORC Code explanation	Commentary
	<i>Nature of quality control procedures adopted (e.g. standards, blanks, duplicates, external laboratory checks) and whether acceptable levels of accuracy (ie lack of bias) and precision have been established.</i>	Blanks and repeats are inserted at 1 in 20 sample intervals. Field duplicates are inserted at 1 in 20. Standards from Zambian Sedimentary Copper deposits of appropriate grades are inserted at 1 in 20.
<i>Verification of sampling and assaying</i>	<i>The verification of significant intersections by either independent or alternative company personnel.</i>	Sampling is overseen and managed by MSA procedures and geologists
	<i>The use of twinned holes.</i>	No holes have been twinned.
	<i>Documentation of primary data, data entry procedures, data verification, data storage (physical and electronic) protocols.</i>	Supervision by MSA senior management from South Africa
	<i>Discuss any adjustment to assay data.</i>	No adjustments have been made.
<i>Location of data points</i>	<i>Accuracy and quality of surveys used to locate drill holes (collar and down-hole surveys), trenches, mine workings and other locations used in Mineral Resource estimation.</i>	Hole locations are located using a hand held GPS
	<i>Specification of the grid system used.</i>	Coordinates are reported in WGS 84 UTM Zone 34S.
	<i>Quality and adequacy of topographic control.</i>	The Project area has a relatively flat relief, no collar variations were applied.
<i>Data spacing and distribution</i>	<i>Data spacing for reporting of Exploration Results.</i>	Drillhole spacing is planned in fences with holes 100m apart to top and tail. Orientation was varied to cross interpreted sedimentary dips. Holes were planned to 200m depth.
	<i>Whether the data spacing and distribution is sufficient to establish the degree of geological and grade continuity appropriate for the Mineral Resource and Ore Reserve estimation procedure(s) and classifications applied.</i>	It is considered that drilling is insufficient to establish continuity of mineralisation and grade consistent for an Inferred Mineral Resource.
	<i>Whether sample compositing has been applied.</i>	Samples were composited to 3m if no visible mineralisation was reported.
<i>Orientation of data in relation to geological structure</i>	<i>Whether the orientation of sampling achieves unbiased sampling of possible structures and the extent to which this is known, considering the deposit type.</i>	Drilling : Variable hole orientations give some indication mineralisation is sub-vertical. Holes are orientated across the mapped and geophysically interpreted folding
	<i>If the relationship between the drilling orientation and the orientation of key mineralised structures is considered to have introduced a sampling bias, this should be assessed and reported if material.</i>	True widths are not known at this time.
<i>Sample security</i>	<i>The measures taken to ensure sample security.</i>	Samples were delivered direct to the laboratory supervised by a MSA geologist.

Criteria	JORC Code explanation	Commentary
Audits or reviews	<i>The results of any audits or reviews of sampling techniques and data.</i>	No audits possible.

Section 2 Reporting of Exploration Results

Criteria	JORC Code explanation	Commentary
Mineral tenement and land tenure status	<p><i>Type, reference name/number, location and ownership including agreements or material issues with third parties such as joint ventures, partnerships, overriding royalties, native title interests, historical sites, wilderness or national park and environmental settings.</i></p> <p><i>The security of the tenure held at the time of reporting along with any known impediments to obtaining a licence to operate in the area.</i></p>	<p>The Snowball project consists of EPL 7414 and 7415. The tenement were granted to Heyn Ohana Ltd on 29 May 2019.</p> <p>Heyn Ohana holds a 100% legal and beneficial interest. Noronex Exploration and Mining Ltd have an option with Heyn Ohana to earn-in and acquire up to 100% of the issued capital of Heyn Ohana.</p> <p>Environmental Clearance Certificate have been granted by the Minister of Environment and Tourism in respect of EPL 7414 on 5th November 2021 for ground work to commence.</p> <p>There are no overriding royalties other than from the state, no special indigenous interests, historical sites or other registered settings are known in the region of the reported results.</p> <p>The Witvlei project consists of EPL 7028 and EPL 7029. The tenements have been issued for a period of three years and renewed to 12 June 2023. These were transferred to Aloe Investments Two Hundred and Thirty-Seven (Pty) Ltd (Aloe 237) on 15 July 2019 with effect on 11 July 2019. The EPLs have been endorsed by the Ministry and reflect this transfer.</p> <p>Aloe 237 holds a 100% legal and beneficial interest and is a 95% owned subsidiary of White Metal. The remaining 5% interest is held by a local Namibian partner. Larchmont Investments Pty Ltd have an option with White Metal to earn-in and acquire up to 95% of the issued capital of Aloe 237.</p> <p>Noronex Ltd owns an 80% interest in Larchmont Investments Pty Ltd.</p> <p>Environmental Clearance Certificate were issued by the Minister of Environment and Tourism in respect of EPL 7028 on 19 December 2019 in respect of exploration activities which clearance is to be valid for a period of three years.</p>

Criteria	JORC Code explanation	Commentary
		<p>There are no overriding royalties other than from the state, no special indigenous interests, historical sites or other registered settings are known in the region of the reported results.</p>
<i>Exploration done by other parties</i>	<i>Acknowledgment and appraisal of exploration by other parties.</i>	<p>At the Snowball Project has had no previous significant exploration with no drilling or ground geophysics ever completed.</p> <p>At the Witvlei Project exploration begun in 1968 to the early 1970s with Sigma Mining and Prospecting Company (Pty) Ltd (Sigma) and FEDSWA completed exploration activities which included the following:</p> <p>Malachite Pan: soil sampling, outcrop grab and channel sampling, geological mapping and IP Surveys, which led to the discovery of Malachite Pan and sinking of a vertical shaft. The shaft closed in 1975 due to difficult ground and prevailing low copper prices.</p> <p>Okasewa: soil sampling, which delineated a 500 m long Cu soil anomaly. Fedswa also drilled 87 diamond drill holes. A resource was reported to JORC standards</p> <p>Christiadore: soil sampling, which delineated the mineralisation at Christiadore. Fedswa also drilled a total of 25 diamond drill holes.</p> <p>Gemboksvlei: - In 1971, Fedswa Prospekteerders (FEDSWA), precursor to Billiton (SA), drilled a total of 14 diamond holes covering a strike length of 300m. A historical, non-JORC2012-compliant mineral resource was estimated at 430 000 t to an average depth of 110 m, at an average grade of 1.8% Cu. Insufficient work has been undertaken by the Competent Person to confirm this historical estimate.</p>
<i>Geology</i>	<i>Deposit type, geological setting and style of mineralisation.</i>	<p>The Witvlei Project is located within a north easterly trending belt of Mesoproterozoic Sinclair Age sediments (the Eskadron Formation) comprising altered andesitic breccias, red to grey siltstones and minor limestone. Extensive deformation has resulted in folding about north-east south-west trending axes, with fold cores containing exposed basement age rocks (Rehoboth Age) comprising dioritic intrusive, mafic to intermediate volcanic and volcanoclastic rocks. Copper mineralisation is typically located within argillites and localised marls within the Eskadron Formation.</p> <p>Okasewa prospect is in the Eskadron Formation a sequence of sandstones and argillites with thin limestone bands. Mineralisation is hosted in steeply dipping argillite beds.</p> <p>Chalcocite is the dominant copper-bearing mineral at the Witvlei Project, with other copper sulphide mineralisation. Chrysocolla and malachite are observed as the main minerals in the oxide ore in the district and is logged at Okasewa.</p>

Criteria	JORC Code explanation	Commentary																																																																																																																																																																																																																																																																																			
		The mineralisation is stratiform and occurs in numerous sub-parallel lodes. A surface oxide zone will be flat lying.																																																																																																																																																																																																																																																																																			
Drill hole Information	<p>A summary of all information material to the understanding of the exploration results including a tabulation of the following information for all Material drill holes:</p> <p><i>easting and northing of the drill hole collar</i></p> <p><i>elevation or RL (Reduced Level – elevation above sea level in metres) of the drill hole collar</i></p> <p><i>dip and azimuth of the hole</i></p> <p><i>down hole length and interception depth</i></p> <p><i>hole length.</i></p> <p><i>If the exclusion of this information is justified on the basis that the information is not Material and this exclusion does not detract from the understanding of the report, the Competent Person should clearly explain why this is the case.</i></p>	<table><tr><th>Hole_ID</th><th>Easting m</th><th>Northing m</th><th>RL m</th><th>Azi</th><th>Dip</th><th>Hole_Depth m</th><th>Depth_From m</th><th>Width m</th><th>Cu %</th><th>Ag ppm</th></tr><tr><td>21OKRC001</td><td>224134</td><td>7520601</td><td>1489</td><td>333</td><td>-60</td><td>200</td><td>no sig results</td><td></td><td></td><td></td></tr><tr><td>21OKRC002</td><td>224092</td><td>7520690</td><td>1491</td><td>334</td><td>-60</td><td>200</td><td>18</td><td>1</td><td>0.34</td><td>2</td></tr><tr><td></td><td></td><td></td><td></td><td></td><td></td><td></td><td>73</td><td>1</td><td>0.41</td><td>1</td></tr><tr><td>21OKRC003</td><td>224240</td><td>7520428</td><td>1485</td><td>328</td><td>-58</td><td>200</td><td>72</td><td>3</td><td>0.3</td><td>0</td></tr><tr><td>21OKRC004</td><td>224195</td><td>7520516</td><td>1483</td><td>328</td><td>-60</td><td>200</td><td>133</td><td>2</td><td>0.76</td><td>19</td></tr><tr><td>21OKRC005</td><td>224290</td><td>7520338</td><td>1491</td><td>333</td><td>-60</td><td>200</td><td>no sig results</td><td></td><td></td><td></td></tr><tr><td>21OKRC006</td><td>224062</td><td>7519940</td><td>1488</td><td>333</td><td>-58</td><td>200</td><td>no sig results</td><td></td><td></td><td></td></tr><tr><td>21OKRC007</td><td>224012</td><td>7520026</td><td>1486</td><td>333</td><td>-59</td><td>200</td><td>no sig results</td><td></td><td></td><td></td></tr><tr><td>21OKRC008</td><td>223962</td><td>7520116</td><td>1488</td><td>333</td><td>-59</td><td>200</td><td>no sig results</td><td></td><td></td><td></td></tr><tr><td>21OKRC009</td><td>223911</td><td>7520203</td><td>1488</td><td>330</td><td>-60</td><td>200</td><td>no sig results</td><td></td><td></td><td></td></tr><tr><td>21OKRC010</td><td>223814</td><td>7520374</td><td>1482</td><td>332</td><td>-60</td><td>200</td><td>no sig results</td><td></td><td></td><td></td></tr><tr><td>21OKRC011</td><td>224595</td><td>7520615</td><td>1489</td><td>331</td><td>-59</td><td>200</td><td>no sig results</td><td></td><td></td><td></td></tr><tr><td>21OKRC012</td><td>224484</td><td>7520005</td><td>1485</td><td>339</td><td>-59</td><td>200</td><td>no sig results</td><td></td><td></td><td></td></tr><tr><td>21OKRC013</td><td>224495</td><td>7520795</td><td>1492</td><td>330</td><td>-60</td><td>200</td><td>no sig results</td><td></td><td></td><td></td></tr><tr><td>21OKRC014</td><td>224443</td><td>7520878</td><td>1493</td><td>332</td><td>-62</td><td>200</td><td>34</td><td>1</td><td>0.45</td><td>1</td></tr><tr><td></td><td></td><td></td><td></td><td></td><td></td><td></td><td>87</td><td>2</td><td>0.6</td><td>3</td></tr><tr><td>21OKRC015</td><td>224400</td><td>7520970</td><td>1491</td><td>333</td><td>-60</td><td>200</td><td>2</td><td>13</td><td>0.85</td><td>11</td></tr><tr><td></td><td></td><td></td><td></td><td></td><td></td><td></td><td>21</td><td>5</td><td>1.01</td><td>5</td></tr><tr><td></td><td></td><td></td><td></td><td></td><td></td><td></td><td>123</td><td>1</td><td>0.33</td><td>0</td></tr><tr><td></td><td></td><td></td><td></td><td></td><td></td><td></td><td>128</td><td>1</td><td>0.34</td><td>0</td></tr><tr><td></td><td></td><td></td><td></td><td></td><td></td><td></td><td>144</td><td>1</td><td>1.2</td><td>1</td></tr><tr><td>22OKRC016</td><td>223215</td><td>7520610</td><td>1482</td><td>333</td><td>-60</td><td>200</td><td>no sig results</td><td></td><td></td><td></td></tr><tr><td>22OKRC017</td><td>222983</td><td>7520193</td><td>1495</td><td>333</td><td>-60</td><td>200</td><td>no sig results</td><td></td><td></td><td></td></tr><tr><td>21OKRC018</td><td>225235</td><td>7520380</td><td>1482</td><td>330</td><td>-60</td><td>200</td><td>no sig results</td><td></td><td></td><td></td></tr></table>	Hole_ID	Easting m	Northing m	RL m	Azi	Dip	Hole_Depth m	Depth_From m	Width m	Cu %	Ag ppm	21OKRC001	224134	7520601	1489	333	-60	200	no sig results				21OKRC002	224092	7520690	1491	334	-60	200	18	1	0.34	2								73	1	0.41	1	21OKRC003	224240	7520428	1485	328	-58	200	72	3	0.3	0	21OKRC004	224195	7520516	1483	328	-60	200	133	2	0.76	19	21OKRC005	224290	7520338	1491	333	-60	200	no sig results				21OKRC006	224062	7519940	1488	333	-58	200	no sig results				21OKRC007	224012	7520026	1486	333	-59	200	no sig results				21OKRC008	223962	7520116	1488	333	-59	200	no sig results				21OKRC009	223911	7520203	1488	330	-60	200	no sig results				21OKRC010	223814	7520374	1482	332	-60	200	no sig results				21OKRC011	224595	7520615	1489	331	-59	200	no sig results				21OKRC012	224484	7520005	1485	339	-59	200	no sig results				21OKRC013	224495	7520795	1492	330	-60	200	no sig results				21OKRC014	224443	7520878	1493	332	-62	200	34	1	0.45	1								87	2	0.6	3	21OKRC015	224400	7520970	1491	333	-60	200	2	13	0.85	11								21	5	1.01	5								123	1	0.33	0								128	1	0.34	0								144	1	1.2	1	22OKRC016	223215	7520610	1482	333	-60	200	no sig results				22OKRC017	222983	7520193	1495	333	-60	200	no sig results				21OKRC018	225235	7520380	1482	330	-60	200	no sig results			
Hole_ID	Easting m	Northing m	RL m	Azi	Dip	Hole_Depth m	Depth_From m	Width m	Cu %	Ag ppm																																																																																																																																																																																																																																																																											
21OKRC001	224134	7520601	1489	333	-60	200	no sig results																																																																																																																																																																																																																																																																														
21OKRC002	224092	7520690	1491	334	-60	200	18	1	0.34	2																																																																																																																																																																																																																																																																											
							73	1	0.41	1																																																																																																																																																																																																																																																																											
21OKRC003	224240	7520428	1485	328	-58	200	72	3	0.3	0																																																																																																																																																																																																																																																																											
21OKRC004	224195	7520516	1483	328	-60	200	133	2	0.76	19																																																																																																																																																																																																																																																																											
21OKRC005	224290	7520338	1491	333	-60	200	no sig results																																																																																																																																																																																																																																																																														
21OKRC006	224062	7519940	1488	333	-58	200	no sig results																																																																																																																																																																																																																																																																														
21OKRC007	224012	7520026	1486	333	-59	200	no sig results																																																																																																																																																																																																																																																																														
21OKRC008	223962	7520116	1488	333	-59	200	no sig results																																																																																																																																																																																																																																																																														
21OKRC009	223911	7520203	1488	330	-60	200	no sig results																																																																																																																																																																																																																																																																														
21OKRC010	223814	7520374	1482	332	-60	200	no sig results																																																																																																																																																																																																																																																																														
21OKRC011	224595	7520615	1489	331	-59	200	no sig results																																																																																																																																																																																																																																																																														
21OKRC012	224484	7520005	1485	339	-59	200	no sig results																																																																																																																																																																																																																																																																														
21OKRC013	224495	7520795	1492	330	-60	200	no sig results																																																																																																																																																																																																																																																																														
21OKRC014	224443	7520878	1493	332	-62	200	34	1	0.45	1																																																																																																																																																																																																																																																																											
							87	2	0.6	3																																																																																																																																																																																																																																																																											
21OKRC015	224400	7520970	1491	333	-60	200	2	13	0.85	11																																																																																																																																																																																																																																																																											
							21	5	1.01	5																																																																																																																																																																																																																																																																											
							123	1	0.33	0																																																																																																																																																																																																																																																																											
							128	1	0.34	0																																																																																																																																																																																																																																																																											
							144	1	1.2	1																																																																																																																																																																																																																																																																											
22OKRC016	223215	7520610	1482	333	-60	200	no sig results																																																																																																																																																																																																																																																																														
22OKRC017	222983	7520193	1495	333	-60	200	no sig results																																																																																																																																																																																																																																																																														
21OKRC018	225235	7520380	1482	330	-60	200	no sig results																																																																																																																																																																																																																																																																														
Data aggregation methods	<p>In reporting Exploration Results, weighting averaging techniques, maximum and/or minimum grade truncations (e.g. cutting of high grades) and cut-off grades are usually Material and should be stated.</p> <p>Where aggregate intercepts incorporate short lengths of high grade results and longer lengths of low grade results, the procedure used for such aggregation should be stated and some typical examples of such aggregations should be shown in detail.</p> <p>The assumptions used for any reporting of metal equivalent values should be clearly stated.</p>	Samples are reported based on a 0.3 % Cu cut-off and include up to 3m waste below the cut-off. Results reported are greater than 0.3m% Copper.																																																																																																																																																																																																																																																																																			
Relationship between mineralization widths and intercept lengths	<p>These relationships are particularly important in the reporting of Exploration Results.</p> <p>If the geometry of the mineralisation with respect to the drill hole angle is known, its nature should be reported.</p> <p>If it is not known and only the down hole lengths are reported, there should be a clear statement to this effect (e.g. ‘down hole length, true width not known’).</p>	Subcrop shows steep dips with an attempt to drill holes across the predominant dip direction. Due to RC drilling it is not clear on true thickness downhole.																																																																																																																																																																																																																																																																																			

Criteria	JORC Code explanation	Commentary
Diagrams	<i>Appropriate maps and sections (with scales) and tabulations of intercepts should be included for any significant discovery being reported These should include, but not be limited to a plan view of drill hole collar locations and appropriate sectional views.</i>	Okasewa Drilling Plan and Sections in body of report.
Balanced reporting	<i>Where comprehensive reporting of all Exploration Results is not practicable, representative reporting of both low and high grades and/or widths should be practiced to avoid misleading reporting of Exploration Results.</i>	All intervals were assayed.
Other substantive exploration data	<i>Other exploration data, if meaningful and material, should be reported including (but not limited to): geological observations; geophysical survey results; geochemical survey results; bulk samples – size and method of treatment; metallurgical test results; bulk density, groundwater, geotechnical and rock characteristics; potential deleterious or contaminating substances.</i>	No new information is being reported
Further work	<i>The nature and scale of planned further work (e.g. tests for lateral extensions or depth extensions or large-scale step-out drilling).</i>	A program of further work may be completed to follow up the anomalous results
	<i>Diagrams clearly highlighting the areas of possible extensions, including the main geological interpretations and future drilling areas, provided this information is not commercially sensitive.</i>	See body of report on planned areas of exploration.