

HERITAGE AGREEMENT COMPLETED

The Board of Mt Monger Resources Ltd (ASX:MTM, **Mt Monger** or the **Company**) is pleased to advise that the Company has completed a Heritage Protection Agreement (the Agreement) with the agents for the Nyalpa Pirniku people, who are Traditional Owners of lands around Laverton in the north Eastern Goldfields of Western Australia.

The Nyalpa Pirniku native title claim area covers a number of exploration licence applications held by the Company (Figure 1) at its East Laverton Project. By completing the Agreement, these applications should be granted by the WA Department of Mines, Industry Regulation and Safety over coming weeks, allowing the Company to implement its exploration programs. The Agreement also includes granted exploration licence E38/3302 which contains the Company's Seahorse Prospect area.

The Company looks forward to working with the Nyalpa Pirniku people on its ongoing exploration programs at East Laverton Project, where the Company holds a major land position, with exploration licences covering an area of about 3,000km². The tenements are highly prospective for gold and are being explored for mineralisation analogous to the nearby Grylls (7.4Moz Au resource) and Tropicana (7.6Moz Au resource) deposits.

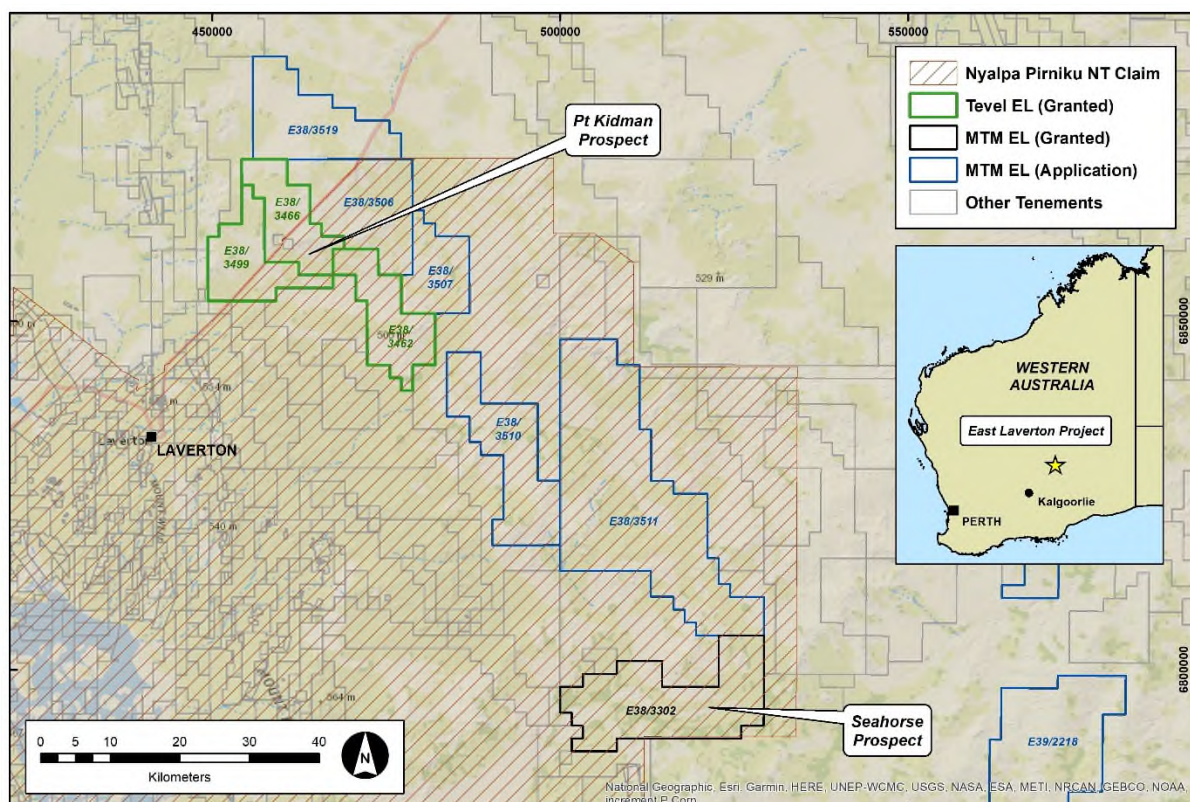


Figure 1: Location map of the Company's East Laverton Project tenements, showing the Nyalpa Pirniku native title claim area.

The region is very underexplored due to extensive shallow cover and has the potential to contain several major gold-bearing structures based on interpretation of the geophysical surveys over the area.

The Company is planning to conduct initial reconnaissance exploration once the tenements have been granted. Systematic soil sampling and subsequently drilling will be undertaken in key areas of interest along the line of strike from the Pt Kidman Prospect in the northwest, to Seahorse Prospect in the southeast.

This announcement has been authorised for release by the Board of Directors.

For further information, please contact:

Lachlan Reynolds
Managing Director
Mt Monger Resources Limited
Tel: +61 (0)8 6391 0112
Email: lachlan@mtmongerresources.com.au

Simon Adams
Company Secretary
Mt Monger Resources Limited
Tel: +61 (0)8 6391 0112
Email: simon@mtmongerresources.com.au

About Mt Monger Resources Limited

Mt Monger Resources Limited is an exploration company searching for gold, lithium, nickel, rare earth elements (REE) and base metals in the Goldfields and Ravensthorpe districts of Western Australia. The Company holds over 4,000km² of tenements in three prolific and highly prospective mineral regions. The Mt Monger Gold Project comprises a contiguous area of ~120km² area containing known gold deposits occurrences in the Mt Monger area, located ~70km SE of Kalgoorlie and immediately adjacent to the Randalls gold mill operated by Silver Lake Resources Limited. The East Laverton Gold Project is a regionally extensive package of underexplored tenements prospective for gold, base metals and REE. The Ravensthorpe Project contains a package of tenements in the southern part of Western Australia between Esperance and Bremer Bay which are prospective for a range of minerals including lithium, nickel and graphite. Priority drilling targets have been identified in all project areas and the Company is well funded to undertake effective exploration programs. The Company has an experienced Board and management team which is focused on discovery to increase value for Shareholders.