

Tesoro Intersects 84.00m @ 1.16g/t Au at Ternerera, including a high-grade zone of 10.70m @ 6.51g/t Au

- Results returned for 6 diamond drill holes, all returning multiple gold intercepts from the Ternerera Gold Deposit including:
 - ZDDH0287:
 - **24.43m @ 3.43 g/t Au** from 483.57m; and
 - **10.70m @ 6.51g/t Au** from 491.30m;
 - Contained within **84.00m @ 1.16g/t Au** from 436.50m.
 - ZDDH0281:
 - **13.50m @ 1.21g/t Au** from 72.00m; and
 - **3.00m @ 1.56g/t Au** from 214.00m
 - ZDDH0282:
 - **2.00m @ 2.91g/t Au** from 233.00m; and
 - **1.35m @ 5.31g/t Au** from 245.75m;
 - Contained within **14.10m @ 0.94g/t Au** from 233.00m.
 - ZDDH0285:
 - **6.00m @ 1.82g/t Au** from 247.00 m;
 - Contained within **13.70m @ 1.07g/t Au** from 247.00m: and
 - **4.00m @ 1.44g/t Au** from 314.50m; and
 - **5.06m @ 1.17g/t Au** from 421.00m.
- Drilling continues to improve understanding of continuity of mineralisation and expand the Ternerera Gold Deposit.
- Mineralisation remains open in all directions and significant scope exists for continued Mineral Resource growth.
- Assays remain outstanding for 12 diamond drill holes, and once received, an updated Mineral Resource Estimate will be calculated.
- District wide mapping and sampling is continuing, identifying widespread occurrence of favourable gold host rocks.

Tesoro Resources Limited (Tesoro or the Company) (ASX:TSO, OTCQB:TSORF) is pleased to announce latest assay results from drilling at the Ternerera Gold Deposit located at the Company's El Zorro Gold Project (**El Zorro**) in Chile.

Tesoro received assays for 6 diamond drill holes completed as part of the current extensional and infill drilling program at El Zorro.

Results continue to improve the Company's understanding of the continuity of gold mineralisation throughout the Ternerera Gold Deposit plus extending known gold zones. Results will be used for the calculation of an updated Mineral Resource Estimate once assays are received for all outstanding holes.

Significant Intercepts are presented in Table 1.

Tesoro Managing Director Zeff Reeves commented:

“The consistency of gold mineralisation at Ternera continues to impress. Over recent months we have seen vast improvements in grade continuity and widths, particularly in the three higher grade gold zones within the deposit. Furthermore, Ternera remains open in all directions with some wide zones of mineralisation offering excellent potential for further mineral resource expansion”.

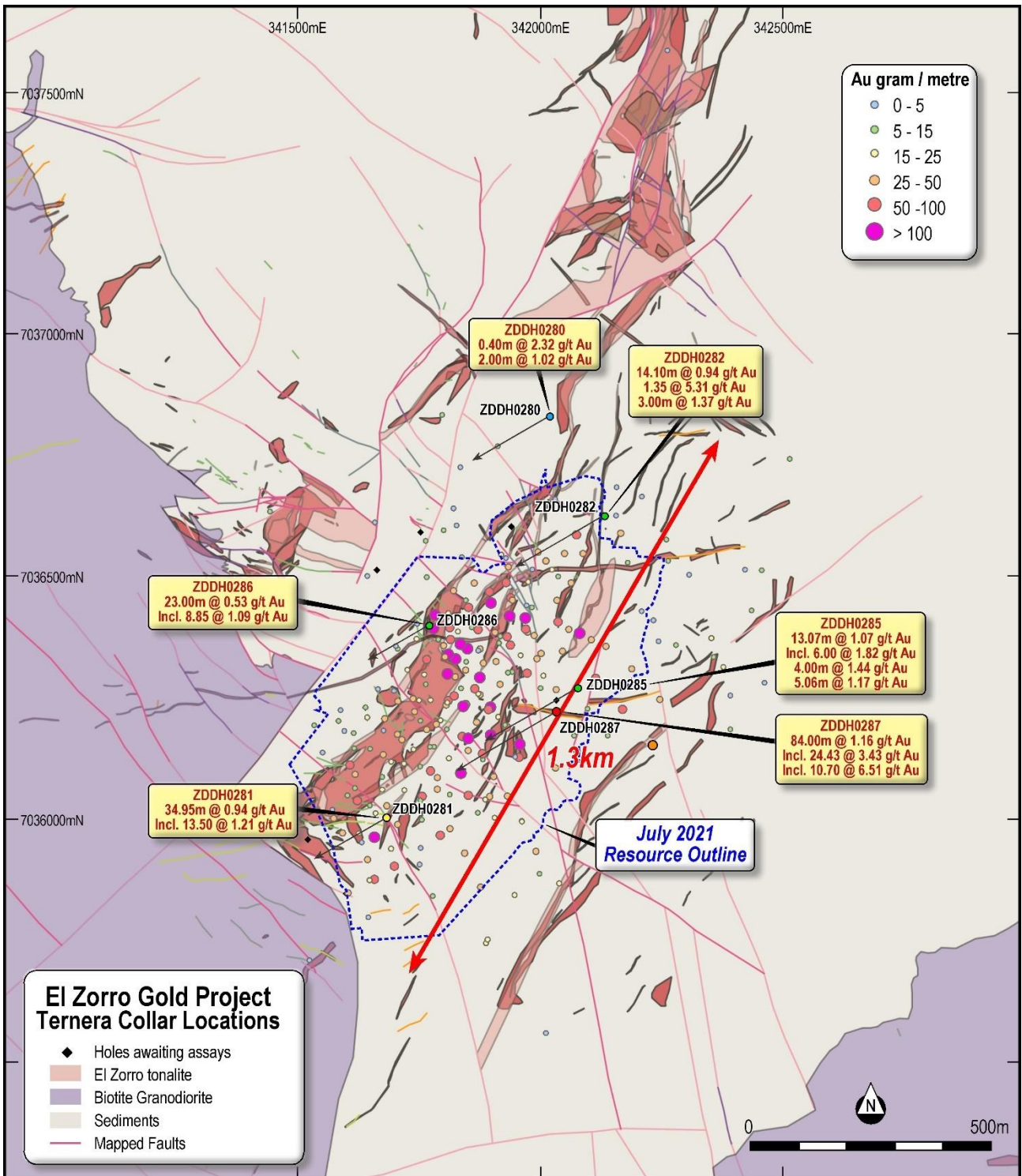


Figure 1: Ternera Drilling - Collar locations on geology and significant intercepts for holes reported in this announcement. PSAD56/19S datum.

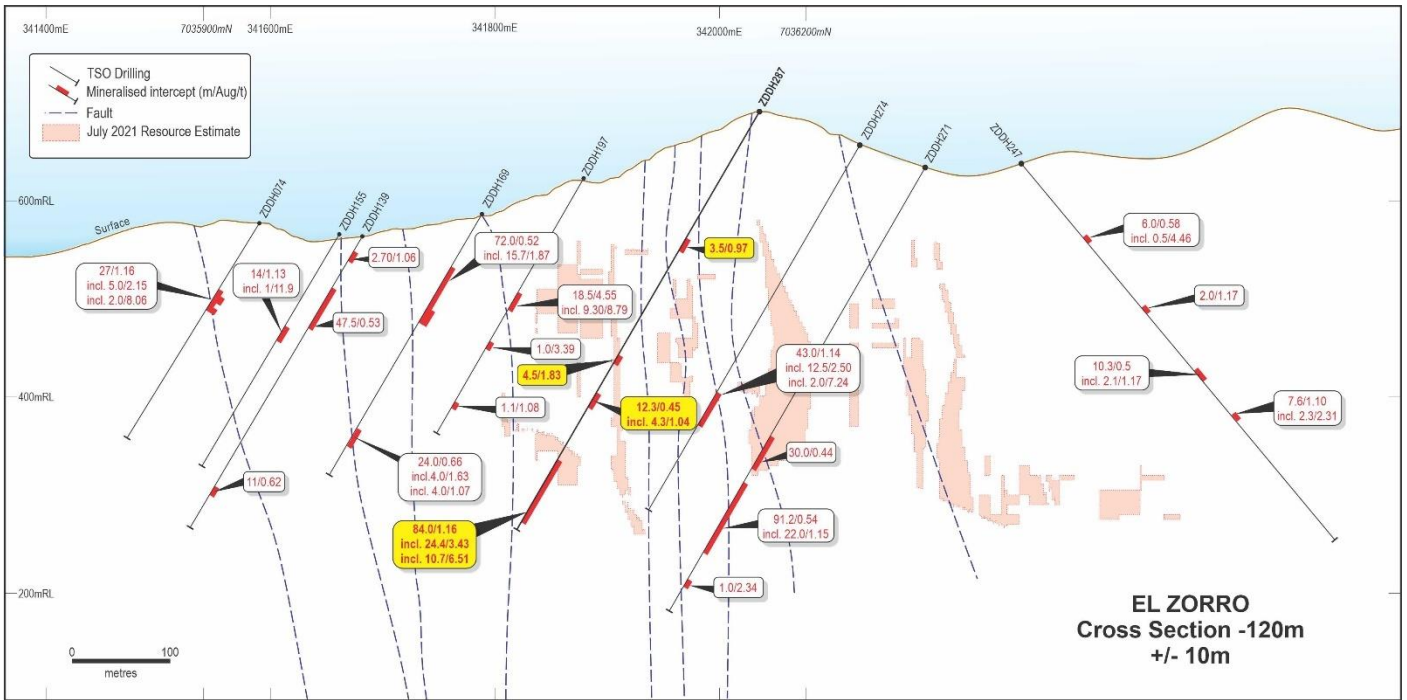


Figure 2: Ternerá Drill Section - 120m looking northwest showing new wide gold zone intercepted in hole ZDDH00287 which remains open to the south.

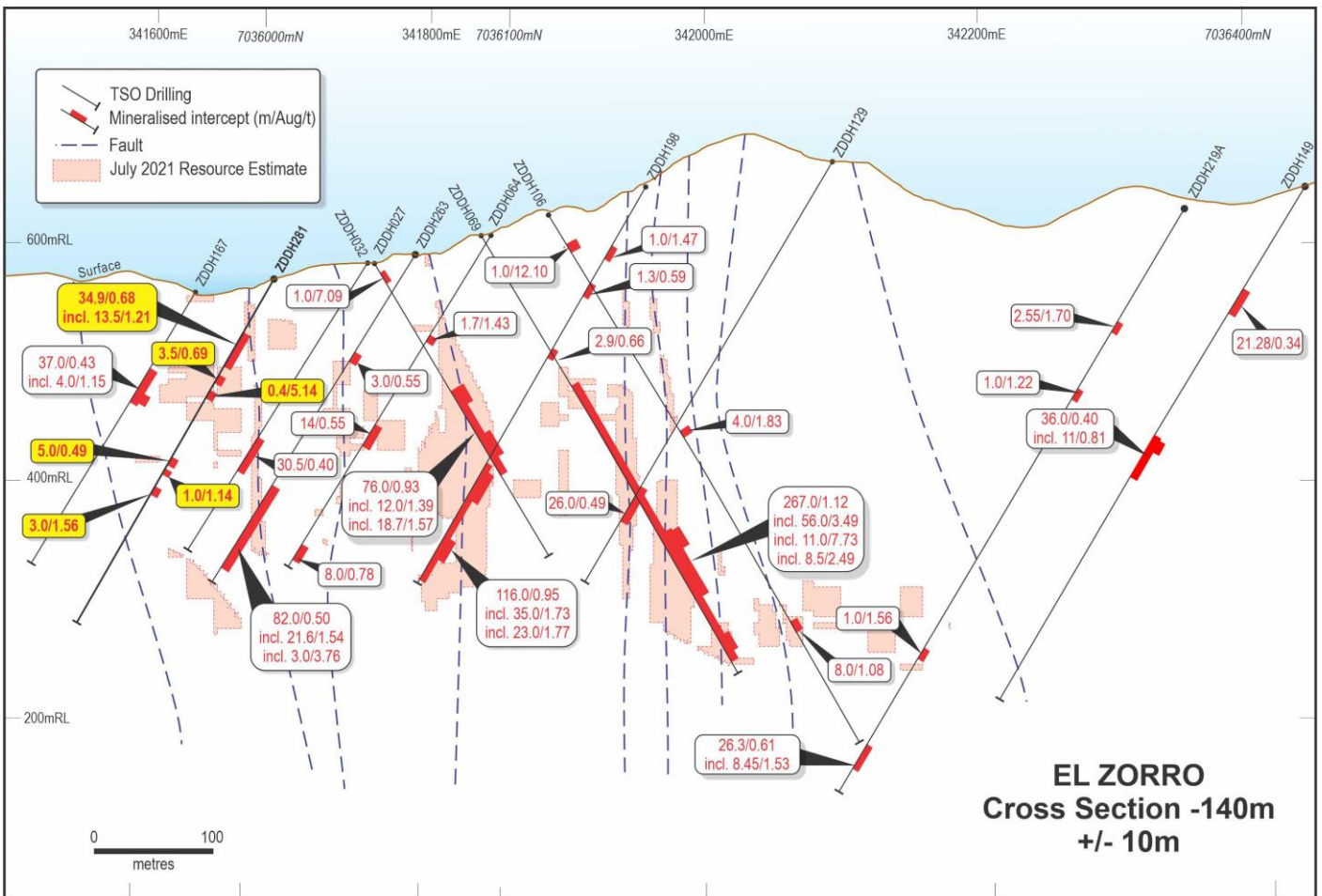


Figure 3: Ternerá Drill Section - 140m looking northwest showing well-developed shallow mineralisation in the west of the Ternerá Gold Deposit.

DRILLING RESULTS DISCUSSION

Holes ZDDH0287 returned a wide high-grade intercept of 97 g/m's through the southern extension of a well-developed high-grade gold zone in the eastern part of the Ternera Gold Deposit. This hole is particularly important, as it has defined a broad zone of mineralisation in a new area which remains open to the south. This zone has now been defined over 350m of strike and demonstrates excellent continuity and width. Previously reported result highlights from this zone include holes:

- ZDDH0192 (ASX announcement 5 October 2021):
 - **85.58m @ 0.82g/t Au** from 305.42m including;
 - **13.00m @ 2.20g/t Au** from 339.00m; and
 - **26.20m @ 1.17g/t Au** from 365.80m.
- ZDDH0203 (ASX announcement 20 October 2021) :
 - **25.00m @ 4.22g/t Au** from 367.00m including;
 - **14.00m @ 6.81g/t Au** from 373.00m; and
 - **1.40m @ 55.56g/t Au** from 383.00 m.
- ZDDH0242 (ASX announcement 12 January 2022):
 - **71.00m @ 1.58g/t Au** from 225.00m including;
 - **17.10m @ 5.10g/t Au** from 243.90m; and
 - **9.66m @ 7.58g/t Au** from 256.00m.

Holes ZDDH0281 and ZDDH0286 returned consistent shallow mineralisation from the west of the Ternera Gold Deposit. This shallow, strike extensive mineralisation has now been defined over 750m of strike and is open to the north and south.

Hole ZDDH0280 was drilled approximately 250m north of the main Ternera Deposit and returned multiple narrow gold results from within mineralised fault zones in sedimentary rocks. This indicates that the controlling mineralised fault zones continue to the north and have the potential to develop into broader zones of mineralisation where they cross the prospective El Zorro Tonalite host rocks.

NEXT STEPS

The Company currently is awaiting assays for 12 diamond drill holes from Ternera. Results are expected within the next two weeks, following which the Company intends to calculate an updated MRE for the Ternera Deposit. Tesoro has now completed 300 diamond drill holes at Ternera for 100,235m. The maiden MRE announced on 28 July 2021 utilised 148 holes for 45,503m's.

Tesoro's exploration continues, with district target generation work consisting of surface mapping and sampling. Results will be announced as they come to hand.

Hole_ID	From (m)	To (m)	Interval	Au (g/t)	Comments	Hole_ID	From (m)	To (m)	Interval	Au (g/t)	Comments
ZDDH0280	119.40	119.80	0.40	2.32		ZDDH0285	247.00	253.00	6.00	1.82	including
ZDDH0280	175.00	177.00	2.00	1.02		ZDDH0285	259.00	260.00	1.00	2.41	
ZDDH0280	149.00	149.50	0.50	0.79		ZDDH0285	293.00	294.00	1.00	1.08	
ZDDH0280	271.00	272.00	1.00	0.42		ZDDH0285	304.00	320.00	16.00	0.62	
ZDDH0280	332.00	333.00	1.00	0.47		ZDDH0285	304.00	305.00	1.00	1.87	including
ZDDH0281	42.37	43.10	0.73	2.59		ZDDH0285	314.50	318.50	4.00	1.44	including
ZDDH0281	59.05	94.00	34.95	0.68		ZDDH0285	378.00	379.00	1.00	0.56	
ZDDH0281	59.05	60.00	0.95	2.63	including	ZDDH0285	421.00	426.06	5.06	1.17	
ZDDH0281	72.00	85.50	13.50	1.21	including	ZDDH0285	451.00	458.00	7.00	0.56	
ZDDH0281	106.50	110.00	3.50	0.69		ZDDH0285	456.00	458.00	2.00	1.40	including
ZDDH0281	106.50	107.25	0.75	1.32		ZDDH0286	28.00	32.07	4.07	0.76	
ZDDH0281	109.00	110.00	1.00	1.26		ZDDH0286	28.00	29.00	1.00	1.47	
ZDDH0281	121.65	122.00	0.35	5.14		ZDDH0286	73.00	96.00	23.00	0.53	
ZDDH0281	136.00	137.00	1.00	0.50		ZDDH0286	77.15	86.00	8.85	1.09	including
ZDDH0281	155.00	156.00	1.00	0.45		ZDDH0286	79.00	80.00	1.00	3.64	including
ZDDH0281	158.00	159.00	1.00	0.43		ZDDH0286	270.00	270.54	0.54	1.13	
ZDDH0281	189.00	190.00	1.00	1.14		ZDDH0287	154.74	158.25	3.51	0.97	
ZDDH0281	201.00	206.00	5.00	0.49		ZDDH0287	154.74	155.95	1.21	2.27	
ZDDH0281	202.00	203.00	1.00	1.22	including	ZDDH0287	221.00	222.00	1.00	0.42	
ZDDH0281	214.00	217.00	3.00	1.56		ZDDH0287	273.35	274.00	0.65	0.45	
ZDDH0281	261.00	262.00	1.00	0.43		ZDDH0287	291.00	295.45	4.45	1.83	
ZDDH0282	155.00	157.00	2.00	0.49		ZDDH0287	343.70	356.00	12.30	0.45	
ZDDH0282	212.00	215.00	3.00	0.49		ZDDH0287	343.70	348.00	4.30	1.04	
ZDDH0282	233.00	247.10	14.10	0.94		ZDDH0287	386.00	387.00	1.00	0.96	
ZDDH0282	233.00	235.00	2.00	2.91	including	ZDDH0287	399.00	400.00	1.00	1.18	
ZDDH0282	245.75	247.10	1.35	5.31		ZDDH0287	419.00	420.00	1.00	1.39	
ZDDH0282	263.00	266.00	3.00	1.37		ZDDH0287	436.50	520.50	84.00	1.16	
ZDDH0282	265.00	266.00	1.00	3.40		ZDDH0287	463.00	465.00	2.00	1.52	including
ZDDH0282	296.00	297.00	1.00	1.40		ZDDH0287	483.57	508.00	24.43	3.43	including
ZDDH0282	326.00	327.00	1.00	5.18		ZDDH0287	483.57	486.00	2.43	4.68	including
ZDDH0285	107.00	108.00	1.00	0.60		ZDDH0287	491.30	502.00	10.70	6.51	including
ZDDH0285	247.00	260.70	13.70	1.07		ZDDH0287	515.00	516.00	1.00	1.59	including

Table 1: Significant drill results for holes reported in this announcement, results are uncut, no top cut has been applied. A table of significant intercepts for previously reported holes is presented in Appendix 2.

Authorised by the Board of Tesoro Resources Limited.

For more information:

Company:

Zeff Reeves Managing Director
Tesoro Resources Limited
+61 8 9322 1587

Investors:

Peter Taylor
NWR Communications
+61 (0) 412 036 231
peter@nwrcommunications.com.au

About Tesoro

Tesoro Resources Limited was established with a strategy of acquiring, exploring, and developing mining projects in the Coastal Cordillera region of Chile. The Coastal Cordillera region is host to multiple world class copper and gold mines, has well established infrastructure, service providers and an experienced mining workforce. Large areas of the Coastal Cordillera remain unexplored due to the unconsolidated nature of mining concession ownership, but Tesoro, via its in-country network and experience has been able secure rights to a district scale gold project in-line with the Company's strategy. Tesoro's 95% owned Chilean subsidiary owns 85% of the El Zorro Gold Project.



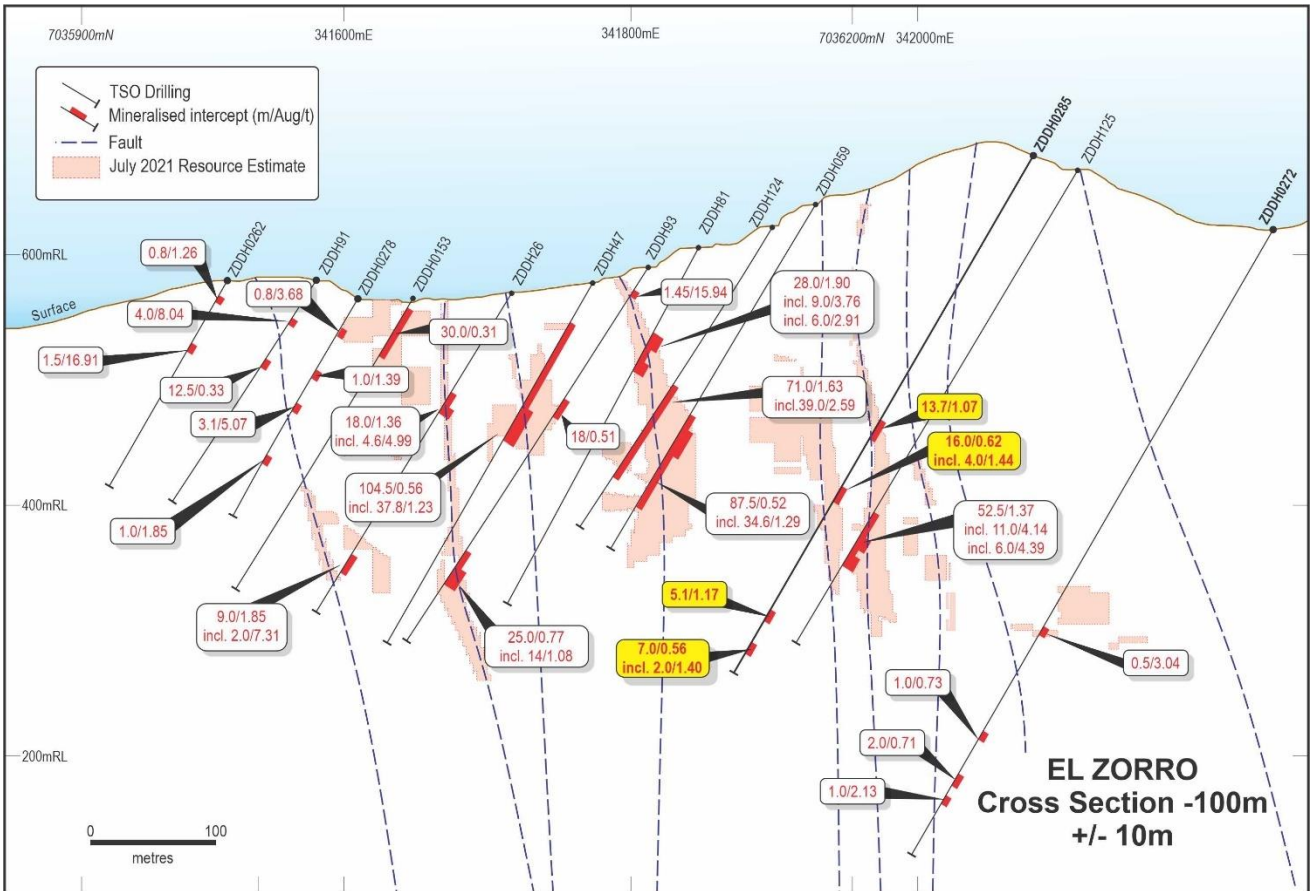
Competent Persons Statement

The information in this report that relates to Exploration Results is based on information compiled by Mr Zeffron Reeves (B App Sc (Hons) Applied Geology) MBA, MAIG). Mr Reeves is a member of the Australian Institute of Geoscientists and a Director and shareholder of the Company. Mr Reeves has sufficient experience that is relevant to the style of mineralisation and type of deposit under consideration and to the activity which he is undertaking to qualify as a Competent Person as defined in the 2012 Edition of the Australasian Code for Reporting of Exploration Results, Mineral Resources and Ore Reserves. Mr Reeves consents to the inclusion in this report of the matters based on this information in the form and context in which it appears.

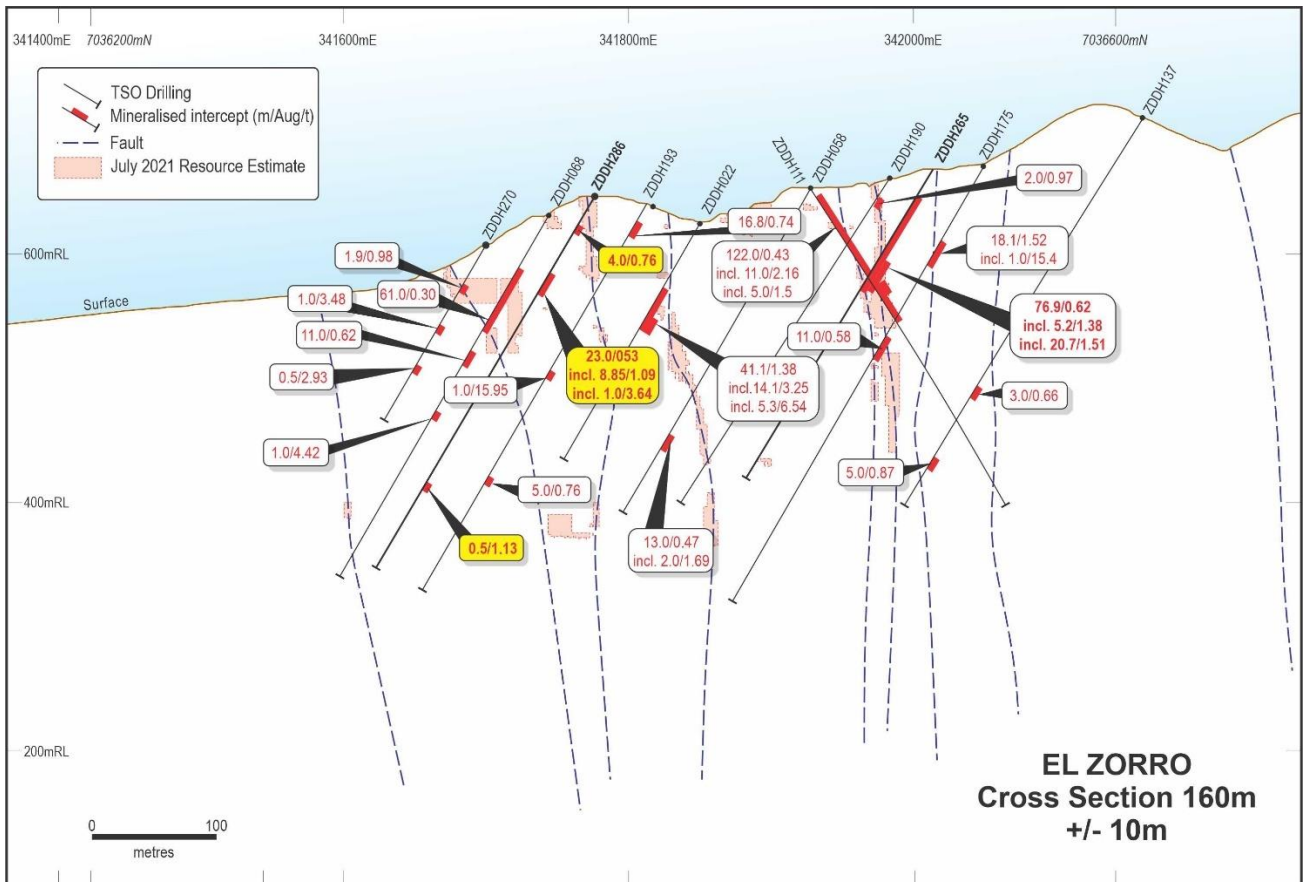
Future Performance

This announcement may contain certain forward-looking statements and opinion. Forward-looking statements, including projections, forecasts and estimates, are provided as a general guide only and should not be relied on as an indication or guarantee of future performance and involve known and unknown risks, uncertainties, assumptions, contingencies and other important factors, many of which are outside the control of the Company and which are subject to change without notice and could cause the actual results, performance or achievements of the Company to be materially different from the future results, performance or achievements expressed or implied by such statements. Past performance is not necessarily a guide to future performance and no representation or warranty is made as to the likelihood of achievement or reasonableness of any forward-looking statements or other forecast. Nothing contained in this announcement, nor any information made available to you is, or and shall be relied upon as, a promise, representation, warranty or guarantee as to the past, present or the future performance of Tesoro.

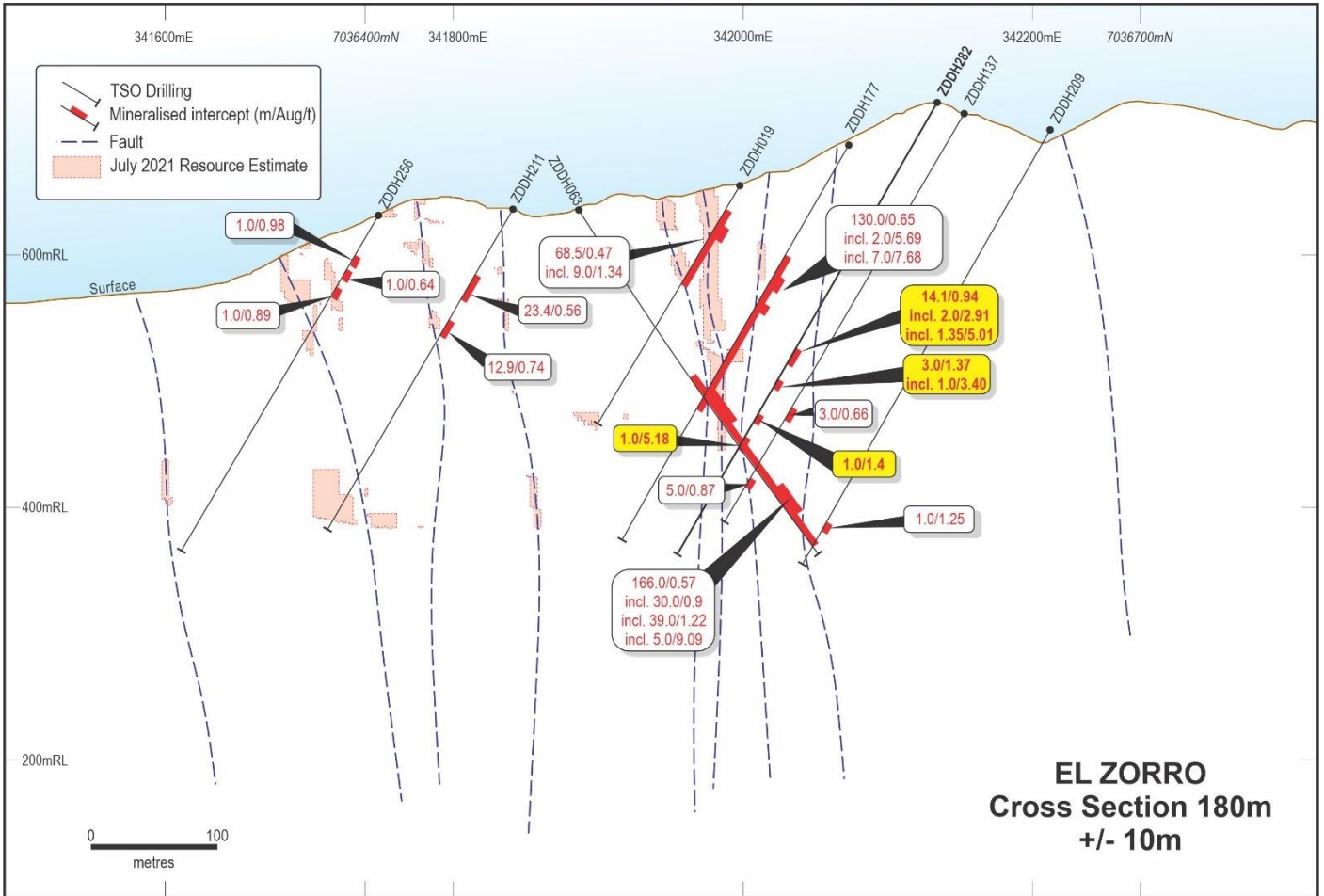
APPENDIX 1 – DRILL SECTIONS



Tenera Drill Section - 100m looking northwest.



Tenera Drill Section - 160m looking northwest.



Tenera Drill Section - 180m looking northwest.

APPENDIX 2 – SIGNIFICANT INTERCEPT TABLE

Hole_ID	From (m)	To (m)	Interval	Au (g/t)	Comments
ZDDH0001	5.00	119.00	114.00	0.35	
ZDDH0001	5.00	15.00	10.00	0.55	<i>including</i>
ZDDH0001	5.00	51.30	46.30	0.45	<i>including</i>
ZDDH0001	12.00	13.00	1.00	1.64	<i>including</i>
ZDDH0001	14.30	15.00	0.70	2.35	<i>including</i>
ZDDH0001	33.64	39.00	5.36	0.97	<i>including</i>
ZDDH0001	44.30	51.30	7.00	0.67	<i>including</i>
ZDDH0001	64.00	65.00	1.00	2.50	<i>including</i>
ZDDH0001	75.50	79.00	3.50	0.89	<i>including</i>
ZDDH0001	75.50	76.00	0.50	4.82	<i>including</i>
ZDDH0001	107.00	112.00	5.00	1.11	<i>including</i>
ZDDH0001	117.00	119.00	2.00	2.05	<i>including</i>
ZDDH0002	5.70	68.00	62.30	0.54	
ZDDH0002	8.80	24.30	15.50	1.15	<i>including</i>
ZDDH0002	8.80	14.00	5.20	1.96	<i>including</i>
ZDDH0002	51.70	68.00	16.30	0.78	<i>including</i>
ZDDH0002	58.00	61.00	3.00	3.62	<i>including</i>
ZDDH0003	21.00	77.30	56.30	0.50	
ZDDH0003	21.00	27.00	6.00	1.96	<i>including</i>
ZDDH0003	21.00	22.83	1.83	5.24	<i>including</i>
ZDDH0003	37.20	43.00	5.80	1.27	<i>including</i>
ZDDH0003	47.30	48.00	0.70	2.00	<i>including</i>
ZDDH0003	64.00	77.30	13.30	0.41	<i>including</i>
ZDDH0003	90.00	91.00	1.00	1.53	
ZDDH0004	5.00	66.00	61.00	0.97	
ZDDH0004	56.00	66.00	10.00	4.53	<i>including</i>
ZDDH0004	57.00	61.00	4.00	9.60	<i>including</i>
ZDDH0005	4.00	42.65	38.65	0.65	
ZDDH0005	4.00	32.00	28.00	0.84	<i>including</i>
ZDDH0005	9.80	28.00	18.20	1.17	<i>including</i>
ZDDH0005	9.80	10.15	0.35	20.10	<i>including</i>
ZDDH0005	51.60	52.00	0.40	2.03	
ZDDH0005	65.00	67.00	2.00	1.03	
ZDDH0005	72.00	85.90	13.90	0.52	
ZDDH0005	72.00	75.00	3.00	1.90	<i>including</i>
ZDDH0005	72.00	73.00	1.00	4.32	<i>including</i>
ZDDH0005	100.60	102.00	1.40	2.07	
ZDDH0005	130.00	132.60	2.60	0.66	
ZDDH0005	135.80	136.80	1.00	12.20	
ZDDH0005	0.00	88.00	88.00	0.15	
ZDDH0006	2.40	3.00	0.60	0.75	<i>including</i>
ZDDH0006	22.60	25.95	3.35	2.14	<i>including</i>
ZDDH0006	24.00	25.00	1.00	6.10	<i>including</i>
ZDDH0006	46.70	50.30	3.60	0.32	<i>including</i>
ZDDH0006	61.10	64.02	2.92	0.42	<i>including</i>
ZDDH0006	108.30	116.00	7.70	0.30	<i>including</i>
ZDDH0006	133.50	135.60	2.10	1.30	<i>including</i>
ZDDH0006	148.00	151.80	3.80	0.59	<i>including</i>
ZDDH0006	180.10	244.00	63.90	0.23	<i>including</i>
ZDDH0006	180.10	181.10	1.00	0.55	<i>including</i>
ZDDH0006	184.00	186.00	2.00	1.06	<i>including</i>
ZDDH0006	207.00	212.00	5.00	0.77	<i>including</i>
ZDDH0006	226.00	227.00	1.00	0.55	<i>including</i>
ZDDH0006	236.00	244.00	8.00	0.66	<i>including</i>
ZDDH0007	1.00	4.00	3.00	4.75	
ZDDH0007	39.00	66.20	27.20	0.70	
ZDDH0007	39.00	58.00	19.00	0.80	<i>including</i>
ZDDH0007	104.85	110.00	5.15	0.34	
ZDDH0007	117.40	118.00	0.60	2.75	
ZDDH0008	35.00	41.10	6.10	0.28	
ZDDH0008	58.00	59.00	1.00	1.43	

Hole_ID	From (m)	To (m)	Interval	Au (g/t)	Comments
ZDDH0009	4.00	6.00	2.00	1.39	
ZDDH0009	12.55	38.00	25.45	0.51	
ZDDH0009	21.00	26.00	5.00	1.09	<i>including</i>
ZDDH0009	48.00	48.50	0.50	2.19	
ZDDH0009	78.00	83.00	5.00	0.59	
ZDDH0010	31.00	33.00	2.00	2.47	
ZDDH0010	60.00	61.00	1.00	1.16	
ZDDH0010	66.00	67.00	1.00	1.04	
ZDDH0010	75.00	159.30	84.30	1.30	
ZDDH0010	75.00	104.00	29.00	2.95	<i>including</i>
ZDDH0010	82.50	86.45	3.95	4.97	<i>including</i>
ZDDH0010	91.00	102.00	11.00	4.70	<i>including</i>
ZDDH0010	93.00	97.00	4.00	8.50	<i>including</i>
ZDDH0010	120.00	126.00	6.00	1.11	<i>including</i>
ZDDH0010	149.00	159.00	10.00	1.07	<i>including</i>
ZDDH0011	176.00	274.30	98.30	1.58	
ZDDH0011	181.70	212.00	30.30	3.03	<i>including</i>
ZDDH0011	196.40	212.00	15.60	3.87	<i>including</i>
ZDDH0011	203.00	203.70	0.70	21.70	<i>including</i>
ZDDH0011	203.00	212.00	9.00	5.07	<i>including</i>
ZDDH0011	217.00	222.00	5.00	4.13	<i>including</i>
ZDDH0011	246.60	256.40	9.80	2.28	<i>including</i>
ZDDH0012	0.00	58.80	58.80	1.70	
ZDDH0012	1.70	22.00	20.30	4.50	<i>including</i>
ZDDH0012	1.70	8.40	6.70	12.21	<i>including</i>
ZDDH0012	2.30	4.70	2.40	33.35	<i>including</i>
ZDDH0012	17.60	22.00	4.40	2.00	<i>including</i>
ZDDH0012	17.60	20.00	2.40	2.82	<i>including</i>
ZDDH0012	53.20	58.80	5.60	0.95	
ZDDH0012	53.20	56.00	2.80	1.42	<i>including</i>
ZDDH0012	151.80	152.20	0.40	2.29	
ZDDH0013	0.00	3.00	3.00	0.83	
ZDDH0013	9.00	14.30	5.30	0.41	
ZDDH0013	25.00	29.80	4.80	0.72	
ZDDH0013	28.55	29.80	1.25	2.14	<i>including</i>
ZDDH0013	46.30	70.00	23.70	0.85	
ZDDH0013	46.30	51.50	5.20	1.24	<i>including</i>
ZDDH0013	51.25	65.35	14.10	1.08	<i>including</i>
ZDDH0013	58.00	65.35	7.35	1.65	<i>including</i>
ZDDH0013	102.00	104.00	2.00	0.79	
ZDDH0013	136.00	137.30	1.30	4.97	
ZDDH0013	165.00	173.60	8.60	1.60	
ZDDH0013	170.40	173.00	2.60	2.80	<i>including</i>
ZDDH0014	15.30	70.60	55.30	1.01	
ZDDH0014	15.30	34.00	18.70	2.19	<i>including</i>
ZDDH0014	15.30	26.30	11.00	3.40	<i>including</i>
ZDDH0014	23.00	26.30	3.30	6.18	<i>including</i>
ZDDH0014	64.60	70.60	6.00	2.03	<i>including</i>
ZDDH0014	64.60	67.35	2.75	5.00	<i>including</i>
ZDDH0014	112.00	122.50	10.50	0.52	
ZDDH0014	115.00	117.00	2.00	1.75	<i>including</i>
ZDDH0014	177.20	179.00	1.80	2.37	
ZDDH0015	37.90	39.70	1.80	1.11	
ZDDH0015	91.90	132.70	40.80	0.37	
ZDDH0015	91.90	94.60	2.70	1.64	<i>including</i>
ZDDH0015	112.00	116.00	4.00	1.13	<i>including</i>
ZDDH0015	240.60	242.00	1.40	8.46	
ZDDH0015	265.90	269.00	3.10	0.64	
ZDDH0016	125.00	131.72	6.72	1.47	
ZDDH0016	152.00	204.60	52.60	0.62	
ZDDH0016	188.10	194.00	5.90	3.30	<i>including</i>
ZDDH0016	188.58	188.90	0.32	31.30	<i>including</i>
ZDDH0016	203.60	204.60	1.00	3.00	<i>including</i>
ZDDH0016	281.00	290.00	9.00	0.36	
ZDDH0016	287.50	290.00	2.50	0.77	<i>including</i>

ASX Announcement 22 March 2022

Hole_ID	From (m)	To (m)	Interval	Au (g/t)	Comments
ZDDH0017	44.00	74.00	30.00	0.94	
ZDDH0017	44.00	60.10	16.10	1.05	including
ZDDH0017	44.00	47.00	3.00	4.27	including
ZDDH0017	70.00	74.00	4.00	4.26	including
ZDDH0017	103.46	105.60	2.14	1.76	
ZDDH0017	167.55	254.00	86.45	2.29	including
ZDDH0017	182.70	233.20	50.50	3.63	including
ZDDH0017	183.22	206.22	23.00	7.20	including
ZDDH0017	190.00	205.00	15.00	10.82	including
ZDDH0017	197.00	202.30	5.30	25.31	including
ZDDH0017	200.00	202.30	2.30	46.41	including
ZDDH0018	187.27	222.00	34.73	2.94	
ZDDH0018	187.27	211.00	23.73	4.09	including
ZDDH0018	197.00	199.70	2.70	22.21	including
ZDDH0018	189.00	204.00	15.00	5.99	including
ZDDH0019	21.00	89.52	68.52	0.47	
ZDDH0019	36.00	45.00	9.00	1.34	including
ZDDH0019	74.00	79.00	5.00	1.23	including
ZDDH0020	87.30	87.60	0.30	3.33	
ZDDH0021	100.92	116.50	15.58	0.95	
ZDDH0021	107.50	112.00	4.50	1.24	including
ZDDH0021	100.92	101.70	0.78	8.44	including
ZDDH0021	189.25	208.50	19.25	2.86	open downhole
ZDDH0021	189.25	201.30	12.05	4.25	including
ZDDH0021	189.25	195.40	6.15	7.37	including
ZDDH0021	193.90	195.40	1.50	20.82	including
ZDDH0022	30.00	31.00	1.00	3.16	
ZDDH0022	78.00	119.17	41.17	1.38	
ZDDH0022	94.40	95.45	1.05	2.98	including
ZDDH0022	105.00	119.17	14.17	3.25	including
ZDDH0022	105.00	110.32	5.32	6.54	including
ZDDH0023	146.70	151.00	4.30	7.25	
ZDDH0023	146.70	149.00	2.30	13.30	including
ZDDH0023	273.00	277.00	4.00	1.06	
ZDDH0023	276.00	277.00	1.00	3.32	including
ZDDH0024	6.00	9.00	3.00	1.63	
ZDDH0024	41.00	78.00	37.00	0.86	
ZDDH0024	41.00	45.50	4.50	2.12	including
ZDDH0024	44.10	45.50	1.40	5.93	including
ZDDH0024	54.50	57.00	2.50	1.87	including
ZDDH0024	56.50	69.50	13.00	1.12	including
ZDDH0024	66.00	69.50	3.50	2.53	including
ZDDH0024	155.00	169.00	14.00	3.06	
ZDDH0024	162.20	163.50	1.30	19.72	including
ZDDH0024	161.80	167.00	5.20	6.97	including
ZDDH0025	49.00	170.55	121.55	1.32	
ZDDH0025	73.10	84.00	10.90	4.57	including
ZDDH0025	75.00	82.00	7.00	6.14	including
ZDDH0025	104.00	118.00	14.00	1.63	including
ZDDH0025	110.00	113.60	3.60	4.97	including
ZDDH0025	148.00	160.27	12.27	4.98	including
ZDDH0025	148.00	170.55	22.55	2.98	including
ZDDH0025	155.20	159.90	4.70	10.69	including
ZDDH0026	92.00	110.00	18.00	1.36	
ZDDH0026	105.40	110.00	4.60	4.99	including
ZDDH0026	233.00	242.00	9.00	1.85	
ZDDH0026	240.00	242.00	2.00	7.31	including
ZDDH0027	176.00	206.50	30.50	0.40	
ZDDH0027	176.00	202.00	26.00	0.44	including
ZDDH0027	176.00	188.00	12.00	0.64	including
ZDDH0027	176.00	182.00	6.00	1.21	including

Hole_ID	From (m)	To (m)	Interval	Au (g/t)	Comments
ZDDH0028	14.00	14.75	0.75	3.23	
ZDDH0028	21.00	28.00	7.00	0.85	
ZDDH0028	25.00	25.90	0.90	5.03	including
ZDDH0028	42.00	49.00	7.00	0.61	
ZDDH0028	43.90	45.00	1.10	1.10	including
ZDDH0029	29.50	243.00	213.50	0.73	
ZDDH0029	29.50	93.00	63.50	1.81	including
ZDDH0029	29.50	31.20	1.70	1.20	including
ZDDH0029	43.00	48.00	5.00	2.76	including
ZDDH0029	56.64	61.84	5.20	3.36	including
ZDDH0029	72.00	80.00	8.00	1.24	including
ZDDH0029	91.00	93.00	2.00	33.00	including
ZDDH0029	121.00	130.70	9.70	0.53	
ZDDH0029	121.00	122.00	1.00	3.20	including
ZDDH0029	166.30	195.00	28.70	0.82	
ZDDH0029	180.00	195.00	15.00	1.33	including
ZDDH0030	5.20	6.40	1.20	0.74	
ZDDH0030	50.00	76.00	26.00	0.69	
ZDDH0030	66.00	76.00	10.00	1.54	including
ZDDH0030	66.00	71.10	5.10	2.64	including
ZDDH0030	66.00	67.00	1.00	6.89	including
ZDDH0030	70.00	71.10	1.10	5.73	including
ZDDH0030	101.00	102.50	1.50	1.13	
ZDDH0030	117.00	120.00	3.00	3.23	
ZDDH0030	117.00	119.13	2.13	4.15	including
ZDDH0030	165.00	167.00	2.00	4.05	
ZDDH0030	195.40	199.00	3.60	1.41	open downhole
ZDDH0030	202.95	203.90	0.95	5.12	open downhole
ZDDH0031	72.00	303.00	231.00	0.83	
ZDDH0031	72.00	126.00	54.00	1.69	
ZDDH0031	72.00	75.60	3.60	1.27	including
ZDDH0031	100.00	104.44	4.44	1.04	including
ZDDH0031	100.00	125.00	25.00	3.36	including
ZDDH0031	118.30	125.00	6.70	11.57	including
ZDDH0031	146.40	154.00	7.60	0.79	including
ZDDH0031	171.60	173.00	1.40	1.40	including
ZDDH0031	193.30	217.60	24.30	2.43	including
ZDDH0031	193.30	208.00	14.70	3.77	including
ZDDH0031	193.30	197.00	3.70	4.16	including
ZDDH0031	204.34	217.60	13.26	3.25	including
ZDDH0031	204.34	208.00	3.66	10.76	including
ZDDH0031	228.00	229.00	1.00	2.17	including
ZDDH0031	248.00	263.90	15.90	1.04	including
ZDDH0031	291.00	295.00	4.00	1.00	including
ZDDH0032	3.20	6.00	2.80	1.23	
ZDDH0032	17.30	18.30	1.00	7.09	
ZDDH0032	43.50	44.00	0.50	5.70	
ZDDH0032	75.00	76.00	1.00	5.02	
ZDDH0032	128.00	204.00	76.00	0.93	
ZDDH0032	128.00	140.00	12.00	1.39	including
ZDDH0032	132.63	135.00	2.37	4.30	including
ZDDH0032	157.00	162.00	5.00	2.41	including
ZDDH0032	171.00	174.80	3.80	1.92	including
ZDDH0032	178.30	197.00	18.70	1.57	including
ZDDH0032	178.30	179.40	1.10	5.15	including
ZDDH0032	191.00	197.00	6.00	2.58	including
ZDDH0033	40.00	68.00	28.00	1.22	
ZDDH0033	57.00	67.00	10.00	3.17	including
ZDDH0033	59.00	63.00	4.00	5.96	including
ZDDH0033	100.00	104.00	4.00	1.51	
ZDDH0033	134.70	137.00	2.30	1.27	
ZDDH0033	143.00	144.00	1.00	1.45	

Hole_ID	From (m)	To (m)	Interval	Au (g/t)	Comments
ZDDH0034	17.00	28.00	11.00	0.79	
ZDDH0034	23.00	24.00	1.00	4.59	<i>including</i>
ZDDH0034	27.00	28.00	1.00	1.77	<i>including</i>
ZDDH0034	62.22	63.34	1.12	2.85	
ZDDH0034	87.00	92.84	5.84	1.12	
ZDDH0034	89.00	91.00	2.00	2.45	
ZDDH0034	105.40	106.00	0.60	1.15	
ZDDH0034	116.00	117.00	1.00	1.17	
ZDDH0034	172.00	173.00	1.00	1.68	
ZDDH0034	180.40	181.50	1.10	6.58	
ZDDH0034	193.00	194.00	1.00	2.73	
ZDDH0034	202.00	203.00	1.00	2.12	
ZDDH0035	67.00	68.00	1.00	2.67	
ZDDH0035	81.10	110.34	29.24	1.05	
ZDDH0035	89.00	94.00	5.00	4.11	<i>including</i>
ZDDH0035	84.00	106.00	22.00	1.34	<i>including</i>
ZDDH0035	144.00	155.00	11.00	1.15	
ZDDH0035	153.00	155.00	2.00	4.41	<i>including</i>
ZDDH0035	162.00	164.00	2.00	1.03	
ZDDH0035	199.00	200.00	1.00	1.76	
ZDDH0035	192.00	238.00	46.00	0.72	
ZDDH0035	224.00	238.00	14.00	1.86	<i>including</i>
ZDDH0035	224.00	233.00	9.00	2.59	<i>including</i>
ZDDH0035	277.00	278.00	1.00	1.63	
ZDDH0036	74.00	125.00	51.00	1.07	
ZDDH0036	74.00	96.00	22.00	2.16	<i>including</i>
ZDDH0036	88.30	96.00	7.70	5.04	<i>including</i>
ZDDH0036	104.00	105.00	1.00	2.33	<i>including</i>
ZDDH0036	114.00	115.00	1.00	2.84	<i>including</i>
ZDDH0036	165.00	166.00	1.00	1.11	
ZDDH0036	215.00	216.00	1.00	1.60	
ZDDH0037	42.00	65.00	23.00	0.40	
ZDDH0037	42.00	42.68	0.68	1.55	<i>including</i>
ZDDH0037	56.00	65.00	9.00	0.70	<i>including</i>
ZDDH0037	56.00	57.00	1.00	2.47	<i>including</i>
ZDDH0037	62.00	64.00	2.00	1.32	<i>including</i>
ZDDH0037	149.00	172.00	23.00	0.82	
ZDDH0037	149.00	154.00	5.00	1.47	<i>including</i>
ZDDH0037	162.00	172.00	10.00	0.92	<i>including</i>
ZDDH0037	162.00	168.00	6.00	1.04	<i>including</i>
ZDDH0038	23.00	24.00	1.00	3.12	
ZDDH0038	74.20	113.00	38.80	0.49	
ZDDH0038	74.20	77.00	2.80	2.06	<i>including</i>
ZDDH0038	92.00	93.00	1.00	4.39	<i>including</i>
ZDDH0038	105.00	106.00	1.00	2.11	<i>including</i>
ZDDH0038	148.00	152.00	4.00	1.17	<i>including</i>
ZDDH0038	178.00	186.00	8.00	0.50	
ZDDH0038	185.00	186.00	1.00	2.48	<i>including</i>
ZDDH0038	200.00	208.10	8.10	1.12	<i>including</i>
ZDDH0038	202.00	204.00	2.00	3.72	<i>including</i>
ZDDH0039	2.50	5.60	3.10	0.39	
ZDDH0039	78.70	81.00	2.30	1.43	
ZDDH0039	188.00	252.50	64.50	0.47	
ZDDH0039	212.00	232.00	20.00	0.84	<i>including</i>
ZDDH0039	212.00	218.00	6.00	1.49	<i>including</i>
ZDDH0039	226.00	227.00	1.00	3.86	<i>including</i>
ZDDH0039	237.00	238.00	1.00	2.30	<i>including</i>
ZDDH0039	268.00	269.00	1.00	1.62	<i>including</i>
ZDDH0040	136.00	197.00	61.00	0.75	
ZDDH0040	136.00	152.00	16.00	1.96	<i>including</i>
ZDDH0040	136.00	146.00	10.00	2.61	<i>including</i>
ZDDH0040	142.00	146.00	4.00	5.34	<i>including</i>
ZDDH0040	160.00	164.00	4.00	0.95	<i>including</i>
ZDDH0040	161.00	162.00	1.00	2.84	<i>including</i>
ZDDH0040	182.00	188.00	6.00	0.72	<i>including</i>
ZDDH0040	195.00	197.00	2.00	2.75	<i>including</i>
ZDDH0040	288.00	291.00	3.00	1.24	<i>including</i>
ZDDH0041	2.00	12.00	10.00	0.55	
ZDDH0041	6.00	8.00	2.00	1.33	<i>including</i>
ZDDH0041	23.50	52.00	28.50	0.38	
ZDDH0041	23.50	32.00	8.50	0.48	<i>including</i>
ZDDH0041	29.00	32.00	3.00	0.99	<i>including</i>

Hole_ID	From (m)	To (m)	Interval	Au (g/t)	Comments
ZDDH0041	40.00	46.00	6.00	0.61	
ZDDH0041	106.20	108.00	1.80	3.49	
ZDDH0041	127.50	128.00	0.50	29.90	
ZDDH0041	140.00	145.00	5.00	5.91	
ZDDH0041	141.65	143.50	1.85	15.22	<i>including</i>
ZDDH0042	112.00	127.00	15.00	0.68	
ZDDH0042	126.00	127.00	1.00	5.64	<i>including</i>
ZDDH0043	5.30	56.00	50.70	0.45	
ZDDH0043	5.30	22.50	17.20	0.94	<i>including</i>
ZDDH0043	9.50	13.00	3.50	3.44	<i>including</i>
ZDDH0043	80.00	105.00	25.00	0.41	
ZDDH0043	81.00	85.00	4.00	0.87	<i>including</i>
ZDDH0043	103.00	105.00	2.00	1.60	<i>including</i>
ZDDH0043	241.00	242.00	1.00	1.02	
ZDDH0044	104.00	107.00	3.00	0.92	
ZDDH0044	104.00	105.00	1.00	2.25	<i>including</i>
ZDDH0045	23.00	50.00	27.00	0.59	
ZDDH0045	36.00	46.20	10.20	1.07	<i>including</i>
ZDDH0045	36.00	40.00	4.00	1.80	<i>including</i>
ZDDH0045	97.00	98.00	1.00	1.91	
ZDDH0045	196.30	203.00	6.70	1.10	
ZDDH0045	197.00	198.50	1.50	3.21	<i>including</i>
ZDDH0045	196.30	199.00	2.70	2.70	<i>including</i>
ZDDH0046	17.60	39.00	21.40	1.17	
ZDDH0046	26.00	31.00	5.00	3.75	<i>including</i>
ZDDH0046	28.00	31.00	3.00	5.71	<i>including</i>
ZDDH0046	180.00	181.00	1.00	1.11	
ZDDH0046	223.00	224.00	1.00	1.45	
ZDDH0046	248.60	250.00	1.40	1.35	
ZDDH0047	30.00	134.50	104.50	0.56	
ZDDH0047	35.00	36.00	1.00	2.98	<i>including</i>
ZDDH0047	74.00	75.00	1.00	2.03	<i>including</i>
ZDDH0047	97.00	134.80	37.80	1.23	<i>including</i>
ZDDH0047	97.00	109.00	12.00	2.68	<i>including</i>
ZDDH0047	97.00	99.00	2.00	11.00	<i>including</i>
ZDDH0047	130.00	134.80	4.80	2.71	<i>including</i>
ZDDH0047	210.00	211.00	1.00	1.78	
ZDDH0047	288.00	289.00	1.00	1.19	
ZDDH0048	45.00	90.00	45.00	0.54	
ZDDH0048	53.50	54.50	1.00	3.15	<i>including</i>
ZDDH0048	47.00	55.00	8.00	1.02	<i>including</i>
ZDDH0048	80.00	83.00	3.00	4.18	<i>including</i>
ZDDH0049	124.00	235.50	111.50	1.25	
ZDDH0049	124.00	182.00	58.00	2.04	<i>including</i>
ZDDH0049	154.00	181.50	27.50	3.57	<i>including</i>
ZDDH0049	124.00	141.00	17.00	1.11	<i>including</i>
ZDDH0049	124.00	125.00	1.00	10.25	<i>including</i>
ZDDH0049	159.00	172.00	13.00	5.32	<i>including</i>
ZDDH0049	159.00	165.00	6.00	4.17	<i>including</i>
ZDDH0049	177.00	182.00	5.00	5.14	<i>including</i>
ZDDH0049	213.00	235.50	22.50	0.89	<i>including</i>
ZDDH0049	215.00	218.00	3.00	1.39	<i>including</i>
ZDDH0049	227.00	235.50	8.50	1.81	<i>including</i>
ZDDH0049	231.00	235.50	4.50	3.07	<i>including</i>
ZDDH0049	245.00	246.00	1.00	1.66	
ZDDH0049	285.00	286.00	1.00	3.81	
ZDDH0049	290.00	291.00	1.00	1.12	
ZDDH0050	6.00	16.00	10.00	1.56	
ZDDH0050	7.00	8.00	1.00	10.65	<i>including</i>
ZDDH0050	92.00	93.00	1.00	2.55	
ZDDH0050	157.00	222.00	65.00	0.84	
ZDDH0050	183.00	185.00	2.00	2.02	<i>including</i>
ZDDH0050	192.00	193.00	1.00	2.35	<i>including</i>
ZDDH0050	202.00	209.00	7.00	5.84	<i>including</i>
ZDDH0050	205.00	207.50	2.50	15.92	<i>including</i>
ZDDH0050	220.00	221.00	1.00	1.27	<i>including</i>

Hole_ID	From (m)	To (m)	Interval	Au (g/t)	Comments	Hole_ID	From (m)	To (m)	Interval	Au (g/t)	Comments
ZDDH0051	249.00	347.00	98.00	0.95		ZDDH0058	34.00	35.00	1.00	1.29	
ZDDH0051	251.00	282.00	31.00	1.55	<i>including</i>	ZDDH0058	237.00	250.00	13.00	0.47	
ZDDH0051	251.00	265.00	14.00	2.71	<i>including</i>	ZDDH0058	237.00	241.00	4.00	0.69	<i>including</i>
ZDDH0051	258.00	264.00	6.00	4.86	<i>including</i>	ZDDH0058	248.00	250.00	2.00	1.49	<i>including</i>
ZDDH0051	260.00	261.00	1.00	27.60	<i>including</i>	ZDDH0059	61.00	62.00	1.00	1.02	
ZDDH0051	264.00	265.00	1.00	9.85	<i>including</i>	ZDDH0059	194.50	282.00	87.50	0.72	
ZDDH0051	303.00	320.00	17.00	1.03	<i>including</i>	ZDDH0059	196.00	244.50	48.50	1.02	<i>including</i>
ZDDH0051	317.00	318.00	1.00	5.99	<i>including</i>	ZDDH0059	207.00	241.60	34.60	1.29	<i>including</i>
ZDDH0051	317.00	332.50	15.50	1.19	<i>including</i>	ZDDH0059	229.00	241.60	12.60	2.21	<i>including</i>
ZDDH0051	328.00	347.00	19.00	1.25	<i>including</i>	ZDDH0059	196.00	198.00	2.00	1.76	<i>including</i>
ZDDH0051	345.00	346.00	1.00	8.25	<i>including</i>	ZDDH0059	207.00	212.00	5.00	1.58	<i>including</i>
ZDDH0052	10.00	11.00	1.00	1.35		ZDDH0059	236.00	241.60	5.60	4.37	<i>including</i>
ZDDH0052	25.00	67.00	42.00	0.44		ZDDH0059	276.00	282.00	6.00	1.48	
ZDDH0052	25.50	26.50	1.00	2.25	<i>including</i>	ZDDH0060	156.00	168.00	12.00	0.44	
ZDDH0052	64.00	68.00	4.00	2.37		ZDDH0060	163.00	166.00	3.00	0.78	<i>including</i>
ZDDH0052	154.00	157.00	3.00	3.27		ZDDH0060	215.00	220.95	5.95	0.37	
ZDDH0052	177.00	178.00	1.00	1.51		ZDDH0061	157.00	158.00	1.00	2.31	
ZDDH0053	7.70	87.00	79.30	0.72		ZDDH0061	194.00	195.00	1.00	0.83	
ZDDH0053	15.00	16.00	1.00	1.20	<i>including</i>	ZDDH0062	8.00	70.00	62.00	0.46	
ZDDH0053	36.00	37.00	1.00	1.12	<i>including</i>	ZDDH0062	8.00	31.00	23.00	0.88	<i>including</i>
ZDDH0053	64.00	87.00	23.00	2.04	<i>including</i>	ZDDH0062	8.00	21.50	13.50	1.12	<i>including</i>
ZDDH0053	64.00	71.00	7.00	4.47	<i>including</i>	ZDDH0062	13.00	15.50	2.50	2.01	<i>including</i>
ZDDH0053	66.00	69.00	3.00	7.89	<i>including</i>	ZDDH0062	18.00	21.50	3.50	1.94	<i>including</i>
ZDDH0053	64.00	80.50	16.50	2.50	<i>including</i>	ZDDH0062	68.00	70.00	2.00	2.40	<i>including</i>
ZDDH0053	134.50	136.86	2.36	1.13		ZDDH0062	110.00	111.00	1.00	1.18	
ZDDH0053	146.00	147.00	1.00	1.87		ZDDH0062	119.00	120.00	1.00	2.36	
ZDDH0053	188.00	191.00	3.00	0.58		ZDDH0062	108.00	201.00	93.00	0.37	
ZDDH0053	240.00	241.00	1.00	1.09		ZDDH0062	129.00	173.00	44.00	0.53	<i>including</i>
ZDDH0053	274.00	281.00	7.00	0.77		ZDDH0062	134.00	141.00	7.00	0.76	<i>including</i>
ZDDH0053	274.00	275.00	1.00	3.65	<i>including</i>	ZDDH0062	162.20	172.00	9.80	1.30	<i>including</i>
ZDDH0053	280.00	281.00	1.00	1.11	<i>including</i>	ZDDH0062	225.00	226.00	1.00	1.40	
ZDDH0054	91.00	110.00	19.00	0.46		ZDDH0062	256.00	280.00	24.00	0.66	
ZDDH0054	104.00	108.00	4.00	1.48	<i>including</i>	ZDDH0062	256.00	261.00	5.00	2.29	<i>including</i>
ZDDH0054	118.50	119.20	0.70	1.72		ZDDH0063	0.00	3.00	3.00	2.26	
ZDDH0054	252.00	253.00	1.00	1.23		ZDDH0063	166.00	332.00	166.00	0.57	
ZDDH0054	280.00	281.00	1.00	8.75		ZDDH0063	169.00	171.00	2.00	1.20	<i>including</i>
ZDDH0054	336.00	337.00	1.00	1.23		ZDDH0063	180.00	210.00	30.00	0.90	<i>including</i>
ZDDH0055	20.00	241.20	221.20	0.62		ZDDH0063	180.00	182.00	2.00	7.52	<i>including</i>
ZDDH0055	21.00	22.00	1.00	3.19	<i>including</i>	ZDDH0063	197.00	210.00	13.00	0.75	<i>including</i>
ZDDH0055	48.00	122.00	74.00	1.05	<i>including</i>	ZDDH0063	277.00	316.00	39.00	1.22	<i>including</i>
ZDDH0055	48.00	88.50	40.50	1.51	<i>including</i>	ZDDH0063	300.00	316.00	16.00	2.96	<i>including</i>
ZDDH0055	48.00	60.12	12.12	4.83	<i>including</i>	ZDDH0063	311.00	316.00	5.00	9.09	<i>including</i>
ZDDH0055	77.00	80.00	3.00	16.88	<i>including</i>	ZDDH0064	102.00	103.70	1.70	1.43	
ZDDH0055	105.00	109.00	4.00	3.04	<i>including</i>	ZDDH0064	188.00	202.00	14.00	0.55	
ZDDH0055	168.00	169.00	1.00	2.00	<i>including</i>	ZDDH0064	192.00	196.00	4.00	1.33	<i>including</i>
ZDDH0055	200.00	241.20	41.20	1.13	<i>including</i>	ZDDH0064	243.00	244.00	1.00	1.11	
ZDDH0055	200.00	233.00	33.00	1.36	<i>including</i>	ZDDH0064	309.00	317.00	8.00	0.78	
ZDDH0055	200.00	201.00	1.00	2.83	<i>including</i>	ZDDH0064	311.00	314.00	3.00	1.53	
ZDDH0055	207.00	208.00	1.00	6.51	<i>including</i>	ZDDH0065	25.00	27.00	2.00	1.25	
ZDDH0055	217.00	231.00	14.00	2.03	<i>including</i>	ZDDH0065	56.40	58.80	2.40	0.78	
ZDDH0055	223.00	231.00	8.00	2.64	<i>including</i>	ZDDH0065	155.00	167.00	12.00	1.72	
ZDDH0055	282.00	326.00	44.00	0.48		ZDDH0066	306.00	465.00	159.00	0.46	<i>including</i>
ZDDH0055	282.00	283.00	1.00	3.91	<i>including</i>	ZDDH0066	306.00	443.00	137.00	0.51	<i>including</i>
ZDDH0055	302.00	308.00	6.00	1.97	<i>including</i>	ZDDH0066	389.00	436.00	47.00	1.00	<i>including</i>
ZDDH0055	319.00	320.00	1.00	1.51	<i>including</i>	ZDDH0066	308.00	310.00	2.00	1.98	<i>including</i>
ZDDH0055	325.00	326.00	1.00	3.77	<i>including</i>	ZDDH0066	357.00	362.00	5.00	1.10	<i>including</i>
ZDDH0056	232.00	236.70	4.70	0.70		ZDDH0066	357.50	361.00	3.50	1.43	<i>including</i>
ZDDH0056	236.00	236.70	0.70	3.09		ZDDH0066	389.00	412.00	23.00	1.09	<i>including</i>
ZDDH0057	22.00	44.00	22.00	1.03		ZDDH0066	389.00	401.00	12.00	1.59	<i>including</i>
ZDDH0057	22.00	23.00	1.00	10.20	<i>including</i>	ZDDH0066	389.00	392.00	3.00	2.97	<i>including</i>
ZDDH0057	22.00	30.00	8.00	1.61	<i>including</i>	ZDDH0066	424.00	443.00	19.00	1.24	<i>including</i>
ZDDH0057	216.00	233.00	17.00	0.55		ZDDH0066	427.00	436.00	9.00	2.14	<i>including</i>
ZDDH0057	225.00	228.00	3.00	1.93	<i>including</i>	ZDDH0067	5.00	64.00	59.00	1.72	
ZDDH0057	274.00	351.00	77.00	1.13							
ZDDH0057	279.00	321.00	42.00	1.97	<i>including</i>						
ZDDH0057	279.00	311.00	32.00	2.32	<i>including</i>						
ZDDH0057	283.00	298.00	15.00	3.25	<i>including</i>						
ZDDH0057	318.00	321.00	3.00	2.75	<i>including</i>						

Hole_ID	From (m)	To (m)	Interval	Au (g/t)	Comments
ZDDH0067	5.00	37.40	32.40	3.05	including
ZDDH0067	31.00	37.00	6.00	15.18	including
ZDDH0067	81.00	82.00	1.00	1.87	
ZDDH0067	91.00	96.00	5.00	0.53	
ZDDH0067	107.00	121.00	14.00	0.47	
ZDDH0067	108.00	109.00	1.00	1.27	including
ZDDH0067	119.00	121.00	2.00	1.17	including
ZDDH0067	136.00	139.00	3.00	2.13	
ZDDH0068	0.00	7.00	7.00	0.45	
ZDDH0068	56.00	117.70	61.70	0.30	
ZDDH0068	60.00	83.00	23.00	0.46	including
ZDDH0068	60.00	61.00	1.00	2.43	including
ZDDH0068	74.00	75.00	1.00	1.14	including
ZDDH0068	114.90	117.70	2.80	0.84	including
ZDDH0068	143.00	154.00	11.00	0.62	
ZDDH0068	152.00	153.00	1.00	1.59	including
ZDDH0068	185.00	186.00	1.00	1.84	
ZDDH0068	189.00	190.00	1.00	1.37	
ZDDH0068	200.00	201.00	1.00	2.03	
ZDDH0068	209.00	210.00	1.00	4.42	
ZDDH0068	225.00	226.00	1.00	1.53	
ZDDH0068	303.00	303.93	0.93	1.14	
ZDDH0069	147.00	414.00	267.00	1.12	
ZDDH0069	221.00	414.00	193.00	1.47	including
ZDDH0069	224.00	404.00	180.00	1.57	including
ZDDH0069	234.00	366.00	132.00	1.89	including
ZDDH0069	147.00	162.00	15.00	0.68	including
ZDDH0069	147.00	152.00	5.00	1.24	including
ZDDH0069	184.00	184.50	0.50	8.69	including
ZDDH0069	234.00	258.00	24.00	1.72	including
ZDDH0069	244.00	248.00	4.00	4.94	including
ZDDH0069	289.00	345.00	56.00	3.49	including
ZDDH0069	292.00	337.00	45.00	4.02	including
ZDDH0069	289.00	322.00	33.00	5.07	including
ZDDH0069	292.00	320.50	28.50	5.68	including
ZDDH0069	314.00	320.50	6.50	7.28	including
ZDDH0069	292.00	303.00	11.00	7.73	including
ZDDH0069	392.50	401.00	8.50	2.49	including
ZDDH0069	398.00	400.00	2.00	7.89	including
ZDDH0070	1.50	24.00	22.50	0.34	
ZDDH0070	10.95	24.00	13.05	0.50	including
ZDDH0070	18.00	21.50	3.50	0.98	including
ZDDH0070	155.00	156.00	1.00	2.28	
ZDDH0071	25.00	96.00	71.00	0.80	
ZDDH0071	41.00	43.00	2.00	1.96	including
ZDDH0071	62.79	70.00	7.21	1.04	including
ZDDH0071	67.00	70.00	3.00	1.98	including
ZDDH0071	88.00	96.00	8.00	4.18	including
ZDDH0071	89.75	95.00	5.25	5.97	including
ZDDH0071	133.00	149.50	16.50	0.36	
ZDDH0071	139.00	146.50	7.50	0.55	including
ZDDH0071	255.00	255.50	0.50	2.69	
ZDDH0072	356.00	396.00	40.00	0.69	
ZDDH0072	366.20	372.20	6.00	1.89	including
ZDDH0072	366.20	368.00	1.80	5.50	including
ZDDH0072	383.00	384.00	1.00	5.01	including
ZDDH0072	393.00	394.00	1.00	8.39	including
ZDDH0073	21.40	23.00	1.60	0.62	
ZDDH0073	69.00	70.00	1.00	3.33	
ZDDH0073	93.00	95.00	2.00	2.04	
ZDDH0073	179.00	180.00	1.00	2.73	
ZDDH0073	207.00	285.00	78.00	0.41	
ZDDH0073	207.00	209.00	2.00	7.42	including
ZDDH0073	207.00	232.06	25.06	0.74	including
ZDDH0073	279.00	279.50	0.50	13.80	including
ZDDH0074	89.00	116.00	27.00	1.16	
ZDDH0074	89.00	94.00	5.00	2.15	including
ZDDH0074	114.00	116.00	2.00	8.06	including

Hole_ID	From (m)	To (m)	Interval	Au (g/t)	Comments
ZDDH0075	76.00	335.90	259.90	0.70	
ZDDH0075	89.00	309.00	220.00	0.86	including
ZDDH0075	97.00	100.00	3.00	2.63	including
ZDDH0075	124.00	127.00	3.00	2.40	including
ZDDH0075	137.00	140.00	3.00	1.49	including
ZDDH0075	153.50	155.00	1.50	5.99	including
ZDDH0075	178.00	187.00	9.00	1.02	including
ZDDH0075	217.00	220.00	3.00	1.18	including
ZDDH0075	236.00	238.00	2.00	1.56	including
ZDDH0075	249.00	251.00	2.00	1.03	including
ZDDH0075	270.00	309.00	39.00	2.73	including
ZDDH0075	270.00	296.00	26.00	3.54	including
ZDDH0075	270.00	285.50	15.50	5.49	including
ZDDH0075	304.00	309.00	5.00	2.72	including
ZDDH0075	328.00	338.80	10.80	1.44	including
ZDDH0075	336.00	338.80	2.80	4.97	including
ZDDH0076	145.00	146.00	1.00	0.57	
ZDDH0077	65.00	82.00	17.00	0.54	
ZDDH0077	74.00	78.00	4.00	1.13	including
ZDDH0077	69.60	70.60	1.00	1.91	including
ZDDH0077	121.70	122.50	0.80	1.56	
ZDDH0078	214.00	225.00	11.00	0.67	
ZDDH0078	214.33	216.00	1.67	3.46	including
ZDDH0078	263.00	265.00	2.00	1.54	
ZDDH0078	391.00	393.00	2.00	0.92	
ZDDH0079	33.00	34.00	1.00	1.33	
ZDDH0079	70.20	72.10	1.90	1.56	
ZDDH0079	165.60	166.00	0.40	4.26	
ZDDH0079	256.00	257.00	1.00	2.14	
ZDDH0079	272.00	273.00	1.00	1.26	
ZDDH0079	288.00	295.00	7.00	0.91	
ZDDH0079	290.00	294.00	4.00	1.19	including
ZDDH0080	108.00	121.00	13.00	1.17	
ZDDH0080	115.50	120.00	4.50	3.08	including
ZDDH0080	141.00	143.00	2.00	0.98	
ZDDH0080	254.50	255.00	0.50	1.19	
ZDDH0080	285.05	293.00	7.95	0.46	
ZDDH0080	286.00	287.50	1.50	1.01	including
ZDDH0081	82.00	110.00	28.00	1.90	
ZDDH0081	82.00	91.00	9.00	3.76	including
ZDDH0081	82.00	84.00	2.00	10.95	including
ZDDH0081	88.50	91.00	2.50	4.63	including
ZDDH0081	104.00	110.00	6.00	2.91	including
ZDDH0081	104.00	106.00	2.00	7.45	including
ZDDH0081	201.00	202.00	1.00	1.62	
ZDDH0082	151.00	153.00	2.00	3.30	
ZDDH0082	273.00	303.00	30.00	0.33	
ZDDH0082	294.00	295.00	1.00	2.88	
ZDDH0082	301.00	303.00	2.00	2.43	
ZDDH0083	180.00	190.10	10.10	0.92	
ZDDH0083	180.00	184.00	4.00	1.85	including
ZDDH0083	264.00	288.00	24.00	1.63	
ZDDH0083	273.00	288.00	15.00	2.55	including
ZDDH0083	273.00	280.00	7.00	4.48	including
ZDDH0083	276.00	280.00	4.00	7.25	including
ZDDH0083	336.00	339.00	3.00	1.21	
ZDDH0083	362.00	363.00	1.00	3.57	
ZDDH0083	395.00	409.00	14.00	1.11	
ZDDH0083	401.00	407.00	6.00	2.12	including
ZDDH0084	118.30	203.97	85.67	1.42	
ZDDH0084	124.00	144.70	20.70	3.81	including
ZDDH0084	125.00	136.00	11.00	5.49	including
ZDDH0084	162.00	169.50	7.50	3.85	including

Hole_ID	From (m)	To (m)	Interval	Au (g/t)	Comments
ZDDH0085	22.00	24.00	2.00	1.94	
ZDDH0085	85.00	153.00	68.00	0.47	
ZDDH0085	85.00	87.00	2.00	2.34	including
ZDDH0085	141.65	153.00	11.35	2.19	
ZDDH0085	147.00	151.00	4.00	5.38	
ZDDH0085	185.00	186.00	1.00	1.62	
ZDDH0085	219.00	318.00	99.00	0.49	
ZDDH0085	219.00	224.00	5.00	2.40	including
ZDDH0085	250.00	256.00	6.00	2.25	including
ZDDH0085	265.60	269.00	3.40	1.42	including
ZDDH0085	290.00	292.00	2.00	1.69	including
ZDDH0085	307.00	309.00	2.00	1.46	including
ZDDH0085	312.00	313.00	1.00	1.48	including
ZDDH0086	15.00	16.00	1.00	0.58	
ZDDH0086	36.00	38.00	2.00	0.30	
ZDDH0086	128.00	129.00	1.00	0.90	
ZDDH0086	135.00	137.00	2.00	0.51	
ZDDH0087	86.00	190.00	104.00	0.76	
ZDDH0087	86.00	131.00	45.00	1.57	including
ZDDH0087	86.00	116.00	30.00	2.24	including
ZDDH0087	90.00	107.00	17.00	3.62	including
ZDDH0087	187.00	189.00	2.00	1.12	
ZDDH0088	9.00	10.00	1.00	0.48	
ZDDH0088	22.50	23.50	1.00	0.49	
ZDDH0088	39.80	40.50	0.70	0.97	
ZDDH0088	90.00	92.00	2.00	0.57	
ZDDH0088	133.50	134.00	0.50	0.91	
ZDDH0088	180.00	181.00	1.00	69.70	
ZDDH0089	28.45	37.00	8.55	0.37	
ZDDH0089	29.00	33.00	4.00	0.49	
ZDDH0090	23.00	24.00	1.00	0.89	
ZDDH0090	43.00	83.00	40.00	0.53	
ZDDH0090	60.00	78.00	18.00	1.05	including
ZDDH0090	60.00	69.00	9.00	1.35	including
ZDDH0090	148.00	182.00	34.00	0.44	
ZDDH0090	148.00	149.00	1.00	1.86	including
ZDDH0090	157.00	159.00	2.00	5.42	including
ZDDH0090	223.00	224.00	1.00	3.99	
ZDDH0091	36.00	40.00	4.00	8.04	
ZDDH0091	36.00	38.00	2.00	14.44	including
ZDDH0091	73.00	85.50	12.50	0.33	
ZDDH0091	83.00	84.50	1.50	1.42	including
ZDDH0091	125.00	131.00	6.00	0.34	
ZDDH0091	172.00	173.00	1.00	0.47	
ZDDH0092	45.00	46.00	1.00	2.24	
ZDDH0092	86.00	87.00	1.00	10.88	
ZDDH0092	121.00	123.94	2.94	1.11	
ZDDH0092	282.00	382.00	100.00	0.48	
ZDDH0092	282.00	292.00	10.00	1.43	including
ZDDH0092	305.00	326.00	21.00	0.58	including
ZDDH0092	311.00	319.00	8.00	1.08	including
ZDDH0092	331.00	332.00	1.00	1.12	including
ZDDH0092	369.00	371.00	2.00	2.31	including
ZDDH0092	378.00	379.00	1.00	1.25	including
ZDDH0093	25.60	27.05	1.45	15.94	
ZDDH0093	116.00	117.00	1.00	1.85	
ZDDH0093	132.00	150.00	18.00	0.51	
ZDDH0093	136.00	142.00	6.00	1.16	including
ZDDH0093	165.00	175.00	10.00	0.74	
ZDDH0093	170.00	173.00	3.00	1.86	including
ZDDH0093	190.47	194.18	3.71	0.79	
ZDDH0093	268.00	270.00	2.00	1.10	
ZDDH0093	279.00	304.00	25.00	0.77	
ZDDH0093	279.00	281.00	2.00	1.40	including
ZDDH0093	290.00	304.00	14.00	1.08	including
ZDDH0093	298.00	304.00	6.00	2.24	including

Hole_ID	From (m)	To (m)	Interval	Au (g/t)	Comments
ZDDH0094	37.00	40.00	3.00	2.41	
ZDDH0094	83.49	105.00	21.51	0.71	
ZDDH0094	86.30	91.00	4.70	1.02	
ZDDH0094	100.00	105.00	5.00	1.64	
ZDDH0094	298.00	346.00	48.00	0.67	
ZDDH0094	298.00	299.00	1.00	1.54	including
ZDDH0094	319.00	323.00	4.00	6.45	including
ZDDH0094	343.00	344.00	1.00	1.03	including
ZDDH0094	375.00	375.50	0.50	1.51	
ZDDH0095	106.00	108.00	2.00	0.62	
ZDDH0095	135.95	136.50	0.55	1.52	
ZDDH0095	212.50	224.00	11.50	1.13	
ZDDH0095	212.50	214.07	1.57	7.37	including
ZDDH0096	29.00	47.00	18.00	0.46	
ZDDH0096	39.00	46.00	7.00	0.79	including
ZDDH0096	112.00	113.50	1.50	0.98	
ZDDH0096	155.00	157.50	2.50	0.83	
ZDDH0096	185.00	187.00	2.00	1.59	
ZDDH0096	190.00	191.00	1.00	1.41	
ZDDH0096	261.00	267.00	6.00	0.64	
ZDDH0096	261.00	262.00	1.00	2.21	including
ZDDH0097	9.00	10.00	1.00	2.95	
ZDDH0097	89.00	90.00	1.00	2.15	
ZDDH0098	1.20	3.00	1.80	1.25	
ZDDH0098	74.00	124.00	50.00	1.73	
ZDDH0098	74.00	76.00	2.00	13.95	including
ZDDH0098	97.00	103.00	6.00	8.47	including
ZDDH0098	166.00	203.00	37.00	0.62	
ZDDH0098	168.15	172.82	4.67	1.88	including
ZDDH0098	190.00	203.00	13.00	0.98	including
ZDDH0098	199.00	203.00	4.00	2.40	including
ZDDH0099	10.00	11.00	1.00	3.57	
ZDDH0099	90.80	157.00	66.20	0.53	
ZDDH0099	96.00	111.00	15.00	1.36	
ZDDH0099	138.00	139.00	1.00	1.13	
ZDDH0099	148.00	148.80	0.80	3.43	
ZDDH0099	178.00	178.90	0.90	6.53	
ZDDH0099	251.00	252.00	1.00	1.11	
ZDDH0099	319.40	328.00	8.60	0.58	
ZDDH0099	319.40	322.00	2.60	1.32	
ZDDH0099	342.00	343.00	1.00	1.13	
ZDDH0100	8.00	9.00	1.00	1.08	
ZDDH0100	21.00	56.00	35.00	1.07	
ZDDH0100	29.10	54.50	25.40	1.39	including
ZDDH0100	29.10	31.00	1.90	10.30	including
ZDDH0100	105.00	106.00	1.00	5.86	
ZDDH0100	144.50	157.00	12.50	0.75	
ZDDH0100	147.00	148.00	1.00	4.99	including
ZDDH0100	155.00	157.00	2.00	1.51	including
ZDDH0100	193.00	194.00	1.00	1.45	
ZDDH0101	80.00	81.87	1.87	0.82	
ZDDH0101	133.00	202.00	69.00	0.95	
ZDDH0101	133.00	180.00	47.00	1.21	including
ZDDH0101	136.00	159.40	23.40	1.76	including
ZDDH0101	196.00	197.00	1.00	4.14	including
ZDDH0101	258.00	286.56	28.56	1.30	
ZDDH0101	275.50	285.00	9.50	3.05	including
ZDDH0101	280.00	284.00	4.00	5.94	including
ZDDH0102	187.50	202.00	14.50	0.28	
ZDDH0102	189.00	190.00	1.00	1.46	including
ZDDH0103	4.50	9.00	4.50	0.35	
ZDDH0103	31.20	31.60	0.40	3.48	
ZDDH0103	88.00	102.00	14.00	1.42	
ZDDH0103	88.00	93.60	5.60	3.01	including

Hole_ID	From (m)	To (m)	Interval	Au (g/t)	Comments
ZDDH0103	133.00	133.76	0.76	1.50	
ZDDH0103	140.00	141.00	1.00	4.26	
ZDDH0103	168.00	180.00	12.00	0.40	
ZDDH0103	178.70	180.00	1.30	1.76	including
ZDDH0103	226.00	228.00	2.00	0.56	
ZDDH0104	174.91	216.00	41.09	0.95	
ZDDH0104	174.91	197.00	22.09	1.50	including
ZDDH0104	183.00	197.00	14.00	1.87	including
ZDDH0105	284.00	285.00	1.00	0.69	
ZDDH0105	375.00	376.00	1.00	7.55	
ZDDH0105	414.00	415.00	1.00	1.12	
ZDDH0107	14.10	16.28	2.18	1.15	
ZDDH0107	35.70	48.00	12.30	0.70	
ZDDH0107	37.00	39.00	2.00	2.31	including
ZDDH0107	46.00	48.00	2.00	1.08	
ZDDH0107	359.00	382.00	23.00	0.57	
ZDDH0107	372.00	381.00	9.00	1.16	including
ZDDH0107	353.00	354.00	1.00	1.28	
ZDDH0108	25.00	26.00	1.00	0.52	
ZDDH0108	53.70	142.00	88.30	0.30	
ZDDH0108	60.00	61.00	1.00	3.95	
ZDDH0108	72.41	76.00	3.59	1.22	
ZDDH0108	90.00	93.00	3.00	2.17	
ZDDH0108	114.00	114.40	0.40	1.24	
ZDDH0109	195.00	266.00	71.00	0.47	
ZDDH0109	195.00	222.00	27.00	0.95	including
ZDDH0109	195.00	207.00	12.00	1.39	including
ZDDH0109	220.00	221.40	1.40	5.91	including
ZDDH0109	291.00	294.00	3.00	1.57	
ZDDH0109	299.00	300.00	1.00	1.09	
ZDDH0109	328.00	329.00	1.00	1.52	
ZDDH0109	364.00	365.00	1.00	4.85	
ZDDH0109	411.00	412.00	1.00	0.99	
ZDDH0110	80.00	100.00	20.00	1.48	
ZDDH0110	80.00	92.00	12.00	1.99	including
ZDDH0110	82.50	88.00	5.50	3.37	including
ZDDH0110	114.00	120.00	6.00	0.53	
ZDDH0110	117.00	118.00	1.00	1.39	including
ZDDH0110	186.00	187.00	1.00	1.10	
ZDDH0110	194.00	195.00	1.00	1.33	
ZDDH0111	8.00	130.00	122.00	0.43	
ZDDH0111	8.00	10.00	2.00	0.71	including
ZDDH0111	19.00	27.00	8.00	0.65	including
ZDDH0111	21.00	22.00	1.00	2.30	including
ZDDH0111	27.00	28.00	1.00	1.57	including
ZDDH0111	43.00	54.00	11.00	0.34	including
ZDDH0111	85.00	86.00	1.00	3.01	including
ZDDH0111	98.00	109.00	11.00	2.16	including
ZDDH0111	120.00	125.00	5.00	1.35	including
ZDDH0112	130.00	132.00	2.00	0.47	
ZDDH0112	154.00	155.00	1.00	11.90	
ZDDH0112	240.00	241.00	1.00	1.08	
ZDDH0113	84.00	89.00	5.00	2.45	
ZDDH0113	84.00	85.50	1.50	7.85	including
ZDDH0113	230.00	231.10	1.10	0.85	
ZDDH0114	26.50	27.20	0.70	0.40	
ZDDH0114	47.20	53.00	5.80	0.47	
ZDDH0114	49.00	51.00	2.00	0.85	
ZDDH0114	69.00	71.00	2.00	0.44	
ZDDH0114	97.00	106.90	9.90	0.57	
ZDDH0114	103.00	105.00	2.00	1.74	including
ZDDH0114	164.00	165.00	1.00	1.00	
ZDDH0114	223.00	229.00	6.00	2.29	
ZDDH0114	224.00	227.00	3.00	4.36	including

Hole_ID	From (m)	To (m)	Interval	Au (g/t)	Comments
ZDDH0115	235.00	236.00	1.00	0.43	
ZDDH0115	311.00	318.00	7.00	1.00	
ZDDH0115	312.00	313.00	1.00	3.33	
ZDDH0116	59.00	60.00	1.00	5.76	
ZDDH0116	65.88	67.27	1.39	0.49	
ZDDH0117	162.00	163.00	1.00	1.20	
ZDDH0117	190.80	201.00	10.20	0.65	
ZDDH0117	190.80	191.50	0.70	5.03	including
ZDDH0117	198.00	201.00	3.00	1.00	including
ZDDH0117	225.00	227.00	2.00	0.46	
ZDDH0117	261.00	285.00	24.00	0.58	
ZDDH0117	268.00	281.00	13.00	0.88	including
ZDDH0117	268.00	270.00	2.00	1.50	including
ZDDH0117	280.00	281.00	1.00	4.12	including
ZDDH0118					No Significant
ZDDH0119	4.60	6.60	2.00	0.52	
ZDDH0119	20.00	26.00	6.00	0.50	
ZDDH0119	20.00	21.00	1.00	1.69	
ZDDH0119	261.00	262.00	1.00	1.18	
ZDDH0119	269.00	270.00	1.00	1.48	
ZDDH0119	326.00	374.00	48.00	0.53	
ZDDH0119	350.00	374.00	24.00	1.02	including
ZDDH0119	355.00	374.00	19.00	1.22	including
ZDDH0119	355.00	359.50	4.50	2.97	including
ZDDH0119	365.00	366.00	1.00	2.64	including
ZDDH0119	373.00	374.00	1.00	4.22	including
ZDDH0120	229.00	232.00	3.00	1.47	
ZDDH0120	317.00	318.00	1.00	15.30	
ZDDH0120	351.00	352.00	1.00	1.16	
ZDDH0120	371.00	378.00	7.00	0.61	
ZDDH0120	376.00	377.00	1.00	1.39	including
ZDDH0120	383.00	384.00	1.00	1.03	
ZDDH0120	387.00	388.00	1.00	1.27	
ZDDH0120	396.00	397.00	1.00	1.02	
ZDDH0120	412.00	415.00	3.00	0.41	
ZDDH0121	35.00	41.00	6.00	0.47	
ZDDH0121	35.00	36.00	1.00	1.07	including
ZDDH0121	60.00	91.50	31.50	0.34	
ZDDH0121	66.00	73.50	7.50	0.59	including
ZDDH0121	66.00	67.00	1.00	1.11	including
ZDDH0121	72.50	73.20	0.70	3.27	including
ZDDH0121	79.00	80.00	1.00	1.40	including
ZDDH0121	86.50	88.00	1.50	2.31	including
ZDDH0121	230.00	231.00	1.00	2.94	including
ZDDH0122	3.00	7.10	4.10	0.38	
ZDDH0122	36.50	37.39	0.89	0.87	
ZDDH0122	43.00	44.00	1.00	0.87	
ZDDH0122	85.00	85.65	0.65	1.11	
ZDDH0122	155.00	156.00	1.00	0.84	
ZDDH0123	70.00	98.00	28.00	0.87	
ZDDH0123	76.00	77.00	1.00	1.93	including
ZDDH0123	84.07	87.00	2.93	5.38	including
ZDDH0123	200.00	204.00	4.00	0.85	
ZDDH0123	203.00	204.00	1.00	1.48	including
ZDDH0123	215.00	221.00	6.00	1.51	
ZDDH0123	242.60	243.20	0.60	1.16	
ZDDH0123	360.00	361.00	1.00	3.55	
ZDDH0123	383.00	384.00	1.00	0.78	
ZDDH0124	23.40	23.90	0.50	2.02	
ZDDH0124	99.00	100.95	1.95	0.88	
ZDDH0124	99.00	100.00	1.00	1.50	including
ZDDH0124	152.00	223.00	71.00	1.63	
ZDDH0124	152.00	191.00	39.00	2.59	including
ZDDH0124	152.00	171.00	19.00	5.07	including

Hole_ID	From (m)	To (m)	Interval	Au (g/t)	Comments	Hole_ID	From (m)	To (m)	Interval	Au (g/t)	Comments
ZDDH0124	152.00	159.00	7.00	11.98	including	ZDDH0131	136.00	140.00	4.00	2.46	including
ZDDH0124	221.00	223.00	2.00	6.43	including	ZDDH0131	176.00	177.00	1.00	38.30	
ZDDH0124	256.00	257.00	1.00	1.17		ZDDH0131	180.00	181.00	1.00	0.84	
ZDDH0125	263.90	264.35	0.45	1.07		ZDDH0131	190.00	191.00	1.00	0.55	
ZDDH0125	316.50	369.00	52.50	1.37		ZDDH0131	197.00	198.00	1.00	0.51	
ZDDH0125	338.00	359.00	21.00	2.72	including	ZDDH0131	228.00	237.00	9.00	0.47	
ZDDH0125	344.00	355.00	11.00	4.14	including	ZDDH0131	234.00	235.00	1.00	1.94	including
ZDDH0125	317.00	318.50	1.50	1.67	including	ZDDH0131	290.00	291.00	1.00	1.02	
ZDDH0125	323.50	324.10	0.60	1.39	including	ZDDH0131	298.00	299.00	1.00	0.72	
ZDDH0125	327.00	329.00	2.00	1.07	including	ZDDH0131	326.00	327.00	1.00	0.94	
ZDDH0125	344.00	347.00	3.00	5.69	including	ZDDH0131	343.00	344.00	1.00	0.89	
ZDDH0125	349.00	355.00	6.00	4.39	including	ZDDH0131	457.00	458.00	1.00	1.00	
ZDDH0126	9.00	38.00	29.00	0.30		ZDDH0132	148.00	149.00	1.00	1.20	
ZDDH0126	19.00	20.10	1.10	1.22	including	ZDDH0133	47.00	48.00	1.00	0.92	
ZDDH0126	35.77	37.00	1.23	3.58	including	ZDDH0133	112.00	117.00	5.00	0.41	
ZDDH0126	93.00	128.00	35.00	0.40		ZDDH0133	115.00	116.00	1.00	1.22	including
ZDDH0126	97.00	103.00	6.00	1.63	including	ZDDH0133	138.00	139.00	1.00	1.21	
ZDDH0126	144.00	145.00	1.00	2.95		ZDDH0133	154.00	155.00	1.00	1.39	
ZDDH0126	251.00	262.00	11.00	0.83		ZDDH0133	229.00	230.00	1.00	4.42	
ZDDH0126	251.00	257.00	6.00	1.38	including	ZDDH0133	249.00	318.00	69.00	0.54	
ZDDH0126	278.90	282.00	3.10	0.51		ZDDH0133	267.00	294.00	27.00	1.18	including
ZDDH0126	300.00	301.00	1.00	2.63		ZDDH0133	267.00	275.00	8.00	3.17	including
ZDDH0126	325.00	388.00	63.00	0.39		ZDDH0133	292.00	293.00	1.00	2.31	including
ZDDH0126	337.00	338.00	1.00	1.02	including	ZDDH0133	333.00	334.00	1.00	1.44	
ZDDH0126	350.00	353.90	3.90	1.09	including	ZDDH0133	339.00	340.00	1.00	0.97	
ZDDH0126	370.00	371.00	1.00	1.13	including	ZDDH0133	355.00	356.00	1.00	1.19	
ZDDH0126	377.63	388.00	10.37	1.04	including	ZDDH0133	404.00	405.00	1.00	1.72	
ZDDH0126	385.00	388.00	3.00	2.76	including	ZDDH0133	438.00	439.00	1.00	0.96	
ZDDH0126	410.00	411.00	1.00	0.95		ZDDH0135	203.00	205.00	2.00	0.52	
ZDDH0126	415.00	416.00	1.00	1.24		ZDDH0135	299.00	300.00	1.00	1.21	
ZDDH0126	463.00	469.00	6.00	0.78		ZDDH0135	334.00	346.00	12.00	3.34	
ZDDH0126	464.00	466.00	2.00	1.24		ZDDH0135	334.00	335.50	1.50	25.22	including
ZDDH0126	468.00	469.00	1.00	1.94		ZDDH0135	345.00	346.00	1.00	1.29	including
ZDDH0127	20.00	49.00	29.00	0.57		ZDDH0136	56.00	57.00	1.00	1.05	
ZDDH0127	23.00	24.00	1.00	2.96	including	ZDDH0136	221.00	222.00	1.00	0.57	
ZDDH0127	45.00	46.50	1.50	3.77	including	ZDDH0136	239.00	346.00	107.00	0.49	
ZDDH0127	97.40	102.00	4.60	0.47		ZDDH0136	252.00	253.00	1.00	1.10	including
ZDDH0127	113.00	123.00	10.00	0.63		ZDDH0136	287.00	324.00	37.00	1.01	including
ZDDH0127	116.20	117.00	0.80	1.55	including	ZDDH0136	309.00	315.00	6.00	1.45	including
ZDDH0127	137.00	138.17	1.17	14.39		ZDDH0136	387.50	388.05	0.55	3.11	
ZDDH0127	205.35	206.20	0.85	2.06		ZDDH0136	415.00	416.00	1.00	2.89	
ZDDH0127	248.00	249.00	1.00	1.18		ZDDH0136	445.00	447.00	2.00	3.53	
ZDDH0127	305.00	307.00	2.00	0.75		ZDDH0137	234.00	235.00	1.00	0.43	
ZDDH0128	78.29	79.20	0.91	7.59		ZDDH0137	237.50	239.00	1.50	0.78	
ZDDH0128	103.00	110.00	7.00	3.22		ZDDH0137	238.18	239.00	0.82	1.09	including
ZDDH0128	106.00	108.90	2.90	6.95	including	ZDDH0137	269.00	272.00	3.00	0.66	
ZDDH0128	249.00	250.00	1.00	3.04		ZDDH0137	270.00	271.00	1.00	1.45	including
ZDDH0128	289.00	290.00	1.00	1.08		ZDDH0137	337.00	342.00	5.00	0.87	
ZDDH0128	316.00	317.00	1.00	1.77		ZDDH0137	338.00	341.00	3.00	1.07	including
ZDDH0128	368.00	371.00	3.00	3.87		ZDDH0138	193.00	194.00	1.00	0.46	
ZDDH0129	272.00	276.20	4.20	0.41		ZDDH0138	285.30	292.00	6.70	0.33	
ZDDH0129	324.00	350.00	26.00	0.49		ZDDH0138	285.30	286.00	0.70	1.47	including
ZDDH0129	324.00	325.00	1.00	1.57	including	ZDDH0139	14.00	15.00	1.00	3.80	
ZDDH0129	330.00	331.00	1.00	0.91	including	ZDDH0139	23.30	26.00	2.70	1.06	
ZDDH0129	331.50	332.00	0.50	2.21	including	ZDDH0139	25.00	26.00	1.00	2.40	including
ZDDH0129	341.00	342.00	1.00	1.53	including	ZDDH0139	58.00	105.50	47.50	0.53	
ZDDH0129	347.00	348.00	1.00	5.13	including	ZDDH0139	63.00	66.00	3.00	2.54	including
ZDDH0130	20.00	29.00	9.00	0.57		ZDDH0139	92.00	105.50	13.50	0.99	including
ZDDH0130	20.00	21.00	1.00	1.91		ZDDH0139	92.00	98.00	6.00	1.31	including
ZDDH0130	28.00	29.00	1.00	2.04		ZDDH0139	145.00	154.90	9.90	0.51	
ZDDH0130	230.00	231.00	1.00	3.24		ZDDH0139	145.10	147.00	1.90	1.45	including
ZDDH0131	93.00	95.00	2.00	0.60		ZDDH0139	166.52	167.00	0.48	1.55	
ZDDH0131	119.00	144.00	25.00	2.11		ZDDH0139	286.00	297.00	11.00	0.62	
ZDDH0131	120.00	120.59	0.59	63.10	including	ZDDH0139	291.10	293.00	1.90	1.86	including

Hole_ID	From (m)	To (m)	Interval	Au (g/t)	Comments
ZDDH0140	72.50	85.36	12.86	0.65	
ZDDH0140	77.60	81.76	4.16	1.34	including
ZDDH0140	105.05	106.65	1.60	1.19	
ZDDH0140	162.45	163.38	0.93	1.01	
ZDDH0140	190.00	196.00	6.00	0.94	
ZDDH0140	195.00	196.00	1.00	3.04	including
ZDDH0140	239.00	241.00	2.00	2.22	
ZDDH0140	361.00	367.00	6.00	1.19	
ZDDH0140	361.00	362.00	1.00	5.15	including
ZDDH0141	102.00	154.60	52.60	0.45	
ZDDH0141	116.00	118.60	2.60	1.18	including
ZDDH0141	131.88	132.50	0.62	5.19	including
ZDDH0141	144.83	147.24	2.41	5.88	including
ZDDH0141	263.00	263.54	0.54	6.48	
ZDDH0141	399.00	399.50	0.50	1.40	
ZDDH0141	447.50	448.00	0.50	1.25	
ZDDH0142	145.50	149.00	3.50	0.51	
ZDDH0142	148.00	149.00	1.00	1.43	including
ZDDH0142	163.00	164.00	1.00	1.20	
ZDDH0142	170.00	171.00	1.00	0.86	
ZDDH0142	176.00	181.00	5.00	1.15	
ZDDH0142	176.00	178.00	2.00	2.24	including
ZDDH0142	227.00	237.83	10.83	0.51	
ZDDH0142	237.00	237.83	0.83	1.25	including
ZDDH0142	247.00	248.00	1.00	2.63	
ZDDH0142	258.00	259.05	1.05	0.53	
ZDDH0142	283.00	287.00	4.00	0.96	
ZDDH0142	283.00	284.00	1.00	1.56	including
ZDDH0142	286.00	287.00	1.00	2.22	including
ZDDH0143	65.00	81.92	16.92	0.60	
ZDDH0143	72.00	81.00	9.00	0.91	including
ZDDH0143	72.00	75.00	3.00	1.43	including
ZDDH0143	205.26	212.00	6.74	1.69	
ZDDH0143	210.00	211.00	1.00	8.93	including
ZDDH0143	284.00	290.00	6.00	0.85	
ZDDH0143	285.00	286.00	1.00	4.27	including
ZDDH0143	310.00	312.00	2.00	0.48	
ZDDH0144	14.00	16.18	2.18	1.30	
ZDDH0144	40.00	42.00	2.00	2.30	
ZDDH0144	55.00	68.00	13.00	0.37	
ZDDH0144	65.35	67.00	1.65	1.33	including
ZDDH0144	82.50	104.00	21.50	0.41	
ZDDH0144	98.00	101.00	3.00	1.30	including
ZDDH0144	106.00	107.00	1.00	1.11	including
ZDDH0144	153.00	158.00	5.00	0.98	
ZDDH0144	154.00	155.00	1.00	0.46	including
ZDDH0144	157.00	158.00	1.00	1.90	including
ZDDH0144	222.00	223.00	1.00	1.76	
ZDDH0144	291.00	304.00	13.00	0.75	
ZDDH0144	291.00	292.00	1.00	1.22	including
ZDDH0144	299.00	303.00	4.00	1.95	including
ZDDH0145	102.00	154.60	52.60	0.45	
ZDDH0145	116.00	118.60	2.60	1.18	including
ZDDH0145	131.88	132.50	0.62	5.19	including
ZDDH0145	144.83	147.24	2.41	5.88	including
ZDDH0145	263.00	263.54	0.54	6.48	
ZDDH0145	399.00	399.50	0.50	1.40	
ZDDH0145	447.50	448.00	0.50	1.25	
ZDDH0146	11.80	20.00	8.20	1.63	
ZDDH0146	11.80	14.00	2.20	5.50	including
ZDDH0146	86.60	87.60	1.00	1.00	
ZDDH0146	89.00	92.10	3.10	1.44	including
ZDDH0146	204.26	217.00	12.74	0.58	
ZDDH0146	211.00	217.00	6.00	0.83	including

Hole_ID	From (m)	To (m)	Interval	Au (g/t)	Comments
ZDDH0146	216.00	217.00	1.00	2.02	including
ZDDH0146	338.00	339.00	1.00	0.88	
ZDDH0146	388.00	390.00	2.00	0.58	
ZDDH0147	4.00	32.30	28.30	0.48	
ZDDH0147	22.00	32.30	10.30	1.02	including
ZDDH0147	29.00	32.30	3.30	2.29	including
ZDDH0147	71.90	73.00	1.10	3.05	
ZDDH0147	85.00	85.80	0.80	0.99	
ZDDH0147	111.00	112.00	1.00	1.56	
ZDDH0147	161.00	162.00	1.00	1.05	
ZDDH0147	244.00	256.00	12.00	0.48	
ZDDH0147	255.00	256.00	1.00	2.05	including
ZDDH0148	33.00	34.00	1.00	1.03	
ZDDH0148	50.00	51.00	1.00	0.77	
ZDDH0148	69.00	78.00	9.00	0.62	
ZDDH0148	71.00	74.00	3.00	1.17	including
ZDDH0148	99.00	102.00	3.00	0.46	
ZDDH0148	124.15	124.76	0.61	0.83	
ZDDH0148	167.00	170.00	3.00	1.30	
ZDDH0148	179.00	183.00	4.00	0.45	
ZDDH0148	189.00	193.00	4.00	0.65	
ZDDH0148	189.00	190.00	1.00	1.17	including
ZDDH0148	211.50	218.00	6.50	0.53	
ZDDH0148	211.50	212.48	0.98	1.32	including
ZDDH0148	215.90	216.75	0.85	1.08	including
ZDDH0148	259.70	267.00	7.30	1.56	including
ZDDH0148	259.70	263.00	3.30	3.24	including
ZDDH0148	289.00	289.55	0.55	2.59	
ZDDH0149	97.50	118.78	21.28	0.34	
ZDDH0149	105.00	109.50	4.50	1.14	
ZDDH0149	108.00	109.50	1.50	2.16	
ZDDH0149	243.00	279.00	36.00	0.40	
ZDDH0149	248.00	259.00	11.00	0.81	
ZDDH0149	249.00	253.00	4.00	1.69	
ZDDH0149	249.00	251.00	2.00	2.38	
ZDDH0149	272.95	275.50	2.55	0.96	
ZDDH0149	272.95	274.00	1.05	1.77	
ZDDH0150	2.00	3.00	1.00	0.57	
ZDDH0150	20.00	34.00	14.00	0.66	
ZDDH0150	33.00	34.00	1.00	7.38	including
ZDDH0150	60.00	73.00	13.00	0.73	
ZDDH0150	64.00	66.00	2.00	2.44	including
ZDDH0150	72.00	73.00	1.00	3.28	including
ZDDH0150	170.00	171.00	1.00	2.60	
ZDDH0150	249.00	292.50	43.50	0.86	
ZDDH0150	249.00	250.00	1.00	2.02	including
ZDDH0150	265.00	276.00	11.00	1.33	including
ZDDH0150	259.00	260.00	1.00	2.47	including
ZDDH0150	269.00	270.00	1.00	2.91	including
ZDDH0150	289.00	292.50	3.50	3.11	including
ZDDH0151	1.50	6.00	4.50	1.29	Hole abandoned
ZDDH0152	5.00	16.00	11.00	0.93	
ZDDH0152	9.91	16.00	6.09	1.52	including
ZDDH0152	9.91	11.65	1.74	2.77	including
ZDDH0152	47.30	47.90	0.60	0.60	
ZDDH0152	104.60	105.10	0.50	2.31	
ZDDH0152	141.35	170.00	28.65	0.34	
ZDDH0152	149.00	150.00	1.00	4.39	including
ZDDH0152	155.00	167.40	12.40	0.64	including
ZDDH0153	14.20	66.00	51.80	0.24	
ZDDH0153	14.20	44.20	30.00	0.31	including
ZDDH0153	14.20	15.00	0.80	0.81	including
ZDDH0153	26.00	29.00	3.00	0.77	including
ZDDH0153	28.00	29.00	1.00	1.05	including

Hole_ID	From (m)	To (m)	Interval	Au (g/t)	Comments	Hole_ID	From (m)	To (m)	Interval	Au (g/t)	Comments
ZDDH0153	49.00	50.00	1.00	1.01	including	ZDDH0164	23.00	24.50	1.50	0.62	
ZDDH0153	64.00	66.00	2.00	0.97	including	ZDDH0164	28.00	29.00	1.00	0.56	
ZDDH0154	3.45	43.00	39.55	1.31		ZDDH0164	97.00	119.88	22.88	0.51	
ZDDH0154	8.00	13.00	5.00	5.66	including	ZDDH0164	97.00	107.00	10.00	0.95	including
ZDDH0154	82.00	83.00	1.00	7.02		ZDDH0164	98.00	100.00	2.00	3.79	including
ZDDH0154	109.00	176.00	67.00	3.44		ZDDH0164	119.00	119.88	0.88	1.37	including
ZDDH0154	117.50	131.00	13.50	15.84	including	ZDDH0164	179.00	277.00	98.00	0.75	
ZDDH0154	168.00	176.00	8.00	1.22	including	ZDDH0164	179.00	232.00	53.00	1.05	including
ZDDH0155	56.00	57.00	1.00	2.01		ZDDH0164	179.00	199.00	20.00	2.15	including
ZDDH0155	113.00	127.00	14.00	1.13		ZDDH0164	179.00	183.00	4.00	7.79	including
ZDDH0155	121.00	122.00	1.00	11.90	including	ZDDH0164	271.00	275.00	4.00	2.24	including
ZDDH0155	142.00	143.00	1.00	1.22		ZDDH0164	346.00	347.00	1.00	5.44	
ZDDH0156	100.00	140.00	40.00	0.38		ZDDH0165	5.00	30.00	25.00	0.96	
ZDDH0156	100.00	101.00	1.00	1.19	including	ZDDH0165	6.00	11.00	5.00	2.24	including
ZDDH0156	111.00	112.00	1.00	2.38	including	ZDDH0165	25.50	28.80	3.30	2.96	including
ZDDH0156	118.00	123.00	5.00	1.23	including	ZDDH0165	64.20	73.00	8.80	0.82	
ZDDH0156	128.45	131.00	2.55	0.77	including	ZDDH0165	69.00	71.00	2.00	2.08	including
ZDDH0156	139.00	140.00	1.00	1.88	including	ZDDH0165	85.00	86.00	1.00	1.06	
ZDDH0157	21.00	22.00	1.00	0.43		ZDDH0165	187.00	188.00	1.00	0.87	
ZDDH0157	107.34	109.00	1.66	1.08		ZDDH0165	241.00	242.00	1.00	1.53	
ZDDH0158	37.00	56.00	19.00	0.58		ZDDH0165	268.00	270.00	2.00	2.89	
ZDDH0158	38.00	40.00	2.00	4.53	including	ZDDH0165	301.00	302.00	1.00	0.90	
ZDDH0159	33.00	34.00	1.00	0.84		ZDDH0165	317.00	317.56	0.56	2.46	
ZDDH0159	80.60	82.10	1.50	1.86		ZDDH0166	55.00	56.00	1.00	1.35	
ZDDH0159	181.00	181.65	0.65	2.78		ZDDH0166	297.00	334.00	37.00	0.49	
ZDDH0159	237.00	238.00	1.00	0.76		ZDDH0166	297.00	308.00	11.00	0.92	including
ZDDH0160	36.00	58.00	22.00	0.50		ZDDH0166	298.50	306.00	7.50	1.15	including
ZDDH0160	36.90	39.00	2.10	1.75	including	ZDDH0166	305.00	306.00	1.00	3.68	including
ZDDH0160	80.00	81.30	1.30	1.04		ZDDH0166	329.00	332.50	3.50	1.54	including
ZDDH0160	178.00	179.00	1.00	1.14		ZDDH0167	69.00	70.00	1.00	1.10	
ZDDH0160	233.00	237.12	4.12	0.79		ZDDH0167	103.00	140.00	37.00	0.43	
ZDDH0160	233.00	234.00	1.00	2.20	including	ZDDH0167	112.40	119.00	6.60	0.80	including
ZDDH0160	236.50	237.12	0.62	1.29	including	ZDDH0167	131.00	135.00	4.00	1.15	including
ZDDH0160	304.00	310.80	6.80	0.86		ZDDH0168	2.00	42.00	40.00	2.11	
ZDDH0160	306.00	308.00	2.00	2.08	including	ZDDH0168	2.00	19.50	17.50	4.51	including
ZDDH0161	74.00	201.00	127.00	0.67		ZDDH0168	5.00	7.00	2.00	1.87	including
ZDDH0161	74.00	75.00	1.00	3.19	including	ZDDH0168	12.00	19.50	7.50	9.19	including
ZDDH0161	85.00	90.96	5.96	1.42	including	ZDDH0168	39.00	40.00	1.00	1.87	including
ZDDH0161	112.00	143.00	31.00	1.64	including	ZDDH0168	106.00	110.70	4.70	0.53	
ZDDH0161	115.00	137.00	22.00	2.16	including	ZDDH0168	109.00	110.05	1.05	1.16	including
ZDDH0161	115.00	116.95	1.95	7.49	including	ZDDH0168	219.00	220.00	1.00	0.74	
ZDDH0161	132.00	143.00	11.00	2.97	including	ZDDH0169	53.00	125.00	72.00	0.52	
ZDDH0161	132.00	138.00	6.00	4.94	including	ZDDH0169	53.00	54.90	1.90	1.50	including
ZDDH0161	150.45	150.80	0.35	3.35	including	ZDDH0169	73.00	75.00	2.00	1.17	including
ZDDH0161	160.00	161.00	1.00	2.31	including	ZDDH0169	107.30	123.00	15.70	1.87	including
ZDDH0161	176.00	177.00	1.00	1.47	including	ZDDH0169	107.30	116.58	9.28	3.00	including
ZDDH0161	195.00	200.00	5.00	2.44	including	ZDDH0169	201.00	202.00	1.00	1.02	
ZDDH0161	247.00	248.00	1.00	1.01		ZDDH0169	237.00	261.00	24.00	0.66	
ZDDH0161	294.00	300.28	6.28	0.61		ZDDH0169	238.00	253.00	15.00	0.98	including
ZDDH0161	294.00	296.00	2.00	1.26	including	ZDDH0169	238.00	242.00	4.00	1.63	including
ZDDH0161	311.00	312.00	1.00	1.14		ZDDH0169	248.00	252.00	4.00	1.07	including
ZDDH0162	63.00	74.00	11.00	0.57		ZDDH0169	284.34	288.00	3.66	0.88	
ZDDH0162	63.00	65.00	2.00	1.18	including	ZDDH0170	9.00	214.00	205.00	0.96	
ZDDH0162	73.00	74.00	1.00	1.68	including	ZDDH0170	9.00	17.00	8.00	1.30	including
ZDDH0162	102.00	109.00	7.00	0.51		ZDDH0170	21.00	22.00	1.00	1.05	including
ZDDH0162	108.00	109.00	1.00	2.49	including	ZDDH0170	23.00	25.00	2.00	1.13	including
ZDDH0162	144.50	157.00	12.50	2.71		ZDDH0170	27.00	29.10	2.10	1.33	including
ZDDH0162	144.50	148.00	3.50	6.45	including	ZDDH0170	47.00	51.00	4.00	1.14	including
ZDDH0162	188.42	215.95	27.53	0.66		ZDDH0170	80.00	88.00	8.00	1.33	including
ZDDH0162	194.00	198.00	4.00	1.29	including	ZDDH0170	116.00	117.00	1.00	2.88	including
ZDDH0162	203.00	204.00	1.00	1.29	including	ZDDH0170	147.00	206.00	59.00	2.49	including
ZDDH0162	208.00	209.00	1.00	1.56	including	ZDDH0170	147.00	182.00	35.00	3.99	including
ZDDH0162	212.50	215.95	3.45	1.45	including	ZDDH0170	147.00	168.00	21.00	5.26	including
ZDDH0163	73.20	74.95	1.75	1.98		ZDDH0170	147.00	159.00	12.00	8.55	including
ZDDH0163	98.35	120.00	21.65	0.90		ZDDH0170	191.00	192.00	1.00	2.84	including
ZDDH0163	100.52	116.74	16.22	1.12	including	ZDDH0170	197.00	198.00	1.00	1.27	including
ZDDH0163	100.52	111.26	10.74	1.23	including	ZDDH0170	205.00	206.00	1.00	2.11	including
ZDDH0163	138.26	139.00	0.74	1.01							
ZDDH0163	182.50	184.00	1.50	0.84							

Hole_ID	From (m)	To (m)	Interval	Au (g/t)	Comments
ZDDH0171	59.00	105.00	46.00	0.36	
ZDDH0171	63.00	77.50	14.50	0.72	<i>including</i>
ZDDH0171	64.00	65.00	1.00	5.34	
ZDDH0171	73.00	74.00	1.00	1.48	
ZDDH0171	83.07	84.00	0.93	1.21	
ZDDH0171	247.00	248.00	1.00	5.70	
ZDDH0172	70.00	74.00	4.00	1.45	
ZDDH0172	73.00	74.00	1.00	3.48	<i>including</i>
ZDDH0172	116.00	127.50	11.50	0.49	
ZDDH0172	116.00	118.00	2.00	1.26	<i>including</i>
ZDDH0172	126.00	127.50	1.50	1.33	<i>including</i>
ZDDH0172	203.00	204.00	1.00	0.62	
ZDDH0172	244.00	245.00	1.00	0.87	
ZDDH0173	46.00	48.80	2.80	1.01	
ZDDH0173	110.00	111.00	1.00	0.70	
ZDDH0173	114.00	115.00	1.00	0.72	
ZDDH0173	132.00	133.00	1.00	2.09	
ZDDH0173	166.00	171.00	5.00	1.40	
ZDDH0173	169.00	171.00	2.00	2.64	<i>including</i>
ZDDH0173	219.85	296.00	76.15	1.16	
ZDDH0173	233.40	273.00	39.60	1.67	<i>including</i>
ZDDH0173	233.70	245.00	11.30	2.60	<i>including</i>
ZDDH0173	265.00	273.00	8.00	3.56	<i>including</i>
ZDDH0173	289.00	293.00	4.00	1.95	<i>including</i>
ZDDH0173	333.00	334.00	1.00	1.20	
ZDDH0174	40.00	49.00	9.00	1.19	
ZDDH0174	40.00	43.76	3.76	1.98	<i>including</i>
ZDDH0174	48.00	49.00	1.00	2.85	<i>including</i>
ZDDH0174	75.00	76.40	1.40	24.92	
ZDDH0174	93.00	94.00	1.00	1.04	
ZDDH0174	147.00	148.00	1.00	2.99	
ZDDH0174	242.50	244.00	1.50	1.37	
ZDDH0174	294.00	308.00	14.00	0.55	
ZDDH0174	294.00	301.00	7.00	0.72	<i>including</i>
ZDDH0174	321.00	322.00	1.00	1.04	
ZDDH0174	334.00	346.00	12.00	0.31	
ZDDH0175	71.90	90.00	18.10	1.52	
ZDDH0175	75.00	78.00	3.00	3.27	<i>including</i>
ZDDH0175	84.00	85.00	1.00	15.40	<i>including</i>
ZDDH0175	149.00	174.00	25.00	0.39	
ZDDH0175	150.00	153.50	3.50	0.75	<i>including</i>
ZDDH0175	162.00	173.00	11.00	0.58	<i>including</i>
ZDDH0175	172.00	173.00	1.00	3.64	<i>including</i>
ZDDH0176	3.52	9.00	5.48	0.34	
ZDDH0176	27.00	46.00	19.00	2.58	
ZDDH0176	27.00	31.00	4.00	10.63	<i>including</i>
ZDDH0176	111.50	149.70	38.20	0.35	
ZDDH0176	132.00	137.00	5.00	1.62	<i>including</i>
ZDDH0177	104.00	234.00	130.00	0.65	
ZDDH0177	110.00	112.00	2.00	5.69	
ZDDH0177	138.60	146.00	7.40	7.68	
ZDDH0177	164.70	167.50	2.80	1.04	
ZDDH0177	206.00	208.00	2.00	1.90	
ZDDH0177	215.03	217.03	2.00	1.17	
ZDDH0177	230.00	231.00	1.00	2.50	
ZDDH0178	342.00	343.87	1.87	1.24	
ZDDH0178	377.00	378.87	1.87	1.00	
ZDDH0178	383.73	384.60	0.87	0.93	
ZDDH0178	387.00	388.00	1.00	1.12	
ZDDH0178	485.00	494.00	9.00	0.88	
ZDDH0178	486.35	487.70	1.35	3.88	<i>including</i>
ZDDH0178	533.00	553.00	20.00	0.39	
ZDDH0178	542.00	553.00	11.00	0.45	<i>including</i>
ZDDH0178	552.00	553.00	1.00	1.69	<i>including</i>
ZDDH0178	564.00	565.00	1.00	1.53	
ZDDH0179	150.00	156.00	6.00	0.52	
ZDDH0179	338.00	385.00	47.00	0.85	
ZDDH0179	338.00	348.50	10.50	2.49	<i>including</i>
ZDDH0179	347.00	351.00	4.00	5.22	<i>including</i>
ZDDH0179	382.50	385.00	2.50	1.18	<i>including</i>

Hole_ID	From (m)	To (m)	Interval	Au (g/t)	Comments
ZDDH0180	20.00	245.35	225.35	0.64	
ZDDH0180	20.00	116.15	96.15	0.98	<i>including</i>
ZDDH0180	20.00	62.50	42.50	1.65	<i>including</i>
ZDDH0180	20.00	25.00	5.00	2.01	<i>including</i>
ZDDH0180	50.50	62.50	12.00	4.78	<i>including</i>
ZDDH0180	50.50	54.00	3.50	10.83	<i>including</i>
ZDDH0180	71.00	73.00	2.00	1.03	<i>including</i>
ZDDH0180	82.00	83.00	1.00	6.31	<i>including</i>
ZDDH0180	102.00	104.00	2.00	1.07	<i>including</i>
ZDDH0180	108.00	109.00	1.00	1.33	<i>including</i>
ZDDH0180	115.20	116.15	0.95	2.65	<i>including</i>
ZDDH0180	135.00	136.00	1.00	1.42	<i>including</i>
ZDDH0180	159.70	195.00	35.30	1.03	<i>including</i>
ZDDH0180	159.70	177.87	18.17	1.41	<i>including</i>
ZDDH0180	159.70	165.00	5.30	1.94	<i>including</i>
ZDDH0180	176.00	177.87	1.87	5.30	<i>including</i>
ZDDH0180	185.00	187.50	2.50	2.79	<i>including</i>
ZDDH0180	231.00	232.00	1.00	1.08	<i>including</i>
ZDDH0180	244.00	245.35	1.35	1.41	<i>including</i>
ZDDH0180	269.00	270.00	1.00	1.01	
ZDDH0181A	95.00	96.00	1.00	2.29	
ZDDH0181A	105.00	119.00	14.00	2.07	
ZDDH0181A	107.90	116.90	9.00	2.81	<i>including</i>
ZDDH0181A	174.00	174.89	0.89	1.49	
ZDDH0181A	204.60	221.00	16.40	2.35	
ZDDH0181A	216.00	218.00	2.00	12.74	<i>including</i>
ZDDH0181A	249.00	250.00	1.00	1.02	
ZDDH0181A	264.00	270.00	6.00	2.03	
ZDDH0181A	264.00	268.00	4.00	2.79	<i>including</i>
ZDDH0181A	303.00	309.00	6.00	1.82	
ZDDH0182	69.00	70.00	1.00	2.38	
ZDDH0182	102.00	103.00	1.00	0.86	
ZDDH0182	204.00	240.00	36.00	0.38	
ZDDH0182	204.00	222.47	18.47	0.64	<i>including</i>
ZDDH0182	204.53	209.50	4.97	0.94	<i>including</i>
ZDDH0182	218.00	223.00	5.00	1.25	<i>including</i>
ZDDH0182	310.70	349.90	39.20	0.91	
ZDDH0182	310.70	322.10	11.40	2.80	<i>including</i>
ZDDH0182	426.00	428.00	2.00	0.61	
ZDDH0183	9.60	25.00	15.40	0.97	
ZDDH0183	9.60	15.00	5.40	2.57	<i>including</i>
ZDDH0183	47.00	55.00	8.00	0.31	
ZDDH0183	70.00	71.00	1.00	0.73	
ZDDH0183	106.00	119.00	13.00	2.42	
ZDDH0183	108.60	117.00	8.40	3.46	<i>including</i>
ZDDH0183	109.15	114.00	4.85	5.07	<i>including</i>
ZDDH0183	201.00	202.00	1.00	1.35	
ZDDH0183	228.50	229.00	0.50	1.11	
ZDDH0184	4.00	9.40	5.40	1.69	
ZDDH0184	5.50	8.00	2.50	3.22	<i>including</i>
ZDDH0184	28.40	29.00	0.60	0.98	
ZDDH0184	116.00	117.00	1.00	1.48	
ZDDH0184	132.00	133.00	1.00	0.83	
ZDDH0184	207.00	208.00	1.00	5.54	
ZDDH0185	24.00	25.00	1.00	1.67	
ZDDH0185	80.00	82.00	2.00	1.45	
ZDDH0186	17.50	19.00	1.50	0.50	<i>abandoned</i>
ZDDH0186	47.00	58.70	11.70	0.43	
ZDDH0186	47.00	50.60	3.60	0.83	
ZDDH0186	57.00	58.70	1.70	1.11	
ZDDH0186A	8.00	9.15	1.15	0.81	
ZDDH0186A	11.25	12.00	0.75	0.51	
ZDDH0186A	57.00	59.00	2.00	0.41	
ZDDH0186A	86.00	87.00	1.00	0.81	
ZDDH0186A	192.00	195.00	3.00	0.46	
ZDDH0186A	210.00	216.00	6.00	0.34	
ZDDH0186A	214.00	215.00	1.00	0.61	<i>including</i>
ZDDH0186A	235.00	236.00	1.00	0.93	

Hole_ID	From (m)	To (m)	Interval	Au (g/t)	Comments	Hole_ID	From (m)	To (m)	Interval	Au (g/t)	Comments
ZDDH0187	12.70	13.80	1.10	0.52		ZDDH0196	82.00	83.00	1.00	0.54	
ZDDH0187	52.00	62.90	10.90	0.51		ZDDH0196	100.00	101.00	1.00	0.77	
ZDDH0187	56.00	58.00	2.00	1.84		ZDDH0196	122.00	129.00	7.00	1.03	
ZDDH0187	70.00	71.00	1.00	0.56		ZDDH0196	140.00	142.70	2.70	3.62	
ZDDH0187	104.00	117.00	13.00	0.41		ZDDH0197	138.50	157.00	18.50	4.55	
ZDDH0187	108.00	111.00	3.00	1.41		ZDDH0197	138.50	147.80	9.30	8.79	including
ZDDH0188	152.80	153.60	0.80	0.65		ZDDH0197	191.00	192.00	1.00	3.39	
ZDDH0189	0.40	181.00	180.60	0.35		ZDDH0197	248.00	248.73	0.73	3.71	
ZDDH0189	0.40	12.00	11.60	1.31		ZDDH0197	263.88	265.00	1.12	1.08	
ZDDH0189	2.50	9.00	6.50	2.11		ZDDH0198	63.00	64.00	1.00	1.47	
ZDDH0189	33.00	34.00	1.00	0.92		ZDDH0198	99.00	100.00	1.00	0.71	
ZDDH0189	42.00	63.50	21.50	0.81		ZDDH0198	109.53	110.86	1.33	0.59	
ZDDH0189	45.00	48.00	3.00	1.02	including	ZDDH0198	172.80	175.70	2.90	0.66	
ZDDH0189	50.00	51.00	1.00	2.09	including	ZDDH0198	264.00	380.00	116.00	0.95	To EOH
ZDDH0189	58.50	64.50	6.00	1.17		ZDDH0198	269.00	304.00	35.00	1.73	including
ZDDH0189	58.50	60.00	1.50	2.87		ZDDH0198	270.00	287.00	17.00	2.92	including
ZDDH0189	116.00	117.00	1.00	0.99		ZDDH0198	270.00	274.00	4.00	5.46	including
ZDDH0189	152.00	181.00	29.00	0.62		ZDDH0198	285.00	287.00	2.00	12.14	including
ZDDH0189	152.00	153.50	1.50	2.14	including	ZDDH0198	340.00	363.00	23.00	1.77	including
ZDDH0189	159.50	162.85	3.35	2.58	including	ZDDH0198	340.00	346.00	6.00	2.84	including
ZDDH0189	178.00	181.00	3.00	1.36	including	ZDDH0198	356.00	359.00	3.00	7.16	including
ZDDH0190	27.00	29.00	2.00	0.97		ZDDH0199	0.57	10.70	10.13	0.57	
ZDDH0190	337.00	337.50	0.50	2.18		ZDDH0199	8.62	10.00	1.38	1.39	including
ZDDH0191	353.00	405.00	52.00	1.61		ZDDH0199	24.00	34.60	10.60	0.40	
ZDDH0191	353.00	383.00	30.00	2.57	including	ZDDH0199	33.00	34.60	1.60	1.43	including
ZDDH0191	367.20	370.00	2.80	11.61	including	ZDDH0199	58.15	58.85	0.70	1.05	
ZDDH0191	375.85	383.00	7.15	4.85	including	ZDDH0199	128.00	129.00	1.00	0.66	
ZDDH0191	462.00	463.00	1.00	2.25		ZDDH0199	211.00	212.00	1.00	1.46	
ZDDH0191	474.00	475.00	1.00	1.45		ZDDH0200	39.00	40.00	1.00	0.62	
ZDDH0192	61.00	65.00	4.00	1.51		ZDDH0200	48.00	49.36	1.36	0.49	
ZDDH0192	123.00	124.00	1.00	1.14		ZDDH0200	96.00	96.47	0.47	0.71	
ZDDH0192	142.00	146.00	4.00	0.83		ZDDH0200	165.00	166.00	1.00	0.55	
ZDDH0192	241.50	243.00	1.50	0.78		ZDDH0200	182.00	184.00	2.00	0.64	
ZDDH0192	255.00	257.50	2.50	1.39		ZDDH0201	32.62	33.05	0.43	1.50	
ZDDH0192	305.42	391.00	85.58	0.82		ZDDH0201	73.00	73.96	0.96	4.68	
ZDDH0192	339.00	352.00	13.00	2.20	including	ZDDH0201	83.00	84.00	1.00	2.56	
ZDDH0192	339.00	344.00	5.00	4.19	including	ZDDH0201	125.50	152.70	27.20	0.40	
ZDDH0192	365.80	392.00	26.20	1.17	including	ZDDH0201	129.00	130.00	1.00	0.99	including
ZDDH0192	366.83	385.00	18.17	1.50	including	ZDDH0201	135.70	136.45	0.75	1.54	including
ZDDH0193	2.20	19.00	16.80	0.74		ZDDH0201	149.00	152.70	3.70	1.61	including
ZDDH0193	7.00	14.00	7.00	1.32	including	ZDDH0201	189.83	190.30	0.47	2.18	
ZDDH0193	37.50	38.45	0.95	1.13		ZDDH0201	267.90	283.60	15.70	0.55	
ZDDH0193	50.00	51.00	1.00	0.99		ZDDH0201	267.90	268.30	0.40	5.00	including
ZDDH0193	117.59	118.00	0.41	3.20		ZDDH0201	278.27	283.00	4.73	1.03	
ZDDH0193	156.00	157.00	1.00	15.95		ZDDH0201	330.16	332.00	1.84	3.76	
ZDDH0193	247.00	252.00	5.00	0.76		ZDDH0202	5.00	6.00	1.00	0.52	
ZDDH0193	247.00	247.90	0.90	3.34	including	ZDDH0202	228.00	256.00	28.00	1.13	
ZDDH0194	53.00	54.00	1.00	1.30		ZDDH0202	228.00	244.00	16.00	1.78	including
ZDDH0194	80.00	82.00	2.00	7.74		ZDDH0202	274.00	275.00	1.00	2.73	
ZDDH0194	101.00	103.00	2.00	2.25		ZDDH0202	279.00	279.50	0.50	1.40	
ZDDH0194	112.00	113.00	1.00	0.91		ZDDH0202	336.00	338.17	2.17	0.85	
ZDDH0194	149.00	154.00	5.00	1.28		ZDDH0202	383.00	384.00	1.00	1.03	
ZDDH0194	177.60	178.26	0.66	1.14		ZDDH0202	400.00	403.00	3.00	0.55	
ZDDH0194	238.00	241.00	3.00	0.62		ZDDH0202	498.50	499.98	1.48	0.65	
ZDDH0194	262.00	263.00	1.00	1.29		ZDDH0202	511.44	512.00	0.56	1.60	
ZDDH0194	310.00	311.00	1.00	3.17		ZDDH0202	531.00	532.00	1.00	1.57	
ZDDH0194	359.00	361.00	2.00	0.63		ZDDH0203	67.00	68.00	1.00	0.85	
ZDDH0194	366.00	367.00	1.00	2.71		ZDDH0203	175.80	189.70	13.90	0.78	
ZDDH0195	84.12	92.32	8.20	0.54		ZDDH0203	175.80	181.90	6.10	1.13	including
ZDDH0195	84.12	84.70	0.58	2.47	including	ZDDH0203	188.00	189.70	1.70	2.10	including
ZDDH0195	217.00	220.00	3.00	1.34		ZDDH0203	215.00	215.92	0.92	2.52	
ZDDH0195	267.50	325.00	57.50	0.82		ZDDH0203	314.00	315.00	1.00	3.14	
ZDDH0195	267.50	269.00	1.50	2.33	including	ZDDH0203	367.00	392.00	25.00	4.22	
ZDDH0195	287.90	299.00	11.10	1.40	including	ZDDH0203	373.00	387.00	14.00	6.81	including
ZDDH0195	287.90	290.00	2.10	4.05	including	ZDDH0203	383.00	384.40	1.40	55.56	including
ZDDH0195	313.00	325.00	12.00	2.21	including	ZDDH0204	225.00	225.48	0.48	3.00	
ZDDH0195	313.00	321.00	8.00	2.60	including	ZDDH0204	395.00	498.00	103.00	0.48	

Hole_ID	From (m)	To (m)	Interval	Au (g/t)	Comments	Hole_ID	From (m)	To (m)	Interval	Au (g/t)	Comments
ZDDH0204	395.00	404.00	9.00	1.59	including	ZDDH0212					NSI
ZDDH0204	419.00	420.00	1.00	1.14	including	ZDDH0213	196.00	197.00	1.00	0.82	
ZDDH0204	429.00	430.00	1.00	1.60	including	ZDDH0213	215.00	216.18	1.18	2.15	
ZDDH0204	430.12	431.00	0.88	1.25	including	ZDDH0213	239.30	241.00	1.70	0.56	
ZDDH0204	465.00	498.00	33.00	0.76	including	ZDDH0213	387.00	397.00	10.00	0.62	
ZDDH0204	465.00	478.00	13.00	1.40	including	ZDDH0213	387.00	391.00	4.00	1.10	including
ZDDH0204	487.56	489.36	1.80	1.18	including	ZDDH0213	412.00	417.08	5.08	0.62	
ZDDH0204	497.00	498.00	1.00	3.36	including	ZDDH0213	437.00	439.00	2.00	4.22	
ZDDH0205	23.00	24.00	1.00	7.16		ZDDH0214	109.27	138.00	28.73	0.54	
ZDDH0205	113.00	206.00	93.00	0.31		ZDDH0214	111.30	113.50	2.20	2.97	including
ZDDH0205	114.00	118.00	4.00	0.57	including	ZDDH0214	137.23	138.00	0.77	7.17	including
ZDDH0205	140.00	144.00	4.00	0.70	including	ZDDH0214	159.00	160.00	1.00	1.50	
ZDDH0205	149.00	152.00	3.00	0.96	including	ZDDH0214	204.50	215.50	11.00	1.20	
ZDDH0205	163.00	166.50	3.50	2.09	including	ZDDH0214	204.50	211.10	6.60	1.91	including
ZDDH0205	174.00	175.00	1.00	2.05	including	ZDDH0214	236.00	240.63	4.63	0.61	
ZDDH0205	194.50	197.00	2.50	2.30	including	ZDDH0214	241.50	242.13	0.63	3.08	
ZDDH0206	22.00	22.30	0.30	1.31		ZDDH0214	354.00	355.92	1.92	2.23	
ZDDH0206	125.29	127.53	2.24	11.61		ZDDH0214	358.00	359.00	1.00	0.72	
ZDDH0206	155.00	157.00	2.00	1.72		ZDDH0214	363.00	364.00	1.00	0.50	
ZDDH0206	203.97	209.00	5.03	0.78		ZDDH0214	400.00	439.00	39.00	0.62	
ZDDH0206	221.50	227.10	5.60	1.15		ZDDH0214	415.00	416.00	1.00	8.06	including
ZDDH0207	2.50	6.74	4.24	0.82		ZDDH0214	430.00	431.00	1.00	1.33	including
ZDDH0207	106.00	162.00	56.00	0.85		ZDDH0214	436.00	438.00	2.00	2.42	including
ZDDH0207	115.70	116.60	0.90	14.95		ZDDH0215	98.40	100.50	2.10	5.83	
ZDDH0207	138.00	145.00	7.00	3.98		ZDDH0215	196.98	229.40	32.42	0.86	
ZDDH0207	159.00	160.00	1.00	2.79		ZDDH0215	205.20	219.00	13.80	1.68	including
ZDDH0207	216.44	219.50	3.06	0.86		ZDDH0215	205.20	206.00	0.80	9.37	including
ZDDH0207	223.00	224.00	1.00	2.29		ZDDH0215	217.00	219.00	2.00	6.40	including
ZDDH0207	237.50	238.00	0.50	1.17		ZDDH0215	304.00	304.80	0.80	2.13	
ZDDH0207	334.09	334.40	0.31	0.74		ZDDH0215	309.90	310.56	0.66	1.33	
ZDDH0208	8.00	8.50	0.50	0.64		ZDDH0216	204.00	211.60	7.60	0.55	
ZDDH0208	404.50	405.25	0.75	0.55		ZDDH0216	204.00	206.00	2.00	1.72	
ZDDH0208	472.00	473.00	1.00	0.59		ZDDH0217	323.70	325.31	1.61	0.58	
ZDDH0208	483.00	485.00	2.00	0.68		ZDDH0217	359.00	360.00	1.00	0.65	
ZDDH0208	494.00	539.00	45.00	0.80		ZDDH0217	372.00	378.00	6.00	0.48	
ZDDH0208	496.00	515.00	19.00	1.41	including	ZDDH0217	377.00	378.00	1.00	1.47	
ZDDH0208	496.00	503.51	7.51	2.67	including	ZDDH0217	410.00	413.00	3.00	0.62	
ZDDH0208	537.00	538.24	1.24	2.72	including	ZDDH0217	411.29	412.00	0.71	1.19	
ZDDH0208	547.00	548.00	1.00	1.07	including	ZDDH0217	430.00	431.00	1.00	0.55	
ZDDH0208	579.00	580.00	1.00	0.59		ZDDH0217	482.50	483.23	0.73	1.29	
ZDDH0208	593.00	597.90	4.90	0.61		ZDDH0217	494.00	496.00	2.00	1.33	
ZDDH0209	143.30	144.00	0.70	4.47		ZDDH0218	13.00	14.00	1.00	2.28	
ZDDH0209	228.80	233.00	4.20	0.41		ZDDH0218	232.50	233.00	0.50	6.98	
ZDDH0209	228.80	230.00	1.20	0.99	including	ZDDH0218	260.00	261.00	1.00	0.51	
ZDDH0209	249.00	250.00	1.00	0.75		ZDDH0218	246.90	251.50	4.60	1.76	
ZDDH0209	341.00	342.00	1.00	0.85		ZDDH0218	248.58	251.00	2.42	2.85	including
ZDDH0209	360.00	361.00	1.00	1.25		ZDDH0218	380.41	380.85	0.44	2.39	
ZDDH0210	11.00	22.00	11.00	0.71		ZDDH0218	397.00	397.50	0.50	1.92	
ZDDH0210	13.50	19.00	5.50	1.16	including	ZDDH0218	403.00	404.00	1.00	0.83	
ZDDH0210	40.43	46.00	5.57	1.64		ZDDH0218	433.25	440.00	6.75	0.76	
ZDDH0210	44.10	45.05	0.95	7.08	including	ZDDH0218	434.00	435.00	1.00	1.31	including
ZDDH0210	76.00	87.00	11.00	3.47		ZDDH0218	439.00	440.00	1.00	2.86	including
ZDDH0210	79.00	86.00	7.00	5.36	including	ZDDH0218	516.00	517.00	1.00	1.01	
ZDDH0210	82.00	85.00	3.00	11.33	including	ZDDH0219	130.00	137.00	7.00	2.37	
ZDDH0210	131.00	132.00	1.00	1.19		ZDDH0219	130.85	132.00	1.15	8.84	
ZDDH0210	148.00	149.00	1.00	2.41		ZDDH0220	90.00	96.00	6.00	0.51	
ZDDH0210	163.00	165.00	2.00	1.16		ZDDH0220	109.00	123.00	14.00	0.69	
ZDDH0211	11.00	12.00	1.00	0.51		ZDDH0220	109.00	111.25	2.25	2.06	including
ZDDH0211	59.90	83.28	23.38	0.56		ZDDH0220	176.06	177.00	0.94	0.97	
ZDDH0211	63.00	66.00	3.00	3.18	including	ZDDH0220	182.00	184.00	2.00	0.82	
ZDDH0211	79.00	80.00	1.00	0.84	including	ZDDH0220	188.00	189.00	1.00	0.54	
ZDDH0211	101.00	113.90	12.90	0.74		ZDDH0220	204.00	205.00	1.00	1.14	
ZDDH0211	101.00	102.00	1.00	1.22	including	ZDDH0220	231.00	232.00	1.00	0.97	
ZDDH0211	105.40	106.40	1.00	1.09	including	ZDDH0220	251.00	252.00	1.00	0.84	
ZDDH0211	112.90	113.90	1.00	4.62	including	ZDDH0220	290.00	294.00	4.00	2.41	
ZDDH0211	191.00	192.00	1.00	0.88		ZDDH0220	326.00	329.80	3.80	0.80	
ZDDH0211	257.00	258.00	1.00	1.40		ZDDH0220	357.47	359.35	1.88	6.40	

Hole_ID	From (m)	To (m)	Interval	Au (g/t)	Comments
ZDDH0221	203.00	205.00	2.00	0.44	Drone Hill
ZDDH0222A	109.00	111.00	2.00	1.24	Drone Hill
ZDDH0222A	110.00	111.00	1.00	2.03	including
ZDDH0222A	174.00	175.00	1.00	0.69	
ZDDH0222A	205.70	206.00	0.30	1.27	
ZDDH0222A	235.00	236.00	1.00	0.65	
ZDDH0223	148.00	154.50	6.50	1.12	Ternera East
ZDDH0223	153.00	154.50	1.50	3.17	including
ZDDH0223	189.00	190.00	1.00	0.52	
ZDDH0223	198.15	199.00	0.85	0.80	
ZDDH0223	389.00	390.00	1.00	0.82	
ZDDH0223	404.00	405.00	1.00	1.01	
ZDDH0223	500.00	507.50	7.50	0.38	
ZDDH0223	506.00	507.50	1.50	0.99	including
ZDDH0223	521.40	522.90	1.50	0.90	
ZDDH0223	535.50	536.00	0.50	2.47	
ZDDH0224	255.30	256.20	0.90	1.03	Drone Hill
ZDDH0225	93.63	94.50	0.87	1.90	
ZDDH0225	162.00	163.00	1.00	1.13	
ZDDH0225	329.00	330.00	1.00	0.77	
ZDDH0225	371.00	372.94	1.94	1.12	
ZDDH0225	377.00	378.61	1.61	1.00	
ZDDH0225	398.50	400.40	1.90	0.56	
ZDDH0225	435.50	526.00	90.50	0.56	
ZDDH0225	435.50	446.98	11.48	1.68	including
ZDDH0225	440.00	444.84	4.84	3.44	including
ZDDH0225	478.00	479.00	1.00	6.06	including
ZDDH0225	493.00	497.50	4.50	1.23	including
ZDDH0225	509.10	511.60	2.50	2.65	including
ZDDH0225	524.00	525.00	1.00	3.05	including
ZDDH0226	344.00	350.00	6.00	0.33	Ternera East
ZDDH0226	349.00	350.00	1.00	0.64	including
ZDDH0226	402.30	405.45	3.15	0.39	
ZDDH0226	402.30	402.63	0.33	1.89	including
ZDDH0227	48.50	49.70	1.20	3.22	
ZDDH0227	143.00	144.00	1.00	1.33	
ZDDH0227	156.00	157.00	1.00	0.93	
ZDDH0227	178.00	188.50	10.50	0.42	
ZDDH0227	179.00	180.00	1.00	1.20	including
ZDDH0227	186.00	186.95	0.95	1.05	including
ZDDH0227	204.00	206.00	2.00	1.08	
ZDDH0227	245.00	249.60	4.60	0.67	
ZDDH0227	245.00	246.00	1.00	2.37	including
ZDDH0227	308.00	309.00	1.00	1.92	
ZDDH0228	266.00	275.00	9.00	1.19	Ternera East
ZDDH0229	52.50	53.10	0.60	1.08	
ZDDH0229	101.70	128.00	26.30	2.91	
ZDDH0229	122.00	127.50	5.50	13.22	including
ZDDH0229	139.50	140.12	0.62	1.07	
ZDDH0229	150.00	150.55	0.55	1.49	
ZDDH0229	242.00	242.55	0.55	1.71	
ZDDH0229	327.00	372.00	45.00	1.00	
ZDDH0229	327.00	352.39	25.39	1.63	including
ZDDH0229	336.00	352.39	16.39	2.26	including
ZDDH0229	336.00	339.40	3.40	5.87	including
ZDDH0230	94.30	144.00	49.70	0.40	
ZDDH0230	94.30	100.30	6.00	1.81	including
ZDDH0230	118.00	120.00	2.00	1.20	including
ZDDH0230	143.00	144.00	1.00	1.02	including
ZDDH0231	41.30	42.00	0.70	0.78	
ZDDH0231	407.00	430.00	23.00	0.61	
ZDDH0231	411.00	417.29	6.29	1.15	including
ZDDH0231	427.00	429.00	2.00	2.30	including
ZDDH0232	178.40	179.00	0.60	1.23	
ZDDH0232	484.00	485.00	1.00	0.97	
ZDDH0232	510.70	512.00	1.30	3.75	

Hole_ID	From (m)	To (m)	Interval	Au (g/t)	Comments
ZDDH0233	67.00	68.00	1.00	2.62	
ZDDH0233	146.00	163.00	17.00	0.52	
ZDDH0233	148.00	154.00	6.00	1.01	including
ZDDH0233	178.00	199.14	21.14	0.61	
ZDDH0233	178.86	187.75	8.89	1.03	
ZDDH0233	199.00	200.00	1.00	3.15	
ZDDH0233	243.00	244.00	1.00	0.53	
ZDDH0233	271.38	273.00	1.62	0.57	
ZDDH0233	288.50	289.30	0.80	1.23	
ZDDH0233	304.00	304.51	0.51	3.86	
ZDDH0233	339.59	345.50	5.91	0.53	
ZDDH0233	341.00	341.84	0.84	1.62	including
ZDDH0233	354.00	355.00	1.00	1.62	
ZDDH0234	10.00	18.70	8.70	0.38	
ZDDH0234	18.00	18.70	0.70	1.69	including
ZDDH0234	32.00	36.00	4.00	0.77	
ZDDH0234	34.00	35.00	1.00	1.56	including
ZDDH0234	44.00	45.00	1.00	4.64	
ZDDH0234	118.66	131.00	12.34	0.36	
ZDDH0234	119.50	120.10	0.60	3.69	including
ZDDH0234	127.76	128.76	1.00	1.47	including
ZDDH0234	183.58	184.00	0.42	2.08	
ZDDH0234	197.00	202.66	5.66	0.77	
ZDDH0234	198.30	201.00	2.70	1.07	including
ZDDH0234	262.30	267.50	5.20	0.53	
ZDDH0234	268.50	269.50	1.00	1.15	including
ZDDH0234	290.00	292.00	2.00	2.17	
ZDDH0234	299.00	300.00	1.00	0.97	
ZDDH0235	17.00	18.00	1.00	0.56	
ZDDH0235	169.00	170.00	1.00	1.30	
ZDDH0235	212.00	298.00	86.00	0.68	
ZDDH0235	212.00	215.60	3.60	1.54	including
ZDDH0235	246.00	281.00	35.00	1.41	including
ZDDH0235	246.00	247.00	1.00	4.60	including
ZDDH0235	267.26	280.00	12.74	2.84	including
ZDDH0235	267.26	272.00	4.74	5.24	including
ZDDH0235	279.00	280.00	1.00	8.44	including
ZDDH0235	324.00	327.18	3.18	1.16	
ZDDH0235	470.00	486.50	16.50	0.86	
ZDDH0235	478.40	481.00	2.60	4.39	including
ZDDH0236	345.46	436.00	90.54	0.92	
ZDDH0236	381.70	432.00	50.30	1.06	including
ZDDH0236	345.46	355.52	10.06	2.53	including
ZDDH0236	381.70	388.00	6.30	2.44	including
ZDDH0236	400.80	426.10	25.30	1.28	including
ZDDH0236	411.85	416.35	4.50	3.29	including
ZDDH0236	411.55	425.80	14.25	1.75	including
ZDDH0237	56.41	57.10	0.69	1.89	
ZDDH0237	197.70	199.75	2.05	7.13	
ZDDH0237A	11.00	18.00	7.00	0.35	
ZDDH0237A	17.25	18.00	0.75	1.04	including
ZDDH0237A	223.00	252.70	29.70	0.70	
ZDDH0237A	236.00	251.70	15.70	1.06	including
ZDDH0237A	247.00	251.70	4.70	2.46	including
ZDDH0237A	298.30	299.00	0.70	0.93	
ZDDH0237A	425.30	426.20	0.90	1.32	
ZDDH0238	69.00	70.00	1.00	0.58	Drone Hill
ZDDH0238	96.00	98.22	2.22	0.94	
ZDDH0238	227.00	230.85	3.85	1.73	
ZDDH0238	227.00	228.40	1.40	4.14	including
ZDDH0238	359.28	359.90	0.62	1.24	
ZDDH0238	371.50	372.80	1.30	0.54	
ZDDH0238	377.00	378.00	1.00	0.92	
ZDDH0239	21.00	22.00	1.00	0.99	
ZDDH0239	84.00	85.00	1.00	1.02	
ZDDH0239	149.00	150.00	1.00	11.05	
ZDDH0239	164.00	164.70	0.70	1.26	

Hole_ID	From (m)	To (m)	Interval	Au (g/t)	Comments	Hole_ID	From (m)	To (m)	Interval	Au (g/t)	Comments
ZDDH0240	208.40	214.00	5.60	0.32		ZDDH0249	52.00	63.50	11.50	0.58	
ZDDH0240	211.50	212.12	0.62	0.79		ZDDH0249	52.00	53.00	1.00	2.30	
ZDDH0240	272.50	273.03	0.53	1.11		ZDDH0249	62.18	63.50	1.32	1.85	
ZDDH0241	309.00	309.86	0.86	0.68		ZDDH0249	304.00	305.00	1.00	1.43	
ZDDH0241	334.50	338.57	4.07	0.34		ZDDH0249	317.30	317.60	0.30	1.18	
ZDDH0241	449.63	449.93	0.30	1.11		ZDDH0250	40.00	41.00	1.00	2.59	
ZDDH0241	462.00	463.00	1.00	0.58		ZDDH0250	75.72	77.77	2.05	0.54	
ZDDH0241	468.16	471.39	3.23	0.40		ZDDH0250	89.00	90.00	1.00	0.51	
ZDDH0242	30.00	32.00	2.00	4.14		ZDDH0251			0.00		NSI
ZDDH0242	54.00	55.00	1.00	0.70		ZDDH0252	34.00	36.00	2.00	0.60	
ZDDH0242	110.50	112.00	1.50	1.25		ZDDH0252	45.00	46.00	1.00	0.55	
ZDDH0242	225.00	296.00	71.00	1.58		ZDDH0252	79.00	80.00	1.00	1.30	
ZDDH0242	243.90	261.00	17.10	5.10	including	ZDDH0252	293.30	312.00	18.70	0.87	
ZDDH0242	256.00	265.66	9.66	7.58	including	ZDDH0252	294.80	307.75	12.95	1.12	including
ZDDH0242	246.00	252.15	6.15	3.67	including	ZDDH0252	294.80	296.16	1.36	6.60	including
ZDDH0243	72.20	72.85	0.65	0.96		ZDDH0252	420.00	422.00	2.00	0.50	
ZDDH0243	82.00	91.00	9.00	0.55		ZDDH0252	438.00	441.00	3.00	1.08	
ZDDH0243	90.00	91.00	1.00	2.23		ZDDH0252	454.00	454.54	0.54	1.79	
ZDDH0243	114.77	124.47	9.70	0.46		ZDDH0252	525.00	529.55	4.55	1.06	
ZDDH0243	114.77	116.00	1.23	1.83	including	ZDDH0252	528.00	529.55	1.55	2.03	
ZDDH0243	148.85	167.00	18.15	0.45		ZDDH0252	544.30	545.00	0.70	1.60	
ZDDH0243	149.50	153.00	3.50	1.10	including	ZDDH0253	57.00	61.00	4.00	1.09	
ZDDH0243	165.18	166.00	0.82	1.97	including	ZDDH0253	98.00	99.00	1.00	0.64	
ZDDH0243	151.00	152.00	1.00	2.00	including	ZDDH0253	270.00	271.00	1.00	0.84	
ZDDH0243	204.00	205.00	1.00	0.77		ZDDH0254			0.00		Toro Blanco - NSI
ZDDH0243	313.13	315.00	1.87	0.75		ZDDH0254A	404.00	405.00	1.00	0.52	Toro Blanco
ZDDH0243	324.00	325.00	1.00	0.54		ZDDH0254A	413.00	414.00	1.00	0.64	Toro Blanco
ZDDH0244	43.00	44.00	1.00	0.39	Toro Blanco	ZDDH0255	73.00	74.00	1.00	0.86	
ZDDH0244	295.70	296.20	0.50	0.52		ZDDH0255	104.00	105.00	1.00	0.63	
ZDDH0244	375.00	376.16	1.16	0.98		ZDDH0255	353.00	372.00	19.00	1.40	
ZDDH0245	216.00	309.50	93.50	0.70		ZDDH0255	356.67	359.50	2.83	7.29	including
ZDDH0245	216.00	217.00	1.00	2.41	including	ZDDH0255	370.00	371.00	1.00	3.22	including
ZDDH0245	230.00	280.00	50.00	1.12	including	ZDDH0255	432.35	433.00	0.65	0.98	
ZDDH0245	233.00	263.00	30.00	1.78	including	ZDDH0255	469.33	469.66	0.33	2.25	
ZDDH0245	233.00	253.53	20.53	2.17	including	ZDDH0255	533.00	534.00	1.00	4.18	
ZDDH0245	233.00	242.00	9.00	3.44	including	ZDDH0256	35.00	36.00	1.00	0.98	
ZDDH0245	251.79	253.53	1.74	4.69	including	ZDDH0256	48.00	49.00	1.00	0.64	
ZDDH0245	295.00	296.00	1.00	3.11	including	ZDDH0256	70.80	71.80	1.00	0.89	
ZDDH0245	361.00	362.00	1.00	1.35		ZDDH0257	307.00	315.00	8.00	0.66	
ZDDH0246	140.70	142.35	1.65	1.49		ZDDH0257	307.00	310.00	3.00	1.31	including
ZDDH0246	148.00	149.00	1.00	1.58		ZDDH0258	10.00	11.20	1.20	10.25	
ZDDH0246	211.50	212.15	0.65	2.68		ZDDH0258	107.00	109.00	2.00	0.54	
ZDDH0246	400.00	401.00	1.00	0.85		ZDDH0258	134.00	135.00	1.00	1.28	
ZDDH0246	409.40	410.00	0.60	3.88		ZDDH0259	38.65	39.00	0.35	0.74	
ZDDH0246	442.50	528.50	86.00	0.56		ZDDH0259	96.00	105.00	9.00	2.43	
ZDDH0246	442.50	469.00	26.50	1.31	including	ZDDH0259	96.00	97.84	1.84	10.86	including
ZDDH0246	451.00	456.00	5.00	3.55	including	ZDDH0259	136.00	137.00	1.00	1.86	
ZDDH0246	516.00	516.90	0.90	2.28		ZDDH0259	152.00	157.00	5.00	0.51	
ZDDH0247	94.00	95.00	1.00	0.59		ZDDH0259	145.70	155.00	9.30	1.19	
ZDDH0247	105.00	111.00	6.00	0.58		ZDDH0259	232.70	243.00	10.30	0.73	
ZDDH0247	105.00	105.50	0.50	4.46		ZDDH0259	232.70	235.00	2.30	2.08	
ZDDH0247	208.00	210.00	2.00	1.17		ZDDH0259	242.13	243.00	0.87	1.91	
ZDDH0247	290.00	300.35	10.35	0.50		ZDDH0259	258.00	258.32	0.32	2.32	
ZDDH0247	291.90	294.00	2.10	1.17	including	ZDDH0259	308.00	309.00	1.00	4.51	
ZDDH0247	351.73	359.33	7.60	1.10		ZDDH0260	81.50	82.00	0.50	1.23	
ZDDH0247	357.00	359.33	2.33	2.31	including	ZDDH0260	98.00	100.00	2.00	0.43	
ZDDH0248	147.20	147.83	0.63	0.87		ZDDH0260	238.00	239.00	1.00	0.49	
ZDDH0248	163.33	165.40	2.07	1.03		ZDDH0260	296.00	298.00	2.00	1.14	
ZDDH0248	385.56	386.43	0.87	0.93		ZDDH0260	305.00	306.00	1.00	0.55	
ZDDH0248	404.44	406.00	1.56	1.09		ZDDH0260	387.50	388.00	0.50	0.86	
ZDDH0248	430.00	431.00	1.00	0.52		ZDDH0260	424.67	428.33	3.66	0.96	
ZDDH0248	440.00	440.86	0.86	0.72		ZDDH0260	443.00	444.00	1.00	0.78	
ZDDH0248	472.65	475.46	2.81	5.62		ZDDH0260	500.00	504.00	4.00	0.76	
ZDDH0248	498.18	510.57	12.39	0.51		ZDDH0260	501.00	503.00	2.00	1.07	including
ZDDH0248	498.18	499.00	0.82	4.42	including	ZDDH0260	518.00	519.00	1.00	1.19	
ZDDH0248	544.00	545.00	1.00	1.06		ZDDH0260	537.00	540.00	3.00	1.05	
ZDDH0248	536.00	537.00	1.00	3.05		ZDDH0260	528.00	530.00	2.00	0.87	
ZDDH0248	560.00	561.00	1.00	1.19							

Hole_ID	From (m)	To (m)	Interval	Au (g/t)	Comments	Hole_ID	From (m)	To (m)	Interval	Au (g/t)	Comments
ZDDH0261	32.20	55.00	22.80	1.96		ZDDH0271	414.55	416.00	1.45	9.68	including
ZDDH0261	41.00	55.00	14.00	2.50	including	ZDDH0271	425.00	429.00	4.00	0.93	including
ZDDH0261	41.00	42.00	1.00	25.00	including	ZDDH0271	457.00	479.20	22.20	1.15	including
ZDDH0261	52.00	55.00	3.00	4.03	including	ZDDH0271	461.00	473.61	12.61	1.42	including
ZDDH0261	113.00	114.00	1.00	2.81		ZDDH0271	457.00	458.00	1.00	3.65	including
ZDDH0261	170.00	170.30	0.30	1.38		ZDDH0271	514.00	515.00	1.00	2.34	
ZDDH0262	15.20	16.00	0.80	1.26		ZDDH0271	531.00	532.00	1.00	0.57	
ZDDH0262	60.50	62.00	1.50	16.91		ZDDH0271	560.00	561.00	1.00	0.59	
ZDDH0263	44.00	44.65	0.65	0.96		ZDDH0272	371.00	371.50	0.50	3.04	
ZDDH0263	54.00	55.00	1.00	0.63		ZDDH0272	411.53	412.00	0.47	0.75	
ZDDH0263	71.00	71.60	0.60	1.02		ZDDH0272	457.25	458.00	0.75	0.50	
ZDDH0263	90.00	91.00	1.00	1.32		ZDDH0272	466.00	467.00	1.00	0.73	
ZDDH0263	94.00	97.00	3.00	0.55		ZDDH0272	488.00	488.50	0.50	0.83	
ZDDH0263	110.00	112.00	2.00	0.74		ZDDH0272	508.00	510.00	2.00	0.71	
ZDDH0263	230.00	312.00	82.00	0.50		ZDDH0272	522.00	523.00	1.00	2.13	
ZDDH0263	230.65	252.32	21.67	1.54	including	ZDDH0273	29.04	30.70	1.66	5.04	
ZDDH0263	230.33	232.00	1.67	4.04	including	ZDDH0273	118.00	145.35	27.35	1.12	
ZDDH0263	239.00	244.00	5.00	1.83	including	ZDDH0273	118.70	131.55	12.85	2.17	including
ZDDH0263	249.00	252.00	3.00	3.76	including	ZDDH0273	118.70	124.35	5.65	4.08	including
ZDDH0263	276.70	279.00	2.30	0.90		ZDDH0273	210.00	211.00	1.00	0.63	
ZDDH0263	295.50	296.50	1.00	2.15		ZDDH0273	219.00	219.61	0.61	1.94	
ZDDH0263	301.00	302.00	1.00	0.59		ZDDH0273	257.80	260.00	2.20	1.98	
ZDDH0263	311.00	312.00	1.00	0.58		ZDDH0273	363.00	374.00	11.00	0.59	
ZDDH0264	65.00	66.00	1.00	1.00		ZDDH0273	368.00	371.00	3.00	1.10	including
ZDDH0264	135.59	136.40	0.81	6.83		ZDDH0273	402.00	408.00	6.00	1.03	
ZDDH0265	25.80	102.75	76.95	0.62		ZDDH0273	406.90	408.00	1.10	4.42	including
ZDDH0265	25.80	27.00	1.20	1.60	including	ZDDH0274	303.00	346.00	43.00	1.14	
ZDDH0265	33.00	34.00	1.00	3.48	including	ZDDH0274	317.00	339.00	22.00	2.01	including
ZDDH0265	59.00	64.27	5.27	1.38	including	ZDDH0274	317.00	329.00	12.00	2.50	including
ZDDH0265	82.00	102.75	20.75	1.51	including	ZDDH0274	321.00	323.00	2.00	7.24	including
ZDDH0265	92.00	102.75	10.75	2.40	including	ZDDH0274	335.67	339.00	3.33	2.63	including
ZDDH0265	251.00	252.00	1.00	1.60		ZDDH0275	160.70	170.44	9.74	4.54	
ZDDH0266	276.40	277.44	1.04	2.32		ZDDH0275	165.00	170.40	5.40	7.91	including
ZDDH0266	333.64	336.50	2.86	2.38		ZDDH0275	183.60	184.38	0.78	1.43	
ZDDH0266	333.95	335.50	1.55	3.65	including	ZDDH0275	245.40	288.00	42.60	0.47	
ZDDH0267	14.00	15.00	1.00	1.30		ZDDH0275	245.40	246.00	0.60	4.80	including
ZDDH0267	74.00	127.91	53.91	0.47		ZDDH0275	261.40	272.00	10.60	0.98	including
ZDDH0267	73.00	74.00	1.00	4.01	including	ZDDH0275	379.00	383.46	4.46	1.74	
ZDDH0267	106.00	110.50	4.50	2.03	including	ZDDH0276	136.00	137.00	1.00	0.81	
ZDDH0267	122.00	123.00	1.00	4.54	including	ZDDH0276	170.50	171.55	1.05	0.43	
ZDDH0267	163.00	164.00	1.00	2.90		ZDDH0276	276.00	277.10	1.10	4.55	
ZDDH0267	183.88	189.96	6.08	0.76		ZDDH0276	311.00	312.30	1.30	0.52	
ZDDH0267	183.88	185.00	1.12	3.02	including	ZDDH0276	372.33	376.00	3.67	0.48	
ZDDH0267	226.60	231.00	4.40	0.98		ZDDH0276	392.00	393.00	1.00	0.76	
ZDDH0267	226.60	227.50	0.90	3.66	including	ZDDH0277	21.00	22.00	1.00	0.71	
ZDDH0267	243.00	244.00	1.00	1.33		ZDDH0277	147.00	147.50	0.50	1.41	
ZDDH0267	249.00	250.00	1.00	1.45		ZDDH0277	189.60	194.08	4.48	0.92	
ZDDH0267	301.00	302.00	1.00	0.73		ZDDH0277	197.60	197.98	0.38	7.42	
ZDDH0268	167.00	167.50	0.50	1.87		ZDDH0277	205.80	206.50	0.70	1.44	
ZDDH0268	187.05	200.00	12.95	3.65		ZDDH0277	242.00	243.00	1.00	2.51	
ZDDH0268	188.30	191.00	2.70	6.76	including	ZDDH0277	256.20	257.03	0.83	3.29	
ZDDH0268	197.00	200.00	3.00	6.30	including	ZDDH0277	264.00	265.00	1.00	0.85	
ZDDH0269	205.40	206.00	0.60	0.70	South Step Out	ZDDH0277	310.00	311.00	1.00	1.01	
ZDDH0269	223.80	224.21	0.41	2.39		ZDDH0277	368.20	368.99	0.79	0.51	
ZDDH0270	17.00	18.00	1.00	0.86		ZDDH0277	393.30	393.98	0.68	0.93	
ZDDH0270	21.00	22.00	1.00	0.57		ZDDH0277	417.00	418.00	1.00	0.61	
ZDDH0270	37.00	38.90	1.90	0.98		ZDDH0278	0.00	2.00	2.00	0.69	
ZDDH0270	74.00	75.00	1.00	3.48		ZDDH0278	20.00	23.40	3.40	0.55	
ZDDH0270	109.48	110.00	0.52	2.93		ZDDH0278	29.75	30.50	0.75	3.68	
ZDDH0271	23.52	23.92	0.40	0.90		ZDDH0278	54.00	56.50	2.50	0.73	
ZDDH0271	331.00	361.00	30.00	0.44		ZDDH0278	65.00	66.00	1.00	1.39	
ZDDH0271	332.00	333.00	1.00	1.45	including	ZDDH0278	94.00	97.10	3.10	5.07	
ZDDH0271	344.50	345.00	0.50	4.28	including	ZDDH0278	128.00	129.00	1.00	0.68	
ZDDH0271	351.00	352.50	1.50	1.80	including	ZDDH0278	139.00	140.00	1.00	1.85	
ZDDH0271	358.00	361.00	3.00	1.44	including						
ZDDH0271	388.00	479.20	91.20	0.54							
ZDDH0271	397.57	399.50	1.93	0.99	including						

*For full results for holes ZDDH00001 to ZDDH00016, refer to Plukka Ltd Prospectus 30 October 2019. For results of ZDDH00017 to ZDDH00170 refer to TSO:ASX announcements 6 March, 12 March, 27 April, 6 May, 27 May 2020, 10 June 2020, 26 August 2020, 4 September 2020, 9 October 2020, 23 October 2020, 4 November 2020, 24 November 2020, 16 December 2020, 22 December 2020, 11 January 2021, 27 January 2021, 19 February 2021, 5 March 2021, 23 March 2021, 29 March 2021, 29 April 2021, 25 May 2021, 11 June 2021, 25 June 2021, 6 July 2021, 28 July 2021, 5 August 2021, 11 August 2021, 19 August 2021, 27 August 2021, 16 September 2021, 5 October 2021, 20 October 2021, 3 November 2021, 19 November 2021, 6 December 2021, 12 January 2022, 4 February 2022 and 22 February 2022

APPENDIX 3 – DRILL HOLE DETAILS

Hole ID	Hole Location			Hole Orientation		Drill Depth (m)
	Northing	Eastings	Elevation	Dip	Azimuth	
ZDDH00028	7036049	341605	581	-60	240	220.60
ZDDH00029	7036351	341849	603	-60	240	250.00
ZDDH00030	7036061	341676	569	-60	240	250.00
ZDDH00031	7036290	341875	605	-60	240	320.00
ZDDH00032	7036047	341757	584	-60	60	285.90
ZDDH00033	7036305	341846	599	-60	240	205.00
ZDDH00034	7036149	341781	579	-60	240	220.60
ZDDH00035	7036349	341876	612	-60	240	283.20
ZDDH00036	7036169	341840	597	-60	240	280.30
ZDDH00037	7036387	341829	624	-60	240	230.00
ZDDH00038	7036118	341693	584	-60	240	299.30
ZDDH00039	7036452	341942	658	-60	240	310.00
ZDDH00040	7036257	341878	607	-60	240	300.00
ZDDH00041	7036092	341621	591	-60	240	200.00
ZDDH00042	7036595	341800	610	-60	240	201.00
ZDDH00043	7036203	341796	584	-60	240	250.00
ZDDH00044	7036501	341643	588	-60	240	308.20
ZDDH00045	7036243	341751	610	-60	240	271.20
ZDDH00046	7036220	341742	613	-60	240	260.00
ZDDH00047	7036100	341774	578	-60	240	320.00
ZDDH00048	7036298	341760	615	-60	240	230.00
ZDDH00049	7036228	341897	626	-60	240	300.00
ZDDH00050	7036327	341767	631	-60	240	250.00
ZDDH00051	7036127	341955	646	-60	240	364.40
ZDDH00052	7036144	341740	601	-60	240	200.00
ZDDH00053	7036251	341821	588	-60	240	300.00
ZDDH00054	7036573	341763	607	-60	240	350.00
ZDDH00055	7036235	341843	609	-60	240	341.00
ZDDH00056	7036538	341927	640	-60	240	305.30
ZDDH00057	7036231	341842	605	-60	60	360.50
ZDDH00058	7036484	341928	654	-60	240	300.00
ZDDH00059	7036189	341929	636	-60	240	320.00
ZDDH00060	7036348	341872	618	-60	60	290.00
ZDDH00061	7036499	341765	605	-60	240	299.40
ZDDH00062	7036333	341803	624	-60	240	300.00
ZDDH00063	7036466	341895	637	-60	60	337.30
ZDDH00064	7036096	341836	604	-60	240	326.80
ZDDH00065	7036542	341918	636	-60	60	269.30
ZDDH00066	7035966	341793	616	-60	60	474.80
ZDDH00067	7036389	341781	647	-60	240	306.80
ZDDH00068	7036371	341744	627	-60	240	323.00
ZDDH00069	7036094	341834	602	-60	60	426.70
ZDDH00070	7036397	341858	628	-60	240	294.20
ZDDH00071	7036112	341610	582	-60	240	223.20
ZDDH00072	7035932	341845	595	-60	60	450.70
ZDDH00073	7035917	341646	546	-60	60	290.20
ZDDH00074	7035972	341594	578	-60	240	257.70
ZDDH00075	7036167	341849	608	-60	60	354.80
ZDDH00076	7036607	341827	602	-60	60	320.66
ZDDH00077	7036179	341615	570	-60	240	225.00
ZDDH00078	7036053	341845	620	-60	60	423.90
ZDDH00079	7036268	341836	588	-60	60	302.00
ZDDH00080	7035745	341887	563	-60	60	419.50
ZDDH00081	7036142	341851	604	-60	240	322.70
ZDDH00082	7035610	341443	525	-60	60	370.20
ZDDH00083	7036088	341903	637	-60	240	455.80
ZDDH00084	7036417	341934	641	-60	60	262.70
ZDDH00085	7036324	341907	625	-60	240	362.90
ZDDH00086	7035715	341528	501	-60	60	200.00
ZDDH00087	7036455	341940	662	-60	60	252.60
ZDDH00088	7035878	341656	565	-60	240	226.90
ZDDH00089	7036129	341949	655	-60	60	352.40
ZDDH00090	7036258	341871	619	-60	60	358.00
ZDDH00091	7036002	341575	583	-60	240	210.20
ZDDH00092	7036358	341935	636	-60	60	407.40
ZDDH00093	7036124	341810	594	-60	240	318.00
ZDDH00094	7036185	341764	594	-60	240	395.60
ZDDH00095	7036630	341444	633	-60	60	310.00
ZDDH00096	7036349	341706	606	-60	240	268.90

Hole ID	Hole Location			Hole Orientation		Drill Depth (m)
	Northing	Eastings	Elevation	Dip	Azimuth	
ZDDH00097	7035954	341633	560	-6	240	184.00
ZDDH00098	7036389	341871	361	-60	240	331.70
ZDDH00099	7036199	341870	596	-60	240	350.00
ZDDH00100	7036354	341801	636	-60	240	280.20
ZDDH00101	7036227	341892	615	-60	60	317.90
ZDDH00102	7035940	341996	635	-60	60	347.00
ZDDH00103	7036308	341726	606	-60	240	293.00
ZDDH00104	7036336	341992	660	-60	60	375.60
ZDDH00105	7036411	342036	695	-60	60	436.20
ZDDH00106	7036124	341880	613	-60	60	515.10
ZDDH00107	7036193	341925	632	-60	60	444.20
ZDDH00108	7036386	341972	670	-60	60	413.60
ZDDH00109	7036044	341891	632	-60	240	456.90
ZDDH00110	7036277	341916	623	-60	60	294.50
ZDDH00111	7036486	341928	659	-60	60	300.10
ZDDH00112	7036013	341871	636	-60	60	380.60
ZDDH00113	7036042	341885	632	-60	60	329.60
ZDDH00114	7036379	341916	624	-60	60	339.40
ZDDH00115	7035873	342038	621	-60	60	362.50
ZDDH00116	7035998	341961	685	-60	60	289.10
ZDDH00117	7036306	341968	613	-60	60	357.40
ZDDH00118	7036603	341939	659	-60	60	245.40
ZDDH00119	7036357	342134	646	-60	240	384.40
ZDDH00120	7036005	341906	637	-60	240	433.60
ZDDH00121	7036435	341981	646	-60	60	309.80
ZDDH00122	7036019	341541	574	-60	240	200.00
ZDDH00123	7036211	341913	631	-60	60	404.70
ZDDH00124	7036175	341897	625	-60	240	284.80
ZDDH00125	7036292	342113	677	-60	240	419.50
ZDDH00126	7035876	341647	560	-60	60	470.50
ZDDH00127	7036521	341933	647	-60	60	354.30
ZDDH00128	7035932	341845	596	-60	240	386.00
ZDDH00129	7036229	342096	664	-60	240	410.20
ZDDH00130	7035800	341644	544	-60	60	395.30
ZDDH00131	7036050	341850	618	-60	240	470.20
ZDDH00132	7036687	342156	712	-60	240	310.50
ZDDH00133	7035850	341604	551	-60	60	451.20
ZDDH00134	7036413	342231	638	-60	240	400.00
ZDDH00135	7036590	342166	708	-60	240	390.40
ZDDH00136	7035900	341697	578	-60	60	449.00
ZDDH00137	7036628	342156	705	-60	240	368.30
ZDDH00138	7036506	342306	643	-60	240	404.00
ZDDH00139	7036029	341683	571	60	240	345.00
ZDDH00140	7036578	342260	664	-60	240	397.70
ZDDH00141	7035863	341876	614	-60	240	501.00
ZDDH00142	7036000	341755	586	-60	240	400.00
ZDDH00143	7036305	341939	618	-60	240	326.40
ZDDH00144	7036365	341915	628	-60	60	325.25
ZDDH00145	7036339	341958	639	-60	240	370.00
ZDDH00146	7036304	341933	635	-60	60	446.00
ZDDH00147	7036187	341806	586	-60	240	290.00
ZDDH00148	7036110	341750	573	-60	240	309.00
ZDDH00149	7036431	342435	646	-60	240	497.00
ZDDH00150	7036176	341706	606	-60	240	325.00
ZDDH00151	7036203	341753	604	-60	240	16.60
ZDDH00152	7036278	341765	620	-60	240	197.00
ZDDH00153	7036029	341648	565	-60	240	275.00
ZDDH00154	7035962	341656	558	-60	240	300.00
ZDDH00155	7036014	341661	566	-60	240	274.80
ZDDH00156	7036211	341643	572	-60	240	174.50
ZDDH00157	7036226	341589	561	-60	240	125.00
ZDDH00158	7036194	341533	558	-60	240	115.70
ZDDH00159	7036139	341551	557	-60	240	302.00
ZDDH00160	7036324	341846	610	-60	60	325.00
ZDDH00161	7036266	341866	603	-60	240	320.20
ZDDH00162	7036382	341906	627	-60	240	353.10
ZDDH00163	7036514	342025	688	-60	240	350.00
ZDDH00164	7036375	341933	636	-60	240	350.00
ZDDH00165	7036489	341975	667	-60	240	370.00

Hole ID	Hole Location			Hole Orientation		Drill Depth (m)
	Northing	Easting	Elevation	Dip	Azimuth	
ZDDH00166	7036313	342374	626	-60	240	420.00
ZDDH00167	7035972	341626	558	-60	240	253.00
ZDDH00168	7036038	341621	572	-60	240	262.00
ZDDH00169	7036085	341789	588	-60	240	310.00
ZDDH00170	7036300	341808	610	-60	240	247.80
ZDDH00171	7035941	341691	571	-60	240	292.40
ZDDH00172	7036089	341672	586	-60	240	270.00
ZDDH00173	7036392	341969	651	-60	240	343.20
ZDDH00174	7035984	341813	625	-60	240	475.10
ZDDH00175	7036551	342049	670	-60	240	404.00
ZDDH00176	7036246	341706	604	-60	240	174.10
ZDDH00177	7036587	342073	687	-60	240	360.90
ZDDH00178	7036175	342139	638	-60	240	567.00
ZDDH00179	7036394	342060	686	-60	240	391.70
ZDDH00180	7036361	341833	619	-60	240	281.00
ZDDH00181A	7036323	341882	611	-60	240	330.30
ZDDH00182	7036375	342105	666	-60	240	443.00
ZDDH00183	7036136	341674	596	-60	240	389.00
ZDDH00184	7036145	341649	590	-60	240	250.00
ZDDH00185	7036270	341664	574	-60	240	125.04
ZDDH00186	7036184	341676	587	-60	240	111.80
ZDDH00186A	7036184	341676	587	-60	240	237.00
ZDDH00187	7036231	341638	567	-60	240	125.00
ZDDH00188	7036642	341820	621	-60	240	204.20
ZDDH00189	7036395	341811	633	-60	240	225.00
ZDDH00190	7036516	341982	400	-60	240	400.00
ZDDH00191	7036227	342166	641	-60	240	490.00
ZDDH00192	7036302	341972	644	-60	240	396.00
ZDDH00193	7036426	341808	630	-60	240	360.00
ZDDH00194	7035973	341708	582	-60	240	377.00
ZDDH00195	7036379	341987	655	-60	240	348.20
ZDDH00196A	7036149	341614	576	-60	240	180.00
ZDDH00197	7036135	341879	623	-60	240	300.00
ZDDH00198	7036156	341957	647	-60	240	380.00
ZDDH00199	7036372	341788	644	-60	240	257.00
ZDDH00200	7036265	341698	595	-60	240	210.20
ZDDH00201	7036052	341810	605	-60	240	341.00
ZDDH00202	7036048	341927	660	-60	240	511.20
ZDDH00203	7036384	342078	680	-60	240	403.90
ZDDH00204	7036142	342073	675	-60	240	372.00
ZDDH00205	7036207	341676	584	-60	240	229.00
ZDDH00206	7036548	342086	687	-60	240	334.60
ZDDH00207	7036486	342058	701	-60	240	320.00
ZDDH00208	7036486	342058	701	-60	240	337.50
ZDDH00209	7036246	342246	611	-60	240	407.40
ZDDH00210	7036411	341837	624	-60	240	235.40
ZDDH00211	7036450	341843	635	-60	240	294.90
ZDDH00212	7036513	341660	580	-60	240	75.03
ZDDH00213	7036170	342068	622	-60	240	466.50
ZDDH00214	7036296	342003	657	-60	240	452.06
ZDDH00215	7036451	342034	685	-60	240	337.80
ZDDH00216	7035933	342213	570	-60	240	242.00
ZDDH00217	7036515	342421	655	-60	240	513.20
ZDDH00218	7036512	342456	659	-60	240	344.00
ZDDH00219	7036377	342351	624	-60	240	150.10
ZDDH00219A	7036376	342354	639	-60	240	351.00
ZDDH00220	7036270	341999	658	-60	240	400.08
ZDDH00221	7036724	341835	678	-60	240	290.80
ZDDH00222	7036608	341662	611	-60	240	16.60
ZDDH00248	7035873	342038	606	-60	240	444.10
ZDDH00249	7036203	341587	557	-60	240	320.20
ZDDH00249	7036203	341587	557	-60	240	320.20
ZDDH00250	7036594	341754	612	-60	240	165.80
ZDDH00251	7036772	342315	728	-60	240	323.40
ZDDH00252	7035998	341961	640	-60	240	570.00
ZDDH00253	7036185	341597	552	-60	240	293.10
ZDDH00254	7037503	342389	843	-60	240	114.40
ZDDH00254A	7037506	342390	840	-60	240	420.00
ZDDH00255	7035940	341996	650	-60	240	409.60

Hole ID	Hole Location			Hole Orientation		Drill Depth (m)
	Northing	Easting	Elevation	Dip	Azimuth	
ZDDH00222A	7036612	341662	611	-60	240	284.20
ZDDH00223	7036334	342357	629	-60	240	551.00
ZDDH00224	7036534	341460	600	-60	240	311.00
ZDDH00225	7036333	342162	626	-60	240	545.00
ZDDH00226	7036207	342500	638	-60	240	450.00
ZDDH00227	7035941	341752	600	-60	240	418.10
ZDDH00228	7036418	342548	686	-60	240	451.60
ZDDH00229	7036408	342039	670	-60	240	420.00
ZDDH00230	7035751	341890	557	-60	240	370.00
ZDDH00231	7036743	342514	718	-60	240	455.50
ZDDH00232	7036281	342462	650	-60	240	550.00
ZDDH00233	7035966	341758	602	-60	240	373.50
ZDDH00234	7036441	341976	668	-60	240	350.00
ZDDH00235	7036346	342093	664	-60	240	512.90
ZDDH00236	7036249	342148	649	-60	240	480.00
ZDDH00237	7035845	341947	611	-60	240	228.70
ZDDH00237-A	7035846	341948	611	-60	240	239.70
ZDDH00238	7036832	341798	654	-60	240	400.06
ZDDH00239	7035845	341781	566	-60	240	300.08
ZDDH00240	7036741	341748	668	-60	240	371.40
ZDDH00241	7036377	342230	629	-60	240	550.00
ZDDH00242	7036416	341971	651	-60	240	350.00
ZDDH00243	7036499	342039	690	-60	240	370.00
ZDDH00244	7037581	342261	854	-60	240	426.10
ZDDH00245	7036315	342079	685	-60	240	420.00
ZDDH00246	7036106	342033	692	-60	240	530.00
ZDDH00247	7036360	342281	631	-50	60	450.00
ZDDH00256	7036405	341747	629	-60	240	300.00
ZDDH00257	7036533	342180	700	-60	240	462.00
ZDDH00258	7036302	341685	589	-60	240	154.80
ZDDH00259	7036116	341720	587	-60	240	339.80
ZDDH00260	7036432	342207	642	-60	240	429.00
ZDDH00261	7036473	341823	645	-60	240	230.50
ZDDH00262	7035958	341520	577	-60	240	184.80
ZDDH00263	7036064	341789	656	-60	240	323.50
ZDDH00264	7036539	341841	625	-60	240	359.10
ZDDH00265	7036533	342012	670	-60	240	290.00
ZDDH00266	7036770	341916	658	-60	240	363.77
ZDDH00267	7035994	341706	577	-60	240	344.30
ZDDH00268	7036346	342046	660	-60	240	350.00
ZDDH00269	7035563	342011	527	-60	240	360.00
ZDDH00270	7036355	341699	603	-60	240	158.50
ZDDH00271	7036311	342187	637	-60	240	611.00
ZDDH00272	7036367	342246	620	-60	240	574.00
ZDDH00273	7036342	342002	651	-60	240	430.00
ZDDH00274	7036274	342128	656	-60	240	460.60
ZDDH00275	7036267	342033	582	-60	240	400.00
ZDDH00276	7036532.63	342261.8	657	-60	240	401.50
ZDDH00277	7035906.87	341753.6	596	-60	240	419.50
ZDDH00278	7036007	341608	569	-60	240	198.15
ZDDH00279	7036244	342033	685	-60	240	586.00
ZDDH00280	7036828	342020	714	-60	240	350.00
ZDDH00281	7036005	341685	569	-60	240	339.10
ZDDH00282	7036625	342134	721	-60	240	422.00
ZDDH00283	7036526	342128	710	-60	240	350.00
ZDDH00284	7036121	341972	650	-60	240	495.00
ZDDH00285	7036274	342080	685	-60	240	470.00
ZDDH00286	7036400	341775	275	-60	240	317.00
ZDDH00287	7036220	342032	686	-60	240	522.00
ZDDH00288	7036394	342171	652	-60	240	565.50
ZDDH00289	7036126	341899	626	-60	240	350.06
ZDDH00290	7036257	341958	642	-60	240	540.04
ZDDH00291	7036202	342034	690	-60	240	459.00
ZDDH00292	7036202	341916	633	-60	240	300.00
ZDDH00293	7036372	342030	679	-60	240	480.00
ZDDH00294	7036173	341942	648	-60	240	370.00
ZDDH00295	7036177.56	341896.3	513	-60	240	527.50
ZDDH00296	7036307.34	342041.6	683	-60	240	520.00

Drill hole details for holes completed at El Zorro by Tesoro since February 2020. Co-ordinate system is PSAD56-19S.

APPENDIX 4 – JORC TABLES

JORC Table 1

Section 1: Sampling Techniques and Data

Criteria	JORC Code explanation	Commentary
Sampling techniques	<ul style="list-style-type: none"> Nature and quality of sampling (e.g. cut channels, random chips, or specific specialised industry standard measurement tools appropriate to the minerals under investigation, such as downhole gamma sondes, or handheld XRF instruments, etc.). These examples should not be taken as limiting the broad meaning of sampling. 	<p>Tesoro has completed 300 diamond drill holes for 100,235m in 2017, 2018, 2020, 2021 and 2022 (ZDDH0001 to ZDDH00294). Diamond drill holes were drilled with HQ. Sampling was half core at geologically defined and significant mineralisation boundaries.</p> <p>Tesoro considers the sampling methodologies to be appropriate for this style of mineralisation.</p>
	<ul style="list-style-type: none"> Include reference to measures taken to ensure sample representivity and the appropriate calibration of any measurement tools or systems used. 	<p>Tesoro Diamond drill holes were drilled with HQ. Sampling was half core at geological and significant mineralisation boundaries. Tesoro consider this appropriate for the style of mineralisation.</p>
	<ul style="list-style-type: none"> Aspects of the determination of mineralisation that are Material to the Public Report. In cases where 'industry standard' work has been done, this would be relatively simple (e.g. 'reverse circulation drilling was used to obtain 1 m samples from which 3 kg was pulverised to produce a 30 g charge for fire assay'). In other cases, more explanation may be required, such as where there is coarse gold that has inherent sampling problems. Unusual commodities or mineralisation types (e.g. submarine nodules) may warrant disclosure of detailed information. 	<p>Diamond drilling was used to obtain ½ core samples of various lengths (minimum 0.25m), from which 1kg of material was pulverised passing 200 mesh to produce a 50g charge for fire assay fusion with a gravimetric finish. Multielement assays were completed by 4-acid digest with a 2.5g charge. Tesoro consider these appropriate assay techniques.</p>
Drilling techniques	<ul style="list-style-type: none"> Drill type (e.g. core, reverse circulation, open-hole hammer, rotary air blast, auger, Bangka, sonic, etc.) and details (e.g. core diameter, triple or standard tube, depth of diamond tails, face-sampling bit or other type, whether core is oriented and if so, by what method, etc.). 	<p>Tesoro has completed 300 diamond drill holes for 100,235m. Diamond drill holes were drilled with HQ. Sampling was half core at geological and significant mineralisation boundaries. Standard tube was used.</p>
Drill sample recovery	<ul style="list-style-type: none"> Method of recording and assessing core and chip sample recoveries and results assessed. 	<p>Core recovery was estimated using the drillers recorded depth marks against the length of the core recovered. Reviewing the core photos, there are occasional shears/faults where core is broken. There is however no significant core loss.</p>
	<ul style="list-style-type: none"> Measures taken to maximise sample recovery and ensure representative nature of the samples. 	<p>A single tube system was employed and in general core recovery good.</p>
	<ul style="list-style-type: none"> Whether a relationship exists between sample recovery and grade and whether sample bias may have occurred due to preferential loss/gain of fine/coarse material. 	<p>There appears to be no potential sample bias as there was no regular loss of core.</p>
Logging	<ul style="list-style-type: none"> Whether core and chip samples have been geologically and geotechnically logged to a level of detail to support appropriate Mineral Resource estimation, mining studies and metallurgical studies. 	<p>Geological core logging to a resolution of 25 cm was undertaken with a record kept of, inter alia, colour, lithology, weathering, grain size, mineralisation, alteration, geotechnical characteristics etc. Diamond core is stored at the Company's warehouse.</p> <p>Tesoro consider the data to be of an appropriate level of detail to support a future resource estimation.</p>
	<ul style="list-style-type: none"> Whether logging is qualitative or quantitative in nature. Core (or costean, channel, etc.) photography. 	<p>Logging of diamond core was qualitative and diamond core was photographed.</p>
	<ul style="list-style-type: none"> The total length and percentage of the relevant intersections logged. 	<p>All drilled intervals are logged and recorded.</p>
Subsampling techniques and sample preparation	<ul style="list-style-type: none"> If core, whether cut or sawn and whether quarter, half or all core taken. 	<p>Drill core was cut, and half core was collected for analysis</p>
	<ul style="list-style-type: none"> If non-core, whether riffled, tube sampled, rotary split, etc. and whether sampled wet or dry. 	<p>Tesoro has not completed any percussion drilling.</p>
	<ul style="list-style-type: none"> For all sample types, the nature, quality and appropriateness of the sample preparation technique. 	<p>Collection of half core ensured the nature, quality and appropriateness of the collected sample.</p> <p>The sample preparation of crushing half core at the lab to mm size prior to splitting off a 50g charge (either by cone/quarter</p>

Criteria	JORC Code explanation	Commentary
		or riffle) for pulverisation provides an appropriate and representative sample for analysis.
	<ul style="list-style-type: none"> Quality control procedures adopted for all subsampling stages to maximise representivity of samples. 	Half core was collected for the entirety of the Tesoro drilling, as such there was consistency throughout the drilling. Core was logged by a qualified geoscientist. Each subsample is considered to be representative of the interval.
	<ul style="list-style-type: none"> Measures taken to ensure that the sampling is representative of the in-situ material collected, including for instance results for field duplicate/second-half sampling. 	Sampling of half core is representative of the in-situ material. There are field duplicate samples collected from the diamond core with irregular results. Field drill core duplicates are irregular by nature and it has been recommended by Tesoro's consultants to use coarse reject material to monitor the sample preparation.
	<ul style="list-style-type: none"> Whether sample sizes are appropriate to the grain size of the material being sampled. 	sample sizes collected were considered appropriate to reasonably represent the material being tested.
Quality of assay data and laboratory tests	<ul style="list-style-type: none"> The nature, quality and appropriateness of the assaying and laboratory procedures used and whether the technique is considered partial or total. 	Assays reported in this report were undertaken at the accredited laboratory of ALS Santiago, which is fully certified. Core samples of various lengths were assayed (minimum 0.25m) from which 1kg of material was pulverized passing 200 mesh to produce a 50 g charge for fire assay fusion with gravimetric finish. Multielement assays were completed by 4-acid digest with a 2.5 g charge. All techniques are appropriate for the element being determined.
	<ul style="list-style-type: none"> For geophysical tools, spectrometers, handheld XRF instruments, etc., the parameters used in determining the analysis including instrument make and model, reading times, calibrations factors applied and their derivation, etc. 	Standard chemical analyses were used for grade determination. There was no reliance on determination of analysis by geophysical tools.
	<ul style="list-style-type: none"> Nature of quality control procedures adopted (e.g. standards, blanks, duplicates, external laboratory checks) and whether acceptable levels of accuracy (i.e. lack of bias) and precision have been established. 	QAQC procedures included the insertion of Certified Reference Materials (CRMs) (5%) and blank material (2%), Check samples (5%) and check assaying 5% Cube Consulting Pty Ltd manage the database for Tesoro. The laboratories used have generally demonstrated analytical accuracy at an acceptable level within 95% confidence limits.
Verification of sampling and assaying	<ul style="list-style-type: none"> The verification of significant intersections by either independent or alternative company personnel. 	A number of independent consulting geoscientists (Cube Consulting, Oliver, and Cooley) external to Tesoro have verified the intersections for holes ZDDH0001 to ZDDH0080. Holes ZDDH0081 onwards have been verified by multiple appropriately qualified Company personnel.
	<ul style="list-style-type: none"> The use of twinned holes. 	no twinned holes have been completed
	<ul style="list-style-type: none"> Documentation of primary data, data entry procedures, data verification, data storage (physical and electronic) protocols. 	Tesoro drilling is digitally entered and stored following documented core handling protocols. The protocols are considered adequate.
	<ul style="list-style-type: none"> Discuss any adjustment to assay data. 	No adjustments were made to Tesoro Drilling
Location of data points	<ul style="list-style-type: none"> Accuracy and quality of surveys used to locate drillholes (collar and downhole surveys), trenches, mine workings and other locations used in Mineral Resource estimation. 	Tesoro drill hole collars have been surveyed accurately using differential GPS for holes ZDDH0001 to ZDDH00080. Holes ZDDH0081 onwards have been surveyed using handheld GPS and will be surveyed using differential GPS once the drill program has concluded.
	<ul style="list-style-type: none"> Specification of the grid system used. 	The grid system used PSAD56 19S
	<ul style="list-style-type: none"> Quality and adequacy of topographic control. 	The topography generated from an accurate topographic survey data completed by a registered surveyor and has been used for the current control.
Data spacing and distribution	<ul style="list-style-type: none"> Data spacing for reporting of Exploration Results. 	Drill hole spacing is variable between 25m and 200m
	<ul style="list-style-type: none"> Whether the data spacing and distribution is sufficient to establish the degree of geological and grade continuity appropriate for the Mineral Resource and Ore Reserve estimation procedure(s) and classifications applied. 	The spacing of drill holes is variable and satisfactory for reconnaissance level drilling. The holes are not intended to be used for resource estimates at this stage of exploration.
	<ul style="list-style-type: none"> Whether sample compositing has been applied. 	Sample composites was not employed.
Orientation of data in relation to geological structure	<ul style="list-style-type: none"> Whether the orientation of sampling achieves unbiased sampling of possible structures and the extent to which this is known, considering the deposit type. 	Drill holes were drilled across the interpreted strike of the mineralization
	<ul style="list-style-type: none"> If the relationship between the drilling orientation and the orientation of key 	Tesoro diamond drilling at various orientations does not reveal any bias regarding the orientation of the mineralised horizons.

Criteria	JORC Code explanation	Commentary
	<i>mineralised structures is considered to have introduced a sampling bias, this should be assessed and reported if material.</i>	
Sample security	<ul style="list-style-type: none"> The measures taken to ensure sample security. 	Chain of Custody of digital data is managed by the Company. Physical material was stored on site and, when necessary, delivered to the assay laboratory. Thereafter laboratory samples were controlled by the nominated laboratory which to date has been Bureau Veritas and ALS Santiago. All sample collection was controlled by digital sample control file(s) and hardcopy ticket books.
Audits or reviews	<ul style="list-style-type: none"> The results of any audits or reviews of sampling techniques and data. 	No audits have been undertaken.

(Criteria in this section apply to all succeeding sections)

Section 2: Reporting of Exploration Results

(Criteria listed in the preceding section also apply to this section)

Criteria	JORC Code explanation	Commentary
Mineral tenement and land tenure status	<ul style="list-style-type: none"> Type, reference name/number, location and ownership including agreements or material issues with third parties such as joint ventures, partnerships, overriding royalties, native title interests, historical sites, wilderness or national park and environmental settings. 	Information regarding tenure is included in the company's December 2020 half yearly report released to the ASX on 12 March 2021 Tesoro Resources Ltd, 95% owned Chilean subsidiary, Tesoro Mining Chile SpA, owns 85% of the El Zorro Gold Project Concessions.
	<ul style="list-style-type: none"> The security of the tenure held at the time of reporting along with any known impediments to obtaining a licence to operate in the area. 	The Concession is believed to be in good standing with the governing authority and there is no known impediment to operating in the area.
Exploration done by other parties	<ul style="list-style-type: none"> Acknowledgment and appraisal of exploration by other parties. 	Little historical exploration has been undertaken in either project area. Coeur d'Alene's Chilean exploration division undertook activities on the Ternera prospect, under an option agreement with the previous owners between April 1990 and January 1993.
Geology	<ul style="list-style-type: none"> Deposit type, geological setting and style of mineralisation. 	The mineralisation model is to likely to be intrusive related gold deposit. The key characteristics that are consistent with this style deposit include: <ul style="list-style-type: none"> Low sulphide content, (typically <5%); reduced ore mineral assemblage that typically comprises pyrite and lacks primary magnetite or hematite Mineralisation occurs as sheeted vein deposits or stockwork assemblages and often combine gold with variably elevated Bi, W, As, Mo, Te, and/or Sb but low concentrations of base metals as seen in the initial four holes by Tesoro at El Zorro Restricted and commonly weak proximal hydrothermal alteration Intrusions of intermediate to felsic composition.
Drillhole information	<ul style="list-style-type: none"> A summary of all information material to the understanding of the exploration results including a tabulation of the following information for all Material drillholes: <ul style="list-style-type: none"> easting and northing of the drillhole collar elevation or RL (Reduced Level – elevation above sea level in metres) of the drillhole collar dip and azimuth of the hole downhole length and interception depth hole length. If the exclusion of this information is justified on the basis that the information is not Material and this exclusion does not detract from the understanding of the report, the Competent Person should clearly explain why this is the case. 	Information relating to current drill program presented in this report.
Data aggregation methods	<ul style="list-style-type: none"> In reporting Exploration Results, weighting averaging techniques, maximum and/or minimum grade truncations (e.g. cutting of high grades) and cut-off grades are usually Material and should be stated. 	No cutting of grades has been undertaken at this early stage of exploration drilling. Downhole intercepts are calculated using a length weighted averaging method.

Criteria	JORC Code explanation	Commentary
	<ul style="list-style-type: none"> Where aggregate intercepts incorporate short lengths of high grade results and longer lengths of low grade results, the procedure used for such aggregation should be stated and some typical examples of such aggregations should be shown in detail. 	<p>All individual results for holes ZDDH00001 to ZDDH00016 are reported in prospectus dated 30th October 2019 lodged by Plukka Ltd.</p> <p>Down hole length weighted average results are calculated using a 0.20g/t Au cut off and a maximum of 5m internal dilution</p>
	<ul style="list-style-type: none"> The assumptions used for any reporting of metal equivalent values should be clearly stated. 	No metal equivalents are reported.
Relationship between mineralisation widths and intercept lengths	<ul style="list-style-type: none"> These relationships are particularly important in the reporting of Exploration Results. 	
	<ul style="list-style-type: none"> If the geometry of the mineralisation with respect to the drillhole angle is known, its nature should be reported. 	The mineralisation forms sub-vertical sheeted veins and individual veins and may form plunging zones within the mineralised structures. Drilling by Tesoro has been undertaken to test these orientations.
	<ul style="list-style-type: none"> If it is not known and only the downhole lengths are reported, there should be a clear statement to this effect (e.g. 'downhole length, true width not known'). 	Exploration results are reported as downhole widths as the true width is not known with any certainty.
Diagrams	<ul style="list-style-type: none"> Appropriate maps and sections (with scales) and tabulations of intercepts should be included for any significant discovery being reported. These should include, but not be limited to a plan view of drillhole collar locations and appropriate sectional views. 	Relevant maps and diagrams are included in the body of the report.
Balanced reporting	<ul style="list-style-type: none"> Where comprehensive reporting of all Exploration Results is not practicable, representative reporting of both low and high grades and/or widths should be practiced to avoid misleading reporting of Exploration Results. 	All assay results from drilling are reported. Reporting of visible gold occurrences in drill core is by visual inspection only and final gold content is not known until assay results have been received.
Other substantive exploration data	<ul style="list-style-type: none"> Other exploration data, if meaningful and material, should be reported including (but not limited to): geological observations; geophysical survey results; geochemical survey results; bulk samples – size and method of treatment; metallurgical test results; bulk density, groundwater, geotechnical and rock characteristics; potential deleterious or contaminating substances. 	All material exploration data is reported in the body of the report.
Further work	<ul style="list-style-type: none"> The nature and scale of planned further work (e.g. tests for lateral extensions or depth extensions or large-scale step-out drilling). 	Further work will be focused on drill testing the Ternera mineralisation and additional prospects as defined in the work program. Core will be used for metallurgical testwork and resource modelling is planned.
	<ul style="list-style-type: none"> Diagrams clearly highlighting the areas of possible extensions, including the main geological interpretations and future drilling areas, provided this information is not commercially sensitive. 	Diagrams have been included in the body of this report.