



NORFOLK
METALS LTD.

ASX:NFL

**SOUTH AUSTRALIAN URANIUM
& TASMANIAN GOLD
EXPLORATION COMPANY**



DISCLAIMER



This presentation has been prepared by Norfolk Metals Limited (**Norfolk** or the **Company**). The information contained in the presentation is summary only and should be read in conjunction with any other documents provided to you by the Company, including the prospectus lodged by the Company on 21 January 2022 and the supplementary prospectus dated 28th February 2022. The information is current as at 23rd March 2022 and the Company does not undertake to provide any additional or update information, whether as a result of new information, future events or results or otherwise. By receiving this presentation, you acknowledge and represent to the Company that you have read, understood and accepted the terms of this disclaimer.

In accordance with section 734(6) of the Corporations Act 2001 (Cth), the Company notes:

- the Company has lodged a prospectus prepared under the Corporations Act in relation to a public offer and certain secondary offers with ASIC on 21 January 2021 (**Prospectus**), which is available at <https://norfolkmetals.com.au/>;
- the Company will be the issuer of securities referred to in this presentation pursuant to the Prospectus;
- the offers of the securities under the Prospectus will be made in, or accompanied by, a copy of the Prospectus;
- a person should consider the Prospectus in deciding whether to acquire the securities in the Company; and
- anyone wishing to acquire the securities under the Offer or any other offer made pursuant to the Prospectus will need to complete the relevant application form that will be in or will accompany the Prospectus.

Some of the statements appearing in this presentation may be in the nature of forward looking statements. You should be aware that such statements are only predictions and are subject to inherent risks and uncertainties. Those risks and uncertainties include factors and risks specific to the industries in which Norfolk operates and proposes to operate as well as general economic conditions, prevailing exchange rates and interest rates and conditions in the financial markets, among other things. Actual events or results may differ materially from the events or results expressed or implied in any forward looking statement. No forward looking statement is a guarantee or representation as to future performance or any other future matters, which will be influenced by a number of factors and subject to various uncertainties and contingencies, many of which will be outside Norfolk's control.

Norfolk does not undertake any obligation to update publicly or release any revisions to these forward looking statements to reflect events or circumstances after today's date or to reflect the occurrence of unanticipated events. No representation or warranty, express or implied, is made as to the fairness, accuracy, completeness or correctness of the information, opinions or conclusions contained in this announcement. To the maximum extent permitted by law, none of Norfolk, its Directors, employees, advisors or agents, nor any other person, accepts any liability for any loss arising from the use of the information contained in this presentation. You are cautioned not to place undue reliance on any forward looking statement. The forward looking statements in this presentation reflect views held only as at the date of this presentation.

This presentation is not an offer, invitation or recommendation to subscribe for, or purchase securities by Norfolk. Nor does this presentation constitute investment or financial product advice (nor tax, accounting or legal advice) and is not intended to be used for the basis of making an investment decision. Investors should obtain their own advice before making any investment decision. By reviewing or retaining this presentation, you acknowledge and represent that you have read, understood and accepted the terms of this important notice.

Competent Persons Statement

The information in this presentation which relates to exploration results is based on information compiled by Mr Beau Nicholls. Mr Nicholls has sufficient experience which is relevant to the style of mineralisation and type of deposit under consideration and to the activity which he is undertaking to qualify as a Competent Person as defined in the 2012 edition of the 'Australasian Code for Reporting of Exploration Results, Mineral Resources and Ore Reserves' (the JORC Code). Mr Nicholls is a member of the Australian Institute of Geosciences, a recognised professional organisation for the purposes of the JORC Code. Mr Nicholls is the principal consultant of Sahara Natural Resources. Mr Nicholls consents to the inclusion of the information in this presentation in the form and context in which it appears.

ABOUT

- ▶ **SOUTH AUS (URANIUM);** Black Lake Pty Ltd holds one granted exploration licence comprising the Orroroo Uranium Project
- ▶ **TASMANIA (GOLD);** Roger River Resources Pty Ltd holds one granted license and one application license forming the Roger River Gold Project
- ▶ NFL intends to drill both the Roger River and Orroroo projects within 12 months of admission to the ASX Official List
- ▶ NFL is conscious in committing to sound Environmental, Social & Governance (ESG) practices



Roger River Project - Diatreme Breccia Exposure in Quarry (80m wide)

 SMALL CAPS

[Norfolk Metals primed for uranium-gold exploration in lead up to ASX listing](#)

STOCKHEAD

[Norfolk Metals is on track to list with drill-ready uranium and gold projects](#)

Market Index

Access 2,000+ ASX Companies in seconds

[Norfolk Metal joins the main board tomorrow: Phase 1 drilling pegged for third quarter](#)

INVESTMENT HIGHLIGHTS

1

Opportunity to explore prospective Australian uranium territory in South Australia

2

Opportunity to discover a new Australian epithermal gold district in Tasmania

3

Uranium and gold prospects with drill ready targets

4

Board with proven skill set to conduct proposed work programs

5

Circa \$1,100,000 Enterprise Value at ASX listing

6

Board to consider acquisition opportunities as presented

7

Committed to ESG conscious exploration activities

INDICATIVE TIME TABLE

	2022												
	Q1			Q2			Q3			Q4			
Roger River Access Engagement	✓			✓									
ASX Listing				✓									
Roger River EL20/2020 Gravity Survey Results													
Roger River EL20/2020 Aeromagnetic Flight													
Roger River EL20/2020 MRT Drilling Grant Application Lodged													
Roger River EL20/2020 Aeromagnetic Results													
Roger River EL20/2020 Targets Defined													
Roger River EL20/2020 ESG Commitments Made													
Roger River EL20/2020 Drilling								Phase 1 Drilling				Phase 2 Drilling (TBA)	
Roger River EL17/2021 Granted													
Roger River EL17/2021 Initial Exploration													
Orroroo EL6552 Access Engagement													
Orroroo EL6552 Drilling								Phase 1 Drilling				Phase 2 Drilling (TBA)	

Ben Phillips

Executive Chair

Mr Phillips has over 15 years' experience in commercial negotiations with a broad spectrum of industries including Oil and Gas, Resources, Medical technology, SaaS and Defence.

Mr Phillips previously held a Non-Executive Director position at Bronson Group BGR:ASX and subsequently Mandrake Resources MAN:ASX.

Position as a Corporate Executive at Ironside Capital Mr Phillips is focused on sourcing, structuring, funding and management requirements for small-cap companies both private and public.

Leo Pilapil

Non-Executive, Technical Director

Mr Pilapil has over 30 years' experience as a Geoscientist and three years as a Financial Planner.

As a geoscientist, he has held director positions for several junior companies in Australia, Africa and Turkey, mainly responsible for technical project evaluations, project acquisitions, project management and business development.

Responsible for the discovery of the Harlequin Gold Deposit (1Moz) under salt lake conditions in Norseman WA Australia and has also been responsible for the mine extensions and discoveries of several ore deposits in Australia, Africa, Turkey and more recently in Lao PDR.

Mr Pilapil has established drilling companies in Turkey and Lao PDR servicing several major exploration and mining companies to complement the acquisition of his own personal projects.

Patrick Holywell

Independent, Non-Executive Director

Mr Holywell has over 15 years of experience in accounting, finance and corporate governance, including employment at Deloitte and Patersons (now Canaccord Genuity).

Mr Holywell is a Chartered Accountant and a Fellow of the Governance Institute of Australia with the last ten years focused on Director and Company Secretarial roles in the resources and technology space.

Mr Holywell's most recent involvements include roles with De Grey Mining Limited, Si6 Metals Limited and Pentanet Limited.

Mr Holywell has completed a Bachelor of Commerce at UWA, a Graduate Diploma of Chartered Accounting with the Institute of Chartered Accountants and the Company Directors Course with the Australian Institute of Company Directors.

FRAMEWORK

- ▶ Established ESG framework
- ▶ Conscious in committing to sound Environmental, Social & Governance (ESG) practices
- ▶ To announce any material ESG targets in relation to exploration activities

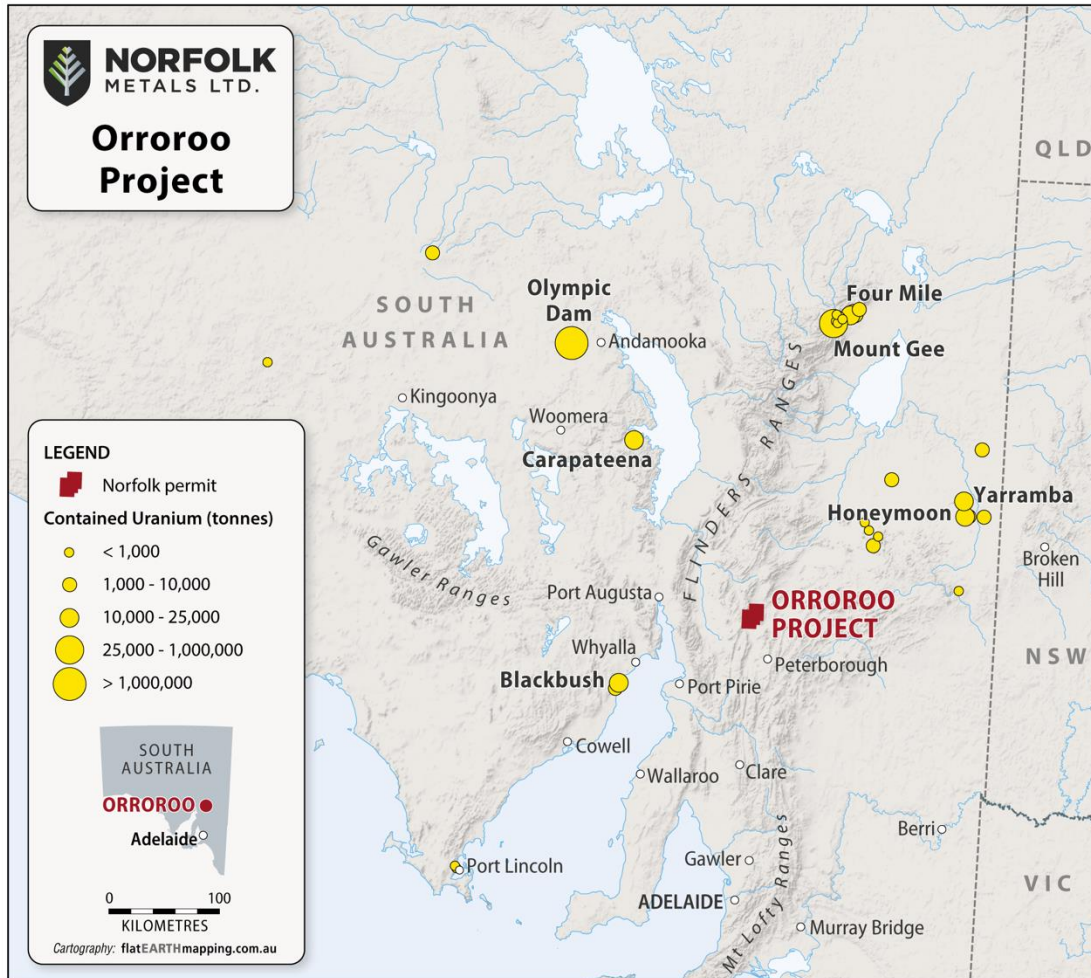
REPORTING STANDARDS

- ▶ Sustainable Development Goals (SDGs)
- ▶ Global Reporting Initiative (GRI)
- ▶ Taskforce on Climate related Financial Disclosures (TCFD)



Sign at General Store in Edith Creek (Source: Leached Cap Pty Ltd 2014)

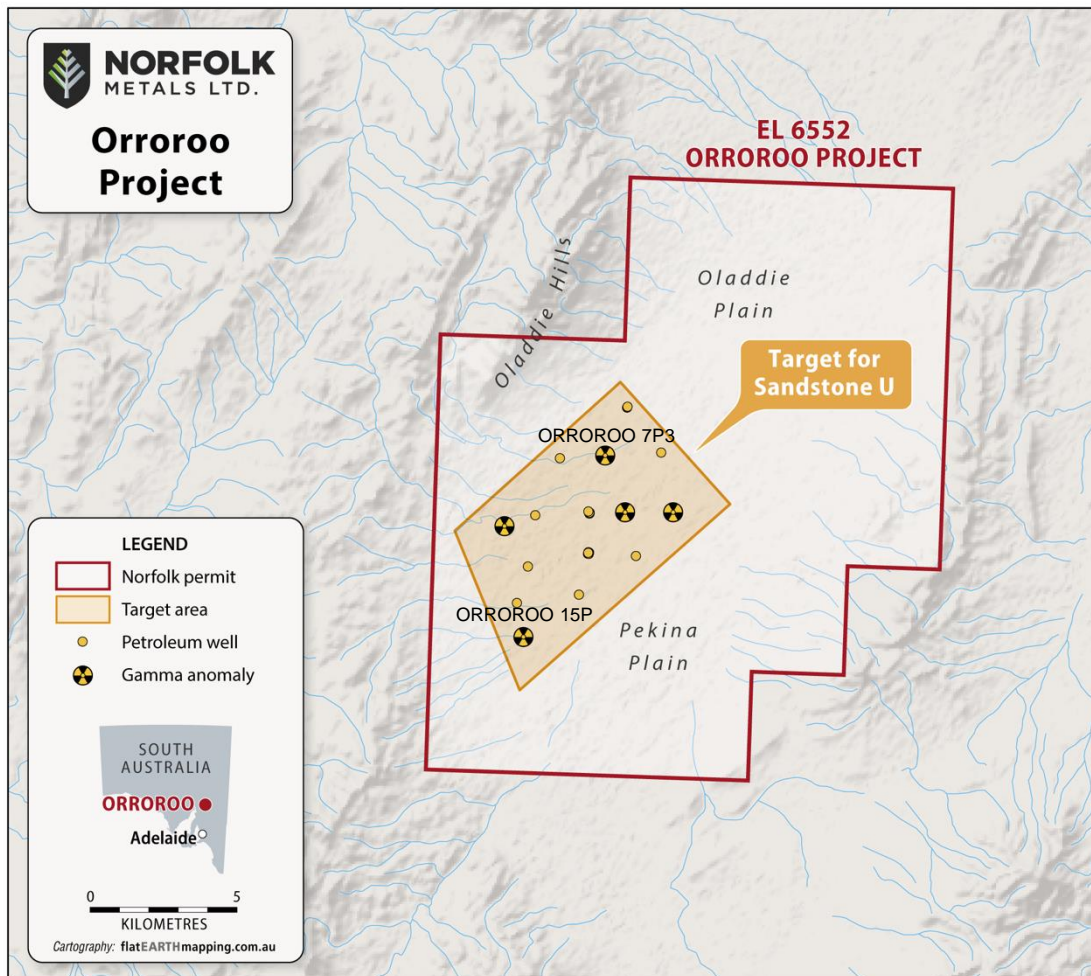
ORROROO PROJECT



- ▶ Located 274km Northwest of Adelaide
- ▶ Accessed via sealed road
- ▶ Orroroo area situated over the Walloway Basin
- ▶ Early-stage exploration project that is prospective for “roll front uranium”
- ▶ Model based on hydrocarbons being a chemical trap for Uranium and historical on downhole gamma readings over 5km by 3km area

ORROROO PROJECT

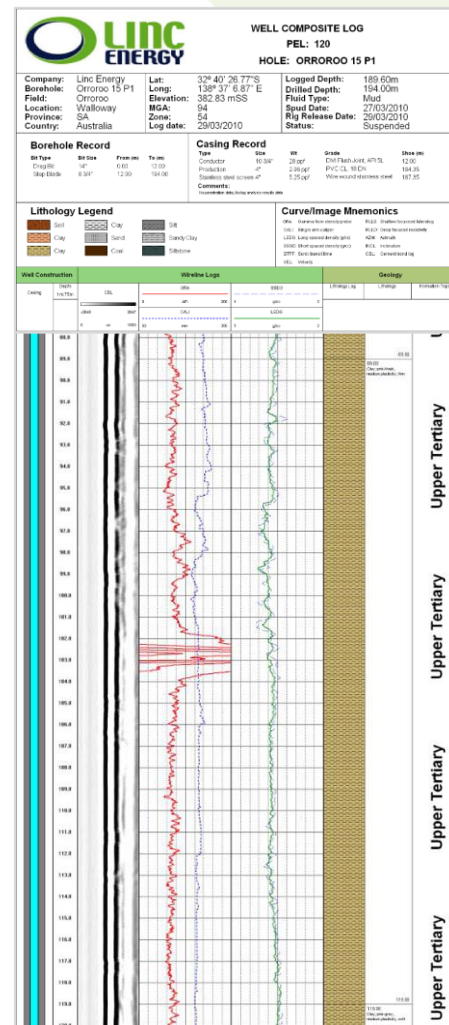
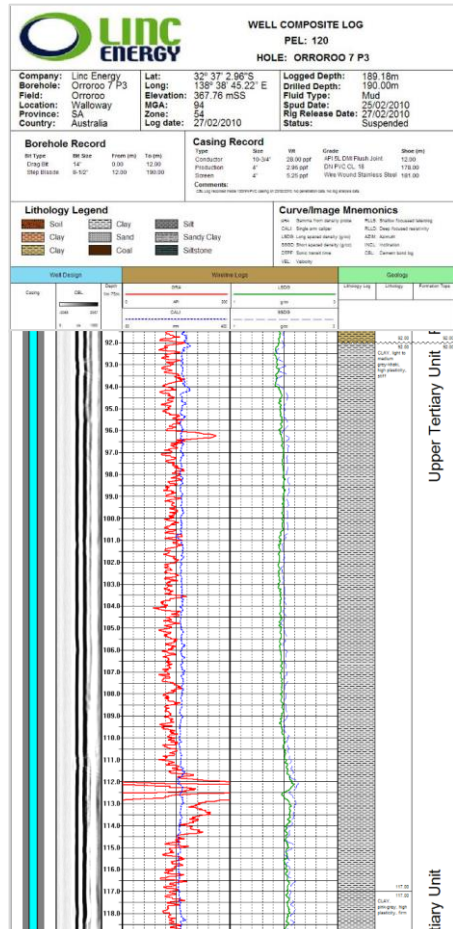
EL6552



- ▶ Granted title over 280sqkm August 2021
- ▶ Expenditure commitment \$110,000 over 2 years
- ▶ Historical exploration within the Walloway basin has been limited to its hydrocarbon potential
- ▶ Boreholes (32) drilled by Linc Energy in 2010
- ▶ Downhole electric wireline logs included gamma ray from end of hole to surface
- ▶ Paleochannel (palaeoriver) hosted uranium roll fronts amenable to low cost in-situ recovery methods

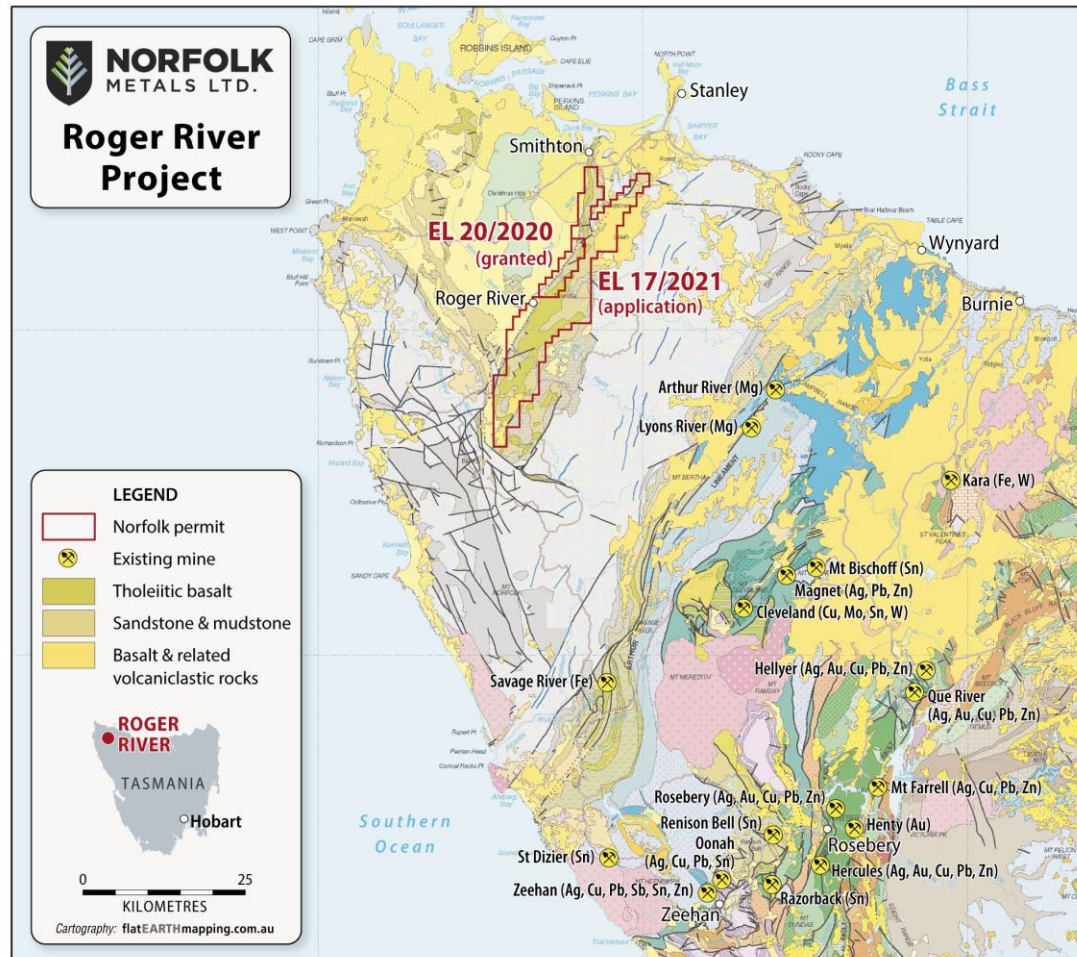
ORROROO PROJECT

EL6552



- ▶ The highest single gamma anomalies are in wells ORROROO 15P (>900API) and ORROROO 7P3 (>500API)
- ▶ Gamma anomalies at depths of 100-140m
- ▶ Orroroo (Walloway) hydrocarbon basin is similar to Kazakhstan and Niger which are host to world-class sandstone hosted uranium deposits
- ▶ Follow up roadside program/drilling will;
 - Map channel stratigraphy
 - Define redox boundaries (host to uranium)
 - Resolve source of radiogenic anomalies

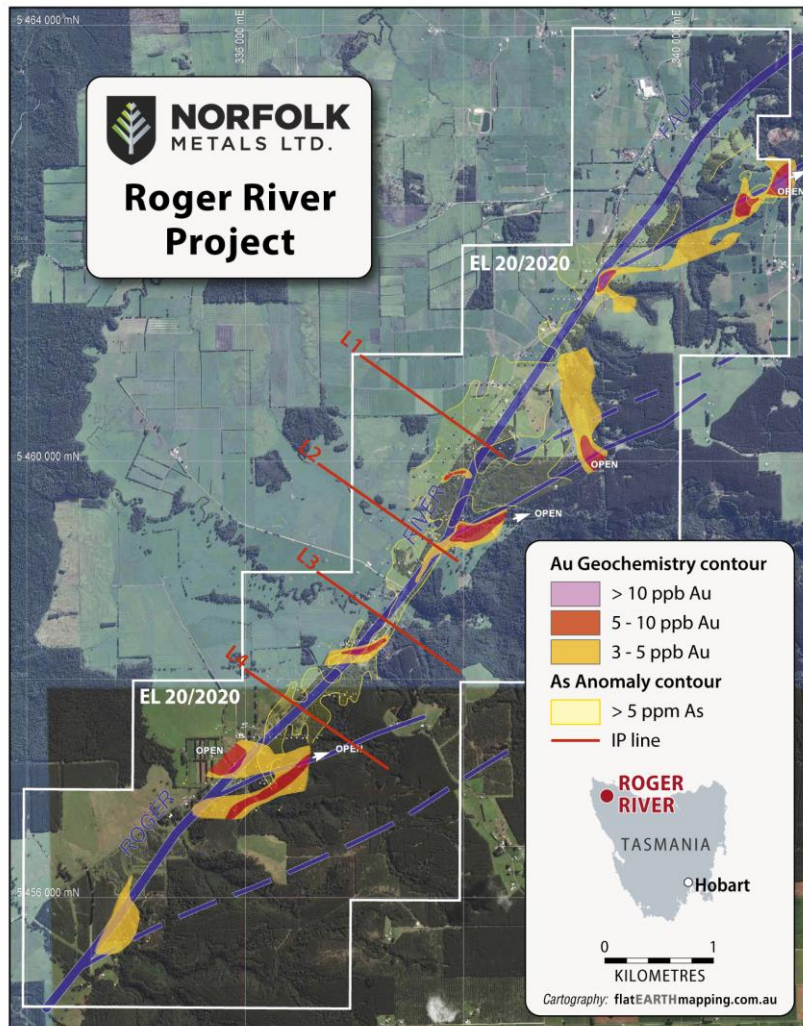
ROGER RIVER PROJECT



- ▶ EL20/2020 granted and EL17/2021 in application
- ▶ Located in Northwest Tasmania approx. 410km from Hobart
- ▶ Accessed via sealed road
- ▶ EL20/2020 had substantial value added via historical work conducted by Leached Cap Pty Ltd in 2013-2018
- ▶ Potential new epithermal gold district to be discovered along Roger River Fault (RRF)
- ▶ Epithermal gold deposits have been discovered internationally with often very little surface mineralisation. Examples of hidden deposits are Siana Mine in Philippines and Jerrit Canon in USA

ROGER RIVER PROJECT

EL20/2020

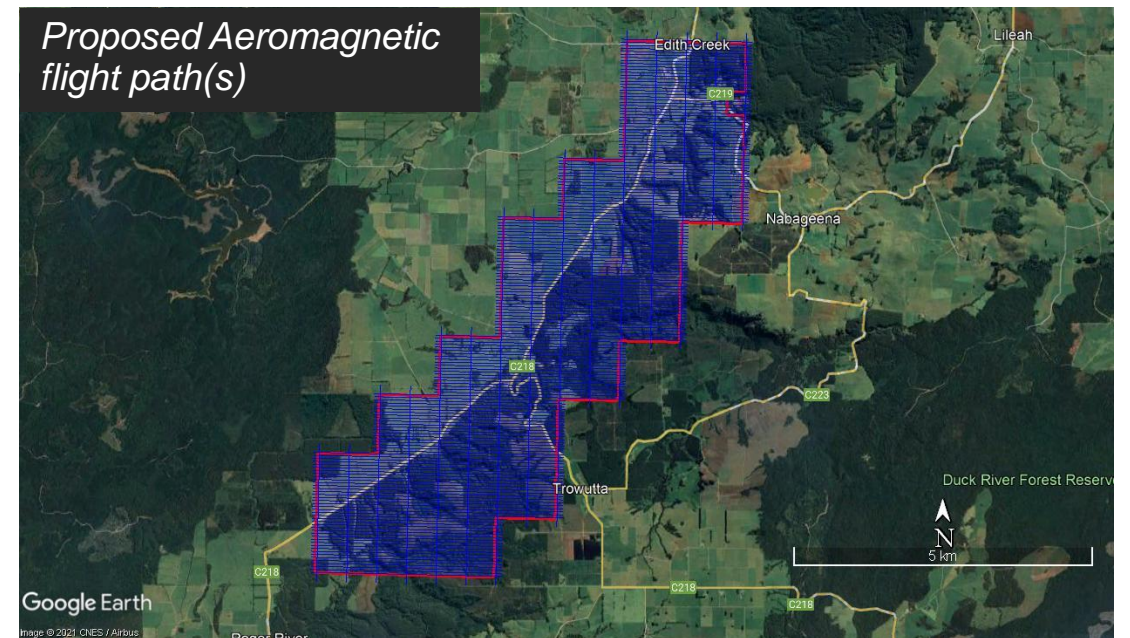
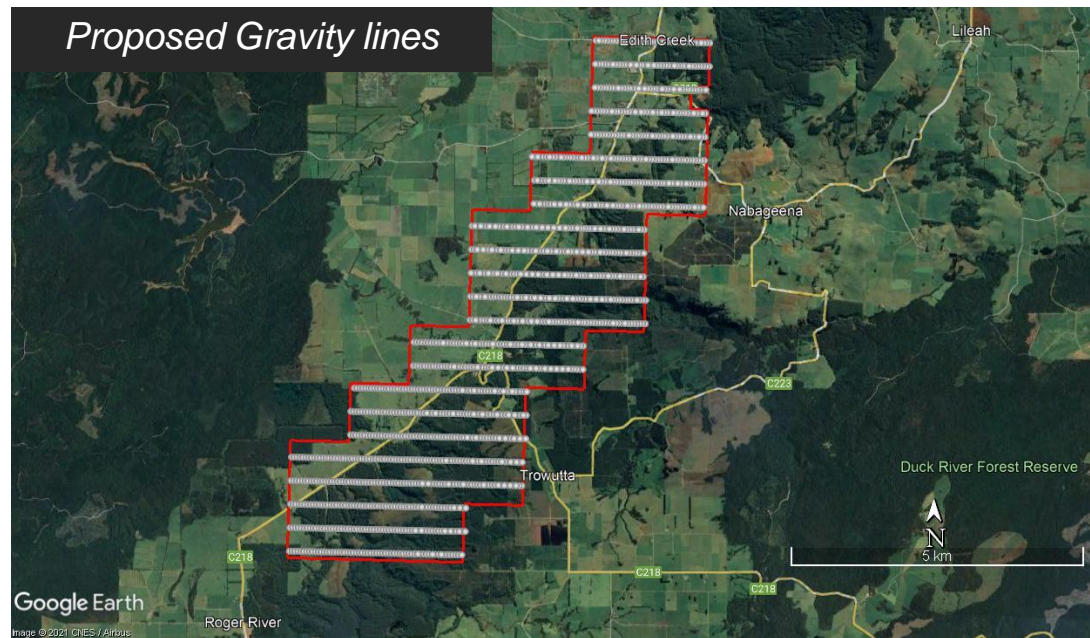


- ▶ Granted title August 2021
- ▶ Expenditure commitment of \$550,000 over 2 years
- ▶ 26sqkm over prospective RRF
- ▶ Previous work includes
 - Geological mapping
 - Reinterpretation of regional magnetics
 - 4 Induced Polarisation (IP) lines
 - 3 shallow reconnaissance drill holes determining fault orientation
 - Grid based C-horizon soil sampling

Note: IP lines outside of EL20/2020 boundary as IP work conducted by Leached Cap Pty Ltd in 2014 for EL19/2012

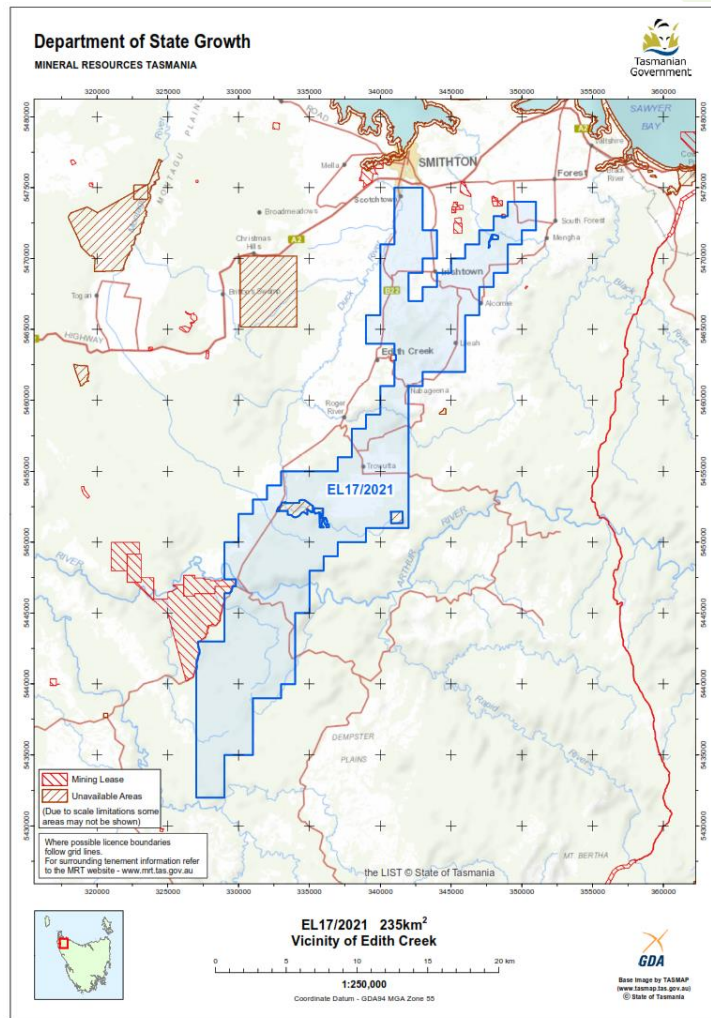
PLANNED WORK FOR Q2/Q3 2022

- ▶ Atlas Geophysics to complete Gravity and UAV magnetic surveys
- ▶ Identify targets and gain all required approvals
- ▶ Launch Phase 1 Drilling program (Diamond Drilling)



ROGER RIVER PROJECT

EL17/2021



- ▶ Under application with Mineral Resources Tasmania (MRT)
- ▶ 235km² over known belt
- ▶ Expenditure commitment \$750,000 over 2 years
- ▶ Expected granting Q2 2022
- ▶ Initial exploration Q3 2022

THANK YOU



Contact:

Norfolk Metals Ltd.

Suite 1, 295 Rokeby Road
Subiaco WA 6008

T: + 61 8 6555 2950

F: +61 8 6166 0261

E: info@norfolkmetals.com.au

www.norfolkmetals.com.au

IPO Lead Manager

JP Equity Partners

Nic Brownbill

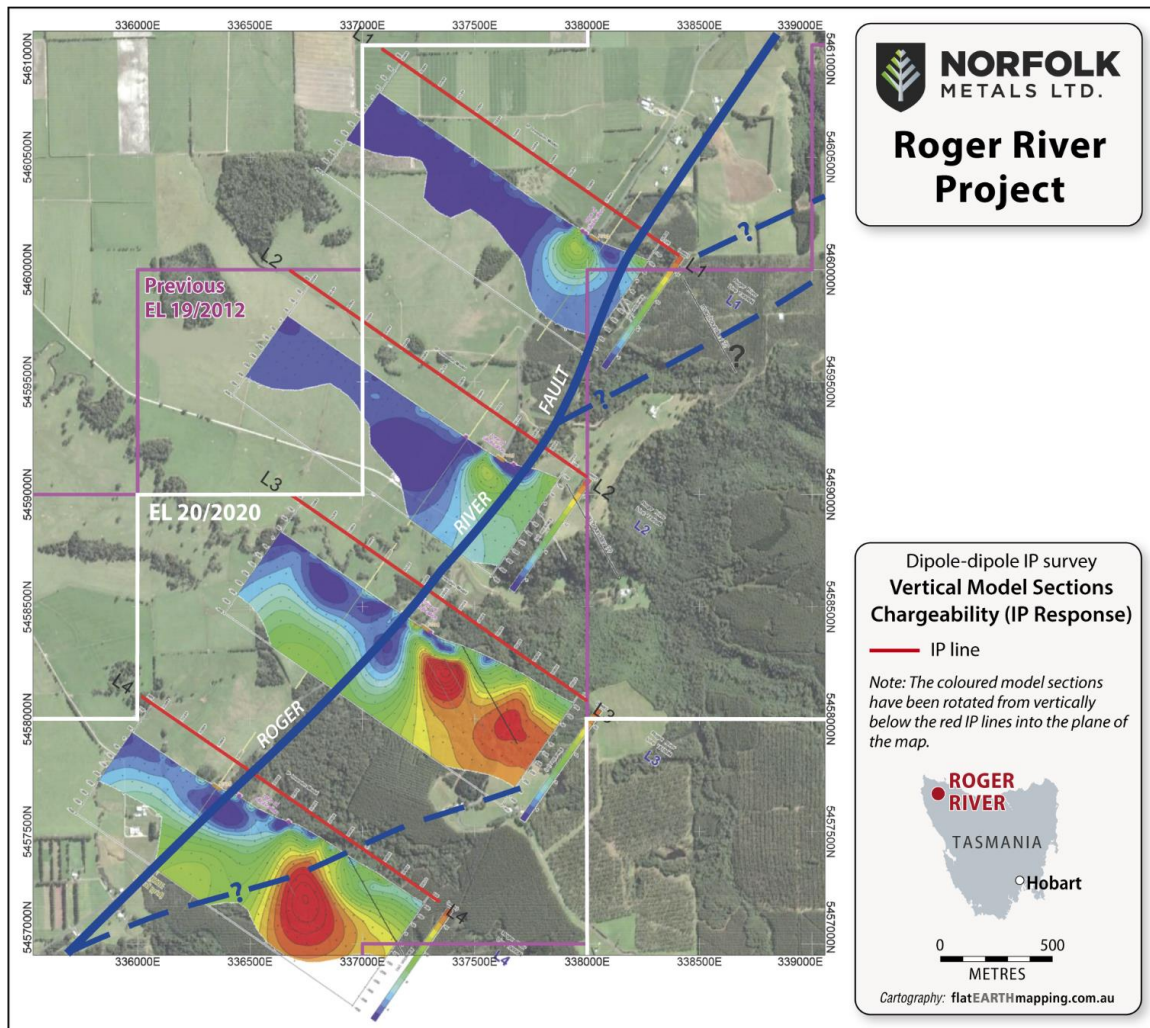
Director

T: +61 417 914 659

E: nbrownbill@jpequity.com.au

APPENDIX

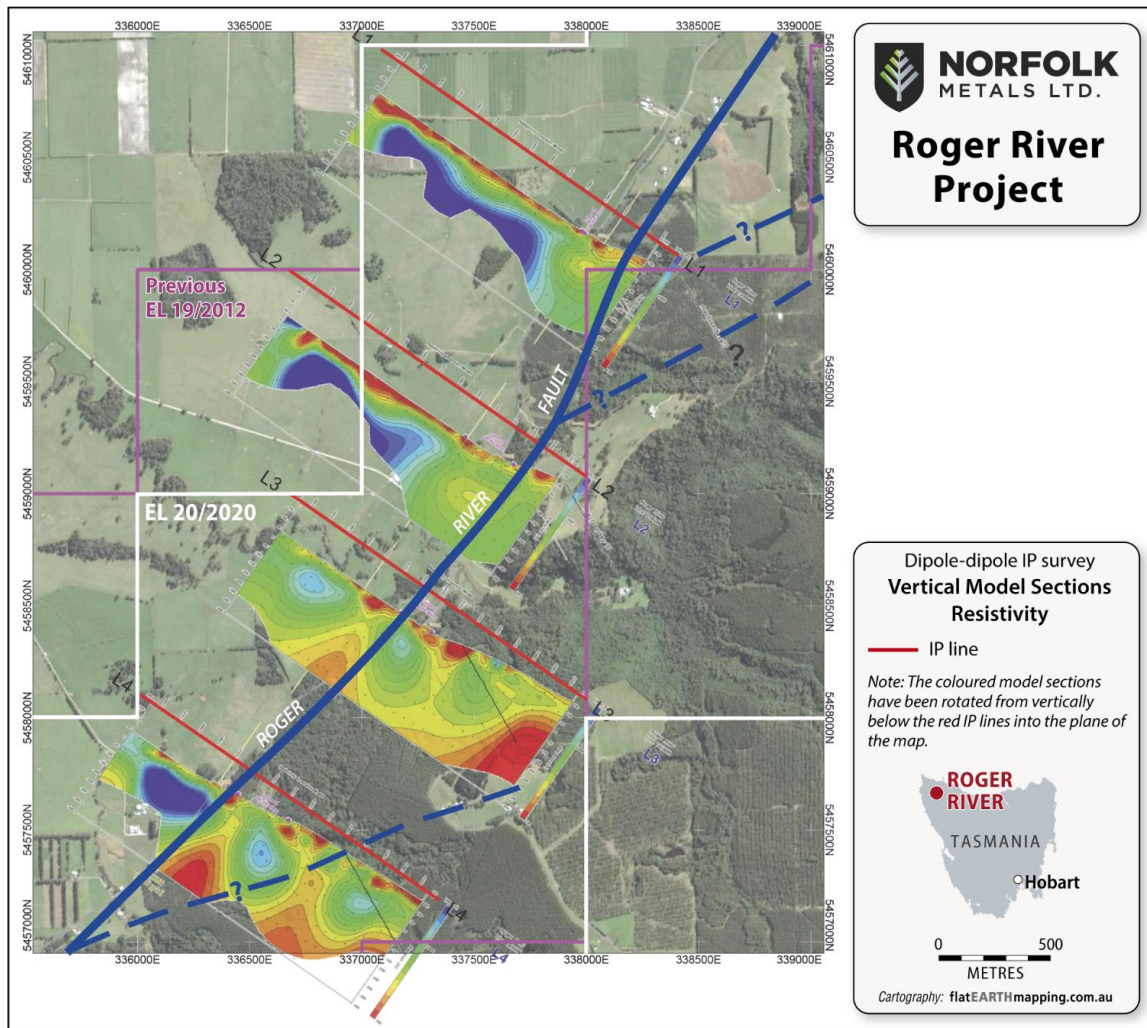
ROGER RIVER PROJECT EL20/2020



- ▶ IP Lines position relative to previous tenement boundary
- ▶ Confirms the relative position of the major Roger River Fault Zone
- ▶ Chargeability zones towards the east of Lines 3 & 4 appear to correlate with the interpreted fault splays from the main RRF structure
- ▶ Chargeability anomalies may relate to sulphide mineralisation
- ▶ Lines 1 & 2 did not test the splays to the east

APPENDIX

ROGER RIVER PROJECT EL20/2020



- ▶ IP Lines position relative to previous tenement boundary
- ▶ Confirms the position of the silica cap mapped on the surface around the vicinity of the Roger River Fault zone
- ▶ Low resistive zones towards the east of Lines 3 & 4 appear to also correlate with the interpreted fault splays from the main RRF structure
- ▶ Low resistive zone (more conductive) positions complement the chargeability anomalies that may be associated with sulphide mineralisation

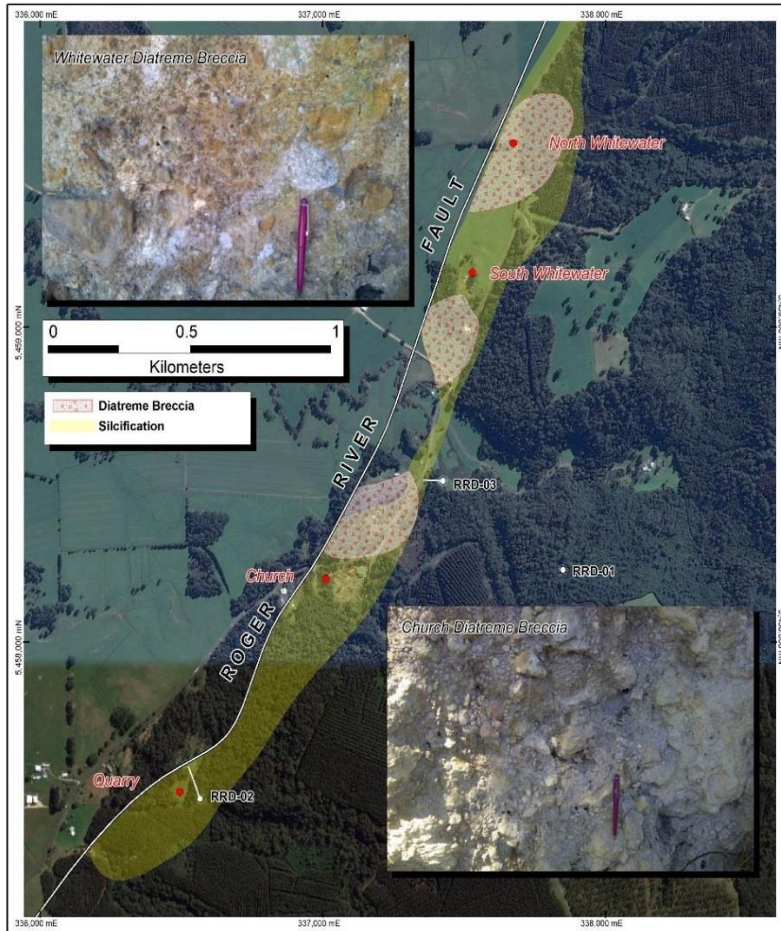


Photo and Map Source: Leached Cap Pty Ltd

Roger River – Features and locations

- ▶ Regional scale
- ▶ Crustal, reverse Roger River Fault (RRF)
- ▶ +3km long siliceous zone with 3 diatremes
- ▶ Ideal calcareous host rocks
- ▶ Extensive fault controlled Au and As soil anomalies



Photo Source: Leached Cap Pty Ltd

DIATREME – North Whitewater

- ▶ Polyolithic fragments fine-grained matrix
- ▶ Argillic alteration
- ▶ Limonitic fragments anomalous in As to 54ppm



Photo Source: Leached Cap Pty Ltd

DIATREME – North Whitewater

- ▶ Acid leached siliceous material
- ▶ Cut by Grey Jasperoid seams

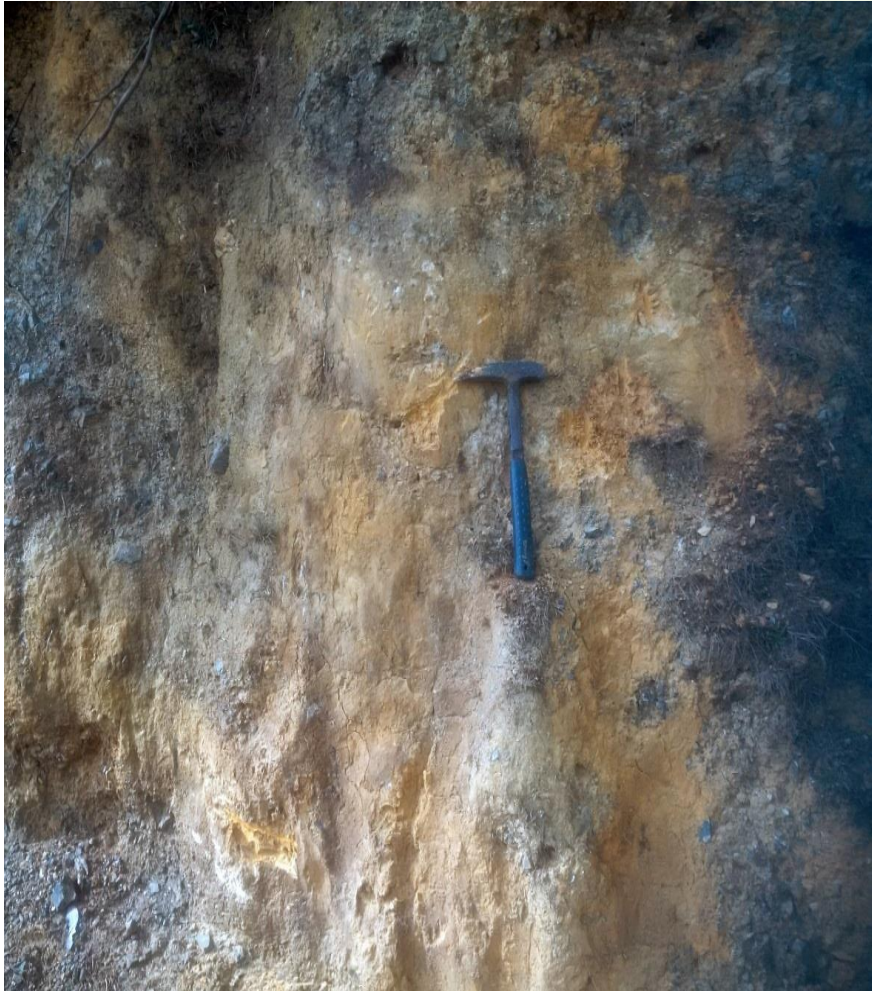


Photo Source: Leached Cap Pty Ltd

DIATREME – South Whitewater

- ▶ Argillised, white- yellowish dolomite boulders within grey brecciated cherty rocks
- ▶ Cut by diagnostic limonite veins to 3ppb Au and 151ppm As
- ▶ Cut by narrow sub- vertical hydrothermal breccias



Photo Source: Leached Cap Pty Ltd

DIATREME – Church

- ▶ Rubbly, silicified dolomite fragments in argillised matrix
- ▶ Also adjacent to large blocks of silicified dolomite in silicified matrix