



AVIRA RESOURCES  
LIMITED

1 April 2022

The Manager

Market Announcements Office

Level 40, Central Park

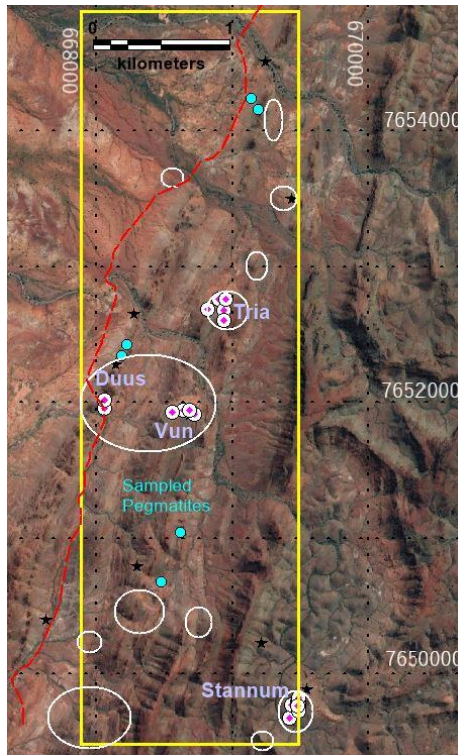
152-158 St Georges Terrace

PERTH WA 6000

## AVW - YULE RIVER LITHIUM PROJECT OPERATIONAL UPDATE AND ADDENDUM

Avira Resources Limited (ASX:AVW) (**Avira** or the **Company**) provides a further update and addendum to the planned reconnaissance field trip to the Yule River Lithium Project ("**Tenement**" or "**Yule River Project**") which was undertaken in early March 2022. This focussed on determining appropriate access, field checking prospective structures with non-magnetic signatures observed in open-source government data and outcrops identified with aerial imagery (Refer ASX release 24 March 2022). Please refer to section 1 and section 2 of the JORC table for further details.

The Yule River Project is situated approximately 120km by road south of Port Hedland, accessed by the Great Northern Hwy, approximately 5km from the Wodgina Lithium Deposit (ALB/MIN: 259.2 Mt @ 1.17% Li<sub>2</sub>O) and ~30km from the Pilgangoora Lithium Deposit (PLS: 223.2Mt @ 1.27% Li<sub>2</sub>O) with numerous Li-Ta-Sn deposits located within a 130km radius with other major projects including the Marble Bar (Li) Deposit and the Tabba Tabba (Ta) Deposit (Refer ASX release 16 February 2022). This region is considered to be a Lithium hotspot with neighbouring significant landholders in the region including ALB (Albemarle), PLS (Pilbara Minerals Ltd), FMG (Fortescue Metals Group Ltd) & ESS (Essential Metals Ltd) (Figure 1). The project area consists of 3-blocks covering an area of 9.5km<sup>2</sup> hosting hosts the same rock types as the Wodgina Lithium Deposit and is along-strike from numerous MINEDEX Li-Ta prospects and occurrences.



**Figure 1. Location of the Yule River Project with previous sampling and prospect locations**

Avira Resources Limited

Suite 9, Level 2, 330 Churchill Avenue Subiaco WA 6008 Australia

T: 61 8 6489 1600 F: 61 8 6489 1601 www.aviraresourcesltd.com.au

ABN: 38 131 715 645



AVIRA RESOURCES  
LIMITED

Prospective zones were checked by accessing the western side of the tenement using 4x4 vehicles; the more rugged areas were targeted using drone reconnaissance, followed by 4x4 and foot-based traverses.

The prospective pegmatites were found to dip moderately to the south-southwest (south dipping pegmatites) and are 5-12m true thickness. Other narrower pegmatites dip steeply and parallel the NNE strike of the basalt host. Both pegmatite orientations show signs of fractionation from a granitic source which is inferred to occur to the west or underneath the project at depth.

Adjacent tenure to the east has been drilled into by the Wodgina tenement holders and targets the tantalite and lepidolite bearing dyke swarms that trend into the Yule River Project.

The thick, parallel, and shallow dipping nature of the south dipping pegmatites makes them an attractive exploration target. Areas without modern rock chip sampling were prioritised to assess if the apparently thick pegmatites were mineralised with LCT suite minerals.



**Figure 2. Thick south dipping pegmatite bodies located within the tenement package.**

Whilst the width and orientation of pegmatite sampled provides a voluminous exploration target, the initial reconnaissance clear drill targets are yet to be defined. It was noted however that the drilling at the Yun Prospect had not drilled the full thickness of the pegmatite unit, leaving scope to define a large exploration target at depth. Reconnaissance traverses of the North-Eastern corner of the tenure also identified thick pegmatite units (Figure 2).

Rock chips contained varying amounts of lithium mica; primarily lepidolite and possible zinnwaldite (Figure 3). At this stage the presence of spodumene in the dykes has not been confirmed. Hand samples of felted textured micas and coarse purple-grey lepidolite have been collected for assay; primarily these assays will provide a vector to mineralisation using trace element and whole rock geochemistry.



AVIRA RESOURCES  
LIMITED



**Figure 3. Muscovite and contrasting Grey Lepidolite up to 15% by volume in Pegmatite Samples**

Once geochemical vectoring and internal phase analysis of the pegmatites is complete, a reassessment of the untested portions of the outcropping and subsurface pegmatites will be made to determine if ground-based Geochem soil sampling and/or drilling is supported.

**-ENDS-**

For, and on behalf of, the Board of the Company, and authorised for release  
David Deloub  
Executive Director  
Avira Resources Limited

Shareholders and other interested parties can speak to Mr Sonu Cheema if they have any queries in relation to this announcement: +618 6489 1600.

#### **About Avira Resources Limited**

Avira Resources (AVW) is an ASX listed mining exploration company. In addition to the Wyloo Project tenement exploration licence applications located in the Ashburton Basin, the Company holds two tenement packages within the Paterson Range province which is host to a number of substantial gold, copper and manganese mines and deposits, including the Telfer gold-copper mine. The Avira projects are situated in the Yeneena basin sedimentary rock formation that hosts both the Nifty and Maroochydore copper deposits and the Woodie Woodie Manganese mine.

#### **Forward looking statements**

This announcement contains forward-looking statements which are identified by words such as 'may', 'could', 'believes', 'estimates', 'targets', 'expects', or 'intends' and other similar words that involve risks and uncertainties. These statements are based on an assessment of present economic and operating conditions, and on a number of assumptions regarding future events and actions that, as at the date of this announcement, are expected to take place. Such forward-looking statements does not guarantee future performance and involve known and unknown risks, uncertainties, assumptions and other important factors, many of which are beyond the control of the Company, the directors and our management. We cannot and do not give any assurance that the results, performance or achievements expressed or implied by the forward-looking statements contained in this prospectus will actually occur and investors are cautioned not to place undue reliance on these forward-looking statements. We have no intention to update or revise forward-looking statements, or to publish prospective financial information in the future, regardless of whether new information, future events or any other factors affect the information contained in this announcement, except where required by law. These forward looking statements are subject to various risk factors that could cause our actual results to differ materially from the results expressed or anticipated in these statements.

Avira Resources Limited

Suite 9, Level 2, 330 Churchill Avenue Subiaco WA 6008 Australia  
T: 61 8 6489 1600 F: 61 8 6489 1601 [www.aviraresourcesltd.com.au](http://www.aviraresourcesltd.com.au)  
ABN: 38 131 715 645



### Cautionary Statement

References in this ASX release to visual data and estimates may be in advance of analytical results. Visual estimates of percentages are based on preliminary visual observations and may not be representative of the entire sample. Laboratory assays are required for representative estimates. Photograph of any rock chips are not material, the provide confirmation that the darker mineral is Lepidolite which is a lithium bearing mica. The lithium content of micas varies, so no grade can be determined by the visual presence of Lepidolite.

### Competent Persons Statement

The information in this announcement that relates to Exploration Results is based on and fairly represents information and supporting documentation prepared by Mr John McDougall. Mr McDougall is a consultant geologist for AVW and a member of the AIG. Mr McDougall has sufficient experience relevant to the styles of mineralisation and types of deposits which are covered in this announcement and to the activity which they are undertaking to qualify as a Competent Person as defined in the 2012 edition of the 'Australasian Code for Reporting of Exploration Results, Mineral Resources and Ore Reserves' ("JORC Code"). Mr McDougall consents to the inclusion in this announcement of the matters based on his information in the form and context in which it appears.

## JORC CODE, 2012 EDITION – TABLE 1

### Section 1 sampling techniques and data

(Criteria in this section apply to all succeeding sections.)

Criteria	JORC Code explanation	Commentary
Sampling techniques	<ul style="list-style-type: none"> <li>Nature and quality of sampling (e.g. cut channels, random chips, or specific specialised industry standard measurement tools appropriate to the minerals under investigation, such as down hole gamma sondes, or handheld XRF instruments, etc). These examples should not be taken as limiting the broad meaning of sampling.</li> <li>Include reference to measures taken to ensure sample representivity and the appropriate calibration of any measurement tools or systems used.</li> <li>Aspects of the determination of mineralisation that are Material to the Public Report.</li> <li>In cases where 'industry standard' work has been done this would be relatively simple (e.g. 'reverse circulation drilling was used to obtain 1 m samples from which 3 kg was pulverised to produce a 30 g charge for fire assay'). In other cases, more explanation may be required, such as where there is coarse gold that has inherent sampling problems. Unusual commodities or mineralisation types (e.g. submarine nodules) may warrant disclosure of detailed information.</li> </ul>	Historic Rock chips are logged as grab and composite samples within WAMEX report A115322 Annual Technical Report E45_4677 Nov2017, only 3 of the anomalous Lithium bearing samples were grab samples with highest grade sample a composite. Stannum rock chip is a grab sample highlight form Mindex. Prior WAMEX reported RC drilling results are a split from 1m downhole samples.
Drilling techniques	<ul style="list-style-type: none"> <li>Drill type (e.g. core, reverse circulation, open-hole hammer, rotary air blast, auger, Bangka, sonic, etc) and details (e.g. core diameter, triple or standard tube, depth of diamond tails, face-sampling bit or other type, whether core is oriented and if so, by what method, etc).</li> </ul>	Prior RC drilling conducted and no further drilling has been completed and hence no drill collar table data.
Drill sample recovery	<ul style="list-style-type: none"> <li>Method of recording and assessing core and chip sample recoveries and results assessed.</li> <li>Measures taken to maximise sample recovery and ensure representative nature of the samples.</li> <li>Whether a relationship exists between sample recovery and grade and whether sample bias may have occurred due to preferential loss/gain of fine/coarse material.</li> </ul>	No discrepancies reported in recovery through the pegmatite host.



Criteria	JORC Code explanation	Commentary
Logging	<ul style="list-style-type: none"> <li>Whether core and chip samples have been geologically and geotechnically logged to a level of detail to support appropriate Mineral Resource estimation, mining studies and metallurgical studies.</li> <li>Whether logging is qualitative or quantitative in nature. Core (or costean, channel, etc) photography.</li> <li>The total length and percentage of the relevant intersections logged.</li> </ul>	All chips were geologically logged and files are available with report A11532. Lithium anomalism assigned to logged lepidolite (a lithium bearing mica)
Sub-sampling techniques and sample preparation	<ul style="list-style-type: none"> <li>If core, whether cut or sawn and whether quarter, half or all core taken.</li> <li>If non-core, whether riffled, tube sampled, rotary split, etc and whether sampled wet or dry.</li> <li>For all sample types, the nature, quality and appropriateness of the sample preparation technique.</li> <li>Quality control procedures adopted for all sub-sampling stages to maximise representivity of samples.</li> <li>Measures taken to ensure that the sampling is representative of the in-situ material collected, including for instance results for field duplicate/second-half sampling.</li> <li>Whether sample sizes are appropriate to the grain size of the material being sampled.</li> </ul>	Sub sampling and size was appropriate to the style of mineralisation
Quality of assay data and laboratory tests	<ul style="list-style-type: none"> <li>The nature, quality and appropriateness of the assaying and laboratory procedures used and whether the technique is considered partial or total.</li> <li>For geophysical tools, spectrometers, handheld XRF instruments, etc, the parameters used in determining the analysis including instrument make and model, reading times, calibrations factors applied and their derivation, etc.</li> <li>Nature of quality control procedures adopted (e.g. standards, blanks, duplicates, external laboratory checks) and whether acceptable levels of accuracy (i.e. lack of bias) and precision have been established.</li> </ul>	Assay techniques for Li and reporting of Li <sub>2</sub> O is appropriate to the mineralisation style. No assay QC is presented in A115322
Verification of sampling and assaying	<ul style="list-style-type: none"> <li>The verification of significant intersections by either independent or alternative company personnel.</li> <li>The use of twinned holes.</li> <li>Documentation of primary data, data entry procedures, data verification, data storage (physical and electronic) protocols.</li> <li>Discuss any adjustment to assay data.</li> </ul>	No adjustment has been made to historical data
Location of data points	<ul style="list-style-type: none"> <li>Accuracy and quality of surveys used to locate drill holes (collar and down-hole surveys), trenches, mine workings and other locations used in Mineral Resource estimation.</li> <li>Specification of the grid system used.</li> <li>Quality and adequacy of topographic control.</li> </ul>	Data is in MGA94 Zone 50. Historic rock chip and collar locations collected by handheld GPS



Criteria	JORC Code explanation	Commentary
Data spacing and distribution	<ul style="list-style-type: none"> <li>Data spacing for reporting of Exploration Results.</li> <li>Whether the data spacing and distribution is sufficient to establish the degree of geological and grade continuity appropriate for the Mineral Resource and Ore Reserve estimation procedure(s) and classifications applied.</li> <li>Whether sample compositing has been applied.</li> </ul>	Rock chip sampling is not systematic; however, some anomalous areas are spatially distant to drilling. New rock chips have been collected and will be presented when assays become available.
Orientation of data in relation to geological structure	<ul style="list-style-type: none"> <li>Whether the orientation of sampling achieves unbiased sampling of possible structures and the extent to which this is known, considering the deposit type.</li> <li>If the relationship between the drilling orientation and the orientation of key mineralised structures is considered to have introduced a sampling bias, this should be assessed and reported if material.</li> </ul>	Drill thicknesses are interpreted as near true thickness on historical sections (shallow dipping pegmatite).
Sample security	<ul style="list-style-type: none"> <li>The measures taken to ensure sample security.</li> </ul>	Not applicable – Historic Data
Audits or reviews	<ul style="list-style-type: none"> <li>The results of any audits or reviews of sampling techniques and data.</li> </ul>	Primary data was checked in the A115322 files

## Section 2 Reporting of Exploration Results

Criteria listed in the preceding section also apply to this section.

Criteria	JORC Code explanation	Commentary
Mineral tenement and land tenure status	<ul style="list-style-type: none"> <li>Type, reference name/number, location and ownership including agreements or material issues with third parties such as joint ventures, partnerships, overriding royalties, native title interests, historical sites, wilderness or national park and environmental settings.</li> <li>The security of the tenure held at the time of reporting along with any known impediments to obtaining a licence to operate in the area.</li> </ul>	ELA45/5770 is under option by Avira and is described in the body text.
Exploration done by other parties	<ul style="list-style-type: none"> <li>Acknowledgment and appraisal of exploration by other parties.</li> </ul>	Several other surveys have been undertaken for Tantalum mineralisation; however these are not directly relevant to the lithium prospectivity. Lithium was not assayed by explorers prior to Metalicity's work A115322
Geology	<ul style="list-style-type: none"> <li>Deposit type, geological setting and style of mineralisation.</li> </ul>	Lithium mineralisation in LCT Pegmatites
Drill hole Information	<ul style="list-style-type: none"> <li>A summary of all information material to the understanding of the exploration results including a tabulation of the following information for all Material drill holes: <ul style="list-style-type: none"> <li>easting and northing of the drill hole collar</li> <li>elevation or RL (Reduced Level – elevation above sea level in metres) of the drill hole collar</li> <li>dip and azimuth of the hole</li> <li>down hole length and interception depth</li> <li>hole length.</li> </ul> </li> <li>If the exclusion of this information is justified on the basis that the information is not Material and this exclusion does not detract from the</li> </ul>	See figure 3 for locations of historic drilling. Drilling at Stannum for Ta were 50-80m holes. The drilling at Tria, Vun and Duus prospects were 50-130m total depth.



Criteria	JORC Code explanation	Commentary
	<p>understanding of the report, the Competent Person should clearly explain why this is the case.</p>	
Data aggregation methods	<ul style="list-style-type: none"> <li>In reporting Exploration Results, weighting averaging techniques, maximum and/or minimum grade truncations (e.g. cutting of high grades) and cut-off grades are usually Material and should be stated.</li> <li>Where aggregate intercepts incorporate short lengths of high grade results and longer lengths of low grade results, the procedure used for such aggregation should be stated and some typical examples of such aggregations should be shown in detail.</li> <li>The assumptions used for any reporting of metal equivalent values should be clearly stated.</li> </ul>	No data aggregation bias in historic - 1m RC samples
Relationship between mineralisation widths and intercept lengths	<ul style="list-style-type: none"> <li>These relationships are particularly important in the reporting of Exploration Results.</li> <li>If the geometry of the mineralisation with respect to the drill hole angle is known, its nature should be reported.</li> <li>If it is not known and only the down hole lengths are reported, there should be a clear statement to this effect (e.g. 'down hole length, true width not known').</li> </ul>	Vertical holes in flat dipping pegmatites. Estimates of true thickness are made on the basis of sill or dyke dip in the field.
Diagrams	<ul style="list-style-type: none"> <li>Appropriate maps and sections (with scales) and tabulations of intercepts should be included for any significant discovery being reported. These should include, but not be limited to a plan view of drill hole collar locations and appropriate sectional views.</li> </ul>	No new discovery, collars in plan Figure 3. Historic rock chips show lithium anomalism, and lepidolite has been identified in drilling. Some of the south dipping pegmatites have lepidolite and possible zinnwaldite.
Balanced reporting	<ul style="list-style-type: none"> <li>Where comprehensive reporting of all Exploration Results is not practicable, representative reporting of both low and high grades and/or widths should be practiced to avoid misleading reporting of Exploration Results.</li> </ul>	All Li ranges reported in Figure 3. No grades can be determined by estimating lithium content of identified micas.
Other substantive exploration data	<ul style="list-style-type: none"> <li>Other exploration data, if meaningful and material, should be reported including (but not limited to): geological observations; geophysical survey results; geochemical survey results; bulk samples – size and method of treatment; metallurgical test results; bulk density, groundwater, geotechnical and rock characteristics; potential deleterious or contaminating substances.</li> </ul>	Previous assessment of Hymap data and geochemical sampling for Sn, Ta has occurred.



AVIRA RESOURCES  
LIMITED

Criteria	JORC Code explanation	Commentary
<i>Further work</i>	<ul style="list-style-type: none"><li><i>The nature and scale of planned further work (e.g. tests for lateral extensions or depth extensions or large-scale step-out drilling).</i></li><li><i>Diagrams clearly highlighting the areas of possible extensions, including the main geological interpretations and future drilling areas, provided this information is not commercially sensitive.</i></li></ul>	<i>Further work will be contemplated on receipt of assays.</i>