

New Payne's Find Project

Highly prospective for lithium and base metals

Highlights

- **Tenement applications granted in new regional greenfields (~1200km²) project**
 - **Targeting lithium and base metals**
- **Three additional tenement applications progressing**
- **Base metals search bolstered by recent massive sulphide mineralisation at Meleya (Tempest Minerals)**
- **Systematic lithium targeting underway**

Gold, lithium, and base metals exploration company Golden State Mining Limited (ASX code: "GSM" or the "Company") is pleased to announce the successful grant of two out of five tenement applications at GSM's new ~1200km² Payne's Find Project (refer to ASX announcement dated 31 January 2022) in the Murchison region of Western Australia.

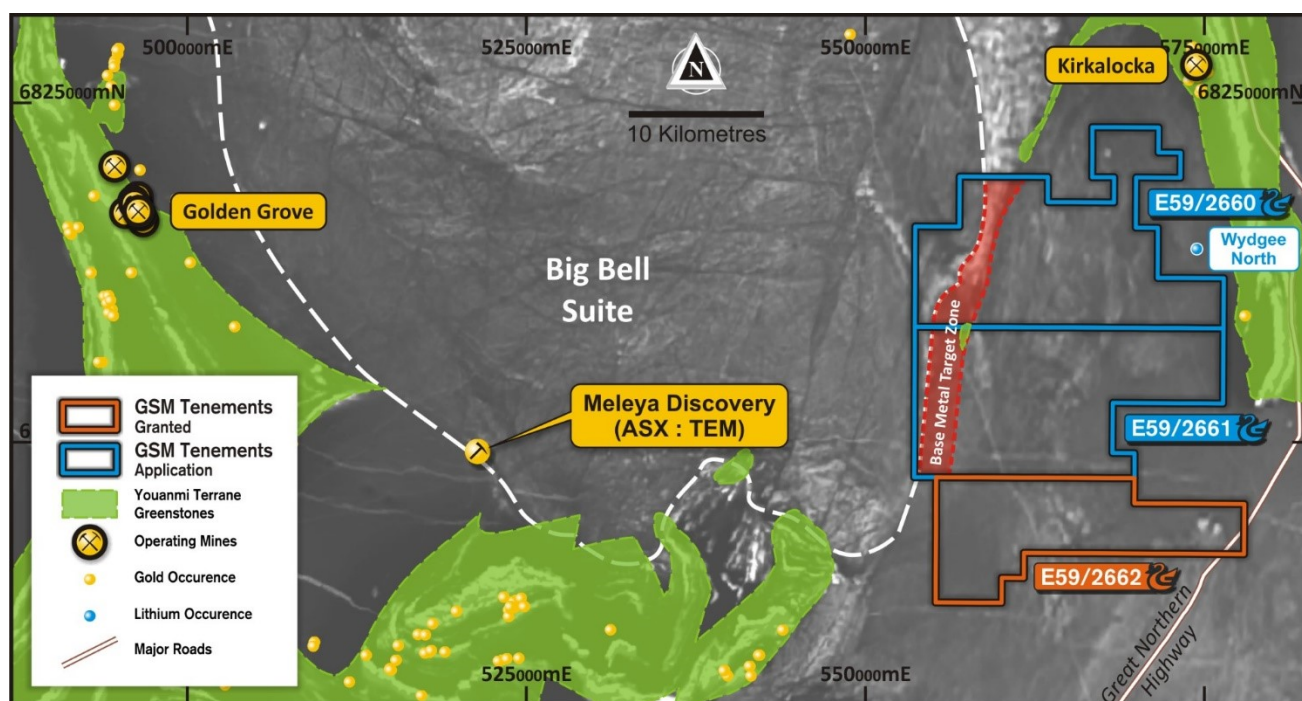


Figure 1: Payne's Find North location plan showing target zone with respect to Meleya Discovery

Golden State's Managing Director, Michael Moore, commented: "The diligent targeting work carried out by GSM during the second half of 2021 is already paying off for the company with the recent granting of two out of five tenement applications at Payne's Find, greatly increasing GSM's footprint across Western Australia. In conjunction with a well-regarded industry consultant, this greenfields area was specifically targeted for its lithium prospectivity, however, the recent Meleya discovery (Figure 1) by Tempest Minerals Limited (ASX:TEM) some thirty kilometres away has also highlighted the importance of base metals opportunities in this region. The GSM team will be on-site in the coming weeks to commence a preliminary geological evaluation of the granted tenements as we fast-track exploration work at Payne's Find."

Payne's Find Project

The new Payne's Find project (Figure 2) is located immediately east and 30kms north of Payne's Find in the Murchison region of Western Australia. GSM has secured the ground for its lithium and base metal potential based on open file aeromagnetic and remote sensing data evaluation. Selection criteria supporting the GSM ground selection in the Payne's Find region includes known lithium-bearing pegmatites (e.g., Mount Edon & Goodingnow) in the region and a favourable geological setting for potential lithium mineralisation comprising multiple granitic intrusive episodes (many of which appear to be "late-stage") intruding into a potential extension of the "Youanmi Terrane" greenstones. The project-scale lithium targeting work has already commenced on the new, underexplored tenure of the entire project area. In addition, the technical team are assessing the interpreted base metal potential corridor on the western part of the Payne's Find North tenements (Figure 1). Further reconnaissance and initial soil sampling work is due to commence in the coming weeks.

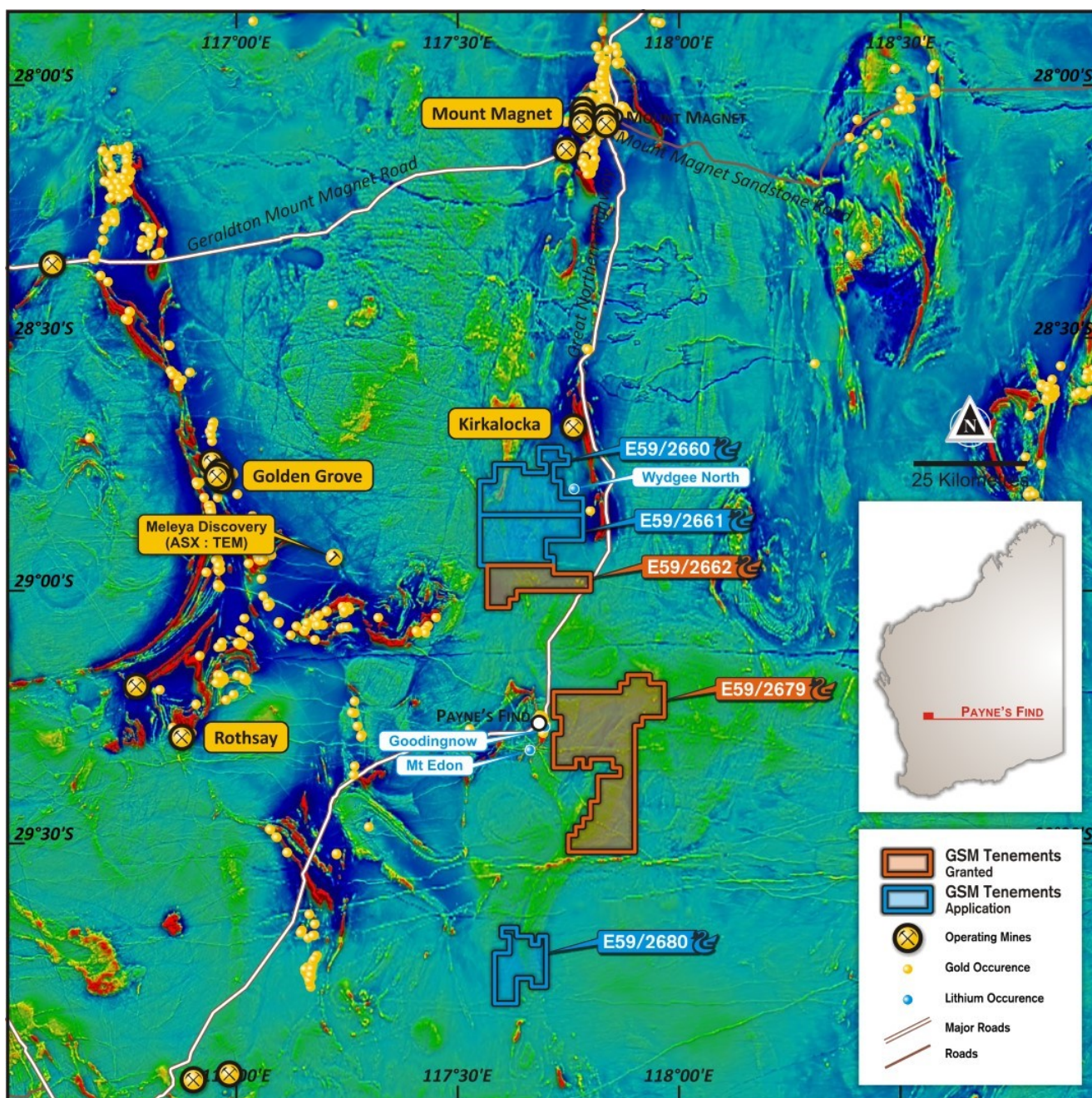


Figure 2: Payne's Find Project location plan

Recently Acquired Projects:

Payne's Find (E59/2660, E59/2661, E59/2662, E59/2679 & E59/2680) –

Lithium & base metal

- Five exploration licence applications (~1200km²) immediately east and 30kms north of Payne's Find. Region contains known lithium-bearing pegmatites (e.g., Mount Edon & Goodingnow) with prospective geological setting of multiple "late-stage" intrusive episodes considered favourable for lithium mineralisation. Base metal potential on eastern side of Big Bell Suite 30kms East of Meleya Discovery (ASX:TEM).

Eucla Basin (E28/3175 & E28/3176) – Copper-Au & Nickel

- Two exploration licence applications (974km²) approximately 100kms north-east of Balladonia. Untested buried magnetic and gravity anomalies may represent a layered mafic-ultramafic intrusive target in the Albany-Fraser Province (similar age rocks to Nova-Bollinger nickel-copper deposit and Tropicana gold deposit).



Southern Cross East (E77/2896, E77/2897 & E77/2898) – Gold

- Three exploration licence applications for a total of 620km² approximately 60kms north-east of Southern Cross. Buried Archaean rocks with structural setting considered favourable for orogenic gold prospectivity in a long-lived gold mining region.

Yamarna (E38/3671 & E38/3670) – Gold-Nickel & PGE

- Two exploration licence applications (661km²) approximately 96kms north-northeast of Laverton. The location is situated on the same crustal suture as the Mt Alexander nickel sulphide discoveries and contains similar host rock potential.

Ashburton (E08/3456 & E08/3469) – Lead-Silver & Gold

- Two exploration licence applications for a total of 302km² approximately 12kms southwest of the Kooline airstrip, 135kms west of Paraburdoo. The tenements are considered prospective for VHMS style mineralisation in sediments proximal to basin bounding faults.

For further information please contact:

- Mike Moore (Managing Director) on 08 6323 2384
- Greg Hancock (Non-Executive Director) 08 6323 2384

BOARD OF DIRECTORS

Damien Kelly
Non-Executive Chairman

Michael Moore Managing
Director

Brenton Siggs
Non-Executive Director

Greg Hancock
Non-Executive Director

ISSUED CAPITAL

Shares	83.1m
Options	17.0 m

REGISTERED OFFICE

Level 1, Suite 15
19-21 Outram Street
West Perth WA 6005

T: +61 (08) 6323 2384
F: +61 (08) 9467 9114
E: info@gsmining.com.au

Golden State Mining Limited
ABN 52 621 105 995

FORWARD LOOKING STATEMENTS

As a result of a variety of risks, uncertainties and other factors, actual events, trends and results may differ materially from any forward looking and other statements mentioned or implied herein not purporting to be of historical fact. In certain cases, forward-looking information may be identified by (without limitation) such terms as "anticipates", "believes", "should", "could", "estimates", "target", "likely", "plan", "expects", "may", "intend", "shall", "will", or "would". Any statements concerning mining reserves, resources and exploration results may also be forward looking in that they involve estimates based on assumptions. Forward looking statements are based on management's beliefs, opinions and estimates as of the respective dates they are made. The Company does not assume any obligation to update forward looking statements even where beliefs, opinions and estimates change or should do so given changed circumstances and developments.

COMPETENT PERSONS STATEMENT

The information in this report that relates to Exploration Results, is based on information compiled by Geoff Willetts who is a Member of the Australian Institute of Geoscientists (AIG). Geoff Willetts is the Exploration Manager, a full-time employee of Golden State Mining Limited (GSM) and holds shares and options in the Company.

Geoff Willetts has sufficient experience relevant to the style of mineralisation and type of deposit under consideration and to the activity currently being undertaken to qualify as a Competent Person as defined in the 2012 edition of the "Australasian Code for Reporting of Exploration Results, Mineral Resources and Ore Reserves". Geoff Willetts consents to the inclusion in this report of the matters based on his information in the form and context in which it appears. Information on previous explorers and historical results are summarised in the Independent Geologist's Report of the Golden State Mining Limited Prospectus dated 22 August 2018.

This release was authorised by Mr. Michael Moore, Managing Director of Golden State Mining Limited.